

Trees-Shrubs of Mt Gravatt Conservation Reserve

Compiled by: Michael Fox

<http://megoutlook.wordpress.com/flora-fauna/>

© 2014-16 Creative Commons – free use with attribution to Mt Gravatt Environment Group

Anacardiaceae
Schinus terebinthifolius
Brazilian Pepper Tree,
Christmas Berry Tree

WEED!

Crushed leaves smell of pepper.

Poisonous – berries cause vomiting & diarrhoea, sap causes skin & eye irritation.

Spreads by suckering from aggressive but shallow root system.



Trees-Shrubs of Mt Gravatt Conservation Reserve

Anacardiaceae

Rhodosphaera rhodantha

Deep Yellow Wood, Yellow Cedar,
Tulip Satinwood



Trees-Shrubs of Mt Gravatt Conservation Reserve

Apocynaceae
Cascabela thevetia
Yellow Oleander, Captain
Cook tree

WEED!

Noxious weed – BCC Class C

Poisonous – all parts of tree
dangerously poisonous



Trees-Shrubs of Mt Gravatt Conservation Reserve

Apocynaceae
Gomphocarpus physocarpus
Balloon Cotton Bush

WEED!

Poisonous sap – handle with care



Caterpillar food plant for:
Lesser Wanderer and
Monarch/Wanderer



Trees-Shrubs of Mt Gravatt Conservation Reserve

Araliaceae
Schefflera actinophylla
Umbrella Tree

WEED!

Native of North Queensland

Spreads rapidly as birds eat ripe fruit.



Trees-Shrubs of Mt Gravatt Conservation Reserve

Asteraceae
Ageratina adenophora
Crofton Weed

WEED!



Asteraceae
Baccharis halimifolia
Groundsel, Consumption
Weed

WEED!

Spreads by wind dispersal.
Native to North America & West
Indies – introduced in mid 1800s.



Trees-Shrubs of Mt Gravatt Conservation Reserve

Asteraceae
Montanoa hibiscifolia
Anzac Flower, Treedaisy

WEED!

Native to Mexico and Central America.



Asteraceae
Olearia nernstii
Snow Bush



Trees-Shrubs of Mt Gravatt Conservation Reserve

Asteraceae
Ozothamnus diosmifolius
Sago Flower



Bignoniaceae
Jacaranda mimosaeifolia
Jacaranda

WEED!



Trees-Shrubs of Mt Gravatt Conservation Reserve

Bignoniaceae
Tecoma stans
Yellow Bells

WEED!



Caesalpinaceae
Chamaecrista nomame

Caterpillar food plant:
No-brand Grass-yellow



Trees-Shrubs of Mt Gravatt Conservation Reserve

Caesapiniaceae
Senna pendula v *glabrata*
Easter Cassia

WEED!

Colonises bushland and prevents native regrowth.

Produces masses of yellow flowers at Easter.



Trees-Shrubs of Mt Gravatt Conservation Reserve

Large numbers of seed pods produced each year.

Easter Cassia has a distinctive gold rim along the edge of leaf.



Casuarinaceae
Allocasuarina littoralis
Black She-oak

Male



Trees-Shrubs of Mt Gravatt Conservation Reserve

Casuarinaceae
Allocasuarina littoralis
Black She-oak

Female



Trees-Shrubs of Mt Gravatt Conservation Reserve

Casuarinaceae
Allocasuarina torulosa
Forest She-oak



Dilleniaceae
Hibbertia aspera



Trees-Shrubs of Mt Gravatt Conservation Reserve

Dilleniaceae
Hibbertia stricta (*riparia*)
Erect Guinea-flower



Trees-Shrubs of Mt Gravatt Conservation Reserve

Epacridaceae
Trochocarpa laurina
Tree Heath

Longitudinal veins like Hickory
Wattle.
Food plant - Lewin's Honeyeater



Common Crow – *Euploea core*



Flower and fruit



Trees-Shrubs of Mt Gravatt Conservation Reserve

Euphorbiaceae
Alchornea ilicifolia
Native Holly



Euphorbiaceae
Breynia oblongifolia
Coffee Tree/Native Privet

Food plant – flowers:
White-cheeked Honeyeater

Caterpillar food plant:
Large Grass-yellow butterfly
Achaea argilla



Trees-Shrubs of Mt Gravatt Conservation Reserve

Euphorbiaceae
Genus waiting identification

WEED!

Poisonous

Irritant milky sap – on skin causes rashes to serious burns – in eyes causes inflammation even blindness.

Handle with extreme care – rubber gloves and eye protection required. Bag for disposal.

DO NOT MULCH



Euphorbiaceae
Macaranga tanarius
Macaranga



Similar to Weed – Castor Oil Plant
- leaves rounded not star shaped.

6m – Cream flowers



Trees-Shrubs of Mt Gravatt Conservation Reserve

Euphorbiaceae
Petalostigma pubescens
Quinine Bush

6m



Euphorbiaceae
Petalostigma triloculare
Quinine Bush/Long-leaved
Bitter Bark

5m

Cream/yellow flower
Orange fruit



Trees-Shrubs of Mt Gravatt Conservation Reserve

Euphorbiaceae
Ricinus communis
Castor Oil Plant

WEED!

**Noxious weed – BCC Class C
Seeds highly toxic – can cause
death if eaten.**

Large red flowers in summer –
seed capsules explode when ripe.
Found on disturbed or cleared
land and along creek banks.

Similar to Macaranga - leaves star
shaped rather than rounded.



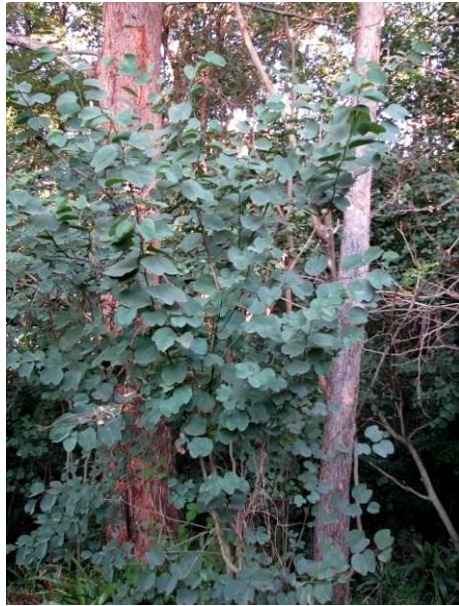
Fabaceae
Aotus lanigera
Woolly Aotus



Trees-Shrubs of Mt Gravatt Conservation Reserve

Fabaceae
Bauhinia variegata
Orchid Tree

WEED!



Fabaceae
Caesalpinia ferrea
Leopard Tree

WEED!



Trees-Shrubs of Mt Gravatt Conservation Reserve

Fabaceae
Crotalaria lanceolata
Rattlepod

WEED!

Caterpillar food plant:
Long-tailed Pea-blue



Distinctive seed pods rattle when dry.



Trees-Shrubs of Mt Gravatt Conservation Reserve

Fabaceae
Crotalaria montana
Rattlepod

Native Rattlepod

Caterpillar food plant:
Long-tailed Pea-blue



Fabaceae
Crotalaria pallida
Rattlepod

WEED!

Caterpillar food plant:
Long-tailed Pea-blue



Trees-Shrubs of Mt Gravatt Conservation Reserve

Fabaceae
Daviesia ulicifolia
Gorse Bitter Pea

Caterpillar food plant:
Fringed Heath-blue



Trees-Shrubs of Mt Gravatt Conservation Reserve

Fabaceae
Daviesia villifera
Bitter Pea

Caterpillar food plant:
Fringed Heath-blue

Distinctive leaf shape.



Fabaceae
Daviesia wyattiana
Long-leaved Bitter Pea



Trees-Shrubs of Mt Gravatt Conservation Reserve

Fabaceae
Hovea acutifolia
Purple Pea Bush



Trees-Shrubs of Mt Gravatt Conservation Reserve

Fabaceae
Hovea heterophylla
Common Hovea, Narrow-
leaved Pea Bush



Trees-Shrubs of Mt Gravatt Conservation Reserve

Fabaceae
Indigofera australis
Native Indigo

Caterpillar food plant:
Long-tailed Pea-blue
Common Grass-blue



Trees-Shrubs of Mt Gravatt Conservation Reserve

Fabaceae
Indigofera hirsute
Hairy Indigo

Caterpillar food plant:
Long-tailed Pea-blue
Common Grass-blue



Leaves and stem very hairy



Trees-Shrubs of Mt Gravatt Conservation Reserve

Fabaceae
Isotropis filicaulis

Rare/Threatened species



Fabaceae
Jacksonia scoparia
Dogwood

Caterpillar food plant:
Fiery Jewel
Copper Pencilled-blue

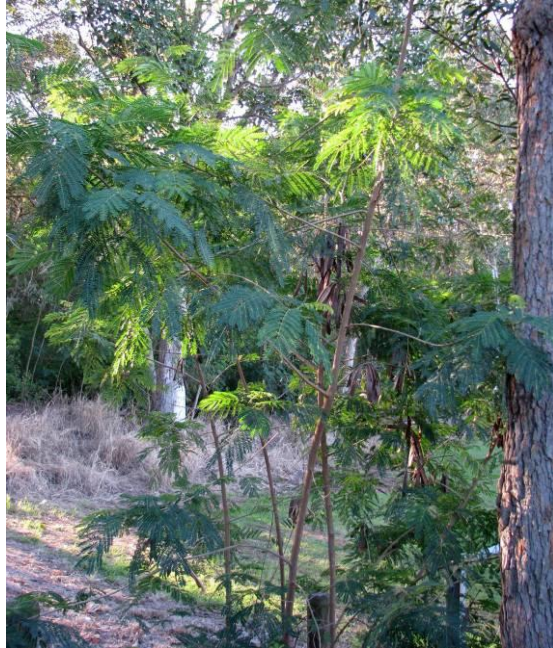


Trees-Shrubs of Mt Gravatt Conservation Reserve

Fabaceae
Leucaena leucocephala
Lead Tree, Coffee Bush

WEED!

Native to tropical America.
Introduced as fodder species.



Trees-Shrubs of Mt Gravatt Conservation Reserve

Fabaceae
Podolobium aciculiferum
Prickly Shaggy Pea

Previously *Oxylobium aciculiferum*

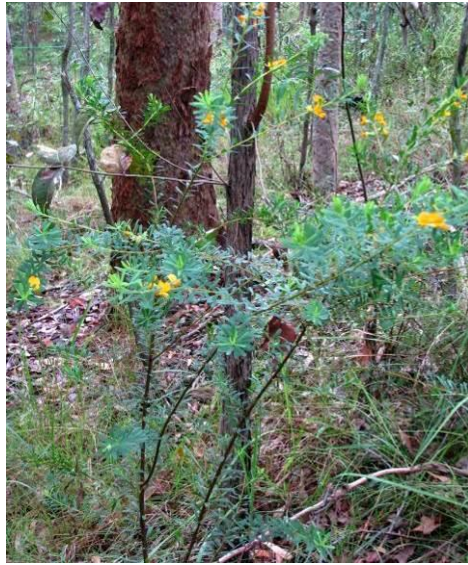
Multiple long sharp prickles.



Trees-Shrubs of Mt Gravatt Conservation Reserve

Fabaceae
Pultenaea euchila
Orange Pultenaea

Caterpillar food plant:
Fringed Heath-blue butterfly



Fabaceae
Pultenaea villosa
Hairy Pea Bush

Well named for hairs on leaves.

Caterpillar food plant:
Fringed Heath-blue butterfly



Trees-Shrubs of Mt Gravatt Conservation Reserve

Fabaceae
Tephrosia glomeruliflora
Pink Pea Bush

WEED!



Lamiaceae
Callicarpa pedunculata
Velvet Leaf



Trees-Shrubs of Mt Gravatt Conservation Reserve

Lauraceae
Cinnamomum camphora
Camphor Laurel

WEED!

Aggressive along waterways,
forming dense infestations.
Distinctive smooth green bark.
Leaves fragrant when crushed.

Caterpillar food plant:
Blue Triangle

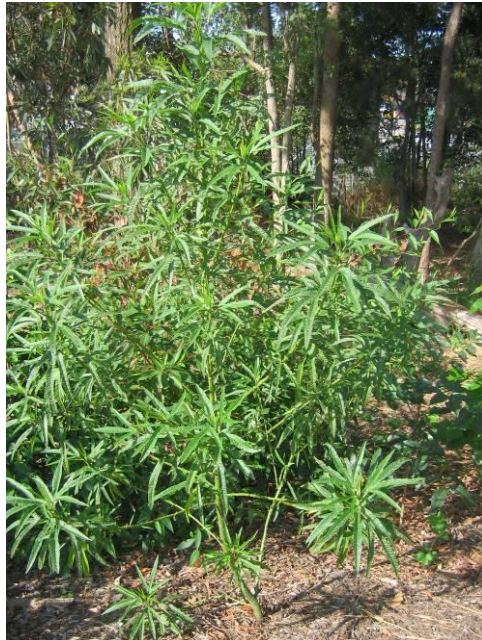


Trees-Shrubs of Mt Gravatt Conservation Reserve

Malvaceae
Hibiscus
heterophyllus
Native Rosella



Caterpillar food plant:
Cotton Looper Moth



Trees-Shrubs of Mt Gravatt Conservation Reserve

Melastomataceae
Melastoma affine
Blue Tongue, Native
Lasiandra



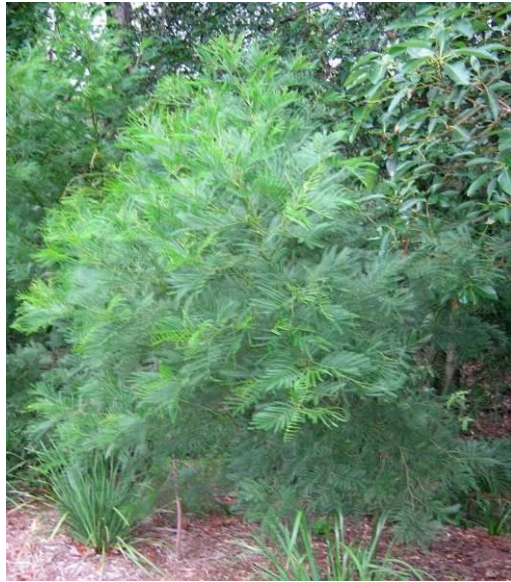
Trees-Shrubs of Mt Gravatt Conservation Reserve

Mimosaceae
Acacia complanata
Flat-stemmed Wattle



Trees-Shrubs of Mt Gravatt Conservation Reserve

Mimosaceae
Acacia decurrens
Green Wattle, Black Wattle



Mimosaceae
Acacia falcata
Sickle Leafed Wattle

Height: 2-5m

Leaves curved like a sickle,
longitudinal veins with some cross
veins.



Food plant: Pale-headed Rosella

Caterpillar food plant:
Imperial Hairstreak
Short-tailed Line



Trees-Shrubs of Mt Gravatt Conservation Reserve

Mimosaceae
Acacia fimbriata
Brisbane Fringed Wattle

Height: 6m



Food plant – King Parrot

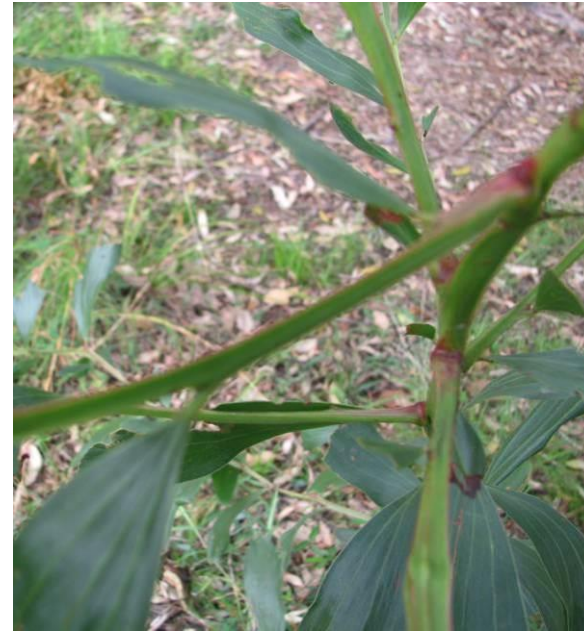


Trees-Shrubs of Mt Gravatt Conservation Reserve

Mimosaceae
Acacia leiocalyx
Early Black Wattle
Lamb's Tail Wattle

Height: 6m

Identify: Branches triangular and reddish



Caterpillar food plant:
Imperial Hairstreak



Trees-Shrubs of Mt Gravatt Conservation Reserve

Mimosaceae
Acacia maidenii
Maiden's Wattle

Height: 15m

Caterpillar food plant:
Tailed Emperor
Common or Large Grass-yellow
Double-spotted Line Blue
Glistening Blue



Mimosaceae
Acacia macradenia
Zig-zag Wattle

(Planted)

Indigenous to Central Queensland
(Chinchilla to Blackdown
Tableland)



Trees-Shrubs of Mt Gravatt Conservation Reserve

Mimosaceae
Acacia podalyriifolia
Silver Wattle



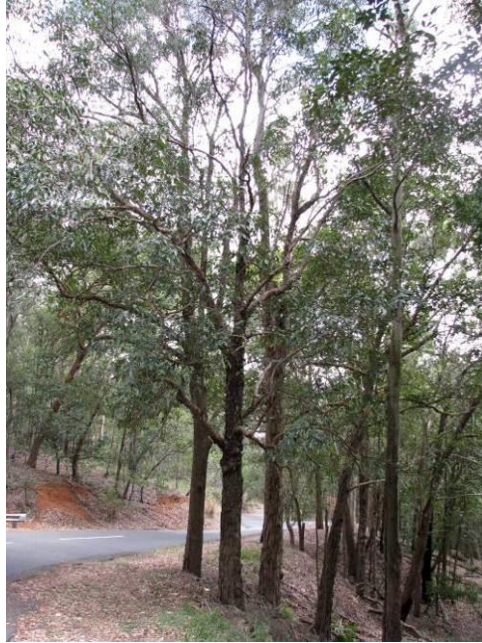
Trees-Shrubs of Mt Gravatt Conservation Reserve

Myrtaceae
Angophora woodsiana
Smudgee

Height: 20m

Distinctive bark

Food plant:
Grey-headed Flying-fox



Trees-Shrubs of Mt Gravatt Conservation Reserve

Myrtaceae
Austromyrtus dulcis
Midgen, Midjim, Midyim
Berry

Shrub: 50cm

Hardy – sun or shade, rockery

Bushfood – sweet edible
berries/seeds

Attracts fruit eating birds. Dense
foliage offers safety to small birds.



Myrtaceae
Babingtonia similis
Twiggy Myrtle



Trees-Shrubs of Mt Gravatt Conservation Reserve

Myrtaceae
Backhousia myrtifolia
Grey Myrtle

Height: 6-15m



Myrtaceae
Corymbia citriodora v
variegata
Spotted Gum

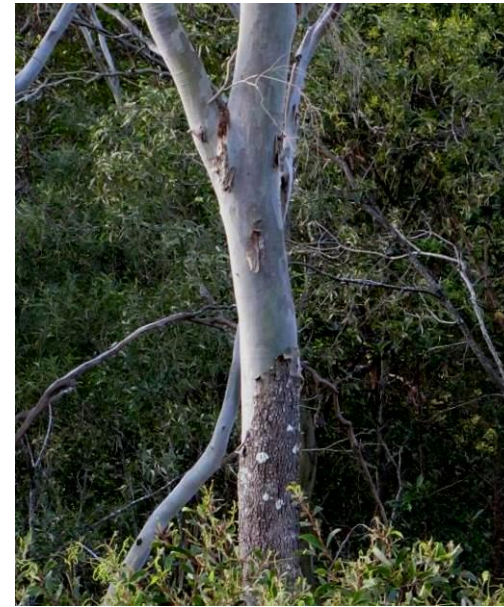


Trees-Shrubs of Mt Gravatt Conservation Reserve

Myrtaceae
Corymbia tessellaris
Moreton Bay Ash

Height: 10-20m

Half-bark – rough tessellated bark on bottom changing to smooth grey/white on upper parts.



Trees-Shrubs of Mt Gravatt Conservation Reserve

Myrtaceae
Corymbia torrelliana
Cadaghi

WEED!

Environmental weed – BCC class R

Rainforest tree from North Qld

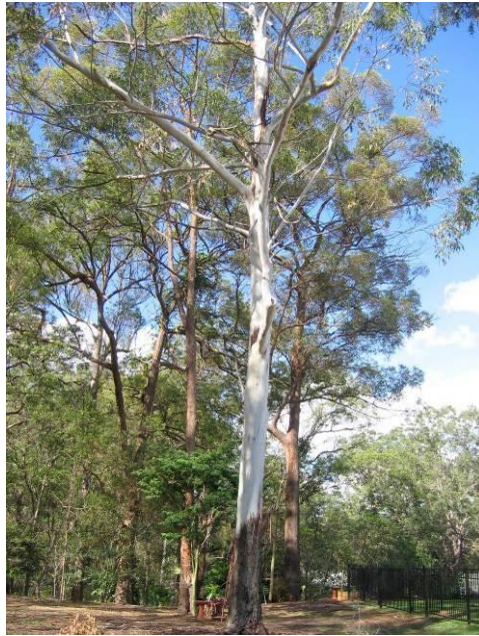
Dangerous for native bees –
Trigona carbonaria – flowers Nov.
– seeds form in Jan – bees
become
obsessed with
collection of
resin from seeds
and carry seeds
to nest.



Trees-Shrubs of Mt Gravatt Conservation Reserve

Myrtaceae
Eucalyptus grandis
Flooded Gum

Food tree: Rainbow Lorikeet



Trees-Shrubs of Mt Gravatt Conservation Reserve

Myrtaceae

Eucalyptus microcorys

Tallowwood

Leaves heavily fragrant when crushed. Reddish brown bark has distinctive pock marks.

Food tree: Koala
Scaly-breasted Lorikeet



Myrtaceae

Eucalyptus racemosa

Scribbly Gum

Food tree: Koala
Scaly-breasted Lorikeet

Caterpillar food plant:
Scribbly Gum Moth
Ogmograptis scribula

Tiny (2mm) Scribbly Gum Moths lay eggs under bark. Caterpillar burrows between layers of bark leaving distinctive “scribble”.

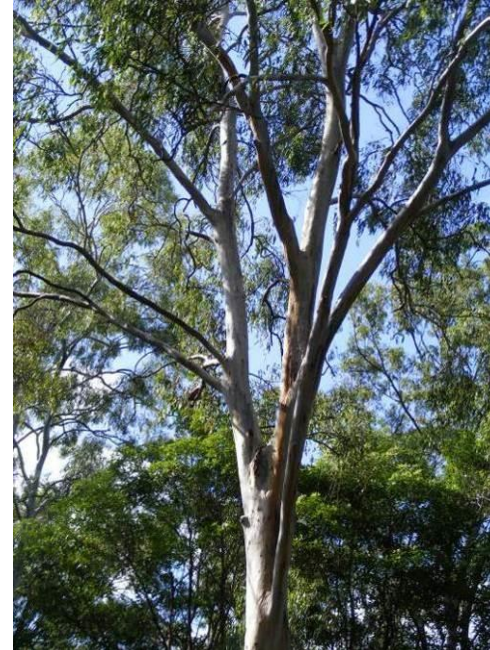


Trees-Shrubs of Mt Gravatt Conservation Reserve

Myrtaceae
Eucalyptus tereticornis
Qld Blue Gum or Forest Red Gum

25-45m

Koala – favorite food tree



Myrtaceae
Leptospermum polygalifolium
Wild May

<4m



Trees-Shrubs of Mt Gravatt Conservation Reserve

Myrtaceae

Lophostemon confertus

Brush Box

Caterpillar food plant:
Four-Spotted Cup Moth

Half bark – rough, grayish-brown
lower, upper smooth pink-grey
New leaf growth - whorl



Trees-Shrubs of Mt Gravatt Conservation Reserve

Myrtaceae
Syzygium australe
Creek Satinash



Leaves aromatic when crushed



Myrtaceae
Xanthostemon chrysanthus
Golden Penda

Coastal rainforest in North Qld -
Townsville to Cape York



Trees-Shrubs of Mt Gravatt Conservation Reserve

Ochnaceae
Ochna serrulata
Mickey Mouse Plant

WEED!

Very limited response to
Glyphosate poison

TreePopper effective when ground
soft after rain.



Trees-Shrubs of Mt Gravatt Conservation Reserve

Oleaceae
Ligustrum sinense
Small Leafed Privet

WEED!



Trees-Shrubs of Mt Gravatt Conservation Reserve

Oleaceae
Notelaea longifolia
Long-leaved Mock-olive

3-7 metres

White flowers
Purple-black fruit

Food for fruit eating birds.



Trees-Shrubs of Mt Gravatt Conservation Reserve

Oleaceae
Notelaea ovata
Netted Mock-olive



Trees-Shrubs of Mt Gravatt Conservation Reserve

Phyllanthaceae
Glochidion ferdinandi
Cheese Tree



Phyllanthaceae
Glochidion sumatranum
Buttonwood, Umbrella
Cheese Tree

Hairy stems and leaves.
Similar to Cheese Tree
Glochidion Ferdinandi which has
no hairs and stiff glossy dark
green leaves.

Food plant for:
Crested Pigeon
Rainbow Lorikeet



Trees-Shrubs of Mt Gravatt Conservation Reserve

Pittosporaceae
Bursaria spinosa
Prickly Pine

Protection for small forest birds
Food plant:

- flowers - Imperial Hairstreak , Common Crow, Blue Tiger butterflies
- leaves – caterpillars of Fiery Copper and Bright Copper butterflies



(Right) Blue Tiger butterfly



Trees-Shrubs of Mt Gravatt Conservation Reserve

Pittosporaceae
Pittosporum revolutum
Forest Pittosporum



Trees-Shrubs of Mt Gravatt Conservation Reserve

Polygalaceae
Polygala virgata

WEED!



Trees-Shrubs of Mt Gravatt Conservation Reserve

Proteaceae
Banksia integrifolia
ssp integrifolia
Coastal Banksia

Food plant:
Squirrel Glider
Eastern Spinbill



Proteaceae
Persoonia iogyna
Geebung



Trees-Shrubs of Mt Gravatt Conservation Reserve

Rhamnaceae
Alphitonia excelsa
Soapy or Red Ash

Leaves dark/mid green on top –
powdery white underneath.
Rub leaves in water for bush soap.

Caterpillar food plant:
Small Green-banded Blue



Trees-Shrubs of Mt Gravatt Conservation Reserve

Rosaceae
Eriobotrya japonica
Loquat, Japanese plum

WEED!

Edible - small yellow/orange fruit –
large seed

Origin – China



Rosaceae
Raphiolepis indica
Indian Hawthorne

WEED!

Suppresses regeneration and
growth of native species



Trees-Shrubs of Mt Gravatt Conservation Reserve

Rosaceae
Rubus moluccanus
Molucca/Queensland
Broad-leaf Bramble

Red berry fruit



Rubiaceae
Pomax umbellata
No common name found

Shrub



Trees-Shrubs of Mt Gravatt Conservation Reserve

Rubiaceae
Psychotria Ioniceroides
Hairy Psychotia



Rutaceae
Flindersia australis
Crow's Ash



Caterpillar food plant:
Orchard Swallowtail



Female Orchard Swallowtail



Trees-Shrubs of Mt Gravatt Conservation Reserve

Rutaceae
Zieria smithii
Sandfly Zieria, Smithian Zieria,
Dr Smith's Zieria

Listed as Endangered in
Queensland

Planted:
Gertrude Petty Place
Firefly Gully



Trees-Shrubs of Mt Gravatt Conservation Reserve

Santalaceae
Exocarpos cupressiformis
Native Cherry

Bush food – fruit red when ripe

Caterpillar food plant:
Spotted Jezebel butterfly

Looks similar to:
She-oak *Allocasuarina*
Dogwood *Jacksonia scoparia*



Ripe fruit
Photo: Alan Moore

(Right) Tiny flower smaller than a
pin head. Photo: Alan Moore



Trees-Shrubs of Mt Gravatt Conservation Reserve

Sapindaceae
Cupaniopsis anacardioides
Tuckeroo



Sapindaceae
Dodonaea triquetra
Hop Bush

Leafcutter Bee



Trees-Shrubs of Mt Gravatt Conservation Reserve

Sapindaceae
Jagera pseudorhus
Foambark



Trees-Shrubs of Mt Gravatt Conservation Reserve

Sapindaceae
Koelreuteria elegans
Golden Rain

WEED!

Flowers spread hundreds of metres by wind when dry.



Trees-Shrubs of Mt Gravatt Conservation Reserve

Solanaceae
Cestrum parqui
Green Cestrum, Green
Poisonberry

WEED!

Noxious weed – BCC Class C

Foul smell from flowers and
crushed leaves.



Solanaceae
Solanum mauritianum
Wild Tobacco Bush

WEED!



Trees-Shrubs of Mt Gravatt Conservation Reserve

Sterculiaceae
Commersonia bartramia
Brown Kurrajong



Thymelaeaceae
Wikstroemia indica
Bootlace Bush



Trees-Shrubs of Mt Gravatt Conservation Reserve

Tiliaceae
Grewia latifolia
Dog's Balls, Dysentery Plant



Ulmaceae
Celtis sinensis
Chinese Elm

WEED!

Class 3 declared pest plant in Qld
– supply and sale prohibited.

A highly invasive environmental weed native to Asia it sucks up water and destroys natural habitat. Produces thousands of small orange berries which are spread by birds, flying foxes and water.

Caterpillar food plant:
White-banded Plane



Trees-Shrubs of Mt Gravatt Conservation Reserve

Ulmaceae
Trema tomentosa
Poison Peach

Leaves similar to *Lantana camara*
but leaves alternate – if unsure
crush leaf Lantana has very strong
unusual smell

Caterpillar food plant:
Speckled Line-blue



Trees-Shrubs of Mt Gravatt Conservation Reserve

Urticaceae
Pipturus argenteus
Native Mulberry

Shrub/small tree – 6m

Bushfood

Caterpillar food plant:
Speckled Line-blue
Varied Eggfly
Yellow Admiral

Flowers – nectar for adult
butterflies



Verbenaceae
Lantana camara
Lantana

WEED!

Poisonous leaves, flowers and
berries.

Leaves similar to Poison peach
but opposed – if unsure crush leaf
Lantana has very strong unusual
smell



Trees-Shrubs of Mt Gravatt Conservation Reserve

Xanthorrhoeaceae
Xanthorrhoea macronema
Bottle Brush Grass Tree

Uncommon.

Distinctive bottlebrush flower



Trees-Shrubs of Mt Gravatt Conservation Reserve