



**Metro Mining Seed  
Collection Booklet  
2023**



## Community seed collection dates for Mapoon, Naprannum and NPA

Collection number	Date
1	17 <sup>th</sup> July - Mapoon 18 <sup>th</sup> July - Naprannum 19 <sup>th</sup> July - NPA
2	14 <sup>th</sup> August – Mapoon 15 <sup>th</sup> August – Naprannum 16 <sup>th</sup> August - NPA
3	11 <sup>th</sup> September – Mapoon 12 <sup>th</sup> September - Naprannum 13 <sup>th</sup> September - NPA
4	9 <sup>th</sup> October – Mapoon 10 <sup>th</sup> October – Naprannum 11 <sup>th</sup> October - NPA
5	6 <sup>th</sup> November – Mapoon 7 <sup>th</sup> November – Naprannum 8 <sup>th</sup> November - NPA
6	4 <sup>th</sup> December – Mapoon 5 <sup>th</sup> December– Naprannum 6 <sup>th</sup> December - NPA
7	18 <sup>th</sup> December – Mapoon 19 <sup>th</sup> December– Naprannum 20 <sup>th</sup> December - NPA

**Species identification sheets**  
**Cockatoo Grass**

*Alloteropsis semialata*

**Description:** Perennial grass to 1 – 1.5m high; Seed heads generally of 3 or more seed heads. One of the first grasses to emerge after rain.

**Location:** Common grass in woodland and open forest.

**When to pick:** Pick when seeds have turned brown on the seed head. If the grass is flowering (see photo below), come back in 10-14 days and the seeds will be ready to pick. Remove seeds by hand stripping. The seeds should come off easily. If seeds are hard to remove then the seed head is immature and not ready.

**Note: Seeding only lasts 1 month and seed will become hard to source by mid - January**



## Beach wattle

## *Acacia crassicarpa*

**Description** Tree to 8m; Produces flat seed pods containing numerous seeds that have a “white tail”.

**Location:** Common in seasonally wet areas and along the foredunes of estuaries and beaches.

**When to pick:** Collect pods once they have turned brown and are beginning to split open. Ensure seeds are black and hard. If seeds are soft they should be discarded.

**Seeding time:** September - November



## Ironbark wattle

## *Acacia leptocarpa*

**Description** Tree to 5m; Produces slender elongated seed pods that contain seeds connected by a “yellow tail”.

**Location:** Common throughout area, especially in disturbed areas.

**When to pick:** Remove the seeds when they are exposed from the pod. Place seeds in a bag.

**Seeding time:** Mature pods can be collected from October - November



## Roth's Wattle

## *Acacia rothii*

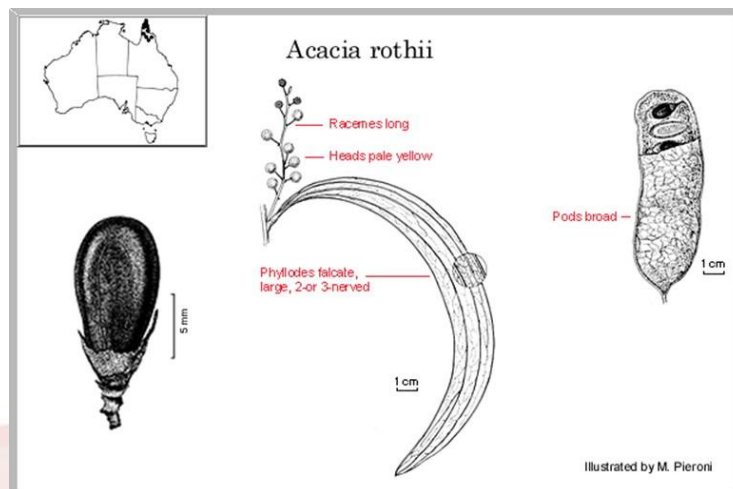
**Description** Tree to 10m; Produces long seed pods containing up to ten seeds.

**Location:** Common throughout the area.

**When to pick:** Collect pods once they have turned brown and are beginning to split open. Ensure seeds are black and hard. If seeds are soft they should be discarded.

**Limit:** Only 1 small bag per collector unless otherwise approved

**Seeding time:** August - November



## Soap Tree

## *Alphitonia excelsa*

**Description** Tree to 12m; Leaves are distinctively white underneath. Produces small black fruits that contain two red seeds.

**Location:** Common throughout area

**When to pick:** Collect fruits when the seeds are exposed. If seed are not exposed leave fruits in the sun until the husk has cracked open.

**Seeding time:** September – November



## Liniment Tree

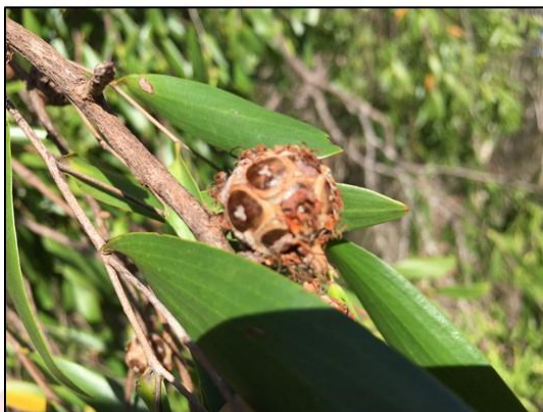
## *Asteromyrtus symphyocarpa*

**Description** Tree to 10m; Produces round seed pods that resemble small asteroids/ soccer balls.

**Location:** Commonly found in seasonally inundated areas and swamps.

**When to pick:** **Collect seed capsule when brown.** Place capsules into an open container and leave to dry for up to a week. Seeds will fall out of the capsules and settle on the bottom of the container. Remove empty capsules and place into bags.

**Seeding time:** May – August.



**Seed pod**



**Seed**



## Banksia

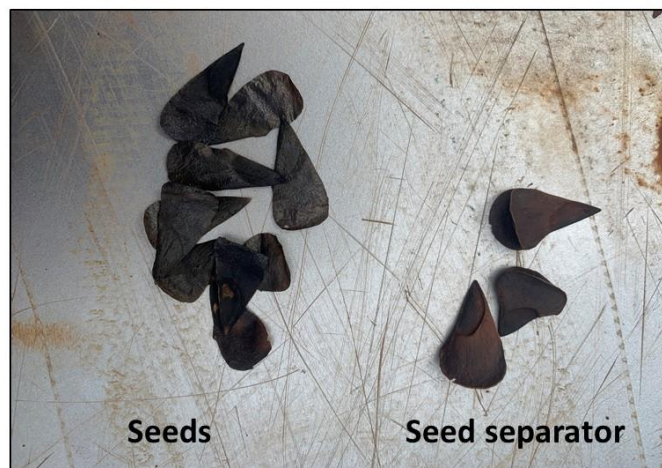
## *Banksia dentata*

**Description** Tree to 8m; Produces large elongated seed pods that contain two paper thin seeds.

**Location:** Commonly found in wet areas.

**When to pick:** Remove the large seed pods when they have lost all flowering parts and pods are closed. Place the pods in a hot area that is not exposed to the wind. The seed pods will open. Each pod contains two paper thin seeds that are divided by a woody seed separator. Remove the seeds from the separator and place into a bag. Seed separators will not be accepted

**Seeding time:** Mature pods can be collected from October - December



## Mango Bark

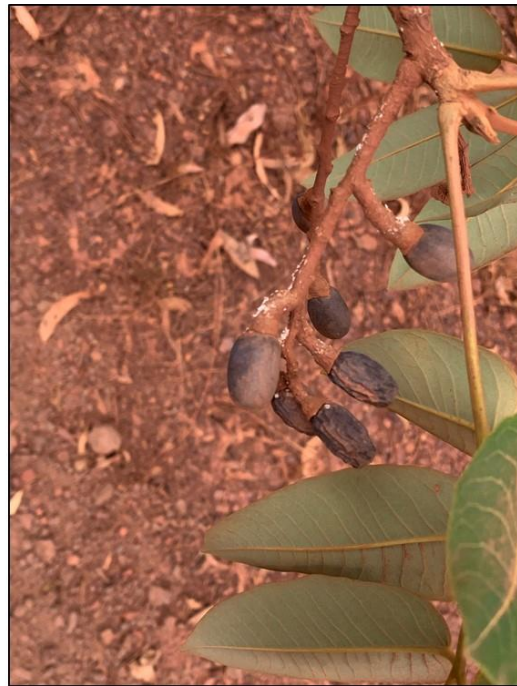
## *Canarium australium*

**Description** Tree to 25m; Produces fleshy purple fruits that often attract cockatoos. The sap is used as a glue to make spears.

**Location:** Common in most areas.

**When to pick:** Pick the fruit when they are purple and have fallen from the tree. Soak the fruits in water and remove the flesh from the seed. Place seeds in a dry area.

**Seeding time:** August - December



## Yellow dye tree

## *Coelospermum reticulatum*

**Description** Tree to 3m; Often has a corky bark. Produces black berry fruits that contain small seeds.

**Location:** Commonly found on bauxite plateaus.

**When to pick:** Collect fruit when black and remove seed. Remove skin and pulp from seed and allow to dry in shaded area.

**Seeding time:** March – July.



## Batwing Coral Tree

## *Erythrina vespertilio*

**Description** Tree to 20m; Deciduous, losing leaves during the dry season. Leaves have a diamond or “bat wing” appearance.

**Location:** Common throughout area

**When to pick:** Collect seed pods once they have fallen from the tree. Seeds are red and easily noticeable under the parent tree. Place seeds directly into a calico bag. No cleaning required.

**Seeding time:** October - November



## Cooktown Ironwood

## *Erythrophleum chlorostachys*

**Description** Tree to 15m; Produces long seed pods.

**Location:** Commonly found on plains.

**When to pick:** Collect seed pod when brown. Pods can be found underneath trees or knocked from branches. Take seeds from pod and place into bags. Seeds must be hard and not contain any holes or fungus.

**Seeding time:** March – August.



**White Beech**

***Gmelina dalrympleana***

**Description** Up to 10m tall; produce small pink fruit containing a single seed.

**Location:** Swamps and seasonally inundated areas.

**When to pick:** When ripe, fruit will be pink-red containing a single seed. Remove the flesh and allow the seed to dry.

**Seeding time:** December – February



## Bushmans Peg

## *Grevillea glauca*

**Description** Tree to 8m; Produces large round seed pods that contain two paper thin seeds.

**Location:** Commonly found in wet areas of open forests.

**When to pick:** Remove the black/purple seed pods from trees when they are closed. Place the pods into an open container and leave in the sun. The pods will open allowing seeds to be removed. Seeds can also be collected from the ground immediately after there has been a fire

**Seeding time:** Mature pods can be collected all year



## Dog's balls

## *Grewia retusifolia*

**Description** Small shrub to 1m; Produces clusters of small brown fruits along thin branches.

**Location:** Common in most areas.

**When to pick:** Pick fruits when they are brown and remove the flesh. To remove the flesh fruits can be soaked in water for an hour and then rubbed on a mesh surface. Seeds are small and white.

**Seeding time:** June - September





## Swamp Mahogany

## *Lophostemon suaveolens*

**Description** Tree to 12m; Produces capsules that resemble gum nuts.

**Location:** Commonly found in seasonally inundated areas and swamps.

**Tip:** Look for a patch of small trees in an open area. Have been known to be found in gravel pits located near swamps.

**When to pick:** **Collect seed capsule when green.** Place capsules into an open container and leave to dry for up to a week. Very small brown seeds will fall out of the capsules and settle on the bottom of the container. Remove empty capsules and place into bags.

**Seeding time:** May – August.



**Yellow fruit**

***Maytenus cunninghamii***

**Description** Tree to 4m; Produces yellow capsules that contain a single black seed.

**Location:** Found in most areas but are usually well separated from each other.

**When to pick:** Collect yellow capsules once they have split and are exposing the seed. Remove seed and place into collection bags.

**Seeding time:** May – July.



## Weeping Paperbark

*Melaleuca leucadendra*

**Description** Tall tree to 30m; Produces clusters of small capsules fruits along weeping branches.

**Location:** Common along waterways and swamps.

**When to pick:** Target branches that are close to the ground. Pick capsules when they are closed. Place them in the sun and they will open releasing small sawdust like seeds. Remove open capsules, twigs and leaves (using a strainer/colander) and place the fine seed into bags.

**Seeding time:** May - October



**Broad leaf paperbark**

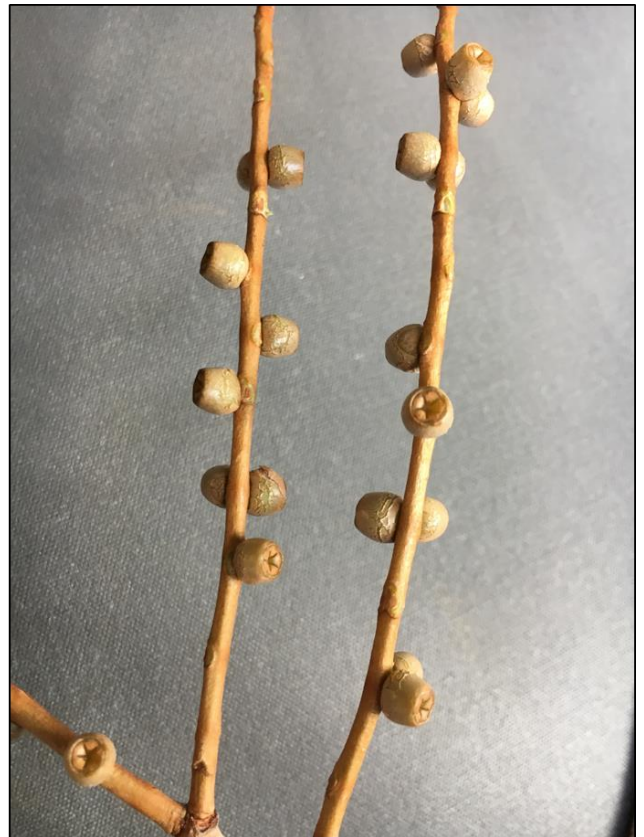
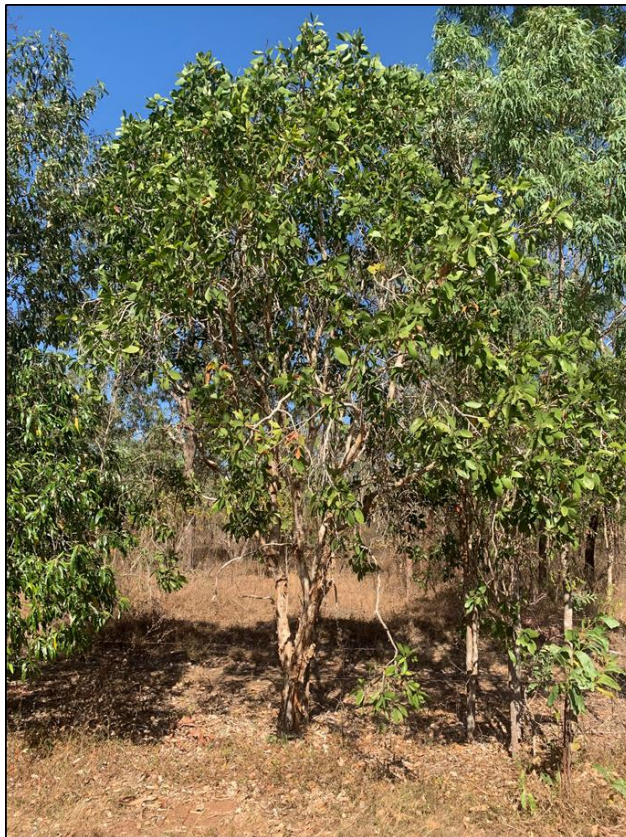
***Melaleuca viridiflora***

**Description** Tree to 10m; Generally, a small tree with paperbark. Seed capsules are found on the end of the branches.

**Location:** Common throughout area

**When to pick:** Collect seed capsules when they are closed. Place in an open container in a dry area. The capsules will open exposing a powder like seed.

**Seeding time:** August– November



## Oyster Bush

## *Morinda reticulata*

**Description:** Shrub to 1m; Distinct white leaves surrounding flowers.

**Location:** Common throughout area

**When to pick:** Pick fruit when they are brown and soft...**not green**. Extract seeds from the fruit, wash/clean and place out to dry

**Seeding time:** March – June



**Note:** The fruits in this picture are not mature and need to turn brown and soft



## Nonda Plum

## *Parinari nonda*

**Description** Tree to 15m; Produces large fleshy fruits that contain a single large seed.

**Location:** Commonly found in wet areas of open forests.

**When to pick:** Collect fruit once they have started to drop from the tree. Remove the flesh and ensure the seed is clean. Dry the seed in a shaded area.

**Limit: Only 1 small bag per collector unless otherwise approved**

**Seeding time:** August - November



**Geebung**

***Persoonia falcata***

**Description** Tree to 10m; Produces fleshy fruits attached to the outer branches.

**Location:** Common throughout area.

**When to pick:** Collect fruits once they have ripened and darkened in colour. Remove the flesh and allow to dry. Ensure no mould or fungus are present.

**Seeding time:** November – January



**Quinine**

***Petalostigma banksii/pubescens***

**Description** Tree to 6m; Produces yellow fruits that crack open when dried.

**Location:** Commonly found in rocky areas such as ironstone plains.

**When to pick:** Collect fruit when yellow and place in a container. Place mesh or light material over the top. The fruits will explode when dried. Seeds are small and brown in colour. Ensure you store seeds above the ground as ants will eat them

**Seeding time:** June – August.





## Hanging Fruit

## *Siphonodon pendulus*

**Description** Tree to 10m; Produces large fruits that contain several seeds.

**Location:** Common throughout area

**When to pick:** Collect fruits once they are soft and turned an off green/pale yellow colour. Split fruit and remove seeds. Place seeds in a shaded area to dry and ensure all pulp is removed.

**Seeding time:** July – October



## Woody Pear

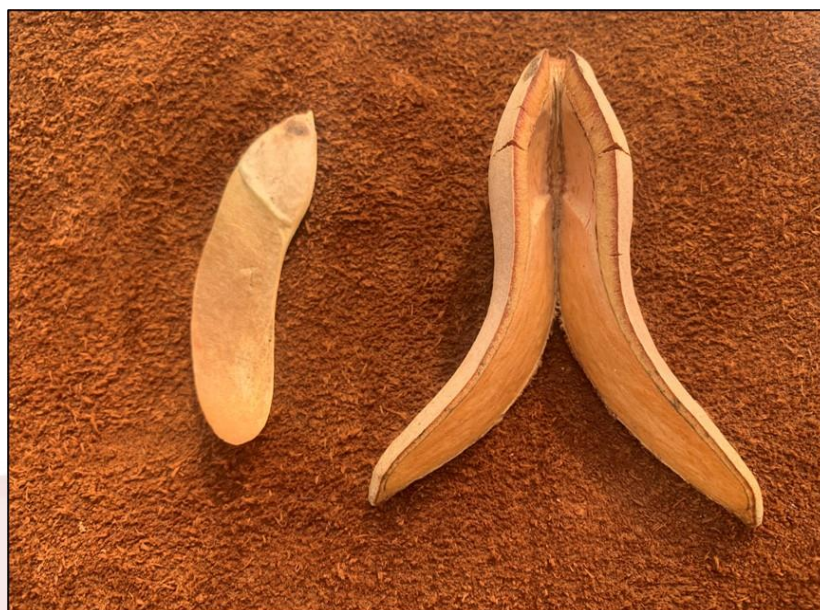
## *Xylomelum scottianum*

**Description** Tall tree to 10m; Produces woody capsules that contain two papery seeds.

**Location:** Common throughout area

**When to pick:** Collect seed pods once they start to open or place tarp under tree once the capsules are open and shake. Place seeds into bags provided.

**Seeding time:** October - December



Collection overstory species. Eucalyptus and Corymbia (bloodwoods).

Types of fruit capsules.

- Corymbia tend to have “urn” shaped capsules.
- Eucalyptus tend to have “disk” shaped capsules.



Corymbia capsule



Eucalyptus capsule



Seeds are similar for Corymbia and Eucalyptus. Both seeds and seed dividers will be accepted.

Always provide a sample of the seed capsules when handing in seed so identification can be confirmed.

## Clarkson's Bloodwood

## *Corymbia clarksoniana*

**Description** Tree to 20m; Grey- brown tessellated bark on all branches.

**Location:** Common throughout Cape York on a variety of soil types.

**When to pick:** Sample seed pods to see if a cross has formed at the top of the capsule. Seed pods will also begin turning a pale green just before opening. Place branches containing pods on a tarp and shelter from the wind. Seed pods should open within a week and the seed will fall onto the tarp. Place the seed into a bag with a **sample of the seed pods** (for identification).

**Seeding time:** Mature pods can be collected from June - September.



## Cabbage leaved Bloodwood

## *Corymbia disjuncta*

**Description** Tree to 20m; Rough tessellated bark at the base of the trunk, then smooth grey bark to outer most branches.

**Location:** Common on the edge of the bauxite plateau.

**When to pick:** Sample seed pods to see if a cross has formed at the top of the capsule. Seed pods will also begin turning a pale green just before opening. Place branches containing pods on a tarp and shelter from the wind. Seed pods should open within a week and the seed will fall onto the tarp. Place the seed into a bag with a **sample of the seed pods** (for identification).

**Seeding time:** Mature pods can be collected from November -January.



## Cape Melville Bloodwood

## *Corymbia nesophila*

**Description:** Very tall tree to 30m; Grey to grey-brown tessellated bark, crumbling when rubbed.

**Location:** Very common on the bauxite plateau.

**When to pick:** Sample seed pods to see if a cross has formed at the top of the capsule. Seed pods will also begin turning a pale green just before opening. Place branches containing pods on a tarp and shelter from the wind. Seed pods should open within a week and the seed will fall onto the tarp. Place the seed into a bag with a **sample of the seed pods** (for identification).

**Seeding time:** Mature pods can be collected from July - October.



## West Cape Bloodwood

## *Corymbia novoguineensis*

**Description** Tree to 25m; Grey - brown tessellated bark on all branches. Often confused with *C. clarksoniana* but has much larger seed capsules.

**Location:** Often found bordering swamps and other poorly drained areas.

**When to pick:** Sample seed pods to see if a cross has formed at the top of the capsule. Seed pods will also begin turning a pale green just before opening. Place branches containing pods on a tarp and shelter from the wind. Seed pods should open within a week and the seed will fall onto the tarp. Place the seed into a bag with a **sample of the seed pods** (for identification).

**Seeding time:** Mature pods can be collected from August - November.



## Blotchy Bloodwood

## *Corymbia stockeri*

**Description** Tree to 15m; Rough tessellated bark at the base of the trunk, then flaky bark that could be pink, yellow or grey along the trunk and branches, to smooth white bark on outer most branches.

**Location:** Common on the bauxite plateau.

**When to pick:** Sample seed pods to see if a cross has formed at the top of the capsule. Seed pods will also begin turning a pale green just before opening. Place branches containing pods on a tarp and shelter from the wind. Seed pods should open within a week and the seed will fall onto the tarp. Place the seed into a bag with a **sample of the seed pods** (for identification).

**Seeding time:** Mature pods can be collected from July -October.





## Cape York red gum

## *Eucalyptus brassiana*

**Description** Tree to 20m; Rough grey bark on the lower trunk with white smooth bark on the remainder of trunk and branches. Leaves have a strong eucalyptus smell.

**Location:** Common on the edges of the bauxite plateau. Often found on damp soils and along waterways and swamps.

**When to pick:** Sample seed pods to see if a cross has formed at the top of the capsule. Seed pods will also begin turning a pale green just before opening. Place branches containing pods on a tarp and shelter from the wind. Seed pods should open within a week and the seed will fall onto the tarp. Place the seed into a bag with a **sample of the seed pods** (for identification).

**Seeding time:** Mature pods can be collected from October - January.



<https://apps.lucidcentral.org/>

## Cullen's Ironbark

## *Eucalyptus cullenii*

**Description** Tree to 15m; Tree has hard, black bark to the outermost branches. Produces small seed capsules.

**Location:** Common on the edges of the bauxite plateau. Often found on soils derived from ironstone.

**When to pick:** Sample seed pods to see if a cross has formed at the top of the capsule. Seed pods will also begin turning a pale green just before opening. Place branches containing pods on a tarp and shelter from the wind. Seed pods should open within a week and the seed will fall onto the tarp. Place the seed into a bag with a **sample of the seed pods** (for identification).

**Seeding time:** Mature pods can be collected from June – November.



<https://apps.lucidcentral.org/>

## Molloy Box

## *Eucalyptus leptophleba*

**Description** Tree to 20m; Tree has grey bark to the outermost branches.

**Location:** Common throughout Cape York on a variety of soil types.

**When to pick:** Sample seed pods to see if a cross has formed at the top of the capsule. Seed pods will also begin turning a pale green just before opening. Place branches containing pods on a tarp and shelter from the wind. Seed pods should open within a week and the seed will fall onto the tarp. Place the seed into a bag with a **sample of the seed pods** (for identification).

**Seeding time:** Mature pods can be collected from June – November.



<https://apps.lucidcentral.org/>

## Cape York Stringybark

## *Eucalyptus megasepala*

**Description** Tree to 20m; Tree has “stringy bark” to the outermost branches. Produces seed capsules that have an elongated keel on the four edges of the capsule. (Often confused with *E. tetradonta* but not common on the bauxite plateau and is generally shorter).

**Location:** Generally found on shallow soils such as ironstone and sandstone. Rarely seen on bauxite.

**When to pick:** Sample seed pods to see if a cross has formed at the top of the capsule. Seed pods will also begin turning a pale green just before opening. Place branches containing pods on a tarp and shelter from the wind. Seed pods should open within a week and the seed will fall onto the tarp. Place the seed into a bag with a **sample of the seed pods** (for identification).

**Seeding time:** Mature pods can be collected from July –September.



<https://apps.lucidcentral.org/>

## Darwin Stringybark

## *Eucalyptus tetradonta*

**Description** Tree to 25m; Tree has “stringy bark” to the outermost branches. Produces seed capsules that appear square in shape.

**Location:** Very common on the bauxite plateau.

**When to pick:** Sample seed pods to see if a cross has formed at the top of the capsule. Seed pods will also begin turning a pale green just before opening. Place branches containing pods on a tarp and shelter from the wind. Seed pods should open within a week and the seed will fall onto the tarp. Place the seed into a bag with a **sample of the seed pods** (for identification).

**Seeding time:** Mature pods can be collected from October - December



<https://apps.lucidcentral.org/>