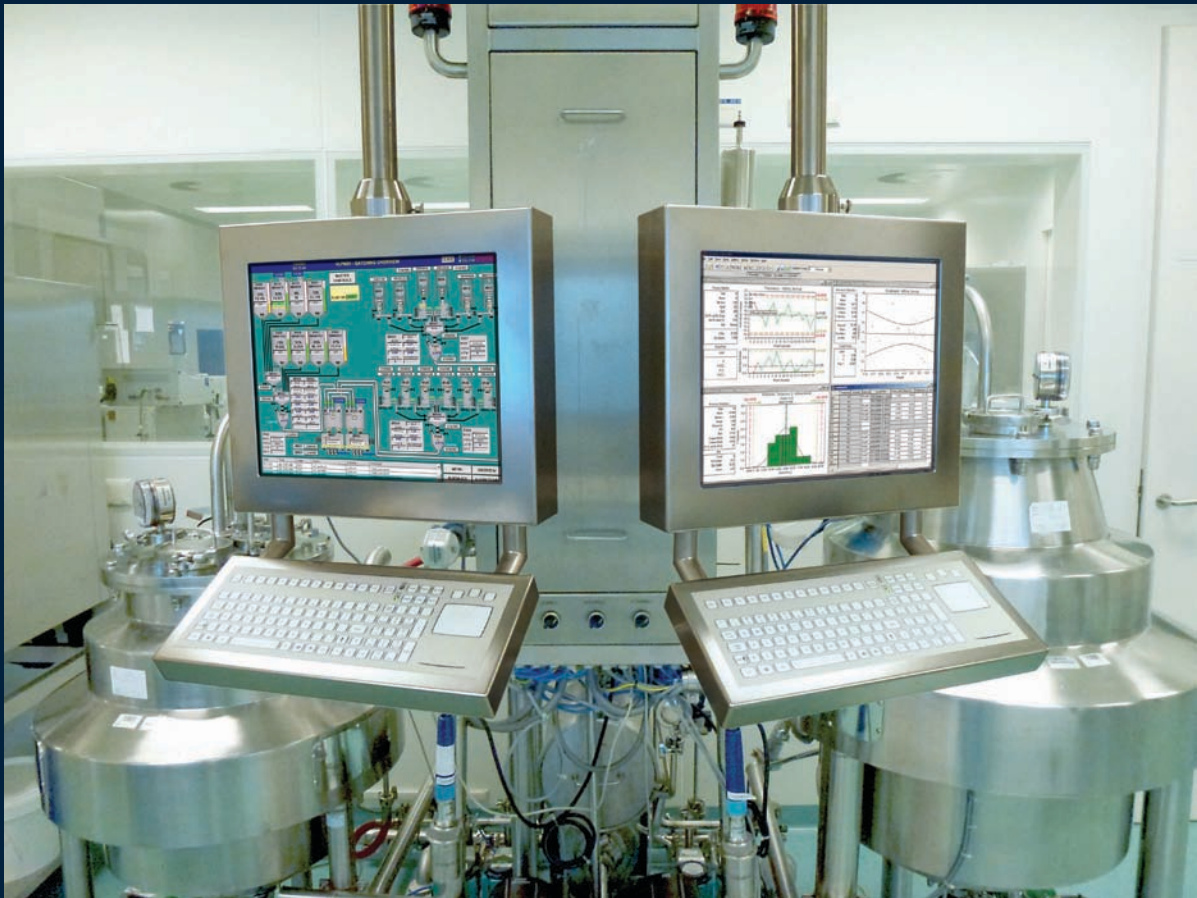




Industrial Keyboards



KEYBOARDS & TRACKBALLS
FOR THE MOST DEMANDING JOBS



Catalogue Content (partnrs. are clickable)

Keyboards with trackball

- KFTC89S1
- RKCT92
- KSTL105
- KBMT106
- KBLT106
- KBMT26
- KSTC36
- KSML38x
- KSML92
- KSML106x
- KSMX106x
- KSME103



Backlit keyboards

- RKCT92
- KSM103x
- KSMX106x
- KSML92
- KSML106x
- KSML38x
- KSME103



Rubber Keyboard

- RKMB105



Keyboards with other pointer

- KSTP105
- KBSP106



Keyboards without pointer

- KSM103x
- KST102
- KBM103
- KBG16F1
- KBM36



This high quality full travel keyboard is designed for comfort over prolonged periods of use.

It uses the latest technologies and integrates a high-end industrial trackball. A reliable, user-friendly solution for all applications which require very accurate pointer control and easy data input.

General specifications

- 89 key full travel professional series keyboard
- Full travel Cherry ML-switch, low profile keycaps, laser engraved
- VESA100 mounting holes M3 on backside of keyboard for easy fixation on the desk
- Dimensions : 380 x 159 x 34 mm
- 1 USB cable, no cable gland
- High Impact Polystyrene enclosure

Trackball

- Integrated industrial 25 mm trackball (mechanical)
- Phenolic resin ball with steel core
- Tracking force 50-80 grams nominal continuous
- Resolution 158 pulses per ball revolution (632 counts per ball revolution)
- Mechanical lifetime 1 million ball revolutions
- IP40 non sealed

Keyboard

- Storage temperature: -40°C - 70 °C 5-95 % RH, non-condensing
- Operating temperature : 0°C to +60°C
- USB output cable 195 cm +/- 10 cm
- Supply voltage : +5V +/- 5% (via keyboard port)
- Supply current : 200mA max.
- Cherry ML switch life time: >20 million actuations
- ROHS REACH compliant
- CE/FCC (NSI)

89 Key Full Travel Keyboard - KFTC89S1

with 25 mm industrial grade trackball



Integrated industrial grade trackball



Mounting holes for easy fixation

Ordering info	
KFTC89S1	Enclosed, USB output, US Qwerty ayout

UL Rating		
Component	Description	UL flammability rating
Trackball module	Mechanical 25mm	UL94 (see detailed document)
Output cable	USB shielded	UI2725
Interconnection cable	Wires (15cm long)	UL1007
	Connectors JST PH series	UL94V-0
Pcb assembly		
keyswitches	ML series	UL94HB
keycaps	ML series	UL94HB
bare pcb		UL796 (see certificates)
connectors	JST PH series	UL94V-0
Assembly item	Self adhesive cable tie FTH-40	UL94HB
Enclosure	High impact polystyrol	UL94HB

See next page

This 92 key backlit NSI keyboard features a compact rubber keyboard with integrated waterproof 25 mm laser trackball and scroll function.

The rubber keys are proven for efficient cleaning, reduced disinfection time and protection against cross contamination. The backlit keys warrant for optimized performance while working in low-light environments.

A non-backlit version is also available.

Main features

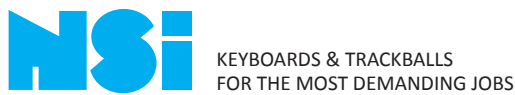
- Compact layout, 92 full travel keys
- Removable 25 mm laser trackball
- Low power LED's warrant for a long life
- No external power supply necessary, keyboard port power sufficient
- Intelligent luminosity setting of "capslock" LED's
- White backlighting as standard, other colours on request.

Panel mount version

- Front panel mounting with studs
- Dimensions / weight : 350 x 159 x 36 mm/ 0,6 kg

Enclosed version

- Dimensions / weight : 353 x 162 x 40 mm / 0,8 kg



Specifications	
Sealing	IP67 sealed
Keys	92 full travel rubber keys
Power requirements	Directly from USB port
Pointing Device	25 mm laser trackball
Operating temperature	0°C to +60°C
Output	one 1,8 m. USB cable
Switch force	210 grams
Switch stroke	2 mm
Lifetime switches	2 million actuations
Specifications Trackball Module	
Ball diameter	Ø50.8mm (2")
Ball material	Epoxy resin, metallic grey
Part numbers (Qwerty Layout)	
RKCT92F1USB-WLED	Panel Mount Backlit
RKCT92F1USB	Panel Mount Non-Backlit
RKCT92S1USB-WLED	Enclosed Backlit
RKCT92S1USB	Enclosed Non-Backlit

Specifications are subject to change without notice.

*92 Key Rubber backlit
Keyboards
IP67 sealed, Full travel
RKCT92*



This NSI keyboard uses short travel switches with low pressure and positive tactile feedback for convenient fast data entry. The keyboard features an integrated removable 50mm trackball. The fields of industrial applications are very wide; indoor- and outdoor where a higher input speed is required while maintaining outstanding sealing characteristics.

Features

- Integrated waterproof 50 mm removable trackball
- Short travel switches of 0,3 mm with low pressure of 2.55N for increased speed typing
- Positive tactile feedback and key embossing
- Optimum legending colour scheme and contrast
- User-friendly layout with separate numerical-, control- and function keypads

Panel mount version

- IP67 frontal sealing
- Added silicon sponge seal for perfect sealing into the user's panel
- Fourteen M4-threaded studs
- Version with edge protection : In case the keyboard can not be sunk mounted we recommend the bezel for edge protection
- Dimensions / weight
version with bezel : 446,1 x 166,3 x 50 mm / 1,3 kg
version without bezel : 432 x 152 x 45 mm / 1,2 kg

Enclosed version

- IP65 sealed
- Mounted in a robust, all steel enclosure
- Industrial epoxy coating (mid-grey).
- Dimensions / weight : 475 x 215 x 57 mm / 3,5 kg

Part numbers			
Keyboard Lay-Out	Panel Mount w. Bezel	Panel mount	Enclosed
US Qwerty	KSTL105 B1 xxx	KSTL105 F1 xxx	KSTL105 S1 xxx
Cyrillic	KSTL105 B7 xxx	KSTL105 F7 xxx	KSTL105 S7 xxx
Belgium Azerty	KSTL105 B32 xxx	KSTL105 F32 xxx	KSTL105 S32 xxx
French Azerty	KSTL105 B33 xxx	KSTL105 F33 xxx	KSTL105 S33 xxx
German Qwertz	KSTL105 B49 xxx	KSTL105 F49 xxx	KSTL105 S49 xxx

xxx = protocol output : PS/2 or USB

*105 Key Short Travel Keyboard with 50mm Trackball
IP67 & IP65 sealed
KSTL105*



KEYBOARDS & TRACKBALLS
FOR THE MOST DEMANDING JOBS

Connectivity

The PS/2 keyboards are supplied with two 1,6 m long shielded straight cable ended with 6 pin mini DIN plugs. The USB versions are supplied with one 1,6m long shielded straight cable ended by a USB type A connector.

** Due to the increasing differences of PS/2 mouse port specifications of the various PC manufacturers, we do recommend that this unit should be tested on the final PC configuration and operating system prior to installing it in series.*

This NSI unit features a full MF (multi-functional) keyboard with separate numeric-, cursor- and control keypads. The robust industrial grade trackball has a ball diameter of 38 mm and allows highest precision in cursor control. The keyboard part is sealed to IP65, the self-adjusting PTFE seal of the trackball enables an IP65 static (ball in rest) protection grade. Colour scheme and legend styling fit with the most recent industrial computer equipment.

Panel mount version

- Front of panel mounting by eight M4-threaded studs
- Metal protection covers on the backside protect the mechanical and electronical components
- Added silicon sponge seal for perfect sealing into the user's panel
- Dimensions / weight : 396 x 180 x 44/32 mm / 1,3 kg

Enclosed version

- The keyboard is housed in a robust steel enclosure
- Will fit into 19" rack drawers (1HU) or can be used as desktop model
- Dimensions / weight : 410 x 204 x 42 / 2,3 kg

Connectivity

The PS/2 keyboards are supplied with two 1,6 m long shielded straight cable ended with 6 pin mini DIN plugs. The USB versions are supplied with one 1,6m long shielded straight cable ended by a USB type A connector.

** Due to the increasing differences of PS/2 mouse port specifications of the various PC manufacturers, we do recommend that this unit should be tested on the final PC configuration and operating system prior to installing it in series.*

**106 Key Keyboards With
38mm Trackball
IP65 sealed
KBMT106**



Part numbers			
Panel Mount		Enclosed	
KBMT106 F1 xxx	US Qwerty	KBMT106 S1 xxx	US Qwerty
KBMT106 F33 xxx	French Azerty	KBMT106 S33 xxx	French Azerty
KBMT106 F34 xxx	Spanish Qwerty	KBMT106 S34 xxx	Spanish Qwerty
KBMT106 F49 xxx	German Qwertz	KBMT106 S49 xxx	German Qwertz
xxx = protocol output : PS/2 or USB			



KEYBOARDS & TRACKBALLS
FOR THE MOST DEMANDING JOBS

This NSI unit features a full MF (multi-functional) keyboard with separate numeric-, cursor- and control keypads. The large, robust industrial grade trackball has a ball diameter of 50 mm and allows highest precision in cursor control. The keyboard part is sealed to IP65, the self-adjusting PTFE seal of the trackball enables an IP65 static (ball in rest) protection grade. Colour scheme and legend styling fit with the most recent industrial computer equipment.

Panel mount version

- Front of panel mounting by eight M4-threaded studs
- Metal protection covers on the backside protect the mechanical and electronical components
- Added silicon sponge seal for perfect sealing into the user's panel
- Dimensions / weight : 396 x 180 x 60/47 mm / 1,5 kg

Enclosed version

- The keyboard is housed in a robust steel enclosure
- Dimensions / weight : 410 x 204 x 65 / 2,8 kg

Connectivity

The PS/2 keyboards are supplied with two 1,6 m long shielded straight cable ended with 6 pin mini DIN plugs. The USB versions are supplied with one 1,6m long shielded straight cable ended by a USB type A connector.

** Due to the increasing differences of PS/2 mouse port specifications of the various PC manufacturers, we do recommend that this unit should be tested on the final PC configuration and operating system prior to installing it in series.*

**106 Key Keyboards with
50mm Trackball
IP65 sealed
KBLT106**



Part numbers			
Panel Mount		Enclosed	
KBLT106 F1 xxx	US Qwerty	KBLT106 S1 xxx	US Qwerty
KBLT106 F33 xxx	French Azerty	KBLT106 S33 xxx	French Azerty
KBLT106 F34 xxx	Spanish Qwerty	KBLT106 S34 xxx	Spanish Qwerty
KBLT106 F49 xxx	German Qwertz	KBLT106 S49 xxx	German Qwertz
xxx = protocol output : PS/2 or USB			



KEYBOARDS & TRACKBALLS
FOR THE MOST DEMANDING JOBS

These handheld NSI keyboards are ideal for applications requiring only a limited number of key functions with fast and comfortable key access and a precise cursor control. This KBMT26 serie has 26 keys and an integrated removable 38mm laser optical trackball. The trackball optical lenses are accessible from the front and can easily be cleaned without dismantling the complete unit. The keyboards are IP65 sealed. They have numeric and function keys; the control keys are available via "Fn" key mapping.

Features

- 26 membrane keys with tactile feel, 1,4 mm travel and 4N operating force
- Integrated 38 mm laser optical trackball with removable ball

Panel mount version

- Front of panel mounting by six M3 mounting studs
- Added silicon sponge seal for perfect sealing into the user's panel
- Dimensions / weight 85 x 205 x 33 mm / 0.2 kg

Enclosed version

- The keyboard is mounted in a very stylish and robust ABS housing
- Dimensions / weight 105 x 210 x 60 mm / 0.4 kg

Connectivity

The PS/2 keyboards are supplied with two 1,6 m long shielded straight cable ended with 6 pin mini DIN plugs. The USB versions are supplied with one 1,6m long shielded straight cable ended by a USB type A connector.

** Due to the increasing differences of PS/2 mouse port specifications of the various PC manufacturers, we do recommend that this unit should be tested on the final PC configuration and operating system prior to installing it in series.*

Part numbers	
KBMT26 F1 xxx	Panel Mount
KBMT26 S1 xxx	Enclosed
xxx = protocol output : PS/2 or USB	

*26 Key Handheld
Keyboards with Laser
Optical Trackball
IP65 sealed
KBMT26*



KEYBOARDS & TRACKBALLS
FOR THE MOST DEMANDING JOBS

This NSI Commander is built around 36 short travel, tactile feel switches - numeric, function and control keys - and a compact 25mm trackball.

The condensed but well defined key layout combined with the use of a compact trackball enables a fast and comfortable access to the most important machine commands and an accurate control of the cursor.

Typical applications are navigation control, general machine control, public access terminals, security systems, and any applications requiring only a limited number of key functions with easy, fast and comfortable access and control.

Features

- 36 short travel keys with tactile feel, 2.55N operating force
- Integrated 25 mm laser optical trackball with removable ball

Panel mount version

- Front of panel mounting by eight M3 mounting studs
- Added silicon sponge seal for perfect sealing into the user's panel
- Dimensions / weight : 182 x 135 x 25 mm / 0,3 kg

Enclosed version

- The keyboard is mounted in a very stylish and robust ABS housing
- Dimensions / weight : 212 x 165 x 27 mm / 0,7 kg

*36 Key Commander
Keyboards with 25mm
Trackball
IP65 sealed
KSTC36*



KEYBOARDS & TRACKBALLS
FOR THE MOST DEMANDING JOBS

Connectivity

The PS/2 keyboards are supplied with two 1,6 m long shielded straight cable ended with 6 pin mini DIN plugs. The USB versions are supplied with one 1,6m long shielded straight cable ended by a USB type A connector.

** Due to the increasing differences of PS/2 mouse port specifications of the various PC manufacturers, we do recommend that this unit should be tested on the final PC configuration and operating system prior to installing it in series.*

Part numbers	
KSTC36 F1 xxx	Panel Mount
KSTC36 S1 xxx	Enclosed
xxx = protocol output : PS/2 or USB	

This Duralight 38 key LED backlit NSI keyboard is built around 38 short travel, tactile feel switches (numeric, function and control keys) and a 38 mm trackball. The compact but well defined key layout combined with an industrial grade trackball enables a fast and comfortable access to the most important machine commands and an accurate control of the cursor.

Features

- Well defined key layout, tactile feel switches
- 38 mm industrial grade trackball
- High brightness LED's with fibre optics
- Illumination of the key legends and contour, the trackball contour
- No external power supply necessary, keyboard port power sufficient
- Dimmable backlighting at 8 levels by two dedicated keys
- Low power LED's warrant for a long life
- White backlighting as standard, other colours on request

Panel mount version

- Aluminium carrier and silicone sponge panel sealing
- Front panel mounting with eight M3 studs
- Added silicon sponge seal for perfect sealing into the user's panel
- Dimensions / weight : 191 x 135 x 36 mm / 0,3 kg

Enclosed version

- The keyboard is mounted in a robust ABS enclosure
- Industrial epoxy coating (mid-grey)
- Dimensions / weight : 221 x 165 x 45 mm / 0,5 kg

Customising

Possible customizing includes adapted backlighting controls, addition of company logo or specific function keys, different layouts, different colour.

Part numbers	
KSML38 F1xxx-zLED	Panel Mount
KSML38 S1xxx-zLED	Enclosed
xxx = protocol output : PS/2 or USB • z = backlighting colour : W = white / R = red	

Compact 38 Key LED Backlit Keyboard IP65 sealed, with 38mm trackball KSML38-LED



KEYBOARDS & TRACKBALLS FOR THE MOST DEMANDING JOBS

Connectivity

The PS/2 keyboards are supplied with two 1,6 m long shielded straight cable ended with 6 pin mini DIN plugs. The USB versions are supplied with one 1,6m long shielded straight cable ended by a USB type A connector.

** Due to the increasing differences of PS/2 mouse port specifications of the various PC manufacturers, we do recommend that this unit should be tested on the final PC configuration and operating system prior to installing it in series.*

Compact LED backlit IP67 keyboard with removable 50mm laser trackball

This “Duralight” 92 key backlit NSI keyboard is approved for use with Solas Marine applications (f.i. ECDIS). The keyboard features a compact full MF keyboard with integrated numpad and a large 50mm laser trackball with removable ball.

Features

- Certificate of Conformity fully compliant with IEC60945
- Compact layout
- Removable 50 mm laser trackball
- High brightness LED’s with fibre optics
- Illumination of the key legends and contour, the trackball contour and even customer logo’s or trademarks.
- Low power LED’s warrant for a long life
- No external power supply necessary, keyboard port power sufficient
- Dimmable backlighting at 8 levels by two dedicated keys
- Intelligent luminosity setting of “numlock” and capslock” LED’s
- White backlighting as standard, other colours on request.

Panel mount version

- Aluminium carrier and silicone sponge panel sealing
- Front panel mounting with holes (for countersunk M4 screws, not included)
- Added silicon sponge seal for perfect sealing into the user’s panel
- Dimensions / weight : 385 x 185 x 50 mm / 1,2 kg
- The rear side components are protected by a covering metal plate

Enclosed version

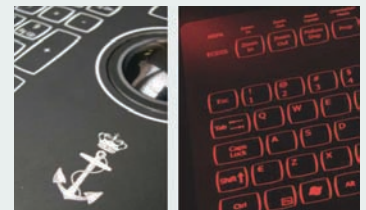
- The keyboard is mounted in a robust, all steel enclosure
- Industrial epoxy coating (mid-grey).
- Dimensions / weight : 418 x 246 x 70 mm / 3,5 kg

Part numbers	
KKSM92 F0001-W-MC1	Panel Mount
KSM92 S0001-W-MC1	Enclosed
US Qwerty layout, USB output, white backlighting	

*IEC 60945 Fully Tested
Marine Backlit Keyboard
KSML92-W-MC1*



KEYBOARDS & TRACKBALLS
FOR THE MOST DEMANDING JOBS



Customization

Possible customization includes adapted backlighting controls, addition of company logo or specific function keys, different layouts, different colour, all this without having to reapply for certification!

106 key backlit Duralight NSI keyboard with long life, low power LED backlighting using fiber optics techniques. The KSML106-LED series has a multi-functional layout with separate numerical- and control keypads and integrates a large 50mm industrial trackball. Illumination of the key legends and contour, the trackball contour and even customer logo's or trademarks.

Features

- User-friendly layout with separate numerical-, control- and function keypads
- High brightness LED's with fibre optics
- Illumination of the key legends and contour, the trackball contour and even customer logo's
- Low power LED's warrant for a long life
- No external power supply necessary, keyboard port power sufficient
- Dimmable backlighting at 8 levels by two dedicated keys
- Intelligent luminosity setting of "numlock" and capslock" LED's
- White backlighting as standard, other colours on request

Panel mount version

- Aluminium carrier and silicone sponge panel sealing
- Front panel mounting by means of M3 threaded studs
- Added silicon sponge seal for perfect sealing into the user's panel
- The rear side components are protected by a covering metal plate
- Version with edge protection: In case the keyboard can not be sunk mounted we recommend the bezel for edge protection
- Dimensions / weight
version with bezel 447,5 x 167,5 x 45 mm / 1,3 kg
version without bezel : 432 x 152 x 45 mm / 1,2 kg

Enclosed version

- The keyboard is mounted in a robust, all steel enclosure
- Industrial epoxy coating (mid-grey).
- Dimensions / weight : 475 x 215 x 57 mm / 3,5 kg

Part numbers	
KSML106 B1 xxx-zLED	Panel Mount with Bezel
KSML106 F1 xxx-zLED	Panel Mount
KSML106 S1 xxx-zLED	Enclosed
US Qwerty layout, USB output, white backlighting • z = backlighting colour : W = white / R = red	

**106 Key LED Backlit Keyboard with 50mm Trackball
IP65 sealed
KSML106-LED**



KEYBOARDS & TRACKBALLS
FOR THE MOST DEMANDING JOBS

Connectivity

The PS/2 keyboards are supplied with two 1,6 m long shielded straight cable ended with 6 pin mini DIN plugs. The USB versions are supplied with one 1,6m long shielded straight cable ended by a USB type A connector.

** Due to the increasing differences of PS/2 mouse port specifications of the various PC manufacturers, we do recommend that this unit should be tested on the final PC configuration and operating system prior to installing it in series.*

This "Duralight" 106 key backlit NSI keyboard keyboard has a multifunctional layout with separate numerical- and control keypads and integrates a large 50mm laser optical trackball.

Features

- User-friendly layout with separate numerical-, control- and function keypads
- High brightness LED's with fibre optics
- Illumination of the key legends and contour, the trackball contour and even customer logo's or trademarks (optional)
- Low power LED's warrant for a long life
- No external power supply necessary, keyboard port power sufficient
- Dimmable backlighting at 8 levels by two dedicated keys
- Intelligent luminosity setting of "numlock" and capslock" LED's
- White backlighting as standard, other colours on request
- Customized backlight control by an external DC voltage, PWM signal or potentiometer is available on request
- Removable ball for easy cleaning

Panel mount version

- Aluminium carrier
- Front panel mounting by means of M3 threaded studs.
- Added silicon sponge seal for perfect sealing into the user's panel
- The rear side components are protected by a covering metal plate
- Version with bezel : In case the keyboard can not be counter sunk mounted we recommend this version
- Dimensions / weight
version with bezel 447,5 x 167,5 x 45 mm / 1,3 kg
version without bezel : 432 x 152 x 45 mm / 1,2 kg

Enclosed version

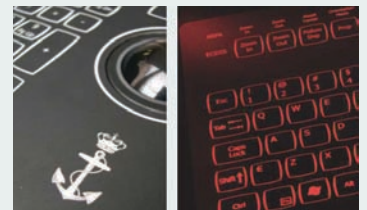
- The keyboard is mounted in a robust, all steel enclosure
- Industrial epoxy coating (mid-grey).
- Dimensions / weight : 475 x 211 x 73 mm / 3,5 kg

*106 Key LED Backlit
Keyboard with 50mm
Trackball
IP67 sealed
KSMX106-LED*



KEYBOARDS & TRACKBALLS
FOR THE MOST DEMANDING JOBS

Part numbers	
KSMX106 B1 USB-WLED	Panel Mount with Bezel
KSMX106 F1 USB-WLED	Panel Mount
KSMX106 S1 USB-WLED	Enclosed
US Qwerty layout	



Customization

Possible customization includes adapted backlighting controls, addition of company logo or specific function keys, different layouts, different colour, all this without having to reapply for certification!

This "Duralight" 103 key backlit NSI keyboard keyboard has a multifunctional layout with separate numerical- and control keypads.

Features

- User-friendly layout with separate numerical-, control- and function keypads
- High brightness LED's with fibre optics
- Illumination of the key legends and contour
- Low power LED's warrant for a long life
- No external power supply necessary, keyboard port power sufficient
- Dimmable backlighting at 8 levels by two dedicated keys
- Intelligent luminosity setting of "numlock" and capslock" LED's
- White backlighting as standard, other colours on request
- Customized backlight control by an external DC voltage, PWM signal or potentiometer is available on request
- Panel **mount version with bezel for edge protection**

Panel mount version with Bezel

- Aluminium carrier
- Front panel mounting by means of M3 threaded studs.
- Added silicon sponge seal for perfect sealing into the user's panel
- The rear side components are protected by a covering metal plate
- Dimensions / weight : 358,7 x 165,8 x 28 mm / 1,1 kg

Part numbers	
Panel Mount with bezel: KSM103 B1 USB-WLED	US Qwerty

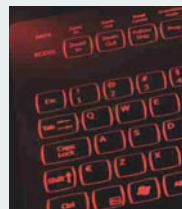
USB output
backlighting colour: W = white (standard); R = red

*103 Key LED Backlit
Keyboard IP67 sealed
KSM103-LED*



KEYBOARDS & TRACKBALLS
FOR THE MOST DEMANDING JOBS

Customization



Possible customization includes adapted backlighting controls, addition of company logo or specific function keys, different layouts, different colour.

Combination

The KSM103B1 keyboard is specially designed to use in combination with the NSI standard trackball TBX50B1



This 105 key keyboard features a compact rubber keyboard with integrated waterproof pointing device and separate numpad. The backlit keys warrant for optimized performance while working in low-light environments. A non-backlit version is also available and a version with VESA-mounting. Options include NVIS compatible backlighting and custom dimming settings.

Features

- Compact layout, 105 full travel keys
- Separate numpad
- Dimmable backlighting at 8 levels by two dedicated keys
- Low power LED's warrant for a long life
- No external power supply necessary, keyboardport power sufficient
- White backlighting as standard, other colours on request.
- Super compact, thickness 15 mm
- Enclosure : Aluminium enclosure, black anodized
- Dimensions / weight : 331 x 110 x 14,95 cm / 0,6 kg.

Specifications

- Sealing : IP65 sealed frontal
- Keys : 105 rubber keys
- Pointing Device : mini thumbstick
- Output : 1,6 m. USB cable
- Power requirements : Directly from USB port
- Operating temp. : -0°C to +70°C
- Storage temp. range : -40°C to +85°C
- Switch force : 300 grams +- 100 grams
- Switch stroke : 1,5 mm
- Lifetime switches : 1 million actuations

Part numbers enclosed rubber keyboard	
Standard Backlit version: RKMB105S1USB-WLED	VESA-mount Backlit version: RKMB105V1USB-WLED
Standard Non-backlit: RKMB105S1USB	VESA-mount Non-backlit: RKMB105V1USB

105 Key Rubber Backlit Keyboards

IP65 sealed frontal, VESA-Mount option



KEYBOARDS & TRACKBALLS
FOR THE MOST DEMANDING JOBS

The NSI KSTP105 keyboard uses short travel switches with low pressure and positive tactile feedback for convenient fast data entry. The keyboard features an integrated touchpad.

The IP67 waterproof level of the panel mount version is obtained thanks to the inherent sealing capabilities of its polyester front and of the touchpad technology with solid state sensing. The fields of industrial applications are very wide; indoor- and outdoor where a higher input speed is required while maintaining outstanding sealing characteristics.

Features

- Short travel switches of 0,3 mm with low pressure of 2.55N for increased speed typing
- Integration of sealed capacitive touchpad
- Positive tactile feedback and key embossing
- Optimum legending colour scheme and contrast
- User-friendly layout with separate numerical-, control- and function keypads

Panel mount version

- IP67 frontal sealing
- Added silicon sponge seal for perfect sealing into the user's panel
- Fourteen M4-threaded studs
- Dimensions / weight : 432 x 152 x 26 mm / 1,3 kg

Enclosed version

- IP65 sealed
- The keyboard is mounted in a robust, all steel enclosure
- Industrial epoxy coating (mid-grey).
- Dimensions / weight : 475 x 215 x 57 mm /2,9 kg

*105 Key Short Travel
Keyboard With Touchpad
IP67 & IP65 sealed
KSTP105*



Part numbers		
Keyboard Lay-Out	Panel mount	Enclosed
US Qwerty	KSTP105 F1 xxx	KSTP105 S1 xxx
Belgium Azerty	KSTP105 F32 xxx	KSTP105 S32 xxx
French Azerty	KSTP105 F33 xxx	KSTP105 S33 xxx
German Qwertz	KSTP105 F49 xxx	KSTP105 S49 xxx
Optional	Covering bezel in blank aluminium	
CFR-01	Covering bezel in blackened aluminium	
CFR-02	<i>(for top panel mount applications)</i>	

xxx = protocol output : PS/2 or USB



KEYBOARDS & TRACKBALLS
FOR THE MOST DEMANDING JOBS

Connectivity

The PS/2 keyboards are supplied with two 1,6 m long shielded straight cable ended with 6 pin mini DIN plugs. The USB versions are supplied with one 1,6m long shielded straight cable ended by a USB type A connector.

** Due to the increasing differences of PS/2 mouse port specifications of the various PC manufacturers, we do recommend that this unit should be tested on the final PC configuration and operating system prior to installing it in series.*

This NSI unit features a full MF (multi-functional) keyboard with separate numeric-, cursor- and control keypads. The touchpad uses the Field Distortion Technology to sense the presence of your finger.

This device is not pressure sensitive, a light touch is sufficient, tracking your fingertip precisely. The complete unit is sealed IP65.

Colour scheme and legend styling fit in with most recent industrial computer equipment.

Panel mount version

- Front of panel mounting by eight M4-threaded studs
- Metal protection covers on the backside protect the mechanical and electronical components
- Added silicon sponge seal for perfect sealing into the user's panel
- Dimensions / weight : 396 x 180 x 32 mm / 1,3 kg

Enclosed version

- The keyboard is housed in a robust steel enclosure
- Dimensions / weight : 410 x 204 x 42 mm / 2,1 kg

Connectivity

The PS/2 keyboards are supplied with two 1,6 m long shielded straight cable ended with 6 pin mini DIN plugs. The USB versions are supplied with one 1,6m long shielded straight cable ended by a USB type A connector.

** Due to the increasing differences of PS/2 mouse port specifications of the various PC manufacturers, we do recommend that this unit should be tested on the final PC configuration and operating system prior to installing it in series.*

*106 Key Keyboards with Touchpad
IP65 Sealed
KBSP106*



Part numbers			
Panel Mount		Enclosed	
KBSP106 F1 xxx	US Qwerty	KBSP106 S1 xxx	US Qwerty
KBSP106 F33 xxx	French Azerty	KBSP106 S33 xxx	French Azerty
KBSP106 F34 xxx	Spanish Qwerty	KBSP106 S34 xxx	Spanish Qwerty
KBSP106 F49 xxx	German Qwertz	KBSP106 S49 xxx	German Qwertz
xxx = protocol output : PS/2 or USB			



KEYBOARDS & TRACKBALLS
FOR THE MOST DEMANDING JOBS

This "Duralight" 106 key backlit NSI keyboard keyboard has a multifunctional layout with separate numerical- and control keypads and integrates a large 50mm laser optical trackball.

Features

- User-friendly layout with separate numerical-, control- and function keypads
- High brightness LED's with fibre optics
- Illumination of the key legends and contour, the trackball contour and even customer logo's or trademarks (optional)
- Low power LED's warrant for a long life
- No external power supply necessary, keyboard port power sufficient
- Dimmable backlighting at 8 levels by two dedicated keys
- Intelligent luminosity setting of "numlock" and capslock" LED's
- White backlighting as standard, other colours on request
- Customized backlight control by an external DC voltage, PWM signal or potentiometer is available on request
- Removable ball for easy cleaning

Panel mount version

- Aluminium carrier
- Front panel mounting by means of M3 threaded studs.
- Added silicon sponge seal for perfect sealing into the user's panel
- The rear side components are protected by a covering metal plate
- Version with bezel : In case the keyboard can not be counter sunk mounted we recommend this version
- Dimensions / weight
version with bezel 447,5 x 167,5 x 45 mm / 1,3 kg
version without bezel : 432 x 152 x 45 mm / 1,2 kg

Enclosed version

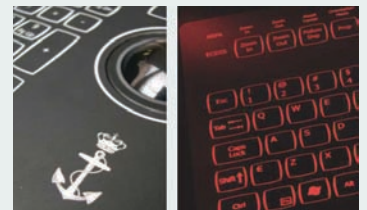
- The keyboard is mounted in a robust, all steel enclosure
- Industrial epoxy coating (mid-grey).
- Dimensions / weight : 475 x 211 x 73 mm / 3,5 kg

*106 Key LED Backlit
Keyboard with 50mm
Trackball
IP67 sealed
KSMX106-LED*



KEYBOARDS & TRACKBALLS
FOR THE MOST DEMANDING JOBS

Part numbers	
KSMX106 B1 USB-WLED	Panel Mount with Bezel
KSMX106 F1 USB-WLED	Panel Mount
KSMX106 S1 USB-WLED	Enclosed
US Qwerty layout	



Customization

Possible customization includes adapted backlighting controls, addition of company logo or specific function keys, different layouts, different colour, all this without having to reapply for certification!

This Duralight 92 key backlit NSI keyboard features a compact full MF keyboard with integrated numpad and a large 50mm laser trackball with removable ball.

Features

- Compact layout
- Removable 50 mm laser trackball
- High brightness LED's with fibre optics
- Illumination of the key legends and contour, the trackball contour and even customer logo's or trademarks.
- Low power LED's warrant for a long life
- No external power supply necessary, keyboard port power sufficient
- Dimmable backlighting at 8 levels by two dedicated keys
- Intelligent luminosity setting of "numlock" and capslock" LED's
- White backlighting as standard, other colours on request

Panel mount version

- Aluminium carrier and silicone sponge panel sealing
- Front panel mounting with holes (for countersunk M4 screws, not included)
- Added silicon sponge seal for perfect sealing into the user's panel
- The rear side components are protected by a covering metal plate
- Dimensions / weight : 385 x 185 x 50 mm / 1,2 kg

Enclosed version

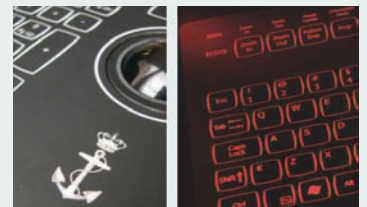
- The keyboard is mounted in a robust, all steel enclosure
- Industrial epoxy coating (mid-grey)
- Dimensions / weight : 418 x 246 x 70 mm / 3,5 kg



KEYBOARDS & TRACKBALLS
FOR THE MOST DEMANDING JOBS

Part numbers	
KSML92 F1 xxx-zLED	Panel Mount
KSML92 S1 xxx-zLED	Enclosed
US Qwerty layout, USB output, white backlighting • z = backlighting colour : W = white / R = red	

92 Key LED Backlit Compact Keyboard with 50mm removable Laser Trackball, IP67 sealed KSML92-LED



Customization

Possible customization includes adapted backlighting controls, addition of company logo or specific function keys, different layouts, different colour, all this without having to reapply for certification!

Connectivity

The PS/2 keyboards are supplied with two 1,6 m long shielded straight cable ended with 6 pin mini DIN plugs. The USB versions are supplied with one 1,6m long shielded straight cable ended by a USB type A connector.

** Due to the increasing differences of PS/2 mouse port specifications of the various PC manufacturers, we do recommend that this unit should be tested on the final PC configuration and operating system prior to installing it in series.*

106 key backlit Duralight NSI keyboard with long life, low power LED backlighting using fiber optics techniques. The KSML106-LED series has a multi-functional layout with separate numerical- and control keypads and integrates a large 50mm industrial trackball. Illumination of the key legends and contour, the trackball contour and even customer logo's or trademarks.

Features

- User-friendly layout with separate numerical-, control- and function keypads
- High brightness LED's with fibre optics
- Illumination of the key legends and contour, the trackball contour and even customer logo's
- Low power LED's warrant for a long life
- No external power supply necessary, keyboard port power sufficient
- Dimmable backlighting at 8 levels by two dedicated keys
- Intelligent luminosity setting of "numlock" and capslock" LED's
- White backlighting as standard, other colours on request

Panel mount version

- Aluminium carrier and silicone sponge panel sealing
- Front panel mounting by means of M3 threaded studs
- Added silicon sponge seal for perfect sealing into the user's panel
- The rear side components are protected by a covering metal plate
- Version with edge protection: In case the keyboard can not be sunk mounted we recommend the bezel for edge protection
- Dimensions / weight
version with bezel 447,5 x 167,5 x 45 mm / 1,3 kg
version without bezel : 432 x 152 x 45 mm / 1,2 kg

Enclosed version

- The keyboard is mounted in a robust, all steel enclosure
- Industrial epoxy coating (mid-grey).
- Dimensions / weight : 475 x 215 x 57 mm / 3,5 kg

Part numbers	
KSML106 B1 xxx-zLED	Panel Mount with Bezel
KSML106 F1 xxx-zLED	Panel Mount
KSML106 S1 xxx-zLED	Enclosed
US Qwerty layout, USB output, white backlighting • z = backlighting colour : W = white / R = red	

*106 Key LED Backlit Keyboard with 50mm Trackball
IP65 sealed
KSML106-LED*



KEYBOARDS & TRACKBALLS
FOR THE MOST DEMANDING JOBS

Connectivity

The PS/2 keyboards are supplied with two 1,6 m long shielded straight cable ended with 6 pin mini DIN plugs. The USB versions are supplied with one 1,6m long shielded straight cable ended by a USB type A connector.

** Due to the increasing differences of PS/2 mouse port specifications of the various PC manufacturers, we do recommend that this unit should be tested on the final PC configuration and operating system prior to installing it in series.*

This Duralight 38 key LED backlit NSI keyboard is built around 38 short travel, tactile feel switches (numeric, function and control keys) and a 38 mm trackball. The compact but well defined key layout combined with an industrial grade trackball enables a fast and comfortable access to the most important machine commands and an accurate control of the cursor.

Features

- Well defined key layout, tactile feel switches
- 38 mm industrial grade trackball
- High brightness LED's with fibre optics
- Illumination of the key legends and contour, the trackball contour
- No external power supply necessary, keyboard port power sufficient
- Dimmable backlighting at 8 levels by two dedicated keys
- Low power LED's warrant for a long life
- White backlighting as standard, other colours on request

Panel mount version

- Aluminium carrier and silicone sponge panel sealing
- Front panel mounting with eight M3 studs
- Added silicon sponge seal for perfect sealing into the user's panel
- Dimensions / weight : 191 x 135 x 36 mm / 0,3 kg

Enclosed version

- The keyboard is mounted in a robust ABS enclosure
- Industrial epoxy coating (mid-grey)
- Dimensions / weight : 221 x 165 x 45 mm / 0,5 kg

Customising

Possible customizing includes adapted backlighting controls, addition of company logo or specific function keys, different layouts, different colour.

Part numbers	
KSML38 F1xxx-zLED	Panel Mount
KSML38 S1xxx-zLED	Enclosed
xxx = protocol output : PS/2 or USB • z = backlighting colour : W = white / R = red	

Compact 38 Key LED Backlit Keyboard IP65 sealed, with 38mm trackball KSML38-LED



KEYBOARDS & TRACKBALLS FOR THE MOST DEMANDING JOBS

Connectivity

The PS/2 keyboards are supplied with two 1,6 m long shielded straight cable ended with 6 pin mini DIN plugs. The USB versions are supplied with one 1,6m long shielded straight cable ended by a USB type A connector.

** Due to the increasing differences of PS/2 mouse port specifications of the various PC manufacturers, we do recommend that this unit should be tested on the final PC configuration and operating system prior to installing it in series.*

NSI Keyboard with trackball for the most demanding jobs. This 103 key backlit keyboard keyboard has a multi-functional layout with separate numerical- and control keypads and integrates a waterproof IP68 sealed ergonomical trackball with scroll wheel.

Keyboard part

- Sealing to IP67
- User-friendly layout with separate numerical-, control- and function keypads
- USB connection

Trackball part

- IP68 sealed waterproof
- Ergonomical design
- 50 mm trackball with hall-effect scroll wheel
- Integrated left, middle and right switch functionality
- Removable ball for easy cleaning
- USB connection

Backlight

- High brightness LED's with fibre optic technology
- Low power LED's warrant for a long life
- No external power supply necessary, keyboard port power sufficient
- Dimmable backlighting at 8 levels by two dedicated keys
- White backlighting as standard, other colours on request
- Customized backlight control by an external DC voltage, PWM signal or potentiometer is available on request

Panel mount version

- Black anodised aluminium carrier
- Front panel mounting by means of M4 threaded studs.
- The rear side components are protected by a covering metal plate
- Dimensions / weight : 214 x 544 x 30/64 mm / 1,7 kg

Enclosed version

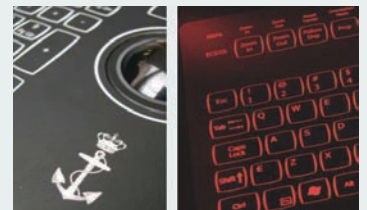
- The keyboard is mounted in a robust, high impact polystyrene (HIPS) enclosure
- Dimensions / weight : 217 x 547 x 63/122 mm / 3,2 kg

Part numbers (Qwerty Layout. Cyrillic on request)	
KSME103 B1 USB-WLED	Panel Mount
KSME103 S1 USB-WLED	Enclosed
Backlighting colour: W = white (standard); R = red, others on request.	

*103 Key LED backlit Keyboard with ergonomical Trackball IP67 sealing
KSME103-WLED*



KEYBOARDS & TRACKBALLS
FOR THE MOST DEMANDING JOBS



Customization

Possible customization includes adapted backlighting controls, addition of company logo or specific function keys, different layouts, different colour, all this without having to reapply for certification!

This KST102 NSI keyboard uses short travel switches with low pressure and positive tactile feedback for convenient fast data entry. The waterproof level of the unit is obtained thanks to the inherent sealing capabilities of its polyester front. The fields of industrial applications are very wide; indoor- and outdoor where a higher input speed is required while maintaining outstanding sealing characteristics.

Ideal for front panel mounting by means of twelve M4-threaded studs. The sealing into the customers' panel is assured by an IP67 grade silicone sponge seal which is part of the supply.

Features

- Short travel switches of 0,3 mm with low pressure of 2.55N for increased speed typing
- Positive tactile feedback and key embossing
- Optimum legending colour scheme and contrast
- User-friendly layout with separate numerical-, control- and function keypads
- Added silicon sponge seal for perfect sealing into the user's panel
- Fourteen M4-threaded studs

Connectivity

The PS/2 keyboards are supplied with two 1,6 m long shielded straight cable ended with 6 pin mini DIN plugs. The USB versions are supplied with one 1,6m long shielded straight cable ended by a USB type A connector.

** Due to the increasing differences of PS/2 mouse port specifications of the various PC manufacturers, we do recommend that this unit should be tested on the final PC configuration and operating system prior to installing it in series.*

*102 Key Short Travel
Panelmount Keyboard
IP67 Sealed
KST102x*



Part numbers	
KST102 F1	US Qwerty
KST102 F7	Cyrillic
KST102 F32	Belgian Azerty
KST102 F33	French Azerty
KST102 F49	German Qwertz



KEYBOARDS & TRACKBALLS
FOR THE MOST DEMANDING JOBS

Small footprint industrial NSI keyboard offering all major functions of a full size MF keyboard : 103 keys wit a separate numerical keypad.

Panel mount version

- Front of panel mounting by six M4 threaded studs
- Metal protection covers on the backside protect the mechanical- and electrical components.
- Added silicon sponge seal for perfect sealing into the user's panel
- Dimensions / weight : 314 x 180 x 20 mm / 0,5 kg

Enclosed version

- The keyboard is housed in a compact, robust steel enclosure
- Will fit into 19" rack drawers (1HU) or can be used as desktop model
- Dimensions / weight : 328 x 204 x 42 mm / 2 kg

Connectivity

The PS/2 keyboards are supplied with one 1,6 m long shielded straight cable ended with a PS/2 type A plug. The USB versions are supplied with one 1,6m long shielded straight cable ended by a USB type A connector. Use the US-keyboard driver stand- ardly available in your operating system.

** Due to the increasing differences of PS/2 mouse port specifications of the various PC manufacturers, we do recommend that this unit should be tested on the final PC configuration and operating system prior to installing it in series.*

**103 Key Compact
Keyboard IP65 sealed
KBM103**



Part numbers	
Panel Mount: KBM103 F1 KBM103 F33 KBM103 F49	US Qwerty French Azerty German Qwertz
Enclosed: KBM103 S1 KBM103 S33 KBM103 S49	US Qwerty French Azerty German Qwertz



KEYBOARDS & TRACKBALLS
FOR THE MOST DEMANDING JOBS

Features

- Touch technology
- 16 keys
- IP68 waterproof
- Front panel mounting by 4 studs
- Trendy glass-look
- Adequate sealing into the customers panel by the added silicone sponge seal

*16 Key Touch Keyboard
IP68 sealed
KBG16F*



Part numbers	
KBG16F1	16 key Touch keyboard



KEYBOARDS & TRACKBALLS
FOR THE MOST DEMANDING JOBS

These 36 keys NSI keyboards enable all major functions of a large MF keyboard in a small outline. Function keys F1 to F16 and complete upper and lower case alphabet are available. Distinct and easy recognition of the different functions due to three different legend colours corresponding with the mode-keys: black for UNSHIFT; red for SHIFT and green for ALPHA mode which is a toggle function indicated by a separate green LED.

These handheld keyboards are ideal for applications requiring only a limited number of key functions with fast and comfortable key acces.

Features

- 36 membrane keys with tactile feel, 1,4 mm travel and 4N operating force
- All major functions of a large MF keyboard in a small outline

Panel mount version

- Front of panel mounting by six M3 mounting studs
- Added silicon sponge seal for perfect sealing into the user's panel
- Dimensions 85 x 176 x 27,5
- Weight 0.1 kg

Enclosed version

- The keyboard is mounted in a very stylish and robust ABS housing
- Dimensions 105 x 210 x 60
- Weight 0,3 kg

Connectivity

The PS/2 keyboards are supplied with one 1,6 m long shielded straight cable ended with a PS/2 type A plug. The USB versions are supplied with one 1,6m long shielded straight cable ended by a USB type A connector. Use the US-keyboard driver standardly available in your operating system.

** Due to the increasing differences of PS/2 mouse port specifications of the various PC manufacturers, we do recommend that this unit should be tested on the final PC configuration and operating system prior to installing it in series.*

*36 Key Handheld
Keyboards IP65 sealed
KBM36*



Part numbers	
KBM36 F1	Panelmount
KBM36 S1	Enclosed



KEYBOARDS & TRACKBALLS
FOR THE MOST DEMANDING JOBS