



SECURITY SOLUTIONS

www.microviewsecurity.com



TABLE OF CONTENTS

| | |
|----------------------------|-----------|
| About Us | 2 |
| AI Camera Rule Set | 3 |
| Our Product Family | 5 |
| Microview AI Box | 7 |
| Featured Camera | 9 |
| Network Camera | 17 |
| AI | 17 |
| Lite | 21 |
| Ultra | 27 |
| Panoramic | 33 |
| PTZ | 37 |
| LPR | 40 |
| Thermal | 45 |
| Explosion Proof | 50 |
| Specialty | 54 |
| NVR | 57 |
| Technology Partners | 64 |
| References | 65 |





About Us

MICROVIEW is powered by MICROLINK NETWORKS LLC - USA. We create and focus on advanced VMS, surveillance hardware, & developing customer relationships.

At **MICROVIEW**, we are committed to quality products, brands that build their reputation on high-quality products are playing the long game. Consumers know the difference and choose well-made products to streamline and stabilize their busy life. Most MicroView products are designed and manufactured in the United States.

Those same **MICROVIEW** products are also compliant with the "Presidential Executive Order on Buy American and Hire American" for manufactured goods.

Made in the USA

We are committed to quality products, with the most advanced features and capabilities for our customers. Most of our products are designed and manufactured in the United States. A subset of our products are designed in the US but assembled elsewhere.



AI Deep Learning Intelligent Video Analytics Camera

Our AI camera is equipped with intelligent video analytics engine (based on DNN:Deep Neural Network) and Ambarella's CV22S SoC with CVflow® architecture filtering and analyzing the data itself as well as video recording.



CVflow



AI Deep Learning Filter

It detects and classify objects with 98% high accuracy. And it significantly reduces false alarms caused by field noise such as moving light, leaves, spiders, rain, and wildlife. Operators can monitor only the objects and specific events they want, reducing data processing and response time, and maximizing operational efficiency by saving storage space.



Dwell



Exit Filters

AI Camera Rule Set

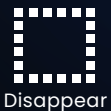
Deep Learning Object Tracker



PRO AI



PRO



“OUR PRODUCT FAMILY”

PRO SERIES

MICROVIEW Network cameras supports some intelligent functions, such as perimeter protection and smart motion detection. It adopts starlight solution, which makes a better image effect in low illuminance.



AI Series



Panoramic Series



Ultra Series



Lite Series



PTZ Series





Specialty Series



Explosion Proof Series



Thermal Series



LPR Series



MICROVIEW BLACK BOX

Equipped with numerous algorithms for deep learning and analysis, the Black Box is a cost-effective AI computing product, which is able to recognize detected objects precisely and immediately. Therefore, the Black Box is a solution platform for the creation of deep learning capable of realizing AI applications, such as Face Recognition, Human-Vehicle Control and Perimeter Alert, etc



Key Features

Scalability of Connectivity

- Fully integrate with Microview network cameras and 3rd party network cameras.
- Support H.265/H.264, offering better compression and substantially improving video quality.

Ease of Use

- Compatible with existing Microview VMS system, meets the need for optimally and purposefully expanded and upgraded.
- Centralized management of diverse attributes at Microview VMS Enterprise.
- HTML5 Web-based configuration.
- Easy configuration and quick system start-up.

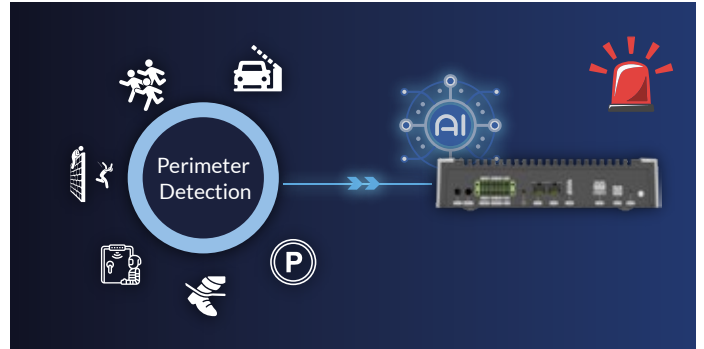
Intelligent Applications

Clientele Classification & Identity Management
Face-human & Recognition, Structure Analysis, such as Face, Body and Vehicle, etc.



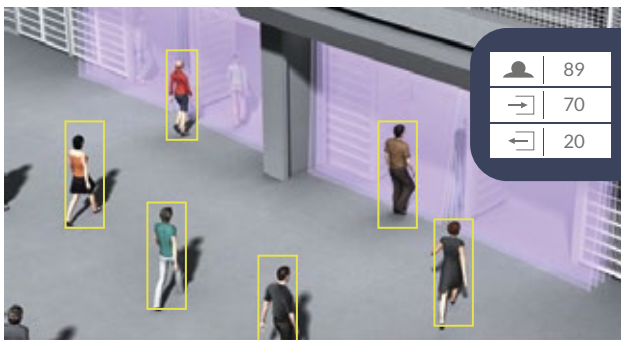
Perimeter Alert Management

Tripwire, Intrusion, Park, Exit, Wander and Over Wall Detection.



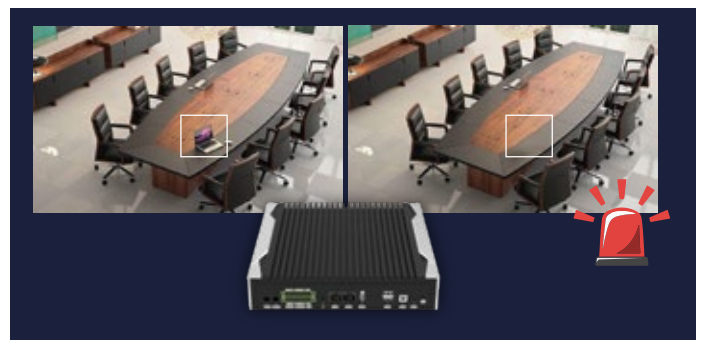
Over-crowd Management

Regional People Counting, Entrance & Exit People Counting.



Objects Management

Sundry Detect, Goods Forget, Goods Guard.



Behavioral Alert Management

Fall, Smoke, Call, Watch Phone, Run, Sleep Detection, etc.





TOTAL
20MP

Multi Sensor-SURROUND

20MP

H.265+

STARLIGHT

Perimeter

AAAA
SMD
VVVV

IP67



The most effective high power IR LEDs

6 high power LEDs up to 30 meters(100ft) visibility recognizes objects clearly at the low-light. It is compact and has excellent performance, such as regular cameras with 45~60 LEDs.

2.7 / 5X Zoom and 4K Ultra Hi-Res

Microview's own designed Zoom Module gives high speed zooming. We have the one with 1/1.8 inch Image sensor, 2.7X Zoom and the other with 1/2.8 inch Image sensor, 5X Zoom. 4K sensor provides clearer and more accurate images.

External Control

Reset / 2nd Video Output / SD Card



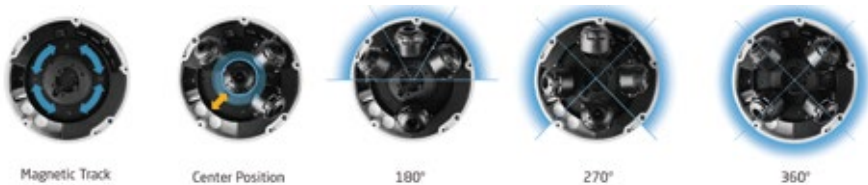
Truly easy to Install

Size wise is even half than other similar performance goods with 3 axis type of double arms bracket that gives the easiest way to install as just one bolt screwing.



Flexible Sensor Arrangement

Easy to arrange 4 magnetic sensors through the track you can get vertical top view through center position and 180°, 270° & 360° view of video



Camera Module

It provides bright images even at night by using a high-sensitivity sensor and users can tilt and pan the module whatever angle they want.

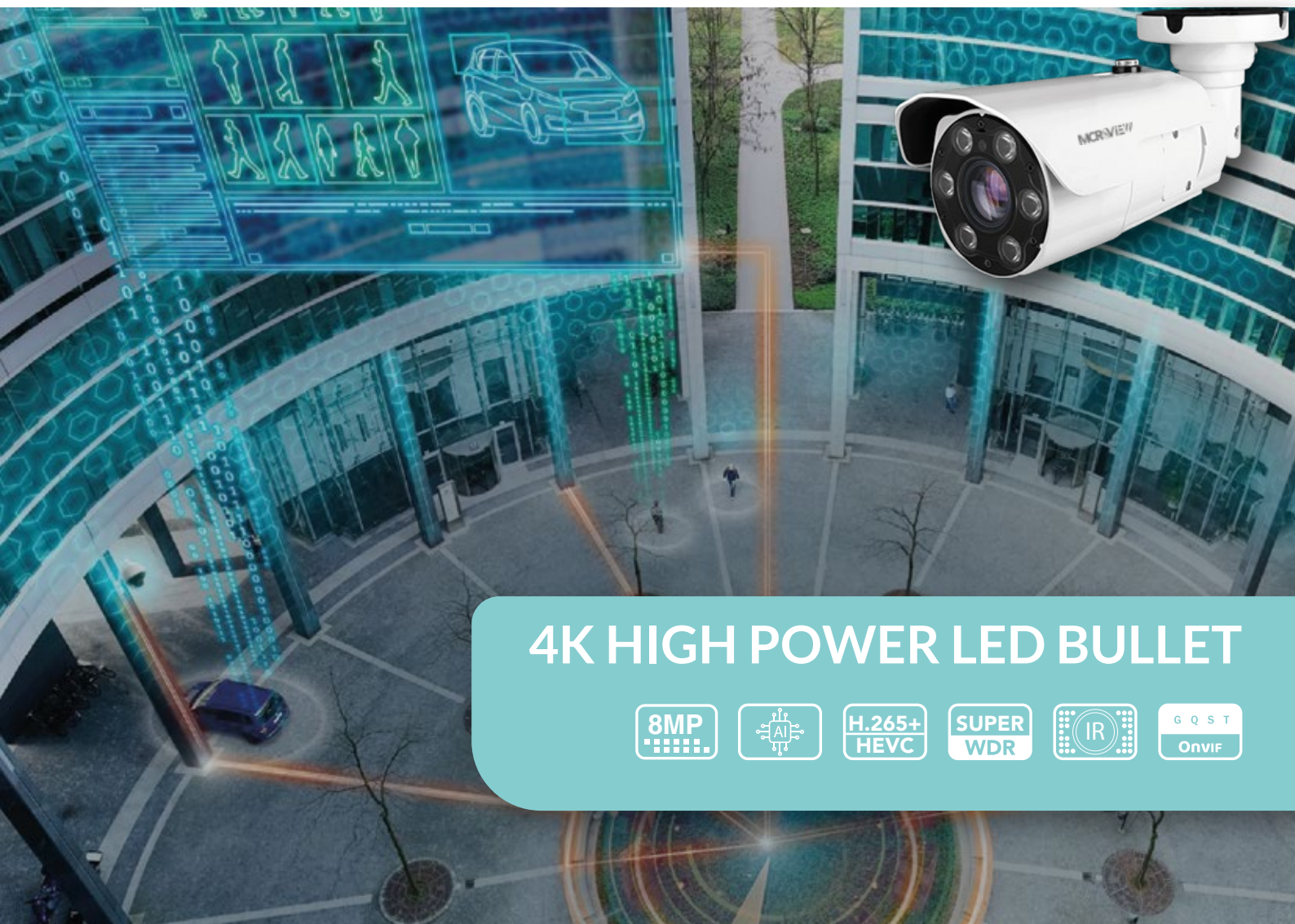
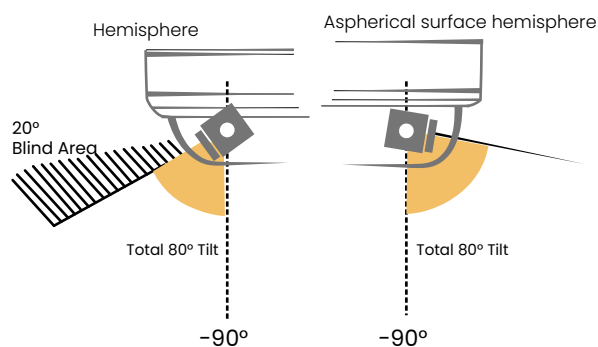


Simple Positioning By Magnet

With magnetic attachable design, the angle of 4 sensors can be easily reposition as desired

Extend Tilt Angle Upto 180°

With aspherical surface hemisphere, it can tilt upto 80° and minimize areas that are obscure



4K HIGH POWER LED BULLET

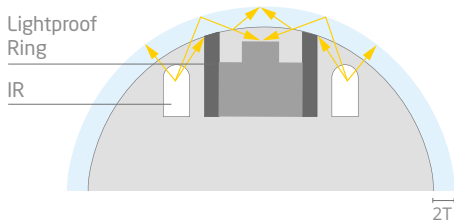
8MP AI H.265+ HEVC SUPER WDR IR G Q S T Onvif



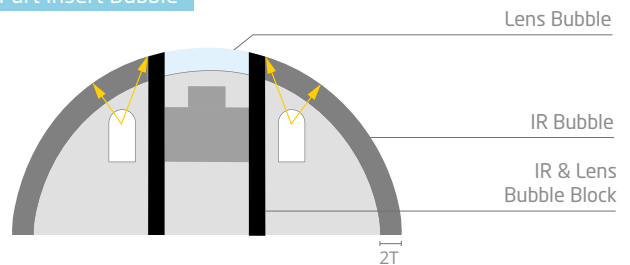
Panoramic SunShield Bullet Camera

- 8MP
- AI
- H.265+ HEVC
- SUPER WDR
- IR
- G Q S T Onvif

Normal Bubble

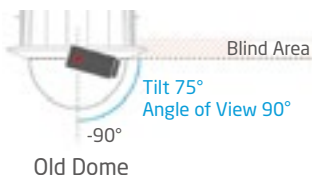
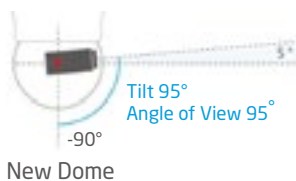


3 Part Insert Bubble



3 Part Insert Bubble

The normal bubble has the IR light reflection on the lens by being reflected from the inside surface of the bubble. MICROVIEW's 3 part insert bubble has a block blocking light from entering the lens so the reflection has decreased dramatically.



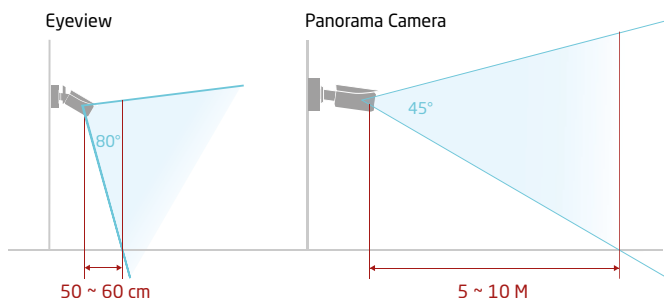
95° tilt supportable at the PTZ

To overcome tilt angle limitation from the normal spherical bubble, the improved bubble can tilt up to 95° without any image distortions.

More compact than anything else

It is compact and light compared to the same performance PTZ camera in a small simple design that can be installed in/outdoor.

Suitable for indoors installation by a focal length of at least 50 to 60cm



Compared to panoramic cameras with a focal length of at least 5 to 10m, it's much easier to install in narrow corridors or buses with the near 50 to 60cm. Also, the compact size doesn't affect interior design when installed indoors, mounts by fitting is easy to install.

4K 180° Panoramic Eyeview

The images output from the 4K sensor supports panoramic views with minimum distortion similar to human vision compared to Fisheye's de-warping images.



Key Feature

- AI Deep Learning Filter
- AI Deep Learning VCA Edge
- Optimized Multiple Profile Streaming
- ROI(Region of Interest)
- Various Web Plug-in



External Control

You can control / access the Reset / 2nd Video Output / Micro SD Card from the outside.



PTZ Varifocal Dome

- AI
- H.265+ HEVC
- SUPER WDR
- Vandal Proof
- G Q S T OnVIF



PTZ Enhance Bullet



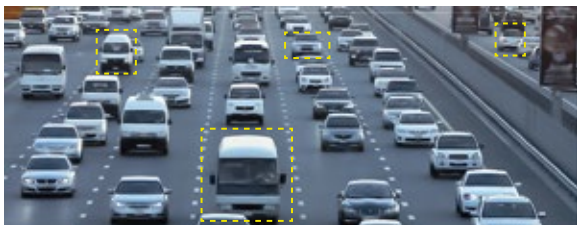
AI-powered LPR Algorithm

Based on AI algorithm, the LPR function provides value-added data via a pre-trained deep learning model and continuously training to algorithms automatically, which can not only recognize vehicle plates in real time with high accuracy, but also identify more vehicle features, like vehicle type, color, etc., generating powerful security and traffic insights.



Traffic Violation Detection

Designed for mission-critical traffic management, AI-based Microview AI Road Traffic Cameras accurately detect and alert violation events such as No-plate Vehicle Detection, Specific Lane Detection, Parking Violation Detection, Speeding Detection, Reverse Driving Detection, Black/White List Detection and Vehicle Event Detection based on recognized vehicle features.



Integrated Supplement Light

Integrated with supplement light of IR LED Light or White LED Light with Max. 40m illumination distance, Microview AI Road Traffic Supplement Light Pro Bullet Plus Camera could not only turn on and off the supplement light, but also change the luminance of the supplement lighting automatically, achieving a flexible way for the monitoring control.



AI Video Analytics

Microview AI Camera can intelligently filter objects to focus on human and vehicle detection in multiple events such as Region Entrance, Region Exiting, Loitering, Advanced Motion Detection, etc.



Face Detection

Face Detection function detects human faces in the monitoring scene and captures the snapshots, which greatly enhances the monitoring efficiency & benefits the large population related industries such as public security, access control and business management.



5X/20X/23X Optical Zoom

The 5X/20X/23X Optical Zoom can zoom up to distant objects while still maintaining the clarity, delivering high quality video over the entire zoom image.



Flexible Pan, Tilt and Zoom Tasks

Microview AI PTZ Bullet Plus offers the ability to fast and precisely rotate on a 360° pan and 75° tilt to survey a wide range of territory.



PTZ Auto Tracking

Once PTZ Auto Tracking function enabled, Microview PTZ cameras could leverage motor mechanism to perform Pan/Tilt/Zoom to track the moving object automatically and adjust zoom status flexibly according to the object distance with the powerful optical zoom capability. Therefore, the target would be shown in the frame center and be zoomed to a proper size, achieving the smart, reliable and real-time video surveillance without any critical details missing.



SUPPLEMENT LIGHT LRP BULLET









BUBBLE FREE GENIUS DOME



360° View Angle

With high sensitivity 12MP sensor and fisheye lens, you can get high resolution image as 360°.



3pcs of High Power IR LED Behind the Black IR bubble

To place IR LED behind the opaque dome to minimize the IR reflection at night.



Different Types of View

Not only the 360° fisheye mode view, 180° panoramic mode and quartered mode are provided with S/W. It dewarps the view.

IP66, Dust & Water Proof

Superior environment protection with its IP66 rating. The device is protected against invasive moisture, dust and even liquids. This superb environment protection is achieved through meticulous sealing and extra protective engineering.



Advanced Multiple Axis Gimbal

Panning, Tilting and rotating of gimbal is even more easily controllable than previous generation of gimbal.



Panning 140° / Rotation 300°



Tilting 80°

Adjusting Lenses with Free Dome cover

It is convenient to adjust the lens without disassembling the dome cover.



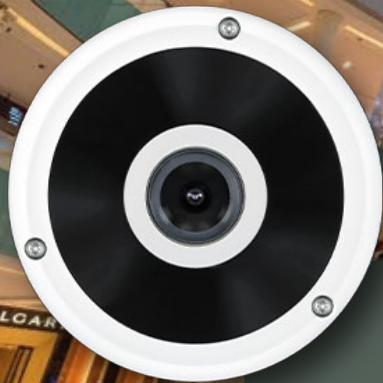
Bubble free dome - Prevent IR reflection

Unlike regular dome cameras, there is no bubble dome cover to minimize IR reflection caused by cobweb, rain, dust, and sand.



External Control

You can control / access the Reset / 2nd Video Output / Micro SD Card from the outside



12MP 360° VIEW FISHEYE DOME



AI Series

MICROVIEW AI Camera Series it detects and classify objects with 98% high accuracy. And it significantly reduces false alarms caused by field noise such as moving light, leaves, spiders, rain, and wildlife. Operators can monitor only the objects and specific events they want, reducing data processing and response time, and maximizing operational efficiency by saving storage space



AI Bullet

MVP8-78-BVAI

Key Feature

- AI Deep Learning Filter, AI Deep Learning VCA Edge
- Weather Proof Design, Water Proof Cable
- Optimized Multiple Profile Streaming
- ROI(Region of Interest)
- Advanced Built in ISP, Fluid Integration Way
- Double Scan Sensor with Advanced Built in ISP (8M)



AI Bullet Plus

MVP6-7-BVAI

Key Feature

- 5MP AI camera
- Intelligent video analysis event support (line/intrusion/queue..)
- Maximum resolution 2592 (horizontal)X1944 (vertical)/30fps
- Horizontal angle of view 98 degrees (wide angle) to 32 degrees (zoom) / 5x optical
- Day & Night (ICR)/IR viewing distance 37 meters
- Backlight Compensation (WDR)



AI Dome

MVP6-7-VOAI

Key Feature

- 5MP AI Camera
- Supports Intelligent Video Analysis Events (Line/Intrusion/Queue Management)
- Maximum Resolution 2592 (Horizontal) X 1944 (Vertical) / 30fps
- Horizontal Field of View 97.7 degrees (2.8mm), 76.6 degrees (4.0mm), 52 degrees (6.0mm) - Fixed Lens Options
- Day & Night(ICR)/Night Vision up to 28 meters



AI Dual Dome

MVP8-710-MSFAI

Key Feature

5MP 2-Channel AI Camera

1 Channel Supports Intelligent Video Analysis Events (Line Crossing, Intrusion, Queue Management, etc.)

Maximum Resolution 2592 (Horizontal) X 1944 (Vertical) per Channel / Simultaneous 2-Channel Operation at Maximum 15fps

Horizontal Field of View 102 degrees (2.8mm), 82 degrees (4.0mm), 52 degrees (6.0mm)



AI Multi Dome

MVP9-720-MSVAI

Key Feature

AI 5MP 4-Channel IR Camera

Intelligent Video Analysis Event Support (Line/Intrusion/Queue..)

Maximum Resolution 2592 (Horizontal) X 1944 (Vertical) / 30fps 4-Channel

Horizontal Field of View 93 degrees (Wide) ~ 51 degrees (Zoom) / Optical2.8x

Day & Night (ICR) / IR Visible Distance 31 meters

Backlight Compensation (WDR)



AI Dome Plus

MVP13-75L-R

Key Feature

5MP AI Camera

Supports Intelligent Video Analysis Events (Line/Intrusion/Queue Management)

Maximum Resolution 2592 (Horizontal) X 1944 (Vertical) / 30fps

Horizontal Field of View 98 degrees (Wide) ~ 32 degrees (Zoom)

5x Optical Zoom

Day & Night(ICR)/Night Vision up to 31 meters



AI Thermal Bullet

MVP3-75-RT

Key Feature

- 5MP + 76.8K dual thermal AI camera
- Intelligent video analysis event support (line/intrusion/queue..)
- Maximum resolution 2592 (horizontal)
- Horizontal angle of view 82 degrees + 56 degrees/fixed lens
- Day & Night(ICR)/IR visibility distance 25 meters
- Uncooled VOx 12 micron thermal imaging sensor



Deep Learning Object & People Tracker

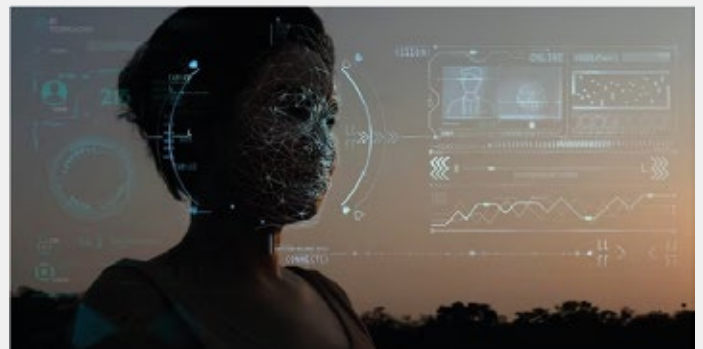
Designed for accurate detection and tracking of people, type of vehicles, and key objects in challenging environments where motion based tracking methods would struggle.

Designed to track people in dense and crowded environments where potentially only the head of a person is visible. Highly accurate and optimized for people counting and behavior detection.



Face Recognition

This technology not only sends an alarm when it recognizes a face that matches a registered person, but it also enables you to expand your business by utilizing the extracted information such as age and gender.



Lite Series

MICROVIEW Lite Camera Series is distinguished by its ultra-compact size, chic style, and simple installation. The Lite Security Cameras not only aim to safeguard your safety with excellent megapixel video quality, but also compliment your style in modern decoration.



IR Lite Dome

MV-P229-ILD, MV-P529-ILD, MV-P829-ILD

Key Feature

2MP/5MP/8MP Dome Network Camera

1/2.8" Progressive Scan CMOS, Fullhan SOC, 120dB WDR, With IR-CUT

1920*1080 @60fps With Internal POE, Upto 25M IR.

Support PoE; Built-in Microphone; SD card, up to 256G; 3-Axis Design

AI Based Video Content Analysis, People Counting, Face Detection, Heat Map

Lens 2.8mm/4mm/6mm@F1.6



Weather Proof Dome

MV-P228-WPD, MV-P528-WPD

Key Feature

2MP/5MP Fixed Dome Weather Proof Lite Network camera

1/2.8" Progressive Scan CMOS, Fullhan SOC, 120dB WDR, With IR-CUT

1920*1080 @60fps With Internal POE, 25M IR.

Support PoE; Built-in Microphone; SD card, up to 256G; 3-Axis Design

AI Based Video Content Analysis, People Counting, Face Detection, Heat Map

Lens 2.8mm/4mm/6mm@F1.6



Vandal Proof Lite Dome

MV-P228-VPD, MV-P528-VPD, MV-P828-VPD

Key Feature

2MP/5MP/8MP Fixed Dome Network Camera

1/2.8" Progressive Scan CMOS, Fullhan SOC, 120dB WDR, With IR-CUT

Smart IR II, 100fps High Frame Rate, P-Iris.

External microSD/SDHC/SDXC card storage up to 256G.

Smart Stream saves 70%~80% bandwidth that of H.264.

Lens 2.8mm/4mm/6mm@F1.6



IR Outdoor Lite Dome

MVP7-22-ILD

Key Feature

- 2MP Dome Network Camera
- 2M 1/2.7" 2.0M CMOS (60fps scan capability)
- Outputs max. 2M (1920 x 1080)@60fps
- Video Compression: H.264, MJPEG
- Privacy Mask Support: 16 Programmable Zone
- Event Trigger: Motion, Alarm, Network disconnection, temperature critical



Weather Proof Dome

MV-P228-WPD, MV-P528-WPD

Key Feature

- 2MP/5MP Fixed Dome Weather Proof Lite Network camera
- 1/2.8" Progressive Scan CMOS, Fullhan SOC, 120dB WDR, With IR-CUT
- 1920*1080 @60fps With Internal POE, 25M IR.
- Support PoE; Built-in Microphone; SD card, up to 256G; 3-Axis Design
- AI Based Video Content Analysis, People Counting, Face Detection, Heat Map
- Lens 2.8mm/4mm/6mm@F1.6



IR Light Bullet

MV-P229-ILB, MV-P529-ILB, MV-P829-ILB

Key Feature

- 2MP/5MP/8MP Fixed Bullet Network Camera
- 1/2.8" Progressive Scan CMOS, Fullhan SOC, 120dB WDR, With IR-CUT
- Smart IR II, 100fps High Frame Rate, P-Iris.
- External microSD/SDHC/SDXC card storage up to 256G.
- Smart Stream saves 70%~80% bandwidth that of H.264.
- Lens 2.8mm/4mm/6mm@F1.6



Vandal Proof Lite Bullet

MV-P228-VPB, MV-P528-VPB, MV-P828-VPB

Key Feature

- 2MP/5MP/8MP Fixed Bullet Vandal proof Lite Network camera
- 1/2.8" Progressive Scan CMOS, Powerful IR LEDs, Up to 30m IR Distance
- Advanced Functions HLC, Defog, ROI
- MicroSD/SDHC/SDXC card storage up to 256Gb
- Adjustable 3-Axis Bracket
- 0.002Lux Starlight



Motorize VF Dome

MV-P228-MVD, MV-P528-MVD, MV-P828-MVD

Key Feature

- 2MP/5MP/8MP Motorized VF DOME Network camera
- 1/2.8" Progressive Scan CMOS, Fullhan SOC, 120dB WDR, With IR-CUT
- Smart IR II Up to 50m, 100fps High Frame Rate, P-Iris
- External microSD/SDHC/SDXC card storage up to 256G
- Smart Stream saves 70%~80% bandwidth that of H.264
- Motorized 2.7~13.5mm/3.0~10.5mm/7~22mm@F1.4 P-Iris(Optional)



Weather Proof Lite Bullet

MV-P228-WPB, MV-P528-WPB, MV-P828-WPB

Key Feature

- 2MP/5MP/8MP Fixed Bullet Network Camera
- 1/2.8" Progressive Scan CMOS, Fullhan SOC, 120dB WDR, With IR-CUT
Up to 50m IR Distance
- 140dB Super WDR, Lens 4mm/2.8mm/6mm@F1.6
- MicroSD/SDHC/SDXC card storage up to 256GB
- Adjustable 3-Axis Bracket
- Advanced Functions HLC, Defog, ROI



Motorized VF Bullet

MV-P228-MVB, MV-P528-MVB, MV-P828-MVB

Key Feature

2MP/5MP/8MP Motorized VF Bullet Network Camera

1/2.8" Progressive Scan CMOS, 140dB Super WDR
(Super WDR Pro is optional for T Series)

Smart IR II Up to 50m, 100fps High Frame Rate

MicroSD/SDHC/SDXC card storage up to 256Gb, Adjustable 3-Axis Bracket

Advanced Functions HLC, Defog, ROI, Lens Motorized
2.7~13.5mm/3.0~10.5mm/7~22mm@F1.4 P-Iris(Optional)



WDR VF Dome

MVP2-22-WFD

Key Feature

2MP Dome WDR VF Lite Network camera

1/2.8" Progressive Scan CMOS, Fullhan SOC, 120dB WDR, With IR-CUT

1/2.8" 2.1M CMOS, IRIS Type Auto Exposure

IR LEDS H2IR

Max Resolution 1920 X 1080

Special Feature Smart LBR, ROI



3 in 1 Super WDR Pro - 140dB

Microview upgraded 3 in 1 Super WDR Pro outputs three frames each line, which is able to bring more details especially moving subjects. What's more, it greatly improves image quality for reducing smear and noisy points. The ratio that the brightest light signal values divided by the darkest light signal values is up to 140dB.

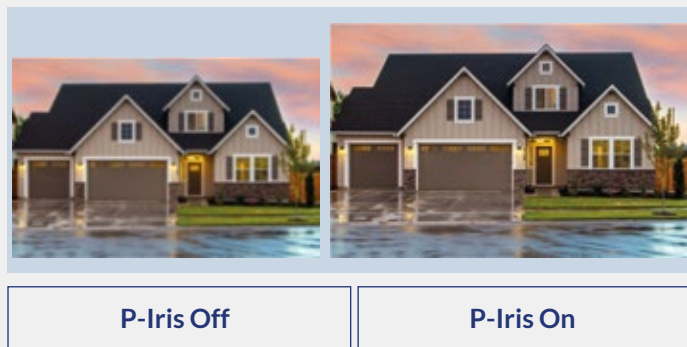


WDR Pro

WDR Off

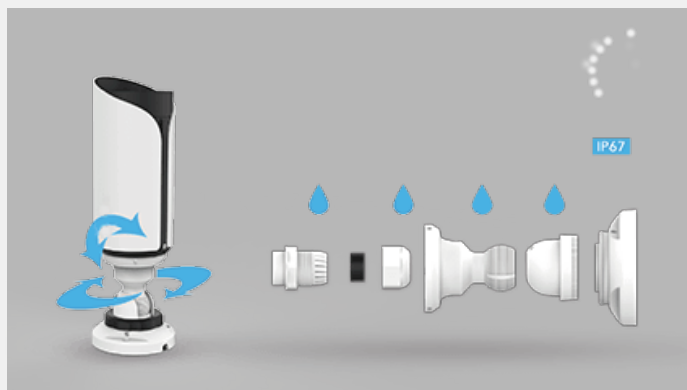
Superior Image Quality- P-Iris Control

Adopting P-Iris control technology, Microview AI Network Camera is able to optimize the iris opening under all lighting conditions, offering images with better contrast, clarity, resolution and depth of field.



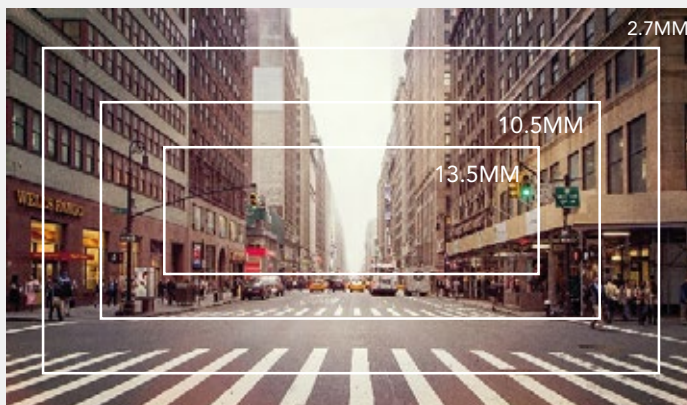
Unique Structure Design

The camera features 3-axis mechanical design for fast and easy adjustment of the camera's viewing angle, allowing to position the camera precisely. Another highlight of the structure lies in the mounting bracket which is able to conceal the cables, offering a well-rounded protection of the cable from any water, dust or shock damages.



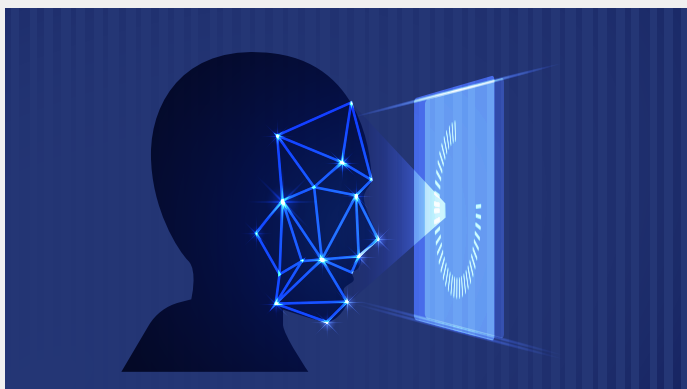
Advanced Motorized Lens

With flexible motorized lens (2.7~13.5mm), the camera is able to capture distant subjects rather than fixing on the specific scene with no flexibility. The ultra wide angle lens brings wider field of view to broaden horizons, leaving the narrow view experiences behind.



Face Detection

Face Detection function detects human faces in the monitoring scene and captures the snapshots, which greatly enhances the monitoring efficiency and benefits the large population related industries such as public security, access control and business management.



Ultra Series

The professional-level network camera series, **MICROVIEW** Ultra Camera Series, is created for those who expect the highest levels of quality, integration, design, and dependability for their demanding surveillance needs.



IR outdoor Dome Camera

MVP7-12-R

Key Feature

2.2M HD IP Outdoor 3.6mm IR Fixed Dome Camera

Outputs max. 2M (1920 x 1080) Controllable frame rate and Bandwidth

Focus Length: 3.6mm, F2.0 / 2.8mm, F1.85 / 6.0mm, F2.0

Built-in IR LED, H2IR, 55ft IR Distance

Streaming Performance: 1080p30 + CIF(352*288 or 352*240) p30 with H.264, H.265 + MJPEG



IR WDR Dome Camera

MVP7-45-R

Key Feature

5.14M HD IP WDR/TDN Outdoor 2.8/4/6/8mm IR Fixed Dome Camera

1/2.8" 5.14M CMOS (Sony Starvis)

Outputs max. 5.14M (2592x1944) Controllable frame rate and Bandwidth

Focus Length: 2.8 mm, F1.8 | 4.0mm, F2.0 | 6.0mm, F2.0 | 8.0mm, F2.0

Built-in IR LED, H2IR, 30M IR Distance

Streaming Performance: 2592x1944p30 + 480p30 with H.264, H265 + MJPEG



IR Flate Dome Camera

MVP13-58-RF

Key Feature

8M HD IP WDR/TDN In/Outdoor 4.0mm IR Flat Dome Camera

1/1.8" 8M CMOS, Focal Length 2.8~6.0mm, F1.6

Focus Auto / Manual

Lens Type Fixed, IR LEDS H2IR, IR Distance 70ft

Max Resolution 3840x2106

Special Feature Smart LBR, ROI



IR Fix Bullet Camera

MVP2-12-R

Key Feature

- 2.2M HD IP Outdoor 3.6mm IR Bullet Camera
- 1/2.9" 2.2M CMOS, Focal Length 3.6mm, F2.0
- Lens Type Fixed
- IRIS Type Auto Exposure, IR LEDS 24 IR, 50ft IR Distance
- Max Resolution 1920 x 1080
- Special Feature Smart LBR, ROI



IR WDR Fix Dome Camera

MVP9-45-R

Key Feature

- 5.14M HD IP WDR/TDN Outdoor 2.8/4/6/8mm IR Fixed Dome Camera
- 1/2.8" 5.14M CMOS (Sony Starvis)
- Outputs max. 5.14M (2592x1944) Controllable frame rate and Bandwidth
- Focus Length: 2.8 mm, F1.8 | 4.0mm, F2.0 | 6.0mm, F2.0 | 8.0mm, F2.0
- Built-in IR LED, H2IR, 30M IR Distance
- Streaming Performance: 2592x1944p30 + 480p30 with H.264, H265 + MJPEG



IR Varifocal Dome Camera

MVP9-12-R, MVP9-22-R, MVP13-58-RV

Key Feature

- 2.2, 2.1, 8MP HD IP WDR/TDN In/Outdoor 2812 IR Fixed Dome Camera
- 1/2.9" 2.2M CMOS, Outputs max. 2.2M (1920 x 1080)@30fps
- Focus Length: 2.7~13.5mm, Manual-IRIS, F1.6
- Streaming Performance: 11080p30 + CIF(352*288 or 352*240) p30 with H.264, H.265 + MJPEG 100Kbps ~ 10Mbps, Multi-rate for Preview and Recording
- Body Material: Aluminum Die-casting



Motorized Ultra Dome

MV-P228-MUB, MV-P528-MUB, MV-P828-MUB

Key Feature

2M/5M/8M AI Motorized Ultra Bullet Network Camera
1/2.8" Progressive Scan CMOS

Smart IR II Combining the High Beam and Low Beam to adjust IR intensity,
IR Distance Up to 60m(3.0~10.5mm/2.7~13.5mm) Up to 100m(7~22mm)

HLC (improving image visibility under strong light sources)

P-Iris (Giving you a more clear scene with depth of view)

Defog (Restoring clear images in hazy and foggy weather),
MicroSD/SDHC/SDXC card storage up to 256GB



Motorized Ultra Bullet

MV-P228-MUD, MV-P220-MUD, MV-P528-MUD, MV-P828-MUD, MV-P818-MUD



Key Feature

2M/5M/8M AI Motorized Ultra Network Camera

1/2.9" 2.2M CMOS, Focal Length 3.6mm, F2.0

Lens Type Fixed

IRIS Type Auto Exposure, IR LEDS 24 IR, 50ft IR Distance

Max Resolution 1920 x 1080

Special Feature Smart LBR, ROI

Motorized Ultra Bullet Plus

MV-P228-MUBP, MV-P220-MUBP, MV-P528-MUBP, MV-P818-MUBP

Key Feature

2M/5M/8M AI Motorized Ultra Bullet Plus,
1/2.8" Progressive Scan CMOS

Smart IR II Combining the High Beam and Low Beam to adjust IR intensity,
IR Distance Up to 60m(3.0~10.5mm/2.7~13.5mm) Up to 100m(7~22mm)

HLC (improving image visibility under strong light sources)

P-Iris (Giving you a more clear scene with depth of view)

Defog (Restoring clear images in hazy and foggy weather),
MicroSD/SDHC/SDXC card storage up to 256GB



Optical Zoom Ultra Bullet Plus

MV-P228-OZBP, MV-P220-OZBP, MV-P528-OZBP, MV-P818-OZBP

Key Feature

2M/5M/8M AI 4X/12X Ultra Bullet Plus, 1/2.9" 2.2M CMOS, Focal Length 3.6mm, F2.0, Up to 180m IR Distance, 140dB Super WDR Pro

Smart IR II Combining the High Beam and Low Beam to adjust IR intensity

HLC (Improving image visibility under strong light sources)

Smart Stream saves on H.265+ 70%~80% bandwidth that of H.264

Defog (Restoring clear images in hazy and foggy weather)
MicroSD/SDHC/SDXC card storage up to 256GB



WDR Outdoor Bullet Camera

MVP3-12-RB

Key Feature

2.2M HD IP WDR Outdoor 2812 IR Bullet Camera

1/2.9" 2.2M CMOS, 90ft IR Distance

Focal Length 2.7~13.5mm, Manual-IRIS, F1.6

Lens Type Manual Varifocal, IRIS Type Auto Exposure

IR LEDS H3IR(High Power LED), Max Resolution 1920 x 1080

Special Feature Smart LBR, ROI



IP MINI Outdoor Bullet Camera

MVP5-22-RB

Key Feature

2M HD IP MINI Bullet Camera

1/2.8" 2.1M CMOS (Sony Starvis), 2.8~12mm, F1.4, Two motor MFZ

IRIS Type P-IRIS, IR LEDS H2IR, IR Distance 50M, Max Resolution 1920 x 1080

Special Feature Smart LBR, ROI, Motion, Alarm, Network disconnection, Temperature critical

Body Material: Aluminum Die-casting



IR Motorized Varifocal X12 Bullet Camera

MVP7-58-RS

Key Feature

8M HD IP WDR/TDN In/Outdoor X2.7 IR Bullet Camera 1/2.8" Progressive Scan CMOS

1/1.8" 8M CMOS, 3.6-10mm/ F1.5, Two motor MFZ

IRIS Type P-IRIS, IR LEDS H2IR, IR Distance 100ft

IR LEDS H6IR

Max Resolution 3840x2160

Special Feature Smart LBR, ROI



Revolutionary IR Performance

To maximize the IR performance, the AI Vandal-proof Mini Bullet Network Camera innovated both in the structure and technology. The advanced Smart IR II technology guarantees IR performance with adjustable illumination intensity. The infrared light transmittance is greatly increased with IR anti reflection panel which is well designed for better IR effect.



4K Ultra High Resolution

4K provides clearer and more accurate images with resolutions up to four times higher than standard HDTV 1080p resolution. It is becoming a new standard for video security systems that require ultra high resolution smart surveillance.



Panoramic Series

Advanced technology is used in the **Microview** Panoramic Camera Series to provide panoramic vision. Detailed images and an enjoyable viewing experience are ensured by superior resolution and modern design.



Panoramic Lite Dome

MV-P528-PNLD, MV-P828-PNLD

Key Feature

5MP / 4K AI Panoramic Network Camera, 1/2.8" Progressive Scan CMOS

Advanced Functions such as HLC, ROI

Integrated Junction Box, Up to 15m IR Distance

Smart Stream saves on H.265+ 70%~80% bandwidth that of H.264

Built-in Microphone

MicroSD/SDHC/SDXC card storage up to 256GB



Panoramic Fisheye Dome

MV-P818-PNFB, MV-P1217-PNFB

Key Feature

8/12MP Ultra High Resolution

Multi-interface (built-in Microphone, Audio I/O, Alarm I/O and DC 12V)

1/1.8" Progressive Scan CMOS

Smart Stream saves on H.265+ 70%~80% bandwidth that of H.264

120dB Super WDR, Up to 15m IR Distance

MicroSD/SDHC/SDXC card storage up to 256GB



Panoramic SunShield Bullet Camera

MVP3-A16

Key Feature

1/1.8" 8.0M CMOS

AI Deep Learning Filter, AI Deep Learning VCA Edge

Optimized Multiple Profile Streaming, ROI(Region of Interest)

Various Web Plug-in

Smart AVC, Advanced built in ISP

Edge storage Micro SD, Micro SDHC, Micro SDXC



Panoramic Lite Bullet

MVP3-A16, MVP3-A16

Key Feature

5MP / 4K AI Panoramic Network Camera, 1/2.8" Progressive Scan CMOS

Advanced Functions such as HLC, ROI

Adjustable 3-Axis Bracket

Smart Stream saves on H.265+ 70%~80% bandwidth that of H.264

Built-in Microphone, Up to 15m IR Distance

microSD/SDHC/SDXC card storage up to 256GB



Panoramic WDR Dome Camera

MVP3-A16

Key Feature

4 Sensor Surround Dome MFZ Camera Total 20M

1/2.8" 5.14M CMOS(x4)

Focal Length 2.8~8.0mm / F1.6

Lens Type Two motor MFZ, IRIS Type Auto Exposure

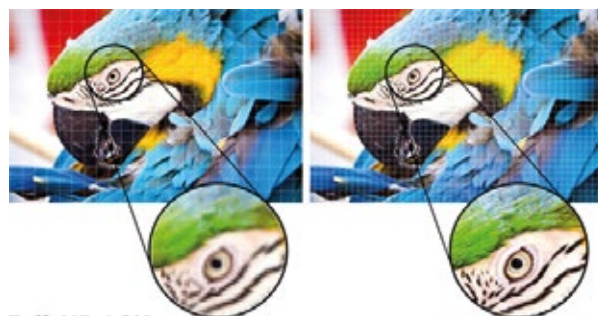
Video Compression H.264, H.265, MJPEG

Max Resolution 2592 x 1944 (x4ch), Special Feature Smart LBR, ROI



4K Ultra High Definition

The AI Panoramic Network Camera features with 4K ultra high definition which better restores the images to guarantee superb image quality of 3840x2160. The camera is a special model which produces spherical image and will have the dewarp process to adjust the original images to offer presented images. Therefore, the high resolution is vital for the model.



Full-HD / 2K
1920 x 1080 pixel

Ultra-HD / 4K
3840 x 2160 pixel

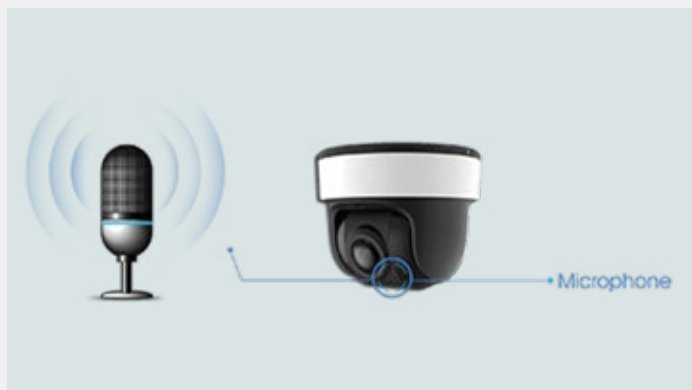
180° Panoramic View

Microview AI 180° Panoramic Lite Dome or Bullet Network Camera is perfect for ultra-wide area monitoring, especially because it can great merge itself into surroundings. It catches 180° horizontal and 95° vertical coverage, achieving extra wide angle viewing with only one single sensor.



Advanced Built-in Microphone

Adopting the advanced codec in microphone, the AI 180° Panoramic Network Camera is able to provide a clearer voice. It's worth mentioning that Microview uses PTFE Membrane to protect the built-in mic, ensuring IP67-rated weather-proof capability for reliable performance.



IP67 & IK10

Supporting IP67-rated weather proofing and IK10-rated vandal proofing which are the leading level of the industry, the AI 180° Panoramic Network Camera is well protected against adverse impacts to ensure the robust performance.



Easy Tilt and Rotation angle adjustment _ VM5 / VM3 / VM2

User can tilt and rotation the module whatever angle they want.

And adjust the vari-focal lens.



PTZ Series

Wide area coverage and all-around tracking are made possible by the pan, tilt, and zoom capabilities of the **MICROVIEW** PTZ Camera Series. The cameras feature superb, finely detailed zoom-in views in response to their high resolution and HEVC compression.



PTZ Ultra Dome

MV-P228-X12-PTZ-UD, MV-P228-X23-PTZ-UD,
MV-P220-X20-PTZ-UD, MV-P520-X12-PTZ-UD

Key Feature

- AI 5X/12X/20X/23X PTZ Network Camera, 1/2.8" Progressive Scan CMOS
- Smart IR II Combining the High Beam and Low Beam to adjust IR intensity.
- Smart Stream saves on H.265+ 70%~80% bandwidth that of H.264.
- Smart PTZ Motion Detection, Up to 160m IR Distance
- Keyboard Control, Preset Freezing, 3D Positioning, PTZ Limits, Initial Position
- New-generation PTZ Motor



PTZ Varifocal Dome

NPX5-A2-R

Key Feature

- X30 HD IP PTZ In/Outdoor IR Camera
- 1/3" 2.55M CMOS, 4.3~129mm, F1.6~F4.7
- AF Module, Auto Exposure, IR LEDS H6IR, 200ft IR Distance
- Max Resolution 1920 x 1080
- Special Feature Smart LBR, ROI
- Video Compression H.264, H.265, MJPEG



AI 5X/12X/20X/23X PTZ Network Camera

MV-P228-X12-PTZ-UB, MV-P528-X12-PTZ-UB

Key Feature

- 1/2.8" Progressive Scan CMOS
- Smart PTZ Motion Detection
- Smart IR II Combining the High Beam and Low Beam to adjust IR intensity
- Smart Stream saves on H.265+ 70%~80% bandwidth that of H.264
- Keyboard Control (Shortcut keys for PTZ control via Keyboard.)
- IR LEDS & White LED



PTZ Enhance Bullet

**MV-P228-X23-PTZ-EB, MV-P220-X20-PTZ-EB, MV-P528-X23-PTZ-EB,
MV-P818-PTZ-EB, MV-P818-X20-PTZ-EB**

Key Feature

AI 5X/12X/20X/23X PTZ Network Camera, 1/2.8" Progressive Scan CMOS

Smart IR II Combining the High Beam and Low Beam to adjust IR intensity

Smart Stream saves on H.265+ 70%~80% bandwidth that of H.264

Smart PTZ Motion Detection, Up to 180m IR Distance

Keyboard Control, 140dB Super WDR Pro

New-generation PTZ Motor



PTZ-Speed Dome

**MV-P228-X23-PTZ-SD, MV-P228-X30-PTZ-SB, MV-P228-X42-PTZ-SB,
MV-P220-X36-PTZ-SD, MV-P528-X23-PTZ-SD, MV-P528-X30-PTZ-SB,
MV-P528-X42-PTZ-SB, MV-P818-X36-PTZ-SB**



Key Feature

AI 23X/30X/36X/42X PTZ Network Camera, 1/2.8" Progressive Scan CMOS

Smart IR II Combining the High Beam and Low Beam to adjust IR intensity

Smart Stream saves on H.265+ 70%~80% bandwidth that of H.264

Smart PTZ Motion Detection

Keyboard Control, 100fps High Frame Rate

PTZ Wiper Speed Dome

**MV-P220-X36-WSD, MV-P220-X30-WSD, MV-P228-X42-WSD,
MV-P528-X30-PTZ-WSD, MV-P528-X42-PTZ-WSD, MV-P818-X36-PTZ-WSD**

Key Feature

AI 30X/36X/42X PTZ Speed Dome Camera

Smart IR II Combining the High Beam and Low Beam to adjust IR intensity,
Smart Stream saves on H.265+ 70%~80% bandwidth that of H.264

Smart PTZ Motion Detection, 1/2.8" Progressive Scan CMOS

Keyboard Control (Shortcut keys for PTZ control via Keyboard)

100fps High Frame Rate, IR LEDs & White LED



MV Key Board

MV-PK02

Key Feature

Support Network connection for easy connection and control of Microview NVRs and PTZ cameras

Built-in Web Server to support the use of browser to easily manage and maintain the keyboard

Support 4-axis variable speed joystick, Support to control up to 110 devices

Designed with a LCD screen on operation panel to easily display operations

Shortcut keys for NVR control, such as snapshot and audio operation

Shortcut keys for recording and playback control, such as record, play, stop, pause, speed up and speed down



5X/20X/23X Optical Zoom

The 5X/20X/23X Optical Zoom can zoom up to distant objects while still maintaining the clarity, delivering high quality video over the entire zoom image.



PTZ Auto Tracking

Once PTZ Auto Tracking function enabled, Microview PTZ cameras could leverage motor mechanism to perform Pan/Tilt/Zoom to track the moving object automatically and adjust zoom status flexibly according to the object distance with the powerful optical zoom capability. Therefore, the target would be shown in the frame center and be zoomed to a proper size, achieving the smart, reliable and real-time video surveillance without any critical details missing.



LPR Series

The professional-level network camera series, **MICROVIEW** LPR Camera Series, is created for those who expect the highest levels of quality, integration, design, and dependability for their demanding surveillance needs.



LPR Lite Bullet

MV-P228-LLB, MV-P528-LLB

Key Feature

- 2/5MP LPR GCC Version, 1/2.8" Progressive Scan CMOS
- Smart IR II Combining the High Beam and Low Beam to adjust IR intensity
- Advanced Functions i.e HLC, Defog, ROI
- MicroSD/SDHC/SDXC card storage up to 256GB
- Adjustable 3-Axis Bracket, Up to 50m IR Distance
- Smart Stream saves on H.265+ 70%~80% bandwidth that of H.264



LPR Ultra Bullet

MV-P228-LUB, MV-P528-LUB

Key Feature

- 2/5MP LPR GCC Version, 1/2.8" Progressive Scan CMOS
- Smart IR II Combining the High Beam and Low Beam to adjust IR intensity
- Smart Stream saves on H.265+ 70%~80% bandwidth that of H.264
- P-Iris (Giving you a more clear scene with depth of view)
- Defog (Restoring clear images in hazy and foggy weather)
- MicroSD/SDHC/SDXC card storage up to 256G, Up to 65m(3.0~10.5mm/2.7~13.5mm) Up to 100m(7~22mm)



LPR Ultra Plus Bullet

MV-P228-LUPB, MV-P220-LUPB, MV-P528-LUPB

Key Feature

- 2/5MP LPR GCC Version, 1/2.8" Progressive Scan CMOS
- Smart IR II Combining the High Beam and Low Beam to adjust IR intensity
- Smart Stream saves on H.265+ 70%~80% bandwidth that of H.264
- HLC (Improving image visibility under strong light sources)
- Defog (Restoring clear images in hazy and foggy weather)
- MicroSD/SDHC/SDXC card storage up to 256GB, Up to 180m IR Distance



LPR Ultra Radar Bullet

MV-P228-LURB, MV-P220-LURB, MV-P528-LURB

Key Feature

- 2/5MP LPR GCC Version, 1/2.8" Progressive Scan CMOS
- Smart IR II Combining the High Beam and Low Beam to adjust IR intensity
- Advanced Functions i.e HLC, Defog, ROI
- MicroSD/SDHC/SDXC card storage up to 256GB
- Adjustable 3-Axis Bracket, Up to 180m IR Distance
- Smart Stream saves on H.265+ 70%~80% bandwidth that of H.264



LPR PTZ Bullet

MV-P228-UPB, MV-P528-UPB

Key Feature

- 2/5MP LPR GCC Version, 1/2.8" Progressive Scan CMOS
- Smart IR II Combining the High Beam and Low Beam to adjust IR intensity
- Smart Stream saves on H.265+ 70%~80% bandwidth that of H.264
- Smart PTZ Motion Detection, Up to 140m IR Distance
- Keyboard Control, 300 Preset Positions
- 5.3~64mm, 12X Optical Zoom, 140dB Super WDR



LPR PTZ Plus Bullet

MV-P220-UPPB, MV-P220-X20-UPPB, MV-P520-UPPB

Key Feature

- 2/5MP LPR GCC Version, 1/2.8" Progressive Scan CMOS
- Smart IR II Combining the High Beam and Low Beam to adjust IR intensity
- Smart Stream saves on H.265+ 70%~80% bandwidth that of H.264
- PTZ Auto Tracking(Track the moving objects in a proper size automatically)
- Keyboard Control (Shortcut keys for PTZ control via Keyboard)
- 300 Preset Positions, Up to 180m IR Distance



LPR PTZ Dome

MV-P220-LPD, MV-P228-LPD

Key Feature

- 2MP LPR GCC Version, 1/2.8" Progressive Scan CMOS
- Smart IR II Combining the High Beam and Low Beam to adjust IR intensity
- Smart Stream saves on H.265+ 70%~80% bandwidth that of H.264
- PTZ Auto Tracking(Track the moving objects in a proper size automatically)
- Keyboard Control (Shortcut keys for PTZ control via Keyboard)
- 300 Preset Positions, Up to 300m IR Distance



LPR PTZ Supplement Light LRP Bullet

MV-P220-SLLB, MV-P228-SLLB

Key Feature

- 2MP LPR GCC Version, 1/2" Progressive Scan CMOS
- HLC (Improving image visibility under strong light sources)
- Smart Stream saves on H.265+ 70%~80% bandwidth that of H.264
- Combines 3 frames with multiple exposures to get the optimal images
- Defog (Restoring clear images in hazy and foggy weather)
- Versatile Interfaces, 8~32mm, 4X Optical Zoom, 140dB Super WDR



LPR PRO PTZ Dome

MV-P220-LPPD, MV-P228-LPPD

Key Feature

- 2MP LPR GCC Version, 1/2.8 Progressive Scan CMOS
- Support PoE; SD card, up to 256G, 6KV Surge Protection, Heater
- Support H.265+/H.265/H.264+/H.264, AI Based Video Content Analysis
- 23X/36X Optical Zoom; PTZ Position Display, 3D positioning,
- 300 Preset Points, 8 Patrols, up to 48 presets each patrol; 4 Patterns
- 360° endless Pan, Pan Manual Speed: 0.1°~400%/s, Preset Speed: 400%/s



Thermal Series

MICROVIEW Thermal Cameras are significantly less affected by weather conditions like fog, smog, rain, and snow than visible cameras and work better in low light or even no light at all and offer perimeter security, weather monitoring, and round-the-clock monitoring



Bullet Camera Fix Lens

MV-P438-BCF, MV-P4315-BCF, MV-P4325-BCF, MV-P4335-BCF, MV-P4350-BCF

Key Feature

Uncooled VOx Micro bolometer with 400×300 resolution

8/15/25/35/50 mm fixed lens optional, Sensitivity ≤40mK

Support temperature monitoring exception alarm, 12V DC/PoE power supply

Temperature detection range: -20 °C to 150 °C (-4°F to 302 °F)

Support human and vehicle detection, IP66

Intelligent analysis: intrusion, single line crossing, double line crossing, loitering, wrong-way, people counting, enter area, leave area



Thermal Image Camera

MV-P6515-TIC, MV-P6525-TIC, MV-P6535-TIC, MV-P6550-TIC

Key Feature

Uncooled VOx Micro bolometer with 640×512 resolution

Sensitivity ≤40mK, 15/25/35/50 mm fixed lens optional

Support temperature monitoring and alarm

Temperature detection range: -40 °C to 150 °C (-40 °F to 302 °F)

Support 3 temperature measurement rule types (spot, line, area)

Intelligent analysis: intrusion, single line crossing, double line crossing, object left, object removed



Dual Vision PTZ Fix Lens

MV-P438-DVPF, MV-P4315-DVPF, MV-P4325-DVPF

Key Feature

Uncooled VOx Micro bolometer with 400×300 resolution

Sensitivity ≤40mK, Reliable temperature-anomaly alarm

25 mm motorized focus thermal lens optional, 17 color palettes

Support 3 temperature measurement rule types (Spot, Line, Area)

Temperature measurement range: -40°C ~ 150°C (-40°F ~ 302°F)

Power off self-locking, strong wind resistance, Anti-frozen



Dual Vision PTZ Motorize Lens

MV-P4325-DVM, MV-P4350-DVM, MV-P4375-DVM, MV-P43100-DVM

Key Feature

- Uncooled VOx thermal sensor with 400×300 resolution
- Sensitivity $\leq 40\text{mK}$, 25/50/75/100 mm motorized lens optional
- Support 3 temperature measurement rule types (Spot, Line, Area)
- Reliable temperature-anomaly alarm, 17 color palettes
- Temperature measurement range: $-40^{\circ}\text{C} \sim 150^{\circ}\text{C}$ ($-40^{\circ}\text{F} \sim 302^{\circ}\text{F}$)
- Power off self-locking, strong wind resistance, Anti-frozen



Bi-spectrum Bullet Body Temperature camera

MV-P217-SBBT



Key Feature

- Uncooled VOx Micro bolometer with 256×192 resolution
- Thermal: 7mm/10mm fixed lens optional, Visible: 8 mm fixed lens
- Support temperature monitoring and exception alarm,
- Support 3 temperature measurement rule types (Spot, Line, Area)
- Support human, vehicle and fire point detection, IR distance up to 55m
- Smart events: intrusion, single line crossing, double line crossing, loitering, wrong way, people counting, enter area, leave area

Body Temperature Detection Network Camera

MV-P213-BTDC

Key Feature

- Uncooled VOx Micro Bolometer with 256×192 Resolution
- One IP Address Two Channels
- NETD $\leq 50\text{mK}$, Thermal: 3.2 mm fixed lens, Visible: 4 mm fixed lens
- Accuracy $\pm 0.3^{\circ}\text{C}$ with Blackbody
- Support Temperature Display and Audio Alarm, Response Time $\leq 30\text{ms}$
- Support 1/1 Audio Input/Output and 2/2 Alarm Input/Output



Bi-spectrum Eyeball Body Temperature camera

MV-P213-SEBT

Key Feature

Uncooled VOx Micro bolometer with 256×192 resolution

Thermal: 3.5 mm fixed lens, Visible: 4 mm fixed lens,

Support human, vehicle, fire point and smoker detection

Intelligent analysis: intrusion, single line crossing, double line crossing, loitering, wrong-way, people counting, enter area, leave area

Support 3 temperature measurement rule types (Spot, Line, Area)

Image processing technology: DVE, 3D DNR, Defog, WDR

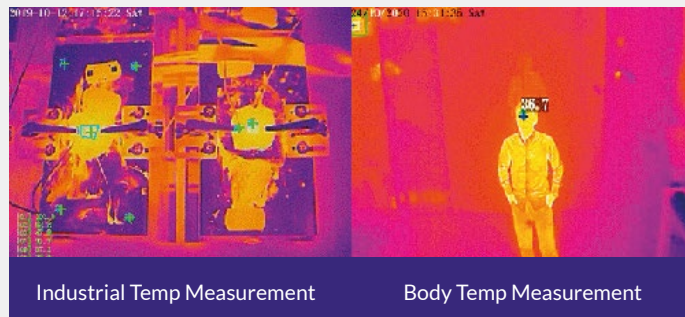
Built-in microphone and speaker, support sound-light alarm
Support I/O alarm, RS485, built-in SD card slot

DC12V/DC24V, PoE power supply



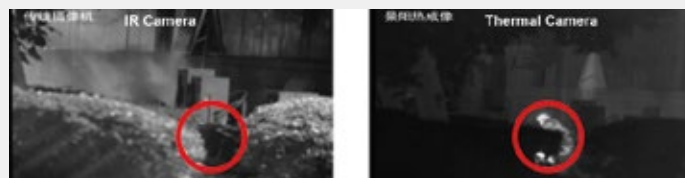
IP Camera Real-time Temperature Measuring

Microview thermal imaging network camera is based on infrared temperature measurement algorithm independently developed and produced by our company, with temperature display and abnormal temperature alarm.



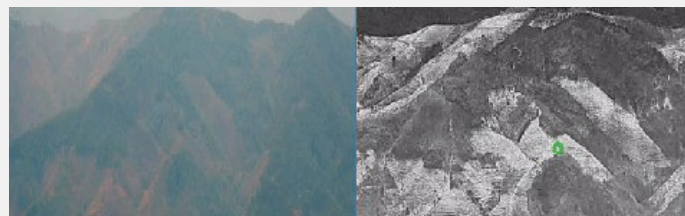
Excellent Adaptability of Network Products

The thermal imaging cameras is not affected by lighting conditions - either extremely low light or even no light at all. And compared with imaging with visible light, thermal cameras are much less impacted by weather conditions such as fog, smog, rain and snow, so that they can work in virtually any environment, anytime.



Fire Detection about Network Products

Thermal imaging products can trigger alarms to prevent fires by detecting abnormal temperatures in the area.



Explosion Proof Series

MICROVIEW Explosion Proof Cameras are Designed for hazardous and challenging environments



Explosion Proof Visible

MV-P285-EPV

Key Feature

5MP(2592×1944) @ 25/30fps, 1/2.8" progressive scan CMOS

30x optical zoom, 16x digital zoom

Support face, human and vehicle detection and capture

Intelligent analysis: intrusion, single line crossing, double line crossing, loitering, wrong way, people counting

WDR, 3D DNR, ICR, HLC, BLC, Defog, IP68

ATEX: II 2 G Ex db IIC T6 Gb, Ex II 2 D Ex tb IIIC T80°C Db



Explosion Proof Visible IR

MV-P285-EPVIR

Key Feature

5MP(2592×1944) @ 25/30fps, 1/2.8" progressive scan CMOS

30x optical zoom, 16x digital zoom

Support face, human and vehicle detection and capture

Intelligent analysis: intrusion, single line crossing, double line crossing, loitering, wrong way, people counting

WDR, 3D DNR, ICR, HLC, BLC, Defog

IR distance up to 100m, IP68



Explosion Proof Positioning Visible

MV-P285-EPPS

Key Feature

5MP(2592×1944) @ 25/30fps, 1/2.8" progressive scan CMOS

30x optical zoom, 16x digital zoom, IR distance up to 200m, IP66

Support face, human and vehicle detection and capture

Intelligent analysis: intrusion, single line crossing, double line crossing, loitering, wrong way, people counting

WDR, 3D DNR, ICR, HLC, BLC, Defog

ATEX: II 2 G Ex db op is IIC T6 Gb, Ex II 2 D Ex tb op is IIIC T80°C Db



Thermal Bullet Explosion-Proof

MV-P285-TBEP

Key Feature

- 2/5MP LPR GCC Version, 1/2.8" Progressive Scan CMOS
- Smart IR II Combining the High Beam and Low Beam to adjust IR intensity
- Advanced Functions i.e HLC, Defog, ROI
- MicroSD/SDHC/SDXC card storage up to 256GB
- Adjustable 3-Axis Bracket, Up to 50m IR Distance
- Smart Stream saves on H.265+ 70%~80% bandwidth that of H.264



Superior Image Quality

- 1080p 50/60 fps image with 1/2.8" progressive CMOS
- Wide Dynamic Range, up to 120 dB, for glare-free images
- True Day/Night for vivid colour images by day and clear black and white images at night
- Excellent low-light performance with 3D noise reduction, saving storage and bandwidth



Flexible Surveillance Solution

- 4.5–135 mm motorized focus/zoom lens with 30x optical zoom to clearly view target area with desired depth
- H.265/H.264/MJPEG codec, triple stream support
- Support for unicast and multicast streaming
- Support for face detection, intrusion tracing
- Security features include signed certificates and data



Hazardous And Challenging Environments

Explosion Proof cameras are ideally suited for oil and gas onshore, offshore, marine, and heavy industrial applications, as well as dusty environments such as those found in the paper and textile industry. The cameras provide extremely crisp video with up to 2 million effective pixels, 30x optical zoom, True Day/Night, and True WDR for continuous surveillance in both hazardous-area and safe-area applications.



Explosion-proof

- Work in harsh conditions
- Built to monitor and control operations in hazardous locations with risks of explosion due to the presence of flammable liquids, gases or dust
- Available in fixed and PTZ, IR optional



Image usability, intelligence, and remote access

Microview explosion-protected cameras deliver a long list of Microview advantages. First and foremost, they provide excellent image quality regardless of lighting conditions or the size and physical characteristics of your monitored areas. And they do it while minimizing bandwidth and storage needs. Analytics transform our cameras into business tools that help you make smart decisions about operations. Plus, you can access footage from Microview cameras from remote locations—ideal in hazardous areas to help minimize risk and reduce unnecessary human exposure.



Anti-corrosion cameras

Corrosion resistant stainless steel case, suitable for corrosive environments, such as coastal zones, shipping areas, chemical plants, etc.



Health and safety, and operational efficiency

You can use explosion-protected cameras to monitor operations and processes with remote visual verification of readings from gauges and sensors across your sites. And our thermal and thermography cameras monitor for overheating of equipment. With an Microview surveillance system keeping a watchful eye on your site, you can improve the safety of employees and minimize unnecessary human exposure to hazardous areas, while also ensuring the correct use of personal protection equipment like hard hats. With Microview explosion-protected cameras, you're able to choose technology that goes far beyond surveillance to provide added value to your business.



Specialty Series

MICROVIEW The 5G Series is outfitted with cutting-edge 5G, IoT, and AI deep learning technology to support external remote surveillance without a wired network but still require device mobility and sensor data collection.



Intelligent People Tracker

MVP2-PCC-R

Key Feature

- Ideal for retail, banking and airport applications
- Accurately measure customer waiting time, Count customers leaving a queue
- Measure queue time at ATMs, ticket collection machines
- Live alerts generated at pre-defined thresholds
- Stationary queue measurement, IP66 rated for Outdoor Application
- Power Consumption 12VDC / 60W Ultra PoE



AIoT 12X enhance Bullet Network Camera

MV-P285-EBC

Key Feature

- 2/5MP LPR GCC Version, 1/2.8" Progressive Scan CMOS
- Smart IR II Combining the High Beam and Low Beam to adjust IR intensity
- Smart Stream saves on H.265+ 70%~80% bandwidth that of H.264
- P-Iris (Giving you a more clear scene with depth of view)
- Defog (Restoring clear images in hazy and foggy weather)
- MicroSD/SDHC/SDXC card storage up to 256G, Up to 65m(3.0~10.5mm/2.7~13.5mm) Up to 100m(7~22mm)



5G AI Motorized ultra Bullet Network Camera

MV-P5282-5GMB, MV-P5285-5GMB, MV-P188-5GMB

Key Feature

- 2/5MP LPR GCC Version, 1/2.8" Progressive Scan CMOS
- Smart IR II Combining the High Beam and Low Beam to adjust IR intensity
- Smart Stream saves on H.265+ 70%~80% bandwidth that of H.264
- HLC (Improving image visibility under strong light sources)
- Defog (Restoring clear images in hazy and foggy weather)
- MicroSD/SDHC/SDXC card storage up to 256GB, Up to 180m IR Distance



5G AIoT 4X/12X ultra Bullet enhance Camera

MV-P282-UBEC, MV-P185-UBEC

Key Feature

- 2/5MP LPR GCC Version, 1/2.8" Progressive Scan CMOS
- Smart IR II Combining the High Beam and Low Beam to adjust IR intensity
- Advanced Functions i.e HLC, Defog, ROI
- MicroSD/SDHC/SDXC card storage up to 256GB
- Adjustable 3-Axis Bracket, Up to 50m IR Distance
- Smart Stream saves on H.265+ 70%~80% bandwidth that of H.264



Box Ultra Bullet

MV-P228-BUB, MV-P220-BUB, MV-P528-BUB, MV-P828-BUB, MV-P818-BUB



Key Feature

- 2/5MP LPR GCC Version, 1/2.8" Progressive Scan CMOS
- Smart IR II Combining the High Beam and Low Beam to adjust IR intensity
- Smart Stream saves on H.265+ 70%~80% bandwidth that of H.264
- P-Iris (Giving you a more clear scene with depth of view)
- Defog (Restoring clear images in hazy and foggy weather)
- MicroSD/SDHC/SDXC card storage up to 256G, Up to 65m(3.0~10.5mm/2.7~13.5mm) Up to 100m(7~22mm)

Pinhole Fisheye

MV-P9-52

Key Feature

- 1/2.8" 2.1M CMOS
- Real-time High Definition Camera, PoE
- Independent ISP
- ROI(Region of Interest)
- Various Web Plug-in
- Smart AVC, Advanced Built in ISP



5G High Bandwidth

5G's spectrum is higher in frequency than the bands used in 4G and earlier generations of cellular networks. Thanks to the high bandwidth and massive network capacity of 5G networks, Microview 5G AIoT Camera is qualified to stream ultra high definition videos up to 4K even 8K, supporting upload and download ultra high resolution footages within few seconds.



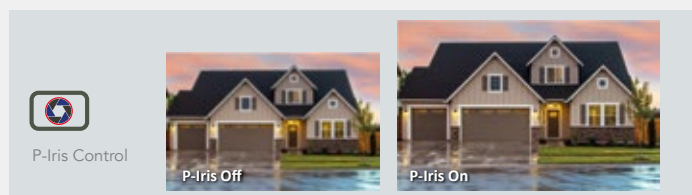
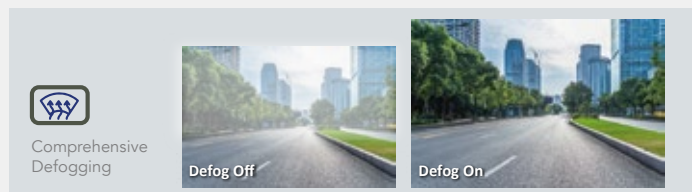
5G Broad Extensibility

Empowered by 5G and AI technology, Microview 5G AIoT Camera has enriched connectivity feature for unparalleled flexibility and scalability. Compared with traditional video surveillance, smart video surveillance expands the scope of security monitoring, bringing new possibilities for industries such as Smart City, Smart Retail, Smart Medical, Smart Transportation and other fields.



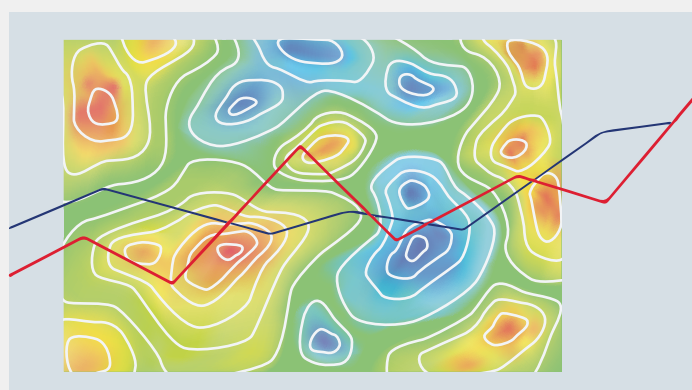
Superior Image Quality

Microview applies high sensitive 1/1.8" sensor whose capacity is approximately twice than that of the conventional ones. Its high sensitivity is designed for capturing saturated and sharp images even in pitch dark environment. Microview 5G AIoT Camera is coupled with the 3 in 1 Super WDR Pro, 100fps high frame rate and 4K video viewing experience that deliver ultra-high-definition images with no latency despite of the high-speed movement.



Advanced Heat Map

With scenario-adaptable and flexible configurations, Microview Advanced Heat Map is embedded into the AI series which can analyze customers' movement to reveal insights for better business management with the intuitive and accurate statistical analysis results in time or space pattern as needed.



NVR Series

MICROVIEW The 5G Series is outfitted with cutting-edge 5G, IoT, and AI deep learning technology to support external remote surveillance without a wired network but still require device mobility and sensor data collection.



NVR LITE 1100 Series

MV-NVR1104CH-1S, MV-NVR1108CH-1S

Key Feature

- 4/8-CH 4-PoE 4K H.265 Lite PoE 1100 Series NVR
- 4/8-CH Input & 4*PoE Ports
- Saves on H.265+ 70%~80% bandwidth that of H.264
- Dual Stream Recording
- HTML5 Streaming Ready
- Auto Backup, Versatile Interfaces



4K 4CH POE 9CH Max. Input 1 x SATA, 2 x USB, 5x RJ-45

MV-NVR1109CH-4P1S

Key Feature

- 1*RJ45 100/1000Mbps, In:80Mbps Out:80Mbps, 1*10TB, 4port PoE
- 2*USB2.0 Interfaces
- 1*SATA HDD(3.5") support
- 115mm(W)X115mm(D)X180mm(H)
- AI Based Video Content Analysis, ANR, PoS Intergration, Auto Backup



NVR Ultra PoE 5100 Series

MV-NVR5108CH-8P2S, MV-NVR5116CH-16P2S

Key Feature

- 8/16 CH 8/16 PoE 4K H.265 Ultra PoE 5100 Series Network Video Recorder
- HDMI & VGA, Saves on H.265+ 70%~80% bandwidth that of H.264
- 4K Video Viewing Experience, Dual Stream Recording
- Flexible Storage Options HDD and NAS storage supported
- ANR (Automatically replenish the recording gap)
- Versatile Interfaces (HDMI, VGA, USB, 8/16 PoE ports etc)



4K 8ch Non POE 2 x SATA, 2 x USB, 5x RJ-45

MV-NVR1108CH-2S

Key Feature

- 1*RJ45 100/1000Mbps,;80Mbps Out:80Mbps,2*2TB (2.5"HDD)
- 2*USB 2.0 Interfaces
- 80mm(W)X80mm(D)X120mm(H)
- AI Based Video Content Analysis, ANR, PoS Intergration, Auto Backup



NVR Enhance PoE 7100 Series

MV-NVR7116CH-16P4S, MV-NVR7132CH-24P4S, MV-NVR7148CH-24P4S



Key Feature

- 16/32/48-CH 16/24-PoE 4K H.265 Enhance PoE 7100 Series NVR
- 16/32/48-CH Input & 16/24*PoE Ports
- Saves on H.265+ 70%~80% bandwidth that of H.264
- HTML5 Streaming Ready
- Video Compression H265+/H.265(HEVC)/H.264+/H.264
- Transcoding

NVR Enhance 7100 Series

MV-NVR7116CH-4S, MV-NVR7132CH-4S

Key Feature

- 16/32-CH 4K H.265 Enhance 7100 Series Network Video Recorder
- Powerful Decoding Capacity
- HDMI & VGA, 4*3.5" HDD, Dual LAN Interfaces
- Video Content Analysis
- ANR (Automatically replenish the recording gap.)
- N+ 1 Hot Spare (backup mechanism.)



NVR Ultra 5100 Series

MV-NVR5108CH-2S, MV-NVR5116CH-2S

Key Feature

- 8/16-CH 4K H.265 Ultra 5100 Series Network Video Recorder
- HDMI & VGA, Saves on H.265+ 70%~80% bandwidth that of H.264
- 4K Video Viewing Experience, Dual Stream Recording
- Flexible Storage Options HDD and NAS storage supported
- ANR (Automatically replenish the recording gap)
- Versatile Interfaces (HDMI, VGA, USB, 8/16 PoE etc)

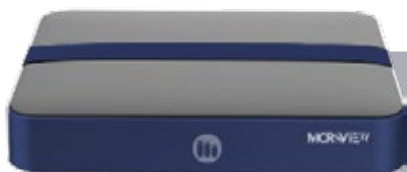


NVR Lite PoE 1100 Series

MV-NVR1104CH-1S, MV-NVR1108CH-1S

Key Feature

- 4/8 CH 4 PoE 4K H.265 Lite 1100 Series Network Video Recorder
- 4/8-CH Input & 4*PoE Ports
- Saves on H.265+ 70%~80% bandwidth that of H.264
- Dual Stream Recording
- HTML5 Streaming Ready
- Auto Backup, Versatile Interfaces



NVR Enhance 8100 Series

MV-NVR81032CH-8S, MV-NVR8164CH-8S

Key Feature

- 32/64-CH 4K H.265 Enhance 8100 Series NVR
- Powerful Decoding Capacity
- HDMI & VGA, 8*3.5" HDD
- Dual LAN Interfaces, Video Content Analysis
- ANR (Automatically replenish the recording gap)
- N+ 1 Hot Spare (backup mechanism)



4K 64ch Non POE 8/16 x SATA, 2 x USB

MV-NVR064C8B, MV-NVR064C16B

Key Feature

- Intel Processor
- Max 64 IP Camera Inputs
- Max 384 Mbps Incoming Bandwidth
- Up to 12MP Resolution for Preview and Playback Supports RAID 0/1/5/6/10
- SCSI and Mini SAS for Expanded Storage Space
- Smart Tracking and Intelligent Video



CORP L40

CORPORATE SERIES

Key Feature

- Intel® Xeon E-2146G 3.5GHz, 6C/12T Processor
- VMS/OS Disk 2 x 240GB M.2 SSD SATA, Raid 1
- 16GB 2666MT/s DDR4 ECC UDIMM Memory
- Centralized Security Monitoring and Control
- HTML5 Streaming Ready
- Auto Backup, Versatile Interfaces



CORP L65-10G

CORPORATE SERIES

Key Feature

- Intel® Xeon Silver 4208 2.1GHz, 8C/16T Processor
- VMS/OS Disk 2 x 240GB M.2 SSD SATA, Raid 1
- 16GB RDIMM, 2666MT/ Memory
- Centralized Security Monitoring and Control
- HTML5 Streaming Ready
- Auto Backup, Versatile Interfaces



CORP L90

CORPORATE SERIES

Key Feature

- Intel® Xeon Silver 4210 2.2Ghz, 10C/20T Processor
- VMS/OS Disk 2 x 240GB M.2 SSD SATA, Raid 1
- 16GB RDIMM, 2666MT/s Memory
- Centralized Security Monitoring and Control
- 14 x 3.5" hot plug hard drives with a total storage capacity of 224TB.
- Auto Backup, Versatile Interfaces



CORP FR22

CORPORATE SERIES

Key Feature

- 2 x Intel® Xeon Gold 6252 2.1G, 24C/48T Processor
- VMS/OS Disk 2 x 480GB SSD SATA, Raid 1
- 16GB 2666MT/s DDR4 ECC UDIMM Memory
- Centralized Security Monitoring and Control
- HTML5 Streaming Ready
- Auto Backup, Versatile Interfaces



CORP VA112/FR14

CORPORATE SERIES

Key Feature

- 2 x Intel® Xeon Silver 4216 2.1G, 16C/32T Processor
- VMS/OS Disk 2 x 480GB SSD SATA, Raid 1
- 2 x 16GB Memory, single-socket 2U rack appliance
- Perspective VMS Integration
- Designed to meet enterprise needs
- Auto Backup, Versatile Interfaces



CORP L115

CORPORATE SERIES

Key Feature

- Intel® Xeon Silver 4214 2.2Ghz, 12C/24T Processor
- VMS/OS Disk 2 x 240GB M.2 SSD SATA, Raid 1
- 2 x16GB RDIMM, 2666MT/s Memory
- Centralized Security Monitoring and Control
- 14 x 3.5" hot plug hard drives with a total storage capacity of 224TB.
- Auto Backup, Versatile Interfaces



CORP VA48/FR3

CORPORATE SERIES

Key Feature

- Intel® Xeon E-2288G 3.7G, 8C/16T Processor
- VMS/OS Disk 2 x 256GB SSD SATA, Raid 1
- 2 x 8GB Memory, NVIDIA Quadro RTX4000, 8GB
- Perspective VMS Integration
- HTML5 Streaming Ready
- Auto Backup, Versatile Interfaces, General video analytics; License Plate Recognition (LPR); Face Recognition



CORP L200

CORPORATE SERIES

Key Feature

- 2 x Intel® Xeon Silver 4214 2.2Ghz, 12C/24T Processor
- VMS/OS Disk 2 x 240GB M.2 SSD SATA, Raid 1
- 2 x16GB RDIMM, 2666MT/s Memory, single-socket 2U rack appliance
- Centralized Security Monitoring and Control
- Designed to meet enterprise needs
- Auto Backup, Versatile Interfaces



Protect People With Advanced Analytic System!



Video Management Software (Enterprise)





The Enterprise version is the package that comprises all of the features available in the Microview System, offering total management of unlimited cameras and alarm devices, and is ideal for any company that wants total control of its security project, guaranteeing high performance, reliability and scalability.

The Enterprise was developed for the purpose of preserving the clients' investments, maintaining all of the characteristics of the previous versions allied with new and exclusive features, as well as provide greater scalability for future expansions, with no limitation of software features.

It is recommended for medium and large-scale users and for those who need a surveillance system with unlimited tools and functions and of high technology, capable of including solutions for alarms, access control and automation.

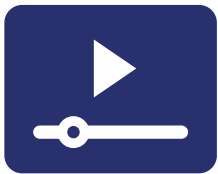
In addition to the functions available in the other versions of the software, such as: Web Server, PTS by Joystick, advanced PTZ and PTZ by priority, synoptic maps, viewing of cameras by cell phone, etc., Microview Enterprise is equipped with the possibility of integration of an unlimited number of alarm and automation modules, and unlimited number of cameras, IP filters, server status reports and even automated Backup of the net's recording directory.





LIVE MONITORING

| | |
|---|------------------------------------|
| Number of cameras simultaneously | Unlimited |
| Supports creation of different positionings of cameras | Yes |
| Has automatic view dimensioning | Yes |
| Supports Multi-Monitor | Yes (Eight) |
| Allows live visualization of images of various servers on the same screen | Yes |
| Has control for filters and effects on the image | Yes |
| Has Image Relay Feature* | Yes |
| Supports live Detection of Movement | Yes |
| Has tool for camera short-cut | Yes |
| Has screenshot tool | Yes |
| View styles for live monitoring | 7 Native with support for creation |
| Has view for image sequencing | Yes |
| Supports bilinear redimensioning | Yes |
| Permits execution of emergency local recording by monitoring client | Yes |
| Media profile changing | Yes |
| PTZ lock by priority | Yes |
| Tool has virtual keyboard | Yes |
| Enables the creation of presets Customer Monitoring | Yes |
| Enables automatic updating of Customer Monitoring | Yes |
| Has resource Virtual Array | Yes |
| Has support Virtual PTZ in live view | Yes |
| Allows creation of synoptic map | Yes |
| It features a public mosaic resource. | Yes |
| It features a limit for simultaneous camera accesses. | Yes |
| It features an object filter on the surveillance client. | Yes |
| It allows the dynamic update of mosaics on the surveillance client. | Yes |



VIDEO RECORDING

| | |
|--|------------------------|
| Supports recording by detection of movement | Yes |
| Recording by movement allows definition of various areas sensitive to movement | Yes |
| Supports recording by events | Yes |
| Supports buffer for pre/post alarm | Yes (Up to 60 seconds) |
| Has system of digital certificate | Yes |
| Supports filing of recordings | Yes |
| High-performance data bank | Yes |
| Has automatic disk management system | Yes |
| Had disk allotment for the automatic disk management system | Yes |
| Permits image recording in file servers (by network) | Yes |
| Limit or recordings per day | No limit |
| Has tool for test of detection of movement | Yes |
| It enables selecting unlimited areas sensitive to motion | Yes |
| It enables Failover and Failback configuration | Yes |
| It enables increasing the frame rate whenever motion is detected on the images | Yes |
| It works with recordings in the JPEG, MPEG4, H.263 and H.264 formats. | Yes |
| It features reports with originality codes. | Yes |
| It enables the capture, recording, and playback of computer screens | Yes |
| It enables audio recording on the formats: PCM, G.711, G.726 and AAC. | Yes |
| It enables recording of images generated by 360 degree panamorphic lenses. | Yes |



EVENTS SUPPORT

| | |
|--|-------------------|
| Supports alarm input and output | Yes |
| Generates an event upon detection of movement | Yes |
| Generates an event upon recording failure | Yes |
| Generates an event if a camera is out of order | Yes |
| Has manual events | Yes |
| Has timer events | Yes |
| Supports creation of diverse contacts and groups for receiving e-mail and SMS | Yes |
| Sends e-mail or SMS in case of event | Yes |
| Opens popup with camera images in case of event | Yes |
| Sounds alarm in case of an event | Yes |
| Sends an instantaneous message to operator in case of event | Yes |
| Positions PTZ cameras in case of event | Yes |
| Activates alarm outputs in case of event | Yes |
| Sheduled Events | Yes |
| It allows Event reports to be exported. | Yes |
| Supports Global Events | Yes (Unlimited) |
| Audio level detection | Yes |
| Complete system of alarms and events | Yes |
| It enables Event scheduling | Yes |
| It enables the triggering of a camera alarm to start recording and/or image transmission | Yes |
| It features directed alarm events | Yes |
| It enables motion detection processed directly by the cameras | Yes |



WEB SERVER

| | |
|---|-----|
| Has built-in web server | Yes |
| It enables the configuration of a standard directory for media and photo export in the surveillance | Yes |



VIDEO ANALYTICS

| | |
|---|------------------------|
| Supports video analysis features | Yes (By License Packs) |
| Native support for bundled analytics on cameras. | Yes |
| It supports video analytics embedded in cameras via HTTP notification | Yes |



CAR PLATES RECOGNITION - LPR

| | |
|--|-----|
| Supports recognition module license plates | Yes |
| It features an Edge licensing system for LPR | Yes |
| It features alarm action for unregistered license plates | Yes |



MENA Office

+971 4 556 1557

mena@microviewsecurity.com

Boulevard Plaza Tower One, Level 3,
Downtown Dubai, United Arab Emirates

UK Office

+44-20-37695558

uk@microviewsecurity.com

86-90 Paul Street, London, England,
United Kingdom, EC2A 4NE

USA Office

+1-877-677-4040

info@microviewsecurity.com

Williams Tower, 41st Floor, 2800 Post
Oak Boulevard, Houston, TX 77056, USA

