



[www.mifab.com](http://www.mifab.com)

**AD - 2012 - CAD**

Go to  
[www.mifab.com](http://www.mifab.com)  
for the most  
current product  
specification  
sheets.



**ACCESS DOORS**



## TABLE OF CONTENTS

	DISCOUNT		DISCOUNT
<b>UA</b> - Universal .....	1	<b>MPFR-DW</b> - Insulated, Fire Rated with	
<b>MDW</b> - Drywall Bead.....	2	Drywall Bead.....	8
<b>CAD</b> - 5/8" Recess for Drywall .....	2	<b>MI-SAD</b> - Medium Security.....	9
<b>CAD-DW</b> - 5/8" Recess for Drywall with		<b>MI-SADH</b> - High Security.....	9
Drywall Bead.....	3	<b>MI-FVP</b> - Flush Valve Panel .....	10
<b>CAD-PL</b> - 5/8" Recess for Drywall with		<b>MI-SF</b> - Surface .....	10
Plaster Lathe .....	3	<b>MI-VB, MI-VB-SM</b> - Valve Boxes .....	11
<b>CAD-FL</b> - 5/8" Recess in Frame, Door Flush		<b>PA</b> - Plastic.....	12
with Frame .....	4	<b>FHA, FHG</b> - Floor Access .....	12
<b>CAD-FL-PL</b> - 5/8" Recess in Frame, Door		<b>RHA, RHG</b> - Roof Hatches .....	13
Flush with Frame.....	4	<b>Locks and Latches</b> - Illustrated Locks	
<b>CAD-FR</b> - 1 1/2" Recess for Drywall .....	5	Available .....	13
<b>UD</b> - Duct Access.....	5	<b>WID</b> - Exterior Access .....	14
<b>MPFR</b> - Insulated, Fire Rated .....	6	<b>EA</b> - Economy Access .....	15
<b>MFRU</b> - Uninsulated, Fire Rated.....	7	<b>Cross Reference</b> .....	16

## TERMS AND CONDITIONS

**FREIGHT ALLOWANCE:** Ex Works, MIFAB's Chicago, Illinois Factory and Distribution Center or Manufacturer's Representative's warehouse with full motor freight allowed on shipments of \$1,500.00 Net or more within Canada. MIFAB reserves the right to choose the carrier and route of shipment. There is no allowance for United Parcel Service, Federal Express, Purolator or shipment by air service.

**QUOTATION TERMS:** List Price and discount protected for 30 days from bid due date. Orders received within this period must be released for shipment within 90 days from date of purchase order, otherwise, prices will be those that are in effect at the time of shipment.

**PAYMENT TERMS:** 2% cash discount allowed to approved accounts if paid on or before the 10th of the following month. Invoices not paid 30 days after invoice date are subject to a monthly 1 - 1/2% service charge. Minimum invoice amount - \$50.00 Net. Confirmed irrevocable letter of credit or payment in advance required for accounts without an established credit line.

**RETURNED GOODS RESTOCKING CHARGE:** Standard product may be returned within a one year period only with written permission of Seller. All products in catalog are not considered Standard. Standard product to be determined by Seller. Returned goods are subject to a 25% restocking charge, plus cost of reconditioning, if necessary, to make material saleable. Transportation charges must be paid by Buyer. Credit allowances will be in the form of merchandise credit only - not cash credit which must be used within 12 months of the date of issue. The value of a return must total at least \$100.00 to qualify for credit allowance. No credit will be allowed for discontinued or made to order items.

**LIMITED WARRANTY:** MIFAB warrants each product against defects in material and workmanship for a period of one year from the date of original shipment. In the event of such defects within the warranty period, MIFAB will, at its option, replace or recondition the product without charge. This shall constitute the exclusive remedy for breach of warranty, and MIFAB shall not be responsible for any incidental or consequential damages, including, without limitation, damages or other costs resulting from labor charges, delays, vandalism, negligence, fouling caused by foreign material, damage from adverse water conditions, chemicals, or any other circumstances over which MIFAB has no control. This warranty shall be invalidated by any abuse, misuse, misapplication or improper installation of the product.

**MIFAB MAKES NO OTHER WARRANTIES EXPRESSED OR IMPLIED AS PROVIDED IN THIS LIMITED WARRANTY.**

**ILLUSTRATIONS OR TYPICAL INSTALLATIONS:** The typical installations for various products in each product section are intended to illustrate the products and their options. Under no circumstances are they to be construed as recommended installation procedures. Consult local codes and project specifications for proper installation instructions.

**ALL SALES SUBJECT TO MIFAB's TERMS AND WARRANTIES.**

**NOTE:** Prices and terms are subject to change without notice and supersede all previous quotations. The right is reserved to change or modify product design or construction without prior notice and without incurring any obligation to make similar changes and modifications to product previously or subsequently sold. Contact MIFAB for any clarification.

CONTENTS © MIFAB INC. Copyright 2012

Design and dimensions are subject to modification. Prices do not include applicable taxes. Visit [www.mifab.com](http://www.mifab.com) for the most recent product information.

MIFAB, Inc.

[sales@mifab.com](mailto:sales@mifab.com)

Toll Free 1-800-387-3880

Fax 1-773-341-3049

[www.mifab.com](http://www.mifab.com)

All sales subject to MIFAB's Terms and Warranties. Please refer to inside front cover.

## SERIES UA UNIVERSAL ACCESS DOOR



### DESCRIPTION

The MIFAB® UA is a multi-purpose access door. It is designed for flush installation into drywall, block or tile, walls and ceilings. The door features rounded safety corners, concealed hinge, flush with frame fit, a unique white finish, and a 3/8" turn back in the door panel for extra rigidity and safety.

### SPECIFICATIONS

**Material:** UA Series is 16 gage satin coat steel door and 16 gage satin coat steel frame. The UASS Stainless Steel Series is 16 gage #304 stainless steel door and frame. Aluminum doors are available as an option up to the 24" x 24" (610 x 610) size. The door and frame is 16 gage, Type 5052-32 aluminum.

**Finish:** Satin coat steel doors have a primed white finish. Stainless steel doors have a #4 brush satin finish.

**Door:** Flush to frame. Turned back around edges for extra rigidity.

**Frame:** The frame has pre-punched mounting holes for simple installation.

**Hinge:** Concealed pivot pins.

**Latch:** Standard – Flush mounted, screwdriver operated cam. Optional – Allen key, cylinder key, paddle latch, or vandal resistant latch. All of MIFAB's cylinder key locks are keyed alike.

**Packaging:** Individual pack.

### UA OPTIONAL VARIATIONS

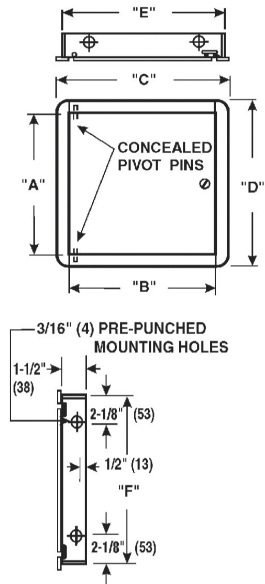
SUFFIX	DESCRIPTION	LIST PRICE, EACH
-A	Allen key lock	\$17.00
-AL	Aluminum material	No Add
-C	Cylinder key lock	\$20.00
-PL	Paddle latch	\$62.50
-VP	Vandal resistant	\$62.50
-WR	Water resistant	\$100.00

"B" x "A"	WALL OPENING	SHIP WEIGHT (Lbs.)	LATCHES	MILD STEEL MODEL #	LIST PRICE MILD STEEL	STAINLESS STEEL MODEL #	LIST PRICE STAINLESS
6" x 6"	6-3/8" x 6-3/8"	1.9	1	UA0606	\$18.00	UASS0606	\$81.00
8" x 8"	6-3/8" x 8-3/8"	2.8	1	UA0808	\$18.00	UASS0808	\$53.00
8" x 12"	8-3/8" x 12-3/8"	3.8	1	UA0812	\$34.00	UASS0812	\$115.00
10" x 10"	10-3/8" x 10-3/8"	3.8	1	UA1010	\$24.00	UASS1010	\$104.50
12" x 12"	12-3/8" x 12-3/8"	5.0	1	UA1212	\$22.50	UASS1212	\$108.00
12" x 16"	12-3/8" x 16-3/8"	6.4	1	UA1216	\$45.75	UASS1216	\$148.00
12" x 18"	12-3/8" x 18-3/8"	7.1	1	UA1218	\$49.00	UASS1218	\$162.00
12" x 24"	12-3/8" x 24-3/8"	9.3	2	UA1224	\$56.75	UASS1224	\$175.00
14" x 14"	14-3/8" x 14-3/8"	6.4	1	UA1414	\$36.75	UASS1414	\$197.00
14" x 20"	14-3/8" x 20-3/8"	9.0	2	UA1420	\$38.50	UASS1420	\$199.50
14" x 24"	14-3/8" x 24-3/8"	12.0	3	UA1424	\$65.75	UASS1424	\$224.00
15" x 15"	15-3/8" x 15-3/8"	7.1	1	UA1515	\$65.75	UASS1515	\$210.50
16" x 16"	16-3/8" x 16-3/8"	7.9	1	UA1616	\$38.50	UASS1616	\$199.50
16" x 20"	16-3/8" x 20-3/8"	9.7	2	UA1620	\$59.00	UASS1620	\$223.00
16" x 24"	16-3/8" x 24-3/8"	11.4	2	UA1624	\$65.75	UASS1624	\$224.00
18" x 18"	18-3/8" x 18-3/8"	9.8	3	UA1818	\$52.00	UASS1818	\$227.00
18" x 24"	18-3/8" x 24-3/8"	12.7	5	UA1824	\$70.50	UASS1824	\$280.00
18" x 36"	18-3/8" x 36-3/8"	18.5	5	UA1836	\$106.00	UASS1836	\$318.00
20" x 20"	20-3/8" x 20-3/8"	11.7	3	UA2020	\$70.00	UASS2020	\$280.00
20" x 24"	20-3/8" x 24-3/8"	13.8	3	UA2024	\$75.00	UASS2024	\$295.00
20" x 30"	20-3/8" x 30-3/8"	16.9	5	UA2030	\$101.50	UASS2030	\$315.50
22" x 22"	22-3/8" x 22-3/8"	13.7	3	UA2222	\$81.00	UASS2222	\$315.50
22" x 30"	22-3/8" x 30-3/8"	18.2	5	UA2230	\$111.50	UASS2230	\$333.50
24" x 24"	24-3/8" x 24-3/8"	15.9	3	UA2424	\$70.00	UASS2424	\$315.50
24" x 30"	24-3/8" x 30-3/8"	19.6	5	UA2430	\$115.50	UASS2430	\$354.50
24" x 36"	24-3/8" x 36-3/8"	23.2	6	UA2436	\$129.00	UASS2436	\$384.50
24" x 48"	24-3/8" x 48-3/8"	28.0	7	UA2448	\$133.50	UASS2448	\$414.50
30" x 30"	30-3/8" x 30-3/8"	23.5	7	UA3030	\$129.00	UASS3030	\$384.50
32" x 32"	32-3/8" x 32-3/8"	26.4	5	UA3232	\$148.50	UASS3232	\$446.00
36" x 36"	36-3/8" x 36-3/8"	32.7	8	UA3636	\$165.00	UASS3636	\$493.00
36" x 48"	36-3/8" x 48-3/8"	43.0	5	UA3648	\$294.50	UASS3648	\$884.00
48" x 48"	48-3/8" x 48-3/8"	46.0	5	UA4848	\$350.00	UASS4848	\$975.00

A-B Door Size

C-D Overall Dimensions - Door Size - Plus 2 1/8"

E-F Wall Opening - Door Size - Plus 3/8"



**Note:** The hinge is always furnished on the "A" or height (longer) dimension, unless otherwise specified.

Design and dimensions are subject to modification. Prices do not include applicable taxes. Visit [www.mifab.com](http://www.mifab.com) for the most recent product information.

MIFAB, Inc.

[sales@mifab.com](mailto:sales@mifab.com)

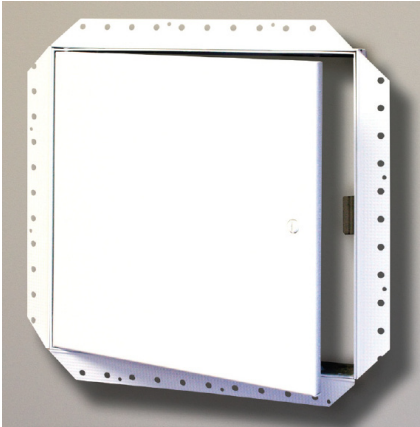
Toll Free 1-800-387-3880

Fax 1-773-341-3049

[www.mifab.com](http://www.mifab.com)

All sales subject to MIFAB's Terms and Warranties. Please refer to inside front cover.

## SERIES MDW DRYWALL BEAD ACCESS DOOR



### DESCRIPTION

The MIFAB® MDW access door is designed for installation after the drywall has been applied and when a concealed outer flange is required. The outer frame has a galvanized drywall taping bead. Drywall cement can be applied over the beading at the same time as the wallboard joints and corners. Only the door is visible. It has a unique white finish.

### SPECIFICATIONS

**Material:** MDW Series is 16 gage satin coat steel door and 16 gage satin coat steel frame. The MDWSS Stainless Steel Series is 16 gage #304 stainless steel door and frame.

**Finish:** Satin coat steel doors have a primed white finish. Stainless steel doors have a #4 brush satin finish.

**Door:** Flush to frame. Turned back around edges for extra rigidity.

**Frame:** Drywall taping bead on all sides.

**Hinge:** Concealed pivot pins.

**Latch:** Standard – Flush mounted, screwdriver operated cam. Optional – Allen key, cylinder key, paddle latch, or vandal resistant latch. All of MIFAB's cylinder key locks are keyed alike.

**Packaging:** Individual pack.

MDW OPTIONAL VARIATIONS		
SUFFIX	DESCRIPTION	LIST PRICE, EACH
-A	Allen key lock	\$17.00
-C	Cylinder key lock	\$20.00
-PL	Paddle latch	\$62.50
-VP	Vandal resistant	\$62.50
-WR	Water resistant	\$100.00

**NOTE:** The hinge is always furnished on the "A" or height (longer) dimension, unless otherwise specified.

"B" x "A"	WALL OPENING	SHIP WEIGHT (Lbs.)	LATCHES	MILD STEEL MODEL #	LIST PRICE MILD STEEL	STAINLESS STEEL MODEL #	LIST PRICE STAINLESS
8" x 8"	8-3/8" x 8-3/8"	3.5	1	MDW0808	\$92.00	MDWSS0808	\$275.00
10" x 10"	10-3/8" x 10-3/8"	4.5	1	MDW1010	\$97.00	MDWSS1010	\$293.00
12" x 12"	12-3/8" x 12-3/8"	6.0	1	MDW1212	\$104.00	MDWSS1212	\$311.00
14" x 14"	14-3/8" x 14-3/8"	7.0	1	MDW1414	\$112.00	MDWSS1414	\$338.00
16" x 16"	16-3/8" x 16-3/8"	8.0	1	MDW1616	\$124.00	MDWSS1616	\$371.00
18" x 18"	18-3/8" x 18-3/8"	12.0	3	MDW1818	\$131.00	MDWSS1818	\$394.00
22" x 22"	22-3/8" x 22-3/8"	14.0	3	MDW2222	\$153.00	MDWSS2222	\$473.00
24" x 24"	24-3/8" x 24-3/8"	17.5	3	MDW2424	\$173.00	MDWSS2424	\$518.00
24" x 36"	24-3/8" x 36-3/8"	21.0	5	MDW2436	\$193.00	MDWSS2436	\$550.00
30" x 30"	30-3/8" x 30-3/8"	22.0	5	MDW3030	\$193.00	MDWSS3030	\$550.00
36" x 36"	36-3/8" x 36-3/8"	32.0	5	MDW3636	\$230.00	MDWSS3636	\$625.00

## SERIES CAD CEILING OR WALL ACCESS DOOR



### DESCRIPTION

The MIFAB® CAD recessed access door is designed for use in acoustical, drywall or tiled surfaces. The door panel is recessed 5/8" (15) to allow the insertion of various types of material.

### SPECIFICATIONS

**Material:** CAD Series is 16 gage satin coat steel door and 16 gage satin coat steel frame. The CADSS Stainless Steel Series is 16 gage #304 stainless steel door and frame.

**Finish:** Satin coat steel doors have a primed white finish. Stainless steel doors have a #4 brush satin finish.

**Door:** Recessed 5/8" (15) door pan to accept tile, drywall or other finishing materials.

**Frame:** Flush to surface.

**Hinge:** Concealed pivot pins.

**Latch:** Standard – Flush mounted, screwdriver operated cam. Optional – Allen key, cylinder key, or vandal resistant latch. All of MIFAB's cylinder key locks are keyed alike.

**Packaging:** Individual pack.

CAD OPTIONAL VARIATIONS		
SUFFIX	DESCRIPTION	LIST PRICE, EACH
-A	Allen key lock	\$17.00
-C	Cylinder key lock	\$20.00
-VP	Vandal resistant	\$62.50

**NOTE:** The hinge is always furnished on the "A" or height (longer) dimension, unless otherwise specified.

"B" x "A"	WALL OPENING	SHIP WEIGHT (Lbs.)	LATCHES	MILD STEEL MODEL #	LIST PRICE MILD STEEL	STAINLESS STEEL MODEL #	LIST PRICE STAINLESS
8" x 8"	8-3/16" x 8-3/16"	4.5	1	CAD0808	\$71.00	CADSS0808	\$212.00
12" x 12"	12-3/16" x 12-3/16"	7.0	1	CAD1212	\$82.00	CADSS1212	\$247.00
12" x 24"	12-3/16" x 24-3/16"	12.0	2	CAD1224	\$107.00	CADSS1224	\$323.00
14" x 14"	14-3/16" x 14-3/16"	9.0	2	CAD1414	\$91.00	CADSS1414	\$274.00
16" x 16"	16-3/16" x 16-3/16"	10.5	2	CAD1616	\$103.00	CADSS1616	\$308.00
18" x 18"	18-3/16" x 18-3/16"	12.0	3	CAD1818	\$111.00	CADSS1818	\$331.00
24" x 24"	24-3/16" x 24-3/16"	18.5	4	CAD2424	\$153.00	CADSS2424	\$454.00
24" x 36"	24-3/16" x 36-3/16"	22.0	5	CAD2436	\$199.00	CADSS2436	\$598.00

Design and dimensions are subject to modification. Prices do not include applicable taxes. Visit [www.mifab.com](http://www.mifab.com) for the most recent product information.

MIFAB, Inc.

[sales@mifab.com](mailto:sales@mifab.com)

Toll Free 1-800-387-3880

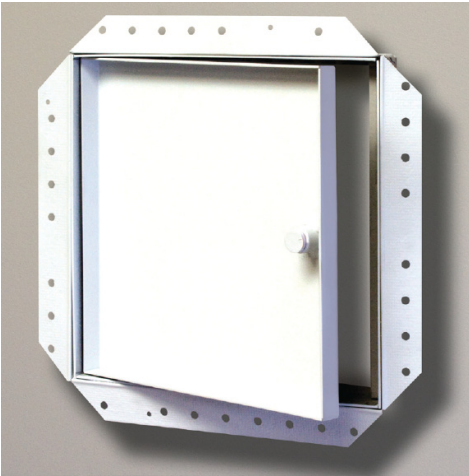
Fax 1-773-341-3049

[www.mifab.com](http://www.mifab.com)

All sales subject to MIFAB's Terms and Warranties. Please refer to inside front cover.



## SERIES CAD-DW CEILING OR WALL ACCESS DOOR WITH DRYWALL BEAD



### DESCRIPTION

The MIFAB® CAD-DW recessed access door is designed for use in acoustical, drywall or tiled surfaces. The door panel is recessed 5/8" (15) to allow the insertion of various types of material. It has a unique white finish. The outer frame has a galvanized drywall taping bead. Drywall cement can be applied over the beading at the same time as the wallboard joints and corners. It has a unique white finish.

### SPECIFICATIONS

**Material:** CAD-DW Series is 16 gage satin coat steel door and 16 gage satin coat steel frame. The CAD-DWSS is 16 gage #304 stainless steel door and frame.

**Finish:** Satin coat steel doors have a primed white finish. Stainless steel doors have a #4 brush satin finish.

**Door:** Recessed 5/8" (15) door pan to accept tile, drywall or other finishing materials.

**Frame:** Drywall corner bead on all sides.

**Hinge:** Concealed pivot pins.

**Latch:** Standard – Flush mounted, screwdriver operated cam. Optional – Allen key, cylinder key, or vandal resistant latch. All of MIFAB's cylinder key locks are keyed alike.

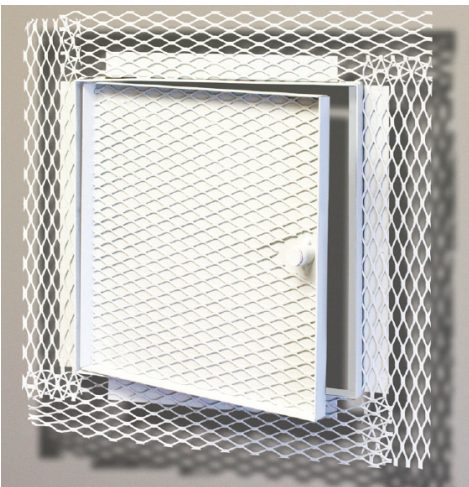
**Packaging:** Individual pack.

CAD-DW OPTIONAL VARIATIONS		
SUFFIX	DESCRIPTION	LIST PRICE, EACH
-A	Allen key lock	\$17.00
-C	Cylinder key lock	\$20.00
-VP	Vandal resistant	\$62.50
-WR	Water resistant	\$100.00

**NOTE:** The hinge is always furnished on the "A" or height (longer) dimension, unless otherwise specified.

"B" x "A"	WALL OPENING	SHIP WEIGHT (Lbs.)	LATCHES	MILD STEEL MODEL #	LIST PRICE MILD STEEL	STAINLESS STEEL MODEL #	LIST PRICE STAINLESS
8" x 8"	8-3/16" x 8-3/16"	5.0	1	CAD-DW0808	\$103.00	CAD-DWSS0808	\$308.00
12" x 12"	12-3/16" x 12-3/16"	7.5	1	CAD-DW1212	\$115.00	CAD-DWSS1212	\$344.00
12" x 24"	12-3/16" x 24-3/16"	13.0	2	CAD-DW1224	\$140.00	CAD-DWSS1224	\$420.00
14" x 14"	14-3/16" x 14-3/16"	9.5	2	CAD-DW1414	\$124.00	CAD-DWSS1414	\$371.00
16" x 16"	16-3/16" x 16-3/16"	11.5	2	CAD-DW1616	\$135.00	CAD-DWSS1616	\$405.00
18" x 18"	18-3/16" x 18-3/16"	13.0	3	CAD-DW1818	\$143.00	CAD-DWSS1818	\$426.00
24" x 24"	24-3/16" x 24-3/16"	19.5	4	CAD-DW2424	\$184.00	CAD-DWSS2424	\$551.00
24" x 36"	24-3/16" x 36-3/16"	23.0	5	CAD-DW2436	\$232.00	CAD-DWSS2436	\$695.00

## SERIES CAD-PL CEILING OR WALL ACCESS DOOR, PLASTER FINISH



### DESCRIPTION

The MIFAB® CAD-PL recessed access door is designed for use in acoustic plaster walls and ceilings. The door panel is recessed 5/8" (15) and is lined with a self-furring metal lath to allow the insertion of plaster within the door panel. A 2 3/4" (70) wide metal lath extends from the perimeter of the frame. Only the thickness of the door and frame edges are exposed. It has a unique white finish.

### SPECIFICATIONS

**Material:** CAD-PL Series is 16 gage satin coat steel door and 16 gage satin coat steel frame. The CAD-PLSS Stainless Steel Series is 16 gage #304 stainless steel door and frame.

**Finish:** Satin coat steel doors have a primed white finish. Stainless steel doors have a #4 brush satin finish.

**Door:** Recessed 5/8" (15) door pan with self-furring metal lath to accept plaster.

**Frame:** Mounting flange is 1 1/8" (28) wide and recessed 5/8" (15) from the door and lined with a 2 3/4" (70) wide self-furring metal lath.

**Hinge:** Concealed pivot pins.

**Latch:** Standard - Flush mounted, screwdriver operated cam. Optional – Allen key, cylinder key, or vandal resistant latch. All of MIFAB's cylinder key lock are keyed alike.

**Packaging:** Individual pack.

CAD-PL OPTIONAL VARIATIONS		
SUFFIX	DESCRIPTION	LIST PRICE, EACH
-A	Allen key lock	\$17.00
-C	Cylinder key lock	\$20.00
-VP	Vandal resistant	\$62.50

**NOTE:** The hinge is always furnished on the "A" or height (longer) dimension, unless otherwise specified.

"B" x "A"	WALL OPENING	SHIP WEIGHT (Lbs.)	LATCHES	MILD STEEL MODEL #	LIST PRICE MILD STEEL	STAINLESS STEEL MODEL #	LIST PRICE STAINLESS
12" x 12"	12-3/16" x 12-3/16"	8.5	1	CAD-PL1212	\$172.00	CAD-PLSS1212	\$513.00
12" x 24"	12-3/16" x 24-3/16"	15.0	2	CAD-PL1224	\$205.00	CAD-PLSS1224	\$613.00
18" x 18"	18-3/16" x 18-3/16"	15.0	2	CAD-PL1818	\$205.00	CAD-PLSS1818	\$613.00
24" x 24"	24-3/16" x 24-3/16"	23.0	4	CAD-PL2424	\$255.00	CAD-PLSS2424	\$764.00
24" x 36"	24-3/16" x 36-3/16"	27.0	5	CAD-PL2436	\$292.00	CAD-PLSS2436	\$874.00

## SERIES CAD-FL CEILING OR WALL ACCESS DOOR, FLUSH DOOR WITH FRAME



### DESCRIPTION

The MIFAB® CAD-FL access door is designed for flush installation in drywall or plaster surfaces. The door panel is flush with the frame. When installed flush with the wall or ceiling, only the door panel is exposed. A mounting bracket is recessed 5/8" (15) from the door. It has a unique white finish.

### SPECIFICATIONS

**Material:** CAD-FL Series is a 16 gage satin coat door and a 16 gage satin coat frame. The CAD-FLSS Stainless Steel Series is 16 gage #304 stainless steel door and frame.

**Finish:** Satin coat steel doors have a primed white finish. Stainless steel doors have a #4 brush satin finish.

**Door:** Flush to frame. Turned back around edges for extra rigidity.

**Frame:** Flush to surface. Mounting flange is 1 1/8" (28) wide and recessed 5/8" (15) from the door.

**Hinge:** Concealed pivot pins.

**Latch:** Standard – Flush mounted, screwdriver operated cam. Optional – Allen key, cylinder key, paddle latch, or vandal resistant latch. All of MIFAB's cylinder key locks are keyed alike.

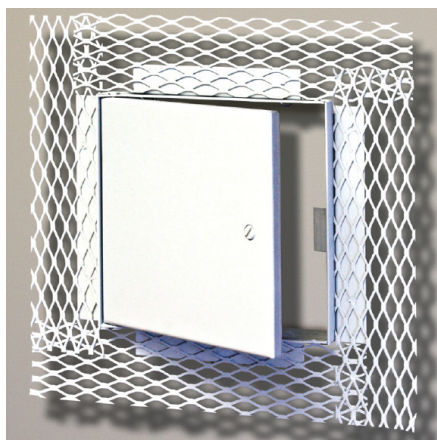
**Packaging:** Individual pack.

### CAD-FL / CAD-FL-PL OPTIONAL VARIATIONS

SUFFIX	DESCRIPTION	LIST PRICE, EACH
-A	Allen key lock	\$17.00
-C	Cylinder key lock	\$20.00
-PL	Paddle latch	\$62.50
-VP	Vandal resistant	\$62.50

**NOTE:** The hinge is always furnished on the "A" or height (longer) dimension, unless otherwise specified.

## SERIES CAD-FL-PL CEILING OR WALL ACCESS DOOR, FLUSH DOOR WITH FRAME, PLASTER FINISH



### DESCRIPTION

The MIFAB® CAD-FL-PL recessed access door is designed for flush installation in drywall or plaster surfaces. The door panel is flush with the frame. When installed flush with the wall or ceiling, only the door panel is exposed. A 2 3/4" (70) wide metal lath on all sides provides a rigid frame. A mounting bracket is recessed 5/8" (15) from the door. It has a unique white finish.

### SPECIFICATIONS

**Material:** CAD-FL-PL Series is a 16 gage satin coat door and a 16 gage satin coat frame. The CAD-FL-PLSS Stainless Steel Series is 16 gage #304 stainless steel door and frame.

**Finish:** Satin coat steel doors have a primed white finish. Stainless steel doors have a #4 brush satin finish.

**Door:** Flush to frame. Turned back around edges for extra rigidity.

**Frame:** Mounting flange is 1 1/8" (28) wide and recessed 5/8" (15) from the door. A 2 3/4" (70) wide self furring metal lath lines the flange.

**Hinge:** Concealed pivot pins.

**Latch:** Standard – Flush mounted, screwdriver operated cam. Optional – Allen key, cylinder key, paddle latch, or vandal resistant latch. All of MIFAB's cylinder key locks are keyed alike.

**Packaging:** Individual pack.

"B" x "A"	WALL OPENING	SHIP WEIGHT (Lbs.)	LATCHES	MILD STEEL MODEL #	LIST PRICE MILD STEEL	STAINLESS STEEL MODEL #	LIST PRICE STAINLESS	MILD STEEL MODEL #	LIST PRICE MILD STEEL	STAINLESS STEEL MODEL #	LIST PRICE STAINLESS
8" x 8"	6-3/16" x 8-3/16"	4.0	1	CAD-FL0808	\$94.00	CAD-FLSS0808	\$281.00	CAD-FL-PL0808	\$120.00	CAD-FL-PLSS0808	\$359.00
8" x 12"	8-3/16" x 12-3/16"	5.0	1	CAD-FL0812	\$104.00	CAD-FLSS0812	\$309.00	CAD-FL-PL0812	\$129.00	CAD-FL-PLSS0812	\$386.00
10" x 10"	10-3/16" x 10-3/16"	5.5	1	CAD-FL1010	\$100.00	CAD-FLSS1010	\$299.00	CAD-FL-PL1010	\$125.00	CAD-FL-PLSS1010	\$376.00
12" x 12"	12-3/16" x 12-3/16"	6.0	1	CAD-FL1212	\$106.00	CAD-FLSS1212	\$317.00	CAD-FL-PL1212	\$131.00	CAD-FL-PLSS1212	\$395.00
12" x 16"	12-3/16" x 16-3/16"	7.0	1	CAD-FL1216	\$118.00	CAD-FLSS1216	\$352.00	CAD-FL-PL1216	\$144.00	CAD-FL-PLSS1216	\$430.00
12" x 18"	12-3/16" x 18-3/16"	8.0	1	CAD-FL1218	\$121.00	CAD-FLSS1218	\$363.00	CAD-FL-PL1218	\$148.00	CAD-FL-PLSS1218	\$441.00
12" x 24"	12-3/16" x 24-3/16"	11.4	3	CAD-FL1224	\$131.00	CAD-FLSS1224	\$394.00	CAD-FL-PL1224	\$157.00	CAD-FL-PLSS1224	\$470.00
14" x 14"	14-3/16" x 14-3/16"	7.8	1	CAD-FL1414	\$115.00	CAD-FLSS1414	\$343.00	CAD-FL-PL1414	\$140.00	CAD-FL-PLSS1414	\$421.00
16" x 16"	16-3/16" x 16-3/16"	9.6	1	CAD-FL1616	\$126.00	CAD-FLSS1616	\$377.00	CAD-FL-PL1616	\$151.00	CAD-FL-PLSS1616	\$455.00
16" x 20"	16-3/16" x 20-3/16"	11.4	1	CAD-FL1620	\$134.00	CAD-FLSS1620	\$401.00	CAD-FL-PL1620	\$159.00	CAD-FL-PLSS1620	\$478.00
18" x 18"	18-3/16" x 18-3/16"	11.4	3	CAD-FL1818	\$134.00	CAD-FLSS1818	\$400.00	CAD-FL-PL1818	\$159.00	CAD-FL-PLSS1818	\$478.00
18" x 24"	18-3/16" x 24-3/16"	15.0	3	CAD-FL1824	\$148.00	CAD-FLSS1824	\$444.00	CAD-FL-PL1824	\$174.00	CAD-FL-PLSS1824	\$522.00
20" x 24"	20-3/16" x 24-3/16"	17.0	3	CAD-FL2024	\$154.00	CAD-FLSS2024	\$463.00	CAD-FL-PL2024	\$181.00	CAD-FL-PLSS2024	\$539.00
20" x 30"	20-3/16" x 30-3/16"	19.0	5	CAD-FL2030	\$187.00	CAD-FLSS2030	\$561.00	CAD-FL-PL2030	\$213.00	CAD-FL-PLSS2030	\$639.00
24" x 24"	24-3/16" x 24-3/16"	18.3	3	CAD-FL2424	\$174.00	CAD-FLSS2424	\$523.00	CAD-FL-PL2424	\$200.00	CAD-FL-PLSS2424	\$601.00
24" x 30"	24-3/16" x 30-3/16"	20.0	5	CAD-FL2430	\$207.00	CAD-FLSS2430	\$615.00	CAD-FL-PL2430	\$231.00	CAD-FL-PLSS2430	\$693.00
24" x 36"	24-3/16" x 36-3/16"	24.5	5	CAD-FL2436	\$222.00	CAD-FLSS2436	\$541.00	CAD-FL-PL2436	\$248.00	CAD-FL-PLSS2436	\$745.00
30" x 30"	30-3/16" x 30-3/16"	24.5	5	CAD-FL3030	\$227.00	CAD-FLSS3030	\$680.00	CAD-FL-PL3030	\$254.00	CAD-FL-PLSS3030	\$759.00
36" x 36"	36-3/16" x 36-3/16"	28.0	5	CAD-FL3636	\$268.00	CAD-FLSS3636	\$800.00	CAD-FL-PL3636	\$293.00	CAD-FL-PLSS3636	\$878.00

Design and dimensions are subject to modification. Prices do not include applicable taxes. Visit [www.mifab.com](http://www.mifab.com) for the most recent product information.

## SERIES CAD-FR CEILING OR WALL ACCESS DOOR, FIRE RESISTANT



### DESCRIPTION

The MIFAB CAD-FR fire resistant access door is designed for use in a suspended drywall ceiling. The CAD-FR is not fire rated. However, the combination of steel and fire rated tile supplied by others may maintain the fire resistant quality of the ceiling assembly. The door panel is recessed 1 1/2" to accommodate dual layered ceiling tile. Consult local Fire Codes for each application.

### SPECIFICATIONS

**Material:** CAD-FR Series is 16 gage satin coat steel door and 16 gage satin coat steel frame. The CAD-FRSS stainless steel Series is 16 gage # 304 stainless steel door and frame.

**Finish:** Satin coat steel doors have a primed white finish. Stainless steel doors have a #4 brush satin finish.

**Door:** Recessed 1 1/2" (38) door panel to accept tile, drywall or finishing materials.

**Frame:** Flush to surface. Mounting flange is 1 1/8" (28) wide and recessed 5/8" (16) from the door.

**Hinge:** Concealed pivot pins

**Latch:** Standard – Flush Mounted, screwdriver operated cam. Optional – Allen key, cylinder key, or vandal resistant latch. All of MIFAB's cylinder key locks are keyed alike.

**Packaging:** Individual pack.

CAD-FR OPTIONAL VARIATIONS		
SUFFIX	DESCRIPTION	LIST PRICE, EACH
-A	Allen key lock	\$17.00
-C	Cylinder key lock	\$20.00
-VP	Vandal resistant	\$62.50

"B" x "A"	WALL OPENING	SHIP WEIGHT (Lbs.)	LATCHES	MILD STEEL MODEL #	LIST PRICE MILD STEEL	STAINLESS STEEL MODEL #	LIST PRICE STAINLESS
12" x 12"	12-3/16" x 12-3/16"	7.3	1	CAD-FR1212	\$116.50	CAD-FRSS1212	\$354.00
18" x 18"	18-3/16" x 18-3/16"	12.5	3	CAD-FR1818	\$140.00	CAD-FRSS1818	\$405.00
24" x 24"	24-3/16" x 24-3/16"	21.8	3	CAD-FR2424	\$171.50	CAD-FRSS2424	\$522.00
22" x 30"	22-3/16" x 30-3/16"	26.0	4	CAD-FR2230	\$198.50	CAD-FRSS2230	\$603.00

**NOTE:** The hinge is always furnished on the "A" or height (longer) dimension, unless otherwise specified.

## SERIES UD DUCT ACCESS DOOR



### DESCRIPTION

The MIFAB UD Series of duct access doors are designed to provide access to equipment installed within ducts. The door panels are insulated and gaskets between the panel and frame will assure tight seals without obstruction in the air system.

### SPECIFICATIONS

**Material:** UD Series is 24 gage galvanized steel door and 24 gage galvanized steel frame.

**Finish:** Not painted. Shipped in natural galvanized steel finish.

**Door:** 1" (25) thick, double wall construction and insulated.

**Frame:** With bend over tabs to attach to the duct.

**Hinge:** Continuous piano type.

**Latch:** Standard – Cam latch is self-tightening and hand operated.

**Packaging:** Individual pack

"B" x "A"	SHIP WEIGHT (Lbs.)	LATCHES	MODEL # GALVANIZED STEEL	LIST PRICE GALVANIZED STEEL
6" x 6"	1.50	1	UD0606	\$31.50
8" x 8"	2.50	1	UD0808	\$33.00
10" x 10"	3.00	1	UD1010	\$39.00
12" x 12"	4.00	1	UD1212	\$42.00
14" x 14"	5.00	2	UD1414	\$50.00
16" x 16"	7.00	2	UD1616	\$59.00
18" x 18"	8.00	2	UD1818	\$66.50
20" x 20"	11.00	2	UD2020	\$74.00
24" x 24"	13.00	2	UD2424	\$89.00

**NOTE:** The hinge is always furnished on the "A" or height (longer) dimension, unless otherwise specified.

Design and dimensions are subject to modification. Prices do not include applicable taxes. Visit [www.mifab.com](http://www.mifab.com) for the most recent product information.

MIFAB, Inc.

sales@mifab.com

Toll Free 1-800-387-3880

Fax 1-773-341-3049

[www.mifab.com](http://www.mifab.com)

All sales subject to MIFAB's Terms and Warranties. Please refer to inside front cover.



## SERIES MPFR INSULATED FIRE RATED ACCESS DOOR



### DESCRIPTION

The MIFAB® MPFR fire rated access door is approved by Underwriters Laboratories Inc., for 1 1/2 hours, "B" label in walls and is approved by Warnock Hersey for 2 hours in ceilings and 3 hours in walls. The door meets ANSI-UL 10B standards. The same door can be used in walls and ceilings. Tests were conducted using mild steel and Type 304 stainless steel.

### SPECIFICATIONS

**Material:** MPFR Series is 16 gage satin coat steel front door with 20 gage backliner and 16 gage satin coat steel frame. The MPFRSS Stainless Steel Series is 16 gage #304 stainless steel front door with 20 gage backliner and 16 gage #304 stainless steel frame.

**Finish:** Satin coat steel doors have a primed white finish. Stainless steel doors have a #4 brush satin finish.

**Door:** Flush to frame. Self-closing. Can be opened from the inside or back of the door with MIFAB's unique thumb turn latch.

**Frame:** Four piece welded frame with masonry mounting straps.

**Hinge:** Concealed pivot pins.

**Spring:** Heavy duty. An extra spring is provided with every door greater than 14" x 14" (356 x 356) for ceiling installation. Both springs must be attached to the door to ensure that the door will close when installed in the ceiling.

**Latch:** Standard – Flush mounted, interchangeable turn ring operator and key operator latch. Optional - cylinder key lock. All of MIFAB's cylinder key locks are keyed alike.

**Fire Rating:** Underwriters Laboratories "B" label. 1 1/2 hours for walls. Warnock Hersey: 1 hour combustible ceilings and walls, 2 hour non-combustible ceilings, and 3 hour non-combustible walls. Ceiling fire ratings are up to and including the 24" x 36" (610 x 914) size.

**Insulation:** Roxul Rockboard 80. 2" (50) thick and fire retardant.

**Packaging:** Individual pack.

"B" x "A"	WALL OPENING	SHIP WEIGHT (Lbs.)	LATCHES	MILD STEEL MODEL #	LIST PRICE MILD STEEL	STAINLESS STEEL MODEL #	LIST PRICE STAINLESS
8" x 8"	8-1/2" x 8-1/2"	10.0	1	MPFR0808	\$138.00	MPFRSS0808	\$414.00
10" x 10"	10-1/2" x 10-1/2"	12.0	1	MPFR1010	\$172.00	MPFRSS1010	\$517.00
12" x 12"	12-1/2" x 12-1/2"	14.0	1	MPFR1212	\$160.00	MPFRSS1212	\$480.00
12" x 18"	12-1/2" x 18-1/2"	16.0	1	MPFR1218	\$198.00	MPFRSS1218	\$592.00
12" x 24"	12-1/2" x 24-1/2"	19.0	1	MPFR1224	\$249.00	MPFRSS1224	\$748.00
14" x 14"	14-1/2" x 14-1/2"	15.5	1	MPFR1414	\$183.00	MPFRSS1414	\$549.00
16" x 16"	16-1/2" x 16-1/2"	16.5	1	MPFR1616	\$187.00	MPFRSS1616	\$562.00
18" x 18"	18-1/2" x 18-1/2"	19.0	1	MPFR1818	\$193.00	MPFRSS1818	\$579.00
20" x 20"	20-1/2" x 20-1/2"	24.0	1	MPFR2020	\$260.00	MPFRSS2020	\$781.00
22" x 22"	22-1/2" x 22-1/2"	28.0	1	MPFR2222	\$280.00	MPFRSS2222	\$840.00
22" x 30"	22-1/2" x 30-1/2"	35.0	2	MPFR2230	\$280.00	MPFRSS2230	\$840.00
24" x 24"	24-1/2" x 24-1/2"	30.0	1	MPFR2424	\$224.00	MPFRSS2424	\$671.00
24" x 36"	24-1/2" x 36-1/2"	46.0	2	MPFR2436	\$400.00	MPFRSS2436	\$1,201.00
24" x 48"	24-1/2" x 48-1/2"	65.0	2	MPFR2448	\$459.00	MPFRSS2448	\$1,376.00
30" x 30"	30-1/2" x 30-1/2"	45.0	1	MPFR3030	\$390.00	MPFRSS3030	\$1,168.00
32" x 32"	32-1/2" x 32-1/2"	47.0	1	MPFR3232	\$560.00	MPFRSS3232	\$1,681.00
36" x 36"	36-1/2" x 36-1/2"	60.0	2	MPFR3636	\$617.00	MPFRSS3636	\$1,852.00
36" x 48"	36-1/2" x 48-1/2"	80.0	2	MPFR3648	\$828.00	MPFRSS3648	\$2,484.00

MPFR OPTIONAL VARIATIONS		
SUFFIX	DESCRIPTION	LIST PRICE, EACH
-C	Cylinder key lock	\$20.00

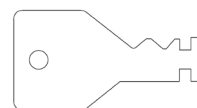
**NOTE:** The hinge is always furnished on the "A" or height (longer) dimension, unless otherwise specified.

**Note:** Custom sized MPFR Series of access doors cannot exceed 1,728 square inches with the fire rated approval.

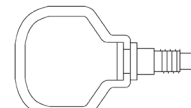
**Warnock Hersey**



California State  
Fire Marshall  
Approval #  
3330-1535:00



**Key  
Operator**



**Turn Ring  
Operator**

Design and dimensions are subject to modification. Prices do not include applicable taxes. Visit [www.mifab.com](http://www.mifab.com) for the most recent product information.

MIFAB, Inc.

sales@mifab.com

Toll Free 1-800-387-3880

Fax 1-773-341-3049

[www.mifab.com](http://www.mifab.com)

All sales subject to MIFAB's Terms and Warranties. Please refer to inside front cover.



**SERIES MFRU**
**UNINSULATED FIRE RATED ACCESS DOOR**

**DESCRIPTION**

The MIFAB® MFRU uninsulated fire rated access door is approved by Underwriters Laboratories Inc., for 1 1/2 hours, "B" label in walls. The door meets ANSI-UL 10B standards. It has a unique white finish.

**SPECIFICATIONS**

**Material:** MFRU Series is 16 gage satin coat steel door and frame. The MFRUSS Stainless Steel Series is 16 gage #304 stainless steel door and frame.

**Finish:** Satin coat steel doors have a primed white finish. Stainless steel doors have a #4 brush satin finish.

**Door:** Flush to frame. Self-closing. Can be opened from the inside or back of the door with MIFAB's unique thumb turn latch.

**Frame:** Four piece welded frame with masonry mounting straps.

**Hinge:** Concealed pivot pins.

**Spring:** Heavy duty.

**Latch:** Standard - Flush mounted, interchangeable turn ring operator and key operator latch. Optional - cylinder key lock. All of MIFAB's cylinder key locks are keyed alike.

**Fire Rating:** Underwriters Laboratories "B" label. 1 1/2 hour for walls. Insulation not required.

**Packaging:** Individual pack.

"B" x "A"	WALL OPENING	SHIP WEIGHT (Lbs.)	LATCHES	MILD STEEL MODEL #	LIST PRICE MILD STEEL	STAINLESS STEEL MODEL #	LIST PRICE STAINLESS
8" x 8"	8-1/2" x 8-1/2"	9.0	1	MFRU0808	\$108.00	MFRUSS0808	\$435.00
10" x 10"	10-1/2" x 10-1/2"	10.0	1	MFRU1010	\$112.00	MFRUSS1010	\$334.00
12" x 12"	12-1/2" x 12-1/2"	12.5	1	MFRU1212	\$108.00	MFRUSS1212	\$324.00
12" x 18"	12-1/2" x 18-1/2"	14.5	1	MFRU1218	\$140.00	MFRUSS1218	\$421.00
12" x 24"	12-1/2" x 24-1/2"	17.0	1	MFRU1224	\$161.00	MFRUSS1224	\$483.00
14" x 14"	14-1/2" x 14-1/2"	14.0	1	MFRU1414	\$116.00	MFRUSS1414	\$348.00
16" x 16"	16-1/2" x 16-1/2"	15.0	1	MFRU1616	\$127.50	MFRUSS1616	\$381.00
18" x 18"	18-1/2" x 18-1/2"	17.0	1	MFRU1818	\$149.00	MFRUSS1818	\$447.00
20" x 20"	20-1/2" x 20-1/2"	21.5	1	MFRU2020	\$179.00	MFRUSS2020	\$536.00
22" x 22"	22-1/2" x 22-1/2"	25.0	1	MFRU2222	\$185.00	MFRUSS2222	\$556.00
22" x 30"	22-1/2" x 30-1/2"	31.5	1	MFRU2230	\$185.00	MFRUSS2230	\$556.00
24" x 24"	24-1/2" x 24-1/2"	27.0	1	MFRU2424	\$165.00	MFRUSS2424	\$496.00
24" x 36"	24-1/2" x 36-1/2"	41.5	2	MFRU2436	\$268.00	MFRUSS2436	\$804.00
24" x 48"	24-1/2" x 48-1/2"	58.5	2	MFRU2448	\$293.00	MFRUSS2448	\$880.00
30" x 30"	30-1/2" x 30-1/2"	40.5	2	MFRU3030	\$293.00	MFRUSS3030	\$880.00
32" x 32"	32-1/2" x 32-1/2"	42.5	2	MFRU3232	\$338.00	MFRUSS3232	\$1,012.00
36" x 36"	36-1/2" x 36-1/2"	54.0	2	MFRU3636	\$380.00	MFRUSS3636	\$1,138.00
36" x 48"	36-1/2" x 48-1/2"	72.5	2	MFRU3648	\$528.00	MFRUSS3648	\$1,584.00

**MFRU OPTIONAL VARIATIONS**

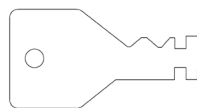
SUFFIX	DESCRIPTION	LIST PRICE, EACH
-C	Cylinder key lock	\$20.00

**NOTE:** The hinge is always furnished on the "A" or height (longer) dimension, unless otherwise specified.

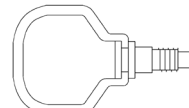
**Note:** Custom sized MFRU Series of access doors cannot exceed 1,728 square inches with the fire rated approval.



California State  
Fire Marshall  
Approval #  
3330-1535:00



**Key  
Operator**



**Turn Ring  
Operator**

Design and dimensions are subject to modification. Prices do not include applicable taxes. Visit [www.mifab.com](http://www.mifab.com) for the most recent product information.

MIFAB, Inc.

[sales@mifab.com](mailto:sales@mifab.com)

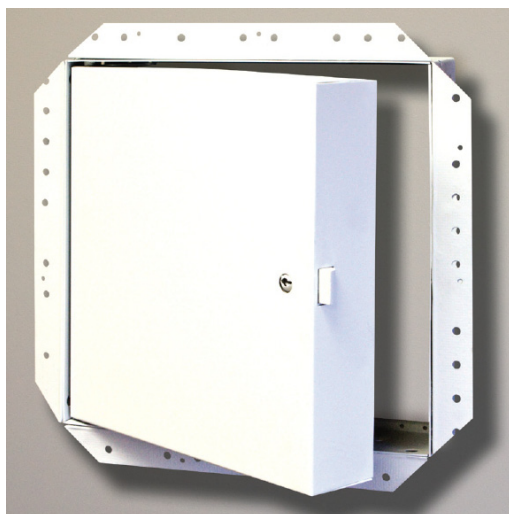
Toll Free 1-800-387-3880

Fax 1-773-341-3049

[www.mifab.com](http://www.mifab.com)

All sales subject to MIFAB's Terms and Warranties. Please refer to inside front cover.

# SERIES MPFR-DW INSULATED FIRE RATED ACCESS DOOR WITH DRYWALL BEAD FRAME



## DESCRIPTION

The MIFAB® MPFR-DW fire rated access door is approved by Underwriters Laboratories Inc., for 1 1/2 hours, "B" label in walls and is approved by Warnock Hersey for 2 hours in ceilings and 3 hours in walls. It meets ANSI-UL 10B standards. The same door can be used in walls and ceilings. Tests were conducted using mild steel and Type 304 stainless steel. The MPFR-DW incorporates a drywall bead type of frame for a concealed frame application.

## SPECIFICATIONS

**Material:** MPFR-DW Series is 16 gage satin coat steel front door with 20 gage backliner and 16 gage satin coat steel frame. The MPFR-DWSS Stainless Steel Series is 16 gage #304 stainless steel front door with 20 gage backliner and 16 gage #304 stainless steel frame.

**Finish:** Satin coat steel doors have a primed white finish. Stainless steel doors have a #4 brush satin finish.

**Door:** Flush to frame. Self-closing. Can be opened from the inside or back of the door with MIFAB's unique thumb-turn latch.

**Frame:** Four piece welded frame with masonry mounting straps and drywall bead frame for concealed drywall applications.

**Hinge:** Concealed pivot pins.

**Spring:** Heavy duty. An extra spring is provided with every door greater than 14" x 14" (356 x 356) for ceiling installation. Both springs must be attached to the door to ensure that the door will close when installed in the ceiling.

**Latch:** Standard - Flush mounted, interchangeable turn-ring operator and key-operator latch. Optional - cylinder key lock. All of MIFAB's cylinder key locks are keyed alike.

**Fire Rating:** Underwriters Laboratories "B" label. 1 1/2 hours for walls. Warnock Hersey: 1 hour combustible ceilings and walls, 2 hour non-combustible ceilings and 3 hour noncombustible walls. Ceiling fire ratings are up to and including the 24" x 36" (610 x 914) size.

**Insulation:** Roxul Rockboard 80. 2" (50) thick and fire retardant.

**Packaging:** Individual pack.

"B" x "A"	WALL OPENING	SHIP WEIGHT (Lbs.)	LATCHES	MILD STEEL MODEL #	LIST PRICE MILD STEEL	STAINLESS STEEL MODEL #	LIST PRICE STAINLESS
8" x 8"	8-1/2" x 8-1/2"	10.0	1	MPFR-DW0808	\$155.00	MPFR-DWSS0808	\$431.00
10" x 10"	10-1/2" x 10-1/2"	12.0	1	MPFR-DW1010	\$189.00	MPFR-DWSS1010	\$534.00
12" x 12"	12-1/2" x 12-1/2"	14.0	1	MPFR-DW1212	\$177.00	MPFR-DWSS1212	\$497.00
12" x 18"	12-1/2" x 18-1/2"	16.0	1	MPFR-DW1218	\$215.00	MPFR-DWSS1218	\$609.00
12" x 24"	12-1/2" x 24-1/2"	19.0	1	MPFR-DW1224	\$266.00	MPFR-DWSS1224	\$765.00
14" x 14"	14-1/2" x 14-1/2"	15.5	1	MPFR-DW1414	\$200.00	MPFR-DWSS1414	\$566.00
16" x 16"	16-1/2" x 16-1/2"	16.5	1	MPFR-DW1616	\$204.00	MPFR-DWSS1616	\$579.00
18" x 18"	18-1/2" x 18-1/2"	19.0	1	MPFR-DW1818	\$210.00	MPFR-DWSS1818	\$596.00
20" x 20"	20-1/2" x 20-1/2"	24.0	1	MPFR-DW2020	\$277.00	MPFR-DWSS2020	\$798.00
22" x 22"	22-1/2" x 22-1/2"	28.0	1	MPFR-DW2222	\$297.00	MPFR-DWSS2222	\$857.00
22" x 30"	22-1/2" x 30-1/2"	35.0	2	MPFR-DW2230	\$297.00	MPFR-DWSS2230	\$857.00
24" x 24"	24-1/2" x 24-1/2"	30.0	1	MPFR-DW2424	\$241.00	MPFR-DWSS2424	\$688.00
24" x 36"	24-1/2" x 36-1/2"	46.0	2	MPFR-DW2436	\$417.00	MPFR-DWSS2436	\$1,218.00
24" x 48"	24-1/2" x 48-1/2"	65.0	2	MPFR-DW2448	\$476.00	MPFR-DWSS2448	\$1,393.00
30" x 30"	30-1/2" x 30-1/2"	45.0	1	MPFR-DW3030	\$407.00	MPFR-DWSS3030	\$1,185.00
32" x 32"	32-1/2" x 32-1/2"	47.0	1	MPFR-DW3232	\$577.00	MPFR-DWSS3232	\$1,698.00
36" x 36"	36-1/2" x 36-1/2"	60.0	2	MPFR-DW3636	\$634.00	MPFR-DWSS3636	\$1,869.00
36" x 48"	36-1/2" x 48-1/2"	80.0	2	MPFR-DW3648	\$845.00	MPFR-DWSS3648	\$2,501.00

## MPFR-DW OPTIONAL VARIATIONS

SUFFIX	DESCRIPTION	LIST PRICE, EACH
-C	Cylinder key lock	\$20.00

**NOTE:** The hinge is always furnished on the "A" or height (longer) dimension, unless otherwise specified.

**Note:** Custom sized MPFR-DW Series of access doors cannot exceed 1,728 square inches with the fire rated approval.

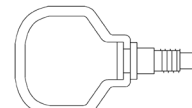
**Warnock Hersey**



California State  
Fire Marshall  
Approval #  
3330-1535:00



**Key  
Operator**



**Turn Ring  
Operator**

Design and dimensions are subject to modification. Prices do not include applicable taxes. Visit [www.mifab.com](http://www.mifab.com) for the most recent product information.

MIFAB, Inc.

[sales@mifab.com](mailto:sales@mifab.com)

Toll Free 1-800-387-3880

Fax 1-773-341-3049

[www.mifab.com](http://www.mifab.com)

All sales subject to MIFAB's Terms and Warranties. Please refer to inside front cover.

## SERIES MI-SAD MEDIUM SECURITY ACCESS DOOR



### DESCRIPTION

The MIFAB® MI-SAD medium security access door is designed for drywall, masonry, or concrete construction, providing the security required in today's schools, hospitals, hotels, and correctional institutions. It has a unique white finish.

### SPECIFICATIONS

**Material:** MI-SAD Series is 12 gage steel door and 3/16" angle steel frame. The MI-SADSS Stainless Steel Series is 12 gage #304 stainless steel door and 3/16" (4) angle stainless steel frame.

**Finish:** Satin coat steel doors have a primed white finish. Stainless steel doors have a #4 brush satin finish.

**Door:** Flush to frame.

**Frame:** 3/16" (4) x 1 1/2" (38) x 1 1/2" (38) angle steel, angle welded with joints ground smooth. The frame has pre-punched 3/16" (4) mounting holes for easy installation.

**Hinge:** Two heavy duty butt hinges welded to the door and frame.

**Latch:** Standard - Cylinder key lock. All of MIFAB's cylinder key locks are keyed alike.

**Packaging:** Individual pack.

"B" x "A"	WALL OPENING	SHIP WEIGHT (Lbs.)	LATCHES	MILD STEEL MODEL #	LIST PRICE MILD STEEL	STAINLESS STEEL MODEL #	LIST PRICE STAINLESS
8" x 8"	8-1/2" x 8-1/2"	10.0	1	MI-SAD0808	\$383.00	MI-SADSS0808	\$1,148.00
10" x 10"	10-1/2" x 10-1/2"	11.0	1	MI-SAD1010	\$408.00	MI-SADSS1010	\$1,224.00
12" x 12"	12-1/2" x 12-1/2"	17.0	1	MI-SAD1212	\$445.00	MI-SADSS1212	\$1,337.00
14" x 14"	14-1/2" x 14-1/2"	20.0	1	MI-SAD1414	\$510.00	MI-SADSS1414	\$1,528.00
16" x 16"	16-1/2" x 16-1/2"	24.0	1	MI-SAD1616	\$637.00	MI-SADSS1616	\$1,912.00
18" x 18"	18-1/2" x 18-1/2"	28.0	1	MI-SAD1818	\$700.00	MI-SADSS1818	\$2,101.00
18" x 24"	18-1/2" x 24-1/2"	34.0	1	MI-SAD1824	\$764.00	MI-SADSS1824	\$2,292.00
22" x 22"	22-1/2" x 22-1/2"	37.0	1	MI-SAD2222	\$892.00	MI-SADSS2222	\$2,676.00
24" x 24"	24-1/2" x 24-1/2"	41.0	1	MI-SAD2424	\$955.00	MI-SADSS2424	\$2,862.00
24" x 30"	24-1/2" x 30-1/2"	50.0	1	MI-SAD2430	\$1,019.00	MI-SADSS2430	\$3,057.00
24" x 36"	24-1/2" x 36-1/2"	56.0	2	MI-SAD2436	\$1,083.00	MI-SADSS2436	\$3,248.00
30" x 30"	30-1/2" x 30-1/2"	60.0	2	MI-SAD3030	\$1,210.00	MI-SADSS3030	\$3,629.00
36" x 36"	36-1/2" x 36-1/2"	75.0	2	MI-SAD3636	\$1,274.00	MI-SADSS3636	\$3,820.00

## SERIES MI-SADH HIGH SECURITY ACCESS DOOR



### DESCRIPTION

The MIFAB® MI-SADH high security access door is designed to provide security access, with the strength and durability to endure abusive and vandal-prone conditions, common in many institutions. It has a unique white finish.

### SPECIFICATIONS

**Material:** MI-SADH Series is 10 gage steel door and 1/4" angle steel frame. The MI-SADHSS Stainless Steel Series is 10 gage #304 stainless steel door and 1/4" (6) angle stainless steel frame.

**Finish:** Steel doors have a primed white finish. Stainless steel doors have a #4 brush satin finish.

**Door:** Flush to frame.

**Frame:** 1/4" x 2" x 2" (6 x 50 x 50) angle steel, angle welded with joints ground smooth. The frame has pre-punched 1/4" (6) mounting holes for easy installation.

**Hinge:** Two heavy duty butt hinges welded to the door and frame.

**Latch:** Standard - Best Lock #1E7D4-C228-RP3-626 with key. Optional - locks provided by others.

**Packaging:** Individual pack.

"B" x "A"	WALL OPENING	SHIP WEIGHT (Lbs.)	LATCHES	MILD STEEL MODEL #	LIST PRICE MILD STEEL	STAINLESS STEEL MODEL #	LIST PRICE STAINLESS
12" x 12"	12-1/2" x 12-1/2"	22.0	1	MI-SADH1212	\$891.00	MI-SADHSS1212	\$2,676.00
16" x 16"	16-1/2" x 16-1/2"	31.0	1	MI-SADH1616	\$955.00	MI-SADHSS1616	\$2,864.00
18" x 18"	18-1/2" x 18-1/2"	37.0	1	MI-SADH1818	\$960.00	MI-SADHSS1818	\$2,870.00
24" x 24"	24-1/2" x 24-1/2"	55.0	1	MI-SADH2424	\$1,216.00	MI-SADHSS2424	\$3,649.00
24" x 36"	24-1/2" x 36-1/2"	73.0	2	MI-SADH2436	\$1,448.00	MI-SADHSS2436	\$4,343.00
24" x 48"	24-1/2" x 48-1/2"	88.0	2	MI-SADH2448	\$1,621.00	MI-SADHSS2448	\$4,654.00
36" x 36"	36-1/2" x 36-1/2"	97.0	2	MI-SADH3636	\$1,737.00	MI-SADHSS3636	\$5,210.00
36" x 48"	36-1/2" x 48-1/2"	120.0	2	MI-SADH3648	\$2,559.00	MI-SADHSS3648	\$7,016.00

Design and dimensions are subject to modification. Prices do not include applicable taxes. Visit [www.mifab.com](http://www.mifab.com) for the most recent product information.

MIFAB, Inc.

sales@mifab.com

Toll Free 1-800-387-3880

Fax 1-773-341-3049

[www.mifab.com](http://www.mifab.com)

All sales subject to MIFAB's Terms and Warranties. Please refer to inside front cover.

## SERIES MI-FVP FLUSH VALVE PANEL



### DESCRIPTION

The MIFAB® MI-FVP flush valve panel is designed for back supply toilets and urinals where the flush valve is built into the wall. This panel allows easy access to service the flush valve by maintenance personnel. The panel provides protection to the flush valve from vandalism.

### SPECIFICATIONS

**Material:** MI-FVP Series is 16 gage satin coat steel door and 16 gage satin coat steel frame. The MI-FVPSS Stainless Steel Series is 16 gage #304 stainless steel door and frame.

**Finish:** Steel doors have a primed white finish. Stainless steel doors have a #4 brush satin finish.

**Door:** Has a 1½" (38) diameter hole in the center of the panel for the flush valve pushbutton. Optional - solid door with no hole in the middle - Suffix "-NH".

**Frame:** Two piece construction with 5/16" x 11/16" (8 x 17.5) OBL Slots for easy installation.

**Latch:** Four 1/4" (6) - 20 x 1" (25) tamper resistant stainless steel Torx screws.

**Packaging:** Individual pack.

"B" x "A"	DOOR SIZE	WALL OPENING	SHIPPING WEIGHT (Lbs.)	MILD STEEL MODEL #	LIST PRICE MILD STEEL	STAINLESS STEEL MODEL #	LIST PRICE STAINLESS
MI-FVP-1	12" x 12"	10-1/2" x 10-1/2"	6.00	MI-FVP1212	\$134.00	MI-FVPSS1212	\$400.00
MI-FVP-2	13" x 17"	11-1/2" x 15-1/2"	7.00	MI-FVP1317	\$179.00	MI-FVPSS1317	\$536.00

## SERIES MI-SF SURFACE ACCESS DOOR



### DESCRIPTION

The MIFAB® MI-SF surface access door is designed for surface installation on drywall, masonry, or thin-coat plaster. The door is attached to the frame with a continuous piano hinge allowing 175 degree opening. It has a unique white finish.

### SPECIFICATIONS

**Material:** MI-SF Series is 16 gage steel door and frame. The MI-SFSS Stainless Steel Series is 16 gage #304 stainless steel door and frame.

**Finish:** Satin coat steel doors have a primed white finish. Stainless steel doors have a #4 brush satin finish.

**Door:** Flush to frame. One 1/4" (6) hole in each corner. A 3/8" (9) wide outer perimeter space of the frame is bent on a fifteen degree angle toward the wall.

**Hinge:** Continuous piano hinge. 175 degree opening.

**Latch:** Standard - Flush mounted, screwdriver operated cam. Optional - Allen key, cylinder key, or vandal resistant latch. All of MIFAB's cylinder key locks are keyed alike.

**Packaging:** Individual pack.

MI-SF OPTIONAL VARIATIONS		
SUFFIX	DESCRIPTION	LIST PRICE, EACH
-A	Allen key lock	\$17.00
-C	Cylinder key lock	\$20.00
-VP	Vandal resistant	\$62.50

**NOTE:** The hinge is always furnished on the "A" or height (longer) dimension, unless otherwise specified.

"B" x "A"	SHIP WEIGHT (Lbs.)	LATCHES	MILD STEEL MODEL #	LIST PRICE MILD STEEL	STAINLESS STEEL MODEL #	LIST PRICE STAINLESS
8" x 8"	2.5	1	MI-SF0808	\$50.00	MI-SFSS0808	\$148.00
10" x 10"	3.5	1	MI-SF1010	\$54.00	MI-SFSS1010	\$163.50
12" x 12"	4.0	1	MI-SF1212	\$60.00	MI-SFSS1212	\$179.00
14" x 14"	6.0	1	MI-SF1414	\$68.00	MI-SFSS1414	\$202.00
16" x 16"	8.0	1	MI-SF1616	\$77.00	MI-SFSS1616	\$231.50
18" x 18"	9.5	3	MI-SF1818	\$84.00	MI-SFSS1818	\$251.50
22" x 22"	13.5	3	MI-SF2222	\$103.00	MI-SFSS2222	\$307.00
24" x 24"	16.0	3	MI-SF2424	\$120.00	MI-SFSS2424	\$360.00



## SERIES MI-VB, MI-VB-SM VALVE BOX



### DESCRIPTION

The MIFAB® MI-VB valve box is designed to provide easy access to all types of valves and controls that are concealed in the wall and need to be protected by a fully enclosed box. The MIFAB® MI-VB-SM valve box is designed to provide easy access to all types of valves and controls that extend outside of the finished wall and need to be protected by a fully enclosed box. The depth of all valve boxes can be customized to meet any rough in requirements.

### SPECIFICATIONS

**Material:** MI-VB Series is a 16 gage satin coat steel door and frame and a 20 gage satin coat steel box. The MI-VB-SM is 16 gage stain coat steel door and box. The MI-VBSS is a 16 gage #304 stainless steel door and frame with a 20 gage #304 stainless steel box. The MI-VB-SMSS is a 16 gage #304 stainless steel door and box.

**Finish:** All Satin Coat VB's have a prime white finish. MI-VBSS has a #4 brush satin finish on door and frame and a 2B finish on the box. MI-VB-SMSS has a #4 brush satin finish on door as well as the box.

**Door:** MI-VB Series - flush to frame. Turned back around edges for extra rigidity. MI-VB-SM Series - overlaps box, providing a tight secure fit. Optional - opening cut out of door to allow for glass or plastic window to be installed - window material supplied by others.

**Frame:** MI-VB Series - pre-punched mounting holes for simple installation. It is welded to the box.

**Hinge:** Concealed pivot pins.

**Latch:** Standard - Flush mounted, screwdriver operated cam. Optional - Allen key, cylinder key, or paddle latch. All of MIFAB's cylinder key locks are keyed alike.

**Packaging:** Individual pack.



MI-VB-SM with optional cut out of door to allow for glass or plastic window by others.  
(Illustrated)  
(Suffix -CO)

### MI-VB, MI-VB-SM OPTIONAL VARIATIONS

SUFFIX	DESCRIPTION	LIST PRICE, EACH
-A	Allen key lock	\$17.00
-C	Cylinder key lock	\$20.00
-PL	Paddle latch	\$62.50
-VP	Vandal resistant	\$62.50
-WR	Water resistant	\$100.00

**NOTE:** The hinge is always furnished on the "A" or height (longer) dimension, unless otherwise specified.

MI-VB SERIES (RECESSED)							
"B" x "A"	DOOR SIZE	SHIPPING WEIGHT (Lbs.)	LATCHES	MILD STEEL MODEL #	LIST PRICE MILD STEEL	STAINLESS STEEL MODEL #	LIST PRICE STAINLESS
8" x 8" x 4"	8" x 8" x 4"	10.0	1	MI-VB080804	\$184.50	MI-VBSS080804	\$553.00
8" x 8" x 6"	8" x 8" x 6"	12.0	1	MI-VB080806	\$198.50	MI-VBSS080806	\$592.00
8" x 8" x 8"	8" x 8" x 8"	14.0	1	MI-VB080808	\$216.50	MI-VBSS080808	\$648.50
12" x 12" x 4"	12" x 12" x 4"	18.0	1	MI-VB121204	\$229.50	MI-VBSS121204	\$688.50
12" x 12" x 6"	12" x 12" x 6"	20.0	1	MI-VB121206	\$242.50	MI-VBSS121206	\$728.00
12" x 12" x 8"	12" x 12" x 8"	24.0	1	MI-VB121208	\$255.00	MI-VBSS121208	\$764.50
14" x 14" x 4"	14" x 14" x 4"	26.0	1	MI-VB141404	\$287.00	MI-VBSS141404	\$860.00
14" x 14" x 6"	14" x 14" x 6"	28.0	1	MI-VB141406	\$299.50	MI-VBSS141406	\$897.00
14" x 14" x 8"	14" x 14" x 8"	30.0	1	MI-VB141408	\$319.00	MI-VBSS141408	\$956.00
16" x 16" x 4"	16" x 16" x 4"	32.0	1	MI-VB161604	\$299.50	MI-VBSS161604	\$897.00
16" x 16" x 6"	16" x 16" x 6"	34.0	1	MI-VB161606	\$319.00	MI-VBSS161606	\$956.00
16" x 16" x 8"	16" x 16" x 8"	36.0	1	MI-VB161608	\$339.00	MI-VBSS161608	\$995.00

MI-VB-SM SERIES (SURFACE MOUNTED)							
"B" x "A"	DOOR SIZE	SHIPPING WEIGHT (Lbs.)	LATCHES	MILD STEEL MODEL #	LIST PRICE MILD STEEL	STAINLESS STEEL MODEL #	LIST PRICE STAINLESS
8" x 8" x 4"	8" x 8" x 4"	10.0	1	MI-VB-SM080804	\$184.50	MI-VB-SMSS080804	\$553.00
8" x 8" x 6"	8" x 8" x 6"	12.0	1	MI-VB-SM080806	\$198.50	MI-VB-SMSS080806	\$592.00
8" x 8" x 8"	8" x 8" x 8"	14.0	1	MI-VB-SM080808	\$216.50	MI-VB-SMSS080808	\$648.50
12" x 12" x 4"	12" x 12" x 4"	18.0	1	MI-VB-SM121204	\$229.50	MI-VB-SMSS121204	\$688.50
12" x 12" x 6"	12" x 12" x 6"	20.0	1	MI-VB-SM121206	\$242.50	MI-VB-SMSS121206	\$728.00
12" x 12" x 8"	12" x 12" x 8"	24.0	1	MI-VB-SM121208	\$255.00	MI-VB-SMSS121208	\$764.50
14" x 14" x 4"	14" x 14" x 4"	26.0	1	MI-VB-SM141404	\$287.00	MI-VB-SMSS141404	\$860.00
14" x 14" x 6"	14" x 14" x 6"	28.0	1	MI-VB-SM141406	\$299.50	MI-VB-SMSS141406	\$897.00
14" x 14" x 8"	14" x 14" x 8"	30.0	1	MI-VB-SM141408	\$319.00	MI-VB-SMSS141408	\$956.00
16" x 16" x 4"	16" x 16" x 4"	32.0	1	MI-VB-SM161604	\$299.50	MI-VB-SMSS161604	\$897.00
16" x 16" x 6"	16" x 16" x 6"	34.0	1	MI-VB-SM161606	\$319.00	MI-VB-SMSS161606	\$956.00
16" x 16" x 8"	16" x 16" x 8"	36.0	1	MI-VB-SM161608	\$339.00	MI-VB-SMSS161608	\$995.00

Design and dimensions are subject to modification. Prices do not include applicable taxes. Visit [www.mifab.com](http://www.mifab.com) for the most recent product information.

MIFAB, Inc.

sales@mifab.com

Toll Free 1-800-387-3880

Fax 1-773-341-3049

[www.mifab.com](http://www.mifab.com)

All sales subject to MIFAB's Terms and Warranties. Please refer to inside front cover.

## SERIES PA PLASTIC ACCESS DOOR



### DESCRIPTION

The MIFAB® PA plastic access door is designed to provide easy access to plumbing and cables behind walls and ceilings. The door is removable from the frame and fits tightly with snap latches. The white finish can be painted or wallpapered or left as is to match the surrounding environment. This door should not be installed near any existing or potential source of excessive heat or open flame.

### SPECIFICATIONS

**Material:** PA Series is made of 1/8" (3) thick high impact styrene plastic with U.V. stabilizers to prevent fading and corrosion.

**Finish:** White.

**Door:** Flush to frame - rounded safety corners. Two pull tabs on the back of the door allow door to be pulled back into the frame from behind walls and ceilings.

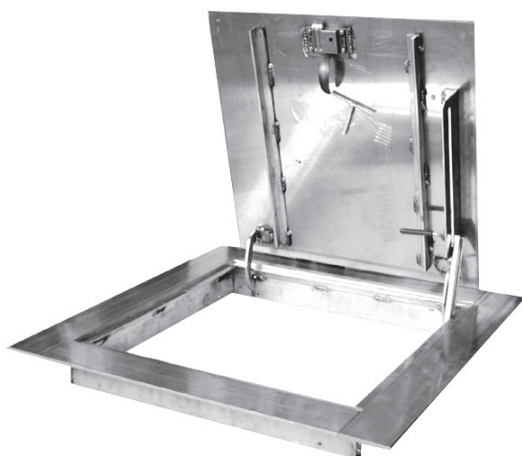
**Frame:** One piece outside flange that is 1 1/2" (38) wide with a 5/8" deep mounting flange.

**Latch:** Snap latches allow door to fit tightly into frame.

**Packaging:** 8" x 8" (203 x 203) and 14" x 14" (356 x 356) doors are packed 15 per carton and the 14" x 29" (356 x 736) doors are packed 5 per carton.

MODEL #	PA SERIES	WALL OPENING	SHIPPING WEIGHT (Lbs.) (UNIT)	SHIPPING WEIGHT (Lbs.) (CARTON)	LIST PRICE, EACH
PA0808	8" x 8"	7-7/8" x 7-7/8"	0.75	14.00	\$15.75
PA1414	14" x 14"	13-7/8" x 13-7/8"	1.75	30.00	\$21.00
PA1429	14" x 29"	13-7/8" x 28-7/8"	2.90	17.00	\$42.00

## SERIES FHA, FHG FLOOR ACCESS DOOR



### DESCRIPTION

The MIFAB Series FHA and FHG floor access doors are for interior and exterior use where easy access is required. The angle frame construction with integral anchor flange is designed to be cast into concrete. They are available in either prime coated steel (FHG) or aluminum (FHA). Standard units withstand load bearing of 300 lbs. per square foot. They are designed for safety, durability and ease of operation.

### SPECIFICATIONS

**Material:** FHG Series has a door made of 3/16" (5) thick A36 diamond plate. FHA Series has a door made of 3/16" (5) thick structural grade aluminum diamond plate. Both doors can support 300 lbs. per square foot live load. Frame material is composite hot rolled steel angle frame.

**Finish:** FHG Series is a primed grey finish. FHA Series is an aluminum mill finish. Frame is finished with a bituminous coating.

**Door:** Flush to frame. Equipped with an automatically locking hold open arm that locks the door in the open position. Also available are 1/4" (6) thick doors reinforced to meet AASHTO H20 traffic loading (without impact for the FHA Series)

**Frame:** Complete with a 1" (25) anchor flange. All hardware is Type # 316 stainless steel.

**Hinge:** Tamper proof steel hinges with stainless steel pins.

**Opening Device:** Automatic locking hold open arm with red vinyl grip allows door to open 90 degrees.

**Handle:** Stainless steel recessed lift handle in the door.

**Latch:** The lock provided is one of the following: padlock staple, Type # 316 stainless steel snap lock with removable handle, recessed hasp, Type # 316 stainless steel penta-head, keyed deadbolt lock or hasp and staple.

**Packaging:** Individual pack.

### Optional Accessories:

- Compression Spring Assist
- Skirting to Depth of Slab
- Fibreglass Insulation
- Safety Chains and Posts
- Access Nets - Safety Net System
- Hoists
- Bolt-on Style Ladders
- Suffix - H20 - 1/4" (6) thick door reinforced to meet AASHTO H20 traffic loading (without impact for the FHA Series)

"B" x "A"	FLOOR OPENING	FHA SHIPPING WT. (Lbs.)	FHG SHIPPING WT. (Lbs.)	GALVANIZED MODEL #	FHG LIST PRICE (GALVANIZED)	ALUMINUM MODEL #	FHA LIST PRICE (ALUMINUM)
24" x 24"	26-1/2" x 24-1/2"	42.0	90.0	FHG2424	\$991.00	FHA2424	\$1,157.00
24" x 30"	26-1/2" x 30-1/2"	49.0	105.0	FHG2430	\$1,139.00	FHA2430	\$1,335.00
24" x 36"	26-1/2" x 36-1/2"	55.0	120.0	FHG2436	\$1,197.00	FHA2436	\$1,522.00
30" x 30"	32-1/2" x 30-1/2"	56.0	122.0	FHG3030	\$1,354.00	FHA3030	\$2,433.00
30" x 36"	32-1/2" x 36-1/2"	64.0	138.0	FHG3036	\$1,391.00	FHA3036	\$2,588.00
30" x 48"	32-1/2" x 48-1/2"	78.0	172.0	FHG3048	\$1,770.00	FHA3048	\$2,857.00
36" x 36"	38-1/2" x 36-1/2"	72.0	156.0	FHG3636	\$1,878.00	FHA3636	\$3,051.00
36" x 48"	38-1/2" x 48-1/2"	89.0	194.0	FHG3648	\$2,047.00	FHA3648	\$3,345.00
42" x 42"	44-1/2" x 42-1/2"	90.0	196.0	FHG4242	\$1,967.00	FHA4242	\$3,097.00
48" x 48"	50-1/2" x 48-1/2"	108.0	240.0	FHG4848	\$2,434.00	FHA4848	\$3,334.00
48" x 72"	50-1/2" x 72-1/2"	150.0	332.0	FHG4872	\$4,029.00	FHA4872	\$4,908.00
60" x 60"	62-1/2" x 60-1/2"	155.0	340.0	FHG6060	\$4,970.00	FHA6060	\$5,840.00

Design and dimensions are subject to modification. Prices do not include applicable taxes. Visit [www.mifab.com](http://www.mifab.com) for the most recent product information.

MIFAB, Inc.

sales@mifab.com

Toll Free 1-800-387-3880

Fax 1-773-341-3049

[www.mifab.com](http://www.mifab.com)

All sales subject to MIFAB's Terms and Warranties. Please refer to inside front cover.

## SERIES RHA, RHG ROOF HATCH



### Optional Accessories:

- Bolt-on Style Ladders
- Handrail Extensions
- Ship's Ladder Configurations with side rails
- Pop Up Safety Post

### DESCRIPTION

The MIFAB Series RHA and RHG roof hatches are designed to provide convenient, economical access to the roofs of buildings. They are available in either prime coated galvanized steel (RHG) or aluminum (RHA). All hatches are designed with weather resistant gasketing to ensure long life, low maintenance and ease of operation. Roof hatches install easily over the roof opening and are secured from the base flange to the roof deck.

### SPECIFICATIONS

**Material:** RHG cover is 14 gage galvanized steel and 20 gauge steel liner. RHA cover is .090" aluminum with a .050 aluminum liner. The inside of the cover is gasketed with a neoprene weather seal to provide a flush, tight, fit. Covers are insulated with 1" (25) of fibreboard and are designed to support a snow load of 40 lbs. per square foot. The frame for the RHG Series is 14 gage galvanized steel and the frame for the RHA Series is .090" aluminum.

**Curb:** Curbs are 12" (305) high with 4" (102) wide rounded corner flashing flange complete with 1" (25) fibreboard insulation.

**Hinge:** Formed steel hinges with stainless steel pins.

**Finish:** RHG Series is a primed white finish. RHA Series is an aluminum mill finish.

**Opening:** Hydraulic column operators allow cover to open and close easily.

**Device:** Cover is equipped with an automatic hold open arm with a red vinyl grip release that keeps the cover in an open position when needed, and allows for easy control when lowering the latch cover.

**Handle:** Self latching outside cadmium plated steel turn handle with inside lever handle allows cover to always latch securely.

**Latch:** Locking hasps are located both inside and outside of the cover. All hardware is cadmium plated steel.

"B" x "A"	INSIDE FRAME DIM.	OUTSIDE FRAME DIM.	ROOF OPENING	SHIPPING WEIGHT RHA (Lbs.)	SHIPPING WEIGHT RHG (Lbs.)	GALVANIZED MODEL #	RHG LIST PRICE (GALVANIZED)	ALUMINUM MODEL #	RHA LIST PRICE (ALUMINUM)
24" x 24"	24" x 24"	31" x 31"	24" x 24"	60.0	125.0	RHG2424	\$1,030.00	RHA2424	\$1,050.00
24" x 30"	24" x 30"	31" x 37"	24" x 30"	65.0	130.0	RHG2430	\$1,088.00	RHA2430	\$1,106.00
24" x 36"	24" x 36"	31" x 43"	24" x 36"	70.0	135.0	RHG2436	\$1,125.00	RHA2436	\$1,139.00
30" x 30"	30" x 30"	37" x 37"	30" x 30"	80.0	145.0	RHG3030	\$1,170.00	RHA3030	\$1,346.00
30" x 36"	30" x 36"	37" x 43"	30" x 36"	85.0	155.0	RHG3036	\$1,275.00	RHA3036	\$1,425.00
30" x 54"	30" x 54"	37" x 61"	30" x 54"	135.0	225.0	RHG3054	\$1,393.00	RHA3054	\$1,550.00
30" x 96"	30" x 96"	37" x 103"	30" x 96"	245.0	335.0	RHG3096	\$2,693.00	RHA3096	\$3,369.00
36" x 36"	36" x 36"	43" x 43"	36" x 36"	110.0	200.0	RHG3636	\$1,685.00	RHA3636	\$3,750.00
36" x 48"	36" x 48"	43" x 55"	36" x 48"	270.0	430.0	RHG3648	\$2,475.00	RHA3648	\$4,050.00
48" x 48"	48" x 48"	55" x 55"	48" x 48"	305.0	430.0	RHG4848	\$2,679.00	RHA4848	\$4,350.00

## LOCKS AND LATCHES

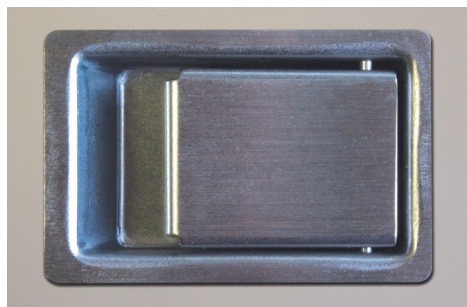


**Mortise Prep Cylinder Lock** - (MIFAB can cut an opening into the door panel to accept any lock requested by the customer.

**Note:** illustration is with lock and key but this is always provided by others.

**\$131.25** List Price, each

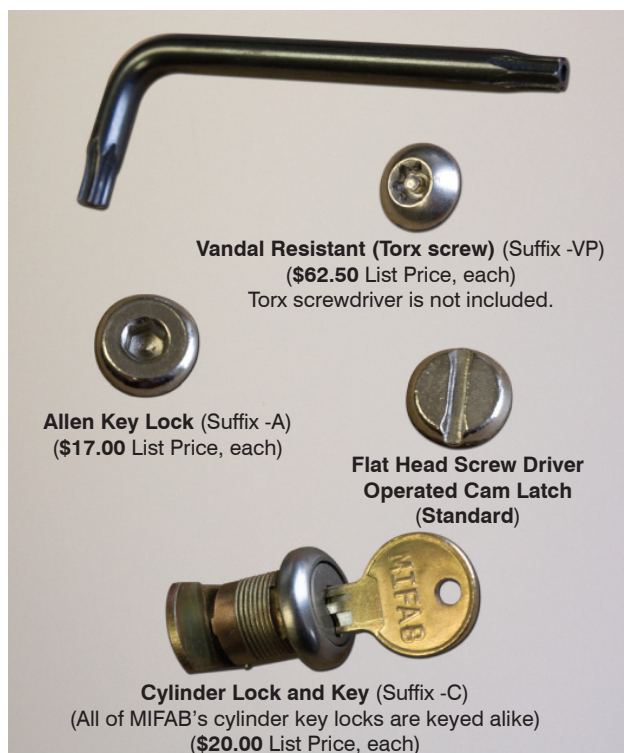
For the MPFR Series, the lock must be installed by MIFAB during the production process. (It cannot be installed later.)



### Paddle Latch

(Suffix -PL)

**\$62.50** List Price, each



**Vandal Resistant (Torx screw)** (Suffix -VP)  
**\$62.50** List Price, each

Torx screwdriver is not included.

**Allen Key Lock** (Suffix -A)  
**\$17.00** List Price, each

**Flat Head Screw Driver  
Operated Cam Latch**  
(Standard)

**Cylinder Lock and Key** (Suffix -C)  
(All of MIFAB's cylinder key locks are keyed alike)  
**\$20.00** List Price, each

Design and dimensions are subject to modification. Prices do not include applicable taxes. Visit [www.mifab.com](http://www.mifab.com) for the most recent product information.

MIFAB, Inc.

[sales@mifab.com](mailto:sales@mifab.com)

Toll Free 1-800-387-3880

Fax 1-773-341-3049

[www.mifab.com](http://www.mifab.com)

All sales subject to MIFAB's Terms and Warranties. Please refer to inside front cover.



## SERIES WID EXTERIOR ACCESS DOOR/WALK-IN DOOR



### DESCRIPTION

The MIFAB® WID exterior access doors are designed to provide convenient access to any exterior application, or anywhere that requires protection against air leakage and/or water penetration. WID doors are also designed to serve the custom air handling equipment manufacturers, as well as mechanical contractors who field assemble built-up air handling systems. All WID doors are manufactured with extruded aluminum flanged frames and door panel frames. Door panels are satin coat steel with optional stainless steel and aluminum sheet inserts. Door panels are insulated and gasketed. WID doors can be manufactured in custom sizes from 12" x 12" to 96" x 96". Consult the factory for larger applications.

### SPECIFICATIONS

**Flanged Frame:** .080" extruded aluminum

**Door Panel Frame:** .060" extruded aluminum

**Door Panels:** 20 gauge satin coat steel, with optional stainless steel and aluminum sheet

**Insulation:** .75 PCF fiberglass

**Handles:** Dual Acting Handles for inside and out side operation

**Gasket:** Extruded EPDM draft seal gasket

**Hinge:** Zinc plated steel continuous type

**Optional Viewport:** 9" x 9" or 12" x 12"

**Finish:** Mill

**Door Thickness:** 1", 1 1/2", 2" and 4" deep

**Size Range:** 12" x 12" thru 96" x 96"

**Swing:** Out-Swing (std) and In-Swing option

**Leakage Rated:** 2.05 CFM, at a test pressure of 12.0 inches of water column. (WID 2.0)

### WID Series with 1" Insulation Thickness

"B" x "A"	SHIPPING WEIGHT (Lbs.)	LATCHES	GALVANIZED MODEL #	GALVANIZED LIST PRICE	STAINLESS MODEL #	STAINLESS LIST PRICE	INSULATION THICKNESS
12" x 12"	15.00	1	WID1.0-1212	\$183.00	WIDSS1.0-1212	\$549.50	1"
12" x 24"	23.00	2	WID1.0-1224	\$238.00	WIDSS1.0-1224	\$713.00	1"
14" x 14"	17.00	1	WID1.0-1414	\$198.50	WIDSS1.0-1414	\$595.00	1"
16" x 16"	18.50	1	WID1.0-1616	\$218.00	WIDSS1.0-1616	\$654.00	1"
16" x 20"	20.00	1	WID1.0-1620	\$238.00	WIDSS1.0-1620	\$713.00	1"
16" x 36"	32.00	1	WID1.0-1636	\$425.00	WIDSS1.0-1636	\$1,062.00	1"
18" x 18"	20.00	1	WID1.0-1818	\$238.00	WIDSS1.0-1818	\$713.00	1"
20" x 30"	31.00	2	WID1.0-2030	\$425.00	WIDSS1.0-2030	\$1,061.00	1"
22" x 30"	32.00	2	WID1.0-2230	\$425.00	WIDSS1.0-2230	\$1,061.00	1"
22" x 36"	36.00	2	WID1.0-2236	\$450.00	WIDSS1.0-2236	\$1,125.00	1"
24" x 24"	28.00	1	WID1.0-2424	\$336.00	WIDSS1.0-2424	\$839.00	1"
24" x 36"	40.00	2	WID1.0-2436	\$503.00	WIDSS1.0-2436	\$1,103.00	1"
30" x 30"	38.00	2	WID1.0-3030	\$490.00	WIDSS1.0-3030	\$1,099.00	1"
30" x 60"	85.00	2	WID1.0-3060	\$750.00	WIDSS1.0-3060	\$1,500.00	1"
36" x 36"	50.00	2	WID1.0-3636	\$641.50	WIDSS1.0-3636	\$1,270.00	1"
36" x 48"	81.00	2	WID1.0-3648	\$746.00	WIDSS1.0-3648	\$1,367.00	1"

### WID Series with 1 1/2" Insulation Thickness

"B" x "A"	SHIPPING WEIGHT (Lbs.)	LATCHES	GALVANIZED MODEL #	GALVANIZED LIST PRICE	STAINLESS MODEL #	STAINLESS LIST PRICE	INSULATION THICKNESS
12" x 12"	17.00	1	WID1.5-1212	\$220.00	WIDSS1.5-1212	\$659.00	1 1/2"
12" x 24"	25.00	2	WID1.5-1224	\$285.00	WIDSS1.5-1224	\$856.00	1 1/2"
14" x 14"	19.00	1	WID1.5-1414	\$238.00	WIDSS1.5-1414	\$714.00	1 1/2"
16" x 16"	20.00	1	WID1.5-1616	\$262.00	WIDSS1.5-1616	\$785.00	1 1/2"
16" x 20"	22.00	1	WID1.5-1620	\$285.00	WIDSS1.5-1620	\$856.00	1 1/2"
16" x 36"	35.00	1	WID1.5-1636	\$510.00	WIDSS1.5-1636	\$1,275.00	1 1/2"
18" x 18"	22.00	1	WID1.5-1818	\$285.00	WIDSS1.5-1818	\$856.00	1 1/2"
20" x 30"	34.00	2	WID1.5-2030	\$510.00	WIDSS1.5-2030	\$1,275.00	1 1/2"
22" x 30"	34.00	2	WID1.5-2230	\$510.00	WIDSS1.5-2230	\$1,275.00	1 1/2"
22" x 36"	40.00	2	WID1.5-2236	\$540.00	WIDSS1.5-2236	\$1,350.00	1 1/2"
24" x 24"	31.00	1	WID1.5-2424	\$403.00	WIDSS1.5-2424	\$1,007.00	1 1/2"
24" x 36"	44.00	2	WID1.5-2436	\$605.00	WIDSS1.5-2436	\$1,324.00	1 1/2"
30" x 30"	42.00	2	WID1.5-3030	\$588.00	WIDSS1.5-3030	\$1,319.00	1 1/2"
30" x 60"	90.00	2	WID1.5-3060	\$900.00	WIDSS1.5-3060	\$1,800.00	1 1/2"
36" x 36"	55.00	2	WID1.5-3636	\$769.00	WIDSS1.5-3636	\$1,524.00	1 1/2"
36" x 48"	90.00	2	WID1.5-3648	\$895.00	WIDSS1.5-3648	\$1,641.00	1 1/2"

### WID Series with 2" Insulation Thickness

"B" x "A"	SHIPPING WEIGHT (Lbs.)	LATCHES	GALVANIZED MODEL #	GALVANIZED LIST PRICE	STAINLESS MODEL #	STAINLESS LIST PRICE	INSULATION THICKNESS
12" x 12"	19.00	1	WID2.0-1212	\$264.00	WIDSS2.0-1212	\$791.00	2"
12" x 24"	27.00	2	WID2.0-1224	\$342.00	WIDSS2.0-1224	\$1,027.00	2"
14" x 14"	21.00	1	WID2.0-1414	\$285.00	WIDSS2.0-1414	\$856.00	2"
16" x 16"	22.00	1	WID2.0-1616	\$314.00	WIDSS2.0-1616	\$941.00	2"
16" x 20"	24.00	1	WID2.0-1620	\$342.00	WIDSS2.0-1620	\$1,028.00	2"
16" x 36"	38.00	1	WID2.0-1636	\$612.00	WIDSS2.0-1636	\$1,530.00	2"
18" x 18"	24.00	1	WID2.0-1818	\$342.00	WIDSS2.0-1818	\$1,028.00	2"
20" x 30"	37.00	2	WID2.0-2030	\$612.00	WIDSS2.0-2030	\$1,530.00	2"
22" x 30"	37.00	2	WID2.0-2230	\$612.00	WIDSS2.0-2230	\$1,530.00	2"
22" x 36"	44.00	2	WID2.0-2236	\$648.00	WIDSS2.0-2236	\$1,620.00	2"
24" x 24"	34.00	1	WID2.0-2424	\$483.00	WIDSS2.0-2424	\$1,208.00	2"
24" x 36"	48.00	2	WID2.0-2436	\$725.00	WIDSS2.0-2436	\$1,589.00	2"
30" x 30"	45.00	2	WID2.0-3030	\$706.00	WIDSS2.0-3030	\$1,583.00	2"
30" x 60"	100.00	2	WID2.0-3060	\$1,080.00	WIDSS2.0-3060	\$2,160.00	2"
36" x 36"	60.00	2	WID2.0-3636	\$923.00	WIDSS2.0-3636	\$1,829.00	2"
36" x 48"	100.00	2	WID2.0-3648	\$1,074.00	WIDSS2.0-3648	\$1,970.00	2"

Design and dimensions are subject to modification. Prices do not include applicable taxes. Visit [www.mifab.com](http://www.mifab.com) for the most recent product information.

MIFAB, Inc.

sales@mifab.com

Toll Free 1-800-387-3880

Fax 1-773-341-3049

[www.mifab.com](http://www.mifab.com)

All sales subject to MIFAB's Terms and Warranties. Please refer to inside front cover.



**SERIES EA ECONOMY ACCESS DOOR**

**DESCRIPTION**

The MIFAB EA is a multi-purpose access door. It is designed for flush installation into drywall, block or tile walls and ceilings. Frame features rounded safety corners, concealed hinge, flush with frame fit, and a 3/8" turn back in the door panel for extra rigidity and safety.

**SPECIFICATIONS**

**Material:** EA Series is 20 gauge satin coat steel door and 20 gauge satin coat steel frame.

**Finish:** EA doors are unfinished satin coat steel with no primer.

**Door:** Flush to frame. Turned back around edges for extra rigidity.

**Frame:** The frame has pre-punched mounting holes for simple installation and fold away tabs for drywall installation.

**Hinge:** Concealed pivot pins.

**Latch:** Standard - Flush mounted, screwdriver operated cam.

WALL OPENING	SHIPPING WEIGHT (Lbs.)	LATCHES	MODEL # MILD STEEL	LIST PRICE MILD STEEL
6 3/8" X 6 3/8"	1.50	1	EA0606	\$9.00
8 3/8" X 8 3/8"	1.90	1	EA0808	\$9.50
10 3/8" X 10 3/8"	2.60	1	EA1010	\$12.00
12 3/8" X 12 3/8"	3.30	1	EA1212	\$13.00
14 3/8" X 14 3/8"	4.20	1	EA1414	\$21.00
16 3/8" X 16 3/8"	5.10	1	EA1616	\$23.00
18 3/8" X 18 3/8"	6.20	1	EA1818	\$26.50
24 3/8" X 24 3/8"	9.80	1	EA2424	\$45.00

# CROSS REFERENCE

Acudor to MIFAB		
Acudor	MIFAB	Page #
ADWT	Contact MIFAB	-
AF-VP	MI-FVP	10
AP-5010	CAD-PL	3
ARVB	MI-VB	11
ASVB	MI-VB-SM	11
AS-9000	Contact MIFAB	-
AT-5020	CAD-FR	5
BP58	Contact MIFAB	-
DW-5015	CAD-DW	3
DW-5040	MDW	2
DW-5058	CAD	2
ED-2002	EA	15
FA-150, FA-300	FHA, FHG	12
FA-H20	FHA, FHG	12
FB-5060	MFRU	7
FB-5060-DW	MPFR-DW	8
FC-300	Contact MIFAB	-
FC-H20	Contact MIFAB	-
FD-8060	Contact MIFAB	-
FRFD	Contact MIFAB	-
FT-8040	Contact MIFAB	-
FT-8050	Contact MIFAB	-
FT-8060	Contact MIFAB	-
FT-8080	Contact MIFAB	-
FT-8080-1	Contact MIFAB	-
FW-5050	MPFR	6
FW-5050-DW	MPFR-DW	8
FW-5050-UP	Contact MIFAB	-
FW-5060-TD	Contact MIFAB	-
G3000, A3000	RHA, RHG	13
GFRG	Contact MIFAB	-
HD-5070	UD	5
LT-4000	Contact MIFAB	-
MS-7000	MI-SAD	9
PA-3000	PA	12
PS-5030	CAD-FL-PL	4
SD-6000	MI-SADH	9
SF-2000	MI-SF	10
UF-5000	UA	1
UF-5500	UA	1
WD-8000	WID	14

Babcock - Davis to MIFAB		
Babcock - Davis	MIFAB	Page #
B-DTK	Contact MIFAB	-
B-FDDH	Contact MIFAB	-
B-FDDP	Contact MIFAB	-
B-FDE	FHG	12
B-FDN	FHA	12
B-FDR	Contact MIFAB	-
B-FRD	Contact MIFAB	-
B-FRV	Contact MIFAB	-
B-HS	MI-SADH	9
B-IP	MPFR-PL	6
B-IT	MPFR	6
B-IW	MPFR-DW	8
B-LW	UA	1
B-MP	MI-SAD-PL	9
B-MT	MI-SAD	9
B-MW	MI-SAD-DW	9
B-NP	CAD-FL-PL	4
B-NT	UA	1
B-NW	MDW	2
B-PL	PA	12
B-RA	CAD	2
B-RHA, RHG	RHA, RHG	13
B-RHE	Contact MIFAB	-
B-RHL	Contact MIFAB	-
B-RHS	Contact MIFAB	-
B-RV	Contact MIFAB	-
B-RW	CAD-DW	3
B-RP	CAD-PL	3
B-ST	MPFR-C	6
B-SV	MPFR-C-DW	8
B-TS	MI-SADH	9
B-UP	MFRU-PL	7
B-UT	MFRU	7
B-UW	MFRU-DW	7
B-XT	WID	14

Cendrex to MIFAB		
Cendrex	MIFAB	Page #
AHA	CAD	2
AHA-GYP	CAD-DW	3
AHA-PLY	CAD-FL	4
AHD	UA	1
AHD-GYP	MDW	2
AHD-PLY	CAD-FL-PL	4
BTA, BTV	MI-VB	11

CTR	MI-SF	10
DRD	Contact MIFAB	-
GRG	Contact MIFAB	-
LHD	Contact MIFAB	-
LHD-180	Contact MIFAB	-
MDS	MI-SAD	9
PAL	Contact MIFAB	-
PFI	MPFR	6
PFI-GYP	MPFR-DW	8
PFI-PLY	MPFR-PL	6
PFN	MFRU	7
PFN-GYP	MFRU-DW	8
PFN-PLY	MFRU-PL	7
PFU	Contact MIFAB	-
PHS	MI-SADH	9
PPA	FHA	12
PPA-RE	Contact MIFAB	-
RMD	MI-SF	10
RPL	PA	12
SFM	MI-SF	10
TRH	RHG	13

Eimdor to MIFAB		
Eimdor	MIFAB	Page #
AP	CAD-PL	3
AT	CAD	2
CFR	CAD-FR	5
DT	UD	5
DW	UA	1
DWB	MDW	2
ED	WID	14
FR	MFRU	7
FRC	MPFR	6
ML	CAD-FL-PL	4
PW	CAD-FL	4
RAH	RHA, RHG	13
SF	MI-SF	10
SLA	MI-SADH	9
SLK	MI-SAD	9
S009 / S010	MI-FVP	10
VB	MI-VB	11
WSR	Contact MIFAB	-

JL to MIFAB		
JL	MIFAB	Page #
AAF	Contact MIFAB	-
AGF	Contact MIFAB	-
ATM	Contact MIFAB	-
CP	CAD-PL	3
CT	CAD	2
CTWB	CAD-DW	3
FD	MPFR	6
FDPW	MPFR-DW	8
FDSS	MPFR-SS	6
FDWB	MPFR-DW	8
FRC	CAD-FR	5
HGFD	MPFR	6
HSP	MI-SADH	9
PW	CAD-FL	4
PWE	CAD-FL-PL	4
RHA, RHG	RHA, RHG	13
SMT	MI-SF	10
SP	MI-SAD	9
TM	UA	1
TMS	UA-SS	1
WB	MDW	2
XPA	WID	14
XPA-PWE	WID	14
XPA-PWE	WID	14
XPS	WID	14

Karp to MIFAB		
Karp	MIFAB	Page #
DSB-123SD	MI-SADH	9
DSB-123SD-	MI-SAD	9
MS		
DSB-214SM	MI-SF	10
DSC-210	CAD	2
DSC-210-PL	CAD-PL	3
DSC-214M	UA	1
DSC-214-PL	CAD-FL-PL	4
HA	PA	12
KAFA	Contact MIFAB	-
KATR	CAD-FR	5
KDW	CAD-FL-PL	4
KFD-HD	FHA, FHG	12
KFD-SD	FHA, FHG	12
KHD	UD	5
KRHA	RHA	13
KRHG	RHG	13
KRP-150FR	MPFR	6
KRP-250FR	MFRU	7
KRP-350FR	MPFR-DW	8
KRP-450FR	MPFR-DW	7

KRVB	MI-VB-SM	11
KSMB	MI-VB	11
KSTC	Contact MIFAB	-
KSTDW	Contact MIFAB	-
KSTE	Contact MIFAB	-
MC	UA	1
MX	WID	14
PF	UA	1
RDWPD	Contact MIFAB	-
RDW	CAD-DW	3

Larsen's to MIFAB		
Larsen's	MIFAB	Page #
L-APC	CAD-PL	3
L-CPA	CAD	2
L-DPFB	MPFR-C	6
L-DPH	MI-SADH	9
L-DPM	MI-SAD	9
L-DWC	MDW	2
L-DWR	CAD-DW	3
L-FRAP	MPFR	6
L-LCP	EA	15
L-MPG	UA	1
L-MPSS	UA-SS	1
L-PSW	CAD-FL-PL	4
L-LT	WID	14
VC	MI-VB	11

Milcor to MIFAB		
Milcor	MIFAB	Page #
AP (3206-)	CAD-PL	3
AT (3205-)	CAD	2
ATR (3204-)	CAD-FR	5
CF	Contact MIFAB	-
CT	Contact MIFAB	-
DW (3203-)	MDW	2
DWR	CAD-DW	3
FA, FC, FM	FHA, FHG	12
HS (3211-)	MI-SADH	9
K (3200-)	CAD-FL-PL	4
M (3202-)	UA	1
M-1	RHG	13
ME (3215-)	UA	1
NIFR (3219-)	MFRU	7
RBS-1	RHG	13
RBS-1	RHG	13
RC	RHA	13
RCS-1	RHA	13
RD-1	RHA	13
UFR (3218-)	MPFR	6
3211	MI-SADH	9
3601	MI-VB	11

Nystrom to MIFAB		
Nystrom	MIFAB	Page #
DTK	Contact MIFAB	-
FDDH	Contact MIFAB	-
FDDP	Contact MIFAB	-
FDE	FHG	12
FDN	FHA	12
FDR	Contact MIFAB	-
FRD	Contact MIFAB	-
FRV	Contact MIFAB	-
HS	MI-SADH	9
IP	MPFR-PL	6
IT	MPFR	6
IW	MPFR-DW	8
LW	UA	1
MP	MI-SAD-PL	9
MT	MI-SAD	9
MW	MI-SAD-DW	9
NP	CAD-FL-PL	4
NT	UA	1
NW	MDW	2
PL	PA	12
RA	CAD	2
RHA, RHG	RHA, RHG	13
RHE	Contact MIFAB	-
RHL	Contact MIFAB	-
RHS	Contact MIFAB	-
RV	Contact MIFAB	-
RW	CAD-DW	3
RP	CAD-PL	3
ST	MPFR-C	6
SW	MPFR-C-DW	8
TS	MI-SADH	9
UP	MFRU-PL	7
UT	MFRU	7
UW	MFRU-DW	7
XT	WID	14

PPP to MIFAB		
PPP	MIFAB	Page #
D-88PC	UA0808	1
D-88SS	UASS0808	1
D-814PC	UA0814	1
D-814SS	UASS0814	1
D-1212PC	UA1212	1
D-1212SS	UASS1212	1
D-1416PC	UA1416	1
D-1416SS	UASS1416	1
D-1620PC	UA1620	1
D-1620SS	UASS1620	1
D-2030PC	UA2030	1
D-2030SS	UASS2030	1
D-2424PC	UA2424	1
D-2424SS	UASS2424	1
F-88PC	MFRU0808	7
F-88SS	MFRUSS0808	7
F-814PC	MFRU0814	7
F-814SS	MFRUSS0814	7
F-1212PC	MFRU1212	7
F-1212SS	MFRUSS1212	7
F-1416PC	MFRU1416	7
F-1416SS	MFRUSS1416	7
F-1620PC	MFRU1620	7
F-1620SS	MFRUSS1620	7
F-2030PC	MFRU2030	7
F-2030SS	MFRUSS2030	7
F-2424PC	MFRU2424	7
F-2424SS	MFRUSS2424	7

Williams to MIFAB		
Williams	MIFAB	Page #
WB-AHD-1400	UD	5
WB-AL-4000	Contact MIFAB	-
WB-AP-510	CAD-PL	3
WB-AT-600	CAD	2
WB-ATR-610	CAD-FR	5
WB-BASIC-300	UA	1
WB-DW-400	MDW	2
WB-EXT-1300	WID	14
WB-FR-400	MPFR	6
WB-FR-DW-820	MPFR-DW	8
WB-FR-PL-830	MPFR-PL	6
WB-FR-PL-840	MPFR-FL	6
WB-FR-PRE-700	MFRU	7
WB-FRB-900	MFRU	7
WB-FRC-50	MPFR	6
WB-FRU-810	MPFR	6
WB-GP-100	UA	1
WB-GY-3000	Contact MIFAB	-
WB-HG-SEC-1100	MI-SADH	9
WB-MAP	PA	12
WB-MD-SEC-1000	MI-SAD	9
WB-PL-500	CAD-FL-PL	4
WB-RP-110	MI-SF	10
WB-RDW-410	CAD-DW	3
WB-ROOF-HATCH	RHG	13
WB-SF-VC-FR	MI-VB	11
WB-SF-VC-S	MI-VB-SM	11
WB-SMP-120	MI-SF	10
WB-TB-1200	UA	1
WB-TYPE J + JD	FHG	12
WB-TYPE K + KD	FHA	12
WB-TYPE S + E	RHA	13
WB-TYPE T + TD	Contact MIFAB	-
WB-TYPE TER + TRD	Contact MIFAB	-
WB-TYPE Q	FHG	12
WB-UAD-200	UA	1
WB-WIN-1700	Contact MIFAB	-

Design and dimensions are subject to modification. Prices do not include applicable taxes. Visit [www.mifab.com](http://www.mifab.com) for the most recent product information.

## NOTES

Design and dimensions are subject to modification. Prices do not include applicable taxes. Visit [www.mifab.com](http://www.mifab.com) for the most recent product information.

**MIFAB, Inc.**

**sales@mifab.com**

**Toll Free 1-800-387-3880**

**Fax 1-773-341-3049**

[www.mifab.com](http://www.mifab.com)

All sales subject to MIFAB's Terms and Warranties. Please refer to inside front cover.



Custom design & co-design capabilities also available.



**LIT-051**