



**Conserving plant diversity
for future generations**

www.farmerspride.eu

@PGRInSitu | #EUfarmerspride



Funded by the Horizon 2020
Framework Programme
of the European Union

Conserving crop wild relatives in the Natura 2000 network

A briefing document

UNIVERSITY OF
BIRMINGHAM



Universidad
Rey Juan Carlos

Contents

Introduction	3
How can CWR be conserved in the Natura 2000 network?	4
Table 1. Priority CWR taxa included in Annexes II and IV of the Habitats Directive.....	6
Table 2. Numbers of European priority CWR taxa characteristic of habitat types listed in Annex I of the Habitats Directive.....	10
Table 3. European priority CWR reported to be subject to active <i>in situ</i> conservation interventions within the Natura 2000 network	12
Annex 1. European priority CWR characteristic of habitat types in Natura 2000.....	13
Table 4. European priority CWR taxa characteristic of the habitat types listed in Annex I of the Habitats Directive.....	13
Annex 2. European priority CWR	23
Table 5. European priority CWR taxa	23

Introduction

EU member countries are committed to meeting their obligations under international policies and legislative instruments relating to the conservation and sustainable use of **plant genetic resources for food and agriculture** (PGRFA), including **crop wild relatives** (CWR)—wild plant species related to crops that are sources of traits for the development of new, improved varieties. Plant breeders have used genes from CWR to improve crops since the 1970s—therefore, the use of CWR has contributed substantially to **food security** and to the global **agricultural economy**.

The broad range of habitats in which CWR occur, their adaptation to a wide range of local environmental conditions, and the fact that they have not passed through the genetic bottleneck of domestication, means they are a **vital reservoir of genetic diversity for crop improvement**, particularly in the race to **combat the impacts of climate change** on agricultural production systems. CWR are acknowledged worldwide by the plant breeding research community and seed sector as a fundamental resource for providing the breadth of diversity needed to support food and nutrition security.

Europe has a wealth of native and endemic diversity of **wild species related to crops of regional and global socio-economic importance**. Examples include the native wild relatives of oat, sugar beet, cabbage, carrot, asparagus, lettuce, apple, raspberry and blackberry, as well as animal feed crops such as annual meadow grass, perennial rye grass, and white clover. A recent study indicated that **southern Europe is part of a global premier hotspot** in terms of its **richness of species related to economically important crops**.

Since 2002, PGRFA stakeholders have been working together through a series of EU-funded projects to develop **tools and techniques to plan and implement CWR conservation actions**. Although, their complementary conservation (i.e., *in situ* and *ex situ*) ultimately requires an integrated response from both the agriculture and environment communities, the implementation of CWR conservation *in situ* depends on the involvement of the **environment ministries** of the EU member countries which are already responsible for conserving wild plant populations.

Securing CWR genetic diversity in the Natura 2000 network offers an opportunity to conserve Europe's CWR for perpetuity, **adding novel and significant value** to the network as an infrastructure to underpin food security and the agricultural economy. This document provides a summary of the ways in which protected area managers within the Natura 2000 network could begin to address the conservation of some of Europe's valuable CWR species.

How can CWR be conserved in the Natura 2000 network?

The Natura 2000 network was established to implement the EU Habitats and Birds Directives and is not open for amendment (i.e., to add new species or habitat types to the annexes). However, because CWR are like any other wild plant species (but have an additional value as gene donors for crop improvement), **some species that are already protected in the network are CWR**. Therefore, the identification of these species is an obvious and pragmatic starting point for addressing their conservation *in situ* across Europe. There are **five ways of achieving this**:

1. Identify CWR species listed in the annexes of the Habitats Directive (Table 1).
2. Undertake geographic information system (GIS) analyses using CWR population occurrence (point) data and protected area (spatial) data to identify CWR species occurrence in the Natura 2000 network (Figs. 1, 2 and 3).
3. Identify CWR species that are denoted as characteristic of the natural habitat types of community interest whose conservation requires the designation of special areas of conservation (SACs)¹ (Table 2; Table 4, Annex 1).
4. Undertake a survey to identify specific *in situ* conservation initiatives targeting CWR (Table 3).
5. Cross-check protected area inventories (where they exist) with an inventory of CWR taxa.

Analyses 1–3 have been carried out by collaborators in the EU-funded Farmer's Pride² project for 863 **CWR taxa** (species and sub-specific taxa)³, which have been **prioritized for conservation action** in the region. This is due to their potential value for the improvement of crops of particularly **high value for food security and the agricultural economy** in Europe and/or other world regions ('European priority CWR' – Table 5, Annex 2). For example, the **European priority CWR taxa included in the Habitats Directive Annexes II and IV** (Table 1) are **important PGRFA with potential for the improvement of a range of crops of economic significance**, including sugarbeet, rape, lettuce, pear, eggplant, cabbage, turnip, mustard, and other brassica crops. Under the Directive, these taxa are already considered to be of 'community interest' and in need of strict protection, and their conservation requires the designation of SACs. **Their recognition as important PGRFA may provide additional justification for their conservation and enhance the value of the Natura 2000 network.**

Important to note here is that analysis 2 has also been undertaken at national level in **several countries that have developed national CWR conservation strategies**—for example, in Spain (Fig. 3). However, because many countries in the region have not yet developed national CWR conservation strategies, the regional level analysis serves to **highlight the most important**

¹ According to the Interpretation Manual of European Union Habitats.

² www.farmerspride.eu

³ These taxa occur in 485 species.

CWR genetic resources for the region as a whole, and to highlight optimum populations to target for conservation action.

A survey to identify specific *in situ* conservation initiatives targeting CWR (analysis 4) has also been undertaken in the context of the Farmer's Pride project, and the results show that in most of the countries for which information was provided, some level of ***in situ* conservation of CWR is being carried out within protected areas of the Natura 2000 network**. Table 3 lists examples of European priority CWR reported to be subject to active *in situ* conservation interventions within the Natura 2000 network.

Analysis 5 could be carried out through a separate initiative to communicate with protected area managers interested in CWR conservation, perhaps initially via the Eurosite network to assess the feasibility of this approach. Since most botanical inventories of the Natura 2000 network have not been uploaded to global biodiversity databases such as the Global Biodiversity Information Facility (GBIF – www.gbif.org/), they would significantly improve the knowledge on the occurrence of CWR in the network.

Results of analyses 1–4 are summarized in the tables and figures that follow. A caveat regarding the results presented is that **many of the identified CWR taxa may be passively conserved in the Natura 2000 network and protected area managers may be unaware of their presence**. For example, they may occur in a protected habitat type that is managed to maintain the habitat—however, the populations of the taxa themselves may not be the target of conservation management. Nonetheless, for those CWR that are **essential components of these habitats** (i.e., ‘characteristic species’), **actions taken to conserve the habitats are likely to provide some protection of the CWR populations they contain**. Further, as already noted, the identification of CWR that are under some form of protection and conservation management within the Natura 2000 network is a pragmatic starting point for addressing their conservation *in situ* in Europe.

In conclusion, **the Natura 2000 network holds immense potential** to provide effective *in situ* conservation of the CWR populations they contain **with minimal effort and investment, providing a priceless contribution to food security** in Europe and other world regions. CWR included in Annexes II and IV of the Habitats Directive and those that are characteristic species of the habitats listed in Annex I, are already receiving some protection—all they need in terms of data recording is **recognition that they constitute valuable PGRFA**. There are many other priority CWR species that are also found in the protected areas of the Natura 2000 network. Their conservation could be significantly improved by simply identifying them in the botanical inventories of the protected areas and labelling them as valuable PGRFA that protected areas managers could take into account when designing and implementing their management plans.

For questions about this document or for further information, please contact Prof. José Iriondo (jose.iriondo@urjc.es), Dr. Shelagh Kell (s.kell@bham.ac.uk), and Prof. Nigel Maxted (n.maxted@bham.ac.uk).

Table 1. Priority CWR taxa⁴ included in Annexes II and IV⁵ of the Habitats Directive (no priority CWR are listed in Annex V) * denotes priority species⁶

Scientific name	Red List Category (Europe) ⁷
<i>Beta patula</i> Aiton	CR
<i>Brassica hilarionis</i> Post	EN
<i>Brassica insularis</i> Moris	NT
<i>Brassica macrocarpa</i> Guss.*	CR
<i>Brassica repanda</i> subsp. <i>glabrescens</i> (Poldini) Gómez Campo [syn. <i>B. glabrescens</i> Poldini]	VU
<i>Coincya monensis</i> subsp. <i>cheiranthos</i> (Vill.) Aedo, Leadley & Muñoz Garm [syn. <i>Rhynchosinapis erucastrum</i> subsp. <i>cintrana</i> (Cout.) Franco & P. Silva]	NE
<i>Crambe arborea</i> H. Christ*	VU
<i>Crambe laevigata</i> DC. ex H. Christ	EN
<i>Crambe sventenii</i> B. Pett. ex Bramwell & Sundell*	CR
<i>Diplotaxis siettiana</i> Maire*	CR
<i>Diplotaxis sijfolia</i> subsp. <i>vicentina</i> (Samp.) Mart.-Laborde [syn. <i>D. vicentina</i> (Welw. ex Samp.) Rothm. ⁸]	CR
<i>Lactuca watsoniana</i> Trel.*	EN
<i>Phoenix theophrasti</i> Greuter	NE
<i>Prunus lusitanica</i> subsp. <i>azorica</i> (Mouill.) Franco	NE
<i>Pyrus magyarica</i> Terpó*	CR
<i>Sinapidendron rupestre</i> Lowe	CR
<i>Solanum lidii</i> Sunding*	CR

⁴ Taxonomy is according to Euro+Med PlantBase – <http://www.emplantbase.org/home.html>

⁵ Annex II lists plant (and animal) species of community interest, whose conservation requires the designation of special areas of conservation. Annex IV lists plant (and animal) species of community interest in need of strict protection.

⁶ Species which the Community has particular responsibility in view of the proportion of their natural range which falls within the territory.

⁷ European Red List of Vascular Plants –

ec.europa.eu/environment/nature/conservation/species/redlist/downloads/European_vascular_plants.pdf. CR – Critically Endangered; EN – Endangered; VU – Vulnerable; NT – Near Threatened; NE – Not Evaluated.

⁸ Listed in the Habitats Directive as *Diplotaxis vicentina* (P. Cout.) Rothm.

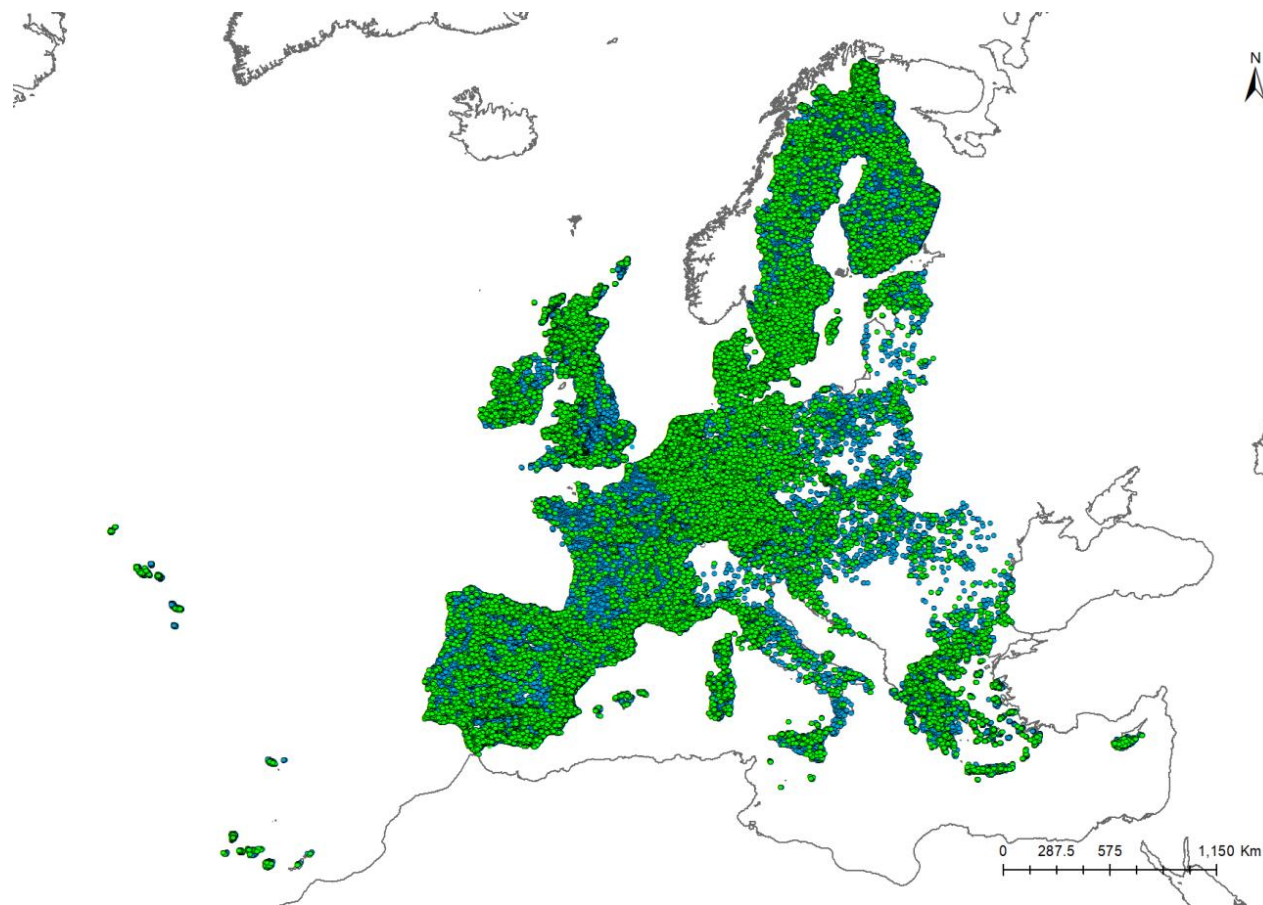


Figure 1. Populations of European priority CWR taxa in the EU and the UK, showing the occurrences of taxa in the Natura 2000 network in green⁹

⁹ Results are based on population data available from GBIF⁹ and Genesys⁹ for 568 European priority CWR taxa (66% of the total) for which high quality georeferenced data are available from these sources. Further datasets are being sought to fill in the gaps as far as possible – particularly for rare and/or threatened taxa.

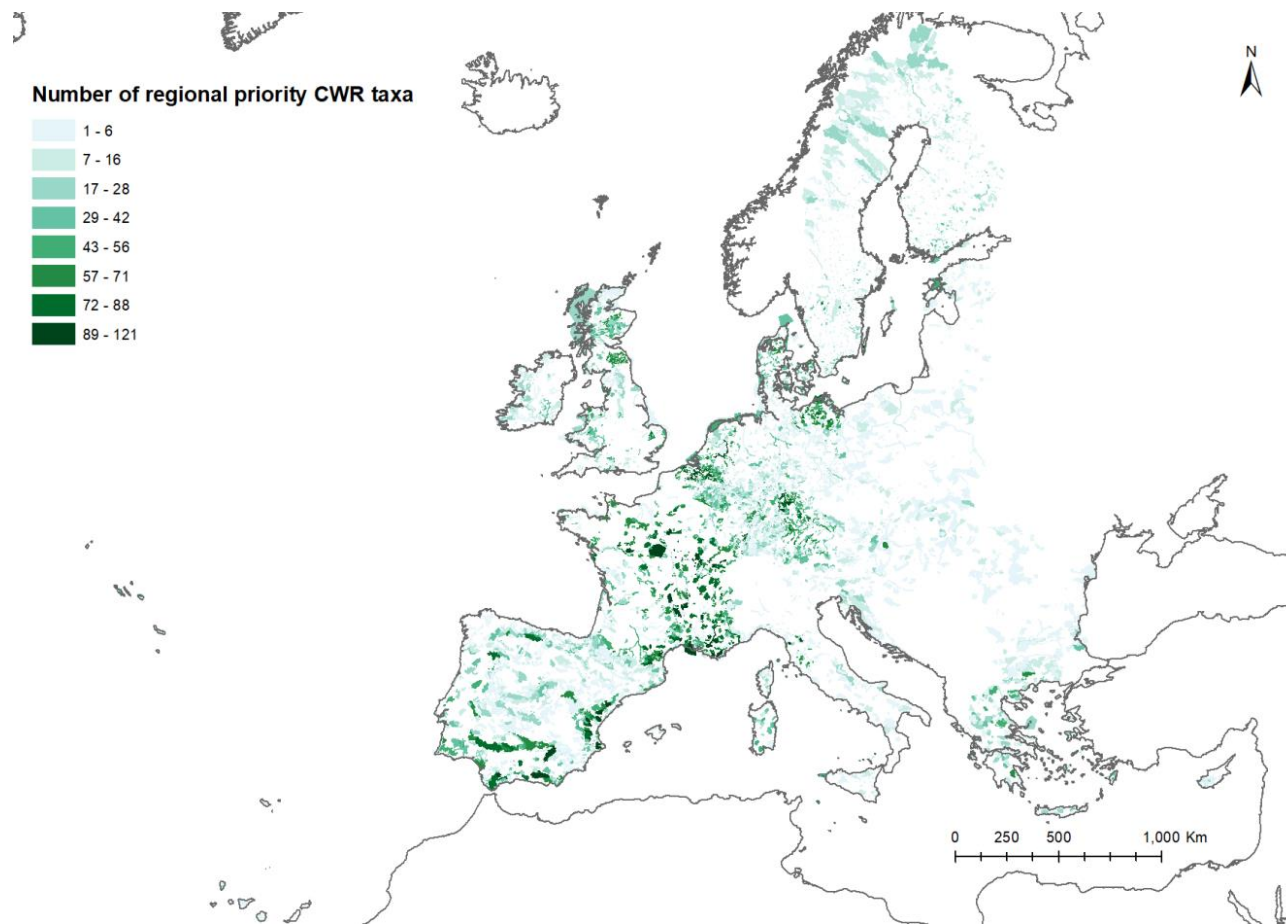


Figure 2. European priority CWR taxon richness in the Natura 2000 network¹⁰

¹⁰ Results are based on CWR population data available from GBIF¹⁰ and Genesys¹⁰ and are therefore biased towards those countries for which data are available from these sources. Further datasets are being sought to fill in the gaps as far as possible.

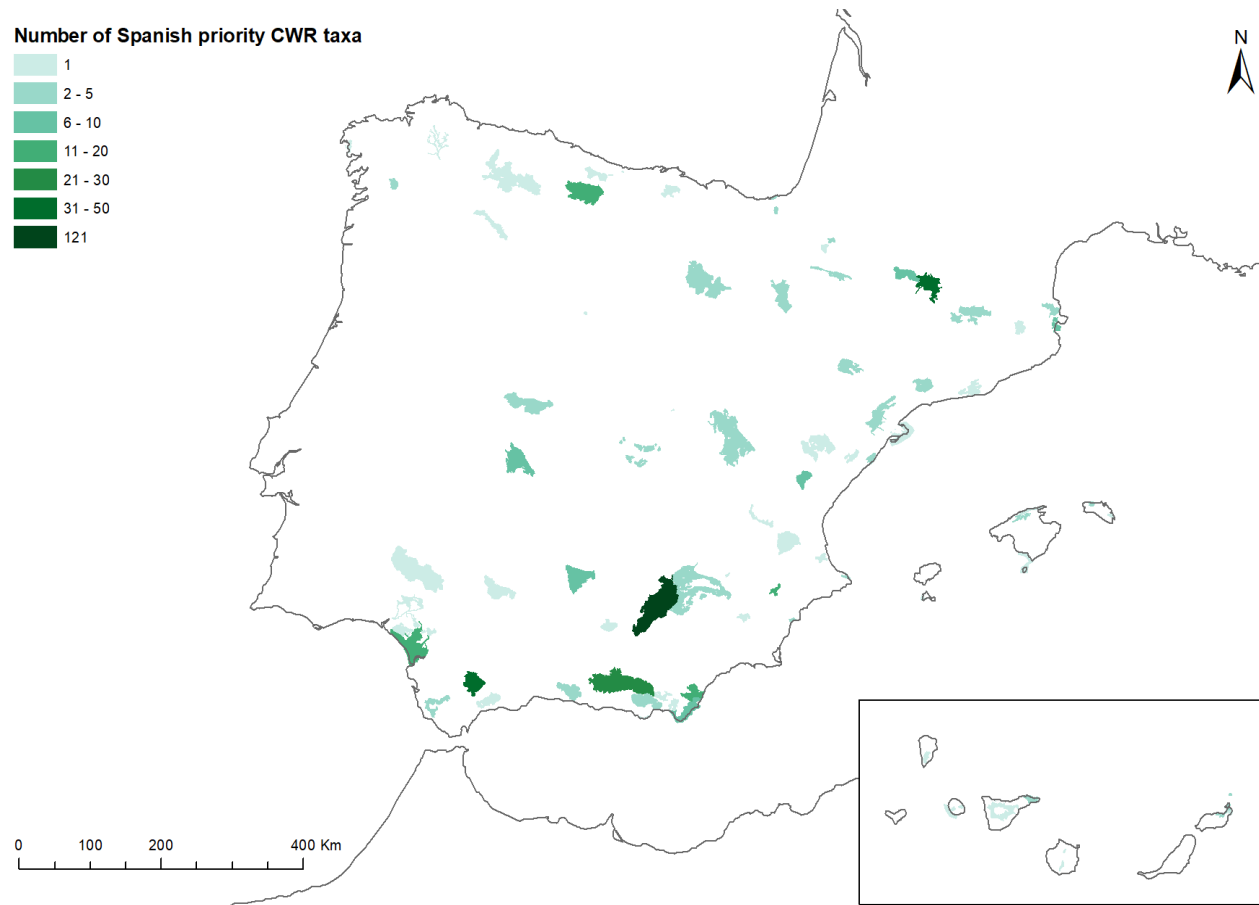


Figure 3. Spanish priority CWR taxon richness in the Natura 2000 network¹¹

¹¹ Rubio Teso, M.L., Iriondo, J.M., Parra, M. and Torres, E. (2014) *National Strategy for the Conservation of Crop Wild Relatives of Spain*. PGR Secure: Novel characterization of crop wild relative and landrace resources as a basis for improved crop breeding. <https://tinyurl.com/snzmljr>

Table 2. Numbers of European priority CWR taxa characteristic of habitat types listed in Annex I of the Habitats Directive¹²

Habitat category [Total no. of priority CWR taxa ¹³]	Habitat subcategory	No. of priority CWR taxa¹⁴
FOREST [34]	– Forests of temperate Europe	17
	– Mediterranean sclerophyllous forests	11
	– Mediterranean deciduous forests	5
	– Forests of Boreal Europe	4
	– Mediterranean & Macaronesian mountainous coniferous forests	3
NATURAL & SEMI-NATURAL GRASSLAND FORMATIONS [28]	– Mesophile grasslands	12
	– Semi-natural dry grasslands and scrubland facies	9
	– Semi-natural tall-herb humid meadows	6
	– Natural grasslands	5
COASTAL & HALOPHYTIC HABITATS [20]	– Sea cliffs & shingle or stony beaches	5
	– Boreal Baltic archipelago, coastal & landupheaval areas	5
	– Mediterranean & thermo-Atlantic saltmarshes & salt meadows	5
	– Atlantic & continental salt marshes & salt meadows	4
	– Salt & gypsum inland steppes	4

¹² Data extracted from the Interpretation Manual of European Union Habitats, EUR 28, April 2013, https://ec.europa.eu/environment/nature/legislation/habitatsdirective/docs/Int_Manual_EU28.pdf. Most entries in the Manual are at species level. Only four European priority CWR taxa are listed in the Manual at subspecific level (see Annex 1, Table 4). The total priority CWR taxa included is 104 (in 84 species).

¹³ The total number of priority CWR taxa characteristic of each habitat category. Includes species and sub-specific taxa.

¹⁴ The total number of priority CWR taxa characteristic of each habitat subcategory. Includes species and sub-specific taxa.

Table 2. Numbers of European priority CWR taxa characteristic of habitat types listed in Annex I of the Habitats Directive¹²

Habitat category [Total no. of priority CWR taxa ¹³]	Habitat subcategory	No. of priority CWR taxa¹⁴
COASTAL SAND DUNES & INLAND DUNES [8]	– Sea dunes of the Atlantic, North Sea & Baltic coasts	7
	– Inland dunes, old & decalcified	1
SCLEROPHYLLOUS SCRUB (MATORRAL) [5]	– Sub-Mediterranean & temperate scrub	2
	– Mediterranean arborescent matorral	2
	– Thermo-Mediterranean & pre-steppe brush	1
	– Phrygana	1
TEMPERATE HEATH & SCRUB [5]	– Not applicable	–
ROCKY HABITATS & CAVES [3]	– Rocky slopes with chasmophytic vegetation	3
RAISED BOGS & MIRES & FENS [1]	– Sphagnum acid bogs	1
FRESHWATER HABITATS [1]	– Running water	1

Table 3. European priority CWR reported to be subject to active *in situ* conservation interventions within the Natura 2000 network and the crops to which they are related¹⁵ * = listed in the Habitats Directive Annexes II and IV

Scientific name	Related crop
<i>Beta vulgaris</i> subsp. <i>maritima</i> (L.) Arcang.	Sugarbeet
<i>Dactylis glomerata</i> L.	Cocksfoot
<i>Daucus carota</i> L.	Carrot
<i>D. carota</i> subsp. <i>gummifer</i> (Syme) Hook. f.	Carrot
<i>Festuca rubra</i> L.	Red fescue
<i>Ochlopoa annua</i> (L.) H. Scholz	Annual meadowgrass
<i>Prunus lusitanica</i> L. subsp. <i>lusitanica</i> *	Stonefruits ¹⁶
<i>P. webbii</i> (Spach) Vierh.	Almond, peach
<i>Trifolium pratense</i> L.	Red clover
<i>T. repens</i> L.	White clover
<i>T. repens</i> subsp. <i>prostratum</i> Nyman	White clover

¹⁵ Results of 58 responses from 11 EU countries (including the UK) to an online survey conducted in the context of the Farmer's Pride project.

¹⁶ A range of fruit crops, such as apricot, cherry, nectarine, peach, pear and plum.

Annex 1. European priority CWR characteristic of habitat types in the Natura 2000 network

Table 4. European priority CWR taxa characteristic of the habitat types listed in Annex I of the Habitats Directive

Habitat category	Habitat subcategory	Habitat code	Habitat type *denotes priority habitat types	European priority CWR taxa characteristic of the habitat [name in Interpretation Manual]
COASTAL AND HALOPHYTIC HABITATS	Sea cliffs and shingle or stony beaches	1220	Perennial vegetation of stony banks	<i>Leymus arenarius</i> (L.) Hochst.
		1230	Vegetated sea cliffs of the Atlantic and Baltic coasts	<i>Brassica oleracea</i> L. <i>Festuca rubra</i> L. subsp. <i>pruinosa</i> (Hack.) Piper
		1250	Vegetated sea cliffs with endemic flora of the Macaronesian coasts	<i>Daucus carota</i> L. subsp. <i>azoricus</i> Franco [<i>Daucus carota</i> subsp. <i>azorica</i>] <i>Lotus subbiflorus</i> Lag.
	Atlantic and continental salt marshes and salt meadows	1310	Salicornia and other annuals colonizing mud and sand	<i>Hordeum marinum</i> Huds.
		1330	Atlantic salt meadows (<i>Glauco-Puccinellietalia maritimae</i>)	<i>Agrostis stolonifera</i> L. <i>Beta vulgaris</i> L. <i>Festuca rubra</i> L.
	Mediterranean and thermo-Atlantic saltmarshes and salt meadows	1410	Mediterranean salt meadows (<i>Juncetalia maritimi</i>)	<i>Hordeum bulbosum</i> subsp. <i>nodosum</i> (L.) B. R. Baum [<i>Hordeum nodosum</i>] <i>H. marinum</i> Huds. [<i>Hordeum maritimum</i>] <i>Trifolium michelianum</i> Savi
1430		Halo-nitrophilous scrubs (<i>Pegano-Salsoletea</i>)	<i>Atriplex halimus</i> L. <i>Salsola vermiculata</i> L.	
COASTAL AND HALOPHYTIC				

Table 4. European priority CWR taxa characteristic of the habitat types listed in Annex I of the Habitats Directive

Habitat category	Habitat subcategory	Habitat code	Habitat type *denotes priority habitat types	European priority CWR taxa characteristic of the habitat [name in Interpretation Manual]
HABITATS	Salt and gypsum inland steppes	1530	Pannonic salt steppes and salt marshes	<i>Cynodon dactylon</i> (L.) Pers. <i>Elytrigia elongata</i> (Host) Nevski [<i>Agropyron elongatum</i>] <i>Trifolium fragiferum</i> L. <i>Schedonorus arundinaceus</i> subsp. <i>orientalis</i> (Hack.) H. Scholz & Valdés [<i>Festuca arundinacea</i> subsp. <i>orientalis</i>]
	Boreal Baltic archipelago, coastal and landupheaval areas	1610	Baltic esker islands with sandy, rocky and shingle beach vegetation and sublittoral vegetation	<i>Leymus arenarius</i> (L.) Hochst.
		1620	Boreal Baltic islets and small islands	<i>Agrostis stolonifera</i> L. <i>Allium schoenoprasum</i> L.
		1630	*Boreal Baltic coastal meadows	<i>Agrostis stolonifera</i> L. <i>Festuca rubra</i> L.
		1640	Boreal Baltic sandy beaches with perennial vegetation	<i>Elytrigia juncea</i> subsp. <i>boreoatlantica</i> (Simonet & Guin.) Hyl. <i>Leymus arenarius</i> (L.) Hochst.
COASTAL SAND DUNES AND INLAND DUNES	Sea dunes of the Atlantic, North Sea and Baltic coasts	2110	Embryonic shifting dunes	<i>Leymus arenarius</i> (L.) Hochst. <i>Medicago marina</i> L.
		2120	Shifting dunes along the shoreline with <i>Ammophila arenaria</i> (white dunes)	<i>Leymus arenarius</i> (L.) Hochst. <i>Medicago marina</i> L.

Table 4. European priority CWR taxa characteristic of the habitat types listed in Annex I of the Habitats Directive

Habitat category	Habitat subcategory	Habitat code	Habitat type *denotes priority habitat types	European priority CWR taxa characteristic of the habitat [name in Interpretation Manual]
		21A0	Machairs (* in Ireland)	<i>Festuca rubra</i> L. <i>Lotus corniculatus</i> L. <i>Plantago lanceolata</i> L. <i>Poa pratensis</i> L. <i>Trifolium repens</i> L.
	Inland dunes, old and decalcified	2340	*Pannonic inland dunes	<i>Cynodon dactylon</i> (L.) Pers.
FRESHWATER HABITATS	Running water	3220	Alpine rivers and the herbaceous vegetation along their banks	<i>Agrostis gigantea</i> Roth
TEMPERATE HEATH AND SCRUB		4090	Endemic oro-Mediterranean heaths with gorse	<i>Prunus prostrata</i> Labill.
		40A0	*Subcontinental peri-Pannonic scrub	<i>Asparagus officinalis</i> L. <i>Prunus fruticosa</i> Pall. [<i>Cerasus fruticosa</i>]
		40C0	*Ponto-Sarmatic deciduous thickets	<i>Asparagus verticillatus</i> L. <i>Prunus spinosa</i> L.
SCLEROPHYLLOUS SCRUB (MATORRAL)	Sub-Mediterranean and temperate scrub	5110	Stable xerothermophilous formations with <i>Buxus sempervirens</i> on rock slopes (<i>Berberidion</i> p.p.)	<i>Prunus mahaleb</i> L. <i>P. spinosa</i> L.
		5130	<i>Juniperus communis</i> formations on heaths or calcareous grassland	<i>Prunus spinosa</i> L.
	Mediterranean arborescent matorral	5220	*Arborescent matorral with <i>Zyziphus</i>	<i>Asparagus albus</i> L.
		5230	*Arborescent matorral with <i>Laurus nobilis</i>	<i>Olea europaea</i> L. subsp. <i>europaea</i> [<i>Olea europaea</i> var. <i>sylvestris</i>]

Table 4. European priority CWR taxa characteristic of the habitat types listed in Annex I of the Habitats Directive

Habitat category	Habitat subcategory	Habitat code	Habitat type *denotes priority habitat types	European priority CWR taxa characteristic of the habitat [name in Interpretation Manual]
	Thermo-Mediterranean and pre-steppe brush	5320	Low formations of Euphorbia close to cliffs	<i>Pistacia lentiscus</i> L.
	Phrygana	5420	<i>Sarcopoterium spinosum phryganas</i>	<i>Pistacia lentiscus</i> L.
NATURAL AND SEMI-NATURAL GRASSLAND FORMATIONS	Natural grasslands	6120	*Xeric sand calcareous grasslands	<i>Allium schoenoprasum</i> L. <i>Astragalus arenarius</i> L.
		6130	Calaminarian grasslands of the <i>Violetalia calaminariae</i>	<i>Festuca ovina</i> subsp. <i>ophiolicola</i> (Kerguelen) M. Wilk. [<i>Festuca ophiolicola</i>]
		6170	Alpine and subalpine calcareous grasslands	<i>Phleum pratense</i> subsp. <i>brachystachyum</i> (Salis) Gamisans [<i>Phleum brachysrachyum</i> ¹⁷]
		6180	Macaronesian mesophile grasslands	<i>Lactuca watsoniana</i> Trel.
	Semi-natural dry grasslands and scrubland facies	6210	Semi-natural dry grasslands and scrubland facies on calcareous substrates (<i>Festuco-Brometalia</i>)	<i>Medicago falcata</i> L. [<i>Medicago sativa</i> subsp. <i>falcata</i>]
		6230	*Species-rich <i>Nardus</i> grasslands, on siliceous substrates in mountain areas (and submountain areas in Continental Europe)	<i>Festuca ovina</i> L.

¹⁷ The inclusion of this taxon is on the assumption that this is a spelling error in the Interpretation Manual.

Table 4. European priority CWR taxa characteristic of the habitat types listed in Annex I of the Habitats Directive

Habitat category	Habitat subcategory	Habitat code	Habitat type *denotes priority habitat types	European priority CWR taxa characteristic of the habitat [name in Interpretation Manual]
NATURAL AND SEMI-NATURAL GRASSLAND FORMATIONS		6250	*Pannonic loess steppic grasslands	<i>Agropyron cristatum</i> subsp. <i>pectinatum</i> (M. Bieb.) Tzvelev [<i>Agropyron pectinatum</i>] <i>Elytrigia intermedia</i> (Host) Nevski [<i>Elymus hispidus</i>]
		6260	*Pannonic sand steppes	<i>Cynodon dactylon</i> (L.) Pers.
		6270	*Fennoscandian lowland species-rich dry to mesic grasslands	<i>Agrostis capillaris</i> L. <i>Festuca ovina</i> L. <i>Festuca rubra</i> L. <i>Plantago lanceolata</i> L.
		6280	*Nordic alvar and precambrian calcareous flatrocks	<i>Festuca ovina</i> L.
		62C0	*Ponto-Sarmatic steppes	<i>Agropyron cristatum</i> subsp. <i>brandzae</i> (Panțu & Solacolu) Melderis [<i>Agropyron brandzae</i>] <i>Elytrigia intermedia</i> (Host) Nevski [<i>Elymus hispidus</i>]
		62D0	*Oro-Moesian acidophilous grasslands	<i>Agrostis capillaris</i> L.
	Semi-natural tall-herb humid meadows	6410	<i>Molinia</i> meadows on calcareous, peaty or clayey-silt-laden soils (<i>Molinion caeruleae</i>)	<i>Lotus pedunculatus</i> Cav. [<i>Lotus uliginosus</i>]
		6420	Mediterranean tall humid herb grasslands of the <i>Molinio-Holoschoenion</i>	<i>Agrostis stolonifera</i> L. <i>Trifolium resupinatum</i> L.

Table 4. European priority CWR taxa characteristic of the habitat types listed in Annex I of the Habitats Directive

Habitat category	Habitat subcategory	Habitat code	Habitat type *denotes priority habitat types	European priority CWR taxa characteristic of the habitat [name in Interpretation Manual]
		6450	Northern boreal alluvial meadows	<i>Festuca ovina</i> L. <i>Phalaroides arundinacea</i> (L.) Rauschert [<i>Phalaris arundinacea</i>]
		6460	Peat grasslands of Troodos	<i>Poa pratensis</i> L.
	Mesophile grasslands	6510	Lowland hay meadows (<i>Alopecurus pratensis</i> , <i>Sanguisorba officinalis</i>)	<i>Alopecurus pratensis</i> L. <i>Arrhenatherum elatius</i> (L.) J. Presl & C. Presl <i>Daucus carota</i> L. <i>Linum bienne</i> Mill. <i>Trisetum flavescens</i> (L.) P. Beauv. subsp. <i>flavescens</i>
		6520	Mountain hay meadows	<i>Trisetum flavescens</i> (L.) P. Beauv.
		6530	*Fennoscandian wooded meadows	<i>Corylus avellana</i> L. <i>Festuca ovina</i> L. <i>Malus sylvestris</i> (L.) Mill. <i>Plantago lanceolata</i> L.
		6540	Sub-Mediterranean grasslands of the <i>Molinio-Hordeion secalini</i>	<i>Trifolium fragiferum</i> L. <i>T. resupinatum</i> L.
RAISED BOGS AND MIRES AND FENS	Sphagnum acid bogs	7110	*Active raised bogs	<i>Vaccinium oxycoccos</i> L.
ROCKY HABITATS AND CAVES	Rocky slopes with chasmophytic vegetation	8230	Siliceous rock with pioneer vegetation of the <i>Sedo-Scleranthion</i> or of the <i>Sedo albi-Veronicion dillenii</i>	<i>Allium schoenoprasum</i> L. subsp. <i>schoenoprasum</i> [<i>Allium montanum</i>]

Table 4. European priority CWR taxa characteristic of the habitat types listed in Annex I of the Habitats Directive

Habitat category	Habitat subcategory	Habitat code	Habitat type *denotes priority habitat types	European priority CWR taxa characteristic of the habitat [name in Interpretation Manual]
		8240	*Limestone pavements	<i>Prunus spinosa</i> L. <i>Ribes spicatum</i> E. Robson
FORESTS	Forests of Boreal Europe	9010	*Western Taiga	<i>Agrostis capillaris</i> L.
		9020	*Fennoscandian hemiboreal natural old broad-leaved deciduous forests (<i>Quercus</i> , <i>Tilia</i> , <i>Acer</i> , <i>Fraxinus</i> or <i>Ulmus</i>) rich in epiphytes	<i>Corylus avellana</i> L.
		9040	Nordic subalpine/subarctic forests with <i>Betula pubescens</i> ssp. <i>czerepanovii</i>	<i>Rubus saxatilis</i> L.
		9060	Coniferous forests on, or connected to, glaciofluvial eskers	<i>Fragaria vesca</i> L. <i>Rubus saxatilis</i> L.
		9070	Fennoscandian wooded pastures	<i>Agrostis capillaris</i> L. <i>Fragaria vesca</i> L.
	Forests of temperate Europe	9160	Sub-Atlantic and medio-European oak or oak-hornbeam forests of the <i>Carpinion betuli</i>	<i>Dactylis glomerata</i> subsp. <i>lobata</i> (Drejer) H. Lindb. [<i>Dactylis polygama</i>]
		9170	<i>Galio-Carpinetum</i> oak-hornbeam forests	<i>Festuca heterophylla</i> Lam.
		9180	* <i>Tilio-Acerion</i> forests of slopes, screes and ravines	<i>Corylus avellana</i> L.
		91D0	*Bog woodland	<i>Vaccinium oxycoccos</i> L.

Table 4. European priority CWR taxa characteristic of the habitat types listed in Annex I of the Habitats Directive

Habitat category	Habitat subcategory	Habitat code	Habitat type *denotes priority habitat types	European priority CWR taxa characteristic of the habitat [name in Interpretation Manual]
FORESTS		91F0	Riparian mixed forests of <i>Quercus robur</i> , <i>Ulmus laevis</i> and <i>Ulmus minor</i> , <i>Fraxinus excelsior</i> or <i>Fraxinus angustifolia</i> , along the great rivers (<i>Ulmenion minoris</i>)	<i>Humulus lupulus</i> L. <i>Phalaroides arundinacea</i> (L.) Rauschert [<i>Phalaris arundinacea</i>] <i>Prunus padus</i> L. <i>Ribes rubrum</i> L. <i>Vitis vinifera</i> L. [<i>Vitis vinifera</i> subsp. <i>sylvestris</i>]
		91G0	*Pannonic woods with <i>Quercus petraea</i> and <i>Carpinus betulus</i>	<i>Festuca heterophylla</i> Lam.
		91H0	*Pannonian woods with <i>Quercus pubescens</i>	<i>Pyrus communis</i> subsp. <i>pyraster</i> (L.) Ehrh. [<i>Pyrus pyraster</i>]
		91I0	*Euro-Siberian steppic woods with <i>Quercus</i> spp.	<i>Dactylis glomerata</i> subsp. <i>lobata</i> (Drejer) H. Lindb. [<i>Dactylis polygama</i>] <i>Prunus spinosa</i> L. <i>Pyrus communis</i> subsp. <i>pyraster</i> (L.) Ehrh. [<i>Pyrus pyraster</i>]
		91K0	Illyrian <i>Fagus sylvatica</i> forests (<i>Aremonio-Fagion</i>)	<i>Corylus colurna</i> L.
		91L0	Illyrian oak-hornbeam forests (<i>Erythronio-Carpinion</i>)	<i>Castanea sativa</i> Mill.
		91M0	Pannonian-Balkan turkey oak–sessile oak forests	<i>Festuca heterophylla</i> Lam.
		91N0	*Pannonic inland sand dune thicket (<i>Junipero-Populetum albae</i>)	<i>Prunus mahaleb</i> L. <i>P. spinosa</i> L.

Table 4. European priority CWR taxa characteristic of the habitat types listed in Annex I of the Habitats Directive

Habitat category	Habitat subcategory	Habitat code	Habitat type *denotes priority habitat types	European priority CWR taxa characteristic of the habitat [name in Interpretation Manual]
FORESTS		91P0	Holy Cross fir forests (<i>Abietetum polonicum</i>)	<i>Rubus idaeus</i> L. [<i>Rubus idaes</i>]
		91W0	Moesian beech forests	<i>Fragaria vesca</i> L.
		91Y0	Dacian oak & hornbeam forests	<i>Festuca heterophylla</i> Lam. <i>Pyrus elaeagrifolia</i> Pall.
	Mediterranean deciduous forests	9210	Apennine beech forests with <i>Taxus</i> and <i>Ilex</i>	<i>Prunus spinosa</i> L.
		9220	*Apennine beech forests with <i>Abies alba</i> and beech forests with <i>Abies nebrodensis</i>	<i>Prunus spinosa</i> L.
		9260	<i>Castanea sativa</i> woods	<i>Castanea sativa</i> Mill.
		92A0	<i>Salix alba</i> and <i>Populus alba</i> galleries	<i>Juglans regia</i> L.
		92C0	<i>Platanus orientalis</i> and <i>Liquidambar orientalis</i> woods (<i>Plantanion orientalis</i>)	<i>Dactylis glomerata</i> L. <i>Juglans regia</i> L.
		92D0	Southern riparian galleries and thickets (<i>Nerio-Tamaricetea</i> and <i>Securinegion tinctoriae</i>)	<i>Prunus lusitanica</i> L.
	Mediterranean sclerophyllous forests	9320	<i>Olea</i> and <i>Ceratonia</i> forests	<i>Myrtus communis</i> L. <i>Olea europaea</i> subsp. <i>cerasiformis</i> G. Kunkel & Sunding <i>Pistacia atlantica</i> Desf. <i>P. lentiscus</i> L.
		9340	<i>Quercus ilex</i> and <i>Quercus rotundifolia</i> forests	<i>Pistacia terebinthus</i> L.

Table 4. European priority CWR taxa characteristic of the habitat types listed in Annex I of the Habitats Directive

Habitat category	Habitat subcategory	Habitat code	Habitat type *denotes priority habitat types	European priority CWR taxa characteristic of the habitat [name in Interpretation Manual]
FORESTS		9360	*Macaronesian laurel forests (<i>Laurus</i> , <i>Ocotea</i>)	<i>Asparagus fallax</i> Svent. <i>Prunus lusitanica</i> L. <i>P. lusitanica</i> subsp. <i>azorica</i> (Mouill.) Franco <i>P. lusitanica</i> subsp. <i>hixa</i> (Willd.) Franco
		9370	*Palm groves of <i>Phoenix</i>	<i>Phoenix canariensis</i> Chabaud <i>P. theophrasti</i> Greuter
		93A0	Woodlands with <i>Quercus infectoria</i> (<i>Anagyro foetidae-Quercetum infectoriae</i>)	<i>Pistacia lentiscus</i> L. <i>Pistacia terebinthus</i> L.
	Mediterranean and Macaronesian mountainous coniferous forests	9540	Mediterranean pine forests with endemic Mesogean pines	<i>Pistacia lentiscus</i> L.
		9570	* <i>Tetraclinis articulata</i> forests	<i>Asparagus albus</i> L.
		9590	* <i>Cedrus brevifolia</i> forests (<i>Cedrosetum brevifoliae</i>)	<i>Lactuca cyprica</i> (Rech. f.) N. Kilian & Greuter [<i>Cephalorrhynchus cypricus</i>]

Annex 2. European priority CWR¹⁸

Table 5. European priority CWR taxa, showing the main crop use categories and related crops

Crop wild relative	Related crop use category	Related crop common name
<i>Aegilops bicornis</i> (Forssk.) Jaub. & Spach	Cereals	Wheat
<i>Aegilops biuncialis</i> subsp. <i>archipelagica</i> (Eig) Raus	Cereals	Wheat
<i>Aegilops biuncialis</i> Vis.	Cereals	Wheat
<i>Aegilops biuncialis</i> Vis. subsp. <i>biuncialis</i>	Cereals	Wheat
<i>Aegilops caudata</i> L.	Cereals	Wheat
<i>Aegilops caudata</i> L. subsp. <i>caudata</i>	Cereals	Wheat
<i>Aegilops caudata</i> subsp. <i>polyathera</i> (Boiss.) Zhuk.	Cereals	Wheat
<i>Aegilops columnaris</i> Zhuk.	Cereals	Wheat
<i>Aegilops comosa</i> Sm.	Cereals	Wheat
<i>Aegilops comosa</i> Sm. subsp. <i>comosa</i>	Cereals	Wheat
<i>Aegilops comosa</i> subsp. <i>heldreichii</i> (Boiss.) Eig	Cereals	Wheat
<i>Aegilops crassa</i> Boiss.	Cereals	Wheat
<i>Aegilops cylindrica</i> Host	Cereals	Wheat
<i>Aegilops geniculata</i> Roth	Cereals	Wheat
<i>Aegilops juvenalis</i> (Thell.) Eig	Cereals	Wheat
<i>Aegilops kotschy</i> Boiss.	Cereals	Wheat
<i>Aegilops neglecta</i> Bertol.	Cereals	Wheat
<i>Aegilops peregrina</i> (Hack.) Maire & Weiller	Cereals	Wheat
<i>Aegilops peregrina</i> (Hack.) Maire & Weiller subsp. <i>peregrina</i>	Cereals	Wheat
<i>Aegilops peregrina</i> subsp. <i>cylindrostachys</i> (Eig & Feinbrun) Maire & Weiller	Cereals	Wheat
<i>Aegilops speltoides</i> subsp. <i>ligustica</i> (Savign.) Zhuk.	Cereals	Wheat
<i>Aegilops speltoides</i> Tausch	Cereals	Wheat
<i>Aegilops speltoides</i> Tausch subsp. <i>speltoides</i>	Cereals	Wheat

¹⁸ Kell, S. (2020, in prep.). Native and introduced CWR taxa are included because introduced populations can rapidly adapt to local environmental conditions and may harbour important genetic diversity of value for crop improvement.

Table 5. European priority CWR taxa, showing the main crop use categories and related crops

Crop wild relative	Related crop use category	Related crop common name
<i>Aegilops tauschii</i> Coss.	Cereals	Wheat
<i>Aegilops tauschii</i> Coss. subsp. <i>tauschii</i>	Cereals	Wheat
<i>Aegilops triuncialis</i> L.	Cereals	Wheat
<i>Aegilops triuncialis</i> L. subsp. <i>triuncialis</i>	Cereals	Wheat
<i>Aegilops triuncialis</i> subsp. <i>persica</i> (Boiss.) Zhuk.	Cereals	Wheat
<i>Aegilops umbellulata</i> Zhuk.	Cereals	Wheat
<i>Aegilops uniaristata</i> Vis.	Cereals	Wheat
<i>Aegilops vavilovii</i> (Zhuk.) Chennav.	Cereals	Wheat
<i>Aegilops ventricosa</i> Tausch	Cereals	Wheat
<i>Agropyron cimmericum</i> Nevski	Cereals	Wheat
<i>Agropyron cimmericum</i> Nevski	Fodder/forage	Crested wheatgrass
<i>Agropyron cristatum</i> (L.) Gaertn.	Cereals	Wheat
<i>Agropyron cristatum</i> (L.) Gaertn.	Fodder/forage	Crested wheatgrass
<i>Agropyron cristatum</i> (L.) Gaertn. subsp. <i>cristatum</i>	Fodder/forage	Crested wheatgrass
<i>Agropyron cristatum</i> subsp. <i>brandzae</i> (Panțu & Solacolu) Melderis	Fodder/forage	Crested wheatgrass
<i>Agropyron cristatum</i> subsp. <i>kazachstanicum</i> Tzvelev	Fodder/forage	Crested wheatgrass
<i>Agropyron cristatum</i> subsp. <i>pectinatum</i> (M. Bieb.) Tzvelev	Fodder/forage	Crested wheatgrass
<i>Agropyron cristatum</i> subsp. <i>ponticum</i> (Nevski) Tzvelev	Fodder/forage	Crested wheatgrass
<i>Agropyron cristatum</i> subsp. <i>puberulum</i> (Steud.) Tzvelev	Fodder/forage	Crested wheatgrass
<i>Agropyron cristatum</i> subsp. <i>sabulosum</i> Lavrenko	Fodder/forage	Crested wheatgrass
<i>Agropyron cristatum</i> subsp. <i>sclerophyllum</i> Tzvelev	Fodder/forage	Crested wheatgrass
<i>Agropyron dasyanthum</i> Ledeb.	Cereals	Wheat
<i>Agropyron dasyanthum</i> Ledeb.	Fodder/forage	Crested wheatgrass
<i>Agropyron desertorum</i> (Link) Schult.	Cereals	Wheat
<i>Agropyron desertorum</i> (Link) Schult.	Fodder/forage	Crested wheatgrass
<i>Agropyron desertorum</i> (Link) Schult.	Fodder/forage	Desert crested wheatgrass
<i>Agropyron tanaiticum</i> Nevski	Cereals	Wheat
<i>Agropyron tanaiticum</i> Nevski	Fodder/forage	Crested wheatgrass

Table 5. European priority CWR taxa, showing the main crop use categories and related crops

Crop wild relative	Related crop use category	Related crop common name
<i>Agrostis capillaris</i> L.	Fodder/forage	Brown top
<i>Agrostis capillaris</i> L. subsp. <i>capillaris</i>	Fodder/forage	Brown top
<i>Agrostis capillaris</i> subsp. <i>oreophila</i> (O. Schwarz) Soják	Fodder/forage	Brown top
<i>Agrostis capillaris</i> subsp. <i>repens</i> (Schur) Soják	Fodder/forage	Brown top
<i>Agrostis gigantea</i> Roth	Fodder/forage	Red top
<i>Agrostis gigantea</i> Roth subsp. <i>gigantea</i>	Fodder/forage	Red top
<i>Agrostis gigantea</i> subsp. <i>glaucescens</i> (Widén) Valdés & H. Scholz	Fodder/forage	Red top
<i>Agrostis gigantea</i> subsp. <i>maeotica</i> (Klokov) Tzvelev	Fodder/forage	Red top
<i>Agrostis gigantea</i> subsp. <i>moldavica</i> (Dobrescu & Beldie) Dihoru	Fodder/forage	Red top
<i>Agrostis gigantea</i> subsp. <i>pontica</i> (Grecescu) Dihoru	Fodder/forage	Red top
<i>Agrostis stolonifera</i> L.	Fodder/forage	Creeping bent
<i>Agrostis stolonifera</i> L. subsp. <i>stolonifera</i>	Fodder/forage	Creeping bent
<i>Agrostis stolonifera</i> subsp. <i>albida</i> (Trin.) Tzvelev	Fodder/forage	Creeping bent
<i>Agrostis stolonifera</i> subsp. <i>filifolia</i> (Link) H. Scholz	Fodder/forage	Creeping bent
<i>Agrostis stolonifera</i> subsp. <i>gaditana</i> (Boiss. & Reut.) Valdés & H. Scholz	Fodder/forage	Creeping bent
<i>Agrostis stolonifera</i> subsp. <i>maritima</i> (Lam.) Vasc.	Fodder/forage	Creeping bent
<i>Agrostis stolonifera</i> subsp. <i>scabriglumis</i> (Boiss. & Reut.) Maire	Fodder/forage	Creeping bent
<i>Agrostis stolonifera</i> subsp. <i>straminea</i> (Hartm.) Tzvelev	Fodder/forage	Creeping bent
<i>Allium albiflorum</i> Omelczuk	Vegetables (flavouring)	Alliums
<i>Allium ampeloprasum</i> L.	Vegetables (flavouring)	Garlic
<i>Allium ampeloprasum</i> L.	Vegetables (flavouring/green)	Leek
<i>Allium atrovioleaceum</i> Boiss.	Vegetables (flavouring)	Garlic
<i>Allium atrovioleaceum</i> Boiss.	Vegetables (flavouring/green)	Leek
<i>Allium bourgeaui</i> Rech. f.	Vegetables (flavouring/green)	Leek
<i>Allium bourgeaui</i> Rech. f. subsp. <i>bourgeaui</i>	Vegetables (flavouring/green)	Leek
<i>Allium bourgeaui</i> subsp. <i>creticum</i> Bothmer	Vegetables (flavouring/green)	Leek
<i>Allium bourgeaui</i> subsp. <i>cycladicum</i> Bothmer	Vegetables (flavouring/green)	Leek
<i>Allium commutatum</i> Guss.	Vegetables (flavouring/green)	Leek

Table 5. European priority CWR taxa, showing the main crop use categories and related crops

Crop wild relative	Related crop use category	Related crop common name
<i>Allium convallarioides</i> Grossh.	Vegetables (flavouring)	Alliums
<i>Allium corsicum</i> Jauzein & al.	Vegetables (flavouring)	Alliums
<i>Allium exaltatum</i> (Meikle) Brullo, Pavone, Salmeri & Venora	Vegetables (flavouring)	Alliums
<i>Allium fistulosum</i> L.	Vegetables (flavouring)	Chinese chives
<i>Allium fistulosum</i> L.	Vegetables (flavouring)	Chives
<i>Allium fistulosum</i> L.	Vegetables (flavouring)	Onion
<i>Allium lojaconoi</i> Brullo, Lanfr. & Pavone	Vegetables (flavouring)	Alliums
<i>Allium melananthum</i> Coincy	Vegetables (flavouring)	Alliums
<i>Allium pardoi</i> Loscos	Vegetables (flavouring)	Alliums
<i>Allium pervestitum</i> Klokov	Vegetables (flavouring)	Alliums
<i>Allium pyrenaicum</i> Costa & Vayr.	Vegetables (flavouring)	Alliums
<i>Allium sativum</i> L.	Vegetables (flavouring)	Garlic
<i>Allium scabriscapum</i> Boiss.	Vegetables (flavouring)	Chinese chives
<i>Allium schmitzii</i> Cout.	Vegetables (flavouring)	Chinese scallion
<i>Allium schmitzii</i> Cout.	Vegetables (flavouring)	Chives
<i>Allium schoenoprasum</i> L.	Vegetables (flavouring)	Chinese scallion
<i>Allium schoenoprasum</i> L.	Vegetables (flavouring)	Chives
<i>Allium schoenoprasum</i> L.	Vegetables (flavouring)	Welsh onion
<i>Allium schoenoprasum</i> L.	Vegetables (flavouring/green)	Leek
<i>Allium schoenoprasum</i> L. subsp. <i>schoenoprasum</i>	Vegetables (flavouring)	Chives
<i>Allium schoenoprasum</i> subsp. <i>gredense</i> (Rivas Goday) Rivas Mart., Fern. Gonz. & Sánchez Mata	Vegetables (flavouring)	Chives
<i>Allium schoenoprasum</i> subsp. <i>latiorifolium</i> (Pau) Rivas Mart., Fern. Gonz. & Sánchez Mata	Vegetables (flavouring)	Chives
<i>Allium truncatum</i> (Feinbrun) F. Kollmann & D. Zohary	Vegetables (flavouring/green)	Leek
<i>Allium tuberosum</i> Rottler ex Spreng.	Vegetables (flavouring)	Chinese chives
<i>Alopecurus pratensis</i> L.	Fodder/forage	Meadow foxtail
<i>Alopecurus pratensis</i> L. subsp. <i>pratensis</i>	Fodder/forage	Meadow foxtail

Table 5. European priority CWR taxa, showing the main crop use categories and related crops

Crop wild relative	Related crop use category	Related crop common name
<i>Alopecurus pratensis</i> subsp. <i>alpestris</i> (Wahlenb.) Selander	Fodder/forage	Meadow foxtail
<i>Alopecurus pratensis</i> subsp. <i>laguriformis</i> (Schur) Tzvelev	Fodder/forage	Meadow foxtail
<i>Alopecurus pratensis</i> subsp. <i>pseudonigricans</i> O. Schwarz	Fodder/forage	Meadow foxtail
<i>Amblyopyrum muticum</i> (Boiss.) Eig	Cereals	Wheat
<i>Armoracia rusticana</i> P. Gaertn. , B. Mey. & Scherb.	Vegetables (flavouring)	Horseradish
<i>Armoracia rusticana</i> P. Gaertn. , B. Mey. & Scherb.	Vegetables (green)	Kale
<i>Arrhenatherum elatius</i> (L.) J. Presl & C. Presl	Fodder/forage	Tall oatgrass
<i>Arrhenatherum elatius</i> (L.) J. Presl & C. Presl subsp. <i>elatius</i>	Fodder/forage	Tall oatgrass
<i>Arrhenatherum elatius</i> subsp. <i>baeticum</i> Romero Zarco	Fodder/forage	Tall oatgrass
<i>Arrhenatherum elatius</i> subsp. <i>bulbosum</i> (Willd.) Schübl. & G. Martens	Fodder/forage	Tall oatgrass
<i>Arrhenatherum elatius</i> subsp. <i>nebrodense</i> (Brullo & al.) Giardina & Raimondo	Fodder/forage	Tall oatgrass
<i>Arrhenatherum elatius</i> subsp. <i>sardoum</i> (Em. Schmid) Gamisans	Fodder/forage	Tall oatgrass
<i>Asparagus acutifolius</i> L.	Vegetables (green)	Asparagus
<i>Asparagus albus</i> L.	Vegetables (green)	Asparagus
<i>Asparagus aphyllus</i> L.	Vegetables (green)	Asparagus
<i>Asparagus aphyllus</i> L. subsp. <i>aphyllus</i>	Vegetables (green)	Asparagus
<i>Asparagus aphyllus</i> subsp. <i>orientalis</i> (Baker) P. H. Davis	Vegetables (green)	Asparagus
<i>Asparagus arborescens</i> Willd. ex Schult. & Schult. f.	Vegetables (green)	Asparagus
<i>Asparagus densiflorus</i> (Kunth) Jessop	Vegetables (green)	Asparagus
<i>Asparagus fallax</i> Svent.	Vegetables (green)	Asparagus
<i>Asparagus horridus</i> L.	Vegetables (green)	Asparagus
<i>Asparagus inderiensis</i> Blume ex Ledeb.	Vegetables (green)	Asparagus
<i>Asparagus maritimus</i> (L.) Mill.	Vegetables (green)	Asparagus
<i>Asparagus nesiotes</i> subsp. <i>purpurei</i> ens <i>ensis</i> Marrero Rodr. & A. Ramos	Vegetables (green)	Asparagus
<i>Asparagus nesiotes</i> Svent.	Vegetables (green)	Asparagus
<i>Asparagus nesiotes</i> Svent. subsp. <i>nesiotes</i>	Vegetables (green)	Asparagus
<i>Asparagus officinalis</i> L.	Vegetables (green)	Asparagus
<i>Asparagus officinalis</i> L. subsp. <i>officinalis</i>	Vegetables (green)	Asparagus

Table 5. European priority CWR taxa, showing the main crop use categories and related crops

Crop wild relative	Related crop use category	Related crop common name
<i>Asparagus officinalis</i> subsp. <i>prostratus</i> (Dumort.) Corb.	Vegetables (green)	Asparagus
<i>Asparagus pastorianus</i> Webb & Berthel.	Vegetables (green)	Asparagus
<i>Asparagus plocamoides</i> Webb ex Svent.	Vegetables (green)	Asparagus
<i>Asparagus pseudoscaber</i> Grecescu	Vegetables (green)	Asparagus
<i>Asparagus tenuifolius</i> Lam.	Vegetables (green)	Asparagus
<i>Asparagus verticillatus</i> L.	Vegetables (green)	Asparagus
<i>Astartoseris triquetra</i> (Labill.) N. Kilian & al.	Vegetables (salad)	Lettuce
<i>Astragalus arenarius</i> L.	Fodder/forage	Milkvetch
<i>Astragalus cicer</i> L.	Fodder/forage	Chickpea milkvetch
<i>Astragalus pelecinus</i> (L.) Barneby	Fodder/forage	Serradella
<i>Astragalus pelecinus</i> (L.) Barneby subsp. <i>pelecinus</i>	Fodder/forage	Serradella
<i>Atriplex halimus</i> L.	Fodder/forage	Mediterranean saltbush
<i>Avena barbata</i> Link	Cereals	Oat
<i>Avena barbata</i> Link subsp. <i>barbata</i>	Cereals	Oat
<i>Avena barbata</i> subsp. <i>castellana</i> Romero Zarco	Cereals	Oat
<i>Avena barbata</i> subsp. <i>hirtula</i> (Lag.) Tab. Morais	Cereals	Oat
<i>Avena barbata</i> subsp. <i>lusitanica</i> (Tab. Morais) Romero Zarco	Cereals	Oat
<i>Avena barbata</i> subsp. <i>wiestii</i> (Steud.) Mansf.	Cereals	Oat
<i>Avena byzantina</i> K. Koch	Cereals	Oat
<i>Avena clauda</i> Durieu	Cereals	Oat
<i>Avena eriantha</i> Durieu	Cereals	Oat
<i>Avena fatua</i> L.	Cereals	Oat
<i>Avena fatua</i> L. subsp. <i>fatua</i>	Cereals	Oat
<i>Avena fatua</i> subsp. <i>aemulans</i> (Nevski) H. Scholz	Cereals	Oat
<i>Avena fatua</i> subsp. <i>cultiformis</i> Malzev	Cereals	Oat
<i>Avena fatua</i> subsp. <i>meridionalis</i> Malzev	Cereals	Oat
<i>Avena hybrida</i> Peterm.	Cereals	Oat
<i>Avena insularis</i> Ladiz.	Cereals	Oat

Table 5. European priority CWR taxa, showing the main crop use categories and related crops

Crop wild relative	Related crop use category	Related crop common name
<i>Avena longiglumis</i> Durieu	Cereals	Oat
<i>Avena murphyi</i> Ladiz.	Cereals	Oat
<i>Avena sterilis</i> L.	Cereals	Oat
<i>Avena sterilis</i> L. subsp. <i>sterilis</i>	Cereals	Oat
<i>Avena sterilis</i> subsp. <i>atherantha</i> (C. Presl) H. Scholz	Cereals	Oat
<i>Avena sterilis</i> subsp. <i>ludoviciana</i> (Durieu) Gillet & Magne	Cereals	Oat
<i>Avena sterilis</i> subsp. <i>trichophylla</i> (K. Koch) Malzev	Cereals	Oat
<i>Avena strigosa</i> Schreb.	Cereals	Oat
<i>Barbarea verna</i> (Mill.) Asch.	Vegetables (salad)	American cress/early winter cress
<i>Beta corolliflora</i> Buttler	Sugar/fodder/vegetables (green)	Sugarbeet
<i>Beta lomatogona</i> Fisch. & C. A. Mey.	Sugar/fodder/vegetables (green)	Sugarbeet
<i>Beta macrocarpa</i> Guss.	Sugar/fodder/vegetables (green)	Sugarbeet
<i>Beta macrorhiza</i> Steven	Sugar/fodder/vegetables (green)	Sugarbeet
<i>Beta nana</i> Boiss. & Heldr.	Sugar/fodder/vegetables (green)	Sugarbeet
<i>Beta patula</i> Aiton	Sugar/fodder/vegetables (green)	Sugarbeet
<i>Beta trigyna</i> Waldst. & Kit.	Sugar/fodder/vegetables (green)	Sugarbeet
<i>Beta vulgaris</i> L.	Fodder/forage	Fodder beet
<i>Beta vulgaris</i> L.	Sugar/fodder/vegetables (green)	Sugarbeet
<i>Beta vulgaris</i> L. subsp. <i>vulgaris</i>	Sugar/fodder/vegetables (green)	Sugarbeet

Table 5. European priority CWR taxa, showing the main crop use categories and related crops

Crop wild relative	Related crop use category	Related crop common name
Beta vulgaris subsp. adanensis Pamuk.	Sugar/fodder/vegetables (green)	Sugarbeet
Beta vulgaris subsp. maritima (L.) Arcang.	Sugar/fodder/vegetables (green)	Sugarbeet
Brassica barrelieri (L.) Janka	Vegetables (root)/fodder	Turnip
Brassica cretica Lam.	Oils/fodder	Rape
Brassica cretica Lam.	Vegetables (green)	Cabbage
Brassica cretica Lam.	Vegetables (root)/fodder	Turnip
Brassica cretica Lam. subsp. cretica	Vegetables (green)	Cabbage
Brassica cretica subsp. aegaea (Heldr. & Halácsy) Snogerup, M. A. Gust. & Bothmer	Vegetables (green)	Cabbage
Brassica cretica subsp. laconica M. A. Gust. & Snogerup	Vegetables (green)	Cabbage
Brassica cretica subsp. nivea (Boiss. & Spruner) M. A. Gust. & Snogerup	Vegetables (green)	Cabbage
Brassica elongata Ehrh.	Oils/fodder	Rape
Brassica elongata Ehrh.	Vegetables (green)	Cabbage
Brassica elongata Ehrh.	Vegetables (root)/fodder	Turnip
Brassica elongata Ehrh.	Vegetables (salad)	Perennial wall rocket
Brassica elongata Ehrh. subsp. elongata	Vegetables (green)	Cabbage
Brassica elongata subsp. integrifolia (Boiss.) Breistr.	Vegetables (green)	Cabbage
Brassica elongata subsp. pinnatifida (Schmalh.) Greuter & Burdet	Vegetables (green)	Cabbage
Brassica fruticulosa Cirillo	Oils/fodder	Rape
Brassica fruticulosa Cirillo	Spices	Black mustard
Brassica fruticulosa Cirillo	Vegetables (green)	Ethiopian cabbage
Brassica fruticulosa Cirillo	Vegetables (root)/fodder	Turnip
Brassica fruticulosa Cirillo	Vegetables (salad)	Radish
Brassica fruticulosa Cirillo subsp. fruticulosa	Oils/fodder	Rape
Brassica fruticulosa Cirillo subsp. fruticulosa	Vegetables (root)/fodder	Turnip
Brassica fruticulosa subsp. cossoniana (Boiss. & Reut.) Maire	Oils/fodder	Rape
Brassica hilarionis Post	Oils/fodder	Rape

Table 5. European priority CWR taxa, showing the main crop use categories and related crops

Crop wild relative	Related crop use category	Related crop common name
Brassica hilarionis Post	Vegetables (green)	Cabbage
Brassica incana Ten.	Oils/fodder	Rape
Brassica incana Ten.	Vegetables (green)	Cabbage
Brassica incana Ten.	Vegetables (root)/fodder	Turnip
Brassica insularis Moris	Oils/fodder	Rape
Brassica insularis Moris	Vegetables (green)	Cabbage
Brassica insularis Moris	Vegetables (root)/fodder	Turnip
Brassica macrocarpa Guss.	Vegetables (green)	Cabbage
Brassica macrocarpa Guss.	Vegetables (root)/fodder	Turnip
Brassica maurorum Durieu	Oils/fodder	Rape
Brassica maurorum Durieu	Spices	Black mustard
Brassica maurorum Durieu	Spices/oils/vegetables (green)	Mustard
Brassica maurorum Durieu	Vegetables (green)	Ethiopian cabbage
Brassica maurorum Durieu	Vegetables (root)/fodder	Turnip
Brassica maurorum Durieu	Vegetables (salad)	Radish
Brassica montana Pourr.	Oils/fodder	Rape
Brassica montana Pourr.	Vegetables (green)	Cabbage
Brassica montana Pourr.	Vegetables (root)/fodder	Turnip
Brassica napus L.	Oils/fodder	Rape
Brassica napus L.	Spices	Black mustard
Brassica napus L.	Spices/oils/vegetables (green)	Mustard
Brassica napus L.	Vegetables (green)	Cabbage
Brassica napus L.	Vegetables (green)	Ethiopian cabbage
Brassica napus L.	Vegetables (root)/fodder	Turnip
Brassica nigra (L.) W. D. J. Koch	Oils/fodder	Rape
Brassica nigra (L.) W. D. J. Koch	Spices	Black mustard
Brassica nigra (L.) W. D. J. Koch	Spices	White mustard
Brassica nigra (L.) W. D. J. Koch	Spices/oils/vegetables (green)	Mustard

Table 5. European priority CWR taxa, showing the main crop use categories and related crops

Crop wild relative	Related crop use category	Related crop common name
Brassica nigra (L.) W. D. J. Koch	Vegetables (green)	Cabbage
Brassica nigra (L.) W. D. J. Koch	Vegetables (green)	Ethiopian cabbage
Brassica nigra (L.) W. D. J. Koch	Vegetables (root)/fodder	Turnip
Brassica nigra (L.) W. D. J. Koch	Vegetables (salad)	Perennial wall rocket
Brassica nigra (L.) W. D. J. Koch	Vegetables (salad)	Radish
Brassica oleracea L.	Oils/fodder	Rape
Brassica oleracea L.	Spices	Black mustard
Brassica oleracea L.	Spices	White mustard
Brassica oleracea L.	Spices/oils/vegetables (green)	Mustard
Brassica oleracea L.	Vegetables (green)	Cabbage
Brassica oleracea L.	Vegetables (green)	Ethiopian cabbage
Brassica oleracea L.	Vegetables (root)/fodder	Turnip
Brassica oleracea L.	Vegetables (salad)	Perennial wall rocket
Brassica oleracea L.	Vegetables (salad)	Radish
Brassica oleracea L.	Vegetables (salad)	Salad rocket
Brassica oleracea L. subsp. oleracea	Oils/fodder	Rape
Brassica oleracea L. subsp. oleracea	Spices	Black mustard
Brassica oleracea L. subsp. oleracea	Spices	White mustard
Brassica oleracea L. subsp. oleracea	Spices/oils/vegetables (green)	Mustard
Brassica oleracea L. subsp. oleracea	Vegetables (green)	Cabbage
Brassica oleracea L. subsp. oleracea	Vegetables (green)	Ethiopian cabbage
Brassica oleracea L. subsp. oleracea	Vegetables (root)/fodder	Turnip
Brassica oleracea L. subsp. oleracea	Vegetables (salad)	Perennial wall rocket
Brassica oleracea L. subsp. oleracea	Vegetables (salad)	Radish
Brassica oleracea L. subsp. oleracea	Vegetables (salad)	Salad rocket
Brassica oleracea subsp. botrytis (L.) Duchesne	Oils/fodder	Rape
Brassica oleracea subsp. botrytis (L.) Duchesne	Spices	Black mustard
Brassica oleracea subsp. botrytis (L.) Duchesne	Spices	White mustard

Table 5. European priority CWR taxa, showing the main crop use categories and related crops

Crop wild relative	Related crop use category	Related crop common name
Brassica oleracea subsp. botrytis (L.) Duchesne	Spices/oils/vegetables (green)	Mustard
Brassica oleracea subsp. botrytis (L.) Duchesne	Vegetables (green)	Cabbage
Brassica oleracea subsp. botrytis (L.) Duchesne	Vegetables (green)	Ethiopian cabbage
Brassica oleracea subsp. botrytis (L.) Duchesne	Vegetables (root)/fodder	Turnip
Brassica oleracea subsp. botrytis (L.) Duchesne	Vegetables (salad)	Perennial wall rocket
Brassica oleracea subsp. botrytis (L.) Duchesne	Vegetables (salad)	Radish
Brassica oleracea subsp. botrytis (L.) Duchesne	Vegetables (salad)	Salad rocket
Brassica oleracea subsp. capitata (L.) Duchesne	Oils/fodder	Rape
Brassica oleracea subsp. capitata (L.) Duchesne	Spices	Black mustard
Brassica oleracea subsp. capitata (L.) Duchesne	Spices	White mustard
Brassica oleracea subsp. capitata (L.) Duchesne	Spices/oils/vegetables (green)	Mustard
Brassica oleracea subsp. capitata (L.) Duchesne	Vegetables (green)	Cabbage
Brassica oleracea subsp. capitata (L.) Duchesne	Vegetables (green)	Ethiopian cabbage
Brassica oleracea subsp. capitata (L.) Duchesne	Vegetables (root)/fodder	Turnip
Brassica oleracea subsp. capitata (L.) Duchesne	Vegetables (salad)	Perennial wall rocket
Brassica oleracea subsp. capitata (L.) Duchesne	Vegetables (salad)	Radish
Brassica oleracea subsp. capitata (L.) Duchesne	Vegetables (salad)	Salad rocket
Brassica oleracea subsp. caulorapa (DC.) Metzg.	Oils/fodder	Rape
Brassica oleracea subsp. caulorapa (DC.) Metzg.	Spices	Black mustard
Brassica oleracea subsp. caulorapa (DC.) Metzg.	Spices	White mustard
Brassica oleracea subsp. caulorapa (DC.) Metzg.	Spices/oils/vegetables (green)	Mustard
Brassica oleracea subsp. caulorapa (DC.) Metzg.	Vegetables (green)	Cabbage
Brassica oleracea subsp. caulorapa (DC.) Metzg.	Vegetables (green)	Ethiopian cabbage
Brassica oleracea subsp. caulorapa (DC.) Metzg.	Vegetables (root)/fodder	Turnip
Brassica oleracea subsp. caulorapa (DC.) Metzg.	Vegetables (salad)	Perennial wall rocket
Brassica oleracea subsp. caulorapa (DC.) Metzg.	Vegetables (salad)	Radish
Brassica oleracea subsp. caulorapa (DC.) Metzg.	Vegetables (salad)	Salad rocket
Brassica oleracea subsp. fruticosa Metzg.	Oils/fodder	Rape

Table 5. European priority CWR taxa, showing the main crop use categories and related crops

Crop wild relative	Related crop use category	Related crop common name
<i>Brassica oleracea</i> subsp. <i>fruticosa</i> Metzg.	Spices	Black mustard
<i>Brassica oleracea</i> subsp. <i>fruticosa</i> Metzg.	Spices	White mustard
<i>Brassica oleracea</i> subsp. <i>fruticosa</i> Metzg.	Spices/oils/vegetables (green)	Mustard
<i>Brassica oleracea</i> subsp. <i>fruticosa</i> Metzg.	Vegetables (green)	Cabbage
<i>Brassica oleracea</i> subsp. <i>fruticosa</i> Metzg.	Vegetables (green)	Ethiopian cabbage
<i>Brassica oleracea</i> subsp. <i>fruticosa</i> Metzg.	Vegetables (root)/fodder	Turnip
<i>Brassica oleracea</i> subsp. <i>fruticosa</i> Metzg.	Vegetables (salad)	Perennial wall rocket
<i>Brassica oleracea</i> subsp. <i>fruticosa</i> Metzg.	Vegetables (salad)	Radish
<i>Brassica oleracea</i> subsp. <i>fruticosa</i> Metzg.	Vegetables (salad)	Salad rocket
<i>Brassica oxyrrhina</i> (Coss.) Willk.	Spices/oils/vegetables (green)	Mustard
<i>Brassica rapa</i> (L.) L.	Oils/fodder	Rape
<i>Brassica rapa</i> (L.) L.	Spices	Black mustard
<i>Brassica rapa</i> (L.) L.	Spices	White mustard
<i>Brassica rapa</i> (L.) L.	Spices/oils/vegetables (green)	Mustard
<i>Brassica rapa</i> (L.) L.	Vegetables (green)	Cabbage
<i>Brassica rapa</i> (L.) L.	Vegetables (green)	Ethiopian cabbage
<i>Brassica rapa</i> (L.) L.	Vegetables (root)/fodder	Turnip
<i>Brassica rapa</i> (L.) L.	Vegetables (salad)	Perennial wall rocket
<i>Brassica rapa</i> (L.) L.	Vegetables (salad)	Radish
<i>Brassica rapa</i> (L.) L.	Vegetables (salad)	Salad rocket
<i>Brassica rapa</i> L. subsp. <i>rapa</i>	Vegetables (root)/fodder	Turnip
<i>Brassica rapa</i> subsp. <i>campestris</i> (L.) A. R. Clapham	Vegetables (root)/fodder	Turnip
<i>Brassica rapa</i> subsp. <i>chinensis</i> (L.) Hanelt	Vegetables (root)/fodder	Turnip
<i>Brassica rapa</i> subsp. <i>oleifera</i> (DC.) Metzg.	Vegetables (root)/fodder	Turnip
<i>Brassica rapa</i> subsp. <i>pekinensis</i> (Lour.) Hanelt	Vegetables (root)/fodder	Turnip
<i>Brassica repanda</i> subsp. <i>glabrescens</i> (Poldini) Gómez Campo	Oils/fodder	Rape
<i>Brassica repanda</i> subsp. <i>glabrescens</i> (Poldini) Gómez Campo	Vegetables (salad)	Salad rocket
<i>Brassica rupestris</i> Raf.	Vegetables (green)	Cabbage

Table 5. European priority CWR taxa, showing the main crop use categories and related crops

Crop wild relative	Related crop use category	Related crop common name
<i>Brassica tournefortii</i> Gouan	Oils/fodder	Rape
<i>Brassica tournefortii</i> Gouan	Spices	Black mustard
<i>Brassica tournefortii</i> Gouan	Spices/oils/vegetables (green)	Mustard
<i>Brassica tournefortii</i> Gouan	Vegetables (green)	Cabbage
<i>Brassica tournefortii</i> Gouan	Vegetables (green)	Ethiopian cabbage
<i>Brassica tournefortii</i> Gouan	Vegetables (root)/fodder	Turnip
<i>Brassica tournefortii</i> Gouan	Vegetables (salad)	Radish
<i>Brassica villosa</i> Biv.	Vegetables (green)	Cabbage
<i>Brassica villosa</i> subsp. <i>drepanensis</i> (Caruel) Raimondo & P. Mazzola	Vegetables (green)	Cabbage
<i>Carthamus boissieri</i> Halácsy	Oils	Safflower seed
<i>Carthamus creticus</i> L.	Oils	Safflower seed
<i>Carthamus dentatus</i> (Forssk.) Vahl	Oils	Safflower seed
<i>Carthamus dentatus</i> (Forssk.) Vahl subsp. <i>dentatus</i>	Oils	Safflower seed
<i>Carthamus dentatus</i> subsp. <i>ruber</i> (Link) Hanelt	Oils	Safflower seed
<i>Carthamus glaucus</i> M. Bieb.	Oils	Safflower seed
<i>Carthamus glaucus</i> M. Bieb. subsp. <i>glaucus</i>	Oils	Safflower seed
<i>Carthamus lanatus</i> L.	Oils	Safflower seed
<i>Carthamus leucocaulos</i> Sm.	Oils	Safflower seed
<i>Carthamus persicus</i> Willd.	Oils	Safflower seed
<i>Carthamus tenuis</i> (Boiss. & C. I. Blanche) Bornm.	Oils	Safflower seed
<i>Carthamus tenuis</i> (Boiss. & C. I. Blanche) Bornm. subsp. <i>tenuis</i>	Oils	Safflower seed
<i>Carthamus tenuis</i> subsp. <i>foliosus</i> Hanelt	Oils	Safflower seed
<i>Carthamus tenuis</i> subsp. <i>gracillimus</i> (Rech. f.) Hanelt	Oils	Safflower seed
<i>Castanea crenata</i> Siebold & Zucc.	Nuts	American chestnut
<i>Castanea crenata</i> Siebold & Zucc.	Nuts	Chestnut
<i>Castanea crenata</i> Siebold & Zucc.	Nuts	Chinese chestnut
<i>Castanea crenata</i> Siebold & Zucc.	Nuts	Japanese chestnut
<i>Castanea sativa</i> Mill.	Nuts	Chestnut

Table 5. European priority CWR taxa, showing the main crop use categories and related crops

Crop wild relative	Related crop use category	Related crop common name
<i>Castanea sativa</i> Mill.	Nuts	Chinese chestnut
<i>Castanea sativa</i> Mill.	Nuts	Japanese chestnut
<i>Chenopodium berlandieri</i> Moq.	Cereals	Quinoa
<i>Chenopodium ficifolium</i> Sm.	Cereals	Quinoa
<i>Chenopodium hircinum</i> Schrad.	Cereals	Quinoa
<i>Chenopodium quinoa</i> Willd.	Cereals	Quinoa
<i>Cicer bijugum</i> Rech. f.	Pulses	Chickpea
<i>Cicer canariense</i> A. Santos & G. P. Lewis	Pulses	Chickpea
<i>Cicer echinospermum</i> P. H. Davis	Pulses	Chickpea
<i>Cicer graecum</i> Boiss.	Pulses	Chickpea
<i>Cicer pinnatifidum</i> Jaub. & Spach	Pulses	Chickpea
<i>Cicer reticulatum</i> Ladiz.	Pulses	Chickpea
<i>Cichorium calvum</i> Asch.	Vegetables (salad)/forage	Chicory
<i>Cichorium endivia</i> L.	Vegetables (salad)/forage	Chicory
<i>Cichorium intybus</i> L.	Vegetables (salad)/forage	Chicory
<i>Cichorium pumilum</i> Jacq.	Vegetables (salad)/forage	Chicory
<i>Cichorium spinosum</i> L.	Vegetables (salad)/forage	Chicory
<i>Citrullus colocynthis</i> (L.) Schrad.	Fruits	Watermelon
<i>Citrullus lanatus</i> (Thunb.) Matsum. & Nakai	Fruits	Watermelon
<i>Coincya monensis</i> (L.) Greuter & Burdet	Oils/fodder	Rape
<i>Coincya monensis</i> (L.) Greuter & Burdet	Spices	Black mustard
<i>Coincya monensis</i> (L.) Greuter & Burdet	Spices	White mustard
<i>Coincya monensis</i> (L.) Greuter & Burdet	Vegetables (green)	Cabbage
<i>Coincya monensis</i> (L.) Greuter & Burdet	Vegetables (root)/fodder	Turnip
<i>Coincya monensis</i> (L.) Greuter & Burdet subsp. <i>monensis</i>	Spices	Black mustard
<i>Coincya monensis</i> (L.) Greuter & Burdet subsp. <i>monensis</i>	Spices	White mustard
<i>Coincya monensis</i> (L.) Greuter & Burdet subsp. <i>monensis</i>	Vegetables (green)	Cabbage
<i>Coincya monensis</i> (L.) Greuter & Burdet subsp. <i>monensis</i>	Vegetables (root)/fodder	Turnip

Table 5. European priority CWR taxa, showing the main crop use categories and related crops

Crop wild relative	Related crop use category	Related crop common name
<i>Coincya monensis</i> subsp. <i>cheiranthos</i> (Vill.) Aedo, Leadley & Muñoz Garm	Spices	Black mustard
<i>Coincya monensis</i> subsp. <i>cheiranthos</i> (Vill.) Aedo, Leadley & Muñoz Garm	Spices	White mustard
<i>Coincya monensis</i> subsp. <i>cheiranthos</i> (Vill.) Aedo, Leadley & Muñoz Garm	Vegetables (green)	Cabbage
<i>Coincya monensis</i> subsp. <i>cheiranthos</i> (Vill.) Aedo, Leadley & Muñoz Garm	Vegetables (root)/fodder	Turnip
<i>Coincya monensis</i> subsp. <i>nevadensis</i> (Willk.) Leadlay	Spices	Black mustard
<i>Coincya monensis</i> subsp. <i>nevadensis</i> (Willk.) Leadlay	Spices	White mustard
<i>Coincya monensis</i> subsp. <i>nevadensis</i> (Willk.) Leadlay	Vegetables (green)	Cabbage
<i>Coincya monensis</i> subsp. <i>nevadensis</i> (Willk.) Leadlay	Vegetables (root)/fodder	Turnip
<i>Coincya monensis</i> subsp. <i>orophila</i> (Franco) Aedo, Leadlay & Muñoz Garm.	Spices	Black mustard
<i>Coincya monensis</i> subsp. <i>orophila</i> (Franco) Aedo, Leadlay & Muñoz Garm.	Spices	White mustard
<i>Coincya monensis</i> subsp. <i>orophila</i> (Franco) Aedo, Leadlay & Muñoz Garm.	Vegetables (green)	Cabbage
<i>Coincya monensis</i> subsp. <i>orophila</i> (Franco) Aedo, Leadlay & Muñoz Garm.	Vegetables (root)/fodder	Turnip
<i>Coincya monensis</i> subsp. <i>puberula</i> (Pau) Leadlay	Spices	Black mustard
<i>Coincya monensis</i> subsp. <i>puberula</i> (Pau) Leadlay	Spices	White mustard
<i>Coincya monensis</i> subsp. <i>puberula</i> (Pau) Leadlay	Vegetables (green)	Cabbage
<i>Coincya monensis</i> subsp. <i>puberula</i> (Pau) Leadlay	Vegetables (root)/fodder	Turnip
<i>Comarum palustre</i> L.	Fruits	Strawberry
<i>Corylus avellana</i> L.	Nuts	Giant filbert
<i>Corylus avellana</i> L.	Nuts	Hazelnut
<i>Corylus avellana</i> L.	Nuts	Turkish hazelnut
<i>Corylus colurna</i> L.	Nuts	Giant filbert
<i>Corylus colurna</i> L.	Nuts	Hazelnut
<i>Corylus colurna</i> L.	Nuts	Turkish hazelnut
<i>Corylus maxima</i> Mill.	Nuts	Giant filbert
<i>Crambe arborea</i> H. Christ	Vegetables (green)	Ethiopian cabbage
<i>Crambe aspera</i> M. Bieb.	Vegetables (green)	Ethiopian cabbage
<i>Crambe feuillei</i> A. Santos ex Prina & Mart.-Laborde	Vegetables (green)	Ethiopian cabbage
<i>Crambe filiformis</i> Jacq.	Vegetables (green)	Ethiopian cabbage

Table 5. European priority CWR taxa, showing the main crop use categories and related crops

Crop wild relative	Related crop use category	Related crop common name
<i>Crambe fruticosa</i> L. f.	Vegetables (green)	Ethiopian cabbage
<i>Crambe gomeraea</i> H. Christ	Vegetables (green)	Ethiopian cabbage
<i>Crambe hispanica</i> L.	Vegetables (green)	Ethiopian cabbage
<i>Crambe laevigata</i> DC. ex H. Christ	Vegetables (green)	Ethiopian cabbage
<i>Crambe microcarpa</i> A. Santos	Vegetables (green)	Ethiopian cabbage
<i>Crambe pritzelii</i> Bolle	Vegetables (green)	Ethiopian cabbage
<i>Crambe scaberrima</i> Bramwell	Vegetables (green)	Ethiopian cabbage
<i>Crambe scoparia</i> Svent.	Vegetables (green)	Ethiopian cabbage
<i>Crambe sventenii</i> B. Pett. ex Bramwell & Sundell	Vegetables (green)	Ethiopian cabbage
<i>Crambe tamadabensis</i> A. Prina & A. Marrero	Vegetables (green)	Ethiopian cabbage
<i>Crambe wildpretii</i> Prina & Bramwell	Vegetables (green)	Ethiopian cabbage
<i>Cucumis dipsaceus</i> Spach	Fruits	Melon
<i>Cucumis dipsaceus</i> Spach	Fruits (savoury)	West Indian gherkin
<i>Cucumis sativus</i> L.	Fruits (savoury)	Cucumber
<i>Cynara algarbiensis</i> Mariz	Vegetables (green)	Artichoke
<i>Cynara auranitica</i> Post	Vegetables (green)	Artichoke
<i>Cynara baetica</i> (Spreng.) Pau	Vegetables (green)	Artichoke
<i>Cynara baetica</i> (Spreng.) Pau subsp. <i>baetica</i>	Vegetables (green)	Artichoke
<i>Cynara cardunculus</i> L.	Vegetables (green)	Artichoke
<i>Cynara cardunculus</i> subsp. <i>flavescens</i> Wiklund	Vegetables (green)	Artichoke
<i>Cynara cardunculus</i> subsp. <i>zingaroensis</i> (Raimondo & Domina) Raimondo & Domina	Vegetables (green)	Artichoke
<i>Cynara humilis</i> L.	Vegetables (green)	Artichoke
<i>Cynara tournefortii</i> Boiss. & Reut.	Vegetables (green)	Artichoke
<i>Cynodon dactylon</i> (L.) Pers.	Fodder/forage	Bermuda grass
<i>Dactylis glomerata</i> L.	Fodder/forage	Cocksfoot
<i>Dactylis glomerata</i> L. subsp. <i>glomerata</i>	Fodder/forage	Cocksfoot
<i>Dactylis glomerata</i> subsp. <i>hackelii</i> (Asch. & Graebn.) Cif. & Giacom.	Fodder/forage	Cocksfoot

Table 5. European priority CWR taxa, showing the main crop use categories and related crops

Crop wild relative	Related crop use category	Related crop common name
<i>Dactylis glomerata</i> subsp. <i>hispanica</i> (Roth) Nyman	Fodder/forage	Cocksfoot
<i>Dactylis glomerata</i> subsp. <i>ibizensis</i> Stebbins & D. Zohary	Fodder/forage	Cocksfoot
<i>Dactylis glomerata</i> subsp. <i>izcoi</i> S. Ortíz & Rodr. Oubiña	Fodder/forage	Cocksfoot
<i>Dactylis glomerata</i> subsp. <i>juncinella</i> (Bory) K. Richt.	Fodder/forage	Cocksfoot
<i>Dactylis glomerata</i> subsp. <i>lobata</i> (Drejer) H. Lindb.	Fodder/forage	Cocksfoot
<i>Dactylis glomerata</i> subsp. <i>lusitanica</i> Stebbins & D. Zohary	Fodder/forage	Cocksfoot
<i>Dactylis glomerata</i> subsp. <i>merinoana</i> (Horjales & al.) H. Scholz	Fodder/forage	Cocksfoot
<i>Dactylis glomerata</i> subsp. <i>oceanica</i> G. Guignard	Fodder/forage	Cocksfoot
<i>Dactylis glomerata</i> subsp. <i>reichenbachii</i> (Dalla Torre & Sarnth.) Stebbins & D. Zohary	Fodder/forage	Cocksfoot
<i>Dactylis glomerata</i> subsp. <i>rigida</i> (Boiss. & Heldr.) Hayek	Fodder/forage	Cocksfoot
<i>Dactylis glomerata</i> subsp. <i>slovenica</i> (Domin) Domin	Fodder/forage	Cocksfoot
<i>Dactylis glomerata</i> subsp. <i>stebbinsii</i> (Horjales & al.) H. Scholz	Fodder/forage	Cocksfoot
<i>Daucus carota</i> L.	Vegetables (root)	Carrot
<i>Daucus carota</i> L. subsp. <i>carota</i>	Vegetables (root)	Carrot
<i>Daucus carota</i> subsp. <i>azoricus</i> Franco	Vegetables (root)	Carrot
<i>Daucus carota</i> subsp. <i>cantabricus</i> A. Pujadas	Vegetables (root)	Carrot
<i>Daucus carota</i> subsp. <i>commutatus</i> (Paol.) Thell.	Vegetables (root)	Carrot
<i>Daucus carota</i> subsp. <i>drepanensis</i> (Lojac.) Heywood	Vegetables (root)	Carrot
<i>Daucus carota</i> subsp. <i>gadecaei</i> (Rouy & E. G. Camus) Heywood	Vegetables (root)	Carrot
<i>Daucus carota</i> subsp. <i>gummifer</i> (Syme) Hook. f.	Vegetables (root)	Carrot
<i>Daucus carota</i> subsp. <i>halophilus</i> (Brot.) A. Pujadas	Vegetables (root)	Carrot
<i>Daucus carota</i> subsp. <i>hispanicus</i> (Gouan) Thell.	Vegetables (root)	Carrot
<i>Daucus carota</i> subsp. <i>hispidus</i> (Ball) Heywood	Vegetables (root)	Carrot
<i>Daucus carota</i> subsp. <i>major</i> (Vis.) Arcang.	Vegetables (root)	Carrot
<i>Daucus carota</i> subsp. <i>majoricus</i> A. Pujadas	Vegetables (root)	Carrot
<i>Daucus carota</i> subsp. <i>maximus</i> (Desf.) Ball	Vegetables (root)	Carrot
<i>Daucus carota</i> subsp. <i>rupestris</i> (Guss.) Heywood	Vegetables (root)	Carrot

Table 5. European priority CWR taxa, showing the main crop use categories and related crops

Crop wild relative	Related crop use category	Related crop common name
<i>Daucus carota</i> subsp. <i>sativus</i> (Hoffm.) Arcang.	Vegetables (root)	Carrot
<i>Daucus gracilis</i> Steinh.	Vegetables (root)	Carrot
<i>Daucus sahariensis</i> Murb.	Vegetables (root)	Carrot
<i>Diplotaxis eruroides</i> (L.) DC.	Oils/fodder	Rape
<i>Diplotaxis eruroides</i> (L.) DC.	Spices	Black mustard
<i>Diplotaxis eruroides</i> (L.) DC.	Spices/oils/vegetables (green)	Mustard
<i>Diplotaxis eruroides</i> (L.) DC.	Vegetables (green)	Cabbage
<i>Diplotaxis eruroides</i> (L.) DC.	Vegetables (root)/fodder	Turnip
<i>Diplotaxis eruroides</i> (L.) DC. subsp. <i>eruroides</i>	Oils/fodder	Rape
<i>Diplotaxis eruroides</i> (L.) DC. subsp. <i>eruroides</i>	Spices	Black mustard
<i>Diplotaxis eruroides</i> (L.) DC. subsp. <i>eruroides</i>	Spices/oils/vegetables (green)	Mustard
<i>Diplotaxis eruroides</i> (L.) DC. subsp. <i>eruroides</i>	Vegetables (green)	Cabbage
<i>Diplotaxis eruroides</i> (L.) DC. subsp. <i>eruroides</i>	Vegetables (root)/fodder	Turnip
<i>Diplotaxis muralis</i> (L.) DC.	Oils/fodder	Rape
<i>Diplotaxis muralis</i> (L.) DC.	Spices/oils/vegetables (green)	Mustard
<i>Diplotaxis muralis</i> (L.) DC.	Vegetables (root)/fodder	Turnip
<i>Diplotaxis siettiana</i> Maire	Oils/fodder	Rape
<i>Diplotaxis siettiana</i> Maire	Spices	Black mustard
<i>Diplotaxis siettiana</i> Maire	Spices/oils/vegetables (green)	Mustard
<i>Diplotaxis siettiana</i> Maire	Vegetables (green)	Cabbage
<i>Diplotaxis siettiana</i> Maire	Vegetables (root)/fodder	Turnip
<i>Diplotaxis siifolia</i> Kunze	Oils/fodder	Rape
<i>Diplotaxis siifolia</i> Kunze	Spices/oils/vegetables (green)	Mustard
<i>Diplotaxis siifolia</i> Kunze	Vegetables (root)/fodder	Turnip
<i>Diplotaxis siifolia</i> Kunze subsp. <i>siifolia</i>	Oils/fodder	Rape
<i>Diplotaxis siifolia</i> Kunze subsp. <i>siifolia</i>	Spices/oils/vegetables (green)	Mustard
<i>Diplotaxis siifolia</i> Kunze subsp. <i>siifolia</i>	Vegetables (root)/fodder	Turnip
<i>Diplotaxis siifolia</i> subsp. <i>vicentina</i> (Samp.) Mart.-Laborde	Oils/fodder	Rape

Table 5. European priority CWR taxa, showing the main crop use categories and related crops

Crop wild relative	Related crop use category	Related crop common name
<i>Diplotaxis siifolia</i> subsp. <i>vicentina</i> (Samp.) Mart.-Laborde	Spices/oils/vegetables (green)	Mustard
<i>Diplotaxis siifolia</i> subsp. <i>vicentina</i> (Samp.) Mart.-Laborde	Vegetables (root)/fodder	Turnip
<i>Diplotaxis tenuifolia</i> (L.) DC.	Oils/fodder	Rape
<i>Diplotaxis tenuifolia</i> (L.) DC.	Spices	Black mustard
<i>Diplotaxis tenuifolia</i> (L.) DC.	Spices/oils/vegetables (green)	Mustard
<i>Diplotaxis tenuifolia</i> (L.) DC.	Vegetables (green)	Kale
<i>Diplotaxis tenuifolia</i> (L.) DC.	Vegetables (root)/fodder	Turnip
<i>Diplotaxis tenuifolia</i> (L.) DC.	Vegetables (salad)	Perennial wall rocket
<i>Diplotaxis tenuifolia</i> (L.) DC.	Vegetables (salad)	Radish
<i>Diplotaxis tenuifolia</i> (L.) DC.	Vegetables (salad)	Salad rocket
<i>Echinochloa crus-galli</i> (L.) P. Beauv.	Cereals	Japanese barnyard millet
<i>Echinochloa crus-galli</i> (L.) P. Beauv. subsp. <i>crus-galli</i>	Cereals	Japanese barnyard millet
<i>Echinochloa crus-galli</i> subsp. <i>hispidula</i> (Retz.) Honda	Cereals	Japanese barnyard millet
<i>Echinochloa crus-galli</i> subsp. <i>spiralis</i> (Vasinger) Tzvelev	Cereals	Japanese barnyard millet
<i>Echinochloa oryzicola</i> (Vasinger) Vasinger	Cereals	Japanese barnyard millet
<i>Eleusine coracana</i> (L.) Gaertn.	Cereals	Finger millet
<i>Eleusine tristachya</i> (Lam.) Lam.	Cereals	Finger millet
<i>Elymus dahuricus</i> Turcz. ex Griseb.	Cereals	Wheat
<i>Elymus trachycaulus</i> (Link) Shinnars	Cereals	Wheat
<i>Elymus trachycaulus</i> (Link) Shinnars subsp. <i>trachycaulus</i>	Cereals	Wheat
<i>Elymus trachycaulus</i> subsp. <i>novae-angliae</i> (Scribn.) Tzvelev	Cereals	Wheat
<i>Elymus trachycaulus</i> subsp. <i>stefanssonii</i> (Melderis) Á. Löve & D. Löve	Cereals	Wheat
<i>Elytrigia bessarabica</i> (Sävil. & Rayss) Prokudin	Cereals	Wheat
<i>Elytrigia curvifolia</i> (Lange) Holub	Cereals	Wheat
<i>Elytrigia elongata</i> (Host) Nevski	Cereals	Wheat
<i>Elytrigia elongata</i> (Host) Nevski subsp. <i>elongata</i>	Cereals	Wheat
<i>Elytrigia elongata</i> subsp. <i>haifensis</i> (Rech. f.) Valdés & H. Scholz	Cereals	Wheat
<i>Elytrigia elongata</i> subsp. <i>salsa</i> (Melderis) Valdés & H. Scholz	Cereals	Wheat

Table 5. European priority CWR taxa, showing the main crop use categories and related crops

Crop wild relative	Related crop use category	Related crop common name
<i>Elytrigia elongata</i> subsp. <i>turcica</i> (McGuire) Valdés & H. Scholz	Cereals	Wheat
<i>Elytrigia intermedia</i> (Host) Nevski	Cereals	Intermediate wheatgrass
<i>Elytrigia intermedia</i> (Host) Nevski	Cereals	Wheat
<i>Elytrigia intermedia</i> (Host) Nevski subsp. <i>intermedia</i>	Cereals	Intermediate wheatgrass
<i>Elytrigia intermedia</i> subsp. <i>mucronata</i> (Bercht.) Valdés & H. Scholz	Cereals	Intermediate wheatgrass
<i>Elytrigia intermedia</i> subsp. <i>podperae</i> (Nábělek) Á. Löve	Cereals	Intermediate wheatgrass
<i>Elytrigia intermedia</i> subsp. <i>pouzolzii</i> (Godr.) Á. Löve	Cereals	Intermediate wheatgrass
<i>Elytrigia intermedia</i> subsp. <i>pulcherrima</i> (Grossh.) Tzvelev	Cereals	Intermediate wheatgrass
<i>Elytrigia intermedia</i> subsp. <i>trichophora</i> (Link) Á. Löve & D. Löve	Cereals	Intermediate wheatgrass
<i>Elytrigia intermedia</i> subsp. <i>varnensis</i> (Velen.) Valdés & H. Scholz	Cereals	Intermediate wheatgrass
<i>Elytrigia juncea</i> (L.) Nevski	Cereals	Wheat
<i>Elytrigia juncea</i> subsp. <i>boreoatlantica</i> (Simonet & Guin.) Hyl.	Cereals	Wheat
<i>Elytrigia obtusiflora</i> (DC.) Tzvelev	Cereals	Wheat
<i>Elytrigia scirpea</i> (C. Presl) Holub	Cereals	Wheat
<i>Eragrostis pilosa</i> (L.) P. Beauv.	Cereals	Teff
<i>Eragrostis tef</i> (Zuccagni) Trotter	Cereals	Teff
<i>Eruca vesicaria</i> (L.) Cav.	Oils/fodder	Rape
<i>Eruca vesicaria</i> (L.) Cav.	Spices/oils/vegetables (green)	Mustard
<i>Eruca vesicaria</i> (L.) Cav.	Vegetables (green)	Cabbage
<i>Eruca vesicaria</i> (L.) Cav.	Vegetables (root)/fodder	Turnip
<i>Eruca vesicaria</i> (L.) Cav.	Vegetables (salad)	Radish
<i>Eruca vesicaria</i> (L.) Cav.	Vegetables (salad)	Salad rocket
<i>Erucastrum canariense</i> Webb & Berthel.	Vegetables (root)/fodder	Turnip
<i>Erucastrum gallicum</i> (Willd.) O. E. Schulz	Oils/fodder	Rape
<i>Erucastrum gallicum</i> (Willd.) O. E. Schulz	Spices/oils/vegetables (green)	Mustard
<i>Erucastrum gallicum</i> (Willd.) O. E. Schulz	Vegetables (green)	Ethiopian cabbage
<i>Erucastrum gallicum</i> (Willd.) O. E. Schulz	Vegetables (root)/fodder	Turnip
<i>Festuca heterophylla</i> Lam.	Fodder/forage	Shade fescue

Table 5. European priority CWR taxa, showing the main crop use categories and related crops

Crop wild relative	Related crop use category	Related crop common name
<i>Festuca ovina</i> L.	Fodder/forage	Fine leaved sheep's fescue
<i>Festuca ovina</i> L. subsp. <i>ovina</i>	Fodder/forage	Fine leaved sheep's fescue
<i>Festuca ovina</i> subsp. <i>firmulacea</i> (Markgr.-Dann.) Prob.	Fodder/forage	Fine leaved sheep's fescue
<i>Festuca ovina</i> subsp. <i>guestfalica</i> (Rchb.) K. Richt.	Fodder/forage	Fine leaved sheep's fescue
<i>Festuca ovina</i> subsp. <i>hirtula</i> (Travis) M. J. Wilk.	Fodder/forage	Fine leaved sheep's fescue
<i>Festuca ovina</i> subsp. <i>molinieri</i> (Litard.) Foggì & J. Müll.	Fodder/forage	Fine leaved sheep's fescue
<i>Festuca ovina</i> subsp. <i>ophiolicola</i> (Kerguélen) M. Wilk.	Fodder/forage	Fine leaved sheep's fescue
<i>Festuca ovina</i> subsp. <i>ruprechtii</i> (Boiss.) Tzvelev	Fodder/forage	Fine leaved sheep's fescue
<i>Festuca ovina</i> subsp. <i>supina</i> (Schur) Oborný	Fodder/forage	Fine leaved sheep's fescue
<i>Festuca rubra</i> L.	Fodder/forage	Red fescue
<i>Festuca rubra</i> L. subsp. <i>rubra</i>	Fodder/forage	Red fescue
<i>Festuca rubra</i> subsp. <i>juncea</i> (Hack.) K. Richt.	Fodder/forage	Red fescue
<i>Festuca rubra</i> subsp. <i>litoralis</i> (G. Mey.) Auquier	Fodder/forage	Red fescue
<i>Festuca rubra</i> subsp. <i>pruinosa</i> (Hack.) Piper	Fodder/forage	Red fescue
<i>Festuca rubra</i> subsp. <i>scotica</i> Al-Bermani	Fodder/forage	Red fescue
<i>Festuca rubra</i> subsp. <i>thessalica</i> Markgr.-Dann.	Fodder/forage	Red fescue
<i>Ficus carica</i> L.	Fruits	Fig
<i>Ficus carica</i> subsp. <i>rupestris</i> (Boiss.) Browicz	Fruits	Fig
<i>Fragaria chiloensis</i> (L.) Weston	Fruits	Strawberry
<i>Fragaria moschata</i> Weston	Fruits	Strawberry
<i>Fragaria vesca</i> L.	Fruits	Strawberry
<i>Fragaria virginiana</i> Mill.	Fruits	Strawberry
<i>Fragaria viridis</i> subsp. <i>campestris</i> (Steven) Pawł.	Fruits	Strawberry
<i>Fragaria viridis</i> Weston	Fruits	Strawberry
<i>Fragaria viridis</i> Weston subsp. <i>viridis</i>	Fruits	Strawberry
<i>Galega orientalis</i> Lam.	Fodder/forage	Fodder galega
<i>Hedysarum coronarium</i> L.	Fodder/forage	Sulla
<i>Helianthus annuus</i> L.	Seeds/oils	Sunflower seed

Table 5. European priority CWR taxa, showing the main crop use categories and related crops

Crop wild relative	Related crop use category	Related crop common name
<i>Helianthus debilis</i> Nutt.	Seeds/oils	Sunflower seed
<i>Helianthus decapetalus</i> L.	Seeds/oils	Sunflower seed
<i>Helianthus giganteus</i> L.	Seeds/oils	Sunflower seed
<i>Helianthus pauciflorus</i> Nutt.	Seeds/oils	Sunflower seed
<i>Helianthus petiolaris</i> Nutt.	Seeds/oils	Sunflower seed
<i>Helianthus strumosus</i> L.	Seeds/oils	Sunflower seed
<i>Hordeum brevisubulatum</i> (Trin.) Link	Cereals	Barley
<i>Hordeum brevisubulatum</i> (Trin.) Link subsp. <i>brevisubulatum</i>	Cereals	Barley
<i>Hordeum brevisubulatum</i> subsp. <i>nevskianum</i> (Bowden) Tzvelev	Cereals	Barley
<i>Hordeum brevisubulatum</i> subsp. <i>turkestanicum</i> (Nevski) Tzvelev	Cereals	Barley
<i>Hordeum brevisubulatum</i> subsp. <i>violaceum</i> (Boiss. & Hohen.) Tzvelev	Cereals	Barley
<i>Hordeum bulbosum</i> L.	Cereals	Barley
<i>Hordeum bulbosum</i> L. subsp. <i>bulbosum</i>	Cereals	Barley
<i>Hordeum bulbosum</i> subsp. <i>nodosum</i> (L.) B. R. Baum	Cereals	Barley
<i>Hordeum jubatum</i> L.	Cereals	Barley
<i>Hordeum marinum</i> Huds.	Cereals	Wheat
<i>Hordeum vulgare</i> L.	Cereals	Barley
<i>Hordeum vulgare</i> L. subsp. <i>vulgare</i>	Cereals	Barley
<i>Hordeum vulgare</i> subsp. <i>aegiceras</i> (Nees ex Royle) Á. Löve	Cereals	Barley
<i>Hordeum vulgare</i> subsp. <i>agriocrithon</i> (Åberg) Á. Löve & D. Löve	Cereals	Barley
<i>Hordeum vulgare</i> subsp. <i>distichon</i> (L.) Körn.	Cereals	Barley
<i>Hordeum vulgare</i> subsp. <i>spontaneum</i> (K. Koch) Thell.	Cereals	Barley
<i>Humulus lupulus</i> L.	Beverages	Hop
<i>Juglans ailantifolia</i> Carrière	Nuts	Black walnut
<i>Juglans ailantifolia</i> Carrière	Nuts	English walnut
<i>Juglans ailantifolia</i> Carrière	Nuts	Japanese walnut
<i>Juglans cinerea</i> L.	Nuts	Japanese walnut
<i>Juglans mandshurica</i> Maxim.	Fruits (savoury)	Butternut

Table 5. European priority CWR taxa, showing the main crop use categories and related crops

Crop wild relative	Related crop use category	Related crop common name
<i>Juglans mandshurica</i> Maxim.	Nuts	English walnut
<i>Juglans mandshurica</i> Maxim.	Nuts	Japanese walnut
<i>Juglans nigra</i> L.	Nuts	Black walnut
<i>Juglans nigra</i> L.	Nuts	English walnut
<i>Juglans nigra</i> L.	Nuts	Japanese walnut
<i>Juglans regia</i> L.	Nuts	Black walnut
<i>Juglans regia</i> L.	Nuts	English walnut
<i>Juglans regia</i> L.	Nuts	Japanese walnut
<i>Lactuca aculeata</i> Boiss. & Kotschy	Vegetables (salad)	Lettuce
<i>Lactuca alpestris</i> (Gand.) Rech. f.	Vegetables (salad)	Lettuce
<i>Lactuca cyprica</i> (Rech. f.) N. Kilian & Greuter	Vegetables (salad)	Lettuce
<i>Lactuca georgica</i> Grossh.	Vegetables (salad)	Lettuce
<i>Lactuca saligna</i> L.	Vegetables (salad)	Lettuce
<i>Lactuca scarioloides</i> Boiss.	Vegetables (salad)	Lettuce
<i>Lactuca serriola</i> L.	Vegetables (salad)	Lettuce
<i>Lactuca singularis</i> Wilmott	Vegetables (salad)	Lettuce
<i>Lactuca tetrantha</i> B. L. Burtt & P. H. Davis	Vegetables (salad)	Lettuce
<i>Lactuca virosa</i> L.	Vegetables (salad)	Lettuce
<i>Lactuca virosa</i> subsp. <i>livida</i> (Boiss. & Reut.) Ladero & A. Velasco	Vegetables (salad)	Lettuce
<i>Lactuca watsoniana</i> Trel.	Vegetables (salad)	Lettuce
<i>Lathyrus amphicarpos</i> L.	Fodder/forage	Chickling vetch/flat pod peavine
<i>Lathyrus amphicarpos</i> L.	Fodder/forage	Grass pea/common chickling
<i>Lathyrus annuus</i> L.	Fodder/forage	Chickling vetch/flat pod peavine
<i>Lathyrus blepharicarpus</i> Boiss.	Fodder/forage	Chickling vetch/flat pod peavine
<i>Lathyrus blepharicarpus</i> Boiss.	Fodder/forage	Grass pea/common chickling

Table 5. European priority CWR taxa, showing the main crop use categories and related crops

Crop wild relative	Related crop use category	Related crop common name
Lathyrus cassius Boiss.	Fodder/forage	Chickling vetch/flat pod peavine
Lathyrus chloranthus Boiss.	Fodder/forage	Chickling vetch/flat pod peavine
Lathyrus chloranthus Boiss.	Fodder/forage	Grass pea/common chickling
Lathyrus cicera L.	Fodder/forage	Chickling vetch
Lathyrus cicera L.	Fodder/forage	Chickling vetch/flat pod peavine
Lathyrus cicera L.	Fodder/forage	Grass pea/common chickling
Lathyrus cirrhosus Ser.	Fodder/forage	Chickling vetch/flat pod peavine
Lathyrus clymenum L.	Fodder/forage	Cyprus vetch/ochrus chickling
Lathyrus clymenum L.	Pulses	Garden pea
Lathyrus gorgoni Parl.	Fodder/forage	Chickling vetch/flat pod peavine
Lathyrus gorgoni Parl.	Fodder/forage	Grass pea/common chickling
Lathyrus grandiflorus Sibth. & Sm.	Fodder/forage	Chickling vetch/flat pod peavine
Lathyrus heterophyllus L.	Fodder/forage	Chickling vetch/flat pod peavine
Lathyrus hierosolymitanus Boiss.	Fodder/forage	Chickling vetch/flat pod peavine
Lathyrus hierosolymitanus Boiss.	Fodder/forage	Grass pea/common chickling
Lathyrus hirsutus L.	Fodder/forage	Chickling vetch/flat pod peavine
Lathyrus hirsutus L.	Fodder/forage	Grass pea/common chickling
Lathyrus hirsutus L.	Fodder/forage	Hairy vetchling
Lathyrus latifolius L.	Fodder/forage	Chickling vetch/flat pod peavine

Table 5. European priority CWR taxa, showing the main crop use categories and related crops

Crop wild relative	Related crop use category	Related crop common name
Lathyrus latifolius L. var. latifolius	Fodder/forage	Chickling vetch/flat pod peavine
Lathyrus ochrus (L.) DC.	Fodder/forage	Cyprus vetch/ochrus chickling
Lathyrus ochrus (L.) DC.	Fodder/forage	Winged vetchling
Lathyrus ochrus (L.) DC.	Pulses	Garden pea
Lathyrus odoratus L.	Fodder/forage	Sweet pea
Lathyrus rotundifolius Willd.	Fodder/forage	Chickling vetch/flat pod peavine
Lathyrus sativus L.	Fodder/forage	Grass pea/common chickling
Lathyrus sativus L.	Pulses	Garden pea
Lathyrus stenophyllus Boiss. & Heldr.	Fodder/forage	Chickling vetch/flat pod peavine
Lathyrus sylvestris L.	Fodder/forage	Chickling vetch/flat pod peavine
Lathyrus tingitanus L.	Fodder/forage	Chickling vetch/flat pod peavine
Lathyrus tuberosus L.	Fodder/forage	Chickling vetch/flat pod peavine
Lathyrus undulatus Boiss.	Fodder/forage	Chickling vetch/flat pod peavine
Lens culinaris Medik.	Pulses	Lentil
Lens culinaris Medik. subsp. culinaris	Pulses	Lentil
Lens culinaris subsp. odemensis (Ladiz.) M. E. Ferguson & al.	Pulses	Lentil
Lens culinaris subsp. orientalis (Boiss.) Ponert	Pulses	Lentil
Lens ervoides (Brign.) Grande	Pulses	Lentil
Lens lamottei Czefr.	Pulses	Lentil
Lens nigricans (M. Bieb.) Godr.	Pulses	Lentil
Lepidium meyeri subsp. turczaninowii (Lipsky) Schmalh.	Vegetables (salad)	Garden cress
Lepidium sativum L.	Vegetables (salad)	Garden cress

Table 5. European priority CWR taxa, showing the main crop use categories and related crops

Crop wild relative	Related crop use category	Related crop common name
<i>Lepidium sativum</i> L. subsp. <i>sativum</i>	Vegetables (salad)	Garden cress
<i>Leymus angustus</i> (Trin.) Pilg.	Cereals	Wheat
<i>Leymus arenarius</i> (L.) Hochst.	Cereals	Wheat
<i>Leymus mollis</i> (Trin.) H. Hara	Cereals	Wheat
<i>Leymus racemosus</i> (Lam.) Tzvelev	Cereals	Wheat
<i>Leymus racemosus</i> (Lam.) Tzvelev subsp. <i>racemosus</i>	Cereals	Wheat
<i>Leymus racemosus</i> subsp. <i>klokovii</i> Tzvelev	Cereals	Wheat
<i>Leymus racemosus</i> subsp. <i>sabulosus</i> (M. Bieb.) Tzvelev	Cereals	Wheat
<i>Linum bienne</i> Mill.	Seeds/oils	Linseed
<i>Linum corymbiferum</i> Desf.	Seeds/oils	Linseed
<i>Linum decumbens</i> Desf.	Seeds/oils	Linseed
<i>Linum hirsutum</i> L.	Seeds/oils	Linseed
<i>Linum hirsutum</i> L. subsp. <i>hirsutum</i>	Seeds/oils	Linseed
<i>Linum hirsutum</i> subsp. <i>anatolicum</i> (Boiss.) Hayek	Seeds/oils	Linseed
<i>Linum hirsutum</i> subsp. <i>bozdaghense</i> Yilmaz & Kaynak	Seeds/oils	Linseed
<i>Linum hirsutum</i> subsp. <i>byzantinum</i> Azn.	Seeds/oils	Linseed
<i>Linum hirsutum</i> subsp. <i>glabrescens</i> (Rochel) Soó	Seeds/oils	Linseed
<i>Linum hirsutum</i> subsp. <i>oreocaricum</i> P. H. Davis	Seeds/oils	Linseed
<i>Linum hirsutum</i> subsp. <i>platyphyllum</i> (P. H. Davis) Yilmaz & Kaynak	Seeds/oils	Linseed
<i>Linum hirsutum</i> subsp. <i>pseudoanatolicum</i> P. H. Davis	Seeds/oils	Linseed
<i>Linum hirsutum</i> subsp. <i>spathulatum</i> (Halácsy & Bald.) Hayek	Seeds/oils	Linseed
<i>Linum nervosum</i> subsp. <i>jailicola</i> (Juz.) T. V. Egorova	Seeds/oils	Linseed
<i>Linum nervosum</i> Waldst. & Kit.	Seeds/oils	Linseed
<i>Lolium multiflorum</i> Lam.	Fodder/forage	Italian ryegrass
<i>Lolium perenne</i> L.	Fodder/forage	Perennial ryegrass
<i>Lolium perenne</i> L. subsp. <i>perenne</i>	Fodder/forage	Perennial ryegrass
<i>Lolium rigidum</i> Gaudin	Fodder/forage	Annual ryegrass
<i>Lolium rigidum</i> Gaudin subsp. <i>rigidum</i>	Fodder/forage	Annual ryegrass

Table 5. European priority CWR taxa, showing the main crop use categories and related crops

Crop wild relative	Related crop use category	Related crop common name
<i>Lolium rigidum</i> subsp. <i>lepturoides</i> Sennen & Mauricio	Fodder/forage	Annual ryegrass
<i>Lolium temulentum</i> L.	Fodder/forage	Bearded ryegrass
<i>Lotus corniculatus</i> L.	Fodder/forage	Birdsfoot trefoil
<i>Lotus corniculatus</i> subsp. <i>frondosus</i> Freyn	Fodder/forage	Birdsfoot trefoil
<i>Lotus pedunculatus</i> Cav.	Fodder/forage	Greater birdsfoot trefoil
<i>Lotus subbiflorus</i> Lag.	Fodder/forage	Hairy birdsfoot trefoil
<i>Lupinus albus</i> L.	Fodder/forage	Andean lupin
<i>Lupinus albus</i> L.	Fodder/forage	White lupin
<i>Lupinus albus</i> L. subsp. <i>albus</i>	Fodder/forage	Andean lupin
<i>Lupinus albus</i> L. subsp. <i>albus</i>	Fodder/forage	White lupin
<i>Lupinus albus</i> subsp. <i>graecus</i> (Boiss. & Spruner) Franco & P. Silva	Fodder/forage	Andean lupin
<i>Lupinus albus</i> subsp. <i>graecus</i> (Boiss. & Spruner) Franco & P. Silva	Fodder/forage	White lupin
<i>Lupinus angustifolius</i> L.	Fodder/forage	Blue lupin
<i>Lupinus angustifolius</i> L.	Fodder/forage	Narrow leaved lupin
<i>Lupinus angustifolius</i> L.	Fodder/forage	Yellow lupin
<i>Lupinus angustifolius</i> L. subsp. <i>angustifolius</i>	Fodder/forage	Blue lupin
<i>Lupinus angustifolius</i> L. subsp. <i>angustifolius</i>	Fodder/forage	Yellow lupin
<i>Lupinus angustifolius</i> subsp. <i>reticulatus</i> (Desv.) Arcang.	Fodder/forage	Blue lupin
<i>Lupinus angustifolius</i> subsp. <i>reticulatus</i> (Desv.) Arcang.	Fodder/forage	Yellow lupin
<i>Lupinus cosentinii</i> Guss.	Fodder/forage	Sandplain lupin
<i>Lupinus hispanicus</i> Boiss. & Reut.	Fodder/forage	Blue lupin
<i>Lupinus hispanicus</i> Boiss. & Reut.	Fodder/forage	Yellow lupin
<i>Lupinus hispanicus</i> var. <i>bicolor</i> (Merino) Gladst.	Fodder/forage	Blue lupin
<i>Lupinus luteus</i> L.	Fodder/forage	Blue lupin
<i>Lupinus luteus</i> L.	Fodder/forage	Yellow lupin
<i>Lupinus micranthus</i> Guss.	Fodder/forage	White lupin
<i>Lupinus pilosus</i> L.	Fodder/forage	Sandplain lupin
<i>Malus crescimannoi</i> Raimondo	Fruits	Apple

Table 5. European priority CWR taxa, showing the main crop use categories and related crops

Crop wild relative	Related crop use category	Related crop common name
<i>Malus pumila</i> Mill.	Fruits	Apple
<i>Malus sylvestris</i> (L.) Mill.	Fruits	Apple
<i>Malus sylvestris</i> (L.) Mill. subsp. <i>sylvestris</i>	Fruits	Apple
<i>Malus sylvestris</i> subsp. <i>orientalis</i> (Uglitzk.) Browicz	Fruits	Apple
<i>Malus sylvestris</i> subsp. <i>praecox</i> (Pall.) Soó	Fruits	Apple
<i>Medicago arborea</i> L.	Fodder/forage	Alfalfa
<i>Medicago arborea</i> L.	Fodder/forage	Tree medic
<i>Medicago cancellata</i> M. Bieb.	Fodder/forage	Alfalfa
<i>Medicago constricta</i> Durieu	Fodder/forage	Barrel medic
<i>Medicago cretacea</i> M. Bieb.	Fodder/forage	Alfalfa
<i>Medicago cretacea</i> M. Bieb.	Fodder/forage	Barrel medic
<i>Medicago doliata</i> Carmign.	Fodder/forage	Barrel medic
<i>Medicago doliata</i> Carmign.	Fodder/forage	Straight-spined medic
<i>Medicago falcata</i> L.	Fodder/forage	Alfalfa
<i>Medicago falcata</i> L.	Fodder/forage	Yellow lucerne
<i>Medicago fischeriana</i> (Ser.) Trautv.	Fodder/forage	Alfalfa
<i>Medicago fischeriana</i> (Ser.) Trautv.	Fodder/forage	Barrel medic
<i>Medicago glomerata</i> Balb.	Fodder/forage	Alfalfa
<i>Medicago heyniana</i> Greuter	Fodder/forage	Alfalfa
<i>Medicago heyniana</i> Greuter	Fodder/forage	Barrel medic
<i>Medicago hypogaea</i> E. Small	Fodder/forage	Alfalfa
<i>Medicago hypogaea</i> E. Small	Fodder/forage	Barrel medic
<i>Medicago littoralis</i> Loisel.	Fodder/forage	Barrel medic
<i>Medicago littoralis</i> Loisel.	Fodder/forage	Shore medic
<i>Medicago lupulina</i> L.	Fodder/forage	Trefoil
<i>Medicago lupulina</i> var. <i>cupaniana</i> (Guss.) Boiss.	Fodder/forage	Trefoil
<i>Medicago marina</i> L.	Fodder/forage	Alfalfa
<i>Medicago murex</i> Willd.	Fodder/forage	Alfalfa

Table 5. European priority CWR taxa, showing the main crop use categories and related crops

Crop wild relative	Related crop use category	Related crop common name
<i>Medicago murex</i> Willd.	Fodder/forage	Sphere medic
<i>Medicago papillosa</i> Boiss.	Fodder/forage	Alfalfa
<i>Medicago pironae</i> Vis.	Fodder/forage	Alfalfa
<i>Medicago polymorpha</i> L.	Fodder/forage	Bur medic
<i>Medicago prostrata</i> Jacq.	Fodder/forage	Alfalfa
<i>Medicago rigidula</i> (L.) All.	Fodder/forage	Barrel medic
<i>Medicago rigidula</i> (L.) All.	Fodder/forage	Field medic
<i>Medicago rugosa</i> Desr.	Fodder/forage	Alfalfa
<i>Medicago rugosa</i> Desr.	Fodder/forage	Wrinkled/gama medic
<i>Medicago rupestris</i> M. Bieb.	Fodder/forage	Alfalfa
<i>Medicago sativa</i> L.	Fodder/forage	Lucerne
<i>Medicago sativa</i> L. subsp. <i>sativa</i>	Fodder/forage	Alfalfa
<i>Medicago sativa</i> nothosubsp. <i>varia</i> (Martyn) Arcang.	Fodder/forage	Alfalfa
<i>Medicago sativa</i> nothosubsp. <i>varia</i> (Martyn) Arcang.	Fodder/forage	Sand lucerne
<i>Medicago sativa</i> subsp. <i>microcarpa</i> Urb.	Fodder/forage	Alfalfa
<i>Medicago scutellata</i> (L.) Mill.	Fodder/forage	Barrel medic
<i>Medicago scutellata</i> (L.) Mill.	Fodder/forage	Snail medic
<i>Medicago soleirolii</i> Duby	Fodder/forage	Alfalfa
<i>Medicago strasseri</i> Greuter & al.	Fodder/forage	Alfalfa
<i>Medicago strasseri</i> Greuter & al.	Fodder/forage	Barrel medic
<i>Medicago tornata</i> subsp. <i>helix</i> (Willd.) Ooststr. & Reichg.	Fodder/forage	Barrel medic
<i>Medicago tornata</i> subsp. <i>helix</i> (Willd.) Ooststr. & Reichg.	Fodder/forage	Disc medic
<i>Medicago truncatula</i> Gaertn.	Fodder/forage	Barrel clover
<i>Medicago truncatula</i> Gaertn.	Fodder/forage	Barrel medic
<i>Medicago turbinata</i> (L.) All.	Fodder/forage	Barrel medic
<i>Melilotus albus</i> Medik.	Fodder/forage	Honey clover
<i>Melilotus officinalis</i> (L.) Lam.	Fodder/forage	Yellow sweet clover
<i>Mentha suaveolens</i> Ehrh.	Herbs	Peppermint

Table 5. European priority CWR taxa, showing the main crop use categories and related crops

Crop wild relative	Related crop use category	Related crop common name
<i>Mentha suaveolens</i> Ehrh. subsp. <i>suaveolens</i>	Herbs	Peppermint
<i>Mentha suaveolens</i> subsp. <i>insularis</i> (Req. ex Gren. & Godr.) Greuter	Herbs	Peppermint
<i>Moricandia arvensis</i> (L.) DC.	Oils/fodder	Rape
<i>Moricandia arvensis</i> (L.) DC.	Spices/oils/vegetables (green)	Mustard
<i>Moricandia arvensis</i> (L.) DC.	Vegetables (green)	Cabbage
<i>Moricandia arvensis</i> (L.) DC.	Vegetables (salad)	Radish
<i>Myrtus communis</i> L.	Fruits	Myrtle berry
<i>Myrtus communis</i> L. subsp. <i>communis</i>	Fruits	Myrtle berry
<i>Myrtus communis</i> subsp. <i>tarentina</i> (L.) Nyman	Fruits	Myrtle berry
<i>Ochlopoa annua</i> (L.) H. Scholz	Fodder/forage	Annual meadowgrass
<i>Ochlopoa annua</i> (L.) H. Scholz subsp. <i>annua</i>	Fodder/forage	Annual meadowgrass
<i>Ochlopoa annua</i> subsp. <i>notabilis</i> (Chrtek & V. Jirásek) H. Scholz & Valdés	Fodder/forage	Annual meadowgrass
<i>Ochlopoa annua</i> subsp. <i>pilantha</i> (Ronniger) H. Scholz & Valdés	Fodder/forage	Annual meadowgrass
<i>Ochlopoa annua</i> subsp. <i>raniglumis</i> (E. Fröhner) H. Scholz & Valdés	Fodder/forage	Annual meadowgrass
<i>Olea europaea</i> L. subsp. <i>europaea</i>	Fruits/oils	Olive
<i>Olea europaea</i> subsp. <i>cerasiformis</i> G. Kunkel & Sunding	Fruits/oils	Olive
<i>Olea europaea</i> subsp. <i>guanchica</i> P. Vargas & al.	Fruits/oils	Olive
<i>Onobrychis viciifolia</i> Scop.	Fodder/forage	Sainfoin
<i>Ornithopus compressus</i> L.	Fodder/forage	Yellow serradella
<i>Ornithopus sativus</i> Brot.	Fodder/forage	Serradella
<i>Ornithopus sativus</i> subsp. <i>isthmocarpus</i> (Coss.) Dostál	Fodder/forage	Serradella
<i>Oryza rufipogon</i> Griff.	Cereals	Rice
<i>Panicum miliaceum</i> L. subsp. <i>miliaceum</i>	Cereals	Proso millet
<i>Panicum miliaceum</i> subsp. <i>agricolum</i> H. Scholz & Mikoláš	Cereals	Proso millet
<i>Panicum miliaceum</i> subsp. <i>ruderales</i> (Kitag.) Tzvelev	Cereals	Proso millet
<i>Papaver somniferum</i> L.	Oils/spices	Poppy seed
<i>Patellifolia procumbens</i> (C. Sm.) A. J. Scott & al.	Sugar/fodder/vegetables (green)	Sugarbeet

Table 5. European priority CWR taxa, showing the main crop use categories and related crops

Crop wild relative	Related crop use category	Related crop common name
<i>Phalaris aquatica</i> L.	Fodder/forage	Harding grass
<i>Phalaris canariensis</i> L.	Fodder/forage	Canary grass
<i>Phalaroides arundinacea</i> (L.) Rauschert	Fodder/forage	Reed canary grass
<i>Phalaroides arundinacea</i> (L.) Rauschert subsp. <i>arundinacea</i>	Fodder/forage	Reed canary grass
<i>Phalaroides arundinacea</i> subsp. <i>oehleri</i> (Pilg.) Valdés & H. Scholz	Fodder/forage	Reed canary grass
<i>Phalaroides arundinacea</i> subsp. <i>rotgesii</i> (Husn.) Valdés & H. Scholz	Fodder/forage	Reed canary grass
<i>Phleum nodosum</i> L.	Fodder/forage	Small timothy
<i>Phleum pratense</i> L.	Fodder/forage	Timothy
<i>Phleum pratense</i> L. subsp. <i>pratense</i>	Fodder/forage	Timothy
<i>Phleum pratense</i> subsp. <i>brachystachyum</i> (Salis) Gamisans	Fodder/forage	Timothy
<i>Phoenix canariensis</i> Chabaud	Fruits/oils	Date
<i>Phoenix dactylifera</i> L.	Fruits/oils	Date
<i>Phoenix theophrasti</i> Greuter	Fruits/oils	Date
<i>Pistacia atlantica</i> Desf.	Nuts	Pistachio
<i>Pistacia atlantica</i> subsp. <i>cypricola</i> H. Lindb.	Nuts	Pistachio
<i>Pistacia atlantica</i> subsp. <i>mutica</i> (Fisch. & C. A. Mey.) Rech. f.	Nuts	Pistachio
<i>Pistacia eurycarpa</i> Yalt.	Nuts	Pistachio
<i>Pistacia khinjuk</i> Stocks	Nuts	Pistachio
<i>Pistacia lentiscus</i> L.	Nuts	Pistachio
<i>Pistacia terebinthus</i> L.	Nuts	Pistachio
<i>Pistacia terebinthus</i> L. subsp. <i>terebinthus</i>	Nuts	Pistachio
<i>Pistacia terebinthus</i> subsp. <i>palaestina</i> (Boiss.) Engl.	Nuts	Pistachio
<i>Pisum fulvum</i> Sm.	Pulses	Garden pea
<i>Pisum sativum</i> L. subsp. <i>sativum</i>	Pulses	Garden pea
<i>Pisum sativum</i> subsp. <i>elatius</i> (M. Bieb.) Asch. & Graebn.	Pulses	Garden pea
<i>Plantago lanceolata</i> L.	Fodder/forage	Ribwort plantain
<i>Poa alpina</i> L.	Fodder/forage	Alpine bluegrass
<i>Poa alpina</i> L. subsp. <i>alpina</i>	Fodder/forage	Alpine bluegrass

Table 5. European priority CWR taxa, showing the main crop use categories and related crops

Crop wild relative	Related crop use category	Related crop common name
<i>Poa alpina</i> subsp. <i>brevifolia</i> Gaudin	Fodder/forage	Alpine bluegrass
<i>Poa palustris</i> L.	Fodder/forage	Swamp meadowgrass
<i>Poa palustris</i> L. subsp. <i>palustris</i>	Fodder/forage	Swamp meadowgrass
<i>Poa palustris</i> subsp. <i>volhynensis</i> (Klokov) Tzvelev	Fodder/forage	Swamp meadowgrass
<i>Poa pratensis</i> L.	Fodder/forage	Smooth-stalked meadowgrass
<i>Poa pratensis</i> L. subsp. <i>pratensis</i>	Fodder/forage	Smooth-stalked meadowgrass
<i>Poa pratensis</i> subsp. <i>colpodea</i> (Th. Fr.) Tzvelev	Fodder/forage	Smooth-stalked meadowgrass
<i>Poa pratensis</i> subsp. <i>dolichophylla</i> (Hack.) Portal	Fodder/forage	Smooth-stalked meadowgrass
<i>Poa pratensis</i> subsp. <i>irrigata</i> (Lindm.) H. Lindb.	Fodder/forage	Smooth-stalked meadowgrass
<i>Poa pratensis</i> subsp. <i>jordanii</i> Portal	Fodder/forage	Smooth-stalked meadowgrass
<i>Poa pratensis</i> subsp. <i>rigens</i> (Hartm.) Tzvelev	Fodder/forage	Smooth-stalked meadowgrass
<i>Poa pratensis</i> subsp. <i>turfosa</i> (Litv.) Vorosch.	Fodder/forage	Smooth-stalked meadowgrass
<i>Poa trivialis</i> L.	Fodder/forage	Rough-stalked meadowgrass
<i>Poa trivialis</i> L. subsp. <i>trivialis</i>	Fodder/forage	Rough-stalked meadowgrass
<i>Poa trivialis</i> subsp. <i>latifolia</i> (Schur) Portal	Fodder/forage	Rough-stalked meadowgrass
<i>Poa trivialis</i> subsp. <i>semineutra</i> (Willd.) Portal	Fodder/forage	Rough-stalked meadowgrass
<i>Poa trivialis</i> subsp. <i>sylvicola</i> (Guss.) H. Lindb.	Fodder/forage	Rough-stalked meadowgrass
<i>Prunus arabica</i> (Olivier) Meikle	Nuts	Almond
<i>Prunus argentea</i> (Lam.) Rehder	Fruits	Peach
<i>Prunus argentea</i> (Lam.) Rehder	Nuts	Almond
<i>Prunus armeniaca</i> L.	Fruits	Apricot
<i>Prunus armeniaca</i> L.	Fruits	Japanese plum
<i>Prunus armeniaca</i> L.	Fruits	Peach
<i>Prunus armeniaca</i> L.	Fruits	Plum
<i>Prunus avium</i> (L.) L.	Fruits	Sour cherry
<i>Prunus avium</i> (L.) L.	Fruits	Sweet cherry
<i>Prunus brigantina</i> Vill.	Fruits	Apricot
<i>Prunus brigantina</i> Vill.	Fruits	Peach

Table 5. European priority CWR taxa, showing the main crop use categories and related crops

Crop wild relative	Related crop use category	Related crop common name
<i>Prunus brigantina</i> Vill.	Fruits	Plum
<i>Prunus brigantina</i> Vill.	Nuts	Almond
<i>Prunus carduchorum</i> (Bornm.) Meikle	Nuts	Almond
<i>Prunus cerasifera</i> Ehrh.	Fruits	Apricot
<i>Prunus cerasifera</i> Ehrh.	Fruits	Japanese plum
<i>Prunus cerasifera</i> Ehrh.	Fruits	Myrobalan plum
<i>Prunus cerasifera</i> Ehrh.	Fruits	Peach
<i>Prunus cerasifera</i> Ehrh.	Fruits	Plum
<i>Prunus cerasifera</i> Ehrh.	Nuts	Almond
<i>Prunus discolor</i> (Spach) C. K. Schneid.	Nuts	Almond
<i>Prunus dulcis</i> (Mill.) D. A. Webb	Fruits	Peach
<i>Prunus dulcis</i> (Mill.) D. A. Webb	Nuts	Almond
<i>Prunus fenzliana</i> R. M. Fritsch	Fruits	Peach
<i>Prunus fenzliana</i> R. M. Fritsch	Nuts	Almond
<i>Prunus fruticosa</i> Pall.	Fruits	Sour cherry
<i>Prunus fruticosa</i> Pall.	Fruits	Sweet cherry
<i>Prunus incana</i> (Pall.) Steven	Fruits	Peach
<i>Prunus kotschyi</i> (Spach) Náb.	Nuts	Almond
<i>Prunus lusitanica</i> L.	Fruits	Stonefruits
<i>Prunus lusitanica</i> L. subsp. <i>lusitanica</i>	Fruits	Stonefruits
<i>Prunus lusitanica</i> subsp. <i>azorica</i> (Mouill.) Franco	Fruits	Stonefruits
<i>Prunus lusitanica</i> subsp. <i>hixa</i> (Willd.) Franco	Fruits	Stonefruits
<i>Prunus lycioides</i> (Spach) C. K. Schneid.	Fruits	Peach
<i>Prunus lycioides</i> (Spach) C. K. Schneid.	Nuts	Almond
<i>Prunus mahaleb</i> L.	Fruits	Sour cherry
<i>Prunus mahaleb</i> L.	Fruits	Sweet cherry
<i>Prunus microcarpa</i> C. A. Mey.	Fruits	Japanese plum
<i>Prunus padus</i> L.	Fruits	Sour cherry

Table 5. European priority CWR taxa, showing the main crop use categories and related crops

Crop wild relative	Related crop use category	Related crop common name
<i>Prunus padus</i> L. subsp. <i>padus</i>	Fruits	Sweet cherry
<i>Prunus padus</i> subsp. <i>borealis</i> (A. Blytt) Nyman	Fruits	Sweet cherry
<i>Prunus persica</i> (L.) Batsch	Fruits	Peach
<i>Prunus persica</i> (L.) Batsch	Nuts	Almond
<i>Prunus prostrata</i> Labill.	Fruits	Myrobalan plum
<i>Prunus prostrata</i> Labill.	Fruits	Plum
<i>Prunus ramburii</i> Boiss.	Fruits	Japanese plum
<i>Prunus spinosa</i> L.	Fruits	Apricot
<i>Prunus spinosa</i> L.	Fruits	Japanese plum
<i>Prunus spinosa</i> L.	Fruits	Peach
<i>Prunus spinosa</i> L.	Fruits	Plum
<i>Prunus spinosa</i> L. subsp. <i>spinosa</i>	Fruits	Apricot
<i>Prunus spinosa</i> L. subsp. <i>spinosa</i>	Fruits	Japanese plum
<i>Prunus spinosa</i> L. subsp. <i>spinosa</i>	Fruits	Peach
<i>Prunus spinosa</i> L. subsp. <i>spinosa</i>	Fruits	Plum
<i>Prunus spinosa</i> subsp. <i>dasyphylla</i> (Schur) Domin	Fruits	Apricot
<i>Prunus spinosa</i> subsp. <i>dasyphylla</i> (Schur) Domin	Fruits	Japanese plum
<i>Prunus spinosa</i> subsp. <i>dasyphylla</i> (Schur) Domin	Fruits	Peach
<i>Prunus spinosa</i> subsp. <i>dasyphylla</i> (Schur) Domin	Fruits	Plum
<i>Prunus tomentosa</i> Thunb.	Fruits	Japanese plum
<i>Prunus tomentosa</i> Thunb.	Fruits	Myrobalan plum
<i>Prunus tomentosa</i> Thunb.	Fruits	Peach
<i>Prunus tomentosa</i> Thunb.	Fruits	Sweet cherry
<i>Prunus trichamygdalus</i> Hand.-Mazz.	Nuts	Almond
<i>Prunus webbii</i> (Spach) Vierh.	Fruits	Peach
<i>Prunus webbii</i> (Spach) Vierh.	Nuts	Almond
<i>Pyrus bourgaeana</i> Decne.	Fruits	Pear
<i>Pyrus bourgaeana</i> Decne.	Fruits	Ussurian pear

Table 5. European priority CWR taxa, showing the main crop use categories and related crops

Crop wild relative	Related crop use category	Related crop common name
<i>Pyrus communis</i> L.	Fruits	Pear
<i>Pyrus communis</i> L. subsp. <i>communis</i>	Fruits	Pear
<i>Pyrus communis</i> subsp. <i>caucasica</i> (Fed.) Browicz	Fruits	Pear
<i>Pyrus communis</i> subsp. <i>caucasica</i> (Fed.) Browicz	Fruits	Ussurian pear
<i>Pyrus communis</i> subsp. <i>pyraster</i> (L.) Ehrh.	Fruits	Pear
<i>Pyrus cordata</i> Desv.	Fruits	Pear
<i>Pyrus cordata</i> Desv.	Fruits	Ussurian pear
<i>Pyrus elaeagrifolia</i> Pall.	Fruits	Asian pear/Nashi pear
<i>Pyrus elaeagrifolia</i> Pall.	Fruits	Pear
<i>Pyrus elaeagrifolia</i> Pall.	Fruits	Ussurian pear
<i>Pyrus elaeagrifolia</i> Pall. subsp. <i>elaegrifolia</i>	Fruits	Pear
<i>Pyrus elaeagrifolia</i> subsp. <i>bulgarica</i> (Kuth. & Sachok.) Valev	Fruits	Pear
<i>Pyrus elaeagrifolia</i> subsp. <i>kotschyana</i> (Decne.) Browicz	Fruits	Pear
<i>Pyrus magyarica</i> Terpó	Fruits	Asian pear/Nashi pear
<i>Pyrus magyarica</i> Terpó	Fruits	Pear
<i>Pyrus nivalis</i> Jacq.	Fruits	Pear
<i>Pyrus salicifolia</i> Pall.	Fruits	Pear
<i>Pyrus salicifolia</i> Pall.	Fruits	Ussurian pear
<i>Pyrus spinosa</i> Forssk.	Fruits	Pear
<i>Pyrus spinosa</i> Forssk.	Fruits	Ussurian pear
<i>Pyrus syriaca</i> Boiss.	Fruits	Pear
<i>Pyrus syriaca</i> Boiss.	Fruits	Ussurian pear
<i>Raphanus raphanistrum</i> L.	Oils/fodder	Rape
<i>Raphanus raphanistrum</i> L.	Spices/oils/vegetables (green)	Mustard
<i>Raphanus raphanistrum</i> L.	Vegetables (salad)	Radish
<i>Raphanus raphanistrum</i> L. subsp. <i>raphanistrum</i>	Vegetables (salad)	Radish
<i>Raphanus raphanistrum</i> subsp. <i>landra</i> (Moretti ex DC.) Bonnier & Layens	Vegetables (salad)	Radish
<i>Raphanus raphanistrum</i> subsp. <i>rostratus</i> (DC.) Thell.	Vegetables (salad)	Radish

Table 5. European priority CWR taxa, showing the main crop use categories and related crops

Crop wild relative	Related crop use category	Related crop common name
Raphanus sativus L.	Fodder/forage	Fodder radish
Raphanus sativus L.	Vegetables (salad)	Radish
Ribes aureum Pursh	Fruits	Blackcurrant
Ribes aureum Pursh	Fruits	Gooseberry
Ribes divaricatum Douglas	Fruits	Blackcurrant
Ribes divaricatum Douglas	Fruits	Gooseberry
Ribes multiflorum Roem. & Schult.	Fruits	Blackcurrant
Ribes multiflorum Roem. & Schult.	Fruits	Redcurrant
Ribes multiflorum Roem. & Schult. subsp. multiflorum	Fruits	Redcurrant
Ribes multiflorum subsp. sandalioticum Arrigoni	Fruits	Redcurrant
Ribes nigrum L.	Fruits	Blackcurrant
Ribes nigrum L.	Fruits	Gooseberry
Ribes petraeum Wulfen	Fruits	Blackcurrant
Ribes petraeum Wulfen	Fruits	Redcurrant
Ribes rubrum L.	Fruits	Blackcurrant
Ribes rubrum L.	Fruits	Redcurrant
Ribes sanguineum Pursh	Fruits	Blackcurrant
Ribes spicatum E. Robson	Fruits	Redcurrant
Ribes spicatum E. Robson subsp. spicatum	Fruits	Redcurrant
Ribes spicatum subsp. hispidulum (Jancz.) Hämet-Ahti	Fruits	Redcurrant
Ribes spicatum subsp. lapponicum Hyl.	Fruits	Redcurrant
Ribes uva-crispa L.	Fruits	Blackcurrant
Ribes uva-crispa L.	Fruits	Gooseberry
Rorippa prolifera (Heuff.) Neilr.	Vegetables (salad)	Variableleaf yellowcress
Rorippa valdes-bermejoi (Castrov.) Mart.-Laborde & Castrov.	Vegetables (salad)	Variableleaf yellowcress
Rubus cockburnianus Hemsl.	Fruits	Raspberry
Rubus idaeus L.	Fruits	Raspberry
Rubus idaeus L. subsp. idaeus	Fruits	Raspberry

Table 5. European priority CWR taxa, showing the main crop use categories and related crops

Crop wild relative	Related crop use category	Related crop common name
<i>Rubus idaeus</i> subsp. <i>melanolasius</i> Focke	Fruits	Raspberry
<i>Rubus illecebrosus</i> Focke	Fruits	Raspberry
<i>Rubus occidentalis</i> L.	Fruits	Raspberry
<i>Rubus odoratus</i> L.	Fruits	Raspberry
<i>Rubus phoenicolasius</i> Maxim.	Fruits	Raspberry
<i>Rubus saxatilis</i> L.	Fruits	Raspberry
<i>Rubus spectabilis</i> Pursh	Fruits	Raspberry
<i>Saccharum spontaneum</i> L.	Sugar	Sugarcane
<i>Saccharum spontaneum</i> subsp. <i>aegyptiacum</i> (Willd.) Hack.	Sugar	Sugarcane
<i>Salsola vermiculata</i> L.	Fodder/forage	Mediterranean saltwort
<i>Schedonorus arundinaceus</i> (Schreb.) Dumont subsp. <i>arundinaceus</i>	Fodder/forage	Tall fescue
<i>Schedonorus arundinaceus</i> (Schreb.) Dumort.	Fodder/forage	Tall fescue
<i>Schedonorus arundinaceus</i> subsp. <i>atlantigenus</i> (St.-Yves) H. Scholz	Fodder/forage	Tall fescue
<i>Schedonorus arundinaceus</i> subsp. <i>cirtensis</i> (St.-Yves) H. Scholz & Valdés	Fodder/forage	Tall fescue
<i>Schedonorus arundinaceus</i> subsp. <i>corsicus</i> (Hack.) Foggi & Signorini	Fodder/forage	Tall fescue
<i>Schedonorus arundinaceus</i> subsp. <i>fenas</i> (Lag.) H. Scholz	Fodder/forage	Tall fescue
<i>Schedonorus arundinaceus</i> subsp. <i>mediterraneus</i> (Hack.) H. Scholz & Valdés	Fodder/forage	Tall fescue
<i>Schedonorus arundinaceus</i> subsp. <i>orientalis</i> (Hack.) H. Scholz & Valdés	Fodder/forage	Tall fescue
<i>Schedonorus giganteus</i> (L.) Holub	Fodder/forage	Giant fescue
<i>Schedonorus pratensis</i> (Huds.) P. Beauv.	Fodder/forage	Meadow fescue
<i>Schedonorus pratensis</i> (Huds.) P. Beauv. subsp. <i>pratensis</i>	Fodder/forage	Meadow fescue
<i>Schedonorus pratensis</i> subsp. <i>apenninus</i> (De Not.) H. Scholz & Valdés	Fodder/forage	Meadow fescue
<i>Secale cereale</i> L.	Cereals	Wheat
<i>Secale cereale</i> L. subsp. <i>cereale</i>	Cereals	Rye
<i>Secale cereale</i> subsp. <i>ancestrale</i> Zhuk.	Cereals	Rye
<i>Secale strictum</i> (C. Presl) C. Presl	Cereals	Rye
<i>Secale strictum</i> (C. Presl) C. Presl subsp. <i>strictum</i>	Cereals	Rye
<i>Secale strictum</i> subsp. <i>anatolicum</i> (Boiss.) Hammer	Cereals	Rye

Table 5. European priority CWR taxa, showing the main crop use categories and related crops

Crop wild relative	Related crop use category	Related crop common name
<i>Secale strictum</i> subsp. <i>balcanum</i> (Ganchev) Valdés & H. Scholz	Cereals	Rye
<i>Secale strictum</i> subsp. <i>ciliatoglume</i> (Boiss.) Hammer	Cereals	Rye
<i>Secale sylvestre</i> Host	Cereals	Rye
<i>Secale vavilovii</i> Grossh.	Cereals	Rye
<i>Securigera varia</i> (L.) Lassen	Fodder/forage	Crownvetch
<i>Setaria italica</i> (L.) P. Beauv.	Cereals	Foxtail millet
<i>Setaria italica</i> (L.) P. Beauv. subsp. <i>italica</i>	Cereals	Foxtail millet
<i>Setaria italica</i> subsp. <i>moharia</i> (Alef.) R. A. W. Herrm.	Cereals	Foxtail millet
<i>Setaria italica</i> subsp. <i>pycnocoma</i> (Steud.) De Wet	Cereals	Foxtail millet
<i>Sinapidendron angustifolium</i> (DC.) Lowe	Vegetables (green)	Brassicas
<i>Sinapidendron frutescens</i> (Sol.) Lowe var. <i>frutescens</i>	Vegetables (green)	Brassicas
<i>Sinapidendron frutescens</i> Lowe	Vegetables (green)	Brassicas
<i>Sinapidendron frutescens</i> subsp. <i>succulentum</i> (Lowe) Rustan	Vegetables (green)	Brassicas
<i>Sinapidendron gymnocalyx</i> (Lowe) Rustan	Vegetables (green)	Brassicas
<i>Sinapidendron rupestre</i> Lowe	Vegetables (green)	Brassicas
<i>Sinapidendron sempervivifolium</i> Menezes	Vegetables (green)	Brassicas
<i>Sinapis alba</i> L.	Oils/fodder	Rape
<i>Sinapis alba</i> L.	Spices	Black mustard
<i>Sinapis alba</i> L.	Spices/oils/vegetables (green)	Mustard
<i>Sinapis alba</i> L.	Vegetables (green)	Ethiopian cabbage
<i>Sinapis alba</i> L.	Vegetables (green)	Kale
<i>Sinapis alba</i> L.	Vegetables (root)/fodder	Turnip
<i>Sinapis alba</i> L.	Vegetables (salad)	Radish
<i>Sinapis alba</i> L. subsp. <i>alba</i>	Oils/fodder	Rape
<i>Sinapis alba</i> L. subsp. <i>alba</i>	Spices	Black mustard
<i>Sinapis alba</i> L. subsp. <i>alba</i>	Spices	White mustard
<i>Sinapis alba</i> L. subsp. <i>alba</i>	Spices/oils/vegetables (green)	Mustard
<i>Sinapis alba</i> L. subsp. <i>alba</i>	Vegetables (green)	Ethiopian cabbage

Table 5. European priority CWR taxa, showing the main crop use categories and related crops

Crop wild relative	Related crop use category	Related crop common name
<i>Sinapis alba</i> L. subsp. <i>alba</i>	Vegetables (green)	Kale
<i>Sinapis alba</i> L. subsp. <i>alba</i>	Vegetables (root)/fodder	Turnip
<i>Sinapis alba</i> L. subsp. <i>alba</i>	Vegetables (salad)	Radish
<i>Sinapis alba</i> subsp. <i>dissecta</i> (Lag.) Simonk.	Oils/fodder	Rape
<i>Sinapis alba</i> subsp. <i>dissecta</i> (Lag.) Simonk.	Spices	Black mustard
<i>Sinapis alba</i> subsp. <i>dissecta</i> (Lag.) Simonk.	Spices	White mustard
<i>Sinapis alba</i> subsp. <i>dissecta</i> (Lag.) Simonk.	Spices/oils/vegetables (green)	Mustard
<i>Sinapis alba</i> subsp. <i>dissecta</i> (Lag.) Simonk.	Vegetables (green)	Ethiopian cabbage
<i>Sinapis alba</i> subsp. <i>dissecta</i> (Lag.) Simonk.	Vegetables (green)	Kale
<i>Sinapis alba</i> subsp. <i>dissecta</i> (Lag.) Simonk.	Vegetables (root)/fodder	Turnip
<i>Sinapis alba</i> subsp. <i>dissecta</i> (Lag.) Simonk.	Vegetables (salad)	Radish
<i>Sinapis alba</i> subsp. <i>mairei</i> (H. Lindb.) Maire	Oils/fodder	Rape
<i>Sinapis alba</i> subsp. <i>mairei</i> (H. Lindb.) Maire	Spices	Black mustard
<i>Sinapis alba</i> subsp. <i>mairei</i> (H. Lindb.) Maire	Spices	White mustard
<i>Sinapis alba</i> subsp. <i>mairei</i> (H. Lindb.) Maire	Spices/oils/vegetables (green)	Mustard
<i>Sinapis alba</i> subsp. <i>mairei</i> (H. Lindb.) Maire	Vegetables (green)	Ethiopian cabbage
<i>Sinapis alba</i> subsp. <i>mairei</i> (H. Lindb.) Maire	Vegetables (green)	Kale
<i>Sinapis alba</i> subsp. <i>mairei</i> (H. Lindb.) Maire	Vegetables (root)/fodder	Turnip
<i>Sinapis alba</i> subsp. <i>mairei</i> (H. Lindb.) Maire	Vegetables (salad)	Radish
<i>Sinapis arvensis</i> L.	Oils/fodder	Rape
<i>Sinapis arvensis</i> L.	Spices	Black mustard
<i>Sinapis arvensis</i> L.	Spices/oils/vegetables (green)	Mustard
<i>Sinapis arvensis</i> L.	Vegetables (green)	Ethiopian cabbage
<i>Sinapis arvensis</i> L.	Vegetables (green)	Kale
<i>Sinapis arvensis</i> L.	Vegetables (root)/fodder	Turnip
<i>Sinapis arvensis</i> L.	Vegetables (salad)	Radish
<i>Sinapis arvensis</i> L. subsp. <i>arvensis</i>	Oils/fodder	Rape
<i>Sinapis arvensis</i> L. subsp. <i>arvensis</i>	Spices	Black mustard

Table 5. European priority CWR taxa, showing the main crop use categories and related crops

Crop wild relative	Related crop use category	Related crop common name
<i>Sinapis arvensis</i> L. subsp. <i>arvensis</i>	Spices/oils/vegetables (green)	Mustard
<i>Sinapis arvensis</i> L. subsp. <i>arvensis</i>	Vegetables (green)	Ethiopian cabbage
<i>Sinapis arvensis</i> L. subsp. <i>arvensis</i>	Vegetables (green)	Kale
<i>Sinapis arvensis</i> L. subsp. <i>arvensis</i>	Vegetables (root)/fodder	Turnip
<i>Sinapis arvensis</i> L. subsp. <i>arvensis</i>	Vegetables (salad)	Radish
<i>Sinapis arvensis</i> var. <i>orientalis</i> (L.) W. D. J. Koch & Ziz	Oils/fodder	Rape
<i>Sinapis arvensis</i> var. <i>orientalis</i> (L.) W. D. J. Koch & Ziz	Spices	Black mustard
<i>Sinapis arvensis</i> var. <i>orientalis</i> (L.) W. D. J. Koch & Ziz	Spices/oils/vegetables (green)	Mustard
<i>Sinapis arvensis</i> var. <i>orientalis</i> (L.) W. D. J. Koch & Ziz	Vegetables (green)	Ethiopian cabbage
<i>Sinapis arvensis</i> var. <i>orientalis</i> (L.) W. D. J. Koch & Ziz	Vegetables (green)	Kale
<i>Sinapis arvensis</i> var. <i>orientalis</i> (L.) W. D. J. Koch & Ziz	Vegetables (root)/fodder	Turnip
<i>Sinapis arvensis</i> var. <i>orientalis</i> (L.) W. D. J. Koch & Ziz	Vegetables (salad)	Radish
<i>Sinapis flexuosa</i> Poir.	Spices	White mustard
<i>Solanum lidii</i> Sunding	Fruits (savoury)	Eggplant
<i>Solanum linnaeanum</i> Hepper & P.-M. L. Jaeger	Fruits (savoury)	Eggplant
<i>Solanum marginatum</i> L. f.	Fruits (savoury)	Eggplant
<i>Solanum sisymbriifolium</i> Lam.	Fruits (savoury)	Eggplant
<i>Solanum torvum</i> Sw.	Fruits (savoury)	Eggplant
<i>Sorghum bicolor</i> (L.) Moench	Cereals	Sorghum
<i>Sorghum halepense</i> (L.) Pers.	Cereals	Sorghum
<i>Trifolium alexandrinum</i> L.	Fodder/forage	Berseem/Egyptian clover
<i>Trifolium alpestre</i> L.	Fodder/forage	Owlhead clover
<i>Trifolium alpestre</i> L. var. <i>alpestre</i>	Fodder/forage	Owlhead clover
<i>Trifolium alpestre</i> var. <i>durmitoreum</i> Rohlena	Fodder/forage	Owlhead clover
<i>Trifolium ambiguum</i> M. Bieb.	Fodder/forage	Caucasian clover
<i>Trifolium angustifolium</i> L.	Fodder/forage	Narrow clover
<i>Trifolium argutum</i> Banks & Sol.	Fodder/forage	Clover (berseem, red, subterranean, white)

Table 5. European priority CWR taxa, showing the main crop use categories and related crops

Crop wild relative	Related crop use category	Related crop common name
<i>Trifolium arvense</i> L.	Fodder/forage	Harefoot clover
<i>Trifolium fragiferum</i> L.	Fodder/forage	Strawberry clover
<i>Trifolium fragiferum</i> L. subsp. <i>fragiferum</i>	Fodder/forage	Strawberry clover
<i>Trifolium fragiferum</i> subsp. <i>bonannii</i> (C. Presl) Soják	Fodder/forage	Strawberry clover
<i>Trifolium hirtum</i> All.	Fodder/forage	Rose clover
<i>Trifolium hybridum</i> L.	Fodder/forage	Alsike clover
<i>Trifolium hybridum</i> L. subsp. <i>hybridum</i>	Fodder/forage	Alsike clover
<i>Trifolium hybridum</i> subsp. <i>anatolicum</i> (Boiss.) M. Hossain	Fodder/forage	Alsike clover
<i>Trifolium hybridum</i> subsp. <i>elegans</i> (Savi) Asch. & Graebn.	Fodder/forage	Alsike clover
<i>Trifolium incarnatum</i> L.	Fodder/forage	Crimson clover
<i>Trifolium incarnatum</i> L. subsp. <i>incarnatum</i>	Fodder/forage	Crimson clover
<i>Trifolium incarnatum</i> subsp. <i>molinerii</i> (Hornem.) Syme	Fodder/forage	Crimson clover
<i>Trifolium isthmocarpum</i> Brot.	Fodder/forage	Moroccan clover
<i>Trifolium isthmocarpum</i> Brot. subsp. <i>isthmocarpum</i>	Fodder/forage	Moroccan clover
<i>Trifolium isthmocarpum</i> subsp. <i>jaminianum</i> (Boiss.) Murb.	Fodder/forage	Moroccan clover
<i>Trifolium michelianum</i> Savi	Fodder/forage	Balansa clover
<i>Trifolium michelianum</i> Savi var. <i>michelianum</i>	Fodder/forage	Balansa clover
<i>Trifolium michelianum</i> var. <i>balansae</i> (Boiss.) Azn.	Fodder/forage	Balansa clover
<i>Trifolium pratense</i> L.	Fodder/forage	Red clover
<i>Trifolium pratense</i> L. var. <i>pratense</i>	Fodder/forage	Red clover
<i>Trifolium pratense</i> var. <i>americanum</i> Harz	Fodder/forage	Red clover
<i>Trifolium pratense</i> var. <i>frigidum</i> Gaudin	Fodder/forage	Red clover
<i>Trifolium pratense</i> var. <i>maritimum</i> Zabel	Fodder/forage	Red clover
<i>Trifolium pratense</i> var. <i>sativum</i> Schreb.	Fodder/forage	Red clover
<i>Trifolium repens</i> L.	Fodder/forage	White clover
<i>Trifolium repens</i> L. var. <i>repens</i>	Fodder/forage	White clover
<i>Trifolium repens</i> subsp. <i>prostratum</i> Nyman	Fodder/forage	White clover
<i>Trifolium repens</i> var. <i>biasolettii</i> (Steud. & Hochst.) Asch. & Graebn.	Fodder/forage	White clover

Table 5. European priority CWR taxa, showing the main crop use categories and related crops

Crop wild relative	Related crop use category	Related crop common name
<i>Trifolium repens</i> var. <i>macrorrhizum</i> Boiss.	Fodder/forage	White clover
<i>Trifolium repens</i> var. <i>nevadense</i> (Boiss.) C. Vicioso	Fodder/forage	White clover
<i>Trifolium repens</i> var. <i>ochranthum</i> K. Malý	Fodder/forage	White clover
<i>Trifolium repens</i> var. <i>orbelicum</i> (Velen.) R. M. Fritsch	Fodder/forage	White clover
<i>Trifolium repens</i> var. <i>orphanideum</i> (Boiss.) Boiss.	Fodder/forage	White clover
<i>Trifolium resupinatum</i> L.	Fodder/forage	Persian clover
<i>Trifolium resupinatum</i> L. var. <i>resupinatum</i>	Fodder/forage	Persian clover
<i>Trifolium resupinatum</i> var. <i>majus</i> Boiss.	Fodder/forage	Persian clover
<i>Trifolium squarrosum</i> L.	Fodder/forage	Squarrose clover
<i>Trifolium subterraneum</i> L.	Fodder/forage	Subterranean clover
<i>Trifolium subterraneum</i> subsp. <i>oxaloides</i> Nyman	Fodder/forage	Subterranean clover
<i>Trifolium subterraneum</i> subsp. <i>yanninicum</i> Katzn. & F. H. W. Morley	Fodder/forage	Subterranean clover
<i>Trifolium vesiculosum</i> Savi	Fodder/forage	Arrowleaf clover
<i>Trigonella foenum-graecum</i> L.	Fodder/forage	Fenugreek
<i>Trisetum flavescens</i> (L.) P. Beauv.	Fodder/forage	Golden oatgrass
<i>Trisetum flavescens</i> (L.) P. Beauv. subsp. <i>flavescens</i>	Fodder/forage	Golden oatgrass
<i>Trisetum flavescens</i> subsp. <i>baregense</i> (Laffitte & Miégev.) O. Bolòs & al.	Fodder/forage	Golden oatgrass
<i>Trisetum flavescens</i> subsp. <i>corsicum</i> (Rouy) Cif. & Giacom.	Fodder/forage	Golden oatgrass
<i>Trisetum flavescens</i> subsp. <i>purpurascens</i> (DC.) Arcang.	Fodder/forage	Golden oatgrass
<i>Trisetum flavescens</i> subsp. <i>serbicum</i> (Velen.) Hayek	Fodder/forage	Golden oatgrass
<i>Trisetum flavescens</i> subsp. <i>splendens</i> (C. Presl) Arcang.	Fodder/forage	Golden oatgrass
<i>Trisetum flavescens</i> subsp. <i>tenue</i> (Formánek) Strid	Fodder/forage	Golden oatgrass
<i>Triticum monococcum</i> L.	Cereals	Wheat
<i>Triticum monococcum</i> L. subsp. <i>monococcum</i>	Cereals	Einkorn wheat
<i>Triticum monococcum</i> subsp. <i>aegilopoides</i> (Link) Thell.	Cereals	Wheat
<i>Triticum monococcum</i> subsp. <i>sinskajae</i> (A. A. Filatenko & U. K. Kurkiev) Valdés & H. Scholz	Cereals	Wheat
<i>Triticum timopheevii</i> (Zhuk.) Zhuk.	Cereals	Wheat

Table 5. European priority CWR taxa, showing the main crop use categories and related crops

Crop wild relative	Related crop use category	Related crop common name
<i>Triticum timopheevii</i> (Zhuk.) Zhuk. subsp. <i>timopheevii</i>	Cereals	Timopheev's wheat
<i>Triticum timopheevii</i> subsp. <i>armeniicum</i> (Jakubz.) Mackey	Cereals	Wheat
<i>Triticum turgidum</i> L.	Cereals	Wheat
<i>Triticum turgidum</i> L. subsp. <i>turgidum</i>	Cereals	Poulard wheat
<i>Triticum turgidum</i> subsp. <i>asiaticum</i> (Vavilov) H. Scholz	Cereals	Wheat
<i>Triticum turgidum</i> subsp. <i>carthlicum</i> (Nevski) Á. Löve & D. Löve	Cereals	Persian wheat
<i>Triticum turgidum</i> subsp. <i>dicoccoides</i> (Asch. & Graebn.) Thell.	Cereals	Wheat
<i>Triticum turgidum</i> subsp. <i>dicoccon</i> (Schrank) Thell.	Cereals	Emmer wheat
<i>Triticum turgidum</i> subsp. <i>durum</i> (Desf.) Husn.	Cereals	Durum wheat
<i>Triticum turgidum</i> subsp. <i>polonicum</i> (L.) Thell.	Cereals	Polish wheat
<i>Triticum turgidum</i> subsp. <i>subspontaneum</i> (Tzvelev) Valdés & H. Scholz	Cereals	Wheat
<i>Triticum turgidum</i> subsp. <i>volgense</i> (Flaksb.) Á Löve & D. Löve	Cereals	Wheat
<i>Vaccinium corymbosum</i> L.	Fruits	Blueberry, highbush
<i>Vaccinium corymbosum</i> L.	Fruits	Blueberry, lowbush
<i>Vaccinium corymbosum</i> L.	Fruits	Blueberry, rabbiteye
<i>Vaccinium macrocarpon</i> Aiton	Fruits	Cranberry
<i>Vaccinium oxycoccos</i> L.	Fruits	Cranberry
<i>Vicia anatolica</i> Turrill	Fodder/forage	Hungarian vetch
<i>Vicia articulata</i> Hornem.	Fodder/forage	Bitter vetch
<i>Vicia articulata</i> Hornem.	Fodder/forage	One-flowered vetch
<i>Vicia barbazitae</i> Ten. & Guss.	Fodder/forage	Common vetch
<i>Vicia benghalensis</i> L.	Fodder/forage	Purple vetch
<i>Vicia bithynica</i> (L.) L.	Pulses	Faba bean
<i>Vicia capreolata</i> Lowe	Fodder/forage	Bitter vetch
<i>Vicia capreolata</i> Lowe	Fodder/forage	Common vetch
<i>Vicia capreolata</i> Lowe	Fodder/forage	Hungarian vetch
<i>Vicia capreolata</i> Lowe	Fodder/forage	One-flowered vetch
<i>Vicia capreolata</i> Lowe	Pulses	Faba bean

Table 5. European priority CWR taxa, showing the main crop use categories and related crops

Crop wild relative	Related crop use category	Related crop common name
<i>Vicia capreolata</i> Lowe	Pulses	Narbon bean
<i>Vicia ciliatula</i> Lipsky	Fodder/forage	Hungarian vetch
<i>Vicia costae</i> A. Hansen	Fodder/forage	Bitter vetch
<i>Vicia costae</i> A. Hansen	Fodder/forage	Common vetch
<i>Vicia costae</i> A. Hansen	Fodder/forage	Hungarian vetch
<i>Vicia costae</i> A. Hansen	Fodder/forage	One-flowered vetch
<i>Vicia costae</i> A. Hansen	Pulses	Faba bean
<i>Vicia costae</i> A. Hansen	Pulses	Narbon bean
<i>Vicia cuspidata</i> Boiss.	Pulses	Faba bean
<i>Vicia eristalioides</i> Maxted	Pulses	Narbon bean
<i>Vicia ervilia</i> (L.) Willd.	Fodder/forage	Bitter vetch
<i>Vicia ervilia</i> (L.) Willd.	Fodder/forage	One-flowered vetch
<i>Vicia ferreirensis</i> Goyder	Fodder/forage	Bitter vetch
<i>Vicia ferreirensis</i> Goyder	Fodder/forage	Common vetch
<i>Vicia ferreirensis</i> Goyder	Fodder/forage	Hungarian vetch
<i>Vicia ferreirensis</i> Goyder	Fodder/forage	One-flowered vetch
<i>Vicia ferreirensis</i> Goyder	Pulses	Faba bean
<i>Vicia ferreirensis</i> Goyder	Pulses	Narbon bean
<i>Vicia grandiflora</i> Scop.	Fodder/forage	Common vetch
<i>Vicia grandiflora</i> Scop. var. <i>grandiflora</i>	Fodder/forage	Common vetch
<i>Vicia hirsuta</i> (L.) Gray	Fodder/forage	One-flowered vetch
<i>Vicia hybrida</i> L.	Fodder/forage	Hungarian vetch
<i>Vicia hyrcanica</i> Fisch. & C. A. Mey.	Fodder/forage	Hungarian vetch
<i>Vicia johannis</i> Tamamsch.	Pulses	Faba bean
<i>Vicia johannis</i> Tamamsch.	Pulses	Narbon bean
<i>Vicia johannis</i> Tamamsch. var. <i>johannis</i>	Pulses	Faba bean
<i>Vicia johannis</i> Tamamsch. var. <i>johannis</i>	Pulses	Narbon bean
<i>Vicia johannis</i> var. <i>procumbens</i> H. I. Schafer	Pulses	Faba bean

Table 5. European priority CWR taxa, showing the main crop use categories and related crops

Crop wild relative	Related crop use category	Related crop common name
<i>Vicia johannis</i> var. <i>procumbens</i> H. I. Schafer	Pulses	Narbon bean
<i>Vicia lathyroides</i> L.	Pulses	Faba bean
<i>Vicia lutea</i> L.	Fodder/forage	Hungarian vetch
<i>Vicia lutea</i> L. subsp. <i>lutea</i>	Fodder/forage	Hungarian vetch
<i>Vicia lutea</i> subsp. <i>vestita</i> (Boiss.) Rouy	Fodder/forage	Hungarian vetch
<i>Vicia melanops</i> Sibth. & Sm.	Fodder/forage	Hungarian vetch
<i>Vicia melanops</i> Sibth. & Sm. var. <i>melanops</i>	Fodder/forage	Hungarian vetch
<i>Vicia mollis</i> Boiss. & Hausskn.	Fodder/forage	Hungarian vetch
<i>Vicia narbonensis</i> L.	Pulses	Faba bean
<i>Vicia narbonensis</i> L.	Pulses	Narbon bean
<i>Vicia narbonensis</i> L. var. <i>narbonensis</i>	Pulses	Narbon bean
<i>Vicia narbonensis</i> var. <i>affinis</i> Asch. & Schweinf.	Pulses	Narbon bean
<i>Vicia narbonensis</i> var. <i>salmonea</i> (Mouterde) H. I. Schafer	Pulses	Narbon bean
<i>Vicia pannonica</i> Crantz	Fodder/forage	Hungarian vetch
<i>Vicia pannonica</i> Crantz subsp. <i>pannonica</i>	Fodder/forage	Hungarian vetch
<i>Vicia pannonica</i> subsp. <i>striata</i> (M. Bieb.) Nyman	Fodder/forage	Hungarian vetch
<i>Vicia pectinata</i> Lowe	Fodder/forage	Common vetch
<i>Vicia pyrenaica</i> Pourr.	Fodder/forage	Common vetch
<i>Vicia sativa</i> L.	Fodder/forage	Common vetch
<i>Vicia sativa</i> L. subsp. <i>sativa</i>	Fodder/forage	Common vetch
<i>Vicia sativa</i> subsp. <i>amphicarpa</i> (Dorthes) Asch.	Fodder/forage	Common vetch
<i>Vicia sativa</i> subsp. <i>cordata</i> (Hoppe) Batt.	Fodder/forage	Common vetch
<i>Vicia sativa</i> subsp. <i>devia</i> J. G. Costa	Fodder/forage	Common vetch
<i>Vicia sativa</i> subsp. <i>incisa</i> (M. Bieb.) Arcang.	Fodder/forage	Common vetch
<i>Vicia sativa</i> subsp. <i>macrocarpa</i> (Moris) Arcang.	Fodder/forage	Common vetch
<i>Vicia sativa</i> subsp. <i>nigra</i> (L.) Ehrh.	Fodder/forage	Common vetch
<i>Vicia sativa</i> var. <i>platysperma</i> Barulina	Fodder/forage	Common vetch
<i>Vicia serratifolia</i> Jacq.	Pulses	Faba bean

Table 5. European priority CWR taxa, showing the main crop use categories and related crops

Crop wild relative	Related crop use category	Related crop common name
<i>Vicia serratifolia</i> Jacq.	Pulses	Narbon bean
<i>Vicia villosa</i> Roth	Fodder/forage	Hairy vetch
<i>Vicia villosa</i> Roth subsp. <i>villosa</i>	Fodder/forage	Hairy vetch
<i>Vicia villosa</i> subsp. <i>ambigua</i> (Guss.) Kerguélen	Fodder/forage	Hairy vetch
<i>Vicia villosa</i> subsp. <i>eriocarpa</i> (Hauskn.) P. W. Ball	Fodder/forage	Hairy vetch
<i>Vicia villosa</i> subsp. <i>microphylla</i> (d'Urv.) P. W. Ball	Fodder/forage	Hairy vetch
<i>Vicia villosa</i> subsp. <i>varia</i> (Host) Corb.	Fodder/forage	Hairy vetch
<i>Vitis acerifolia</i> Raf.	Beverages	Wine grape
<i>Vitis amurensis</i> Rupr.	Beverages	Amur grape
<i>Vitis amurensis</i> Rupr.	Beverages	Wine grape
<i>Vitis labrusca</i> L.	Beverages	Wine grape
<i>Vitis riparia</i> Michx.	Beverages	Wine grape
<i>Vitis rupestris</i> Scheele	Beverages	Wine grape
<i>Vitis vinifera</i> L.	Beverages	Muscadine grape
<i>Vitis vinifera</i> L.	Beverages	Wine grape
<i>Vitis vulpina</i> L.	Beverages	Wine grape