

**SCREENING REPORT FOR AN ENVIRONMENTAL AUTHORIZATION AS
REQUIRED BY THE 2014 EIA REGULATIONS – PROPOSED SITE
ENVIRONMENTAL SENSITIVITY**

EIA Reference number: 16/3/3/6/7/1/B4/45/1420/19

Project name: Lanquedoc

Project title: Bridge

Date screening report generated: 07/06/2022 14:39:27

Applicant: Stellenbosch Municipality

Compiler: MS-EC

Compiler signature:
.....

Application Category: Infrastructure | Transport Services | Roads | Public

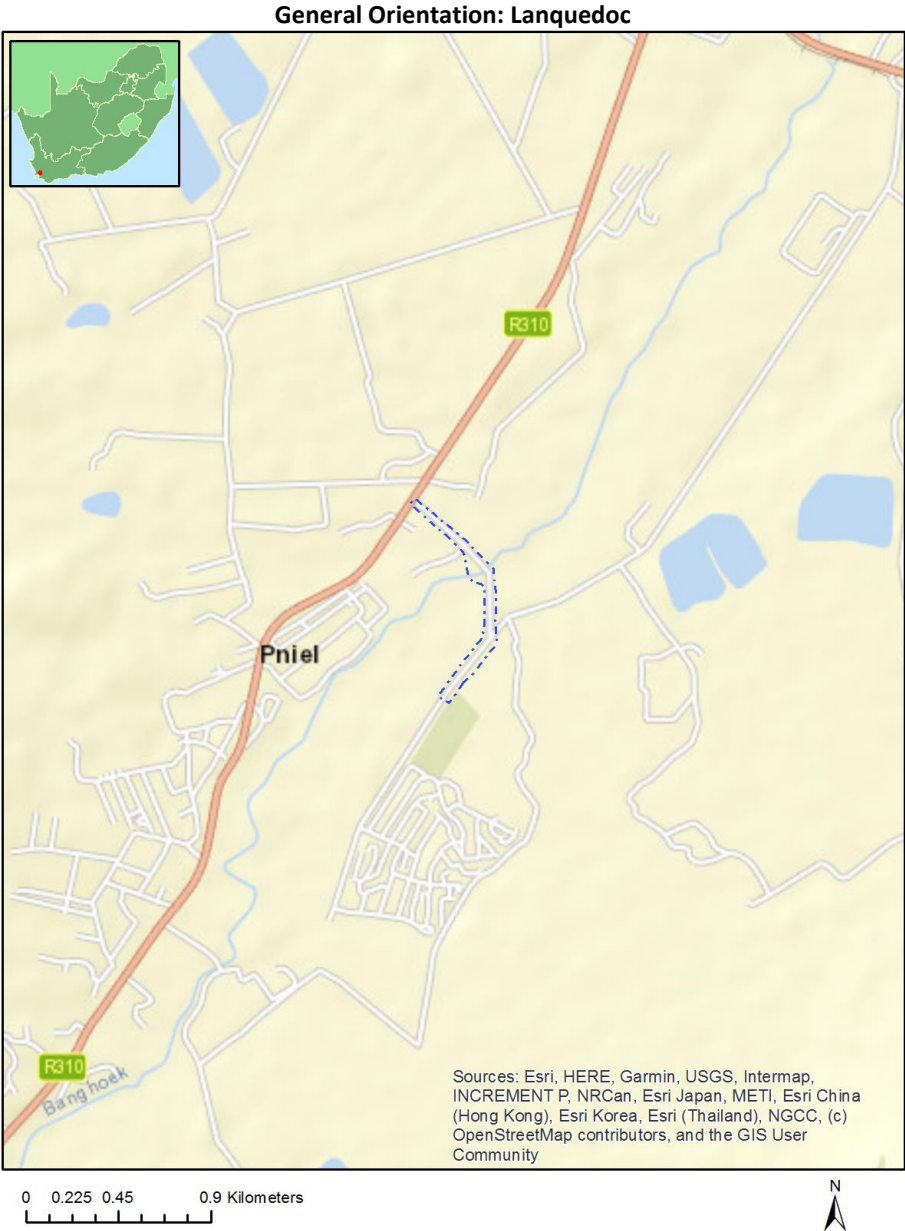


Table of Contents

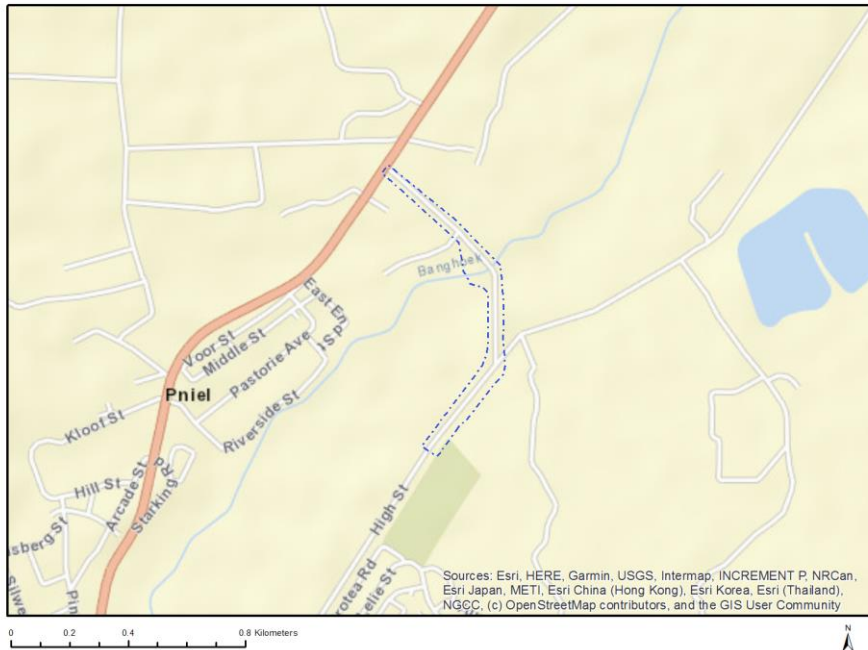
Proposed Project Location	3
Orientation map 1: General location	3
Map of proposed site and relevant area(s)	4
Cadastral details of the proposed site	4
Wind and Solar developments with an approved Environmental Authorisation or applications under consideration within 30 km of the proposed area	5
Environmental Management Frameworks relevant to the application	5
Environmental screening results and assessment outcomes	5
Relevant development incentives, restrictions, exclusions or prohibitions	5
Map indicating proposed development footprint within applicable development incentive, restriction, exclusion or prohibition zones	6
Proposed Development Area Environmental Sensitivity	6
Specialist assessments identified	7
Results of the environmental sensitivity of the proposed area	9
MAP OF RELATIVE AGRICULTURE THEME SENSITIVITY	9
MAP OF RELATIVE ANIMAL SPECIES THEME SENSITIVITY	10
MAP OF RELATIVE AQUATIC BIODIVERSITY THEME SENSITIVITY	11
MAP OF RELATIVE ARCHAEOLOGICAL AND CULTURAL HERITAGE THEME SENSITIVITY	12
MAP OF RELATIVE CIVIL AVIATION THEME SENSITIVITY	13
MAP OF RELATIVE DEFENCE THEME SENSITIVITY	14
MAP OF RELATIVE PALEONTOLOGY THEME SENSITIVITY	15
MAP OF RELATIVE PLANT SPECIES THEME SENSITIVITY	16
MAP OF RELATIVE TERRESTRIAL BIODIVERSITY THEME SENSITIVITY	19

Proposed Project Location

Orientation map 1: General location



Map of proposed site and relevant area(s)



Cadastral details of the proposed site

Property details:

No	Farm Name	Farm/ Erf No	Portion	Latitude	Longitude	Property Type
1	LANQUEDOC (PAARL)	1	0	33°53'51.5S	18°57'59.22E	Erven
2	LANQUEDOC (PAARL)	11	0	33°53'36.84S	18°58'0.83E	Erven
3	LANQUEDOC (PAARL)	10	0	33°53'43.31S	18°58'9.24E	Erven
4	LANQUEDOC (PAARL)	47	0	33°53'36.65S	18°58'3.19E	Erven
5	LANQUEDOC (PAARL)	1	0	33°53'31.48S	18°58'10.07E	Erven
6		1730	0	33°53'22.39S	18°58'38.89E	Farm
7		1647	0	33°53'40.48S	18°57'48.28E	Farm
8		1730	0	33°53'22.39S	18°58'38.89E	Farm Portion
9		1647	2	33°53'42.85S	18°57'47.78E	Farm Portion
10		1173	8	33°53'46.66S	18°58'0.56E	Farm Portion
11		1176	2	33°53'27.97S	18°58'10.21E	Farm Portion

Development footprint¹ vertices:
No development footprint(s) specified.

¹ "development footprint", means the area within the site on which the development will take place and includes all ancillary developments for example roads, power lines, boundary walls, paving etc. which require vegetation clearance or which will be disturbed and for which the application has been submitted.

Wind and Solar developments with an approved Environmental Authorisation or applications under consideration within 30 km of the proposed area

No nearby wind or solar developments found.

Environmental Management Frameworks relevant to the application

No intersections with EMF areas found.

Environmental screening results and assessment outcomes

The following sections contain a summary of any development incentives, restrictions, exclusions or prohibitions that apply to the proposed development site as well as the most environmental sensitive features on the site based on the site sensitivity screening results for the application classification that was selected. The application classification selected for this report is:

Infrastructure | Transport Services | Roads | Public.

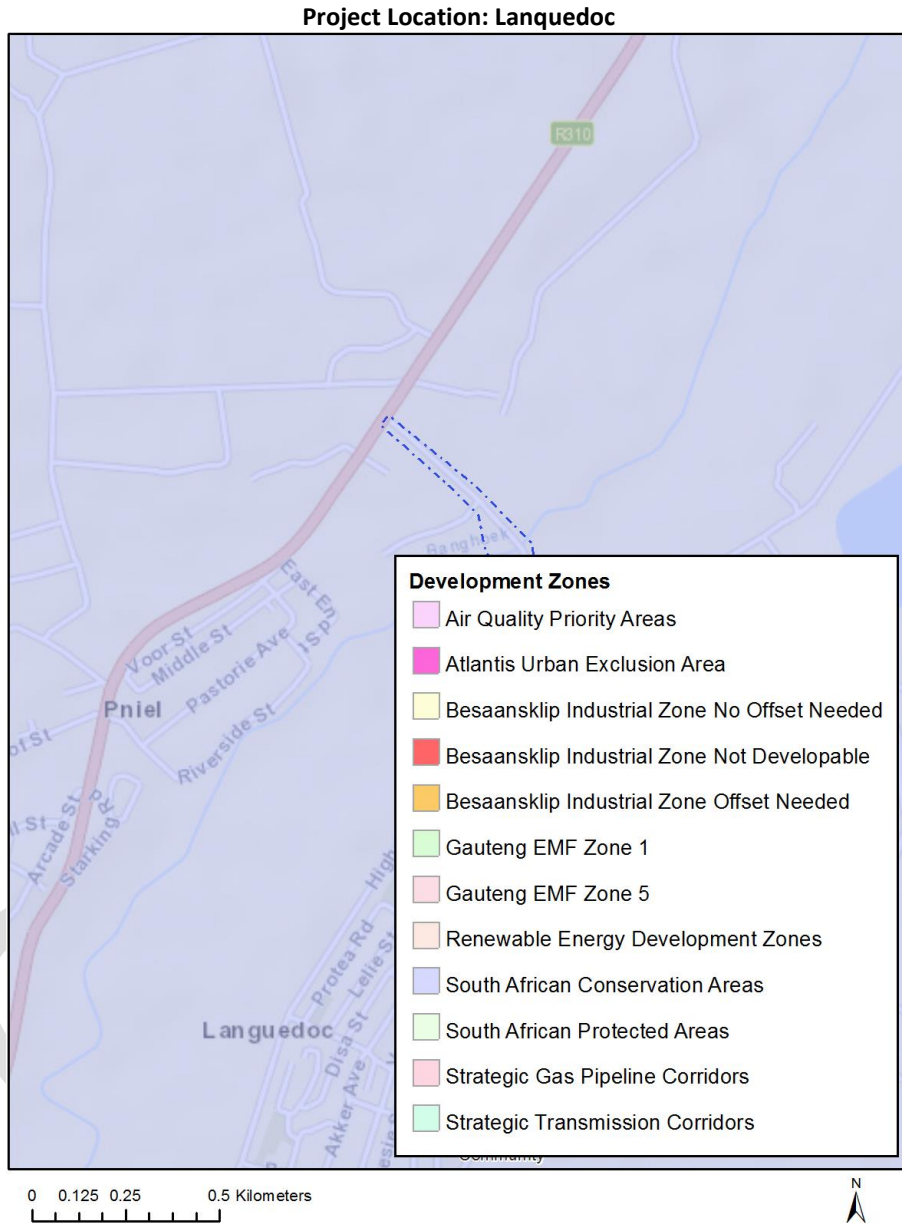
Relevant development incentives, restrictions, exclusions or prohibitions

The following development incentives, restrictions, exclusions or prohibitions and their implications that apply to this site are indicated below.

Incentive, restriction or prohibition	Implication
Strategic Transmission Corridor-Central corridor	https://screening.environment.gov.za/ScreeningDownloads/DevelopmentZones/Combined_EGI.pdf
Strategic Gas Pipeline Corridors -Phase 1a & 1b: Saldanha to Ankerlig and Saldanha to Mossel Bay	https://screening.environment.gov.za/ScreeningDownloads/DevelopmentZones/Combined_GAS.pdf
South African Conservation	https://screening.environment.gov.za/ScreeningDownloads/DevelopmentZones/SACAD_OR_2021_Q4_Metadata.pdf

tion Areas	
---------------	--

Map indicating proposed development footprint within applicable development incentive, restriction, exclusion or prohibition zones



Proposed Development Area Environmental Sensitivity

The following summary of the development site environmental sensitivities is identified. Only the highest environmental sensitivity is indicated. The footprint environmental sensitivities for the proposed development footprint as identified, are indicative only and must be verified on site by a suitably qualified person before the specialist assessments identified below can be confirmed.

Theme	Very High	High	Medium	Low
-------	-----------	------	--------	-----

	sensitivity	sensitivity	sensitivity	sensitivity
Agriculture Theme	X			
Animal Species Theme			X	
Aquatic Biodiversity Theme	X			
Archaeological and Cultural Heritage Theme	X			
Civil Aviation Theme			X	
Defence Theme				X
Paleontology Theme			X	
Plant Species Theme			X	
Terrestrial Biodiversity Theme	X			

Specialist assessments identified

Based on the selected classification, and the environmental sensitivities of the proposed development footprint, the following list of specialist assessments have been identified for inclusion in the assessment report. It is the responsibility of the EAP to confirm this list and to motivate in the assessment report, the reason for not including any of the identified specialist study including the provision of photographic evidence of the site situation.

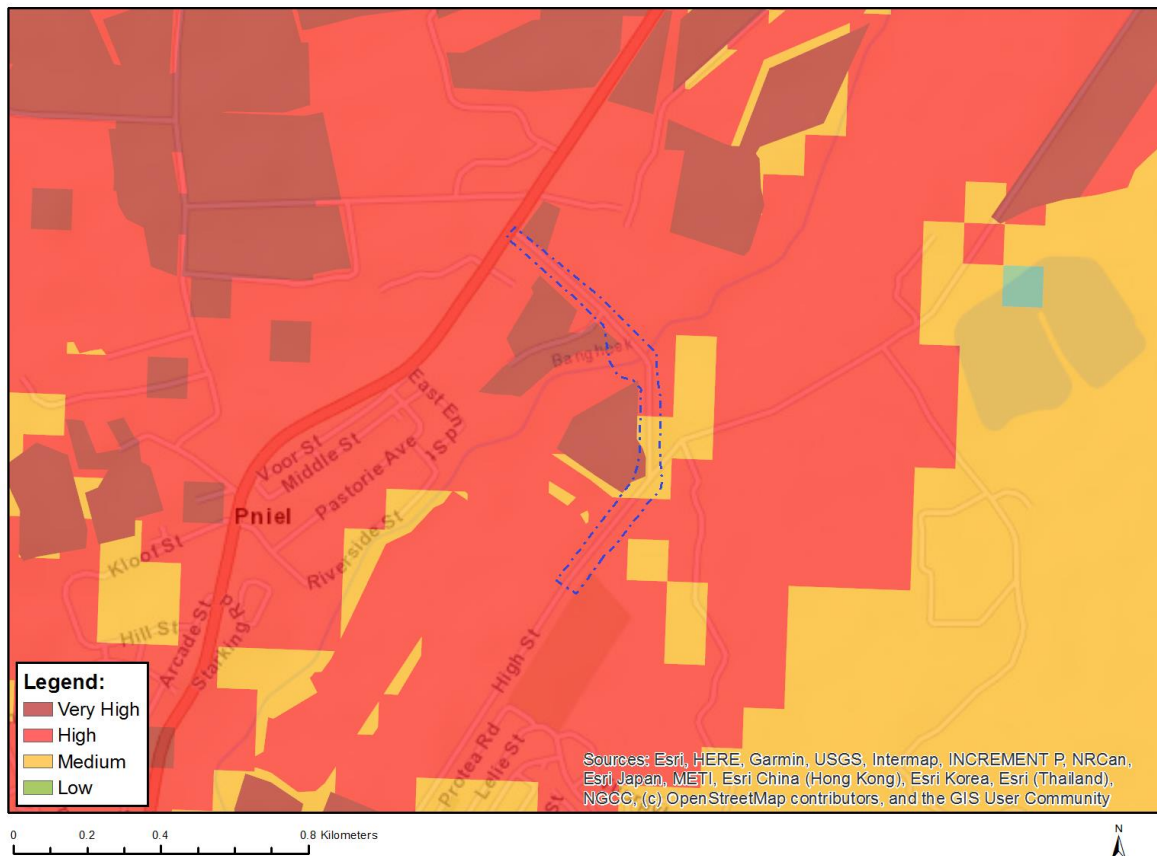
N	Specialist assessment	Assessment Protocol
1	Agricultural Impact Assessment	https://screening.environment.gov.za/ScreeningDownloads/AssessmentProtocols/Gazetted_General_Agriculture_Assessment_Protocols.pdf
2	Landscape/Visual Impact Assessment	https://screening.environment.gov.za/ScreeningDownloads/AssessmentProtocols/Gazetted_General_Requirement_Assessment_Protocols.pdf
3	Archaeological and Cultural Heritage Impact Assessment	https://screening.environment.gov.za/ScreeningDownloads/AssessmentProtocols/Gazetted_General_Requirement_Assessment_Protocols.pdf
4	Palaeontology Impact Assessment	https://screening.environment.gov.za/ScreeningDownloads/AssessmentProtocols/Gazetted_General_Requirement_Assessment_Protocols.pdf
5	Terrestrial Biodiversity Impact Assessment	https://screening.environment.gov.za/ScreeningDownloads/AssessmentProtocols/Gazetted_Terrestrial_Biodiversity_Assessment_Protocols.pdf
6	Aquatic Biodiversity Impact	https://screening.environment.gov.za/ScreeningDownloads/AssessmentProtocols/Gazetted_Aquatic_Biodiversity_Assessment_Protocols.pdf

	Assessment	
7	Noise Impact Assessment	https://screening.environment.gov.za/ScreeningDownloads/AssessmentProtocols/Gazetted_Noise_Impacts_Assessment_Protocol.pdf
8	Traffic Impact Assessment	https://screening.environment.gov.za/ScreeningDownloads/AssessmentProtocols/Gazetted_General_Requirement_Assessment_Protocols.pdf
9	Geotechnical Assessment	https://screening.environment.gov.za/ScreeningDownloads/AssessmentProtocols/Gazetted_General_Requirement_Assessment_Protocols.pdf
10	Socio-Economic Assessment	https://screening.environment.gov.za/ScreeningDownloads/AssessmentProtocols/Gazetted_General_Requirement_Assessment_Protocols.pdf
11	Ambient Air Quality Impact Assessment	https://screening.environment.gov.za/ScreeningDownloads/AssessmentProtocols/Gazetted_General_Requirement_Assessment_Protocols.pdf
12	Plant Species Assessment	https://screening.environment.gov.za/ScreeningDownloads/AssessmentProtocols/Gazetted_Plant_Species_Assessment_Protocols.pdf
13	Animal Species Assessment	https://screening.environment.gov.za/ScreeningDownloads/AssessmentProtocols/Gazetted_Animal_Species_Assessment_Protocols.pdf

Results of the environmental sensitivity of the proposed area.

The following section represents the results of the screening for environmental sensitivity of the proposed site for relevant environmental themes associated with the project classification. It is the duty of the EAP to ensure that the environmental themes provided by the screening tool are comprehensive and complete for the project. Refer to the disclaimer.

MAP OF RELATIVE AGRICULTURE THEME SENSITIVITY

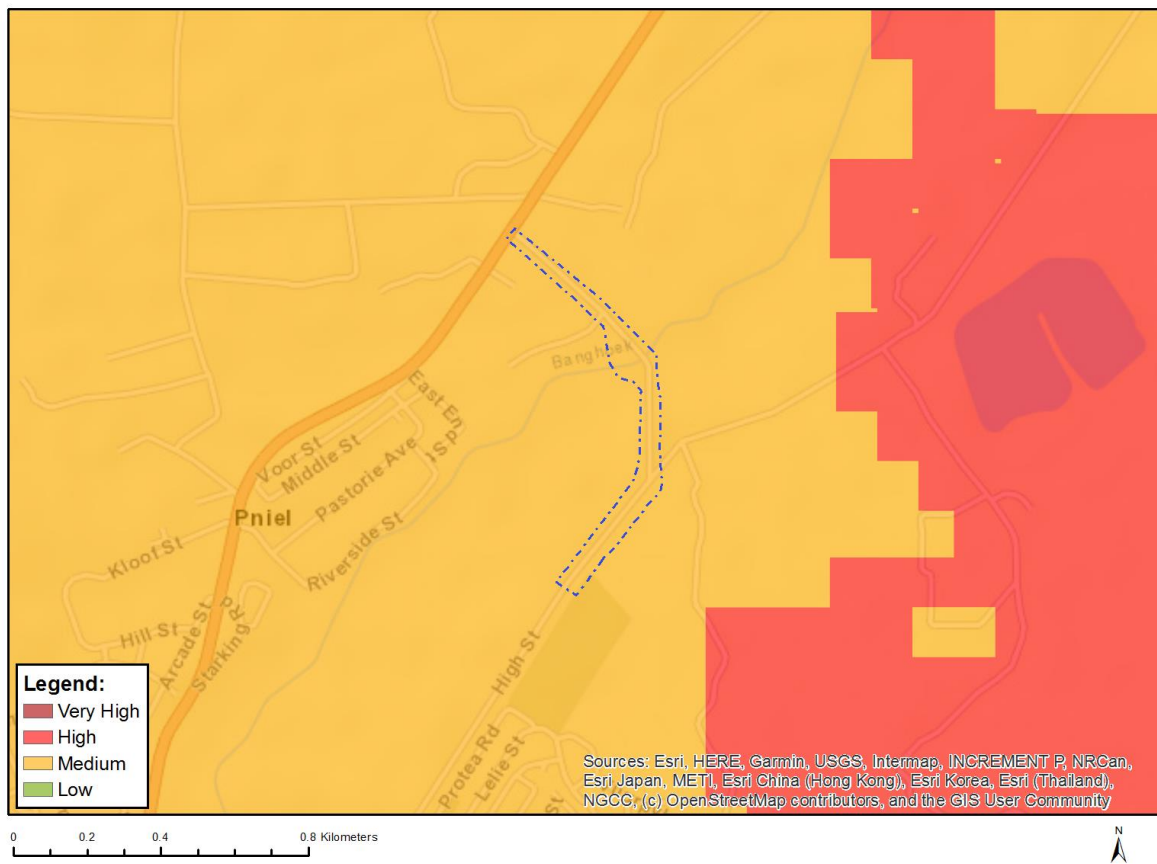


Very High sensitivity	High sensitivity	Medium sensitivity	Low sensitivity
X			

Sensitivity Features:

Sensitivity	Feature(s)
High	Land capability;09. Moderate-High/10. Moderate-High
High	Annual Crop Cultivation / Planted Pastures Rotation;Land capability;09. Moderate-High/10. Moderate-High
Medium	Land capability;06. Low-Moderate/07. Low-Moderate/08. Moderate
Very High	Horticulture;Land capability;09. Moderate-High/10. Moderate-High
Very High	Horticulture;Land capability;06. Low-Moderate/07. Low-Moderate/08. Moderate

MAP OF RELATIVE ANIMAL SPECIES THEME SENSITIVITY



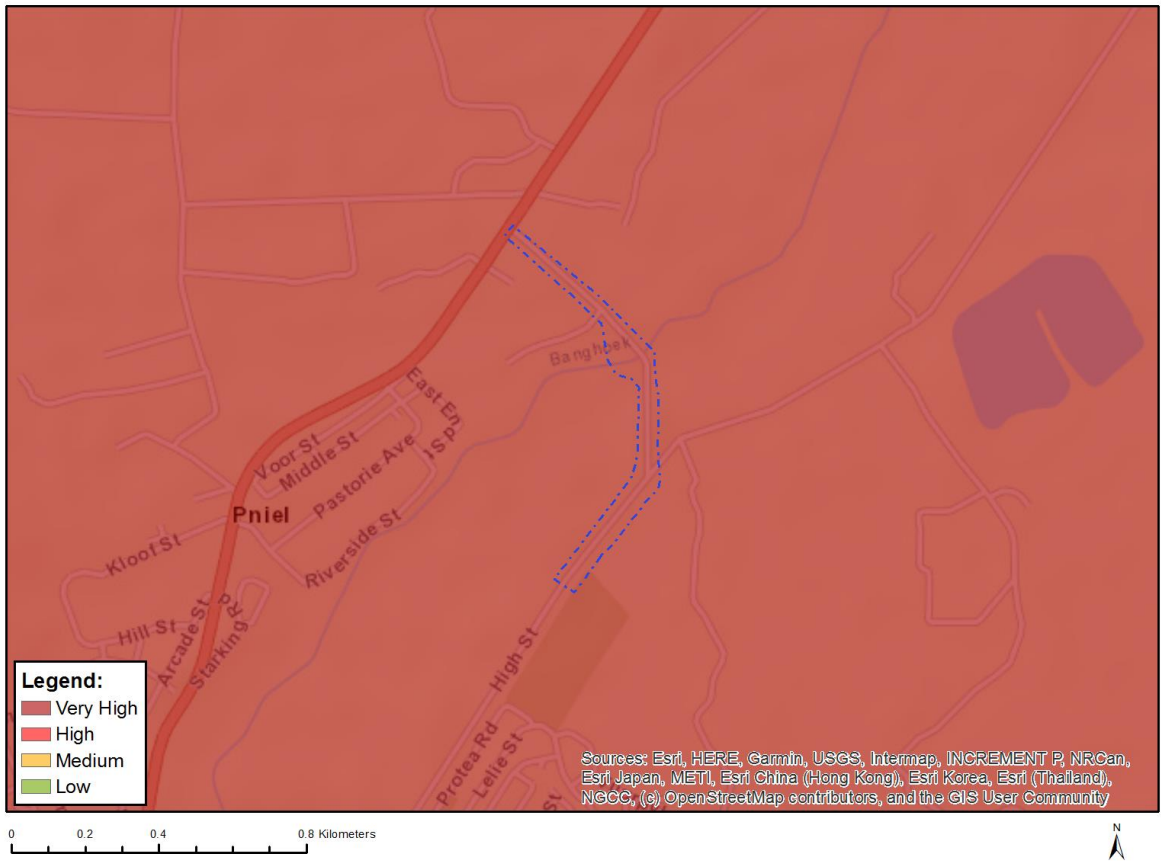
Where only a sensitive plant unique number or sensitive animal unique number is provided in the screening report and an assessment is required, the environmental assessment practitioner (EAP) or specialist is required to email SANBI at aiadatarequests@sanbi.org.za listing all sensitive species with their unique identifiers for which information is required. The name has been withheld as the species may be prone to illegal harvesting and must be protected. SANBI will release the actual species name after the details of the EAP or specialist have been documented.

Very High sensitivity	High sensitivity	Medium sensitivity	Low sensitivity
		X	

Sensitivity Features:

Sensitivity	Feature(s)
Medium	Invertebrate-Conocephalus peringueyi
Medium	Invertebrate-Aneuryphymus montanus

MAP OF RELATIVE AQUATIC BIODIVERSITY THEME SENSITIVITY

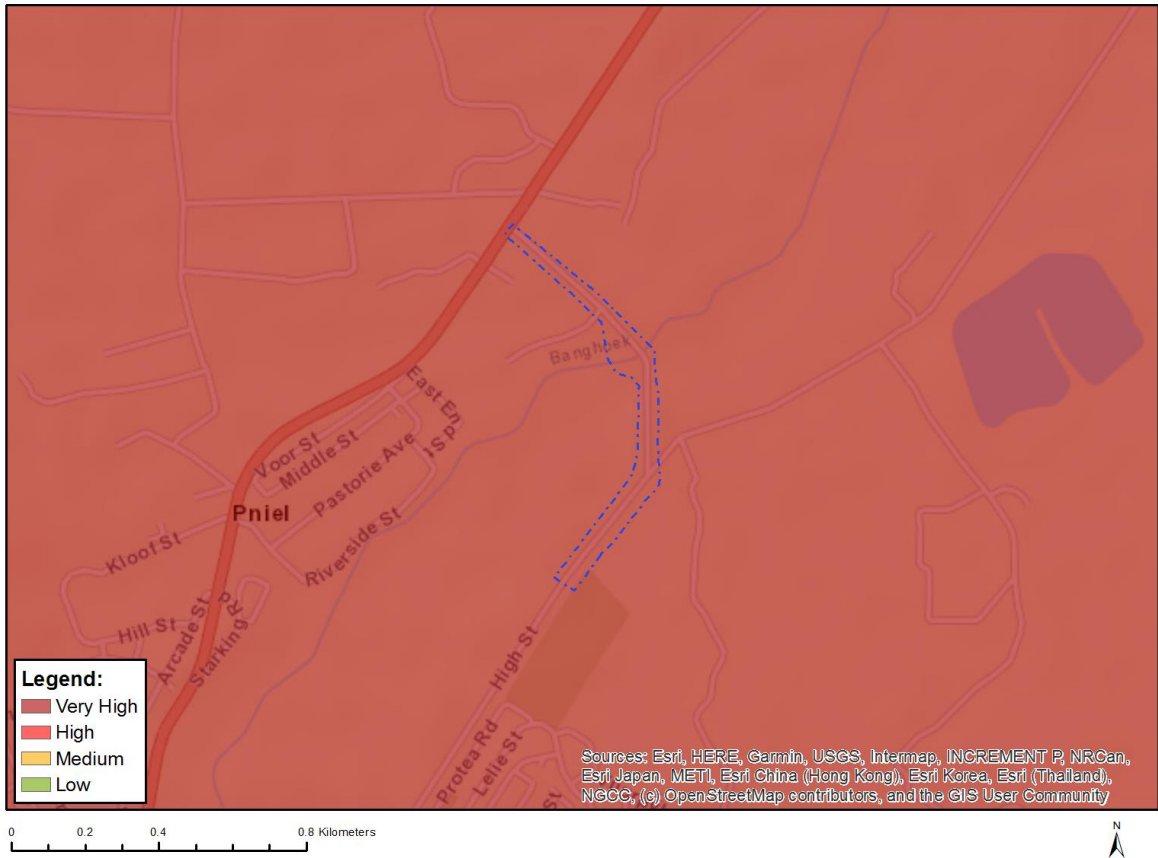


Very High sensitivity	High sensitivity	Medium sensitivity	Low sensitivity
X			

Sensitivity Features:

Sensitivity	Feature(s)
Very High	Aquatic CBAs
Very High	Rivers
Very High	Strategic water source area

MAP OF RELATIVE ARCHAEOLOGICAL AND CULTURAL HERITAGE THEME SENSITIVITY

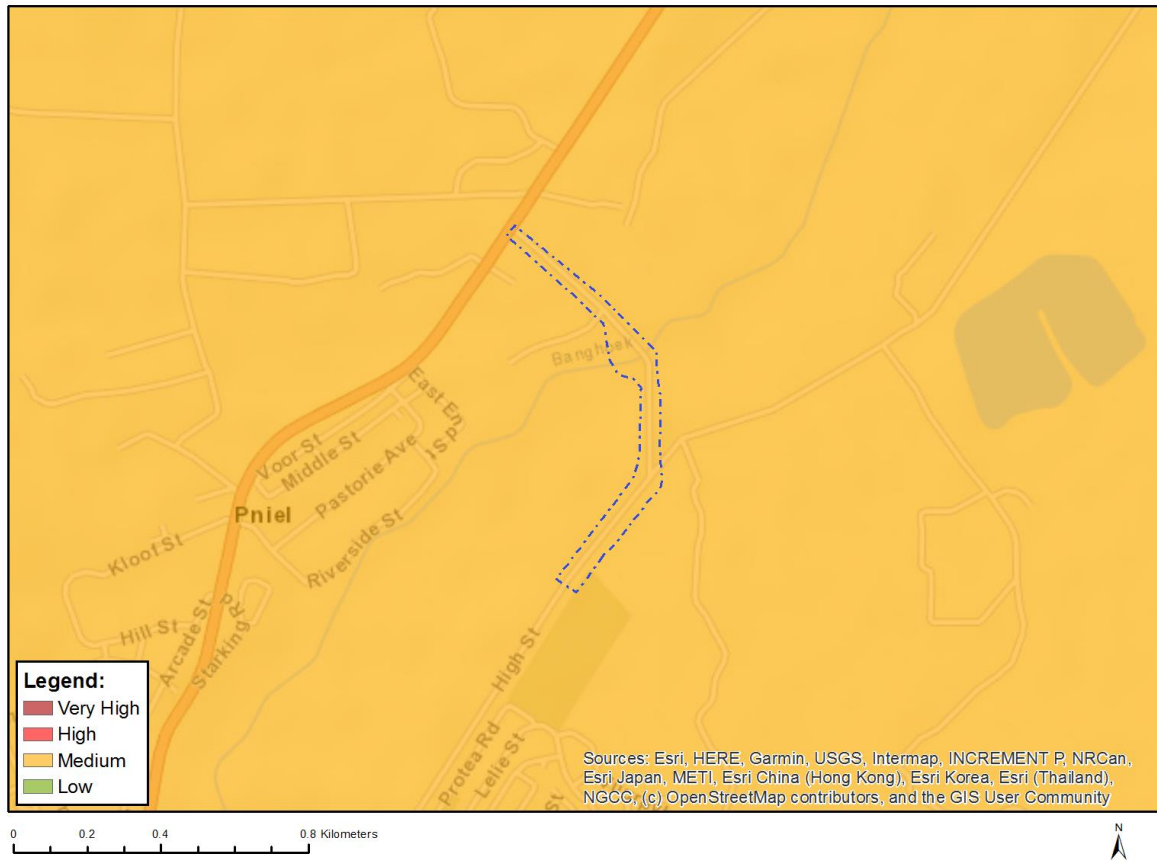


Very High sensitivity	High sensitivity	Medium sensitivity	Low sensitivity
X			

Sensitivity Features:

Sensitivity	Feature(s)
Very High	Within 5km of a Grade I Heritage site
Very High	Within 2km of a Grade II Heritage site

MAP OF RELATIVE CIVIL AVIATION THEME SENSITIVITY

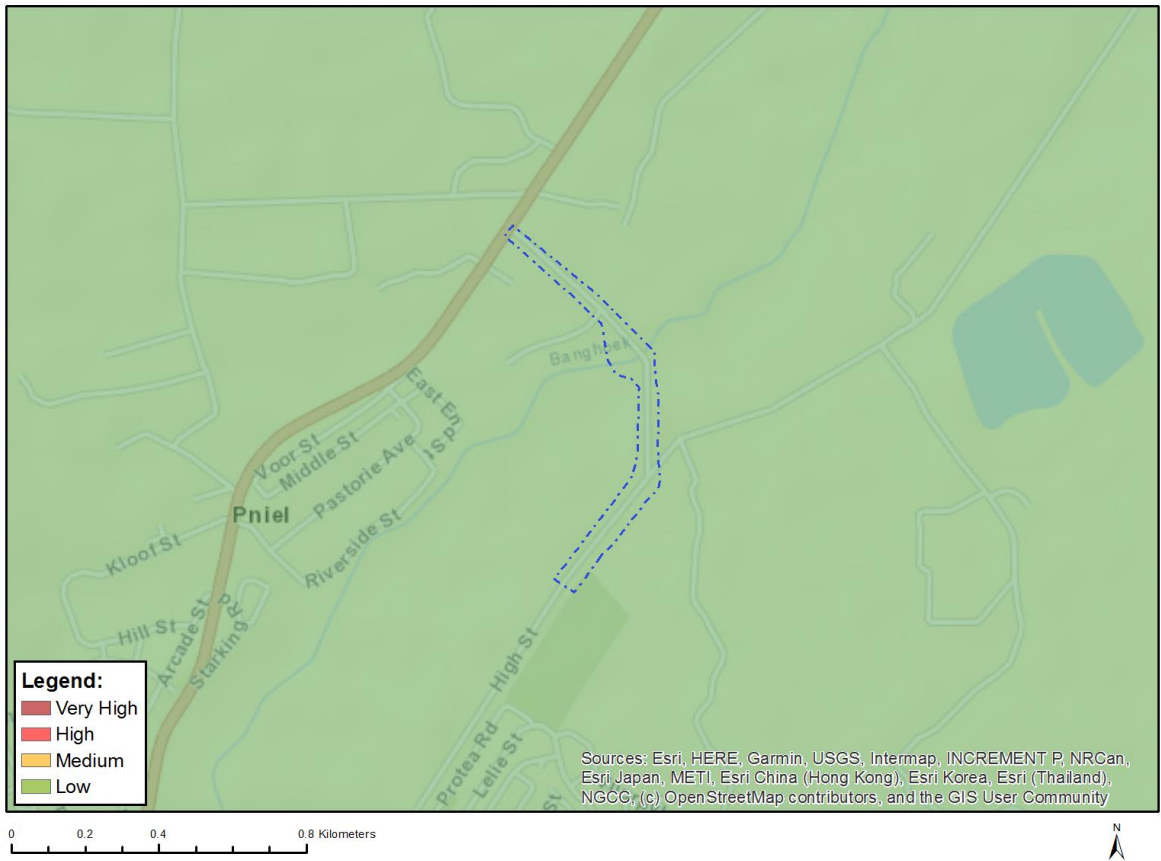


Very High sensitivity	High sensitivity	Medium sensitivity	Low sensitivity
		X	

Sensitivity Features:

Sensitivity	Feature(s)
Medium	Between 15 and 35 km from a civil aviation radar
Medium	Between 15 and 35 km from a major civil aviation aerodrome
Medium	Between 8 and 15 km of other civil aviation aerodrome

MAP OF RELATIVE DEFENCE THEME SENSITIVITY

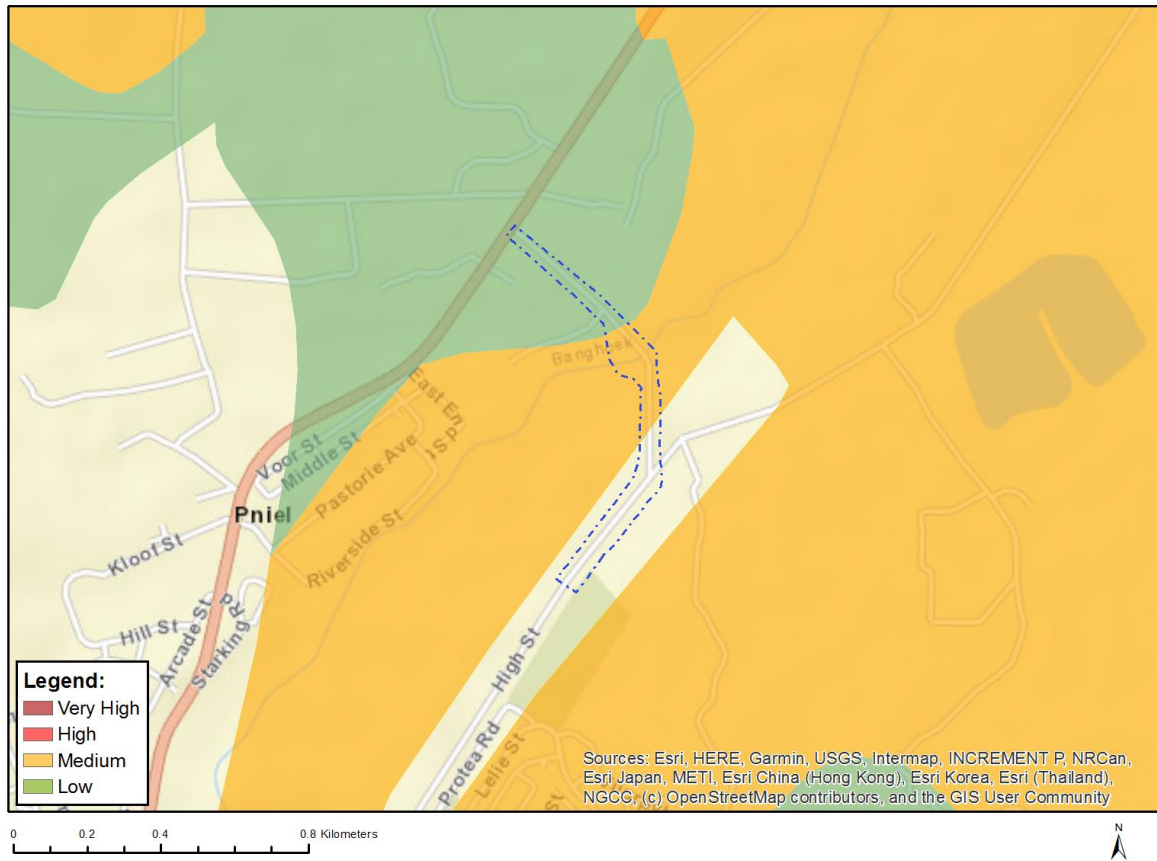


Very High sensitivity	High sensitivity	Medium sensitivity	Low sensitivity
			X

Sensitivity Features:

Sensitivity	Feature(s)
Low	Low Sensitivity

MAP OF RELATIVE PALEONTOLOGY THEME SENSITIVITY

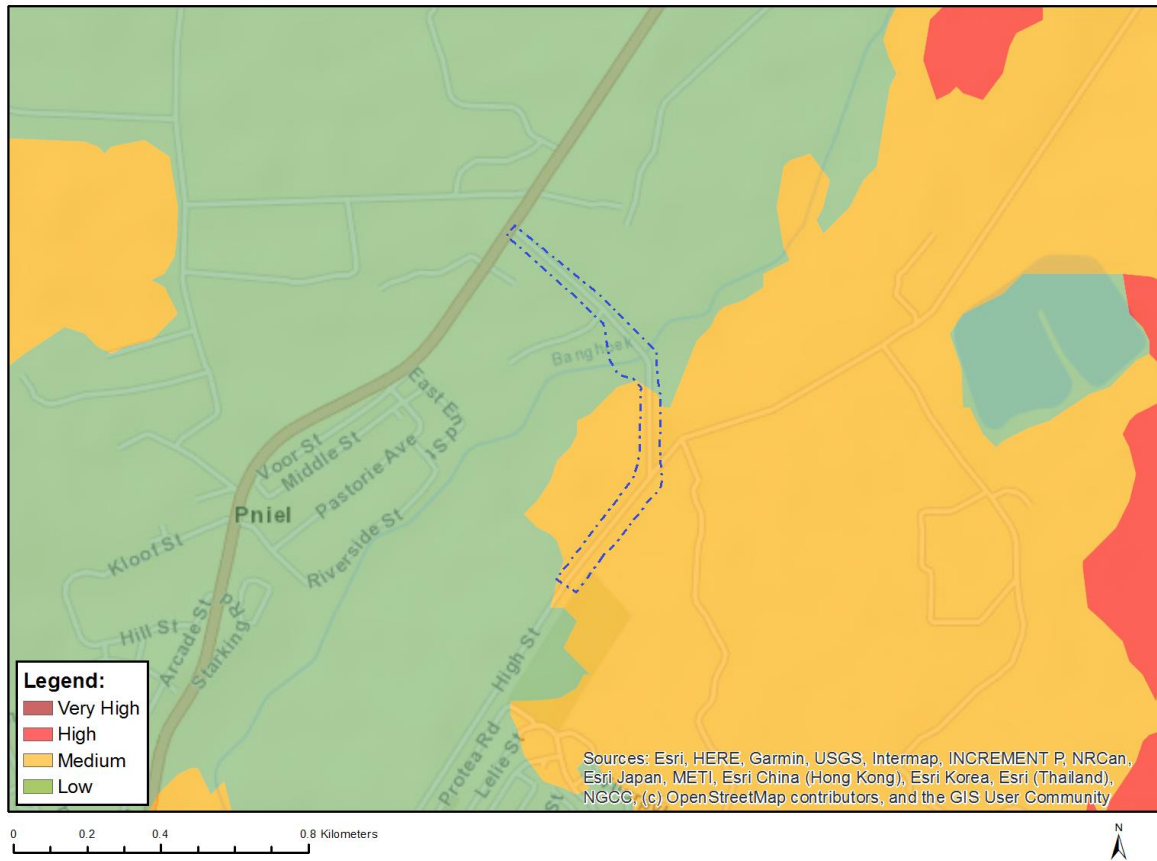


Very High sensitivity	High sensitivity	Medium sensitivity	Low sensitivity
		X	

Sensitivity Features:

Sensitivity	Feature(s)
Low	Features with a Low paleontological sensitivity
Medium	Features with a Medium paleontological sensitivity

MAP OF RELATIVE PLANT SPECIES THEME SENSITIVITY



Where only a sensitive plant unique number or sensitive animal unique number is provided in the screening report and an assessment is required, the environmental assessment practitioner (EAP) or specialist is required to email SANBI at eiadatarequests@sanbi.org.za listing all sensitive species with their unique identifiers for which information is required. The name has been withheld as the species may be prone to illegal harvesting and must be protected. SANBI will release the actual species name after the details of the EAP or specialist have been documented.

Very High sensitivity	High sensitivity	Medium sensitivity	Low sensitivity
		X	

Sensitivity Features:

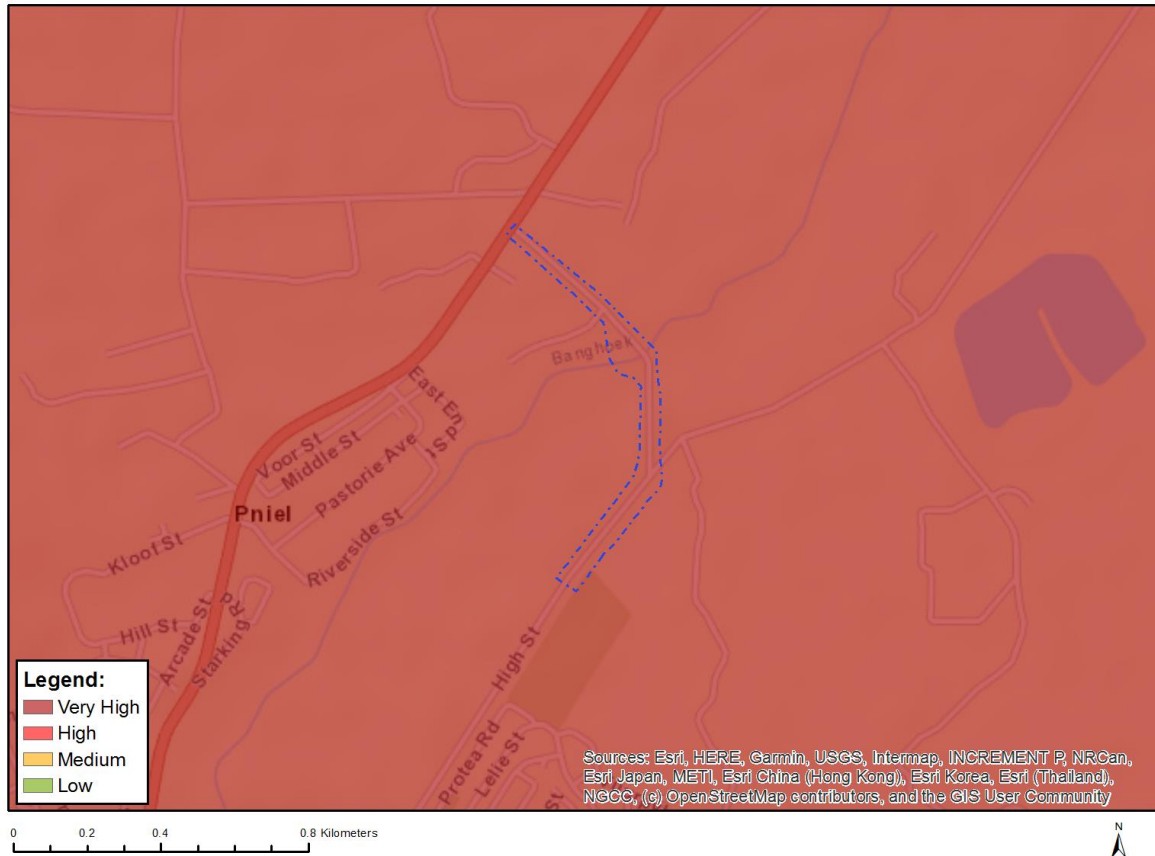
Sensitivity	Feature(s)
Low	Low Sensitivity
Medium	Lampranthus aureus
Medium	Lampranthus dilutus
Medium	Lampranthus filicaulis
Medium	Lampranthus leptaleon
Medium	Lampranthus peacockiae
Medium	Lampranthus scaber
Medium	Lampranthus sociorum
Medium	Lampranthus spiniformis
Medium	Antimima aristulata
Medium	Erepsia patula
Medium	Erepsia ramosa
Medium	Ruschia diversifolia

Medium	<i>Ruschia schollii</i>
Medium	<i>Drosanthemum hispidifolium</i>
Medium	<i>Xiphotheca lanceolata</i>
Medium	<i>Psoralea fascicularis</i>
Medium	<i>Indigofera psoraloides</i>
Medium	<i>Aspalathus aculeata</i>
Medium	<i>Aspalathus araneosa</i>
Medium	<i>Aspalathus attenuata</i>
Medium	<i>Aspalathus globosa</i>
Medium	<i>Aspalathus macrantha</i>
Medium	<i>Aspalathus muraltioides</i>
Medium	<i>Otholobium rotundifolium</i>
Medium	<i>Rafnia lancea</i>
Medium	<i>Podalyria argentea</i>
Medium	<i>Podalyria sericea</i>
Medium	<i>Leucadendron argenteum</i>
Medium	<i>Leucadendron corymbosum</i>
Medium	<i>Leucadendron daphnoides</i>
Medium	<i>Leucadendron lanigerum</i> var. <i>lanigerum</i>
Medium	<i>Leucospermum grandiflorum</i>
Medium	<i>Leucospermum gueinzii</i>
Medium	<i>Leucospermum hypophyllocarpodendron</i> subsp. <i>canaliculatum</i>
Medium	<i>Leucospermum hypophyllocarpodendron</i> subsp. <i>hypophyllocarpodendron</i>
Medium	<i>Leucospermum lineare</i>
Medium	<i>Protea burchellii</i>
Medium	<i>Protea lacticolor</i>
Medium	<i>Protea scorzonerifolia</i>
Medium	<i>Diastella buekii</i>
Medium	<i>Serruria kraussii</i>
Medium	<i>Serruria pinnata</i>
Medium	<i>Serruria gracilis</i>
Medium	<i>Merciera tetraloba</i>
Medium	<i>Pentameris bachmannii</i>
Medium	<i>Anthospermum ericifolium</i>
Medium	<i>Lobostemon capitatus</i>
Medium	<i>Lobostemon regulariflorus</i>
Medium	<i>Echiostachys incanus</i>
Medium	<i>Aristea lugens</i>
Medium	<i>Aristea cantharophila</i>
Medium	<i>Tritoniopsis elongata</i>
Medium	<i>Hesperantha spicata</i> subsp. <i>spicata</i>
Medium	Sensitive species 631
Medium	Sensitive species 533
Medium	Sensitive species 1134
Medium	<i>Geissorhiza brehmii</i>
Medium	<i>Geissorhiza humilis</i>
Medium	<i>Geissorhiza erosa</i>
Medium	<i>Sparaxis grandiflora</i> subsp. <i>grandiflora</i>
Medium	<i>Ixia erubescens</i>
Medium	<i>Ixia rouxii</i>
Medium	<i>Ixia sarmentosa</i>
Medium	Sensitive species 560
Medium	Sensitive species 1253
Medium	Sensitive species 1
Medium	Sensitive species 830
Medium	Sensitive species 112
Medium	Sensitive species 1140
Medium	Sensitive species 298
Medium	Sensitive species 807
Medium	Sensitive species 452

Medium	Sensitive species 567
Medium	Sensitive species 863
Medium	<i>Pauridia alba</i>
Medium	<i>Pauridia pygmaea</i>
Medium	<i>Oxalis strigosa</i>
Medium	<i>Erica filiformis</i> var. <i>filiformis</i>
Medium	<i>Erica sacciflora</i>
Medium	<i>Erica abietina</i> subsp. <i>perfoliosa</i>
Medium	<i>Hermannia rugosa</i>
Medium	Sensitive species 769
Medium	Sensitive species 222
Medium	Sensitive species 444
Medium	Sensitive species 259
Medium	Sensitive species 478
Medium	Sensitive species 756
Medium	<i>Adenogramma rigida</i>
Medium	<i>Wachendorfia brachyandra</i>
Medium	<i>Hessea cinnamomea</i>
Medium	Sensitive species 847
Medium	<i>Isoetes capensis</i>
Medium	Sensitive species 133
Medium	<i>Trianoptiles solitaria</i>
Medium	<i>Cannomois arenicola</i>
Medium	<i>Hypodiscus rugosus</i>
Medium	<i>Restio duthieae</i>
Medium	<i>Restio papillosus</i>
Medium	<i>Restio pratensis</i>
Medium	Sensitive species 985
Medium	Sensitive species 120
Medium	Sensitive species 384
Medium	Sensitive species 682
Medium	<i>Lachnaea uniflora</i>
Medium	<i>Metalasia capitata</i>
Medium	<i>Senecio verbascifolius</i>
Medium	<i>Athanasia capitata</i>
Medium	<i>Arctotis angustifolia</i>
Medium	Sensitive species 1042
Medium	<i>Agathosma propinqua</i>
Medium	<i>Cliffortia ericifolia</i>
Medium	<i>Cliffortia marginata</i>
Medium	<i>Cliffortia phillipsii</i>
Medium	<i>Muraltia decipiens</i>
Medium	<i>Muraltia macropetala</i>
Medium	Sensitive species 262
Medium	Sensitive species 616
Medium	<i>Wurmbea inusta</i>
Medium	<i>Phylica dioica</i>
Medium	<i>Phylica strigulosa</i>
Medium	<i>Phylica thunbergiana</i>
Medium	<i>Orthochilus litoralis</i>
Medium	<i>Codonrhiza azurea</i>
Medium	<i>Skiatophytum skiatophytoides</i>
Medium	<i>Lampranthus debilis</i>
Medium	<i>Lampranthus glaucus</i>
Medium	<i>Xiphotheca reflexa</i>
Medium	<i>Psoralea alata</i>
Medium	<i>Aspalathus lebeckioides</i>
Medium	<i>Aspalathus recurva</i>
Medium	<i>Ophioglossum bergianum</i>
Medium	Sensitive species 593

Medium	Sensitive species 335
Medium	Sensitive species 599
Medium	Elegia squamosa
Medium	Restio paludosus
Medium	Restio rigoratus
Medium	Lachnaea capitata
Medium	Lachnaea grandiflora
Medium	Cotula pusilla
Medium	Sensitive species 1225

MAP OF RELATIVE TERRESTRIAL BIODIVERSITY THEME SENSITIVITY



Very High sensitivity	High sensitivity	Medium sensitivity	Low sensitivity
X			

Sensitivity Features:

Sensitivity	Feature(s)
Very High	Critical biodiversity area 1
Very High	Ecological support area 1
Very High	Ecological support area 2
Very High	Strategic Water Source Areas
Very High	Critically endangered ecosystem
Very High	Vulnerable ecosystem