



No. 32

6 AUGUST 2022



UNITED STATES OF AMERICA

NOTICE TO MARINERS



Published Weekly by the
National Geospatial-Intelligence Agency

Prepared Jointly with the
National Ocean Service and U.S. Coast Guard

Contents

Section I

Chart Corrections	I-1.1
Chartlets / Depth Tabulations / Notes	I-2.1
Charts Affected by Notice to Mariners	I-3.1

Section II

NGA/DLIS Catalog Corrections	NONE
Navigation Publications Corrections	NONE
USCG Light List Corrections / Radiobeacon Corrections	NONE
NGA List of Lights / Radiobeacon / DGPS Corrections	NONE
Publications Affected by Notice to Mariners	NONE

Section III

Marine Information	III-1.1
------------------------------	---------

Visit the Maritime Safety Web site at <https://msi.nga.mil>

IMPORTANT INFORMATION

The Notice to Mariners is published by the National Geospatial-Intelligence Agency (NGA), under the authority of Department of Defense Directive 5105.60, to advise mariners of important matters affecting navigational safety, including new hydrographic discoveries, changes in channels and navigational aids, etc. (U.S. Code Title 10, Sec. 442 and Title 44, Sec. 1336 refer). Nothing in the arrangement of information implies endorsement or acceptance by NGA in matters affecting the status and boundaries of States and territories. The Notice to Mariners presents corrective information affecting charts, NGA/DLIS Catalog of Maps Charts and Related Products, Coast Pilots, USCG Light Lists, NGA List of Lights and other products produced by the National Geospatial-Intelligence Agency, National Ocean Service and U.S. Coast Guard.

Information for the Notice to Mariners is contributed by the following Agencies: National Geospatial-Intelligence Agency (NGA) (Department of Defense) for waters outside the territorial limits of the United States; National Ocean Service (NOS) (Department of Commerce), which is charged with the surveys and charting of the coasts and harbors of the United States and its territories; the U.S. Coast Guard (USCG) (Department of Homeland Security), which is responsible for the safety of life at sea and the establishment and operation of aids to navigation; and the U.S. Army Corps of Engineers (Department of Defense), which is charged with the improvement of rivers and harbors of the United States. In addition, important contributions are made by foreign hydrographic offices and cooperating observers of all nationalities.

For further information concerning NGA hydrographic products and services, including the Maritime Safety Web site, users may contact:

<u>Name</u>	<u>Telephone</u>	<u>DSN</u>	<u>FAX</u>
Maritime Safety Office	571-557-8384	N/A	571-558-3213
NGA Maritime Safety Watch	571-557-5455	547-5455	571-558-3426
Maritime Safety Web site	571-557-7103	547-7103	N/A
Notice to Mariners: Regions 1 and 2	571-557-8282	547-8282	571-558-3213
Notice to Mariners: Regions 3 thru 9	571-557-8383	547-8383	571-558-3213
Sailing Directions, Fleet Guides	571-557-5831	547-5831	571-558-3213
Navigation Publications	571-557-8080	547-8080	571-558-3213
NGA/DLIS Catalog of Maps Charts and Related Products	269-961-7766	661-7766	269-961-7791

The Maritime Safety Web site can be accessed directly at <https://msi.nga.mil>. For your convenience, NGA provides the following e-mail addresses: For information affecting Notice to Mariners, Sailing Directions and all other navigational publications, use MarHelp@nga.mil; for information concerning the Maritime Safety Web site, use webmaster_nss@nga.mil; and for information concerning the World Wide Navigational Warning Service, use NavSafety@nga.mil.

Note: New editions cancel former editions. They include corrections published in the Notice to Mariners prior to the effective date of the new editions and/or important corrections from other sources. Mariners are warned against the use of obsolete charts and publications as new editions contain information essential to safe navigation; however, such new editions are not valid until their announcement in the weekly Notice to Mariners.

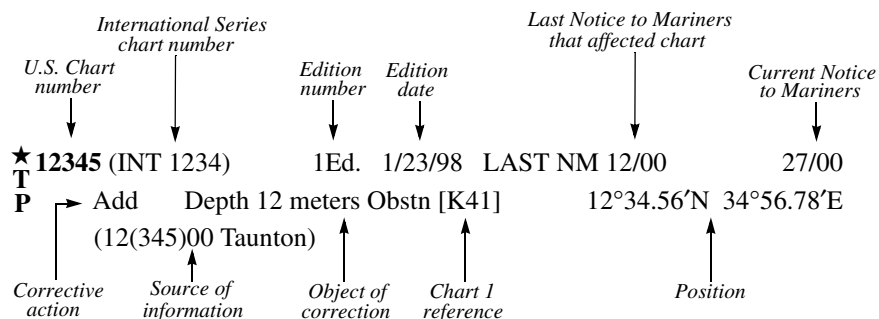
Mariners are requested to notify NGA of discrepancies in charts and publications, using the Marine Information Report and Suggestion Sheet at the back of this Notice to Mariners. This form should also be used to report permanent changes, additions, or deletions from charted or published information. Reports which constitute an immediate hazard to navigation should be sent to the nearest NAVAREA Coordinator via coast radio stations. All reports are greatly appreciated.

Cover Photo: USS The Sullivans (DD-537) is a retired Fletcher-class destroyer and the first commissioned US Navy ship to honor more than one person. She was named for the five Sullivan brothers: George, Francis, Joseph, Madison, and Albert. The brothers were killed in action in November of 1942 during the Naval Battle of Guadalcanal when the **USS Juneau** was sunk by a Japanese submarine, constituting the greatest loss by a single American family in World War II. The brothers had insisted on serving together, despite the Navy's policy to separate family members. Though she was named Sullivan before her launch, President Franklin D. Roosevelt clarified that the vessel honored all five brothers and **The Sullivans** was launched in April 1943. She saw action in the Pacific theater, where she was one of the few undamaged survivors of Halsey's Typhoon and the Korean war, earning eleven battle stars before her decommissioning in January of 1965. She was declared a National Historic Landmark in 1986 and is currently a memorial museum ship in Buffalo, NY.

EXPLANATION OF CONTENTS

The Notice to Mariners contains corrective information affecting nautical charts, the NGA/DLIS Catalog of Maps Charts and Related Products, Coast Pilots, USCG Light Lists, NGA List of Lights and other related nautical publications. The information contained in these corrections is important to safe navigation. It is the user's responsibility to decide which of their charts and publications require correction. Consult the U.S. Coast Guard Local Notice to Mariners for information pertaining to waterways within the United States that are not normally used by oceangoing vessels. Because of the sometimes transitory nature of aids to navigation, depths and port information, local area sources should be consulted whenever possible. This publication is not required to be maintained intact. Portions may be separated for correction or attachment to an affected product. The Notice to Mariners is divided into the following sections:

Section I-1 contains corrections to nautical charts listed in numeric order by chart number. Each chart correction listed applies only to that particular chart. Related charts, if any, will have their own specific correction listed separately. Users should also refer to U.S. Chart 1 Nautical Chart Symbols, Abbreviations and Terms for additional information pertaining to the correcting of charts. The illustration below describes the elements that comprise a typical chart correction:



A chart correction preceded by:

★ indicates that it is based upon original U.S. source information.

T indicates that it is temporary in nature.

P indicates that it is preliminary, and that permanent corrective action will appear in a future Notice to Mariners.

The letter M immediately following the chart number indicates that the correction should be applied to the metric side of the chart only. The letter N is not a part of the chart number.

The letter L preceding the current Notice to Mariners number indicates that the affected chart is on Limited Distribution and is normally only for use by U.S. Navy, government-owned or -chartered vessels.

Position coordinates are referred to the horizontal datum of the affected chart.

Courses and bearings are given in degrees true.

Light sectors are expressed in degrees true from the vessel TOWARD the light.

The visible range(s) listed for lights is normally the nominal range (the distance at which it can be seen in clear weather), expressed in nautical miles, except in the Great Lakes where it is expressed in statute miles.

The colors of structures and lights of navigational aids are abbreviated in accordance with Chart 1.

Section I-2 contains all chartlets, depth tabulations and notes associated with the chart corrections in Section I-1. Chartlets and depth tabulations supersede all previous information portrayed.

Section I-3 lists all NGA and NOS charts which have been affected by Notice to Mariners and the notice numbers which have affected them since the date of the oldest Summary of Corrections or the chart's announcement, whichever is later.

Section II is no longer included in this notice.

Section III-1 contains miscellaneous information of particular interest to the maritime community.

SECTION I
CHART CORRECTIONS

NM 32/22

- 508** (INT 508) 2Ed. 05/18/96 LAST NM 18/22 32/22
Delete Dangerous wreck 6°25'S 112°51'E
(36(479)19 Jakarta)
- ★**11361** 78Ed. 06/01/15 LAST NM 29/22 32/22
Relocate Light "14" from 29°08'00"N 89°14'32"W to 29°08'00"N 89°14'34"W
(26/22 CG8)
- ★**11364** 46Ed. 04/01/18 LAST NM 21/22 32/22
Add Light Fl G 2.5s with legend "Priv" 29°36'21"N 89°52'44"W
Light Fl G 2.5s with legend "Priv" 29°36'21"N 89°52'35"W
Light Fl G 2.5s with legend "Priv" 29°36'20"N 89°52'32"W
Light Fl G 2.5s with legend "Priv" 29°36'18"N 89°52'30"W
(26/22 CG8)
- ★**11416** 16Ed. 10/01/20 LAST NM 31/22 32/22
Change Rear range light to Iso R 6s, Fl W 2.5s 27°49'38.8"N 82°24'48.3"W
(27/22 CG7)
- ★**11491** 40Ed. 09/01/19 LAST NM 31/22 32/22
(Side A)
Add Buoy "C" Y, can 30°23'03.7"N 81°32'28.4"W
(NOS; 27/22 CG7)
- ★**14860** 37Ed. 05/01/16 LAST NM 04/20 32/22
Add Buoy "1" Y, Fl Y 4s with legend "Priv" [Q130.6] 43°07.6'N 82°23.5'W
(NOS; 26/22 CG9)
- ★**14862** 29Ed. 05/01/16 LAST NM 04/20 32/22
Add Buoy "1" Y, Fl Y 4s with legend "Priv" [Q130.6] 43°07'38"N 82°23'29"W
(NOS; 26/22 CG9)
- ★**14865** 17Ed. 02/01/14 LAST NM 28/19 32/22
Add Buoy "1" Y, Fl Y 4s with legend "Priv" [Q130.6] 43°07'38.3"N 82°23'29.2"W
(NOS; 26/22 CG9)
- 17440** 2Ed. 01/13/17 LAST NM N30/22 N32/22
Substitute Rock which covers and uncovers with drying height 0.3 meter [K11] for depth 0.6 meter 54°01'37.9"N 130°41'09.1"W
(6/22 Ottawa)
- 17442** 2Ed. 07/01/16 LAST NM N30/22 N32/22
Substitute Depth 1.1 meters enclosed by depth contour (2-meter) for depth 6.4 meters 53°50'14"N 130°40'24"W

Add Depth 1.9 meters enclosed by depth contour (2-meter) centered 53°53'49"N 130°43'38"W
Depth 2 meters, blue tint, and enclosing depth contour (2-meter) centered 53°52'25"N 130°44'24"W
Depth 0.6 meter enclosed by depth contour (2-meter) centered 53°51'17"N 130°43'06"W
(6/22 Ottawa)
- ★**18400** 51Ed. 08/01/19 LAST NM 26/22 32/22
Delete Racon from buoy "SA" 48°11.5'N 122°49.8'W
(NOS)
- ★**18440** 31Ed. 04/01/17 LAST NM 26/22 32/22
Delete Racon from buoy "SA" 48°11.5'N 122°49.8'W
(NOS)
- ★**18441** 49Ed. 04/01/20 LAST NM 26/22 32/22
Delete Racon from buoy "SA" 48°11'27"N 122°49'48"W
(NOS)
- ★**18465** 39Ed. 10/01/11 LAST NM 26/22 32/22
Delete Racon from buoy "SA" 48°11'27"N 122°49'48"W
(NOS)
- 18467** 2Ed. 05/18/07 LAST NM N27/22 N32/22
Delete Depth 3.5 meters 48°40'53.7"N 123°23'33.1"W

Add Depth 1.4 meters enclosed by depth contour (2-meter) centered 48°40'53.7"N 123°23'31.8"W

(Plan Iroquois Passage and John Passage)
Delete Depth 3.5 meters 48°40'53.7"N 123°23'33.1"W

Add Depth 1.5 meters enclosed by depth contour (2-meter) centered 48°41'21.1"N 123°23'46.2"W
Depth 1.4 meters meter enclosed by depth contour (2-meter) centered 48°40'53.7"N 123°23'31.8"W
(6/22 Ottawa)
- ★**18471** 11Ed. 12/01/07 LAST NM 26/22 32/22
Delete Racon from buoy "SA" 48°11'27.0"N 122°49'48.0"W
(NOS)
- 24155** 7Ed. 12/1/12 LAST NM N14/22 N32/22
Add Chartlet A from Subsection I-2 23°05'07"S 44°04'00"W
Chartlet B from Subsection I-2 23°02'14"S 44°04'00"W
Chartlet C from Subsection I-2 23°00'35"S 44°00'57"W
(12(89)21 Rio de Janeiro; BRA CH 1621, 1624)
- 37000** 23Ed. 03/27/10 LAST NM 47/21 32/22
Add Superbuoy "IJV B1" Y, Fl(5) Y 20s with legend "ODAS" [Q58] 52°53.7'N 3°41.1'E
Superbuoy "IJV A1" Y, Fl(5) Y 20s with legend "ODAS" [Q58] 52°53.1'N 3°42.7'E
(17(125)22 Den Haag)
- 37010** 25Ed. 02/15/14 LAST NM N21/22 N32/22
Delete Platform 52°46.7'N 4°16.0'E
Light float "Humber" 53°38.8'N 0°20.1'E

Add Superbuoy "IJV B1" Y, Fl(5) Y 20s with legend "ODAS" [Q58] 52°53.7'N 3°41.1'E
Superbuoy "IJV A1" Y, Fl(5) Y 20s with legend "ODAS" [Q58] 52°53.1'N 3°42.7'E
(17(125), 20(147)22 Den Haag; 12(1086)22 Taunton)
- 37036** (INT 1425) 5Ed. 03/26/20 LAST NM N29/22 N32/22
Delete Depth 7.8 meters 51°28.15'N 0°15.16'E
(See N20/22)

Add Depth 7.1 meters 51°28.14'N 0°15.19'E
(29(3015)22 Taunton)
- 37162** 14Ed. 09/28/13 LAST NM N20/22 N32/22
Delete Platform "Q4-A" and prohibited area in vicinity 52°46.7'N 4°16.0'E

Add Foul ground symbol [K31.1] 52°28.6'N 4°05.8'E

Buoy "WF-HZ-3E" BYB, pillar, double cone topmark bases together, VQ(3) W 5s [Q130.3] 52°11.9'N 4°03.5'E

Buoy "WF-HZ-3W" YBY, pillar, double cone topmark points together, VQ(9) W 10s [Q130.3] 52°12.8'N 3°56.7'E

Superbuoy "IJV B1" Y, Fl(5) Y 20s with legend "ODAS" [Q58] 52°53.7'N 3°41.1'E
Superbuoy "IJV A1" Y, Fl(5) Y 20s with legend "ODAS" [Q58] 52°53.1'N 3°42.7'E
(11(78), 17(125), 20(147), 27(189)22 Den Haag)
- 37164** 6Ed. 08/31/13 LAST NM N20/22 N32/22
Delete Buoy "WF-HZ-2S" 52°15'17"N 3°59'56"E

Add Foul ground symbol [K31.1] 52°28'38"N 4°05'48"E
Buoy "WF-HZ-3E" BYB, pillar, double cone topmark bases together, VQ(3) W 5s [Q130.3] 52°11'55"N 4°03'30"E
(11(78), 27(189)22 Den Haag)

37166 4Ed. 01/11/14 LAST NM N21/22 N32/22
 Delete Platform "Q4-A" 52°46.7'N 4°16.0'E
 Add Foul ground symbol [K31.1] 52°28.6'N 4°05.8'E
 Buoy "WF-HZ-3E" BYB, pillar, double cone topmark bases together, VQ(3) W 5s [Q130.3] 52°11.9'N 4°03.5'E
 Buoy "WF-HZ-3W" YBY, pillar, double cone topmark points together, VQ(9) W 10s [Q130.3] 52°12.8'N 3°56.7'E
 Superbuoy "IJV B1" Y, Fl(5) Y 20s with legend "ODAS" [Q58] 52°53.7'N 3°41.1'E
 Superbuoy "IJV A1" Y, Fl(5) Y 20s with legend "ODAS" [Q58] 52°53.1'N 3°42.7'E
 (11(78), 17(125), 20(147), 27(189)22 Den Haag)

37222 15Ed. 05/12/18 LAST NM N31/22 N32/22
 Relocate Buoy "A 3/H 6" from 53°33.44'N 6°38.49'E to 53°33.17'N 6°38.15'E
 Add Depth 0.5 meter, blue tint, and enclosing depth contour (5-meter) centered 53°32.09'N 6°40.10'E
 Depth 0.1 meter, blue tint, and enclosing depth contour (5-meter) centered 53°32.31'N 6°39.97'E
 (26(1110)22 Hamburg; 27(192)22 Den Haag)

37224 12Ed. 11/03/12 LAST NM N13/22 N32/22
 Add Buoy "E-Gas" BYB, spar, double cone topmark bases together, VQ(3) W 5s [Q130.3] 53°21'14.4"N 6°58'37.2"E
 (27(193)22 Den Haag)

37241 22Ed. 03/09/19 LAST NM N13/22 N32/22
 Delete Buoy "WF-HZ-2S" 52°15.28'N 3°59.92'E
 Add Buoy "WF-HZ-3E" BYB, pillar, double cone topmark bases together, VQ(3) W 5s [Q130.3] 52°11.91'N 4°03.50'E
 Buoy "WF-HZ-3W" YBY, pillar, double cone topmark points together, VQ(9) W 10s [Q130.3] 52°12.77'N 3°56.71'E
 (11(78)22 Den Haag)

37246 17Ed. 01/25/20 LAST NM N24/22 N32/22
 Delete Buoy "SS 2" 51°25'38"N 3°37'38"E
 Buoy "SS 3" 51°25'02"N 3°37'18"E
 Buoy "SS 4" 51°25'14"N 3°37'49"E
 Buoy "SS 6" 51°25'18"N 3°38'51"E
 Buoy "SS 7" 51°25'08"N 3°38'37"E
 Buoy "SS 8" 51°25'25"N 3°39'50"E
 Buoy "SS 10" 51°24'53"N 3°40'50"E
 Buoy "SS 12" 51°24'21"N 3°41'24"E
 Buoy "SS 9" 51°25'06"N 3°39'49"E
 (See N07/22)
 Substitute Buoy "ARV 5" Y, pillar, "X" topmark [Q130.6] for buoy "SS 5" 51°24'43"N 3°38'02"E
 Change Designation of buoy "SS 11" to "SS 9" 51°24'41"N 3°40'35"E
 Buoy "SS 13" to "SS 11" G, pillar, cone topmark 51°24'10"N 3°41'05"E
 Add Buoy "SS 2" R, can, QR 51°25'30"N 3°37'55"E
 Buoy "SS 3" G, conical, QG 51°25'08"N 3°38'30"E
 Buoy "SS 4" R, pillar 51°25'31"N 3°39'13"E
 Buoy "SS 5" G, conical, Iso G 8s 51°25'10"N 3°39'16"E
 Buoy "SS 6" R, pillar, Iso R 4s 51°25'20"N 3°40'07"E
 Buoy "SS 7" G, pillar, cone topmark, Iso G 4s 51°25'03"N 3°39'56"E
 Buoy "SS 8" R, pillar 51°24'58"N 3°40'56"E
 Buoy "SS 10" R, pillar, can topmark, QR 51°24'22"N 3°41'26"E
 (22(163), 24(172)22 Den Haag)

37342 4Ed. 07/20/13 LAST NM N31/22 N32/22
 Add Dangerous wreck [K28] 47°46'53"N 3°43'35"W
 (17(47)22 Brest)

37360 16Ed. 02/22/14 LAST NM N31/22 N32/22
 Add Dangerous wreck [K28] 47°46.9'N 3°43.6'W
 (17(47)22 Brest)

43122 4Ed. 03/25/17 LAST NM N13/22 N32/22
 Delete Light 69°29'58"N 17°29'50"E
 Light 69°29'47"N 17°29'47"E
 (13(68293)22 Stavanger)

43127 6Ed. 04/08/17 LAST NM N34/21 N32/22
 Delete Light 69°29'58"N 17°29'50"E
 Light 69°29'47"N 17°29'47"E
 (13(68293)22 Stavanger)

43220 3Ed. 08/23/97 LAST NM 09/22 32/22
 Change Light to Oc(3) WRG 12s 15m 7-6M 64°36.5'N 10°51.7'E
 Light to Oc WRG 64°30.5'N 10°49.4'E
 Light to Oc(2) WRG 7-6M with sectors green 062°-086°, white-096.5°, red-125.5° 64°34.4'N 10°48.2'E
 (12(68067, 68068), 13(68211)22 Stavanger; NOR LL)

43221 4Ed. 12/20/97 LAST NM 22/22 32/22
 Change Range of light to 4-3M 65°00'14"N 10°52'33"E
 (13(68112)22 Stavanger; NOR LL)

43224 3Ed. 03/14/98 LAST NM 11/22 32/22
 Change Light to Oc(3) WRG 12s 15m 7-6M with sectors green 356.5°-004.5°, white-012.5°, red-106°, green-109.5°, white-166°, red-172.5°, green-220.5°, white-236.5°, red-241° 64°36'30"N 10°51'36"E
 Light to Oc WRG 6s 11m 4-3M with sectors red 077°-089.5°, green-098°, white-109.5°, red-250°, green-251°, white-262°, red-264.5° 64°30'36"N 10°49'20"E
 Light to Iso WRG 6s 9m 4-3M with sectors green 074.5°-086°, white-089°, red-090.5°, green-165.5°, white-180.5°, red-186° 64°33'19"N 10°53'16"E
 Light to Oc(2) WRG 8s 21m 7-6M with sectors green-062°-086°, white-096.5°, red-125.5° 64°34'28"N 10°48'03"E
 Light to Oc(2) WRG 8s 5m 4-3M with sectors green-242.5°-251°, white-258.5°, red-353°, green-013.0°, white-015.5°, red-041°, green-079°, white-080.5°, red-094°, green-115° 64°35'18"N 10°54'05"E
 (12(68067, 68068, 68092, 68211, 68219)22 Stavanger; NOR LL)

43303 5Ed. 06/14/14 LAST NM N25/22 N32/22
 Change Light to Oc(2) WRG 6s 6m 8-7M with sectors green 243°-245°, white-248°, red-318°, green-008°, white-013°, red-110.5°, green-118.5°, white-120.5°, red-151.5° 60°23'16"N 5°10'21"E
 (13(68125)22 Stavanger; NOR LL)

43321 7Ed. 11/12/11 LAST NM N28/22 N32/22
 Substitute Depth 10.5 meters Rk [K14.2] for depth 24 meters 60°13.30'N 5°17.76'E
 Change Light to Iso WRG 2s 10m 5M with sectors green 359°-359.5°, white-005.5°, red-013.5°, green-174.5°, white-177.5°, red-182°, green-187°, white-194°, red-196° 60°08.74'N 5°11.37'E
 Light to "Kassholmboen" Iso WRG 2s 6m 4M with sectors red 194°-209.5°, green-350°, white-351.5°, red-013.5°, green-037°, white-043°, red-053.5° 60°07.72'N 5°05.66'E
 Light to "Ystaskjer" Iso WRG 16s 12m 7-6M with sectors green 222°-240°, white-273°, red-279.5°, green-306°, red-003°, green-046.5°, white-061°, red-074.5° 60°10.25'N 5°06.67'E
 Light to "Hjekteskjer" Oc(2) WRG 6s 6m 8-7M with sectors green 243°-245°, white-248°, red-318°, green-008°, white-013°, red-110.5°, green-118.5°, white-120.5°, red-151.5° 60°23.26'N 5°10.34'E
 (12(67970, 68024, 68025, 68029), 13(68125)22 Stavanger; NOR LL)

43363 6Ed. 06/14/14 LAST NM N25/22 N32/22
 Delete Buoy 58°07'00"N 8°13'57"E
 Add Beacon 58°07'01"N 8°13'49"E
 (12(67966)22 Stavanger)

SECTION I

NM 32/22

43375	7Ed. 08/22/92	LAST NM 31/22	32/22	
Add	Buoy Y, spar, Fl Y 3s [Q130.6]	58°36'53"N 10°33'28"E		
	Buoy Y, spar, Fl Y 3s [Q130.6]	58°37'50"N 10°29'03"E		
	Buoy Y, spar, Fl Y 3s [Q130.6]	58°44'32"N 10°34'52"E		
	Buoy Y, spar, Fl Y 3s [Q130.6]	58°42'09"N 10°32'16"E		
	Buoy Y, spar, Fl Y 3s [Q130.6]	58°35'35"N 10°36'41"E		
	(915(16729)22 Norrköping)			
44015	10Ed. 04/11/15	LAST NM 30/22	32/22	
Add	Foul ground symbol [K31.1]	57°05.4'N 23°53.8'E		
	(2(17)22 Riga)			
44036	5Ed. 08/31/96	LAST NM 30/22	32/22	
Delete	Dashed line joining	57°33'25"N 11°35'09"E		
		57°33'25"N 11°35'39"E		
		57°33'47"N 11°35'40"E		
Add	Buoy Y, spar, Fl Y 3s [Q130.6]	57°54'41"N 10°57'02"E		
	Buoy Y, spar, Fl Y 3s [Q130.6]	57°53'05"N 11°02'52"E		
	Dashed line (anchorage area limit) [N12.1]			
	between	57°33'25"N 11°35'09"E		
		57°33'47"N 11°35'40"E		
	Anchoring, fishing, and diving prohibited area [N2.1] bound by purple composite line joining			
		57°33'05"N 11°34'41"E		
		57°34'31"N 11°36'40"E		
		57°34'04"N 11°37'48"E		
		57°32'38"N 11°35'49"E		
	(916(16868), 917(16870)22 Norrköping)			
44041	9Ed. 01/16/21	LAST NM N27/22	N32/22	
Delete	Purple dashed line joining	57°33'22"N 11°35'05"E		
		57°33'22"N 11°35'45"E		
		57°33'51"N 11°35'45"E		
Add	Purple dashed line (anchorage area limit) [N12.1] between	57°33'22"N 11°35'05"E		
		57°33'51"N 11°35'45"E		
	Anchoring, fishing, and diving prohibited area [N2.1] bound by purple composite line joining			
		57°33'05"N 11°34'41"E		
		57°34'31"N 11°36'40"E		
		57°34'04"N 11°37'48"E		
		57°32'38"N 11°35'49"E		
	(917(16870)22 Norrköping)			
44042	9Ed. 01/16/21	LAST NM N29/22	N32/22	
Delete	Purple dashed line joining	57°33'22.4"N 11°35'05.3"E		
		57°33'22.4"N 11°35'44.3"E		
		57°33'50.8"N 11°35'44.7"E		
Add	Purple dashed line (anchorage area limit) [N12.1] between	57°33'22.4"N 11°35'05.3"E		
		57°33'50.8"N 11°35'44.7"E		
	Anchoring, fishing, and diving prohibited area [N2.1] bound by purple composite line joining			
		57°33'12.6"N 11°34'51.7"E		
		57°34'31.1"N 11°36'40.4"E		
		57°34'04.1"N 11°37'47.9"E		
		57°33'12.6"N 11°36'36.5"E		
	Note: Area extends beyond chart border			
	(917(16870)22 Norrköping)			
44044	7Ed. 03/26/16	LAST NM N04/22	N32/22	
	(Plan)			
Delete	Dolphin "H"	57°06'57.3"N 12°14'15.1"E		
Substitute	Buoy Y, pillar, Fl Y 3s [Q130.6] for dolphin "I"	57°07'01.6"N 12°14'17.8"E		
	Buoy Y, pillar, Fl Y 3s [Q130.6] for dolphin "G"	57°06'57.8"N 12°14'11.0"E		
	Buoy Y, pillar, Fl Y 3s [Q130.6] for dolphin "F"	57°06'56.9"N 12°14'06.6"E		
	Buoy Y, pillar, Fl Y 3s [Q130.6] for dolphin "E"	57°06'55.9"N 12°14'01.3"E		
Add	Buoy Y, pillar, Fl Y 3s [Q130.6]	57°06'56.9"N 12°14'14.9"E		
	(918(16903)22 Norrköping)			
44049	11Ed. 05/18/13	LAST NM N22/22	N32/22	
Relocate	Buoy from 55°40'02"N 12°40'34"E to	55°40'08"N 12°40'21"E		
Substitute	Foul ground symbol [K31.1] for depth 12.1 meters	55°18'55"N 12°52'32"E		
Add	Foul ground symbol [K31.1]	55°14'45"N 12°57'44"E		
	Buoy Y, pillar, "X" topmark, Fl Y 3s [Q130.6]	55°40'15"N 12°40'39"E		
	(27(519)22 Norresundby; 917(16753)22 Norrköping)			
44050	25Ed. 05/04/19	LAST NM N22/22	N32/22	
Relocate	Buoy from 55°40'02.3"N 12°40'34.3"E to	55°40'07.7"N 12°40'21.3"E		
Add	Buoy Y, pillar, "X" topmark, Fl Y 3s [Q130.6]	55°40'14.6"N 12°40'38.9"E		
	(27(519)22 Norresundby)			
44064	20Ed. 10/30/10	LAST NM N26/22	N32/22	
Delete	Buoy	55°31.7'N 11°04.1'E		
Add	Foul ground area [K31.2] bound by dashed line joining	55°32.0'N 11°04.0'E		
		55°31.1'N 11°04.0'E		
		55°31.6'N 11°03.3'E		
	(24(252)22 Norresundby)			
44100	9Ed. 03/29/14	LAST NM N31/22	N32/22	
Add	Foul ground symbol [K31.1]	55°14.7'N 12°57.7'E		
	(917(16753)22 Norrköping)			
44178	3Ed. 07/18/15	LAST NM N29/22	N32/22	
	(Panel A)			
Substitute	Buoy YB, spar, double cone topmark points downward [Q130.3] for buoy	58°47'45"N 17°53'04"E		
	(918(16891)22 Norrköping)			
44400	6Ed. 01/30/16	LAST NM N29/22	N32/22	
Delete	Buoy "J"	57°01.4'N 23°55.2'E		
	Buoy ODAS	57°01.2'N 23°54.8'E		
Add	Depth 21 meters Obstn [K41]	57°06.1'N 23°57.4'E		
	Foul ground symbol [K31.1]	57°05.4'N 23°53.8'E		
	(2(17), 7(130-132)22 Riga)			
44401	10Ed. 07/30/16	LAST NM N29/22	N32/22	
Add	Depth 21 meters Obstn [K41]	57°06'04.8"N 23°57'25.2"E		
	(7(130)22 Riga)			
44442	2Ed. 06/07/14	LAST NM N49/21	N32/22	
Add	Pilot station symbol "B" [T1.2]	56°34'48.0"N 20°56'00.0"E		
	(7(137)22 Riga)			
44443	1Ed. 08/01/09	LAST NM N29/22	N32/22	
Add	Designation "6K" to buoy	56°32'30.6"N 21°01'49.2"E		
	Designation "4K" to buoy	56°32'41.0"N 21°00'52.8"E		
	Pilot station symbol "C" [T1.2]	56°32'24.0"N 20°58'36.0"E		
	(See N12/21)			
	(7(138, 140, 141)22 Riga)			
51013	5Ed. 03/16/19	LAST NM 51/21	32/22	
Delete	Light	33°36.0'N 7°37.0'W		
	(27(150)22 Brest)			
51220	8Ed. 09/26/98	LAST NM 51/21	32/22	
Delete	Buoy "CA"	33°40.1'N 7°34.6'W		
	Light and sector limit	33°36.2'N 7°36.6'W		
Change	Buoy "MH" to "M" RW, pillar, ball topmark, Fl W 10s AIS	33°46.4'N 7°23.0'W		
Add	Buoy "CA1" G, pillar, cone topmark, Fl G 4s AIS	33°39.5'N 7°34.6'W		
	(27(150)22 Brest)			

51222 7Ed. 07/16/16 LAST NM N16/20 N32/22
 Delete Buoy "CA3" 33°37'24.0"N 7°35'00.0"W
 Light and sector limits 33°36'13.8"N 7°36'36.5"W
 Light 33°36'46.0"N 7°36'19.5"W
 Light 33°37'04.9"N 7°35'36.6"W
 Delete Light 33°36'39.8"N 7°36'15.5"W
 (See N20/19)
 Add Light Fl(3) G 10s 10m 7M AIS 33°37'13.8"N 7°35'29.3"W
 Buoy BYB, pillar, double cone topmark bases
 together, VQ(3) W 5s AIS [Q130.3]
 33°37'21.0"N 7°35'12.0"W
 Buoy "CA1" G, pillar, cone topmark,
 Fl G 4s AIS 33°39'28.8"N 7°34'36.4"W
 (27(150)22 Brest)

51223 3Ed. 10/20/12 LAST NM N51/21 N32/22
 Delete Buoy "CA3" 33°37'24"N 7°35'00"W
 Buoy "CA" 33°40'09"N 7°34'33"W
 Buoy "MHa" 33°44'18"N 7°22'01"W
 Buoy "MHb" 33°44'00"N 7°22'18"W
 Depth 35 meters 33°45'21"N 7°21'57"W
 Light and sector limits 33°36'14"N 7°36'37"W
 Light 33°36'46"N 7°36'19"W
 Light 33°37'04"N 7°35'37"W
 Light 33°36'39"N 7°36'16"W
 (See N20/19)
 Change Buoy "MHe" to "M6" Y, pillar, "X" topmark,
 Fl(3) Y 8s AIS 33°43'40"N 7°22'37"W
 Buoy "MH" to "M" RW, pillar, ball topmark,
 Fl W 10s AIS 33°46'24"N 7°23'01"W
 Add Light Fl(3) G 10s 10m 7M AIS 33°37'14"N 7°35'29"W
 Buoy BYB, pillar, double cone topmark bases
 together, VQ(3) W 5s [Q130.3] AIS 33°37'21"N 7°35'12"W
 Buoy "CA1" G, pillar, cone topmark,
 Fl G 4s AIS 33°39'29"N 7°34'36"W
 Buoy "CA" RW, pillar, ball topmark, Iso W 4s
 Racon(O) AIS [Q130.5] 33°41'04"N 7°33'59"W
 Buoy "M4" Y, pillar, "X" topmark, Fl(2) Y 6s
 AIS [Q130.6] 33°44'08"N 7°22'12"W
 Buoy "M2" Y, pillar, "X" topmark, Fl Y 4s AIS
 [Q130.6] 33°44'33"N 7°21'50"W
 Buoy "TP1" G, pillar, cone topmark, Fl G 4s
 AIS 33°45'37"N 7°22'52"W
 Buoy "TP3" G, pillar, cone topmark, Fl(2) G 6s
 AIS 33°45'01"N 7°22'16"W
 Depth 25 meters enclosed by depth contour
 (30-meter) centered 33°45'23"N 7°22'01"W
 (27(150)22 Brest; FRA CH 7705)

53061 12Ed. 07/10/21 LAST NM N23/22 N32/22
 Delete Purple dashed line (seaplane operating area
 limit) between 43°20'07"N 4°51'39"E
 43°20'34"N 5°01'05"E
 Add Seaplane operating area [N13] bound by purple
 dashed line joining 43°21'10"N 5°01'23"E
 43°21'27"N 5°01'01"E
 43°21'42"N 5°00'36"E
 43°21'48"N 5°00'09"E
 43°21'48"N 4°59'39"E
 43°21'35"N 4°59'10"E
 43°21'14"N 4°58'53"E
 43°20'49"N 4°58'52"E
 43°20'25"N 4°58'58"E
 43°20'01"N 4°59'14"E
 43°19'44"N 4°59'38"E
 43°19'30"N 5°00'06"E
 43°19'24"N 5°00'32"E
 43°19'24"N 5°00'54"E
 43°19'36"N 5°01'24"E
 43°19'58"N 5°01'41"E
 43°20'10"N 5°01'44"E
 Legend "Seaplane Landing Area SEE NOTE"
 43°20'52"N 4°59'44"E
 Seaplane operating area [N13] bound by purple
 dashed line joining 43°21'59"N 4°54'10"E
 43°21'59"N 4°56'04"E
 43°22'28"N 4°57'08"E
 43°22'53"N 4°57'49"E
 43°23'46"N 4°58'58"E
 (27(86)22 Brest)

53084 7Ed. 05/11/13 LAST NM N16/22 N32/22
 Delete Purple dashed line (seaplane operating area
 limit) between 43°42'44"N 7°26'02"E
 43°43'38"N 7°27'19"E
 Add Purple dashed line (seaplane operating area
 limit) [N13] between 43°42'44"N 7°26'02"E
 43°43'38"N 7°28'00"E
 (27(86)22 Brest)

53086 9Ed. 01/25/14 LAST NM N27/22 N32/22
 Delete Purple dashed line (seaplane operating area
 limit) between 43°42'44"N 7°26'02"E
 43°44'57"N 7°29'12"E
 Add Purple dashed line (seaplane operating area
 limit) [N13] joining 43°42'44"N 7°26'02"E
 43°45'00"N 7°31'01"E
 43°46'30"N 7°30'33"E
 (27(86)22 Brest)

53093 4Ed. 09/28/13 LAST NM N27/22 N32/22
 Delete Purple dashed line (seaplane operating area
 limit) between 43°42'43.8"N 7°26'01.8"E
 43°43'15.1"N 7°26'46.6"E
 Add Purple dashed line (seaplane operating area
 limit) [N13] between 43°42'43.8"N 7°26'01.8"E
 43°43'04.3"N 7°26'46.6"E
 (27(86)22 Brest)

53201 7Ed. 05/19/12 LAST NM N31/22 N32/22
 Delete Depth 15.7 meters 37°13'02.2"N 15°14'10.3"E
 Depth 16.2 meters 37°14'34.9"N 15°15'45.9"E
 Depth 7.8 meters 37°14'04.9"N 15°13'48.2"E
 Depth 7 meters 37°14'07.6"N 15°14'13.1"E
 Substitute Depth 6.4 meters for depth 8.3 meters
 37°13'40.7"N 15°13'43.6"E
 Add Depth 12.4 meters 37°13'03.0"N 15°14'10.2"E
 Depth 14.9 meters 37°14'36.0"N 15°15'43.7"E
 Depth 6.9 meters 37°14'04.4"N 15°13'47.2"E
 Depth 5.7 meters 37°14'08.1"N 15°14'10.7"E
 (ITA CH 271)

53244 3Ed. 10/03/15 LAST NM N29/22 N32/22
 Substitute Depth 39 meters for depth 42 meters
 38°07'57.2"N 13°22'41.8"E
 (13(5)22 Genova)

53313 1Ed. 01/12/13 LAST NM N26/22 N32/22
 Add Seaplane operating area symbol [N13] with
 legend "NOTE NO 2" 42°35'37.2"N 8°44'36.6"E
 (27(93)22 Brest)

54095 3Ed. 09/14/02 LAST NM 31/22 32/22
 Add Buoy Y, pillar, "X" topmark, Fl Y 3 AIS with
 legend "ODAS" [Q58] 43°08.8'N 16°06.7'E
 (6(6)22 Split)

54105 3Ed. 08/31/02 LAST NM 31/22 32/22
 Delete Wreck (PA) 43°14.9'N 14°09.9'E
 Add Buoy Y, pillar, "X" topmark, Fl Y 3 AIS with
 legend "ODAS" [Q58] 43°08.8'N 16°06.7'E
 (1(13)22 Genova; 6(6)22 Split)

54115 3Ed. 08/31/02 LAST NM 31/22 32/22
 Delete Wreck (PA) 43°14.9'N 14°09.9'E
 Add Wreck [K29] enclosed by purple composite-
 line circle with legend "Historic Wk (see
 Note)" centered 44°14.8'N 14°26.0'E
 Note "HISTORIC WRECKS
 The sites of historic wrecks are protected from
 unauthorized interference." 42°53.9'N 13°00.3'E
 Depth 25 meters 44°11.2'N 15°08.3'E
 Buoy Y, pillar, "X" topmark, Fl Y 3 AIS with
 legend "ODAS" [Q58] 43°08.8'N 16°06.7'E
 (1(13)22 Genova; 6(1, 2, 6)22 Split; UKHO ARCS 515-0)

SECTION I

NM 32/22

54120	5Ed. 09/19/92 LAST NM 17/22	32/22	
	Delete Wreck (PA)	43°14'55"N 14°09'57"E	
	Add Depth 70 meters Foul [K31.1] (1(13)22 Genova)	43°15'00"N 14°09'54"E	
54125	4Ed. 09/03/05 LAST NM 30/22	32/22	
	Add Wreck [K29] enclosed by purple composite- line circle with legend "Historic Wk (see Note)" centered	44°14.8'N 14°26.0'E	
	(6(1)22 Split; UKHO ARCS 515-0)		
54131	3Ed. 10/10/15 LAST NM 31/22	32/22	
	Delete Wreck (PA)	43°14.8'N 14°09.6'E	
	Add Wreck [K29]	44°14.8'N 14°26.0'E	
	(1(13)22 Genova; 6(1)22 Split; UKHO ARCS 515-0)		
54180	7Ed. 01/21/06 LAST NM 30/22	32/22	
	Add Wreck [K29] enclosed by purple composite- line circle with legend "Historic Wk (see Note)" centered	44°14'47"N 14°26'01"E	
	Note		
	"HISTORIC WRECKS The sites of historic wrecks are protected from unauthorized interference."	45°15'06"N 14°00'45"E	
	Depth 25 meters	44°11'11"N 15°08'16"E	
	(6(1, 2)22 Split; UKHO ARCS 515-0)		
54200	4Ed. 09/11/93 LAST NM 31/22	32/22	
	Add Buoy Y, pillar, "X" topmark, Fl Y 3 AIS with legend "ODAS" [Q58]	43°08.8'N 16°06.7'E	
	(6(6)22 Split)		
54227	3Ed. 12/20/08 LAST NM N23/22	N32/22	
	Delete Buoy	43°02'38.0"N 17°25'22.2"E	
	(See N09/22)		
	(6(7)22 Split)		
54402	4Ed. 06/29/96 LAST NM 24/20	32/22	
	(Panel B)		
	Add Solid line (pier) [F14] between	37°38'13"N 26°10'13"E 37°38'13"N 26°10'32"E	
	Light Fl G 3s 11m 3M	37°38'13"N 26°10'31"E	
	(25(2665)22 Taunton; UKHO ARCS 1526-1)		
55040	4Ed. 07/31/99 LAST NM 13/22	32/22	
	Add Submarine power cable [L31.1] between	40°53.1'N 29°03.7'E 40°55.3'N 29°07.9'E	
	(19(71)22 Istanbul)		
55046	5Ed. 08/04/12 LAST NM N31/22	N32/22	
	Add Submarine power cable [L31.1] joining	40°53'07"N 29°03'40"E 40°53'15"N 29°03'53"E 40°54'00"N 29°05'23"E 40°55'05"N 29°07'20"E 40°55'09"N 29°07'39"E	
	Submarine power cable [L31.1] joining	40°52'53"N 29°05'58"E 40°53'50"N 29°07'04"E 40°54'25"N 29°08'09"E 40°54'23"N 29°08'19"E	
	Submarine power cable [L31.1] joining	40°52'21"N 29°06'04"E 40°52'13"N 29°06'20"E 40°52'05"N 29°06'42"E 40°52'07"N 29°06'55"E	
	(19(71)22 Istanbul)		
62105	4Ed. 03/14/09 LAST NM N32/16	N32/22	
	Substitute Depth 51 meters Wk [K26] for depth 51 meters	12°37'39.8"N 43°24'00.0"E	
	Add Depth 54 meters Wk [K26]	12°37'44.2"N 43°24'07.8"E	
	Depth 48 meters Wk [K26]	12°37'35.5"N 43°24'29.9"E	
	(UKHO ARCS 452-1)		
62425	1Ed. 12/27/14 LAST NM N27/22	N32/22	
	Change Characteristic of buoy "K4" to Fl(4) Y 2s	26°11'32.9"N 50°41'56.0"E	
	(29(3064)22 Taunton)		
62453	7Ed. 12/27/14 LAST NM N27/22	N32/22	
	Change Characteristic of buoy "K4" to Fl(4) Y 2s	26°11'32.8"N 50°41'55.9"E	
	(29(3064)22 Taunton)		
63015	11Ed. 02/04/84 LAST NM 31/22	32/22	
	Add Submarine cable [L30.1] between	13°01.4'N 80°16.8'E 12°57.8'N 80°37.9'E	
	Submarine cable [L30.1] joining	13°01.2'N 80°16.7'E 12°50.3'N 80°36.5'E 12°49.5'N 80°40.1'E	
	(13(137)22 Dehra Dun)		
63270	8Ed. 04/08/17 LAST NM N41/19	N32/22	
	Add Submarine cable [L30.1] joining	12°59.6'N 80°23.9'E 12°59.0'N 80°27.2'E 12°59.2'N 80°28.8'E 12°58.5'N 80°32.2'E 12°57.8'N 80°37.9'E	
	Submarine cable [L30.1] joining	13°01.2'N 80°16.7'E 12°50.3'N 80°36.5'E 12°49.5'N 80°40.1'E	
	(13(137)22 Dehra Dun)		
63271	10Ed. 09/15/18 LAST NM N30/22	N32/22	
	Add Submarine cable [L30.1] between	13°01'15"N 80°16'43"E 12°59'24"N 80°20'03"E	
	(13(137)22 Dehra Dun)		
71033	31Ed. 02/03/96 LAST NM 31/22	32/22	
	Add Danger circle "Obstn" [K40]	0°04.5'N 108°15.0'E	
	(45(5642)16 Taunton)		
71470	2Ed. 03/22/97 LAST NM 27/20	32/22	
	(Panel A)		
	Add Danger circle "Obstn" [K40]	0°04.5'N 108°15.0'E	
	(45(5642)16 Taunton)		
72000	8Ed. 08/05/95 LAST NM 09/21	32/22	
	Delete Dangerous wreck	6°25.2'S 112°51.5'E	
	Dangerous wreck "Rep (1989)" (PA)	6°28.9'S 113°02.6'E	
	(36(479)19 Jakarta; 41(5186)19 Taunton)		
72021	8Ed. 11/30/96 LAST NM 16/22	32/22	
	Delete Dangerous wreck	6°25.1'S 112°51.4'E	
	Dangerous wreck "Rep (1989)" (PA)	6°28.7'S 113°02.3'E	
	(36(479)19 Jakarta; 41(5186)19 Taunton)		
72035	8Ed. 09/26/98 LAST NM 16/22	32/22	
	Delete Dangerous wreck	6°24.7'S 112°51.2'E	
	Dangerous wreck "Rep (1989)" (PA)	6°28.7'S 113°02.8'E	
	(36(479)19 Jakarta; 41(5186)19 Taunton)		
75130	16Ed. 08/26/95 LAST NM 25/22	32/22	
	Add Depth 12.6 meters	35°07.3'S 138°27.5'E	
	(AUS CH 781)		
75134	3Ed. 11/18/95 LAST NM 25/22	32/22	
	(Plan A)		
	Delete Depth 8.5 meters	35°00'44"S 138°29'29"E	
	Depth 27.5 meters	35°04'25"S 138°24'14"E	
	Depth 23.7 meters Wk	35°06'52"S 138°24'43"E	
	Depth 15.2 meters	35°07'13"S 138°27'24"E	
	(See 45/03)		
	Add Depth 7.2 meters	35°00'52"S 138°29'40"E	
	Depth 25.9 meters	35°04'11"S 138°24'27"E	
	Depth 12.6 meters	35°07'19"S 138°27'28"E	
	Buoy Y, can, "X" topmark, Fl Y 5s [Q130.6]	35°08'10"S 138°27'57"E	
	(AUS CH 781)		

76020 8Ed. 05/28/16 LAST NM 41/16 32/22
 Add Wreck [K29] 34°38.3'S 172°32.5'E
 (NZL CH 41)

76050 8Ed. 08/10/96 LAST NM 31/19 32/22
 Add Depth 10 meters Wk [K26] 36°49.7'S 174°55.2'E
 (13(122)17 Wellington)

76070 9Ed. 06/22/96 LAST NM 39/19 32/22
 Delete Lights (2) in vicinity 39°57.1'S 174°58.9'E
 Add Depth 32 meters Well [L21.2] 39°50.4'S 174°06.4'E
 (1(20), 14(154)16 Wellington; NZL CH 45)

76080 8Ed. 02/22/97 LAST NM 52/15 32/22
 Delete Light 40°49.2'S 172°49.1'E
 Light 40°49.6'S 172°48.5'E
 Light 40°40.4'S 172°41.1'E
 (16(173)16 Wellington)

76160 4Ed. 03/21/98 LAST NM 49/17 32/22
 Delete Depth 47 meters 39°02'59"S 178°03'48"E
 Add Depth 30 meters 39°03'19"S 178°03'41"E
 (26(258)16 Wellington)

83052 3Ed. 06/24/78 LAST NM 25/22 32/22
 Add Beacon R, can topmark 3°02'34"N 172°47'23"E
 Beacon "No 5" G, cone topmark 3°02'55"N 172°48'06"E
 Beacon "No 3" G, cone topmark 3°03'44"N 172°46'13"E
 (38(4754)19 Taunton)

91008 2Ed. 02/15/14 LAST NM N24/22 N32/22
 Add Dangerous wreck [K28] 24°29.6'N 118°30.5'E
 (73/18 Tso-ying)

93710 4Ed. 04/27/13 LAST NM N26/22 N32/22
 Add Depth 6.9 meters, blue tint, and enclosing depth
 contour (10-meter) centered 21°03.4'N 110°35.7'E
 (28(2942)22 Taunton)

93778 10Ed. 11/27/21 LAST NM N29/22 N32/22
 (Panel A)
 Substitute Depth 12.9 meters for depth 13.9 meters
 21°04'26.4"N 110°32'19.8"E
 (Panel B)
 Delete Depth 12.2 meters 21°03'24"N 110°35'42"E
 Add Depth 12.9 meters 21°04'26"N 110°32'20"E
 Depth 6.9 meters enclosed by depth contour
 (10-meter) centered 21°03'25"N 110°35'39"E
 (28(2942)22 Taunton; CHN CH 15741)

94004 7Ed. 07/23/11 LAST NM 27/22 32/22
 Add Dangerous wreck [K28] 24°29.6'N 118°30.5'E
 (73/18 Tso-ying)

94028 8Ed. 09/26/09 LAST NM 21/22 32/22
 Add Submarine power cable [L31.1] joining
 33°12.1'N 129°38.8'E
 33°07.8'N 129°35.8'E
 33°06.2'N 129°30.2'E
 33°07.5'N 129°18.0'E
 33°15.1'N 129°07.8'E
 (24(268)22 Tokyo)

94060 12Ed. 06/30/07 LAST NM 29/22 32/22
 Add Dangerous wreck [K28] 24°29.6'N 118°30.5'E
 (73/18 Tso-ying)

94203 11Ed. 03/19/16 LAST NM N26/22 N32/22
 Add Buoy G, pillar, cone topmark, Fl G 4s AIS
 30°20'49"N 122°09'09"E
 (21(766)22 Tianjin)

95080 15Ed. 12/08/12 LAST NM N30/22 N32/22
 Change Range of beacon to 11M 34°53.7'N 126°09.1'E
 (27(534)22 Busan)

95082 11Ed. 09/25/21 LAST NM N23/22 N32/22
 Delete Depth 3.9 meters Obstn 35°58'36"N 126°33'59"E
 Beacon "A" 35°53'42"N 126°26'54"E
 Substitute Solid line with land tint (pontoon) [F16] for
 double dashed line joining 35°58'29"N 126°33'52"E
 35°58'31"N 126°33'52"E
 35°58'34"N 126°33'55"E
 Solid line with land tint (pontoon) [F16] for
 double dashed line joining 35°58'29"N 126°33'57"E
 35°58'31"N 126°33'57"E
 35°58'35"N 126°34'02"E
 (17(323), 26(513)22 Busan; 28(2972)22 Taunton)

95083 10Ed. 09/12/20 LAST NM N23/22 N32/22
 Delete Depth 3.2 meters Obstn 35°58'33.3"N 126°33'55.2"E
 Depth 3.9 meters Obstn 35°58'36.7"N 126°33'59.1"E
 (28(2972)22 Taunton)

95084 9Ed. 02/26/22 LAST NM N21/22 N32/22
 Change Range of beacon to 11M 34°53'43"N 126°09'05"E
 (27(534)22 Busan)

95087 5Ed. 05/09/20 LAST NM N14/22 N32/22
 Add Light "A" Fl(4) Y 8s 7m 7M 35°58'45.4"N 126°38'04.6"E
 Light "B" Fl(4) Y 8s 7m 7M 35°58'45.8"N 126°38'11.3"E
 (26(513)22 Busan)

95100 13Ed. 10/20/07 LAST NM 31/22 32/22
 Delete Depth 31 meters 34°13.5'N 126°14.2'E
 Depth 21 meters 34°12.3'N 126°48.1'E
 Depth 33 meters 34°13.3'N 126°48.0'E
 Substitute Depth 25 meters for depth 27 meters 34°14.6'N 126°12.4'E
 Purple dashed line with purple open-outlined
 dashed two-way directional arrows indicating
 flow of traffic [M11] oriented 064°-244° for
 dashed line between 34°18.3'N 127°10.5'E
 34°17.4'N 127°08.3'E
 Purple dashed line with purple open-outlined
 dashed two-way directional arrows indicating
 flow of traffic [M11] oriented 092°-272° for
 dashed line between 34°17.4'N 127°08.3'E
 34°17.6'N 127°00.3'E
 Purple dashed line with purple open-outlined
 dashed two-way directional arrows indicating
 flow of traffic [M11] oriented 075°-255° for
 dashed line between 34°17.6'N 127°00.3'E
 34°16.3'N 126°54.1'E
 Change Range of beacon to 11M 34°53.7'N 126°09.1'E
 Add Depth 4 meters, R [J9.1], blue tint, and
 enclosing depth contour (5-meter) with bottom
 characteristic "R" [J9.1] 34°19.1'N 127°08.1'E
 AIS [S17.1] and position circle [T29] "SS
 (Weather)" to light 34°15.0'N 126°36.7'E
 Double solid line with land tint (bridge) [D22]
 and vertical clearance 30 meters between
 34°20.7'N 126°47.2'E
 34°21.2'N 126°46.7'E
 Radio reporting point symbol [M40.1] with
 direction pointers 000°-180° 34°18.4'N 127°01.6'E
 Radio reporting point symbol [M40.1] with
 direction pointer 260° 34°13.1'N 126°50.6'E
 Radio reporting point symbol [M40.1] with
 direction pointers 090°-270° 34°18.4'N 126°57.3'E
 Radio reporting point symbol [M40.1] with
 direction pointers 120°-300° 34°17.9'N 126°52.7'E
 Light FW 33m 8M 34°20.9'N 126°47.0'E
 Depth 26 meters 34°17.8'N 126°11.4'E
 Depth 25 meters 34°13.1'N 126°48.4'E
 Depth 26.5 meters 34°13.8'N 126°15.6'E
 Depth 28.5 meters 34°13.5'N 126°14.9'E
 Depth 18.3 meters 34°12.6'N 126°47.9'E
 and extend depth contour (20-meter) NE to
 enclose

(continued on next page)

95100	(Continued)			
Add	Fish haven symbol [K46.1] "Fish haven" area with blue tint [K46.1] bound by dotted line (limiting danger line) joining	34°13.0'N 126°23.7'E 34°11.2'N 126°47.7'E 34°12.3'N 126°47.2'E 34°13.3'N 126°47.4'E 34°13.2'N 126°48.5'E 34°11.2'N 126°48.5'E		
	(41(630)09, 9(150)13, 48(888, 889)17, 21(429)19, 19(362)21, 27(534)22 Busan; 50(6233)15, 17(1752)21 Taunton; KOR CH 2408, 2415)			
95101	9Ed. 07/30/11 LAST NM N31/22	N32/22		
Delete	Depth 15.6 meters Depth 1.8 meters Depth 2.4 meters Depth 34 meters Depth 30 meters Depth 27 meters Note: Depth contour (30-meter) remains	34°33'59"N 126°18'40"E 34°30'32"N 126°25'47"E 34°30'07"N 126°25'56"E 34°14'23"N 126°15'19"E 34°13'56"N 126°15'52"E 34°14'44"N 126°12'27"E		
Substitute	Depth 9.7 meters for depth 14.1 meters and extend blue tint and depth contour (10-meter) SE to enclose	34°21'09"N 126°11'19"E		
Add	Depth 14.4 meters Depth 25 meters Depth 26 meters Depth 33 meters Depth 23.5 meters Fish haven [K46.2] Depth 1.1 meters and extend depth contour (2-meter) SW to enclose Depth 1 meter and extend depth contour (2-meter) SW to enclose Depth 26.5 meters Depth 28.5 meters and extend depth contour (30-meter) SW to enclose above depths (2) AIS [S17.1] and position circle [T29] "SS (Weather)" to light Platform (lighted) [L10] Underwater turbine [L24] "Fish trap" area [K45] bound by dashed line joining "Fish haven" area with blue tint [K46.1] bound by dotted line (limiting danger line) joining	34°34'03"N 126°18'37"E 34°14'37"N 126°12'22"E 34°17'45"N 126°11'21"E 34°14'26"N 126°15'37"E 34°14'58"N 126°11'14"E 34°30'33"N 126°25'09"E 34°30'08"N 126°25'28"E 34°13'47"N 126°15'37"E 34°13'30"N 126°14'53"E 34°15'04"N 126°36'48"E 34°33'56"N 126°18'36"E 34°33'57"N 126°18'38"E 34°19'58"N 126°31'06"E 34°19'58"N 126°29'44"E 34°20'04"N 126°29'44"E 34°20'27"N 126°30'22"E 34°20'19"N 126°30'57"E 34°13'15"N 126°24'46"E 34°12'40"N 126°24'46"E 34°12'59"N 126°21'56"E 34°12'59"N 126°22'37"E 34°13'16"N 126°22'37"E		
	(41(630)09, 9(150)13, 45(869)16, 19(378)19, 25(405)20, 13(362), 19(362)21 Busan; 51(6490)19 Taunton; KOR CH 2408, 3112)			
95102	9Ed. 03/12/11 LAST NM N31/22	N32/22		
Delete	Depth 17.5 meters Depth 21 meters Depth 33 meters	34°18'25"N 127°05'09"E 34°12'15"N 126°47'54"E 34°13'01"N 126°47'33"E		
Substitute	Purple dashed line with purple open-outlined dashed two-way directional arrows indicating flow of traffic [M11] oriented 064°-244° for dashed line between Purple dashed line with purple open-outlined dashed two-way directional arrows indicating flow of traffic [M11] oriented 092°-272° for dashed line between	34°18'16"N 127°10'29"E 34°17'23"N 127°08'17"E 34°17'36"N 127°00'16"E		
	(41(630)09, 9(150)13, 36(622), 48(888, 889)17, 42(864)18, 21(429)19, 30(523), 39(728), 46(957)20, 21(396)22 Busan; 17(1752)21 Taunton; KOR CH 2415)			
Substitute	Purple dashed line with purple open-outlined dashed two-way directional arrows indicating flow of traffic [M11] oriented 075°-255° for dashed line between	34°17'36"N 127°00'16"E 34°16'16"N 126°54'05"E		
	Depth 17.6 meters, R [J9.1] for depth 19.6 meters	34°12'24"N 126°47'10"E		
Add	Depth 9.6 meters, R [J9.1], blue tint, and enclosing depth contour (10-meter) centered	34°19'04"N 127°08'02"E		
	Depth 4 meters, R [J9.1], blue tint, and enclosing depth contour (5-meter) centered	34°19'06"N 127°08'08"E 34°12'34"N 126°47'53"E		
	Depth 18.3 meters and extend depth contour (20-meter) NNE to enclose			
	Depth 23 meters and extend depth contour (30-meter) NW to enclose	34°12'53"N 126°47'46"E		
	Depth 27.5 meters Depth 25 meters and extend depth contour (30-meter) SW to enclose above depths (2)	34°17'08"N 126°59'07"E 34°16'54"N 126°59'19"E		
	Depth 14.1 meters Depth 14.3 meters Depth 15.9 meters Depth 17.4 meters	34°18'37"N 127°04'05"E 34°18'30"N 127°05'04"E 34°18'37"N 127°04'51"E 34°12'07"N 126°47'36"E		
	Bottom characteristic "R" [J9.1] Bottom characteristic "R" [J9.1]	34°26'07"N 127°13'15"E 34°25'37"N 127°12'28"E		
	Light FW 33m 8M Buoy BYB, pillar, double cone topmark bases together, Q(3) W 10s [Q130.3] Beacon G, can topmark, Fl G 5s 10m 7M	34°20'54"N 126°46'59"E 34°17'43"N 126°51'55"E 34°25'40"N 126°52'26"E		
	AIS [S17.1] and position circle [T29] "SS (Weather)" to light Double solid line with land tint (bridge) [D22] and vertical clearance 30 meters between	34°15'04"N 126°36'48"E 34°20'43"N 126°47'10"E 34°21'15"N 126°46'39"E		
	Vertical clearance [D22] 20 meters to bridge	34°28'00"N 126°57'46"E		
	Radio reporting point symbol [M40.1] with direction pointers 000°-180° Radio reporting point symbol [M40.1] with direction pointer 260° Radio reporting point symbol [M40.1] with direction pointers 090°-270° Radio reporting point symbol [M40.1] with direction pointers 120°-300° "Fish haven" area with blue tint [K46.1] bound by dotted line (limiting danger line) joining	34°18'24"N 127°01'38"E 34°13'06"N 126°50'36"E 34°18'23"N 126°57'16"E 34°17'54"N 126°52'42"E 34°11'13"N 126°47'41"E 34°12'18"N 126°47'14"E 34°13'15"N 126°47'22"E 34°13'10"N 126°48'29"E 34°11'13"N 126°48'29"E		
	(41(630)09, 9(150)13, 36(622), 48(888, 889)17, 42(864)18, 21(429)19, 30(523), 39(728), 46(957)20, 21(396)22 Busan; 17(1752)21 Taunton; KOR CH 2415)			
95103	10Ed. 05/27/17 LAST NM N29/22	N32/22		
Add	"Fish haven" area with blue tint [K46.1] bound by dotted line (limiting danger line) joining	34°12.0'N 126°48.5'E 34°11.2'N 126°48.5'E 34°11.2'N 126°47.7'E 34°12.0'N 126°47.3'E		
	Note: Area extends beyond chart border (KOR CH 2415)			
95141	9Ed. 06/11/11 LAST NM N31/22	N32/22		
Add	Bottom characteristic "R" [J9.1] Bottom characteristic "R" [J9.1]	34°26'07"N 127°13'15"E 34°25'37"N 127°12'28"E		
	(46(957)20 Busan)			
95144	11Ed. 03/17/18 LAST NM N31/22	N32/22		
Add	Depth 39 meters Fish haven [K46.2]	34°37'32"N 128°23'07"E		
	(KOR CH 2163)			

95161 20Ed. 03/19/22 LAST NM N29/22 N32/22
 Delete Buoy "F" 35°24'21.0"N 129°22'03.2"E
 Buoy "E" 35°24'21.0"N 129°22'29.8"E
 Buoy "B" 35°24'42.8"N 129°22'28.9"E
 (See N24/22)
 Add Light Fl(3) G 7s 19m 11M 35°24'27.9"N 129°22'29.4"E
 (26(509)22 Busan)

97021 8Ed. 02/12/11 LAST NM 09/21 32/22
 Add Submarine power cable [L31.1] joining
 33°12.1'N 129°38.8'E
 33°07.8'N 129°35.8'E
 33°06.2'N 129°30.2'E
 33°07.5'N 129°18.0'E
 33°15.1'N 129°07.8'E
 (24(268)22 Tokyo)

97191 1Ed. 07/01/10 LAST NM N31/22 N32/22
 Delete Position circle "STATUE (139)" 34°30'10"N 134°58'37"E
 (21(212)22 Tokyo)

97198 1Ed. 07/01/10 LAST NM N26/22 N32/22
 Delete Position circle "STATUE (139)" 34°30.2'N 134°58.6'E
 (21(212)22 Tokyo)

97210 (INT 5315) 1Ed. 07/01/10 LAST NM N26/22 N32/22
 Delete Position circle "STATUE (139)" 34°30'10"N 134°58'37"E
 (21(212)22 Tokyo)

97252 2Ed. 12/05/13 LAST NM N26/22 N32/22
 Substitute Depth 2.6 meters for depth 4.3 meters 34°03.7'N 133°07.7'E
 Depth 11.5 meters for depth 12.8 meters
 34°03.7'N 133°07.9'E
 Depth 9.1 meters, blue tint, and enclosing depth
 contour (10-meter) for depth 10.8 meters and
 enclosing depth contour (20-meter) 34°04.0'N 133°08.1'E
 Change Range of light to 8M 34°04.5'N 133°00.4'E
 (46(759)14, 19(193)22 Tokyo)

97266 6Ed. 12/05/09 LAST NM N26/22 N32/22
 Delete Depth 11.7 meters 34°04.2'N 132°54.2'E
 Depth 19.6 meters 34°03.8'N 132°52.0'E
 Depth 36 meters 34°06.4'N 132°52.8'E
 Substitute Depth 2.6 meters for depth 4.3 meters 34°03.7'N 133°07.7'E
 Depth 11.5 meters for depth 12.8 meters
 34°03.7'N 133°07.9'E
 Depth 9.1 meters, blue tint, and enclosing depth
 contour (10-meter) for depth 10.8 meters and
 enclosing depth contour (20-meter) 34°04.0'N 133°08.1'E
 Depth 28 meters for depth 29 meters 34°04.4'N 132°52.3'E
 Depth 13.1 meters for depth 15 meters
 34°04.3'N 132°53.6'E
 Depth 2.5 meters, R [J9.1] for depth 4.4 meters
 34°04.4'N 132°52.7'E
 Depth 0.5 meter for depth 2 meters 34°04.2'N 132°53.3'E
 Note: Bottom characteristic "R" remains
 Change Range of light to 8M 34°04.4'N 133°00.4'E
 Add Light Al Fl WG 12s 7M 34°07.1'N 133°00.1'E
 Depth 31 meters 34°04.1'N 133°07.6'E
 Depth 8.7 meters Fish haven [K46.2] 34°04.0'N 132°52.5'E
 Depth 18.7 meters Fish haven [K46.2]
 34°03.7'N 132°52.2'E
 Depth 29 meters 34°06.1'N 132°52.7'E
 (32(630)12, 43(793)13, 46(759)14, 19(193)22 Tokyo)

97293 2Ed. 06/02/11 LAST NM N30/22 N32/22
 Delete Foul ground symbol 34°03'07"N 132°51'05"E
 Substitute Depth 16.4 meters for depth 14.2 meters
 34°03'10"N 132°51'06"E
 (22(447)19 Tokyo)

97294 1Ed. 07/01/10 LAST NM N29/22 N32/22
 Delete Foul ground symbol 34°03'07.7"N 132°51'05.4"E
 Depth 18.8 meters 34°03'16.6"N 133°01'49.7"E
 Position circle "G Lt" 34°03'23.5"N 133°01'57.3"E
 Substitute Depth 17.2 meters for depth 15.2 meters
 34°03'19.2"N 133°01'39.2"E
 Depth 8.9 meters for depth 10 meters
 34°03'10.3"N 133°01'37.5"E
 Change Rate of ebb tide stream to "3.0 kn"
 34°05'16.3"N 133°00'18.2"E
 Rate of flood tide stream to "3.9 kn"
 34°05'08.2"N 133°00'24.1"E
 Range of light to 8M 34°04'28.0"N 133°00'21.2"E
 Add Position circle "W Lt" 34°02'58.0"N 132°51'08.2"E
 Position circle "Y Lt" 34°04'47.8"N 132°59'57.1"E
 Depth 16.6 meters Foul [K31.1]
 34°03'15.3"N 133°01'45.9"E
 Foul ground symbol [K31.1] 34°03'08.8"N 133°02'00.2"E
 Depth 10.3 meters 34°03'18.7"N 133°02'00.1"E
 and extend depth contour (20-meter) N to
 enclose
 (50(767)16, 22(447)19, 19(193), 22(231)22 Tokyo)

97295 1Ed. 07/01/10 LAST NM N29/22 N32/22
 Add Position circle "Y Lt" 34°04'47.8"N 132°59'57.1"E
 (22(231)22 Tokyo)

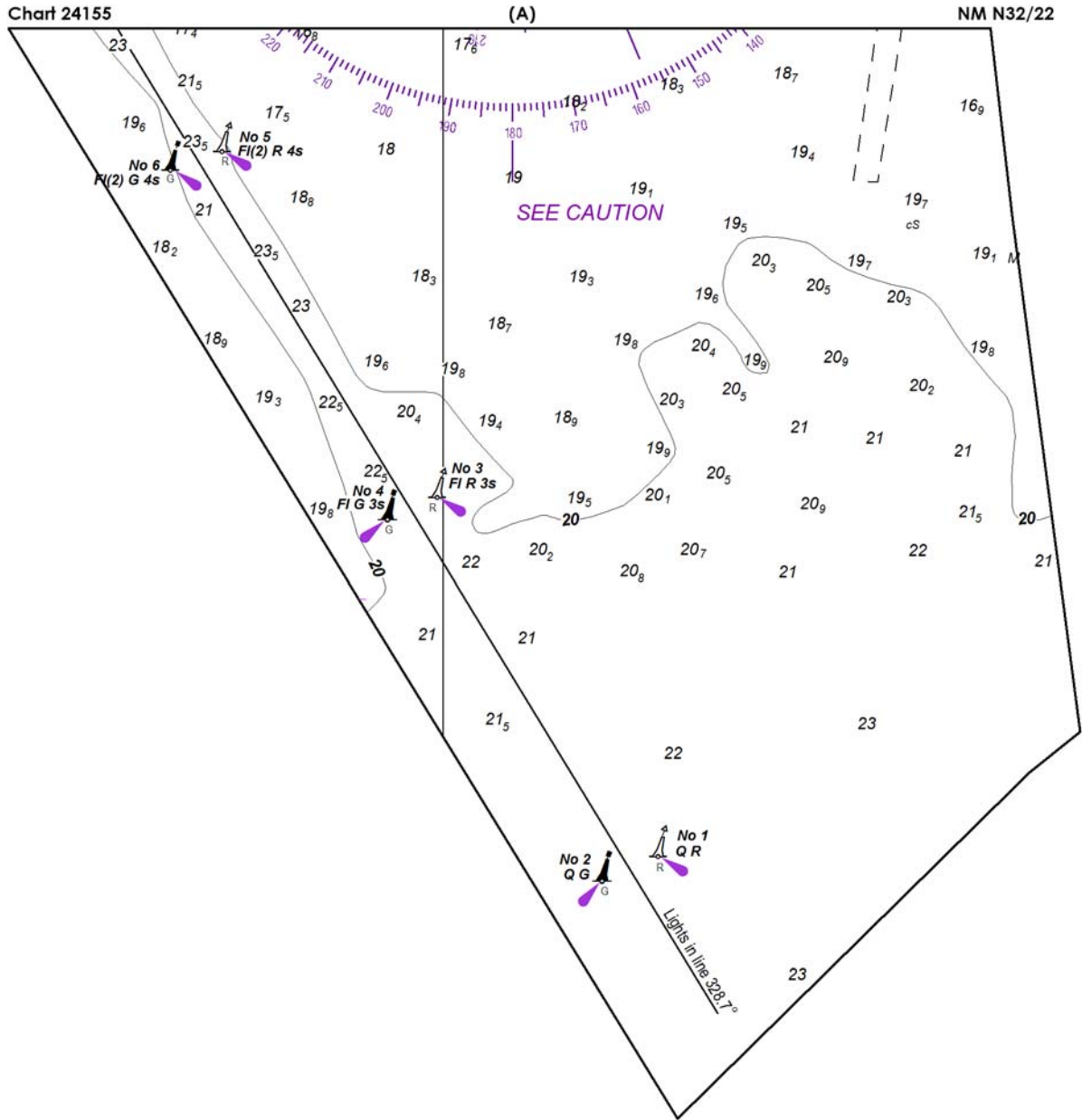
97380 7Ed. 08/23/97 LAST NM 23/22 32/22
 Add Submarine power cable [L31.1] joining
 33°12.1'N 129°38.8'E
 33°07.8'N 129°35.8'E
 33°06.2'N 129°30.2'E
 33°07.5'N 129°18.0'E
 33°10.4'N 129°15.0'E
 33°13.0'N 129°09.7'E
 33°15.1'N 129°07.8'E
 (24(268)22 Tokyo)

97392 6Ed. 03/13/21 LAST NM N14/21 N32/22
 Add Submarine power cable [L31.1] joining
 33°10'24"N 129°15'00"E
 33°13'00"N 129°09'42"E
 33°14'48"N 129°08'42"E
 33°15'06"N 129°07'49"E
 (24(268)22 Tokyo)

97396 15Ed. 05/01/21 LAST NM N23/22 N32/22
 Add Submarine power cable [L31.1] joining
 33°09'16"N 129°37'12"E
 33°07'48"N 129°35'48"E
 33°06'12"N 129°30'12"E
 33°06'48"N 129°28'06"E
 33°06'42"N 129°25'12"E
 33°07'24"N 129°23'30"E
 33°07'30"N 129°18'00"E
 33°10'24"N 129°15'00"E
 33°13'00"N 129°09'42"E
 33°14'48"N 129°08'42"E
 33°15'06"N 129°07'49"E
 (24(268)22 Tokyo)

97397 8Ed. 11/29/08 LAST NM N14/22 N32/22
 Add Submarine power cable [L31.1] joining
 33°09'16.3"N 129°37'11.8"E
 33°07'48.2"N 129°35'47.9"E
 33°06'12.0"N 129°30'12.0"E
 33°06'48.0"N 129°28'06.0"E
 33°06'48.1"N 129°28'00.0"E
 (24(268)22 Tokyo)

★801379 1Ed. 7/9/22 NEW EDITION N32/22
 (NGA)



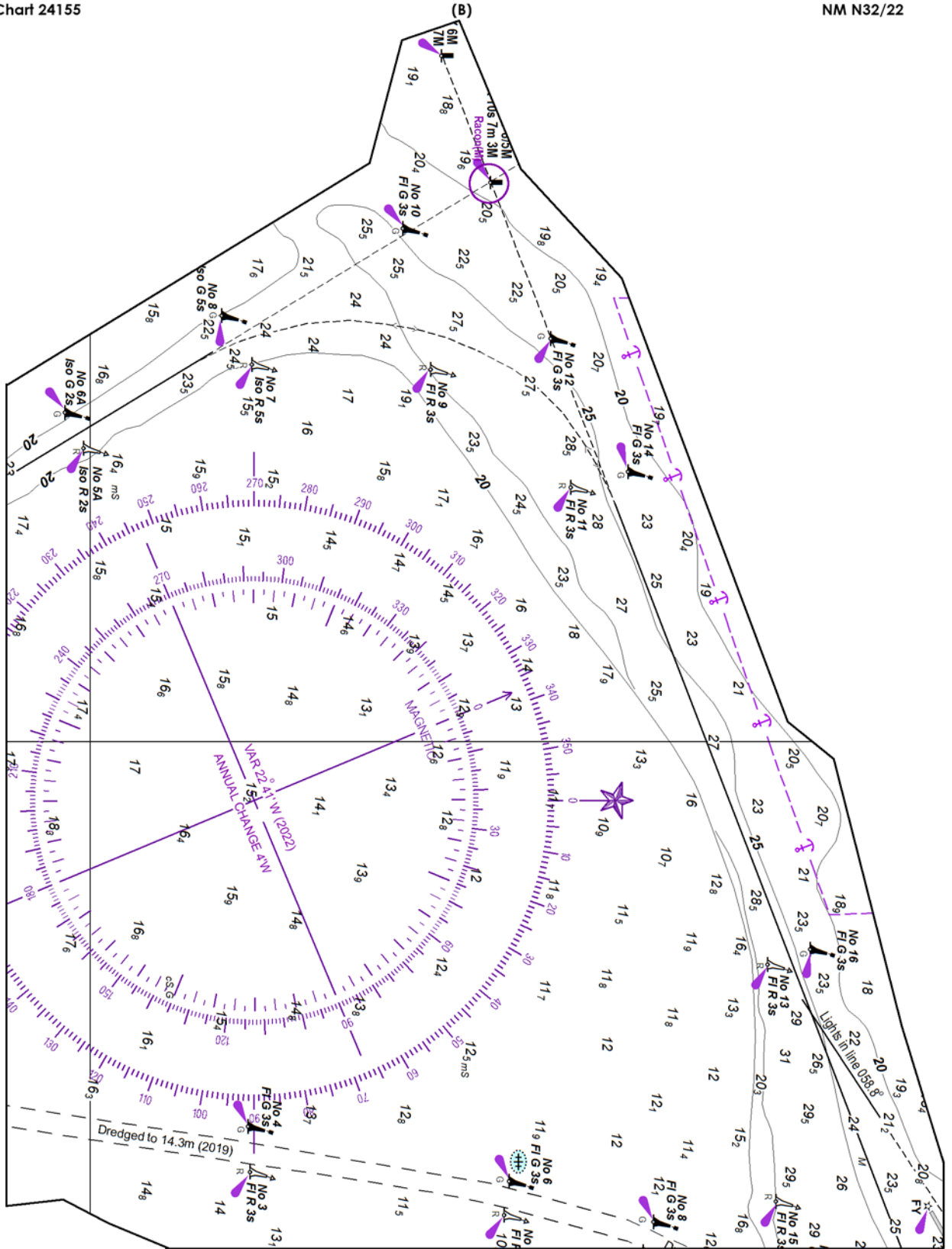
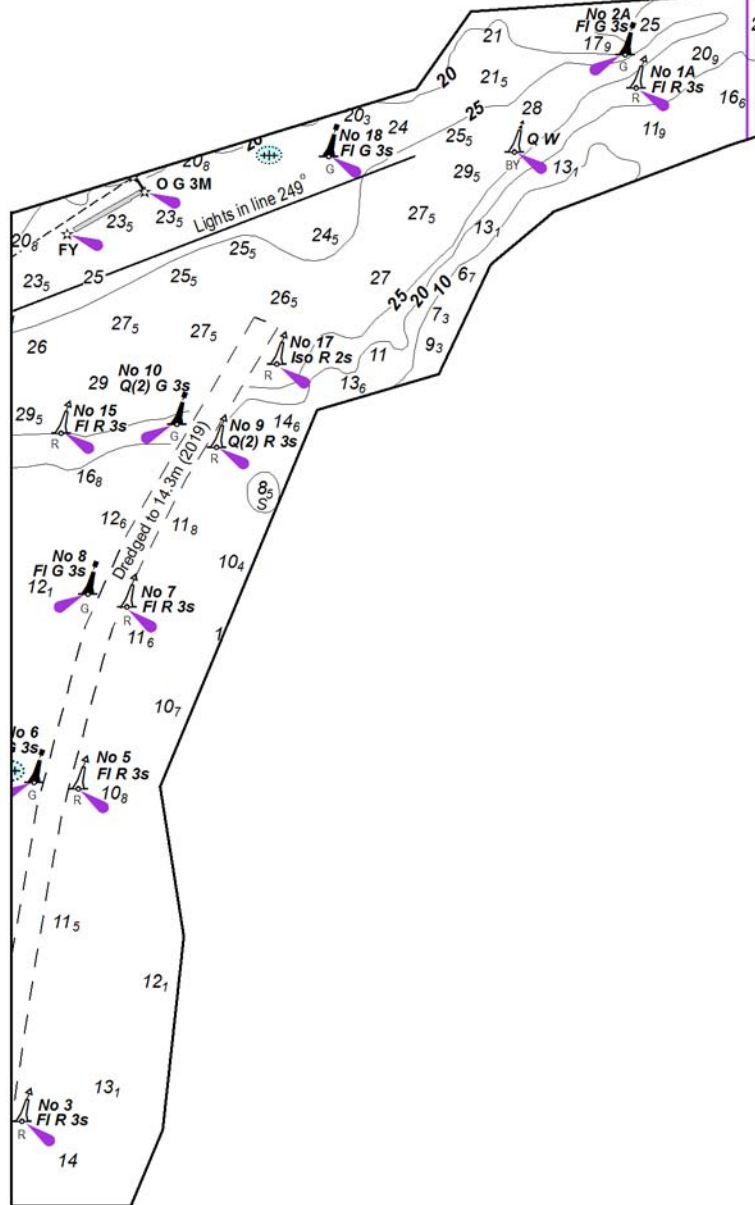


Chart 24155

(C)

NM N32/22



**CHARTS AFFECTED BY NOTICE TO MARINERS
NM 5/22 THROUGH NM 32/22**

Note: N indicates Not For Sale; P indicates Preliminary; T indicates Temporary;
* indicates New Edition/New Chart; ** indicates Chart Canceled

Chart No.	Ed. No.	Notice to Mariners No.	Chart No.	Ed. No.	Notice to Mariners No.	Chart No.	Ed. No.	Notice to Mariners No.	Chart No.	Ed. No.	Notice to Mariners No.
11	2	29/22	11389	36	11,29/22	11543	25	30/22	12401	13	29/22
12	1	29/22	11390	27	9,11,29/22	11544	42	30/22	12402	15	29/22
14	4	29/22	11391	26	9,11,29/22	11545	67	7,10,20,30/22	13000	1	N6,N7,N18/22
71	4	24/22	11401	33	8,21,27,29/22	11547	40	7,10,16,20/22	13003	52	6,7,8,14,16,17,18,28/22
72	4	24/22	11402	24	8,21,27/22	11548	43	7,12/22	13006	36	7,8,16,17,18/22
103	5	22/22	11407	20	29/22	11550	33	12/22	13009	38	5,6,7,18,30/22
104	5	22/22	11408	31	29/22	11552	22	7,12,17/22	13200	40	7,30/22
112	6	19/22	11409	31	29/22	11553	31	7/22	13201	13	N6,N7,N30/22
120	6	29/22	11411	24	5,11,13/22	11554	17	7,12/22	13205	41	23,24/22
125	7	29/22	11412	52	5,11,13,18,19,29/22	11555	43	11,23,26,27,29/22	13209	28	24/22
126	39	29/22	11415	15	5,11,13,31/22	12200	53	7,14,15,20,28,30/22	13214	30	12,17/22
302	1	21,30/22	11416	16	9,18,19,21,29,31,32/22	12201	30	N7,N14,N15,N20,N28, N30/22	13215	21	23/22
411	54	12,31/22	11420	33	12,31/22	12204	39	5,8,23,30/22	13218	44	26,30/22
507	2	12/22	11423	9	N12,N27,N31/22	12205	35	5,8,12,30/22	13221	63	14,20,26/22
508	2	18,32/22	11424	21	27,29/22	12210	46	15,22,29/22	13223	45	20,26/22
509	4	14,18/22	11425	41	11,20,29,31/22	12211	49	15,17,22/22	13224	41	14/22
550	7	18/22	11429	24	29/22	12212	51	11,20,25/22	13228	13	16/22
602	6	13/22	11431	13	29/22	12216	31	5,23,24/22	13229	34	6,7,15,17,21,26,30/22
704	1	24/22	11432	15	29/22	12218	36	23,25,29/22	13230	53	21,26,30/22
705	3	24/22	11433	14	29/22	12221	84	15/22	13233	20	21/22
1113A	33	12,31/22	11434	30	11,12/22	12222	56	17,21,26,28/22	13236	33	21,26/22
1116A	80	14,17,21/22	11435	15	N12/22	12224	28	23/22	13237	44	6,7,13,14,15,17,21/22
1117A	45	5/22	11438	14	29/22	12225	62	25,29/22	13241	18	7,13,14/22
4148	3	12,31/22	11439	29	11,12,29/22	12226	20	23/22	13242	18	7/22
4149	1	12/22	11442	37	20,26/22	12228	36	23,25,29/22	13244	42	7,21,30/22
11004	9	17/22	11445	31	27,29/22	12230	67	15,29/22	13246	40	6,8,14,16/22
11006	34	12/22	11448	15	27,29/22	12231	32	15,23,29/22	13248	12	6/22
11013	48	12,20,25,31/22	11449	17	29/22	12233	39	23/22	13249	13	16/22
11299	1	N5/22	11450	11	21/22	12235	36	23/22	13250	9	8,16/22
11300	45	5/22	11451	36	8,11,21,22,26,29,31/22	12237	29	16/22**	13251	16	16,17/22
11304	14	17/22	11452	23	26,29/22	12238	43	15/22	13253	20	13,14/22
11307	38	5/22	11453	17	26,29/22	12244	15	16/22**	13260	44	5,14,18/22
11308	26	9/22	11460	44	12/22	12245	71	28/22	13263	10	N5,N14,N18/22
11309	44	5,9,10,11/22	11462	27	21,22,29/22	12248	45	30/22	13267	37	17/22
11310	2	N5/22	11463	20	21,22,29/22	12251	24	23,30/22	13278	29	18/22
11311	25	10/22	11464	18	29,31/22	12252	25	23/22	13282	12	27/22
11312	7	5,9,17/22	11465	41	8,11,21,29/22	12254	51	17,21,26/22	13285	12	17/22
11313	24	5,17/22	11466	40	12,21/22	12255	18	17/22	13287	13	16/22
11314	27	5/22	11467	45	8,11,12,18/22	12256	19	17/22	13288	44	5,19/22
11315	33	10,19/22	11468	45	8,11/22	12261	31	15,23,29/22	13301	22	5,9,21/22
11316	43	7,8,14,17,27/22	11469	10	12,21/22	12263	58	20,29/22	13302	25	5,14/22
11317	33	7,8,14,17,19,27/22	11470	40	12,27/22	12266	34	20/22	13303	15	14/22
11318	2	N10,N11/22	11471	1	N12,N27/22	12268	12	23/22	13305	31	14/22
11319	34	7,8,14,19/22	11472	37	17,31/22	12270	40	29/22	13309	30	11/22
11320	1	N5/22	11473	1	N12/22	12272	33	8,10,23/22	13312	24	21/22
11324	40	8,29/22	11475	19	17,18/22	12273	61	8,10,30/22	13316	24	14/22
11325	41	15/22	11480	41	15,26,27,29,31/22	12274	39	10,30/22	13324	15	21/22
11326	41	8,12,25,26,29/22	11482	1	N12,N27/22	12277	37	12/22	13325	16	21/22
11327	38	12,17,25,26,29/22	11486	16	29/22	12278	80	7,8,10,28,30/22	14012	1	N31/22**
11329	41	29/22	11487	20	16/22**	12280	12	8,10,15,20,25,29,30/22	14196	1	N31/22
11330	24	21/22	11488	29	27/22	12281	57	7,28/22	14198	3	N11/22
11331	22	8/22	11489	41	11,18,27,29/22	12282	38	29/22	14209	3	N31/22
11332	34	17,21,26/22	11490	22	27/22	12284	17	23/22	14212	3	N7,N31/22
11339	6	13,21/22	11491	40	11,18,27,29,31,32/22	12285	43	14,15,23,29,30/22	14215	2	N29/22
11340	80	14,17,21/22	11495	17	16/22**	12286	33	14,15,23,30/22	14217	2	N14/22
11341	45	13,17,21,26/22	11496	13	N15,N18,N26,N27,N29, N31/22	12287	19	14,23,30/22	14220	1	N29,N31/22
11342	57	11,17/22	11498	18	16/22**	12288	21	14,15,23,29/22	14334	1	N7/22
11344	41	13,17,21/22	11502	34	13,15,21,27,29/22	12289	52	23/22	14348	1	N7/22
11345	36	21/22	11504	18	12/22	12300	49	7,8,13,16,17,29,30/22	14359	1	N7/22
11346	5	14/22	11505	5	11,29,30/22	12301	24	N7,N8,N16,N17,N23, N29,N30/22	14500	28	12/22
11347	42	13,21/22	11506	47	18,20,29,31/22	12304	49	11/22	14760	1	N7/22
11353	9	5,17/22	11507	36	12,13,15,16,21,27/22	12311	48	12/22	14772	18	7/22
11356	42	6,17,29/22	11508	22	12,13,15,16,21,27/22	12314	34	8,23,27/22	14773	17	7/22
11357	44	14/22	11509	32	13,15,21,22,27,30/22	12316	37	8,9,10,30,31/22	14776	2	N7/22
11358	59	14,21/22	11510	20	12,15,16,21,27/22	12318	45	8/22	14777	1	N31/22
11359	14	17/22	11511	18	12,13/22	12323	26	8,9,13,15,23/22	14781	21	16/22**
11361	78	5,17,29,32/22	11512	66	11,29,30/22	12324	37	9,10,12,13,15,16,20,29, 30/22	14782	26	16/22**
11362	6	N19/22	11513	29	11,29,30,31/22	12326	53	16,17,29/22	14783	21	16/22**
11363	47	17,29/22	11515	19	16/22**	12327	109	17,29/22	14784	21	16/22**
11364	46	17,21,32/22	11516	32	8/22	12331	33	17/22	14785	18	16/22**
11365	25	21/22	11517	18	22,31/22	12333	38	22/22	14820	22	7,19/22
11366	16	14,19/22	11518	38	8,26/22	12337	24	27/22	14822	32	24/22
11367	39	25,31/22	11519	13	12/22	12343	21	18/22	14826	28	19/22
11369	48	21,25/22	11520	45	15,18,26,31/22	12352	36	23,24,25,27,29/22	14829	7	19/22
11370	29	15,29/22	11521	32	15,18,26,29,31/22	12354	47	23,24/22	14830	34	7/22
11371	42	17,31/22	11522	21	12,29/22	12358	23	23/22	14832	35	24/22
11372	35	12,14,17,19,20,29/22	11524	54	5,8,12,13,26,31/22	12363	42	12,14,21,23,29/22	14833	27	24/22
11373	52	12,15,19,29/22	11525	11	N20/22	12364	41	12,14,20,21,23,29/22	14842	17	7/22
11374	38	11,12,15/22	11526	11	12/22	12365	29	29/22	14846	16	7/22
11375	39	11,12/22	11527	18	12/22	12366	30	12,14,21,23/22	14847	31	7/22
11376	58	16/22	11528	3	8,12,15,18,26,29,31/22	12367	25	21,23,29/22	14848	60	24,25/22
11377	11	16,17/22	11534	40	8,12,14,20/22	12368	28	20,21/22	14850	56	25/22
11378	40	16/22	11536	20	20/22	12369	27	20/22	14853	19	24,25/22
11380	4	17/22	11537	40	8/22	12372	38	12,17/22	14854	16	24,25/22
11383	55	29/22	11541	42	7,10,11,14,15,20,29/22	12378	15	7/22	14860	37	32/22
11384	38	16/22**	11542	20	14,29/22				14862	29	32/22
11385	29	11,29/22							14865	17	32/22

CHARTS AFFECTED BY NOTICE TO MARINERS
NM 5/22 THROUGH NM 32/22

Note: N indicates Not For Sale; P indicates Preliminary; T indicates Temporary;
* indicates New Edition/New Chart; ** indicates Chart Canceled

Chart No.	Ed. No.	Notice to Mariners No.	Chart No.	Ed. No.	Notice to Mariners No.	Chart No.	Ed. No.	Notice to Mariners No.	Chart No.	Ed. No.	Notice to Mariners No.
14901	18	5,12/22	16547	10	29/22**	18477	6	16/22	21441	28	N31/22
14904	28	5,12/22	16549	17	29/22**	18480	32	20/22	22032	20	12/22
14917	25	26/22	16551	11	29/22**	18484	12	11/22	22051	19	15/22
14925	24	5,12/22	16553	7	29/22**	18504	66	13,15,16,25/22	22052	8	N27/22*
15889	1	N12/22*	16556	6	29/22**	18521	77	12/22	22054	2	N22/22*
15890	1	N12/22*	16561	4	29/22**	18523	58	22/22	22090	2	23,26/22
16005	12	16/22	16566	12	29/22**	18524	38	13/22	22111	4	23,26/22
16041	9	7/22**	16570	12	24/22	18525	38	8,9,11,15,22/22	22112	4	N20,N23/22
16042	8	7/22**	16575	3	24/22	18526	61	8,9,11,22/22	22113	9	N20,N23/22
16043	8	7/22**	16576	5	24/22	18527	24	16/22**	22114	5	20/22
16044	8	7/22**	16587	3	24/22	18528	11	16/22**	22121	10	N30/22
16045	8	7/22**	16590	12	24/22	18529	11	16/22**	22172	10	N27/22*
16046	8	7/22**	16591	10	24/22	18551	8	16/22**	22173	38	N31/22*
16061	9	7/22**	16592	11	24/22	18553	7	16/22**	22181	18	N29/22
16062	8	7/22**	16597	10	24/22	18556	26	24/22**	22182	7	19,25,26/22
16063	8	7/22**	16598	11	24/22	18580	24	25/22	22205	3	11,25/22
16064	7	7/22**	16599	8	24/22	18584	48	25/22	22221	20	25/22
16065	7	7/22**	16603	9	24/22	18587	71	13,21/22	22225	3	11/22
16066	8	7/22**	16604	12	12,24/22	18589	16	24/22**	22233	30	N8/22
16067	8	7/22**	16605	10	24/22	18600	15	24,25/22	22251	12	N11/22
16081	8	7/22**	16606	12	24/22	18603	17	24/22	22252	19	N24/22
16082	8	7/22**	16608	5	24/22	18605	13	24/22**	22259	6	N12/22
16083	7	11/22**	16648	6	24/22	18620	24	5/22	22264	4	N12/22*
16084	8	11/22**	16681	11	24/22	18622	56	5/22	22275	4	12/22
16085	7	11/22**	16683	12	24/22	18626	16	24/22**	22281	11	N18/22*
16086	8	11/22**	16701	23	24/22	18628	9	24/22**	22282	18	N15/22*
16087	8	11/22**	16702	14	24/22	18643	18	16/22	22290	5	12,16/22
16088	6	11/22**	16704	14	24/22	18645	28	16/22	22293	15	12/22
16101	7	11/22**	16706	11	24/22	18647	16	24/22**	22305	3	16/22
16102	6	11/22**	16709	25	5/22	18651	45	16/22	22311	20	N16/22
16103	6	11/22**	16710	18	5,7/22	18657	19	16/22	22313	4	N31/22
16104	6	11/22**	16711	3	24/22	18659	16	16/22**	22314	2	N17,N31/22
16121	6	11/22**	16713	4	24/22	18660	3	16/22**	22341	10	N16/22
16122	6	11/22**	16723	16	24/22	18661	30	13/22	22342	10	N20/22
16123	7	11/22**	16741	12	24/22	18663	6	13/22	22351	3	N12,N13/22
16124	7	11/22**	16761	17	24/22	18666	1	16/22**	22352	7	N13,N30/22
16145	1	24/22	17010	1	N25/22	18667	12	16/22**	22395	2	12/22
16161	1	24/22	17315	25	13/22	18682	15	16/22**	22397	1	N12/22
16190	2	24/22	17409	12	16/22**	18686	14	24/22**	22404	16	N12/22
16200	16	16/22	17411	2	N14,N25,N29/22	18687	13	16/22**	22405	7	N12/22
16204	8	16/22	17420	29	14/22	18703	26	27,29/22	22410	33	N12/22
16304	3	24/22	17430	12	28/22	18704	13	24/22**	22412	2	12/22
16305	11	24/22	17431	12	16/22	18721	12	16/22	22420	3	N12/22
16315	11	24/22	17433	13	16/22**	18727	12	24/22**	23010	4	24/22
16338	5	24/22	17439	2	N14/22	18744	33	8/22	23023	4	24/22
16343	9	29/22**	17440	2	N29,N30,N32/22	18746	40	13/22	23030	6	15,24/22
16363	13	29/22**	17442	2	N29,N30,N32/22	18748	1	24/22**	23101	5	24/22
16381	10	7/22	17496	1	N18/22	18749	44	13,19,31/22	24004	36	14/22
16382	12	7/22	17499	1	N25/22	18751	48	13/22	24012	40	15/22
16423	3	7/22	17520	2	N11/22	18754	20	16/22**	24028	6	22,27/22
16430	7	7/22	17523		N20,N21,N25,N27, N28/22	18755	10	24/22**	24050	12	N6,N8,N15,N19,N24/22
16431	8	7/22				18756	8	24/22**	24051	1	6/22
16432	12	7/22	17525	1	N20,N25,N27,N28/22	18762	16	24/22**	24052	17	N11,N12,N20,N29/22
16433	9	7/22	18003	20	25/22	18763	11	24/22**	24053	18	N9,N23/22
16434	7	7/22	18010	22	25/22	18764	10	24/22**	24055	7	N12,N15,N17,N18,N19, N24,N29/22
16435	7	7/22	18400	51	22,25,26,32/22	18765	17	23,29/22	24057	6	N8,N11,N12,N16/22
16436	11	7/22	18404	2	N11,N12,N31/22	18772	48	16,23,29/22	24092	16	N27/22*
16441	9	7/22	18421	53	18,22,26/22	18773	43	23,29/22	24150	28	N7,N13,N14/22
16442	8	7/22	18424	28	18/22	19016	12	20/22**	24154	13	N13/22
16446	9	7/22	18426	3	N12/22	19019	11	20/22**	24155	7	N5,N7,N13,N14,N32/22
16450	3	7/22	18427	25	20,25/22	19022	12	20/22**	24161	13	N16,N25/22
16462	7	7/22	18429	11	16/22	19322	8	20/22**	24162	11	N12,N16,N25,N29/22
16463	8	7/22	18430	9	16,18/22	19326	7	20/22**	24164	6	7,13,14/22
16465	3	7/22	18431	9	22/22	19327	11	11/22	24201	6	N11/22
16467	3	7/22	18432	7	16,22/22	19329	8	20/22**	24202	8	N11/22
16471	12	7/22	18433	6	16/22	19331	8	20/22**	24203	37	N11/22
16474	9	7/22	18434	7	16/22	19332	9	20/22**	24220	14	15/22
16475	10	7/22	18436	2	N14,N15/22	19340	27	24/22	24222	3	11,15/22
16476	11	7/22	18437	2	N15/22	19341	9	20/22**	24224	1	11/22
16477	8	7/22	18440	31	9,12,26,32/22	19342	11	11/22	24251	24	N8/22
16478	11	7/22	18441	49	26,32/22	19348	8	27/22	24252	6	N8/22
16484	8	7/22	18448	36	9,12,25,26/22	19350	11	20/22**	24350	2	5,6/22
16486	8	7/22	18449	21	25/22	19357	25	24/22	24354	1	N5,N6,N7/22
16487	7	7/22	18450	20	25,26/22	19361	9	20/22**	24360	1	6,7/22
16490	9	7/22	18456	21	9,14,25/22	19384	9	20/22**	24380	2	27/22
16501	8	29/22**	18457	10	24/22**	19385	8	20/22**	24388	2	16,27,28/22
16511	8	29/22**	18461	1	N25,N27/22	19401	9	20/22**	24390	3	22/22
16513	6	29/22**	18462	1	N26/22	19402	7	20/22**	24404	9	8/22
16514	5	29/22**	18464	25	7,12,26/22	19421	8	20/22**	24405	12	N8/22
16515	8	29/22**	18465	39	26,32/22	19441	8	20/22**	24410	2	22/22
16516	8	29/22**	18467	2	N27,N32/22	19442	6	20/22**	24430	5	15/22
16517	7	29/22**	18468	19	25/22	19461	7	20/22**	24454	5	5,6,8/22
16518	7	29/22**	18469	1	N16,N19,N20,N22, N26/22	19481	12	27/22	24460	4	12/22
16521	7	29/22**				19482	10	27/22	24462	6	N12/22
16522	7	29/22**	18471	11	7,12,26,32/22	19483	6	20/22**	24480	2	N21/22
16532	7	29/22**	18474	11	25,26/22	21023	41	31/22	24501	3	20/22
16535	13	29/22**	18476	7	16/22**	21401	21	23/22			

**CHARTS AFFECTED BY NOTICE TO MARINERS
NM 5/22 THROUGH NM 32/22**

Note: N indicates Not For Sale; P indicates Preliminary; T indicates Temporary;
* indicates New Edition/New Chart; ** indicates Chart Canceled

Chart No.	Ed. No.	Notice to Mariners No.	Chart No.	Ed. No.	Notice to Mariners No.	Chart No.	Ed. No.	Notice to Mariners No.	Chart No.	Ed. No.	Notice to Mariners No.
24502	7	N20/22	36014	3	N22,N29,N31/22	37246	17	N7,N9,N13,N14,N15,N17,N24,N32/22	43303	5	N5,N18,N22,N23,N25,N32/22
24504	7	19,30/22	36016	2	N22,N31/22	37247	2	N7,N13,N28/22	43304	2	11,13,22/22
24508	4	13,19,30/22	36017	4	N22,N31/22	37248	21	N13,N14,N15,N16,N17/22	43321	7	N22,N23,N25,N28,N32/22
24509	3	31/22	36018	4	N14/22	37250	1	N7,N14,N15,N24/22	43322	7	N10/22*
24510	3	13,19,30,31/22	36019	3	N16/22	37261	11	N16,N19,N20,N21,N25,N27/22	43341	7	12,13,18/22
24511	2	14/22	36023	2	N22,N31/22	37262	21	N19,N20,N25,N28/22	43342	8	N12,N13,N20/22
24512	3	14,21/22	36025	6	N8,N31/22	37264	4	N23/22	43360	22	N30/22
25001	7	22/22	36033	4	N6,N19/22	37265	3	16,18,19,21,30/22	43363	6	N12,N14,N16,N22,N23,N25,N32/22
25483	20	19/22	36034	4	N19/22	37266	3	16/22	43364	6	N14/22
25485	45	5/22	36035	4	N16,N25,N31/22	37320	17	N10,N11,N17,N18,N24,N25,N26/22	43369	6	28/22
25524	44	N27/22	36039	4	N19,N20/22	37325	10	N10,N11,N20,N25/22	43370	8	N17,N28/22
25526	3	N14,N27,N29/22	36042	6	N12,N16,N18/22	37326	3	N10,N11,N20,N21,N25/22	43372	5	N5,N6,N8,N11,N12/22
25527	32	N18,N27/22	36049	4	N16,N31/22	37328	3	N10,N11,N24,N25/22	43373	8	5,7,8,13,23,25,27,28/22
25550	2	16,17/22	37000	23	32/22	37330	3	N18/22	43374	2	N27/22
25566	27	16/22	37003	3	N13/22	37334	4	N31,N32/22	43375	7	5,7,9,13,15,17,28,31,32/22
25600	47	27/22	37004	4	N8,N22/22	37342	4	N31,N32/22	43378	3	N15/22*
25601	34	16,17/22	37006	4	N22/22	37360	16	N31,N32/22	44015	10	8,22,23,25,28,29,30,32/22
25640	45	27/22	37008	6	N22/22	37401	10	N5,N14/22	44030	9	23/22
25641	29	5,27/22	37010	25	N13,N14,N21,N32/22	37402	8	N5/22	44036	5	8,15,17,30,32/22
25644	16	26/22**	37017	5	N8,N21,N25,N29/22	37403	24	N23/22	44038	5	15,21/22
25645	20	26/22**	37019	7	N21/22	37481	7	13,20,25,29/22	44039	1	N9,N30/22
25647	12	26/22**	37020	6	N25,N29/22	37506	4	16,18/22	44040	26	N8,N13,N15,N21,N22,N30/22
25650	37	15/22	37022	5	N7,N31/22	38030	1	19/22	44041	9	N8,N21,N27,N32/22
25659	9	26/22**	37025	26	13,26,27,31/22	38032	6	16/22	44042	9	N5,N8,N14,N17,N19,N21,N27,N29,N32/22
25663	29	15/22	37028	7	N10,N11,N21,N22,N29/22	38041	1	27/22	44043	9	N5,N8,N14,N17,N19,N21,N27,N29,N32/22
25665	11	26/22**	37030	3	N20,N21/22	38044	1	N27/22	44044	7	N32/22
25667	21	15/22	37033	3	N13,N27/22	38341	3	16/22	44045	7	N8,N13,N21/22
25675	10	26/22**	37035	6	N7,N19,N20,N21,N26,N29/22	38540	4	7,16/22	44046	11	N16,N22/22
25685	9	26/22**	37036	5	N7,N9,N19,N20,N21,N25,N29,N32/22	38541	5	N16/22	44048	13	N8/22
25687	13	26/22**	37037	3	N19/22	38542	4	7,8,16/22	44049	11	N5,N9,N13,N16,N22,N32/22
25689	10	26/22**	37039	10	N17/22*	38546	3	N7,N16/22	44050	25	N13,N16,N17,N22,N32/22
26060	1	27/22	37040	8	N17*,N29/22	38606	1	18/22	44052	2	N15,N22,N29,N31/22
26066	14	27/22	37050	10	N11,N17,N18,N24/22	38607	3	N18/22	44054	2	N5/22
26068	12	20,27/22	37051	7	N19,N20,N21/22	38610	1	19/22	44061	22	5,8,10,14,22,26,29/22
26070	2	27/22	37052	9	N7,N19,N21,N22,N29/22	38690	2	29/22	44064	20	N8,N10,N14,N16,N19,N22,N26,N32/22
26194	6	24/22**	37055	3	N13/22	42004	1	N19/22	44065	8	N27/22
26230	13	N29/22	37059	6	N22/22*	42742	3	19/22	44067	23	13,14,15,16,20,26,27/22
26237	3	20/22	37062	3	N21/22**	42760	5	19,29/22	44069	17	N5,N8,N26,N27,N29/22
26240	7	20,25/22	37063	1	N21/22*	42762	4	N19,N21,N29/22	44070	4	N16,N27/22
26244	3	20,25/22	37064	2	N31/22*	42767	1	N19,N21/22	44081	12	N7,N8,N9,N10,N12,N18,N25,N29,N30/22
26247	19	25/22	37066	19	N15/22*	42768	1	N12,N21/22	44076	4	N16,N27/22
26248	5	12/22	37080	4	N23/22	43030	25	N5,N8,N9,N10,N13,N14,N18,N21,N22,N26,N27,N31/22	44082	12	N7,N8,N9,N10,N12,N18,N25,N29,N30/22
27080	4	12,31/22	37095	4	N8,N16,N18,N19,N21,N23,N25,N30/22	43058	3	10,15,25,26,27/22	44083	9	N13,N15,N16,N17,N22,N25,N28,N29,N30/22
27083	40	N30,N31/22	37103	9	17/22	43059	3	9,10,15,25,26,27/22	44084	2	N13,N15,N16,N24,N25,N26,N30/22
27084	4	31/22	37115	3	N17,N19,N21,N27/22	43060	5	N16,N25,N26,N27/22	44085	2	12,25,27/22
27085	67	N31/22	37120	4	N5,N6,N8,N10,N11,N15,N16,N17,N18,N21,N29/22	43080	5	N27/22	44087	1	N13,N26/22
27120	4	19/22	37121	12	N5,N6,N8,N10,N11,N14,N16,N17,N22/22	43100	4	22,26,28/22	44100	9	N5,N8,N13,N15,N22,N27,N31,N32/22
27163	22	N29/22	37129	7	N9,N15,N17,N18,N21,N29/22	43103	5	N22/22	44105	3	N26/22
28190	2	19/22	37140	34	5,6,10,11,16,17,18,21,22,25,29/22	43106	7	N13/22	44120	9	N7,N8,N9,N15,N18,N28,N29,N30,N31/22
28196	5	N19/22	37162	14	N5,N13,N18,N20,N32/22	43120	4	20/22	44123	3	N14/22
35000	26	31/22	37163	21	N8,N15/22	43121	6	N32/22	44140	10	N8,N16,N17,N22/22
35008	22	13/22	37164	6	N18,N20,N32/22	43124	6	N5,N6,N7,N12,N13,N26,N28/22	44178	3	N9,N10,N29,N32/22
35013	3	N9/22*	37165	4	N23/22	43141	6	N5,N6,N7,N12,N13,N26,N28/22	44179	3	N29/22
35014	6	N9/22*	37166	4	N7,N13,N14,N18,N20,N21,N32/22	43142	5	N5,N6,N12,N13,N28/22	44180	7	N19,N21,N22,N25/22
35015	5	N14/22	37221	14	23,25/22	43143	4	5,6,7,26/22	44181	6	N8,N29/22
35024	4	N16,N25/22	37222	15	N6,N13,N16,N23,N25,N29,N31,N32/22	43161	2	14,22/22	44182	6	N8,N13,N23,N25/22
35035	3	N31/22	37223	15	21,23,25/22	43163	3	23/22	44183	7	N13,N16,N23/22
35037	3	N31/22	37224	12	N13,N32/22	43167	6	N13/22	44184	10	N8,N29/22
35057	3	N5,N8/22	37226	19	N7,N9,N13,N14,N19,N20,N23,N25,N31/22	43220	3	5,9,32/22	44185	8	N8,N25/22
35058	2	N8/22	37228	15	N6,N9,N10,N12,N13,N14,N16,N19,N20,N22,N31/22	43221	4	22,32/22	44187	3	N19/22
35059	3	N9/22	37229	16	N6,N9/22	43223	4	25/22	44200	10	N9,N19,N22,N23,N25/22
35068	4	N26/22	37230	15	N9,N14/22	43224	3	5,9,11,32/22	44283	3	N7/22
35071	5	N26/22	37231	19	N7,N9,N19,N20,N23,N25,N31/22	43225	5	N5,N9,N11/22	44310	6	N9/22
35074	3	N8/22	37232	13	N9,N14,N16,N20,N25/22	43240	4	5,9,12,13,14,23,26/22	44319	3	7,12,20,21,23,29/22
35078	6	N31/22*	37235	11	13,29/22	43241	5	N23/22*	44320	5	N21,N29/22
35079	6	N29/22*	37237	7	N5,N25/22	43242	5	N15*,N23/22	44324	1	N28/22
35089	4	N29/22*	37241	22	N5,N13,N32/22	43243	5	N14*,N23/22	44326	1	N16,N26/22
35090	5	N17/22*	37242	13	N5,N7,N8,N13/22	43245	5	N9,N12/22	44340	13	N7,N12,N16,N20,N21,N23,N27,N30/22
35091	3	N8/22	37243	7	N5,N25/22	43246	6	N5*,N13,N14,N26/22	44341	9	N5,N12,N21,N22,N27/22
35092	5	N12/22	37244	14	N22/22*	43247	6	N5*,N9,N12,N13,N14/22	44342	10	N5,N12,N17,N22,N23,N24,N25,N27,N28/22
35094	4	N20/22*									
35119	4	N14,N19,N22,N29/22									
35126	5	N14,N29/22									
35127	6	N9*,N16,N20/22									
35140	4	N12/22									
35180	7	N5,N27/22									
36000	3	N8,N9,N20,N31/22									
36001	2	N16,N18,N25/22									
36002	1	N7/22									
36003	3	8,16,18,19,30/22									
36006	5	N7,N8,N18,N19,N20,N22/22									
36007	2	N7,N18,N20,N22/22									
36008	3	N18/22									
36009	4	N11*,N18,N31/22									
36011	5	N19,N20/22									
36012	2	N22,N25,N31/22									

CHARTS AFFECTED BY NOTICE TO MARINERS
NM 5/22 THROUGH NM 32/22

Note: N indicates Not For Sale; P indicates Preliminary; T indicates Temporary;
* indicates New Edition/New Chart; ** indicates Chart Canceled

Chart No.	Ed. No.	Notice to Mariners No.	Chart No.	Ed. No.	Notice to Mariners No.	Chart No.	Ed. No.	Notice to Mariners No.	Chart No.	Ed. No.	Notice to Mariners No.
44352	4	N7,N14,N20,N23,N25,N27/22	52120	13	N8,N13,N15,N16,N20,N24,N26,N27,N29/22	54131	3	12,25,31,32/22	55049	7	N12,N13,N20,N21,N23/22
44353	1	N27/22	52121	10	N13,N20,N24,N26/22	54141	5	N15/22	55060	9	N5,N8,N20/22
44360	11	N16,N20,N21,N30/22	52122	17	N7,N8,N13,N15/22	54151	1	7,8,11,13,19/22	55063	2	N17,N30/22
44361	8	N20/22	52125	2	N8,N15,N29/22	54161	13	N15,N17/22	55064	4	N9,N14,N15/22
44362	2	N20/22	52126	2	N7,N8,N13,N15,N29/22	54162	6	N15/22*	55081	1	N24,N25/22
44364	1	N7/22	52140	7	N29/22	54165	3	N5,N20,N23,N28,N31/22	55082	11	N16,N24,N25/22
44365	2	N16/22	52142	3	5/22	54168	2	N20,N28,N29/22	55085	9	16,17,24/22
44366	2	N13,N16,N21,N25/22	52160	7	14/22	54169	4	N5,N19,N28,N29,N31/22	55100	8	17,18,19,23,25,26,30,31/22
44367	3	N16,N21/22	52161	14	14,15/22	54180	7	12,13,19,23,30,32/22	55102	1	N8,N11,N13/22
44400	6	N29,N32/22	52164	2	14/22	54195	3	13,23/22	55103	4	N8,N11,N13/22
44401	10	N29,N32/22	52170	3	6,13,14/22	54200	4	13,23,29,31,32/22	55104	3	N13/22
44410	6	N28,N29/22	52172	2	6,13,14/22	54201	6	23,29/22	55105	7	26/22
44420	7	28/22	52200	8	15/22	54220	5	18,23,25,29/22	55110	2	12,15,23,25,30,31/22
44430	4	N8,N16,N17,N22,N25,N30/22	52220	7	7,20,22,24/22	54223	2	12/22	55113	1	N23,N25/22
44442	2	N32/22	52240	10	N7,N20,N22,N28/22	54224	3	12,29,30/22	55120	2	5,18,19,30/22
44443	1	N21,N25,N29,N32/22	52243	12	N28/22	54226	2	18,23/22	55128	3	N26,N29/22
44446	2	N14/22	52262	6	15,19,20,21,22,24,25,28,30,31/22	54227	3	N9,N18,N23,N32/22	55129	7	29/22
44447	1	N14,N27/22	52263	5	15,19,20,21,22,24,25,28,30,31/22	54265	1	18,23/22	55130	2	11,16,17,19,24,25,26,30/22
44462	6	N7,N12,N16,N19,N24,N28,N30/22	52281	4	13/22	54266	3	N16/22	55131	1	17,18,19,26/22
44463	10	N7,N16,N17,N19,N22/22	52282	11	N13/22	54279	4	15/22	55138	5	8,9,13,14,25,26/22
44465	4	N7,N8,N16,N17,N19,N22,N26,N30/22	53011	3	14,15/22	54282	1	25/22	55139	6	25/22
51002	7	22/22	53031	2	12,20/22	54286	4	12/22	55140	3	N11,N13,N14/22
51007	23	27,30,31/22	53060	15	12/22	54288	5	31/22	55150	2	23,24,25/22
51013	5	32/22	53061	12	N12,N13,N23,N32/22	54300	12	8,12,17/22	55160	2	20/22
51032	10	29/22	53062	15	N23/22	54301	4	8,12/22	55170	2	20/22
51041	3	15,16,25/22	53081	10	N14/22	54314	2	14/22	55180	2	11,14,26/22
51061	14	19/22	53082	15	N14/22	54318	3	17/22	55200	3	N11/22
51082	8	N5,N23/22	53084	7	N13,N16,N32/22	54320	4	28,30/22	56011	1	8,14/22
51100	8	N22,N29/22	53085	7	N13,N16/22	54322	8	17/22	56031	1	11,21,24/22
51103	10	24,26/22	53086	9	N16,N21,N27,N32/22	54327	4	25,26,27,28/22	56043	6	27/22
51104	1	8,24/22	53087	10	N16/22	54334	3	17/22	56044	3	5,13/22
51109	6	N14,N22,N27,N29/22	53093	4	N20,N21,N27,N32/22	54335	3	8,28/22	56048	3	N5/22
51120	7	N29/22	53100	18	N12,N17,N20,N26/22	54339	9	N27/22	56060	9	5,9,11,24/22
51141	1	N18/22	53101	9	N18/22	54340	8	13,18,23,28,29/22	56065	4	N9,N11,N24/22
51143	6	N15/22	53104	4	N8,N18/22	54343	10	13,14,29/22	56067	4	N9,N11/22
51144	5	N15,N18/22	53110	2	N26/22	54344	6	8,13,14,28,29/22	56068	1	N24/22
51150	2	N27/22	53120	15	N12,N20/22	54346	10	N21/22*	56100	15	N14*,N21,N28/22
51154	3	22/22	53122	5	N13,N17/22	54349	4	25/22	56101	8	N21,N28/22
51155	2	N22,N29/22	53125	3	N11,N12,N15,N16,N18,N20/22	54352	3	23/22	56102	25	N21/22
51163	5	N21,N28/22	53133	5	N11,N12,N14,N15,N16/22	54359	3	N17,N18/22	56103	9	N21/22
51201	3	9/22	53183	14	N13,N17,N20,N23/22	54360	12	28/22	56120	13	21,28/22
51220	8	32/22	53184	5	5,10,23/22	54380	7	N19,N28,N31/22	56141	6	21/22
51222	7	N32/22	53191	2	N9/22*	54382	9	19/22	56190	3	8/22
51223	3	N32/22	53200	8	N27,N29/22	54386	10	19/22	56195	3	8/22
51224	1	24,25/22	53201	7	N25,N30,N31,N32/22	54387	8	N8,N14,N19,N21,N31/22	57000	10	31/22
51240	2	25/22	53202	8	N15,N27/22	54400	8	7,11,12,14,15,21,23,24,25/22	57035	10	24/22
51260	5	N14,N19,N27/22	53203	12	N23/22	54402	4	32/22	57060	8	N31/22
51261	23	29/22	53204	11	N23/22	54403	4	5,7,8,11,13,14,17,21,23,24,25,28/22	57061	6	26/22
51263	23	5/22	53205	4	N7/22	54404	4	7,9,11,14/22	57062	10	26/22
51280	8	24,25/22	53206	8	N11/22	54407	4	15/22	57063	6	N31/22
51344	3	N19/22	53212	4	N31/22	54409	3	N31/22*	57064	4	N16/22
51346	1	N14/22	53220	8	N27,N29/22	54410	1	N22/22*	57065	1	26/22
51347	2	N14,N27/22	53223	5	5,17/22	54412	1	15,17/22	57081	4	N24/22
51440	4	20/22	53242	13	N14*,N21,N23/22	54418	4	15/22	57082	4	24/22
51460	4	8,20/22	53244	3	N21,N23,N27,N29,N32/22	54421	7	N6/22	57142	7	N9/22
51461	4	20,21/22	53262	8	20/22	54423	5	6/22	57170	1	9,11/22
51473	1	N8,N11,N30/22	53263	2	N13/22	54430	1	30/22	57182	12	20,24/22
51559	4	19,20/22	53268	4	20/22	54439	1	N25/22*	57183	1	20,24/22
51560	11	29/22	53279	4	8,17/22	54440	4	5,11/22	57240	8	26/22
51561	11	19/22	53284	4	13/22	54441	7	N22/22*	57242	9	26,28/22
51580	13	5,6/22	53285	4	17/22	54444	1	N23/22*	57243	2	26/22
52031	2	29/22	53287	7	N5,N6,N11,N17/22	54462	5	13/22	57300	3	5/22
52036	1	N28/22	53313	1	N26,N32/22	54463	6	N9,N13/22	57480	9	24/22
52039	6	N20,N24,N28,N31/22	54040	4	N7/22	54480	9	N5,N11,N20,N23/22	57482	13	N21/22
52040	19	N24,N28,N31/22	54041	7	5,6,7,8,9,11,12,13,14,15,17,22,23,25,30/22	54481	10	N11,N19,N20,N21,N23/22	57485	5	23/22
52043	23	N13/22	54043	3	N9,N15,N17,N20,N30/22	55001	4	13,17,25,26,30,31/22	61000	21	24/22
52046	22	N28,N29/22	54061	14	N7/22*	55022	1	N13,N19/22	61040	7	24/22
52048	4	N7/22	54082	13	N23/22	55023	1	N13,N31/22	61200	7	13/22
52053	1	N6,N28,N29/22	54083	5	N23/22	55040	4	12,13,32/22	61204	6	N6,N11,N13,N14/22
52054	2	N29/22	54085	3	N31/22	55042	2	N13,N31/22	61542	8	N8/22
52062	8	N9/22	54090	3	15,16,18,23,31/22	55043	2	5,8,13,14,16,30/22	61581	6	N29/22
52063	1	N8,N9,N16/22	54091	1	27,28,29/22	55044	5	13/22	61582	4	29,31/22
52079	1	N16/22	54095	3	18,23,25,29,31,32/22	55045	3	N8,N17/22	62000	21	24/22
52080	15	N16,N20,N24,N29/22	54105	3	9,11,12,15,17,23,25,29,31,32/22	55046	5	N6,N8,N9,N12,N13,N19,N22,N31,N32/22	62028	16	5,11/22
52082	4	N20/22	54115	3	9,15,17,23,30,31,32/22	55047	9	N8/22	62032	18	23,26,27,28,29/22
52083	2	16,17,18,24/22	54120	5	9,11,12,15,17,32/22	55048	13	N8,N9,N14,N15,N30/22	62033	5	N23,N26,N27,N28,N29/22
52084	3	29/22	54125	4	5,12,19,29,30,32/22				62090	8	N24/22
52088	3	29/22							62092	8	N23,N24/22
52117	1	13,15,24/22							62105	4	N32/22
52118	1	13,15/22							62142	11	N5/22*
52119	1	13,22,24/22							62170	3	N16/22*
									62171	4	16/22**
									62172	4	N10/22*

SECTION I

NM 32/22

CHARTS AFFECTED BY NOTICE TO MARINERS
NM 5/22 THROUGH NM 32/22

Note: N indicates Not For Sale; P indicates Preliminary; T indicates Temporary;
* indicates New Edition/New Chart; ** indicates Chart Canceled

Chart No.	Ed. No.	Notice to Mariners No.	Chart No.	Ed. No.	Notice to Mariners No.	Chart No.	Ed. No.	Notice to Mariners No.	Chart No.	Ed. No.	Notice to Mariners No.
62220	9	28/22	63233	17	N25,N31/22	74227	4	N9/22*	83572	2	N31/22
62225	4	N6,N7,N28/22	63250	6	5,31/22	74243	3	N22/22	83574	3	N11,N13,N18,N19, N21/22
62250	6	19/22	63252	2	N5/22	74244	3	N19/22	91005	6	12,14,26/22
62312	3	18/22	63260	6	31/22	74246	4	N9/22*	91008	2	N10,N14,N18,N19,N24, N32/22
62313	5	N17/22	63270	8	N32/22	74262	3	N7,N31/22	91010	6	14,18/22
62314	3	22/22	63271	10	N30,N32/22	74265	2	7,31/22	91020	6	N21,N22/22
62315	1	N17/22	63290	8	N24/22	74290	12	12/22	91030	4	N7,N16,N17,N18/22
62330	2	18,27/22	63291	10	N24/22	74292	8	12/22	91060	2	N16,N17/22
62333	1	N27/22	63337	17	N29/22	74302	5	N24/22**	91286	11	N24/22
62340	3	27/22	63380	2	30/22	74304	2	N8,N9*,N12/22	91289	20	N24/22
62343	4	22,29/22	63383	6	N30/22	74311	4	N12/22	91294	9	N12,N16/22
62355	7	29/22	63400	1	22,31/22	74345	5	N7,N21/22	91297	10	N16/22
62361	3	N17,N20,N27/22	63413	6	N12/22	74397	6	N8/22	91320	4	21/22
62362	1	17,27/22	63417	3	N12/22	74402	2	N8,N26,N31/22	91323	2	N21/22
62367	1	N25/22	71005	1	22,23,31/22	74410	3	21,26/22	91326	2	21,22,24/22
62377	3	N14,N20,N21,N27/22	71006	5	22/22	74420	3	21/22	91330	1	21,22/22
62388	3	N18/22	71018	10	31/22	74545	3	6,7,9,21/22	91331	3	21,22/22
62389	1	N18/22	71033	31	12,31,32/22	74550	4	6,7,9,21/22	91350	1	N16,N18/22
62392	8	5,15,20/22	71042	3	N21/22*	74582	9	5,6,8,10/22	91360	3	N18/22
62400	18	N11,N12,N15,N21,N25, N26,N29/22	71043	4	N8/22*	74585	3	N5,N8,N13/22	92025	4	N7,N12,N23/22
62401	10	N9,N26/22	71045	2	22/22	74588	8	N17*,N24/22	92030	4	12,14,15,23,24,26/22
62404	5	N18/22	71059	2	N5/22	74592	2	N19/22	92033	5	21/22
62405	9	N15,N21,N25,N26,N29, N30/22	71061	16	N5/22	75035	18	25,26/22	92060	3	14/22
62406	4	N8,N15,N21,N23,N25, N26,N28,N29/22	71180	29	31/22	75051	6	21,23/22	92090	2	23,27/22
62408	7	9,23,26,27/22	71185	26	N31/22	75052	2	18,21,23/22	92100	4	30,31/22
62409	7	N12/22	71220	3	12/22	75130	16	11,15,17,18,25,32/22	92320	4	13,23,24/22
62412	14	N8,N12,N16,N29/22	71230	11	12,22/22	75134	3	11,15,17,18,25,32/22	92330	3	14/22
62420	6	N26/22	71238	1	N6,N8,N10,N11/22	75159	1	N6,N11,N16,N24, N31/22	92350	4	7,8,11,12,13,15,19,20,21, 22,24,25,26/22
62422	1	N29/22	71241	11	N19,N22/22	75164	5	N30/22	92370	2	14,24/22
62425	1	N8,N9,N12,N16,N27, N32/22	71243	6	6,8,10,11,19/22	75165	4	N30,N31/22	92380	4	N23/22
62428	10	N16,N25/22	71247	21	N11,N12,N16/22	75167	2	N9/22*	92383	8	N19/22
62432	19	N20/22	71248	4	N6,N20,N21,N27/22	75176	9	29/22	92385	5	N21/22
62440	9	N9,N23,N27/22	71250	2	N27,N31/22	75177	7	30,31/22	92390	3	7,12,23/22
62441	10	23/22	71252	4	N5,N10,N14,N18, N22/22	75251	5	20,24/22	92400	3	14,23,24/22
62442	7	N17,N23,N28,N29/22	71253	13	N11,N14,N16,N29/22	75252	1	N31/22	92410	4	8,11,12,14,22,23,24, 25/22
62444	3	N11,N12/22	71254	3	N14,N22,N31/22	75274	1	N13,N20,N21,N22,N23, N24/22	92460	2	23/22
62446	4	N29,N30/22	71255	8	N6,N8,N11,N14,N16, N22,N31/22	76020	8	32/22	92480	2	21/22
62447	3	N15,N30/22	71256	3	N5,N6,N8,N14,N20, N21/22	76050	8	32/22	92529	5	N7/22
62448	3	N9,N17,N19/22	71265	4	6,10,22,23/22	76070	9	32/22	93006	3	8,13,23/22
62449	4	23,26,27/22	71271	12	N21/22	76071	10	N17/22	93018	8	14/22
62451	8	N9,N17,N19/22	71273	5	N31/22	76080	8	32/22	93020	2	12/22
62452	4	5,9,11,12,13,14/22	71275	4	23/22	76151	7	11/22	93022	4	25/22
62453	7	N8,N9,N16,N26,N27, N32/22	71285	4	21/22	76160	4	32/22	93030	7	25/22
62458	1	15,18,22,26/22	71295	3	21/22	81048	10	25,26/22	93036	12	N8,N13,N19,N21, N26/22
62459	3	N9,N18/22	71305	3	N31/22	81054	16	26/22	93042	2	29/22
62460	5	8,15,20,23,25,26,28/22	71320	2	N27/22	81059	2	N25,N26/22	93043	2	N22/22*
62462	3	N8,N11,N12/22	71330	14	N12,N27/22	81063	6	20/22**	93044	3	N29/22
62463	3	N8,N11,N12,N28/22	71331	12	N12,N27/22	81086	8	20/22**	93049	2	N12/22
62465	1	N28/22	71335	3	N27/22	81092	5	20/22**	93113	3	N16,N18/22
62480	4	5,8,20,21,23,26,27,28, 29/22	71440	2	5,23/22	81145	1	20/22	93115	3	N16,N18/22
62490	4	29/22	71470	2	32/22	82005	5	7/22	93180	8	N14/22
62512	4	N5,N8,N15,N20,N21, N23,N25,N26,N28/22	72000	8	32/22	82010	6	7/22	93241	10	N16/22
62521	5	N12,N26,N27/22	72007	10	16/22	82015	13	7/22	93244	9	N28/22*
62531	6	N26,N29/22	72010	10	14,19/22	82060	4	13,16,17/22	93249	2	N30/22*
62541	4	N9,N16,N17,N25/22	72011	8	16,32/22	82071	6	7,13,16,17/22	93480	5	25/22
62550	4	N12,N26,N29/22	72021	8	16,32/22	82093	3	7/22	93520	13	8/22
62560	5	N9,N17,N19/22	72028	7	11/22	82095	2	7/22	93610	4	N19,N21/22
62570	5	N9,N17,N19,N20/22	72035	8	11,16,32/22	82192	6	12/22	93650	2	19/22
62580	4	N9,N17,N19/22	72045	2	16/22	82201	2	12/22	93690	3	8,19,21,26/22
62591	5	N20/22	72130	4	13,14,18,19,20/22	82242	1	7,12,20,26,31/22	93710	4	N19,N21,N26,N32/22
62593	1	7/22	72131	3	13,14,15,18,19,20/22	82244	5	7,12,26,31/22	93720	11	8,13,22,26,29/22
63000	14	11/22	72203	2	16/22	82253	7	7,31/22	93721	7	N9,N11,N12,N13,N16, N18,N20,N22,N28,N29, N30,N31/22
63005	19	30/22	72204	2	N16/22	82304	5	14,24/22	93725	7	N7,N12,N28,N29/22
63010	14	25,31/22	72223	8	16/22	82646	2	14,15/22	93726	5	14,16,21,24,25,29/22
63015	11	31,32/22	72231	10	N7,N9,N11/22	82649	5	14,15/22	93730	5	N8,N13,N22,N29/22
63050	3	11/22	73030	4	12,31/22	82683	5	N15/22*	93733	15	N8,N20,N22,N30/22
63053	6	N9,N11/22	73082	1	22/22	82694	7	N14/22*	93734	14	N11,N22/22
63054	4	N11/22	73393	3	N11,N13/22	82695	1	N5/22*	93736	26	N11/22
63060	8	11/22	73470	4	12/22	83052	3	25,32/22	93778	10	N10,N25,N26,N29, N32/22
63090	9	5,7/22	73581	4	7,14,15/22	83094	11	15,16,19/22	94004	7	14,15,18,19,23,24,27, 32/22
63100	3	5/22	73701	4	12,31/22	83116	5	20/22**	94016	3	8,11,14,15,21,27/22
63101	18	N7,N30/22	74000	6	18,25,26/22	83153	2	20/22**	94028	8	8,11,12,14,21,32/22
63102	22	N5,N30/22	74003	5	13/22	83157	6	20/22**	94033	6	12/22
63103	20	N30/22	74024	7	6,9,21/22	83251	2	25,26/22	94040	14	23/22
63110	5	N30/22	74027	9	5,6,9,13/22	83252	8	25,26/22	94060	12	8,9,20,26,29,32/22
63111	11	N30/22	74052	2	21,23/22	83253	2	25/22			
63201	11	N21,N24,N25/22	74155	3	N21/22*	83254	2	25,26/22			
63220	5	25,31/22	74174	1	N8,N13,N26,N29/22	83383	2	6/22			
63230	7	N25,N31/22	74180	3	N8,N17/22	83385	20	N5,N6,N7,N9,N13/22			
63231	10	N25,N31/22	74181	8	8,12,13,29/22	83425	6	14/22			
			74185	1	N8,N12,N17,N20,N26, N29,N31/22	83473	7	29/22			
			74189	2	N7/22	83476	26	25,29/22			
			74216	3	N19,N22,N29/22	83484	12	24/22			
						83570	2	18,19,21,31/22			

CHARTS AFFECTED BY NOTICE TO MARINERS
NM 5/22 THROUGH NM 32/22

Note: N indicates Not For Sale; P indicates Preliminary; T indicates Temporary;
* indicates New Edition/New Chart; ** indicates Chart Canceled

Chart No.	Ed. No.	Notice to Mariners No.	Chart No.	Ed. No.	Notice to Mariners No.	Chart No.	Ed. No.	Notice to Mariners No.
94061	7	N6,N7,N8,N9,N10,N16,N20,N26,N29,N30/22	95147	15	N8,N9,N11,N12,N17,N18/22	97295	1	N7,N8,N9,N13,N14,N16,N18,N26,N29,N32/22
94080	8	14,18,19,20,23,24,25/22	95148	9	N21/22*	97297	1	N18,N20,N30/22
94082	9	7,14,18,19,20,21,22,23,24,25/22	95149	12	N6,N7,N11,N13,N21,N22,N23,N26,N27,N31/22	97298	1	N17/22
94083	13	N7,N18,N19,N24/22	95151	20	N7,N11,N12,N13,N23,N31/22	97302	1	N18/22
94084	2	N7,N24/22	95152	7	N8,N11,N13,N24,25/22	97311	1	N12,N13/22
94120	7	15,20,23/22	95153	4	N22,N23,N27,N31/22	97319	5	N30,N31/22
94122	8	N23/22	95155	1	N8,N9,N26,N29/22	97321	5	N24*,N29,N30,N31/22
94123	10	N15,N18,N20/22	95159	1	N9,N16,N19/22	97322	2	N29,N30,N31/22
94124	15	N9,N15,N25,N30/22	95160	15	N6,N7,N8,N22/22	97330	1	N18/22
94160	9	9,12,15,18,20,27/22	95161	20	N16*,N24,N25,N26,N29,N32/22	97333	1	N27/22
94164	3	N9,N12,N18,N20,N27/22	95162	4	N9/22	97351	1	N5,N8/22
94165	5	N12,N27/22	95163	4	N9,N12,N16,N19/22	97362	1	N14/22
94180	10	5,7,8,10,11,13,14,15,16,20,21,23,26/22	95167	13	N8,N12,N19/22	97370	1	N5,N6,N21,N22/22
94203	11	N5,N7,N8,N9,N10,N11,N12,N13,N16,N17,N18,N19,N20,N21,N22,N23,N25,N26,N32/22	95173	3	N8,N10,N11,N13,N14,N22,N23,N24,N25,N26/22	97371	2	N5,N6,N22,N29/22
94216	10	N21*,N27/22	95174	2	N8,N24/22	97373	1	N21,N22/22
94217	7	N8,N11,N12/22	95176	2	5,6,7,8/22	97380	7	16,23,32/22
94218	6	N8,N12/22	95180	13	N8,N13,N19,N22/22	97381	7	27/22
94219	3	N5,N6,N13/22	95257	2	N12/22	97385	11	5/22
94220	5	5,9,11,12,13,14,15,16,20,21,25,27/22	95289	1	N25/22	97390	6	N5,N14,N16/22
94282	10	N30,N31/22	95339	2	N30/22	97392	6	N32/22
94283	9	N14,N30,N31/22	95341	9	N30,N31/22	97396	15	N23,N32/22
94287	2	31/22	96041	12	N8,N12,N18,N29/22	97397	8	N14,N32/22
94290	3	30,31/22	96042	12	N18,N29/22	97420	17	13,14,23/22
94380	5	N14,N17/22	96043	9	N9/22	97425	7	N13,N14,N23/22
94420	4	12,15/22	96044	11	N8,N9/22	97440	8	5/22
94421	11	12,15/22	96933	2	N22/22*	97460	7	6,21/22
94423	13	N11/22	96944	6	13,18,19/22	97461	10	N6,N21/22
94427	2	N11/22	96949	21	25/22	97471	6	N22/22
95054	1	N8,N19/22	96951	3	N8/22	97472	8	8/22
95060	15	N7,N8,N12,N13,N15,N18,N25/22	96962	4	8/22	97480	9	10,16,23/22
95065	8	N8,N12,N13,N19/22	97005	9	7/22	97483	7	10,11,12,16/22
95066	14	N7,N8,N11,N12,N13,N15,N16,N18,N19,N22,N23,N24,N25,N27,N29/22	97021	8	32/22	97567	1	N18/22
95067	17	N9,N11,N13,N15,N16,N17,N24/22	97022	2	N31/22	801329	1	N27/22*
95068	4	N23,N28,N31/22	97029	3	8/22	801379	1	N32/22*
95080	15	N7,N9,N12,N13,N14,N15,N16,N22,N26,N30,N32/22	97030	3	N25,N31/22	802123	1	N8/22*
95082	11	N12,N13,N14,N15,N16,N20,N23,N32/22	97034	2	N18,N25/22	802140	1	N14/22*
95083	10	N12,N13,N14,N15,N20,N22,N23,N32/22	97040	5	7/22	802158	1	N20/22*
95084	9	N14*,N21,N32/22	97044	5	N12,N16,N23/22	802191	1	N23/22*
95085	6	N9,N21/22	97050	2	N7,N12,N15/22	803325	1	N15/22*
95087	5	N13,N14,N32/22	97080	6	7/22	803335	1	N30/22*
95100	13	6,7,8,9,11,12,13,14,15,18,19,24,25,26,27,29,30,31,32/22	97089	2	N25/22	803382	1	N18/22*
95101	9	N7,N8,N14,N15,N16,N18,N19,N21,N24,N25,N26,N27,N29,N30,N31,N32/22	97140	17	8/22	803408	2	N30/22*
95102	9	N6,N7,N8,N13,N14,N15,N18,N19,N26,N28,N29,N30,N31,N32/22	97159	6	8/22	803429	2	N29/22*
95103	10	N8,N11,N12,N14,N16,N18,N24,N29,N32/22	97166	2	N8/22	803453	2	N27/22*
95120	10	N12/22	97167	3	8/22	803618	2	N29/22*
95136	2	N7,N22,N26,N27,N31/22	97180	7	N25/22	805400	1	N7/22*
95138	10	N11,N22,N26,N27,N29/22	97191	1	N7,N8,N16,N17,N18,N19,N21,N26,N31,N32/22	805429	1	N12/22*
95140	17	N6,N7,N8,N11,N12,N14,N22,N26,N30,N31/22	97197	1	N11,N23/22	806240	1	N25/22*
95141	9	N8,N11,N13,N26,N27,N29,N30,N31,N32/22	97198	1	N6,N7,N16,N17,N18,N21,N23,N26,N32/22	806263	1	N12/22*
95143	13	N5,N6,N8,N11,N22,N26,N27,N29,N31/22	97200	9	6,7,8,11,16,17,18/22	806266	1	N29/22*
95144	11	N5,N6,N7,N8,N9,N11,N12,N16,N25,N30,N31,N32/22	97210	1	N7,N16,N17,N18,N21,N26,N32/22	806931	1	N7/22*
95146	17	N6,N7,N8,N9,N11,N21,N25,N26/22	97212	1	N11,N12,N25/22	806941	2	N10/22*
			97213	2	N11,N12,N20,N23,N30/22	809108	1	N7/22*
			97222	12	15,18,23/22	809545	1	N10/22*
			97224	6	13,14,16/22			
			97232	9	6,7,8,16,17,21/22			
			97239	10	8,9,13,14/22			
			97245	11	12/22			
			97252	2	N6,N7,N8,N13,N14,N25,N26,N32/22			
			97253	2	N6,N11,N25,N31/22			
			97266	6	N7,N8,N9,N13,N14,N16,N18,N21,N25,N26,N32/22			
			97271	12	23/22			
			97273	11	10/22			
			97278	12	12,14,26/22			
			97293	2	N7,N8,N9,N14,N16,N21,N24,N25,N30,N32/22			
			97294	1	N7,N8,N9,N13,N14,N16,N21,N25,N26,N29,N32/22			

MARINE INFORMATION

NGA DIGITAL NAUTICAL PUBLICATIONS - QUARTERLY UPDATE

The Digital Nautical Publications-Quarterly Update (Limited Distribution), Second Quarter 2022, is ready for issue. The publications within are corrected to 25 June 2022, including Notice to Mariners No. 26 of 2022. The Digital Nautical Publications-Quarterly Update is now issued in DVD-ROM format.

The production schedule of Digital Nautical Publications-Quarterly Update coincides with the production schedule of the quarterly Notice to Mariners issues, namely 13, 26, 39, and 52 or 53 of each year.

The DVD-ROM contains updated copies of NGA nautical publications, including all 42 Sailing Directions Enroute/Planning Guides, The American Practical Navigator (Pub. 9)*, International Code of Signals (Pub. 102), Radio Navigational Aids (Pub. 117)*, World Port Index (Pub. 150), Distances Between Ports (Pub. 151)*, Radar Navigation and Maneuvering Board Manual (Pub. 1310)*, Sight Reduction Tables for Marine Navigation (Pub. 229)*, Sight Reduction Tables for Air Navigation (Pub. 249)*, Fleet Guides (Pub. 940 and Pub. 941), the Summary of Corrections, List of Lights*, Atlas of Pilot Charts, Chart No.1, Notice to Mariners issues 1/2022 through 26/2022, including the associated high-resolution graphic correction files for printing, United States Coast Pilot Series*, NOAA Tide Tables and Tidal Current Tables*, NWS Observing Handbook No. 1, USCG Light List Volumes*, USCG Navigation Rules and Regulations Handbook*, ONI MODU Handbook, Admiralty Sailing Directions NP24 (Black Sea and Sea of Azov Pilot), and Admiralty Rapid Sight Reduction Table AP3270(1).

This disk also includes the Nautical Calculators, digital Chart/Publication Correction Record Cards and hyperlinks to the Web sites of various maritime organizations.

* Those publications marked by an asterisk are still updated via textual corrections published in the weekly Notice to Mariners. Where applicable, the copies of these publications included on the DVD are updated to Notice to Mariners 26/2022, but it is the user's responsibility to examine the Notice to Mariners for corrections between quarters accordingly.

It is important to note that this product is issued and updated quarterly and users must still refer to the Maritime Safety Web site at <https://msi.nga.mil> or updates between issues. NGA also offers an e-mail subscription service for Publication Updates, which automatically delivers notification of publication updates as well as announcements of new editions of publications. To subscribe, visit the publication updates subscription page (<https://msi.nga.mil/subscribe?type=pubUpdates>). A confirmation e-mail will be sent to the requesting e-mail address from NGA's service provider. Instructions for discontinuing the subscription service are included in each e-mail.

DoD, U.S. Coast Guard, or any other Executive Branch Agency subscribers of Digital Nautical Publications who have not yet received a copy should contact the Defense Logistics Agency Customer Support at:

Defense Logistics Agency for Aviation Mapping Customer Operations
(DLA Aviation-QAM)
8000 Jefferson Davis Highway
Richmond, VA 23297-5339

Telephone: 804-279-6500

DSN: 695-6500

Toll Free: 800-826-0342

Web site: <http://www.dla.mil/Aviation/Offers/Products/Mapping.aspx>

MARINE INFORMATION REPORT AND SUGGESTION SHEET INSTRUCTIONS

We value your suggestions to improve our products. The Marine Information Report and Suggestion Sheet is provided for users to submit corrective information. Please be complete and accurate in your description/suggestion and include the information as detailed below:

Observer: name(s) of person(s) making observation and rank, rate or title.

Ship/Organization: name of vessel or organization.

Address: complete mailing address. Also include telephone number, fax, and/or e-mail address, if available, in case clarification is required.

Date of Observation: day, month and year at which the observation was made.

Time of Observation: local time at which the observation was made.

Latitude/Longitude: exact position of the observation expressed as accurately as possible.

Datum: horizontal datum to which the observed position is referred (e.g. WGS, NAD83, local foreign datum, etc.).

Navigation System: method used to determine the position of the observation (e.g. radar, GPS, Loran, etc.).

Include details about the equipment used, if deemed pertinent.

Verified by Navigator: indicate whether observation was verified by navigator.

Product(s) Affected: product number(s) and/or name(s) to which the observation applies (e.g. Chart 62400, Sailing Directions Pub. 127, etc.).

Edition: edition number and/or year of affected product.

Latest correction applied: the latest Notice to Mariners to which your copy of affected product has been corrected.

Sounding sensor or method used: equipment or method used to collect soundings. When reporting soundings, please provide an annotated echogram, if available, for verification.

Soundings corrected for draft: indicate whether soundings have been corrected for vessel's draft. If not, please include observed draft along with the details of information reported.

Details of Information Reported: use this space to provide details of the observation/suggestion. When referring to a charted feature, please describe it exactly as it appears on the chart. When referring to a publication, please indicate page number(s) and line number(s) or station number(s) as applicable. Use additional sheets as necessary and include diagrams, photocopies of the product(s) involved and/or photographs to describe observations in greater detail. If possible, include the designation, point of contact, telephone number, fax number and/or e-mail address of the local port authority to enable NGA to update our records and obtain additional or later information.

User Feedback: use this space to provide feedback and suggestions for improving NGA products and services.

Please detach, fold and mail the pre-addressed form and include any other relevant material or supporting information.

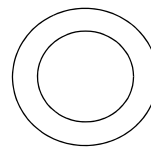
Reports which present an immediate hazard to navigation should be sent to the nearest NAVAREA Coordinator via coast radio stations. In general, these hazards would include major aids to navigation anomalies, discovery of obstructions or shoals with depths of less than 30 meters, floating dangers to shipping, and any situation deemed critical to safety of life at sea. For further information consult Notice to Mariners No. 1, paragraph 43 (Worldwide Navigational Warning Service).

Due to the large volume of information received, NGA cannot acknowledge receipt of every report. Some reports containing useful data are filed for use in the compilation of the next edition of the affected product. Others confirm or clarify previously reported information. Echogram traces are digitized and become part of our Bathymetric Database. Acknowledgment is made by inclusion in the Observer's List of the Notice to Mariners (page ii), or in some cases by letter from the Agency involved.

For additional information about various Hydrographic Reports, consult The American Practical Navigator (Chapter 31).



**MARITIME SAFETY OFFICE
MAIL STOP N64-SH
NATIONAL GEOSPATIAL-INTELLIGENCE AGENCY
7500 GEOINT DRIVE
SPRINGFIELD, VA 22150-7500**



FIRST-CLASS MAIL
POSTAGE & FEES PAID
NGA
PERMIT NO. G-2

HYDROARC REPORT SHEET

Observer _____

Ship/Organization _____

Phone _____ Email Address _____

Describe Hazard (e.g. dredge, buoy, current meter, operations): _____

Is hazard remotely monitored? Yes _____ No _____

If yes, list Internet URL where most recent position will be posted (if any): _____

Depth water column is occupied (e.g. "bottom to surface", "surface to 500m"): _____

Date of Insertion _____ Latitude _____ Longitude _____

Date of Expected Removal _____

Most Recent Observation: Date _____ Time (Local) _____

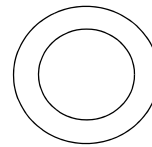
Latitude _____ Longitude _____ Datum _____

Navigation System _____ Verified by Navigator: Yes _____ No _____

Sounding sensor or method used _____

Sounding(s) corrected for draft: Yes _____ No _____

Details of Information Reported (continue on additional sheets as necessary): _____

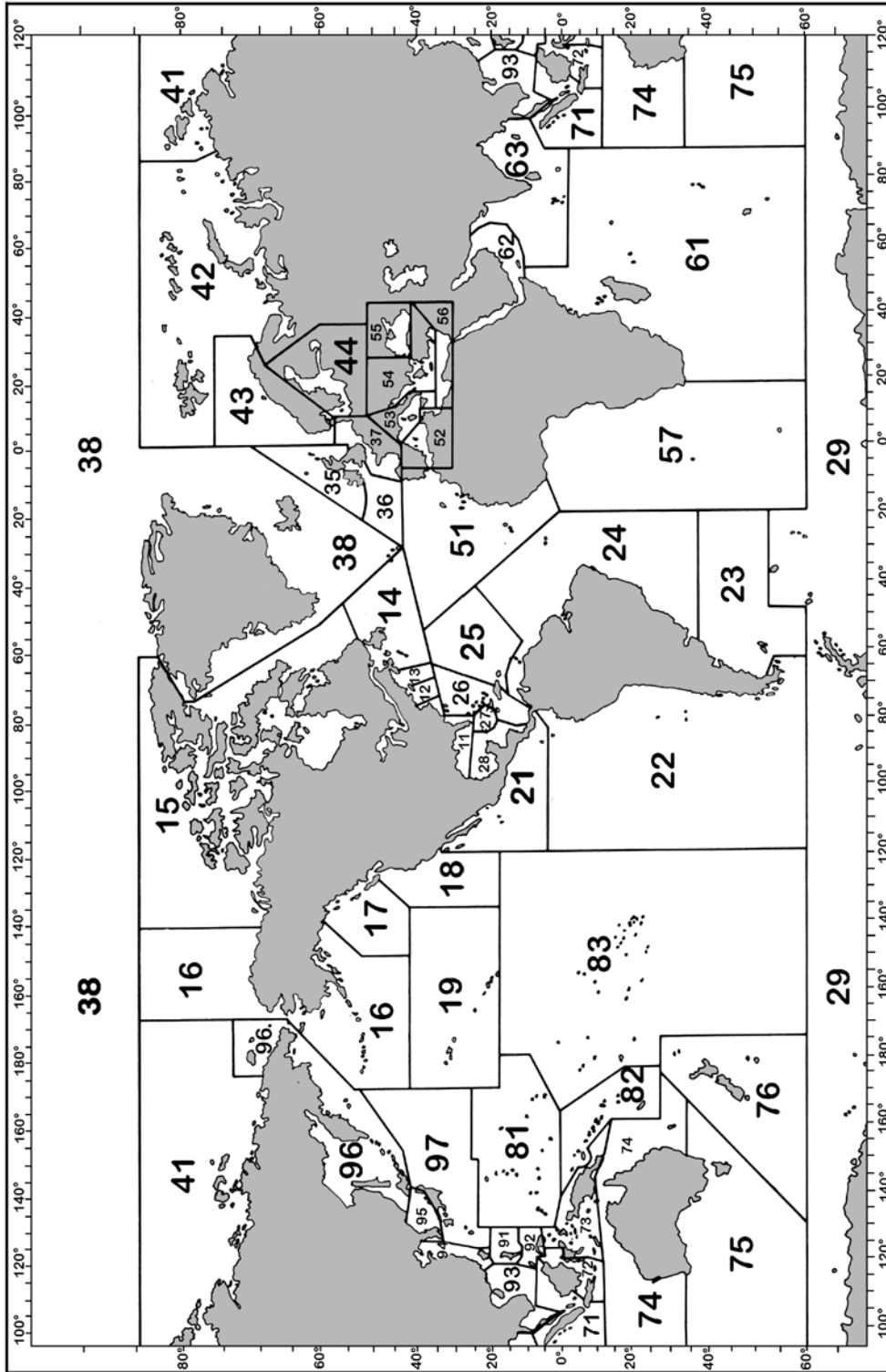


FIRST-CLASS MAIL
POSTAGE & FEES PAID
NGA
PERMIT NO. G-2



**MARITIME SAFETY OFFICE
MAIL STOP N64-SH
NATIONAL GEOSPATIAL-INTELLIGENCE AGENCY
7500 GEOINT DRIVE
SPRINGFIELD, VA 22150-7500**

GEOGRAPHIC LOCATOR



For chart numbering purposes, the world is divided into nine regions, each corresponding to the geographic limits of one of the nine regions in the NGA/DLIS Catalog of Maps Charts and Related Products. Each Region is further subdivided into the numbered Subregions in the above graphic. The first two digits of all five-digit chart numbers indicate the geographic subregion to which the chart pertains. Users can locate corrections in this Notice for charts of their immediate interest by determining the two-digit Subregion number of the pertinent geographic area, and then turning to the page or pages that list the chart numbers beginning with those two digits.

IMPORTANT
NAVIGATIONAL INFORMATION
TIME—DATED



**NOTICE TO
MARINERS**

PLEASE EXPEDITE DELIVERY