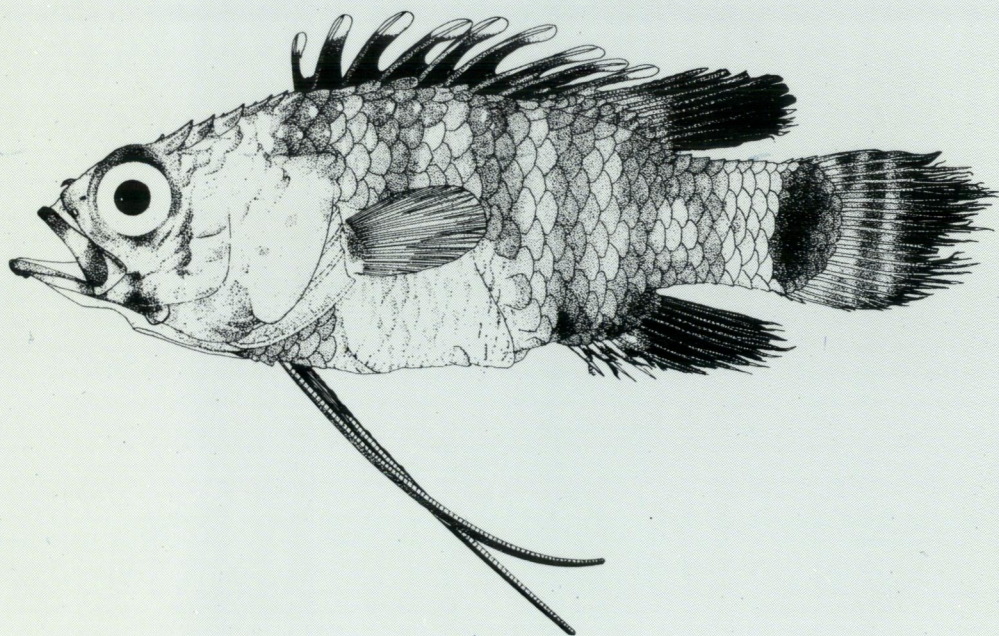


*Records of the Western Australian Museum*  
Supplement No. 38

# A Catalogue of Type Specimens of Fishes in the Western Australian Museum

**J.B. HUTCHINS & K.N. SMITH**



**A CATALOGUE OF TYPE SPECIMENS OF FISHES  
IN THE WESTERN AUSTRALIAN MUSEUM**

*Records of the Western Australian Museum*  
Supplement No. 38

---

**A CATALOGUE OF  
TYPE SPECIMENS OF FISHES IN  
THE WESTERN AUSTRALIAN MUSEUM**

---

J.B. HUTCHINS, K.N. SMITH  
Western Australian Museum, Francis Street, Perth, Western Australia 6000

Western Australian Museum  
1991

*Cover:*     *Steeneichthys pleiopsus* Allen and Randall, 1985, holotype (illustrated by R. Swainston).

*Rec. West. Aust. Mus. Suppl. no. 39*  
©Western Australian Museum, 1991

ISSN O 313 122X  
ISBN O 7309 4652 5

Published by the Western Australian Museum, Francis Street, Perth,  
Western Australia 6000.

# A catalogue of type specimens of fishes in the Western Australian Museum

J. Barry Hutchins\* and Kevin N. Smith\*

## Abstract

The fish collection at the Western Australian Museum contains type specimens of 400 species, of which 217 are primary types. A complete checklist is presented, including relevant data on the current status of this material and a full bibliography.

## Introduction

The Western Australian Museum's fish collection was commenced in 1896 as part of a larger multidisciplinary collection. Although the accession of specimens was at first slow, the fish collection has since grown into an extensive assemblage of almost 120,000 registered specimens. This is reflected in the number of type specimens, now representing a total of 400 species, of which 217 are primary types. Furthermore, over 70 manuscript names for specimens housed at the Western Australian Museum are currently awaiting publication. It seems timely, therefore, to report the current state of this rapidly growing type collection.

Although the first descriptions of new fish species in the collections of the Western Australian Museum were published as long ago as 1905, the period of greatest activity has been in the years since 1974 when the new Department of Fishes was created. Prior to this, the responsibility for fishes had been overseen by various curators whose main interests lay with other vertebrate and invertebrate groups (see historical section below). Furthermore, the department has recently acquired a new title, namely the Department of Aquatic Vertebrates, although its primary responsibility still lies with the extant members of Pisces.

Prior to this catalogue, lists of fish types in the Western Australian Museum had been published on two occasions (McKay, 1965, 1966a). These include only primary types, covering a total of 53 species. The present inventory lists all 400 species, and comprises both primary and secondary types. Reference is also made to some supposed type specimens which are here considered to be invalid.

The order of presentation is based on Paxton *et al.* (1989). In addition, the reader is referred to this publication for supplementary information on the fish families in the Australian region up to and including the Carangidae. The remaining families will be covered in a second volume currently in preparation by the same authors.

The following abbreviations are used in the text: c/s — cleared and stained; NSW — New South Wales; NT — Northern Territory; PNG — Papua New Guinea; Qld — Queensland; SA — South Australia; skel. — skeletal material; SL — Standard length;

---

\*Western Australian Museum, Francis Street, Perth, Western Australia 6000.

Tas — Tasmania; TL — Total length; Vic — Victoria; WA — Western Australia. Institutions are abbreviated as recommended by Leviton *et al.* (1985).

### History of the Western Australian Museum's Fish Collection

The collections of the Western Australian Museum were initiated in 1896 by the first curator, B.H. Woodward. Over the next decade and a half, a growing number of natural history specimens was accessioned into the collection employing various catalogues. These included the Western Australian Museum Register (1896 to 1900), the Taxidermists Book (1900 to 1907), the Zoological Register (1907 to 1912), and the Catalogue of the Museum (1896 to 1912) (a register of specimens on display). The fishes registered in these catalogues were each given a single number, some of which were preceded by the letter "U". A separate fish catalogue was eventually commenced in 1912 by the then assistant in natural history, W.B. Alexander. All numbers in this catalogue were prefixed by the letter "P" (abbreviation for Pisces), a system which is still in use today. Much of the fish material that was registered prior to 1912 has since been reregistered using the "P" numbering system, and none of the earlier numbers is now recognised.

In 1974, a refinement to Alexander's system was introduced by the first curator to be wholly responsible for fishes, G.R. Allen. This incorporated a method of registration jointly developed by the fish departments at the Australian Museum and the Natural History Museum of Los Angeles County. Instead of allocating a separate number for each specimen, as was previously the case, all taxa with identical collection data are given the same "P" number. Each separate species is then distinguished by the addition of a different suffix in the form of "-001", "-002", etc. Thus the "P" number component is a station or lot number which is further broken down into species numbers by the addition of suffixes. The number of individuals of each species and their size range are also recorded. Additional suffixes can be added when, for example, future studies show that specimens of two species were incorrectly lumped under the one species number. Specimens catalogued prior to 1974 have been incorporated into this system by, in most cases, the addition of "-001" (e.g. P.3442 is now P.3442-001). Therefore, in the list of type specimens presented below, each registration number includes a suffix, even though it may have originally been cited without this addition.

The collecting and subsequent accession of fish specimens for the Western Australian Museum collections can be divided into several periods. These are listed below, including the Western Australian Museum staff responsible and the dates for each period.

1. B.H. Woodward — 1896 to 1912.
2. W.B. Alexander — 1912 to 1920.
3. L. Glauert — 1916 to 1957.
4. G.F. Mees — 1958 to 1963.
5. R.J. McKay — 1964 to 1972.
6. J.B. Hutchins — 1972 to present.
7. G.R. Allen — 1974 to present.

Most fish specimens are stored in glass jars in 70% ethanol, although larger specimens are kept in either plastic polydrums or fibreglass vats. Some skeletal and cleared and

stained material is also present, in addition to several mounted skins.

The majority of the collection is comprised of Western Australian material, both marine and freshwater, but prominent numbers of freshwater species from Australia and Papua New Guinea are also present. Coral reef species from the Indo-West Pacific region are well represented, as is the inshore trawl-caught fauna of the state. In addition, a small but growing number of deeper water fishes from off the edge of the continental shelf have been added to the collection since 1978.

### Waite Types

The first fish types deposited at the Western Australian Museum were 10 specimens representing nine species described by Waite (1905) from Western Australian Museum material, namely *Catulus labiosus*, *Dipulus caecus*, *Synodus sageneus*, *Bramichthys woodwardi*, *Neatypus obliquus*, *Chaetodon assarius*, *Cynoglossus broadhursti*, *Chaetodermis maccullochi*, and *Pseudomonacanthus galii*. However, confusion still exists concerning the whereabouts of some of these specimens. In 1904, the then Director of the Western Australian Museum, B.H. Woodward, sent two lots of specimens to the Australian Museum for identification. E.R. Waite, who was the Curator of Fishes at the latter institution, identified most of the material, noting that some species appeared to be new (in litt.). These were subsequently described in 1905 and supposedly returned that same year (a partial list of the specimens that were returned, including the types of four species, is on file at the Western Australian Museum). At least two syntypes were retained by the Australian Museum. What happened to the remaining types on their return to the Western Australian Museum, however, is open to question. Most of the specimens had originally been registered in the Taxidermists Book (see historical section above) before the loans were sent to the Australian Museum (numbers 6808-6827 for the first lot, 7018-7034 for the second lot), and some of these numbers are mentioned in correspondence between Waite and Woodward. Apparently the types of the species described by Waite were subsequently registered again in the Catalogue of the Museum (a register of specimens on display), but not labelled as types. These registrations could not have been done on the immediate return of the specimens as they are scattered throughout the register. In 1965, R.J. McKay, while attempting to organize a type collection of Western Australian Museum fishes, reregistered these specimens in the Fish Catalogue, noting the new "P" numbers in the old Catalogue of the Museum. However, it appears that some of these may not have been Waite's types (see account of *Catulus labiosus* below). Also the inclusion by McKay of the supposed type of *Hoplegnathus woodwardi* (Waite, 1900) in this 1965 listing is obviously an error as the type is still at the Australian Museum (AMS I.4215, M. McGrouther, pers. com.). Furthermore several of these specimens are now missing and must be presumed to be lost (see accounts of *Cynoglossus broadhursti* and *Neatypus obliquus* below). Unfortunately there is little information to help clear up these problems.

### Endeavour Collection

In April 1910, August 1911, September 1913, and February 1915, portions of the fish collections made by the FIS Endeavour, which at the time was conducting trawling

operations off Australia's southern coastline, were deposited at the Western Australian Museum. Much of this Endeavour material formed the basis of descriptions by McCulloch (1911, 1914a, 1915), many of which involved new species. However, even though numerous specimens were entered in the Western Australian Museum catalogues as "co-types", much of the evidence suggests that only two of the nine listed types are valid (according to an introductory note to Vol. 1 of the "Endeavour Results", all types and a set of "co-types" were retained by the Australian Museum; the remaining specimens were distributed to other Australasian state museums). The valid types are *Caranx humerosus* McCulloch, 1915 and *Pempheris elongata* McCulloch, 1911. The remaining specimens appear to represent some of the additional nontype material referred to in the relevant descriptions by McCulloch (1914a). Following is a list of these supposed types, preceded by their Western Australian Museum registration number and followed by their Endeavour number (*Caranx humerosus* and *Pempheris elongata* are treated in the main body of the checklist):

P.57-001, *Plagiogeneion macrolepis* McCulloch, 1914a, 2 specimens, 209 and 213 mm SL, E.2332 and E.2406.

P.60-001, *Insidiator harrisii* McCulloch, 1914a, 130 mm SL, E.3240.

P.65-001, *Polyipnus tridentifer* McCulloch, 1914a, 3 specimens, 53-63 mm SL, E.3543.

P.68-001, *Insidiator jugosus* McCulloch, 1914a, 3 specimens, 126-172 mm SL, E.2597.

P.71-001, *Centriscops cristatus* McCulloch, 1914a, 2 specimens, 226-227 mm SL, E.2151.

P.73-001, *Allocyttus verrucosus propinquus* McCulloch, 1914a, 250 mm SL, E.3281.

P.274-001, *Hoplostethus mediterraneus latus* McCulloch, 1914a, 71 mm SL, E.2467.

#### Lost and missing types

Despite exhaustive searches and numerous requests to other institutions, some type material could not be found. This is listed in the relevant species accounts. The situation concerning the Terapontidae, however, necessitates a special mention. Seven holotypes were loaned during the late 1970's to a PhD student (J. Merrick at Macquarie University). Although many requests, including personal representations by others on behalf of the Western Australian Museum, were made for this material to be returned, all were ignored. The material was recently retrieved. Only two holotypes are extant; the remaining types had been allowed to deteriorate to such an extent that they are now totally useless.

### LIST OF TYPE SPECIMENS

#### Urolophidae

*Trygonoptera ovalis* Last and Gomon, 1987: 63, Figure 1.

Paratypes — P.27037-001, 151 mm disc width, Geographe Bay, WA; P.27285-001, 160 mm disc width, Mandurah, WA; P.27585-002, 141 mm disc width, Houtman Abrolhos, WA.



*Trygonopectera personata* Last and Gomon, 1987: 65, Figure 2.

Paratypes — P.8194-001, 165 mm disc width, off Perth, WA; P.14104-001, 193 mm disc width, off Rottnest Island, WA; P.12034-001, 173 mm disc width, Shark Bay, WA.

*Urolophus circularis* McKay, 1966b: 69, Figures 2a, 2b.

Holotype — P.8191-001, 478 mm TL, off Carnac Island, WA.

*Urolophus lobatus* McKay, 1966b: 71.

Holotype — P.14133-001, 205 mm TL, off Rottnest Island, WA.

Paratypes — P.14120-001, 206 mm TL, P.14121-001, 201 mm TL, P.14122-001, 260 mm TL, P.14123-001, 225 mm TL, P.14124-001, 251 mm TL, P.14125-001, 188 mm TL, P.14126-001, 260 mm TL, P.14127-001, 202 mm TL, P.14129-001, 204 mm TL, P.14130-001, 250 mm TL, P.14131-001, 212 mm TL, P.14134-001, 223 mm TL, P.14135-001, 208 mm TL, P.14136-001, 197 mm TL, P.14137-001, 288 mm TL, P.14138-001, 239 mm TL, P.14140-001, 198 mm TL, all from off Rottnest Island, WA.

*Urolophus westraliensis* Last and Gomon, 1987: 72, Figure 6.

Paratypes — P.26193-006, 225 mm disc width, off Dampier, WA; P.26262-007, 182 mm disc width, off Buccaneer Archipelago, WA.

### Rajidae

*Pavoraja alleni* McEachran and Fechhelm, 1982: 8, Figures 7-8.

Holotype — P.19118-001, 297 mm TL, near Rowley Shoals, WA.

Paratypes — P.19117-001, 278 mm TL, near Rowley Shoals, WA; P.8226-001, 159 mm TL, eastern Indian Ocean.

### Torpedinidae

*Narcine westraliensis* McKay, 1966b: 73, Figures 3-6

Holotype — P.6963-001, 212 mm TL, Shark Bay, WA.

Paratypes — P.6946-001, 209 mm TL, P.6947-001, 176 mm TL, P.6948-001, 212 mm TL, P.6949-001, 190 mm TL, P.6950-001, 268 mm TL, P.6951-001, 203 mm TL, P.6952-001, 189 mm TL, P.6953-001, 184 mm TL, P.6954-001, 186 mm TL, P.6955-001, 174 mm TL, P.6956-001, 187 mm TL, P.6957-001, 180 mm TL, P.6958-001, 195 mm TL, P.6959-001, 200 mm TL, P.6960-001, 110 mm TL, P.6961-001, 182 mm TL, P.6962-001, 201 mm TL, P.6964-001, 207 mm TL, P.6965-001, 160 mm TL, P.6966-001, 195 mm TL, P.6967-001, 184 mm TL, P.6968-001, 193 mm TL, P.6969-001, 157 mm TL, P.6970-001, 202 mm TL, P.6971-001, 204 mm TL, P.6972-001, 180 mm TL, P.6973-001, 117 mm TL, P.6974-001, 195 mm TL, P.6975-001, 193 mm TL, P.6996-001, 182 mm TL, P.6997-001, 197 mm TL, P.6998-001, 190 mm TL, P.6999-001, 188 mm TL, P.7003-001, 196 mm TL, P.7004-001, 189 mm TL, P.7005-001, 190 mm TL, P.7009-001, 198 mm TL, P.7016-001, 222 mm TL, P.7018-001, 238 mm TL, P.7031-001, 220 mm TL, P.7033-001, 195 mm TL, P.7035-001, 194 mm TL, P.5027-001, 200 mm TL, all from Shark Bay, WA.

### Scyliorhinidae

*Catulus labiosus* Waite, 1905: 57, Figure 23.

Holotype — Uncatal., 620 mm TL, Fremantle, WA (missing, presumed lost).

Neotype — P.13253-001, 482 mm TL, no other data.

Remarks. A neotype was designated by Séret (1990) because of the confusion surrounding

the whereabouts of the holotype. The latter was originally sent to AMS where it was described and subsequently returned to WAM (see section on Waite types in Introduction). The specimen later referred to by numerous workers as the holotype (see Séret 1990 for references) was in fact selected by Whitley (1934) when he redescribed and illustrated the species. This specimen was subsequently catalogued in 1965 as P.13253, but apparently was not remeasured. As it is only 482 mm TL — Waite gave a length of 620 mm TL in the original description — we agree with Séret (1990) that this specimen cannot be the holotype. Even though we have located several old unlabelled specimens of this species at WAM, none matches the length given by Waite. Séret's designation of the second specimen as a neotype was, however, not justified as a nomenclatural problem was not involved (see Art. 75(b), International Code of Zoological Nomenclature). The species is now known as *Aulohalaelurus labiosus*.

### Carcharhinidae

*Fur ventralis* Whitley, 1944a: 397.

Holotype — P.2451-001, 1250 mm TL, off Bunbury, WA.

Paratype — P.26679-001, 1070 mm TL, Houtman Abrolhos, WA.

Remarks. The paratype consists of a mounted skin. This name is a junior synonym of *Furgaleus macki* (Whitley, 1943).

*Galeolamna (Galeolamnoides) eblis* Whitley, 1944a: 252, Figure 1.

Paratype — P.667-001, 935 mm TL, Coventry Reef, WA.

Remarks. The paratype consists of a set of jaws only. This name is a junior synonym of *Carcharhinus obscurus* (Lesueur, 1818).

*Galeolamna fowleri* Whitley, 1944a: 255, Figures 2, 2a.

Holotype — P.2503-001, South Muiron Island, WA.

Remarks. The holotype consists of a set of jaws only (see Garrick, 1982 for further details on the confusion surrounding this description). This name is a junior synonym of *Carcharhinus amblyrhynchos* (Bleeker, 1856).

*Longmania calamaria* Whitley, 1944a: 257, Figure 4.

Holotype — P.2526-001, off Busselton, WA (missing, presumed lost).

Remarks. According to Whitley (1944a), the holotype consisted of a head and tail only, but these cannot be found at WAM (see Garrick, 1982 for further details). This name is a synonym of *Carcharhinus brevipinna* (Müller and Henle, 1839).

### Ophichthidae

*Phyllophichthus macrurus* McKay, 1970: 4.

Holotype — P.4015-001, 465 mm TL, Kalgan River, WA.

Paratypes — P.16789-001, 401 mm TL, Shark Bay, WA; P.16790-001, 346 mm TL, Jurien Bay, WA.

*Scolecenchelys tasmaniensis smithi* Whitley, 1944a: 262.

Holotype — P.704-001, 275 mm TL, Geographe Bay, WA.

Paratype — P.1016-001, 350 mm TL, Rottnest Island, WA.

Remarks. This name is a junior synonym of *Muraenichthys tasmaniensis* McCulloch, 1911.

**Muraenidae**

*Gymnothorax woodwardi* McCulloch, 1912: 80, Figure 1.

Holotype — P.13263-001, 515 mm TL, Pelsart Island, WA.

**Congridae**

*Leptocephalus wilsoni hesperius* Whitley, 1944b: 25, Figure 1.

Holotype — P.2603-001, 464 mm TL, Leighton Beach, WA.

Remarks. This name is junior synonym of *Conger wilsoni* (Bloch and Schneider, 1801).

*Heteroconger perissodon* Böhlke and Randall, 1981: 377, Figures 1D, 4B, 5 middle, 7.

Paratype — P.26788-001, 324 mm TL, Ambon, Indonesia.

**Clupeidae**

*Herklotsichthys collettei* Wongratana, 1987: 105, Figures 1, 6.

Holotype — P.25464-004, 108 mm SL, Shark Bay, WA.

Paratypes — P.25464-002, 6 specimens 100-107 mm SL, Shark Bay, WA; P.22574-001, 98 mm SL, Shark Bay, WA; P.23870-001, 97 mm SL, Exmouth Gulf, WA; P.2544-001, 59 mm SL, P.2545-001, 67 mm SL, both from Onslow, WA; P.26667-001, 43 mm SL, Shark Bay, WA; P.27380-001, 91 mm SL, Shark Bay, WA.

*Fluvalosa bulleri* Whitley, 1948: 267.

Holotype — P.2945-001, 120 mm SL, Ord River, WA.

Remarks. This name is a junior synonym of *Nematalosa erebi* (Günther, 1868).

*Fluvalosa paracome* Whitley, 1948: 267.

Holotype — P.2619-001, 97 mm SL, Fitzroy River, WA.

Remarks. This name is a junior synonym of *Nematalosa erebi* (Günther, 1868).

**Engraulididae**

*Setipinna paxtoni* Wongratana, 1987: 109, Figures 5, 6.

Holotype — P.16267-001, 110 mm SL, Cambridge Gulf, WA.

Paratypes — P.16268-001, 80 mm SL, P.16269-001, 94 mm SL, P.16270-001, 109 mm SL, all from Cambridge Gulf, WA.

Remarks. The type description includes a typographical error: the holotype P.16267-100 should read P.16267-001.

**Galaxiidae**

*Galaxias pusillus nigrostriatus* Shipway, 1953: 175.

Holotype — P.3420-001, 28 mm SL, Marbellup creek, WA.

Remarks. Now known as *Galaxiella nigrostriata*.

*Galaxias truttaceus hesperius* Whitley, 1944a: 263.

Holotype — P.2580-001, 125 mm SL, Taylor's Inlet, WA.

Remarks. This name is a junior synonym of *G. truttaceus* Valenciennes, 1846.

*Galaxiella munda* McDowall, 1978: 119, Figure 1.

Holotype — P.25736-001, 38 mm SL, north of Scott River, WA.

Paratypes — P.5225-001, 39 specimens, 23-42 mm SL, collected with holotype.

Remarks. Other paratypes are deposited at AMS.

*Lepidogalaxias salamandroides* Mees, 1961: 33, Figure 1.

Holotype — P.4887-001, 49 mm SL, near Shannon River, WA.

Paratypes — P.4888-001, 3 specimens, 32-42 mm SL, near Shannon River, WA.

Remarks. Two paratypes are deposited in the Leiden Museum.

#### Cobitidae

*Cobitis aurata vallachica* Nalbant, 1957: 209, Figures 1-3.

Paratypes — P.5938-001, 4 specimens 42-60 mm SL, Ialomitza River, Romania.

Remarks. These specimens were deposited at WAM in 1964. Now known as *Sabanejewia aurata vallachica*.

#### Ariidae

*Arius coatesi* Kailola, 1990: 18, Figures 5, 6b.

Paratypes — P.28221-001, 4 specimens 290-390 mm SL, Angoram, PNG.

*Arius midgleyi* Kailola and Pierce, 1988: 75, Figures 1-8.

Paratypes — P.25597-001, 348 mm SL, Fitzroy River, WA; P.25708-001, 224 mm SL, Traine River, WA; P.28776-001, 166 mm SL, Lake Argyle, WA; P.21338-002, 4 specimens 133-161 mm SL, Ord River, WA.

*Arius utarus* Kailola, 1990: 12, Figures 4, 6a.

Paratypes — P.28224-001, 252 mm SL, Sepik River, PNG; P.27846-001, 4 specimens 97-133 mm SL, Sepik River, PNG; P.27847-010, 7 specimens 84-118 mm SL, Kwatit River, PNG.

#### Plotosidae

*Oloplotosus torobo* Allen, 1985a: 248, Figure 1.

Holotype — P.28158-003, 173 mm SL, Lake Kutubu, PNG.

*Tandanus bostocki* Whitley, 1944a: 260.

Holotype — P.241-001, 370 mm SL, Serpentine, WA (invalid designation).

Remarks. Whitley (1944) proposed *Tandanus bostocki* as a replacement name for *Plotosus unicolor* Castelnau, 1873 (preoccupied by *P. unicolor* Valenciennes, 1840), a species described from WA. Whitley presented a redescription of the species and nominated one of his specimens as the holotype. Even though the whereabouts of the two syntypes of Castelnau's *P. unicolor* is unknown (Paxton *et al.*, 1989), they are nevertheless still the types of *T. bostocki*. Therefore the holotype listed above has no validity.

*Tandanus coatesi* Allen, 1985a: 252, Figure 3.

Holotype — P.27839-007, 140 mm SL, Ninar River, PNG.

Paratypes — P.27839-005, 50 specimens 36-113 mm SL, Ninar River, PNG; P.27840-005, 68 mm SL, Wongol Stream, PNG.

#### Synodontidae

*Synodus sageneus* Waite, 1905: 58, Pl. 8, Figure 1.

Holotype — P.13254-001, 246 mm SL, between Fremantle and the Houtman Abrolhos, WA.

Remarks. Two recent papers incorrectly list the holotype as P.25509-001 (Cressey, 1981; Paxton *et al.*, 1989). Unfortunately this number was mistakenly allocated to the type in 1976 as the specimen appeared at the time to be unregistered (a paper label attached to the

specimen had disintegrated). The correct registration number, as reported by McKay (1966a), is cited above.

### Batrachoididae

*Batrachoides waltersi* Collette and Russo, 1981: 208, Figure 5.

Paratypes — P.26494-001, 2 specimens, 72-84 mm SL, La Venadona, El Salvador.

Remarks. The type description includes a typographical error: paratypes P.2649-001 should read P.26494-001.

*Batrachomoeus occidentalis* Hutchins, 1976: 23, Figures 3b, 9, 10.

Holotype — P.23702-001, 169 mm SL, Exmouth Gulf, WA.

Paratypes — P.9343-001, 32 mm SL, no other data; P.23876-001, 113 mm SL, off North West Cape, WA; P.23877-001, 131 mm SL (skel.), off North West Cape, WA; P.25091-001, 32 mm SL, off Green Head, WA; P.25092-001, 33 mm SL, off Rottneest Island, WA; P.25093-001, 2 specimens, 73-104 mm SL, off Rottneest Island, WA.

Remarks. Other paratypes also deposited at AMS and BMNH.

*Batrachomoeus rubricephalus* Hutchins, 1976: 30, Figures 12, 14b.

Holotype — P.25082-001, 211 mm SL, off Garden Island, WA.

Paratypes — P.159-001, 196 mm SL (skel.), Eucla, WA; P.1195-001, 232 mm SL, Point Peron, WA; P.4003-001, 262 mm SL, Rottneest Island, WA; P.4292-001, 203 mm SL, near Perth, WA; P.5792-001, 191 mm SL, Safety Bay, WA; P.6092-001, 214 mm SL, Cervantes, WA; P.7120-001, 256 mm SL, Lancelin, WA; P.7122-001, 236 mm SL, Shoalwater Bay, WA; P.7198-001, 256 mm SL, Marmion Beach, WA; P.14788-001, 193 mm SL, Houtman Abrolhos, WA; P.25083-001, 222 mm (skel.), Recherche Archipelago, WA; P.25123-001, 111 mm SL, Cliff Head, WA.

Remarks. Other paratypes also deposited at AMS and BMNH.

*Halophryne ocellatus* Hutchins, 1974: 115, Figures 1, 2a, 3a.

Holotype — P.5956-001, 190 mm SL, Houtman Abrolhos, WA.

Paratypes — P.3364-001, 138 mm SL, Houtman Abrolhos, WA; P.5851-001, 2 specimens, 109-127 mm SL, Shark Bay, WA; P.5955-001, 102 mm SL, Shark Bay, WA; P.6149-001, 136 mm SL, Dirk Hartog Island, WA; P.6260-001, 130 mm SL, Shark Bay, WA; P.7148-001, 47 mm SL, Dampier Archipelago, WA; P.9393-001, 43 mm SL, P.9394-001, 45 mm SL, and P.12073-001, 38 mm SL, all from Exmouth Gulf, WA; P.13767-001, 75 mm SL, P.13768-001, 98 mm SL, P.13769-001, 98 mm SL, P.14653-001, 101 mm SL, P.14833-001, 124 mm SL, all from Shark Bay, WA; P.16296-001, 102 mm SL, Exmouth Gulf, WA; P.16483-001, 88 mm SL, Broome, WA; P.23604-001, 99 mm SL, off Carnarvon, WA; P.24562-001, 101 mm SL, off Onslow, WA; P.24829-001, 231 mm SL, Kalbarri, WA; P.24830-001, 23 mm SL, off Carnarvon, WA.

### Antennariidae

*Echinophryne glauerti* Whitley, 1944a: 272.

Holotype — P.1459-001, 131 mm SL, Cottesloe, WA.

Paratype — P.1232-001, 60 mm SL, Cottesloe, WA.

Remarks. Now known as *Allenichthys glauerti*.

*Cheironectes trisignatus* Richardson, 1844: 15, Pl. 9, Figure 1.

Neotype — P.27274-013, 74 mm SL, Broome, WA.

Remarks. Pietsch and Grobecker (1987) designated a neotype because of the confusion between this species — for which the type has been lost — and *C. caudimaculatus* Rüppell, 1829 (= *Antennarius commersoni* (Latreille, 1804)). Now known as *Lophiocharon trisignatus*.

*Rhycherus gloveri* Pietsch, 1984: 70, Figures 2, 3B, 4.

Paratypes — P.2315-001, 87 mm SL, Cottesloe Beach, WA; P.3114-001, 115 mm SL, North Beach, WA; P.5814-001, 103 mm SL, Warnbro Beach, WA; P.12111-001, 111 mm SL, Ledge Point, WA; P.24867-001, 100 mm SL, Coogee Beach, WA.

#### Moridae

*Eeyorius hutchinsi* Paulin, 1986: 204, Figure 2.

Holotype — P.27128-001, 194 mm SL, Port Phillip Bay, Vic.

Paratypes — P.27123-001, 105 mm SL, Wilsons Promontory, Vic.; P.27126-001, 2 specimens, 87-209 mm SL, Wilsons Promontory, Vic.; P.27545-001, 178 mm SL, Esperance Point, Tas.; P.27545-002, 3 specimens, 89-180 mm SL, Esperance Point, Tas.; P.27549-006, 245 mm SL, Port Arthur, Tas.; P.27564-003, 183 mm SL, Bridport, Tas.; P.27616-003, 160 mm SL, Rottnest Island, WA; P.25781-001, 145 mm SL, Rottnest Island, WA.

#### Ophiidiidae

*Sirembo metachroma* Cohen and Robins, 1986: 253, Pls 1A, 1B.

Paratype — P.25739-005, 140 mm SL, off Cape Moreton, Qld.

#### Bythitidae

*Dinematichthys dasyrhynchus* Cohen and Hutchins, 1982: 342, Figures 1-3.

Holotype — P.26614-010, 88 mm SL, Rottnest Island, WA.

Paratypes — P.25725-017, 2 specimens, 102 mm SL, P.25781-013, 99 mm SL, P.26616-009, 5 specimens, 57-116 mm SL, P.26619-015, 2 specimens, 111-121 mm SL, P.26620-010, 2 specimens, 84-119 mm SL, P.27146-001, 2 specimens, 57-119 mm SL, P.4683-001, 94 mm SL, all from Rottnest Island, WA.

*Dipulus caecus* Waite, 1905: 78, Pl. 11, Figure 2.

Holotype — P.13261-001, 152 mm SL, off Fremantle, WA.

#### Hemiramphidae

*Zenarchopterus ornithocephala* Collette, 1985: 107, Figure 2.

Paratype — P.27868-004, 94 mm SL, Senopi, Irian Jaya.

#### Melanotaeniidae

*Chilatherina axelrodi* Allen, 1979: 48, Figure.

Holotype — P.26739-001, 81 mm SL, Pual River system, PNG.

Paratypes — P.26739-002, 22 specimens, 35-85 mm SL, Pual River system, PNG.

*Chilatherina bleheri* Allen, 1985b: 54, Figures 1, 2, 3.

Paratypes — P.27869-001, 30 specimens, 24-84 mm SL, P.27870-001, 4 specimens, 74-90 mm SL, P.27871-001, 10 specimens, 47-92 mm SL, all from Lake Holmes, Irian Jaya.

*Glossolepis maculosus* Allen, 1981a: 302, Figure 1.

Holotype — P.26977-001, 46 mm SL, Omsis River, PNG

Paratypes — P.26976-003, 47 mm SL, Omsis River, PNG; P.26977-004, 3 specimens, 24-44 mm SL, Omsis River, PNG.

Remarks. The type description includes two typographical errors in the catalogue numbers: holotype P.26976-001 and paratypes P.26976-004 should read P.26977-001 and P.26977-004 respectively.

*Glossolepis pseudoincisus* Allen and Cross, 1980: 392, Figure 5.

Paratypes — P.26793-001, 5 specimens, 60-77 mm SL, near Tami River, Irian Jaya.

*Glossolepis ramuensis* Allen, 1985b: 56, Figures 4, 6.

Holotype — P.28187-004, 55 mm SL, Ramu River, PNG.

Remarks. The type description includes a typographical error: the type locality of Ramuy River should read Ramu River.

*Glossolepis wanamensis* Allen and Kailola, 1979: 40, Figures 1, 2.

Holotype — P.26420-001, 81 mm SL, Lake Wanam, PNG.

Paratypes — P.26420-002, 35 specimens, 57-83 mm SL, Lake Wanam, PNG.

*Melanotaenia ajamaruensis* Allen and Cross, 1980: 384, Figure 2.

Paratypes — P.26792-001, 6 specimens, 44-68 mm SL, Ajamaru Lakes, Irian Jaya.

*Melanotaenia angfa* Allen, 1989: 103, Figure 3.

Paratypes — P.29969-001, 31 specimens, 32-97 mm SL, Pondok Creek, Indonesia; P.29971-001, 2 specimens, 105-114 mm SL, Kurumoi Creek, Indonesia.

*Melanotaenia arfakensis* Allen, 1989: 105, Figures 4, 5.

Paratypes — P.29950-001, 62 specimens, 21-66 mm SL, Sub River, Irian Jaya.

*Melanotaenia boesemani* Allen and Cross, 1980: 379, Figure 1.

Paratypes — P.26791-001, 3 specimens, 50-63 mm SL, Ajamaru Lakes, Irian Jaya.

*Melanotaenia corona* Allen, 1982a: 174, Figure 1.

Paratype — P.27386-001, 85 mm SL, Sermowai River, PNG.

*Melanotaenia eachamensis* Allen and Cross, 1982: 45, Figure.

Paratypes — P.26386-001, 80 specimens, 25-63 mm SL, Lake Eacham, Qld.

*Melanotaenia exquisita* Allen, 1978: 97, Figure.

Holotype — P.25897-001, 59 mm SL, Edith River, NT.

Paratypes — P.25897-002, 105 specimens, 20-49 mm SL, Edith River, NT.

*Melanotaenia gracilis* Allen, 1978: 98, Figure.

Holotype — P.25410-011, 68 mm SL, Drysdale River, WA.

Paratypes — P.25402-007, 4 specimens, 53-58 mm SL, P.25404-005, 19 specimens, 32-67 mm SL, P.25405-002, 6 specimens, 29-42 mm SL, P.25406-005, 3 specimens, 28-29 mm SL, P.25410-006, 13 specimens, 31-63 mm SL, P.25426-004, 7 specimens, 27-43 mm SL, P.25427-006, 35 specimens, 27-66 mm SL, P.25873-002, 80 specimens, 21-52 mm SL, all from Drysdale River, WA; P.25457-004, 9 specimens, 30-55 mm SL, Crossland Creek, WA.

Remarks. Five specimens of P.25873-002 were deposited at AMNH in 1982.

*Melanotaenia herbertaxelrodi* Allen, 1981b: 31.

Holotype — P.26972-001, 61 mm SL, Purari River, PNG.

Paratypes — P.26972-002, 41 specimens, 26-84 mm SL, collected with holotype.

*Melanotaenia irianjaya* Allen, 1985b: 58, Figures 7-9.

Paratypes — P.27864-001, 32 specimens, 21-55 mm SL, creek near Merdai village, Irian Jaya; P.27867-001, 41 specimens, 13-53 mm SL, Auk River, Irian Jaya; P.27868-001, 17 specimens, 14-47 mm SL, Kamundan River, Irian Jaya.

Remarks. The type description includes two typographical errors in the catalogue numbers: paratypes P.27868-001 and P.27869-001 should read P.27867-001 and P.27868-001 respectively.

*Melanotaenia iris* Allen, 1987a: 15, Figures 1, 2.

Holotype — P.28480-001, 95 mm SL, Logatyu River, PNG.

Paratypes — P.28480-002, 2 specimens, 79-82 mm SL, collected with holotype.

*Melanotaenia maculata* Weber, 1908: 239, Pl. XI, Figure 4.

Paralectotype — P.26783-001, 73 mm SL, Merauke River, PNG.

Remarks. This specimen was transferred to WAM from ZMA in 1979 (original catalogue number ZMA 110-168).

*Melanotaenia maylandi* Allen, 1983a: 84, Figures 1, 2, 5, 6.

Paratypes — P.27869-002, 8 specimens, 43-89 mm SL, Lake Holmes, Irian Jaya.

*Melanotaenia misoolensis* Allen, 1982b: 107, Figure 1.

Paratypes — P.27379-001, 2 specimens, 53-59 mm SL, Misool Island, Indonesia.

Remarks. The type description includes a typographical error in the catalogue numbers: paratypes P.27279-001 should read P.27379-001.

*Melanotaenia monticola* Allen, 1980: 45, Figure 5.

Holotype — P.26747-001, 68 mm SL, Southern Highlands Province, PNG.

Paratypes — P.26747-002, 20 specimens, 21-74 mm SL, collected with holotype.

Remarks. The type description includes two typographical errors in the catalogue numbers: holotype P.26741-001 and paratypes P.26741-002 should read P.26747-001 and P.26747-002 respectively.

*Melanotaenia papuae* Allen, 1981c: 50, Figures 1, 3.

Holotype — P.26393-002, 60 mm SL, Mount Diamond, PNG.

Paratypes — P.26393-001, 34 specimens, 18-54 mm SL, collected with holotype; P.26394-001, 8 specimens, 37-47 mm SL, near Port Moresby, PNG; P.26395-001, 116 specimens, 19-42 mm SL, near Port Moresby, PNG; P.26396-001, 43 specimens, 22-57 mm SL, Brown River, PNG; P.26399-001, 20 specimens, 22-39 mm SL, Brown River, PNG; P.26400-001, 21 specimens, 16-42 mm SL, Port Moresby, PNG; P.26403-001 13 specimens, 31-59 mm SL, Goldie River, PNG; P.26404-001, 36 mm SL, Brown River, PNG; P.26405-001, 21 specimens, 30-44 mm SL, stream near Brown River, PNG; P.26406-001, 2 specimens, 44-48 mm SL, Sogeri Plateau, PNG.

*Melanotaenia parkinsoni* Allen, 1980: 43, Figures 1, 2.

Holotype — P.26401-003, 98 mm SL, near Matairuka, PNG.

Paratypes — P.26401-001, 7 specimens, 29-100 mm SL, Ararabu Creek, PNG, P.26402-001, 9 specimens, 26-80 mm SL, Ararabu Creek, PNG, P.26786-001, 9 specimens, 45-74 mm SL, near Alotau, PNG.

*Melanotaenia parva* Allen, 1989: 109, Figures 9, 10.

Paratypes — P.29970-001, 125 specimens, 22-53 mm SL, Danau Kurumoi, Irian Jaya.



*Melanotaenia pimaensis* Allen, 1981b: 74.

Holotype — P.26971-001, 64 mm SL, Pima River, PNG.

Paratypes — P.26971-002, 43 specimens, 15-55 mm SL, Pima River, PNG.

*Melanotaenia pygmaea* Allen, 1978: 99, Figure.

Holotype — P.25034-003, 46 mm SL, Cascade Creek, WA.

Paratypes — P.25034-001, 30 specimens, 22-43 mm SL, Cascade Creek, WA; P.25040-001, 10 specimens, 30-45 mm SL, Youwanjela Creek, WA.

Remarks. Three specimens of P.25040-001 were deposited at AMNH in 1982.

*Rhombatractus affinis* Weber, 1908: 234, Pl. XI, Figure 5.

Paralectotype — P.26784-001, 89 mm SL, Sentani Lake Basin, PNG.

Remarks. This specimen was transferred to WAM from ZMA in 1979 (original catalogue number ZMA 103-158).

*Rhombatractus vanheurni* Weber and De Beaufort, 1922: 299.

Paralectotypes — P.26785-001, 4 specimens, 80-125 mm SL, near Idenburg River, PNG.

Remarks. These specimens were transferred to WAM from ZMA in 1979 (original catalogue number ZMA 103-138).

#### Pseudomugilidae

*Kiunga ballochi* Allen, 1983b: 73, Figures 1a, 1b.

Holotype — P.27797-001, 25 mm SL, Upper Fly River, PNG.

Paratypes — P.27797-002, 40 specimens, 15-26 mm SL, Upper Fly River, PNG; P.27798-001, 21 specimens, 18-28 mm SL, Upper Fly River, PNG.

*Popondetta connieae* Allen, 1981d: 44, Figures 1, 2.

Holotype — P.26409-003, 43 mm SL, Auga Creek, PNG.

Paratypes — P.26409-001, 32 specimens, 18-40 mm SL, Auga Creek, PNG; P.26410-001, 12 specimens, 14-29 mm SL, Ahaemo Creek, PNG; P.26411-001, 30 specimens, 13-35 mm SL, Evundo Creek, PNG; P.26412-0001, 10 specimens, 13-20 mm SL, Embi Creek, PNG; P.26416-001, 34 specimens, 12-32 mm Endehi Creek, PNG; P.26417-001, 22 specimens, 14-33 mm SL, Hunete Creek, PNG; P.26418-001, 51 specimens, 16-34 mm SL, Avindo Creek, PNG.

Remarks. Now known as *Popondichthys connieae*.

*Pseudomugil cyanodorsalis* Allen and Sarti, 1983: 48, Figure 1.

Holotype — P.27971-001, 22 mm SL, Crab Creek, WA.

Paratypes — P.27971-002, 454 specimens, 9-22 mm SL, Crab Creek, WA.

*Pseudomugil mellis* Allen and Ivanstoffs, 1982: 84, Figures 1, 2.

Paratypes — P.27439-003, 28 specimens, 14-21 mm SL, Peregian Beach, Qld.

*Pseudomugil paludicola* Allen and Moore, 1981: 106, Figure 1.

Holotype — P.26751-001, 24 mm SL, near Tureture Village, PNG.

Paratypes — P.26751-002, 100 specimens, 13-24 mm SL, near Tureture Village, PNG.

*Pseudomugil paskai* Allen and Ivanstoffs, 1986: 85, Figures 1, 2.

Holotype — P.28139-002, 24 mm SL, near Kiunga, PNG.

Paratypes — P.28139-003, 29 specimens, 13-24 mm SL, P.28140-001, 18 specimens, 12-18 mm SL, P.27794-002, 58 specimens, 15-24 mm SL, all from near Kiunga, PNG.

**Atherinidae**

*Atherinosoma wallacei* Prince, Ivanstoff and Potter, 1982: 67, Figures 1, 2 bottom.

Holotype — P.27275-001, 41 mm SL, Guildford, WA.

Paratypes P.27276-001, 4 specimens, 45-47 mm SL, Guildford, WA; P.27277-001, 3 specimens, 42-54 mm SL, Murray River, WA; P.27278-001, 2 specimens, 43-44 mm SL, Canning River, WA.

*Craterocephalus amniculus* Crowley and Ivanstoff, 1990a: 88, Figure 1.

Paratypes — P.29891-001, 4 specimens, 32-41 mm SL, Cockburn River, NSW.

*Craterocephalus centralis* Crowley and Ivanstoff, 1990a: 92, Figure 3.

Paratypes — P.29893-001, 2 specimens, 44-57 mm SL, Pioneer Creek, NT; P.29892-001, 4 specimens, 41-46 mm SL, Palm Creek Crossing, NT.

*Craterocephalus cuneiceps* Whitley, 1944a: 266.

Holotype — P.1998-001, 36 mm SL (45 mm TL), Belele Station, WA.

Remarks. There is some confusion surrounding the number of types of this species. Whitley (1944a) stated that the description was based on one specimen only, the largest of nine specimens, 20-36 mm SL, for which eight registration numbers were provided, P.1998-001 to P.2005-001. However, he did not allocate a particular number for the type. McKay subsequently (1966a) designated the holotype as P.1998-001, and amended the catalogue entry for the remaining specimens to read "Paratypes". We believe that the latter move was unwarranted as Whitley gave no indication that more than one specimen was involved in the description. Therefore, we consider that the specimens P.1999-001 to P.2005-001 are not valid types.

*Craterocephalus gloveri* Crowley and Ivanstoff, 1990b: 115, Figure 1.

Paratypes — P.30033-001, 10 specimens, 20-27 mm SL, near Dalhousie Springs, SA.

*Craterocephalus helenae* Ivanstoff, Crowley and Allen, 1987b: 177, Figure 3.

Holotype — P.25456-003, 57 mm SL, Drysdale River, WA.

Paratypes — P.25456-012, 8 specimens, 41-61 mm SL, P.25406-009, 2 specimens, 35-53 mm SL, P.25424-008, 4 specimens, 36-58 mm SL, P.25873-010, 8 specimens, 42-67 mm SL, all from Drysdale River, WA.

Remarks. The type description includes an error in the catalogue numbers: paratypes P.25456-003 should read P.25456-012.

*Craterocephalus kailolae* Ivanstoff, Crowley and Allen, 1987a: 332, Figure 1.

Paratypes — P.27783-001, 14 specimens, 16-42 mm SL, Foasi Creek, PNG.

*Craterocephalus lentiginosus* Ivanstoff, Crowley, and Allen, 1987b: 175, Figure 2.

Holotype — P.25029-003, 43 mm SL, upper Roe River, WA.

Paratypes — P.25029-007, 8 specimens (2 c/s), 21-32 mm SL, collected with holotype; P.25028-003, 6 specimens, 28-36 mm SL, Wyulda Creek, WA.

Remarks. The type description includes the same catalogue number for both the holotype and one lot of paratypes. For curatorial purposes, we have amended the number for the latter to P.25029-007.

*Craterocephalus marianae* Ivanstoff, Crowley and Allen, 1987b: 179, Figure 4.

Paratypes — P.28195-001, 10 specimens, 41-54 mm SL, Magela Creek, NT.

*Craterocephalus munroi* Crowley and Ivanstoff, 1988: 156, Figure 1.

Paratypes — P.29673-001, 5 specimens, 28-29 mm SL, Litle Bynoe River, Qld.

*Craterocephalus pimatuae* Crowley, Ivanstoff and Allen, 1991: 35, Figure 1.

Holotype — P.26971-005, 25 mm SL, Pima River, PNG.

Paratypes — P.26971-004, 4 specimens (1 c/s), 24-35 mm SL, Pima River, PNG.

Remarks. The type description includes a typographical error: holotype P.26971-004 should read P.26971-005.

*Kestratherina brevirostris* Pavlov, Ivanstoff, Last, and Crowley, 1988: 387, Figure 1.

Paratypes — P.29154-001, 4 specimens, 41-57 mm SL, Western Port Bay, Vic.

#### Trachichthyidae

*Sorosichthys ananassa* Whitley, 1945: 22, Figure 12.

Holotype — P.734-001, 52 mm SL, near Bald Island, WA.

#### Berycidae

*Centroberyx australis* Shimizu and Hutchins, 1987: 89, Figure 1.

Holotype — P.27720-001, 202 mm SL, Off Ocean Reef, WA.

Paratypes — P.27732-002, 3 specimens, 175-191 mm SL, Off Ocean Reef, WA; P.27607-002, 2 specimens, 185-209 mm SL, Off Ocean Reef, WA; P.28238-001, 201 mm SL, off Marmion, WA.

#### Holocentridae

*Adioryx lepros* Allen and Cross, 1983: 5, Figure 1.

Holotype — P.26089-001, 77 mm SL, Christmas Island, Indian Ocean.

Paratypes — P.26106-010, 62 mm SL, Christmas Island, Indian Ocean.; P.27663-0043, 58 mm SL, Rowley Shoals, WA.

Remarks. The latter paratype is listed in an addendum at the end of the type description.

#### Syngnathidae

*Choeroichthys latispinosus* Dawson, 1978a: 415, Figures 1, 2.

Holotype — P.25815-024, 27 mm SL, South Muiron Island, WA.

*Enchelyocampus brauni* Dawson and Allen, 1978: 407, Figures 6, 7.

Holotype — P.25800-001, 54 mm SL, North West Cape, WA.

Remarks. This species is now known as *Bulbonaricus brauni*.

*Heraldia nocturna* Paxton, 1975: 441, Figures 1, 2.

Paratype — P.25167-001, 61 mm SL, Sydney Harbour, NSW.

*Hippichthys gazella* Whitley, 1947: 148.

Holotype — P.2871-001, 79 mm TL, Broome, WA.

Remarks. Whitley's original description was brief, with no mention of a type specimen. He subsequently (1948) provided an expanded description, including full details of the holotype. This name is a junior synonym of *H. penicillus* (Cantor, 1850).

*Histiogamphelus meraculus* Whitley, 1948: 271.

Holotype — P.1215-001, 225 mm TL, City Beach, WA.

Remarks. The type was originally a dried specimen, but is now stored in ethanol. This species is currently known as *Mitotichthys meraculus*.

*Lissocampus affinis* Whitley, 1944a: 266.

Holotype — P.1150-001, 81 mm SL, Rottneest Island, WA.

Remarks. This name is a junior synonym of *L. runa* (Whitley, 1931).

*Micrognathus spinirostris* Dawson and Allen, 1981: 65, Figures 1-3.

Holotype — P.26479-001, 103 mm SL, off Tantabiddi Creek, WA.

*Syngnathus parvicarinatus* Dawson, 1978b: 288, Figures 1, 2.

Holotype — P.25801-001, 78 mm SL, Darwin, NT.

Remarks. This species is now known as *Hippichthys parvicarinatus*.

#### Synbranchidae

*Anomatophasma candidum* Mees, 1962a: 27.

Holotype — P.4917-001, 370 mm TL, Tantabiddi Well, WA.

Paratypes — P.4918-001, 316 mm TL, Tantabiddi Well, WA.

Remarks. This species is now known as *Ophisternon candidum*.

#### Scorpaenidae

*Centropogon australis latifrons* Mees, 1962b: 28, Pl. 1.

Holotype — P.5140-001, 76 mm SL, Cheynes Bay, WA.

Paratypes — P.4871-001, 2 specimens, 73-75 mm SL, Cheynes Bay, WA; P.4872-001, 54 mm SL, Geraldton, WA.

Remarks. One paratype of P.4781-001, 75 mm SL, is missing, presumed lost. This name was incorrectly synonymised with *C. australis* Shaw, 1790 by Paxton *et al.* (1989). In addition, Paxton *et al.* erroneously cited P.4871-001 as the holotype. The species is now known as *Centropogon latifrons*.

*Cheroscorpaena tridactyla* Mees, 1964a: 1, Pl. 1.

Paratype — P.8285-001, 84 mm SL, Frederik Hendrik Island, PNG.

Remarks. This paratype was deposited at WAM in 1964. It was originally part of RMNH 24788.

*Inimicus cirrhosus* McKay, 1964: 8, Figure 1.

Holotype — P.4980-001, 125 mm SL, Shark Bay, WA.

Paratypes — P.4981-001, 150 mm SL, P.4982-001, 180 mm SL, P.4984-001, 203 mm SL, P.4985-001, 167 mm SL, P.4986-001, 190 mm SL, P.4987-001, 256 mm SL, P.4989-001, 56 mm SL, P.4990-001, 106 mm SL, P.4991-001, 90 mm SL, P.4992-001, 77 mm SL, P.4993-001, 93 mm SL, P.4994-001, 119 mm SL, P.4995-001, 106 mm SL, all from Shark Bay, WA; P.4983-001, 155 mm SL, Exmouth Gulf, WA; P.4988-001, 56 mm SL, Rat Island, WA.

Remarks. Paratype P.4983-001 is missing, presumed lost. This name is a synonym of *I. sinensis* (Valenciennes, 1833).

*Maxillicosta lopholepis* Eschmeyer and Poss, 1976: 44, Figure 6.

Holotype — P.5736-001, 46 mm SL, off Bernier Island, WA.

Paratype — P.25384-001, 39 mm SL, taken with holotype.

*Scorpaenodes steenei* Allen, 1977a: 145, Pl. 1.

Holotype — P.25178-006, 93 mm SL, Rottneest Island, WA.

### Aploactinidae

*Cocotropus larvatus* Poss and Allen, 1987: 79, Figure 1.

Paratype — P.29008-001, 22 mm SL, Christmas Island, Indian Ocean.

*Neoploactis tridorsalis* Eschmeyer and Allen, 1978: 443, Figures 1, 2.

Holotype — P.25529-001, 34 mm SL, One Tree Island, Qld.

*Paraploactis intonsa* Poss and Eschmeyer, 1978: 414, Figures 1-6, 9.

Holotype — P.12100-001, 125 mm SL, Shark Bay, WA.

Paratypes — P.25840-001, 128 mm SL, Shark Bay, WA; P.8923-001, 126 mm SL, Shark Bay, WA; P.5874-001, 121 mm SL, Shark Bay, WA; P.23605-001, 114 mm SL, Carnarvon, WA; P.4714-001, 112 mm SL, Shark Bay, WA; P.6069-001, 111 mm SL, Shark Bay, WA; P.14683-001, 98 mm SL, Shark Bay, WA.

Remarks. Other paratypes are also deposited at CAS.

*Paraploactis pulvinus* Poss and Eschmeyer, 1978: 413, Figures 1-6, 8.

Holotype — P.25528-001, 105 mm SL, Exmouth Gulf, WA.

Paratypes — P.20123-001, 119 mm SL, Dampier Archipelago, WA; P.23735-001, 93 mm SL, Exmouth Gulf, WA.

Remarks. Other paratypes are also deposited at CAS.

### Platycephalidae

*Rogadius patriciae* Knapp, 1987: 54.

Paratype — P.26212-004, 179 mm SL, North West Shelf, WA.

*Platycephalus chauliodous* Knapp, 1991: 24.

Paratypes — P.24172-001, 453 mm SL, Cockburn Sound, WA; P.25798-008, 66 mm SL, Eagle Bay (Geographe Bay), WA; P.29879-001, 332 mm SL, off Perth, WA; P.29944-001, 399 mm SL, Cowaramup Beach, WA.

### Congiopodidae

*Congiopodus coriaceus* Paulin and Moreland, 1979: 604, Figure 2.

Paratype — P.26435-001, 176 mm SL, Campbell Island, New Zealand.

### Ambassidae

*Parambassis altipinnis* Allen, 1982c: 166, Figure 1.

Paratypes — P.27378-001, 7 specimens, 74-90 mm SL, Mamberamo River, Irian Jaya.

### Serranidae

*Acanthistius pardalotus* Hutchins, 1981: 493, Figures 1b, 2.

Holotype — P.5113-001, 189 mm SL, Kalbarri, WA.

Paratypes — P.3784-001, 236 mm SL, City Beach, WA; P.4465-001, 184 mm SL, Mullaloo Beach, WA; P.4502-001, 183 mm SL, off Rottneest Island, WA; P.4791-001, 197 mm SL, Rottneest Island, WA; P.4792-001, 248 mm SL, Port Gregory, WA; P.5577-001, 62 mm SL, Port Gregory, WA; P.5777-001, 275 mm SL, Margaret River, WA; P.14532-001, 370 mm SL, Houtman Abrolhos, WA; P.14533-001, 163 mm SL, Point Quobba, WA; P.16775-001, 265 mm SL, off Prevelly Park, WA; P.26664-004, 277 mm SL, Shark Bay, WA; P.26825-001, 2 specimens, 94-118 mm SL, Rottneest Island, WA.

- Anthias engelhardi* Allen and Stark, 1982: 48, Figures 2, 3.  
Paratype — P.27483-001, 66 mm SL, Escape Reef, Qld.
- Anthias georgei* Allen, 1976a: 28, Figure 2.  
Holotype — P.25205-001, 80 mm SL, off Bernier Island, WA.  
Paratypes — P.25205-002, 2 specimens, 29-33 mm SL, off Bernier Island, WA.
- Anthias hutomoi* Allen and Burhanuddin, 1976: 46, Figure 1.  
Paratypes — P.25199-001, 4 specimens, 28-49 mm SL, Seram, Indonesia.
- Anthias lori* Lubbock and Randall, 1976: 287.  
Paratype — P.25493-001, 33 mm SL, Tetiaroa Atoll, Society Islands.
- Anthias pictilis* Randall and Allen, 1978: 33, Figures 1, 2.  
Paratypes — P.25939-001, 3 specimens, 70-91 mm SL, North Rock, Lord Howe Island.
- Anthias randalli* Lubbock and Allen, 1978: 260, Figures 1, 2.  
Paratypes — P.25233-007, 6 specimens, 22-41 mm SL, Ambon, Indonesia; P.25239-002, 8 specimens, 35-47 mm SL, Ambon, Indonesia; P.25628-001, 3 specimens, 54-56 mm SL, Bairakaseru Island, Palau Islands.
- Anthias rubrizonatus* Randall, 1983: 35, Figures 5-8.  
Paratype — P.27647-001, 52 mm SL, Guadalcanal, Solomon Islands.
- Anthias smithvanizi* Randall and Lubbock, 1981: 9, Figures 7, 8.  
Paratypes — P.25492-001, 4 specimens, 27-48 mm SL, Ambon, Indonesia.
- Caesiocorpiis theagenes* Whitley, 1945: 21, Figure 11.  
Holotype — P.2795-001, 140 mm TL, near Carnarvon, WA.
- Cephalopholis xanthopterus* Allen and Stark, 1975: 246, Figure 1.  
Paratype — P.25244-008, 112 mm SL, Ambon, Indonesia.  
Remarks. This name is a junior synonym of *C. cyanostigma* (Valenciennes, 1828) (see Randall, Allen and Steene, 1990).
- Ellerkeldia rubra* Allen, 1976a: 24, Figure 1.  
Holotype — P.25314-003, 71 mm SL, Houtman Abrolhos, WA.  
Paratypes — P.25226-001, 73 mm SL, off Cape Inscription, WA; P.25311-007, 2 specimens, 29-50 mm SL, Houtman Abrolhos, WA.  
Remarks. This name was shown to be invalid by Allen and Randall (1990) (preoccupied by *Scopularia rubra* De Buen, 1959). They proposed the new name *Hypoplectrodes cardinalis* (*Hypoplectrodes* is the senior synonym of *Ellerkeldia*, see Anderson and Heemstra, 1989).
- Ellerkeldia wilsoni* Allen and Moyer, 1980: 329, Figures 1, 2.  
Holotype — P.26531-010, 151 mm SL, Geographe Bay, WA.  
Paratypes — P.26531-011, 2 specimens, 76-133 mm SL, Geographe Bay, WA; P.26532-001, 5 specimens, 58-144 mm SL, Geographe Bay, WA; P.26533-001, 150 mm SL, off Rottneest Island, WA.  
Remarks. This species is now known as *Hypoplectrodes wilsoni*.
- Epinephelus bilobatus* Randall and Allen, 1987: 406, Figure 4.  
Holotype — P.25119-008, 156 mm SL, Dampier Archipelago, WA.  
Paratypes — P.14924-001, 101 mm SL, Yampi Sound, WA; P.14948-001, 80 mm SL, Port Wolcott, WA; P.24358-001, 238 mm SL, Dampier Archipelago, WA.
- Epinephelus homosinensis* Whitley, 1944a: 267.  
Holotype — P.2413-001, 235 mm SL, Broome, WA.

Paratypes — P.2412-001, 251 mm TL, Broome, WA; P.2430-001, 128 mm TL, Houtman Abrolhos, WA.

Remarks. Whitley's description mentions only one locality, namely Geraldton, WA, but WAM catalogue entries made in 1942 list Broome for the holotype and the first paratype, and the Houtman Abrolhos, which is located off Geraldton, for the second paratype. As there is no evidence to suggest that the catalogue entries are incorrect, we have altered the type locality to Broome. This name is a junior synonym of *E. rivulatus* (Valenciennes, 1830).

*Epinephelus rankini* Whitley, 1945: 24.

Holotype — P.2847-001, 330 mm SL, Onslow, WA.

Remarks. This name is a junior synonym of *E. multinotatus* (Peters, 1877).

*Epinephelus spiramen* Whitley, 1945: 25.

Holotype — P.2796-001, 263 mm SL, near Carnarvon, WA.

Remarks. The holotype consists of the head only. This name is a junior synonym of *E. fasciatus* (Forsskal, 1775).

*Epinephelus stictus* Randall and Allen, 1987: 394, Figure 1.

Holotype — P.28277-001, 328 mm SL, near Heywood Shoals, WA.

*Epinephelus timorensis* Randall and Allen, 1987: 399, Figure 2.

Holotype — P.24794-001, 141 mm SL, Dillon Shoals, WA.

*Epinephelus trophis* Randall and Allen, 1987: 402, Figure 3.

Holotype — P.24795-001, 104 mm SL, Dillon Shoals, WA.

Remarks. The paratype is housed at BPBM.

*Lepidoperca filamenta* Roberts, 1987: 83.

Paratypes — P.26804-001, 2 specimens, 107-127 mm SL, Great Australian Bight.

*Liopropoma multilineatum* Randall and Taylor, 1988: 41, Pl. II C, Figures 1, 7.

Paratypes — P.28024-007, 61 mm SL, Rowley Shoals, WA; P.28186-017, 46 mm SL, New Ireland, PNG.

*Liopropoma tonstrinum* Randall and Taylor, 1988: 38, Pl. II B, Figures 1, 7.

Paratypes — P.26082-015, 28 mm SL, P.26087-011, 3 specimens, 28-65 mm SL, P.26121-002, 54 mm SL, all from Christmas Island, Indian Ocean.

*Plectranthias alleni* Randall, 1980a: 113, Figure 2.

Holotype — P.25625-001, 52 mm SL, off southwestern WA.

Paratypes — P.23309-001, 55 mm SL, off Lancelin, WA; P.23322-001, 17 mm SL, off Rottneest Island, WA; P.23323-001, 23 mm SL, off Dongara, WA; P.23325-001 to 23330-001, 10 specimens, 30-59 mm SL, off Green Head, WA; P.23334-001, 62 mm SL, off Rottneest Island, WA.

Remarks. Paratypes P.23325-001 to P.23330-001 are all located in the same jar as only six numbers were originally allocated to the 10 specimens involved. Furthermore, reference in the type description to P.23325-30 — a range of six numbers without suffixes — appears to have been misinterpreted as P.23325-030, a single species number with a suffix (see Introduction).

*Plectranthias fourmanoiri* Randall, 1980a: 125, Figure 7.

Paratypes — P.26085-029, 28 mm SL, P.26113-004, 2 specimens, 16-20 mm SL, P.26126-005, 21 mm SL, all from Christmas Island, Indian Ocean.

*Plectranthias inermis* Randall, 1980a: 135, Figure 11.

Paratypes — P.26121-001, 2 specimens, 19-20 mm SL, P.26125-008, 26 mm SL, all from Christmas Island, Indian Ocean.

*Plectranthias nanus* Randall, 1980a: 159, Figure 22.

Paratypes — P.26090-002, 32 mm SL, P.26122-003, 2 specimens, 25-26 mm SL, all from Christmas Island, Indian Ocean.

*Pseudanthias sheni* Randall and Allen, 1989: 74, Figures 1-5.

Holotype — P.29660-001, 96 mm SL, Rowley Shoals, WA.

Paratype — P.27668-001, 85 mm SL, Rowley Shoals, WA.

*Rabaulichthys altipinnis* Allen, 1984a: 48, Figure 1.

Holotype — P.28179-001, 44 mm SL, near Rabaul, PNG.

Paratypes — P.28180-001, 3 specimens, 36-46 mm SL, near Rabaul, PNG.

*Sacura parva* Heemstra and Randall, 1979: 9, Figure 2, Pl. 4.

Holotype — P.24785-001, 67 mm SL, Dillon Shoals, Timor sea.

Paratype — P.26459-001, 17 mm SL, Dillon Shoals, Timor sea.

#### Pseudochromidae

*Pseudoplesiops howensis* Allen, 1987e: 250, Figures 1, 2.

Paratypes — P.28622-001, 2 specimens, 26-29 mm SL, Lord Howe Island.

*Pseudoplesiops knightii* Allen, 1987e: 253, Figures 3, 4.

Holotype — P.28534-001, 29 mm SL, Great Barrier Reef, Qld.

Paratypes — P.25322-004, 25 mm SL, P.28531-004, 3 specimens, 16-27 mm SL, P.28533-013, 3 specimens, 26-30 mm SL, P.28534-002, 3 specimens, 27-28 mm SL, P.28535-015, 2 specimens, 29-32 mm SL, all from Great Barrier Reef, Qld; P.27826-067, 5 specimens, 23-25 mm SL, Manus Island, PNG.

*Pseudoplesiops multisquamatus* Allen, 1987e: 257, Figures 5, 6.

Holotype — P.27470-002, 42 mm SL, Great Barrier Reef, Qld.

Paratypes — P.28170-010, 3 specimens, 33-40 mm SL, near Rabaul, PNG; P.28174-028, 39 mm SL, near Rabaul, PNG; P.27826-041, 3 specimens, 31-38 mm SL, Manus Island, PNG; P.28541-030, 3 specimens, 16-37 mm SL, Holmes Reef, Coral Sea; P.27476-001, 39 mm SL, Great Barrier Reef, Qld; P.27659-025, 32 mm SL, Rowley Shoals, WA; P.26082-019, 47 mm SL, P.26087-012, 2 specimens, 36-43 mm SL, P.26097-010, 38 mm SL, P.26099-011, 2 specimens, 24-39 mm SL, P.26116-010, 24 mm SL, P.26121-003, 29 mm SL, all from Christmas Island, Indian Ocean.

#### Plesiopidae

*Assesor flavissimus* Allen and Kuitert, 1976: 211, Figure 5.

Holotype — P.25322-001, 39 mm SL, Great Barrier Reef, Qld.

Paratypes — P.25323-001, 8 specimens, 26-38 mm SL, Great Barrier Reef, Qld.

*Assesor randalli* Allen and Kuitert, 1976: 208: Figure 4.

Paratypes — P.25469-001, 3 specimens, 37-40 mm SL, Ishigaki, Ryukyu Islands.

Remarks. The type description includes a typographical error: paratypes P.25419-001 should read P.25469-001.



*Paraplesiops alisonae* Hoese and Kuitert, 1984: 11, Figures 1-3.

Paratypes — P.27136-005, 3 specimens, 72-107 mm SL, Victor Harbour, SA.

Remarks. The type description includes a typographical error: paratypes P.27136-005 should read P.27136-005.

*Paraplesiops sinclairi* Hutchins, 1987a: 231, Figures 1, 2.

Holotype — P.28298-008, 108 mm SL, near Esperance, WA.

Paratypes — P.9257-001, 45 mm SL, Lancelin Island, WA; P.26006-001, 2 specimens, both 122 mm SL, Recherche Archipelago, WA; P.28298-020, 112 mm SL, near Esperance, WA.

*Plesiops gracilis* Mooi and Randall, 1991: 374, Pl. IA, Figures 1-3.

Paratypes — P.27654-027, 2 specimens, 53-54 mm SL, Rowley Shoals, WA.

*Plesiops insularis* Mooi and Randall, 1991: 379, Pl. IB-C, Figures 3, 4, 5A, 6A, 7, 8.

Paratypes — P.25650-003, 3 specimens, 72-90 mm SL, Lord Howe Island, NSW.

*Steeneichthys nativitatis* Allen, 1987d: 13, Figure 1.

Holotype — P.29016-001, 24 mm SL, Christmas Island, Indian Ocean.

*Steeneichthys plesiopsus* Allen and Randall, 1985a: 187, Figures 1, 2.

Holotype — P.28031-018, 25 mm SL, Rowley Shoals, W.A.

Paratype — P.28027-005, 18 mm SL, Rowley Shoals, WA.

*Trachinops brauni* Allen, 1977b: 62, Figures 1a, 2.

Holotype — P.25545-001, 42 mm SL, Rottneest Island, WA.

Paratypes — P.4894-001, 4 specimens, 32-40 mm SL, P.25164-005, 41 mm SL, P.25197-004, 2 specimens, 32-36 mm SL, P.25251-010, 2 specimens, 43-55 mm SL, all from Rottneest Island, WA; P.25308-004, 4 specimens, 23-27 mm SL, P.25315 005, 3 specimens, 23-30 mm SL, all from Houtman Abrolhos, WA.

#### Acanthoclinidae

*Beliops xanthokrossus* Hardy, 1984: 378, Figures 2D, 10.

Holotype — P.26617-008, 22 mm SL, Rottneest Island, WA.

Paratypes — P.25765-011, 26 mm SL, Recherche Archipelago, WA; P.26006-013, 22 mm SL, Recherche Archipelago, WA; P.26617-021, 3 specimens, 14-24 mm SL, Rottneest Island, WA; P.27616-034, 2 specimens, 21-22 mm SL, Rottneest Island, WA; P.27953-013, 2 specimens, 21-22 mm SL, Jurien Bay, WA; P.27955-013, 22 mm SL, off Port Denison, WA.

Remarks. The type description includes one paratype with the same registration number as the holotype, P.26617-008. This has here been combined with paratypes P.26617-021, which had originally been listed as 2 specimens, 14-17 mm SL (all 3 specimens were collected with the holotype). Furthermore, all specimens listed in the type description are incorrectly shown as having a space between the second and third digits of the registration number.

#### Terapontidae

*Hannia greenwayi* Vari, 1978: 244, Figure 39.

Holotype — P.25380-002, 81 mm SL, Hann River, WA.

Paratypes — P.25380-001, 48 specimens, 47-89 mm SL, Hann River, WA.

Remarks. The holotype and five paratypes were allowed to dry out while on loan, and are now nonexistent (see section on lost and missing types in the Introduction). Other paratypes are at AMNH.

*Hephaestus epirrhinos* Vari and Hutchins, 1978: 4, Figure 6.

Holotype — 25724-001, 99 mm SL, Drysdale River, WA.

Paratypes — P.25403-002, 253 mm SL, P.25404-003, 4 specimens, 40-179 mm SL, P.25407-003, 72 mm SL, P.25410-001, 3 specimens, 66-113 mm SL, all from Drysdale River, WA; P.25421-001, 2 specimens, 195-310 mm SL, Palmoondoor Creek, WA.

Remarks. The type description incorrectly lists paratypes P.25421-001 as being collected with rotenone; this should be amended to collected by handline.

*Hephaestus lineatus* Allen, 1984b: 393, Figures 1, 2.

Paratypes — P.27867-002, 2 specimens, 22-23 mm SL, Auk River, Irian Jaya; P.27868-002, 42 mm SL, near Kamundan River, Irian Jaya.

Remarks. The type description includes two typographical errors: paratypes P.27868-002 and P.27869-002 should read respectively P.27867-002 and P.27868-002.

*Leiopotherapon macrolepis* Vari, 1978: 235, Figure 34.

Holotype — P.25392-001, 92 mm SL, near Prince Regent River, WA.

Paratypes — P.25025-002, 38 mm SL, P.25026-003, 5 specimens, 35-53 mm SL, P.25027-003, 6 specimens, 36-43 mm SL, P.25029-002, 20 specimens, 40-65 mm SL, all from Roe River, WA; P.25032-005, 10 specimens, 30-50 mm SL, P.25040-002, 12 specimens, 40-115 mm SL, all from near Prince Regent River, WA.

Remarks. Three specimens of P.25040-002 were allowed to dry out while on loan, and are now nonexistent (see Introduction). Several typographical errors occur in the original description. Firstly, P-25-25-002 should read P.25025-002 (all registration numbers in this description have a dash instead of a full stop following the letter P), and secondly P-25025-002, 1, 38 mm should read P.25032-005, 10, 30-50 mm.

*Mesopristes jenkinsi* Whitley, 1945: 26.

Holotype — P.2763-001, 116 mm SL, Ord River, WA.

Remarks. Now known as *Hephaestus jenkinsi*.

*Pingalla midgleyi* Allen and Merrick, 1984: 76, Figures 1, 2.

Paratypes — P.27050-001, 5 specimens, 50-61 mm SL, South Alligator River System, NT; P.27051-002, 4 specimens, 51-74 mm SL, Katherine River, NT; P.26702-002, 61 mm SL, East Alligator River System, NT.

Remarks. The type description includes a typographical error: paratypes P.27050-001 consist of only 5 specimens, not 7.

*Syncomistes butleri* Vari, 1978: 311, Figures 87, 88.

Holotype — P.25385-001, 123 mm SL, near South Alligator River, NT.

Paratypes — P.21536-001, 60 mm SL, Ord River, WA; P.25386-001, 5 specimens, 54-78 mm SL, South Alligator River, NT; P.25387-001, 9 specimens, 57-211 mm SL, Katherine River, NT; P.25388-001, 11 specimens, 55-175 mm SL, South Alligator River, NT; P.25389-001, 5 specimens, 44-57 mm SL, East Mary River, NT; P.25390-001, 8 specimens, 62-69 mm SL, West Baines River, NT; P.25427-003, 3 specimens, 74-88 mm SL, Drysdale River, WA.

Remarks. The holotype was allowed to dry out while on loan, and is now nonexistent (see Introduction).

*Syncomistes kimberleyensis* Vari, 1978: 315, Figure 91.

Holotype — P.25383-001, 36 mm SL, Bow River, WA.

Remarks. The holotype was allowed to dry out while on loan, and is now nonexistent (see Introduction). Two paratypes are housed at AMNH.

*Syncomistes rastellus* Vari and Hutchins, 1978: 1, Figure 1.

Holotype — P.25723-001, 100 mm SL, near Gibb River, WA.

Paratypes — P.25402-004, 3 specimens, 74-84 mm SL, P.25404 010, 3 specimens, 66-81 mm SL, P.25410-004, 13 specimens, 75-125 mm SL, all from Drysdale River, WA; P.25405-007, 85 mm SL, near Drysdale River, WA.

*Syncomistes trigonicus* Vari, 1978: 316, Figures 92, 93.

Holotype — P.25391-001, 93 mm SL, near Roe River, WA.

Paratypes — P.25026-002, 2 specimens, 47-112 mm SL, Roe River, WA; P.25027-002, 130 mm SL, Roe River, WA; P.25028-006, 98 mm SL, near Roe River, WA.

Remarks. The holotype was allowed to dry out while on loan, and is now nonexistant (see Introduction).

*Therapon aheneus* Mees, 1963: 2, Figure 1.

Holotype — P.5350-001, 90 mm SL, Millstream Pool, WA.

Paratypes — P.5351-001, 9 specimens, 51-101 mm SL, P.5358 001, 3 specimens, 59-70 mm SL, P.5373-001, 5 specimens, 68-95 mm SL, all from Millstream Pool, WA; P.5423-001, 2 specimens, 47-51 mm SL, P.5424-001, 50 mm SL, all from Fortescue River, WA.

Remarks. The holotype was allowed to dry out while on loan, and is now nonexistant (see Introduction). In addition, paratypes P.5423-001 and P.5424-001 are missing, presumed lost. Now known as *Leiopotherapon aheneus*.

#### Kuhliidae

*Nannoperca variegata* Kuitert and Allen, 1986: 111, Figures 1-4.

Paratypes — P.28598-001, 47 mm SL, P.28597-001, 9 specimens, 37-50 mm SL, all from Winnap, Vic.

#### Priacanthidae

*Priacanthus fitchi* Starnes, 1988: 164, Pl. 1h, Figure 3e.

Paratypes — P.25399-012, 7 specimens, 69-185 mm SL, off Browse Island, WA; P.26291-007, 3 specimens, 95-105 mm SL, off Broome, WA.

*Priacanthus sagittarius* Starnes, 1988: 178, Pls IIIe-g; Figures 3f, 3h, 5a-d, 5f, 8b, 12c, 18b.

Paratype — P.29373-001, 175 mm SL, Bali-Java, Indonesia.

#### Apogonidae

*Apogon caudicinctus* Randall and Lavett Smith, 1988: 2, Figure 1.

Paratype — P.29385-001, 53 mm SL, Marotiri (Rapa?).

*Apogon fusovatus* Allen, 1985c: 11, Figure 1.

Holotype — P.14397-001, 94 mm SL, near Darwin, NT.

Paratypes — P.28316-001, 66 mm SL, P.14516-001, 83 mm SL, P.14517-001, 88 mm SL, all from near Darwin, NT; P.28315-001, 83 mm SL, Aru Islands, Indonesia.

Remarks. The type description includes two typographical errors: paratype P.28316-001 should read P.28315-001 and vice versa (i.e. the numbers allocated to these two specimens are transposed).

- Apogon limenus* Randall and Hoese, 1988: 361, Figures 1, 2.  
 Paratypes — P.27082-006, 5 specimens, 81-96 mm SL, Northwest Solitary Island, NSW.  
 Remarks. The locality for these paratypes is incorrectly given as Solitary Island in the type description.
- Apogon pallidofasciatus* Allen, 1987b: 3, Figure 1.  
 Holotype — P.28985-001, 100 mm SL, North West Cape, WA.  
 Paratypes — P.25114-004, 79 mm SL, Dampier Archipelago, WA; P.25117-009, 86 mm SL, Dampier Archipelago, WA; P.27274-046, 5 specimens, 74-80 mm SL, Port Headland, WA.
- Apogon pselion* Randall, Fraser and Lachner, 1990: 57, Figures 8, 9.  
 Paratypes — P.29386-001, 2 specimens, 25-35 mm SL, El Himeira, Red Sea.
- Apogon selas* Randall and Hayashi, 1989: 399, Figures 1, 2.  
 Paratype — P.29863-001, 24 mm SL, Iriomote Island, Ryukyu Islands.
- Pseudamia hayashii* Randall, Lachner and Fraser, 1985: 11, Figures 2, 4.  
 Paratypes — P.27827-023, 30 mm SL, Manus Island, PNG; P.28031-023, 38 mm SL, Rowley Shoals, WA; P.28174-004, 2 specimens, 36-52 mm SL, Rabaul, PNG.
- Pseudamia zonata* Randall, Lachner and Fraser, 1985: 17, Pl. I D, Figures 2, 5, 6.  
 Paratypes — P.27493-001, 2 specimens, 14-42 mm SL, Rabaul, PNG.
- Quinca mirifica* Mees, 1965: 83, Figure 1.  
 Holotype — P.5787-001, 105 mm SL, Yampi Sound, WA.  
 Remarks. Now known as *Pterapogon mirifica*.
- Cercamia cladara* Randall and Lavett Smith, 1988: 7, Figure 2.  
 Paratype — P.29655-001, 27 mm SL, Haurei Bay, Rapa.
- Rhabdamia eremia* Allen, 1987b: 4, Figure 2.  
 Holotype — P.25815-020, 38 mm SL, South Murion Island, WA.  
 Paratypes — P.26071-013, 26 mm SL, Houtman Abrolhos, WA; P.27581-001, 40 mm SL, and P.28024-009, 22 mm SL, both from Rowley Shoals, WA; P.27459-006, 30 mm SL, Escape Reef, Qld; P.26085-015, 26 mm SL, Christmas Island, Indian Ocean; P.26092-023, 2 specimens, 20-21 mm SL, Christmas Island, Indian Ocean; P.25793-003, 6 specimens, 25-31 mm SL, Red Sea, Saudi Arabia.
- Vincentia badia* Allen, 1987b: 6, Figure 3.  
 Holotype — P.25999-006, 68 mm SL, Point Peron, WA.  
 Paratypes — P.27956-009, 2 specimens, 39-40 mm SL, Port Denison, WA; P.26060-006, 43 mm SL, Rottneest Island, WA; P.28967-001, 39 mm SL, Garden Island, WA; P.26532-007, 58 mm SL, Geographe Bay, WA; P.27643-009, 2 specimens, 47-61 mm SL, Geographe Bay, WA.  
 Remarks. The type locality was originally given as Port Peron; it should have read Point Peron.
- Vincentia macrocauda* Allen, 1987b: 7, Figure 4.  
 Holotype — P.26608-017, 70 mm SL, Cheyne Beach, WA.  
 Paratypes — P.28298-010, 84 mm SL, Lucky Bay, WA; P.28293-023, 52 mm SL, Lucky Bay, WA; P.28297-015, 2 specimens, 40-44 mm SL, Lucky Bay, WA; P.28864-005, 62 mm SL, near Cape Le Grand, WA.

**Sillaginidae**

*Sillago (Parasillago) attenuata* McKay, 1985: 36, Figures 12A, 13C, 16.

Paratypes — P.28581-001, 2 specimens (1 c/s), Tarut Bay, Persian Gulf.

Remarks. These paratypes were originally described with the number PO.491 to denote inclusion in the WAM osteological collection. As this system of registration is no longer in use, they have been reregistered in the Fish Catalogue under the number cited above. Lengths were not given for these specimens in the description.

*Sillago (Parasillago) bassensis flindersi* McKay, 1985: 29, Figures 9I-L, 14K, 15.

Paratypes — P.19116-001, Lakes Entrance, Vic; P.28583-001 (c/s), 20 specimens, Moreton Bay, Qld; P.28588-001 (c/s), Lakes Entrance, Vic; P.28608-001 (skel.), Lakes Entrance, Vic. Remarks. Paratypes PO.366 to PO.385 from the original description have been reregistered as P.28583-001, whereas PO.793 and PO.794 have been reregistered as P.28588-001 and P.28608-001 respectively (see above account on *S. attenuata*). Paratypes PO.795 to PO.797 are missing and presumed lost. Lengths were not given in the type description.

*Sillago fraseri* Whitley, 1944a: 270.

Holotype — P.2698-001, 93 mm SL, Bunbury, WA.

Paratype — P.2699-001, 68 mm SL, Bunbury, WA.

Remarks. Registration numbers for the types were inadvertently omitted from the original description.

*Sillago (Parasillago) lutea* McKay, 1985: 40, Figures 10D, 13H-I, 18.

Holotype — P.15928-001, 130 mm SL, Exmouth Gulf, WA.

Paratypes — P.13223-001 (c/s), Gulf of Carpentaria, Qld; P.14261-001, Darwin Area, NT; P.14398-001, Darwin, NT; P.14480-001 to P.14483-001 (all c/s), Darwin, NT; P.15093-001 (skel.) to P.15106-001, Darwin, NT; P.15878-001 to P.15910-001, Exmouth Gulf, WA; P.28582-001, 5 specimens (c/s), Karratha, WA; P.28584-001, 4 specimens (c/s), Exmouth Gulf, WA; P.28585-001, 2 specimens (c/s), Admiralty Gulf, WA; P.28586-001, 6 specimens (c/s), Mitchell River area, WA; P.28589-001, 25 specimens (c/s), Exmouth Gulf, WA; P.28590-001, 5 specimens (c/s), Exmouth Gulf, WA; P.28602-001, 43 specimens (skel.), P.28603-001, 7 specimens (skel.), all from Admiralty Gulf, WA; P.28604-001, 55 specimens (skel.), P.28605-001, 92 specimens (skel.), P.28606-001, 53 specimens (skel.), all from Exmouth Gulf, WA; P.29445-001 (c/s), King Bay, WA; P.30189-001, 13 specimens (c/s), Admiralty Gulf, WA.

Remarks. In the original description, many of the paratypes were denoted by a PO number; these have been reregistered as follows (see above account on *Sillago attenuata*): PO.335 to PO.359 — P.28589-001; PO.361 to PO.365 — P.28590-001; PO.386 to PO.442 — P.28604-001; PO.465 and PO.469 to PO.471 — P.28582-001; PO.492 to P.583 — P.28605-001; PO.601 to PO.604 — P.28584-001; PO.605 to PO.617 — P.30189-001; PO.676 to PO.682 — P.28603-001; PO.683 to PO.735 — P.28606-001; PO.752 to PO.753 — P.28585-001; PO.762 — P.29445-001; PO.787 to PO.792 — P.28586-001; PO.822 to PO.864 — P.28602-001; PO.960 to PO.969 — P.30190-001. In addition, the paratypes P.14261-001 and P.15093-001 are missing and presumed lost. Measurements were only provided for the holotype in the original description.

*Sillago vincenti* McKay, 1976: 378, Figures 1a-c.

Paratype — P.26850-001, 170 mm SL, near Quilon, India.

Remarks. The type description lacks all registration numbers.

*Sillago (Parasillago) vittata* McKay, 1985: 20, Figures 4B, 10C, 13M-O, 14L, 17.

Holotype — P.14172-001, 209 mm SL, Rottnest Island, WA.

Paratypes — P.14158-001 to P.14171-001, 14 specimens, Rottnest Island, WA; P.14173-001 to P.14175-001, 3 specimens, Rottnest Island, WA; P.14983-001, Rottnest Island, WA; P.15242-001 to P.15246-001, 5 specimens, Shark Bay, WA; P.19230-001, Maud Landing, WA; P.28607-001, 15 specimens (skel.), Shark Bay, WA.

Remarks. Paratypes PO.190 to PO.204 from the original description have been reregistered as P.28607-001 (see above account on *Sillago attenuata*). Furthermore, paratype P.14174-001 is missing and presumed lost. The description includes a measurement for the holotype only.

#### Carangidae

*Caranx humerosus* McCulloch, 1915: 137, Pl. XXV.

Paratypes — P.258-001, 2 specimens, 123-128 mm SL, off Pine Peak, Qld.

Remarks. Unlike many of McCulloch's other new species descriptions in the "Endeavour" series (see Introduction), this account does not provide precise details of the type series. Mention is made of the morphological variation amongst a series of 48 specimens, one of which was selected as the holotype. Presumably all 48 specimens were used in the description; four of those subsequently deposited at AMS have been designated as paratypes (see Paxton et al., 1989). Therefore we prefer to recognise the two WAM specimens as paratypes also. The original "Endeavour" collection number of these paratypes was E.2821. This species is now known as *Carangoides humerosus*.

#### Lutjanidae

*Lutjanus mizenkoi* Allen and Talbot, 1985: 58, Pl. VII H, Figures 7, 28.

Paratype — P.28314-001, 224 mm SL, Apolima Strait, Western Samoa.

#### Caesionidae

*Caesio varilineata* Carpenter, 1987: 24, Pl. II C, VI G, Figure 7.

Paratypes — P.25980-001, 96 mm SL, Quatar Peninsula, Persian Gulf; P.25986-002, 276 mm SL, Bahrain, Persian Gulf; P.25997-001, 4 specimens, 167-199 mm SL, Khur Fakkan, Gulf of Oman.

#### Nemipteridae

*Parascalopsis rufomaculatus* Russell, 1986: 137, Figures 1, 2.

Holotype — P.28105-001, 153 mm SL, North West Shelf, WA.

Paratypes — P.26207-003, 5 specimens, 115-121 mm SL, P.28106-001, 146 mm SL, all from the North West Shelf, WA.

*Parascalopsis tanyactis* Russell, 1986: 140, Figures 1, 3.

Holotype — P.26263-001, 147 mm SL, North West Shelf, WA.

Paratypes — P.26187-003, 166 mm SL, Monte Bello Islands, WA; P.26212-001, 12 specimens, 186-188 mm SL, off Port Headland, WA; P.26888-001, 190 mm SL, off Rowley Shoals, WA; P.26889-001, 206 mm SL, off Carnarvon, WA.

### Mullidae

*Upeneichthys stotti* Hutchins, 1990: 484, Figure 1.

Holotype — P.28939-003, 117 mm SL, Rottneest Island, WA.

Paratypes — P.5504-001, 138 mm SL, Houtman Abrolhos, WA; P.5594-001, 102 mm SL, Kalbarri, WA; P.5783-001, 102 mm SL, Shark Bay, WA; P.20883-001, 112 mm SL, off Rottneest Island, WA; P.20890-001, 110 mm SL, off Rottneest Island, WA; P.22067-001, 2 specimens, 126-132 mm SL, off Rottneest Island, WA; P.27219-026, 98 mm SL, Houtman Abrolhos, WA; P.27960-011, 2 specimens, 85-99 mm SL, Kalbarri, WA; P.28614-001, 11 specimens (1 c/s), 93-115 mm SL, King George Sound, WA; P.28939-002, 5 specimens, 90-121 mm SL, Rottneest Island, WA.

Remarks. Other paratypes at AMS and BPBM.

### Monodactylidae

*Bramichthys woodwardi* Waite, 1905: 72, Pl. xvi.

Holotype — P.13257-001, 146 mm SL, Mandurah, WA.

Remarks. Now known as *Schuettea woodwardi*.

### Pempheridae

*Pempheris elongata* McCulloch, 1911: 47, Pl. iv, Figure 1.

Paratype — P.28591-001, 73 mm SL (90 mm TL), Flinders Island, Tas.

Remarks. This paratype was first registered in the WAM Zoological Register as 11519 in 1911 (original "Endeavour" number was E.470). Unlike much of the "Endeavour" material at WAM (see Introduction), this specimen is obviously one of the 16 on which the type description was based. The species is now known as *Parapriacanthus elongatus*.

### Scorpididae

*Neotypus obliquus* Waite, 1905: 65, Pl. X.

Syntype — P.13256-001, Houtman Abrolhos, WA.

Remarks. The type description refers to two specimens (larger 152 mm SL), but does not give any registration numbers. Both were sent to AMS from WAM in 1904 (see section on Waite types in the Introduction). One was retained by AMS and is now registered as I.7034 (M. McGrouther, pers. comm.). The other was apparently returned to WAM and eventually registered by McKay in 1965 as P.13256; however, it does not appear in either of his lists of type specimens at WAM (McKay, 1965, 1966a). As we have been unable to locate this syntype, it is here considered to be lost.

### Chaetodontidae

*Chaetodon assarius* Waite, 1905: 66, Pl. XI, Figure 1.

Holotype — P.13255-001, 97 mm SL, off Fremantle, WA.

*Chelmonops curiosus* Kuitert, 1986: 74, Figure 3.

Holotype — P.13745-001, 137 mm SL, near Perth, WA.

Paratypes — P.4342-001, 179 mm SL, Rottneest Island, WA; P.27960-012, 116 mm SL, Kalbarri, WA; P.5322-001, 121 mm SL, Beagle Bay, WA; P.24175-001, 102 mm SL, off Wanneroo, WA; P.25725-002, 78 mm SL, Rottneest Island, WA.

**Pomacanthidae**

*Holacanthus (Chaetodontoplus) personifer* McCulloch, 1914b: 221, Pl. XXXI.

Holotype — P.28592-001, 290 mm TL, Shark Bay, WA.

Remarks. Now known as *Chaetodontoplus personifer*.

**Pentacerotidae**

*Parazanclistius hutchinsi* Hardy, 1983b: 375, Figure 1.

Holotype — P.25718-001, 188 mm SL, Rottneest Island, WA.

Paratypes — P.725-001, 204 mm SL, near Albany, WA; P.16411 001, 278 mm SL, Bunbury, WA.

Remarks. Other paratypes are housed at NMNZ.

*Paristopterus gallipavo* Whitley, 1944b: 28, Figure 4.

Holotype — P.2589-001, 630 mm TL, Rockingham, WA.

**Pomacentridae**

*Abudefduf lorenzi* Hensley and Allen, 1977: 109, Figures 1, 2.

Paratype — P.24924-001, 87 mm SL, Rabaul, New Britain.

*Abudefduf natalensis* Hensley and Randall, 1983: 2, Figures 1, 2, 3a.

Paratypes — P.26529-001, 2 specimens, 130-132 mm SL, Kwazulu, South Africa.

*Amblyglyphidodon flavilatus* Allen and Randall, 1980: 14, Figures 4, 5.

Paratypes — P.25619-001, 2 specimens, 50-56 mm SL, Melita Bay, Ethiopia.

*Amphiprion omanensis* Allen and Mee in Allen, 1991: 220, Figure.

Paratypes — P.30109-001, 2 specimens 86-93 mm SL, Barr Al Hikman, Oman; P.30108-001, 64 mm SL, Barr Al Hikman, Oman; P.30110-001, 45 mm SL, Sudah Harbour, Oman.

*Amphiprion rubricinctus* Richardson, 1842: 391.

Neotype — P.4474-001, 69 mm SL, Broome, WA.

Remarks. Allen (1972) designated a neotype for this species as Richardson's description was based on a drawing which had subsequently been lost.

*Amphiprion thiellei* Burgess, 1981: 69, Figure.

Paratype — Uncatalogued, 39 mm SL, near Cebu, Philippine Islands.

Remarks. This paratype, although reported in the type description as being housed at WAM, could not be found and must be presumed to be lost.

*Chromis abyssicola* Allen and Randall, 1985b: 242, Figure 1.

Paratypes — P.28421-001, 2 specimens, 111-114 mm SL, Norfolk Island Ridge, Pacific Ocean.

*Chromis alleni* Randall, Ida and Moyer, 1981: 215, Figure 2H, Pl. 1A.

Paratypes — P.25516-001, 5 specimens, 47-62 mm SL, Sesoko jima, Okinawa.

*Chromis alpha* Randall, 1988a: 74, Figure 1.

Paratypes — P.25283-001, 82 mm SL, Viti Levu, Fiji; P.24939-001, 5 specimens, 75-85 mm SL, Tutuba Island, Vanuatu; P.28165-007, 75 mm SL, Rapa Point, PNG; P.27826-025, 3 specimens, 71-75 mm SL, Manus, Admiralty Islands.

Remarks. The type description includes a typographical error: paratypes P.27826-025 are listed twice.



- Chromis caudalis* Randall, 1988a: 76, Figure 2.  
Paratypes — P.26080-003, 75 mm SL, Christmas Island, Indian Ocean; P.26099-012, 68 mm SL, Christmas Island, Indian Ocean.
- Chromis delta* Randall, 1988a: 78, Figure 3.  
Paratype P.26099-026, 40 mm SL, Christmas Island, Indian Ocean.
- Chromis flavipectoralis* Randall, 1988b: 52, Figures 3, 4.  
Paratypes — P.26506-007, 5 specimens, 42-51 mm SL, Andaman Sea, Thailand; P.26514-002, 54 mm SL, North Male Atoll, Maldives Islands.
- Chromis megalopsis* Allen, 1976b: 136, Figure 1.  
Holotype — P.25207-001, 84 mm SL, near Bernier Island, WA.  
Paratype — P.2234-001, 102 mm SL, near Cape Cuvier, WA.
- Chromis nigroanalis* Randall, 1988b: 49, Figures 1, 2.  
Paratypes — P.26517-006, 3 specimens, 67-85 mm SL, near Malindi, Kenya.
- Chromis pelloura* Randall and Allen, 1982: 16, Figures 1-3.  
Paratypes — P.25523-004, 2 specimens, 82-89 mm SL, Eliat, Gulf of Aquaba.
- Chromis trialpha* Allen and Randall, 1980: 33, Figures 18, 19.  
Paratypes — P.25797-001, 2 specimens, 37-40 mm SL, Jeddah, Saudi Arabia.
- Chromis westaustralis* Allen, 1976b: 139, Figure 2.  
Holotype — P.25317-008, 84 mm SL, Houtman Abrolhos, WA.  
Paratypes — P.2789-001, 45 mm SL, Dirk Hartog Island, WA; P.24853-001, 26 mm SL, Albany, WA; P.25307-011, 71 mm SL, P.25308-006, 2 specimens, 50-60 mm SL, P.25317-009, 84 mm SL, all from Houtman Abrolhos, WA; P.25376-002, 50 mm SL, off Tantabiddi Creek, WA.
- Chromis woodsi* Bruner and Arnam, 1979: 50, Figures 1, 2.  
Paratype — P.26020-001, 69 mm SL, Mozambique Channel, Indian Ocean.
- Chromis xanthopterygia* Randall and McCarthy, 1987: 134, Figures 1-3.  
Paratypes — P.25786-002, 6 specimens, 60-76 mm SL, Muscat, Gulf of Oman; P.25991-006, 62 mm SL, Khawrash, Gulf of Oman; P.26460-008, near Khor Fakkan, Gulf of Oman; P.26461-005, 62 mm SL, near Khor Fakkan, Gulf of Oman; P.28787-001, 80 mm SL, Jana Island, Persian Gulf.  
Remarks. The type description includes two typographical errors: paratypes P.25768-002 and P.26461 should read P.25786-002 and P.26461-005 respectively.
- Chromis xutha* Randall, 1988b: 54, Figures 5, 6.  
Paratypes — P.26517-001, 3 specimens, 40-47 mm SL, Watamu, Kenya.
- Chrysiptera sinclairi* Allen, 1987f: 107, Figure 1.  
Holotype — P.27827-056, 42 mm SL, Manus Island, PNG.  
Paratypes — P.27827-010, 14 specimens, 15-49 mm SL, P.27825-042, 5 specimens, 15-31 mm SL, P.27828-002, 5 specimens, 18-32 mm SL, all from Manus Island, PNG.
- Dascyllus flavicaudus* Randall and Allen, 1977: 375, Figure 11.  
Paratypes — P.25578-001, 2 specimens, 63-76 mm SL, Teavaraa Pass, Tahiti.
- Glyphidodontops springeri* Allen and Lubbock, 1976: 347, Figure 1.  
Paratypes — P.25127-001, 3 specimens, 19-34 mm SL, Ceram, Mollucca Islands.  
Remarks. Now known as *Chrysiptera springeri*.

*Neoglyphidodon crossi* Allen, 1991: 221, Figure.

Paratypes — P.25230-007, 4 specimens, 12-76 mm SL, Ambon Island, Indonesia.

*Neopomacentrus miryae* Dor and Allen, 1977: 183, Figure 1.

Paratype — P.25523-002, 45 mm SL, Elat, Red Sea.

*Neopomacentrus xanihurus* Allen and Randall, 1980: 54, Figures 36, 37.

Paratypes — P.25618-001, 5 specimens, 24-41 mm SL, Harat Island, Ethiopia; P.25790-005, 2 specimens, 35-46 mm SL, P.25794-003, 8 specimens, 39-47 mm SL, P.25795-001, 4 specimens, 44-57 mm SL, all from Jeddah, Saudi Arabia.

*Parma bicolor* Allen and Larson, 1979: 12, Figures 1, 3, 4.

Holotype — P.26045-001, 130 mm SL, Recherche Archipelago, WA.

Paratypes — P.26045-002, 115 mm SL, P.26046-001, 128 mm SL, P.25762-005, 131 mm SL, all from Recherche Archipelago, WA; P.25468-001, 126 mm SL, Torbay Head, WA.

Remarks. The type description includes one typographical error: paratype P.26046-007 should read P.26046-001.

*Parma kermadecensis* Allen, 1987g: 267, Figures 1-4.

Paratypes — P.28425-002, 2 specimens, 45-202 mm SL, Raoul Island, Kermadec Islands.

*Parma occidentalis* Allen and Hoese, 1975: 283, Figures 1E, 2F, 15, 16.

Holotype — P.10883-001, 107 mm SL, Rottnest Island, WA.

Paratypes — P.10877-001, 93 mm SL, Rottnest Island, WA; P.10882-001, 110 mm, Rottnest Island, WA; P.10988-001, 42 mm SL, near Carnarvon, WA; P.10940-001, 96 mm SL, Houtman Abrolhos, WA; P.13743-001, 97 mm SL, Houtman Abrolhos, WA; P.24817-001, 2 specimens, 74-94 mm SL, Rottnest Island, WA.

*Plectroglyphidodon randalli* Allen, 1991: 221, Figure.

Holotype — P.26519-001, 68 mm SL, near Flic en Flac, Mauritius.

Paratypes — P.26519-003, 4 specimens, 56-64 mm SL, near Flic en Flac, Mauritius.

*Pomacentrus adelus* Allen, 1991: 222, Figure.

Holotype — P.29042-009, 57 mm SL, Ashmore Reef, Timor Sea.

Paratypes — P.28194-016, 51 mm SL, Daru Island, PNG; P.26505-002, 8 specimens, 54-64 mm SL, Phuket, Thailand; P.27658-029, 17 specimens, 20-50 mm SL, Rowley Shoals, WA; P.29042-032, 15 specimens, 26-60 mm SL, Ashmore Reef, Timor Sea.

*Pomacentrus alleni* Burgess, 1981: 68.

Paratypes — P.26506-009, 8 specimens, 40-45 mm SL, Similan Islands, Thailand.

*Pomacentrus aquilus* Allen and Randall, 1980: 68, Figures 45-47.

Paratypes — P.25527-010, 3 specimens, 63-80 mm SL, Elat, Red Sea.

*Pomacentrus arabicus* Allen, 1991: 223, Figure.

Holotype — P.25786-003, 92 mm SL, Muscat, Oman.

Paratypes — P.25786-005, 5 specimens, 64-79 mm SL, Muscat, Oman; P.25989-005, 3 specimens, 73-98 mm SL, Mutrah, Oman.

*Pomacentrus arenarius* Allen, 1987c: 9: Figure 1.

Holotype — P.27465-001, 68 mm SL, Escape Reef, Qld.

Paratypes — P.27461-004, 44 mm SL, Escape Reef, Qld; P.25107-008, 2 specimens, 62-68 mm SL, Dampier Archipelago, WA; P.25371-004, 2 specimens, 60-74 mm SL, off Tantabiddi Creek, WA; P.28161-002, 54 mm SL, New Ireland, PNG; P.24940-001, 88 mm SL, Bogacio Island, Vanuatu.

*Pomacentrus auriventris* Allen, 1991: 224, Figure.

Holotype — P.26126-006, 36 mm SL, Flying Fish Cove, Christmas Island, Indian Ocean.

Paratypes — P.28994-012, 2 specimens, 31-34 mm SL, Christmas Island, Indian Ocean.

*Pomacentrus azuremaculatus* Allen, 1991: 225, Figure.

Paratypes — P.26506-004, 3 specimens, 47-69 mm SL, Similan Islands, Thailand.

*Pomacentrus baenschi* Allen, 1991: 226, Figure.

Holotype — P.26515-008, 66 mm SL, off Shimoni, Kenya.

*Pomacentrus colini* Allen, 1991: 227, Figure.

Holotype — P.29356-002, 64 mm SL, Motupore Island, PNG.

Paratypes — P.29356-001, 4 specimens, 45-58 mm SL, Motupore Island, PNG.

*Pomacentrus cuneatus* Allen, 1991: 228, Figure.

Paratypes — P.25244-001, 8 specimens, 35-65 mm SL, Molucca Islands, Indonesia; P.25232-001, 5 specimens, 24-71 mm SL, Molucca Islands, Indonesia.

*Pomacentrus indicus* Allen, 1991: 229, Figure.

Holotype — P.26514-004, 74 mm SL, North Male Atoll, Maldives.

Paratypes — P.29361-001, 2 specimens, 67-75 mm SL, Diego Garcia Atoll, Chagos Archipelago; P.26514-007, 5 specimens, 37-65 mm SL, North Male Atoll, Maldives.

*Pomacentrus javanicus* Allen, 1991: 230, Figure.

Paratypes — P.25248-001, 2 specimens, 24-45 mm SL, Seribu Islands, Indonesia.

*Pomacentrus leptus* Allen and Randall, 1980: 74, Figures 48, 49.

Paratypes — P.25786-001, 4 specimens, 39-54 mm SL, near Muscat, Oman; P.26460-010, 34 mm SL, P.26461-010, 2 specimens, 32-38 mm SL, all from near Khor Fakkan, Gulf of Oman. Remarks. The type description includes two incorrect registration numbers: paratypes P.25998-010 and P.25999-010 should read P.26460-010 and P.26461-010 respectively.

*Pomacentrus polyspinus* Allen, 1991: 230, Figure.

Paratypes — P.26504-010, 4 specimens, 47-56 mm SL, off Phuket, Thailand.

*Pomacentrus proteus* Allen, 1991: 231, Figure.

Holotype — P.26509-011, 71 mm SL, Colombo, Sri Lanka.

Paratypes — P.26509-007, 4 specimens, 39-66 mm SL, Colombo, Sri Lanka.

*Pomacentrus similis* Allen, 1991: 232, Figure.

Holotype — P.26511-001, 47 mm SL, Trincomalee, Sri Lanka.

Paratype — P.26504-003, 38 mm SL, near Phuket Island, Andaman Sea.

Remarks — The type description includes a typographical error: holotype P.16511-001 should read P.26511-001.

*Pomacentrus xanthosternus* Allen, 1991: 233, Figure.

Paratypes — P.25248-002, 2 specimens, 64-71 mm SL, Seribu Islands, Indonesia.

*Stegastes baldwini* Allen and Woods, 1980: 183, Figure 7.

Paratypes — P.25547-001, 10 specimens, 48-85 mm SL, Clipperton Island, Eastern Pacific.

*Stegastes insularis* Allen and Emery, 1985: 19, Pl. II F, G.

Holotype — P.26083-044, 83 mm SL, Christmas Island, Indian Ocean.

Paratypes — P.10873-001, 55 mm SL, P.10868-001, 65 mm SL, P.26088-005, 4 specimens, 32-44 mm SL, P.26093-006, 71 mm SL, P.26110-010, 4 specimens, 22-39 mm SL, P.26120-006, 59 mm SL, all from Christmas Island, Indian Ocean.

*Stegastes peliciery* Allen and Emery, 1985: 27, Pl. III G, H.

Holotype — P.26522-002, 88 mm SL, off Flic en Flac village, Mauritius.

Paratypes — P.26520-002, 3 specimens, 44-65 mm SL, P.26522-001, 2 specimens, 45-81 mm SL, all collected at the type locality.

#### **Aplodactylidae**

*Aplodactylus westralis* Russell, 1987: 85, Figure 1.

Paratypes — P.4728-001, 235 mm SL, Wilsons Inlet, WA; P.21799-001, 300 mm SL, Cheynes Beach, WA; P.5877-001, 530 mm SL, Busselton, WA; P.25931-001, 347 mm SL, Geographe Bay, WA; P.25930-001, 335 mm SL, Fremantle, WA.

#### **Cheilodactylidae**

*Cheilodactylus pixi* Smith, 1980: 2, Pls 1A, B.

Paratype — P.26839-001, 125 mm SL, Algoa Bay, South Africa.

*Cheilodactylus rubrolabiatu*s Allen and Heemstra, 1976: 313, Figures 1, 2.

Holotype — P.25225-001, 182 mm SL, Woodmans Point, WA.

Paratypes — P.4879-001, 233 mm SL, Rottne

st Island, WA; P.5562-001, 201 mm SL, Rottne

st Island, WA; P.5925-001, 127 mm SL, Trigg Island, WA; P.10529-001, 41 mm SL, Mauds Landing, WA; P.22244-001, 64 mm SL, Rottne

st Island, WA; P.22580-001, 112 mm SL, Rockingham, WA; P.25255-003, 2 specimens, 93-95 mm SL, Cape Clairault, WA; P.25473-001, 35 mm SL, Albany, WA.

Remarks. Paratype P.22244-001 could not be located and is presumed lost.

#### **Mugilidae**

*Aldrichetta forsteri nonpilcharda* Whitley, 1951: 66.

Holotype — P.2690-001, 45 mm SL, Bunbury, WA.

Remarks. Whitley's brief description of this subspecies includes reference to a more detailed description and figure (Whitley, 1945). The latter description was based on a single specimen which, by the subsequent designation of Whitley (1951), became the holotype. The name is currently considered to be a junior synonym of *A. forsteri* (Valenciennes, 1836).

*Moolgarda (Planiliza) ordensis* Whitley, 1945: 17, Figure 9.

Holotype — P.2758-001, 390 mm TL, Ord River, WA.

Remarks. This name is a junior synonym of *Liza alata* (Steindachner, 1892) (J. Thompson, pers. comm.).

#### **Polynemidae**

*Polydactylus auratus* McKay, 1970: 9.

Holotype — P.16792-001, 115 mm SL, Napier Broome Bay, WA.

Paratypes — P.16793-001, 109 mm SL, Napier Broome Bay, WA; P.16794-001, 131 mm SL, Admiralty Gulf, WA; P.16795-001, 100 mm SL, Admiralty Gulf, WA.

Remarks. This name is a junior synonym of *P. multiradiatus* (Günther, 1860).

#### **Labridae**

*Choerodon cauteroma* Gomon and Allen, 1987: 25.

Holotype — P.25508-042, 203 mm SL, Exmouth Gulf, WA.

Paratypes — P.24259-001, 195 mm SL, Dampier Archipelago, WA; P.25095-038, 6 specimens, 98-144 mm SL, Exmouth Gulf, WA; P.25372-001, 3 specimens, 90-104 mm SL, Exmouth Gulf, WA.

*Choerodon sugillatum* Gomon, 1987: 19.

Paratypes — P.25354-023, 6 specimens, 133-149 mm SL, Monte Bello Islands, WA.

*Choerophilus brownfieldi* Whitley, 1945: 28, Figure 13.

Holotype — P.110-001, 125 mm SL, Garden Island, WA.

Remarks. Now known as *Halichoeres brownfieldi*.

*Cirrhilabrus laboutei* Randall and Lubbock, 1982: 2, Pls IA, B.

Paratype — P.24952-001, 65 mm SL, Loyalty Islands, New Caledonia.

*Cirrhilabrus lineatus* Randall and Lubbock, 1982: 6, Pl. IC.

Paratype — P.27047-001, 22 mm SL, Grand Recif Ouest, New Caledonia.

*Cirrhilabrus lubbocki* Randall and Carpenter, 1980: 18, Figures 2-6.

Paratypes — P.25517-001, 56 mm SL, P.25517-002, 45 mm SL, both from Cebu, Philippine Islands.

*Cirrhilabrus punctatus* Randall and Kuiter, 1989: 44, Figures 1-6.

Paratype — P.27073-024, 73 mm SL, Byron Bay, NSW.

*Connella apterygia* Allen, 1983c: 44, Figures 1, 2.

Holotype — P.27659-006, 55 mm SL, Rowley Shoals, WA.

Paratypes — P.27668-003, 58 mm SL, P.27668-015, 31 mm SL (c/s), both from Rowley Shoals, WA.

*Coris pictoides* Randall and Kuiter, 1982: 160, Pl. 1A, Figure 1.

Paratypes — P.25109-003, 64 mm SL, P.25110-003, 65 mm SL, both from Dampier Archipelago, WA.

*Dotalabrus alleni* Russell, 1988: 10, Figure 2, Pls IC, 1D.

Holotype — P.25252-006, 74 mm SL, off Carnac Island, WA.

Paratypes — P.25195-004, 2 specimens, 64-72 mm SL, Bunker Bay, WA; P.25251-018, 6 specimens, 38-80 mm SL, Rottneest Island, WA.

*Halichoeres chrysus* Randall, 1980b: 416, Figures 1, 2.

Paratypes — P.26851-001, 47 mm SL, Cebu, Philippine Islands; P.26082-004, 3 specimens, 29-53 mm SL, P.26087-009, 4 specimens, 28-60 mm SL, P.26099-019, 50 mm SL, all from Christmas Island, Indian Ocean.

Remarks. The type description includes a typographical error: paratype P.26850-001 should read P.26851-001.

*Halichoeres melasmapomus* Randall, 1980b: 421, Figures 3, 4.

Paratype — P.25233-006, 80 mm SL, Ambon, Indonesia.

*Labropsis alleni* Randall, 1981: 131, Pl. 1A.

Paratype — P.26906-001, 49 mm SL, Madang, PNG.

*Labropsis xanthonota* Randall, 1981: 138, Pls 2A-C.

Paratype — P.26085-003, 100 mm SL, Christmas Island, Indian Ocean.

*Pictilabrus viridis* Russell, 1988: 38, Figure 8, Pls 4E, 4F.

Paratypes — P.24859-001, 2 specimens, 96-120 mm SL, King George Sound, WA; P.25178-004, 2 specimens, 75-80 mm SL, Rottneest Island, WA.

*Pseudojuloides elongatus* Ayling and Russell, 1977: 174, Figures 4-6, 8-10.

Paratypes — P.25110-001, 3 specimens, 88-97 mm SL, Dampier Archipelago, WA; P.25318-007, 106 mm SL, P.25318-008, 112 mm SL, both from Houtman Abrolhos, WA.

*Suezichthys cyanolaemus* Russell, 1985: 13, Pls II, C, D, Figures 2, 7a.

Paratypes — P.25311-002, 5 specimens, 39-67 mm SL, P.25316-003, 43 mm SL, all from Houtman Abrolhos, WA.

#### Odacidae

*Odax cyanoallix* Ayling and Paxton, 1983: 96, Figures 1-3.

Paratypes — P.26648-001, 3 specimens, 91-258 mm SL, Three Kings Islands, NZ.

*Parodax caninis* Scott, 1976: 367, Figure 6.

Holotype — P.25346-002, 74 mm SL, off Fremantle, WA.

Paratypes — P.25251-019, 72 mm SL, Rottnest Island, WA; P.25252-009, 59 mm SL, Carnac Island, WA; P.25343-010, 48 mm SL, off Fremantle, WA; P.25498-001, 80 mm SL, Rottnest Island, WA.

Remarks. Now known as *Siphonognathus caninis* (see Gomon and Paxton, 1985).

*Siphonognathus tanyourus* Gomon and Paxton, 1985: 51, Pls VI D, E, Figures 5b, 9i, 16l, 20, 21.

Paratypes — P.28296-028, 7 specimens, 45-72 mm SL, Mondrain Island, WA; P.28300-018, 83 mm SL, Lucky Bay, WA.

#### Scaridae

*Scarus chameleon* Choat and Randall, 1986: 199, Pls 3C-D, 9D-H.

Paratype — P.28275-001, 168 mm SL, Lizard Island, Qld.

#### Opisthognathidae

*Tandya reticulata* McKay, 1968: 1, Figure 1.

Holotype — P.15758-001, 385 mm TL, Broome, WA.

Remarks. Now known as *Opisthognathus reticulata*.

#### Pinguipedidae

*Parapercis biordinis* Allen, 1976a: 28, Figure 3.

Holotype — P.25206-001, 70 mm SL, off Point Cloates, WA.

*Parapercis (Neopercis) naevosa* Serventy, 1937: 72, Pl. II.

Holotype — P.1158-001, 116 mm TL, Great Australian Bight.

#### Percophidae

*Bembrops aethalea* McKay, 1971: 42, Figure 2.

Holotype — P.19144-001, 177 mm SL, Indian Ocean, off north-western Australia.

Paratypes — P.19142-001, 179 mm SL, P.19143-001, 180 mm SL, P.19145-001, 183 mm SL, P.19146-001, 138 mm SL, P.19147-001, 144 mm SL, P.19148-001, 179 mm SL, P.19149-001, 175 mm SL, P.19150-001, 170 mm SL, P.19151-001, 121 mm SL, all from the Indian Ocean, off north-western Australia.

*Bembrops indica* McKay, 1971: 43, Figure 3.

Holotype — P.19138-001, 162 mm SL, Indian Ocean, off north-western Australia.

Paratypes — P.19137-001, 158 mm SL, P.19139-001, 80 mm SL, P.19140-001, 192 mm SL, P.19141-001, 119 mm SL, P.19162-001, 99 mm SL, P.19163-001, 172 mm SL, all from the Indian Ocean, off north-western Australia.

*Branchiopsaron ozawai* McKay, 1971: 41, Figures 1, 1a-b.

Holotype — P.19153-001, 106 mm SL, Indian Ocean, off north-western Australia.

Paratypes — P.19152-001, 108 mm SL, P.19154-001, 86 mm SL, P.19155-001, 93 mm SL, P.19156-001, 70 mm SL, P.19157-001, 66 mm SL, P.19158-001, 57 mm SL, all from Indian Ocean, off north-western Australia.

*Chrionema chlorotaenia* McKay, 1971: 44, Figure 4.

Holotype — P.19136-001, 194 mm SL, Indian Ocean, off north-western Australia.

Paratypes — P.19129-001, 187 mm SL, P.19130-001, 187 mm SL, P.19131-001, 175 mm SL, P.19132-001, 193 mm SL, P.19133-001, 169 mm SL, P.19134-001, 156 mm SL, P.19135-001, 131 mm SL, all from Indian Ocean, off north-western Australia.

### Creediidae

*Creedia alleni* Nelson, 1983: 29, Figure 1.

Holotype — P.25808-005, 40 mm SL, off Garden Island, WA.

Paratypes — P.25346-028, 34 mm SL, P.25347-001, 28 mm SL, both from Carnac Island, WA.

*Limnichthys fasciatus major* Whitley, 1945: 31.

Holotype — P.121-001, 50 mm SL, Garden Island, WA.

Remarks. This name is considered to be a junior synonym of *L. fasciatus* (see Nelson, 1983).

### Uranoscopidae

*Gnathagnus cribratus* Kishimoto, 1989: 305, Figure 1.

Holotype — P.28071-009, 197 mm SL, near Rowley Shoals, WA.

Paratypes — P.28071-026, 2 specimens, 124-131 mm SL, P.28086-007, 120 mm SL, all from near Rowley Shoals, WA.

*Gnathagnus elongatus australiensis* Kishimoto, 1989: 310, Figure 2.

Paratypes — P.19119-001, 213 mm SL, Timor Sea; P.28072-006, 2 specimens, 155-159 mm SL, P.28086-001, 2 specimens, 141-202 mm SL, all from near Rowley Shoals, WA.

*Ichthyscopus barbatus* Mees, 1960: 49, Figures 3, 4, 5a.

Holotype — P.4338-001, 340 mm SL, Rottneest Island, WA.

Paratypes — P.672-001, 200 mm SL, Woodmans Point, WA; P.1296-001, 147 mm SL, Busselton, WA; P.3488-001, 325 mm SL, Dunsborough, WA; P.4424-001, 300 mm SL, Eagle Bay, WA; P.4431-001, 2 specimens, 105-124 mm SL, Rottneest Island, WA.

*Ichthyscopus insperatus* Mees, 1960: 54, Figures 8, 9.

Holotype — P.3638-001, 170 mm SL, Roebuck Bay, WA.

*Ichthyscopus spinosus* Mees, 1960: 48, Figures 1, 2.

Holotype — P.3639-001, 258 mm SL, near Broome, WA.

### Blenniidae

*Cirripectes chelomatus* Williams and Maugé, 1983: 1140, Figures 1, 2.

Paratypes — P.27754-001, 2 specimens, 58-70 mm SL, One Tree Island, Qld.

*Cirripectes gilberti* Williams, 1988: 41, Pls III D,E, Figures 14, 15.

Paratypes — P.29331-012, 2 specimens, 32-62 mm SL, Christmas Island, Indian Ocean.

*Cirripectes hutchinsi* Williams, 1988: 44, Pls III F-H.

Holotype — P.25744-003, 89 mm SL, Rottneest Island, WA.

Paratypes — P.4652-001, 98 mm SL, Houtman Abrolhos, WA; P.4647-001, 73 mm SL, Point Quobba, WA; P.25317-002, 2 specimens, 90-106 mm SL, Houtman Abrolhos, WA; P.25374-042, 69 mm SL, off Tantabiddi Creek, WA; P.25744-005, 53 mm SL, Rottneest Island, WA; P.25758-010, 73 mm SL, Rottneest Island, WA; P.26072-003, 2 specimens, 32-52 mm SL, Houtman Abrolhos, WA; P.26657-009, 3 specimens, 34-70 mm SL, Shark Bay, WA; P.26626-001, 76 mm SL, North West Cape, WA.

*Dasson duperreyi* Whitley, 1945: 31.

Holotype — P.2152-001, 89 mm SL, Shark Bay, WA.

Paratype — P.2153-001, 50 mm SL, Shark Bay, WA.

Remarks. This name is a junior synonym of *Petroscirtes breviceps* (Valenciennes, 1836) (see Smith-Vaniz, 1976).

*Ecsenius alleni* Springer, 1988: 81, Figure 42, Pl. 12, Figure 2.

Holotype — P.27666-017, 28 mm SL, Mermaid Reef, WA.

Paratypes — P.27656-021, 32 mm SL, P.27658-013, 27 mm SL, P.27659-009, 4 specimens, 24-32 mm SL, P.27662-026, 2 specimens, 30-33 mm SL, P.27663-010, 26 mm SL, P.27665-001, 4 specimens, 28-32 mm SL, P.27668-014, 26 mm SL, P.28022 048, 19 specimens, 22-34 mm SL, all from Clerke Reef, WA.

Remarks. The type description includes a typographical error: paratype P.27660-009 should read P.27659-009.

*Ecsenius axelrodi* Springer, 1988: 84, Figure 44, Pl. 10, Figures 1-3.

Paratypes — P.28182-004, 2 specimens, 20-34 mm SL, Rabaul, New Britain.

*Ecsenius oculatus* Springer, 1988: 60, Figure 32c, Pl. 7, Figure 1.

Holotype — P.25368-023, 44 mm SL, off Tantabiddi Creek, WA.

Paratypes — P.25368-037, 3 specimens, 32-37 mm SL, off Tantabiddi Creek, WA; P.25374-018, 9 specimens, 26-33 mm SL, off Tantabiddi Creek, WA; P.25813-050, 24 mm SL, South Murion Island, WA; P.26102-005, 26 mm SL, Christmas Island, Indian Ocean; P.26110-004, 24 specimens, 18-36 mm SL, Christmas Island, Indian Ocean; P.26670-006, 3 specimens, 39-47 mm SL, Dirk Hartog Island, WA; P.27961-014, 53 mm SL, Point Quobba, WA; P.27970-041, 39 mm SL, Point Quobba, WA.

Remarks. The type description includes paratypes with the same registration number as the holotype. This has been changed to P.25368-037.

*Ecsenius taeniatus* Springer, 1988: 112, Figure 60.

Paratypes — P.24913-001, 32 mm SL, Goodenough Island, PNG.

*Graviceps alexanderi* Whitley, 1945: 33.

Holotype — P.671-001, 32 mm SL, Fremantle, WA.

Paratypes — P.398-001, 47 mm SL, Houtman Abrolhos, WA; P.671-002, 34 mm SL, Fremantle, WA.

Remarks. The type description also provides the particulars of three specimens from the Houtman Abrolhos, P.395-001, which are referred to as "perhaps the male of the species". However, it appears that these specimens, along with five others from the same area



(P.396-001), were treated by Whitley as comparative material only, and were therefore not part of the type series. This name is considered by Springer and Gomon (1975) to be a junior synonym of *Omobranchus germaini* (Sauvage, 1883).

*Meiakanthus (Meiakanthus) limbatus* Smith-Vaniz, 1987: 19, Figure 7c.

Holotype — P.27826-018, 37 mm SL, Los Negros Island, PNG.

*Meiakanthus (Meiakanthus) naevius* Smith-Vaniz, 1987: 20, Figures 7d.

Holotype — P.28030-017, 36 mm SL, Rowley Shoals, WA.

*Parablennius tasmaniensis postoculomaculatus* Bath and Hutchins, 1986: 187, Figures 24-28, 29a-r.

Paratypes — P.25850-008, 10 specimens, 16-45 mm SL, Houtman Abrolhos, WA.

#### **Tripterygiidae**

*Ceratobregma helenae* Holleman, 1987: 175, Figure 2.

Holotype — P.26098-012, 29 mm SL, Christmas Island, Indian Ocean.

Paratypes — P.26090-011, 29 mm SL, P.26113-018, 26 mm SL, P.26092-021, 5 specimens, 20-28 mm SL, P.26110-015, 2 specimens, 24-29 mm SL, P.26122-011, 27 mm SL, P.26080-017, 2 specimens, 26-28 mm SL, P.26098-007, 3 specimens, 27-29 mm SL, all from Christmas Island, Indian Ocean.

*Norfolkia cristata* Kuitert, 1985: 92, Figures 4, 5.

Paratypes — P.27136-016, 3 specimens, 28-35 mm SL, Victor Harbour, SA.

*Norfolkia incisa* Kuitert, 1985: 93, Figures 6, 7.

Paratypes — P.27123-012, 4 specimens, 24-28 mm SL, Wilsons Promontory, Vic; P.26005-010, 7 specimens, 21-28 mm SL, Recherche Archipelago, WA.

*Brachynectes fasciatus* Scott, 1957: 181, Figure 1.

Paratypes(?) — P.4846, 2 specimens, 38-40 mm SL, Kangaroo Island, SA.

Remarks. These specimens were recorded as paratypes in the WAM Fish Catalogue; however, Scott (1957) clearly stated that only one specimen, the holotype, was used for the type description. These two were obviously part of the additional material examined, and therefore have no type status.

*Vauclusella calva* Whitley, 1944a: 272.

Holotype — P.1052-001, 37 mm TL, Cottesloe, WA.

Paratype — P.1052-002, 39 mm TL, Cottesloe, WA.

#### **Clinidae**

*Clinus eckloniae* McKay, 1970: 16, Figure 1.

Holotype — P.16785-001, 73 mm SL, near Albany, WA.

Paratype — P.16786-001, 39 mm SL, Rottneest Island, WA.

Remarks. Now known as *Heteroclinus eckloniae* (D.F. Hoese, pers. comm.).

*Petraites equiradiatus* Milward, 1960: 134.

Holotype — P.4472-001, 97 mm TL, Rottneest Island, WA.

Remarks. Now known as *Heteroclinus equiradiatus* (D.F. Hoese, pers. comm.).

*Ophiclinops hutchinsi* George and Springer, 1980: 9, Figure 2.

Holotype — P.26004-008, 89 mm SL, Lucky Bay, WA.

Paratypes — P.26454-001, 2 specimens, 50-52 mm SL, P.26003-016, 31 mm SL, all from Lucky Bay, WA.

*Ophiclinus brevipinnis* George and Springer, 1980: 17, Figure 6.

Paratype — P.26000-022, 59 mm SL, Lucky Bay, WA.

*Ophiclinus ningulus* George and Springer, 1980: 22, Figure 10.

Holotype — P.26009-015, 44 mm SL, Lucky Bay, WA.

*Ophiclinus pectoralis* George and Springer, 1980: 23, Figures 11, 12.

Holotype — P.25770-006, 52 mm SL, Recherche Archipelago, WA.

Paratypes — P.26008-008, 2 specimens, 31-40 mm SL, Recherche Archipelago, WA; P.25758-015, 31 mm SL, Rottneest Island, WA.

### Callionymidae

*Callionymus (Spinicapitichthys) csiro* Fricke, 1983: 457, Figure 135.

Holotype — P.11212-001, 29 mm SL, Carnarvon, WA.

*Callionymus (Calliurichthys) margaretae australis* Fricke, 1983: 402, Figures 118, 119.

Paratype — P.11841-001, 67 mm SL, Shark Bay, WA.

*Calliurichthys goodladi* Whitley, 1944a: 270.

Holotype — P.2528-001, 131 mm SL, Cheyne Beach, WA.

Paratypes — P.2541-001 to P.2543-001, 3 specimens, 117-126 mm TL, Shark Bay, WA.

Remarks. Now known as *Callionymus goodladi* (see Fricke, 1983).

*Synchiropus (Synchiropus) moyeri* Zaiser and Fricke, 1985: 389, Figures 1, 2.

Paratype — P.28366-001, 33 mm SL, Igaya Bay, Japan.

*Synchiropus (Synchiropus) picturatus occidentalis* Fricke, 1983: 653, Figure 202.

Holotype — P.22027-001, 45 mm SL, Dampier Archipelago, WA.

Paratypes — P.22028-001, 44 mm SL, P.22029-001, 46 mm SL, both from Dampier Archipelago, WA.

### Draconettidae

*Liopsaron insolitum* McKay, 1971: 45, Figures 5, 5a.

Holotype — P.19164-001, 93 mm SL, off north-western Australia.

Paratypes — P.19165-001, 87 mm SL, P.19166-001, 71 mm SL, both from off north-western Australia.

Remarks. This species was originally described as a member of the Percophidae; it is here included in the Draconettidae following Nakabo (1982). It is now known as *Centrodraco insolitus*.

### Gobiesocidae

*Alabes brevis* Springer and Fraser, 1976: 19.

Holotype — P.24385-001, 20 mm TL, Rottneest Island, WA.

Paratypes — P.24386-001, 16 mm TL, P.24387-001, 23 mm TL, Rottneest Island, WA.

*Aspasmogaster occidentalis* Hutchins, 1984: 131, Figures 1, 3, 4, 5.

Holotype — P.27882-001, 66 mm SL, Bunker Bay, WA.

Paratypes — P.25770-022, 3 specimens, 22-80 mm SL, P.25774 008, 55 mm SL, all from Recherche Archipelago, WA; P.26000-013, 23 mm SL, Lucky Bay, WA; P.26002-007, 25 mm SL (c/s), Lucky Bay, WA; P.26007-006, 70 mm SL, P.26009-003, 68 mm SL, both from

Lucky Bay, WA; P.26546-005, 62 mm SL, Saddle Island, WA; P.26620-004, 26 mm SL, Rottnest Island, WA; P.27880-003, 3 specimens, 67-93 mm SL, Lucky Bay, WA.

*Cochleiceps bassensis* Hutchins, 1983: 40, Figures 3b, 4b, 5, 6, 7.

Paratype — P.27750-001, 40 mm SL (c/s), Bass Strait, Tas.

### Gobiidae

*Amblyeleotris randalli* Hoese and Steene, 1978: 382, Figures 1, 2, 3.

Paratype — P.25235-021, 58 mm SL, Ambon, Indonesia.

*Bryaninops amplius* Larson, 1985: 66, Figures 5, 6.

Paratypes — P.25109-002, 3 specimens, 8-16 mm SL, Dampier Archipelago, WA; P.28039-001, 4 specimens, 16-24 mm SL, Linnet Reef, Qld.

*Bryaninops isis* Larson, 1985: 89, Figure 17.

Paratypes — P.28441-001, 18 mm SL, P.28442-001, 16 mm SL, both from Lizard Island, Qld.

*Bryaninops loki* Larson, 1985: 81, Figures 13, 14.

Paratypes — P.28042-001, 2 specimens, 22-24 mm SL, Lizard Island, Qld.

*Bryaninops natans* Larson, 1985: 77, Figures 10-12.

Paratypes — P.27666-012, 12 specimens, 7-12 mm SL, Rowley Shoals, WA; P.28041-001, 8 specimens, 14-17 mm SL, El Himeira, Gulf of Aquaba.

*Bryaninops nexus* Larson, 1987: 139, Figures 1-3.

Paratypes — P.28030-030, 5 specimens, 10-18 mm SL, Rowley Shoals, WA.

*Bryaninops tigris* Larson, 1985: 70, Figures 7, 8.

Paratype — P.28040-001, 17 mm SL, Lizard Island, Qld.

*Drombus halei lepidothorax* Whitley, 1945: 37.

Syntypes — P.2667-001 to P.2673-001, 7 specimens, 29-45 mm SL, Shark Bay, WA.

*Eviota bimaculata* Lachner and Karnella, 1980: 91, Figures 50-52.

Holotype — P.10110-001, 20 mm SL, Rottnest Island, WA.

Paratypes — P.10111-001, 20 mm SL, P.10112-001, 18 mm SL, P.10129-001, 22 mm SL, all from Rottnest Island, WA; P.10445-001 to P.10448-001, 4 specimens, 19-23 mm SL, Garden Island, WA; P.25725-019, 4 specimens, 19-22 mm SL, Rottnest Island, WA.

*Eviota fasciola* Karnella and Lachner, 1981: 268, Figures 2, 3.

Paratypes — P.26843-001, 5 specimens, 11-17 mm SL, One Tree Island, Qld.

*Eviota sigillata* Jewett and Lachner, 1983: 799, Figure 10.

Paratypes — P.27053-001, 3 specimens, 12-18 mm SL, St. Brandon Shoals, Indian Ocean.

*Fusigobius duospilus* Hoese and Reader, 1985: 2, Figures 1, 2.

Paratypes — P.26087-015, 31 mm SL, Christmas Island, Indian Ocean; P.25369-020, 29 mm SL, P.25374-039 38 mm SL, both from off Tantabiddy Creek, WA; P.26662-019, 2 specimens, 24-29 mm SL, P.26671-022, 2 specimens, 27-46 mm SL, all from Shark Bay, WA; P.27584-002, 44 mm SL, P.27587-016, 46 mm SL, P.27590-019, 40 mm SL, all from Houtman Abrolhos, WA; P.25813-024, 3 specimens, 28-35 mm SL, P.25819-025, 2 specimens, 35-42 mm SL, all from South Murion Island, WA.

Remarks. The type description includes one typographical error: P.27596-019 should read P.27590-019.

*Glossogobius coatesi* Hoese and Allen, 1990: 118, Figures 1, 2, 5a.

Holotype — P.29620-009, 97 mm SL, Ramu River, PNG.

Paratypes — P.27847-009, 5 specimens, 24-79 mm SL, Kwatit River, PNG; P.29617-001, 3 specimens, 42-51 mm SL, near Ramu River, PNG; P.29620-006, 9 specimens, 15-83 mm SL, Ramu River, PNG.

*Glossogobius hoesei* Allen and Boesman, 1982: 84, Figures 4, 5.

Paratypes — P.27387-001, 10 specimens, 50-65 mm SL, Vogelkop Peninsula, Irian Jaya.

*Glossogobius torrentis* Hoese and Allen, 1990: 122, Figures 3, 4, 5b.

Holotype — P.29615-009, 70 mm SL, near Ramu River, PNG.

Paratypes — P.29614-007, 40 specimens, 15-56 mm SL, P.29615 002, 49 specimens, 17-71 mm SL, P.29619-006, 3 specimens, 26-44 mm SL, all from near Ramu River, PNG.

*Papillogobius punctatus* Gill and Miller, 1990: 509, Figure 4.

Holotype — P.29724-001, 51 mm SL, Swan-Avon Estuary, WA.

Paratypes — P.29723-001, 5 specimens, 39-43 mm SL, P.29725-001, 38 mm SL, P.29726-001, 5 specimens, 40-53 mm SL, P.29727-001, 43 mm SL, P.29728-001, 2 specimens, 44-45 mm SL, P.29737-001, 6 specimens, 22-35 mm SL (all c/s), all from Swan-Avon Estuary, WA.

*Pleurosicya coerulea* Larson, 1990: 20, Figure 16.

Paratypes — P.28025-044, 36 specimens, 9-16 mm SL, Rowley Shoals, WA; P.29048-007, 11 mm SL, Ashmore Reef, Timor Sea.

*Pleurosicya elongata* Larson, 1990: 22, Figure 17. Pl. IIa.

Paratypes — P.30053-001, 2 specimens, 18-26 mm SL, Port Moresby, PNG.

*Pleurosicya fringilla* Larson, 1990: 25, Figure 18.

Paratypes — P.27596-001, 2 specimens, 13-14 mm SL, Houtman Abrolhos, WA.

*Pleurosicya plicata* Larson, 1990: 41, Figure 25.

Paratype — P.27666-027, 22 mm SL, Rowley Shoals, WA.

*Signigobius biocellatus* Hoese and Allen, 1977: 200, Figures 1, 2, 3, 4a, 5a.

Paratypes — P.24765-001, 48 mm SL, Lizard Island, Qld; P.25539-001, 24 mm SL, Koror Island, Palau.

*Sueviota atrinasa* Winterbottom and Hoese, 1988: 7, Figure 5.

Paratypes — P.28022-054, 3 specimens, 17-20 mm SL, P.28031-036, 15 mm SL, all from Rowley Shoals, WA.

*Trimma dalerocheila* Winterbottom, 1984: 697, Figures 1, 11.

Paratypes — P.27983-001, 5 specimens, 16-17 mm SL, Peros Banhos Atoll, Chagos Archipelago.

*Trimma emeryi* Winterbottom, 1985: 752, Figure 5.

Paratypes — P.28333-001, 14 specimens, 10-18 mm SL, Peros Banhos Atoll, Chagos Archipelago; P.28334-001, 7 specimens, 13-15 mm SL, Salomon Atoll, Chagos Archipelago.

*Trimma haima* Winterbottom, 1984: 702, Figures 3, 17.

Paratypes — P.28015-001, 9 specimens, 10-16 mm SL, Peros Banhos Atoll, Chagos Archipelago.

**Eleotrididae**

*Eleotris aquadulcis* Allen and Coates, 1990: 133, Figures 1, 2.

Holotype — P.29608-006, 205 mm SL, Ramu River System, PNG.

Paratypes — P.28206-007, 9 specimens, 61-183 mm SL, Sepik River, PNG; P.29608-002, 5 specimens, 160-215 mm SL, Ramu River System, PNG.

*Eleotris aurea* Shipway, 1950: 75, Figures 1, 2.

Holotype — P.3283-001, 59 mm TL, Murchison River, WA.

Remarks. Now known as *Hypseleotris aurea* (see Hoese and Allen, 1983).

*Hypseleotris ejuncida* Hoese and Allen, 1983: 255, Figure 6.

Holotype — P.25032-009, 46 mm SL, near Prince Regent River, WA.

Paratypes — P.25032-008, 8 specimens, 23-43 mm SL, near Prince Regent River, WA.

Remarks. The type description includes a typographical error: P.25032-002 should read P.25032-008.

*Hypseleotris kimberleyensis* Hoese and Allen, 1983: 252, Figure 5.

Holotype — P.25454-009, 34 mm SL, Barnett River, WA.

Paratypes — P.25454-007, 6 specimens, 27-34 mm SL, Barnett River, WA; P.25872-006, 4 specimens, 28-34 mm SL, Manning Creek Gorge, WA.

*Hypseleotris regalis* Hoese and Allen, 1983: 250, Figure 4.

Holotype — P.25028-009, 32 mm SL, near Roe River, WA.

Paratypes — P.25028-007, 12 specimens, 23-36 mm SL, near Roe River, WA; P.25040-004, 14 specimens, 22-37 mm SL, Prince Regent River, WA.

*Kimberleyeotris hutchinsi* Hoese and Allen, 1987: 36, Figures 1, 2.

Holotype — P.25684-009, 31 mm SL, near Mitchell River, WA.

Paratypes — P.25684-007, 14 specimens, 25-30 mm SL, near Mitchell River, WA; P.25683-008, 2 specimens, 22-24 mm SL, Mitchell River, WA.

*Kimberleyeotris notata* Hoese and Allen, 1987: 40, Figures 3, 4.

Holotype — P.25427-010, 38 mm SL, Drysdale River, WA.

*Milyeringa veritas* Whitley, 1945: 36, Figure 15.

Holotype — P.2913-001, 40 mm SL, North West Cape, WA.

*Mogurnda cingulata* Allen and Hoese, 1991: 36, Figure 3.

Holotype — P.27806-003, 94 mm SL, upper Fly River, PNG.

Paratypes — P.27388-002, 35 specimens, 32-115 mm SL, Digul River, PNG; P.27793-004, 2 specimens, 20-50 mm SL, upper Fly River, PNG; P.27794-003, 46 mm SL, near Kiunga, PNG; P.27799-008, 2 specimens, 29-36 mm SL, near Ningerum, PNG; P.27807-003, 57 mm SL, near Kiunga, PNG; P.27808-005, 5 specimens, 35-65 mm SL, near Kiunga, PNG; P.27812-007, 81 mm SL, Nomad River, PNG.

*Mogurnda furva* Allen and Hoese, 1986: 83, Figures 3, 4.

Holotype — P.28158-009, 65 mm SL, Lake Kutubu, PNG.

Paratypes — P.28158-011, 2 specimens, 19-31 mm SL, Lake Kutubu, PNG.

*Mogurnda kutubuensis* Allen and Hoese, 1986: 86, Figures 6, 7.

Holotype — P.28159-011, 87 mm SL, Lake Kutubu, PNG.

Paratypes — P.28158-008, 30 specimens, 21-68 mm SL, P.28159-008, 112 specimens, 16-77 mm SL, all from Lake Kutubu, PNG.

- Mogurnda lineata* Allen and Hoese, 1991: 39, Figure 4.  
Holotype — P.27790-008, 81 mm SL, Kali Creek, PNG.  
Paratypes — P.27790-005, 21 specimens, 20-77 mm SL, Kali Creek, PNG.
- Mogurnda orientalis* Allen and Hoese, 1991: 41, Figure 5.  
Holotype — P.27785-004, 102 mm SL, Safia Creek, PNG.  
Paratypes — P.27784-003, 3 specimens, 63-70 mm SL, Moni River, PNG.
- Mogurnda spilota* Allen and Hoese, 1986: 90, Figures 8, 9.  
Holotype — P.28159-010, 90 mm SL, Lake Kutubu, PNG.  
Paratype — P.28158-010, 56 mm SL, Lake Kutubu, PNG.
- Mogurnda vitta* Allen and Hoese, 1986: 95, Figures 12, 13.  
Holotype — P.28159-012, 104 mm SL, Lake Kutubu, PNG.  
Paratype — P.28159-013, 55 mm SL, Lake Kutubu, PNG.
- Oxyeleotris wisselensis* Allen and Boeseman, 1982: 90, Figures 6, 7.  
Paratypes — P.27389-001, 17 specimens, 26-82 mm SL, Wissel Lakes, Irian Jaya.
- Ptereleotris monopectera* Randall and Hoese, 1985: 24, Pl. IIIC, D. Figure 8.  
Paratypes — P.28449-001, 84 mm SL, Moorea, Society Islands; P.25236-017, 58 mm SL, Ambon, Indonesia; P.27077-002, 74 mm SL, NW Solitary Island, NSW.  
Remarks. The type description includes a typographical error: the measurement for paratype P.25236-017 is given as 580 mm SL, whereas it should be 58 mm SL.
- Thalasseleotris adela* Hoese and Larson, 1987: 45, Figures 1-4.  
Paratypes — P.27542-004, 18 mm SL, P.27543-015, 30 mm SL, both from Port Davey, Tas; P.27544-014, 4 specimens, 21-22 mm SL, P.27546-012, 8 specimens, 13-22 mm SL, P.27547-009, 6 specimens, 22-25 mm SL, all from Port Esperance, Tas; P.27459-015, 3 specimens, 22-23 mm SL, Port Aurthur, Tas; P.27554-018, 4 specimens, 19-22 mm SL, Spring Bay, Tas; P.27555-011, 4 specimens, 19-20 mm SL, St. Helens, Tas; P.27564-014, 4 specimens, 13-21 mm SL, Bridport, Tas; P.27136-015, 3 specimens, 21-25 mm SL, Victour Harbour, SA; P.26060-016, 2 specimens, 16-20 mm SL, P.26616-025, 2 specimens, both 24 mm SL, P.26620-023, 3 specimens, 15-20 mm SL, P.27616-033, 20 mm SL, all from Rottneest Island, WA; P.25770-023, 24 mm SL, P.26005-011, 20 mm SL, P.28293-033, 9 specimens, 15-22 mm SL, P.28296-047, 6 specimens, 19-25 mm SL, P.28297-026, 2 specimens, 12-22 mm SL, P.28298-017, 21 mm SL, P.28300-028, 3 specimens, 12-23 mm SL, all from Recherche Archipelago, WA.  
Remarks. The type description includes four typographical errors: paratypes P.27543-005 should be P.27543-015, P.27547-007 should be P.27547-009, P.25570-022 should be P.25770-023, and P.28297-025 should be P.28297-026.

#### Microdesmidae

- Aiolioptis tetrophthalmus* Rennis and Hoese, 1987: 79, Figures 15, 16.  
Paratypes — P.28454-001, 2 specimens, 15-20 mm SL, Lizard Island, Qld.
- Parioglossus marginalis* Rennis and Hoese, 1985: 179, Figures 9, 23, 34.  
Paratypes — P.28011-001, 3 specimens, 32-33 mm SL, Port Hacking, NSW.
- Ptereleotris monopectera* Randall and Hoese, 1985: 24, Pl. IIIC, D. Figure 8.  
Paratypes — P.28449-001, 84 mm SL, Moorea, Society Islands; P.25236-017, 58 mm SL,

Ambon, Indonesia; P.27077-002, 74 mm SL, NW Solitary Island, NSW.

Remarks. The type description includes a typographical error: the measurement for paratype P.25236-017 is given as 580 mm SL, whereas it should be 58 mm SL.

#### Acanthuridae

*Acanthurus albipectoralis* Allen and Ayling, 1987: 15, Figure 1.

Paratype — P.28537-001, 261 mm SL, West Herald Cay, Coral Sea Territory.

#### Siganidae

*Siganus trispilos* Woodland and Allen, 1977: 617, Figure 1.

Holotype — P.25366-001, 155 mm SL, off Tantabiddy Creek, WA.

Paratype — P.25542-003, 152 mm SL, off Tantabiddy Creek, WA.

#### Trichiuridae

*Evoxymetopon anzac* Alexander, 1917: 104, Figure 1.

Holotype — P.352-001, 1415 mm TL, North Fremantle, WA.

#### Scombridae

*Rastrelliger serventyi* Whitley, 1944a: 268.

Holotype — P.181-001, 270 mm TL, Port Headland, WA.

Remarks. The type description includes a typographical error: P.18 should read P.181. This name is a junior synonym of *R. kanagurta* (Cuvier, 1817) (see Collette and Nauen, 1983).

#### Soleidae

*Synaptura hediste* Mees, 1964b: 49, Pl. IV.

Holotype — P.5532-001, 126 mm SL, King George Sound, WA.

Paratypes — P.5533-001, 117 mm SL, Albany, WA; P.5534-001, 126 mm SL, St. Vincent Gulf, SA.

#### Cynoglossidae

*Cynoglossus broadhursti* Waite, 1905: 73, Pl. viii, Figure 2.

Syntype — P.13258-001, 255 mm TL, between Fremantle and Geraldton, WA.

Remarks. Waite's description was based on five specimens sent to AMS from WAM (see section on Waite's types in the Introduction). Three of these were retained at AMS, I.7232 to I.7234 (M. McGrouther, pers. comm.), whereas the other two were returned to WAM. However, only one, P.13258-001, could be located at WAM. Therefore, the fifth syntype must be presumed to be lost. Furthermore, the type locality was given as "Carnarvon to the northward of Houtman's Abrolhos". McKay (1965) disputed this, believing the area of collection to be Mandurah. However, the first registration of this syntype, number 6814 in the Taxidermist's Book, gives the locality as "Between Fremantle and Geraldton". Mandurah is mentioned in a subsequent listing in the Catalogue of the Museum (registration number 157) (see History of the Collection above). McKay reregistered the latter as P.13258 in 1965, giving Mandurah as the collection locality (apparently he was unaware of the earlier registration in the Taxidermists Book). Therefore, as the syntype still has the original label attached to it with 6814 clearly visible, we prefer to recognise the region between Fremantle and Geraldton as its area of collection.

**Monacanthidae**

*Chaetodermis maccullochi* Waite, 1905: 81, Pl. xvii.

Holotype — P.13260-001, 230 mm TL, Houtman Abrolhos, WA.

Remarks. This name is a junior synonym of *C. penicilligerus* (Cuvier, 1817).

*Colurodontis paxmani* Hutchins, 1977: 22, Figure 7.

Holotype — P.15454-001, 120 mm SL, Shark Bay, WA.

Paratypes — P.14871-001, 78 mm SL, Shark Bay, WA; P.15455-001, 118 mm SL, Shark Bay, WA; P.23242-001 to P.23252-001, 11 specimens, 12-16 mm SL, off Onslow, WA; P.24124-001 to P.24125-001, 2 specimens, 11-12 mm SL, Dampier Archipelago, WA; P.24126-001 to P.24127-001, 2 specimens, 13-14 mm SL, Dampier Archipelago, WA; P.25568-001, 2 specimens, 68-79 mm SL, Shark Bay, WA; P.25569-001, 8 specimens, 14-17 mm SL, Exmouth Gulf, WA; P.25570-001, 74 mm SL (skel.), Shark Bay, WA; P.25571-001, 41 mm SL, Shark Bay, WA; P.25572-001, 31 mm SL, Onslow, WA; P.25573-001, 87 mm SL, Woodmans Point, WA.

*Eubalichthys caeruleoguttatus* Hutchins, 1977: 28, Figure 8.

Holotype — P.5204-001, 212 mm SL, Beagle Island, WA.

Paratypes — P.9156-001, 129 mm SL, P.9157-001, 134 mm SL, both from Shark Bay, WA; P.9159-001, 115 mm SL, Exmouth Gulf, WA; P.11828-001 to P.11829-001, 2 specimens, 117-142 mm SL, Shark Bay, WA; P.14845-001, 190 mm SL (skel.), Shark Bay, WA; P.14875-001, 115 mm SL, P.14887-001, 100 mm SL, both from Exmouth Gulf, WA; P.22100-001, 253 mm SL, and P.22310-001, off Cape Cuvier, WA; P.25555-001, 35 mm SL, Houtman Abrolhos, WA; P.25556-001, 53 mm SL, Shark Bay, WA; P.25557-001, 131 mm SL, off Carnarvon, WA; P.25558-001, 5 specimens, 76-98 mm SL, off Point Quobba, WA; P.25559-001, 44 mm SL, off Point Quobba, WA; P.25579-001, 245 mm SL, off Koks Island, WA.

Remarks. The type description includes a typographical error: P.25558-001 contains 5 specimens instead of 6.

*Eubalichthys cyanoura* Hutchins, 1987b: 51, Figure 1.

Holotype — P.25762-001, 232 mm SL, Recherche Archipelago, WA.

Paratypes — P.24841-001, 159 mm SL, Albany, WA; P.28393-004, 156 mm SL, Geographe Bay, WA; P.28865-002, 299 mm SL, Safety Bay, WA; P.25998-001, 104 mm SL, off Fremantle, WA; P.27137-001, 2 specimens, 138-238 mm SL, Yorke Peninsula, SA.

*Eubalichthys fuscusinus* Hutchins, 1977: 33, Figure 9.

Holotype — P.25580-001, 273 mm SL, near Koks Island, WA.

Paratypes — P.25579-002, 2 specimens, 231-253 mm SL, near Koks Island, WA.

Remarks. This name is a junior synonym of *E. caeruleoguttatus* (Hutchins, 1977).

*Meuschenia flavolineata* Hutchins, 1977: 40, Figure 11.

Holotype — P.25489-001, 233 mm SL, near Rottneest Island, WA.

Paratypes — P.9155-001, 144 mm SL, near Albany, WA; P.24514-001, 157 mm SL, Canal Rocks, WA; P.25150-008, 137 mm SL, Canal Rocks, WA; P.25173-001, 162 mm SL (skel.), P.25250-004, 176 mm SL, P.25251-003, 2 specimens, 178-190 mm SL, all from Rottneest Island, WA; P.25252-002, 201 mm SL, off Carnac Island, WA; P.25549-001, 81 mm SL, Woodmans Point, WA; P.25550-001, 48 mm SL, Augusta, WA; P.25551-001, 67 mm SL, Rottneest Island, WA; P.25553-001, 239 mm SL, Rottneest Island, WA.



*Meuschenia venusta* Hutchins, 1977: 45, Figure 12.

Holotype — P.14881-001, 110 mm SL, Shark Bay, WA.

*Pseudomonacanthus galii* Waite, 1905: 79, Pl. xvi.

Holotype — P.13259-001, 300 mm TL, Shark Bay, WA.

Remarks. Although the label with this specimen states that it is "possibly type", there seems little doubt that it is indeed the holotype. Its length is exactly 300 mm TL as given in the type description, and the specimen compares favourably with the type illustration. However, there are some discrepancies. The head and body proportions given in the description match neither the proportions of the labelled type nor those of the type illustration. It appears that the proportions presented are relative to SL and not TL as stated. Furthermore, the fin ray counts of this specimen match all those visible in the type illustration with the exception of the pectoral count. The specimen has 12 pectoral rays but only 10 rays are shown in the illustration (fin ray counts were not included in the description). However, we examined an additional 15 individuals of this species and all have 12 pectoral rays. Therefore, we believe that the low pectoral count in the type illustration was probably an error on the part of the artist. This species is now known as *Meuschenia galii* (see Hutchins, 1977).

*Pervagor marginalis* Hutchins, 1986: 23, Pl. IIA, Figure 10.

Paratype — P.28361-001, 50 mm SL, Nuku Hiva, Marquesas Islands.

*Pervagor randalli* Hutchins, 1986: 30, Pl. IID, E. Figures 4d, 6, 9.

Paratype — P.28357-001, 48 mm SL, Ambouli Reef, Gulf of Aden.

*Rudarius excelsus* Hutchins, 1977: 49, Figure 13.

Paratype — P.25603-001, 15 mm SL (c/s), near Lindeman Island, Qld.

#### Tetraodontidae

*Canthigaster leoparda* Lubbock and Allen, 1979: 88, Figures 1, 2.

Paratypes — P.25239-010, 56 mm SL, Ambon Island, Indonesia; P.26116-003, 51 mm SL, Christmas Island, Indian Ocean.

*Canthigaster ocellincta* Allen and Randall, 1977: 485, Figure 3b.

Paratype — P.25283-004, 28 mm SL, Suva Harbour, Fiji Islands.

*Canthigaster pygmae* Allen and Randall, 1977: 498, Figure 15.

Paratypes — P.25124-001, 36 mm SL, Eilat, Gulf of Aquaba; P.25125-001, 2 specimens, 17-31 mm SL, El Himeira, Gulf of Aquaba.

*Canthigaster smithae* Allen and Randall, 1977: 489, Figure 5C.

Paratype — P.25126-001, 50 mm SL, Flic en Flac, Mauritius.

Remarks. This paratype could not be located at WAM and must be considered to be lost.

*Canthigaster tyleri* Allen and Randall, 1977: 497, Figure 6C.

Paratype — P.25169-001, 58 mm SL, Ambon Island, Indonesia.

*Contusus brevicaudus* Hardy, 1981: 16, Figures 1A, 3.

Paratypes — P.25722-001, 185 mm SL, Mandurah, WA; P.21821-001, 147 mm SL, Wilsons Inlet, WA; P.22203-001, 182 mm SL, Hardy Inlet, WA; P.25064-008, 75 mm SL, Hardy Inlet, WA; P.25183-001, 143 mm SL, Stokes Inlet, WA.

*Omegophora cyanopunctata* Hardy and Hutchins, 1981: 195, Figures 2, 3B.

Holotype — P.26942-001, 123 mm SL, Canal Rocks, WA.

Paratypes — P.5648-001, 121 mm SL, off Middleton Beach, WA; P.24540-001, 87 mm SL, Carnac Island, WA; P.25763-001, 85 mm SL, P.25769-001, 112 mm SL, both from Recherche Archipelago, WA; P.26003-004, 2 specimens, 79-86 mm SL, Lucky Bay, WA; P.26564-001, 133 mm SL, Quarry Bay Beach, WA; P.26928-001, 120 mm SL, Busselton, WA.

*Torquigener pallimaculatus* Hardy, 1983a: 20, Figure 8.

Paratypes — P.13490-001 to P.13491-001, 2 specimens, 98-136 mm SL, Exmouth Gulf, WA; P.22070-001, 123 mm SL, Rottneest Island, WA; P.23439-001, 122 mm SL (skel.), P.23440-001, 129 mm SL, both from Learmonth, WA; P.23799-001, 132 mm SL, Exmouth Gulf, WA; P.25095-026, 2 specimens, 99-118 mm SL, Exmouth Gulf, WA; P.26293-002, 117 mm SL, Indian Ocean, off north-western Australia; P.26929-001, 2 specimens, 103-105 mm SL, off Rottneest Island, WA.

*Torquigener paxtoni* Hardy, 1983a: 17, Figure 7.

Holotype — P.23298-001, 107 mm SL, Shark Bay, WA.

Paratypes — P.13488-001 to P.13489-001, 2 specimens, 91-104 mm SL, Shark Bay, WA; P.23296-001 to P.23297-001, 2 specimens, 60-82 mm SL, P.23299-001 to P.23302-001, 4 specimens, 75-110 mm SL, P.26771-001, 110 mm SL, (skel.), all from Shark Bay, WA; P.23607-001 to P.23610-001, 4 specimens, 72-84 mm SL, Carnarvon, WA; P.26924-001, 9 specimens, 66-81 mm SL, P.26924-002, 88 mm SL, all from Houtman Abrolhos, WA; P.26925-001, 95 mm SL, Shark Bay, WA; P.26926-001, 90 mm SL, Rottneest Island, WA; P.26927-001, 94 mm SL, Shark Bay, WA.

*Torquigener piosae* Whitley, 1955: 56, Figure 8.

Paratypes — P.3681-001 to P.3686-001, 6 specimens, 41-61 mm SL, Leighton Beach, WA.

Remarks. This species is now known as *Polyspina piosae* (see Hardy, 1983).

#### Acknowledgements

The groundwork for this catalogue was commenced by N. Sarti and updated by N. Haig, both of whom worked at the time in the Museum's Department of Fishes. Without their efforts, the preparation of this catalogue would have been a far more onerous task. In addition, the following provided additional information on material in their care: G.R. Allen (WAM); D.F. Hoese, J.R. Paxton and M. McGroutner (AMS); R.J. McKay (QM); and J. Thompson (University of Queensland). Help with tracking down information on some of the early WAM catalogues was given by L.A. Smith (WAM), and the Librarian at WAM, M. Triffit, assisted with a search for old correspondence in the WAM archives. To all the above, we are very grateful for your assistance.

#### References

- Alexander, W.B. (1917). Description of a new species of fish of the genus *Evoxytmetopon*, Poey. *J. R. Soc. West. Aust.* 2: 104-105.
- Allen, G.R. (1972). *Anemonefishes*. T.F.H. Publications, Neptune City.
- Allen, G.R. (1976a). Descriptions of three new fishes from Western Australia. *J. R. Soc. West. Aust.* 59(1): 24-30.
- Allen, G.R. (1976b). Two new species of damselfishes (Pomacentridae) from Western Australia. *Rec. West. Aust. Mus.* 4(2): 133-144.
- Allen, G.R. (1977a). A new species of scorpaenid fish (Scorpaenidae) from Western Australia. *Proc. Linn. Soc. N.S.W.* 101(3): 145-149.
- Allen, G.R. (1977b). A revision of the plesiopid fish genus *Trachinops* with the description of a new species from Western Australia. *Rec. West. Aust. Mus.* 5(1): 59-72.

- Allen, G.R. (1978). The rainbowfishes of northwestern Australia (Family Melanotaeniidae). *Trop. Fish Hobbyist* 26(June): 91-102.
- Allen, G.R. (1979). *Chilatherina axelrodi* a new species of rainbowfish (Melanotaeniidae) from Papua New Guinea. *Trop. Fish Hobbyist* 28(January): 48-55.
- Allen, G.R. (1980). Two new species of rainbowfishes (Melanotaeniidae) from Papua New Guinea. *Revue fr. Aquariol.* 7(2): 43-50.
- Allen, G.R. (1981a). A new species of *Glossolepis* (Pisces: Melanotaeniidae) from freshwaters of Papua New Guinea. *Rec. West. Aust. Mus.* 9(3): 301-306.
- Allen, G.R. (1981b). Central highlands rainbows from Papua New Guinea, with descriptions of two new species. *Trop. Fish Hobbyist* 29(5): 20-33, 68-79.
- Allen, G.R. (1981c). The "Maccullochi Species Group" of rainbowfishes (Melanotaeniidae) with the description of *Melanotaenia papuae*, new species. *Revue fr. Aquariol.* 8(2): 47-56.
- Allen, G.R. (1981d). *Popondetta connieae*, a new species of rainbowfish (Melanotaeniidae) from Papua New Guinea. *Revue fr. Aquariol.* 8(2): 43-46.
- Allen, G.R. (1982a). *Melanotaenia corona* a new species of rainbowfish from northern New Guinea (Pisces, Atheriniformes, Melanotaeniidae). *Bull. Zool. Mus. Amsterdam* 8(21): 173-176.
- Allen, G.R. (1982b). A new species of freshwater rainbowfish (Melanotaeniidae) from Misool Island, Indonesia. *Rec. West. Aust. Mus.* 10(2): 105-109.
- Allen, G.R. (1982c). *Parambassis altipinnis*, a new species of freshwater glassfish from western New Guinea (Pisces, Ambassidae). *Bull. Zool. Mus. Amsterdam* 8(20): 165-169.
- Allen, G.R. (1983a). *Melanotaenia maylandi*, a new species of rainbowfish (Melanotaeniidae) from New Guinea. *Revue fr. Aquariol.* 10(3): 83-86.
- Allen, G.R. (1983b). *Kiunga ballochi* a new genus and species of rainbowfish (Melanotaeniidae) from Papua New Guinea. *Trop. Fish. Hobbyist* 32(2): 72-77.
- Allen, G.R. (1983c). A new genus and species of wrasse (Pisces: Labridae) from Rowley Shoals, Western Australia. *Revue fr. Aquariol.* 10(2): 43-46.
- Allen, G.R. (1984a). A new genus and species of anthiid fish from Papua New Guinea. *Revue fr. Aquariol.* 11(2): 47-50.
- Allen, G.R. (1984b). A new species of freshwater grunter (Pisces: Teraponidae) from New Guinea. *Rec. West. Aust. Mus.* 11(4): 393-397.
- Allen, G.R. (1985a). Descriptions of two new species of freshwater catfishes (Plotosidae) from Papua New Guinea. *Rec. West. Aust. Mus.* 12(3): 247-256.
- Allen, G.R. (1985b). Three new rainbowfishes (Melanotaeniidae) from Irian Jaya and Papua New Guinea. *Revue fr. Aquariol.* 12(2): 53-62.
- Allen, G.R. (1985c). A new species of cardinalfish (Apogonidae) from northern Australia and the Aru Islands. *The Beagle. Occ. Pap. N. Terr. Mus.* 2(1): 11-15.
- Allen, G.R. (1987a). *Melanotaenia iris*, a new freshwater rainbowfish (Melanotaeniidae) from Papua New Guinea with notes on the fish fauna in head waters. *Jap. J. Ichthyol.* 34(1): 15-20.
- Allen, G.R. (1987b). New Australian fishes. Part 2. Four new species of Apogonidae. *Mem. Mus. Vic.* 48(1): 3-8.
- Allen, G.R. (1987c). New Australian fishes. Part 3. A new species of *Pomacentrus* (Pomacentridae). *Mem. Mus. Vic.* 48(1): 9-11.
- Allen, G.R. (1987d). New Australian fishes. Part 4. A new species of *Steeneichthys* (Plesiopidae). *Mem. Mus. Vic.* 48(1): 13-14.
- Allen, G.R. (1987e). Descriptions of three new pseudochromid fishes of the genus *Pseudoplesiops* from Australia and surrounding regions. *Rec. West. Aust. Mus.* 13(2): 249-261.
- Allen, G.R. (1987f). *Chrysiptera sinclairi*, a new species of damselfish from the tropical western Pacific Ocean. *Revue fr. Aquariol.* 13(4): 107-110.
- Allen, G.R. (1987g). A new species of pomacentrid fish with notes on other damselfishes of the Kermadec Islands. *Rec. West. Aust. Mus.* 13(2): 263-273.
- Allen, G.R. (1989). Les Poissons arc-en-ciel (Melanotaeniidae) de la Péninsule de Vogelkop, Irian Jaya, avec description de trois nouvelles espèces. *Revue fr. Aquariol.* 16(4): 101-112.

- Allen, G.R. (1991). *Damselfishes of the World*. Mergus Publishers. Melle.
- Allen, G.R. and Ayling, A.M. (1987). New Australian fishes. Part 5. A new species of *Acanthurus* (Acanthuridae). *Mem. Mus. Vic.* 48(1): 15-16.
- Allen, G.R. and Boeseman, M. (1982). A collection of freshwater fishes from western New Guinea with descriptions of two new species (Gobiidae and Eleotridae). *Rec. West. Aust. Mus.* 10(2): 67-103.
- Allen, G.R. and Burhanuddin (1976). *Anthias hutomoi*, a new species of serranid fish from Indonesia (Perciformes, Serranidae). *Mar. Res. Indonesia* 16(1): 45-50.
- Allen, G.R. and Coates, D. (1990). A new species of freshwater eleotrid fish from northern Papua New Guinea. *Rec. West. Aust. Mus. Suppl.* no. 34: 131-137.
- Allen, G.R. and Cross, N.J. (1980). Descriptions of five new rainbowfishes (Melanotaeniidae) from New Guinea. *Rec. West. Aust. Mus.* 8(3): 377-396.
- Allen, G.R. and Cross, N.J. (1982). *Rainbowfishes of Australia and New Guinea*. T.F.H. Publications, Neptune City.
- Allen, G.R. and Cross, N.J. (1983). A new species and two new records of squirrelfishes (Holocentridae) from the eastern Indian Ocean and Australia. *Revue fr. Aquariol.* 10(1): 5-8.
- Allen, G.R. and Emery, A.R. (1985). A review of the pomacentrid fishes of the genus *Stegastes* from the Indo-Pacific, with descriptions of two new species. *Indo-Pacific Fishes* 3: 1-31.
- Allen, G.R. and Heemstra, P.C. (1976). *Cheilodactylus rubrolabiatus*, a new species of morwong (Pisces: Cheilodactylidae) from Western Australia, with a key to the cheilodactylid fishes of Australia. *Rec. West. Aust. Mus.* 4(4): 311-325.
- Allen, G.R. and Hoese, D.F. (1975). A review of the pomacentrid fish genus *Parma*, with descriptions of two new species. *Rec. West. Aust. Mus.* 3(4): 261-293.
- Allen, G.R. and Hoese, D.F. (1986). The eleotrid fishes of Lake Kutubu, Papua New Guinea with descriptions of four new species. *Rec. West. Aust. Mus.* 13(1): 79-100.
- Allen, G.R. and Hoese, D.F. (1991). A review of the genus *Mogurnda* (Pisces: Eleotridae) from New Guinea with descriptions of three new species. *Ichthyol. Explor. Freshwaters* 2(1): 31-46.
- Allen, G.R. and Ivanstovff, W. (1982). *Pseudomugil mellis*, le honey blue-eye une nouvelle espèce de Poisson Arc-en-ciel (Melanotaeniidae) d'Australie orientale. *Revue fr. Aquariol.* 9(3): 83-86.
- Allen, G.R. and Ivanstovff, W. (1986). Deux nouvelles espèces de blue-eyes (Pseudomugil: Melanotaeniidae) de Nouvelle-Guinée. *Revue fr. Aquariol.* 12(3): 85-88.
- Allen, G.R. and Kailola, P.J. (1979). *Glossolepis wanamensis*, a new species of freshwater rainbowfish (Melanotaeniidae) from New Guinea. *Revue fr. Aquariol.* 6(2): 39-44.
- Allen, G.R. and Kuitert, R.H. (1976). A review of the plesiopid fish genus *Assessor*, with descriptions of two new species. *Rec. West. Aust. Mus.* 4(3): 201-215.
- Allen, G.R. and Larson, H.K. (1979). *Parma bicolor*, a new species of damselfish from southwestern Australia. *Revue fr. Aquariol.* 6(1): 11-14.
- Allen, G.R. and Lubbock, R. (1976). *Glyphidodontops springeri*, a new species of damselfish (Pomacentridae) from the Philippine and Mollucca Islands. *Proc. Biol. Soc. Wash.* 88(31): 345-350.
- Allen, G.R. and Merrick, J.R. (1984). A new species of freshwater grunter (Pisces: Teraponidae) from northern Australia. *The Beagle. Occ. Pap. N. Terr. Mus.* 1(8): 75-80.
- Allen, G.R. and Moore, R. (1981). *Pseudomugil paludicola*, a new species of freshwater blue-eye (Melanotaeniidae) from Papua New Guinea. *Revue fr. Aquariol.* 7(4): 105-108.
- Allen, G.R. and Moyer, J.T. (1980). *Ellerkeldia wilsoni*, a new species of serranid fish from southwestern Australia. *Jap. J. Ichthyol.* 26(4): 329-333.
- Allen, G.R. and Randall, J.E. (1977). Review of the sharpnose pufferfishes (subfamily Canthigasterinae) of the Indo-Pacific. *Rec. Aust. Mus.* 30(17): 475-517.
- Allen, G.R. and Randall, J.E. (1980). A review of the damselfishes (Teleostei: Pomacentridae) of the Red Sea. *Israel J. Zool.* 29: 1-98.
- Allen, G.R. and Randall, J.E. (1985a). A new genus and species of plesiopid fish from Western Australia and the central-south Pacific Ocean. *Rec. West. Aust. Mus.* 12(2): 185-191.
- Allen, G.R. and Randall, J.E. (1985b). A new species of damselfish (Pomacentridae) from eastern Australia and the Norfolk Island Ridge. *Rec. West. Aust. Mus.* 12(2): 241-245.

- Allen, G.R. and Randall, J.E. (1990). *Hypoplectrodes cardinalis*, a new name for the serranid fish *H. ruber* (Allen) from southwestern Australia, with discussion of *H. semicinctus* from Juan Fernandez Islands. *Revue fr. Aquariol.* 17(2): 45-46.
- Allen, G.R. and Sarti, N. (1983). *Pseudomugil cyanodorsalis*, une nouvelle espèce de blue-eye (Melanotaeniidae) d'Australie nord-occidentale. *Revue fr. Aquariol.* 10(2): 47-50.
- Allen, G.R. and Stark, W.A. (1975). *Cephalopholis xanthopterus*, a new species of serranid fish from Indonesia, Melanesia and the Great Barrier Reef. *Rec. West. Aust. Mus.* 3(3): 245-249.
- Allen, G.R. and Stark, W.A. (1982). The anthiid fishes of the Great Barrier Reef, Australia, with the description of a new species. *Revue fr. Aquariol.* 9(2): 47-56.
- Allen, G.R. and Talbot, F.H. (1985). Review of the snappers of the genus *Lutjanus* (Pisces: Lutjanidae) from the Indo-Pacific, with the description of a new species. *Indo-Pacific Fishes* 11: 1-87.
- Allen, G.R. and Woods, L.P. (1980). A review of the damselfish genus *Stegastes* from the eastern Pacific with the description of a new species. *Rec. West. Aust. Mus.* 8(2): 171-198.
- Anderson, W.D., Jr and Heemstra, P.C. (1989). *Ellerkeldia*, a junior synonym of *Hypoplectrodes*, with redescrptions of the type species of the genera (Pisces: Serranidae: Anthiinae). *Proc. Biol. Soc. Wash.* 102(4): 1001-1017.
- Ayling, A.M. and Paxton, J.R. (1983). *Odax cyanoallix*, a new species of odacid fish from northern New Zealand. *Coepia* 1983(1): 95-101.
- Ayling, A.M. and Russell, B.C. (1977). The labrid fish genus *Pseudojuloides*, with description of a new species. *Aust. Zool.* 19(2): 169-178.
- Bath, H. and Hutchins, B. (1986). Die Blenniini des australischen Raums und Neuseelands mit Beschreibung einer neuen Art und einer neuen Unterart. *Senckenbergiana biol.* 66(4/6): 167-213.
- Böhlke, J.E. and Randall, J.E. (1981). Four new garden eels (Congridae, Heterocongrinae) from the Pacific and Indian Oceans. *Bull. Mar. Sci.* 31(2): 366-382.
- Bruner, J.C. and Arnam, S. (1979). *Chromis woodsi*, a new species of damselfish (Pomacentridae) from the western Indian Ocean with a redescription of *Chromis axillaris* (Bennett), 1831. *Fieldiana (zool).* 73(3): 49-63.
- Burgess, W.E. (1981). *Pomacentrus alleni* and *Amphiprion thiellei*, two new species of pomacentrids (Pisces: Pomacentridae) from the Indo-Pacific. *Trop. Fish Hobbyist* 30 (November): 68-73.
- Carpenter, K.E. (1987). Revision of the Indo-Pacific fish family Caesionidae (Lutjanoidea), with descriptions of five new species. *Indo-Pacific Fishes* 15: 1-56.
- Choat, J.H. and Randall, J.E. (1986). A review of the parrotfishes (Family Scaridae) of the Great Barrier Reef of Australia, with description of a new species. *Rec. Aust. Mus.* 38(4): 175-228.
- Cohen, D.M. and Hutchins, J.B. (1982). Description of a new *Dinematichthys* (Ophidiiformes: Bythitidae) from Rottneest Island, Western Australia. *Rec. West. Aust. Mus.* 9(4): 341-347.
- Cohen, D.M. and Robins, C.R. (1986). A review of the ophidiid fish genus *Sirembo* with a new species from Australia. *Mem. Qd Mus.* 22(2): 253-263.
- Collette, B.B. (1985). *Zenarchopterus ornithocephala*, a new species of freshwater halfbeak (Pisces: Hemiramphidae) from the Vogelkop Peninsula of New Guinea. *Proc. Biol. Soc. Wash.* 98(1): 107-111.
- Collette, B.B. and Nauen, C.E. (1983). FAO species catalogue. Vol. 2. Scombrids of the world. An annotated and illustrated catalogue of tunas, mackerels, bonitos, and related species known to date. *FAO Fish. Synop.* 125, Vol. 2: 1-137.
- Collette, B.B. and Ruso, J.L. (1981). A revision of the scaly toadfishes, genus *Batrachoides*, with descriptions of two new species from the eastern Pacific. *Bull. Mar. Sci.* 31(2): 197-233.
- Cressey, R. (1981). Revision of the Indo-west Pacific lizardfishes of the genus *Synodus* (Pisces: Synodontidae). *Smithson. Contrib. Zool.* 342: 1-53.
- Crowley, L.E.L.M. and Ivanstoffs, W. (1988). A new species of Australian *Craterocephalus* (Pisces: Atherinidae) and redescription of four other species. *Rec. West. Aust. Mus.* 14(2): 151-169.
- Crowley, L.E.L.M. and Ivanstoffs, W. (1990a). A review of species previously identified as *Craterocephalus eyresii* (Pisces: Atherinidae). *Proc. Linn. Soc. N.S.W.* 112(2): 87-103.

- Crowley, L.E.L.M. and Ivanstoff, W. (1990b). A second hardyhead, *Craterocephalus gloveri* (Pisces: Atherinidae), from Dalhousie Springs, central Australia. *Ichthyol. Explor. Freshwaters* 1(2): 113-122.
- Crowley, L.E.L.M., Ivanstoff, W. and Allen, G.R. (1991). Freshwater fishes of the genus *Craterocephalus* (Artherinidae) from the southern drainages of Papuae New Guinea and Irian Jaya with reference to *C. s. stercusmuscarum* from Australia. *Rec. West. Aust. Mus.* 15(1): 33-52.
- Dawson, C.E. (1978a). Description of a new Western Australian pipefish (*Choeroichthys latispinosus*), with notes on *Syngnathus tuckeri* Scott and *Nannocampichthys* Hora and Mukerji. *Rec. West. Aust. Mus.* 6(4): 413-421.
- Dawson, C.E. (1978b). *Syngnathus parvicarinatus*, a new Australian pipefish, with notes on *S. sauvagei* (Whitley) and *Leptonotus caretta* (Klunzinger). *Coepia* 1978(2): 288-293.
- Dawson, C.E. and Allen, G.R. (1978). Synopsis of the 'finless' pipefish genera (*Penetopteryx*, *Apterygocampus* and *Enchelyocampus*, gen. nov.). *Rec. West. Aust. Mus.* 6(4): 407-410.
- Dawson, C.E. and Allen, G.R. (1981). *Micrognathus spinirostris*, a new Indo-Pacific pipefish (Syngnathidae). *J. R. Soc. West. Aust.* 64(2): 65-68.
- Dor, M. and Allen, G.R. (1977). *Neopomacentrus miryae*, a new species of pomacentrid fish from the Red Sea. *Proc. Biol. Soc. Wash.* 90(1): 183-188.
- Eschmeyer, W.N. and Allen, G.R. (1978). *Neoaploactis tridorsalis*, a new genus and species of fish from the Great Barrier Reef, Australia (Scorpaeniformes: Aploactinidae). *Rec. West. Aust. Mus.* 6(4): 443-448.
- Eschmeyer, W.N. and Poss, S.G. (1976). Review of the scorpionfish genus *Maxillicosta* (Pisces: Scorpaenidae), with a description of three new species from the Australian-New Zealand region. *Bull. Mar. Sci.* 26(4): 433-449.
- Fricke, R. (1983). Revision of the Indo-Pacific fish genera and species of the dragonet family Callionymidae (Teleostei). *Theses Zoologicae* 3: 1-774.
- Garrick, J.A.F. (1982). Sharks of the genus *Carcharhinus*. *NOAA Tech. Rep. NMFS Circ.*, (445): 1-194.
- George, A. and Springer, V.G. (1980). Revision of the clinid fish tribe Ophiclinini, including five new species, and definition of the family Clinidae. *Smithson. Contr. Zool.* 307: 1-31.
- Gill, H.S. and Miller, P.J. (1990). A new genus and species of goby from the Swan-Avon estuary, Western Australia, with a redescription of the genus *Favonigobius* Whitley, 1930. *Rec. West. Aust. Mus.* 14(4): 503-525.
- Gloerfelt-Tarp, T. and Kailola, P.J. (1984). *Trawled fishes of southern Indonesia and northwestern Australia*. Australian Development Assistance Bureau, Canberra.
- Gomon, M.F. (1987). New Australian fishes. Part 6. New species of *Lepidotrigla* (Triglidae), *Choerodon* (Labridae) and *Zebrias* (Soleidae). *Mem. Mus. Vic.* 48(1): 17-23
- Gomon, M.F. and Allen, G.R. (1987). New Australian fishes. Part 7. A new species of *Choerodon* (Labridae). *Mem. Mus. Vic.* 48(1): 25-26.
- Gomon, M.F. and Paxton, J.R. (1985). A revision of the Odacidae, a temperate Australian-New Zealand labroid fish family. *Indo-Pacific Fishes* 8: 1-57.
- Hardy, G.S. (1981). A redescription of the pufferfish *Contusus richei* (Tetraodontiformes: Tetraodontidae), and description of a second species of *Contusus*. *N. Z. J. Ichthyol.* 8: 11-23.
- Hardy, G.S. (1983a). Revision of the Australian species of *Torquigener* Whitley (Tetraodontiformes: Tetraodontidae), and two new generic names for Australian puffer fishes. *J. R. Soc. N. Z.* 13(1/2): 1-48.
- Hardy, G.S. (1983b). A new genus and species of boarfish (Perciformes: Pentacerotidae) from Western Australia. *Rec. West. Aust. Mus.* 10(4): 373-380.
- Hardy, G.S. (1984). Revision of the Acanthoclinidae (Pisces: Perciformes), with descriptions of a new genus and five new species. *N. Z. J. Zool.* 11: 357-393.
- Hardy, G.S. and Hutchins, J.B. (1981). On the validity of the pufferfish genus *Omegophora* Whitley (Tetraodontiformes: Tetraodontidae) with the description of a new species. *Rec. West. Aust. Mus.* 9(2): 187-201.
- Heemstra, P.C. and Randall, J.E. (1979). A revision of the anthiine fish genus *Sacura* (Perciformes: Serranidae) with descriptions of two new species. *Spec. Publ. Smith Inst. Ichthyol.* 20: 1-12.

- Hensley, D.A. and Allen, G.R. (1977). A new species of *Abudefduf* (Pisces: Pomacentridae) from the Indo-Australian Archipelago. *Rec. West. Aust. Mus.* 6(1): 107-118.
- Hensley, D.A. and Randall, J.E. (1983). A new species of *Abudefduf* (Pisces: Pomacentridae) from the east coast of South Africa. *Occ. Pap. Bernice P. Bishop Mus.* 25(6): 1-10.
- Hoese, D.F. and Allen, G.R. (1977). *Signigobius biocellatus*, a new genus and species of sand-dwelling coral reef gobiid fish from the western tropical Pacific. *Jap. J. Ichthyol.* 23(4): 199-207.
- Hoese, D.F. and Allen, G.R. (1983). A review of the gudgeon genus *Hypseleotris* (Pisces: Eleotridae) of Western Australia, with descriptions of three new species. *Rec. West. Aust. Mus.* 10(3): 243-261.
- Hoese, D.F. and Allen, G.R. (1987). New Australian fishes. Part 10. A new genus and two new species of freshwater eleotridid fishes (Gobioidei) from the Kimberley region of Western Australia. *Mem. Mus. Vic.* 48(1): 35-42.
- Hoese, D.F. and Allen, G.R. (1990). Descriptions of two new freshwater *Glossogobius* (Pisces: Gobiidae) from northern Papua New Guinea. *Rec. West. Aust. Mus. Suppl. no. 34*: 117-129.
- Hoese, D.F. and Kuitert, R.H. (1984). A revision of the Australian plesiopid fish genus *Paraplesiops*, with notes on other Australian genera. *Rec. Aust. Mus.* 36: 7-18.
- Hoese, D.F. and Larson, H.K. (1987). New Australian fishes. Part 11. A new genus and species of eleotridid (Gobioidei) from southern Australia with a discussion of relationships. *Mem. Mus. Vic.* 48(1): 43-50.
- Hoese, D.F. and Reader, S. (1985). A new gobiid fish, *Fusigobius duospilus*, from the tropical Indo-Pacific. *Spec. Publ. Smith Inst. Ichthyol.* 36: 1-9.
- Hoese, D.F. and Steene, R. (1978). *Amblyeleotris randalli*, a new species of gobiid fish living in association with alpheid shrimps. *Rec. West. Aust. Mus.* 6(4): 379-389.
- Holleman, W. (1987). Description of a new genus and species of tripterygiid fish (Perciformes: Blennioidei) from the Indo-Pacific, and the reallocation of *Vauclusella acanthops* Whitley, 1965. *Cybium* 11(2): 173-181.
- Hutchins, J.B. (1974). *Halophryne ocellatus*, a new species of frogfish (Batrachoididae) from Western Australia. *Rec. West. Aust. Mus.* 3(2): 115-120.
- Hutchins, J.B. (1976). A revision of the Australian frogfishes (Batrachoididae). *Rec. West. Aust. Mus.* 4(1): 3-43.
- Hutchins, J.B. (1977). Descriptions of three new genera and eight new species of monacanthid fishes from Australia. *Rec. West. Aust. Mus.* 5(1): 3-58.
- Hutchins, J.B. (1981). Description of a new species of serranid fish from Western Australia, with a key to the Australian species of *Acanthistius*. *Rec. West. Aust. Mus.* 8(4): 491-499.
- Hutchins, J.B. (1983). Redescription of the clingfish *Cochleoiceps spatula* (Gobiesocidae) from Western Australia and South Australia, with the description of a new species from Victoria and Tasmania. *Rec. West. Aust. Mus.* 11(1): 33-47.
- Hutchins, J.B. (1984). Description of a new gobiesocid fish from south-western Australia, with a key to the species of *Aspasmogaster*. *Rec. West. Aust. Mus.* 11(2): 129-140.
- Hutchins, J.B. (1986). Review of the monacanthid fish genus *Pervagor*, with descriptions of two new species. *Indo-Pacific Fishes* 12: 1-35.
- Hutchins, J.B. (1987a). Description of a new plesiopid fish from south-western Australia, with a discussion of the zoogeography of *Paraplesiops*. *Rec. West. Aust. Mus.* 13(2): 231-240.
- Hutchins, J.B. (1987b). New Australian fishes. Part 12. A new species of *Eubalichthys* (Monacanthidae). *Mem. Mus. Vic.* 48(1): 51-52.
- Hutchins, J.B. (1990). Description of a new species of mullid fish from south-western Australia, with comments on *Upeneichthys lineatus*. *Rec. West. Aust. Mus.* 14(4): 483-493.
- Ivanstovff, W., Crowley, L.E.L.M. and Allen, G.R. (1987a). Description of a new species of freshwater hardyhead *Craterocephalus kailolae* (Pisces: Atherinidae) from Safia, northeastern Papua New Guinea. *Proc. Linn. Soc. N.S.W.* 109(4): 331-337.
- Ivanstovff, W., Crowley, L.E.L.M. and Allen, G.R. (1987b). Descriptions of three new species and one subspecies of freshwater hardyhead (Pisces: Atherinidae: *Craterocephalus*) from Australia. *Rec. West. Aust. Mus.* 13(2): 171-188.

- Jewett, S.L. and Lachner, E.A. (1983). Seven new species of the Indo-Pacific genus *Eviota* (Pisces: Gobiidae). *Proc. Biol. Soc. Wash.* **96**(4): 780-806.
- Kailola, P.J. (1990). A review of the freshwater fork-tailed catfishes (Pisces: Ariidae) of northern New Guinea, with descriptions of two new species. *Rec. West. Aust. Mus. Suppl. No. 34*: 1-30.
- Kailola, P.J. and Pierce, B.E. (1988). A new freshwater catfish (Pisces: Ariidae) from northern Australia. *Rec. West. Aust. Mus.* **14**(1): 73-89.
- Karnella, S.J. and Lachner, E.A. (1981). Three new species of the *Eviota epiphanes* group having vertical trunk bars (Pisces: Gobiidae). *Proc. Biol. Soc. Wash.* **94**(1): 264-275.
- Kishimoto, H. (1989). A new species and a new subspecies of the stargazer genus *Gnathagnus* from northwestern Australia. *Jap. J. Ichthyol.* **36**(3): 303-314.
- Knapp, L.W. (1987). New Australian fishes. Part 13. Two new species of Platycephalidae. *Mem. Mus. Vic.* **48**(1): 53-55.
- Knapp, L.W. (1991). *Platycephalus chauliodous*, a new flathead fish from the eastern Indian Ocean (Teleostei: Platycephalidae). *Proc. Biol. Soc. Wash.* **104**(1): 23-29.
- Kuiter, R.H. (1985). A new genus and three new species of tripterygiid fishes of Australia's south coast. *Revue fr. Aquariol.* **12**(3): 89-96.
- Kuiter, R.H. (1986). A new species of butterflyfish, *Chelmonops curiosus*, from Australia's South coast. *Revue fr. Aquariol.* **13**(3): 73-78.
- Kuiter, R.H. and Allen, G.R. (1986). A synopsis of the Australian pygmy perches (Percichthyidae), with the description of a new species. *Revue fr. Aquariol.* **12**(4): 109-116.
- Lachner, E.A. and Karnella, S.J. (1980). Fishes of the Indo-Pacific genus *Eviota* with descriptions of eight new species (Teleostei: Gobiidae). *Smithsonian Contr. Zool.* **315**: 1-127.
- Larson, H.K. (1985). A revision of the gobiid genus *Bryaninops* (Pisces), with a description of six new species. *The Beagle. Occ. Pap. N. Terr. Mus.* **2**(1): 57-93.
- Larson, H.K. (1987). A new species of *Bryaninops* (Pisces: Gobiidae) with notes on new records of three species of the genus. *The Beagle. Occ. Pap. N. Terr. Mus.* **4**(1): 139-145.
- Larson, H.K. (1990). A revision of the commensal gobiid fish genera *Pleurosicya* and *Luposicya* (Gobiidae), with descriptions of eight new species of *Pleurosicya* and discussion of related genera. *The Beagle. Rec. N. Terr. Mus.* **7**(1): 1-53.
- Last, P.R. and Gomon, M.F. (1987). New Australian fishes. Part 15. New species of *Trygonoptera* and *Urolophus* (Urolophidae). *Mem. Mus. Vic.* **48**(1): 63-72.
- Leviton, A.E., Gibbs, R.H., Heal, E., and Dawson, C.E. (1985). Standards in herpetology and ichthyology: Part 1. Standard symbolic codes for institutional resource collections in herpetology and ichthyology. *Copeia* **1985**(3): 802-832.
- Lubbock, R. and Allen, G.R. (1978). A distinctive new *Anthias* (Teleostei: Serranidae) from the Western Pacific. *Rec. West. Aust. Mus.* **6**(2): 259-268.
- Lubbock, R. and Allen, G.R. (1979). *Canthigaster leoparda* a new sharpnose pufferfish (Teleostei: Tetraodontidae) from the central Indo-Pacific. *Revue fr. Aquariol.* **6**(3): 87-90.
- Lubbock, R. and Randall, J.E. in Fourmanoir, P. and Laboute, P. (1976). *Poissons de Nouvelle Calédonie et des Nouvelles Hébrides*. Les éditions du Pacifique, Papeete.
- McCulloch, A.R. (1911). Report on the fishes obtained by the FIS "Endeavour" on the coasts of New South Wales, Victoria, South Australia, and Tasmania. Part 1. *Biol. Res. Endeavour* **1**(1): 1-87.
- McCulloch, A.R. (1912). Notes on some Western Australian fishes. *Rec. West. Aust. Mus.* **1**(2): 78-97.
- McCulloch, A.R. (1914a). Report on some fishes obtained by the FIS "Endeavour" on the coasts of Queensland, New South Wales, Victoria, Tasmania, South and south-western Australia. Part 2. *Biol. Res. Endeavour* **2**(3): 77-165.
- McCulloch, A.R. (1914b). Notes on some Western Australian fishes. *Rec. West. Aust. Mus.* **1**(3): 211-227.
- McCulloch, A.R. (1915). Report on some fishes obtained by the FIS "Endeavour" on the coasts of Queensland, New South Wales, Victoria, Tasmania, South and south-western Australia. Part 3. *Biol. Res. Endeavour* **3**(4): 97-170.



- McDowall, R.M. (1978). A new genus and species of galaxiid fish from Australia (Salmoniformes : Galaxiidae). *J. R. Soc. N.Z.* 8(1): 115-124.
- McEachran, J.D. and Fechhelm, J.D. (1982). A new species of skate from Western Australia with comments on the status of *Pavoraja* Whitley, 1939 (Chondrichthyes: Rajiformes). *Proc. Biol. Soc. Wash.* 95(1): 1-12.
- McKay, R.J. (1964). Description of a new stonefish of the family Synanceidae from Western Australia. *J. R. Soc. West. Aust.* 47(1): 8-12.
- McKay, R.J. (1965). Type specimens in the Western Australian Museum (Part 5) — Pisces, p. 35-37. In: *Annual Report of the Western Australian Museum 1963-64*, Western Australian Museum, Perth.
- McKay, R.J. (1966a). Type specimens in the Western Australian Museum (Part 6) — Pisces, p. 46-47. In: *Annual report of the Western Australian Museum 1964-65*, Western Australian Museum, Perth.
- McKay, R.J. (1966b). Studies on Western Australian sharks and rays of the families Scyliorhinidae, Urolophidae and Torpedinidae. *J. R. Soc. West. Aust.* 49(3): 65-82.
- McKay, R.J. (1968). The genus *Tandya* in Western Australia, with a description of a new opisthognathid fish, *Tandya reticulata* sp. nov. *J. R. Soc. West. Aust.* 52(1): 1-2.
- McKay, R.J. (1970). Additions to the fish fauna of Western Australia. 5. *West. Aust. Fish. Bull.* 9(5): 3-24.
- McKay, R.J. (1971). Two new genera and five new species of percophidid fishes (Pisces: Percophididae) from Western Australia. *J. R. Soc. West. Aust.* 54(2): 40-46.
- McKay, R.J. (1976). The fishes of the family Sillaginidae from India with the description of a new species. *J. Mar. Biol. Ass. India* 18(2): 375-385.
- McKay, R.J. (1985). A revision of the fishes of the family Sillaginidae. *Mem. Qd Mus.* 22(1): 1-73.
- Mees, G.F. (1960). The Uranoscopidae of Western Australia. *J. R. Soc. West. Aust.* 43(2): 46-58.
- Mees, G.F. (1961). Description of a new fish of the family Galaxiidae from Western Australia. *J. R. Soc. West. Aust.* 44(2): 33-38.
- Mees, G.F. (1962a). The subterranean freshwater fauna of Yardie Creek Station, North West Cape, Western Australia. *J. R. Soc. West. Aust.* 45(1): 24-32.
- Mees, G.F. (1962b). Additions to the fish fauna of Western Australia. 3. *West. Aust. Fish. Bull.* 9(3): 23-30.
- Mees, G.F. (1963). Description of a new freshwater fish of the family Theraponidae from Western Australia. *J. R. Soc. West. Aust.* 46(1): 1-4.
- Mees, G.F. (1964a). A new fish of the family Scorpaenidae from New Guinea. *Zool. Meded.* 40(1): 1-4.
- Mees, G.F. (1964b). Additions to the fish fauna of Western Australia. 4. *West. Aust. Fish. Bull.* 9(4): 49-50.
- Mees, G.F. (1965). A new fish of the family Apogonidae from tropical Western Australia. *J. R. Soc. West. Aust.* 49(3): 83-84.
- Milward, N.E. (1960). A new species of weed-fish of the genus *Petraites* from Western Australia. *West. Aust. Nat.* 7(5): 134-135.
- Mooi, R.D. and Randall, J.E. (1991). Three new species of the genus *Plesiops* (Teleostei: Plesiopidae) from tropical Australian and adjacent seas. *Copeia* 1991(2): 373-387.
- Nakabo, T. (1982). Revision of the family Draconettidae. *Jap. J. Ichthyol.* 28(4): 355-367.
- Nalbant, V.T. (1957). *Cobitis aurata vallahica*, eine neue Unterart des Balkan-Steinpeitzgers (Pisces, Cobitidae). *Senckenbergiana Biol.* 38(3/4): 209-212.
- Nelson, J.S. (1983). *Creedia alleni* and *Creedia partimsquamigera* (Perciformes: Creediidae), two new marine fish species from Australia, with notes on other Australian creediids. *Proc. Biol. Soc. Wash.* 96(1): 29-37.
- Paulin, C.D. (1986). A new genus and species of morid fish from shallow coastal waters of southern Australia. *Mem. Mus. Vic.* 47(2): 201-206.
- Paulin, C.D. and Moreland, J.M. (1979). *Congiopodus coriaceus*, a new species of pigfish and a redescription of *C. leucopaecilus* (Richardson), from New Zealand (Pisces: Congiopidae). *N. Z. J. Zool.* 6: 601-608.
- Pavlov, A., Ivantsoff, W., Last, P.R. and Crowley, L.E.L.M. (1988). *Kestratherina brevirostris*, a new genus and species of silverside (Pisces: Atherinidae) with a review of atherinid marine and estuarine genera of southern Australia. *Aust. J. Mar. Freshwater Res.* 39: 385-397.

- Paxton, J.R. (1975) *Heraldia nocturna*, a new genus and species of pipefish (family Syngnathidae) from eastern Australia with comments on *Maroubra perserrata* Whitley. *Proc. Calif. Acad. Sc.* **40**(15): 439-447.
- Paxton, J.R., Hoese, D.F., Allen, G.R. and Hanley, J.E. (1989). *Zoological Catalogue of Australia. Vol. 7. Pisces. Petromyzontidae to Carangidae*. Australian Government Publishing Service, Canberra.
- Pietsch, T.W. (1984). A review of the frogfish genus *Rhycherus* with the description of a new species from Western and South Australia. *Copeia* **1984**(1): 68-72.
- Pietsch, T.W. and Grobecker, D.B. (1987). *Frogfishes of the world. Systematics, zoogeography, and behavioral ecology*. Stanford University Press, California.
- Poss, S.G. and Allen, G.R. (1987). New Australian Fishes. Part 18. A new species of *Cocotropus* (Aploactinidae). *Mem. Mus. Vic.* **48**(1): 79-82.
- Poss, S.G. and Eschmeyer, W.N. (1978). Two new Australian velvetfishes, genus *Paraploactis* (Scorpaeniformes: Aploactinidae) with a revision of the genus and comments on the genera and species of the Aploactinidae. *Proc. Calif. Acad. Sci.* **41**(18): 401-426.
- Prince, J.D., Ivanstovff, W. and Potter, I.C. (1982). *Atherinosoma wallacei*, a new species of estuarine and inland water silverside (Teleostei: Atherinidae) from the Swan-Avon and Murray Rivers, Western Australia. *Aust. Zool.* **21**(1): 63-74.
- Randall, H.A. and Allen, G.R. (1977). A revision of the damselfish genus *Dascyllus* (Pomacentridae) with the description of a new species. *Rec. Aust. Mus.* **31**(9): 349-385.
- Randall, J.E. (1980a). Revision of the fish genus *Plectranthias* (Serranidae: Anthiinae) with descriptions of 13 new species. *Micronesia* **16**(1): 101-187.
- Randall, J.E. (1980b). Two new Indo-Pacific labrid fishes of the genus *Halichoeres*, with notes on other species of the genus. *Pac. Sci.* **34**(4): 415-432.
- Randall, J.E. (1981). Revision of the labrid fish genus *Labropsis* with descriptions of five new species. *Micronesia*. **17**(1-2): 125-155.
- Randall, J.E. (1983). A new fish of the genus *Anthias* (Perciformes: Serranidae) from the Western Pacific, with notes on *A. luzonensis*. *Freshwater and Marine Aquarium*. **6**(9): 27-37.
- Randall, J.E. (1988a). Three new Indo-Pacific damselfishes of the genus *Chromis* (Pomacentridae). *Mem. Mus. Vic.* **49**(1): 73-81.
- Randall, J.E. (1988b). Three new damselfishes of the genus *Chromis* (Perciformes: Pomacentridae) from the Indian Ocean. *Revue fr. Aquariol.* **15**(2): 49-56.
- Randall, J.E. and Allen, G.R. (1978). *Anthias pictilis*, a new serranid fish from the subtropical southwestern Pacific. *Revue fr. Aquariol.* **5**(2): 33-36.
- Randall, J.E. and Allen, G.R. (1982). *Chromis pelloura* a new species of damselfish from the northern Red Sea. *Freshwater and Marine Aquarium*. **5**(11): 15-19.
- Randall, J.E. and Allen, G.R. (1987). Four new serranid fishes of the genus *Epinephelus* (Perciformes: Epinephelinae) from Western Australia. *Rec. West. Aust. Mus.* **13**(3): 387-411.
- Randall, J.E. and Allen, G.R. (1989). *Pseudanthias sheni*, a new serranid fish from Rowley Shoals and Scott Reef, Western Australia. *Revue fr. Aquariol.* **15**(3): 73-78.
- Randall, J.E., Allen, G.R. and Steene, R. (1990). *Fishes of the Great Barrier Reef and Coral Sea*. Crawford House Press, Bathurst.
- Randall, J.E. and Carpenter, K.E. (1980). Three new labrid fishes of the genus *Cirrhilabrus* from the Philippines. *Revue fr. Aquariol.* **7**(1): 17-26.
- Randall, J.E., Fraser, T.H. and Lachner, E.A. (1990). On the validity of the Indo-Pacific cardinalfishes *Apogon aureus* (Lacèpede) and *A. fleurieu* (Lacèpede), with description of a related new species from the Red Sea. *Proc. Biol. Soc. Wash.* **103**(1): 39-62.
- Randall, J.E. and Hayashi, M. (1989). *Apogon selas*, a new cardinalfish from the Western Pacific. *Jap. J. Ichthyol.* **36**(4): 399-403.
- Randall, J.E. and Hoese, D.F. (1985). Revision of the Indo-Pacific dartfishes, genus *Ptereleotris* (Perciformes: Gobioidae). *Indo-Pacific Fishes* **7**: 1-36.

- Randall, J.E. and Hoese, D.F. (1988). *Apogon limenus*, a new species of cardinalfish (Perciformes: Apogonidae) from New South Wales. *Rec. Aust. Mus.* **40**: 359-364.
- Randall, J.E., Ida, H. and Moyer, J.T. (1981). A review of the damselfishes of the genus *Chromis* from Japan and Taiwan, with description of a new species. *Jap. J. Ichthyol.* **28**(3): 203-242.
- Randall, J.E. and Kuitert, R.H. (1982). Three new labrid fishes of the genus *Coris* from the western Pacific. *Pac. Sci.* **36**(2): 159-173.
- Randall, J.E. and Kuitert, R.H. (1989). *Cirrhilabrus punctatus*, a new species of labrid fish from the southwestern Pacific. *Revue fr. Aquariol.* **16**(2): 43-50.
- Randall, J.E., Lachner, E.A. and Fraser, T.H. (1985). Revision of the Indo-Pacific apogonid fish genus *Pseudamia*, with descriptions of three new species. *Indo-Pacific Fishes* **6**: 1-23.
- Randall, J.E. and Lavett Smith, C. (1988). Two new species and a new genus of cardinalfishes (Perciformes: Apogonidae) from Rapa, South Pacific Ocean. *Am. Mus. Novit.* **2926**: 1-9.
- Randall, J.E. and Lubbock, R. (1981). A revision of the serranid fishes of the subgenus *Mirolabrichthys* (Anthiinae: *Anthias*) with descriptions of five new species. *Los Angeles Co. Mus. Nat. Hist. Contrib. Sci.* **333**: 1-27.
- Randall, J.E. and Lubbock, R. (1982). Three new labrid fishes of the genus *Cirrhilabrus* from the southwestern Pacific. *Occ. Pap. Bernice P. Bishop Mus.* **25**(2): 1-12.
- Randall, J.E. and McCarthy, L.J. (1987). A new damselfish of the genus *Chromis* (Perciformes: Pomacentridae) from the Persian Gulf and Gulf of Oman. *Revue fr. Aquariol.* **14**(4): 133-136.
- Randall, J.E. and Taylor, L. (1988). Review of the Indo-Pacific fishes of the serranid genus *Liopropoma*, with descriptions of seven new species. *Indo-Pacific Fishes* **16**: 1-47.
- Rennis, D.S. and Hoese, D.F. (1985). A review of the genus *Parioglossus*, with descriptions of six new species (Pisces: Gobiidae). *Rec. Aust. Mus.* **36**: 169-201.
- Rennis, D.S. and Hoese, D.F. (1987). *Aioliops*, a new genus of Ptereleotrine fish (Pisces: Gobioidae) from the tropical Indo-Pacific with descriptions of four new species. *Rec. Aust. Mus.* **39**: 67-84.
- Richardson, J. (1842). Contributions to the ichthyology of Australia. *Ann. Mag. Nat. Hist.* **9**: 384-393.
- Richardson, J. (1844). Ichthyology. In: Richardson, J. and Gray, J.E. (eds). *The Zoology of the voyage of the Erebus and Terror under the command of Captain Sir James Clark Ross, R.N., F.R.S., during the years 1839-1843*. E.W. Janson, London. Vol. 2.
- Roberts, C.D. (1987). New Australian fishes. Part 19. A new species of *Lepidoperca* (Serranidae). *Mem. Mus. Vic.* **48**(1): 83-84.
- Russell, B.C. (1985). Revision of the Indo-Pacific labrid fish genus *Suezichthys*, with descriptions of four new species. *Indo-Pacific Fishes* **2**: 1-21.
- Russell, B.C. (1986). Two new species of *Parascalopsis* (Pisces: Nemipteridae) from north-western Australia, Indonesia and the Philippines. *The Beagle. Occ. Pap. N. Terr. Mus.* **3**(1): 137-142.
- Russell, B.C. (1987). New Australian fishes. Part 20. A new species of *Aplodactylus* (Aplodactylidae). *Mem. Mus. Vic.* **48**(1): 85-87.
- Russell, B.C. (1988). Revision of the labrid fish genus *Pseudolabrus* and allied genera. *Rec. Aust. Mus. Suppl.* **9**: 1-72.
- Scott, J.K. (1976). A review of the fish genus *Neoodax* (Odacidae) of Western Australia with description of a closely allied new genus and species. *Rec. West. Aust. Mus.* **4**(4): 349-373.
- Scott, T.D. (1957). A new blenny (Tripterygiidae) and pipefish (Syngnathidae) from Kangaroo Island, South Australia. *Trans. R. Soc. S. Aust.* **80**: 180-183.
- Séret, B. (1990). *Aulohalaelurus kanakorun* n.sp., a new species of catshark (Carcharhiniformes, Scyliorhinidae, Atelomycterinae) from New Caledonia. *Rec. Aust. Mus.* **42**: 127-136.
- Serventy, D.L. (1937). Zoological notes on a trawling cruise in the Great Australian Bight. *J. R. Soc. West. Aust.* **23**: 69-76, 85-86.
- Shimizu, T. and Hutchins, J.B. (1987). New Australian fishes. Part 21. A new species of *Centroberyx* (Berycidae). *Mem. Mus. Vic.* **48**(1): 89-90.
- Shipway, B. (1950). Notes on the aquatic natural history of the lower Murchison River. *West. Aust. Nat.* **2**(4): 73-77.

- Shipway, B. (1953). Additional records of fishes occurring in the fresh waters of Western Australia. *West. Aust. Nat.* 3(8): 173-177.
- Smith, M.M. (1980). A review of the South African cheilodactylid fishes (Pisces: Perciformes) with descriptions of two new species. *Ichthyol. Bull. Smith. Inst. Ichthyol.* 42: 1-14.
- Smith-Vaniz, W.F. (1976). The sabre-toothed blennies, tribe Nemophini (Pisces: Blenniidae). *Proc. Acad. Nat. Sci. Philad.* Monograph 19: 1-196.
- Smith-Vaniz, W.F. (1987). The sabre-toothed blennies, tribe Nemophini (Pisces: Blenniidae): an update. *Proc. Acad. Nat. Sci. Philad.* 139: 1-52.
- Springer, V.G. (1988). The Indo-Pacific blenniid fish genus *Escenius*. *Smithsonian Contr. Zool.* 465: 1-134.
- Springer, V.G. and Fraser, T.H. (1976). Synonymy of the fish families Cheilobranchidae (=Albetidae) and Gobiesocidae, with descriptions of two new species of *Alabes*. *Smithsonian Contr. Zool.* 234: 1-23.
- Starnes, W.C. (1988). Revision, phylogeny and biogeographic comments on the circumtropical marine percid fish family Priacanthidae. *Bull. Mar. Sci.* 43(2): 117-203.
- Vari, R.P. (1978). The terapon perches (Percoidei; Teraponidae). A cladistic analysis and taxonomic revision. *Bull. Am. Mus. Nat. Hist.* 159(5): 175-340.
- Vari, R.P. and Hutchins, J.B. (1978). New species of terapon perches (Percoidei, Teraponidae) from Australia. *Am. Mus. Novit.* 2654: 1-8.
- Waite, E.R. (1900). Notes on fishes from Western Australia and description of a new species. *Rec. Aust. Mus.* 3: 210-216.
- Waite, E.R. (1905). Notes on fishes from Western Australia, No. 3. *Rec. Aust. Mus.* 6(2): 55-82.
- Weber, M. (1908). *Nova Guinea*. V — Zoolgie. Leiden: E.J. Brill.
- Weber, M. and De Beaufort, L.F. de (1922). *The Fishes of the Indo-Australian Archipelago*. Vol. 4. Leiden: E.J. Brill.
- Whitley, G.P. (1934). Studies in Ichthyology. No. 8. *Rec. Aust. Mus.* 19(2): 153-163.
- Whitley, G.P. (1943). A new Australian shark. *Rec. S. Aust. Mus.* 7(4): 397-399.
- Whitley, G.P. (1944a). New sharks and fishes from Western Australia. *Aust. Zool.* 10(3): 252-273.
- Whitley, G.P. (1944b). Illustrations of some Western Australian fishes. *Proc. R. Zool. Soc. N.S.W.* 1943-1944: 25-29.
- Whitley, G.P. (1945). New sharks and fishes from Western Australia. Part 2. *Aust. Zool.* 11(1): 1-42.
- Whitley, G.P. (1947). New sharks and fishes from Western Australia. Part 3. *Aust. Zool.* 11(2): 129-150.
- Whitley, G.P. (1948). New sharks and fishes from Western Australia. Part 4. *Aust. Zool.* 11(3): 259-276.
- Whitley, G.P. (1951). New fish names and records. *Proc. R. Zool. Soc. N.S.W.* 1949/50: 61-68.
- Whitley, G.P. (1955). Taxonomic notes on fishes. *Proc. R. Zool. Soc. N.S.W.* 1953-1954: 44-57.
- Williams, J.T. (1988). Revision and phylogenetic relationships of the blenniid fish genus *Cirripectes*. *Indo-Pacific Fishes* 17: 1-78.
- Williams, J.T. and Maugé, L.A. (1983). *Cirripectes chelomatus*, a new species of salarine fish (Pisces, Blenniidae). *Bull. Mus. natn. Hist. nat.*, Paris, 4e ser., 5, section A, No. 4: 1139-1149.
- Winterbottom, R. (1984). A review of the gobiid fish genus *Trimma* from the Chagos Archipelago, central Indian Ocean, with the description of seven new species. *Can. J. Zool.* 62: 695-715.
- Winterbottom, R. (1985). Two new gobiid fish species (in *Priolepis* and *Trimma*) from the Chagos Archipelago, central Indian Ocean. *Can. J. Zool.* 63: 748-754.
- Winterbottom, R. and Hoese, D.F. (1988). A new genus and four new species of fishes from the Indo-West Pacific (Pisces; Perciformes; Gobiidae), with comments on relationships. *R. Ont. Mus. Life Sci. Occas. Pap.* No. 37.
- Wongratana, T. (1987). Four new species of clupeoid fishes (Clupeidae and Engraulidae) from Australian waters. *Proc. Biol. Soc. Wash.* 100(1): 104-111.
- Woodland, D.J. and Allen, G.R. (1977). *Siganus trispilos*, a new species of Siganidae from the eastern Indian Ocean. *Copeia* 1977(4): 617-620.
- Zaiser, M.J. and Fricke, R. (1985). *Synchiropus moyeri*, a new species of dragonet (Callionymidae) from Miyake-jima, Japan. *Jap. J. Ichthyol.* 31(4): 389-397.