

Oceanic Shoals Commonwealth Marine Reserve survey reveals new records of xanthid crabs (Crustacea: Brachyura: Xanthidae) from northern Australia

TAMMY IWASA-ARAI^{1,2}, ANNA W. MCCALLUM^{3,*} AND JOANNE TAYLOR³

¹ The University of Melbourne, Parkville, VIC 3010, Australia

² Universidade Federal de Santa Catarina, Departamento de Ecologia e Zoologia, Campus Trindade, CEP 88040-970, Florianopolis, SC – Brazil. Email: araitammy@gmail.com

³ Museum Victoria, GPO Box 666, Melbourne, VIC 3001, Australia. E-mail: amccallum@museum.vic.gov.au jtaylor@museum.vic.gov.au,

* To whom correspondence and reprint requests should be addressed. E-mail: amccallum@museum.vic.gov.au

Abstract

Iwasa-Arai, T., McCallum, A.W. and Taylor, J. 2015. Oceanic Shoals Commonwealth Marine Reserve survey reveals new records of xanthid crabs (Crustacea: Brachyura: Xanthidae) from northern Australia. *Memoirs of Museum Victoria* 73: 1–11.

Sampling in 2012 (SOL5650 and SS2012t07) by the RV *Solander* and RV *Southern Surveyor* resulted in a small collection of decapod crustaceans, including brachyuran crabs. The surveys were undertaken on the shelf off northern Australia, including within the Oceanic Shoals Commonwealth Marine Reserve as part of the Australian Government's National Environmental Research Program Marine Biodiversity Hub. Here we report on nine species of Xanthidae collected during these surveys, including specimens from the subfamilies Actaeinae, Euxanthinae, Liomerinae and Zosiminae. Two species are reported for the first time in Australian waters (*Acteodes mutatus* (Ortmann, 1894) and *Atergatopsis granulata* A. Milne Edwards, 1865).

Keywords

Crustacea, Decapoda, Xanthidae, Timor Sea, Australia, taxonomy

The crab family Xanthidae Macleay, 1838, is one of the largest families of Brachyuran crabs in the world, comprising more than 123 genera and 570 species (De Grave *et al.*, 2009; Ahyong *et al.*, 2011). Xanthids are the most diverse of the crab families in Australian waters represented by more than 168 species and 50 genera (Davie, 2002; Poore, 2004). Although Xanthidae share some diagnostic features such as shape of the carapace, dorsal surface, shape of anterolateral margins, cheliped and ambulatory legs, such characters are the result of convergence (Thoma *et al.*, 2013). Recent studies show that the Xanthidae is polyphyletic and a major revision is required (Lai *et al.*, 2011; Thoma *et al.*, 2013).

Recently, the Australian government established a system of offshore marine reserves. These reserves consist of protected areas of the ocean that are managed for the conservation of their marine life, and include examples of different marine ecosystems and habitats (Department of Environment, 2013). It is difficult to describe the biodiversity within many of these reserves because there has been little biological sampling.

Thus, in late 2012 two surveys were undertaken in the Timor Sea by the RV *Solander* (SOL5650) and RV *Southern Surveyor* (SS2012T07). The RV *Solander* surveyed the proposed Oceanic Shoals Commonwealth Marine Reserve,

describing the fauna to increase the understanding of species within the reserve and contributing to the knowledge base of Australian tropical shelf habitats. This area includes a variety of seabed geomorphic features from depths of 30 to 180 m, including carbonate banks, terraces and pinnacles, recognised in the North and North-West Marine Region Plans as a Key Ecological Feature with potential biodiversity hotspot (Nichol *et al.*, 2013).

The second survey was undertaken as part of the transit of the RV *Southern Surveyor* between Darwin and Cairns in October 2012 (Przeslawski *et al.*, 2013). Brachyuran crabs were not the primary taxa of interest during these surveys but some species were encountered. Here we report on these collections of xanthid crabs in Australian waters of the Timor Sea.

Material and methods

Specimens were collected by staff from the Australian Institute of Marine Science (AIMS), Geoscience Australia (GA), University of Western Australia (UWA) and the Museum & Art Gallery of the Northern Territory (MGNT), aboard the RV *Solander* and during a transit leg aboard the RV *Southern Surveyor* and immediately fixed and preserved in 95% ethanol.

Morphological terminology generally follows Serène (1984) and Ng *et. al.* (2008). Carapace length (Cl) is measured along the dorsal midline from the rostral apex to the posterior margin of the carapace, and carapace breadth (Cb) is the largest measurement between anterolateral teeth along the dorsal line. Specimens are deposited in Museum Victoria (NMV) and comparative material was examined from the Queensland Museum (QM). Other abbreviations: G1 is the first male gonopod; G2 is the second male gonopod; acq. refers to the sample number allocated to the specimen on board the vessel at the time of collection. Photos of specimens were taken at Museum Victoria using an SLR Nikon D300S digital camera with 60 mm Nikkon lens for large specimens, and a Leica DFC500 camera and microscope M205 high resolution digital camera system with Auto Montage software for small specimens. Some photographs of live specimens were taken during the survey.

Systematics

Family **Xanthidae** MacLeay, 1838

Subfamily **Actaeinae** Alcock, 1898

Actaeodes mutatus Guinot 1976

(Figure 1A)

Actaea areolata Dana, 1852b: 162.—Dana, 1855: pl. 8 fig. 1.—A. Milne Edwards, 1865: 264 (not *Actaeodes areolatus* Dana, 1852a: 77).

Actaea areolata? Miers, 1884: 209.—Rathbun, 1924: 16.

Actaeodes areolatus; Guinot, 1967: 561.—Sakai, 1976: 449.

Actaeodes mutatus Guinot, 1976: 247.—Serène, 1984: 133 (key) 134 (key).—Morgan, 1990: 41.—Davie, 2002: 513.

Material examined. NMV J46921, 1 female (Cb = 18.1 mm, Cl = 11.5 mm), northern Australia, Arafura Sea, Survey SS2012t07 Stn 12 (acq. 272), 10°57.76–57.79'S, 136°48.03–48.03'E, 60.6–62.8 m, benthic sled, 18 Oct 2012.

Colour in preservative. Carapace reddish brown with orange granules on the lobes. Ambulatory legs brown with beige setae. Chelipeds reddish brown with orange granules on the lobes dorsally, and beige ventrally, fingers black. Abdomen brown with beige setae.

Remarks. *Acteodes mutatus* occurs across tropical Australia and the Indo-West Pacific. It is similar to *Acteodes semoni* (Ortmann, 1894) but can be distinguished by the basal antennal segment which fills the orbital hiatus that is normally open, whereas in *A. semoni* the basal antennal segment is excluded from the orbit. Another character used to define *A. mutatus* is the subdivision of 3M into three parts. In our specimen this subdivision is not well defined. However, it is likely this character is variable within the species.

Distribution. Indo-west Pacific (Mergui Archipelago, to southern Japan, and east to French Polynesia) (Davie, 2002).

Paractaea rufopunctata plumosa Guinot, in Sakai, 1976

(Figure 1B)

Paractaea rufopunctata forma *plumosa* Guinot, 1969: 248, fig. 21.

Paractaea rufopunctata plumosa Sakai, 1976a: 450, fig. 240b, pl. 159, fig. 1.—Muraoka, 1998: 42.

Paractaea rufopunctata f. *plumosa* Serène, 1984: 121(key), 122(key), pl. 16C.

Material examined. NMV J46922, 1 male (Cb=29.1 mm, Cl=19.7 mm), northern Australia, Arafura Sea, Survey SS2012t07 Stn 08 (acq. 204), 11°13.32–13.38'S, 134°45.12–45.12'E, 27.7–27.9 m, benthic sled, 17 Oct 2012; NMV J54546, 1 female (Cb=27.2 mm, Cl=18.1 mm), off Ningaloo North, SS10/2005 153, 21°59.17–59.79'S, 113°49.2–49.14'E, 165–166 m, beam trawl, 11 Dec 2005; NMV J61124, 1 ovigerous female (Cb=11.9 mm, Cl=8.5 mm), 1 female (Cb=13.1 mm, Cl=9.1 mm) north-western Australia, SS05/2007 188, 12°26.7–26.96'S, 123°36.05–36.59'E, 95–95 m, beam trawl, 6 July 2007; NMV J17772, 2 females (Cb=15.3–15.5 mm, Cl=10.2–10.4 mm), Australia, Queensland, Tryon island (Capricorn Group) 23°14'S, 151°46'E, 1 m, Sep 1970.

Colour in preservative. Carapace dark brown with orange lobes; medial lobe of subdivided 2M, top of 3M, 1P, and inside parts of 5L highlighted with dark orange granules. Ambulatory legs pale brown with patch of orange granules on the dorso-medial region of merus and propodus, beige ventrally. Chelipeds dark brown with orange and dark orange patches; fingers black. Abdomen beige with orange patches between segments.

Remarks. Guinot (1969) described a number of “formes” of this species but only a few are currently considered valid subspecies. The Arafura sea specimen most closely resembles the subspecies *P. rufopunctata plumosa* as the cardiac region is not subdivided into 2 parts, and the black colouration of the fixed finger of the male chelipeds extends onto the palm (Guinot, 1976; Serene 1984). Specimens from Western Australia reported as *Paractaea rufopunctata* (see Poore *et. al.* 2008) also fit the description of *P. rufopunctata plumosa*.

Distribution. Indo-Pacific Oceans including northern Australia (Guinot, 1976; Sakai, 1976; Serène, 1984). Depth range: shallow waters–130 m.

Subfamily **Euxanthinae** Alcock, 1898

***Euxanthus* sp.**

(Figures 1C, 2A–F)

Material examined. NMV J46923, 1 juvenile male (Cb=7.9 mm, Cl=5.6 mm), northern Australia, Timor Sea, Oceanic Shoals Commonwealth Marine Reserve, Survey SOL5650 station unknown (acq. 20052), 12 Sep–6 Oct 2012.

Description. Carapace (Figs. 2A; 2B) about 1.4 times as broad as long, regions well defined, convex, strongly areolated, smooth; 2M entirely divided longitudinally; 3M and 3L distinct, entire; 1L indistinct; 4M fused with 3M; 4L merging with third anterolateral tooth; 2L partially divided transversely with shallow groove on medial margin; 2P distinct; 1R

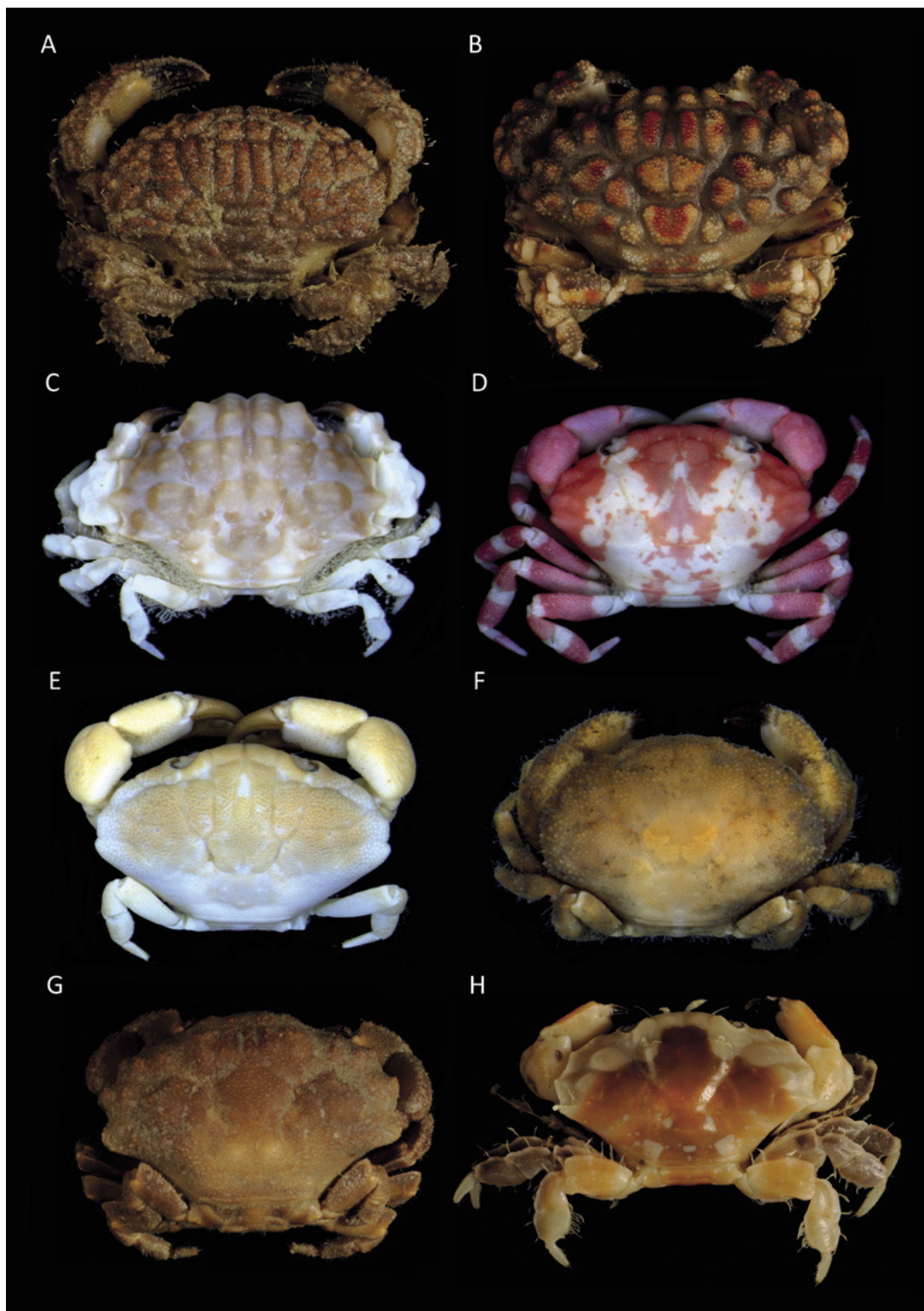


Figure 1. A, *Actaeodes mutatus* Guinot 1976, female, 18.1 X 11.5 mm (NMV J46921); B, *Paractaea rufopunctata plumosa* Guinot, in Sakai, 1976, male, 29.1 X 19.7 mm (NMV J46922); C, *Euxanthus* sp., male, 8.12 X 5.83 mm (NMV J46923); D, *Liomera edwardsi* Kossmann, 1877, male, 9.37 X 5.83 mm (NMV J46927); E, *Liomera margaritata*, male, 16.3 X 9.8 mm (NMV J46928); F, *Atergatopsis granulata* A. Milne Edwards, 1865, female, 19.6 X 12.9 mm (NMV J46929); G, *Atergatopsis alcocki*, male, 32.4 X 22.4 mm (NMV J46930); H, *Lophozozymus dodone* (Herbst, 1801), male, 16.7 X 10.4mm (NMV J46931). Photos: T. Iwasa-Arai.

separated from 2R by indistinct transverse granular ridge, 2R, 3R indistinct. Pterygostomial region setose, tuberculate. Front (Fig. 2C) about 0.3 times carapace width, bilobed, distinctly produced beyond internal orbital angle; lobes separated by V-shaped cleft, which continues on frontal region as shallow groove. Supraorbital margin indistinctly granular, with no clear external orbital tooth. Orbits relatively small, width about 0.2 times carapace width. Eyes with short stalks, smooth; corneas well developed. Anterolateral margin with 4 broadly triangular teeth: first rounded, apices of third tooth at the point of maximum carapace width. Posterolateral margin concave, convergent posteriorly. Median part of posterior carapace margin almost straight.

Antennules folding transversely. Basal antennal segment large, smooth, subrectangular, occupying entire space between antennular fossa, internal orbital angle, filling orbital hiatus; flagellum arising from distal margin, not reaching outer edge of orbit. Posterior margin of epistome with median projection.

Outer surface of third maxillipeds smooth (Fig. 2D). Merus subquadrate, median length about half that of ischium, with 2 shallow depressions on either side of low, submedian, smooth ridge. Margins smooth, anterior, internal and external margins slightly concave. Ischium subrectangular, inner margin with short, stiff setae; with shallow, longitudinal submedian groove. Exopod smooth, tapering toward distal end, falling short of anterior edge of merus; flagellum long.

Surface of thoracic sternum smooth, anterior region elongate. Sternites 1–2 completely fused to form triangular plate. Sternites 3–4 completely fused, with suture visible at sternite edges and represented by a transverse furrow; sternite 4 with oblique depression on either side of median. Intersternal sutures depressed, giving sternites 5–7 a raised appearance. Sterno-abdominal cavity deep; anterior limit reaching to imaginary line joining posterior edges of cheliped coxae; tubercle for abdominal locking mechanism on sternite 5 slightly nearer to suture with sternite 4.

Chelipeds similar, subequal. Fingers (Fig. 2F) shorter than palm, cutting edges with 4 teeth, brown, tips pointed. Dactylus slightly curved, with 3 granulate ridges and deep submarginal groove along length, stiff short setae on upper margin. Fixed finger slightly deflexed with 3 smooth ridges and broad submarginal groove continuing from palm. Palm outer surface with 4 large nodules, with 2 irregular rows of granules near convex proximal-lower margin; inner surface relatively smooth. Carpus short, dorsal and ventral surface smooth, outer surface with 2 prominent round expansions, upper margin with 2 small nodules. Inner surface of fingers, palm and carpus coapted against pterygostomial/hepatic region of carapace. Merus rugose, ventral surface tuberculose, slightly longer than carpus, with rectangular, ventro-distal tooth apposed against carpus.

Ambulatory legs (Fig. 2E) smooth, edges with setae; second leg longest, coxa-to-dactylus length about 0.8 times carapace width. Merus subrectangular and flattened in cross-section. Dorsal surface of carpus with one large nodule and serrated anterior edge. Propodus subquadrate, with two smaller nodules on the dorsal surface, short setae; terminates distally in curved chitinous claw.

External surface of male abdomen, telson smooth.

Abdominal somites 1–2 subtrapezoidal, with two shallow longitudinal grooves on either side of central raised region. Somites 3–5 immovably fused, with a transverse depression between somites 3 and 4; lateral margins slightly concave. Somite 6 quadrangular, central region slightly raised, lateral margins slightly concave. Telson subtriangular with rounded tip, lateral margins relatively straight, median length about 0.7 times basal width, about 0.7 times shorter than penultimate somite.

G1 not observable, G2 very reduced in size, without setae or spines.

Colour in preservative. Carapace pale rose with pale orange patches in lateral part of 5L, 1R, bottom of 4M, medial part of 2M and 2L, and the anterolateral edges of anterolateral teeth; ambulatory legs, chelipeds and abdomen pale rose.

Remarks. As the material described herein is limited to a single small juvenile male, we hesitate to describe it as a new species at this stage. *Euxanthus* sp. is similar to *Euxanthus ruali* Guinot, 1971 and *Euxanthus herdmani* Laurie, 1906 which both have four teeth on the anterolateral margin of the carapace and a smooth dorsal surface. The material is most similar to *E. herdmani* described from the Philippines (see figure 1D, Mendoza and Ng, 2010), but can be distinguished by: the carapace shape which is narrower in *E. herdmani* (Cb/Cl holotype= 1.33) than *Euxanthus* sp. (Cb/Cl= 1.41); anterolateral teeth that are acute and noticeably larger in *Euxanthus* sp. than *E. herdmani*; the frontal part of the carapace, in which the frontal and orbital lobes are of similar size in *E. herdmani*, while in *Euxanthus* sp. the frontal lobes are distinctly larger than the orbital lobes. *Euxanthus* sp. can be distinguished from *E. ruali* from New Caledonia and Japan, by the anterolateral teeth which are unequal in size (last two larger) in *E. ruali*, and subequal in *Euxanthus* sp.

Subfamily **Liomerinae** Sakai, 1976

Liomera edwardsi Kossmann, 1877

(Figure 1D)

Liomera edwardsi Kossmann, 1877: 28.

Carpilodes edwardsi.—Miers, 1886: 133(part).—Odhner, 1925: 13, pl. 1, fig. 5.—Holthuis, 1953: 13.—Serène & Luom, 1960: 176 (key).

Carpilodes laevis.—Milne-Edwards, Nobili, 1906b: 215 (part).—Michel, 1964: 23 (not A. Milne-Edwards, 1873).

Carpilodes sayademalensis Rathbun, 1911: 211, pl. 17, fig. 5.—Ward, 1942: 83.

Liomera edwardsi.—Guinot, 1967: 266.—Serène, 1968: 72.—Sakai, 1976: 393, fig. 209a, pl. 139, fig. 5.—Muraoka, 1998: 38.—Davie, 2002: 543.

Liomera (Liomera) edwardsi.—Serène, 1984: 49 (key), 54 (key), 58, pl. 5C.

Material examined. NMV J46927, 1 male, Cb=9.4 mm, Cl=5.8 mm (acq. 10282) Survey SOL5650, Stn 014 BS002, 12°4.133'–4.133'S, 127°26.164'–26.164'E, 36–34 m, Benthic sled, 17/09/2012; NMV J46926, 1 female Cb=14.2 mm, Cl=9.2 mm (acq. 10100) Survey SOL5650, Stn 019 GR026, 12°4.842, 127°25.815'E, 49 m, Smith Mac, 18/09/2012; NMV J46924, 1 female, Cb=10.8 mm, Cl=7.1 mm (acq. 10327) Survey SOL5650, Stn 016 BS004, 12°4.491'S, 127°25.742'E,

45 m, Benthic sled, 17/09/2012; NMV J46925, 1 male, Cb=15.6 mm, Cl=9.8 mm (acq. 20251) Survey SOL5650, Stn 074 BS022, 12°4.49'–4.52'S, 127°26.62'–26.62'E, 59–66 m, Benthic sled, 03/10/2012.

Colour in preservative. Carapace crimson with white patches mostly on 3R, sometimes extending to 5L and 2L. Ambulatory legs crimson with bands of white at the distal and proximal ends; chelipeds crimson with black fingers. Abdomen mostly white with crimson patches. All specimens presented crimson and white colouration, but differ in proportion of white.

Remarks. *Liomera edwardsi* was the only species with more than one specimen collected during the Timor Sea Oceanic Shoals survey. *Liomera edwardsi* is very similar to *L. tristis* (Dana, 1852), *L. laevis* (A. Milne-Edwards, 1873), *L. sagamiensis* (Sakai, 1939) and *L. nigropunctata* (Serène & Van Luom, 1960), but can be distinguished by a projecting areole well separated from 2M and 1F (Serène, 1984) on the dorsal surface. This species was previously recorded in Australia by Odhner (1925) from one specimen collected from Holothuria Bank, Northwest Australia.

Distribution. Comoro Islands (Mayotte), Madagascar (Tulear), Djibouti and Red Sea, South China Sea, Japan (Kii Peninsula), Solomon Islands (Peros Bankos), Northwest Australia, Australia (Holothuria Bank) (Odhner, 1925; Sakai, 1976; Serène, 1984). Depth range 15–59 m.

***Liomera margaritata* (A. Milne-Edwards, 1873)**

(Figure 1E)

Carpilodes margaritatus Milne-Edwards A., 1873: 182, pl. 5, fig. 2.—Henderson, 1893: 353. —Whitelegge, 1897: 131.—Alcock, 1898: 85.—Odhner, 1925: 24, pl. 2, fig. 4.—Gravelly, 1927: 146, pl. 21, fig. 26.—de Man, 1929a: 1. —de Man, 1929b: 2.—Chopra & Das, 1937: 395, fig. 5.—Sakai, 1939: 476, fig. 36.—Lin, 1949: 22.—Serène & Luom, 1960: 174, 178(key), 185, fig. 2F, pl. 2D.—Buitendijk, 1960: 261, fig. 3b.—McNeill, 1968: 74.

Liomera margaritata.—Sakai, 1965b: 144, pl. 72, fig. 3.—Guinot, 1967: 266. —Serène, 1968: 72. —Sakai, 1976: 396, fig. 211. —Dai & Yang, 1991: 271, fig. 145 (2), pl. 34 (2).—Yu et al., 1996. —Jeng, 1997.—Davie, 2002: 543.

Liomera (Liomera) margaritata.—Serène, 1984: 63, fig. 23, pl. 7A.

Chlorodius exigui Targioni Tozzetti, 1877: 48, pl. 4, figs 1-5, 9.—Odhner, 1925: pl. 5, figs 8, 8a.

Carpilodes striatus de Man, 1887: 232, pl. 8, fig. 1.

Carpilodes ruber.—Ortmann, 1893: 468. (not A. Milne Edwards, 1865)

Carpilodes diodoreus Nobili, 1906a: 403.—Nobili, 1906b: 216, pl. 10, fig. 9.—Klunzinger, 1913: 138.

Not *Carpilodes rugipes* (Heller, 1861).—Rathbun, 1910: 351.

Not *Carpilodes margaritatus*.—Lanchester, 1900b: 731.= aff. *Atergatopsis amoyensis* de Man, 1879.

Material examined. NMV J46928, 1 male, Cb=16.3 mm, Cl=9.8 mm (acq. 292) Survey SS2012t07, Stn 11, 10°57.66'–57.73'S, 136°47.68'–47.94'E, 108.8–92.8 m, Benthic sled, 18/10/2012. NMV J10923, 1 female, Cb=9.1 mm, Cl=5.7 mm, Australia, Queensland, Dingo Beach. Coll. 08/08/1971.

Comparative material examined. QM W36046, 1 male, Cb=14.6 mm, Cl=9.4 mm, Great Barrier Reef Seabed Diversity Survey. Site id: 2731: 22°2.7'S, 150°36.3'N, 53.4 m, RV *Lady Basten*,

23/09/2004; QM W37911, 1 male, Cb=21.6 mm, Cl=13.4 mm, Site id: 2126: 22°59.7'S, 149°58.5'N, 52.9 m, RV *Lady Basten*, 29/09/2004.

Colour in life. Carapace orange with white anterolateral margins, 1P, 2P and 3R white. Ambulatory legs orange. Chelipeds orange dorsally and white ventrally with dark brown fingers. Abdomen white (Fig. 5).

Colour in preservative. Carapace pale orange with white anterolateral margins, 1P, 2P and 3R white. Ambulatory legs light orange. Chelipeds orange dorsally and white ventrally with dark brown fingers. Abdomen white.

Remarks. Within the genus *Liomera*, this species is characterised by a completely divided 2M region, which makes it similar to *Liomera monticulosa* (A. Milne-Edwards, 1873), *Liomera rugipes* (Heller, 1861), and *Liomera rubra* (A. Milne-Edwards, 1865). It differs from the latter three species, which have 1M separated from the interior part of 2M. Serène (1984) describes *L. margaritata* with well-defined regions 4L, 5L, and 6L, but in our specimens these regions are fused and not well defined. Also, colour in live specimens are different, described as uniformly pale violet by Serène (1984), while our specimens are orange colour with white anterolateral margins. As the G1 morphology agrees well with illustrations of *L. margaritata* provided by Serène (1984), we conclude that the variation described above is likely to be intra-specific.

Distribution. Queensland (Great Barrier Reef, NE coast); Indo-west central Pacific Oceans (Madagascar and Red Sea to Japan, New Guinea, Samoa, New Caledonia). Depth range subtidal–107 m.

Subfamily **Zosiminae** Alcock, 1898

***Atergatopsis alcocki* (Laurie, 1906)**

(Figure 1G)

Actaea alcocki Laurie, 1906: 403.—Odhner, 1925: 43, pl. 3, fig. 4.—Balss, 1938b: 54, pl. 2, figs 3–4.

Xantho bowensis.—Rathbun, 1923:103, pl. 20, figs 1-3.

Atergatopsis alcocki.—Guinot, 1969: 232, fig. 15a-c.—Sakai, 1976: 413, fig. 218.—Serène, 1984: 141 (key), 142 (key).

Aff. *Atergatopsis alcocki*.—Serène, 1984: 143 (list), pl. 20 E.

Material examined. NMV J46930, 1 male, Cb=32.4 mm, Cl=22.4 mm (acq. 118) Survey SS2012t07, Stn 02, 11°13.78'–13.78'S, 134°44.47'–44.44'E, 23.3 m, Benthic sled, 17/10/2012.

Colour in preservative. Carapace brown, darker in the first half, until last anterolateral tooth; ambulatory legs brown/orange; chelipeds brown with black chelae; abdomen beige.

Remarks. The specimen from the Timor Sea agrees well with the description in Laurie (1906). The holotype is described by Laurie as yellowish with a circular brown patch in the gastric region in live specimens. The single male specimen from the Timor Sea lacked the brown patch as does the specimen described by Rathbun (1923, plate 20) collected in Queensland, Australia.

Distribution. Sri Lanka, Singapore, Japan (Kii Peninsula), Australia (Queensland and Northern Australia) (Laurie, 1906; Rathbun, 1923; Sakai, 1976). Depth range 15–35 m.

***Atergatopsis granulata* A. Milne-Edwards, 1865**

(Figure 1F)

Atergatopsis granulatus A. Milne-Edwards, 1865: 255, pl 13, figs 2, 2b.—Kossmann, 1877: 22.—Cano, 1889b: 190.—Nobili, 1906b:235.—Klunzinger, 1913: 156(60).—Balss, 1935: 137; 1938: 55, pl. 3, fig.3.—Monod, 1938:122, fig. 14.—Buitendijk, 1960: 283.—Guinot, 1964: 14, fig. 2a, b; 1967c: 262; 1971: 1074.—Serène, 1968: 74.—Ribes, 1978: 126.—Serène, 1984: 143, fig 83, pl. 20b.

Not *Atergatopsis granulatus*.—Miers 1884b: 529 = not *Atergatopsis*, according to Buitendijk (1960).

Not *Atergatopsis granulatus*.—Miers 1886: 123 = *Atergatopsis tweediei* Balss, 1938b, according to Buitendijk (1960).

Not *Atergatopsis granulatus*.—Balss, 1924 a: 6, fig. 1 = *Banareia parvula* (Krauss, 1843).

Material examined. NMV J46929, 1 female, Cb=19.6 mm, Cl=12.9 mm (acq. 10327) Survey SOL5650, Stn 016 BS004, 12°4.8'–12°4.8'S, 127°25.74'–127°25.77, 45–46 m, Benthic sled, 17/09/2012.

Colour in preservative. Carapace pale orange with a pair of dark orange spots anterior to 5L. Ambulatory legs same colour as carapace. Chelipeds pale orange with black fingers. Abdomen beige.

Remarks. While this is the first record of this species in Australian waters, the species has previously been recorded from across the Indian Ocean and as far as the South China Sea. It is very similar to *Atergatopsis tweediei* Balss, 1938 described from the Seychelles, South-East Asia, and Papua New Guinea. Both species have chelipeds with chisel-shaped fingers, and a single large subproximal tooth on the pollex. According to Serène (1984) the two species can be distinguished by the amount of granulation on the carapace. *Atergatopsis tweediei* is entirely smooth on most of its median carapace, with granules only on the anterolateral margins. While the carapace of *A. granulata* is entirely covered in granules, they are smaller and less numerous in the median and posterior parts. In our specimen, region 3M of the carapace is almost smooth but all other regions are granular.

Distribution. Madagascar, Zanzibar, Pakistan (Karachi), Aldabra, South China Sea and New Guinea (Serène, 1984). Depth range: 26–46 m.

***Lophozozymus dodone* (Herbst, 1801)**

(Figure 1H)

Cancer dodone Herbst, 1801: 37, pl. 52, fig. 5.

Xantho radiatus Milne-Edwards H., 1834: 398.

Xantho lamelligera White, 1848: 225.

Atergatis lateralis White, 1848: 225.—Adams & White, 1848: 39, pl. 8, fig. 1.

Xantho nitidus Dana, 1852a: 74.—Dana, 1852b: 166.—Dana, 1855: pl. 8, fig. 4a-b.

Atergatis elegans Heller, 1862: 519.—Heller, 1865: 7, pl. 1, fig. 3.

Lophozozymus radiatus Milne-Edwards A., 1873: 206 (part).

Lophozozymus dodone Hilgendorf, 1879: 789 (nomen nudum).—

Miers, 1884: 517, 527.—Henderson, 1893: 361.—Ortmann, 1893: 457.—Ortmann, 1894b: 50.—Alcock, 1898: 108.—Calman, 1900: 6.—Borradaile, 1902: 361.—Laurie, 1906: 399.—Rathbun, 1907: 39.—Rathbun, 1911: 214.—Bouvier, 1915: 289.—Odhner, 1925: 82.—Balss, 1938a: 39.—Ward, 1942: 85.—Tweedie, 1950: 115.—Barnard, 1950: 218, fig. 39f, g.—Buitendijk, 1960: 294, fig. 7b.—Edmondson, 1962: 230, fig. 3f.—Michel, 1964: 27.—Sakai, 1965a: 45, pl. 6, fig. 6.—Sankarankutty, 1966: 50.—Guinot, 1967: 266.—Garth, 1973: 319.—Sakai, 1976: 407, pl. 146, fig. 2.—Serène, 1977: 50.—Guinot, 1979: 64, pl. 8, fig. 1-1a.—Kensley, 1981: 44.—Serène, 1984: 168 (key), 169 (key), 170, pl. 24E.—Sakai K., 1999: 34, pl. 18B. —Davie, 2002: 543.

Lophozozymus dodone.—de Man, 1887: 270, pl. 10, fig. 2.

Not *Lophozozymus dodone* —Rathbun, 1906: 846, pl. 8, figs 2, 2a.= *Lophozozymus rathbunae* Ward, 1942.

Not *Lophozozymus dodone* —Forest & Guinot, 1961: 54, fig. 39.= *Lophozozymus glaber* Ortmann, 1893.

Material examined. NMV J46931, 1 male, Cb=16.7 mm, Cl=10.4 mm (acq. 20921) Survey SOL5650, Stn 063 BS020, 11°23.83'–23.81'S, 126°54.49'–54.46'E, 88–85 m, Benthic sled, 01/10/2012.

Colour in preservative. Front and anterolateral margins of carapace beige, with remnants brownish orange. Ambulatory legs pale orange, patches of 3R and 1P and 6L beige. Chelipeds pale orange in dorsal view and beige in ventral view with black fingers. Abdomen beige with segments 1 and 2 brownish orange.

Remarks: Widely distributed in tropical Australia, *L. dodone* is distinctive in the genus by its rugosities and punctuations on the carpus and external face of the cheliped palm of the male (Serène, 1984). *Lophozozymus dodone* was compared with images available of specimens collected from the central Pacific (Legall and Poupin, accessed 2013) and it seems that *L. dodone* can have different colour patterns also in life, varying from the carapace being dark brown with the front and anterolateral margins beige to the carapace being vivid red with anterolateral margins white, differing also in the amount of white/beige on the front and anterolateral margins, sometimes with white patches that can extend until the second half of the carapace.

Lophozozymus dodone was previously only known from shallow waters (7–8 m) but is recorded here from a depth of 88 m.

Distribution. Hawaii, Tahiti, Fiji, Cocos-Keeling, South Africa, Japan (Amami Group and Ishigaki Island), Andaman Sea, and Australia (Northern Australia) (Sakai, 1976) Depth range 7–88 m.

Acknowledgments

We are grateful to Chris Rowley and Melanie Mackenzie (Museum Victoria) for collection management support, the staff from the Australian Institute of Marine Science (AIMS), Geoscience Australia (GA), University of Western Australia (UWA) and the Museum and Art Gallery of the Northern Territory (MGNT), who collected specimens during the surveys.

Surveys were undertaken by the National Environmental Research Program (NERP) program, an Australian Government initiative. The NERP Marine Biodiversity Hub is a collaborative partnership between the Charles Darwin University, University of Tasmania, University of Western Australia, CSIRO, Geoscience Australia, Australian Institute of Marine Science and Museum Victoria.

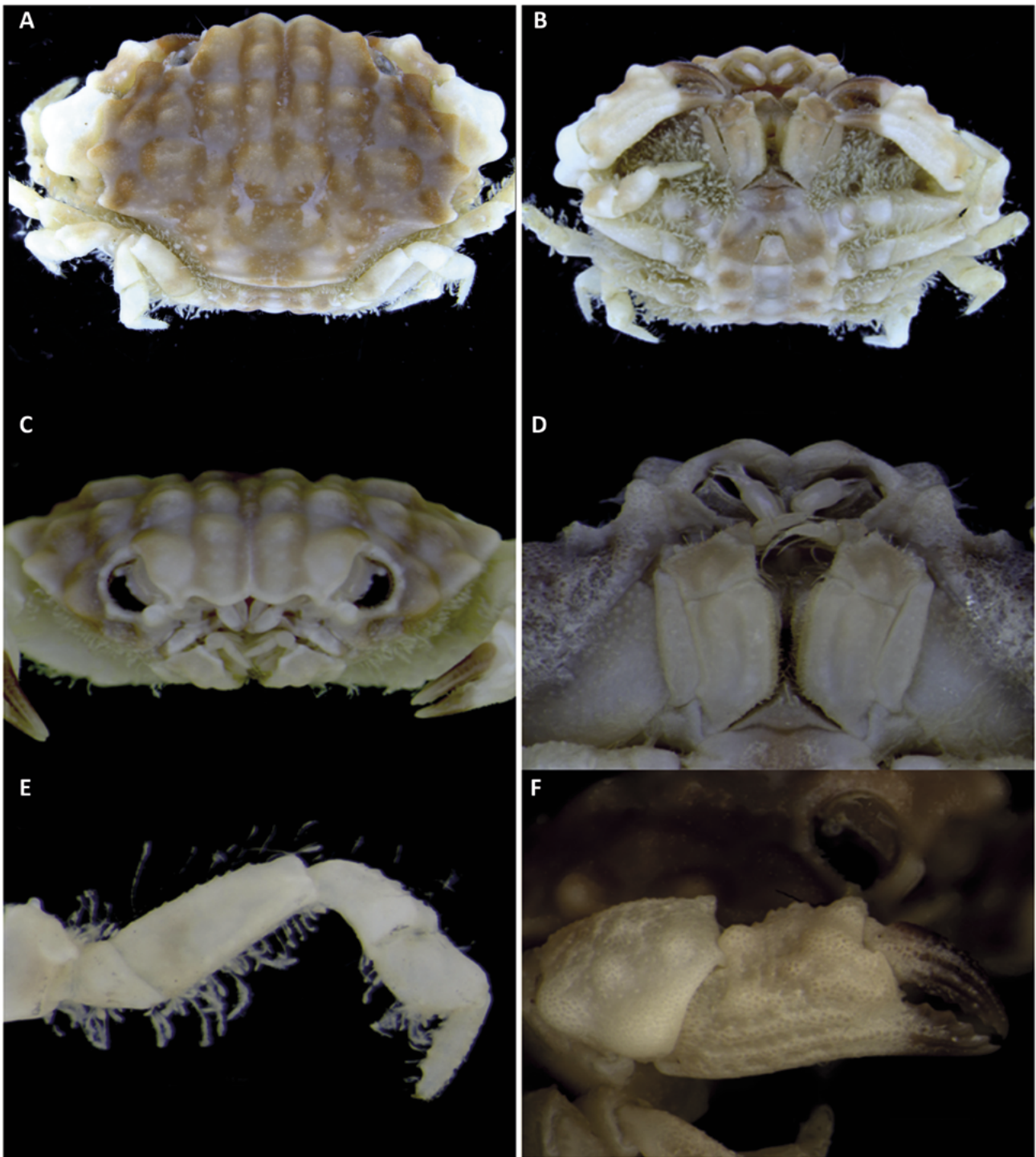


Figure 2. *Euxanthus* sp., male (NMV J46923) (7.9 X 5.6mm): A, carapace, dorsal view; B, carapace, ventral view; C, frontal view; D, third maxilliped; E, fourth right leg; F, right cheliped.

We also thank Mark Elgar (University of Melbourne) for his support, and Peter Davie (Queensland Museum) for taxonomic advice and the loan of comparative material.

Finally, we thank the Program *Science Without Borders*, Conselho Nacional de Desenvolvimento Científico e Tecnológico (CNPq), Brazil.

References

- Adams, A. and A. White, 1848. Crustacea. Part 1. In: A. Adams (ed.), *The zoology of the voyage of H.M.S. Samarang*, under the command of Captain Sir Edward Belcher, during the years 1843-1846, 1-32, pls 1-6. Benham & Reeve, London.
- Ahyong, S., Lowry, J.K., Alonso, M., Bamber, R.N., Boxshall, G.A., Castro, P., Gerken, S., Karaman, G.S., Goy, J.W., Jones, D.S., Meland, K., Rogers, D.C., and Svavarsson, J. 2011. Subphylum Crustacea. In: Zhang, Z.Q. (ed), *Animal biodiversity: an outline of higher-level classification and survey of taxonomic richness*. *Zootaxa*, 3148: 165-191.
- Alcock, A.W., 1898. Materials for a carcinological fauna of India. No. 3. The Brachyura Cyclometopa. Part 1. The Family Xanthidae. *Journal of the Asiatic Society of Bengal*, Calcutta, 67, part 2(1): 67-233.
- Balss, H., 1935. Brachyura of the Hamburg Museum expedition to south-western Australia, 1905. *Journal of the Royal Society of Western Australia* 21: 113-151, fig. 1-5, pl. 13.
- Balss, H., 1938a. Die Dekapoda Brachyura von Dr. Sixten Bock's Pazifik Expedition 1917-1918. *Göteborgs Kungliga Vetenskaps- och Vitterhets-Samhälles Handlingar*, Ser. B, 5(7): 1-85, figs 1-18, pls 1-2.
- Balss, H., 1938b. Über einige Xanthidae (Crustacea, Dekapoda) von Singapore und Umgebung. *Bulletin of the Raffles Museum*, 14: 48-63, figs 1-2, pls 2-3.
- Barnard, K.H., 1950. Descriptive catalogue of South African Decapod Crustacea (Crabs and Shrimps). *Annals of the South African Museum*, 38: 1-837, figs 1-154.
- Borradaile, L.A., 1902. Marine Crustaceans. III. The Xanthidae and some other crabs. In: J.S. Gardiner (ed.), *The Fauna and Geography of the Maldive and Laccadive Archipelagoes, being the Account of the Work carried on and the Collections made by an Expedition during the years 1899-1900*. *Transactions of the Linnean Society of London*, (Zoology), 1(3): 237-271, figs 41-60. Cambridge University Press.
- Bouvier, E.L., 1915. Décapodes marcheurs (Reptantia) et Stomatopodes recueillis à l'île Maurice par M. Paul Carié. *Bulletin scientifique de la France et de la Belgique*, sér. 7, 48(3): 178-318 (1-141), figs 1-42, pls 4-7. [1915/V]
- Buitendijk, A.M., 1960. Biological results of the Snellius Expedition XXI. Brachyura of the families Atelecyclidae and Xanthidae (Part I). *Temminckia* 5: 252-338.
- Calman, W.T., 1900. On a collection of Brachyura from Torres Straits. *Transactions of the Linnean Society of London*, (Zool.), (2) 8(1): 1-50, pls 1-3. [1900/IX]
- Cano, G., 1889. Viaggio della R. Corvetta Vettor Pisiano attorno al globo. Crostacei Brachiuri ed Anomuri. *Boll. Soc. Nat. Napoli*, ser. 1, 3: 169-268, pl. 7.
- Chopra, B.N. & K.N. Das, 1937. Further notes on Crustacea Decapoda in the Indian Museum. IX. On three collections of crabs from Tavoy and Mergui Archipelago. *Record of the Indian Museum*, Calcutta, 39(4): 377-434, figs 1-21, pl. 6.
- Dai, A. & S. Yang, 1991. Crabs of the China Seas, i-iv, 1-608, figs 1-295, pls 1-74. China Ocean Press, Beijing and Springer-Verlag, Berlin Heidelberg New York Tokyo, English edition. (Translation from Chinese original 1986.)
- Dana, J.D., 1852a. *Conspectus Crustaceorum, etc., Conspectus of the Crustacea of the Exploring Expedition under Capt. C. Wilkes, U.S.N., including the Paguridea, continued, the Megalopidea, and the Macroura, Paguridea, continued, and subtribe Megalopidea*. *Proceedings of the Academy of Natural Sciences Philadelphia*, 6: 73-86 (or 6-28).
- Dana, J.D., 1852b. Crustacea. United States Exploring Expedition during the years 1838, 1839, 1840, 1841, 1842, under the command of Charles Wilkes, U.S.N., 13(pt. 1): i-viii, 1-685, pl. 8.
- Dana, J.D., 1855. Crustacea. United States Exploring Expedition during the years 1838, 1839, 1840, 1841, 1842 under the command of Charles Wilkes, U.S.N., 14(Atlas): 1-27, pls 1-96.
- Davie, P.J.F., 1989. New records of *Demania* (Crustacea: Decapoda: Xanthidae) from Australia. *Memoirs of the Queensland Museum* 27: 123-128.
- Davie, P.J.F., 2002. *Crustacea: Malacostraca: Eucarida (Part 2): Decapoda - Anomura, Brachyura*. Vol. 19.3B. CSIRO Publishing: Melbourne. xiv, 641 pp.
- Davie, P. 2013., Xanthidae MacLeay, 1838. World Register of Marine Species. <http://www.marinespecies.org/aphia.php?p=taxdetails&id=106769> on 2013-11-15.
- Davie, P.J.F., and Turner, P.A. 1995. A new species and a new record of *Hepatoporus* from north-western Australia (Crustacea: Decapoda: Xanthidae). *Memoirs of the Queensland Museum* 37: 83-86.
- De Grave, S., Pentcheff, N.D., Ahyong, S.T., Chan, T.-Y., Crandall, K.A., Dworschak, P.C., Felder, D.L., Feldmann, R.M., Fransen, C.H.J.M., Goulding, L.Y.D., Lemaitre, r., Low, M.E.Y., Martin, J.W., Ng, P.K.L., Schweitzer, C.E., Tan, C.G.S., Tshudy, S.H.D., and Wetzer, R. 2009. A classification of living and fossil genera of decapod crustaceans. *Raffles Bulletin of Zoology, Supplement* 21: 1-109.
- Department of Environment. 2013. Commonwealth marine reserves. <http://www.environment.gov.au/topics/marine/marine-reserves/overview>
- Edmondson, C.H., 1923. Crustacea from Palmyra and Fanning Islands. *Bulletin of the Bernice P. Bishop Museum*, Honolulu, 5: 1-43, figs 1-3, pls 1-2.
- Edmondson, C.H., 1962. Xanthidae of Hawaii. *Occasional Papers of the Bernice P. Bishop Museum*, Honolulu, 22(13): 215-309, figs 1-34.
- Forest, J., and D. Guinot, 1961. Crustacés Décapodes Brachyours de Tahiti et des Tuamotu. In: *Expédition française sur les récifs coralliens de la Nouvelle Calédonie*. Vol. Préliminaire: i-xi, 1-195, figs 1-178, pls 1-18, 7 maps, tables 1-3. Éditions de la Fondation Singer-Polignac.
- Garth, J.S., 1973. The brachyuran crabs of Easter Island. *Proceedings of the California Academy of Sciences*, 39(17): 311-336, figs 1-6.
- Garth, J.S., and H.S. Kim, 1983. Crabs of the family Xanthidae (Crustacea: Brachyura) from the Philippine Islands and adjacent waters based largely on collections of the U.S. Fish Commission Steamer *Albatross* in 1908-1909. *Journal of Natural History*, London, 17: 663-729.
- Grant, F.E., and McCulloch, A.R. 1906. On a collection of Crustacea from the Port Curtis district, Queensland. *Proceedings of the Linnean Society of New South Wales* 1906: 2-53, pls 51-54.
- Gravely, F.J., 1927. Decapoda (excl. Paguridea) and Stomatopoda. In: *The littoral fauna of the Krusadai Island in the Gulf of Manaar with Appendices on the Vertebrates and Plants*. *Bulletin of the Madras Government Museum*, 1(1): 135-155, figs 1-2, pls 19-26.
- Guinot, D., 1964. Crustacés Décapodes Brachyours (Xanthidae) des campagnes de la Calypso en Mer Rouge (1952), dans le Golfe Persique et à l'île Aldabra (1954). *Mémoires du Muséum national d'Histoire naturelle*, Paris, (A) 32(1): i-iii, 1-108, figs 1-57, pls 1-12.

- Guinot, D., 1967. La faune carcinologique (Crustacea Brachyura) de l'Océan Indien Occidental et de la Mer Rouge: Catalogue, remarques biogéographiques et bibliographiques. In: Réunion de Spécialistes C.S.A. sur les Crustacés, Zanzibar 1964. *Mémoires de l'Institut fondamental d'Afrique Noire*, 77 (1966): 235-352, pls 1-26, 1 table.
- Guinot, D., 1969. Sur divers Xanthidae notamment sur *Actaea* de Haan et *Paractaea* gen. nov. (Crustacea Decapoda Brachyura). *Cahiers du Pacifique*, 13: 223-267, figs 1-36.
- Guinot, D., 1971. Recherches préliminaires sur les groupements naturels chez les Crustacés Décapodes Brachyours. VIII. Synthèse et bibliographie. *Bulletin du Muséum national d'Histoire naturelle Paris, Deuxième Série* 42: 1063-1090.
- Guinot, D., 1976. Constitution de quelques groupes naturels chez les Crustacés Décapodes Brachyours. I. La superfamille des Bellioidea et trois sous-familles de Xanthoidea (Polydectinae Dana, Trichiinae De Haan, Actaeinae Alcock). *Mémoires du Muséum National d'Histoire Naturelle*, Paris, ser. A (Zoologie) 97: 1-308, pls 301-319.
- Guinot, D., 1979. Données nouvelles sur la morphologie, la phylogénèse et la taxonomie des Crustacés Décapodes Brachyours. *Mémoires du Muséum national d'Histoire naturelle*, Paris, (Zoologie), 112: 1-354, figs 1-70, pls 1-27, 5 tables.
- Guinot, D., 1978. Principes d'une classification évolutive des Crustacés Décapodes Brachyours. *Bulletin Biologique de la France et de la Belgique* 112: 211-292.
- Hale, H.M., 1927. *The crustaceans of South Australia. Part 1*. South Australian Government Printer: Adelaide. 201 pp.
- Heller, C., 1862. Neue Crustaceen, gesammelt während der Weltumsegelung der k.k. Fregatte *Novara*. Zweiter vorläufiger Bericht. *Verhandlungen der kaiserlich-königlichen zoologisch-botanischen Gesellschaft in Wien*, 12: 519-528.
- Heller, C., 1863. Die Crustaceen des südlichen Europa. Crustacea Podophthalmia. Mit einer Übersicht über die horizontale Verbreitung sämtlicher europäischer Arten: i-xi, 1-336, pls 1-10.
- Heller, C., 1865. Die Crustaceen. I. In: Reise der österreichischen Fregatte *Novara* um die Erde in den Jahren 1857-1859 unter den Befehlen des Commodors B. von Willerstorff-Urbair, Zoologischer Theil, 2(pt. 3): 1-280, pls 1-25.
- Henderson, J.R., 1893. A contribution to Indian Carcinology. *The Transactions of the Linnean Society of London*, (series 2, Zoology) 5(1): 325-458, pls 36-40.
- Herbst, J.F.W., 1801. Versuch einer Naturgeschichte der Krabben und Krebse nebst einer systematischen Beschreibung ihrer verschiedenen Arten, 3(2): 1-46, pls 51-54.
- Hess, W., 1865. *Beiträge zur Kenntniss der decapoden-krebse ost-australiens*. Druck von Carl Georgi.
- Hilgendorf, F., 1879. Die von Hr. W. Peters in Moçambique gesammelten Crustaceen. *Monatsberichte der Königlich Akademie der Wissenschaften zu Berlin, Physikalisch-mathematische Klasse* 1878: 782-851, 732 pls.
- Hoffmann, C.K., 1874. Crustacés et Echinodermes de Madagascar et de l'île de la Réunion. In: Pollen, F.P.L. et D.C. van Dam, Recherches sur la faune de Madagascar et de ses dépendances d'après les découvertes de François, 5(2): 1-58, pls 1-10.
- Holthuis, L.B., 1953. Enumeration of the Decapod and Stomatopod Crustacea from Pacific Coral Islands. *Atoll Research Bulletin*, 24: 1-66, 2 maps. Mimeogr.
- Jeng, M.-S., 1997. Studies on the land and aquatic decapod crustacean fauna of the Kenting National Park (II) Communities of decapod crustaceans around the sea. ii+66 pp. Ministry of the Interior, Taipei.
- Kensley, B., 1981. On the zoogeography of southern African decapod Crustacea, with a distributional checklist of the species. *Smithsonian Contribution to Zoology*, 338: 1-64, figs 1-4, tables 1-2.
- Klunzinger, C.B., 1913. Die Rundkrabben (Cyclometopa) des Roten Meeres. *Abhandlungen der kaiserlich Leop.-Carol. Deutschen Akademie der Naturforscher Halle*, 99(2): 97-402, figs 1-4, pls 5-11.
- Kossmann, R., 1877. Zoologische Ergebnisse einer Reise in die küstengebiete des Rothen Meeres. Malacostraca. 1. Theil: Brachyura. Leipzig, W. Engelmann: 1-66, pls 1-3.
- Lai, J. C., Mendoza, J. C. E., Guinot, D., Clark, P. F., and Ng, P. K. 2011. Xanthidae MacLeay, 1838 (Decapoda: Brachyura: Xanthoidea) systematics: a multi-gene approach with support from adult and zoeal morphology. *Zoologischer Anzeiger-A Journal of Comparative Zoology*, 250(4), 407-448.
- Lanchester, W.F., 1900. On a collection of Crustaceans made at Singapore and Malacca. Part I. Crustacea Brachyura. *Proceedings of the Zoological Society of London*, 48(1): 719-770, pls 44-47.
- Laurie, R.D., 1906. Report on the Brachyura collected by Professor Herdman, at Ceylon, in 1902. In: W.A. Herdman, Report to the Government of Ceylon on the Pearl Oyster Fisheries of the Gulf of Manaar with supplementary reports upon the Marine Biology of Ceylon by other Naturalists, part 5, suppl. Rep. 40: 349-432, figs 1-12, pls 1-2.
- Legall N., and J. Poupin, Internet - CRUSTA: Database of Crustacea (Decapoda and Stomatopoda), with special interest for those collected in French overseas territories. At <http://crustiesfroverseas.free.fr/>.
- Lin, C.C., 1949. A catalogue of Brachyurous Crustacea of Taiwan. *Quarterly Journal of the Taiwan Museum*, 2(1): 10-33.
- Man, J.G. de, 1880. On some podophthalmous Crustacea, presented to the Leyden Museum by Mr. J. A. Kruyt, collected in the Red Sea near the city of Djeddah. *Notes from the Leyden Museum*, 2(21): 171-185. [1880/VII]
- Man, J.G. de, 1881. On a new collection of podophthalmous Crustacea, presented by Mr. J. A. Kruyt, collected in the Red Sea near the town of Djeddah. *Notes from the Leyden Museum*, 3(25): 93-107.
- Man, J.G. de, 1887. Bericht über die von Herrn. Dr. J. Brock im indischen Archipel gesammelten Decapoden und Stomatopoden. *Archiv für Naturgeschichte*, Berlin, 53(1): 215-288, pls 7-10.
- Man, J.G. de, 1895. Bericht über die von Herrn Schiffscapitän Storm zu Atjeh, an den westlichen Küsten von Malakka, Borneo und Celebes sowie in der Java-See gesammelten Decapoden und Stomatopoden. (In 6 parts). *Zoologische Jahrbücher*, Abteilung für Systematik, Geographie und Biologie der Thiere. Vol. 8(Teil 1): 485-609, figs 1-15, pls 12-14. [1895/VIII]
- Man, J.G. de, 1902. Die von Herrn Professor Kükenthal im indischen Archipel gesammelten Dekapoden und Stomatopoden. In: W. Kükenthal, Ergebnisse einer zoologischen Forschungsreise in den Molukken und Borneo, in Aufträge der Senckenberg. Naturforsch. Gesellschaft ausgeführt von Dr. Willy Kükenthal. *Abhandlungen der Senckenbergischen naturforschenden Gesellschaft*, 25(3): 465-929, pls 19-27.
- Man, J.G. de, 1929a. Decapoda and Stomatopoda from Pulau Berhala. *Misc. Zool. Sumatra*, Medan, 36: 1-3.
- Man, J.G. de, 1929b. On a collection of Decapod and Stomatopod Crustacea from Pulau Berhala, an islet situated in the Straits of Malacca. *Bijdragen tot de Dierkunde*, 26: 1-26, pls 1-3.
- Martin, J.W., 1988. Phylogenetic significance of the brachyuran megalopa: evidence from the Xanthidae. *Symposia of the Zoological Society of London* 59: 69-102.
- McNeill, F.A., 1968. Crustacea, Decapoda and Stomatopoda. *Scientific Reports Great Barrier Reef Expedition 1928-29*, 7(1): 1-98, figs 1-2, pls 1-2.
- Michel, C., 1964. Checklist of the Crustacea Brachyura (Crabs) recorded from Mauritius. *Mauritius Institute Bulletin*, 6(1): 1-48.

- Miers, E.J., 1884. Crustacea (Brachyura). In: Report on the Zoological Collections made in the Indo-Pacific Ocean during the Voyage of H.M.S. *Alert* 1881-1882. Part I. The collections from Melanesia. Part II. The collections from the Western Indian Ocean. British Museum (Natural History), London, 8(2): 513-575, pls 46-52.
- Miers, E.J., 1886. Report on the Brachyura collected by H.M.S. *Challenger* during the years 1873-1876. In: C.W. Thompson & J. Murray, *Report on the Scientific Results of the exploring Voyage of H.M.S. Challenger during the years 1873-1876, under the command of Captain George S. Nares, R.N., F.R.S. and the Late Captain Frank Tourle Thomson, R.N.*, Zoology, 17(2): i-xli, 1-362, pls 1-29. Michel, C., 1964. Checklist of the Crustacea Brachyura (Crabs) recorded from Mauritius. *Mauritius Institute Bulletin*, 6(1): 1-48.
- Milne-Edwards, A., 1862. Faune carcinologique de l'île de la Réunion. In: L. Maillard, Notes sur l'île de la Réunion (Bourbon), Paris. Annexe F de l'ouvrage intitulé: F1-F16, pls 17-19.
- Milne-Edwards, A., 1865. Études zoologiques sur les Crustacés récents de la famille des Cancériens. Cancérides, Pirimélides, Carpilides, Première Partie. *Nouvelles Archives du Muséum national d'Histoire naturelle*, Paris, 1: 177-308, pls 11-19.
- Milne-Edwards, A., 1873. Recherches sur la faune carcinologique de la Nouvelle-Calédonie. Part II. Groupe des Cyclométopes Portuniens. *Nouvelles archives du Muséum national d'Histoire naturelle*, Paris, 9: 155-332, pls 4-18.
- Milne-Edwards, H., 1834. Histoire Naturelle des Crustacés, comprenant l'anatomie, la physiologie et la classification de ces animaux. Librairie Encyclopédique de Roret, Paris, Vol. 1: i-xxxv, 1-468, pls 3, 5-6, 15-17, 20, 22-23, 25.
- Miyake, S., 1938. Unrecorded crabs from Formosa collected by Prof. Hiroshi Ohshima in 1932. Transactions of the Natural History Society of Formosa, 28(177): 187-196, figs 1-4. (In Japanese)
- Miyake, S., 1983. Japanese Crustacean Decapods and Stomatopods in color. Vol. II. Brachyura (Crabs), i-viii, 1-277, pls 1-64. Hoikusha, Osaka. (In Japanese; second edition in 1992)
- Monod, T., 1938. Dacapoda Brachyura. In: Mission Robert Ph. Dollfus en Egypte. VIII. *Mem. Inst. Egypte*, 37: 91-162, fig. 1-29.
- Montgomery, S.K., 1931. Report on the Crustacea Brachyura of the Percy Sladen Trust expedition to the Abrolhos Islands under the leadership of Prof. W.J. Dakin in 1913, along with other crabs from Western Australia. *Journal of the Linnean Society of London (Zoology)* 37: 405-464, pls 424-430.
- Morgan, G. J. 1990. A collection of Thalassinidea, Anomura and Brachyura (Crustacea: Decapoda) from the Kimberley region of northwestern Australia. Nationaal Natuurhistorisch Museum.
- Muraoka, K., 1998. Catalogue of the Brachyuran and Anomuran Crabs donated by Prof. Dr. Tune Sakai to the Kanagawa Prefectural Museum. *Catalogue of the Collection in the Kanagawa Prefectural Museum of Natural History*, 11: 5-67, pls 1-16.
- NERP National Environment Research Program (2012). <http://www.nerpmarine.edu.au/rv-solander-blog>
- Ng, P.K., 1993. On a new genus and species of xanthid crab (Crustacea: Decapoda: Brachyura) from Chesterfield Island, Coral Sea. *Proceedings Biological Society of Washington* 106: 705-705.
- Ng, P.K., 2002. On a new species of cavernicolous Neoliomera (Crustacea: Decapoda: Brachyura: Xanthidae) from Christmas Island and Ryukyus, Japan. *Raffles Bulletin of Zoology* 50: 95-100.
- Ng, P.K.L., and Clark, P.F. 2003. Three new genera of Indo-West Pacific Xanthidae (Crustacea, Decapoda, Brachyura, Xanthoidea). *Zoosystema* 25: 131-147.
- Ng, P.K.L., Guinot, D., and Davie, P.J.F. 2008. Systema Brachyurorum; Part I. An annotated checklist of extant brachyuran crabs of the world. *Raffles Bulletin of Zoology* 17: 1-286.
- Nichol, S.L., Howard, F.J.F., Kool, J., Stowar, M., Bouchet, P., Radke, L., Siwabessy, J., Przeslawski, R., Picard, K., Alvarez de Glasby, B., Colquhoun, J., Letessier, T. & Heyward, A. 2013. *Oceanic Shoals Commonwealth Marine Reserve (Timor Sea) Biodiversity Survey: GA0339/SOL5650 – Post Survey Report*. Record 2013/38. Geoscience Australia: Canberra.
- Nobili, G., 1906a. Faune carcinologique de la Mer Rouge. Décapodes et stomatopodes. *Annales des Sciences Naturelles* 4: 1-347, pls 341-311.
- Nobili, M.G., 1906b. Faune carcinologique de la Mer Rouge. Décapodes et Stomatopodes. *Annales des Sciences naturelles, Zoologie*, (9) 4(1-3): 1-347, figs 1-12, pls 1-11.
- Odhner, T., 1925. Monographierte Gattungen der Krabben-familie Xanthidae. I. *Göteborgs Kungliga Vetenskaps- och Vitterhets-Samhälles Handlingar*, (4) 29(1): 1-92, figs 1-7, pls 1-5.
- Ortmann, A.E., 1893. Die Decapoden-Krebse des Strassburger Museums, mit besonderer Berücksichtigung der von Herrn Dr. Döderlein bei Japan und bei den Liu-Kiu-Inseln gesammelten und zur Zeit im Strassburger Museum aufbewahrten Formen. Theil VII. Abteilung Brachyura (Brachyura genuina Boas), II. Unterabteilung: Cancroidea, 2. Section: Cancrinea, 1. Gruppe: Cyclometopa. *Zoologische Jahrbücher*, Abtheilung für Systematik, Geographie und Biologie der Thiere, 7: 411-495, pl. 17.
- Ortmann, A.E., 1894. Die Decapoden-Krebse des Strassburger Museums, mit besonderer Berücksichtigung der von Herrn Dr. Döderlein bei Japan und bei den Liu-Kiu-Inseln gesammelten und zur Zeit im Strassburger Museum aufbewahrten Formen. VIII Thiel. Abtheilung: Brachyura (Brachyura Genuina Boas), III. Unterabtheilung: Cancroidea, 2. Section: Cancrinea, 2. Gruppe: Catametopa. *Zoologische Jahrbücher. Abteilung für Systematik, Geographie und Biologie der Thiere* 7(5): 683-772, Plate 23.
- Ortmann, A.E., 1894b. Decapoden. In: R. Semon (ed.), Zoologische Forschungsreisen in Australien und dem Malayischen Archipel ausgeführt in den Jahren 1891-93. V. *Denkschriften der medicinisch-naturwissenschaftlichen Gesellschaft*, Jena, 8: 1-80, pls 1-13.
- Poore, G.C.B., 2004. *Marine decapod Crustacea of southern Australia. A guide to identification (with chapter on Stomatopoda by Shane Ahyong)*. CSIRO Publishing: Melbourne. 574 pp.
- Poore, G., McCallum, A., and Taylor, J. 2008. Decapod Crustacea of the continental margin of southwestern and central Western Australia: preliminary identifications of 524 species from FRV *Southern Surveyor* voyage SS10-2005. *Museum Victoria Science Reports* 11: 1-106.
- Przeslawski, R., Alvarez de Glasby, B., Smit, N., Evans-Illidge, L., Dethmers, K. 2013. Benthic Biota of Northern Australia: SS2012t07 Post-survey Report. Record 2013/07. *Geoscience Australia*: Canberra.
- Rathbun, M.J., 1906. The Brachyura and Macrura of the Hawaiian Islands. *Bulletin of the United States Fish Commission*, 23(3): i-viii, 827-930, figs 1-79, pls 1-24.
- Rathbun, M.J., 1907. Reports on the Scientific Results of the Expedition to the Tropical Pacific, in charge of Alexander Agassiz, by the U.S. Fish Commission Steamer *Albatross*, from August, 1899 to March, 1900, Commander Jefferson F. Moser, U.S.N., commanding - IX. Reports on the scientific results of the expedition to the eastern tropical Pacific, in charge of Alexander Agassiz, by the U.S. Commission Steamer *Albatross* from October, 1904 to March, 1905, lieut.-commander L.M. Garrett, U.S.N., commanding - X. The Brachyura. *Memoirs of the Museum of Comparative Zoology at Harvard College*, 35(2): 23-74, pls 1-9.
- Rathbun, M.J., 1910. The Brachyura. In: The Danish Expedition to Siam, 1899-1900. V. *Kongelige Danske Videnskabernes Selskabs Skrifter*, Kjøbenhavn, (7) 5(4): 301-367, figs 1-44, pls 1-2, 1 map.

- Rathbun, M.J., 1911. Marine Brachyura. In: The Percy Sladen Trust Expedition to the Indian Ocean in 1905, under the Leadership of Mr J. Stanley Gardiner. Vol. III, part II, No. XI. *Transactions of the Linnean Society of London*, (Zool.), (2) 14(2): 191-261, figs 1-2, pls 15-20.
- Rathbun, M.J., 1923. Report on the crabs obtained by the F.I.S. "Endeavour" on the coasts of Queensland, New South Wales, Victoria, South Australia and Tasmania. Report on the Brachyrhyncha, Oxystomata and Dromiacea. *Biological Results of the Fishing Experiments carried out by the F.I.S. "Endeavour", 1909-14* 5: 95-156, pls 116-142.
- Rathbun, M. J. 1924. Results of Dr. E. Mjöberg's Swedish scientific expeditions to Australia 1910-1913. 37. Brachyura, Albuneidae and Porcellanidae. *Arkiv för Zoologi*, 16(23): 1-33.
- Ribes, S., 1978. La Macrofaune vagile associée à la partie vivante des Scéléactiniaires sur un récif frangeant de l'Île de la Réunion (océan Indien). Thèse de doctorat, Océanologie, Univ. Aix-Marseille II: 1-167, fig. 1-28.
- Richters, F., 1880. Decapoda. In: K. Möbius, Beiträge zur Meeresfauna der Insel Mauritius und der Seychellen, bearbeitet von K. Möbius, F. Richters und E. von Martens nach sammlungen, angelegt auf einer Reise nach Mauritius von K. Möbius, Berlin: 139-178, pls 15-18.
- Sakai, K., 1999. J.F.W. Herbst - collection of Decapod Crustacea of the Berlin Zoologica Museum, with remarks on certain species. *Naturalists*, Publications of Tokushima Biological Laboratory, Shikoku University, 6: 1-45, pls 1-21.
- Sakai, T., 1939. Studies on the crabs of Japan. IV. Brachygnatha, Brachyrhyncha, pp. 365-741, figs 1-129, pls 42-111, table 1. Yokendo Co., Tokyo.
- Sakai, T., 1965a. Notes from the Carcinological Fauna of Japan. (II). *Researches on Crustacea*, 2: 37-46, figs 1-2, pls 5-6, frontispieces 2-3. (In Japanese and English).
- Sakai, T., 1965b. The Crabs of Sagami Bay, collected by His Majesty the Emperor of Japan, i-xvi, 1-206 (English text), figs 1-27, pls 1-100: 1-92 (Japanese text): 1-26 (references and index in English): 27-32 (index in Japanese), 1 map. Maruzen Co., Tokyo.
- Sakai, T., 1976. Crabs of Japan and the Adjacent Seas. (In 3 volumes: (1) English text: i-xxix, 1-773, figs 1-379, (2) Plates volume: 1-16, pls 1-251, (3) Japanese text: 1-461, figs 1-2, 3 maps.) Kodansha Ltd, Tokyo.
- Sankarankutty, C., 1966. On Brachyura collected during cruise of U.S. Research Vessel *Anton Bruun*. *Journal of the zoological Society of India*, Calcutta, 16(1-2): 48-52, figs 1-2.
- Serène, R., and N.V. Luom, 1960. Les espèces de *Carpilodes* (Bachyura-Xanthidae) du Viet-Nam. *Annales de la Faculté des Sciences, Université de Saigon*, 1960: 173-187, figs 1-2, pls 1-2.
- Serène, R., 1968. The Brachyura of the Indo-West Pacific region. In: Prodrômus for a check list of the non-planctonic marine fauna of South East Asia. UNESCO Singapore National Academy of Sciences, Special publication No. 1, Fauna IIC3: 33-112.
- Serène, R., 1972. On the Brachyuran fauna of the Indo-Pacific coral reefs. *Proc Sym Corals Coral Reefs. Marine Biological Association of India, Cochin*: 419-425.
- Serène, R., 1977. Crustacés hippidés et brachyours des îles Séchelles (1ère partie). *Revue de Zoologie Africaine*, Tervuren, 91(1): 45-68, figs 1-38.
- Serène, R., 1984. Crustacés Décapodes Brachyours de l'Océan Indien occidental et de la Mer Rouge, Xanthoidea: Xanthidae et Trapeziidae. Avec un addendum par Crosnier (A): Carpiliidae et Menippidae. Faune Tropicale, no. XXIV: 1-349, figs A-C + 1-243, pls 1-48. (Translated into English by R.W. Ingle).
- Targioni Tozzetti, A., 1877. Crostacei Brachyuri e Anomuri. In: Zoologia del viaggio intorno al Globo della R. Pirocorvetta *Magenta* durante gli anni 1865-1868. *Pubblicazioni del R. Istituto di Studi superiore pratici e di Perfezionamento in Firenze. Sezione di Scienze fisiche e naturali*, 1: i-xxix, 1-257, pls 1-12.
- Thoma, B. P., Guinot, D., and Felder, D. L. 2014. Evolutionary relationships among American mud crabs (Crustacea: Decapoda: Brachyura: Xanthoidea) inferred from nuclear and mitochondrial markers, with comments on adult morphology. *Zoological Journal of the Linnean Society*, 170(1), 86-109.
- Tweedie, M.W.F., 1950. The fauna of the Cocos-Keeling Islands. Brachyura and Stomatopoda. Bulletin of the Raffles Museum, Singapore, 22: 105-148, figs 1-4, pls 16-17.
- Ward, M., 1933a. The true crabs of the Capricorn Group, Queensland. *Australian Zoologist* 7: 237-255.
- Ward, M., 1933b. New genera and species of marine Decapoda Brachyura from the coasts of New South Wales and Queensland. *Australian Zoologist* 7: 377-394, pls 321-323.
- Ward, M., 1934. Notes on a collection of crabs from Christmas Island, Indian Ocean. *Bulletin of the Raffles Museum* 9: 5-28.
- Ward, M., 1936. Crustacea Brachyura from the coasts of Queensland. *Memoirs of the Queensland Museum* 11: 1-3.
- Ward, M., 1942. Notes on the Crustacea of the Desjardins Museum, Mauritius Institute, with descriptions of new genera and species. *Bulletin of the Mauritius Institute*, Port Louis, 2(2): 49-113, pls 5-6.
- White, A., 1848. Short Descriptions of new or little-known Decapod Crustacea. *Proceedings of the Zoological Society of London*, 15(pt. 15, no.79) (1847): 222-228, 2 figs.
- White, A., 1847. Short descriptions of some new species of Crustacea in the collection of the British Museum. *Annals and Magazine of Natural History* 20: 205-207.
- Whitelegge, T., 1897. The Crustacea of Funafuti. In: The Atoll of Funafuti, Ellice Group: its Zoology, Botany, Ethnology, and General Structure based on Collections made by Mr. Charles Hedley, of the Australian Museum, Sydney, N.S.W. *Australian Museum Memoirs*, 3(2): 125-151, pls 6-7.
- Yokoya, Y., 1933. On the Distribution of Decapod Crustaceans inhabiting the Continental Shelf around Japan, chiefly based upon the Materials collected by S.S. Sôyô-Marû, during the years 1923-1930. *Journal of the College of Agriculture, Tokyo Imperial University*, 12(1): 1-226, figs 1-71, tables 1-4.
- Yu, H.-P., M.-S. Jeng, T.-Y. Chan, P.-H. Ho & J.-Y. Shy, 1996. Studies on the land and aquatic decapod crustacean fauna of the Kenting National Park. ii+79 pp. Ministry of the Interior, Taipei. (in Chinese with English abstract)