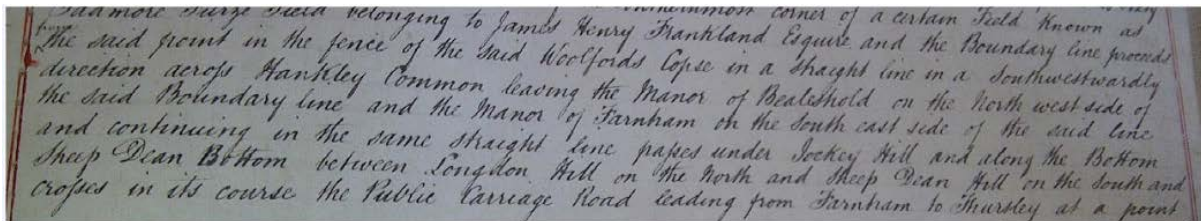


Extracts from the Elstead Inclosure Award and map of 1857 – ANNEX C

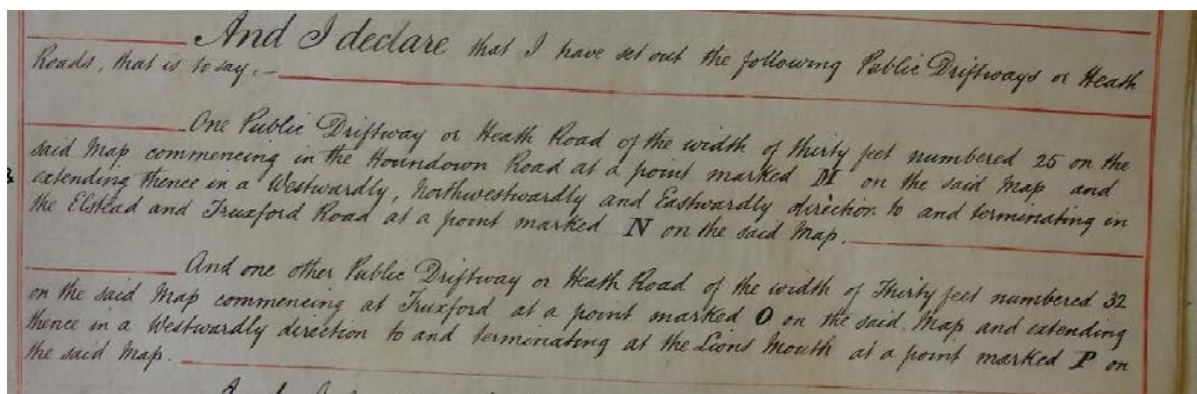
Extract regarding boundaries

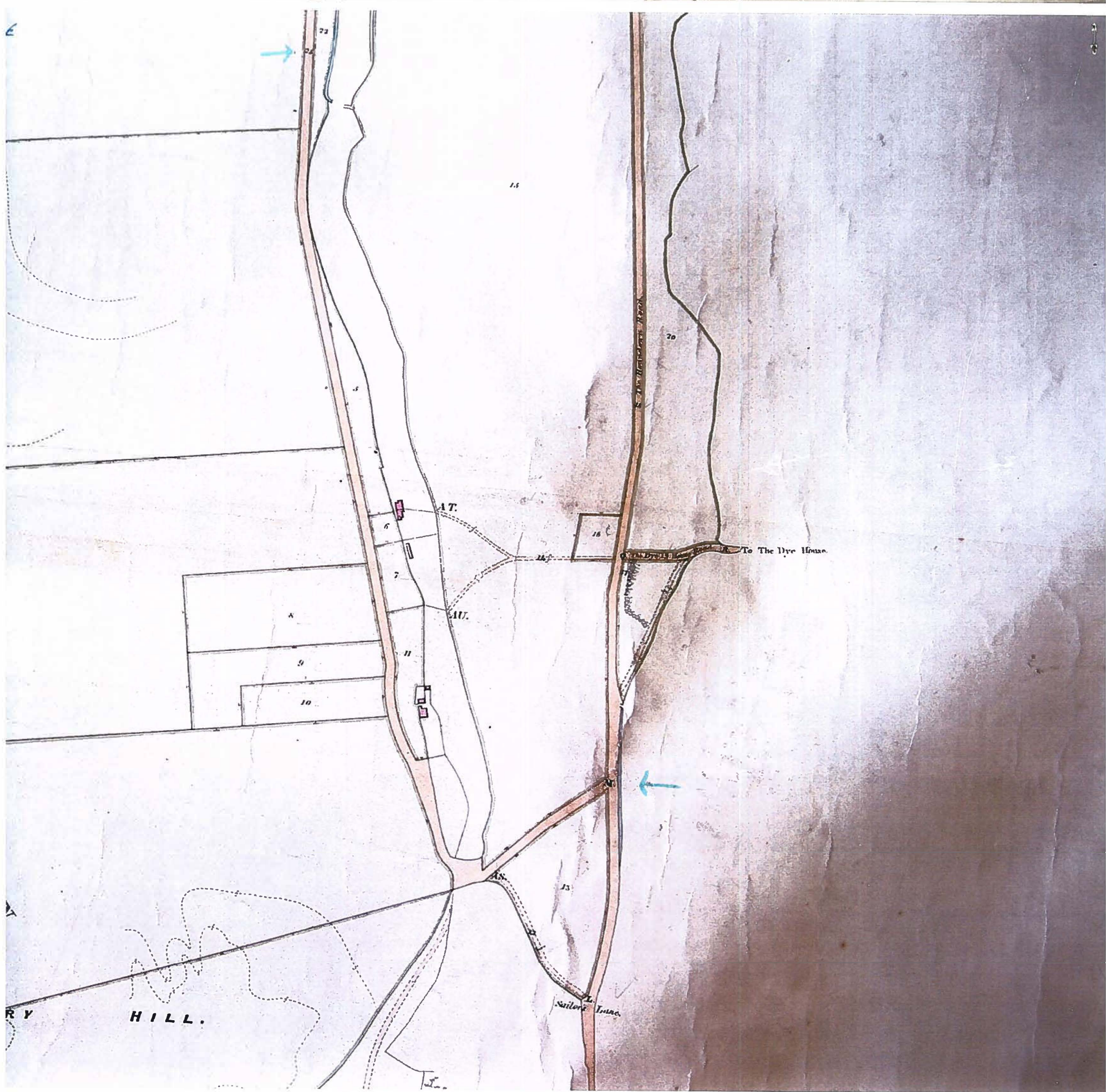
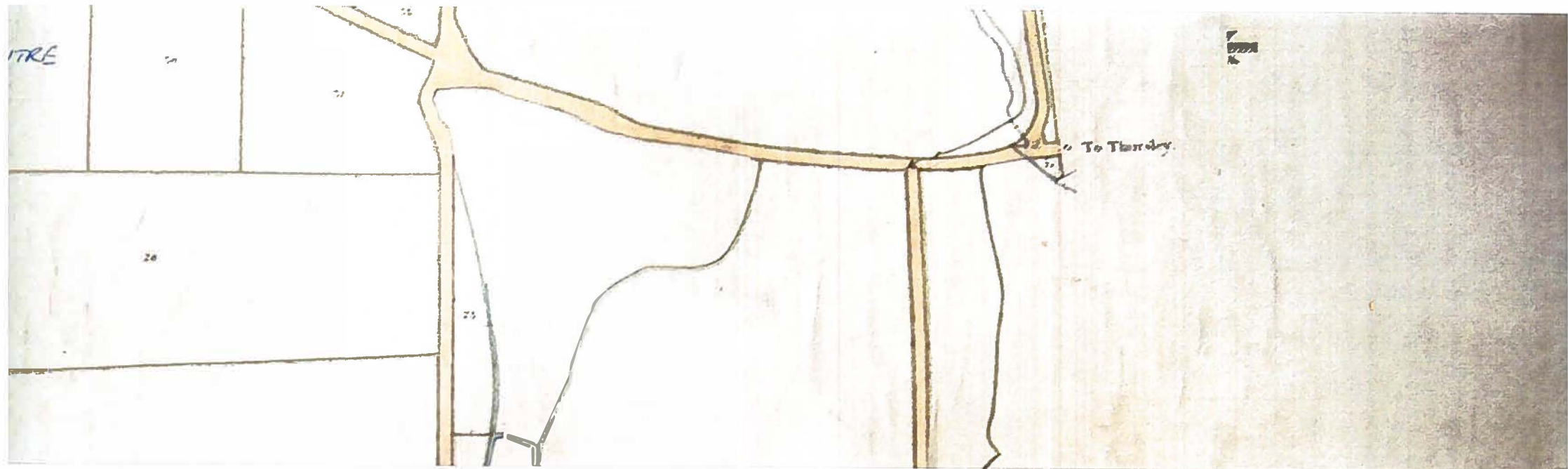


Transcription

“...and the Boundary line proceeds from the said point in the fence of the said Woolfords Copse in a straight line in a Southwestwardly direction across Hankley Common leaving the Manor of Bealeshold on the north west side of the said Boundary line and the Manor of Farnham on the south east side of the said line and continuing in the same straight line passes under Jockey Hill and along the Bottom Sheep Dean Bottom between Longdon Hill on the north and Sheep Dean Hill in the south and crosses in its course the Public Carriage Road leading from Farnham to Thursley at a point marked B on the said maps respectively and thence still continuing south westwardly in the same straight direction the said Boundary line proceeds up the said Sheep Dean Bottom to a point where a new Boundary post is now fixed in the Ground and marked C on the said maps respectively” “... the whole of which said line of Boundary is coloured Vermillion on the said Award Map and Red on the Map hereto annexed.”

Extract regarding ‘driftways’. See para. 2.3-2.4 for transcripton





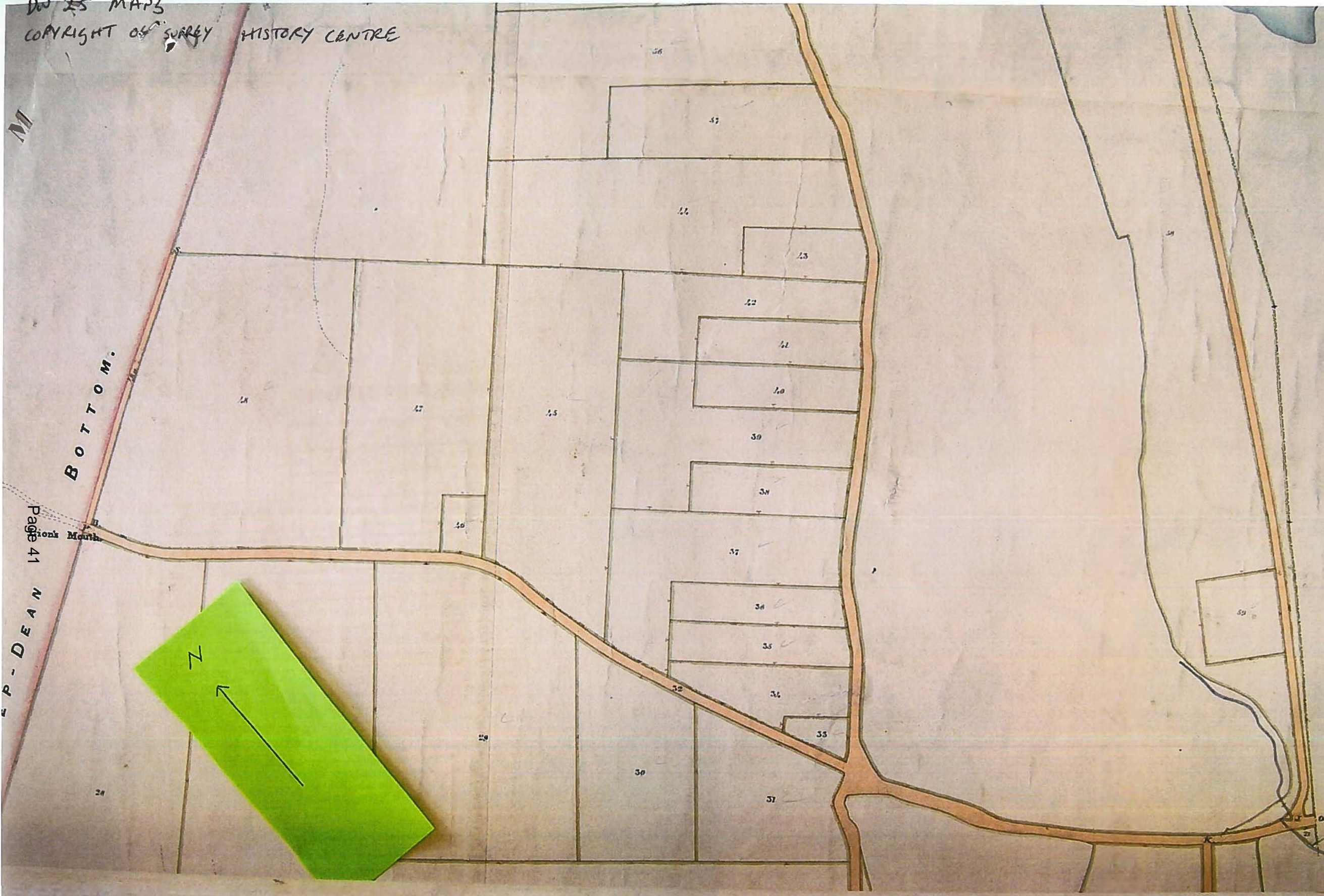
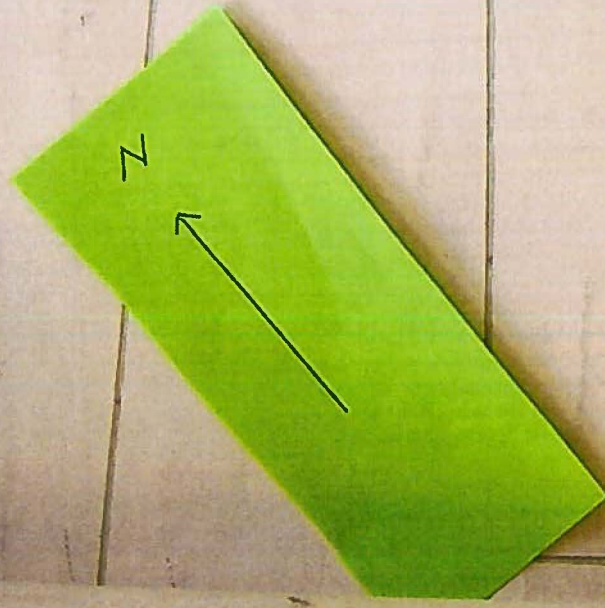
M

BOTTOM.

Page 41
P - DEAN

U
R
T

To Thursley.



This page is intentionally left blank