

Wednesday Walk at Pudman Creek, Boorowa Shire – 15 October 2008

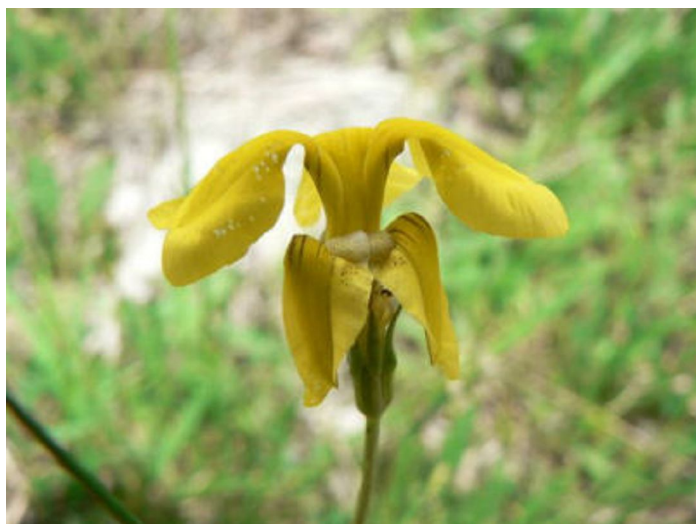
At the request of Greening Australia, we walked a section of Pudman Creek to identify native species. The results will be used to aid regeneration work along the Creek. Close to the creek were many weeds but in the rocky outcrops were some interesting native species and there were some good areas of native grassland. *Indigofera adesmiifolia* was flowering well among the rocks. Many of the *Austrodanthonia* species were beginning to flower and other grassland plants included *Convolvulus erubescens*, *Goodenia bellidifolia* and *Leptorhynchos squamatus*.



Surveying along Pudman Creek Image by Roger Farrow



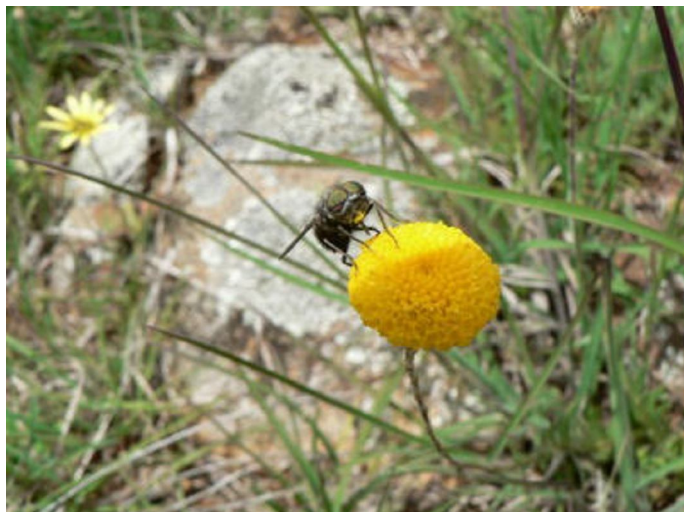
Triglochin procera Image by Roger Farrow



Goodenia bellidifolia Image by Roger Farrow



Indigofera adesmiifolia Image by Roger Farrow



Leptorhynchos squamatus Image by Roger Farrow



Chequered Copper *Lucia limbaria* Image by Roger Farrow

Plant List for Pudman Creek, Boorowa Shire – 15 October 2008

? indicates that those present were unsure of the plant name

Acacia dealbata	Microlaena stipoides
Acacia implexa	Oxalis sp.
Adiantum aethiopicum	Panicum effusum
Aristida behriana	Persicaria prostrata
Arthropodium minus	Phragmites australis
Asperula conferta	Pleurosorus rutifolius
Austrodanthonia	Poa labillardieri
Austrodanthonia auriculata	Rumex brownii
Austrodanthonia caespitosa	Scutellaria humilis
Austrodanthonia carphoides	Solenogyne dominii
Austrodanthonia setacea	Themeda triandra
Austrodanthonia tenuior	Tricoryne elatior
Austrostipa densiflora	Triglochin procera
Austrostipa scabra ssp. falcata	Triptilodiscus pygmaeus
Bothriochloa macra	Typha sp.
Brachychiton populneus	Wahlenbergia ? communis
Callistemon sieberi	Wahlenbergia luteola
Carex appressa	Wurmbea dioica
Carex inversa	
Cheilanthes austrotenuifolia	
Cheilanthes distans	
Cheilanthes sieberi	
Convolvulus erubescens	
Crassula sieberi	
Cryptandra amara var. floribunda	
Cymbopogon refractus	
Dianella longifolia	
Dianella revoluta	
Dichondra repens	
Dodonaea viscosa	
Einadia nutans	
Eleocharis sp.	
Elymus scaber	
Enneapogon nigricans	
Erodium crinitum	
Eucalyptus ? microcarpa	
Eucalyptus blakelyi	
Eucalyptus bridgesiana	
Eucalyptus camaldulensis	
Eucalyptus melliodora	
Geranium retrorsum	
Glycine tabacina	
Goodenia pinnatifida	
Indigofera adesmiifolia	
Isoetopsis graminifolia	
Leptorhynchus squamatus	
Lomandra filiformis ssp. ? coriacea	
Lomandra filiformis ssp. filiformis	
Lomandra longifolia	
Lomandra multiflora	
Lythrum hyssopifolia	