

# GUIDE TO THE GENERA OF LIANAS AND CLIMBING PLANTS IN THE NEOTROPICS

## CUCURBITACEAE

By Hanno Schaefer & Pedro Acevedo-Rodríguez (June 2021)



Young fruits of *Gurania lobata* (L.) Pruski,  
photo by P. Acevedo

A Pantropical family which originated in Asia in the Late Cretaceous (Schaefer et al. 2009). Cucurbitaceae currently comprises 95 genera and about 1,000 species of lianas or herbaceous annual vines and trailers (very rarely shrubs or trees). Of these, 30 genera and about 450 species are native to the New World, an additional 11 Old World genera have been introduced, some of which have become naturalized or invasive. In diverse habitats, some common in moist or wet lowland forests, 0-2500 (-3700) m elevation. Recent molecular studies place Cucurbitaceae in a polytomy with Begoniaceae, Datisceae, and Tetramelaceae (Schaefer & Renner 2011), with which they share inferior ovaries and parietal placentation.

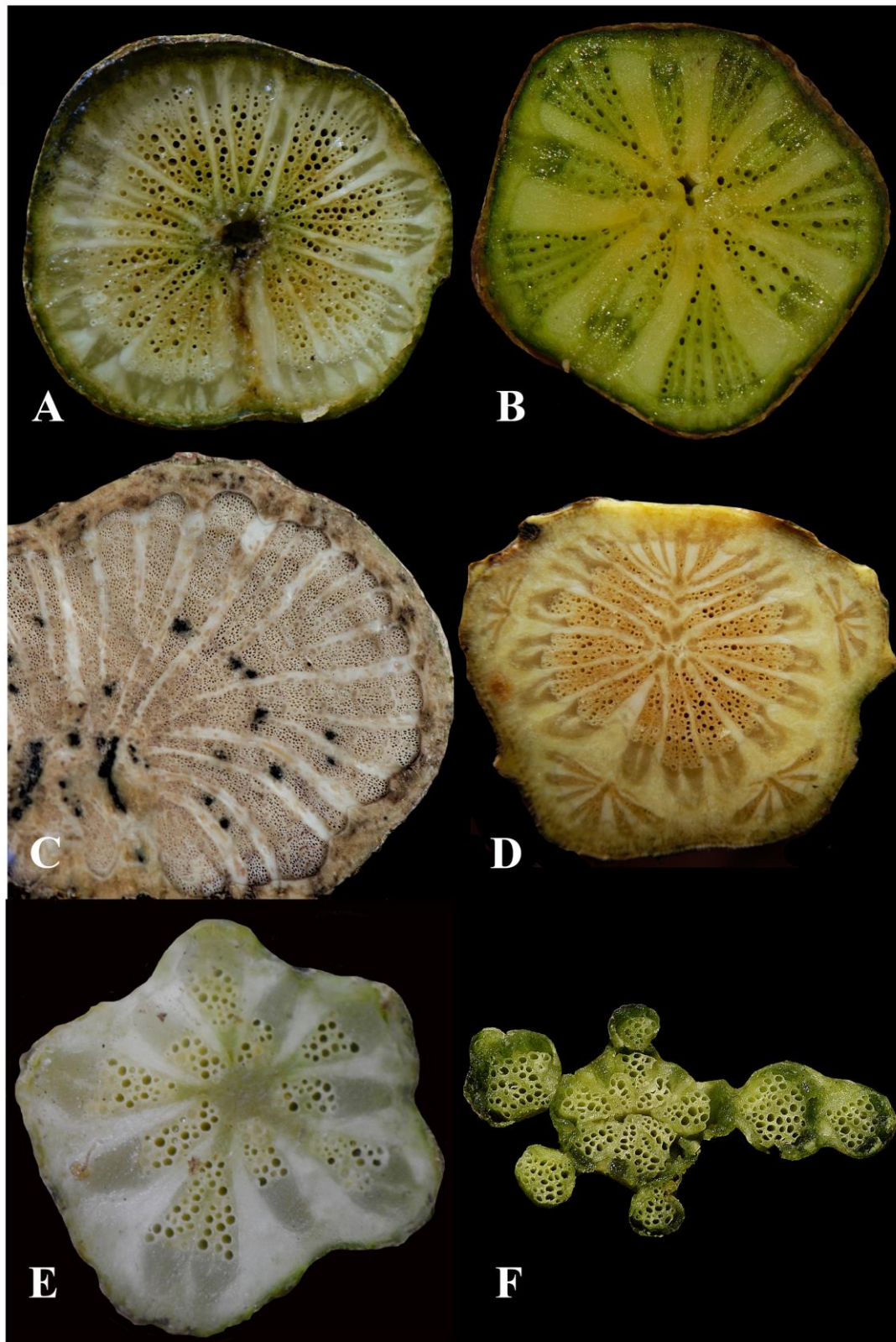
**Diagnostics:** Cucurbitaceae are mostly perennial lianas or herbaceous annual vines or trailers, often glandular-hairy and usually with one tendril per node inserted at a 90° angle with the petiole (fig. 5a & b). Perennial species often have tuberous roots or pachypodia (fig. 3d). Most Cucurbitaceae contain oxygenated tetracyclic triterpenoids (cucurbitacins) with bitter

taste and purging or abortive effect. Often confused with Passifloraceae or Vitaceae, because they share occurrence of alternate leaves and tendrils, but differentiated by the tendrils inserted at a 90° angle with the petiole, while in Passifloraceae these are axillary, and in Vitaceae they are opposite to the leaves.

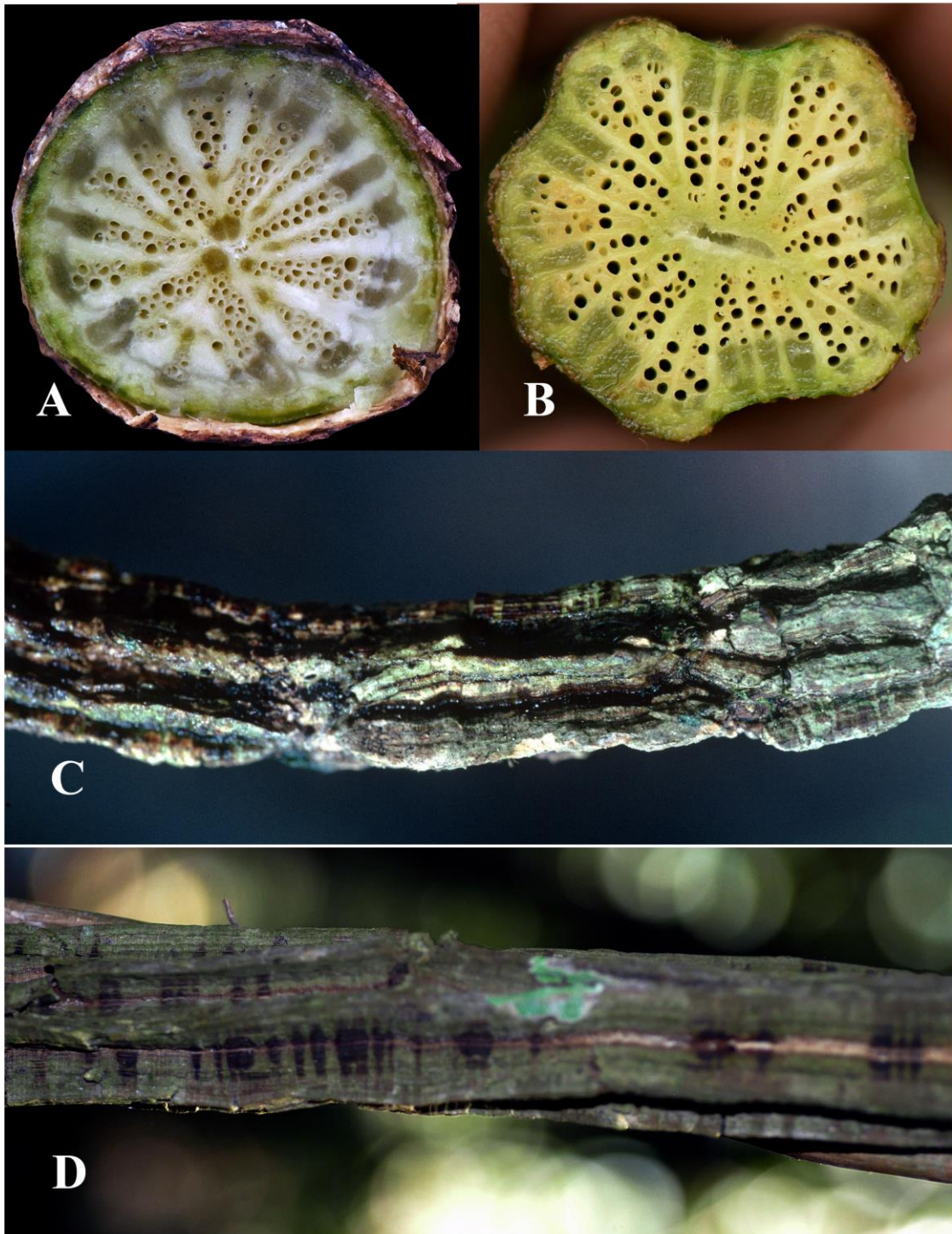
### General characters

1. STEMS. Woody, fleshy or herbaceous, glabrous or variously pubescent, flexible or less often slightly rigid, angulate, terete, lobed, sometimes slightly flattened or furrowed (fig. 1f; 2d; 3a). Bark smooth and thin, corky or rough (fig. 2c; 3a). Cross sections of mature stems with axial vascular elements divided in *radial segments* by broad strips of ground tissue (fig. 1a-e; 2a-b), some species with *neoformed* vascular cylinders (fig. 1d), and *Fevillea cordifolia* has *phloem wedges* with discontinuous cambium (fig. 2b).
2. EXUDATES. Plenty of watery and sometimes mucilaginous exudate is produced upon injury (fig. 3b & c). The sap is usually bitter due to poisonous Cucurbitacins.
3. CLIMBING MECHANISMS. One *tendrill* (modified shoots) per node inserted at a 90° angle with the petiole (fig. 5), these simple or branched (fig. 1a-c), uncoiled below the branching point (fig. 5a & c) or less often coiling above and below the branching point, i.e., zanonoid (e.g., *Siolmatra*, fig. 5b). In very few species (*Melothria campestre*, cultivars of *Cucurbita pepo*) the tendrill is absent.
4. LEAVES. Alternate, spiraled, membranaceous or succulent, mostly simple and entire or serrate (teeth sometimes glandular secretory), less often palmately or pedately lobed, or palmati- or pedati-compound, often glandular-hairy or hispid (fig. 4a-g); petioles often as long as the blade and sometimes with a pair of glands above the distal half (fig. 4b, c & e).
5. STIPULES AND STIPELS. Absent.
6. INFLORESCENCES. Racemes, thyrses, panicles, or fascicles, rarely spikes, umbels or capitulae, mostly axillary, hanging or ascending (fig. 6a-d), sometimes cauliflorous (fig. 7c), flowers sometimes solitary (fig. 7a, b).
7. FLOWERS. Unisexual (plants dioecious or monoecious), actinomorphic, (3-)5 (6)-merous; the base of the calyx and the corolla forming a campanulate, crateriform or tubular receptacle tube or hypanthium with minute or small sepals, this receptacle tube sits above the ovary in pistillate flowers; corolla gamopetalous, tubular, campanulate or rotate with short to long lobes, or petals free to the base, which are entire, bilobed or fringed, white, yellow, orange, red or pink; stamens 3-5 alternipetalous, inserted at the base of calyx, filaments free or often joint or connate in two pairs, sometimes connate into a central column or head, anthers are mostly basifixed, longitudinally dehiscent; gynoecium

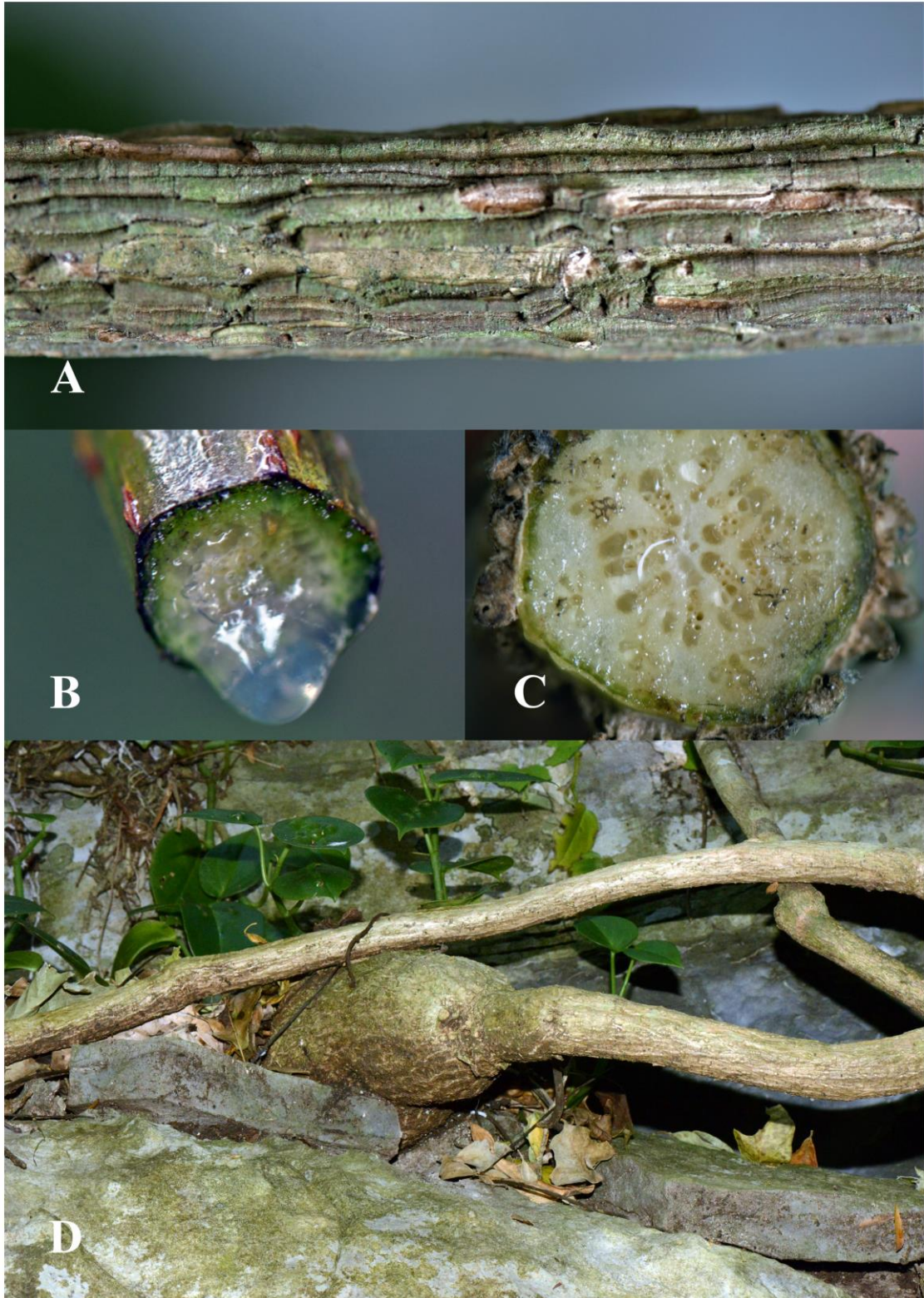
of (1-) 3(-5) inferior carpels with parietal placentation (fig. 8a) with 1 to many ovules, the style 1-3, simple, short or long, the stigma entire, lobulate, or divided.



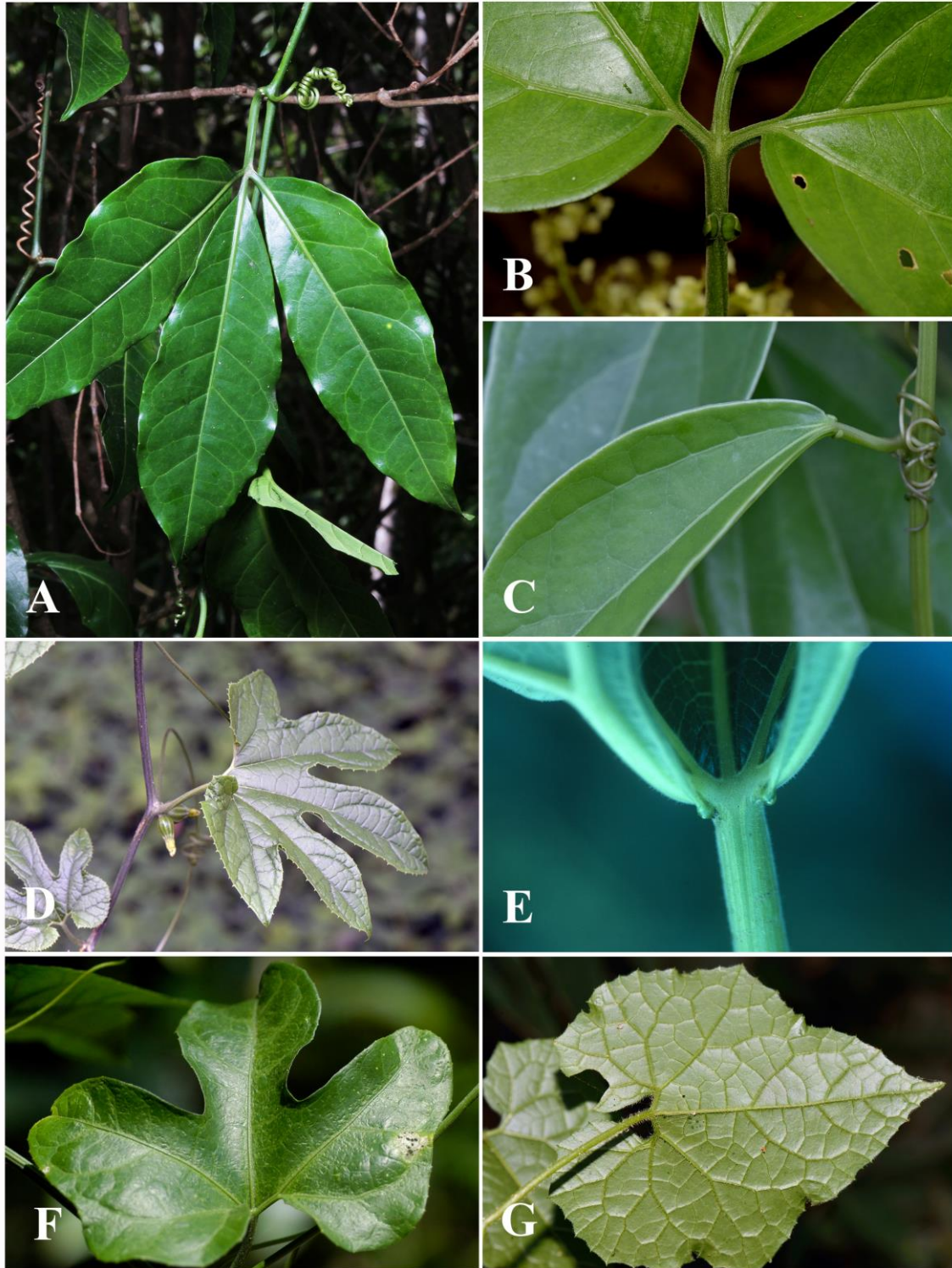
**Figure 1.** Stem cross sections in climbing Cucurbitaceae with axial vascular elements divided in radial segments. **A.** *Cayaponia* sp. **B.** *Coccinia grandis*. **C.** Indet. Cucurbitaceae. **D.** *Cayaponia* sp. **E.** *Hanburia mexicana* (15967). **F.** *Momordica charantia*, stems with neoformations of vascular cylinders. Photos by P. Acevedo.



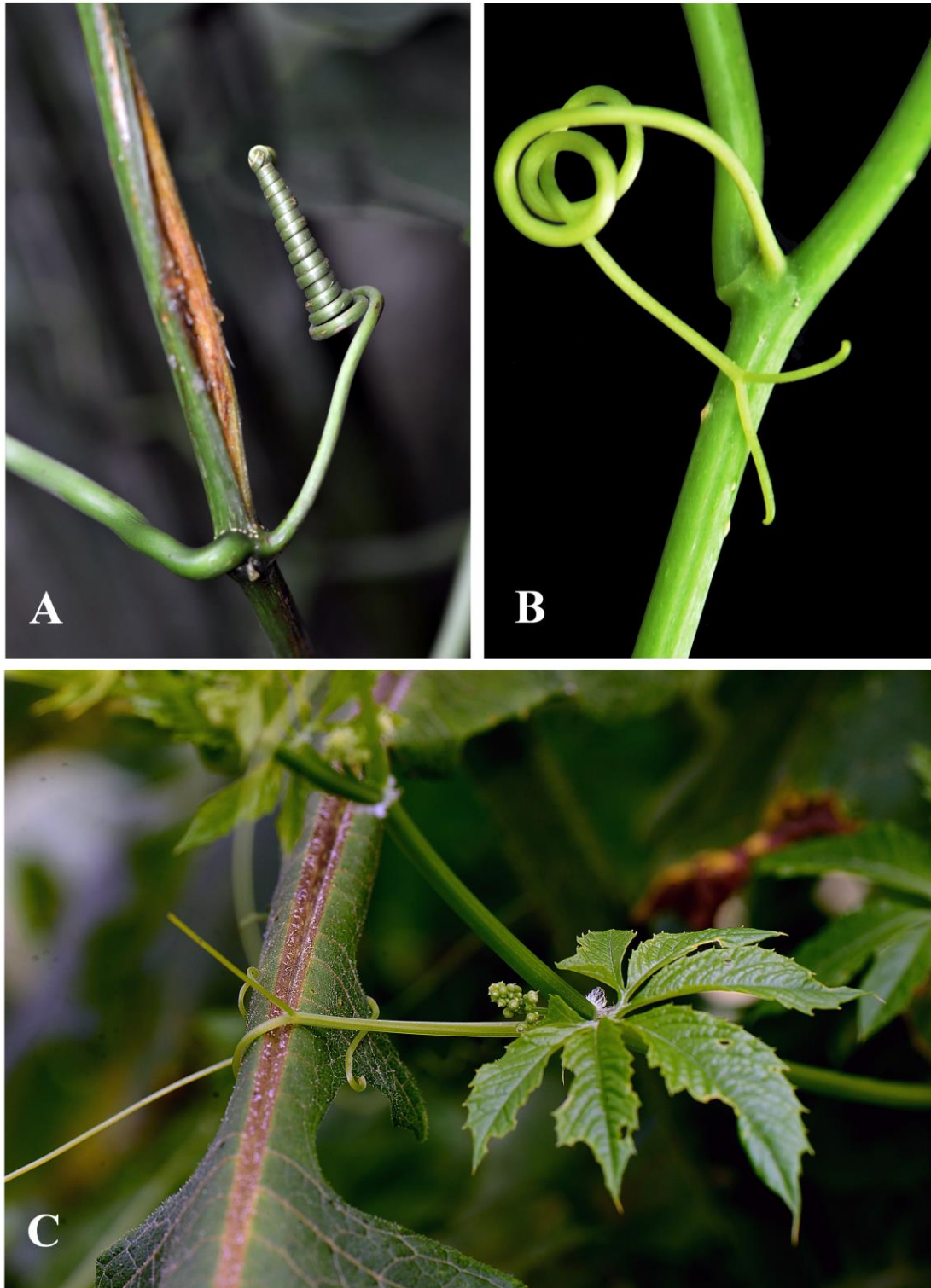
**Figure 2.** Stems in climbing Cucurbitaceae. **A.** *Psiguria* sp., with wide multiseriate rays. **B.** *Fevillea cordifolia*, with phloem wedges. **C.** *Psiguria pedata*, with corky bark. **D.** *Gurania* sp., with furrowed stems. Photos by P. Acevedo.



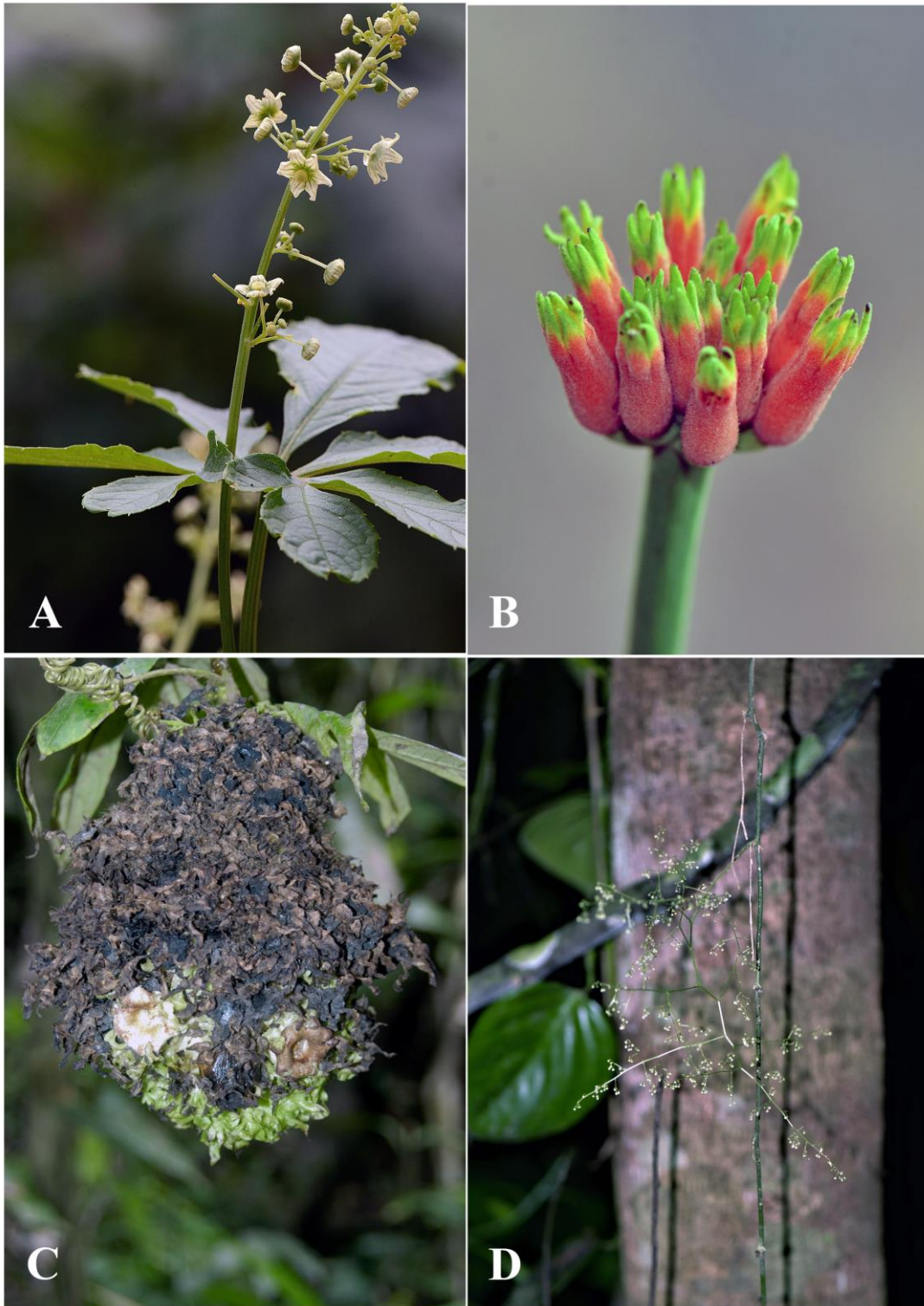
**Figure 3.** Stems in climbing Cucurbitaceae. **A.** Indet. species with rough bark. **B.** Indet species, with mucilaginous exudate. **C.** Indet. species, with clear exudate. **D.** Indet. species, with tuberous structure at the base of stem. Photos by P. Acevedo.



**Figure 4.** Leaves in climbing Cucurbitaceae. **A.** *Psiguria pedata* with trifoliolate leaves. **B.** *Fevillea pedatifolia*, with trifoliolate leaves. **C.** *Anisosperma passiflora*, leaves simple. **D.** *Wilbrandia* sp. leaves 5-lobed. **E.** *Lagenaria siceraria* leaves with prominent glands at the junction with petiole. **F.** *Gurania* sp. with trilobed leaves. **G.** *Melothria sphaerocarpa*, leaves lobed, dentate. Photos by A: Jonathan Amith; B-G: P. Acevedo.

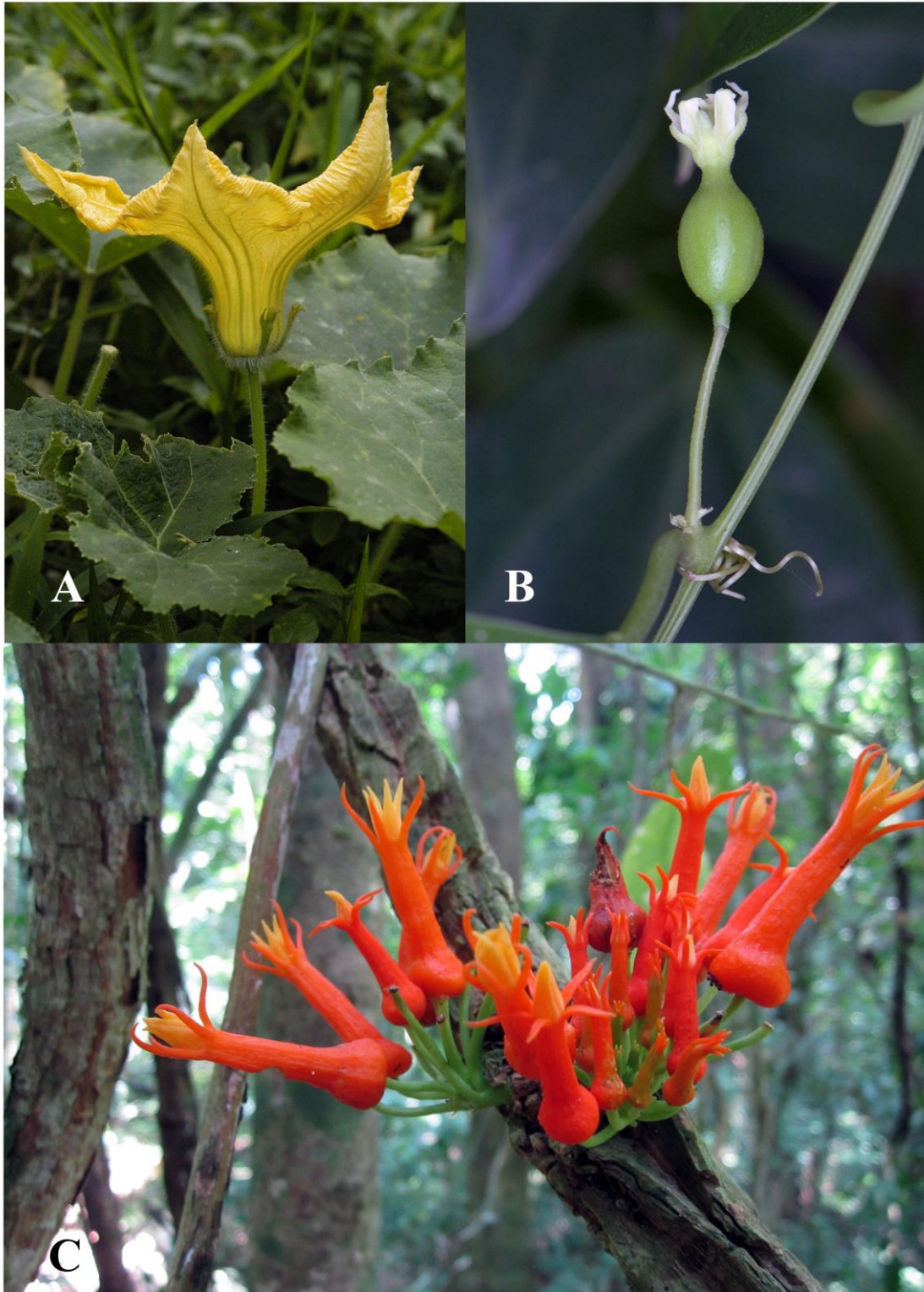


**Figure 5.** Tendrils in Cucurbitaceae. **A.** Indet Cucurbitaceae, showing simple, coiled tendrils. **B.** *Siolmatra* sp. with bifid zanonoid tendril (coiling below branching point). **C.** *Cyclanthera langaei*, with multifid tendrils uncoiled below branching point. Photos by P. Acevedo.

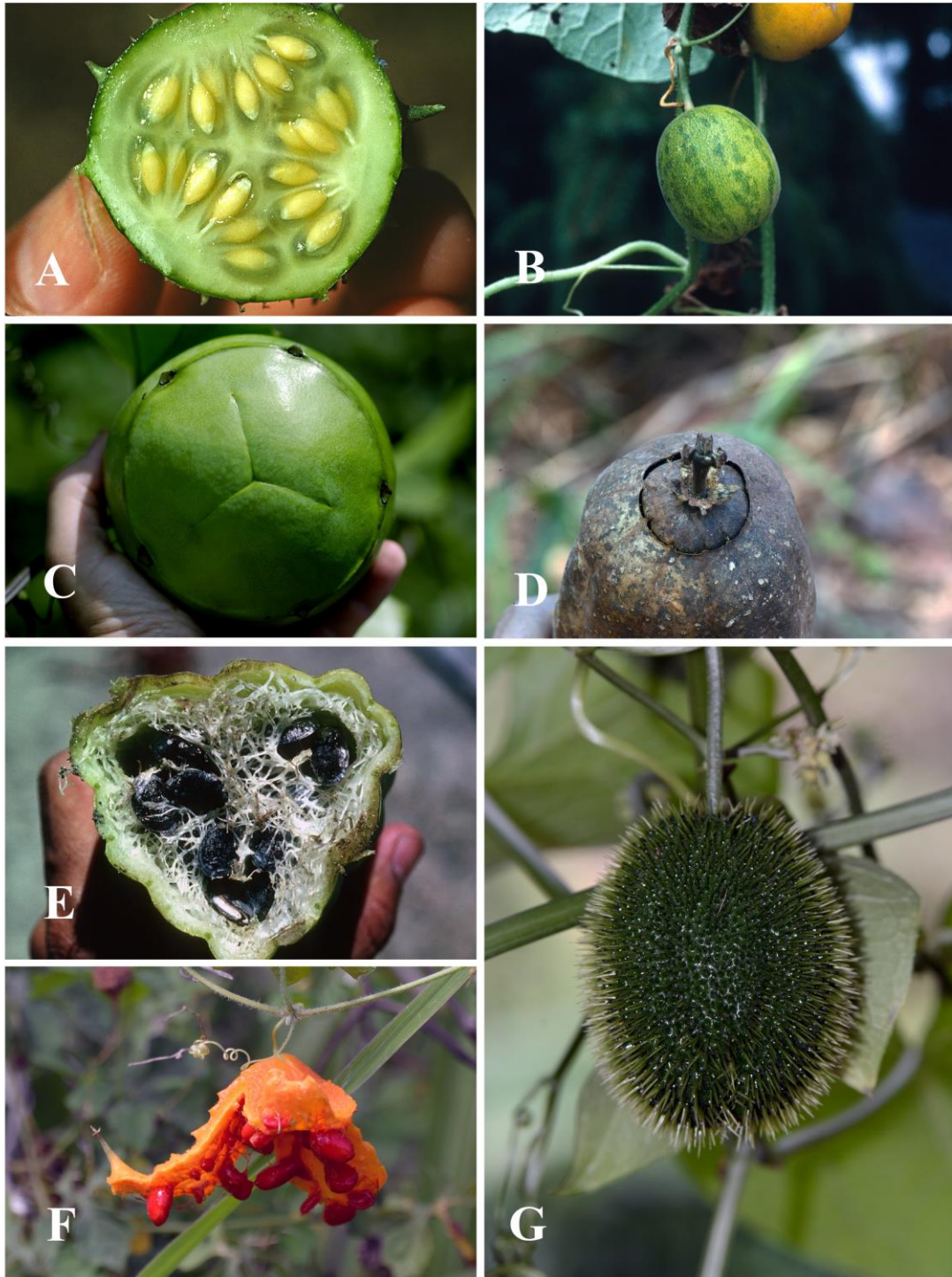


**Figure 6.** Inflorescences in climbing Cucurbitaceae. **A.** *Cyclanthera langaei*, erect, racemiform thyse. **B.** *Gurania lobata*, erect capitulate inflorescence. **C.** *Cayaponia ophtalmica*, hanging capitulate inflorescence. **D.** *Sicydium* sp. with long hanging, paniculate inflorescences. Photos by P. Acevedo.





**Figure 7.** Inflorescences in climbing Cucurbitaceae. **A.** *Cucurbita moschata*, erect solitary male flower. **B.** *Anisosperma passiflora*, erect solitary female flower. **C.** *Gurania* sp., with umbellate, cauliflorous male inflorescence. Photos by P. Acevedo.



**Figure 8.** Fruits in climbing Cucurbitaceae. **A.** *Cucumis anguria*, indehiscent, fleshy pepo. **B.** *Cucurbita okechobeensis*, indehiscent fleshy pepo (16082). **C.** *Fevillea cordifolia*, dehiscent along a large circular calyx scar (zonate) (14269). **D.** *Luffa aegyptiaca*, operculate capsule. **E.** *Luffa aegyptiaca*, with fibrous mesocarp. **F.** *Momordica charantia*, dehiscent capsule, seeds arillate. **G.** *Sicyos edulis*, indehiscent echinate pepo. Photos by P. Acevedo.

8. FRUITS. Soft- or hard-shelled berry (a pepo), smooth, warty or echinate (fig. 8b, c & f), less often a valvate or operculate capsule (fig. 8c & d), rarely samaras or achenes; many-seeded or rarely one-seeded (e.g., *Sicydium*, *Sicyos*, *Frantzia*).
9. SEEDS. Smooth, tuberculate, scrobiculate, sometimes with spongy outgrowth (*Apodanthera*) or hairs (e.g., species of *Melothria* and *Tecunumania*), usually flattened, those of fleshy fruits may be globose, ovoid, falcate, compressed (most genera), or even winged (*Siolmatra*), usually surrounded by an arilloid jacket (fig. 8e) derived from the closest carpellary tissue around the ovule.

## USES

Numerous species of Cucurbitaceae have economic importance, usually as vegetables or fruits (e.g., cucumber, melon, bottle gourd, watermelon, pumpkin and zucchini), as a source of oils (e.g., *Fevillea*) or fibers (e.g., *Luffa*). The following genera have been introduced to the New World as crops: *Benincasa*, *Citrullus*, *Coccinia*, *Cucumis*, *Lagenaria*, *Luffa* (1 species introduced, 3 native), *Momordica*, and *Trichosanthes*, some of which have become naturalized in the Neotropics.

## KEY TO THE GENERA

1. Tendrils apically bifid, coiling above and below the branching point (zanonioid)..... 2
1. Tendrils simple or bi- to multifid but coiling above branching point only..... 7
2. Petioles with callus ring at base; fruit a nodding truncate capsule containing 3-6 prominently winged seeds .....*Siolmatra*
2. Petioles without callus ring at base..... 3
3. Leaves compound (3-palmate or 5-pedate), with paired glands at the distal end of the petiole; fruit a subglobose pepo with c. 12 large, flattened seeds with a very narrow wing-like margin..... *Fevillea pedatifolia*
3. Leaves simple, entire to deeply lobed..... 4

4.	Fruit a winged samara or berry with a single seed .....	5
4.	Fruit a dry capsule or pepo with many seeds .....	6
5.	Fruit a large, fibrous samara with continuous, encircling wing or small, compressed, membranaceous, with two lateral wings .....	<b><i>Pteropepon</i></b>
5.	Fruit a fleshy, globose berry or achene, dark purple-black or black when ripe, 1-1.5 cm across .....	<b><i>Sicydium</i></b>
6.	Leaves entire, narrowly ovate; fruit ovoid to oblong, not zonate, short apiculate at apex .....	<b><i>Anisosperma</i></b>
6.	Leaves entire to ± deeply lobed or broadly cordate; fruit subglobose, zonate above the middle, rounded at apex .....	<b><i>Fevillea</i></b>
7.	Tendrils simple, rarely a few bifid (check several tendrils) .....	8
7.	Tendrils bi- to multifid .....	34
8.	Tendrils with thickened base that persists as conical spur-like structure .....	9
8.	Tendril base not persisting as conical structure .....	10
9.	Receptacle tube 1-2 mm long .....	<b><i>Doyerea</i></b>
9.	Receptacle tube 3-9 mm long .....	<b><i>Apodanthera</i></b> (sect. <i>Pseudoapodanthera</i> )
10.	Receptacle tube bright orange to red or yellow (yellowish green), longer than corolla .....	<b><i>Gurania</i></b>
10.	Receptacle tube green, usually much shorter than corolla .....	11
11.	Corolla lobes (petals) fimbriate, or distinctly bifid at apex with coiled lobes .....	12
11.	Corolla lobes (petals) entire or slightly bifid at apex without coiled lobes .....	13
12.	Corolla lobes long-fimbriate along margins; endemic to Hispaniola (compare also the cultivated <i>Trichosanthes cucumerina</i> ) .....	<b><i>Linnaeosicyos</i></b>
12.	Corolla lobes bifid on distal half, lobes coiled .....	<b><i>Ceratosanthes</i></b>
13.	Corolla red, orange or pink .....	<b><i>Psiguria</i></b>
13.	Corolla white, cream, yellow or greenish .....	14
14.	Fruit opening explosively, by operculum or splitting .....	15
14.	Fruit indehiscent .....	17

15. Fruit operculate, usually long-spiny .....	<i>Echinopepon</i>
15. Fruit opening explosively or by splitting, spiny, warty or smooth.....	16
16. Fruit splitting into three valves, exposing seeds in scarlet red pulp .....	<i>Momordica</i>
16. Fruit opening explosively, exposing seeds in white tissue .....	<i>Cyclanthera</i>
17. One seed per fruit.....	18
17. Seeds several to many .....	20
18. Fruit a large, fibrous samara with continuous, encircling wing or small, compressed, membranaceous .....	<i>Pteropepon</i>
18. Fruit unwinged or (in some species of <i>Sicyos</i> ) winged but not laterally compressed .....	19
19. Fruit a fleshy globose berry or achene, glabrous, dark purple-black or black when ripe .....	<i>Sicydium</i>
19. Fruit dry or fleshy, globose, ovoid, obovoid, pear-shaped, fusiform, winged, or 3-4-angled, glabrous or villous, sometimes armed with retrorse barbs, green or brown when ripe .....	<i>Sicyos</i>
20. Annual herbs with thin roots; flowers yellow.....	21
20. Perennial plants, often with thick woody rootstock and trunk-like base; flowers yellow, white or greenish.....	23
21. Fruits relatively small (1.5- 7 cm long) or up to 20 cm wide in <i>M. sphaerocarpa</i> ; anther thecae straight, fringed with hairs.....	<i>Melothria</i>
21. Fruits medium-sized to very large; anther thecae glabrous .....	22
22. Young stems, calyx and ovary villous; corolla rotate or broadly campanulate; fruit smooth, globular to ellipsoid, (very) large (e.g., watermelon) .....	<i>Citrullus</i>
22. Young stems and calyx +/- setose or scabrid; corolla campanulate; fruit smooth, setose or tuberculate, globular to ellipsoid, medium-sized to large.....	<i>Cucumis</i>
23. Fruit 7-15 cm long; seeds compressed, (sub)orbicular, 3.5-6 cm in diam., 1.5-2 cm thick .....	24
23. Fruit and seeds smaller [but compare <i>Cionosicyos</i> (33)].....	25
24. Leaves entire, narrowly ovate; fruit ovoid to oblong, not zonate, short apiculate at apex .....	<i>Anisosperma</i>

24. Leaves entire to  $\pm$  deeply lobed or broadly cordate; fruit subglobose, zonate above the middle, rounded at apex ..... *Fevillea*
25. Corolla rotate (sometimes +/- tubular in the lower half), lobes often slightly bifid ..... 26
25. Corolla tubular or funnel-shaped with very short free,  $\pm$  acute lobes ..... 31
26. Fruit an ovoid-conical berry, ca. 2 cm long, sessile in the leaf axils, rostrate .... *Wilbrandia*
26. Fruit pedicellate ..... 27
27. Fruits in pendulous racemes ..... *Helmontia*
27. Fruit solitary ..... 28
28. Anther thecae fringed with hairs ..... *Melothria*
28. Anther thecae glabrous ..... 29
29. Ovary with 2 carpels, stigma bilobed, fleshy ..... *Melothrianthus*
29. Ovary with 3-5 carpels, stigma with 3-5 bifid branches ..... 30
30. Style columnar with 5 bifid stigmata; fruit a smooth,  $\pm$  globular green berry with lines of white dots; seeds in green arillode ..... *Cucurbitella*
30. Style columnar with 3-5 stigmata; fruit a smooth,  $\pm$  globular or fusiform berry, ripening orange to scarlet red, often with white lines or dotted lines; seeds in red arillode  
..... *Ibervillea*
31. Corolla tubular ..... 32
31. Corolla funnel-shaped ..... 33
32. Corolla orange-yellow; leaves simple, with triangular outline, 3-5-lobed; endemic to Hispaniola ..... *Penelopeia suburceolata*
32. Corolla greenish white; leaves 3-5-foliolate with narrowly linear leaflets  
..... *Cayaponia espelina*
33. Corolla snow-white to yellowish; leaves with dentate glandular margin; medium-sized soft-shelled berries with small black seeds ..... *Coccinia*
33. Corolla large, greenish white; leaves eglandular; large ovoid hard-shelled fruits containing large elliptic dark brown or black seeds ..... *Cionosicya*
34. Tendrils mostly 2-fid ..... 35
34. Tendrils 3-7-fid ..... 45

35. Corolla lobes yellow, inside with dark central spot.....	<i>Schizocarpum</i>
35. Corolla yellow, white, cream or greenish white, without a dark spot at the base .....	36
36. Fruit operculate or explosively dehiscent .....	37
36. Fruit indehiscent .....	40
37. Fruit operculate .....	38
37. Fruit explosively dehiscent .....	39
38. Corolla yellow.....	<i>Luffa</i>
38. Corolla white or cream .....	<i>Echinopepon</i>
39. Fruit with few large circular seeds in spongy pulp.....	<i>Hanburia</i>
39. Fruit with few to many, small, compressed, angled, 2-lobed at apex and base, often ± turtle-shaped seeds with crustaceous and verrucose testa .....	<i>Cyclanthera</i>
40. Annual herb with thin roots; corolla yellow; cultivated vegetable.....	41
40. Perennial plants, often with thick woody rootstock and trunk-like base .....	42
41. Ovaries and young stems +/- glabrous (pumpkin, squash).....	<i>Cucurbita</i>
41. Ovaries and young stems hispid to villous (watermelon).....	<i>Citrullus</i>
42. Corolla large, campanulate; seeds pale yellowish brown with densely appressed hairy testa .....	<i>Tecunumania</i>
42. Corolla smaller, rotate or tubular; seeds glabrous .....	43
43. Corolla rotate .....	<i>Apodanthera</i>
43. Corolla tubular .....	44
44. Fruit globose, smooth, 5-7 cm in diameter, ripening yellowish; seeds many, elliptical in fleshy pulp; endemic to Hispaniola .....	<i>Penelopeia sphaerica</i>
44. Fruits small, dry or fleshy, with firm, thin wall; seeds compressed, ovoid or ± triangular and apically tricornute in loose cellular pulp.....	<i>Cayaponia</i>
45. Fruit operculate, splitting into valves or opening explosively.....	46
45. Fruit indehiscent .....	49
46. Fruit operculate, many small seeds embedded in fibrous tissue; flowers yellow.....	<i>Luffa</i>
46. Fruit not operculate.....	47

47. Explosively dehiscent fruit with few large circular seeds in spongy pulp.....*Hanburia*
47. Fruit splitting at maturity into several segments, seeds smaller ..... 48
48. Pericarp splitting into three +/- regular carpellar segments; endemic to Mexico  
(Querétaro, Hidalgo, Puebla and Veracruz).....*Peponopsis*
48. Pericarp splitting into several irregular segments.....*Polyclathra*
49. Receptacle-tube campanulate to urceolate, ± inflated; pedicel of male flowers to 30 cm  
long, to 15 cm in female ones .....*Calycophysum*
49. Receptacle-tube not inflated; pedicels shorter ..... 50
50. Annual herb with thin roots; corolla yellow; cultivated vegetables with very large  
globular to ellipsoid fruits..... 51
50. Perennial (or rarely annual) species with smaller fruits ..... 52
51. Ovaries and young shoots hispid to villous (watermelon).....*Citrullus*
51. Ovaries and young shoots +/- glabrous (pumpkin, squash).....*Cucurbita*
52. Corolla yellow, large, fleshy, campanulate; fruit a smooth, firm, often reddish brown  
pepo, globose, ellipsoid or cylindrical, up to 60 cm long .....*Sicana*
52. Corolla white, yellow or greenish, rotate, small; fruit smaller, not a brown pepo ..... 53
53. Fruits 1-2.5 cm long, fleshy or hard, ellipsoid, or less often globose, indehiscent, smooth,  
thin-walled, ripening green, red, brown or black; usually many-seeded ..... *Cayaponia*
53. Fruits 1-seeded, often much larger ..... 54
54. Fruits solitary, pear-shaped, to 20 cm long (chayote, xuxu), or in most species much  
smaller and in dense capitulae, fusiform, winged, or 3-4-angled, often villous or armed  
with retrorse barbs; receptacle-tube (broadly) campanulate, in some species with pouch-  
like nectaries at the base .....*Sicyos*
54. Fruits solitary, pear-shaped, 3-6 cm long fleshy; receptacle-tube semi-globose, with ten  
pouch-like nectaries at the base, in some species with umbrella-like cover.....*Frantzia*



## GENERIC DESCRIPTIONS

**ANISOSPERMA** Silva Manso, Enum. Subst. Brazil. 38. 1836.

Dioecious (sometimes monoecious?), perennial vines; stems terete, woody, slender,



*A. passiflora*, fruit and male flowers, photo by P. Acevedo

reaching 3-4 m long. Leaves simple, ovate to broadly lanceolate, membranaceous, up to 13 cm long and 7.5 cm wide, acute at base and apex; petiole short, with two small auriculate glands at the junction with the blade. Tendrils apically bifid, coiling above and below branching point. Flowers small, 5-merous; pedicels longer than the flower, articulate on lower  $\frac{1}{3}$ ; male flowers in condensed racemes; female flowers solitary or in groups of 2-4. Receptacle tube campanulate, green, glandular pubescent, with five tiny, acute sepals; corolla rotate, white or yellowish, the lobes lanceolate, connate on lower  $\frac{1}{4}$ ; stamens 5, anthers monothealous, filaments short, free. Fruit a fleshy, ovoid, ovoid-oblong, subtrigonal, late dehiscent capsule, short-apiculate at apex, 8-15 cm long, smooth or verrucose, opening by longitudinal splits.

Seeds compressed, suborbicular, pale brown, 3.5 cm in diameter and 1.5 cm thick.

**Distinctive features:** Tendrilled vines or lianas; leaves simple, entire; petioles with a pair of auriculate glands at the junction with the blade; small greenish white flower; and large ovoid-oblong, fleshy fruits containing large pale brown seeds.

**Distribution:** The single species, *A. passiflora* (Vell.) Silva Manso; in gallery and moist forests in coastal Brazil, from Bahia south to Santa Catarina; 0-1000 m.

**APODANTHERA** Arnott, J. Bot. (Hooker) 3: 274. 1841.

*Guraniopsis* Cogn. (1908).

Monoecious, herbaceous climbing or trailing vines to 5 m long, with herbaceous or



*A. mandonii*, male inflorescences and fruits, photo by Edgard Heim

succulent stems that develop from a perennial rootstock (to 1 m long and 10 cm in diam.). Leaves simple, 5-foliolate or often 3-5(-9)-lobed, often with unpleasant odor, long-petiolate. Tendrils simple or 2-fid (rarely 3-fid), in some species with thickened base that persists as conical spur-like structure. Flowers small to large (up to several cm across), 5-merous; male flowers in pedunculate racemes; female flowers solitary, rarely long-pedicellate. Receptacle-tube elongated, cylindrical, the sepals linear, subulate, shorter than the tube; corolla rotate, greenish white or yellow, petals free, obovate or oblanceolate; stamens 2-3, inserted on upper half of the tube, filaments short, free, anthers bithecous or one monothecous and two bithecous; ovary ovoid or cylindrical, with numerous, horizontal ovules, stigmata 3, U-shaped. Fruit fleshy, indehiscent, ovoid to ellipsoid, edible,  $\pm$  rostrate, 1-7 cm long, ripening green, red or brown, often with white stripes or spots. Seeds few to many, ovate, compressed; testa smooth, brown, often with beige-white margin.

**Distinctive features:** Usually monoecious vines with unpleasant smell; fruits fleshy, indehiscent, ovoid to ellipsoid,  $\pm$  rostrate, 1-7 cm long, ripening green or red to brown often

with white stripes or spots, containing several ovoid, compressed brown seeds, often with ivory-white margin.

**Distribution:** A New World genus of 20 species with disjunct distribution: three species in Mexico and SW United States, which are probably better placed in the genus *Cucurbitopsis* (Belgrano 2012), the remaining 17, in central and southern South America; open disturbed habitats, scrubs and Andean grasslands; 0-3500 m.

**CALYCOPHYSUM** H. Karsten & Triana, Nuev. Jen. Esp. 20. 1855 [‘1854’].

Monoecious, herbaceous to woody vines, reaching 10-15 m long. Leaves simple,



*C. weberbaueri*, male flower, photo by Daniel Montesinos

cordate, hastate, ovate-cordate, sometimes 3-, 5- or 7-lobed, with entire, undulate, serrate or minutely glandular dentate margins; petioles < than ½ as long as the blade. Tendrils slender, 3-6-fid, with apical, adhesive pads. Flowers large, 5-merous, solitary, axillary, pendant, pollinated by bats; peduncle of male flowers up to 30 cm in length, and up to 15 cm in female flowers. Receptacle-tube campanulate to urceolate, inflated, reticulate veined, sepals, large, ovate-lanceolate, as long as the tube; corolla rotate to tubular-campanulate, white or yellowish

green, lobes as long or longer than the tube; stamens 3, inserted on upper half of the tube, filaments free, the anthers more or less free, two bitheous, one monotheous with duplicate thecae; ovary ellipsoid with three placentae and numerous horizontal ovules, style fleshy with three stigmata. Fruit an edible, ellipsoid pepo, smooth, green with dark green stripes, ripening yellow to orange. Seeds many, compressed, irregularly elliptical, arillate; testa dark brown, irregularly sculptured.

**Distinctive features:** Lianas or vines with 3-6-fid tendrils with adhesive pads; flowers large, solitary, pendant, bat-pollinated; peduncles 15-30 cm long.

**Distribution:** Four species in Andean cloud forests and lowland rainforest from Venezuela, Colombia, Ecuador to Peru and Bolivia; 200-2000 m.

**CAYAPONIA** Silva Manso, Enum. Subst. Braz. 31. 1836, (nom. cons.).

*Trianosperma* (Torr. & A. Gray) Mart. (1843); *Selysia* Cogn. (1881).

Monoecious or dioecious, herbaceous or slightly woody vines, up to 20 m long. Stems



*C. americana*, male flower, photo by P. Acevedo

angular or terete, sometimes swollen at nodes, reaching 3 cm in diam. in some species; cross sections in some species with axial vascular elements divided in radial

segments by broad strips of ground tissue (fig. 1a). Leaves simple, palmately 3-7-lobed, less often 3-5-foliolate or entire, the blade often decurrent on the petiole, and often with 2 disc-shaped glands at the base. Tendrils 2- to 7-fid (simple in *C. espelina* (Silva Manso) Cogn.), sometimes with apical adhesive pads. Flowers small, 5-merous, in racemes, panicles, pairs or

solitary, male and female often coaxillary, opening mostly at night. Receptacle tube shortly campanulate to cylindrical with minute sepals; corolla tubular, yellow, white or light green, lobes as long as or shorter than the tube; stamens 3, inserted near the base of the tube, filaments free, two anthers bitheous, one monotheous, usually coherent in a head with duplicate or triplicate thecae; ovary globose, ovoid or oblong with 1-3 placentae and 2-30 ascending ovules, nectary cupular, the style erect, linear with three dilated, reflexed, strongly papillose or smooth stigmata. Fruits small (1-2.5 cm long), fleshy or hard, ellipsoid, or less often globose, indehiscent, smooth, thin-walled, ripening green, red, brown or black, often with very bitter taste. Seeds 1-30, compressed, erect, irregularly ovate or oblong, triangular or dagger-shaped, truncate and apically tricornute, embedded in loose cellular pulp; testa brown, rigid and smooth, woody, without a distinct margin.

**Distinctive features:** Much-branched climber or trailer with 2- to 7-fid tendrils, small flowers and small, dry or fleshy, indehiscent fruits with firm, thin wall; seeds compressed, ovoid or  $\pm$  triangular and apically tricornute in loose cellular pulp.

**Distribution:** A tropical genus of about 75 species, one species in Africa, 73 in the Neotropics from Mexico to northern Argentina, with most species in South America; along forest margins, clearings, riverine and moist forests; 200-3000 m.

**CERATOSANTHES** Adanson, Fam. Pl. 2: 139. 1763.

Dioecious or monoecious, herbaceous vines, 3 to 5 m long, with large tuberous rootstock. Leaves simple, ovate, pentagonal, reniform, or palmately 3- or 5-lobed, petiolate, sometimes reduced or caducous at flowering time. Tendrils simple, filiform, short. Flowers small, 5-merous; male flowers in long pedunculate racemes; female flowers solitary or in fascicles of 2-4. Receptacle tube narrow-infundibuliform, elongate, sepals lanceolate, ca. 2 mm long; corolla cream, petals connate at base, ca. 10 mm long, bifid on distal half, each lobe usually coiled; stamens 3, inserted near the mouth of the tube, filaments very short, two anthers bitheous, one monotheous with straight thecae; ovary globose to fusiform with two placentae and many horizontal ovules, stigma two, bifid. Fruit an indehiscent berry, ovoid-



*C. palmata*, male inflorescence, photo by P. Acevedo

oblong, green or red, often white-spotted, rostrate, smooth, glabrous, ca. 4 × 2 cm. Seeds many, ovoid to subglobose, tumid, smooth and pale, with distinct margin.

**Distinctive features:** Dioecious or monoecious vines with bifid petals and often white-spotted berries with ovoid pale seeds.

**Distribution:** A South American genus of 12 species east of the Andes, from Colombia to NE Brazil and South to northern Argentina, and Lesser Antilles, with most species restricted to Brazil; semiarid plains, mountain slopes, roadsides, and cultivated ground; 0–100 m.

**CIONOSICYS** Grisebach, Fl. Brit. W. I. 288. 1860.

Monoecious, herbaceous or woody perennial vines, several meters long. Leaves



*C. excisus*, male flower, photo by CICY Flora de la Península de Yucatán

simple, large, coriaceous, ovate, entire or trilobed, petiolate. Tendrils simple. Flowers large, 5-merous, solitary and axillary. The receptacle-tube turbinate in male flowers, cup-shaped in female flowers, sepals ovate-lanceolate; corolla funnel-shaped to rotate, greenish white, lobes ovate-oblong, fused at the base; stamens 3, inserted at the base of the tube, filaments free, the anthers connate into a central column; ovary ovoid, placentae 3,

with many, ascending to horizontal ovules, the stigmata strongly papillose. Fruit a large, ovoid, fleshy, hard-shelled pepo, to 10 cm across, glabrous, ripening orange-yellow, edible, tasting like Papaya. Seeds many, elliptic, tumid, 1–1.8 cm long, in white or reddish pulp; testa dark brown to black.

**Distinctive features:** Monoecious vines with simple leaves and large greenish white flowers and large ovoid hard-shelled edible fruits containing large elliptic dark brown or black seeds.

**Distribution:** A neotropical genus of 4 species distributed from northern Mexico to Panama, Cuba and Jamaica; forest margins and montane forests; 100-650 m.

**CITRULLUS** Schrader in Ecklon & Zeyher, Enum. 279. 1836, (nom. cons.).

Monoecious, annual herbaceous vines, creeping or climbing, up to 6 m long. Stems



*C. lanatus*, mature fruit, photo by H. Schaefer

sulcate, pubescent. Leaves simple, rounded or broadly triangular-ovate, palmately 3-5-lobed, the segments lobulate or dissected, petiolate. Tendrils bifid, trifid or simple. Flowers 5-merous, axillary, usually solitary. Receptacle-tube broadly campanulate with

narrow sepals; corolla yellow, rotate or broadly campanulate, medium-sized, lobes ovate-oblong, connate at the base; stamens 3, inserted near the base of the tube, filaments free, short, two anthers bithecous, one monothealous with flexuous thecae; ovary ovoid, with 3 placentae with many horizontal ovules, the style short, columnar with three thick, reniform, more or less trilobed stigmata. Fruit edible, large, globose or oblong, with fleshy red or yellow mesocarp, indehiscent, glabrous. Seeds many, oblong, compressed, smooth; testa pale yellowish, blackish or brown.

**Distinctive features:** Monoecious, annual creeper with palmately 3-5-lobed leaves, medium-sized yellow flowers with flexuous anther thecae and short style, fruits fleshy, large, globose or oblong.

**Distribution:** An Old-World genus of 7 species some of which are cultivated for their edible fruits. *Citrullus lanatus* (Thnb.) Matsum. & Nakai the common water-melon, is widely

cultivated and locally naturalized in the Neotropics; disturbed, open areas, commonly in sandy substrates; 0-300 m.

**COCCINIA** Wight & Arnott, Prodr. 347. 1834.

Dioecious, subwoody vines, trailing or climbing, reaching up to 20 m long, with



*C. grandis*, male flower, photo by P. Acevedo

woody base and  $\pm$  tuberous roots.

Stems herbaceous, pentagonal, reaching 2 cm in diam.; cross section with axial vascular elements divided in radial segments by broad strips of ground tissue (fig. 1b). Leaves simple, pentagonal-cordate, with dentate margins, the teeth yellowish brown glandular.

Tendrils simple. Flowers 5-merous, 3-4 cm long, solitary (in

other Old-World species clustered or in racemes). Receptacle-tube short, turbinate, green, with dentiform sepals; corolla yellowish to snow-white, funnel-shaped, the lobes ovate, as long as or shorter than the tube; stamens 3, inserted at the base of the tube, filaments free, apically connate or completely connate, the anthers free or forming a central head, all bitheous; ovary ovoid, oblong or linear, smooth, with 3 placentae and many horizontal ovules, the style columnar, stigmas bilobed. Fruit indehiscent, an edible, fleshy berry, ellipsoid, 3-5 cm long, ripening scarlet-red, often with a few light spots or lines. Seeds many, obovate, compressed; testa fibrillose, marginate.

**Distinctive features:** Dioecious herbaceous vines; leaves cordate, scabrid, with dentate-glandular margins; corolla white, funnel-shaped; fruit a fleshy, ellipsoid, edible berry, ripening scarlet-red.

**Distribution:** An Old-World genus of 25 species, of which *C. grandis* (L.) Voigt is naturalized throughout the Neotropics, locally becoming invasive; 0-300 m.



**CUCUMIS** Linnaeus, Sp. Pl. 1011. 1753.

Monoecious, herbaceous, annual vines, climbing or trailing, with fibrous roots, reaching ca. 2 m long. Leaves simple, entire, dentate or palmately lobed, petiolate. Tendrils



*C. anguria*, male flower, photo by P. Acevedo

simple, shorter than the leaves. Flowers 5-merous, solitary or in axillary fascicles, small to medium-sized.

Receptacle-tube funnel-shaped, campanulate or disciform, sepals minute, long-triangular to filiform; corolla yellow, campanulate, the lobes elliptic or

(ob)ovate, free or connate at base into a short tube; stamens 3, inserted on upper half of the tube, filaments free, short, glabrous, two anthers bithecal, one monothealous with lateral, straight or triplicate thecae; ovary globose to oblong, hairy, with 3 placenta bearing several horizontal ovules, the style terete, thick, glabrous, stigma entire, sublobate or trilobed with carnoselobes, often with 1-9 finger-like projections on the margin. Fruit fleshy, globose to ellipsoid, cylindrical, (ob)ovoid, or fusiform, smooth, glabrous, pubescent, densely echinate, pustulate or tuberculate, sometimes beaked, ripening yellow or greenish to brownish, often with longitudinal pale stripes, usually indehiscent. Seeds ovate, elliptic, circular or lenticular, compressed, small to medium-sized; testa light-colored, smooth or ornamented, glabrous or rarely puberulent, margin often distinct.

**Distinctive features:** Annual climbers or trailers with hispid leaves, simple tendrils, medium-sized yellow flowers, and ovoid to spindle-shaped fruits with white or orange-yellow, often sweet flesh.

**Distribution:** An Old-World genus of about 63 species, 3 of which (*C. melo* L., *C. sativus* L., *C. anguria* L.) are widely cultivated for their edible fruits (cucumbers, muskmelons, horned melons and gherkins). The referred species have become locally naturalized in the Neotropics including the invasive weed *C. dipsaceus* Spach; disturbed ground and abandoned fields; 0 - 2000 m.

**CUCURBITA** Linnaeus, Sp. Pl. 1010. 1753.

Monoecious annual (or rarely perennial), herbaceous vines, climbing or trailing, reaching 6 m long, with fibrous or fleshy roots. Stems angular and often hollow, with soft or slightly rigid pubescence. Leaves simple, ovate-cordate to suborbicular, pedately 3-5(-7)-lobed, sometimes with foetid odor, long-petiolate. Tendrils 2- to 7-fid, rarely simple (absent in cultivars like zucchini). Flowers, large, solitary, axillary. Receptacle tube campanulate, rarely cylindrical, with (4)5(-7), lanceolate or foliaceous sepals; corolla yellow, campanulate, deeply lobed; stamens 3, inserted at the base of the tube, filaments short, fleshy, two anthers bithecal, one monotheous, fused into a central head; ovary oblong, globose, cylindric or pear-shaped, constricted at apex, with 3-5 placentae and many horizontal ovules, the style short, thick, with 3-5, bifid stigmata. Fruit a large, fleshy, indehiscent pepo of variable form and colour, smooth or ribbed, with woody or corky peduncle, the mesocarp soft, fibrous, white, yellow or orange, sweet or bitter. Seeds many, ovate to elliptic, strongly compressed; testa smooth, cream or black, with or without a distinct margin.



*C. okechobeensis*, fruit, photo by P. Acevedo

**Distinctive features:** Annual or perennial monoecious climbers or trailers, with 2-7-fid tendrils, large leaves, large yellow flowers, and (very) large pepo fruits.

**Distribution:** A New-World genus of about 18 species native to Continental America, 17 of which are found in the Neotropics, most diversity in Mexico with 13 species; many species cultivated worldwide for their edible fruits (squash or pumpkin); disturbed places, humid ravines, floodplains, tropical deciduous forest, grasslands, deserts, rocky hillsides, oak- and pine-oak forests; 0-600 m.

Note: A few cultivars of *Cucurbita pepo* - zucchini, courgette, develop into bushy tendrillless plants.

**CUCURBITELLA** Walpers, Repert. Bot. Syst. 6: 50. 1846.

Monoecious or dioecious, herbaceous vines, climbing or trailing, reaching several



*C. aspera*, male flower, photo by Boris Schlumpberger

meters long, with perennial tuberous roots. Leaves simple, entire, dissected, or palmately 3-7-lobed, petiolate, with unpleasant odor. Tendrils simple. Flowers small, male flowers produced in racemes (rarely solitary), female flowers solitary. Receptacle-tube campanulate with five sepals; corolla orange to yellow, radiate, the five petals fused in the lower half; stamens 3, inserted near the mouth of the tube on short, conspicuously hirsute filaments, two anthers bitheous, one monotheous, with straight thecae; pollen tricolporate, finely reticulate, medium-sized; ovary oblong, pubescent, with five placentae and many horizontal ovules, the style columnar with five bifid stigmata.

Fruit a globose berry, ripening greenish with white spots or lines. Seeds many, ovate, compressed embedded in a green, sticky pulp; testa smooth, brown, with distinct margin.

**Distinctive features:** Monoecious or dioecious herbaceous climber or trailer with tuberous root, simple tendrils, leaves with unpleasant odor, small orange to yellow flowers and globose greenish berries with pale spots or lines and many seeds in green, sticky pulp.

**Distribution:** A south-central South American genus of a single variable species (*C. asperata* (Hook. & Arn.) Walp.) which might turn out to be in fact a group of several cryptic species; dry scrubs and disturbed grounds; Bolivia, Brazil (MT, MS), Paraguay, Uruguay, and Argentina; dry bushland, 200-800 m.

**CYCLANTHERA** Schrader, Index Sem. Gött. 1831: 2. 1831.

*Rytidostylis* Hook. & Arn. (1840); *Pseudocyclanthera* Mart. (1954); *Cremastopus* P.G. Wilson (1962).



*C. langaei*, young fruit, photo by P. Acevedo

Monoecious, annual or perennial, herbaceous vines, reaching up to 10 m long. Leaves simple, lanceolate, cordate or orbicular, 3-9-lobed, or pedately 3-7-foliolate, margins glandular dentate; petioles short, stout, furrowed. Tendrils simple or bifid (rarely many-fid), to 30 cm long. Flowers small to medium-sized; male flowers in racemes or panicles; female flowers solitary (rarely in groups of 2-3), often at the base of the male inflorescence. Receptacle-tube cup-shaped, elongate-tubular or campanulate, often with 5 dentiform, filiform or subulate sepals; corolla rotate, light yellow or white with greenish venation, with 5 (-10) (ovate-) triangular lobes; stamens 3, the filaments fused into a central column, the anthers connate into a globose or disc-shaped head; ovary ovoid to obliquely

ovoid, often rostrate, hirsute, echinate, or setose, with 1 to many ovules, the style very short or elongate, slender with large, subglobose to spherical stigma. Fruit obliquely ovoid to reniform or triangular, fleshy, often setose or echinate (rarely glabrous), explosively dehiscent (rarely indehiscent). Seeds 1 to many, compressed, angled, 2-lobed at apex and base, often  $\pm$  turtle-shaped; testa crustaceous and verrucose.

**Distinctive features:** Annual or perennial herbaceous vines with small greenish white flowers; anthers connate into a globose or disc-shaped head; fruits setose or echinate, explosively dehiscent, seeds often  $\pm$  turtle-shaped; testa crustaceous, verrucose.

**Distribution:** A New-World genus of 37 species distributed from Southwestern United States, to northern Argentina including the Galapagos, 35 species in the Neotropics; disturbed habitats (roadsides, clearings and cultivated grounds, hedges), tropical deciduous forests, and montane cloud forests; 100-2500 m. *Cyclanthera pedata* Schrader (caigua, achocha, slipper gourd) is cultivated as a vegetable in tropical regions worldwide.

**DOYEREA** Grosourdy, Med. Bot. Criollo 1: 338. 1864.



*D. emetocathartica*, female plant, photo by P. Acevedo

Dioecious, herbaceous vines reaching 10 or more m long. Stems cylindrical, fleshy, fragile with a thick, trunk-like base and tuberous roots. Leaves simple, rounded-cordate or trilobed (sometimes to almost trifoliate), often with prominent, marginal callosities; petiole sulcate, pubescent, ca. 4 cm long. Tendrils simple, with thickened base that persists as a conical spur-like structure. Inflorescence short, axillary, sessile cymes with few to 40, small flowers produced in dense clusters. Receptacle-tube green or pale orange, campanulate, with five oblong, reflexed sepals, to 2 mm long; corolla white, yellowish green, or pale orange,

campanulate with five lobes slightly longer than the tube, often reflexed at apex; stamens 3, inserted near the mouth of the

tube, filaments short, free, two anthers bitheous, one monotheous; ovary ellipsoidal with two placentae and 4-6 ovules per locule, the style thick, simple, with 2 penicillate, subglobose stigmata. Fruits ellipsoid or oblong, fleshy, rostrate, 1-3 cm long, indehiscent, thin-walled, ripening orange or red with white spots. Seeds 8-15, pear-shaped, slightly compressed, 3-4 mm long; testa reddish brown with distinct pale brown margin.

**Distinctive features:** Perennial dioecious climber with stout woody base, simple leaves with conspicuous marginal callosities, simple tendrils and small flowers in dense clusters. Seeds pear-shaped, slightly compressed, reddish brown, with distinct pale brown margin.

**Distribution:** A neotropical genus with one species distributed from Mexico to northern South America (Venezuela, the Guianas, and Brazil), including the West Indies; dry thickets and coastal woodlands; 0-150 m.

**ECHINOPEPON** Naudin, Ann. Sci. Nat. Bot. ser. 5, 6: 17. 1866.

*Brandegea* Cogn. (1890); *Vaseyanthus* Cogn. (1891); *Apatzingania* Dieterle (1974).



*E. wrightii*, fruits and male inflorescences photo by H. Schaefer

Monoecious, herbaceous, annual or perennial vines, up to 5 m long, with fibrous roots or woody rootstock. Leaves simple, angulate-cordate, often palmately 3-5(-9)-lobed or dissected blades, thin, with entire or denticulate margins, petiolate. Tendrils simple or 2-3-fid. Flowers small; male flowers in racemes or panicles; female flowers are mostly solitary. Receptacle-tube green, cup-shaped to urceolate or shallowly campanulate with five small or minute sepals; corolla white or cream, rotate or campanulate with five ovate-triangular petals; stamens 3-5, the filaments fused into a central column, the anthers free, bitheous; ovary conical to ovoid,  $\pm$  rostrate, with one or two placentae and

1-5 erect to ascending (rarely horizontal or pendent) ovules per locule, the style short, the stigma fleshy, subglobose. Fruit ovoid or ellipsoid, operculate, glabrous or hairy, often conspicuously echinate, rostrate. In *E. arachoides* (Dieterle) A.K. Monro & Stafford the fruit is dry, subterranean (to 3.5 cm deep), on 6-9 cm long peduncle. Seeds solitary or few, quadrangular or angular-ovoid, compressed; testa smooth, rugose or sculptured.

**Distinctive features:** Annual or perennial monoecious vines with white or cream flowers and often conspicuously echinate, setose or prickly, operculate fruits and relatively small,  $\pm$  compressed angular seeds.

**Distribution:** A neotropical genus of about 22 species distributed from southern United States to northern Argentina, most diverse in Mexico; 18 species in the Neotropics; forest-clearings, semi-deserts, disturbed areas, ravines, sand dunes and coastal areas. 200-3000 m. Some species are weeds of cultivated ground.

**FEVILLEA** Linnaeus, Sp. Pl. 1013. 1753.



*F. cordifolia*, mature fruit, photo by P. Acevedo

Dioecious, perennial lianas, 10 or more m long. Leaves simple, unlobed, pedately 3-7-lobed or 3-5-foliolate, margins sometimes with secondary veins projecting as a glandular tooth; petiole more or less elongated, sometimes bearing two glands above the distal ½ portion (fig. 4b). Tendrils short or very long, simple or apically bifid, coiling above and below branching point. Male flowers in panicles or fascicles; female flowers solitary or in pairs. Receptacle-tube saucer- or cup-shaped with five, deeply lobed sepals; corolla greenish, yellow or pinkish orange, rotate, petals 5, suborbicular or oblong-hastate, nearly free, ca 4 mm long, lower margins fused to the sepals and extending into a glandular protuberance; stamens 5, inserted near the center of receptacle, the filaments short,

free, the anthers bithecaous with straight, vertical thecae; ovary obconical, subtrigonus, trilocular at the apex and monolocular at the base with three placentae and four pendent ovules per locule, the styles 3, each with bifid stigmata. Fruit a globose or ovoid-oblong, subwoody, mottled green, brown or reddish pepo, 8-16 × 7-13 cm, indehiscent or dehiscent along a large circular calyx scar (fig. 8c). Seeds 10-15, orbicular, compressed, up to 6 × 2 cm; testa pale brown, smooth to striate-verrucous or pustulate, often with a narrow, wing-like margin; endosperm rich in oils.

**Distinctive features:** Perennial dioecious liana often with apically bifid tendrils, *F. pedatifolia* with two glands above the distal ½ of the petiole, small male flowers in panicles or fascicles and large globose or ovate-oblong subwoody pepo with a large circular scar near the apex; seeds large, circular.

**Distribution:** A neotropical genus of 7 species distributed from southern Mexico to northern Argentina including the West Indies; canopy lianas of moist, wet or gallery forests; 0-1700 m.

**FRANTZIA** Pittier, Contr. U.S. Natl. Herb. 13: 127. 1910.

*Polakowskia* Pittier (1910).



*F. tacaco*, fruit and male inflorescences, photo by Alexey Yakovlev

Monoecious, herbaceous vine, several meters long, with tuberous roots. Tendrils 3- to 5-fid. Leaves simple, palmately lobed or angulate, long-petiolate. Flowers small; male flowers in racemes; female flowers solitary or in groups of 2-5, often coaxillary with male inflorescences. Receptacle-tube semi-globose, with ten pouch-like nectaries at the base, some species with umbrella-like covering over the nectaries, sepals 5, triangular or rounded, thick; corolla white, rotate, petals 5,

ovate-lanceolate, acute; stamens 3, inserted at the base of the tube, filaments fused on a central column, two anthers bitheous, one monotheous, or all anthers connate into a subglobose head; ovary fusiform, setose with one placenta and one pendent ovule, the style short with a 3-5-lobed stigma with reflexed lobes. Fruit 3-6 cm long, fleshy, ovoid to fusiform, indehiscent, sulcate at the apex, sparsely spiny along the ridges or at the apices or glabrous, ripening green, yellowish or purple. Seed solitary, ovate, compressed, pendent, woody, often germinating within the fruit.

**Distinctive features:** Monoecious vine with 3- to 5-fid tendrils, ten pouch-like nectaries at the base of the receptacle-tube, and 3-6 cm long fleshy, indehiscent fruits with a single large seed.

**Distribution:** A neotropical genus of 7 species found in Costa Rica, Nicaragua and Panama; forests and secondary scrubs; 200-1750 m. *Frantzia tacaco* (Pitt.) Wunderlin is widely cultivated as a vegetable.



**GURANIA** (Schltdl.) Cogniaux, Bull. Soc. Roy. Bot. Belgique 14: 239. 1875.

*Dieudonnaea* Cogn. (1875).

Duodichogamous vines or lianas, reaching 15 or more meters long. Stems of woody



*G. lobata*, female inflorescence, photo by P. Acevedo

species nearly cylindrical or obtusely pentagonal; cross sections in some species with axial vascular elements divided in radial segments by broad strips of ground tissue, later producing additional vascular cylinders on the periphery of the initial vascular cylinder (fig. 1c). Leaves simple, ovate-cordate, palmately-lobed or 3-

foliolate, often long petiolate. Tendrils simple. Flowers medium-sized; male flowers in fascicles or racemes; female flowers solitary or few together; inflorescences often long-peduncled. Receptacle-tube bright orange to red or yellow (yellowish green), urceolate to cylindrical, fleshy, sepals commonly  $\frac{1}{4}$  to  $\frac{1}{3}$  the length of the tube, with same coloration as the tube or sometimes with green or yellow tip, often spreading; corolla gamopetalous, yellow or orange, fleshy, commonly shorter than the calyx, the lobes commonly lanceolate and erect; stamens usually two, inserted on upper half of the tube, filaments short, the anthers bithecal, with curved to convolute thecae; ovary cylindrical, smooth with two placentae and many, horizontal ovules, stigmata two. Fruits fleshy, up to  $7 \times 2-3$  cm, cylindrical, ellipsoid to pear-shaped, indehiscent, ripening green. Seeds numerous, oblong-elliptic, compressed, embedded in a yellow pulp; testa smooth, grey to blackish, sometimes slightly marginate.

**Distinctive features:** Calyx showy, fleshy, commonly orange to red, and longer than the corolla; fruits fleshy, elongated, often hanging.

**Distribution:** *Gurania* species grow in tropical forest from Central to South America; lowland rainforest to Andean cloud forest; 200-3000 m. There are currently 72 accepted species of *Gurania* in "The Plant List" but the actual species number is probably around 35-40.

**HANBURIA** Seemann, Bonplandia 6: 293. 1858.



*H. mexicana*, young fruit, photo by P. Acevedo

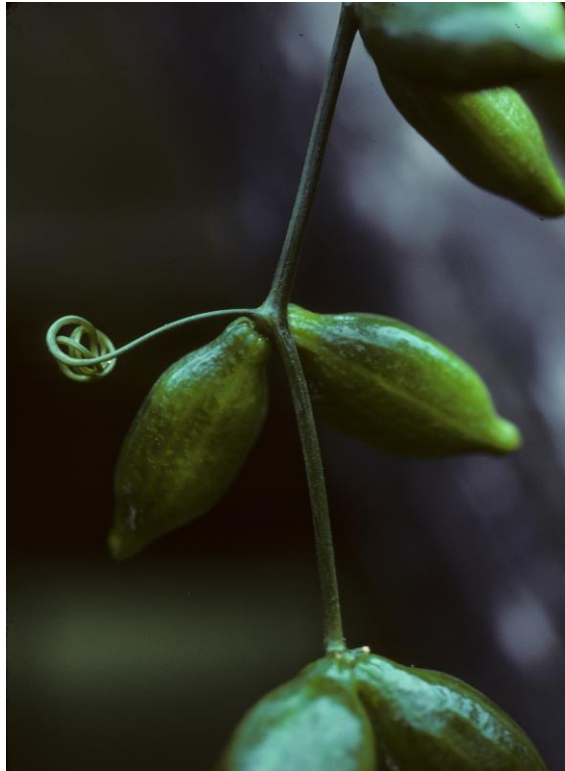
Monoecious vines or lianas, reaching up to 15 m long. Mature stems obtusely pentagonal; cross sections with axial vascular elements divided in radial segments by broad strips of ground tissue (fig. 1e). Leaves simple, broadly-ovate to cordate or pentagonal, entire or 3-7-lobed, some species with discoidal glands at the base of the blade, petiolate. Tendrils 2-5-fid or rarely simple, sometimes with adhesive disks. Flowers medium-sized to large, fleshy; male flowers in pedunculate racemes; female flowers solitary or at the base of the male inflorescence, in some species with conspicuous vanilla-scent. Receptacle-tube short, urceolate-cylindrical or campanulate with five short, triangular or linear to subulate, green sepals; corolla yellow,

greenish white or white, rotate with deep spreading lobes to  $\pm$  campanulate with five to six, triangular, 5-30 mm long petals; stamens 3-5, inserted near the base of the tube, the filaments fused into a central column, the monothealous anthers fused into a central, globose head; ovary ovoid to subglobose or oblique, mostly rostrate, hispid, with several, erect to ascendent ovules, style elongate with a peltate stigma. Fruit fleshy, 11-14  $\times$  7.5 cm, setose, echinate or rostrate, ovoid or asymmetrically pouch-like, explosively dehiscent. Seeds few, large, circular, 2-4 cm in diameter, or ovate to pear-shaped, compressed, angularly lobed, embedded in white, spongy pulp; testa black to grey, smooth or minutely rugulate, with distinct margin.

**Distinctive features:** Monoecious perennial climber with large cordate or pentagonal leaves, some with discoidal glands at the base, tendrils 2-5-fid, some with adhesive discs, large fleshy, greenish yellow or white flowers and a fleshy, densely echinate, explosively dehiscent fruit with few large circular seeds in spongy pulp.

**Distribution:** A neotropical genus of 7 species distributed from northern Mexico south to NW South America (Colombia, Venezuela, Ecuador and Peru); primary and disturbed rain forests, deciduous forests, and cloud forests; 600-1700 m.

**HELMONTIA** Cogniaux, Bull. Soc. Roy. Bot. Belgique 14: 239. 1875.



*H. leptantha*, fruiting inflorescence, photo by P. Acevedo

Monoecious, vines or lianas, reaching several meters long. Leaves simple, entire, palmately lobed or trifoliolate, short-petiolate. Tendrils simple. Flowers small; male flowers many (>100 per inflorescence), in racemes or umbels; female flowers in pendulous racemes. Receptacle-tube obconic to cylindrical with five small, triangular, reflexed sepals; corolla white or yellowish green, rotate or the five petals fused into a tubular lower part, c. 3 mm long; stamens 2, inserted near the mouth of the tube, filaments free, anthers bithecous. Fruits fleshy, ovoid to ellipsoid, indehiscent, ripening yellowish green. Seeds many, smooth, oblong-elliptic, compressed.

**Distinctive features:** Monoecious climber with simple leaves and simple tendrils, large racemes or umbels with many inconspicuous flowers, with white or yellowish green, c. 3 mm long petals.

**Distribution:** A neotropical genus of 3 species from northern South America (Venezuela, the Guianas and Brazil (Amazonas, Pará and Amapá); moist or wet forests; 80-350 m.

**IBERVILLEA** Greene, Erythea 3: 75. 1895.

*Dieterlea* E. J. Lott (1986).

Dioecious, annual or perennial vines or lianas, up to 12 m long, with large tuberous rootstocks, often partly exposed as fleshy pachypodia. Leaves simple, to 10 × 6 cm, unlobed or 3- or 5-lobed, often with dissected lobes, petiolate. Tendrils simple. Flowers small or less



*I. maxima*, male plant, photo by S. Renner

often large, mostly opening during the day, except for *I. fusiformis* (E.J. Lott) Kearns that has strongly fragrant, nocturnal flowers; male flowers in racemes or fascicles (rarely solitary); female flowers solitary.

Receptacle-tube narrowly campanulate to cylindrical, up to 4.5 cm long, with five small, acute sepals; corolla narrowly campanulate white or yellowish with five petals, 4-25 mm long, +/- bifid at apex, united near the base; stamens 3, inserted near the mouth of the tube, filaments free or filaments fused into a central column, two anthers bithecaous, one monothealous with straight thecae; ovary ovoid to fusiform or cylindrical with 3-5 placentae and many, horizontal ovules, the style columnar with 3-5 stigmata. Fruit a fleshy, indehiscent, globose, ovoid, ellipsoid or fusiform berry, 1.5 to 6 cm in diameter and up to 15 cm long, shortly rostrate, ripening yellow to red. Seeds many, irregularly ovoid or turgid, scarcely compressed, embedded in orange-red pulp; testa smooth or verrucous, transversely ridged or smooth, the margins raised.

**Distinctive features:** Vines or lianas with fleshy tuberous roots, often partly exposed as fleshy pachypodia; petals +/- bifid at apex; fruit an up to 15 cm long, fusiform or ellipsoid, shortly rostrate berry.

**Distribution:** A New World genus of 8 species distributed from Texas to Guatemala, 7 of which occur within the Neotropics; semi-deserts, grassy plains, swampy woodlands, thorn-forests, and cultivated fields; 50-350 m.

LINNAEOSICYOS H. Schaefer & Kocyan, Syst. Bot. 33: 350. 2008.



*L. amara*, male plant, photo by Thomas Mitchell

Dioecious, perennial vines, climbing or trailing, up to 6 m long, with fleshy rootstocks. Leaves simple, reniform to suborbicular, entire to deeply trilobed, the upper side distinctly pustulate due to short trichomes with discoidal base, petiolate. Tendrils simple, up to 12 cm

long. Flowers 5-merous, solitary and nocturnal (Mitchell et al. 2015). Receptacle-tube broadly campanulate, up to 20 mm long, glabrous, with narrow-triangular, ca 10 mm long sepals; petals ovate, ca. 30 × 12 mm, white with green veins, with long-fimbriate margins; stamens 3, inserted ca. 10 mm below the mouth of tube, filaments free, ca. 1 mm long, glabrous, two anthers bitheous, one monotheous, all connate into a globose head; ovary ellipsoidal, ca. 25 mm long, with three placentae and numerous ovules, the stigma trilobed with capitate lobes. Fruit turbinate to ellipsoidal, green, pendent, 8-12 × 3-4 cm. Seeds several hundred, linear-oblong, compressed, embedded in a soft, whitish pulp; testa yellowish brown, with distinct, flat margin.

**Distinctive features:** Dioecious vine with white, long-fimbriate flowers opening at night and distinctly pustulate leaves.

**Distribution:** A monotypic, West Indian, endemic genus known only from Hispaniola (Haiti & Dominican Republic); dry thickets and dry forests; 0-400 m.

LUFFA Miller, Gard. Dict. Abr. ed. 4. 1754.



*L. aegyptiaca*, mature fruit, photo by P. Acevedo

Monoecious, herbaceous vines up to 15 m long. Leaves simple, ovate-cordate, palmately 3- to 5-lobed, with denticulate margins; petiole with small, lingulate probract (tiny leaf-like appendage) at the base. Tendrils 2-6-fid. Flowers large; male flowers in racemes; female flowers solitary coaxillary with male inflorescence.

Receptacle-tube campanulate with 3-5 sepals; corolla golden yellow, of 5 free, undulate petals; stamens 5, inserted near the mouth of the tube, filaments free, the anthers monothealous or two bithealous and one monothealous; ovary smooth, ribbed, tuberculate or spiny with many, horizontal ovules, stigmata 3, bilobed. Fruits subglobose, cylindrical or trigonous, brown upon drying, beaked, smooth, ribbed or spiny, operculate (fig. 8d); exocarp thin,

fragile, breaking up to expose a fibrous-reticulate mesocarp (fig. 8d). Seeds numerous, oblong-elliptic, compressed; testa smooth, blackish, with or without a narrow, distinct membranous border and two oblique bumps above the hilum on each face.

**Distinctive features:** Herbaceous vines with rotate yellow flowers and an operculate, dry fruit with fragile walls that break down to expose a network of fibers that contain the seeds.

**Distribution:** A pantropical genus of 8 species, 3 of which are native to continental tropical America, from Mexico to Bolivia and SE Brazil; 0-200 m. In addition, *L. acutangula* (L.) Roxb. and *L. aegyptiaca* Miller, two Indian species are cultivated in the Neotropics as a vegetable and as a source of a fibrous, spongy tissue. *Luffa acutangula* is cultivated in the West Indies while *L. aegyptiaca* is cultivated and naturalized in areas of the Neotropics.

**MELOTHRIA** Linnaeus, Sp. Pl. 35. 1753.

*Melancium* Naudin (1862); *Posadaea* Cogn. (1890).

Monoecious or rarely dioecious (*M. candolleana*), herbaceous vines, climbing or



*M. pendula*, male flower, photo by P. Acevedo

trailing, up to 10 m long, often with perennial rootstocks. Leaves simple, entire or palmately lobed, ovate-cordate in outline, often with unpleasant odor, thin petiolate. Tendrils simple (rarely bifid), solitary (rarely 2 per node) or absent (*M. campestris*). Flowers

are very small; male flowers in pedunculate racemes or umbels; female flowers solitary or rarely in groups of 2-3, usually co-axillary with male flowers. Receptacle-tube campanulate to cylindrical with five short, dentiform or lanceolate sepals; corolla yellow (less often white), rotate with five entire or undulate, (broadly-)ovate petals, sometimes reflexed and fused at the base; stamens 3, inserted on the upper half of the tube, filaments free, short, slender, two anthers bitheous, one monotheous (rarely all bitheous), the thecae straight, fringed with hairs and sometimes apically hooked; ovary smooth, ovoid to fusiform with three placentae and many, horizontal ovules, the style short, surrounded at base by an annular disc, stigmata 3, bilobed or one trilobed. Fruit a small to large (up to 20 cm across in *M. sphaerocarpa*), often edible berry, fleshy, indehiscent, smooth, globose or ellipsoid, ripening green, yellow, orange, reddish or purple blackish, long-pedicellate. Seeds numerous, compressed, ovoid or elliptic, arillate or not, embedded in a fleshy pulp (sweet in *M. dulcis*); testa smooth, ivory-coloured, covered by long appressed hairs, with indistinct margin.

**Distinctive features:** Monoecious or dioecious herbaceous vines with simple ovate-cordate leaves, often with unpleasant odor; small yellow (or rarely white) flowers with straight, fringed, anther thecae, fruits fleshy, often edible.

**Distribution:** A New World genus of 12 species, distributed from southern United States to Mexico south to northern Argentina, including the West Indies; disturbed moist to arid areas, forest margins or woodlands; 0-2200 m.

**MELOTHRIANTHUS** Martínez Crovetto, Notul. Syst. (Paris) 15: 58. 1954.



*M. sagittifolius*, male plant, photo by Mauro Fossati

Dioecious, herbaceous, perennial vines, climbing or trailing, with tuberous rootstock. Leaves simple, lobed, ovate-cordate or lanceolate with subcordate to sagittate base, petiolate, densely silvery-hairy in *M. argenteus*. Tendrils simple. Flowers small; male flowers in corymbs; female flowers solitary. Receptacle-tube narrowly campanulate with five lanceolate sepals, densely hairy inside; corolla yellowish green, rotate, the five oblong-lanceolate petals fused at the base, entire (in *M. sagittifolius* bilobed at apex); stamens 3, inserted near the mouth of

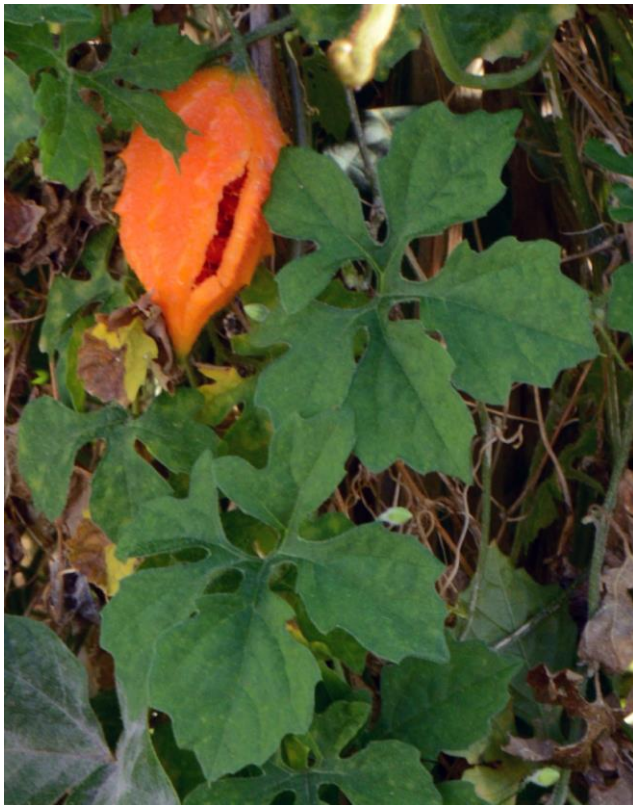
the tube, anthers sessile, two bithecous, one monothealous; ovary narrowly ovate, with two placentae and many, horizontal ovules, the style robust, inserted in the center of a circular disc, stigma bilobed, fleshy. Fruit a small, oblong, ovoid or subglobose, smooth or slightly angled, glabrous or (slightly) pubescent berry. Seeds oblong, more or less compressed, and verrucous.



**Distinctive features:** Dioecious perennial climber or trailer with simple tendrils, small yellowish green flowers and small berries with verrucous seeds.

**Distribution:** A genus of 4 species, 3 of them endemic to Brazil, one species (*M. sagittifolius*) in central Argentina; on dry exposed slopes, in savannas or in more humid valleys, including coastal regions of the Atlantic; 0-1200 m.

**MOMORDICA** Linnaeus, Sp. Pl. 1009. 1753.



*M. charantia*, ripe fruit, photo by P. Acevedo

A Palaeotropical genus with one species (*M. charantia* L.) widespread and naturalized throughout the Neotropics. This species, a monoecious, herbaceous vine, many-branched, reaching up to 8 m long. Old stems partly woody at the base, slightly flattened; cross section with asymmetrically neofomed vascular cylinders (fig. 1f). Leaves pedately 5- or 7-lobed, the lobes deeply undulate or dentate; petioles slender, sulcate or slightly winged. Tendrils simple. Flowers solitary, axillary; peduncle elongate, with a foliose, orbicular bract below the middle. Receptacle-tube green, campanulate, with five lanceolate sepals;

corolla pale yellow to orange yellow, rotate with five free petals, two with scales at the base; stamens 3, with free filaments, two anthers are bitheous, one monothecous, the thecae are triplicate; ovary ovoid, beaked, tuberculate, tricarpellate, with numerous horizontal ovules, the style simple, stigma 3, linear, bilobed. Fruit an orange, fleshy, muricate, fusiform capsule opening by 3 valves. Seeds numerous, pendulous, compressed, ellipsoid, covered by a red, fleshy arillode (fig. 8e), testa sculptured, margins grooved.

**Distinctive features:** Herbaceous vines, with slightly fetid smell; leaves pedately 5- or 7-lobed; capsules hanging, orange, opening to expose numerous pendulous seeds with bright red, fleshy arillode.

**Distribution:** A paleotropical genus with more than 50 species, two of which are introduced

in the Americas. The African *M. charantia* is widely naturalized in open disturbed habitats, a large-fruited cultivar is grown in vegetable gardens, while another African species, *M. balsamina* L., is locally cultivated and probably not naturalized. The Asian gac fruit, *M. cochinchinensis* (Lour.) Spreng., is found cultivated in botanical gardens as an exotic.

**PENELOPEIA** Urban, Repert. Spec. Nov. Regni Veg. 17: 8. 1921.

*Anacaona* Liogier (1980).



*P. suburceolata*, male flowers, photo by P. Acevedo

Monoecious or dioecious, herbaceous or woody vines, up to 10 m long. Leaves simple, with triangular outline, pedately 3-5-lobed, petiolate. Tendrils simple (*P. suburceolata*) or 2-3-fid (*P. sphaerica*). Flowers small to medium-sized; male

flowers solitary or in axillary fascicles; female flowers solitary. Receptacle-tube shortly cup-shaped to campanulate with five triangular sepals, 4-10 mm long, which are fused in the lower half or free; corolla orange-yellow (*P. suburceolata*) or pale green (*P. sphaerica*), cylindrical with five (rarely four) petals, fused in the lower half or free; stamens 3, filaments fused into a central column, anthers connate into a central head, the thecae triplicate; ovary ovoid with three placentae and many, horizontal ovules, stigmata three. Fruit globose, smooth, 5-7 cm in diameter, indehiscent, ripening yellowish. Seeds many, elliptical.

**Distinctive features:** Herbaceous vines to 10 m long with small triangular, pedately 3-5-lobed leaves, yellow or pale green, tubular corolla and globose fruits.

**Distribution:** A West Indian genus endemic to Hispaniola, with 2 species; humid montane forest; above 1000 m.

**PEPONOPSIS** Naudin, Ann. Sci. Nat., Bot., ser. 4, 12: 88. 1859.

Dioecious, perennial lianas, 8-10 m long. Leaves simple, broadly ovate-cordate,



*P. adhaerens*, female plant, photo by O. López Francisco & M. Gorostiza Salazar

unlobed or 3- or 5-lobed, 10-18 cm long, usually with a few disc-shaped glands near the base, petiolate. Tendrils multifid, densely short-villous, with apical adhesive pads. Flowers medium-sized, solitary, axillary. Receptacle-tube obconic-tubular, apically expanded, sepals 5, ovate-lanceolate, up to 2 cm long in male flowers, triangular-lanceolate, acute, 6-7 mm long in female flowers; corolla white to greenish white, broadly campanulate with five, halfway-fused, broadly obovate-oblong, rounded petals, up to 4 cm long; stamens 3, inserted near the base of the tube, filaments free, ca. 5 mm long, two anthers bithecal, one monothealous, the thecae much convoluted; ovary ovoid, glabrous with three placentae and many horizontal ovules, the style 12-14 mm long, with 3 papillose, oblong to ovate-oblong stigmata. Fruit a fleshy, dark green, subglobose pepo, 8-10 cm across, splitting into three carpellar segments. Seeds ca. 200, ovate-oblong, 4-9 × 2-5 mm, compressed; testa greenish to grey, finely perforate, with narrowly winged margin.

**Distinctive features:** Fruit a fleshy, subglobose pepo that splits into three carpellar segments at maturity.

**Distribution:** A Mexican endemic genus of a single, extremely rare species, *P. adhaerens* Naud., distributed in the states of Querétaro, Hidalgo, Puebla and Veracruz; pine forests; 800-1500 m.

**POLYCLATHRA** Bertoloni, *Novi Comment. Acad. Sci. Inst. Bononiensis* 4: 438. 1840.

*Pittiera* Cogn. (1892); *Roseanthus* Cogn. (1896).

Monoecious, herbaceous vines, climbing or trailing, up to several meters long. Leaves



*P. cucumerina*, male flower, photo by E. Siekavizza

simple, cordate, entire, 3- or 5-lobed, petiolate. Tendrils (2-)4(-6)-fid, up to 20 cm long, with stout axis and adhesive pads. Flowers large, showy, nocturnal, solitary and axillary; peduncle very long in male flowers, short in female flowers. Receptacle-tube campanulate to obconic-cylindric, much shorter in female than in male flowers, sepals 5, triangular in male flowers, narrow-triangular in female flowers; corolla white, of 5 broadly rounded petals; stamens 3, inserted on upper half of the tube, filaments long, free, two anthers bitheous, one monotheous, fused into a central head, the thecae triplicate; ovary ellipsoid with many horizontal ovules, the style slender,

elongated with three deeply bilobed stigmata. Fruit a medium-sized berry, ellipsoid to oblong, rounded at the apex, green with white or yellow marks; pericarp splits at maturity into several irregular segments. Seeds many, brown, broadly ovate, compressed, contracted at the base; testa brown, narrowly winged.

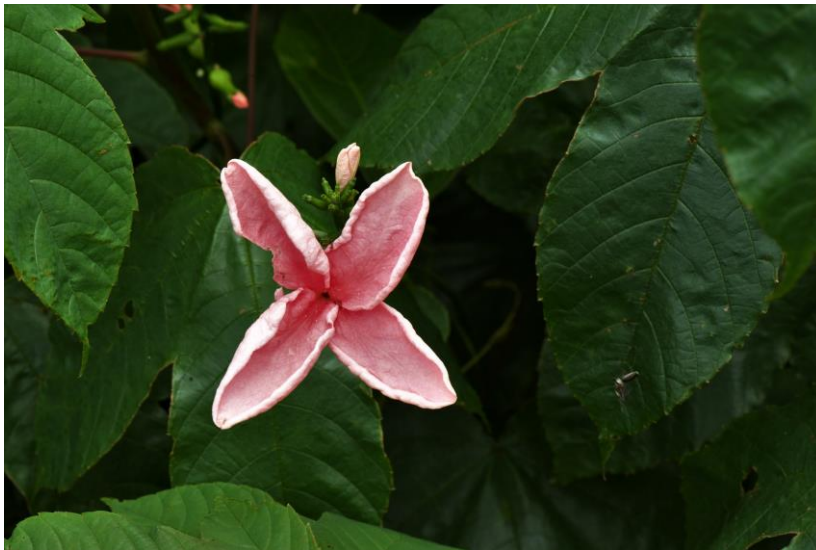
**Distinctive features:** Bright white corolla contrasting with orange-yellow staminal head in male flowers. Fruit  $\pm$  dry, splitting into several irregular segments when ripe. Seeds broadly ovate, compressed, contracted at base; testa brown, narrowly winged.

**Distribution:** A neotropical genus of a single, accepted species *P. cucumerina* Bertol. (but perhaps up to 6 species), found in Mexico, Guatemala, Nicaragua, Costa Rica and Panama; tropical or oak-pine-forests (Kearns 1992); 50-1100 m.

**PSIGURIA** Neck. ex Arnott, J. Bot. (Hooker) 3: 274. 1841.

*Anguria* Jacq. (1760, nom. illegit.).

Duodichogamous (Condon & Gilbert 1988), herbaceous or woody vines, 10 m or



*P. ternata*, male flower, photo by P. Acevedo

more in length. Stems nearly cylindrical and fleshy, reaching 2 cm in diam., bark often corky (fig. 2c); cross sections with axial vascular elements divided in radial segments by broad strips of ground tissue (fig. 2a). Leaves simple, entire, palmately 3- or 5-lobed, or 3-foliolate, petiolate. Tendrils simple.

Male flowers in axillary racemes or spikes; female flowers solitary or in groups of 2-5.

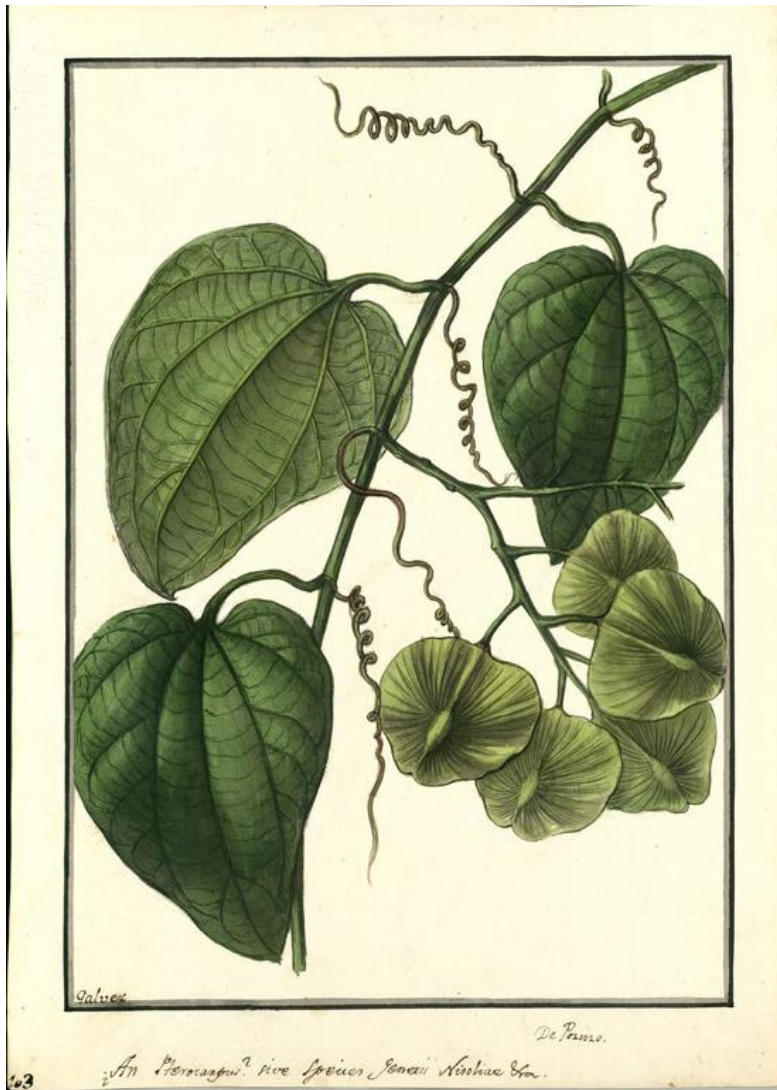
Receptacle-tube green, urceolate to cylindrical, with five small, triangular, sepals; corolla red, orange, or pink, petals broad, spreading; stamens 2, inserted on upper half up the tube, anthers bitheous with duplicate or rarely straight thecae, sessile; ovary oblong, smooth with two placentae and many horizontal ovules, stigmata two. Fruits fleshy, ellipsoid to oblong, smooth, indehiscent, 3-8 × 2-3 cm, ripening yellowish green or black, sometimes striped. Seeds many, up to 11 mm long, oblong-elliptic, compressed; testa smooth, grey.

**Distinctive features:** Old stems with corky bark; leaves shallow to deeply 3- or 5-lobed or trifoliolate; receptacle tube green; corolla orange, red or pink; pollen often in tetrads.

**Distribution:** A neotropical genus of 6 species distributed from northern Mexico south to Bolivia, Paraguay and SE Brazil, including the West Indies; in moist primary or secondary forests, on granitic or limestone substrate; 0-1800 m.

**PTEROPEPON** (Cogniaux) Cogniaux, Pflanzenr. IV 275 (Heft 66): 260. 1916.

*Pseudosicydium* Harms (1927).



*P. acarianthus*, by I. Galvez, in Ruiz & Pavón, Royal Botanical Expedition to the Viceroyalty of Peru. Image by Real Jardín Botánico de Madrid, Spain

Monoecious or dioecious, herbaceous or woody vines, with tuberous roots. Leaves simple, subdeltoid, subcircular or subcordate, entire, 3- or 5-lobed, the base subtruncate with two lateral punctate glands just above the insertion of the petiole. Tendrils simple or apically bifid, coiling above and below branching point. Flowers small; male flowers in panicles or thyrses; female flowers solitary or few in monochasia or panicles. Receptacle-tube saucer-shaped with five linear, or deltoid to lanceolate sepals; corolla whitish, greenish or yellowish, rotate with five ovate-lanceolate, petals, fused at the base; stamens 1-3, inserted at

the base of the tube, filaments short, recurved and free, less often absent or fused into a central column, the anthers either all monothealous, or two bithealous and one monothealous, or one bithealous and one monothealous, or only a single bithealous anther, the thecae straight and horizontal; ovary oblong, strongly compressed-subtrigonal, unilocular with an apical placenta and one pendent ovule, the styles 3, each with bifid stigma. Fruit a large, fibrous samara with a continuous, encircling wing or the fruit small, compressed, membranaceous, with two lateral wings, solitary or in groups of 2-3. Seed solitary, pendent, compressed; testa verrucous or scrobiculate.

**Distinctive features:** Leaves with two lateral punctate glands just above the insertion of the petiole; flowers inconspicuous; samaroid fruits with a single seed.

**Distribution:** A South American genus of 6 species found in Colombia, Ecuador, Peru, Bolivia, NW Argentina and Brazil (Amazonia and Bahia); along ravines and rivers, moist or rain primary forests, secondary scrubs; 50-920 m.

**SCHIZOCARPUM** Schrader, Index Sem. Gött. 1830: 4. 1830.

Monoecious, annual or perennial vines, up to 7 m long. Leaves simple, entire, 3- or 5-



*S. parviflorum*, male flowers, photo by J. Álvarez

lobed, petiolate. Tendrils bifid. Flowers solitary, large and showy. Receptacle-tube elongated, subcylindric at base, expanded distally with five reflexed or ascending, linear, ovate or triangular sepals; corolla campanulate, yellow, inside with dark central spot, petals 5, triangular, fused on lower half; stamens (2)3(4), inserted near the mouth of the tube, filaments free, the anthers connate into a central ovoid head with triplicate thecae; ovary ovoid or fusiform, often rostrate, with three placentae and 12 or more, ascending ovules, the style slender with 3 fleshy stigmas. Fruit a dry,

woody capsule, ellipsoid to pear-shaped, smooth, rostrate, indehiscent or splitting basipetally into three valves, each with two rows of seed chambers, followed by the abscission of the pericarp. Seeds ovoid, compressed, 8-10 mm long; testa smooth, brown or banded crosswise with light and dark stripes, margin with or without wing.

**Distinctive features:** Flowers, solitary, large, campanulate, yellow, inside with dark central spot; fruits dry, woody, in some species splitting into 3 woody carpellate units bearing 2 chambers of seeds; seeds ovoid, compressed; testa brown or banded crosswise with light and dark stripes.

**Distribution:** A neotropical genus of 10 species distributed in Mexico and Guatemala; oak or pine forests, deciduous forests, disturbed grounds and coastal plains; 0-2000 m.

**SICANA** Naudin, Ann. Sci. Nat., Bot., ser. 4, 18: 180. 1862.



*S. odorifera*, male flower, photo by P. Acevedo

Monoecious, annual or perennial vines, up to 15 m long. Leaves simple, ovate to suborbiculate, palmately 3-9-lobed, up to 24 cm long, often with discoidal glands at the base, petiolate. Tendrils 3-5-fid, with apical adhesive pads. Flowers solitary, medium-sized to large,

showy. Receptacle-tube obconical or campanulate with 5 triangular-lanceolate, reflexed or less often ascendent sepals; corolla campanulate, yellow and sometimes greenish in the center, fleshy, petals 5, as long as or shorter than the tube; stamens 3, inserted near the mouth of the tube, filaments short, free or connate; two anthers bitheous, one monothecous with duplicate thecae; ovary elliptical with three placentae and many horizontal ovules, the style short, with 3 stigmata. Fruit a smooth, firm pepo, globose, ellipsoid or cylindrical, up to 60 cm long, exocarp commonly reddish brown. Seeds many, compressed, ovate, with distinct margin and sometimes narrowly winged.

**Distinctive features:** Herbaceous vine, with thick, fleshy, sulcate stems; leaves large, glabrous; flowers yellow, large, fleshy, campanulate; fruit with fleshy, light yellow mesocarp with numerous dark brown seeds.

**Distribution:** A neotropical genus with disjunct distribution, of 4 species, one species native to Peru and Bolivia, another to Cuba and Jamaica, another to Hispaniola, and a fourth one



endemic to the island of Trinidad on the northern coast of South America; rain forests and secondary scrubs; 0-600 m. The cassabanana, *Sicana odorifera* (Vell.) Naud. is widely cultivated in northern South America, parts of Central America and the West Indies.

**SICYDIUM** Schlechtendal, *Linnaea* 7: 388. 1832.



*Sicydium tamnifolium*, female plant, photo by J. Amith

*Chalema* Dieterle (1980).

Dioecious or rarely monoecious, perennial or annual vines with tuberous or fibrous roots. Leaves simple, (sub)cordate at base, acuminate at the apex, petiolate. Tendrils simple or apically bifid, coiling above and below branching point. Flowers small, in axillary panicles. Receptacle-tube saucer-shaped with five small sepals; corolla whitish green, rotate with five ovate-lanceolate to triangular petals; stamens 3 or 5, inserted near the base of the tube, filaments very short, free or connate, the anthers all monothealous or two bithealous and one monothealous with straight thecae; ovary ovoid with one pendent ovule, styles 3, linear, with linear or punctiform stigmata. Fruits small,

baccate, globose, fleshy or fibrous, ripening black, or a dry globose achene, ca. 3 mm across. Seed solitary, brownish, (sub)globose or compressed; testa rugose to verrucose.

**Distinctive features:** Easily confused with Vitaceae because of the small, globose fleshy fruits, but distinguished by the tendrils at a 90° angle with the petioles (vs. leaf-opposed in Vitaceae) and one-seeded fruits.

**Distribution:** A neotropical genus of 9 species distributed through continental tropical America and Cuba; open and disturbed sites, deciduous forest, gallery forests, moist forests and dry forests; 0-1800 m.

**SICYOS** Linnaeus, Sp. Pl. 1013. 1753.

*Sechium* P. Browne (1756); *Sicyosperma* A. Gray (1853); *Sechiopsis* Naudin (1866); *Microsechium* Naudin (1866); *Pterosicyos* Brandege (1914); *Ahzoia* Standl. & Steyerl. (1944); *Anomalosicyos* Gentry (1946); *Parasicyos* (1975) *Costarica* L. D. Gómez (1983).

Monoecious, annual, or perennial vines, climbing or trailing, up to 10 m long, with



*S. palmatus*, male flowers, photo by P. Acevedo

fibrous to tuberous roots.

Leaves simple, angulate or lobed, petiolate (rarely sessile). Tendrils simple or (2-) 3-5 (6)-fid, often with long, stout axis. Flowers small, white or yellowish green; male flowers in racemes or panicles (rarely umbels); female flowers solitary, in groups of 2-5 or in dense capitula of up

to 40 flowers. Receptacle-tube (broadly) campanulate, in some species with pouch-like nectaries at the base, sepals 5, dentiform or linear, very small; corolla rotate with five triangular to ovate-triangular, rarely bifurcate, basally fused petals; stamens 2-5, inserted near the base of the tube, filaments fused into a central column, the anthers all monothealous, or two anthers bithealous and one monothealous, all commonly fused into a central head, the thecae straight, duplicate, sigmoid or flexuous; ovary ovoid to fusiform, usually pubescent to setose, rarely winged or angular, with a solitary, pendent ovule, the styles short or slender, with (2-) 3 dilated, often reflexed stigmata. Fruits dry or fleshy, indehiscent, solitary or in capitula, small or medium-sized, globose, ovoid, obovoid, pear-shaped, fusiform, winged, or 3-4-angled, glabrous or villous, sometimes armed with retrorse barbs, pedicellate. Seed solitary, ovoid, tumid or compressed, sometimes germinating inside the fruit; testa smooth or crustaceous.

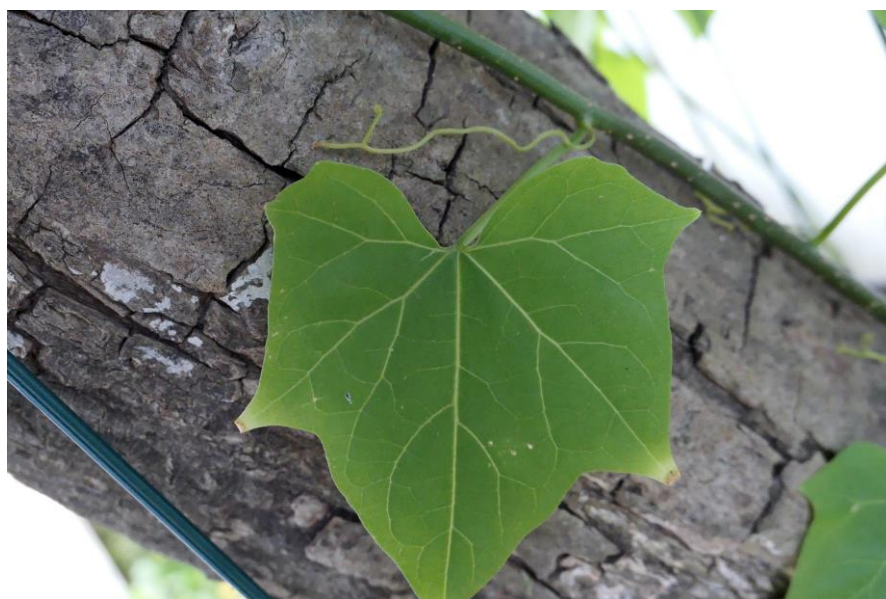
**Distinctive features:** Monoecious, mostly annual climber with greenish white flowers, anthers commonly fused into a central head, fruits often in dense capitulae, fusiform, winged, or 3-4-angled, often villous or armed with retrorse barbs, single-seeded.

**Distribution:** A primarily continental American genus of 60 to 70 species with some species in the Pacific Islands and SE Australia; 39 species in the Neotropics, distributed from Mexico

to Bolivia and SE Brazil, including Cuba and Hispaniola; humid forests and moist disturbed habitats; 0-2000 m. *Sicyos polyacanthus* Cogn. has been introduced in Africa, and the *chayote or xuxu*, *Sicyos edulis* Jacq., a species native to Mexico, is cultivated as a vegetable throughout the Tropics and Subtropics, sometimes becoming naturalized.

**SIOLMATRA** Baillon, Bull. Mens. Soc. Linn. Paris 1: 458. 1885.

Dioecious, liana to 10 or more meters long, often with a tuberous base. Leaves



*Siolmatra* sp. with 5-lobed leaf and apically bifid tendril photo by P. Acevedo

trifoliolate, 5-palmate-compound or 5-lobed, the lateral leaflets asymmetric; petiole with a basal ring-shaped callus. Tendrils apically bifid, coiling above and below the branching point, sometimes with adhesive pads. Flowers in panicles. Receptacle-tube

saucer-shaped with three small sepals; corolla white, contorted with five unguiculate, obovate petals; stamens 5, inserted at the base of the tube, filaments short, free, the anthers monothealous with straight, horizontal thecae; ovary obconical, subtrigonal, trilobular at the apex and unilobular at the base, with 3 placentae, each contain two pendent ovules, styles 3, with bilobed, reniform stigmata. Fruit a pendent, obconical-subtrigonal, subwoody-crustose capsule up to 5 cm long, truncate at apex, dehiscent by a triradiate, apical split. Seeds strongly compressed, ellipsoid; testa yellowish brown, finely verrucous, the margin with ca. 2 cm long, membranous wing along the chalaza-micropyle axis.

**Distinctive features:** Perennial dioecious climber with apically bifid tendrils coiling above and below the branching point, compound leaves and a callus ring at the petiole base; fruit a crustose, truncate capsule, opening through the dissolution of the apical wall; seeds many, winged.

**Distribution:** A neotropical genus of 2 species distributed throughout most of Brazil, Ecuador, Peru, Bolivia, Paraguay and NW Argentina; moist or wet evergreen or deciduous forests; 100-710 m.

**TECUNUMANIA** Standley & Steyermark, Publ. Field Mus. Nat. Hist., Bot. Ser. 23: 96. 1944.

Dioecious, perennial vines, several meters long. Leaves simple, ovate-cordate and



*T. stotheriae*, ripe fruit with Saponin foam, photo by X. Cornejo

palmately 5-lobed; petiolate. Tendrils 2-(4-)fid. Flowers large, solitary. Receptacle-tube campanulate with five linear sepals; corolla yellow, rotate, with five obovate, petals that are fused at the base; stamens 3, inserted near the base of the tube,

filaments free but closely appressed, the anthers bitheous, connate into a globose head with triplicate thecae; ovary globose with many horizontal ovules, style elongated with 3 bilobed stigmata. Fruit fleshy, subglobose, 7-8 cm long, indehiscent, ripening dark green. Seeds many, 6-7 × 4-5 mm, compressed; testa pale yellowish brown, densely appressed hairy.

**Distinctive features:** Perennial dioecious climber with palmately 5-lobed leaves, large solitary yellow campanulate flowers and subglobose 7-8 cm long dark green pepo with pale yellowish brown seeds with densely appressed hairy testa.

**Distribution:** A neotropical genus of 2 species with disjunct distribution: *T. quetzalteca* Standl. & Steyermark. is known from Mexico, Guatemala and Costa Rica, while the recently described *T. stotheriae* Cornejo & H. Schaefer. is known from the western Andean slopes of Ecuador; wet montane forests; ca. 600-700 m.

**WILBRANDIA** Silva Manso, Enum. Subst. Brazil. 30. 1836.

Monoecious or dioecious, perennial vines, climbing or trailing, with woody rootstock.



*Wilbrandia longisepala*, young fruits, photo by P. Acevedo

Leaves simple, entire to palmately 3-7-lobed, petiolate. Tendrils simple. Flowers small and white; male flowers in racemes or spikes; female flowers solitary or in dense, 2-8 flowered, axillary clusters. Receptacle-tube green, 5-6 mm long, sepals 5,

lanceolate, 2-3 mm long; corolla yellowish, the 5 petals oblong to lanceolate, c. 3 mm long, fused at the base, papillose; stamens 3, inserted on the upper third of the tube, filaments very short, free, two anthers bithecaous, one monothealous, coherent into a central head, thecae straight; ovary ovoid-oblong, rostrate with two or three placentae and many, horizontal ovules, the style 2-3 mm long with 2 bifid stigmata or 3 simple ones. Fruit an ovoid-conical, slightly angled berry, ca. 2 × 1.5 cm, sessile in the leaf axils, rostrate. Seeds many, ovate to oblong, compressed, ca. 5 mm long with distinct margin, in small mucilaginous translucent pockets.

**Distinctive features:** Berries ovoid-conical, ca. 2 cm long, sessile in the leaf axils, rostrate.

**Distribution:** An eastern South American genus of 5 species distributed from NE Brazil south to W central and SE Brazil, Paraguay and northern Argentina; in rain forest and secondary scrubs; 600-1000 m.

#### **RELEVANT LITERATURE:**

Barth, O.M., Pinto da Luz, C.F. and V.L. Gomes-Klein. 2005. Pollen morphology of Brazilian species of *Cayaponia* Silva Manso (Cucurbitaceae, Cucurbiteae). Grana 44: 129-136.

- Belgrano, M.J. 2012. Estudio sistemático y biogeográfico del género *Apodanthera* Arn. (Cucurbitaceae). PhD thesis, Universidad Nacional de La Plata, Argentina.
- Belgrano, M.J. and R. Pozner. 2017. Synopsis of the genus *Apodanthera* (Cucurbitaceae, Coniandreae). *Darwiniana*, nueva serie 5: 5-50.
- Cogollo, A. and J.J. Pipoly III. 1995. Una nueva especie del género *Pteropepon* (Cucurbitaceae) de Colombia. *Sida* 16: 401-406.
- Condon, M.A. and L.E. Gilbert. 1988. Sex expression of *Gurania* and *Psiguria* (Cucurbitaceae): Neotropical vines that change sex. *Am. J. Bot.* 75: 875-884.
- Cornejo, X., Schaefer, H., and M.H. Nee. 2020. *Tecunumania stothertiae* (Cucurbitaceae): a new species from western Ecuador and a new generic record for South America. *Phytotaxa* 446(3): 199-204.
- Dieterle, J. V. A. 1974. A new geocarpic genus from Mexico: *Apatzingania* (Cucurbitaceae). *Brittonia* 26: 129-132.
- Duchen, P. and S.S. Renner. 2010. The evolution of *Cayaponia* (Cucurbitaceae): Repeated shifts from bat to bee pollination and long-distance dispersal to Africa 2-5 million years ago. *Am. J. Bot.* 97: 1129-1141.
- Filipowicz, N., Schaefer, H. and S.S. Renner. 2013. Revisiting *Luffa* (Cucurbitaceae) 25 Years after C. Heiser: species boundaries and application of names tested with plastid and nuclear DNA sequences. *Syst. Bot.* 39: 205-215.
- Gentry, A. 1950. Taxonomy and evolution of *Vaseyanthus*. *Madroño* 10: 142-155.
- Gentry, A. H. and R. H. Wettach. 1986. *Fevillea* - a new oil seed from Amazonian Peru. *Econ. Bot.* 40: 177-185.
- Gomes-Klein, V. L. 1998 ['1996']. *Cucurbitaceae* do estado do Rio de Janeiro: subtribo *Melothriinae* E.G.O. Muell et F.Pax. *Arq. Jard. Bot. Rio de Janeiro* 34: 93-172.
- Heiser, C.B. and E.E. Schilling. 1988. Phylogeny and distribution of *Luffa* (Cucurbitaceae) *Biotropica* 20: 185-191.
- Grayum, M.H. 2009. Two new trifoliolate-leaved species of Cucurbitaceae (Cucurbiteae) from Central and South America. *Novon* 19: 465-474.
- Heiser, C.B., Schilling E.E. and B. Dutt. 1988. The American species of *Luffa* (Cucurbitaceae). *Syst. Bot.* 13: 138-145.

- Holstein, N. 2015. Monograph of *Coccinia*. *Phytokeys* 54: 1-166.
- Jeffrey, C., 1962. The application of the generic names *Anguria* and *Elaterium* (Cucurbitaceae). *Kew Bull.* 16: 197-198.
- Jeffrey, C., 1962. Notes on some species of *Fevillea* L., *Siolmatra* Baill., and *Pseudosicydium* Harms (Cucurbitaceae) in the Amazon Basin. *Kew Bull.* 16: 199-202.
- Jeffrey, C. 1971. Further notes on Cucurbitaceae: 2. The tribe Cucurbiteae. *Kew Bulletin* 25: 191-236.
- Jeffrey, C. 1992. The genus *Apodanthera* (Cucurbitaceae) in Bahia state (Brazil). *Kew Bull.* 47: 517-528.
- Jeffrey, C. 1992. Names of the indigenous neotropical species of *Luffa* Mill. (Cucurbitaceae). *Kew Bull.* 47: 741-742.
- Jeffrey C. and B. Trujillo. *Cucurbitaceae* In G. Morillo (ed.), *Flora de Venezuela* 5: 21. 1992.
- Kates, H.R., Soltis, P.S. and D.E. Soltis. 2017. Evolutionary and domestication history of *Cucurbita* (pumpkin and squash) species inferred from 44 nuclear loci. *Molec. Phylog. Evol.* 111: 98-109.
- Kearns, D. M., 1992. A revision of *Sechiopsis* (Cucurbitaceae). *Syst. Bot.* 17: 395-408.
- Kearns, D. 1992. A revision of *Polyclathra* (Cucurbitaceae) in: *Biosystematics of Mexican Cucurbitaceae*. (pp. 170-258). Ph. D. Thesis, University of Texas.
- Kearns, D.M. 1994. The genus *Ibervillea* (Cucurbitaceae): an enumeration of the species and two new combinations. *Madroño* 41: 13-22.
- Khunwasi, C. 1998. Palynology of the Cucurbitaceae. Doctoral Dissertation Naturwiss. Fak., University of Innsbruck.
- Kocyan, A., Zhang, L.-B., Schaefer, H. and S.S. Renner. 2007. A multi-locus chloroplast phylogeny for the Cucurbitaceae and its implications for character evolution and classification. *Molec. Phylog. Evol.* 44: 553-577.
- Lira, S. R. 1991. Observaciones en el género *Sicana* (Cucurbitaceae). *Brenesia* 35: 19-59.
- Lira, R. and F. Chiang. 1992. Two new combinations in *Sechium* (Cucurbitaceae) from Central America, and a new species from Oaxaca, Mexico. *Novon* 2(3): 227.
- Lira R. 1995. A new species of *Sicydium* Schlechtendal (Cucurbitaceae: Zanonioideae, Zanonieae, Sicydiinae) for the Flora Mesoamericana. *Novon* 5: 284-286.

- Lira R., Alvarado J. L. and M. L. Ayala Nieto. 1998. Pollen morphology in *Sicydium* (Cucurbitaceae, Zanonioideae). Grana 37: 215-221.
- Martínez Crovetto, R. 1946. Nota taxonómica sobre *Wilbrandia sagittifolia* Griseb. (Cucurbitaceae). Bol. Soc. Argent. Bot. 1: 312-317.
- Martínez Crovetto, R. 1952. El género *Pteropepon* (Cucurbitaceae) en la República Argentina. Bol. Soc. Argent. Bot. 4: 177-182.
- Martínez Crovetto, R. 1954. Synopsis des Cucurbitacées de l'Uruguay. Notul. Syst. (Paris) 15: 47-55.
- Martínez Crovetto, R. 1954. Sur les organes femelles de quelques espèces du genre *Apodanthera* (Cucurbitaceae), Notul. Syst. (Paris) 15: 41-43.
- Martínez Crovetto, R. 1956. Especies nuevas o críticas del género *Apodanthera* (Cucurbitaceae) II. Bol. Soc. Argent. Bot. 6: 94-97.
- Mercado, P. and R. Lira. 1994. Contribución al conocimiento de los numeros cromosómicos de los generos *Sechium* P. Br. y *Sicana* Naudin (Cucurbitaceae). Acta Bot. Mexicana 27: 7-13.
- Mitchell, T.C., Dötterl, S. and H. Schaefer. 2015. Hawk-moth pollination and elaborate petals in Cucurbitaceae: The case of the Caribbean endemic *Linnaeosicyos amara*. Flora 216: 50-56.
- Monro, A. K. and P. J. Stafford. 1998. A synopsis of the genus *Echinopepon* (Cucurbitaceae: Sicyeae), including three new taxa. Ann. Missouri Bot. Gard. 85: 257-272. 1998.
- Murawski, D.A. and L.E. Gilbert. 1986. Pollen flow in *Psiguria warscewiczii*: a comparison of *Heliconius* butterflies and hummingbirds. Oecologia 68: 161-167.
- Nee, M., Schaefer, H. and S.S. Renner. 2010. The relationship between *Anisosperma* and *Fevillea* (Cucurbitaceae), and a new species of *Fevillea* from Bolivia. Syst. Bot. 34: 74-78.
- Pittier, H. 1922. The species of *Calycophysum*. Contrib. US. Natl. Herb. 20: 487-490.
- Robinson, G.L. and R.P. Wunderlin. 2005. Revision of *Siolmatra* (Cucurbitaceae: Zanonieae). Sida 21: 1961-1969.
- Pozner, R. 1998. Cucurbitaceae. Flora Fanerogámica Argentina. Fascículo 53. 275. Proflora (Conicet), Córdoba: 58 pp.



- Pozner, R. 1998. Revisión del género *Cucurbitella* (Cucurbitaceae). Ann. Missouri Bot. Gard. 85: 425-439.
- Pozner, R. 2004. A new species of *Echinopepon* from Argentina and taxonomic notes on the subtribe Cyclantherinae (Cucurbitaceae). Syst. Bot. 29: 599-608.
- Robinson, G. L. and R. P. Wunderlin. 2005. Revision of *Fevillea* (Cucurbitaceae: Zanonieae). Sida 21: 1971-1996.
- Rose, J. N. 1897. *Echinopepon* and its allies. Contr. U.S. Natl Herb. 5: 114-121.
- Sanjur, O.I., Piperno, D.R., Andres, T.C. and L. Wessel-Beaver. 2002. Phylogenetic relationships among domesticated and wild species of *Cucurbita* (Cucurbitaceae) inferred from a mitochondrial gene: Implications for crop plant evolution and areas of origin. Proc. Natl. Acad. Science 99: 535-540.
- Schaefer, H. and M.H. Nee. 2012. *Melothria domingensis* (Cucurbitaceae), an endangered Caribbean endemic, is a *Cayaponia*. Phytokeys 18: 45-60.
- Schaefer, H., Renner, S.S. 2010. A three-genome phylogeny of *Momordica* (Cucurbitaceae) suggests seven returns from dioecy to monoecy and recent long-distance dispersal to Asia. Molec. Phylog. Evol. 54: 553-560.
- Schaefer, H. and S.S. Renner. 2011a. Phylogenetic relationships in the order Cucurbitales and a new classification of the gourd family (Cucurbitaceae). Taxon 60: 122-138.
- Schaefer, H., Renner, S.S. 2011b. Cucurbitaceae. Pp. 112-174 in K. Kubitzki, ed., Families and Genera of Flowering Plants, Vol. 10. Springer Verlag, Berlin.
- Schaefer, H., Kocyan, A., and S.S. Renner. 2008. *Linnaeosicyos* (Cucurbitaceae), a new genus for the Caribbean sister group of the New World Sicyeae. Syst. Bot. 33: 349-355.
- Schaefer, H., Heibl, C., and S.S. Renner. 2009. Gourds afloat: a dated phylogeny reveals an Asian origin of the gourd family (Cucurbitaceae) and numerous oversea dispersal events. Proc. of the Royal Society B 276: 843-851.
- Sebastian, P., Schaefer, H., Lira, R., Telford, I.R.H., and S.S. Renner. 2012. Radiation following long-distance dispersal: The contributions of time, opportunity, and diaspore morphology in *Sicyos* (Cucurbitaceae). Journal of Biogeography 39: 1427-1438.

- Steele, P.R., Friar, L.M., Gilbert, L.E. and R.K. Jansen. 2010. Molecular systematics of the neotropical genus *Psiguria* (Cucurbitaceae): Implications for phylogeny and species identification. *Am. J. Bot.* 97: 156-173.
- Stocking, K. M. 1955. Some considerations of the genera *Echinocystis* and *Echinopepon* in the United States and northern Mexico. *Madroño* 13: 84-100.
- Whitaker, T.W. and G. W. Bohn. 1950. The taxonomy, genetics, production and uses of the cultivated species of *Cucurbita*. *Econ. Bot.* 4: 52-81.
- Wunderlin, R. P. 1976. Two new species and a new combination in *Frantzia* (Cucurbitaceae). *Brittonia* 28: 239-244.
- Wunderlin, R. P. 1978. Cucurbitaceae. Flora of Panama, part 9. *Ann. Missouri Bot. Gard.* 65: 285-368.

## PICTURE VOUCHERS

### Figure 1.

- A. *Cayaponia* sp. (Acevedo 17110).
- B. *Coccinia grandis* (no voucher).
- C. Cucurbitaceae, genus indet from Ecuador (no voucher).
- D. *Cayaponia* sp. from Acre, Brazil (no voucher).
- E. *Hamburia mexicana* (Acevedo 15967).
- F. *Momordica charantia* from Puerto Rico (no voucher)

### Figure 2.

- A. *Psiguria* sp. (Acevedo 16968).
- B. *Fevillea cordifolia* from Puerto Rico (no voucher).
- C. *Psiguria pedata* from Puerto Rico (no voucher).
- D. *Gurania* sp. from Panama (no voucher).

### Figure 3.

- A-D. Indet Cucurbitaceae (no voucher).

### Figure 4.

- A. *Psiguria pedata* (Amith 2395).
- B. *Fevillea pedatifolia* (Medeiros 1346).
- C. *Anisosperma pasiflora* (Acevedo 16886).
- D. *Wilbrandia* sp. (no voucher).
- E. *Lagenaria siceraria* (Acevedo 11421).
- F. *Gurania* sp. (Acevedo 13535).
- G. *Melothria sphaerocarpa* (no voucher).

### Figure 5.

- A. Indet Cucurbitaceae (no voucher).
- B. *Siolmatra* sp. from Mato Grosso do Sul, Brazil (no voucher).

C. *Cyclanthera langei* (Acevedo 16330).

Figure 6.

A. *Cyclanthera langei* (Acevedo 16330).

B. *Gurania lobata* (Acevedo 16997).

C. *Cayaponia oftálmica* from Acre, Brazil (no voucher).

D. *Sicydium* sp. from Ecuador (no voucher).

Figure 7.

A. *Cucurbita moschata* from Puerto Rico (no voucher).

B. *Anisosperma passiflora* (Acevedo 16886).

C. *Gurania* sp. from Panama (no voucher).

Figure 8.

A. *Cucumis anguria* from Puerto Rico (no voucher).

B. *Cucurbita okechobeensis* (Acevedo 16082).

C. *Fevillea cordifolia* (Acevedo 14269).

D. *Luffa aegyptiaca* from Dominican Republic (no voucher).

E. *Luffa aegyptiaca* (Acevedo 4066).

F. *Momordica charantia* from Puerto Rico (no voucher).

G. *Sicyos edulis* from Mexico (no voucher).