

# NEW TARAXACUM SPECIES AND FORMS FROM TURKEY

J. L. VAN SOEST

## SUMMARY

Descriptions of new taxa.

Sect. *Leptocephala* v. S.: *T. bessarabicum* (Horn.) H. M. ssp. *gumusanicum* v. S.; *T. anatolicum* v. S. with f. *stramineum* v. S.

Sect. *Spuria* DC.: *T. montanum* (C. A. M.) DC. f. *rubrofructum* v. S.

Sect. *Scariosa* H. M. em. Dahlst.: *T. hyberniforme* v. S.

Sect. *Orientalia* H. M.: *T. bellidiforme* v. S.; *T. crepidiforme* DC. ssp. *kurdicum* (H. M. ex Nábělek) v. S., nov. comb.

Sect. *Erythrocarpa* H. M. em. Dahlst., em. v. S.: *T. davisii* v. S.; *T. leucochlorum* v. S.; *T. phaleratum* Hagl. f. *brunneum* v. S.; *T. sieheanum* v. S.

Sect. *Erythrosperma* Dahlst. em. Lindb.: *T. aznavourii* v. S.; *T. hepaticolor* v. S. f. *erythrocarpum* v. S.; *T. pseudo-brachyglossum* v. S.; *T. turcicum* v. S.

## SECT. LEPTOCEPHALA V. S.

**T. bessarabicum** (Horn.) H.M. ssp. *gumusanicum* v. S., nov. ssp.

A *T. bessarabico* notis sequentibus diversum: achenia rufa, 6 mm longa (pyramide inclusa), rostrum 5–5,5 mm longum.

*Holotype*: Gümüsane: Aimene-bogas, in campis, *Freyn*, exsicc. *Sintenis* 7409 (BR).

**T. anatolicum** v. S. nov. spec.

Planta robusta, ca. 1 dm alta, valde araneosa, basi crassa.

Folia numerosa, ad 15 cm longa, coriacea, gramineo-viridia, sub apice ad 3,5 cm lata, in dimidio parte inferiore lobata; lobi laterales utrinque ca. 3, breves, ad 1 cm longi, triangulares, patentes, acuti, dorso dentato, margine inferiore integro; interlobia 1–1,5 cm longa, 2–10 mm lata, integra; lobus terminalis magnus, ad 8 cm longus, late lingulatus, dentatus, apice rotundatus, lobulis basalibus ca. 1 cm longis, acutis. Petiolis angustis,  $\pm$  pallidis.

Scapi numerosi, ad 20,  $\pm$  tenues, foliis breviores, araneosi, sub involucrio valde araneosi.

Involucrum mediocre, ca. 1 cm longum, 6 mm latum, basi subtruncatum, pallide viride. Squamae exteriores laxae adpressae, numerosae, lineari-lanceolatae, ad 4 mm longae, apice obscure purpureae, laeves; squamae interiores latiores, ca. 1 mm latae, apice obscurae, laeves.

Calathium paulo radians, ad 1,5 cm diametro, laete luteum. Ligulae marginales planae, extus stria perpallide griseo-violacea notatae. Antherae polliniferae. Stylus et stigmata laete lutea. Floret autumnno.

Achenium 5 mm longum, aurantiacum, sublaeve, in pyramidem conicam sensim abiens. Rostrum 3–4 mm longum, pappus rubellus, 4 mm longus.

*Holotype*: Anatolia or.: Agri, inter Agri (Karaköse) et Horasan, 54 km E Horasan, in jugo inter Zidikan et Velibaba, ca. 2500 m, 4-5 IX 1957, *Rechinger* 14988 (W).

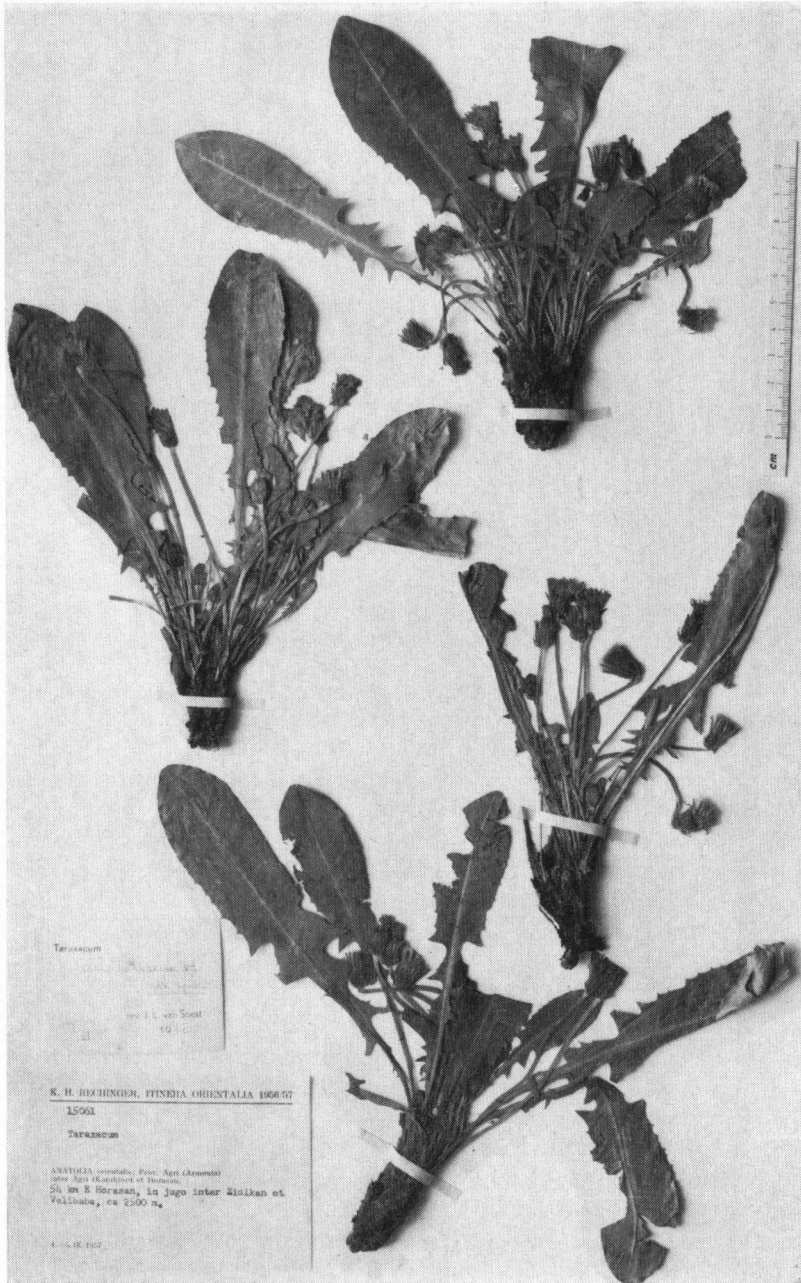


Fig. 1. *Taraxacum anatolicum* v. s. f. *stramineum* v. s.

**f. stramineum** v. S. nov. forma: achenia straminea.

*Holotype*: *ibid.*, *Rechinger* 15061 (W, h. v. S.). *Fig. 1.*

SECT. SPURIA DC.

**T. montanum** (C. A. M.) DC. f. **rubrofructum** v. S. nov. forma: achenia rubro-lateritia.

*Holotype*: cult. in horto bot. Delft, v. S. (h. 43385).

SECT. SCARIOSA H.M. EM. DAHLST.

**T. hyberniforme** v. S. nov. spec. *Fig. 2.*

Planta parva, 4–10 cm alta, gracilis, basi araneosa.

Folia canoviridia, subglabra vel glabra, lobata, petiolis pallidis instructa; lobi laterales utrinque ca. 3, deltoidei, acuti vel subacuti, ad 1 cm longi, basi ad 1 cm lati, dorso integro vel minute dentato vel denticulato; interlobia sat lata; lobus terminalis deltoideus, subacutus, mucronulatus. Folia in plantae juveniles vel in plantae parvae saepe valde parva, obtusa, minus vel non lobata, breviter dentata vel denticulata.

Scapi sub involucre araneosi.

Involucrum mediocre. Squamae exteriores laxe adpressae, ovatae, saepe late albo-marginatae, nervo mediano obscure nigro, omnes obscure callosae.

Calathium flavum. Ligulae marginales planae, extus stria canoviolacea ornatae. Antherae vacuae vel polliniferae. Stylus et stigmatibus fusco-virescentia. Floret autumnno (et vere?).

Achenium ca. 4 mm longum (pyramide inclusa), rubro-lateritium, grosse spinulosum, in pyramidem conico-cylindricam, 0,5 mm longam subabrupte abiens. Rostrum ca. 6 mm longum; pappus albus, 5 mm longus.

*Holotype*: Kouroutchechemén (Kuruceme); terrains vagues près du débarcadère (Istanbul), 7. XI. 1911, *Aznavour* (G).

The description of the achenes is taken from: Arnavutkeuy, trottoir le long du Palais, 7. XI. 1911, *Aznavour* (G).

SECT. ORIENTALIA H.M.

**T. bellidiforme** v. S. nov. spec.

Planta 5–10 cm alta, subaraneosa.

Folia canoviridia, ad 6 cm longa (petiolo angusto roseolo inclusa), obovata, subintegra vel minute denticulata, raro parcissime sinuoso-dentata.

Involucrum 11–13 mm longum, basi ovatum, obscure nigrum. Squamae exteriores adpressae, apice  $\pm$  patentibus, ovatae, ad 5 mm longae,  $\pm$  immarginatae,  $\pm$  ciliolatae, interiores pro parte subcallosae.

Calathium luteum, ad 2 cm diametro. Ligulae marginales planae, extus stria atropurpurea ornatae. Antherae vacuae. Stylus et stigmata fusco-virescentia.

Achenium ignotum, pappus albus.

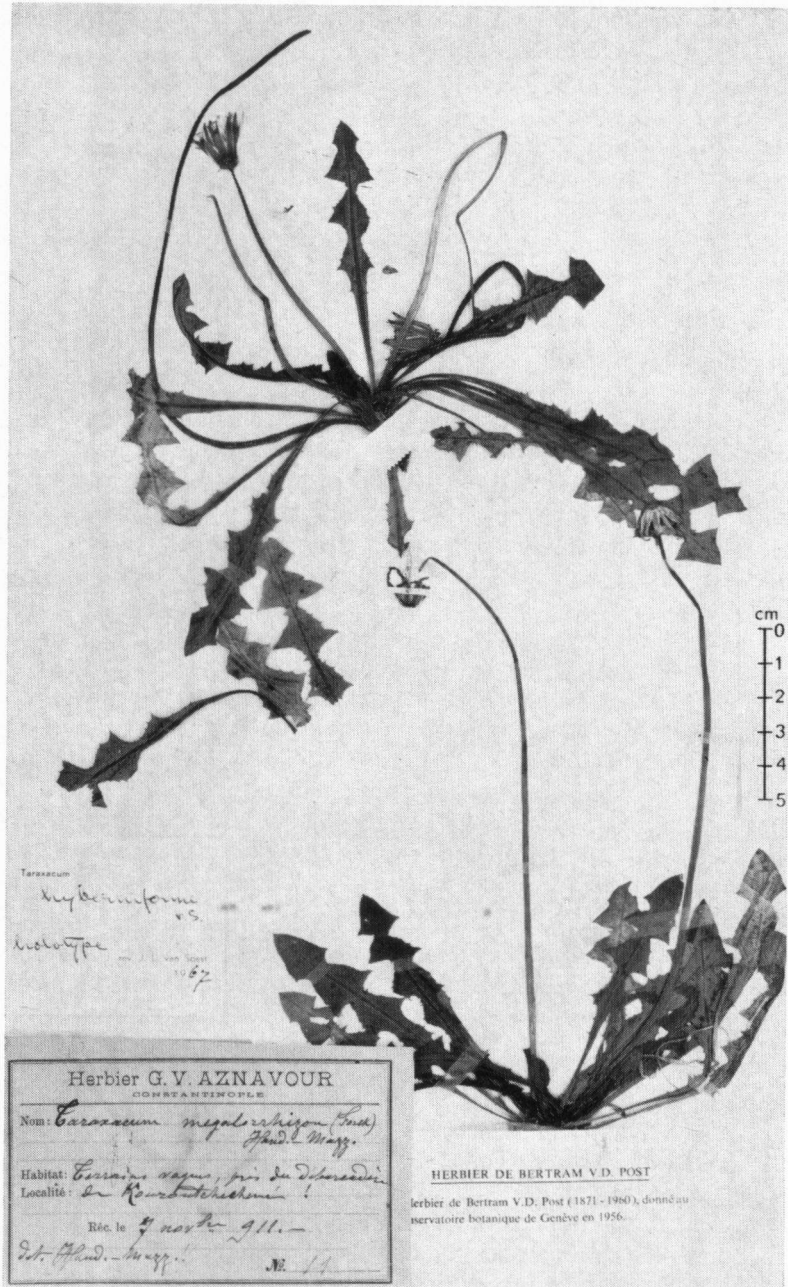


Fig. 2. *Taraxacum hyberniforme* v. S.

*Holotype*: Amasya: Erbaa-Catalan, 450 m, mixed open pine, clay and chips, March 25 1966, *Tobey* 1553 (E).

**T. crepidiforme** DC. ssp. **kurdicum** (H.M. ex Nábělek) v. S. nov. comb.; *T. kurdicum* H.M. ex Nábělek, in Publ. Fac. Sc. Univ. Masaryk 52 (1925) p. 52.

*Obs.* The length of the rostrum in *T. crepidiforme* varies from 3 to practically 0 mm, the latter case typical of *T. kurdicum*, which in other characters falls within the variability of *T. crepidiforme*.

SECT. ERYTHROCARPA H.M. EM. DAHLST., EM. V. S.

**T. davisii** v. S. nov. spec. *Fig. 3.*

Planta gracilis, ca. 2 dm alta, inferne paulo araneoso-pilosa, basi fragmentis foliorum veteriorum paulo incrassata.

Folia erecta, luteo-viridia, glabra, exteriora lanceolata vel anguste obovata, retroverso-denticulata, subobtusa, interiora lobata, petiolis laete purpureis instructa. Lobi laterales (utrinque ad 3) anguste triangulares, retroversi, ad 15 mm longi, peracuti, dorso magis dentato, margine inferiore saepe concavo, integro. Interlobia inconspicue evoluta, dentata. Lobus terminalis indistincte determinatus, ad 2,5 cm longus, incisus vel retroverso-dentatus denticulatusque, ± acutus, mucronulatus.

Scapi folia superantes, sub involucro araneosi.

Involucrum canoviride, 15 mm longum. Squamae exteriores apice paulo recurvae, ad 8 mm longae, ovatae, ad 3 mm latae, margine pallido lato instructae, ceterum viridi-punctatae, nervo mediano virido, interiores corniculatae ad breviter cornutae.

Calathium sat parvum, paulo radians, luteum. Ligulae marginales extus stria atro-violacea notatae. Antherae (parce?) polliniferae. Stylus et stigmata obscure virescentia.

Achenium rubro-lateritium, ca. 5 mm longum (pyramide inclusa), superne argute spinulosum, ceterum ± rugosum basi laeve, in pyramidem cylindricam, 1,5 mm longam abrupte abiens. Rostrum 10 mm longum. Pappus pallide brunescens, 6,5 mm longus.

A *T. androssovio* Schischkin notis sequentibus bene distinctum: petioli minus colorati; calathia minora; squamae exteriores angustiores; pappus paulo coloratus.

*Holotype*: Van: N. side of Erek Dağ, above Değirmenköy, 2300 m, wet meadow, 6.6.1966, *Davis* 44466 (E).

**T. leucochlorum** v. S. nov. spec. *Fig. 4.*

Planta gracilis, ca. 2 dm alta, basi araneosa.

Folia gramineo-viridia, lobata, petiolis angustis, vinoso-coloratis instructa. Lobi laterales (utrinque 4) late lingulati vel triangulares, ad 13 mm longi, subacuti, paulo retroversi ad patentes, dorso convexo interdum 1 dente munito, margine inferiore integro; interlobia sat lata (3–5 mm), ad 5 mm longa, interdum 1 dente munita; lobus terminalis deltoideus, 1–2 cm longus, subobtusus, integer.

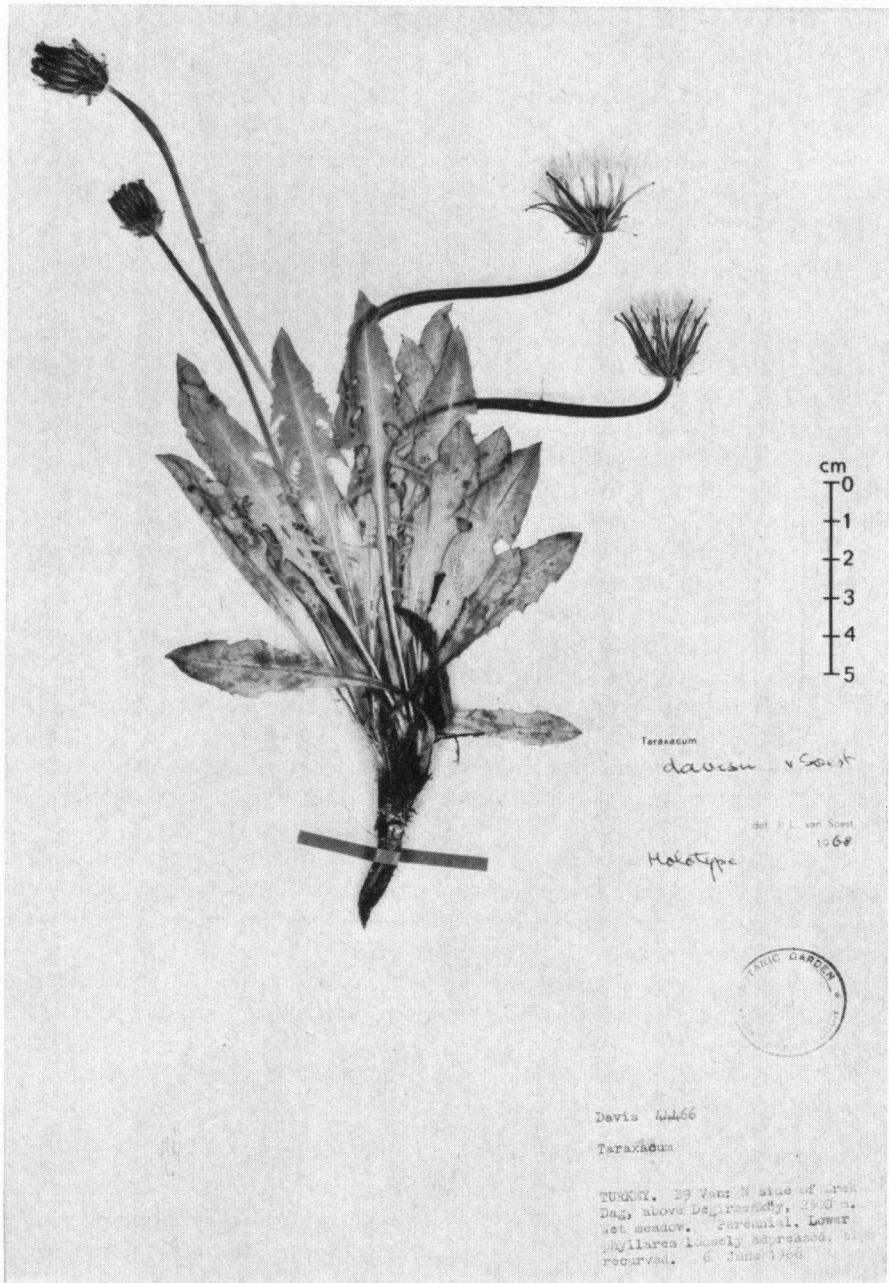


Fig. 3. *Taraxacum davisii* v. S.

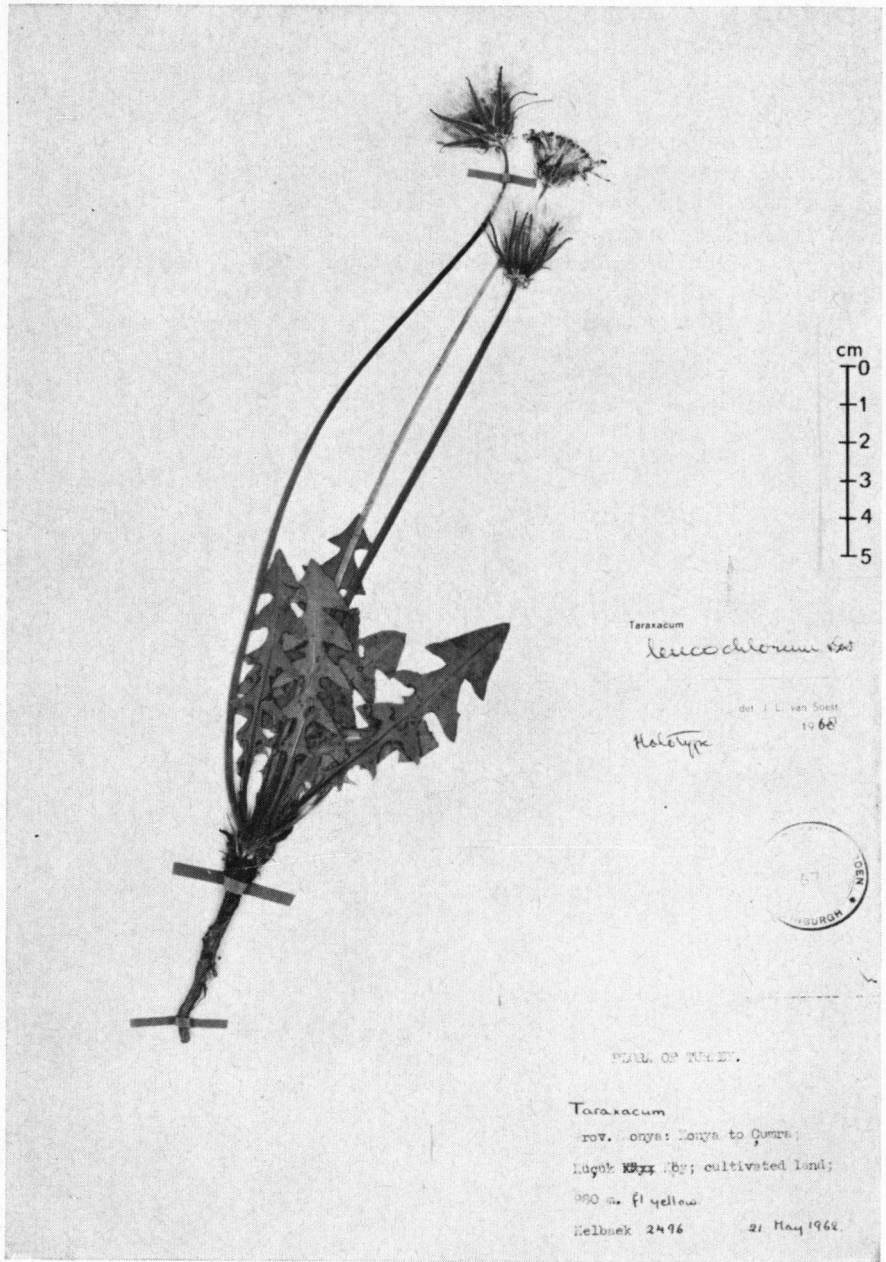


Fig. 4. *Taraxacum leucochlorum* v. S.



Scapi folia superantes, paulo araneosi.

Involucrum pallide viride, ca. 13 mm longum; squamae exteriores ovatae, abrupte vel subabrupte acuminatae, latissime alboviride marginatae, apice recurvae, roseolae, inconspicue callosae.

Calathium paulo radians, ad 3 cm diametro. Ligulae marginales sat breves, laete luteae, extus stria atrovioleacea ornatae. Antherae polliniferae. Stylus et stigmata (siccitate) nigra. Floret vere.

Achenium stramineum, 5 mm longum (pyramide inclusa), late spinulosum basi rugosum, in pyramidem cylindricam 1,4 mm longam, spinulis praeditam sensim abiens. Rostrum ca. 10 mm longum; pappus albus, 6 mm longus.

*Holotype*: Konya: Konya to Çumra; Küçük Köy; cultivated land, 980 m, 21.5.1962, *Helbaeck* 2496 (E).

**T. phaleratum** Hagl. f. **brunneum** v. S. nov. forma: achenia pallide brunnea.

*Holotype*: Ankara: Oludjak, 14.5.1907, Frères *E.C.* (herb. Aznavour, G).

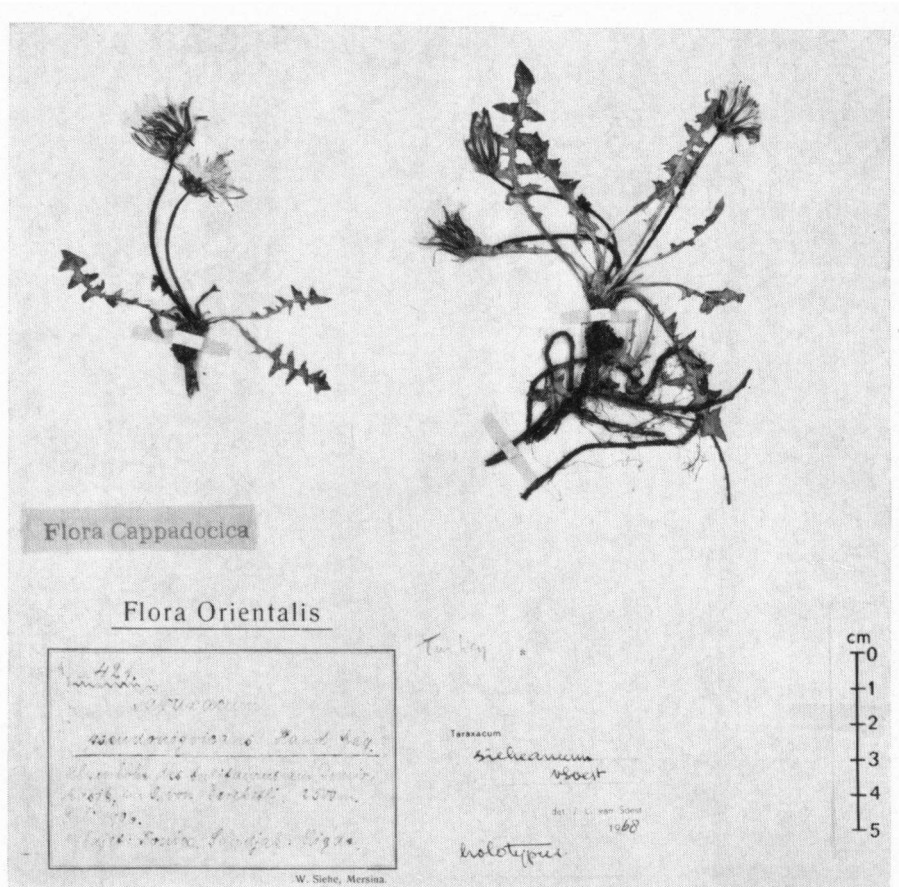


Fig. 5. *Taraxacum sieheanum* v. S.



**T. sieheanum** v. S. nov. spec. *Fig. 5.*

Planta 4–10 cm alta, basi crassa, araneosa.

Folia luteo-viridia, lobata, petiolis angustis pallidis (?) instructa. Lobi laterales ad 7 mm longi, breves, late lingulati vel triangulares, dorso convexo,  $\pm$  denticulato, margine inferiore saepe convexo, integro; interlobia 0–3 mm longa, saepe denticulata vel breviter dentata; lobus terminalis  $\pm$  deltoideus, ad 1 cm longus, ad 1,2 cm latus, subinteger.

Scapi parcissime araneosi, florendi tempore foliis aequilongi.

Involucrum ca. 14 mm longum, basi ovatum. Squamae exteriores ovatae, acuminatae, adpressae vel laxe patentis, pallide virides, inconspicue viridimarginatae, apice obscuriores, subcallosae. Squamae interiores virides, laeves.

Calathium luteum, radians, ad 3,5 cm diametro. Ligulae marginales planae, extus stria atroviolacea notatae. Stylus et stigmata nigrescentia. Antherae polliniferae. Floret aestate.

Achenium aurantiacum, 6 mm longum (pyramide inclusa), superne argute spinulosum ceterum rugosum, in pyramidem cylindricam, 1,3 mm longam (spinulis saepe praeditam) subabrupte abiens. Rostrum 6–7 mm longum; pappus niveus, 5,5 mm longus.

*Holotype*: Niğde: Alpenhöhe des Antitaurus, Demirkasik, östlich von Baretbi, 2500 m, Juli 1906, *Siehe* 421 (E).

## SECT. ERYTHROSPERMA DAHLST. EM. LINDB. F.

**T. aznavourii** v. S. nov. spec. *Fig. 6.*

Planta gracilis, ca. 1 dm alta, basi araneosa.

Folia gramineo-viridia, inferne parce araneosa, lobata, petiolis angustis roseis instructa. Folia exteriora utrinque 2–3 lobis instructa, lobi laterales triangulares, saepe paulo dentati, lobus terminalis hastatus, subobtusus. Folia interiora multilobata, lobi laterales patentis, triangulares vel unguiculati, ad 1,5 cm longi, acuti, dorso saepe convexo, grosse dentato, margine inferiore saepe 1 dente munito; interlobia grosse triangulariter dentata; lobus terminalis parvus,  $\pm$  deltoideus, ca. 1 cm longus, acutus vel subacutus, lobulis basalibus triangularibus, acutis.

Scapi sub involucre araneosi, floriferi foliis subaequilongi.

Involucrum mediocre, 12 mm longum. Squamae exteriores lanceolatae, recurvae, inconspicue marginatae, omnes ecallosae.

Calathium luteum. Ligulae marginales extus stria atroviolacea notatae. Antherae polliniferae. Stylus et stigmata fusco-virescentia.

Achenium stramineum, 3,5 mm longum (pyramide inclusa), superne minute breviterque spinulosum, ceterum laeve, in pyramidem cylindricam, 0,8–1,0 mm longam abrupte abiens. Rostrum 7 mm longum; pappus albus, 3,5 mm longus.

*Holotype*: Büyükdere, Sultansou, 31.X.1911, *Aznavour* (G).

**T. hepaticolor** v. S. f. **erythrocarpum** v. S. nov. forma: Achenia obscure rubrolateritia.

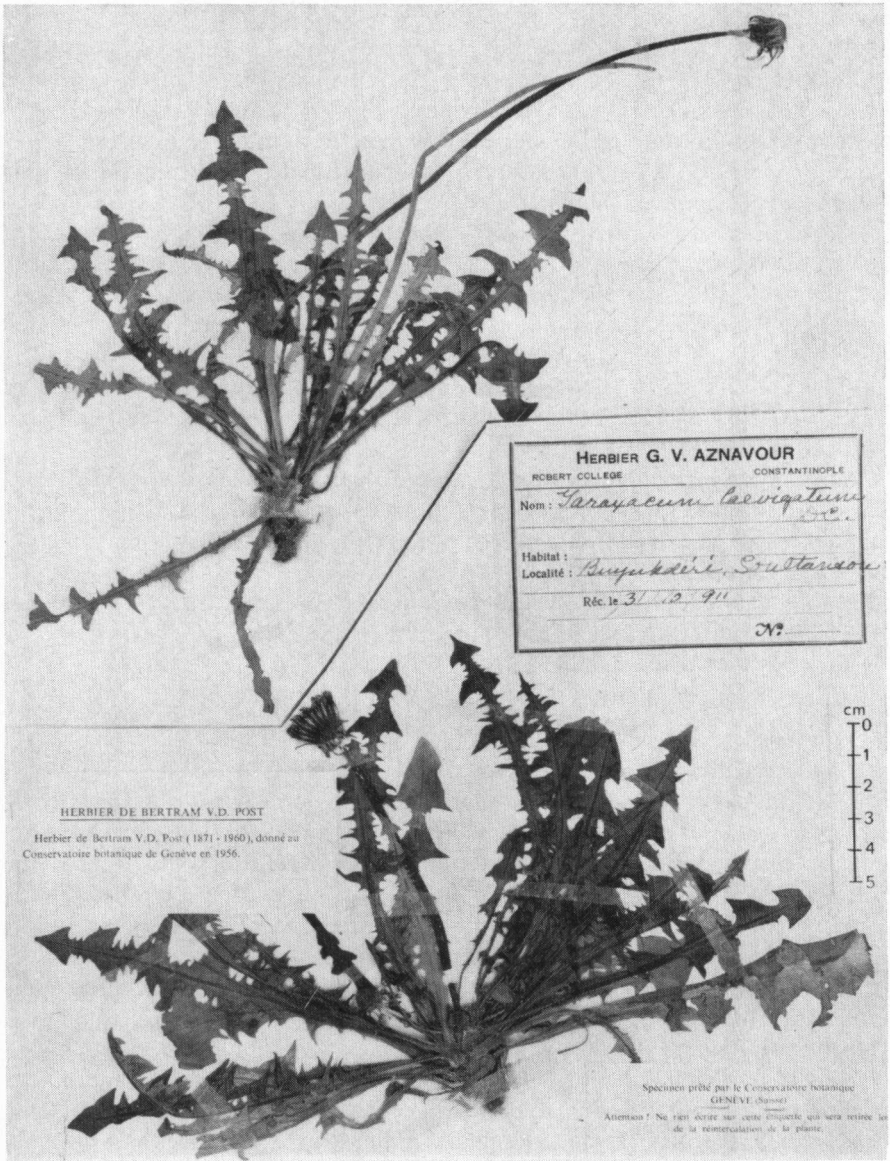


Fig. 6. *Taraxacum aznavourii* v. S.

*Holotype*: Kayseri: Pinarbasi to Gürün, near Ziyaret Tepesi, 1900 m, limestone gravel, *Coode & Jones* 1369 (E).

**T. pseudo-brachyglossum** v. S. nov. spec. Fig. 7.

Planta gracilis, 1–1,5 dm alta, basi araneosa.

NEW TARAXACUM SPECIES AND FORMS FROM TURKEY



Fig. 7. *Taraxacum pseudo-brachyglossum* v. S.

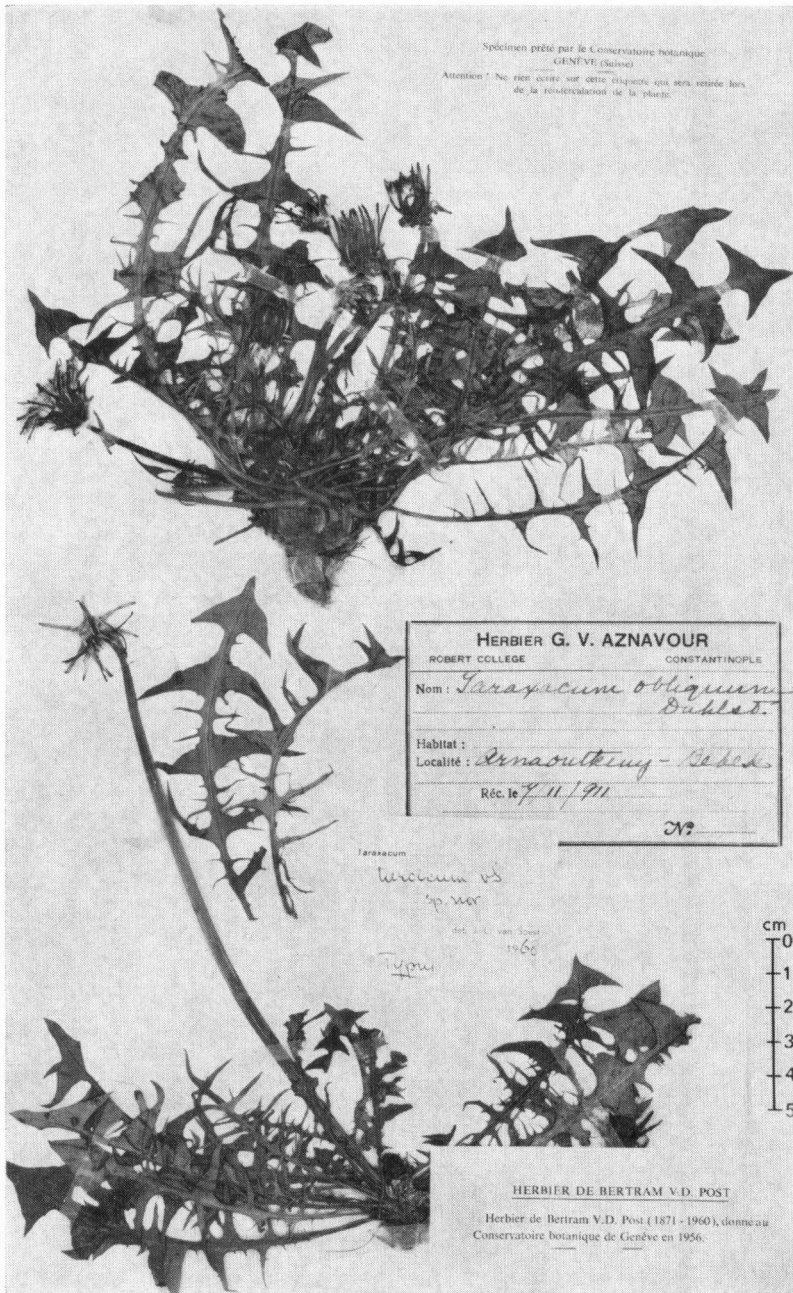


Fig. 8. *Taraxacum turcicum* v. S.

Folia inferne  $\pm$  araneosa, petiolis subangustis, purpureis instructa. Folia exteriora obovata, ad 2,5 cm lata, retroverso-dentata; folia interiora utrinque 3-4 lobi; lobi laterales triangulares, retroversi, 1-2,5 cm longi, subacuti,  $\pm$  denticulati vel plerumque integri vel inferiores minute dentati, dorso recto vel convexo, in interlobiis ca. 3 mm latis, ad 5 mm longis, integris vel denticulatis, interdum piceo-marginatis abeuntibus; lobus terminalis sagittatus, interdum incisus, ad 2,5 cm longus, obtusus vel apice breviter lingulatus.

Scapi sub involucri araneosi.

Involucrum mediocre, 11-13 mm longum. Squamae exteriores patentes, apice recurvae, ovatae, anguste albo-marginatae, omnes pro parte callosae.

Calathium luteum. Ligulae marginales extus stria atroviolacea notatae. Antherae minute-polliniferae. Stigmata subnigra.

Achenium stramineum, 5 mm longum (pyramide inclusa), superne argute spinulosum, ceterum rugosum basi laeve, in pyramidem cylindricam sat latam, 1,5 mm longam (spinulis praeditam) subsensim abiens. Rostrum 8 mm longum; pappus albus, 5 mm longus.

*Holotype*: Yenitchaïr (Fatik), 1914, *Aznavour* (G).

**T. turcicum** v. S. nov. spec. *Fig. 8.*

Planta gracilis, 8-10 cm alta, basi crassa, araneosa.

Folia inferne araneosa, graminea-viridia, lobata, petiolis angustis, dilute purpureis instructa. Lobi laterales utrinque ca. 4, falcati vel anguste triangulares, acutissimi, ad 3 cm longi, dorso et margine inferiore dentato; interlobia 1-1,5 cm longa, longissime subulato-dentata; lobus terminalis breviter sagittatus vel  $\pm$  deltoideus, ca. 2 cm longus, ad 2,5 cm latus, acutus, lobulis basalibus patentibus vel recurvis, acutis.

Scapi sub involucri araneosi, floriferi foliis breviores.

Involucrum 13-15 mm longum. Squamae exteriores laxae adpressae, denique recurvae, lanceolatae vel anguste ovatae, viridi-marginatae, apice violaceae, pro parte parce callosae.

Calathium luteum. Ligulae marginales extus stria atroviolacea notatae. Antherae polliniferae. Stylus et stigmata fusco-virescentia, siccitate subnigra.

Achenium stramineum, 5 mm longum (pyramide inclusa), superne spinulosum, ceterum rugosum basi laeve, in pyramidem cylindricam, 1,2 mm longam (spinulis praeditam) subsensim abiens. Rostrum 9-10 mm longum. Pappus albus, 4-4,5 mm longus.

*Typus*: Arnavutkeuy-Bebek, 7.XI.1911, *Aznavour* 5 (G).