

RARE NATIVE PLANTS OF RHODE ISLAND – September, 2007

Prepared by
Richard W. Enser
Rhode Island Natural Heritage Program
Rhode Island Department of Environmental Management
Providence, Rhode Island 02908

The flora of Rhode Island includes roughly 1,700 plant taxa of which approximately 1,300 (77%) are considered to be native. The following list identifies those members of the native flora which are the rarest in Rhode Island and most in need of conservation. All taxa listed herein are currently being tracked by the Rhode Island Natural Heritage Program through comprehensive mapping and computerized databases maintained by the Rhode Island Natural History Survey. Information regarding the location and status of rare elements, including plants, animals and natural communities, is used to establish priorities for land preservation and to provide guidance within the environmental review process.

The Rhode Island Natural Heritage Program was established in 1978. During the first year of operation an initial listing of rare plants was derived from two previously published lists: *Endangered Plants of Rhode Island*, by Dr. Irene Stuckey; and *Rare and Endangered Vascular Plant Species in Rhode Island*, by Dr. George L. Church and Richard L. Champlin. The latter publication was the Rhode Island contribution to a regional assessment of rare plants prepared by the New England Botanical Club in cooperation with the U.S. Fish and Wildlife Service. More recently, the New England Plant Conservation Program (NEPCoP - established in 1991) conducted an exhaustive reassessment of the region's flora in preparation of *Flora Conservanda: New England - the NEPCoP list of plants in need of conservation*. This list, published in 1996, provides a regional perspective to the Rhode Island list, and a clear picture of regional conservation priorities.

Since 1978, the Natural Heritage Program has gathered information from many sources, particularly herbaria, published reports, and botanical field notes to refine the Rhode Island state list. The author, along with several other professional and amateur botanists, has also spent considerable time verifying the locations and identities of rare plants throughout the state. This combined effort has made the Natural Heritage Program's database the largest repository of rare plant information in Rhode Island.

The rare plant list is amended periodically to reflect the most up-to-date knowledge of plant distribution, status, and taxonomy. Although the number of plants on the rare list has remained relatively constant, certain species have been deleted when found to be more common or less vulnerable to extirpation than originally thought, while others have been added following similar status assessment, or when newly discovered in Rhode Island. (These may be new colonizers or may have been overlooked in the past.) The September 2007 edition of the *Rare Native Plants of Rhode Island* includes 321 plants, or approximately 25% of the state's native flora. These figures reflect an increase of 12 plants since the last edition of January, 2002.

ABOUT THIS LIST

The list is arranged alphabetically by botanical family, genus, and species. Trinomials are used to describe certain subspecies and varieties.

Nomenclature

The taxonomic authority for scientific names is:

Gould, L.L., R.W. Enser, R.L. Champlin, and I.S. Stuckey. 1998. *Vascular Flora of Rhode Island: A list of Native and Naturalized Plants*. Volume 1 of The Biota of Rhode Island project. Rhode Island Natural History Survey, Kingston, RI.

Copies of Gould, *et.al.* are available from: Rhode Island Natural History Survey
Room 101, the Coastal Institute in Kingston
1 Greenhouse Road
University of Rhode Island
Kingston, RI 02881-0804

In some cases, the names of plants have been updated to reflect current taxonomic revisions since the publication of Gould et al. in 1998. Taxa with updated names are identified by (#) and a list of synonyms for these plants is outlined in Appendix I.

Extant Populations

The number cited refers to populations known to be extant since 1985. (There are a few instances of populations being destroyed after this date, and these are not included in the count.) The number of distinct populations of some species, especially aquatics, is often difficult to determine. Population numbers for these species are based on the assumption that occurrences within the same reach of a river, or separate portions of a pond, lake, or other contiguous wetland system are considered one population.

Status

The status of each species is designated by letter codes as defined below:

(FE) Federally Endangered. (1 RI species currently listed)

(FT) Federally Threatened. (2 RI species currently listed)

(SE) State Endangered. Native taxa in imminent danger of extirpation from Rhode Island. These taxa may meet one or more of the following criteria:

1. A taxon formerly considered by the U.S. Fish & Wildlife Service for listing as Federally endangered or threatened. These species were identified as **C2** (Category 2) taxa for which information indicated that proposing to list under the Federal Endangered Species Act was potentially appropriate, but for which sufficient data on biological vulnerability and threat were not currently available to support proposed rules. The US Fish & Wildlife Service is currently not designating Category 2 species.
2. A taxon with 1 or 2 known or estimated total populations in the state.
3. A taxon apparently globally rare or threatened, estimated to occur at approximately 100 or fewer sites range-wide.

Plants listed as State Endangered are protected under the provisions of the Rhode Island State Endangered Species Act, Title 20 of the General Laws of the State of Rhode Island. This law states, in part (20-37-3):

"No person shall buy, sell, offer for sale, store, transport, import, export, or otherwise traffic in any animal or plant or any part of any animal or plant whether living or dead, processed, manufactured, preserved or raw (if) such animal or plant has been declared to be an endangered species by either the United States secretaries of the Interior or Commerce or the Director of the Rhode Island Department of Environmental Management."

(ST) State Threatened. Native taxa which are likely to become State Endangered in the future if current trends in habitat loss or other detrimental factors remain unchanged. In general, these taxa have 3-5 known or estimated populations and are especially vulnerable to habitat loss.

(C) Concern. Native taxa not considered to be State Endangered or Threatened at the present time, but are listed due to various factors of rarity and/or vulnerability.

(SH) State Historical. Native taxa which have been documented for Rhode Island during the last 150 years but for which there are no extant populations. When known, the year of last documented occurrence is included.

Note on Status Designation:

For most listed plants the definitions outlined above have been adhered to when assigning status. In some cases, especially for those species which have not received intensive field inventory, the "Concern" category is assigned even if only 1-2 populations are known to be extant. These species are targeted for additional inventory and may be assigned to other categories when their actual status in Rhode Island has been clarified. Taxa so-defined are designated with an asterisk (*).

Global Rank

Each taxon has been assigned a "global rank" that reflects its rarity and vulnerability to extinction throughout the world. Global ranks were originally derived by The Nature Conservancy and are used by all Natural Heritage Programs as a standardized method of determining the status of each taxon throughout its range. These ranks are defined as follows:

- G1 = Critically imperiled throughout its range due to extreme rarity (5 or fewer sites or very few remaining individuals) or extremely vulnerable to extinction due to biological factors.
- G2 = Imperiled throughout its range due to rarity (6-20 sites or few remaining individuals) or highly vulnerable to extinction due to biological factors.
- G3 = Either very rare and local throughout its range (21-100 sites), with a restricted range (but possibly locally abundant), or vulnerable to extinction due to biological factors.
- G4 = Apparently secure throughout its range (but possibly rare in parts).
- G5 = Demonstrably secure throughout its range (but possibly rare in parts).
- GH = No extant sites known, but may be rediscovered.
- GX = Believed to be extinct.
- T = Amended to a G rank to indicate status of a subspecies or variety

Double Ranks (e.g., G2G3): The first rank indicates rarity based on current documentation. The second rank indicates the probable rarity after all historical records and potential habitats have been surveyed. Denotes taxa needing additional survey to assign global status.

NEPCoP Status

Designation indicates the taxon is cited in *Flora Conservanda: New England. The New England Plant Conservation Program (NEPCoP) List of Plants in Need of Conservation*. Taxa included in this publication are assigned to one of 5 Divisions based on the following definitions:

- Div 1: Globally rare taxa occurring in New England. Taxa in this division have been ranked as globally rare (G1 through G3, or T1 through T3) under criteria described above.
- Div 2: Regionally rare taxa with fewer than 20 current occurrences within New England.
- Div 3: Locally rare taxa that may be common in part of New England, but have one or more occurrences of biological, ecological, or possible genetic significance.
- Div 4: Historic taxa that once existed in New England, but have not been seen since 1970.
- IND: Indeterminate taxa under review for inclusion in one of the above divisions, but issues of taxonomy, nomenclature, or status in the wild are not clearly understood.

County of Occurrence

Each county is designated by the first two letters of its name as follows:

PR = Providence; BR = Bristol; KE = Kent; NE = Newport; WA = Washington. In addition, Block Island (actually part of Washington County) is designated by the letters BI. Counties are identified for extant populations only, except in the case of Historic species in which the last county of occurrence is given.

FUTURE REVISIONS

The listing of rare species is an ongoing process requiring annual revisions to reflect the best scientific information available concerning the circumstances of rarity, as well as our increased knowledge of the native flora. Submission of additional data on species currently listed, or on other species which may warrant listing, is encouraged. Information should be sent to the Rhode Island Natural History Survey.

Room 101, the Coastal Institute in Kingston
1 Greenhouse Road
University of Rhode Island
Kingston, RI 02881-0804

Records can be submitted electronically via the RI Natural History Survey website at www.rinhs.org

ACKNOWLEDGMENTS

Many people have shared their knowledge of the Rhode Island flora, helping me to provide the most complete assessment of rare plants in the state. In particular I would like to thank the following individuals: William E. Brumback, Caren A. Caljouw, Richard L. Champlin, Gilbert George, Lisa L. Gould, Arthur Haines, Julie Lundgren, Les Mehrhoff, Joanne Michaud, William Nichols, Christopher Raithe, Thomas Rawinski, Bruce Sorrie, Irene Stuckey, Gordon Tucker and Frances Underwood. In addition, monitoring of rare plant populations would not be possible without the help of the many volunteers associated with the NEPCoP (New England Plant Conservation Program) Plant Conservation Volunteers (PCVs), coordinated by the New England Wild Flower Society.

Rhode Island Rare Plant Statistics:

Figure 1. Number of rare plant taxa by state status code. C = Concern, ST = State Threatened, SE = State Endangered, SH = State Historic

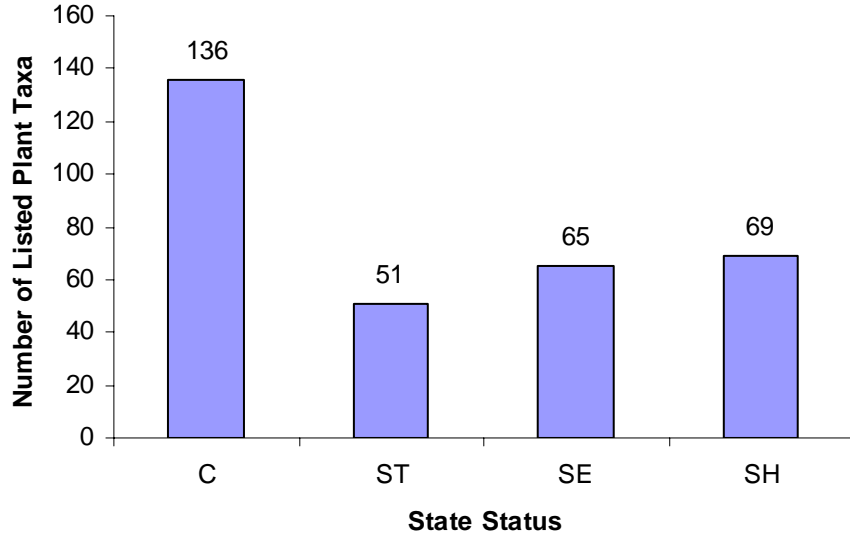


Figure 2. Number of rare plant taxa by global rank. G1-G3 = Critically Imperiled, Imperiled, & Vulnerable, G4 = Secure, G5 = Demonstrably Secure

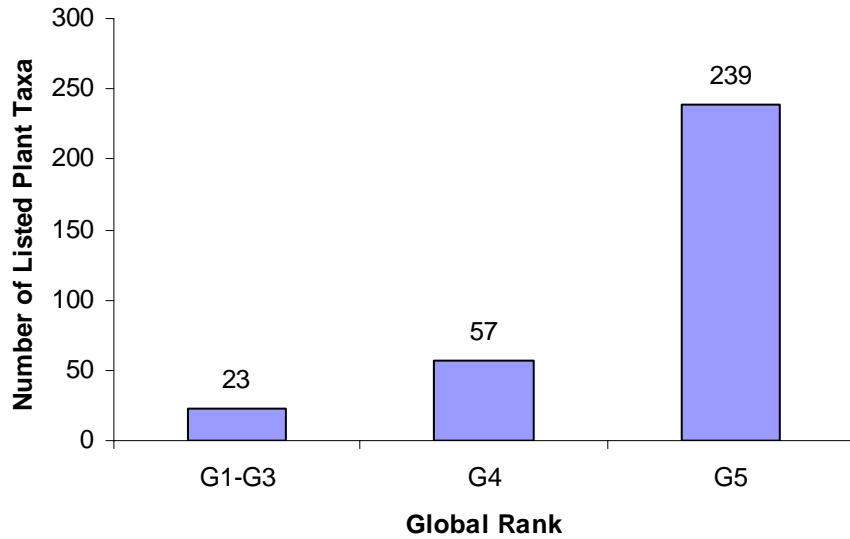
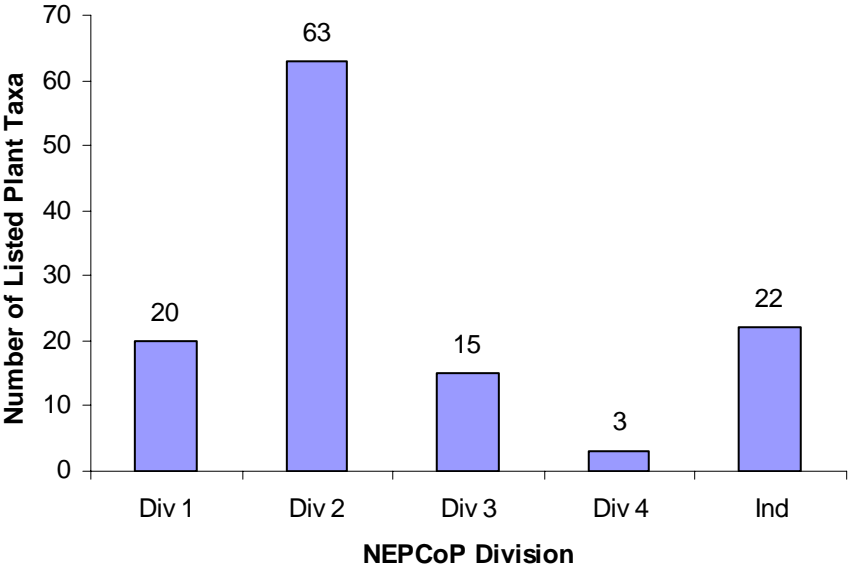


Figure 3. Number of rare plant taxa by NEPCoP Division. Div 1 = Globally rare taxa occurring in New England, Div 2 = Regionally rare, Div 3 = Locally rare, Div 4 = Historic, Ind = Indeterminate taxa, under review.



<u>Species</u>	<u>Common Name</u>	<u>Extant Pop</u>	<u>Counties of Occurrence</u>	<u>State Status</u>	<u>Global Rank</u>	<u>NEPCoP List</u>
<u>PTERIDOPHYTES</u>						
Aspleniaceae (Spleenwort Family)						
<i>Asplenium montanum</i>	Mountain Spleenwort	1	PR	SE	G5	Div 2
<i>Asplenium rhizophyllum</i>	Walking Fern	1	PR	SE	G5	
<i>Asplenium trichomanes</i>	Maidenhair Spleenwort	9	PR;KE;WA	C	G5	
Equisetaceae (Horsetail Family)						
<i>Equisetum fluviatile</i>	Water Horsetail	3	PR;WA	C	G5	
<i>Equisetum hyemale</i> ssp. <i>affine</i>	Rough Horsetail	7	PR;KE;WA	C	G5T5	
<i>Equisetum scirpoides</i>	Dwarf Scouring Rush	1	KE	SE	G5	
<i>Equisetum sylvaticum</i>	Woodland Horsetail	10	PR;BR;WA	C	G5	
Dryopteridaceae (Wood Fern Family)						
<i>Gymnocarpium dryopteris</i>	Oak Fern	3	PR;KE	ST	G5	
<i>Matteuccia struthiopteris</i> #	Ostrich Fern	5	PR;KE	C	G5	
<i>Woodsia ilvensis</i>	Rusty Woodsia	0 (1977)	PR	SH	G5	
Isoetaceae (Quillwort Family)						
<i>Isoetes echinospora</i>	Spiny Quillwort	2	PR;KE	C	G5	Div 2 IND
<i>Isoetes engelmannii</i>	Engelmann's Quillwort	2	PR;KE	C	G4	
<i>Isoetes riparia</i>	River Quillwort	4	PR;KE	C	G5	
<i>Isoetes x eatonii</i>	Eaton's Quillwort	0 (1942)	PR	SH	G2	
Lycopodiaceae (Clubmoss Family)						
<i>Lycopodiella alopecuroides</i>	Foxtail Clubmoss	3	PR;KE;WA	SE	G5	Div 2
<i>Lycopodium annotinum</i>	Stiff Clubmoss	1	PR	SE	G5	
Ophioglossaceae (Adder's-tongue Family)						
<i>Botrychium. angustisegmentum</i> #	Triangle Grape-fern	2	PR;KE	C	G5	IND Div 3
<i>Botrychium matricariifolium</i>	Daisyleaf Grape-fern	4	PR;KE	C	G5	
<i>Botrychium oneidense</i>	Leathery Grape-fern	0 (1899)	PR	SH	G5	
<i>Ophioglossum pusillum</i>	Northern Adder's-tongue	1	WA	SE	G5	
Pteridaceae (Maidenhair Fern Family)						
<i>Pellaea atropurpurea</i>	Purple Cliff-brake	1	PR	SE	G5	
Schizaeaceae (Curly-grass Fern Family)						
<i>Lygodium palmatum</i>	Climbing Fern	6	PR;KE;WA	C	G4	
Thelypteridaceae (Marsh Fern Family)						
<i>Phegopteris connectilis</i>	Long Beech Fern	3	PR;KE	ST	G5	
<u>GYMNOSPERMS</u>						
Taxaceae (Yew Family)						
<i>Taxus canadensis</i>	Ground Hemlock	3	PR	C	G5	
Pinaceae (Pine Family)						
<i>Larix laricina</i>	American Larch	3	PR;KE	ST	G5	
<i>Picea mariana</i>	Black Spruce	9	PR;KE	C	G5	

<u>Species</u>	<u>Common Name</u>	<u>Extant Pop</u>	<u>Counties of Occurrence</u>	<u>State Status</u>	<u>Global Rank</u>	<u>NEPCoP List</u>
<u>ANGIOSPERMS</u>						
Aceraceae (Maple Family)						
<i>Acer pensylvanicum</i>	Striped Maple	4	PR	C	G5	
<i>Acer spicatum</i>	Mountain Maple	1	PR	ST	G5	
Alismataceae (Water-Plantain Family)						
<i>Sagittaria graminea</i>	Grass-leaved Arrowhead	4	KE;WA	C	G5	
<i>Sagittaria subulata</i>	River Arrowhead	0 (1895)	PR	SH	G4	Div 2
<i>Sagittaria teres</i>	Slender Arrowhead	3	WA	SE	G3	Div 1
Amaranthaceae (Amaranth Family)						
<i>Amaranthus pumilus</i>	Seabeach Amaranth	0 (1897)	NE	FT/SH	G2	Div 4
Apiaceae (Parsley Family)						
<i>Angelica atropurpurea</i>	Large Angelica	1	PR	SE	G5	
<i>Angelica lucida</i>	Seaside Angelica	3	WA;BI	ST	G5	IND
<i>Cryptotaenia canadensis</i>	Honewort	5	PR	C	G5	
<i>Hydrocotyle verticillata</i>	Saltpond Pennywort	0 (1895)	BI	SH	G5	Div 2
<i>Ligusticum scoticum</i>	Scotch Lovage	10	NE;WA	C	G5	
<i>Lilaeopsis chinensis</i>	Lilaeopsis	1	PR	SE	G5	Div 3
<i>Osmorhiza longistylis</i>	Anise-root	3	PR;KE	ST	G5	
<i>Ptilimnium capillaceum</i>	Mock Bishop's Weed	7	NE;WA;BI	C	G5	
<i>Taenidia integerrima</i>	Yellow Pimpernel	0 (1886)	PR	SH	G5	Div 2
<i>Zizia aptera</i>	Heart-leaved Golden Alexanders	0 (1920)	WA	SH	G5	Div 2
Araceae (Arum Family)						
<i>Orontium aquaticum</i>	Golden Club	1	WA	SE	G5	
Araliaceae (Ginseng Family)						
<i>Aralia racemosa</i>	Spikenard	5	PR;KE	C	G5	
<i>Panax quinquefolius</i>	American Ginseng	1	PR	SE	G4	
Asclepiadaceae (Milkweed Family)						
<i>Asclepias amplexicaulis</i>	Blunt-leaved Milkweed	7	PR;KE;WA	C	G5	
<i>Asclepias exaltata</i>	Poke Milkweed	4	PR;KE;WA	C	G5	
<i>Asclepias purpurascens</i>	Purple Milkweed	0 (1906)	WA	SH	G5	Div 2
<i>Asclepias quadrifolia</i>	Four-leaved Milkweed	4	PR	ST	G5	
<i>Asclepias tuberosa</i>	Butterfly Milkweed	8	WA;BI	C	G5	Div 3
<i>Asclepias verticillata</i>	Whorled Milkweed	4	PR;BR;NE	C	G5	
Asteraceae (Aster Family)						
<i>Ageratina aromaticum</i> #	Snakeroot	0 (1979)	WA	SH	G5	Div 2
<i>Artemisia campestris</i> ssp. <i>caudata</i>	Tall Wormwood	3	NE;WA	C	G5T5	Div 3
<i>Bidens connata</i>	Swamp Beggar's-ticks	2	WA;BI	C	G5	
<i>Bidens tricosperma</i> #	Tickseed Sunflower	3	WA	C	G5	
<i>Chrysopsis mariana</i>	Maryland Golden Aster	1	BI	ST	G5	Div 2
<i>Cirsium horridulum</i>	Yellow Thistle	3	NE;BI	ST	G5	IND
<i>Coreopsis rosea</i>	Pink Tickseed	7	KE;WA	C	G3	Div 1
<i>Doellingeria infirma</i> #	Cornel-leaved Aster	0 (1965)	PR	SH	G5	Div 2
<i>Eupatorium. novae-angliae</i> #	New England Boneset	5	NE;WA	SE	G2	Div 1
<i>Eurybia macrophylla</i> #	Large-leaved Aster	5	PR;WA	C	G5	
<i>Gamochoaeta purpura</i> #	Purple Cudweed	0 (1913)	BI	SH	G5	Div 2
<i>Hasteala suaveolens</i> #	Indian-plantain	0 (1930)	PR	SH	G3G4	Div 4
<i>Helianthus divaricatus</i>	Woodland Sunflower	3	PR;BR;WA	C	G5	
<i>Liatris scariosa</i> var. <i>novae-angliae</i>	Northern Blazing Star	4	WA;BI	SE	G5?T3	Div 1
<i>Nabulus serpentarius</i> #	Lion's-foot	1*	PR	C	G5	Div 2
<i>Oligoneuron rigidum</i> #	Stiff-leaved Goldenrod	0 (1921)	WA	SH	G5	Div 2
<i>Petasites frigidus</i> var. <i>palmatius</i>	Northern Sweet Coltsfoot	1	KE	SE	G5T5	

Species	Common Name	Extant Pop	Counties of Occurrence	State Status	Global Rank	NEPCoP List
Asteraceae (Continued)						
<i>Pityopsis falcata</i> #	Sickle-leaved Golden Aster	8	KE;WA	C	G3G4	Div 1
<i>Rudbeckia laciniata</i>	Green-headed Coneflower	1	PR	ST	G5	
<i>Sclerolepis uniflora</i>	Sclerolepis	1	PR	SE	G4	Div 2
<i>Symphotrichum concolor</i> #	Eastern Silvery Aster	0 (1925)	WA	SH	G4	Div 2
<i>Symphotrichum leave</i> #	Smooth Blue Aster	4	KE;WA	C	G5	
<i>Solidago flexicaulis</i>	Zigzag Goldenrod	2	PR	ST	G5	
<i>Solidago latissimifolia</i> #	Elliott's Goldenrod	2	WA;BI	C	G5	
Berberidaceae (Barberry Family)						
<i>Caulophyllum thalictroides</i>	Blue Cohosh	2	PR	ST	G5	
Boraginaceae (Borage Family)						
<i>Onosmodium virginianum</i>	False Gromwell	0 (1886)	PR	SH	G4	Div 2
Brassicaceae (Mustard Family)						
<i>Boechera drummondii</i> #	Rock-cress	1*	PR	C	G5	Div 3
<i>Boechera missouriensis</i> #	Missouri Rock-cress	1*	PR	C	G4	IND
<i>Draba reptans</i>	Carolina Whitlow-Grass	0 (1902)	PR	SH	G5	Div 2
Cactaceae (Cactus Family)						
<i>Opuntia humifusa</i>	Eastern Prickly-pear	1	NE	SE	G5	
Caesalpiniaceae (Caesalpinia Family)						
<i>Senna hebecarpa</i>	Wild Senna	0 (1971)	KE	SH	G5	
Campanulaceae (Bluebell Family)						
<i>Lobelia dortmanna</i>	Water Lobelia	9	PR;WA	C	G4	
Caprifoliaceae (Honeysuckle Family)						
<i>Linnaea borealis</i>	Twinflower	0 (1930)	WA	SH	G5	
<i>Lonicera dioica</i>	Mountain Honeysuckle	4	PR;KE;WA	C	G5	
<i>Lonicera villosa</i> #	Mountain Fly-honeysuckle	2	KE;WA	C	G5	
<i>Sambucus racemosa</i> var. <i>pubens</i>	Red-berried Elderberry	0 (1878)	PR	SH	G5T4	
<i>Triosteum aurantiacum</i>	Wild Coffee	5	PR;WA	C	G5	Div 3
<i>Triosteum perfoliatum</i>	Feverwort	4	PR;WA	C	G5	Div 2
<i>Viburnum latanoides</i> #	Hobblebush	5	PR	C	G5	
<i>Viburnum nudum</i> var. <i>nudum</i>	Swamp Haw	1	WA	ST	G5	Div 2
Caryophyllaceae (Pink Family)						
<i>Honckenya peploides</i> ssp. <i>robusta</i>	Seabeach Sandwort	6	NE;WA;BI	C	G5T4	
<i>Minuartia caroliniana</i> #	Pine Barren Sandwort	0 (1918)	WA	SH	G5	Div 4
<i>Minuartia groenlandica</i> ssp. <i>glabra</i> #	Smooth Sandwort	2	WA	ST	G4	Div 2
<i>Minuartia michauxii</i> #	Rock Sandwort	1	NE	SE	G5	
<i>Silene stellata</i>	Starry Champion	0 (1935)	WA	SH	G5	Div 2
<i>Spergularia canadensis</i>	Northern Sand-spurrey	1*	WA	C	G5	
Chenopodiaceae (Goosefoot Family)						
<i>Atriplex glabriuscula</i>	Smooth Orache	2	WA	C	G4	
<i>Chenopodium leptophyllum</i>	Goosefoot	2	NE;WA	C	G5	IND
Cistaceae (Rock-rose Family)						
<i>Crocanthemum dumosum</i> #	Bushy Rockrose	6	WA;BI	SE	G3	Div 1
<i>Crocanthemum propinquum</i> #	Low Rockrose	4	BR;WA	C	G4	
<i>Hudsonia ericoides</i>	Golden Heather	2	PR;KE	C	G4	
<i>Lechea minor</i>	Lesser Pinweed	1*	WA	C	G5	IND

<u>Species</u>	<u>Common Name</u>	<u>Extant Pop</u>	<u>Counties of Occurrence</u>	<u>State Status</u>	<u>Global Rank</u>	<u>NEPCoP List</u>
Clusiaceae (St. John's-wort Family)						
<i>Hypericum adpressum</i>	Creeping St. John's-wort	4	WA	ST	G3	Div 1
Cuscutaceae (Dodder Family)						
<i>Cuscuta coryli</i>	Hazel-dodder	0 (1900)	PR	SH	G5	Div 2
<i>Cuscuta indecora</i> var. <i>neuroperata</i>	Pretty Dodder	1	KE	SE	G5T5	
Cornaceae (Dogwood Family)						
<i>Cornus rugosa</i>	Round-leaved Dogwood	4	PR	C	G5	
Cyperaceae (Sedge Family)						
<i>Bolboschoenis maritimus</i> #	Saltmarsh Bulrush	4	BR;NE	C	G5	Div 2
<i>Carex alata</i>	Winged Sedge	1*	BI	C	G5	
<i>Carex albicans</i>	Covered Sedge	2*	PR	C	G5	
<i>Carex buxbaumii</i>	Buxbaum's Sedge	1*	PR	C	G5	Div 3
<i>Carex collinsii</i>	Collins' Sedge	1	KE	SE	G4	Div 2
<i>Carex cumulata</i>	Piled Sedge	3	PR	C	G4	
<i>Carex exilis</i>	Bog Sedge	5	PR;WA	C	G5	
<i>Carex limosa</i>	Mud Sedge	0 (1892)	PR	SH	G5	
<i>Carex mitchelliana</i>	Mitchell's Sedge	1*	PR	C	G4	Div 1
<i>Carex pedunculata</i>	Long-stalked Sedge	2	PR	ST	G5	
<i>Carex polymorpha</i>	Variable Sedge	1	PR	SE	G3	Div 1
<i>Carex schweinitzii</i>	Schweinitz's Sedge	0 (1895)	PR	SH	G3	Div 1
<i>Carex sparganioides</i>	Burreed-like Sedge	0 (1948)	PR	SH	G5	Div 3
<i>Carex sterilis</i>	Sterile Sedge	0 (1878)	PR	SH	G4	Div 2
<i>Carex striata</i>	Walter's Sedge	1	WA	SE	G4	Div 2
<i>Cyperus odoratus</i>	Fragrant Umbrella-sedge	1*	BI	C	G5	IND
<i>Cyperus squarrosus</i>	Awned Umbrella-sedge	1	KE	SE	G5	
<i>Eleocharis equisetoides</i>	Horsetail Spike-rush	8	PR;KE;WA	C	G4	Div 2
<i>Eleocharis fallax</i>	Deceitful Spike-rush	0	WA	SH	G4G5	Div 2
<i>Eleocharis melanocarpa</i>	Black-fruited Spike-rush	1	WA	SE	G4	
<i>Eleocharis rostellata</i>	Small-beaked Spike-rush	4	BR;WA	C	G5	IND
<i>Eleocharis tricostata</i>	Three-angled Spike-rush	1	WA	SE	G4	Div 2
<i>Eriophorum gracile</i>	Slender Cotton-grass	2	PR;WA	ST	G5	
<i>Eriophorum vaginatum</i> #	Hare's Tail	0 (1904)	PR	SH	G5	
<i>Eriophorum viridicarinatum</i>	Bog Cotton-grass	2	KE;WA	C	G5	
<i>Fuirena pumila</i>	Umbrella Grass	2	WA	SE	G4	Div 3
<i>Lipocarpa micrantha</i> #	Tiny-flowered Sedge	2	KE;WA	ST	G4	
<i>Rhynchospora inundata</i>	Inundated Horned Rush	4	PR;WA	SE	G3G4	Div 2
<i>Rhynchospora macrostachya</i>	Tall Beaked Rush	6	PR;KE;WA	ST	G4	
<i>Rhynchospora scirpoides</i>	Long-beaked Bald Rush	2	WA	SE	G4	
<i>Rhynchospora torreyana</i>	Torrey's Beaked Rush	1	WA	SE	G4	Div 2
<i>Schoenoplectus etuberculatus</i> #	Swamp Bulrush	1	WA	SE	G3G4	Div 1
<i>Schoenoplectus smithii</i> #	Smith's Bulrush	3	WA	ST	G5	
<i>Schoenoplectus subterminalis</i> #	Water Bulrush	3	NE;WA	C	G4G5	
<i>Schoenoplectus torreyi</i> #	Torrey's Bulrush	3	WA	C	G5	
<i>Scirpus longii</i>	Long's Bulrush	1	WA	SE	G2	Div 1
<i>Scleria pauciflora</i>	Carolina-whipgrass	3	WA	ST	G5	Div 2
<i>Scleria reticularis</i>	Reticulated Nut-rush	3	WA	ST	G4	Div 1
<i>Scleria triglomerata</i>	Whipgrass	2	WA	ST	G5	Div 2
<i>Trichophorum alpinum</i> #	Northern Cotton-grass	0 (1907)	PR	SH	G5	
Droseraceae (Sundew Family)						
<i>Drosera filiformis</i>	Thread-leaved Sundew	0 (1988)	WA	SH	G5	
Elatinaceae (Waterwort Family)						
<i>Elatine triandra</i> var. <i>americana</i>	American Waterwort	2	WA;BI	C	G4	IND

<u>Species</u>	<u>Common Name</u>	<u>Extant Pop</u>	<u>Counties of Occurrence</u>	<u>State Status</u>	<u>Global Rank</u>	<u>NEPCoP List</u>
Ericaceae (Heath Family)						
<i>Andromeda glaucophylla</i>	Bog Rosemary	1	PR	SE	G5	
<i>Gaultheria hispidula</i>	Creeping Snowberry	2	PR	ST	G5	
<i>Gaylussacia dumosa</i>	Dwarf Huckleberry	4	PR;WA	C	G5	
<i>Kalmia polifolia</i>	Pale Laurel	2	PR	ST	G5	
<i>Rhododendron periclymenoides</i>	Pinxter-flower	1*	WA	C	G5	
Fabaceae (Bean Family)						
<i>Crotalaria sagittalis</i>	Rattlebox	1	WA	ST	G5	
<i>Desmodium cuspidatum</i>	Long-bracted Tick-trefoil	1*	PR	C	G5	Div 2
<i>Desmodium ciliare</i>	Small-leaved Tick-trefoil	2	PR;WA	ST	G5	
<i>Desmodium sessilifolium</i>	Sessile-leaved Tick-trefoil	2	WA	ST	G5	Div 2
<i>Lupinus perennis</i>	Wild Lupine	8	PR;KE;WA	C	G5	Div 3
<i>Strophostyles umbellata</i>	Pink Wild Bean	1	KE	ST	G5	
<i>Tephrosia virginiana</i>	Goat's-rue	6	PR;KE;WA	C	G5	
Fagaceae (Oak Family)						
<i>Quercus prinoides</i>	Dwarf Chestnut Oak	7	KE;WA	C	G5	
<i>Quercus stellata</i>	Post Oak	2	WA	C	G5	
Gentianaceae (Gentian Family)						
<i>Gentiana andrewsii</i>	Closed Gentian	0 (1915)	PR	SH	G4	Div 2
<i>Gentianopsis crinita</i>	Fringed Gentian	3	PR;KE;WA	ST	G4	
<i>Sabatia kennedyana</i>	Plymouth Gentian	4	NE;WA	SE	G3	Div 1
<i>Sabatia stellaris</i>	Sea-pink	4	WA	ST	G5	Div 2
Geraniaceae (Geranium Family)						
<i>Geranium bicknellii</i>	Bicknell's Geranium	1	PR	ST	G5	
<i>Geranium robertianum</i>	Herb-Robert	3	NE	C	G5	
Grossulariaceae (Gooseberry Family)						
<i>Ribes hirtellum</i>	Smooth Gooseberry	4	KE;WA	C	G5	
Haemodoraceae (Bloodwort Family)						
<i>Lachnanthes caroliniana</i>	Carolina Redroot	4	KE;WA	ST	G4	
Haloragaceae (Water-milfoil Family)						
<i>Myriophyllum alterniflorum</i>	Alternate-flowered Water-milfoil	0 (1864)	PR	SH	G5	
<i>Myriophyllum pinnatum</i>	Pinnate Water-milfoil	2	WA;BI	ST	G5	IND
<i>Proserpinaca pectinata</i>	Comb-like Mermaid-weed	1*	WA	C	G5	
Iridaceae (Iris Family)						
<i>Sisyrinchium fuscatum</i>	Sandplain Blue-eyed Grass	0 (1900)	WA	SH	G5	
Juncaceae (Rush Family)						
<i>Juncus anthelatus</i>	Rush	1*	KE	C	G5	
<i>Juncus debilis</i>	Weak Rush	1	WA	SE	G5	Div 2
Juncaginaceae (Arrow-grass Family)						
<i>Triglochin palustre</i>	Arrow-grass	0 (1878)	NE	SH	G5	
Lamiaceae (Mint Family)						
<i>Hedeoma pulegioides</i>	American Pennyroyal	4	PR	C	G5	
<i>Lycopus rubellus</i>	Stalked Water-horehound	2*	PR;WA	C	G5	Div 2
<i>Monarda fistulosa</i>	Wild Bergamot	0 (1965)	WA	SH	G5	

Species	Common Name	Extant Pop	Counties of Occurrence	State Status	Global Rank	NEPCoP List
Lamiaceae (continued)						
<i>Physostegia virginiana</i>	False Dragonhead	2	KE	C	G5	
<i>Stachys hyssopifolia</i>	Hyssop-leaved Hedge-nettle	3	WA	ST	G5	Div 3
Lentibulariaceae (Bladderwort Family)						
<i>Utricularia biflora</i>	Two-flowered Bladderwort	2	WA	ST	G5	Div 2
<i>Utricularia geminiscapa</i>	Paired Bladderwort	5	WA	C	G4G5	
<i>Utricularia gibba</i>	Humped Bladderwort	4	PR;KE;WA	C	G5	
<i>Utricularia intermedia</i>	Flat-leaved Bladderwort	2	PR;KE	C	G5	
<i>Utricularia minor</i>	Small Bladderwort	0 (1920)	PR	SH	G5	
<i>Utricularia resupinata</i>	Reversed Bladderwort	4	WA	C	G4	Div 2
<i>Utricularia subulata</i>	Zigzag Bladderwort	4	PR;WA	C	G5	Div 2
Liliaceae (Lily Family)						
<i>Aletris farinosa</i>	Colicroot	8	PR;KE;NE;WA	C	G5	
<i>Allium tricoccum</i>	Wild Leek	3	PR;KE;NE	C	G5	
<i>Lilium canadense</i>	Canada Lily	3	PR	ST	G5	
<i>Lilium philadelphicum</i>	Wood Lily	9	PR;KE;WA	C	G5	
<i>Maianthemum trifolium</i> #	3-leaved False Solomon's Seal	1	PR	SE	G5	
<i>Streptopus lanceolatus</i> #	Rose Twisted-stalk	2	PR	ST	G5	
<i>Trillium erectum</i>	Purple Trillium	2	PR;KE	ST	G5	
Linaceae (Flax Family)						
<i>Linum intercursum</i>	Sandplain Flax	1	WA	SE	G4	
<i>Linum medium</i> var. <i>texanum</i>	Common Yellow Flax	4	PR;WA	C	G5T5	Div 2
<i>Linum sulcatum</i>	Grooved Flax	0 (1844)	PR	SH	G5	Div 2
Lythraceae (Loosestrifes)						
<i>Rotala ramosior</i>	Toothcup	1	KE	SE	G5	Div 2
Oleaceae (Ash Family)						
<i>Fraxinus nigra</i>	Black Ash	6	PR;KE	C	G5	
Onagraceae (Evening-primrose Family)						
<i>Circaea alpina</i>	Small Enchanter's Nightshade	4	PR;KE	C	G5	
<i>Epilobium palustre</i>	Marsh Willow-herb	1	WA	ST	G5	
<i>Ludwigia sphaerocarpa</i>	Round-fruited False Loosestrife	1	WA	SE	G5	Div 2
Orchidaceae (Orchids)						
<i>Arethusa bulbosa</i>	Swamp Pink	4	PR;KE;WA	SE	G4	Div 3
<i>Calopogon tuberosus</i>	Grass Pink	9	PR;KE;WA	C	G5	
<i>Corallorhiza maculata</i>	Large Coralroot	7	PR;KE	C	G5	
<i>Corallorhiza odontorhiza</i>	Autumn Coralroot	1	PR	SE	G5	Div 3
<i>Corallorhiza trifida</i>	Early Coralroot	4	PR;KE	C	G5	
<i>Cypripedium. parviflorum</i> var. <i>pubescens</i> #	Yellow Lady Slipper	3	PR	SE	G5	IND
<i>Dactylorhiza viridis</i> #	Long-bracted Green Orchis	2	PR	ST	G5T5	
<i>Isotria medeoloides</i>	Small Whorled Pogonia	1	PR	FT	G2	Div 1
<i>Liparis lilifolia</i>	Lily-leaved Twayblade	1	PRO	SE	G5	Div 2
<i>Liparis loeselii</i>	Yellow Twayblade	2	PR;KE	ST	G5	
<i>Listera cordata</i>	Heartleaf Twayblade	0 (1897)	WA	SH	G5	Div 3
<i>Malaxis bayradii</i>	Bayard's Adder's-mouth	0 (1909)	WA	SH	G1G2	Div 1
<i>Malaxis unifolia</i>	Green Adder's-mouth	1	WA	SE	G5	
<i>Galearis spectabilis</i>	Showy Orchis	1	PR	SE	G5	
<i>Platanthera blephariglottis</i>	White Fringed Orchid	4	BR;KE;WA	ST	G4G5	
<i>Platanthera ciliaris</i>	Yellow Fringed Orchid	2	WA	SE	G5	Div 2
<i>Platanthera flava</i> var. <i>herbiola</i>	Pale Green Orchid	3	NE;KE;WA	SE	G4T4	
<i>Platanthera hookeri</i>	Hooker's Orchid	0 (1983)	PR	SH	G5	

Species	Common Name	Extant Pop	Counties of Occurrence	State Status	Global Rank	NEPCoP List
Orcidaceae (continued):						
<i>Platanthera huronensis</i> #	Northern Green Orchid	2	PR	ST	G5	
<i>Platanthera lacera</i>	Ragged Fringed Orchid	3	WA;BI	C	G5	
<i>Platanthera orbiculata</i> #	Round-leaved Orchid	1 (1971)	PR	SH	G5	
<i>Platanthera macrophylla</i> #	Large Round-leaved Orchid	0 (1973)	PR	SH	G5	
<i>Platanthera psycodes</i>	Small Purple Fringed Orchid	9	PR;KE;WA	C	G5	
<i>Spiranthes lucida</i>	Shining Ladies'-tresses	0 (1960)	PR	SH	G5	
<i>Spiranthes tuberosa</i>	Little Ladies'-tresses	2	WA	SE	G5	
<i>Spiranthes vernalis</i>	Spring Ladies'-tresses	3	NE;WA	C	G5	
Orobanchaceae (Broom-rape Family)						
<i>Conopholis americana</i>	Squaw-root	8	PR;NE;WA	C	G5	
Oxalidaceae (Wood sorrel Family)						
<i>Oxalis violacea</i>	Violet Wood-sorrel	3	NE;WA	SE	G5	Div 2
Papaveraceae (Poppy Family)						
<i>Adlumia fungosa</i>	Climbing Fumitory	2	PR	SE	G4	
<i>Capnoides sempervirens</i> #	Pale Corydalis	10	PR;KE;WA	C	G4G5	
<i>Sanguinaria canadensis</i>	Bloodroot	6	PR;KE;WA	C	G5	
Poaceae (Grass Family)						
<i>Aristida longespica</i>	Slim-spike Three-awn	6	PR;BR;NE;KE;WA	C	G5	
<i>Aristida purpurascens</i>	Purple Needlegrass	2	BI	ST	G5	Div 2
<i>Dichanthelium dichotomum</i> var. <i>mattamuskatense</i> #	Mattamuskee Panic-grass	0 (1927)	WA	SH	G3	IND
<i>Dichanthelium wrightianum</i> #	Wright's Panic-grass	2	WA	C	G4	
<i>Elymus macgregorii</i> #	MacGregor's Wild Rye	1*	PR	C	G5	Div 2
<i>Leptochloa fusca</i> var. <i>fascicularis</i>	Saltpond Grass	0 (1913)	BI	SH	G5T3	Div 1
<i>Oryzopsis pungens</i>	Northern Ricegrass	1*	WA	C	G5	
<i>Panicum amarum</i>	Panic-grass	1*	WA	C	G5	
<i>Panicum philadelphicum</i>	Philadelphia Panic-grass	1*	WA	C	G5	
<i>Panicum rigidulum</i>	Long-leaved Panic-grass	1*	WA	C	G5	
<i>Paspalum setaceum</i> var. <i>psammophilum</i>	Tufted Beard-grass	2	NE	C	G5T4	Div 2
<i>Poa saltuensis</i> ssp. <i>languida</i> #	Weak Bluegrass	1*	WA	C	G3G4	
<i>Puccinellia pumila</i>	Goosegrass	0 (1917)	WA	SH	G4	
<i>Setaria parviflora</i> #	Bristly Foxtail	1*	BR	C	G5	
<i>Sorghastrum nutans</i>	Indian Grass	5	BR;KE;WA;BI	C	G5	Div 3
<i>Spartina cynosuroides</i>	Salt Reed Cordgrass	1*	PR	C	G5	Div 2
<i>Sphenopholis nitida</i>	Shining Sphenopholis	1*	PR	C	G5	Div 2
<i>Sphenopholis obtusata</i>	Prairie Wedgegrass	1*	PR	C	G5	IND
<i>Sphenopholis pensylvanica</i>	Swamp Oats	0	PR	SH	G4	Div 2
<i>Sporobolus compositus</i> #	Tall Dropseed	1*	WA	C	G5	
<i>Tripsacum dactyloides</i>	Northern Gama-grass	9	BR;NE;WA	C	G5	Div 2
<i>Zizania aquatica</i>	Wild Rice	6	KE;WA	C	G5	
Podostemaceae (River-weed Family)						
<i>Podostemum ceratophyllum</i>	Riverweed	1*	KE	C	G5	
Polygalaceae (Milkwort Family)						
<i>Polygala ambigua</i>	Ambiguous Milkwort	0 (1895)	NE	SH	G?	IND
<i>Polygala cruciata</i>	Cross-leaved Milkwort	3	NE;WA	C	G5	
<i>Polygala verticillata</i>	Whorled Milkwort	3	NE;WA	C	G5	IND
Polygonaceae (Buckwheat Family)						
<i>Persicaria setacea</i>	Strigose Knotweed	0 (1924)	WA	SH	G5	IND
<i>Polygonum erectum</i>	Erect Knotweed	0 (1906)	WA	SH	G5	IND
<i>Polygonum glaucum</i>	Seabeach Knotweed	3	NE;BI	ST	G3	Div 1

<u>Species</u>	<u>Common Name</u>	<u>Extant Pop</u>	<u>Counties of Occurrence</u>	<u>State Status</u>	<u>Global Rank</u>	<u>NEPCoP List</u>
Portulacaceae (Purslane Family)						
<i>Claytonia virginica</i>	Meadow Beauty	0 (1838)	PR	SH	G5	
Potamogetonaceae (Pondweed Family)						
<i>Potamogeton confervoides</i>	Alga-pondweed	0 (1929)	WA	SH	G4	Div 1
<i>Potamogeton diversifolius</i>	Snailseed Pondweed	1*	WA	C	G5	IND
<i>Potamogeton pusillus</i> var. <i>gemmiparus</i>	Slender Pondweed	1*	PR	C	G5T3	IND
Primulaceae (Primrose Family)						
<i>Glaux maritima</i>	Sea Milkwort	0 (1917)	WA	SH	G5	
<i>Hottonia inflata</i>	Featherfoil	6	PR;NE;WA	C	G4	
Pyrolaceae (Shinleaf Family)						
<i>Moneses uniflora</i>	One-flowered Wintergreen	2	PR	ST	G5	
<i>Orthilia secunda</i>	One-sided Pyrola	2	PR	ST	G5	
<i>Pyrola chlorantha</i>	Green Pyrola	4	PR;KE	C	G5	
Ranunculaceae (Buttercup Family)						
<i>Actaea rubra</i>	Red Baneberry	5	PR;KE	C	G5	
<i>Anemone americana</i> #	Hepatica	5	PR	C	G5	
<i>Anemone cylindrica</i>	Long-fruited Anemone	3	PR	C	G5	
<i>Anemone virginiana</i>	Large Anemone	0 (1950)	PR	SH	G5	
<i>Clematis occidentalis</i>	Purple Clematis	1	PR	SE	G5	
<i>Ranunculus allegheniensis</i>	Allegheny Crowfoot	1*	PR	C	G4G5	Div 2
<i>Ranunculus ambigens</i>	Water-plantain Spearwort	1*	NE	C	G4	Div 2
<i>Ranunculus cymbalaria</i>	Seaside Buttercup	0 (1948)	WA	SH	G5	
<i>Ranunculus flabellaris</i>	Yellow Water-crowfoot	4	PR	C	G5	
<i>Ranunculus hispidus</i>	Hispid Buttercup	1*	PR	C	G5	IND
<i>Ranunculus micranthus</i>	Small-flowered Crowfoot	1	PR	SE	G5	Div 2
<i>Ranunculus sceleratus</i>	Cursed Crowfoot	3	PR;BR	C	G5	
<i>Ranunculus trichophyllus</i> var. <i>calvescens</i>	White Water-crowfoot	1	WA	SE	G5	
<i>Thalictrum revolutum</i>	Purple Meadow-rue	0 (1900)	PR	SH	G5	
<i>Thalictrum thalictroides</i> #	Rue Anemone	5	PR;WA	C	G5	
Rosaceae (Rose Family)						
<i>Agrimonia pubescens</i>	Hairy Agrimony	0 (1912)	PR	SH	G5	
<i>Dalibarda repens</i>	Dewdrop	1	PR	SE	G5	
<i>Geum laciniatum</i>	Hairy Herb-Bennet	0 (1920)	PR	SH	G5	
<i>Prunus pumila</i> var. <i>susquehanae</i> #	Sand Cherry	3	KE;WA	C	G5T4	
<i>Sanguisorba canadensis</i>	Canadian Burnet	1	WA	SE	G5	
<i>Sibbaldiopsis tridentata</i> #	Three-toothed Cinquefoil	0 (1979)	WA	SH	G5	
Rubiaceae (Madder Family)						
<i>Houstonia longifolia</i> #	Long-leaved Bluets	0 (1966)	WA	SH	G4G5	
Salicaceae (Willow Family)						
<i>Populus heterophylla</i>	Swamp Cottonwood	1	WA	SE	G5	Div 2
<i>Salix pedicellaris</i>	Bog Willow	0 (1970)	PR	SH	G5	
Saururaceae (Lizard's-tail Family)						
<i>Saururus cernuus</i>	Lizard's-tail	1	NE	SE	G5	Div 2
Saxifragaceae (Saxifrage Family)						
<i>Parnassia glauca</i>	Grass-of-Parnassus	0 (1980)	PR	SH	G5	
<i>Penthorum sedoides</i>	Ditch Stonecrop	7	PR;KE;WA	C	G5	
<i>Saxifraga pensylvanica</i>	Swamp Saxifrage	5	PR	C	G5	
<i>Saxifraga virginianensis</i>	Early Saxifrage	10	PR;BR;NE	C	G5	

Species	Common Name	Extant Pop	Counties of Occurrence	State Status	Global Rank	NEPCoP List
Scheuchzeriaceae (Pod-grass Family)						
<i>Scheuchzeria palustris</i>	Pod-grass	1	WA	SE	G5	
Scrophulariaceae (Figwort Family)						
<i>Agalinis acuta</i>	Sandplain Gerardia	1	WA	FE	G1	Div 1
<i>Agalinis tenuifolia</i>	Slender Gerardia	9	PR;NE	C	G5	
<i>Castilleja coccinea</i>	Painted Cup	0 (1908)	PR	SH	G5	Div 2
<i>Gratiola virginiana</i>	Virginia Hedge-hyssop	1*	BI	C	G5	Div 2
<i>Limosella australis</i> #	Mudwort	5	NE;WA;BI	C	G4G5	
<i>Penstemon digitalis</i>	Tall White Beard-tongue	2	PR	ST	G5	
<i>Penstemon hirsutus</i>	Northeastern Beard-tongue	1*	PR	C	G4	
<i>Scrophularia lanceolata</i>	Hare Figwort	4	PR;NE;WA	C	G5	
<i>Scrophularia marilandica</i>	Maryland Figwort	2	WA	ST	G5	
Urticaceae (Nettle Family)						
<i>Pilea fontana</i>	Clearweed	1*	BI	C	G5	
Violaceae (Violet Family)						
<i>Viola canadensis</i>	Canada Violet	0 (1920)	PR	SH	G5	
<i>Viola palmata</i>	Palmate-leaved Violet	2	PR	ST	G5	IND
<i>Viola pubescens</i>	Smooth Yellow Violet	3	PR;KE	C	G5	
<i>Viola rotundifolia</i>	Round-leaved Yellow Violet	2	PR	ST	G5	
<i>Viola subsinuata</i>	Early Blue Violet	0 (1941)	WA	SH	G2	
Viscaceae (Christmas-mistletoe Family)						
<i>Arceuthobium pusillum</i>	Dwarf Mistletoe	1	PR	SE	G5	
Xyridaceae (Yellow-eyed Grass Family)						
<i>Xyris montana</i>	Northern Yellow-eyed Grass	3	PR;WA	ST	G4	

Appendix 1. Synonyms for Plant Name Changes

Cited Name	Previous Name
<i>Ageratina aromaticum</i>	<i>Eupatorium aromaticum</i>
<i>Andromeda polifolia</i> var. <i>glaucophylla</i>	<i>Andromeda glaucophylla</i>
<i>Anemone americana</i>	<i>Hepatica americana</i>
<i>Bidens tricosperma</i>	<i>Bidens coronata</i>
<i>Boechera drummondii</i>	<i>Arabis drummondii</i>
<i>Boechera missouriensis</i>	<i>Arabis missouriensis</i>
<i>Bolboschoenus maritimus</i>	<i>Scirpus maritimus</i>
<i>Botrychium angustisegmentum</i>	<i>Botrychium lanceolatum</i> var. <i>angustisegmentum</i>
<i>Capnoides sempervirens</i>	<i>Corydalis sempervirens</i>
<i>Carex striata</i>	<i>Carex striata</i> var. <i>brevis</i>
<i>Crocanthemum dumosum</i>	<i>Helianthemum dumosum</i>
<i>Crocanthemum propinquum</i>	<i>Helianthemum propinquum</i>
<i>Cypripedium parviflorum</i> var. <i>pubescens</i>	<i>Cypripedium calceolus</i> var. <i>parviflorum</i>
	<i>Cypripedium calceolus</i> var. <i>pubescens</i>
<i>Dactylorhiza viridis</i>	<i>Coeloglossum viride</i> var. <i>virescens</i>
<i>Dichanthelium dichotomum</i> ssp. <i>mattamuskeetense</i>	<i>Panicum mattamuskeetense</i>
<i>Dichanthelium wrightianum</i>	<i>Panicum wrightianum</i>
<i>Doellingeria infirma</i>	<i>Aster infirmus</i>
<i>Elymus glabriflorus</i>	<i>Elymus virginicus</i> var. <i>glabriflorus</i>
<i>Eriophorum vaginatum</i>	<i>Eriophorum vaginatum</i> var. <i>spissum</i>
<i>Eupatorium novae-angliae</i>	<i>Eupatorium leucolepis</i> var. <i>novae-angliae</i>
<i>Eurybia macrophylla</i>	<i>Aster macrophyllus</i>
<i>Gamochaeta purpurea</i>	<i>Gnaphalium purpureum</i>
<i>Gaylussacia dumosa</i>	<i>Gaylussacia dumosa</i> var. <i>bigeloviana</i>
<i>Hasteola suaveolens</i>	<i>Cacalia suaveolens</i>
<i>Houstonia longifolia</i>	<i>Hedyotis longifolia</i>
<i>Juncus antheratus</i>	<i>Juncus tenuis</i> var. <i>antheratus</i>
<i>Leptochloa fusca</i> var. <i>fascicularis</i>	<i>Leptochloa fascicularis</i> var. <i>maritima</i>
<i>Lipocarpa micrantha</i>	<i>Hemicarpha micrantha</i>
<i>Lonicera villosa</i>	<i>Lonicera caerulea</i> var. <i>villosa</i>
<i>Maianthemum trifolium</i>	<i>Smilacina trifolia</i>
<i>Matteuccia struthiopteris</i>	<i>Matteuccia struthiopteris</i> var. <i>pennsylvanica</i>
<i>Minuartia caroliniana</i>	<i>Arenaria caroliniana</i>
<i>Minuartia groenlandica</i> ssp. <i>glabra</i>	<i>Arenaria groenlandica</i> var. <i>glabra</i>
<i>Minuartia michauxii</i>	<i>Arenaria stricta</i>
<i>Nabalus serpentarius</i>	<i>Prenanthes serpentaria</i>
<i>Oligoneuron rigidum</i>	<i>Solidago rigida</i>
<i>Orthilia secunda</i>	<i>Pyrola secunda</i>
<i>Persicaria setacea</i>	<i>Polygonum hydropiperoides</i> var. <i>setaceum</i>
<i>Pityopsis falcata</i>	<i>Chrysopsis falcata</i>
<i>Platanthera huronensis</i>	<i>Habenaria hyperborea</i>
<i>Platanthera macrophylla</i>	<i>Platanthera orbiculata</i> var. <i>macrophylla</i>
<i>Poa saltuensis</i> var. <i>languida</i>	<i>Poa languida</i>
<i>Polygala ambigua</i>	<i>Polygala verticillata</i> var. <i>ambigua</i>
<i>Prunus pumila</i> var. <i>susquehanae</i>	<i>Prunus pumila</i> var. <i>cuneata</i>
<i>Rubus dalibarda</i>	<i>Dalibarda repens</i>

Appendix 1. (Continued)

<u>Cited Name</u>	<u>Previous Name</u>
<i>Schoenoplectus etuberculatus</i>	<i>Scirpus etuberculatus</i>
<i>Schoenoplectus smithii</i>	<i>Scirpus smithii</i>
<i>Schoenoplectus subterminalis</i>	<i>Scirpus subterminalis</i>
<i>Schoenoplectus torreyi</i>	<i>Scirpus torreyi</i>
<i>Setaria parviflora</i>	<i>Setaria geniculata</i>
<i>Sibbaldiopsis tridentata</i>	<i>Potentilla tridentata</i>
<i>Solidago latissimifolia</i>	<i>Solidago elliottii</i>
<i>Sporobolus compositus</i>	<i>Sporobolus asper</i>
<i>Streptopus lanceolatus</i>	<i>Streptopus roseus</i>
<i>Symphyotrichum concolor</i>	<i>Aster concolor</i>
<i>Symphyotrichum laeve</i>	<i>Aster laevis</i>
<i>Thalictrum thalictroides</i>	<i>Anemonella thalictroides</i>
<i>Trichophorum alpinum</i>	<i>Scirpus hudsonius</i>
<i>Viburnum lantanoides</i>	<i>Viburnum alnifolium</i>