

A seagull is captured in flight, its wings spread wide, against a backdrop of a vast, blue-green ocean. The water's surface is textured with small, rhythmic waves. In the foreground, a white, frothy wave is breaking, creating a stark contrast with the darker water. The overall scene conveys a sense of natural beauty and coastal activity.

Gambia 2023

Bart Wursten

Untitled Map
Write a description for your map.

Legend



Untitled Map
Write a description for your map.

Legend



Google Earth

Data SIO, NOAA, U.S. Navy, NGA, GEBCO
Image Landsat / Copernicus
Image IBCAO



View from Space (Altitude: 12605 km)

Untitled Map
Write a description for your map.

Legend



Google Earth

Data SIO, NOAA, U.S. Navy, NGA, GEBCO
Image Landsat / Copernicus



View from Space (Altitude: 8371 km)

Untitled Map
Write a description for your map.

Legend

Google Earth

Data SIO, NOAA, U.S. Navy, NGA, GEBCO
Image Landsat / Copernicus



View from Space (Altitude: 6971 km)



Untitled Map
Write a description for your map.

Legend



Google Earth
Data SIO, NOAA, U.S. Navy, NGA, GEBCO
Image Landsat / Copernicus

900 km

Untitled Map
Write a description for your map.

Legend



Google Earth

Data SIO, NOAA, U.S. Navy, NGA, GEBCO
Image Landsat / Copernicus



100 km

Untitled Map
Write a description for your map.

Legend



Google Earth

Data SIO, NOAA, U.S. Navy, NGA, GEBCO
Image Landsat / Copernicus



70 km

Untitled Map
Write a description for your map.

Legend



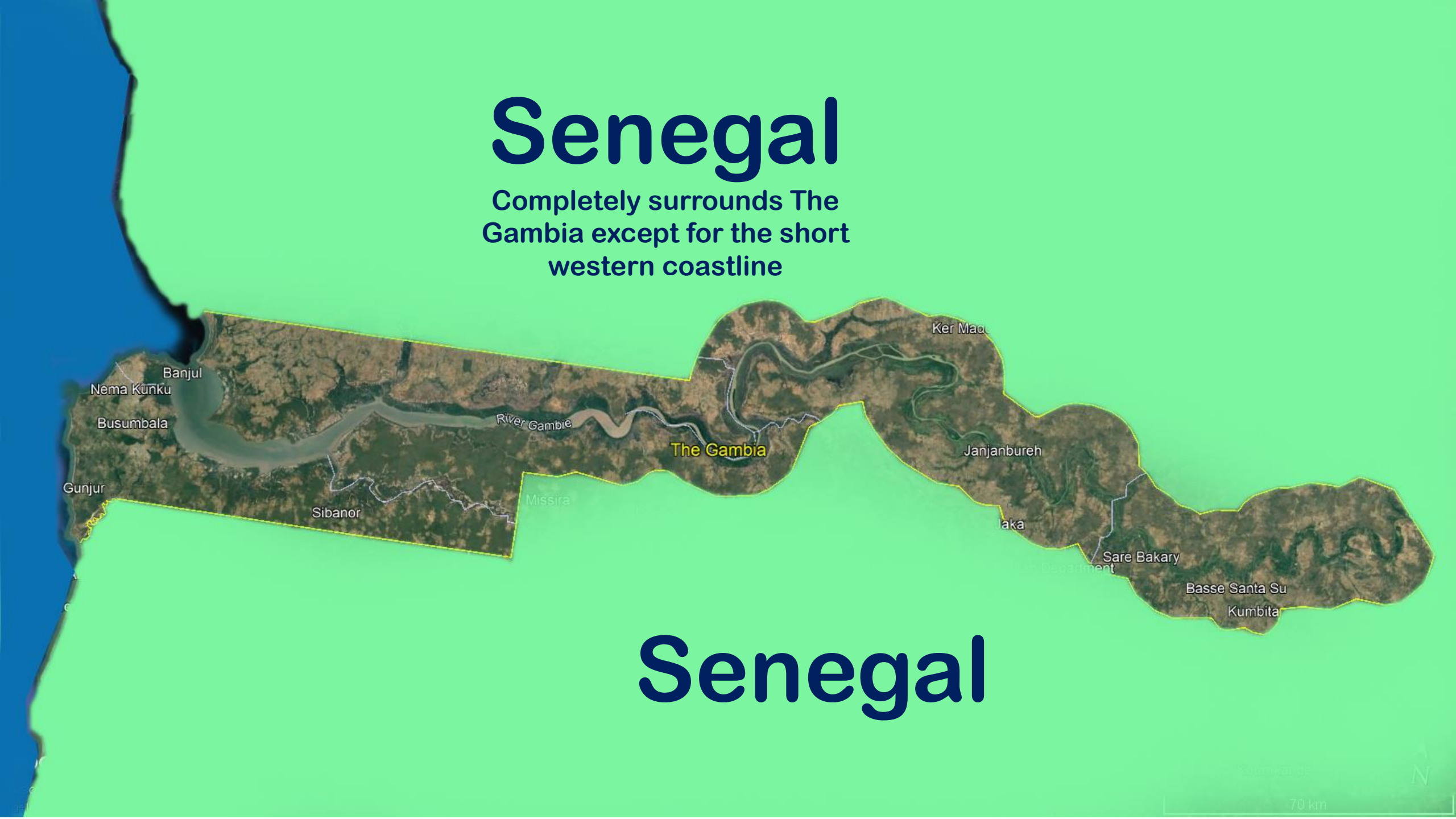
Google Earth

Data SIO, NOAA, U.S. Navy, NGA, GEBCO
Image Landsat / Copernicus

70 km

Senegal

Completely surrounds The Gambia except for the short western coastline



Senegal

Scale bar: 70 km



70 km

Former British colony

The Gambia

River Gambia

Ker Maad

Janjanbureh

Jaka

Sare Bakary

Basse Santa Su

Kumbita

Banjul

Nema Kunku

Busumbala

Gunjur

Sibanor

Missira

70 km





**Independence on
18 February 1965**



Banjul
Nema Kunku
Busumbala
Gunjur



Bakary
Basse Santa Su
Kumbita

Scale bar

70 km

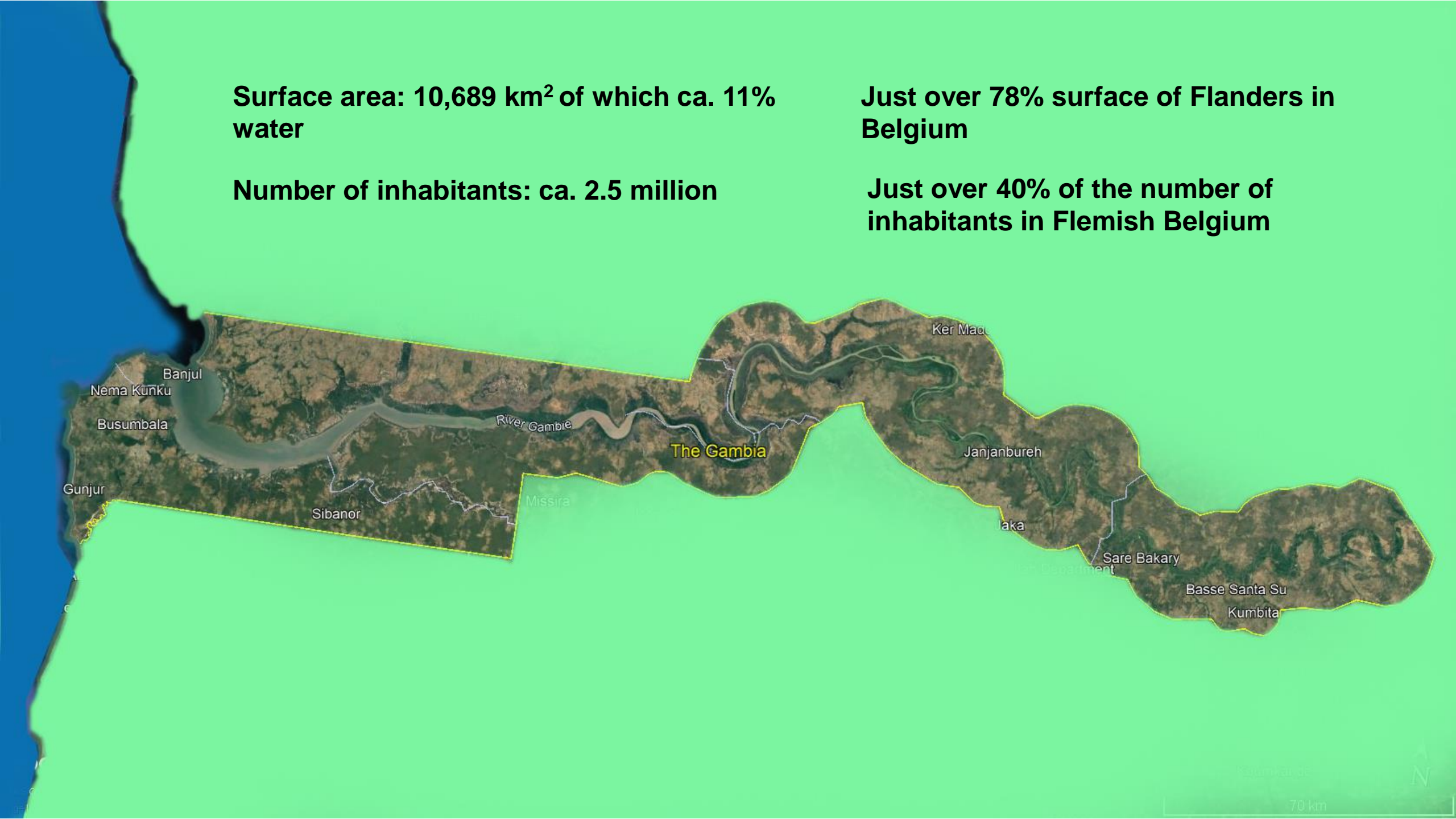


**Surface area: 10,689 km² of which ca. 11%
water**

Number of inhabitants: ca. 2.5 million

**Just over 78% surface of Flanders in
Belgium**

**Just over 40% of the number of
inhabitants in Flemish Belgium**







15:00:00

KM 4815-C

SPACE GEAR

GLX

KM 6952-D

PHARM

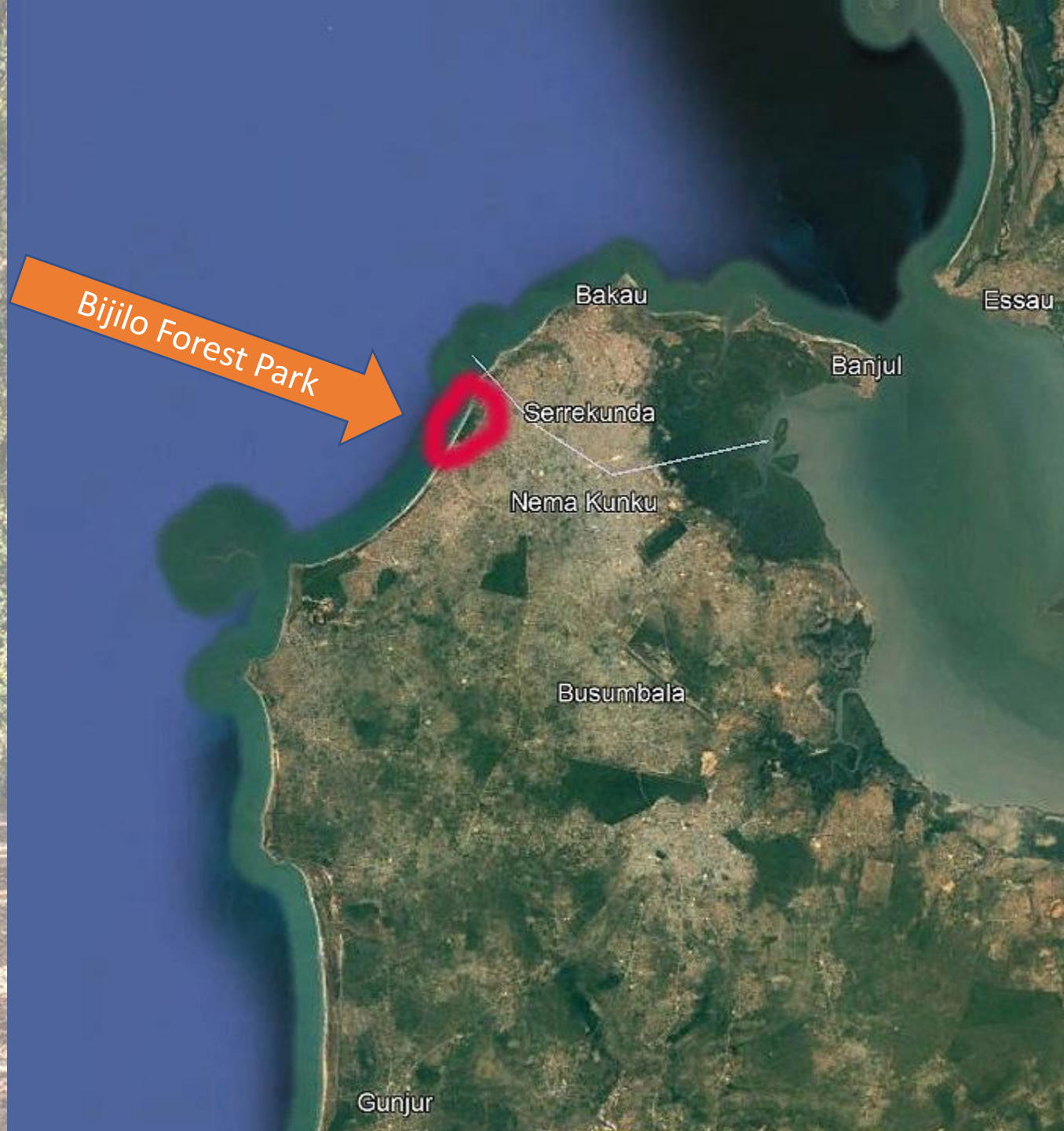
RESTAURANT

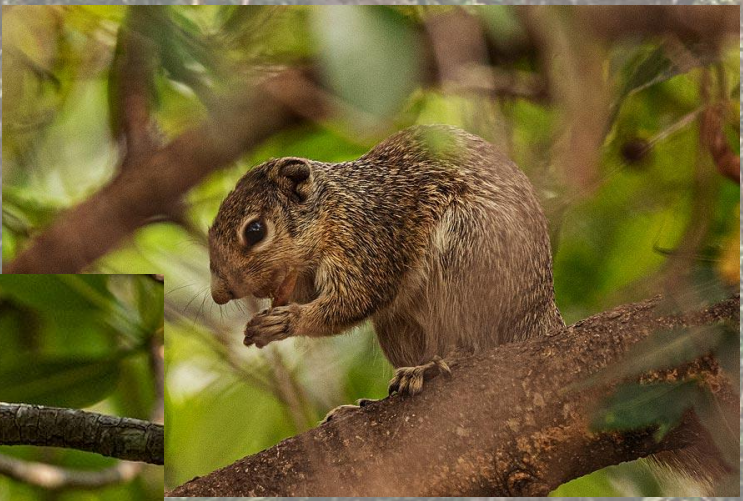
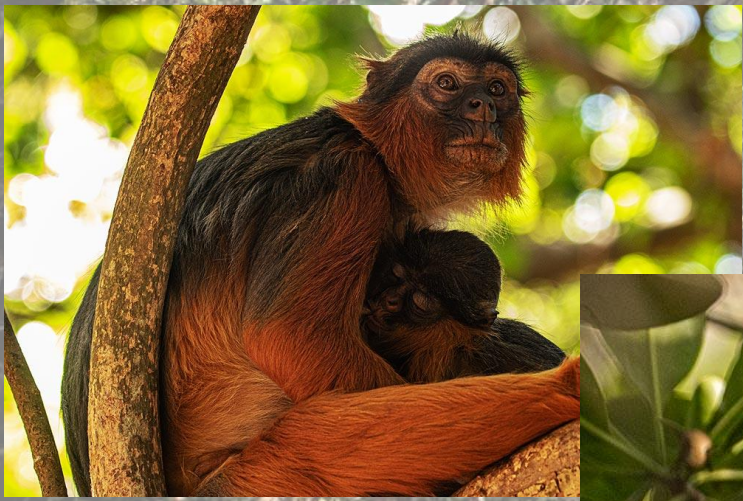
FAST FOOD





Temminck's Red Colobus
(*Piliocolobus badius temminckii*)



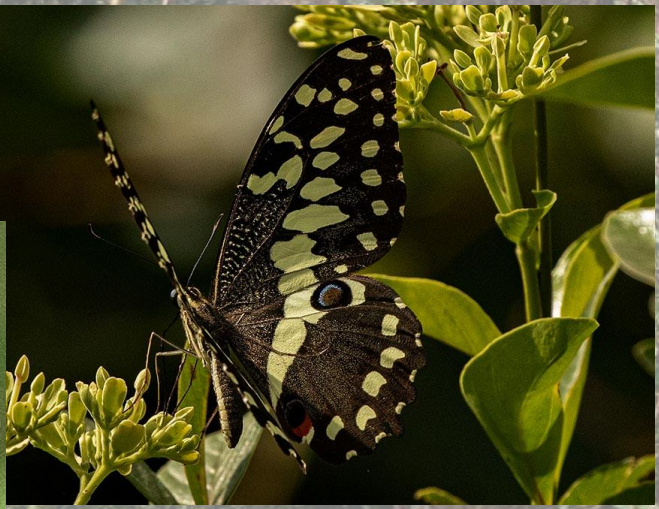
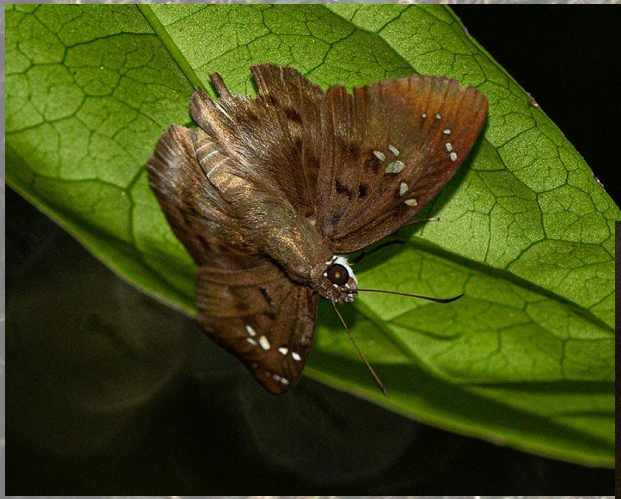




Western Bluebill
(*Spermophaga haematina*)

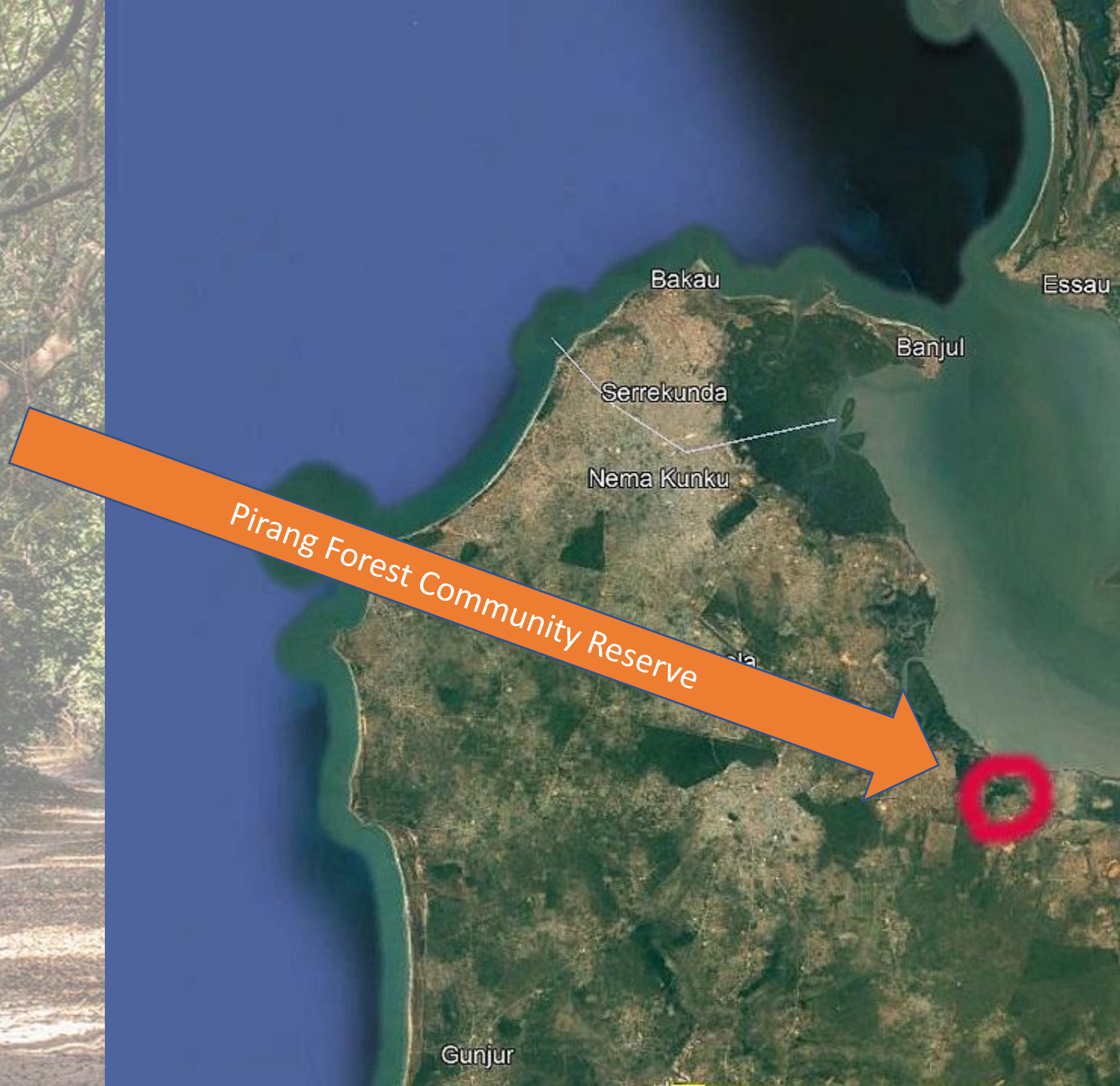
Abuko Nature Reserve

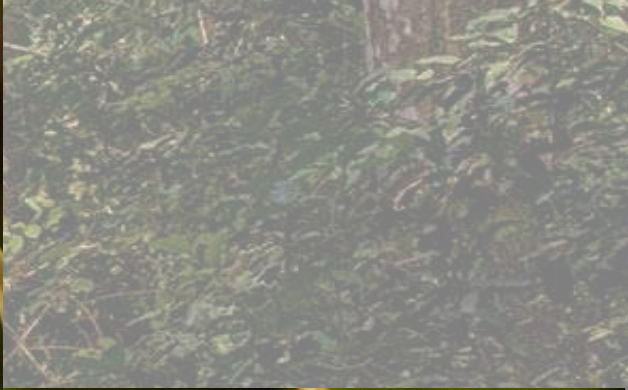






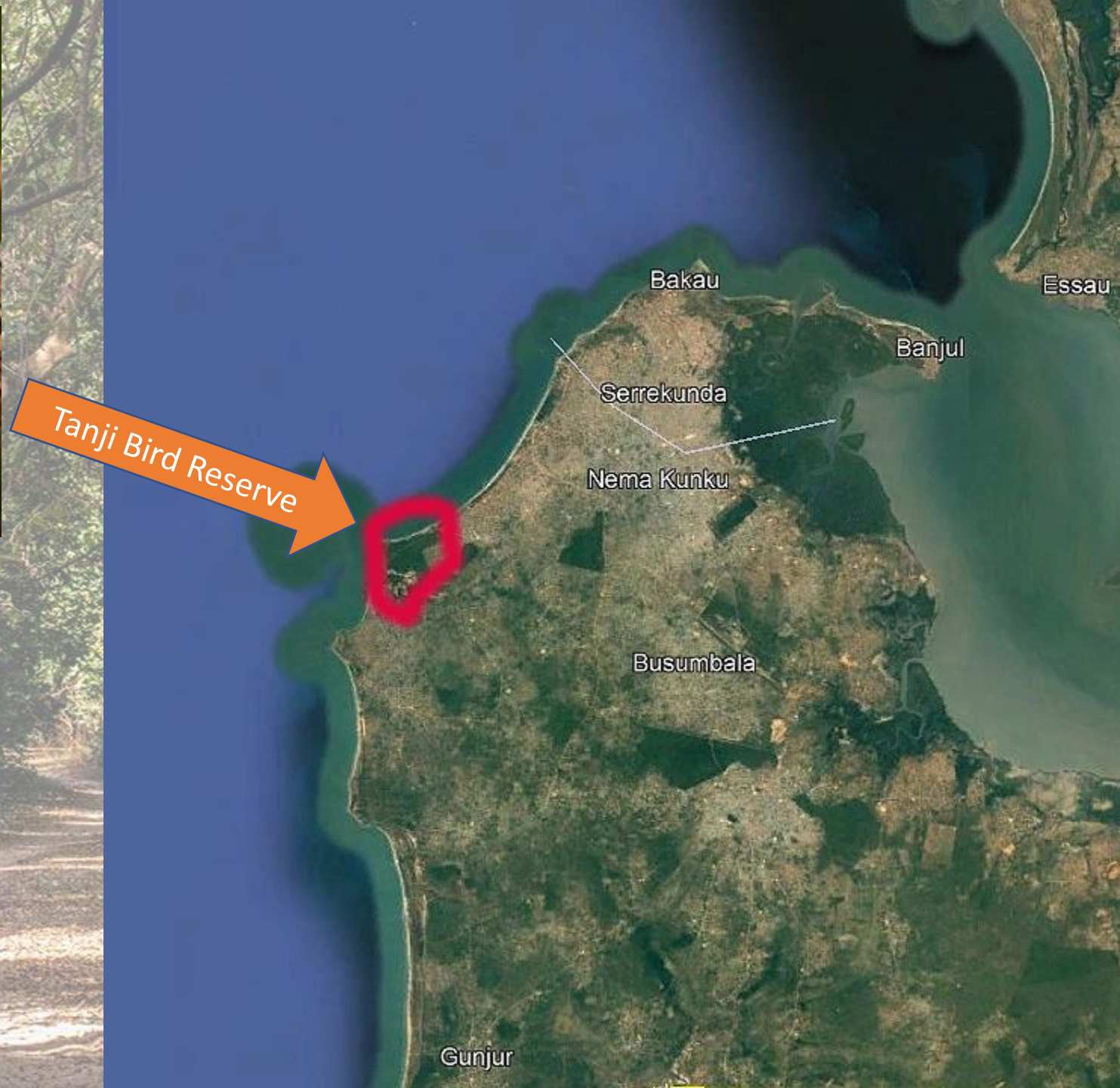
Apocynaceae -
Strophanthus sarmentosus

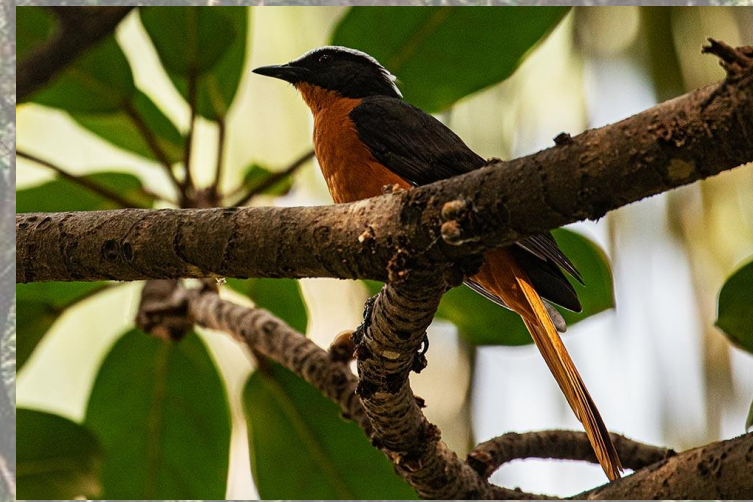






Grey-backed Camaroptera
(*Camaropera brachyura*)















Mangroves





lots

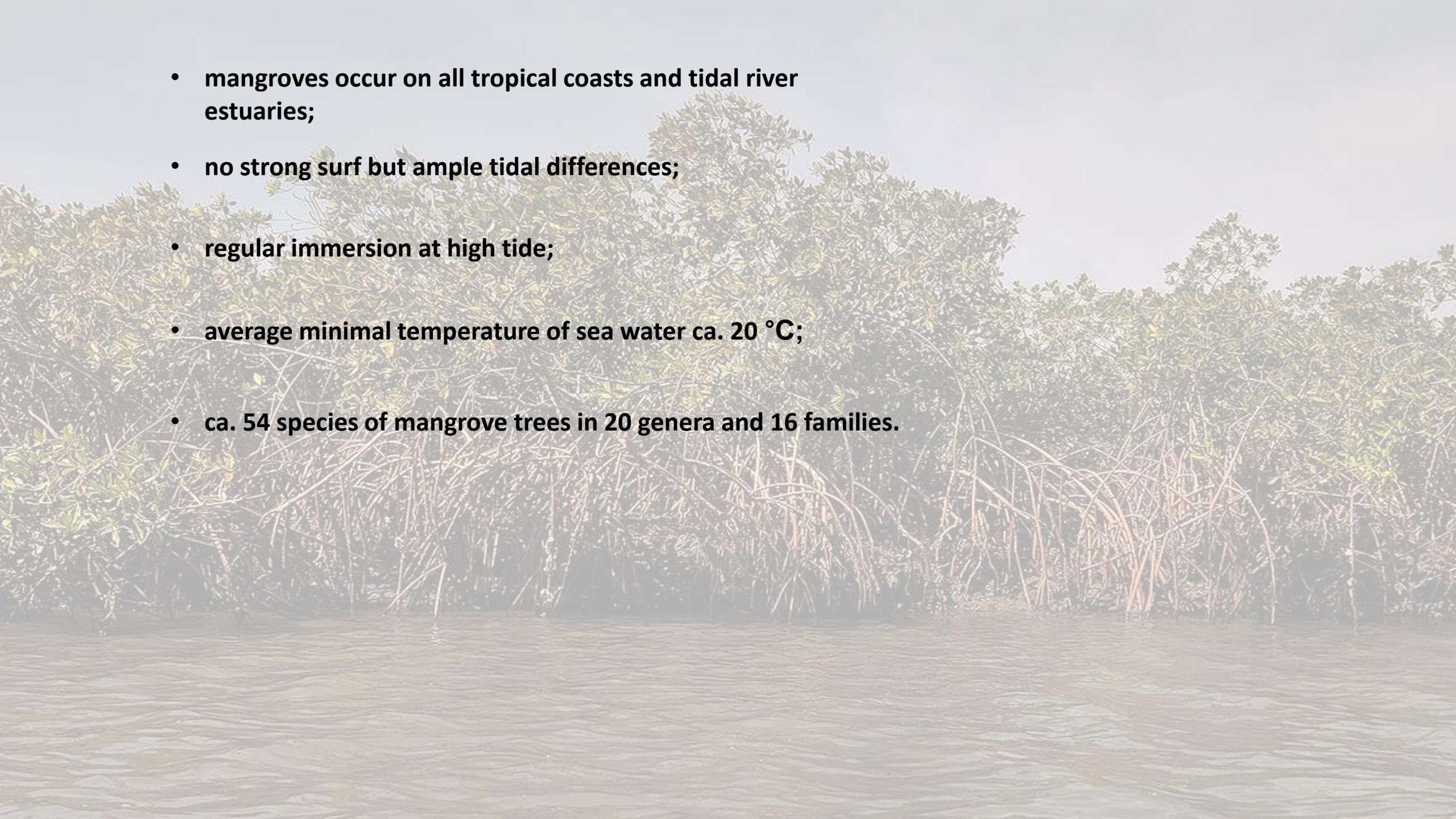
and lots

of
mangroves





- mangroves occur on all tropical coasts and tidal river estuaries;
- no strong surf but ample tidal differences;
- regular immersion at high tide;
- average minimal temperature of sea water ca. 20 °C;
- ca. 54 species of mangrove trees in 20 genera and 16 families.





W Atlantic coasts Tropical America

Tropical Asia and Australia

1000 km



***Avicennia germinans* (L.)**



***Rhizophora racemosa* G. Mey.**

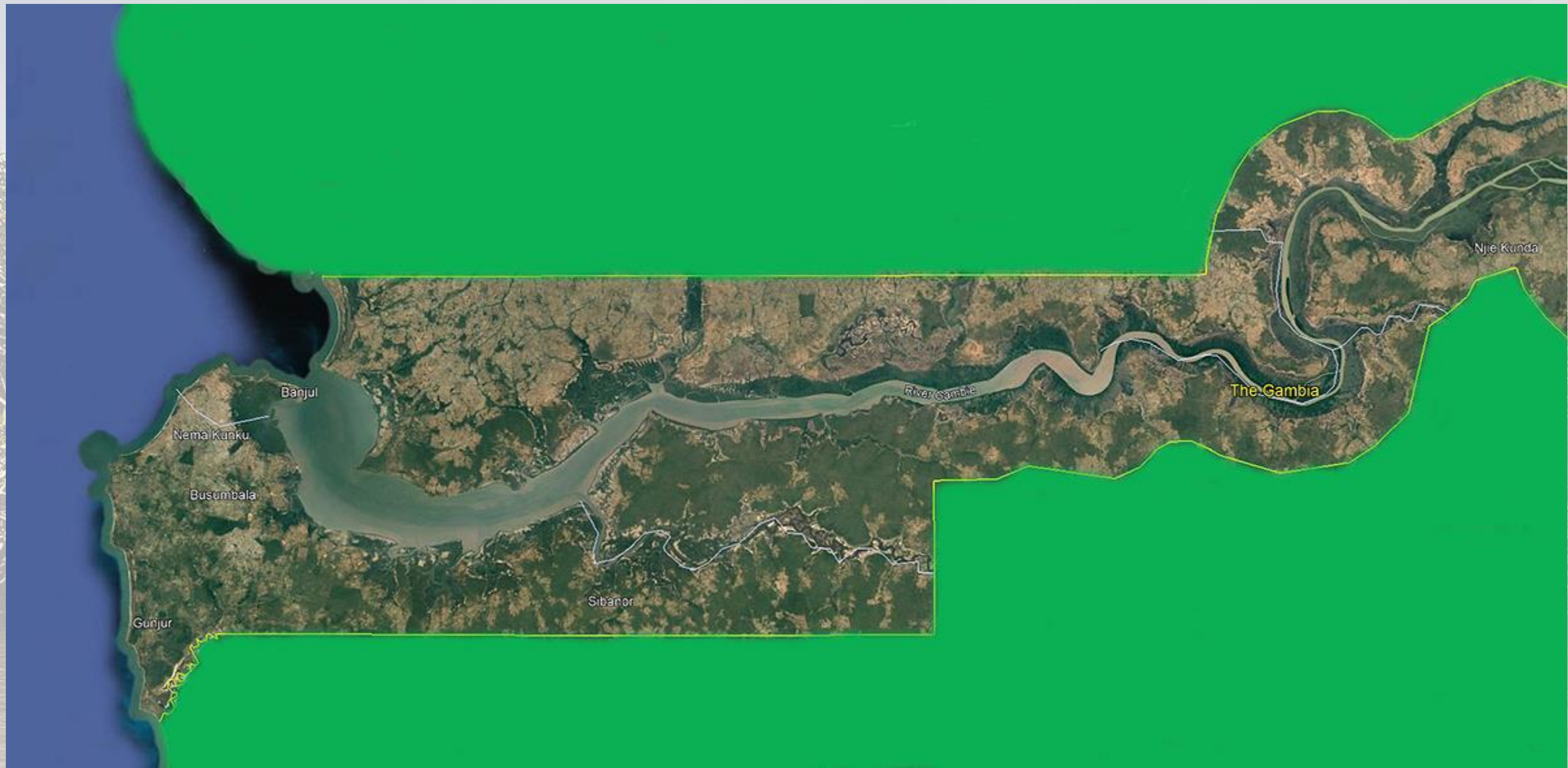


***Rhizophora mangle* Guppy**



***Rhizophora* × *harrisonii* Leechm.**





Tanbi Wetland














Afruca tangeri (Eydoux, 1835)







Periophthalmus barbarus
(Linnaeus, 1766)

Tympanotonos fuscatus
(Linnaeus, 1758)



Potamididae





***Crassostrea tulipa* (Lamarck, 1819)**



Ostreidae - Crassostreinae









Beaches

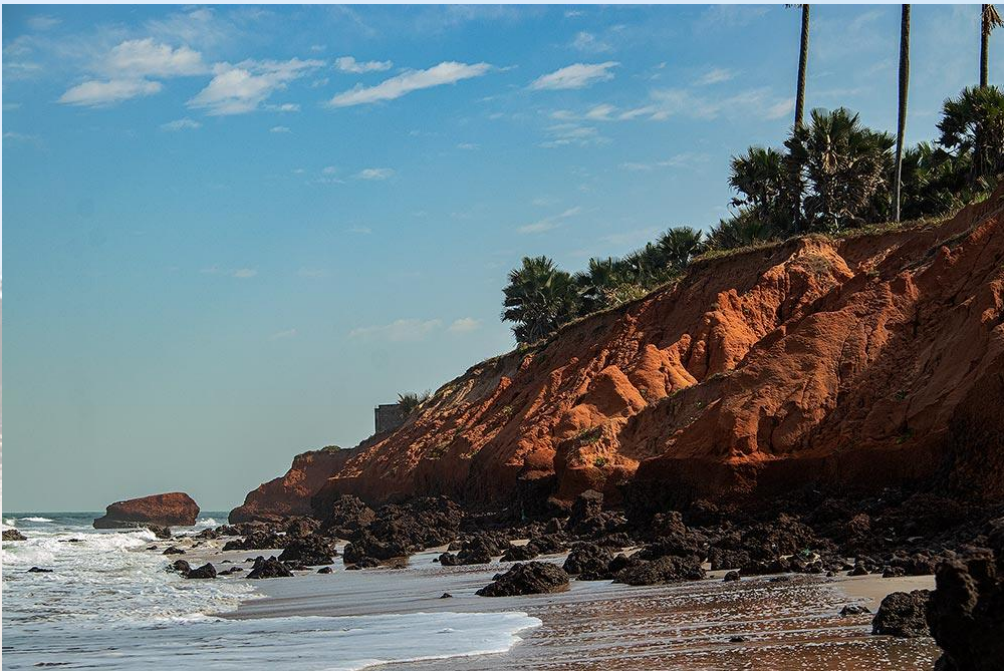




Bijilo Forest Park

Tanji Bird Reserve









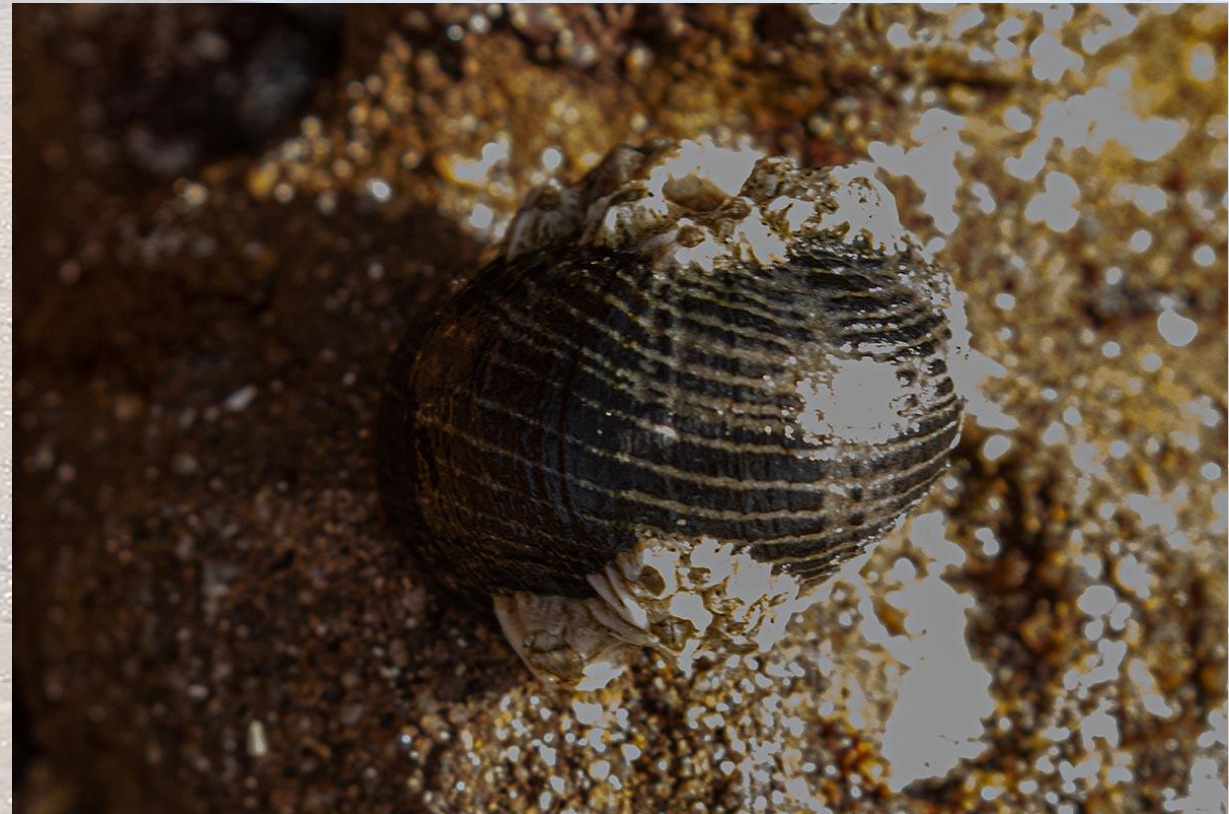
Stramonita haemastoma
(Linnaeus, 1767)



MURICIDAE - Rapaninae



***Nerita senegalensis* Gmelin, 1791**



NERITIDAE - Neritinae

Echinolittorina punctata
(Gmelin, 1791)



LITTORINIDAE - Littorininae



Siphonaria pectinata
(Linnaeus, 1758)



SIPHONARIIDAE

***Cerithium atratum* (Born, 1778)**



CERITHIIDAE



TURRITELLIDAE



Turritella gemmata Reeve, 1849

Inermicosta inermicosta
(E.H. Vokes, 1964)



MURICIDAE - Ocenebrinae

Conus guinaicus Hwass, 1792



CONIDAE

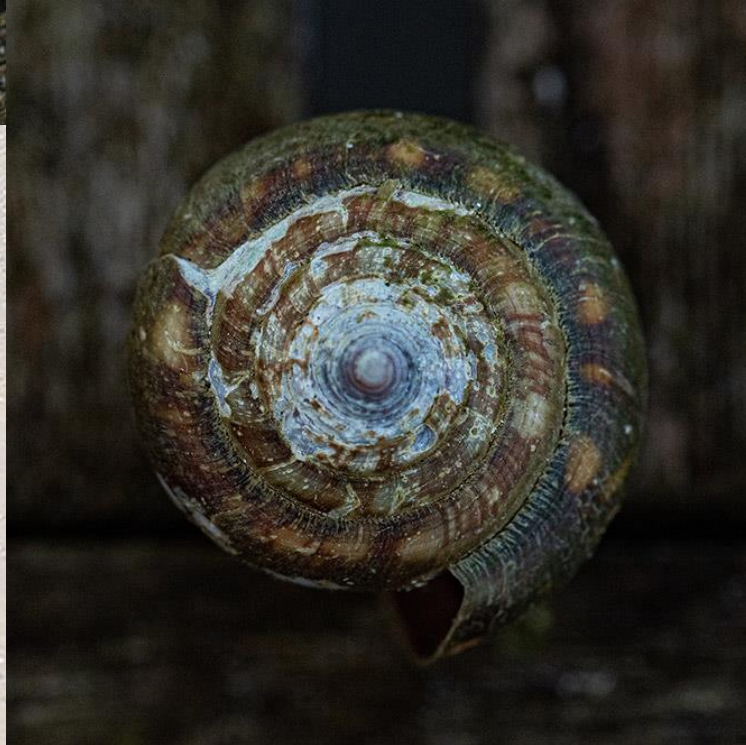


CONIDAE

Conus guinaicus Hwass, 1792



Conus guinaicus
Hwass, 1792



CONIDAE

***Pugilina morio* (Linnaeus, 1758)**



MELONGENIDAE



Brachidontes puniceus (Gmelin, 1791)

MYTILIDAE





***Diplodonta diaphana* (Gmelin, 1791) - UNGULINIDAE**

DONACIDAE



***Donax rugosus* Linnaeus, 1758**

***Aplysia fasciata* Poiret, 1789**



APLYSIIDAE

Callinectes amnicola
(de Rochebrune, 1883)



PORTUNIDAE





Paguroidea
Hermit crabs

In an old shell of
Stramonita haemastoma





ACTINIIDAE

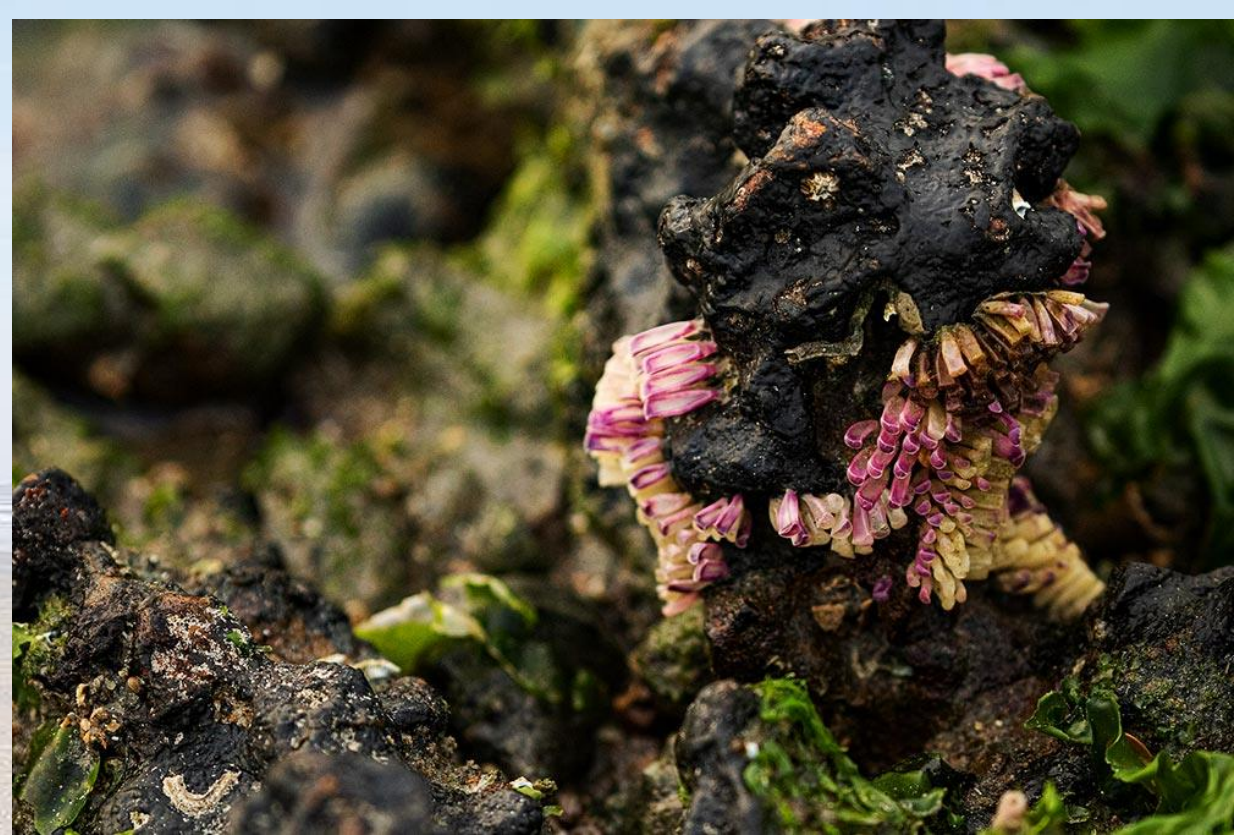




Padina
Phylum Chromista



***Ulva lactuca* Linnaeus, 1753**
Phylum Plantae





Hexaplex rosarium
(Röding, 1798)

MURICIDAE
-
Muricinae







Chilomycterus mauretanicus
(Le Danois, 1954)

RHINOBATIDAE







***Aequipecten flabellum* (Gmelin, 1791)**

PECTINIDAE - Pectininae - Aequipectinini



***Lissochlamys exotica* (Holten, 1802)**

PECTINIDAE - Palliolinae - Palliolini

Cardium costatum
Linnaeus, 1758



Circomphalus foliaceolamellosus
(Dillwyn, 1817)

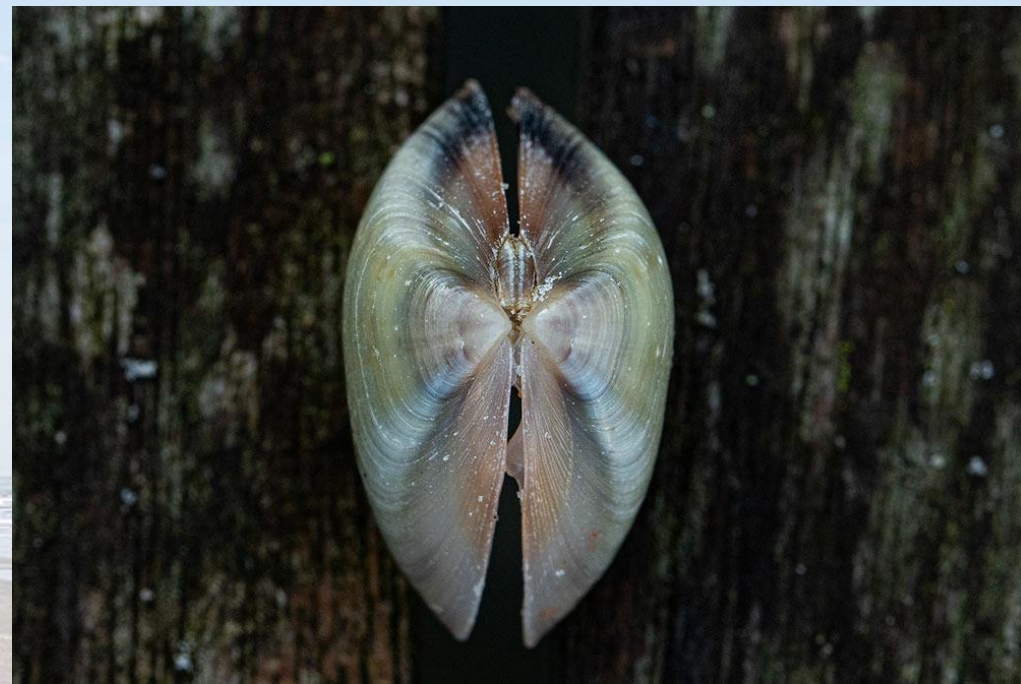


***Cardiocardita tankervillii* (W. Wood, 1828)**

CARDITIDAE

Tivela tripla (Linnaeus, 1771)

VENERIDAE - Meretricinae



Dosinia afra (Gmelin, 1791)

VENERIDAE - Dosiniinae





***Pitar tumens* (Gmelin, 1791)**

VENERIDAE - Callocardiinae

***Tagelus adansonii* (Bosc, 1801)**

SOLECURTIDAE



***Senilia senilis* (Linnaeus, 1758)**



ARCIDAE



Persicula persicula
(Linnaeus, 1758)

Cystiscidae



The image shows two shells of the species *Calyptraea inexpectata* resting on a dark, textured surface, likely a piece of wood or a rock. The shells are light blue or white with distinct concentric growth lines. The larger shell is positioned in the lower right, while the smaller one is in the upper left. The background is a dark, mottled surface with some small, light-colored specks. The overall scene is set against a backdrop of a beach and ocean, visible on the left and right sides of the image.

Calyptraea inexpectata
Rolán, 2004

CALYPTRAEIDAE

Zonaria zonaria (Gmelin, 1791)




Cypraeidae - Zonariinae

Monoplex tranquebaricus
(Lamarck, 1816)



CYMATIIDAE



Cymbium cymbium
(Linnaeus, 1758)




VOLUTIDAE -
Cymbiinae





***Conus pulcher* [Lightfoot], 1786**

CONIDAE

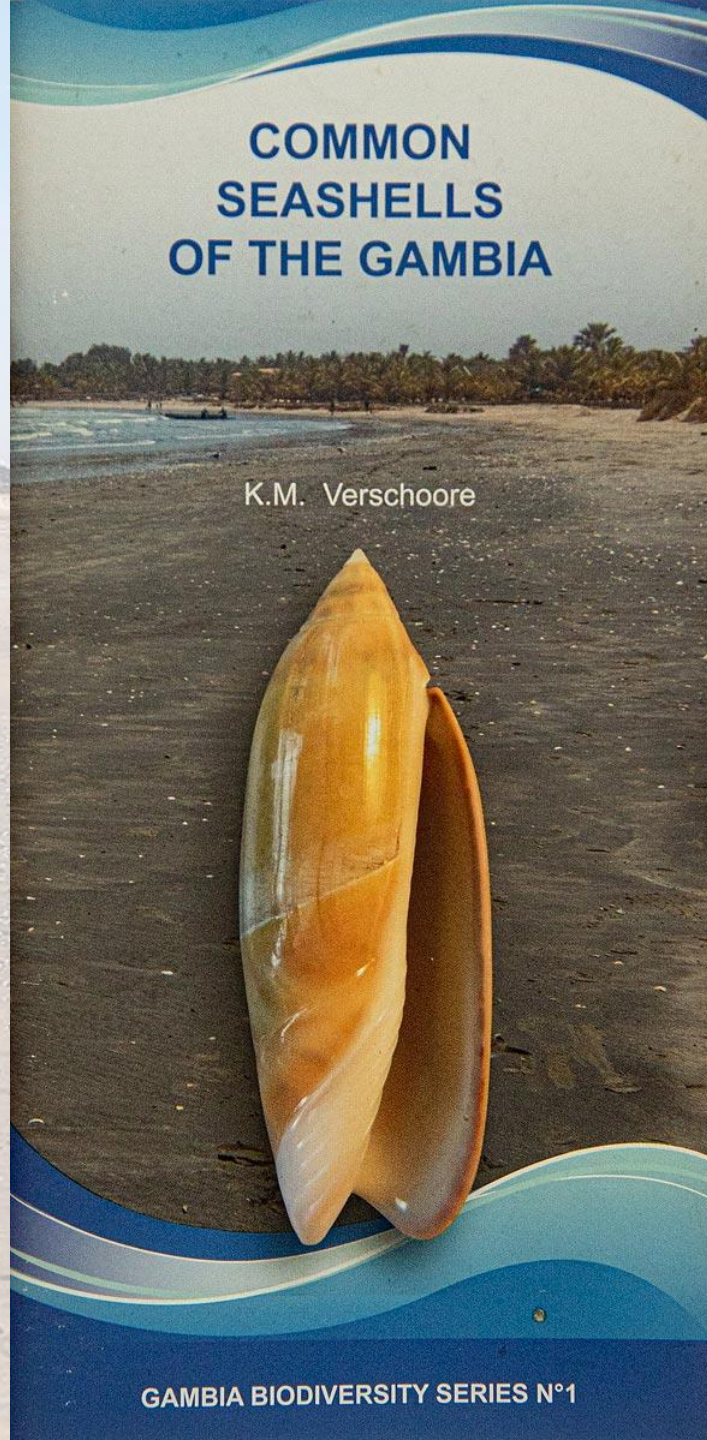


***Agaronia acuminata*
(Lamarck, 1811)**



OLIVIDAE - Agaroniinae

Banjul




Oostende





All records with images of this trip can be found on:

https://www.inaturalist.org/observations?nelat=13.82505802725752&nelng=-13.79138615308929&place_id=any&swlat=13.00989993068721&swlng=-16.94640008973326&user_id=bartwursten&verifiable=any



References:

Ceesay, A., Wolff, M., Njie, E., Kah, M. & Kone, T. (2016): Adapting to the Inevitable: The Case of Tanbi Wetland National Park, The Gambia

Beentje, H. & Bandeira, S. (2007): Fieldguide to the Mangrove Trees of Africa and Madagascar.

Steen, G. (2022): <https://www.hln.be/oostende/gambiaanse-vissersboot-gestrand-in-oostende>

Google Earth (2023): © all satellite maps

Wursten, B. & Ballings, P. (2023): © all images.