



**Haritarium**

Family Code: 269

Species code: 8 - 1A

**Naoroji Godrej Centre for Plant Research**

**Beilschmiedia dalzellii (Meisn) Kosterm.**

**Botanical name:** *Beilschmiedia dalzellii* (Meisn.) Kosterm.

(=*B. fagifolia* Bedd. Var. *dalzellii* Meissn.)

**Family:** Lauraceae

**Vernacular name:** Umber

**Threatened category:** Endangered

**Key characters:** Evergreen tree, Leaves penninerved, perianth, glabrous, deciduous, Anthers two celled, third row extrorse.

**Description:** Trees, 8- 20 m tall, old trees buttressed. Young parts glabrous, Leaves coriaceous 5-15X 2.5-6.0 cm, elliptic-ovate to ovate-lanceolate, leathery, glabrous above, reticulate veined beneath, base tapering; main nerves about 10 pairs. Flowers small, greenish-brown, in axillary panicles; Perianth 6; stamens 9, in three rows; outer 2 whorls introrse, 3<sup>rd</sup> whorl extrorse, staminodes in 4<sup>th</sup> whorl. Ovary, pubescent, tapering into the style. Fruits smooth, ovoid or ellipsoid, up to 3.5 X 1.6 cm, dark brown when dry.

**Flowering and fruiting:** November-June.

**Distribution:** India- Endemic to Western Ghats.

**Localities:** Kolhapur, Pune, Raigad, Ratnagiri, Satara, Sindhudurg, and Thane.

**Ecology:** Rarely found in protected semi-evergreen forests, valley regions and sacred groves. Altitude ranges between 600-1200m. The fruits are eaten by gaint squirrel.

**Association:** No specific plant association is observed.



**Haritarium**

Family Code: 269

Species code: 8 - 1B

**Naoroji Godrej Centre for Plant Research**

***Beilschmiedia dalzellii* (Meisn) Kosterm.**



1.Habit, 2. Fruiting branch, 3. Fruit, 4. Leaf: dorsal side, 5. Leaf: ventral side



**Haritarium**

Family Code: 269

Species code: 8 - 1C

**Naoroji Godrej Centre for Plant Research**

**Beilschmiedia dalzellii (Meisn) Kosterm.**





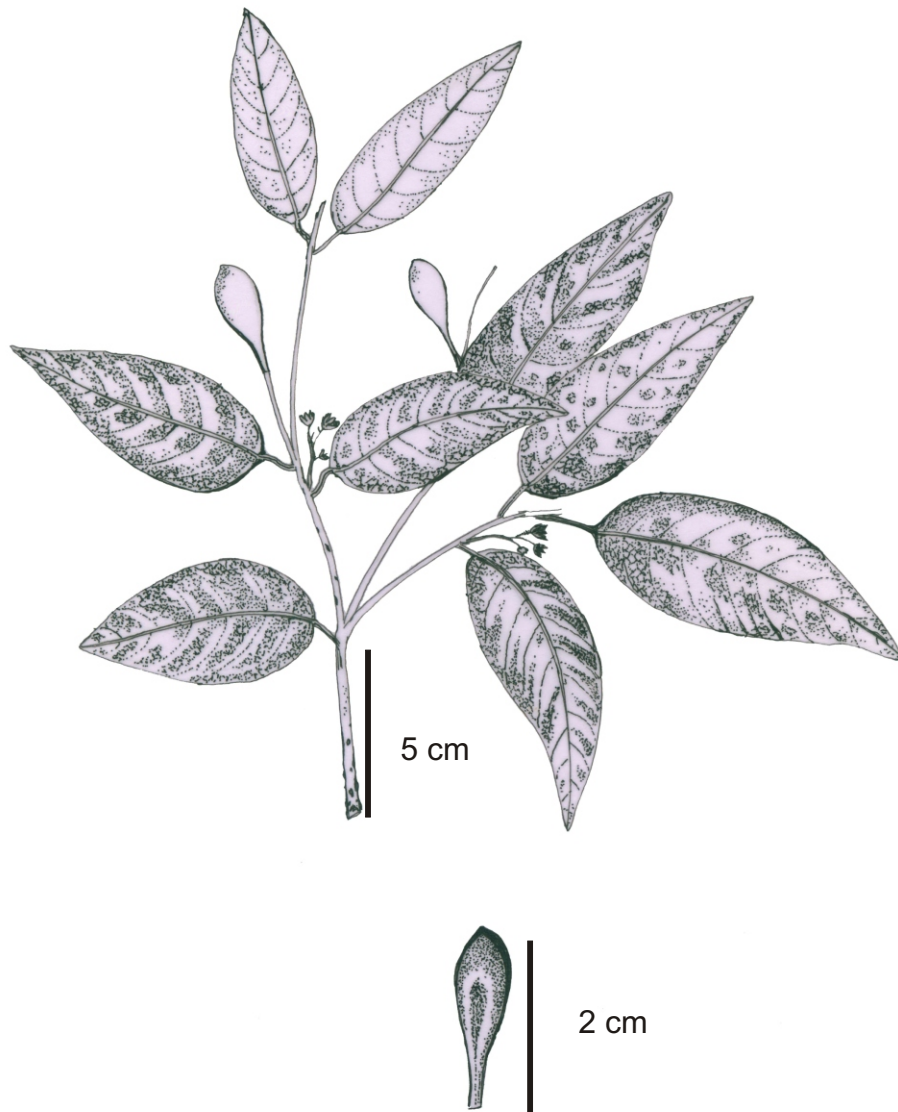
**Haritarium**

Family Code: 269

Species code: 8 - 1D

**Naoroji Godrej Centre for Plant Research**

***Beilschmiedia dalzellii* (Meisn) Kosterm.**



1. Habit, 2. Fruit



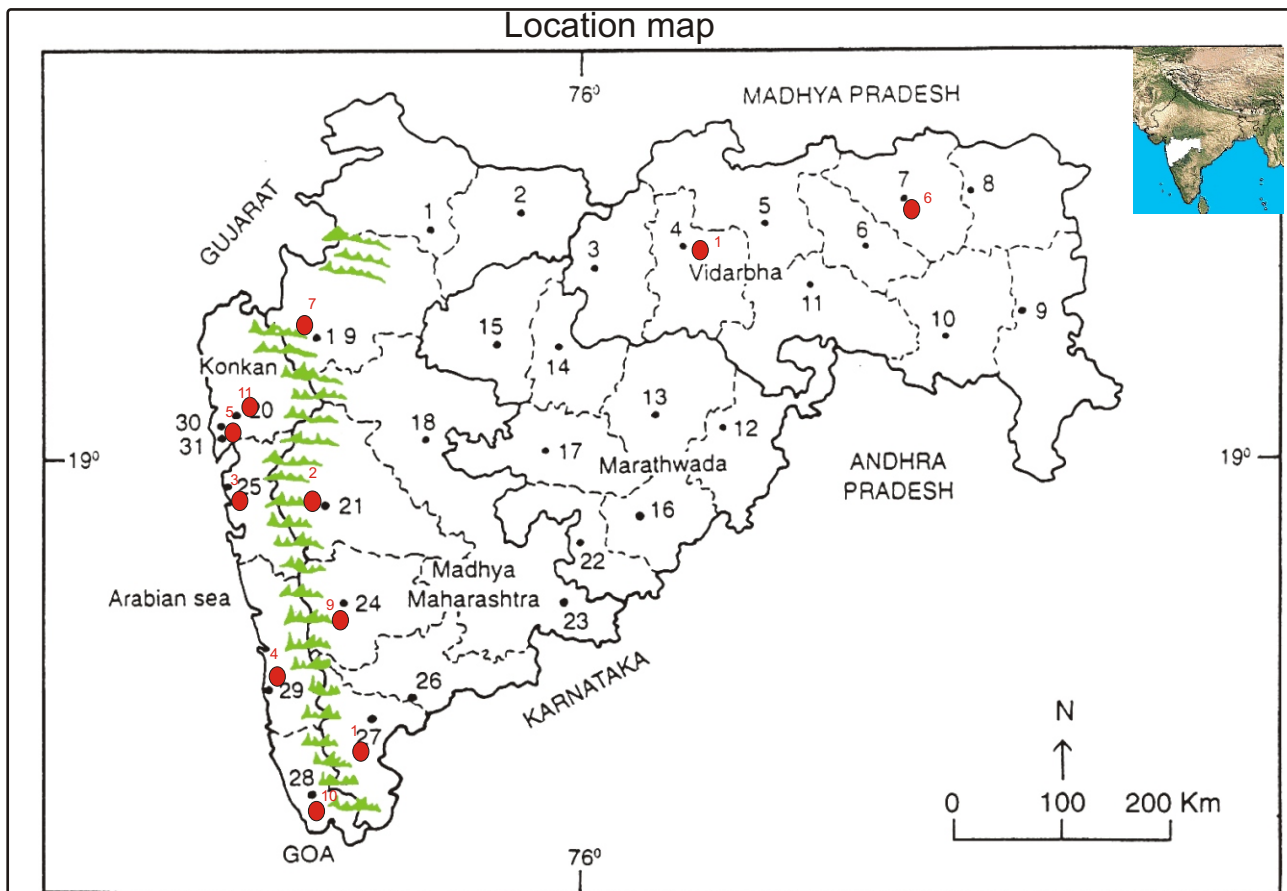
**Haritarium**

Family Code: 269

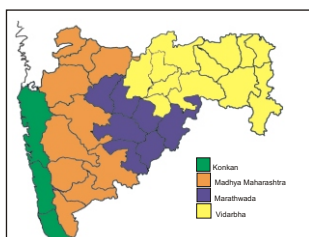
Species code: 8 - 1E

**Naoroji Godrej Centre for Plant Research**

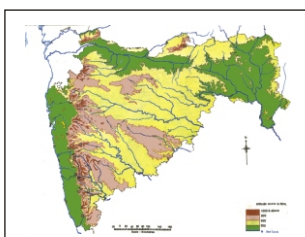
**Beilschmiedia dalzellii (Meisn)Kosterm.**



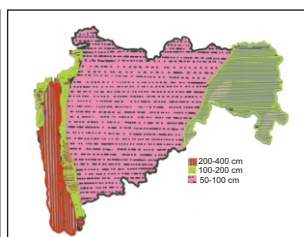
1.Dhule 2.Jalgaon 3. Buldhana 4.Akola 5.Amaravati 6.Wardha 7.Nagpur 8. Bhandara 9. Gadchiroli  
 10. Chandrapur 11. Yavatmal 12. Nanded 13. Parbhani 14. Jalna 15. Aurangabad 16.Latur  
 17. Beed 18. Ahmadnagar 19 Nashik 20. Thane 21. Pune 22. Osmanabad 23. Solapur 24.Satara  
 25. Raigad 26.Sangli 27. Kolhapur 28. Sindhudurg 29. Ratnagiri 30.Mumbai 31.Greater Mumbai.



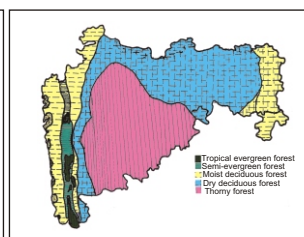
Geographical regions 1



Physical map 2



Rain fall map 3



Forest types 4

Localities- ●

1. Akola, 2. Dhule, 3. Jalgaon, 4. Kolhapur, 5. Mumbai, 6. Nagpur, 7. Nasik,  
 8. Pune, 9. Satara, 10. Sindhudurg, 11. Thane.

Geographical distribution in Maharashtra:

Latitude (DMS): Between 17° 49' -21° 53' N & Longitude (DMS): 72° 58' -79° .05' E.



**Haritarium**

Family Code: 269

Species code: 8 - 1F

**Naoroji Godrej Centre for Plant Research**

**Beilschmiedia dalzellii (Meisn) Kosterm.**

**References:**

Cooke. T (1904): **Flora of Presidency of Bombay**. Vol.3: 27. (rep. Ed.1958)

Gaikwad S.P. & S.R. Yadav(2004): in T. Pullaiah (ed.)Endemic flowering plant species of Maharashtra and their possible utilization; **Biodiversity in India**, Regency publications, New Delhi:44.

Hooker, J.D. *et al.*(1890):**The flora of British India**. London. Vol.5: 122.

Singh N.P. & S. Karthikeyan (2000):(eds), **Flora of Maharashtra state, Dicotyledones**.Vol. 2: . B.S.I., Calcutta:825

Tetali, *et al.* (2000): **Endemic Plants of India (A Status Report of Maharashtra State)**. Naoroji Godrej Centre for Plant Research, Shirwal: 16.