



Haritarium

Family Code: 522

Species code: 2-2A

Naoroji Godrej Centre for Plant Research

Crinum eleonora Blatt. & McCann

Botanical name: *Crinum eleonora* Blatt. & McCann

Vernacular name: -

Family : Amaryllidaceae

Threatened category: Endemic & Rare (Nayar & Sastry 1987)
Extinct(?)(Gaikwad & Yadav 2004)

Key characters: Leaves ensiform, flowers up to 20, funnel shaped perianth, nodding perianth .

Description: Herbs, bulbous, scapigerous , Bulbs ovoid or spherical upto 20 X 13 cm, narrowed into stout neck, leaves appear after it flowers ensiform upto 60 X 5 cm, apex obtuse, dark green, glabrous. Scape lateral, cylindrical, green, tinged with purple, 50 cm long, Bracts broadly lanceolate inflexed green, tinged purple; Flowers white, upto 20 in umbel, mildly fragrant, nodding, Perianth funnel-shaped, tube 6.5 cm long, cylindrical at base, lobes lanceolate, upto 7.5 cm long, inner sometimes oblanceolate, cuspidate, filaments from throat of Perianth tube, free, stamens 6, dorsifixed brown coloured turning black after dehiscence, stigma purple coloured, 5 cm long. Fruit green, tinged with pink, spherical, broadly ovoid.

Flowering and fruiting: May-June.

Distribution: Endemic to Maharashtra- Known from a single locality

Reported Localities: Satara (Mahabaleshwar-Lingmala).

Ecology: Among small grasses, on open hill slopes located at the crest of Western Ghats, surrounded by a close sub tropical evergreen forest . Cattle also seen grazing in the locality. Restricted to high altitudes and crest of Ghats mostly due to pest problems. Altitude ranges between 900-1200 and above.

Association: No specific plant association is observed.



Haritarium

Family Code: 522

Species code: 2-2B

Naoroji Godrej Centre for Plant Research

Crinum eleonora Blatt. & McC.



1. Habitat, 2. Flower, 3.,&4. Dissected flower, 5. Gynoecium, 6. Anther, 7. Tip of stigma, 8. Close-up view of Anther.



Haritarium

Family Code: 522

Species code: 2-2C

Naoroji Godrej Centre for Plant Research

Crinum eleonora Blatt. & McC.





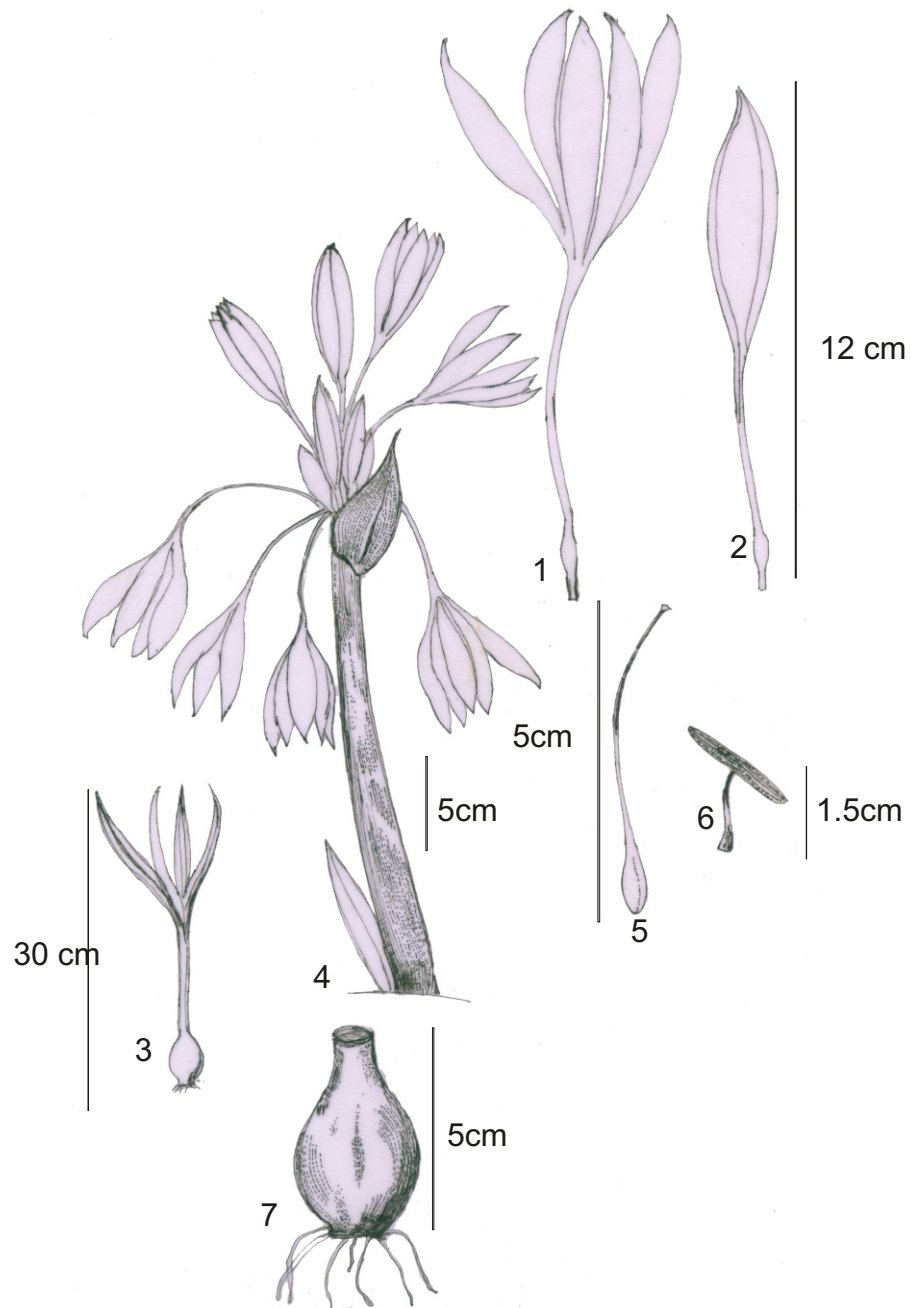
Haritarium

Family Code: 522

Species code: 2-2D

Naoroji Godrej Centre for Plant Research

Crinum eleonora Blatt. & McC.



1. Flower, 2. Bud., 3. & 4. Habit, 5. Gynoecium, 6. Anther 7. Bulb.



Haritarium

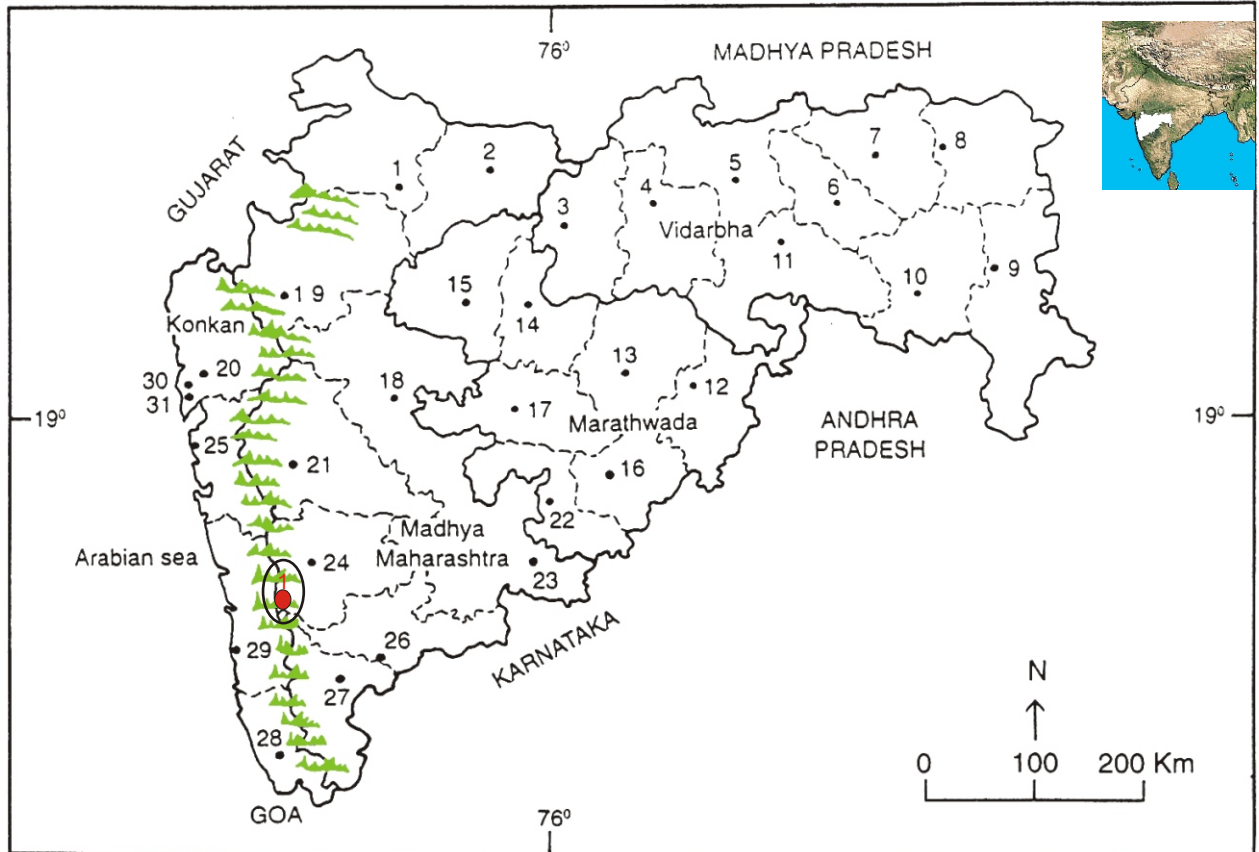
Family Code: 522

Species code: 2-2E

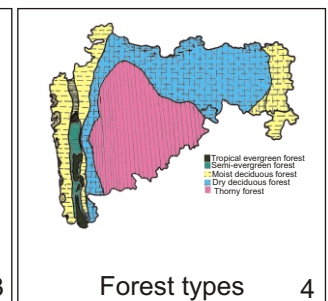
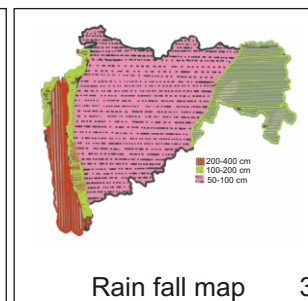
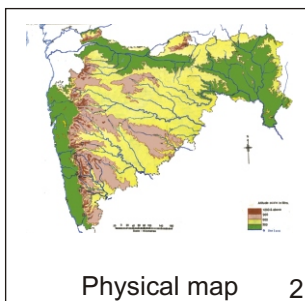
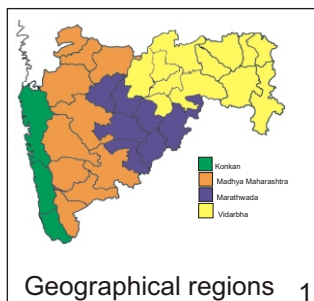
Naoroji Godrej Centre for Plant Research

Crinum eleonora Blatt. & McC.

Location map



1.Dhule 2.Jalgaon 3. Buldhana 4.Akola 5.Amaravati 6.Wardha 7.Nagpur 8. Bhandara 9. Gadchiroli
 10. Chandrapur 11. Yavatmal 12. Nanded 13. Parbhani 14. Jalna 15. Aurangabad 16.Latur
 17. Beed 18. Ahmadnagar 19 Nashik 20. Thane 21. Pune 22. Osmanabad 23. Solapur 24.Satara
 25. Raigad 26. Sangli 27. Kolhapur 28. Sindhudurg 29. Ratnagiri 30.Mumbai 31.Greater Mumbai.



Distribution in following districts ●

1.Mahabaleshwar (Satara).

Geographical distribution in Maharashtra:

Latitude (DMS): 17° 55' N & Longitude (DMS): 73° 40' E.



Haritarium

Family Code: 522

Species code: 2-2F

Naoroji Godrej Centre for Plant Research

Crinum eleonora Blatt. & McC.

References:

Blatter, E. & McCann, C.(1928). Some new species of plants from the Western ghats.
J.Bombay Nat. Hist. Soc. 32(4):733-34.

Laxminarasimhan, P.(1996): in B.D. Sharma, S. Karthikeyan & N.P.Singh (eds), **Flora of Maharashtra state, Monocot.** B.S.I., Calcutta:94.

Nayar M.P. & A.R.K. Sastry (1987): Red Data book of Indian Plants. Vol.I. B.S.I. Calcutta: 22.

Tetali, *et al.* (2000): **Endemic Plants of India (A Status Report of Maharashtra State)**. Naoroji Godrej Centre for Plant Research, Shirwal: 780.

Yadav, S.R.(1997): Endemic plants of peninsular India with special reference to Maharashtra, in Pokle D.S., S.P. Kanir & V.N. Naik (eds.) **Proceedings, VII IAAT Annual Meet and National Conference**, Aurangabad:50.