



**Haritarium**

Family Code: 570

Species code: 10 - 5A

**Naoroji Godrej Centre for Plant Research**

**Drimia wightii** Lakshmin.

**Botanical name:** *Drimia wightii* Lakshmin.

(= *Urginea congesta* Wight; *Drimia congesta* (Wight) Ansari & Raghavan).

**Vernacular name:** -

**Family :** Hyacinthaceae

**Status:** Endemic<sup>5</sup>.

**Key characters:** Underground broadly ellipsoid-oblong or ovate bulbs with long collar. Leaves hysteranthous. Racemes small, congested, pyramidal. Flowers pinkish yellow. Perianth with a pinkish median band. Anthers & pollen yellow; filaments shorter than anthers.

**Description:** Bulbs 4-9 X 3-7 cm, broadly ellipsoid-oblong or ovate; outer scales white, inner scales cream coloured, fleshy; collar 2-7 cm long, stout, covered with brown scales. Leaves up to 9, lanceolate, acute, thick, overtopping the scape, 18-26 X 1.0-2.1 cm, veins usually 10 (sometimes 9). Scape 2-12 cm long (excluding the collar), pinkish-brown coloured. Racemes 2-6 cm long, pyramidal, 7-30-flowered. Flowers 6-9 mm long, pinkish-yellow. Pedicels 2-6 mm long, light pinkish green. Bracts 1-1.5 X 1 mm, deltoid, spurred, yellowish-brown. Perianth lobes 5-7 X 2-4 mm, oblong, coriaceous, with a pinkish median band. Anthers 1-5 mm long, dorsifixed, pollen yellow, filaments 1-3.5 mm long, versatile. Ovary 2-4 mm long, oblong, style 2-5 mm long, yellow. Capsules 5-10 X 6-8 mm, ovoid-ellipsoid. Seeds 5-10 X 4-6 mm, ellipsoid-oblong, or ovoid, six in each locule, closely arranged, broadly winged, wings hyaline, shining black at maturity, bracts marcescent and remain at the apex of capsule.

**Flowering and fruiting:** April – May.

**Distribution:** India :Maharashtra, Andhra Pradesh & Tamilnadu.

**Reported Localities:** Maharashtra - A. Pune (1. Pune ), B. Satara (2. Khambataki ), C. Kolhapur (3. Kolhapur).

**Ecology:** Rarely found growing in small populations on exposed rocky surfaces and gravelly hill slopes. The natural habitat receives very low rainfall. Flowering initiation takes place in summer immediately after the hill slopes are burnt to clear the unwanted vegetation. Flowers remain open between 8 am – 5 pm. Dipteran flies are pollinators and visit the flowers between 9 am – 2 pm.

**Association:** No specific plant association is observed.



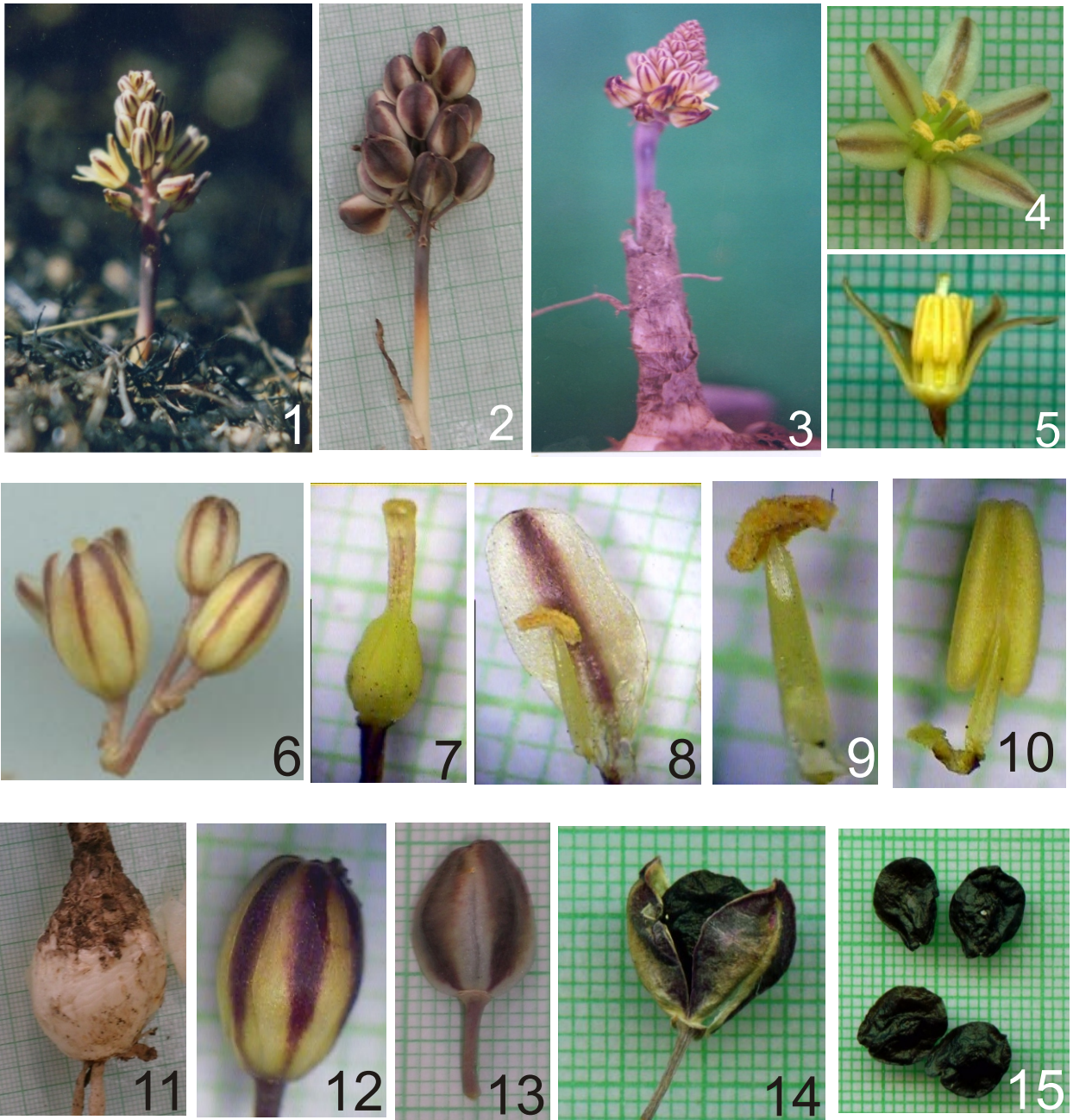
# Haritarium

Family Code: 570

Species code: 10 - 5B

## Naoroji Godrej Centre for Plant Research

### *Drimia wightii* Lakshmin.



1.Habit, 2.Fruiting scape, 3.Long Collar & pyramidal raceme, 4.Flower, 5.Dissected flower, 6.Inflorescence, 7.Gynoecium, 8. Anther with perianth, 9.&10. Anther, 11.Bulb, 12. Flower bud, 13. &14. Capsule, 15.Seeds.



**Haritarium**

Family Code: 570

Species code: 10 - 5C

Naoroji Godrej Centre for Plant Research

***Drimia wightii*** Lakshmin.





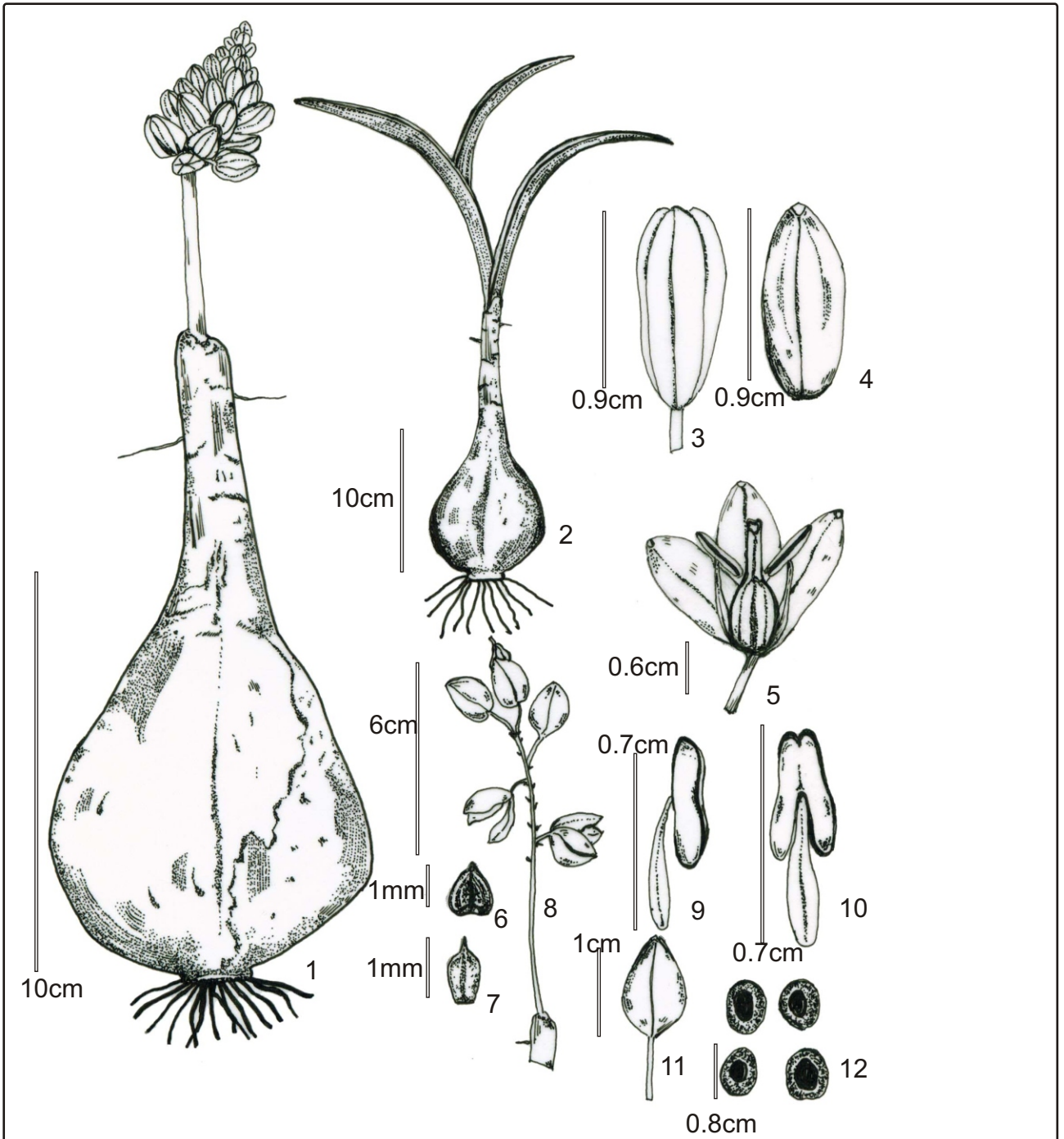
**Haritarium**

Family Code: 570

Species code: 10 - 5D

**Naoroji Godrej Centre for Plant Research**

***Drimia wightii* Lakshmin.**



1. & 2. Habit, 3. Flower, 4. Perianth lobe, 5. Dissected flower, 6. & 7. Bracts, 8. Fruiting scape, 9. & 10. Anthers, 11. Capsule, 12. Seeds.



**Haritarium**

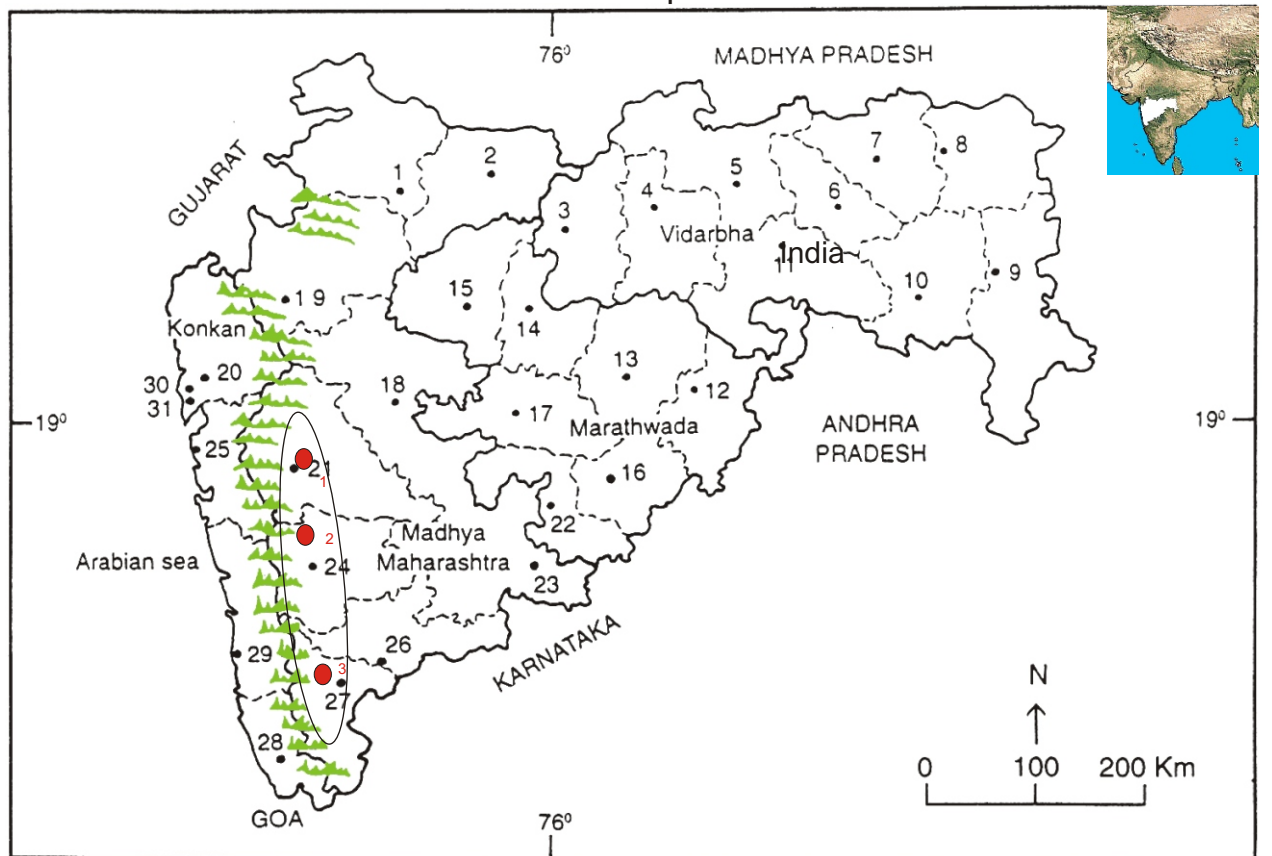
Family Code: 570

Species code: 10 - 5E

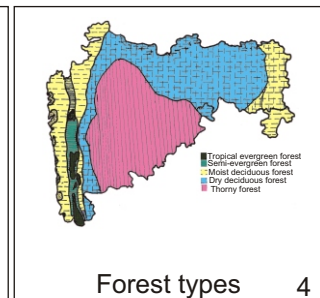
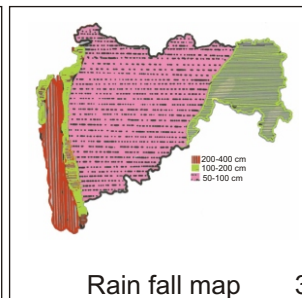
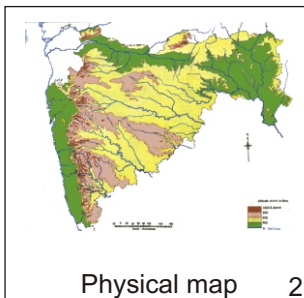
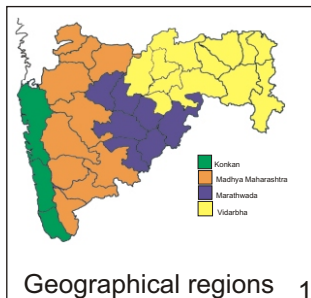
**Naoroji Godrej Centre for Plant Research**

***Drimia wightii* Lakshmin.**

**Location map**



- 1.Dhule 2.Jalgaon 3. Buldhana 4.Akola 5.Amaravati 6.Wardha 7.Nagpur 8. Bhandara 9. Gadchiroli  
 10. Chandrapur 11. Yavatmal 12. Nanded 13. Parbhani 14. Jalna 15. Aurangabad 16.Latur  
 17. Beed 18. Ahmadnagar 19 Nashik 20. Thane 21. Pune 22. Osmanabad 23. Solapur 24.Satara  
 25. Raigad 26.Sangli 27. Kolhapur 28. Sindhudurg 29. Ratnagiri 30.Mumbai 31.Greater Mumbai.



Localities- ●

A.Pune(1- Pune),B. Satara (2-Khambataki ghat), C. Kolhapur (3-Kolhapur)

Geographical distribution:

Latitude (DMS): Between 18 ° 31' - 16 ° 06' N & Longitude (DMS): 73 ° 46'-74 ° E;



**Haritarium**

Family Code: 570

Species code: 10 - 5F

**Naoroji Godrej Centre for Plant Research**

***Drimia wightii* Lakshmin.**

**References:**

1. Ansari, M.Y. & Raghavan (1980): *J. Bombay nat. Hist. Soc.* **78**:572-574.
2. Deb D.B. & S. Dasgupta (1974) 1977: Revision of the genus *Urginea* Steinhil (Liliaceae) Bull. Bot. Surv. India **16**:116 -124.
3. Deb D.B. & S. Dasgupta (1981): Liliaceae: Tribe Scilleae. *Fasc. Fl. India* **7**:1-23. B.S.I., Calcutta.
4. Laxminarasimhan, P.(1996): in B.D. Sharma, S. Karthikeyan & N.P.Singh (eds), **Flora of Maharashtra state, Monocot**. B.S.I., Calcutta: 134.
5. Laxminarasimhan, P.(2003): A new name for *Drimia congesta* (Wight) Stearn (Hyacinthaceae). Kew bulletin:
6. Rajgopal T. & P. Satyanarayana Reddy (1977): Taxonomic observations on *Urginea congesta* Wight, *Indian bot. Repr.*(1):32-35.
7. Tetali, *et al.* (2000): **Endemic Plants of India ( A Status Report of Maharashtra State)**. Naoroji Godrej Centre for Plant Research, Shirwal: 78.
8. Yadav, S.R. & M.M. Sardesai (2002): **Flora of Kolhapur District**, Shivaji University:680.