



Haritarium

Family Code: 35

Species code: 5 -1A

Naoroji Godrej Centre for Plant Research

Frerea indica Dalzell

Botanical name: *Frerea indica* Dalzell
(=*Caralluma frerei* Rawley)

Family : Ascepiadaceae

Threatened category: Endangered, Critically endangered (Mishra & Singh, 2001, Gaikwad & Yadav, 2004)

Key characters: Succulent herb, Corolla rotate, Corona double, staminal, anthers incumbent on the style apex without a membranous appendage.

Description: Fleshy glabrous herb. Leaves 3-6 cm long. Flowers brick red, solitary or in pairs, pedicels arising from between the petioles. Corolla rotate, about 2.4 cm across, lobes valvate, deltoid, fringed with fine purple hairs, designed with a variety of striation and spots. Corona purple. Anthers red. Pollinia one in each cell. Style-apex pearly white.

Flowering and fruiting: July to December.

Distribution: Endemic to Maharashtra.

Reported Localities: Ahmednagar (Radha falls), Pune (Junnar Purandar), Raigad (Shivthar Ghal), Satara (Mahabaleshwar, Sajjan gadh) districts.

Ecology: Grows on steep hill slopes.

Association: It has strong and positive association with *Euphorbia neriifolia* L.



Haritarium

Family Code: 35

Species code: 5 -1B

Naoroji Godrej Centre for Plant Research

***Frerea indica* Dalzell**



1, & 2. Habit, 3. Follicles, 4. Leaf- Dorsal view, 5. Leaf-ventral view, 6. Seed, 7. Pollinia, 8-19 Floral variation



Haritarium

Family Code: 35

Species code: 5 -1C

Naoroji Godrej Centre for Plant Research

Frerea indica Dalzell



Frerea india Dalz.



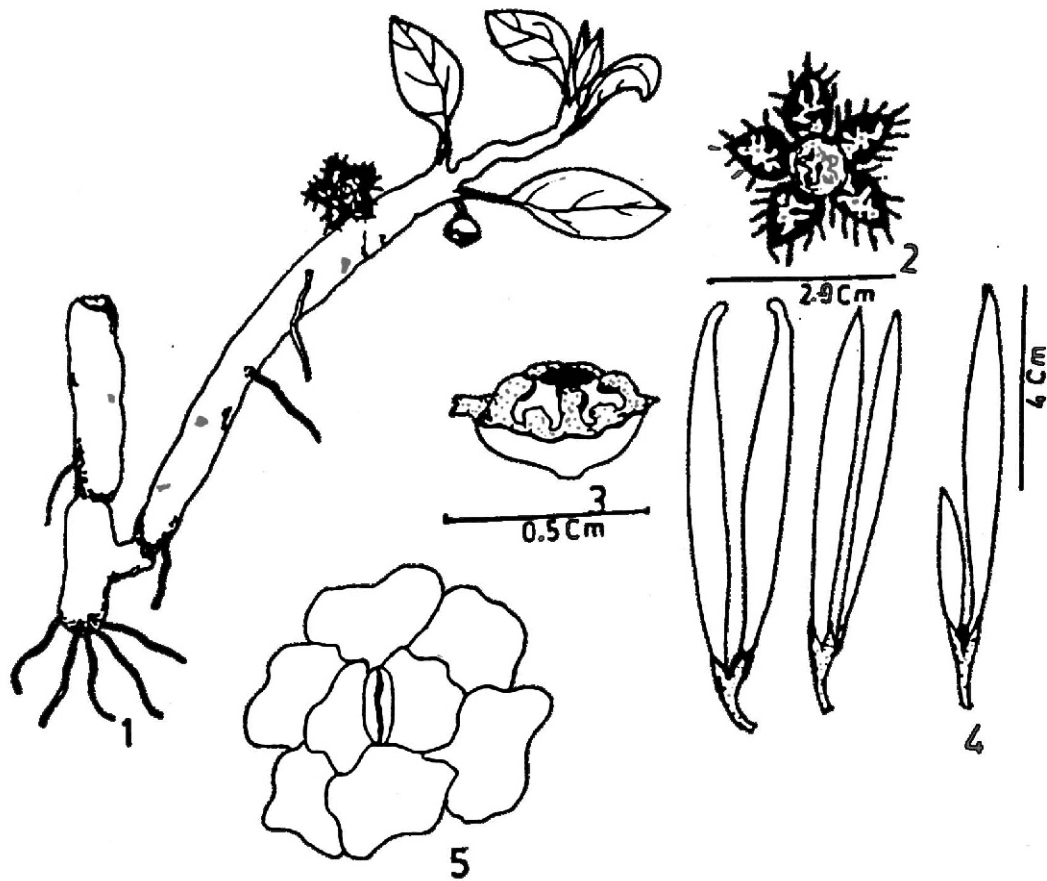
Haritarium

Family Code: 35

Species code: 5 -1D

Naoroji Godrej Centre for Plant Research

***Frerea indica* Dalzell**



1.Habit, 2. Flower 3.Pollinia 4. Follicle 5. Stomata.



Haritarium

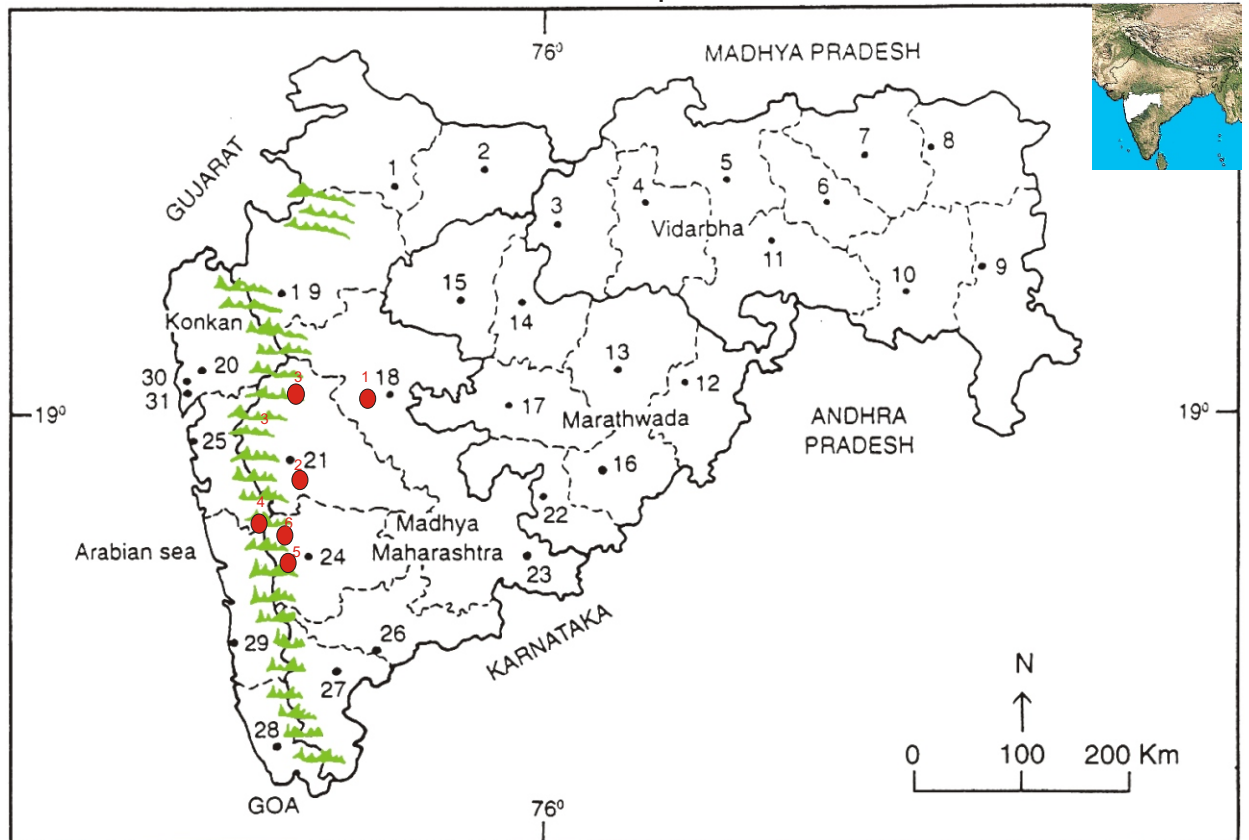
Family Code: 35

Species code: 5 -1E

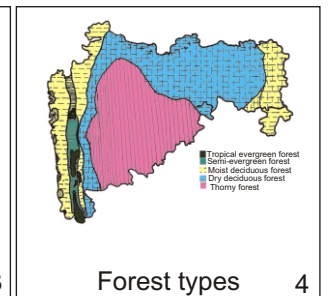
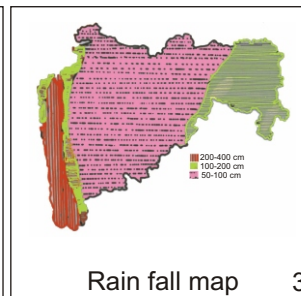
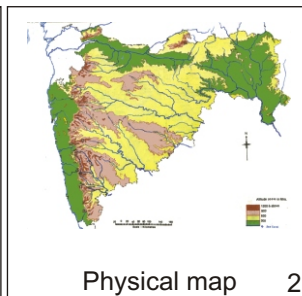
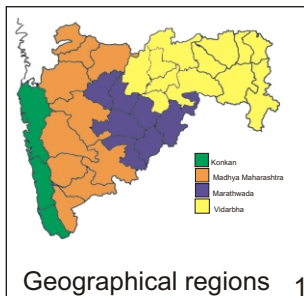
Naoroji Godrej Centre for Plant Research

Frerea indica Dalzell

Location map



1.Dhule 2.Jalgaon 3. Buldhana 4.Akola 5.Amaravati 6.Wardha 7.Nagpur 8. Bhandara 9. Gadchiroli
10. Chandrapur 11. Yavatmal 12. Nanded 13. Parbhani 14. Jalna 15. Aurangabad 16.Latur
17. Beed 18. Ahmadnagar 19 Nashik 20. Thane 21. Pune 22. Osmanabad 23. Solapur 24.Satara
25. Raigad 26. Sangli 27. Kolhapur 28. Sindhudurg 29. Ratnagiri 30.Mumbai 31.Greater Mumbai.



Localities- ●
A. Ahmednagar(1-Radha falls), B. Pune(2-Junnar,3-Purandar), C.Raigad (4-Shivathar Ghal) D. Satara(5-Mahabaleshwar, 6- Sajjangad).

Geographical distribution in Maharashtra:

Latitude (DMS): 19° 11'-17° 55' N & Longitude (DMS): 73° 50' -74° 43'E.



Haritarium

Family Code: 35

Species code: 5 -1F

Naoroji Godrej Centre for Plant Research

Frerea indica Dalzell

References:

- Ahmedullah, M & M.P. Nayar (1987): **Endemic Plants of the Indian Region** B.S.I. Calcutta, vol.1:120.
- Blatter, E. & C.McCann(1932): Revision of the Flora of the Bombay Presidency, in *J. Bombay nat. Hist. Soc.*, **36**(3): 536.
- Cooke, T. (1904): **The Flora of Presidency of Bombay**. Vol.2: 243. (rep. Ed.1958).
- Dalzell, N.A. (1865): A new genus of Asclepiadaceae. *Jour. Linn. Soc.*8:10t.3.
- Deshpande, S.D., B.D.Sharma & M.P.Nayar (1995) **Flora Mahabaleshwar and adjoining, Maharashtra**, B.S.I. Calcutta, Vol.1: 363.
- Gaikwad S.P. & S.R. Yadav(2004): in T. Pullaiah (ed.)Endemic flowering plant species of Maharashtra and their possible utilization; **Biodiversity in India**, Regancy publications, New Delhi:43.
- Hooker, J.D. *et al.*(1883):**The flora of British India**. London. Vol.4: 76.
- Jagtap, A. P. (1992): Revision of family Asclepiadaceae of India 2 vols. Ph.D.Thesis (*ined.*)
- Jagtap, A.P. & N.P.Singh(1998): *J.Econ. Tax. Bot.*,**22**(1):232.
- Jagtap, A.P. & N.P.Singh(1999): Asclepiadaceae., **Fasc. Fl. India 24**: 243.
- Jain, S.K. & A.R.K. Sastry(1982): *Threatened plants of India, A State of the art Report*. B.S.I., Calcutta.
- Kothari, M.J. & S. Moorthy(1993). **The Flora of Raigad district, Maharashtra State.**, Botanical Survey of India, Calcutta:232.
- Kumbhojkar, M.S. & D.K.Kulkarni & D.S. Nipunage(1986). Report on anew locality of endemic *Frerea indica* Dalz. In Satara District. *Ind.J.For.*16:85-86.
- McCann, C.(1939): *J. Bombay Nat. Hist. Soc.*, Vol.41: 143-145.
- Nayar, M.P. & A.R.K. Sastry (1987): **Red Data Book on Indian Plants.**, (eds), B.S.I. Calcutta Vol.1:87.
- Raghavan, R. S. and N.P. Singh (1983): in S.K. Jain & A.R.K. Sastry (eds.) *Plant. Cons. Bull.*, Vol. **3**: 9.
- Santapau, H. & N.A. Irani (1962).The Asclepiadaceae & Periplocaceae of Bombay, in *Univ. Bombay Bot. Memories*. 4:44.
- Singh N.P. & S. Karthikeyan (2000):(eds), **Flora of Maharashtra state, Dicotyledones**.Vol. 2: . B.S.I., Calcutta:361-362.
- Tetali P., Sujata Tetali, D.K. Kulkarni, M.S. Kumbhojkar (1997): Association of *Frerea indica* Dalz. – an endangered plant species with *Euphorbia neriifolia* L.and its importance in habitat conservation *Curr.Sci.*,**73**(7):563 – 565.
- Tetali P., Sujata Tetali, D.K. Kulkarni, M.S. Kumbhojkar (1997): Status and Conservation studies for *Frerea indica* Dalz., *J. Bombay Nat. Hist. Soc.*94(1):115-121.
- Tetali, *et al.* (2000): **Endemic Plants of India (A Status Report of Maharashtra State)**. Naoroji Godrej Centre for Plant Research, Shirwal: 33.
- Vajravelu, E. & P. Daniel (1983):In S.K. Jain & A.R.K. Sastry(eds), Materials for a catalogue of threatened plants of India B.S.I.Calcutta:28.
- Yadav, S.R.(1997): Endemic plants of peninsular India with special reference to Maharashtra, in Pokle D.S., S.P. Kanir & V.N. Naik (eds.) **Proceedings, VII IAAT Annual Meet and National Conference**, Aurangabad:41.