



Haritarium

Family Code: 1
Species code: 24 - 1A

Naoroji Godrej Centre for Plant Research

Haplanthodes verticillatus (Roxb.) R. B. Mujumdar

Botanical name: **Haplanthodes verticillata** (Roxb.) R. B. Mujumdar
(=*Haplanthus verticillata* (Roxb.) Nees, = *Justicia verticillatus*,
Bremekampia verticillata (Roxb.) Sreem.)

Vernacular name: Jakara, Kateri.

Family : Acanthaceae

Threatened category: Low risk (Gaikwad & Yadav, 2004)

Key characters: Flowers clustered in the midst of axillary cladodes, Corolla-lobes imbricate in bud, Cladodes quadrangular, more than 1 cm long, capsules compressed, glabrous.

Description: Glandular herbs, stout, pubescent, axillary branches reduced to cladodes. Cladodes 4-angled, with 2, short spinous teeth at apex, pubescent. Flowers sessile. Corolla bluish-violet. Stamens 2, included. Capsules slightly compressed, acute, glandular hairy at the apex. Seeds rugose, hygroscopically hairy.

Flowering and fruiting: December- June.

Distribution: India – Endemic.

Localities: Throughout Maharashtra -Ahmednagar, Dhule, Jalgaon, Kolhapur, Nanded, Nasik, Parbhani, Pune, Raigad, Ratnagiri, Satara, Sindhudurg, Yavatmal.

Ecology: Quite common in shady moist places and rock crevices of forests. Altitude ranges between 300-1200m above sea level.

Association: No specific plant association is observed, but grows among grasses and other herbs.



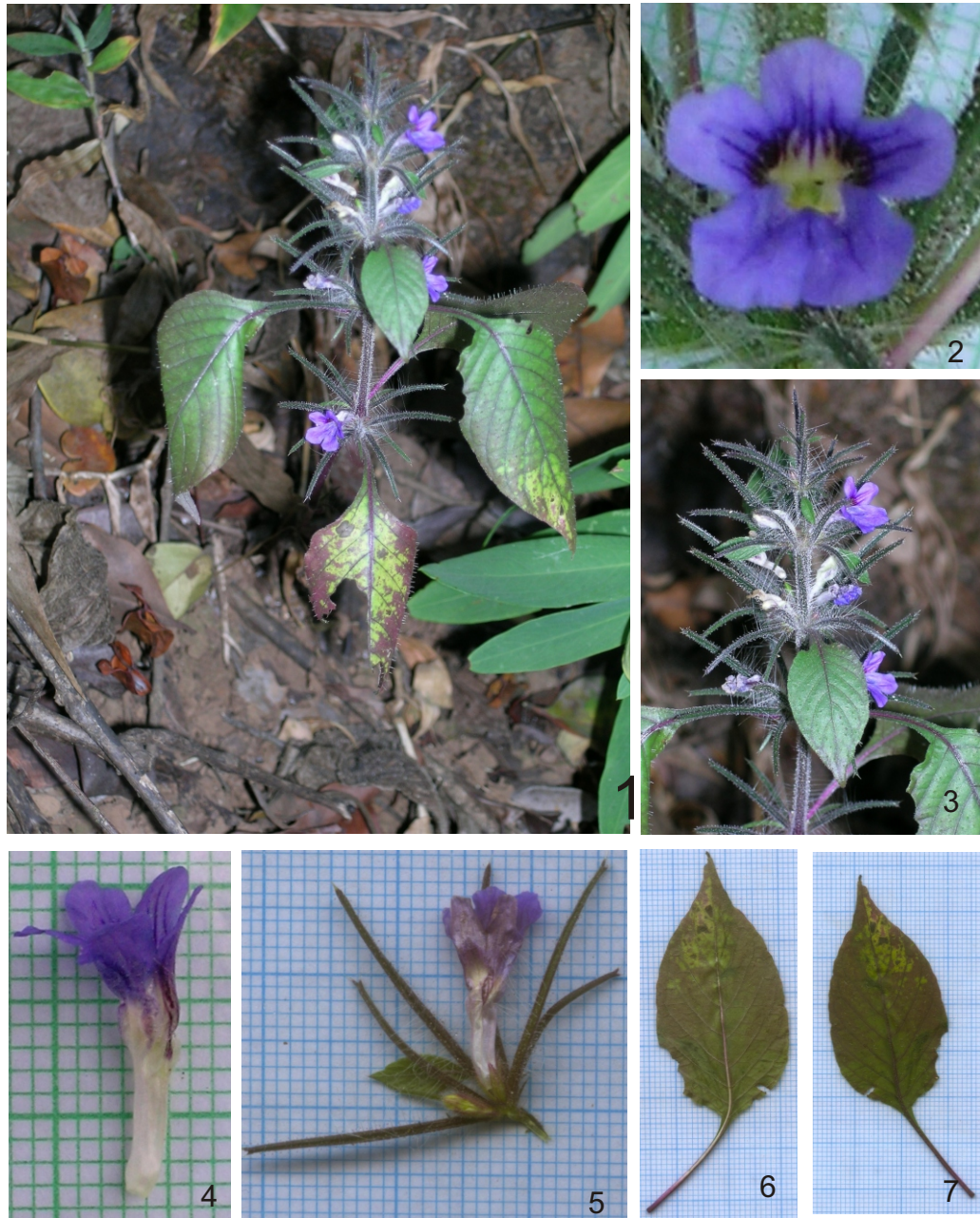
Haritarium

Family Code: 1

Species code: 24 - 1B

Naoroji Godrej Centre for Plant Research

Haplanthodes verticillatus (Roxb.) R. B. Mujumdar



1. Habitat, 2. flower, Habit, 4. Flower 5. Cladodes, 6. Leaves - Dorsal view, 7. Leaf - Ventral view.



Haritarium

Family Code: 1

Species code: 24 - 1C

Naoroji Godrej Centre for Plant Research

Haplanthodes verticillatus (Roxb.) R. B. Mujumdar





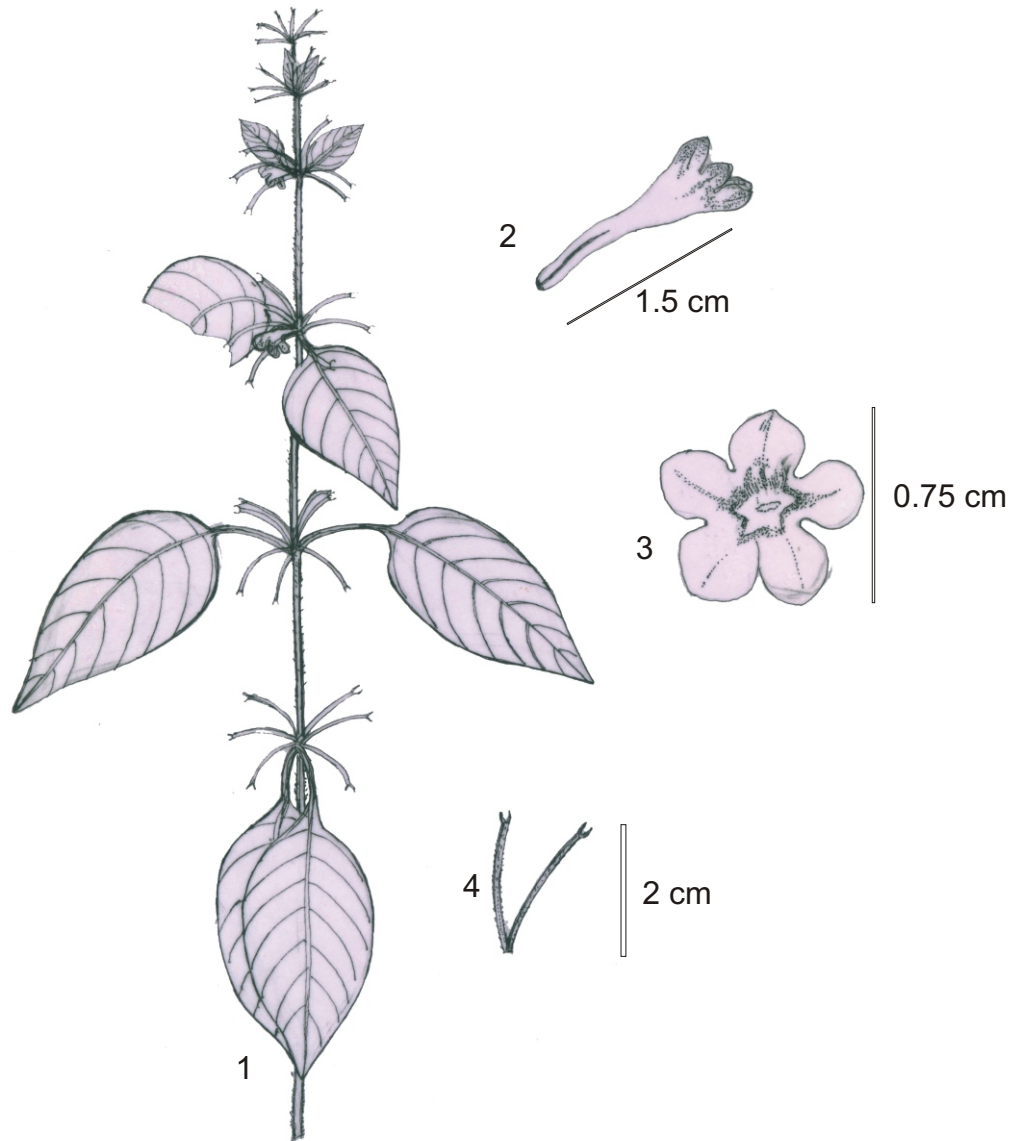
Haritarium

Family Code: 1

Species code: 24 - 1D

Naoroji Godrej Centre for Plant Research

Haplanthodes verticillatus (Roxb.) R. B. Mujumdar



1. Habit, 2. & 3. Flower, 4. Cladodes.



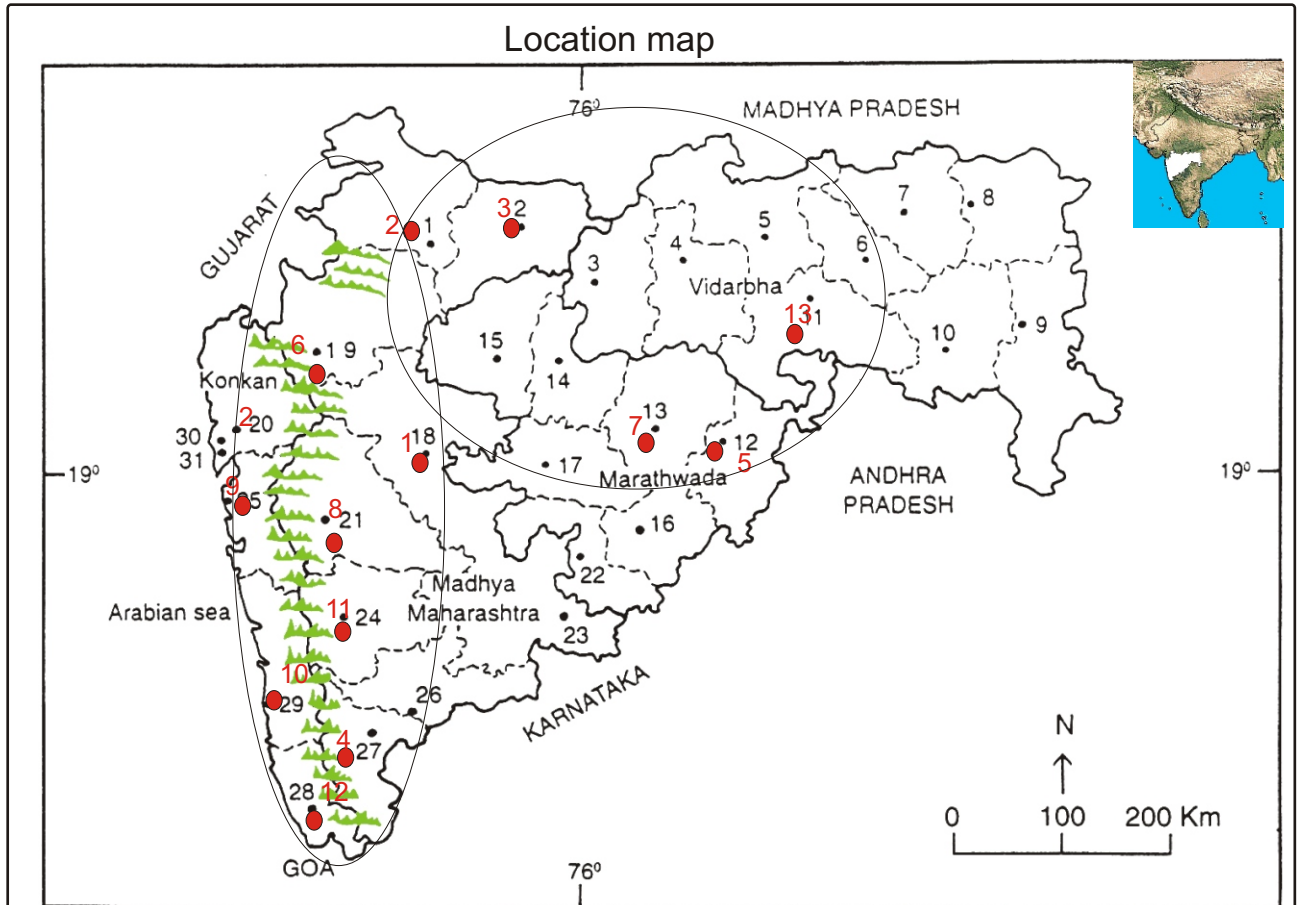
Haritarium

Family Code: 1

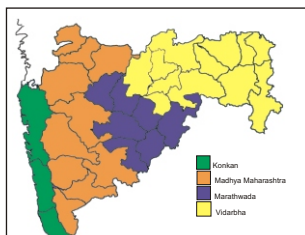
Species code: 24 - 1E

Naoroji Godrej Centre for Plant Research

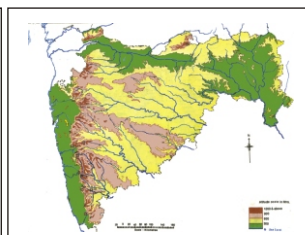
Haplanthodes verticillatus (Roxb.) R. B. Mujumdar



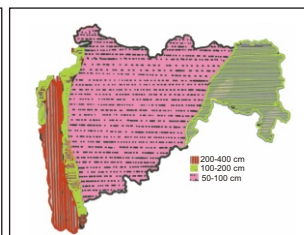
1. Dhule 2. Jalgaon 3. Buldhana 4. Akola 5. Amaravati 6. Wardha 7. Nagpur 8. Bhandara 9. Gadchiroli
 10. Chandrapur 11. Yavatmal 12. Nanded 13. Parbhani 14. Jalna 15. Aurangabad 16. Latur
 17. Beed 18. Ahmadnagar 19. Nashik 20. Thane 21. Pune 22. Osmanabad 23. Solapur 24. Satara
 25. Raigad 26. Sangli 27. Kolhapur 28. Sindhudurg 29. Ratnagiri 30. Mumbai 31. Greater Mumbai.



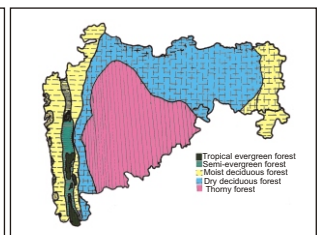
Geographical regions 1



Physical map 2



Rain fall map 3



Forest types 4

Distribution Districts:- ●

1. Ahmednagar, 2. Dhule, 3. Jalgaon, 4. Kolhapur, 5. Nanded, 6. Nasik, 7. Parbhani,
 8. Pune, 9. Raigad, 10. Ratnagiri, 11. Satara, 12. Sindhudurg, 13. Yavatmal.

Geographical distribution in Maharashtra:

Latitude (DMS): Between 20° 53' - 17° 49' N & Longitude (DMS): 72° 52' - 78° 7' E.



Haritarium

Family Code: 1

Species code: 24 - 1F

Naoroji Godrej Centre for Plant Research

Haplanthodes verticillatus (Roxb.) R. B. Mujumdar

References:

Cooke. T (1904): **Flora of Presidency of Bombay**. Vol.2: 452(rep. Ed.1967).

Gaikwad S.P. & S.R. Yadav(2004): in T. Pullaiah (ed.)Endemic flowering plant species of Maharashtra and their possible utilization; **Biodiversity in India**, Regancy publications, New Delhi:46.

Hooker, J.D. *et al.*(1884):**The flora of British India**. London. Vol.4: 506.

Tetali, *et al.* (2000): **Endemic Plants of India (A Status Report of Maharashtra State)**. Naoroji Godrej Centre for Plant Research, Shirwal: Dist. Satara: 39.