



Haritarium

Family Code: 26

Species code: 12 -1A

Naoroji Godrej Centre for Plant Research

Heracleum grande (Dalzell & A.Gibson) P.K.Mukh.

Botanical name: *Heracleum grande* (Dalzell & A.Gibson) P.K.Mukh.
(=*Pastinaca grande* Dalz., = *Peucedanum grande*,
(Dalz.)C.B.Cl., *Heracelum grandis* Almeida.

Vernacular name: Baphali

Family : Apiaceae (Umbelliferae)

Threatened category:

Key characters: Herbs, plants glabrous. Root fusiform. Flowers yellow. Exterior petals of marginal flowers not disproportionately dilated. Ovary pubescent, fruits dorsally compressed, glabrate at length. Lateral ribs of mericarps winged.

Description: Tall perennial herbs, upto 75 cm tall, branches spreading. Leaves mostly radical, 2-pinnate with terminal leaflet; lowest pair ternate, upper simple and terminal leaflets 3-lobed, margins serrate, cauline leaves usually ternate, lobed. Flowers in umbels, more than 10-rayed. Fruits 0.9 –1.2 cm long, obovoid, narrowly winged, dorsal intermediate ridges prominent.

Flowering and fruiting: July – August.

Distribution: India: Endemic to Western Ghats.

Reported Localities: Ahmednagar, Mumbai, Nasik, Pune, Raigad, Satara, Sindhudurg, Thane.

Ecology: Occasionally found in small patches on wet or moist hillsides and shady places in Ghats. Altitude ranges between 600-1200m above sea level.

Association: No specific plant association is observed, except growing among tall grasses.



Haritarium

Family Code: 26

Species code: 12 -1B

Naoroji Godrej Centre for Plant Research

***Heracleum grande* (Dalzell & A.Gibson) P.K.Mukh.**



1.Habitat, 2,4,5. Inflorescence, 3. Single fruit,6. Fruits, 7. Leaf - dorsal view,
8. Leaf - ventral view.



Haritarium

Family Code: 26

Species code: 12 -1C

Naoroji Godrej Centre for Plant Research

***Heracleum grande* (Dalzell & A.Gibson) P.K.Mukh.**





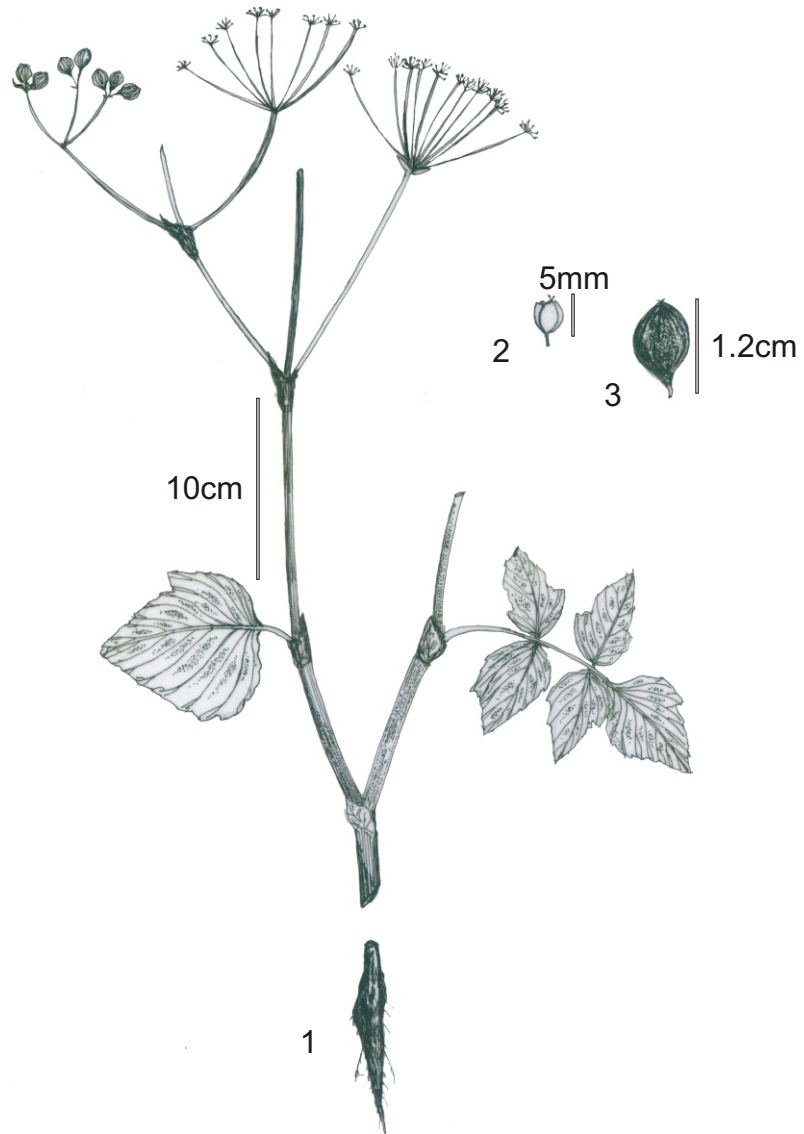
Haritarium

Family Code: 26

Species code: 12 -1D

Naoroji Godrej Centre for Plant Research

***Heracleum grande* (Dalzell & A.Gibson) P.K.Mukh.**



1.Habit, 2.Flower, 3.Capsule.



Haritarium

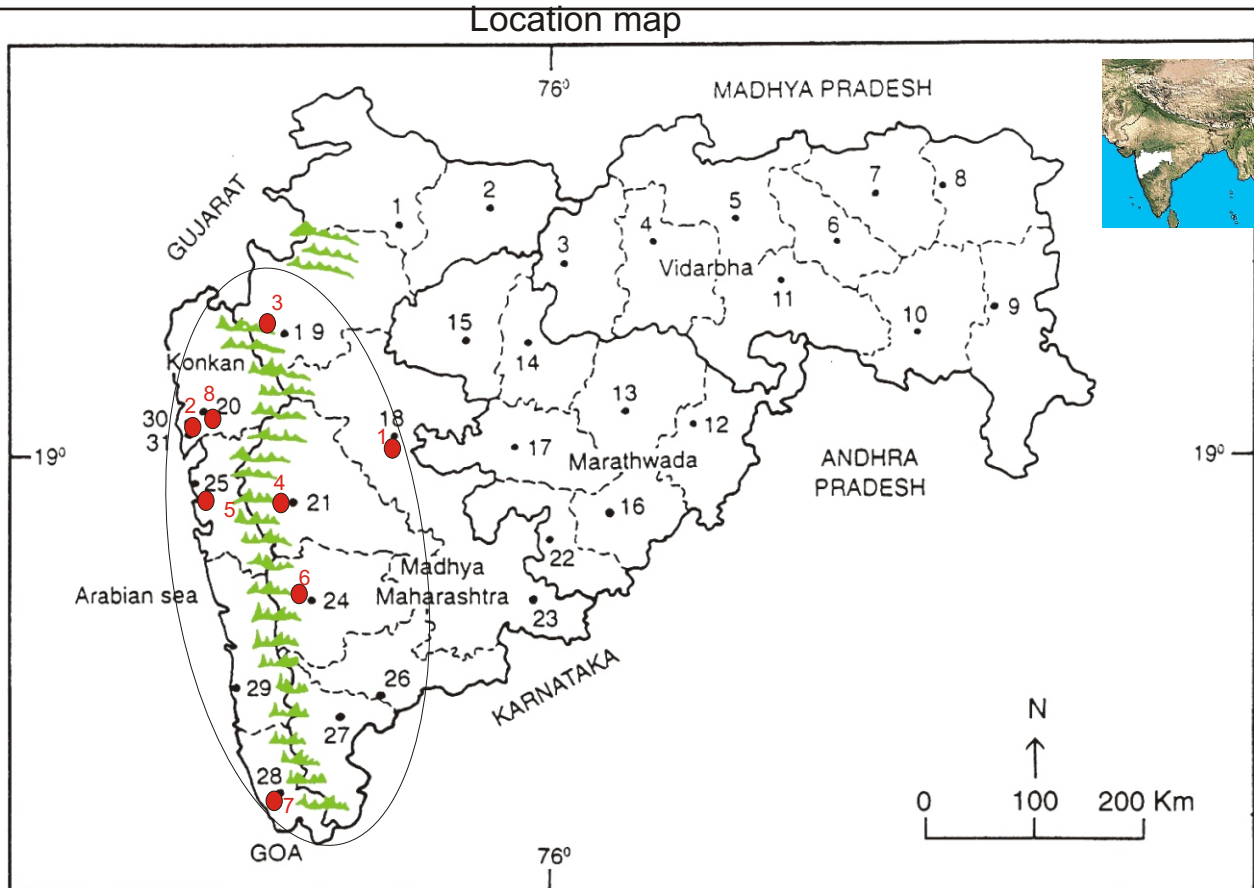
Family Code: 26

Species code: 12 -1E

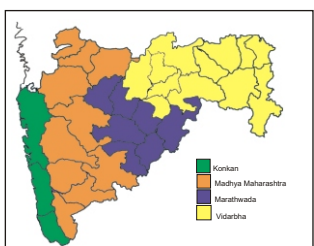
Naoroji Godrej Centre for Plant Research

Heracleum grande (Dalzell & A.Gibson) P.K.Mukh.

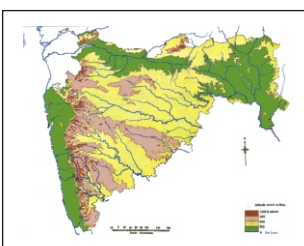
Location map



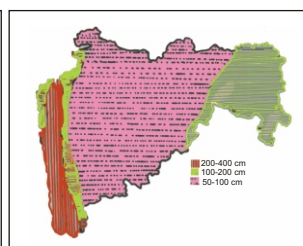
1.Dhule 2.Jalgaon 3. Buldhana 4.Akola 5.Amaravati 6.Wardha 7.Nagpur 8. Bhandara 9. Gadchiroli
 10. Chandrapur 11. Yavatmal 12. Nanded 13. Parbhani 14. Jalna 15. Aurangabad 16.Latur
 17. Beed 18. Ahmadnagar 19 Nashik 20. Thane 21. Pune 22. Osmanabad 23. Solapur 24.Satara
 25. Raigad 26. Sangli 27. Kolhapur 28. Sindhudurg 29. Ratnagiri 30.Mumbai 31.Greater Mumbai.



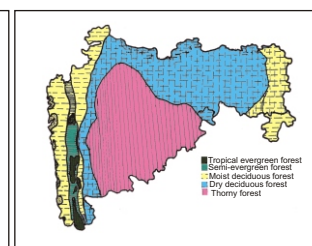
Geographical regions 1



Physical map 2



Rain fall map 3



Forest types 4

Distribution in following districts ●

1. Ahmednagar, 2. Mumbai, 3. Nasik, 4. Pune, 5.Raigad, 6. Satara, 7. Sindhudurg,8. Thane.

Geographical distribution in Maharashtra:

Latitude (DMS): 19° 58' - 16° 49' N & Longitude (DMS): 72 ° 58' -74° 43'E.



Haritarium

Family Code: 26

Species code: 12 -1F

Naoroji Godrej Centre for Plant Research

Heracleum grande (Dalzell & A.Gibson)P.K.Mukh.

References:

Cooke. T (1904): **Flora of Presidency of Bombay**. Vol.1: 605(rep. Ed.1958).

Hooker, J.D. *et al.*(1879):**The flora of British India**. London. Vol.2: 710.

Mukherjee, P.K. & L. Constance. **Umbelliferae (Apiaceae) of India**.(1993)
American Institute of Indian studies and Oxford & IBH Publishing Co. Ltd.
New Delhi.279 pp.

Singh N.P. & S. Karthikeyan (2000):(eds), **Flora of Maharashtra state, Dicotyledones**.Vol. 2: . B.S.I., Calcutta:98.