



**Haritarium**

Family Code: 1

Species code: 30- 8A

**Naoroji Godrej Centre for Plant Research**

**Lepidagathis lutea Dalz.**

**Botanical name:** *Lepidagathis lutea* Dalzell

**Vernacular name:** -

**Family :** Acanthaceae

**Threatened category:** Endemic.

**Key characters:** Leaves not spinous tipped, Calyx 5 partite Braceoles uniform, Bracts softly hairy with straight apical spines, seeds two.

**Description:** Herbs; root-stocks with woody; stems numerous, suberect, quadrangular, filiform, pubescent or nearly glabrous. Leaves 2.5-5X0.25-0.4 cm, linear, apex acute or subobtuse, base straightly tapering. Flowers yellow in velvety pubescent spikes. Capsules about 0.6 cm long, ovoid-lanceolate, seeds 2 with long, hygroscopic, mucilaginous hairs longer than nucleus.

**Flowering and fruiting:** November -March.

**Distribution:** India

**Localities:** Aurangabad, Kolhapur, Ratnagiri, Sindhudurg.

**Ecology:** It occurs frequently on exposed rocks and gravelly soils.

**Association:** No specific association was observed.



**Haritarium**

Family Code: 1

Species code: 30- 8B

**Naoroji Godrej Centre for Plant Research**

***Lepidagathis lutea* Dalz.**



1.& 2.Habit, 3. Flower, 4. & 5.Bracts,6. Flower bud, 7. Capsule, 8. Seed





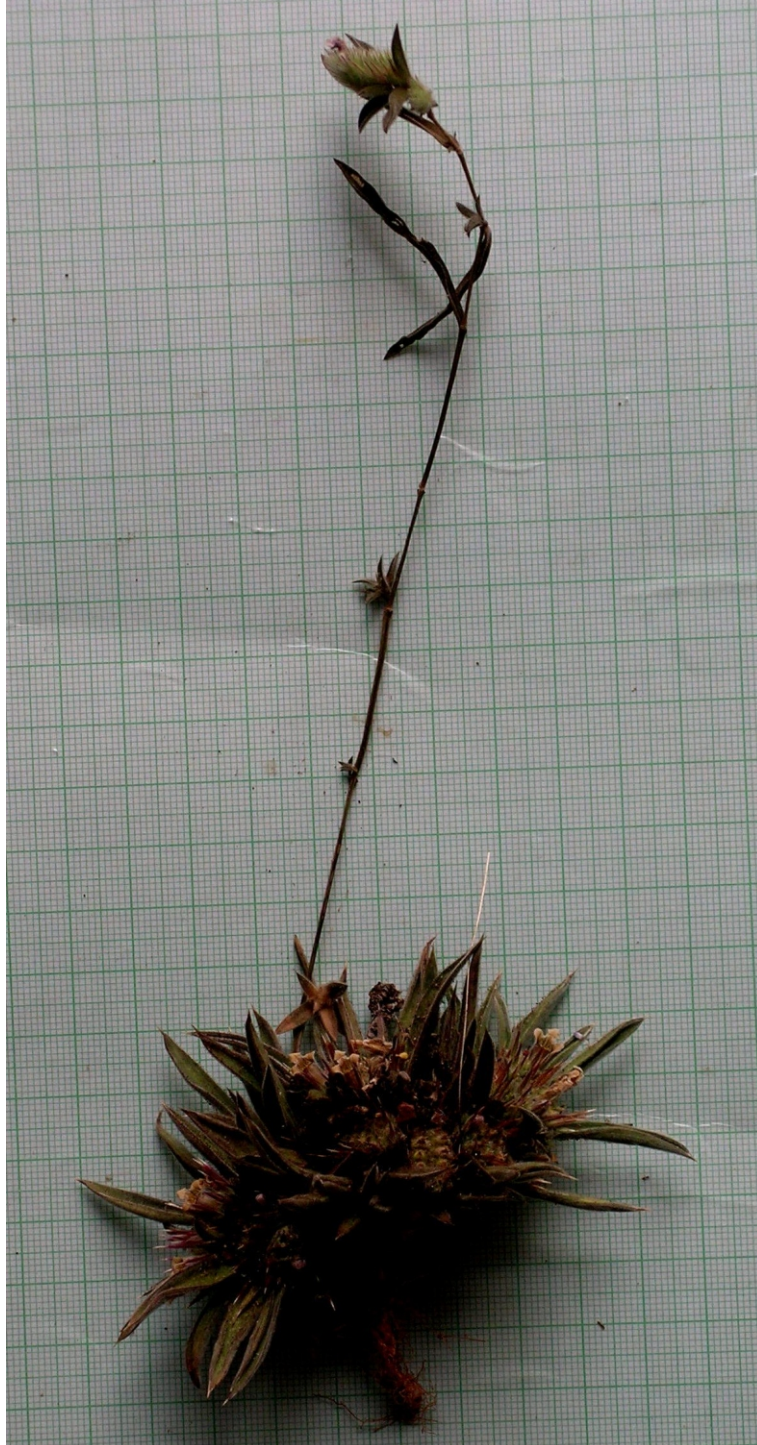
**Haritarium**

Family Code: 1

Species code: 30- 8C

**Naoroji Godrej Centre for Plant Research**

***Lepidagathis lutea* Dalz.**





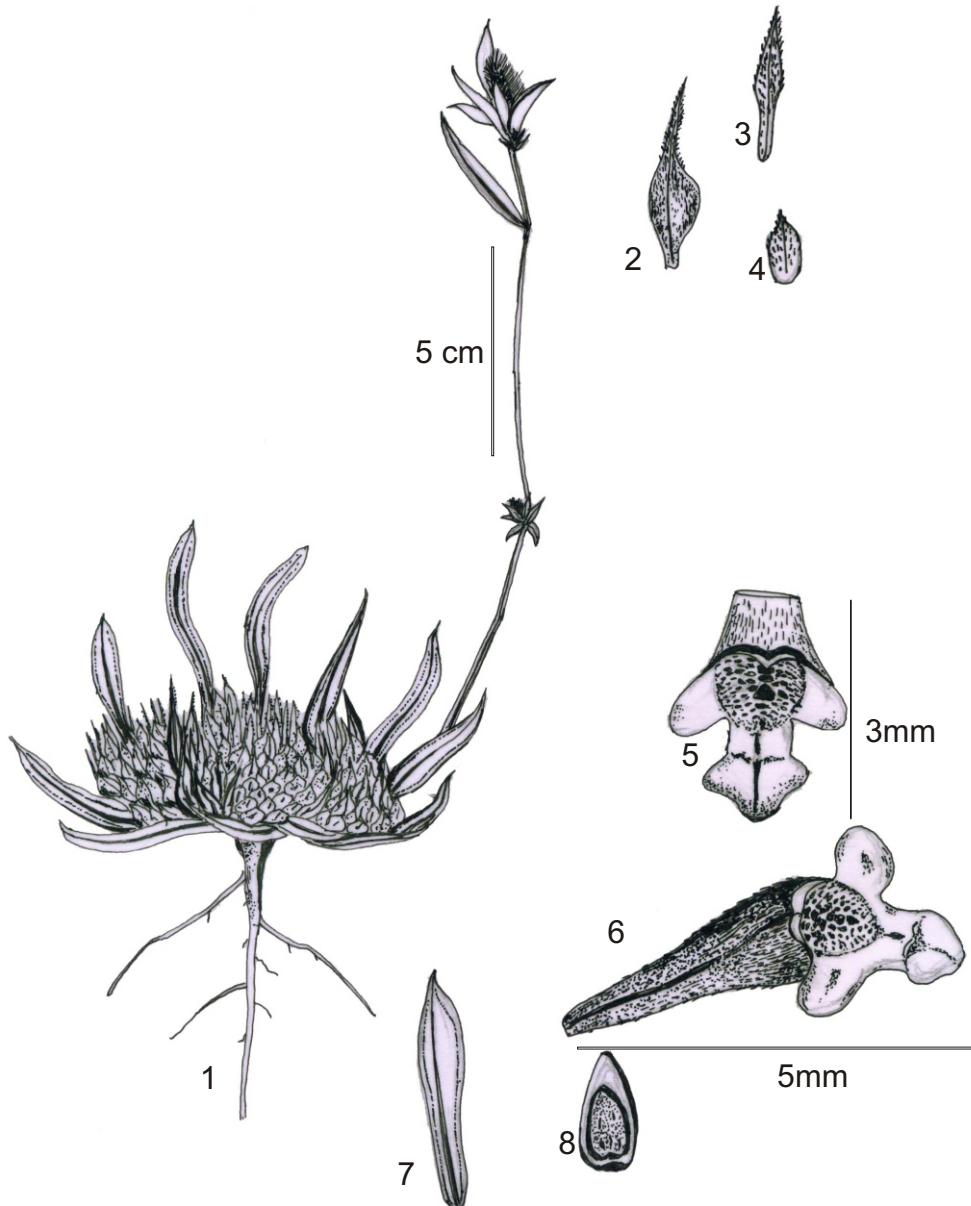
**Haritarium**

Family Code: 1

Species code: 30- 8D

**Naoroji Godrej Centre for Plant Research**

**Lepidagathis lutea Dalz.**



1.Habit, 2,-4&7. Bracts, 5&6.Flower, 8.Seed



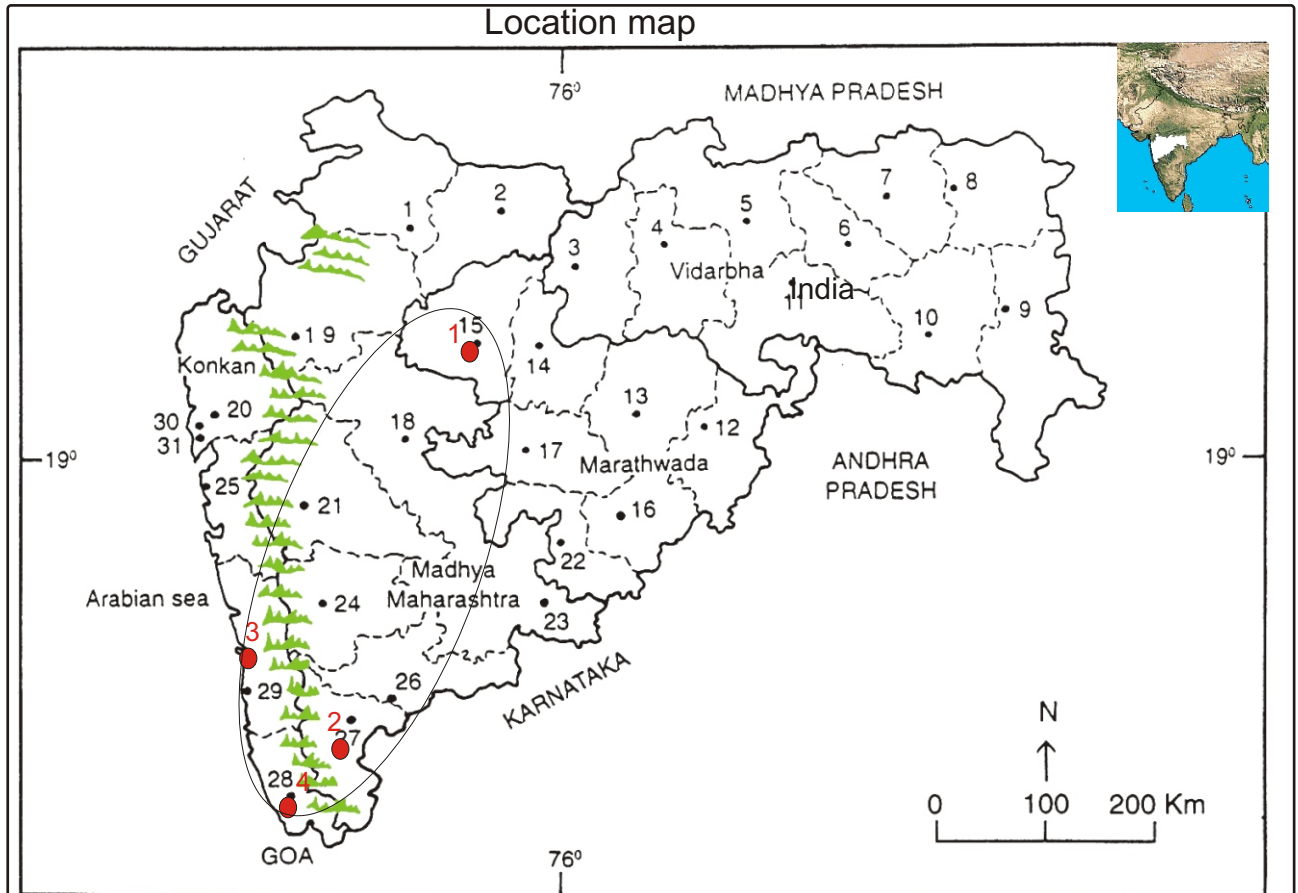
**Haritarium**

Family Code: 1

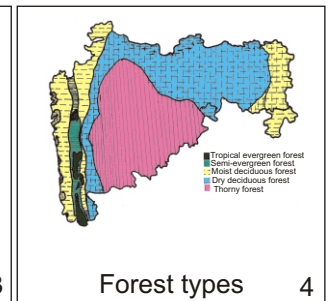
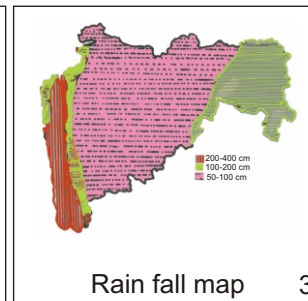
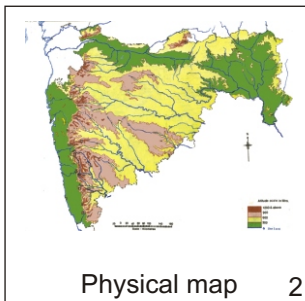
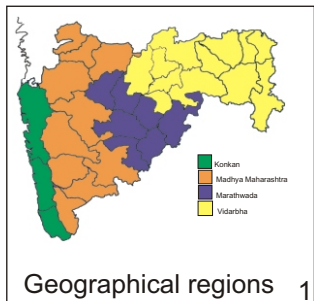
Species code: 30- 8E

**Naoroji Godrej Centre for Plant Research**

**Lepidagathis lutea Dalz.**



1.Dhule 2.Jalgaon 3. Buldhana 4.Akola 5.Amaravati 6.Wardha 7.Nagpur 8. Bhandara 9. Gadchiroli  
10. Chandrapur 11. Yavatmal 12. Nanded 13. Parbhani 14. Jalna 15. Aurangabad 16.Latur  
17. Beed 18. Ahmadnagar 19 Nashik 20. Thane 21. Pune 22. Osmanabad 23. Solapur 24.Satara  
25. Raigad, 26. Sangli 27. Kolhapur 28. Sindhudurg 29. Ratnagiri 30.Mumbai 31.Greater Mumbai.



Localities- ●

1.Aurangabad, 2.Kolhapur, 3. Ratnagiri, 4.Sindhudurg.

Geographical distribution:

Latitude (DMS): Between 19<sup>o</sup> 52'- 16<sup>o</sup> 06 N & Longitude (DMS): 72<sup>o</sup> 58'-75<sup>o</sup> 19' E;



**Haritarium**

Family Code: 1

Species code: 30- 8F

**Naoroji Godrej Centre for Plant Research**

**Lepidagathis lutea Dalz.**

**References:**

Cooke. T (1958): **Flora of Presidency of Bombay**. Vol.2:471.

Hooker, J.D. *et al.*(1885):**The flora of British India**. London. Vol. 4: 517.

Santapau, H.(1952): The Acanthaceae of Bombay. Univ. Bombay Bot. Mem. 2:73.

Singh N.P. & S. Karthikeyan (2000):(eds), **Flora of Maharashtra state, Dicotyledones**.Vol. 2: B.S.I., Calcutta: 646.

Tetali, *et al.* (2000): **Endemic Plants of India ( A Status Report of Maharashtra State)**. Naoroji Godrej Centre for Plant Research, Shirwal:42.