



Haritarium

Family Code: 537

Species code: 3 - 12A

Naoroji Godrej Centre for Plant Research

Murdannia versicolor (Dalz.) Brueck.

Botanical name: *Murdannia versicolor* (Dalz.) Brueck.

Family: Commelinaceae

Vernacular name: -

Threatened category:

Key characters: Stems leafy, reaching 25 cm, Flowers axillary, ochre-yellow, solitary, filaments bearded.

Description: Annual herbs, stems 5-25 cm high, rooting at lower nodes. Leaves 1.5-4.5 X 0.8-1.5 cm, ovate-lanceolate or oblong, apex acuminate, base semi-amplexicaul. Flowers 0.5-0.8 cm across. Capsules about 0.5 X 0.2 cm, linear, subtrigonous, pointed, erect. Seeds cubical, small, yellowish grey.

Flowering and fruiting: August -November.

Distribution: India

Localities: Kolhapur, Ratnagiri, Satara, Sindhudurg.

Ecology: In open situations, grass lands,

Association: Grasses.



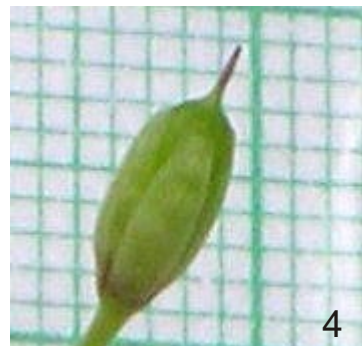
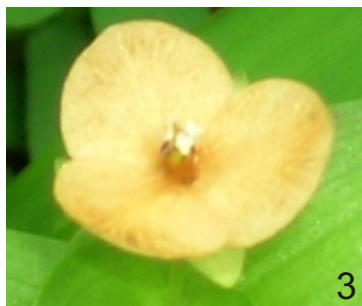
Haritarium

Family Code: 537

Species code: 3 - 12B

Naoroji Godrej Centre for Plant Research

***Murdannia versicolor* (Dalz.) Brueck.**



1.Habit, 2. & 3.Flower, 4.Capsule,5. Inflorescence, 6. Leaf- Dorsal side, 7. Leaf- Ventral side.



Haritarium

Family Code: 537

Species code: 3 - 12C

Naoroji Godrej Centre for Plant Research

Murdannia versicolor (Dalz.) Brueck.





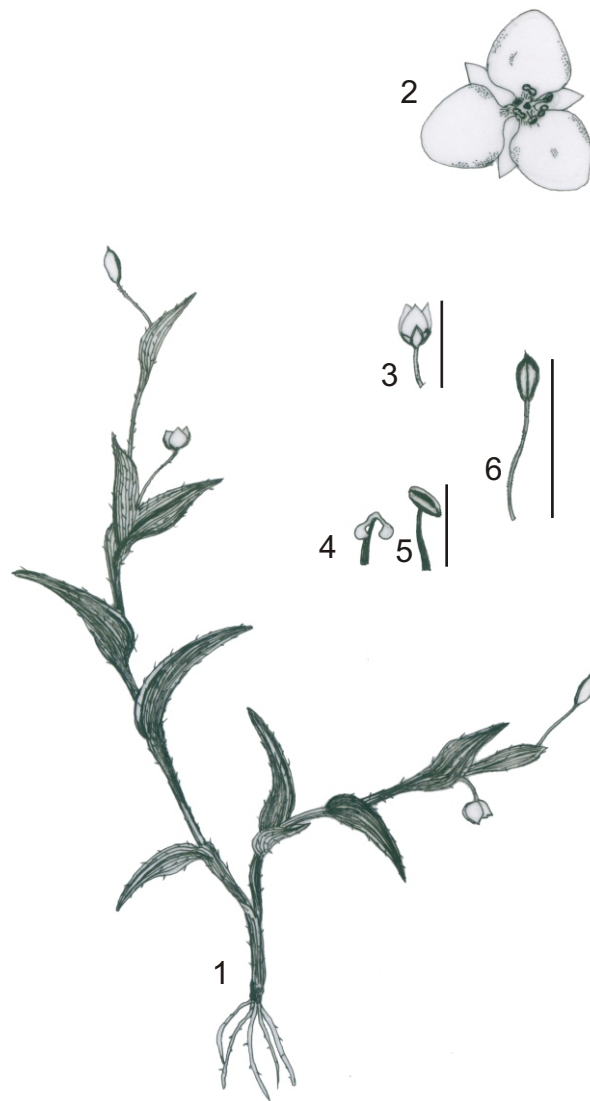
Haritarium

Family Code: 537

Species code: 3 -12D

Naoroji Godrej Centre for Plant Research

Murdannia versicolor (Dalz.) Brueck.



1.Habit, 2 Flower, 3. Bud, 4. Capsule, 4&5. Stamen.



Haritarium

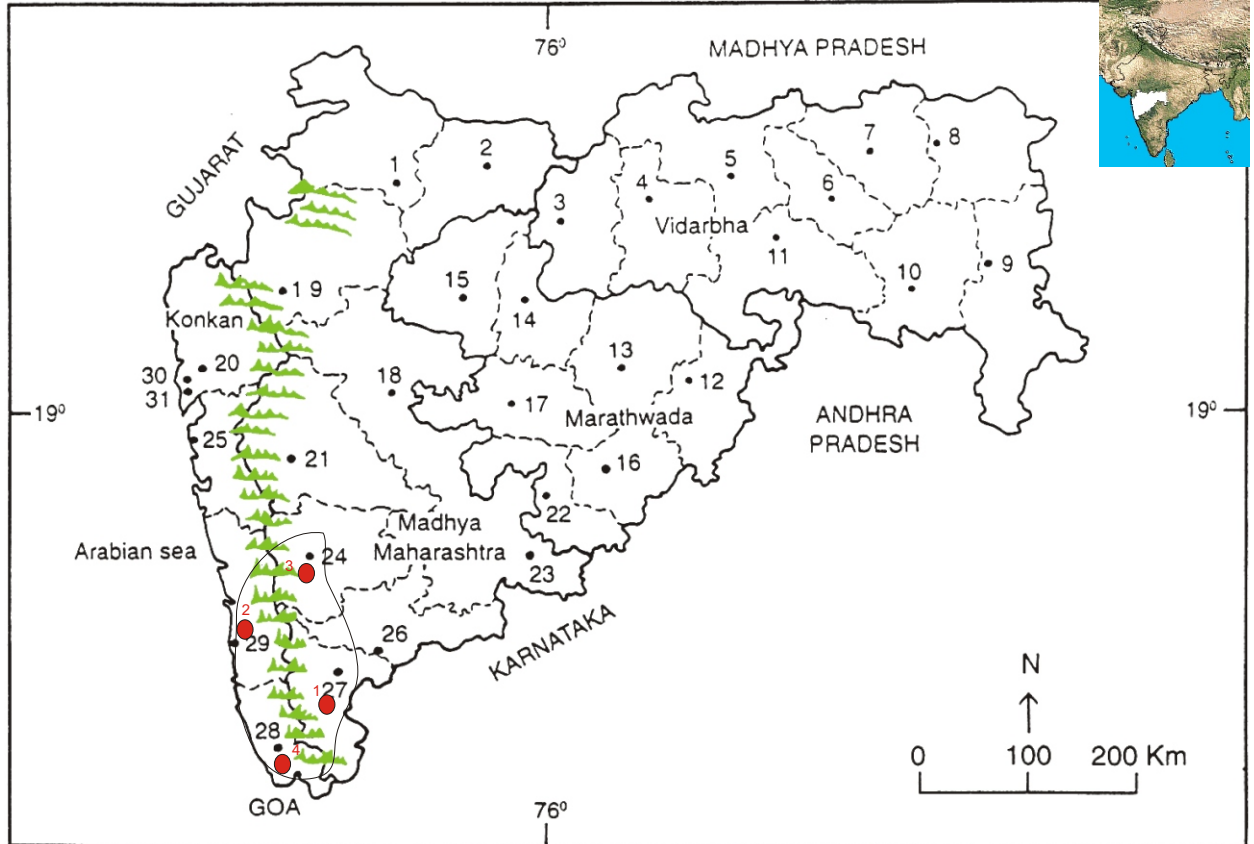
Family Code: 537

Species code: 3 - 12E

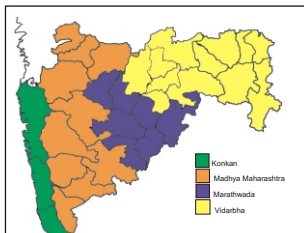
Naoroji Godrej Centre for Plant Research

Murdannia versicolor (Dalz.) Brueck.

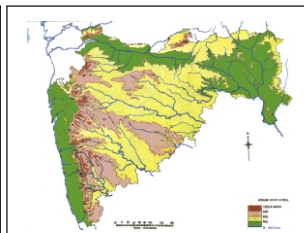
Location map



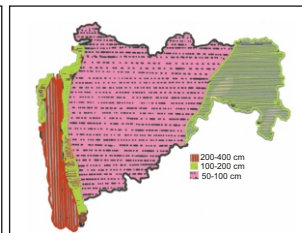
1. Dhule 2. Jalgaon 3. Buldhana 4. Akola 5. Amaravati 6. Wardha 7. Nagpur 8. Bhandara 9. Gadchiroli
 10. Chandrapur 11. Yavatmal 12. Nanded 13. Parbhani 14. Jalna 15. Aurangabad 16. Latur
 17. Beed 18. Ahmadnagar 19. Nashik 20. Thane 21. Pune 22. Osmanabad 23. Solapur 24. Satara
 25. Raigad 26. Sangli 27. Kolhapur 28. Sindhudurg 29. Ratnagiri 30. Mumbai 31. Greater Mumbai.



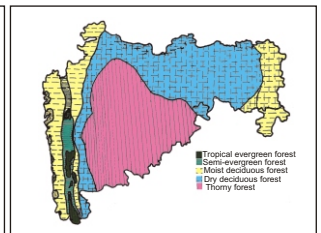
Geographical regions 1



Physical map 2



Rain fall map 3



Forest types 4

Localities- ●

1. Ahmednagar, 2. Dhule, 3. Kolhapur, 4. Nasik, 5. Pune, 6. Raigad, 7. Ratnagiri, 8. Satara, 9. Sindhudurg.

Geographical distribution in Maharashtra:

Latitude (DMS): Between 20° 53' - 17° 49' N & Longitude (DMS): 72° 58' - 74° 43' E.



Haritarium

Family Code: 537

Species code: 3 -12F

Naoroji Godrej Centre for Plant Research

Murdannia versicolor (Dalz.) Brueck.

References:

Cooke. T (1904): **Flora of Presidency of Bombay**. Vol.2: 285 (rep. Ed.1967)

Gaikwad S.P. & S.R. Yadav(2004): in T. Pullaiah (ed.)Endemic flowering plant species of Maharashtra and their possible utilization; **Biodiversity in India**, Regancy publications, New Delhi:44.

Hooker, J.D. *et al.*(1890):**The flora of British India**. London. Vol.4: 160.

Santapau, H. (1955): Rec. Bot. Surv. India 16(1):167(3rd rev.ed.).

Tetali, *et al.* (2000): **Endemic Plants of India (A Status Report of Maharashtra State)**. Naoroji Godrej Centre for Plant Research, Shirwal: 32.