



Haritarium

Family Code: 1

Species code: 16 - 1A

Naoroji Godrej Centre for Plant Research

***Strobilanthes integrifolia* (Dalzell) Kuntz.**

Botanical name: *Strobilanthes integrifolia* (Dalzell) Kuntz.

(= *Endopogon integrifolius* Dalz. = *Leptacanthus alatus* Wight; = *Strobilanthes perfoliatus* T. And.)

Vernacular name: Waiti

Family : Acanthaceae

Threatened category: Low risk (Gaikwad & Yadav, 2004).

Key characters: Petioles winged, the wings auricled at base, spikes viscous-hairy, Corolla tube narrow below and infundibuliform upwards; Stamens 4, Pollen grains ellipsoid with wavy bands, capsule 2-seeded, strong smelling.

Description: 1-1.5 m tall shrubs, nearly glabrous except the inflorescence; stems terete. Leaves 10-20 X 3.0-6.5 cm, elliptic-lanceolate, apex much-acuminate, sparingly toothed or entire, base tapering, decurrent into petiole forming a wing along to its insertion, forming auriculate. Flowers blue in axillary and terminal, simple or compound, strong smelling, 5-13 cm long spikes. Rhachis tetragonal, viscous-hairy; peduncles usually short; Calyx 0.9-1.0 cm long, divided nearly to the base; segments linear, subacute one longer than the other 4, Corolla blue, blabrous outside, hairy inside, 2.8 - 3 cm long, tubular-infundibuliform; narrow portion of the tube shorter than the ventricose lobes long equal rounded, stamens 4 included; filaments of the longer stamens bearded with long hairs almost to the apex, Capsules 1 X 0.5 cm, obovoid, compressed, mucronate. Seeds 2, 0.4 cm long, ovoid, shaggy, areoles small.

Flowering and fruiting: December –May.

Distribution: Endemic to W. Peninsular India.

Reported Localities: Kolhapur, Raigad, Ratnagiri, Sindhudurg, Pune, Thane.

Ecology: Occasionally occurs on open hill slopes of evergreen forests preferably along the stream banks.

Association: Grass spp., *Carissa congesta*.



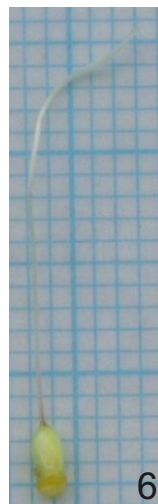
Haritarium

Family Code: 1

Species code: 16 - 1B

Naoroji Godrej Centre for Plant Research

***Strobilanthes integrifolia* (Dalzell) Kuntz.**



1. Habit, 2. Flower, 3. Inflorescence, 4. Dissected flower, 5. Anther lobes, 6. Gynoecium, 7. Leaf - dorsal view, 8. Leaf - ventral view.



Haritarium

Family Code: 1

Species code: 16 - 1C

Naoroji Godrej Centre for Plant Research

***Strobilanthes integrifolia* (Dalzell) Kuntz.**





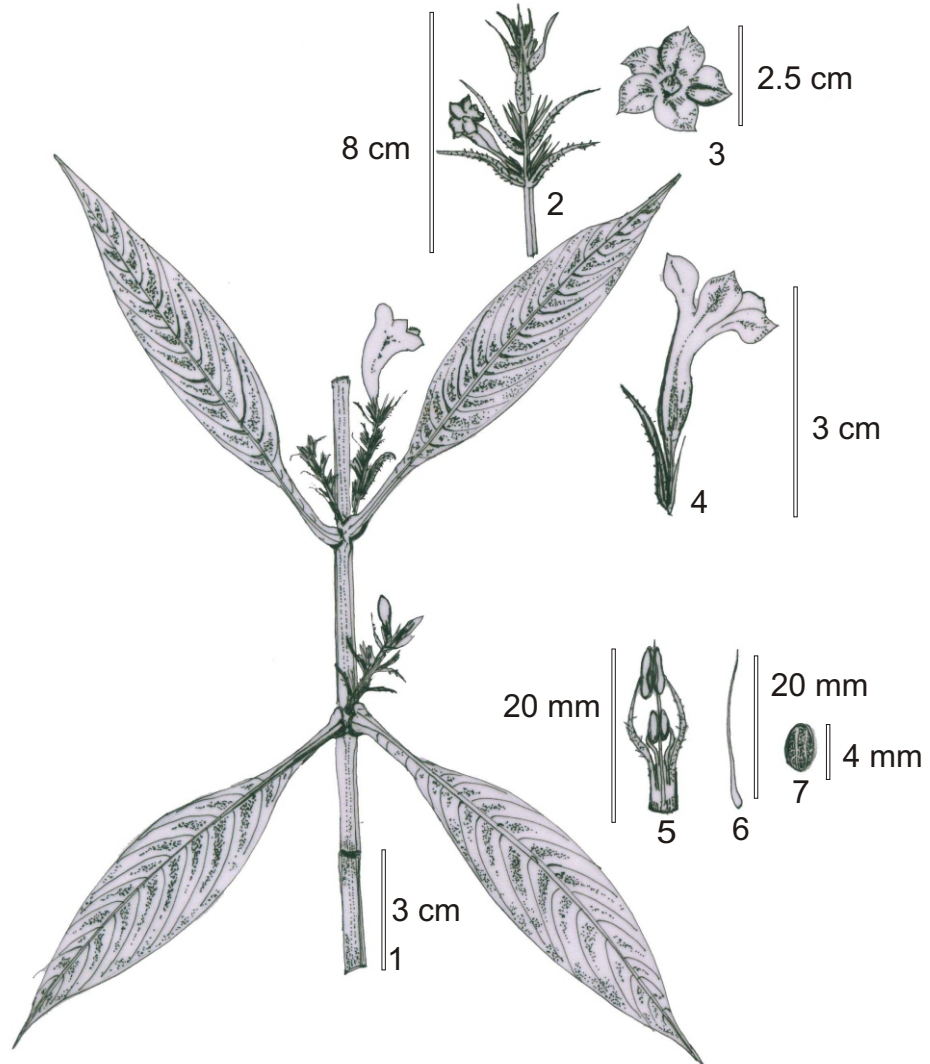
Haritarium

Family Code: 1

Species code: 16 - 1D

Naoroji Godrej Centre for Plant Research

***Strobilanthes integrifolia* (Dalzell) Kuntz.**



1. Habit, 2. Inflorescence, 3. Flower-Top view, 4. Flower- Side view, 5. Anther, 6. Gynoecium, 7. Seed.



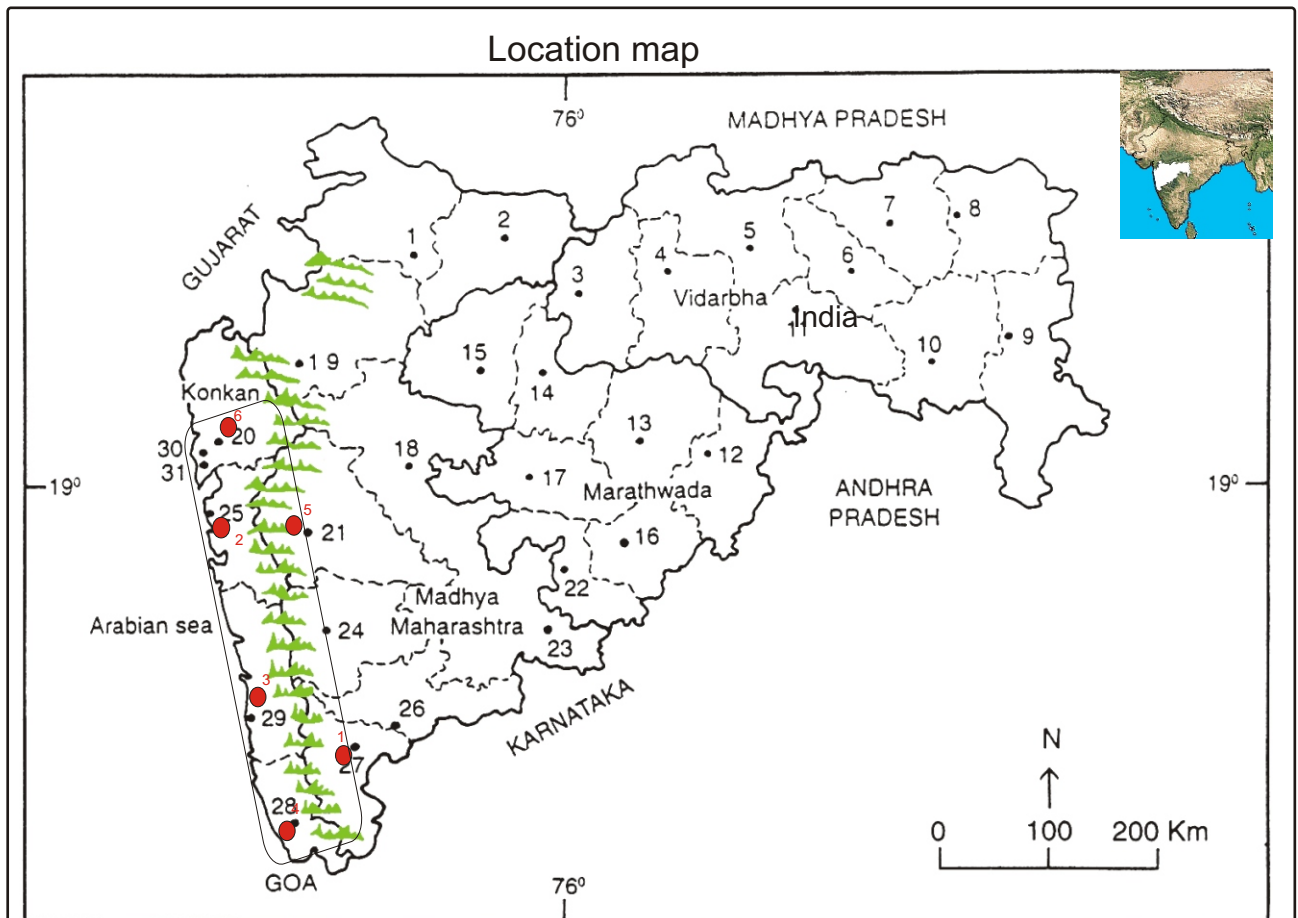
Haritarium

Family Code: 1

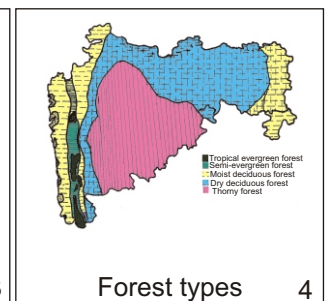
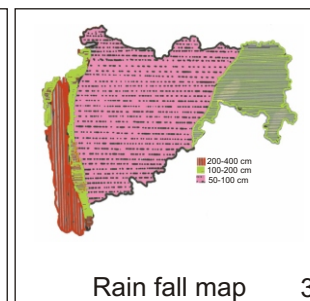
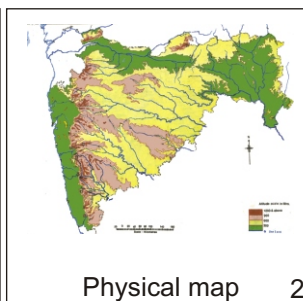
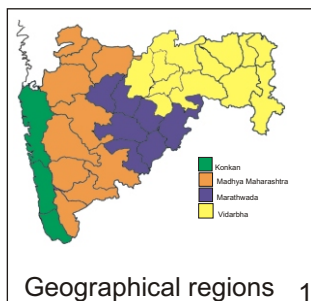
Species code: 16 - 1E

Naoroji Godrej Centre for Plant Research

***Strobilanthes integrifolia* (Dalzell) Kuntz.**



1.Dhule 2.Jalgaon 3. Buldhana 4.Akola 5.Amaravati 6.Wardha 7.Nagpur 8. Bhandara 9. Gadchiroli
10. Chandrapur 11. Yavatmal 12. Nanded 13. Parbhani 14. Jalna 15. Aurangabad 16.Latur
17. Beed 18. Ahmadnagar 19 Nashik 20. Thane 21. Pune 22. Osmanabad 23. Solapur 24.Satara
25. Raigad 26.Sangli 27. Kolhapur 28. Sindhudurg 29. Ratnagiri 30.Mumbai 31.Greater Mumbai.



Localities- ●

1.Kolhapur, 2.Raigad, 3.Ratnagiri, 4.Sindhudurg, 5.Pune, 6.Thane.

Geographical distribution in Maharashtra:

Latitude (DMS): Between 15^o 87' -19^o 63' N & Longitude (DMS): 72^o 50'-73^o.5' E.



Haritarium

Family Code: 1

Species code: 16 - 1F

Naoroji Godrej Centre for Plant Research

***Strobilanthes integrifolia* (Dalzell) Kuntz.**

References:

Cooke. T. (1904): **The Flora of Presidency of Bombay**. Vol.2: 448. (rep. Ed.1958)

Gaikwad S.P. & S.R. Yadav(2004): in T. Pullaiah (ed.)Endemic flowering plant species of Maharashtra and their possible utilization; **Biodiversity in India**, Regancy publications, New Delhi:50.

Hooker, J.D. *et al.*(1884):**The flora of British India**. London. Vol.4: 458.

Santapau H. (1952): The Acanthaceae of Bombay. Univ. Bombay Bot Mem. 2: 43.

Singh N.P. & S. Karthikeyan (2000):(eds), **Flora of Maharashtra state, Dicotyledones**.Vol. 2: . B.S.I., Calcutta:77.

Tetali,P.*et al.* (2000): Endemic Plants of India (A Status Report of Maharashtra State). Naoroji Godrej Centre for Plant Research, Shirwal: 42.