



NAVARA



Tough, agile and stylish, the Nissan NAVARA is the latest in a long line of Nissan pickups - we produced our first in 1935. Along the way Nissan pioneered the KingKab in 1977, the innovative Utili-track tie down system in 2005, and now a leader in the use of a coil-spring rear suspension on a 1-ton pickup. With **14 MILLION NISSAN PICKUP OWNERS** blazing trails in **180 COUNTRIES** around the world, our proud legacy of reliability and innovation continues today. As long as there's adventure on the horizon, Nissan will take the lead.



MORE THAN  
**80**  
YEARS  
OF TOUGH



# INTRODUCING THE ALL-NEW NISSAN NAVARA. RUGGED REDEFINED



## INTERNATIONAL PICK-UP AWARD 2016

The award was established in 2009 to acknowledge the Pick-up manufacturers that are recognised as making a major contribution to raising the standards of efficiency and the sustainability of transport with respect to the environment and safety of people. Nissan NAVARA received this Global accolade in 2016.





## DEVOURS ROADS, SIPS FUEL.

The Nissan NAVARA shows how power, acceleration and fuel efficiency can not only coexist, but thrive, with its next generation 2.5 litre diesel engine. Greater fuel efficiency is further achieved by using low friction components, reduced mass, wide range gear transmissions and enhanced aerodynamics.

## EXCEPTIONAL FUEL EFFICIENCY

POWER	120kw (SE) 140kw (LE)
TORQUE	403Nm @ 2000rpm (SE) 450Nm @ 2000rpm (LE)
ENGINE DISPLACEMENT	2 488 CC
FUEL TYPE	DIESEL

# TAKE YOUR OWN PATH.

Whether it's the depths of the bush or the concrete jungle, the Nissan NAVARA is always in its element.



## Shift-on-the-fly 4-Wheel Drive

The Nissan NAVARA's 4WD system is electronically controlled via a rotary switch on the dash. The system switches between 2WD and high range 4WD (4H) with the twist of a dial up to speeds of 100km/hr. Select low range 4WD (4LO) for mud, sandy or difficult terrain.

APPROACH  
ANGLE  
**33°**



## 4-Wheel Active Brake Limited Slip (ABLS)

ABLS individually controls each of the four wheels to optimise traction in challenging conditions, similar to the benefits that a limited slip differential provides. The biggest advantage of ABLS is that it works on all four wheels, not just the two primary driven wheels.

DEPARTURE  
ANGLE  
**27.9°**

MIN GROUND  
CLEARANCE  
**226 mm**

## Hill Start Assist (HSA) and Hill Descent Control (HDC)

Facing steep terrain? Now you can do it with more confidence and control. On an incline, Hill Start Assist keeps you from rolling backwards when you're accelerating from a stop. And Hill Descent Control helps you maintain a steady speed, so you get back down a steep incline more safely.



## ROCK SOLID FROM THE GROUND UP.

As tough as they come, the Nissan NAVARA's fully boxed ladder frame is made with rugged high-tensile strength steel for improved structural rigidity and more torsional stiffness giving better handling and ride comfort without compromising load carrying ability.



**FULLY  
BOXED.  
FULLY  
CAPABLE.**

## EXCEPTIONAL COMFORT, SUPERIOR HANDLING.

The Nissan NAVARA is the first mainstream pickup with a rear coil suspension like large SUVs. The heavy duty 5-link coil suspension versus the traditional rear leaf suspension offers exceptional ride comfort, absorbing the bumps in the road. In addition, the high lateral rigidity with springs, stabiliser and dampers tuned for optimum performance improves steering properties for superior handling and cornering ability on gravel and tar.



5  
-LINK  
COIL  
REAR  
SUSPENSION



## LOAD UP WITH VERSATILITY.

With over 1-ton loading capacity, the Nissan NAVARA is engineered to handle tough jobs and heavy payloads for work or play. A lighter tailgate makes loading and unloading simple.

## PLENTY OF PULLING POWER.

You're ready to pull some serious weight - the Nissan NAVARA has a full-length, fully boxed ladder frame, heavy duty components, including braking, transmission and cooling systems. Add to that plenty of power and low-end torque.

**1T**  
PAYLOAD  
CAPACITY

**3.5T**  
BRAKED  
TOWING  
CAPACITY





## **RIDE FIRST CLASS EVERY DAY.**

In the Nissan NAVARA, you'll find unexpected comfort and space. Astronaut-inspired zero gravity seats create neutral posture and improved blood flow to help make those long rides a lot more comfortable. Plus Climate Control means you and your passengers can each keep things as cool or warm as you like. The circular side vents pinpoint exactly where you want the air to go - which helps out everyone on board, including rear passengers who have their own vents and driver controlled access to a rear power sliding window at the back. The LE grade comes with leather seats with 8-way power control and seat heat function.

# NISSAN SAFETY SHIELD SURROUND YOURSELF WITH CONFIDENCE.

**PROTECT, RESPOND, MONITOR. Wouldn't it be smart if you had the confidence you need for every part of your drive?** The Nissan Safety Shield is a comprehensive approach to safety that guides the engineering and development of every vehicle we make. The features described here are just some of many on your Nissan NAVARA, helping to protect you and yours by focusing on three key areas: keeping an eye on your vehicle's systems and the surroundings, assisting in handling unexpected situations, and helping to keep you safe in the unfortunate event of an accident.

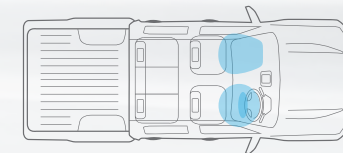
**Traction Control System (TCS).** TCS helps you keep a better grip on the road. It senses when a drive wheel starts to slip and reduces engine power or applies brake pressure to help restore traction.

**Zone Body Concept.** Nissan's Zone Body Concept helps absorb the impact and protect the passenger compartment during a collision. It features a high-intensity cabin structure with crossmembers and reinforcements, front and rear crumple zones, and an energy-absorbing steering column.

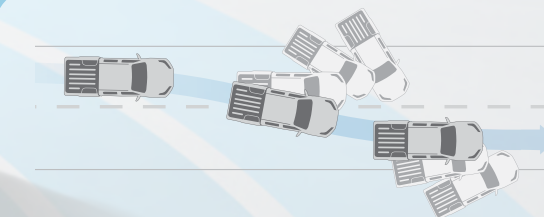
**Electronic Limited Slip Differential (eLSD).** In low-traction conditions (mud, dirt, bumps, slopes, etc.) the vehicle senses if one wheel is slipping and automatically slows that wheel using the brakes to regain traction and keep you moving. Works on all 4 wheels.



In the commitment to "Real World Safety", Nissan pursues innovation as part of its Safety Shield concept. Based on the idea that cars should help protect people, advanced, proactive safety technologies help driver and passengers to avoid danger and injury in a wide range of circumstances.



**Airbags.** Driver and passenger airbags in the front.



**Vehicle Dynamic Control (VDC).** VDC monitors your steering, braking and the vehicle's stability and, if needed, will reduce engine output and apply brake pressure to specific wheels in order to keep you on your intended path.

**Anti-lock Braking System (ABS).** ABS prevents the wheels from locking under hard braking, allowing you to stop quicker and at the same time steer around obstacles.

**Electronic Brakeforce Distribution (EBD).** EBD automatically sends extra force to the rear brakes when it detects there's additional weight in the back.

# STAY IN SHAPE WITH NISSAN APPROVED ACCESSORIES.



## BONNET GUARD

Our bonnet guard is exclusively styled in UV stabilised acrylic to protect valuable paint and bodywork from stone chips.

Available In Matt Black



## HEADLAMP SURROUNDS

Our headlamp trim surrounds are custom made to add a rugged and muscular character to your Nissan NAVARA. Easy to install without any drilling.

Available In Matt Black



## NUDGE BAR

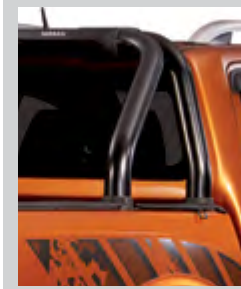
Whether it's for styling or vehicle protection, our nudge bar has been custom designed for a perfect fit and complies with airbag systems.

Available In Black Powder Coated Mild Steel Or Polished Alloy



## TOW BAR

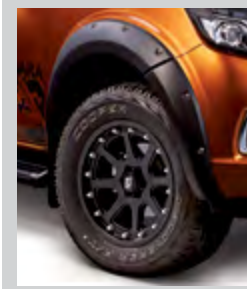
Maximise your versatility with a quality tow bar that provides greater load-bearing capacity for leisure or practical activities. Our tow bar features integrated illumination for better visibility at night when unlocking your Nissan NAVARA.



## SPORTS BAR

Fit a sports bar to your vehicle and enhance your tie down possibilities in the loadbox. A sports bar aids as a styling or tie down accessory and not designed to be weight bearing.

Available In Black Powder Coated Mild Steel Or Polished Alloy



## FENDER FLARES

Add style and protection to your Nissan NAVARA with a set of fender flares specifically designed for a perfect fit. They will protect your paint from the ravages of the weekend trail ride, and they will complete that killer look that you worked so hard to get with all the other accessories you've installed.

Available In Matt Black

# ENHANCED INSIDE & OUT.



**TONNEAU COVER**  
Our high quality tonneau cover features advanced open and close technology along with a clip-in mechanism to facilitate quick and simple fitment and removal. We have tonneau covers on offer that accommodates your Nissan NAVARA with or without roll bar and requires no drilling.

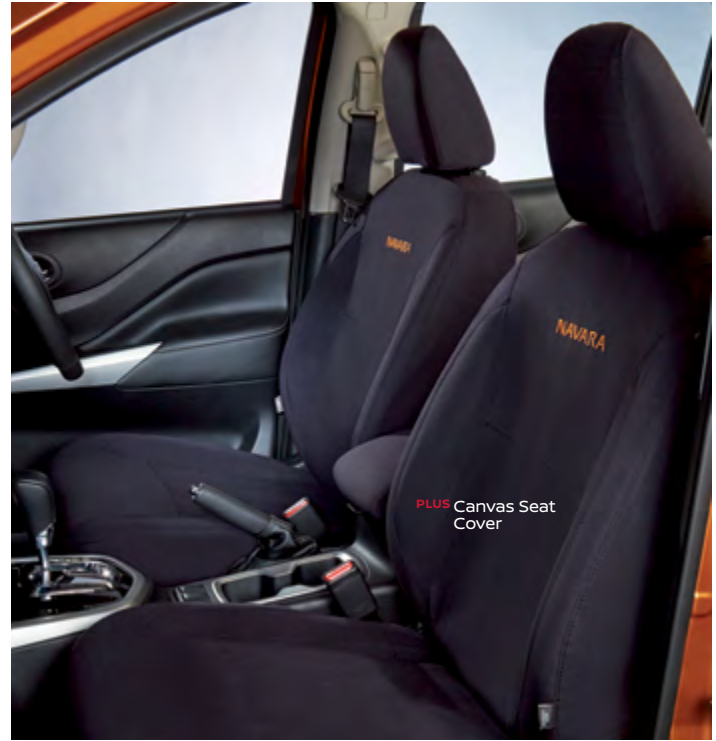


**SCUFF PLATES**  
Our branded scuff plates are custom made to protect the inner door sill against scuff marks and scratches.

Available In Moulded Plastic And Stainless Steel



**CANVAS SEAT COVERS**  
Add extra protection to your vehicle with our high quality aftermarket approved canvas seat covers. Hard wearing and stylish, you can cruise in style and comfort in the toughest environments.



## ALLOY WHEELS

Nissan offers a distinguished range of alloy wheels exclusively available for the all-new Nissan NAVARA. These alloy wheels have been developed keeping safety and strength in mind and make for bold styling.



Black Alloy Wheels XD798 – ADDICT



Black Alloy Wheels XD832 – FUSION



Black Alloy Wheels XD835 – SWIPE

## CANOPIES

Choose from our range of Nissan Approved stainless steel and fibreglass canopies, designed to perfectly suit your Nissan NAVARA. Innovative design ensures your canopy is protected from the elements and colour matching ensures a perfect fit.



## DECAL KITS

Stand out from the crowd and add a sporty touch to your Nissan NAVARA with one of four decal kits to choose from. Our product meets global automotive standards and surpasses all quality standards.



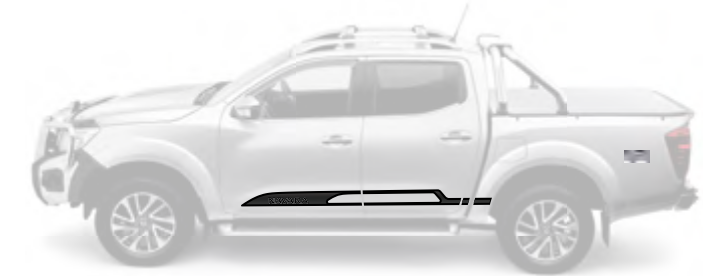
Decal Kit 1



Decal Kit 2 (kit includes bonnet graphics)



Decal Kit 3



Decal Kit 4 (kit includes bonnet graphics)

# PLUS APPROVED ACCESSORIES

ACCESSORIES	MODEL GRADE APPLICATION	
	SE	LE
<b>STYLING - EXTERIOR</b>		
Decal kit 1	X	X
Decal kit 2	X	X
Decal kit 3	X	X
Decal kit 4	X	X
Black 18" alloy wheels XD798 ADDICT - fits the OE 18" tyres	X	X
Black 18" alloy wheels XD832 FUSION - fits the OE 18" tyres	X	X
Black 18" alloy wheels XD835 SWIPE - fits the OE 18" tyres	X	X
Headlamp surrounds	X	X
Tail lamp surrounds	X	X
Fender flares - requires no drilling	X	X
Nudge bar (alloy)	X	X
Nudge bar (black)	X	X
Sportsbar with HMSL (alloy)	X	X
Sportsbar with HMSL (black)	X	X
<b>UTILITY</b>		
Replacement bumper (alloy) - cannot accommodate a winch and under body protection plates	X	X
Replacement bumper (black) - cannot accommodate a winch and under body protection plates	X	X
Towbar with LED downlight	X	X
Cattle rails	X	X
Roof rack for LE model (wingbar racks)		X
Roof rack for LE model (square bar racks)		X
Roof rack wing bar locks (vehicle w/o railings)	X	
Roof rack square bar locks (vehicle w/o railings)	X	
<b>CANOPIES</b>		
<b>FIBRE GLASS CANOPIES</b>		
Beekman fibre glass canopy	X	X
SA Canopy fibre glass canopy	X	X
<b>STEEL CANOPIES</b>		
Stainless smart canopy gullwing	X	X
Stainless smart canopy base	X	X
Optional extra : side door sliding window	X	X
Optional extra : cab slider / front canopy	X	X
Optional extra : rear door mesh	X	X
Optional extra : full kitchen unit	X	X
Optional extra : 3/4 kitchen unit	X	X
Optional extra : air vent (passenger gullwing door)	X	X
Optional extra : roof mounted table	X	X
Optional extra : 2 x internal led lights	X	X

ACCESSORIES	MODEL GRADE APPLICATION	
	SE	LE
<b>PROTECTION</b>		
Loadbox rubber mat	X	X
Headlight covers (clear)	X	X
Bonnet guard (matt black)	X	X
Window visors (matt black)	X	X
<b>SAFETY &amp; SECURITY</b>		
Soft tonneau covers (to accommodate EGR sportsbar)	X	X
Soft tonneau covers (for vehicle without any sportsbar)	X	X
Spare wheel lock	X	X
<b>PROTECTION</b>		
Seat covers for leather seats (Grey)		X
Seat covers for leather seats (Black)		X
Seat covers for leather seats (black with orange NAVARA name)		X
Seat covers for leather seats (grey with orange NAVARA name)		X
Seat covers for cloth seats (grey)	X	
Seat covers for cloth seats (black)	X	
Seat covers for cloth seats (black with orange NAVARA name)	X	
Seat covers for cloth seats (grey with orange NAVARA name)	X	
Scuff plates (stainless)	X	X
Scuff plates (moulded plastic)	X	X

## QUALITY GUARANTEED OUR PROMISE

Nissan Approved Accessories are backed by Nissan's Warranty terms and conditions when purchased through your Nissan Dealer. Warranty periods vary across the range, for more warranty information contact your Nissan dealer.

By choosing Nissan Approved Accessories for your Nissan NAVARA you're ensuring the road ahead is safe, reliable and stylish. A lasting impression in every way.

## COLOURS



WHITE – QM1 (S)



BLACK – G42 (S)



RED – AX6 (S)



GREY – K21 (M)(P)



SILVER – K23 (M)



PEARL WHITE – QX1 (M)(P)



ORANGE – EAU (M)(P)



DARK BLUE – RAA (M)(P)



DARK BROWN – CAQ (M)

M: Metallic  
S: Solid  
P: Pearl

## WHEELS

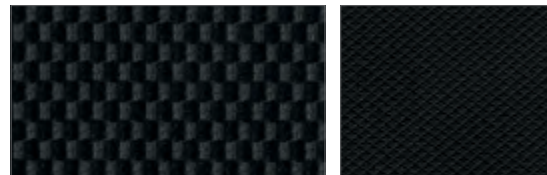


16" ALLOY



18" ALLOY

## TRIMS



GRAPHITE CLOTH (SE grade)



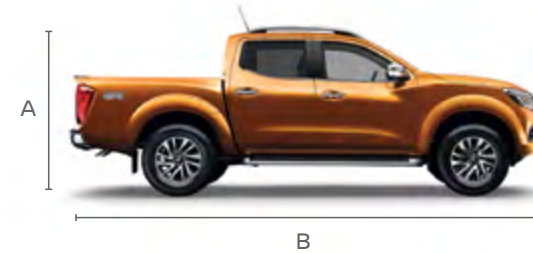
LEATHER (LE GRADE)  
(with heating function and 8-way power).

## DIMENSIONS

A: Overall height: 1 840 MM (with roof bars)  
B: Overall length: 5 255 MM  
C: Overall width: 2 085 MM (with opened mirrors)  
Ground clearance: 226MM (SE), 229MM (LE)

### BED

Height: 474 MM (tailgate lift height)  
Length: 1 578 MM (at floor)  
Width: 1 560 MM (max)



## PEACE OF MIND

### OUR PROMISE TO YOU

At Nissan we keep our promises and take care of our family. Servicing and repairing your Nissan at an authorised Nissan dealership is the way to go. Our Nissan technicians are highly trained specialists that know your Nissan better than anyone. They will use Genuine Nissan Parts, Genuine Nissan Accessories to ensure quality, reliability and to keep your vehicle performing to optimum standards. Nissan aims to keep you and your vehicle on the road with total peace of mind – for as long as possible. **THIS IS A NISSAN AFTERSALES PROMISE.**

**NISSAN**  
**AFTERSALES**

OUR PROMISE. YOUR EXPERIENCE

Model		2.5D SE 4WD AT	2.5D LE 4WD MT	2.5D LE 4WD AT
Body		DC	DC	DC
Drivetrain		4WD	4WD	4WD
Engine		2.5D	2.5D	2.5D
Grade		SE	LE	LE
Transmission		AT	MT	AT
<b>ENGINE</b>				
Engine		YD25 (Mid Output)	YD25 (High Output)	YD25 (High Output)
Displacement	cc	2488	2488	2488
Type		Inline-4 Cylinder, DOHC, 16-valves, Variable Turbocharger (VGS) with Intercooler		
Bore and stroke	mm	89.0 x 100.0	89.0 x 100.0	89.0 x 100.0
Maximum power (kw)	kw/rpm	120/3600	140/3600	140/3600
Maximum torque (Nm)	Nm/rpm	403/2000	450/2000	450/2000
Fuel supply system		Common Rail Direct Injection		
<b>FUEL</b>				
Fuel tank capacity	Litres	80	80	80
Fuel type		Diesel	Diesel	Diesel
<b>TRANSMISSION</b>				
Transmission		7-speed Automatic	6-speed Manual	7-speed Automatic
4WD System		Part-time, Shift-on-the-Fly with Rotary Switch		
Ratio 1st (manual/automatic)		4,887	4,685	4,887
Ratio 2nd (manual/automatic)		3,170	2,479	3,170
Ratio 3rd (manual/automatic)		2,027	1,624	2,027
Ratio 4th (manual/automatic)		1,412	1,208	1,412
Ratio 5th (manual/automatic)		1,000	1,000	1,000
Ratio 6th (manual/automatic)		0,864	0,809	0,864
Ratio 7th (automatic)		0,775	Not applicable	0,775
Ratio Reverse (manual/automatic)		4,041	4,709	4,041
Final drive (manual/automatic)		3,357	3,692	3,357
<b>DIMENSIONS</b>				
Overall length	mm	5255	5255	5255
Overall width (excluding mirrors)	mm	1850	1850	1850
Overall height (without roof rail)	mm	1830	1830	1830
Wheelbase	mm	3150	3150	3150
Ground clearance	mm	226	229	229
Front track	mm	1570	1570	1570
Rear track	mm	1570	1570	1570
Front overhang	mm	870	870	870
Rear overhang	mm	1235	1235	1235
Turning circle (curb to curb)	m	6,2	6,2	6,2
Approach angle	Degrees	33	33	33
Departure angle	Degrees	27,9	27,9	27,9
Ramp break-over angle	Degrees	25,2	25,2	25,2
Load box length - floor	mm	1465	1465	1465
Load box length - top	mm	1503	1503	1503

Model		2.5D SE 4WD AT	2.5D LE 4WD MT	2.5D LE 4WD AT
<b>DIMENSIONS CONTINUED</b>				
Load box width - floor	mm	1490	1490	1490
Load box width - top	mm	1560	1560	1560
Load box width - between wheel arches	mm	1130	1130	1130
Load box width - tailgate opening	mm	1360	1360	1360
Load box height	mm	474	474	474
<b>MASS/CAPACITY</b>				
Gross Combination Mass (GCM)	kg	5910	5910	5910
Gross Vehicle Mass (GVM)	kg	2910	2910	2910
Tare mass	kg	1786	1831	1843
Kerb weight	kg	1836	1881	1893
Payload	kg	1074	1029	1017
Load box capacity	Litres	1111	1111	1111
Gross axle mass (front - laden)	kg	1320	1320	1320
Gross axle mass (rear - laden)	kg	1750	1700	1700
Maximum towing capacity braked	kg	3500	3500	3500
Maximum towing capacity unbraked	kg	750	750	750
<b>HANDLING/MECHANICAL</b>				
Steering type		Engine Rotation Speed Control Power Steering		
Steering column		Manual Tilt		
Front suspension		Independent Double-Wishbone with Coil Spring and Stabilizer Bar		
Rear suspension		5-Link Coil Spring with Shock Absorber		
Hill Start Assist (HSA)		-	Standard	Standard
Hill Descent Control (HDC)		-	Standard	Standard
<b>SAFETY/SECURITY</b>				
Front brakes - ventilated discs		Standard	Standard	Standard
Rear brakes - drum		Standard	Standard	Standard
Anti-lock Braking System (ABS)		Standard	Standard	Standard
Electronic Brakeforce Distribution (EBD)		Standard	Standard	Standard
Brake Assist (BA)		Standard	Standard	Standard
Limited Slip Differential (LSD)		-	Standard	Standard
Vehicle Dynamic Control (VDC) with Traction Control System (TCS)		-	Standard	Standard
Front Passenger - front impact airbag		Standard	Standard	Standard
3-Point Emergency Locking Retractor (ELR) seatbelts (front and rear)		Standard	Standard	Standard
Seatbelts with load limiters and pre-tensioners (front)		Standard	Standard	Standard
Seatbelt height adjustment (front)		Standard	Standard	Standard
Headlights		Halogen with Auto On/Off	LED Projector with Auto On/Off	
Daytime running lights		-	LED Signature	
Front fog lamp		Standard	Standard	Standard
Side turn signal lamp		One-touch flash, on fender	LED, One-touch flash, in outside mirror	
Stop lamp		LED, high mounted		
Collapsible steering column		Standard	Standard	Standard
Door side intrusion bars		Standard	Standard	Standard
Zone body structure		Standard	Standard	Standard

Model		2.5D SE 4WD AT	2.5D LE 4WD MT	2.5D LE 4WD AT
<b>HANDLING/MECHANICAL CONTINUED</b>				
Front and rear crumple zones		Standard	Standard	Standard
Front wiper - 2 speed with variable intermittent and mist		Standard	Standard	Standard
Child safety rear door locks		Standard	Standard	Standard
Electromagnetic lockable fuel lid		Standard	Standard	Standard
Lockable rear tailgate (key)		Standard	Standard	Standard
Nissan Anti-Theft System (NATS) vehicle immobiliser		Standard	Standard	Standard
Vehicle Security System (VSS) alarm		Standard	Standard	Standard
<b>COMFORT AND CONVENIENCE</b>				
Air-conditioning with heater controls and pollen filter		Standard	Standard	Standard
Rear air vents in centre console		Standard	Standard	Standard
Remote control / remote keyless entry		Standard	-	-
Intelligent Key with remote keyless entry		-	Standard	Standard
Push button engine start		-	Standard	Standard
Cruise control		Standard	Standard	Standard
Seating capacity		5	5	5
Seat trim		Cloth	Leather	
Driver seat		6-way with manual slide/recline/height adjustment	8-way with power slide/recline/height/lumbar adjustment	
Passenger seat		4-way with manual slide/recline adjustment		
Headrests with up/down adjustment (front and rear)		Standard	Standard	Standard
Flip-up rear seats		Standard	Standard	Standard
Floor carpet - front and rear		Standard	Standard	Standard
Manual tilt adjustable steering column		Standard	Standard	Standard
Front passenger assist grip		Standard	Standard	Standard
Second row passenger assist grips (2)		Standard	Standard	Standard
Centre console storage		Standard	Standard	Standard
Glove compartment		Standard	Standard	Standard
Dashboard upper storage tray		Standard	Standard	Standard
Front door storage pockets		Standard	Standard	Standard
Rear door storage pockets		Standard	Standard	Standard
Front row cup holders (4) and bottle holders (2)		Standard	Standard	Standard
Second row cup holders (2) and bottle holders (2)		Standard	Standard	Standard
Driver and front passenger seat back pockets		-	Standard	Standard
Driver and front passenger sun visors with illuminated vanity mirrors		Standard	Standard	Standard
Sunglasses holder (overhead console)		Standard	Standard	Standard
Day/night rear view mirror with electric anti-dazzle and compass		Standard	Standard	Standard
Interior room light		Standard	Standard	Standard
Front map light		Standard	Standard	Standard

Model		2.5D SE 4WD AT	2.5D LE 4WD MT	2.5D LE 4WD AT
<b>COMFORT AND CONVENIENCE CONTINUED</b>				
Rear interior light		Standard	Standard	Standard
Front door operated interior lights		Standard	Standard	Standard
12 volt power socket (3)		Standard	Standard	Standard
Window - driver		One-touch auto up/down power window		
Window - passengers		Power window		
Rear window		Fixed		
Rear window demister		Standard	Standard	Standard
<b>INSTRUMENTATION</b>				
Speedometer, tachometer, odometer, trip meter		Standard	Standard	Standard
Digital clock		Standard	Standard	Standard
<b>AUDIO AND CONNECTIVITY</b>				
Audio system		Colour 5" display with tuner/CD/MP3/AUX/USB connectivity		
Bluetooth®		Without voice recognition		
Steering wheel audio controls		Standard	Standard	Standard
Speakers	#	6	6	6
<b>EXTERIOR</b>				
Privacy glass (second row and rear window)		W/Solar Green tinted	W/Solar Green tinted	W/Solar Green tinted
Tie-down points inside bed (4)		Standard	Standard	Standard
12V outlet inside load box		Standard	-	-
Side steps		Standard	Standard	Standard
Roof rails		-	Standard	Standard
Door mirrors		Chrome	Chrome	Chrome
Door mirrors with power adjustment and manual folding		Standard	-	-
Door mirrors with power adjustment/folding and integrated LED indicator lights		-	Standard	Standard
Front bumper body colour		Standard	Standard	Standard
Rear bumper		Chrome	Chrome	Chrome
Door handles		Chrome	Chrome	Chrome
V-Motion front grille		Chrome	Chrome	Chrome
Rear spoiler with protective finisher		Standard	Standard	Standard
Front mud flaps		DP	Standard	Standard
Rear mud flaps		Standard	Standard	Standard
Front towing hook		Standard	Standard	Standard
<b>WHEELS AND TYRES</b>				
Wheel size and type		16" Alloy	18" Alloy	18" Alloy
Tyre		255/70R16	255/60R18	255/60R18
Spare wheel		Full size (Steel)	Full size (AL)	Full size (AL)

Optional equipment can result in an increase/decrease in the unladen weight and consequently affect the payload. Quoted payloads have been determined to allow for factory options or aftermarket solutions that are not accommodated in the standard delivery and services scope. The calculation of the actual payload of a vehicle is the difference between the gross vehicle mass and the curb mass and can only be determined by weighing the vehicle. Due to production tolerances/tyre sizes/type of running gear, the actual dimensions can differ slightly from the figures supplied in this brochure.

**LEGAL NOTICE**

Every effort has been made to ensure that the content of this brochure is correct at the time of going to print (September 2017). This brochure has been produced featuring prototype or accessorised vehicles exhibited at motor shows and, in accordance with the company's policy of continuously improving its products, Nissan reserves the right to change the specification and the vehicles described and shown in this brochure at any time. Nissan dealers will be informed of any such modifications as quickly as possible. Please check with your local Nissan dealer to receive the most up-to-date information. Due to the limitations of the printing processes used, the colours shown in this brochure may differ slightly from the actual colours of the paint and interior trim materials used. All rights reserved. Reproduction in whole or part of this brochure without the written permission from Nissan is forbidden.



**Nissan's commitment to the environment**  
Nissan's environmental philosophy embraces people, vehicles and nature. In the pursuit of a sustainable mobile society, the Nissan Green Program aims to reduce the environmental impact of Nissan vehicles at every stage of the vehicle life cycle, while corporate activities address environmental challenges.

**NISSAN'S commitment to quality:** to provide all customers with a consistently high level of quality, Nissan applies the standard worldwide, to ensure that all Nissan owners enjoy peace of mind for the lives of their vehicles. The approach is based on quality from the customer's perspective on three key elements: 1. The expectation of a smooth driving experience with complete peace of mind. 2. The intangible appeal of a vehicle, its power to captivate and excite, with features that capture attention and imagination. 3. The level of attentiveness and service during the sales process, and long after the sale is concluded.





Nissan Intelligent Mobility moves you one step ahead. In cars that feel like an extension of you, helping you see more and sense more, reacting with you, and sometimes even for you. Nissan Intelligent Mobility is about a better future – moving us to a world that’s safer, more sustainable, and exciting.