

*Bush-tucker tree!*



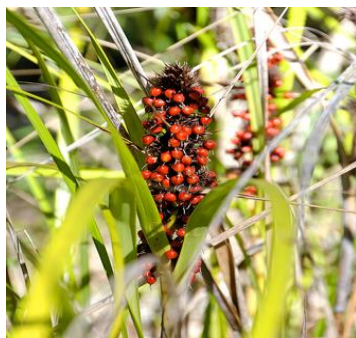
*Gahnia aspera* – family: CYPERACEAE

## SAW SEDGE – SWORD GRASS

Tufted grass-like sedge, 40–80cm tall  
Tall cream/brown flower spikes followed by decorative red-brown seeds

**Cultivation:** Hardy in various situations, dry or moist soils; semi-shade or full sun. Frost tolerant.

A common sedge found from Nth Qld to southern NSW. The leaves are about 80cm long, very rough on the underside and capable of inflicting deep cuts, hence the common name Saw Sedge.



Flowering stems are one metre long, with cream flowers carried in dense terminal clusters. These are followed by decorative long lasting nuts that are brownish red to bright shiny red. This Saw Sedge would be a dramatic addition to native gardens. It tolerates semi-shade and reaches its full potential in moist soils. Plants should be kept away from borders and paths due to the savagery of the foliage. A good specimen for dams, riparian and wet areas.



Indigenous Australians pounded the nuts to produce flour.