

1 **Hadal fauna of the South Sandwich Trench, Southern Ocean: Baited camera survey from the Five**
2 **Deeps Expedition.**

3 Alan J. Jamieson^{1*}, Heather A. Stewart², Johanna N.J., Weston³, Cassandra Bongiovanni⁴

4 ¹Minderoo UWA Deep-Sea Research Centre, School of Biological Sciences and Oceans Institute, The
5 University of Western Australia, IOMRC Building M470, 35 Stirling Highway, Perth, WA 6009

6 ²British Geological Survey, Lyell Centre, Research Avenue South, Edinburgh, UK, EH14 4AP

7 ³School of Natural and Environmental Sciences, Newcastle University, Newcastle Upon Tyne, UK, NE1
8 7RU

9 ⁴Caladan Oceanic LLC, 5909 Luther Lane, Dallas, Texas, US, TX 75225

10 *Corresponding Author: alanj@armatusoceanic.com

11 **Keywords:** Deep Sea, Antarctica, Subduction trench; Snailfish; Amphipoda; Ophiuroidea;
12 Holothuroidea; Crinoidea

13 **Abstract**

14 The South Sandwich Trench is a 965 km long arcuate subduction trench spanning the South Atlantic
15 and Southern oceans, isolated from most other hadal (areas where water depths exceed 6000 m)
16 environments by thousands of kilometres. This feature represents the coldest known hadal ecosystem
17 with ambient sub-zero temperatures recorded from bathyal depths to over 7000 m water depth. Very
18 little research has been carried out into the hadal fauna of this trench since the Russian expeditions
19 of the 1960s and 70s. Here, we report the first visual assessment of hadal fauna from the South
20 Sandwich Trench from a series of seven baited camera and trap deployments between 6044 m and
21 the deepest point at 8265 m water depth, a location called *Meteor Deep*. Three species of hadal fish
22 (Liparidae), with very low population densities were observed at depths shallower than expected,
23 likely due to the piezo-thermal effect decreasing their depth range. Four species of scavenging
24 amphipods were recovered, extending the known distribution of *Eurythenes andhakarae*, *Hirondellea*
25 *dubia*, and *Bathycallisoma schellenbergi* to the South Sandwich Trench. Large densities of brittle stars
26 (Ophiuroidea) were seen in the shallower hadal depths, while dense aggregations of holothurians
27 (Elpididae) were observed within trench-fill basins located along the deep trench axis coincident with
28 a visible surficial layer of surface derived detritus. In addition, gastropods, sponges, and stalked
29 crinoids were observed. Importantly, this study highlights the endemic community present at hadal
30 depth within this somewhat unique high pressure-low temperature environment.

31 Introduction

32 The Austrian geologist Eduard Suess (1831-1914) hypothesized in 1909 that an undersea feature of
33 great depth would lie to the east of the South Sandwich Islands in the Southern Ocean (Suess, 1909).
34 This initial hypothesis was founded on the reported similarities between the South Sandwich Islands
35 and the Lesser Antilles Island arc in the Caribbean Sea. In the latter, it was already known that a deep-
36 water feature, which would later be known as the Puerto Rico Trench, lay towards the north and east
37 (Bencker, 1936; Jamieson et al., 2020). Seventeen years later, in 1926, the German vessel *RV Meteor*
38 confirmed this hypothesis by sounding a depth of 8264 m at where is now known as the northern
39 sector of the trench (Mauer and Stocks, 1933). The exact depth and location of “Meteor Deep” has
40 varied through the intervening century (Zhivago, 2002; Allaby, 2009; Stewart and Jamieson, 2019) but
41 is now known to be 8265 ± 13 m at 55.230° S / 26.173° W (Bongiovanni et al., 2021).

42 Following a series of sounding expeditions in the 1920s and 1930s (Kemp and Nelson, 1931; Herdman,
43 1932, 1948; Heezen and Johnson, 1965), the South Sandwich Trench was found to be an arcuate
44 trench that stretches 965 km between 55° S to 61° S latitude, broadly parallel to the South Sandwich
45 Islands. The trench is formed by the subduction of the southernmost section of the South American
46 Plate beneath the South Sandwich Plate (Stewart and Jamieson, 2019) at a rate of 65–78 mm per year
47 (Smalley et al., 2007).

48 ~~Also~~ in the 1950s, it was proven that life exists to depths over 10,000 m (Bruun, 1951, 1956).
49 Furthermore, these newly coined ‘hadal’ (depths >6000 m) communities exhibited high levels of
50 endemism within the deep subduction trenches (Wolff, 1960; Belyaev, 1966). This endemism was
51 assumed a result of often extreme isolation, whereby trenches deeper than 6000 m are typically
52 partitioned from the next nearest trench of equivalent depth by hundreds or thousands of kilometres
53 (Jamieson, 2015). The drivers of high ‘hadal’ endemism are considered, in part, due to a lack of inter-
54 trench connectivity and unique suites of environmental variables at regional scales promoting local
55 speciation (Jamieson, et al., 2010).

56 On a larger scale, Vinogradova (1959) and Kussakin (1973) both proposed distinct biogeographic
57 regions for the deep Southern Ocean based on high levels of endemism of the deep-sea fauna in
58 general. Within one of the sub-regions or provinces, the ‘Antarctic–Atlantic Subregion’, Belyaev (1989)
59 further proposed the ‘South Antillean Hadal Province’, containing only the South Sandwich Trench to
60 delineate it and its fauna from the surrounding abyssal ecosystems. The hadal ‘South Orkney Trench’
61 (Stewart and Jamieson, 2018) was later added to the **South Antillean Province** by Vinogradova (1997).

62 The South Sandwich Trench hadal fauna are therefore of interest from both biogeographical and
63 ecological perspectives. The trench’s nearest hadal neighbour is the smaller and shallower (6820 m)

64 South Orkney Trench (Vaigachev, 1968), 1068 km to the west (Stewart and Jamieson, 2018). The next
65 hadal feature of similar size and depth is the Atacama Trench, 5243 km to the northwest (Stewart and
66 Jamieson, 2018), parallel to the west coast of South America. All other hadal trench systems are over
67 10,000 km away (Stewart and Jamieson, 2018). The trench is uniquely positioned between the
68 Antarctic and southern temperate zones and straddles the area where the Pacific and Atlantic oceans
69 converge. This location may be significant for tracing the dispersal of deep-sea fauna and evaluating
70 the influence of the Antarctic fauna on the deep South Atlantic communities (Malyutina, 2004).

71 The South Sandwich Islands archipelago and Scotia Arc experience gradients in mean sea-surface
72 productivity. The first is an east-west trend of higher productivity over the trench to the east of the
73 South Sandwich Island chain compared to a marked drop-off west of the islands (Hogg et al., 2021). A
74 second gradient is a north-south trend where low mean primary productivity occurs to the south that
75 increases to the north in the vicinity of the *Meteor Deep*. Peak primary productivity shows the same,
76 but more marked difference between low productivity in the south and high in the north (Hogg et al.,
77 2021) that coincides with an abrupt transition between the “Antarctic” and “sub-Antarctic” bioregions
78 delineated at Saunders Island (Roberts, 2012). This creates a north-south divide in the middle of the
79 trench that also coincides with a shorter annual sea ice duration over the north of the trench than the
80 south (Perissinotto et al., 1992).

81 While **most all** other hadal trenches experience ambient bottom temperatures of between 1 and 4°C,
82 the South Sandwich and South Orkney trenches are the only known sub-zero hadal environments
83 (Belyaev, 1989). These factors suggest the South Sandwich Trench could provide critical insights for
84 hadal ecology. However, working at such depths coupled with extremely low temperatures, sea ice
85 and often highly adverse weather conditions have meant it has been sampled infrequently,
86 particularly at the hadal depths, relative to other trenches.

87 **Biological sampling at hadal depths: 20th Century**

88 In 1963, the United States Naval Ship *Eltanin* visited the South Sandwich Trench and performed three
89 bottom trawls at ~6660-7700 m and deployed cameras to 6710, 6880 and 7610 m water depth
90 (Belyaev, 1989). All stations were between 54°S and 57°S. The trawl to 7686 m obtained 20 specimens
91 of polychaetes (Polychaeta). No information ~~available~~ about the two other trawls is publicly available.

92 In early 1971, the RV *Anton Bruun* performed five bottom trawls between 6052 and 8004 m, and two
93 dredges (6875 and 7281 m) in the South Sandwich Trench between 55°S and 56°S. The number of
94 trawled species average 34.2 ± 15 s.d. and totalled 16,200 specimens. The dredges recovered six and
95 12 species comprising 20 and 144 specimens respectively (Belyaev, 1989).

96 Also in 1971, the Russian RV *Akademik Kurchatov* (cruise 11) visited the South Sandwich Trench (and
97 South Orkney Trench) to examine the composition and distribution patterns of the hadal community
98 (Andriyashev et al., 1973). Near *Meteor Deep*, they successfully performed 15 trawls and 11 grabs. The
99 trench fauna was considered rich and highly diverse, with hauls ranging from 35–40 species and 636–
100 7,300 specimens. The catches were dominated by Elaspoda (Holothuroidea), Ophiura (Ophiuridae),
101 Siboglinidae (formally Pogonophora), and Polychaeta (Annelida). Other less numerous groups such as
102 sponges, crinoids, sea urchins, isopods, and sipunculids were also recovered (Malyutina, 2004).

103 **Biological sampling at hadal depths: 21st Century**

104 The first colour image of the hadal South Sandwich Trench was captured in 2002 from a single
105 deployment of Sediment Profile Imaging (SPI) camera (Diaz, 2004) during the Antarctic Benthic Deep-
106 Sea Biodiversity Project (ANDEEP) II Expedition on board RV *Polarstern* (Brandt et al., 2004a). The
107 vertical camera mounted on the SPI took eight images spanning 6.4 m² of the seafloor at 6333 m water
108 depth. It imaged a dark greyish brown sandy-silt seafloor with pebbles and over 75% surface
109 bioturbation including faecal coils, tracks, and feeding mounds and pits (Howe et al., 2004). The
110 observed megafauna comprised of anemones (Actiniaria), Ophiuridea, Crinoidea, Holothuroidea and
111 unidentified shrimp (Howe et al., 2004).

112 The ANDEEP II Expedition also **successfully** obtained 18 specimens of 7 species using an epibenthic
113 sledge at 6348 m water depth (Brandt et al., 2004b). Assessment of isopod diversity at this site
114 revealed just two families, Munnopsididae and Haploniscidae, with the former being most abundant.
115 One specimen of the bivalve *Vesicomya (Kelliella) sirenkoi* (Egorova, 1998) was recovered from 6348
116 m depth using an epibenthic sledge (Linse, 2004). The infaunal communities from two multicore sites
117 at 6316 and 6319 m recovered 12 specimens of 10 species including the polychaetes *Travisia*
118 *glandulosa* McIntosh, 1879 (Travisiidae) and an unidentified species in the *Prionospio* genus (Blake
119 and Narayanaswamy, 2004). The meiofaunal community at 6316-6319 m water depth was dominated
120 by nematodes belonging to 19 genera with *Monhystera* (Monhysteridae) being the most dominant
121 (Vanhove et al., 2004). These combined studies represented a small foray into hadal depths within a
122 larger, predominantly abyssal, research programme. In a practical sense, the ANDEEP II expedition
123 likely **represent** a more complete abyssal data set in which to compare community structure with the
124 Antarctic shelf, rather than offering any major insight into the deeper trench ecosystem. Our
125 understanding of the biodiversity of true hadal fauna in this trench is still derived from the trawl and
126 dredge campaigns of the 20th Century.

127 This study is centred around the Five Deeps Expedition's visit to the South Sandwich Trench in early
128 2019 and reports on the baited camera and trap results. These new imaging data provide the first

129 visual assessment of hadal fauna across the entire depth range of this trench. We also collated every
130 published record of hadal species from the South Sandwich Trench, cross checked and corrected
131 where appropriate via the World Register of Marine Species (WoRMS 2021) as a resource for future
132 sampling campaigns in the future (See Supplemental Data).

133 **Materials and Methods**

134 The Five Deeps Expedition was a privately funded circumglobal expedition to dive a crewed
135 submersible (DSV *Limiting Factor*) to the deepest point in each of the five oceans (Stewart and
136 Jamieson, 2019; Jamieson, 2020). The South Sandwich Trench Expedition took place 2nd-10th February
137 2019, supported by the DSSV *Pressure Drop*, that first utilised an EM124 hull-mounted multibeam
138 echosounder (MBES; Kongsberg, Norway) to map the trench axis (Figure 1A) (see Bongiovanni et al.
139 (2021) for specifics on MBES data acquisition and processing). Once submersible dive sites were
140 identified based on the MBES, three identical free-fall landers (Skaff, Flere and Closp) were deployed
141 as navigation aids that were also equipped with baited HD video cameras (IP Multi SeaCam 3105; Deep
142 Sea Power and Light, San Diego, CA), baited invertebrate traps (15 cm Ø x 100cm funnel tubes) and
143 conductivity, temperature, and depth (CTD) profilers (SBE 49 FastCAT; SeaBird Electronics, Bellevue,
144 WA). The bait was whole mackerel (Scombridae). Two additional baited camera landers (Bad Spoon
145 and Bad Ape) were deployed that were equipped with bespoke HD video cameras and baited
146 invertebrate traps. The DSV *Limiting Factor* (Jamieson et al., 2019) was then deployed to survey the
147 seafloor via four HD video cameras. On this expedition, however, the submersible's cameras failed to
148 return any usable footage. Hereafter, we describe the results from the landers only.

149 **Study sites**

150 The Five Deeps Expedition had three sampling sites. The first site, named *Factorian Deep* (60.479°S /
151 25.542°W), was located at the southern end of the trench (Figure 1B). *Factorian Deep* represents the
152 deepest point in the Southern Ocean (south of 60°S). Five lander deployments were undertaken at
153 this site between 6044 and 7342 m. The second site was *Bitter Deep* (57.432°S / 24.048°W) located
154 roughly halfway along the roughly north-south oriented trench axis (Figure 1C). There three landers
155 were deployed but only one recovered data in the form of physical amphipod samples and CTD data
156 from 8082 m. The third site was at the deepest point of the entire South Sandwich Trench, *Meteor*
157 *Deep* (Figure 1D) (55.230°S / 26.173°W) where one lander was deployed to 8265 m. Both *Bitter Deep*
158 and *Meteor Deep* are located north of 60°S, thus technically in the South Atlantic Ocean (Bongiovanni
159 et al., 2021). Details of the deployment sites are listed in Table 1.

160 **Species identification**

161 Image-derived species-level identification is difficult in some deep-sea fishes. This problem is
162 exacerbated by there being no records of hadal fish from the South Sandwich Trench on which to
163 refer. To avoid using species names without confidence, we followed the recommendations of Horton
164 et al. (2021) regarding the identification of image-based data. We identified based on an established
165 family or genus and used 'sp.' to denote unknown species followed by a number relating to
166 morphotype and the code 'SAND' to identify the locality for comparison with other studies from the
167 Five Deeps image archive. For example, Liparid sp. 2-SAND denotes an unknown species and genus of
168 the Liparidae family with the 2nd identified body form from the South Sandwich Trench. Additionally,
169 we used '*indet*' to indicate an indeterminable species, and '*stet*' to signify a further identification level
170 has not been attempted, following Sigovini (2016).

171 Identification of epifauna is more difficult often due to cryptic speciation, small body size and
172 examination of key morphological characters from underwater imaging being insufficient. In the
173 results, we resort to class-level descriptions. Further, we do discuss likely identifications in the
174 discussion based on historical findings.

175 Upon recovery and initial sorting of the physical samples from the invertebrate traps, amphipods were
176 preserved using 70% ethanol. The samples were morphologically identified to the lowest rank
177 possible, following Dahl (1959), Barnard and Ingram (1990), Barnard and Karaman (1991), d'Udekem
178 d'Acoz and Havermans (2015), Kilgallen (2015), Kilgallen and Lowry (2015), and Weston et al. (2021a).
179 Identification was conducted with a stereomicroscope (Wild Heerbrugg M8). Dissected appendages
180 were temporarily mounted with glycerol and imaged with Leica DMI8 inverted microscope and
181 DFC295 camera. Whole-type specimens were photographed with a Canon EOS 750D DSLR camera,
182 Tamron SP 90mm f/2.8 VC USD Macro 1:1 VC Lens with a polarising filter, and Falcon Eyes CS-730 copy
183 stand and processed with Helicon Focus and Helicon Remote software (Helicon Soft).

184 **Results**

185 **Bathymetry and environmental conditions**

186 A little over 15,000 km² of new MBES data were collected spanning the entire length of the trench
187 (Figure 1). The deepest point of the Southern Ocean, the *Factorian Deep*, was recorded as 7432 ± 13
188 m and the *Meteor Deep* was 8265 ± 13 m. The depth of *Factorian Deep* was verified by the submersible
189 dive as 7434 ± 3 m (Bongiovanni et al., 2021). *Bitter Deep* has a maximum depth of 8082 ± 13 m
190 (57.432°S / 24.048°W) as derived from the MBES dataset.

191 The sea surface temperature at the *Factorian*, *Bitter* and *Meteor* deeps were 0.5, 1.7 and 3.1°C
192 respectively (Figure 2). Beyond 500m depth, the temperatures decreased reaching 0°C at 2000 m
193 (*Factorian*) 2800 (*Bitter*) and 3500 m (*Meteor*). Their respective temperature minimums were -0.33°C

194 (4000 m), -0.26°C (4500 m) and -0.22°C (5000 m). Thereafter, the temperature increased due to
195 adiabatic heating to 0°C at 7500, 7200 and 7400 m respectively. The bottom temperatures were 0.01°C
196 (*Factorian Deep*; 7432 m), 0.13°C (*Bitter Deep*, 8082 m) and 0.16°C (*Meteor Deep*, 8265 m). Beyond
197 500 m, salinity at all three sites remained approximately linear, decreasing slightly, but averaging 34.6
198 ± 0.01 S.D.

199 In the absence of physical samples, visual interpretation of the geology was based on grosser
200 characteristics rather than classic examples of grain size and/or mineral grains. The observed seafloor
201 substrates within the South Sandwich Trench were variable. Ranging from potential outcrop of
202 subaqueous volcanic deposits at 6044 m (Figure 3A), to relatively firm sediment blanket visible in the
203 foreground with up to boulder sized talus blocks in the background at 6640 and 7099 m (Figure 3B-C),
204 to very soft and flat sediments, likely a comparatively thick sediment blanket, at the deepest sites
205 within trench-fill basins along the trench axis with particularly conspicuous surficial fluff layers of
206 organic matter (Figure 3D-E).

207 Demersal fauna

208 Three species of hadal snailfish (Liparidae) were seen. The shallowest lander deployment, 6044 m,
209 recorded two species of hadal snailfish. The first, *Liparid* sp. *indet.* 2-SAND (Figure 4A), had large black
210 eyes and a pink-blue (darker and more blue anteriorly) robust body form. The second, *Paraliparis* sp.
211 1-SAND (Figure 4B), was in comparison more slender and blue-pink in colour. At 6640 m, *Paraliparis*
212 sp. 1-SAND was seen again in addition to a third species, *Liparid* sp. *indet.* 3-SAND (Figure 4C). *Liparid*
213 sp. *indet.* 3-SAND exhibited the 'ethereal' body morphology described by Linley et al. (2016). It had a
214 large head relative to body, a prominent snout, elongated pectoral fins, and a fragile, largely
215 translucent body. Also present at 6640m was an unknown macrourid, *Macrourid* sp. *stet.* 1-SAND,
216 likely to be of the *Coryphaenoides* genus (Figure 4D). The only other nektonic fauna observed by the
217 baited cameras were amphipods and mysids, both of which were too small to confidently identify
218 from video. Very few were seen at 6044 m, but their numbers increased substantially with depth
219 (Figure 4E-G). The size of the trap capture did not necessarily reflect the increase in observed
220 presence, which is likely due to current speed and direction. No fish were observed at the 7099 m site
221 or deeper.

222 Four scavenging amphipod species (Superfamily: Lysianassoidea) were collected across the sites
223 (Table 2). *Eurythenes andhakarae* d'Udekem d'Acoz & Havermans, 2015 (Figure 5A) was found in
224 single numbers in the three shallowest depths. *Bathycallisoma schellenbergi* (Birstein & Vinogradov,
225 1958) (Scopeloceridae) were recovered from 6640 m and the deepest four depths, with over 2000
226 collected from 7400 m (Figure 5B). *Hirondellea dubia* Dahl, 1959, was found at 6640 m and the deepest

227 four depths with large catches at 7400 and 8265 m. The fourth species **is** an unidentified and likely
228 new species of *Tryphosella* Bonnier, 1893, which was collected at 7400 and 7439 m.

229 **Epifauna**

230 At 6044 m, no sessile organisms were observed on camera. However, at 6640 m, the presence of
231 brittle stars (Ophiuroidea) increased starkly over time (Figure 6A-B). Although the resolution of the
232 video is insufficient to quantify their numbers, a reasonable estimate would be >100 ophiuroids
233 moving around the lander after several hours on the seafloor. These brittle star populations were
234 interspersed with the occasional gastropod (Figure 6C). At 7099 m, ophiuroids were again aggregating
235 towards the lander over time but in far few numbers, estimated at <5. At 7099 m, the lander landed
236 directly next to a stalked crinoid (Crinoidea; Figure 6D). Another 12 stalked crinoids were seen
237 attached to rocks in the background among several glass sponges (Hexactinellida; Figure 6E).

238 At the deeper locations at the *Meteor*, *Bitter* and *Factorian Deeps*, no epifauna were observed
239 throughout the main observation periods. During the moments prior to the lander touching down on
240 the sediment, many holothurians of the Elpididae family could be seen (Figure 6F). The density of
241 elpidids was very high, over 100 individuals on a visible seafloor area of 2 m². The bow wave from the
242 lander touching down on the extremely soft sediment was sufficiently disruptive to relocate all the
243 holothurians that never returned to the area during the 3, 2 and 8 h observation periods respectively.

244 **Discussion**

245 As part of the Five Deeps Expedition, this study conducted the first visual assessment of hadal fauna
246 across the entire depth range of South Sandwich Trench, including the deepest point. The South
247 Sandwich Trench hosts a suite of geological and environmental attributes that are uncommon among
248 hadal trenches. In this habitat, we found three species of snailfish, four species of scavenging
249 amphipods, and large aggregations of brittle stars, stalked crinoids, and elpidid holothurians.

250 **Environmental conditions**

251 This study confirmed that the ambient temperature in much of the hadal depths of the South
252 Sandwich Trench is sub-zero. Furthermore, the geomorphology was more complex than anticipated
253 with habitat and substrates more complex than previously observed (e.g., Figure 3A and 6E; Stewart
254 and Jamieson, 2018, 2019). The large holothurian densities at the deeper trench axis and the large
255 aggregation of deposit feeding ophiuroids in the upper trench indicate the influence of the highly
256 productive surface waters on regional biomass through high particulate flux (Malyutina 2004; Hogg et
257 al., 2021). Such a visible surficial fluff layer of surface derived detritus is unusual in trenches at these
258 depths (personal observation), as are the high densities of holothurians. Although increasing biomass

259 with depth in Antarctic trenches is documented (Vinogradova et al., 1993), and large holothurian
260 densities are known from trenches (Wolff, 1970; Andriyashev et al., 1973), they are seldom observable
261 from a static fixed-point camera.

262 **Epifauna**

263 The identity of the holothurians is unclear from these data. Historical trawl efforts have identified ten
264 species: three from the Order Apodida and seven from the family Elpidiidae Théel, 1882. They do not
265 appear to be of the genera *Peniagone* Théel, 1882 or *Amperima* Pawson, 1965. The holothurians
266 visually captured in this study are possibly a combination of the known species: *Elpidia decapoda*
267 Belyaev, 1975, *Elpidia lata* Belyaev, 1975, *Elpidia ninae* Belyaev, 1975, or *Kolga hyalina* Danielssen and
268 Koren, 1879. Which species, if any, are dominant, remains unresolved.

269 The identification of ophiuroids is also notoriously difficult from video. There are however four known
270 species from the trench (Belyaev, 1989), all within the same depth range observed in this study:
271 *Ophiurochaeta* sp. Matsumoto, 1915 (Ophiomyxidae), *Amphiophiura* sp. Matsumoto, 1915
272 (Ophiopyrgidae) *Ophiuroglypha irrorata polyacantha* (Mortensen, 1933) (Ophiuridae) and
273 *Ophioplinthus* sp. Lyman, 1878 (Ophiuridae). Similar to the holothurians, the dominant species was
274 uncertain.

275 Two gastropods are known from the South Sandwich Trench (Belyaev 1989), albeit their taxonomic
276 identifications are tenuous: *Tectibranchiata* sp. G.O. Sars, 1878 (Scaphandridae) and what is referred
277 to as "*Gastropoda prosobranchia*" H. Adams and A. Adams, 1853 (Turridae) in Belyaev (1989). Both
278 have depths ranges overlapping with this study (7206-7934 m and 6052-8116 m, respectively). The
279 gastropods in this study appears to be of the Neogastropoda order which includes the superfamilies
280 Buccinoidea (that includes Buccinidae) and Conoidea (that includes Turridae).

281 There is one known species of sponge of the Class Hexactinellida known from the South Sandwich
282 Trench (Belyaev, 1989), but it belongs to the Rossellidae, Schulze, 1885, family. This is likely not what
283 was observed in this study. While there are no known records of crinoids, stalked or otherwise, from
284 the South Sandwich Trench, other than an observation of 'Crinoidea' from 6333 m (Howe et al., 2004),
285 it is likely they are of the Bathycrinidae, Bather, 1899, family.

286 **Demersal fauna**

287 The fish of the South Sandwich Trench differed to that of other published accounts of hadal fish,
288 specifically with regards to abundance, dominance, and vertical zonation (Jamieson et al., 2009; Fujii
289 et al., 2010; Linley et al., 2016). While the deepest fish in any given trench are consistently liparids,
290 there is typically one abundant species, interspersed with another rarer species. Notably, three

291 liparids species were observed in the South Sandwich Trench. None of the species appeared to be
292 numerically dominant over another and all in very low numbers. Another interesting observation is
293 that in all trenches where liparids are present, they are found to be most abundant between 7000 and
294 8000 m water depth, with maximum numbers around 7500 m (Fujii et al., 2010; Linley et al., 2017).
295 Contrastingly, in the South Sandwich Trench they were not seen deeper than 6640 m, which is 1000
296 m shallower than predicted.

297 Pressure tolerance is not an exclusive effect of hydrostatic pressure but is heavily influenced by the
298 ambient temperature. Higher temperatures can enable tolerance of higher pressure, also known as
299 the piezo-thermal effect (Cossins and MacDonald 1989; Childress 1995). While the ambient
300 temperature of other trenches is between 1 and 4°C, the South Sandwich snailfish are adapted to
301 temperatures of $-0.05\text{ }^{\circ}\text{C} \pm 0.09\text{ s.d.}$ The piezo-thermal effect may help explain why the range of the
302 South Sandwich snailfish are 1000 m shallower to snailfish from other trench systems and regions
303 (Linley et al., 2017).

304 Of the three different morphotypes, Liparid sp. *indet.* 2-SAND had a body form more akin to the
305 *Notoliparis* Andriashev, 1975 and *Careproctus* genera and is relatively similar compared to the other
306 hadal snailfish species (e.g., *Notoliparis kermadecensis* (Nielsen, 1964) and *Pseudoliparis swirei*
307 Gerringer & Linley, 2017). The only other record of liparids from this region is *Careproctus*
308 *sandwichensis* Andriashev & Stein, 1998 recovered from 5435-5453 m in the South Sandwich Trench
309 (Andriashev and Stein, 1998). Based on external morphology, Liparid sp. *indet.* 2-SAND could be *C.*
310 *sandwichensis* but physical samples would be required as confirmation. We can confidently place the
311 second, and smaller, darker morphotype *Paraliparis* sp. 1-SAND, in that genus based on its external
312 morphology. The third morphotype, Liparid sp. *indet.* 3-SAND, resembles the 'ethereal' body form,
313 which has been similarly observed 8178 m at the Mariana Trench (Linley et al., 2016). However, while
314 this body type has been observed, a specimen has never been recovered. As such, a genus has not yet
315 been determined or established (Linley et al., 2016).

316 In comparison to other hadal features, the overall species richness of scavenging amphipods was low
317 (Fujii et al., 2013; Lacey et al., 2016; Weston et al., 2021b). Yet, each of the four species is ecologically
318 notable. The surprising find in this study is perhaps the discovery of *Hirondellea dubia* in the South
319 Sandwich Trench. To date, this species has only been known from southwest Pacific trenches i.e.
320 Kermadec, Tonga, and New Hebrides trenches (Lacey et al., 2016) and the Mariana Trench (Ritchie et
321 al. 2015). The nearest known population of *H. dubia* to the South Sandwich Trench is in the Tonga
322 Trench, some 10,745 km to the west (Stewart and Jamieson, 2018). Additionally, this is the first record
323 of *Bathycallisoma schellenbergi* in the Southern Ocean. This is less surprising as *B. schellenbergi* has
324 been found at the nearby South Orkney Trench (1068 km away; Kilgallen and Lowry, 2015) and is

325 considered to be a widespread, pan-oceanic species but is always limited to hadal depths (Belyaev,
326 1989; Blankenship et al., 2006; Lacey et al., 2016; Weston et al., 2021b). *Eurythenes andhakarae* is
327 known to be localised to the Southern Ocean between 3069-4625 m (d'Udekem d'Acoz and
328 Havermans, 2015; Havermans, 2016). Here, we find that *Eurythenes andhakarae* has a eurybathic
329 vertical distribution (4030 m), similar to other sister species (Havermans, 2016; Weston et al., 2021a;
330 2021b). Moreover, this highlights the importance of expeditions to resolve the geographic and
331 bathymetric ranges of species more fully. In addition, a consistent depth trend was observed -
332 *Eurythenes* at the shallower hadal depths of the trench and *B. schellenbergi* and *H. dubia* at the deeper
333 end, a common trend in most trenches studied to date (Blankenship et al., 2006; Fujii et al., 2013,
334 Lacey et al., 2016; Weston et al., 2021a). However, to date these species identifications are based on
335 morphology, therefore are *sensu lato* pending molecular analysis to confirm individual species,
336 populations or population connectivity with other trenches.

337 **Notable absences**

338 In addition to scavenging amphipods, predatory liparids, and the epifaunal taxa (i.e., holothurians,
339 ophiuroids and crinoids), there are few notable absent faunal groups. For example, most baited
340 camera surveys at these depths show a conspicuous ~~presence~~ of the penaeoidea (Decapoda), often
341 *Cerataspis monstrosus* Gray 1828 in the abyssal-hadal transition zone and almost always
342 *Benthescymus crenatus* Bate 1881 in the upper trench depths (Swan et al., 2021). Indeed, Swan et al.
343 (2021) reported on the global distribution of lower abyssal and hadal decapoda (including the
344 observational data from this study) and concluded that bait-attending decapods were absent at
345 depths exceeding 4000 m in both the Arctic and Southern oceans. Given the presence of *Lysianassoid*
346 amphipods that *B. crenatus* typically preys upon, and the salinity and pressure being equal to most
347 areas they are encountered, their absence is surprising. However, Howe et al., (2004) mentions the
348 sighting of 'shrimp' at 6333 m but does not elaborate further on its identification. Similar to depth
349 zonation patterns of liparids, it seems plausible that the sub-zero temperatures are playing an
350 inhibiting role in their absence from the South Sandwich Trench.

351 Another notable absence was gelatinous fauna. Jamieson and Linley (2021) collated 136 recent lander
352 observations from 14 deep sites spanning all oceans (including this dataset) of hydrozoans,
353 scyphozoans, larvaceans and ctenophores and found no observations of any in the Arctic or in the
354 South Sandwich Trench. However, a high frequency of near-bottom larvaceans were found in the
355 nearest two study sites to the South Sandwich Trench: the South Shetland Trench (5200 m water
356 depth) ~2000 km to the west and the Agulhas Fracture Zone (5493 m water depth) ~3000 km to the
357 northeast. Hydrozoans, mostly Trachymedusae were also observed at these other two sites, but not
358 in the South Sandwich Trench. Given the proximity of the abyssal South Shetland Trench to the hadal

359 South Sandwich Trench, this incongruence may be an abrupt boundary between abyssal and hadal, or
360 perhaps more likely a regional environmental or temporal trend, as larvaceans are now known from
361 hadal depths (e.g., Java and Kermadec trenches) and from other sub-zero environments (South
362 Shetland Trench; Jamieson and Linley 2021).

363 **Conclusion**

364 The South Sandwich Trench is a relatively isolated hadal ecosystem that exhibits sub-zero
365 temperatures, and partial sea ice cover ~~which is unique to all but one other hadal trench.~~ However, a
366 similar hadal fauna to the better-studied trenches still persists. The vertical distribution of fish, and
367 potentially the absence of groups such as the scavenging decapods, are likely due to the extremely
368 low temperatures compared to most other trenches. Furthermore, the high densities of holothurians
369 on the trench axis and the ophiuroids on the upper slopes suggest a significant energy input from the
370 surface. However, the spatial and temporal heterogeneity in mean and peak surface productivity, and
371 sea ice cover across the South Sandwich Trench could act as catalysts of ~~latitudinally~~ variation in
372 diversity and abundance.

373 Future studies should aim to address three main ecological aspects: 1) the piezo-thermal effect on the
374 physiology that drives vertical zonation at extreme depths, 2) the direct measurement of the particular
375 organic carbon flux to the hadal depths of the trench and its role in supporting elevated populations
376 of some taxa at spatial and temporal scales, 3) the genetic connectivity of species present in both the
377 South Sandwich Trench and other hadal trenches that are often isolated by thousands of kilometres
378 of abyssal and bathyal seafloor and 4) comparison of the hadal species to their non-hadal Southern
379 Ocean relatives.

380 **Acknowledgements**

381 This work was supported by the 'Hadal Zones of our Overseas Territories' project, granted by the
382 ~~Darwin Initiative,~~ funded by the UK Government (DPLUS093). Sea time and logistics were supported
383 by the *Five Deeps Expedition*, funded by Victor Vescovo of Caladan Oceanic LLC (USA). We thank the
384 captain, crew and company of the DSSV *Pressure Drop*, particularly Stuart Buckle, Charles Ferguson,
385 Alan Dankool and Shane Eigler. We also thank Paul Yancey (Whitman College, US), Leah Brown
386 (Newcastle University, UK), and Aileen Bohan for their participation at sea. HAS publishes with the
387 permission of the Executive Director of the British Geological Survey (United Kingdom Research and
388 Innovation).

389

390 **Figure Legends**

391 **Figure 1.** A-The South Sandwich Trench with new Five Deeps Expedition acquired bathymetry (colour)
392 overlaid on GEBCO_2019 bathymetry (greyscale). B-The *Factorian Deep*, Southern Ocean. C-The *Bitter*
393 *Deep*, South Atlantic Ocean. D-The *Meteor Deep*, South Atlantic Ocean. E-Regional location map. Red
394 dots mark the deepest points in the trench (*Meteor Deep*) and the Southern Ocean (*Factorian Deep*).
395 Black crosses on panels B-D mark the sample stations ~~on panels B-D mark the sample stations~~ listed
396 in Table 1. All bathymetry sourced from Gebco Compilation Group (2019), Bongiovanni et al. (2021)
397 and Caladan Oceanic LLC (2021).

398 **Figure 2.** Vertical temperature profiles for *Meteor Deep* (A) and *Bitter Deep* (B) and *Factorian Deep* (C)
399 in the South Sandwich Trench.

400 **Figure 3.** Seafloor substrates of the South Sandwich Trench. A – Subaqueous volcanic deposits (6044
401 m; *Factorian Deep*), B and C– firm sediment with talus comprising large boulders (7099 and 6640 m
402 respectively; *Factorian Deep*), D and E – soft sediment drape within enclosed basins located on the
403 trench axis (D at 7439 m; *Factorian Deep*; E at 8266 m; *Meteor Deep*). The latter two represent the
404 deepest point in the Southern Ocean and South Sandwich Trench respectively.

405 **Figure 4.** Demersal fauna of the South Sandwich Trench. A - Liparid sp. *indet.* 2-SAND (6044 m), B -
406 *Paraliparis* sp. 1-SAND (6044-6640 m), C - Liparid sp. *indet.* 3-SAND (6640 m), D - Macrourid sp. *stet.*
407 1-SAND (6640 m), E – scavenging amphipod aggregation at 6640 m, F – scavenging amphipod
408 aggregation at 7099 m, and G the largest aggregation of scavenging amphipods at 7439 m despite
409 burial of the bait in soft sediment.

410 **Figure 5.** Two scavenging amphipod species recovered from the South Sandwich Trench. A -
411 *Eurythenes andhakarae* (7099 m); and B – *Bathycallisoma schellenbergi* (8266 m). Scale bar represents
412 1 cm.

413 **Figure 6.** Epifauna of the South Sandwich Trench. A – aggregation of ophiuroids (6640 m), B – Single
414 ophiuroid (6640 m), C – gastropod (6640 m), D – close-up of crinoid (7099 m), E – magnified and
415 enhance image of crinoids and sponges (7099 m), F – high density of elpidid holothurians at 7400m at
416 the point of lander touchdown with magnified inset showing characteristic tubular feet of Elpididae.

417

418 **Tables**

419 **Table 1.** Deployment details of the landers deployments in the South Sandwich Trench. Bottom time
420 represents the time the traps were on the seafloor while film time is the duration of the filming period
421 post landing. * indicates an estimated time.

Deployment	Date	Lander	Latitude	Longitude	Depth (m)	Location	Bottom time/ film time (min)
SST_SK1_7400	3/2/2019	Skaff	-60.4783	-25.5467	7432	<i>Factorian Deep</i>	486/486
SST_FL1_7400	3/2/2019	Flere	-60.4783	-25.5383	7400	<i>Factorian Deep</i>	500*/0
SST_BS1_7000	3/2/2019	Bad Spoon	-60.4933	-25.5350	7099	<i>Factorian Deep</i>	641/433
SST_BA1_6500	3/2/2019	Bad Ape	-60.5050	-25.5333	6640	<i>Factorian Deep</i>	770/520
SST_CL1_6000	3/2/2019	Closp	-60.5250	-25.5283	6044	<i>Factorian Deep</i>	125/125
SST_FL2_8100	5/2/2019	Flere	-57.5350	-23.9717	8082	<i>Bitter Deep</i>	125/125
SST_FL3-8200	10/2/2019	Flere	-55.2298	-26.1731	8265	<i>Meteor Deep</i>	172/172

423

424 **Table 2.** Scavenging amphipod samples and counts collected from baited funnel traps in the South
425 Sandwich Trench. All samples were identified based on morphological.

Species	6044	6640	7099	7400	7432	8082	8265
<i>Eurythenes andhakarae</i>	1	1	1	-	-	-	-
<i>Bathycallisoma schellenbergi</i>	-	34	-	2178	37	34	339
<i>Hirondellea dubia</i>	-	>1000	-	>2000	575	54	>1000
<i>Tryphosella</i> sp.	-	-	-	132	203	-	-

426

427 **References**

- 428 Allaby, M., 2009. *Oceans: a scientific history of oceans and marine life*. Infobase Publishing.
- 429 Andriyashev, A., Vinogradova, N.G., Voronina, N.M., Parin, N.V., Filatova, Z.A., 1973. Pelagic And
430 Bottom Fauna of South-Atlantic (Results of Eleventh Cruise Of RV *Akademik-Kurchatov*). *Oceanology-*
431 *USSR*, 13(1), 26-36.
- 432 Andriashev, A.P., Stein, D.L 1998. Review of the snailfish genus *Careproctus* (Liparidae,
433 Scorpaeniformes) in Antarctic and adjacent waters. *Contr. Sci. Natl. Hist. Mus. Los Angeles County*,
434 470, 1-63.
- 435 Barnard, J.L., Ingram, C.L., 1990. Lysianassoid Amphipoda (Crustacea) from deep-sea thermal vents.
436 *Smithson. C. Zool.* 499, 1-80.
- 437 Barnard, J.L., Karaman, G.S., 1991. The families and genera of marine gammaridean Amphipoda
438 (except marine gammaroids) Part 2. *Rec. Aust. Mus. Suppl.* 13, 419–866

439 Belyaev, G.M., 1966. Bottom fauna of the ultra-abysal depths of the world ocean. *Akademia Nauka*
440 *SSSR*, Trudy Instituta Okeanologii Akademii Nauk SSSR, 591, 1-248.

441 Belyaev, G.M., 1975. New species of holothurians of the genus *Elpidia* from the southern part of the
442 Atlantic Ocean. Trudy Instituta Okeanologii Akademii Nauk SSSR, 103, 259-280.

443 Bencker, H., 1936. The naming of Nares and Puerto Rico Deeps. *Hydrographic Rev.* 13, 90-94.

444 Birstein, Y.A., Vinogradov, M.E., 1958. Pelagicheskie gammaridy (Amphipoda, Gammaridea) severo-
445 zapadnoi chasti Tikhogo Okeana. [Pelagic Gammaridea from the northwestern Pacific Ocean]. Trudy
446 Instituta Okeanologii Akademija Nauk S.S.S.R., 27, 219-257

447 Blake, J.A., Narayanaswamy, B.E., 2004. Benthic infaunal communities across the Weddell Sea Basin
448 and South Sandwich Slope, Antarctica. *Deep Sea Res. Pt. II.* 51(14-16), 1797-1815.
449 <https://doi.org/10.1016/j.dsr2.2004.07.014>

450 Blankenship, L.E., Yayanos, A.A., Cadien, D.B., Levin, L.A., 2006. Vertical zonation patterns of
451 scavenging amphipods from the hadal zone of the Tonga and Kermadec Trenches. *Deep Sea Res. Pt. I.*
452 53(1), 48-61. <https://doi.org/10.1016/j.dsr.2005.09.006>

453 Bongiovanni, C., Stewart, H.A., Jamieson, A.J., 2021. High-resolution multibeam sonar bathymetry of
454 the deepest place in each ocean. *Geosci. Data J.* 00, 1-16. <https://doi.org/10.1002/gdj3.122>

455 Brandt, A., De Broyer, C., Gooday, A.J., Hilbig, B., Thomson, M.R., 2004a. Introduction to ANDEEP
456 (ANTarctic benthic DEEP-sea biodiversity: colonization history and recent community patterns)—a
457 tribute to Howard L. Sanders. *Deep Sea Res. Pt. II.* 51(14-16), 1457-1465.
458 <https://doi.org/10.1016/j.dsr2.2004.08.006>

459 Brandt, A., Brökeland, W., Brix, S., Malyutina, M., 2004b. Diversity of Southern Ocean deep-sea
460 Isopoda (Crustacea, Malacostraca)—a comparison with shelf data. *Deep Sea Res. Pt. II.* 51(14-16),
461 1753-1768. <https://doi.org/10.1016/j.dsr2.2004.06.033>

462 Bruun, A.F., 1951. The Philippine Trench and its bottom fauna. *Nature*, 168(4277), 692-693.

463 Caladan Oceanic LLC, 2021. Five Deeps Expedition to map the South Sandwich Trench (spanning the
464 Atlantic and Southern oceans). British Geological Survey. (Dataset).
465 <https://doi.org/10.5285/143e304e-b9d5-43bf-b323-f2ab517bc18b>

466 Childress, J.J., 1995. Are there physiological and biochemical adaptations of metabolism in deep-sea
467 animals? *Trends Ecol. Evol.* 10(1), 30-36. [https://doi.org/10.1016/S0169-5347\(00\)88957-0](https://doi.org/10.1016/S0169-5347(00)88957-0)

468 Cossins, A.R., Macdonald, A.G., 1989. The adaptation of biological membranes to temperature and
469 pressure: fish from the deep and cold. *J. Bioenerg. Biomembr.* 21(1), 115-135.

470 d'Udekem d'Acoz, C., Havermans, C., 2015. Contribution to the systematics of the genus *Eurythenes*
471 *Si Smith* in scudder, 1882 (Crustacea: Amphipoda: Lysianassoidea: Eurytheneidae). *Zootaxa*, 3971, 1–
472 80. <https://doi.org/10.11646/zootaxa.4196.3.9>

473 Dahl, E., 1959. Amphipoda from depths exceeding 6000 m. *Galathea Rep.* 1, 211-241.

474 Danielssen, D.C., Koren, J., 1879. Fra den norske Nordhavsexpedition. Echinodermer 3. *Nyt Mag.*
475 *Naturvid*, 25, 83-140.

476 Diaz, R.J., 2004. Biological and Physical processes structuring deep-sea surface sediments in the Scotia
477 and Weddell Seas, Antarctica. *Deep Sea Res. Pt II.* 512, 1515-1532.
478 <https://doi.org/10.1016/j.dsr2.2004.06.022>

479 Fujii, T., Jamieson, A.J., Solan, M., Bagley, P.M., Priede, I.G., 2010. A large aggregation of liparids at
480 7703 m depth and a reappraisal of the abundance and diversity of hadal fish. *BioScience*, 60(7), 506-
481 515. <https://doi.org/10.1525/bio.2010.60.7.6>

482 Fujii, T., Kilgallen, N.M., Rowden, A.A. Jamieson, A.J., 2013. Deep-sea amphipod community structure
483 across abyssal to hadal depths in the Peru-Chile and Kermadec trenches. *Mar. Ecol. Prog. Ser.* 492,
484 125-138. <https://doi.org/10.3354/meps10489>

485 GEBCO Compilation Group, 2019. *GEBCO 2019 Grid* (doi:10.5285/836f016a-33be-6ddc-e053-
486 6c86abc0788e). Available from: [http://www.gebco.net/data_and_products/gridded_bathymetry](http://www.gebco.net/data_and_products/gridded_bathymetry_data/)
487 [data/](http://www.gebco.net/data_and_products/gridded_bathymetry_data/) [Accessed August 2019]

488 Havermans, C. 2016. Have we so far only seen the tip of the iceberg? Exploring species diversity and
489 distribution of the giant amphipod *Eurythenes*. *Biodiversity* 17, 12–25.
490 <https://doi.org/10.1080/14888386.2016.1172257>

491 Heezen, B.C. Johnson, G.L., 1965. The South Sandwich Trench. *Deep Sea Res.* 12(2), 185-197.

492 Herdman, H.F.P., 1932. Report on soundings taken during the *Discovery* Investigations 1926-1932,
493 *Discovery Rep.* 6, 205-236.

494 Herdman, H.F.P., 1948, Soundings taken during *Discovery* investigations, 1932-1939. *Discovery Rep.*
495 25, 39-106.

496 Hogg, O.T., Downie, A.L., Vieira, R.P., Darby, C., 2021. Macrobenthic Assessment of the South
497 Sandwich Islands Reveals a Biogeographically Distinct Polar Archipelago. *Front. Mar. Sci.* 8:650241.

498 Horton, T., Marsh, L., Bett, B.J., Gates, A.R., Jones, D.O., Benoist, N., Pfeifer, S., Simon-Lledó, E.,
499 Durden, J.M., Vandepitte, L., Appeltans, W., 2021. Recommendations for the standardisation of open

500 taxonomic nomenclature for image-based identifications. *Front. Mar. Sci.* 8, 620702.
501 <https://doi.org/10.3389/fmars.2021.620702>

502 Howe, J.A., Shimmield, T.M., Diaz, R., 2004. Deep-water sedimentary environments of the
503 northwestern Weddell Sea and South Sandwich Islands, Antarctica. *Deep Sea Res. Pt II.* 51(14-16),
504 1489-1514. <https://doi.org/10.1016/j.dsr2.2004.07.011>

505 Jamieson, A.J., 2015. *The Hadal Zone; Life in the Deepest Oceans'*. Cambridge University Press.

506 Jamieson, A.J., 2020. The Five Deeps Expedition and an update of full ocean depth exploration and
507 explorers. *Mar. Tech. Soc. J.* 54(1), 6-12. <https://doi.org/10.4031/MTSJ.54.1.1>

508 Jamieson, A.J., Linley, T.D., 2021. Hydrozoans, scyphozoans, larvaceans and ctenophores observed *in*
509 *situ* at hadal depths. *J. Plank. Res.* 43(1), 20-32. <https://doi.org/10.1093/plankt/fbaa062>

510 Jamieson, A.J., Fujii, T., Solan, M., Matsumoto, A.K., Bagley, P.M., Priede, I.G., 2009. Liparid and
511 macrourid fishes of the hadal zone: *in situ* observations of activity and feeding behaviour. *P. Roy. Soc.*
512 *Lond. B Bio.* 276(1659), 1037-1045. <https://doi.org/10.1098/rspb.2008.1670>

513 Jamieson, A.J., Fujii, T., Mayor, D.J., Solan, M., Priede, I.G. 2010. Hadal Trenches: the ecology of the
514 deepest places on Earth. *Trends Ecol. Evol.* 25(3), 190-197.
515 <https://doi.org/10.1016/j.tree.2009.09.009>

516 Jamieson, A.J., Ramsey, J., Lahey, P., 2019. Hadal manned submersible. *Sea Technol.* 60(9), 22-24.

517 Jamieson, A.J., Stewart, H.A., Nargeolet, P.H., 2020. Exploration of the Puerto Rico Trench in the mid-
518 twentieth century: Today's significance and relevance. *Endeavour*, 44(1-2), 100719.
519 <https://doi.org/10.1016/j.endeavour.2020.100719>

520 Kemp, S., Nelson, A.L., 1931. The South Sandwich Islands. *Discovery Rep.* 3, 133-198.

521 Kilgallen, N.M., 2015 Three new species of *Hirondellea* (Crustacea, Amphipoda, Hirondelleidae) from
522 hadal depths of the Peru-Chile Trench. *Mar. Biol. Res.* 11, 34-48.
523 <https://doi.org/10.1080/17451000.2014.889309>

524 Kilgallen, N.M., Lowry, J.K., 2015. A review of the scopelocheirid amphipods (Crustacea, Amphipoda,
525 Lysianassoidea), with the description of new taxa from Australian waters. *Zoosyst Evol.* 91, 1-43.
526 <https://doi.org/10.3897/zse.91.8440>

527 Kussakin, O.G., 1973. Peculiarities of the geographical and vertical distribution of marine isopods and
528 the problem of deep-sea fauna origin. *Mar. Biol.* 23(1), 19-34. <https://doi.org/10.1007/BF00394108>

529 Lacey, N.C., Rowden, A.A., Clark, M.R., Kilgallen, N.M., Linley, T., Mayor, D.J., Jamieson, A.J., 2016.
530 Community structure and diversity of scavenging amphipods from bathyal to hadal depths in three
531 South Pacific Trenches. *Deep Sea Res. Pt I.* 111, 121-137. <https://doi.org/10.1016/j.dsr.2016.02.014>

532 Linley, T.D., Gerringer, M.E. Yancey, P.H., Drazen, J.C. Weinstock, C.L., Jamieson A.J., 2016. Fishes of
533 the hadal zone including new species, *in situ* observations and depth records of hadal snailfishes. *Deep*
534 *Sea Res. Pt I.* 114, 99-110. <https://doi.org/10.1016/j.dsr.2016.05.003>

535 Linley, T.D., Stewart, A., McMillan, P., Clark, M., Gerringer, M.E., Drazen, J.C., Fujii, T., Jamieson, A.J.,
536 2017. Bait attending fishes of the abyssal zone and hadal boundary: community structure, functional
537 groups and species distribution in the Kermadec, New Hebrides and Mariana trenches. *Deep Sea Res.*
538 *Pt I.* 121, 38-53. <https://doi.org/10.1016/j.dsr.2016.12.009>

539 Linse, K., 2004. Scotia Arc deep-water bivalves: composition, distribution and relationship to the
540 Antarctic shelf fauna. *Deep Sea Res. Pt II.* 51(14-16), 1827-1837.
541 <https://doi.org/10.1016/j.dsr2.2004.07.016>

542 Lyman, T., 1878. Ophiuridae and Astrophytidae of the "Challenger" Expedition. Part I. *Bull. Mus.*
543 *Compar. Zool. Harvard College, Cambr. Mass.* 5(7), 65-168.

544 Malyutina, M., 2004. Russian deep-sea investigations of Antarctic fauna. *Deep Sea Res. Pt II.* 51(14-
545 16), 1551-1570. <https://doi.org/10.1016/j.dsr2.2004.07.012>

546 Matsumoto, H., 1915. A new classification of the Ophiuroidea: with descriptions of new genera and
547 species. *P. Acad. Nat. Sci. Phila.* 43-92.

548 Maurer, H., Stocks, T., 1933. *Die Echolotungen des "Meteor"*. De Gruyter.

549 Mortensen, T., 1933. Ophiuroidea. *The Danish Ingolf Expedition*, 4(8), 1-121

550 Perissinotto, R., Laubscher, R., Mcquaid, C., 1992. Marine productivity enhancement around Bouvet
551 and the South Sandwich Islands (SouthernOcean). *Mar. Ecol. Prog. Ser.* 88, 41

552 Ritchie, H., Jamieson, A.J., Piertney, S.B., 2015. Phylogenetic relationships among hadal amphipods of
553 the Superfamily Lysianassoidea: Implications for taxonomy and biogeography. *Deep Sea Res. Pt I.* 105,
554 119-131. <https://doi.org/10.1016/j.dsr.2015.08.014>

555 Roberts, J. O., 2012. Ecology and Management of Range Edge Populations: The Case of Toothfish
556 Species at the South Sandwich Islands. Doctoral Thesis. London: Imperial College London.

557 Sigovini, M., Keppel, E., Tagliapietra, D., 2016. Open Nomenclature in the biodiversity era. *Meth. Ecol.*
558 *Evol.* 7(10), 1217-1225. <https://doi.org/10.1111/2041-210X.12594>

559 Smalley Jr, R., Dalziel, I.W.D., Bevis, M.G., Kendrick, E., Stamps, D.S., King, E.C., Taylor, F.W., Lauría, E.,
560 Zakrajsek, A., Parra, H., 2007. Scotia arc kinematics from GPS geodesy. *Geophys. Res. Lett.* 34(21),
561 L21308. <https://doi.org/10.1029/2007GL031699>

562 Stewart, H.A., Jamieson, A.J., 2018. Habitat heterogeneity of hadal trenches: considerations and
563 implications for future studies. *Prog. Oceanogr.* 161, 47-65.
564 <https://doi.org/10.1016/j.pocean.2018.01.007>

565 Stewart, H.A., Jamieson, A.J., 2019. The five deeps: The location and depth of the deepest place in
566 each of the world's oceans. *Earth-Sci. Rev.* 197, 102896.
567 <https://doi.org/10.1016/j.earscirev.2019.102896>

568 Suess, E., 1909. *The Face of the Earth: Das Antlitz Der Erde* (Vol. 4). Clarendon Press.

569 Swan, J.A., Jamieson A.J., Linley, T.L., Yancey, P.Y., 2021. Worldwide distribution and depth limits of
570 decapod crustaceans (Penaeoidea, Oplophoroidea) across the abyssal-hadal transition zone of eleven
571 subduction trenches and five additional deep-sea features. *J. Crust. Biol.* 41(1), p.ruaa102.
572 <https://doi.org/10.1093/jcbiol/ruaa102>

573 Vaigachev, A.Z., 1968. Discovery of a deep-sea trench near the South Orkney Islands. *Biological*
574 *Reports of Soviet Antarctic Expeditions (1955–1958)*, 1, 62–64 (in Russian).

575 Vanhove, S., Vermeeren, H., Vanreusel, A., 2004. Meiofauna towards the South Sandwich Trench
576 (750–6300 m), focus on nematodes. *Deep Sea Res. Pt II.* 51(14-16), 1665-1687.
577 <https://doi.org/10.1016/j.dsr2.2004.06.029>

578 Vinogradova, N.G., 1959. The zoogeographical distribution of the deep-water bottom fauna in the
579 abyssal zone of the ocean. *Deep Sea Res.* 5, 205–208. [https://doi.org/10.1016/0146-6313\(58\)90012-](https://doi.org/10.1016/0146-6313(58)90012-1)
580 1

581 Vinogradova, N.G., 1977. Fauna of the continental shelf and slope and abyssal. In: *Biology of the*
582 *Ocean. 1. Biological Structure of the Ocean.* Nauka, Moscow, 178–198 (in Russian).

583 Vinogradova, N.G., 1997. Zoogeography of the abyssal and hadal zones. *Adv. Mar. Biol.* 32, 325–387.
584 [https://doi.org/10.1016/S0065-2881\(08\)60019-X](https://doi.org/10.1016/S0065-2881(08)60019-X)

585 Wolff, T., 1960. The hadal community, an introduction. *Deep Sea Res.* 6, 95-124.
586 [https://doi.org/10.1016/0146-6313\(59\)90063-2](https://doi.org/10.1016/0146-6313(59)90063-2)

587 Vinogradova, N.G., Gebruk, A.V., Romanov, V.N., 1993. Some new data on the Orkney Trench ultra
588 abyssal fauna. *The Second Polish Soviet Antarctic Symposium*, 213-221.

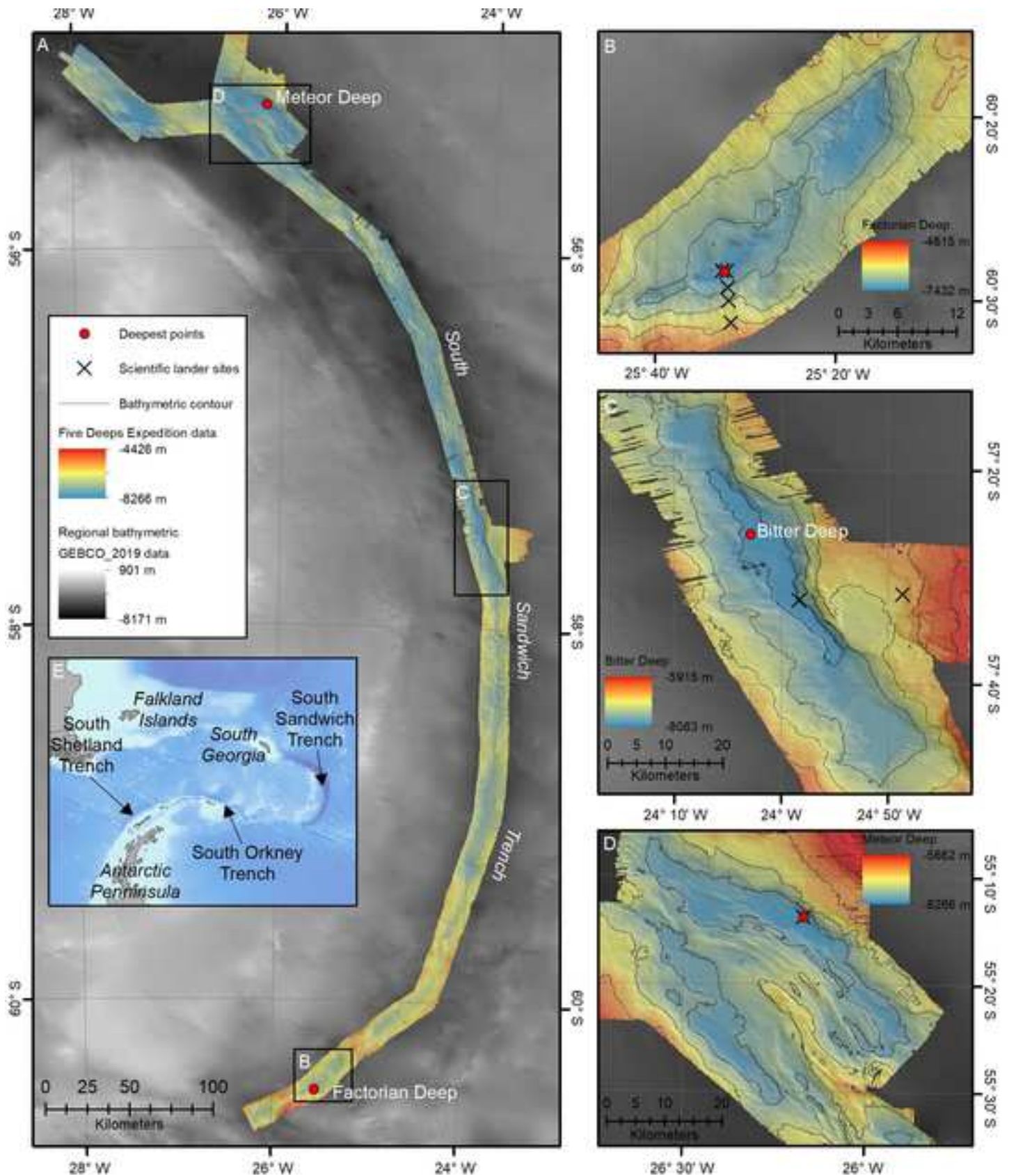
589 Weston, J.N.J., Espinosa-Leal, L., Wainwright, J.A., Stewart, E.C.D., González, C.E., Linley, T.D., Reid,
590 W.D.K., Hidalgo, P., Oliva, M.E., Ulloa, O., Wenzhöfer, F., Glud, R.N., Escibano, R., Jamieson, A.J.,
591 2021a. *Eurythenes atacamensis* sp. nov. (Crustacea: Amphipoda) exhibits ontogenetic vertical
592 stratification abyssal and hadal depths in the Atacama Trench, eastern South Pacific Ocean. Mar.
593 Biodivers. 51(3), 1-20. <https://doi.org/10.1007/s12526-021-01182-z>

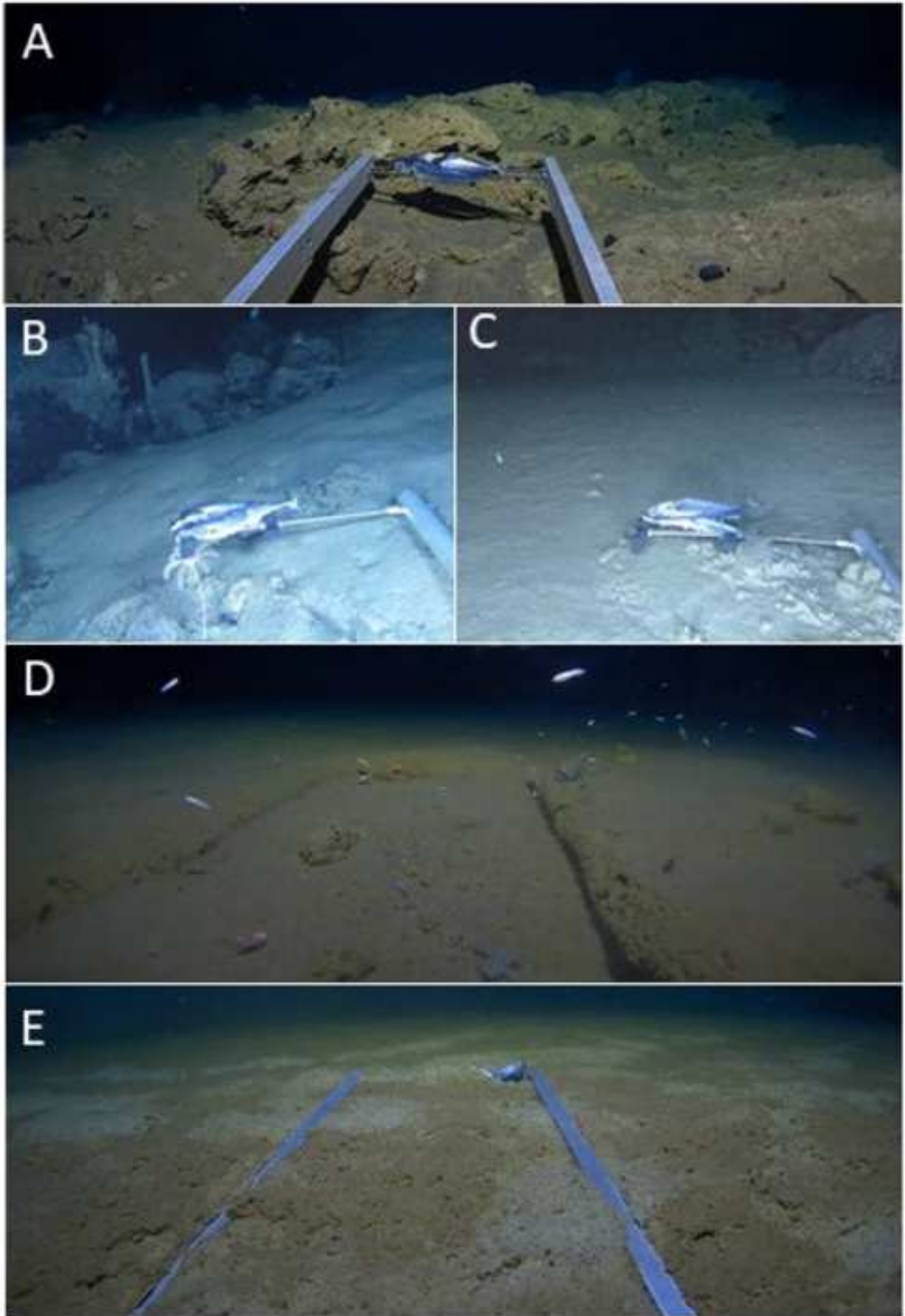
594 Weston, J.N.J., Peart, R.A., Stewart, H.A., Ritchie, H., Piertney, S.B., Linley, T.D., Jamieson, A.J., 2021b.
595 Scavenging amphipods from the Wallaby-Zenith Fracture Zone: Extending the hadal paradigm beyond
596 subduction trenches. Mar. Biol. 168(1), 1-14. <https://doi.org/10.1007/s00227-020-03798-4>

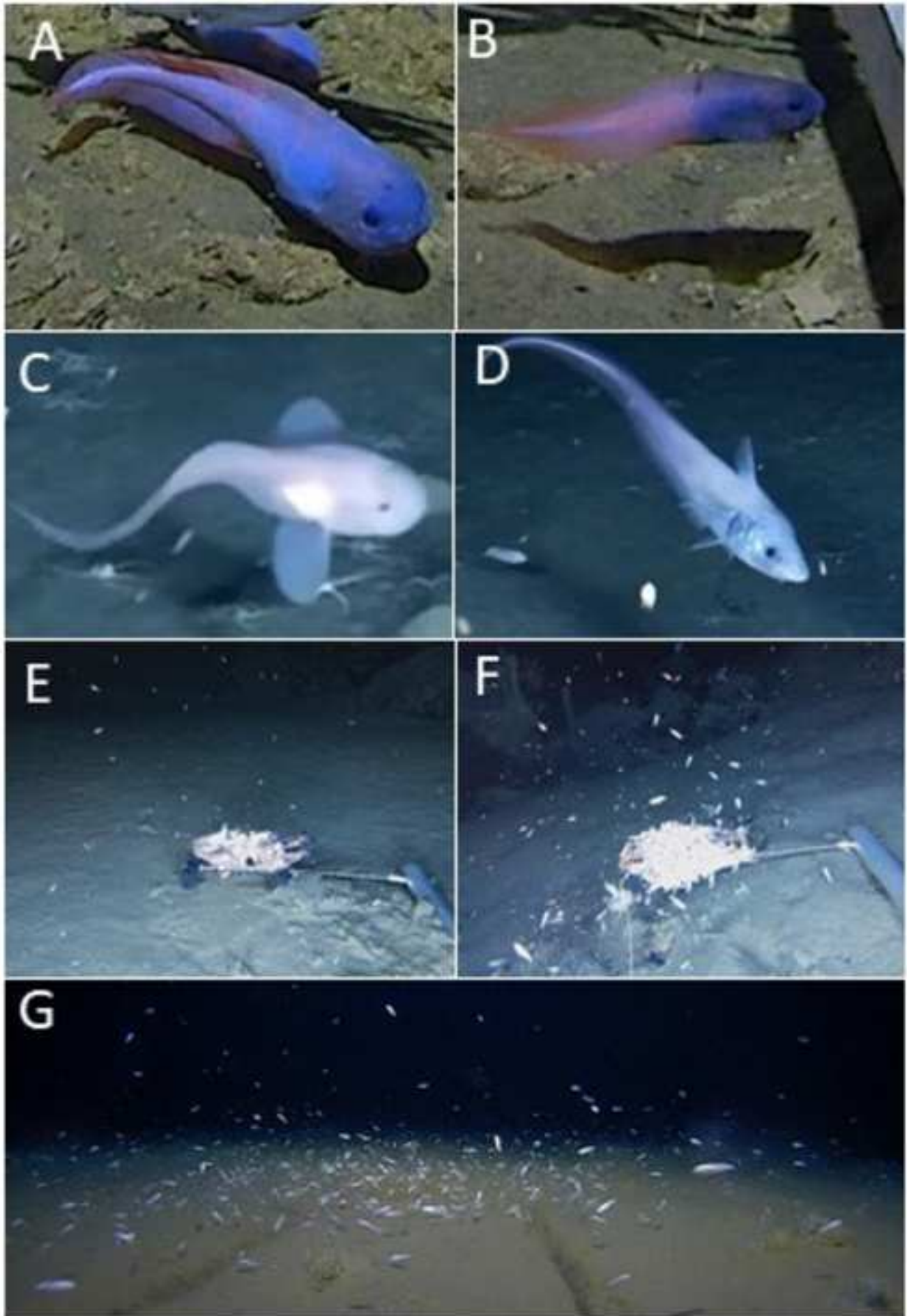
597 Wolff, T., 1970. The concept of the hadal or ultra-abyssal fauna. Deep Sea Res. 17(6), 983-1003.
598 [https://doi.org/10.1016/0011-7471\(70\)90049-5](https://doi.org/10.1016/0011-7471(70)90049-5)

599 WoRMS Editorial Board (2021). World Register of Marine Species. Available from
600 <http://www.marinespecies.org> at VLIZ. Accessed 2021-09-09. doi:10.14284/170

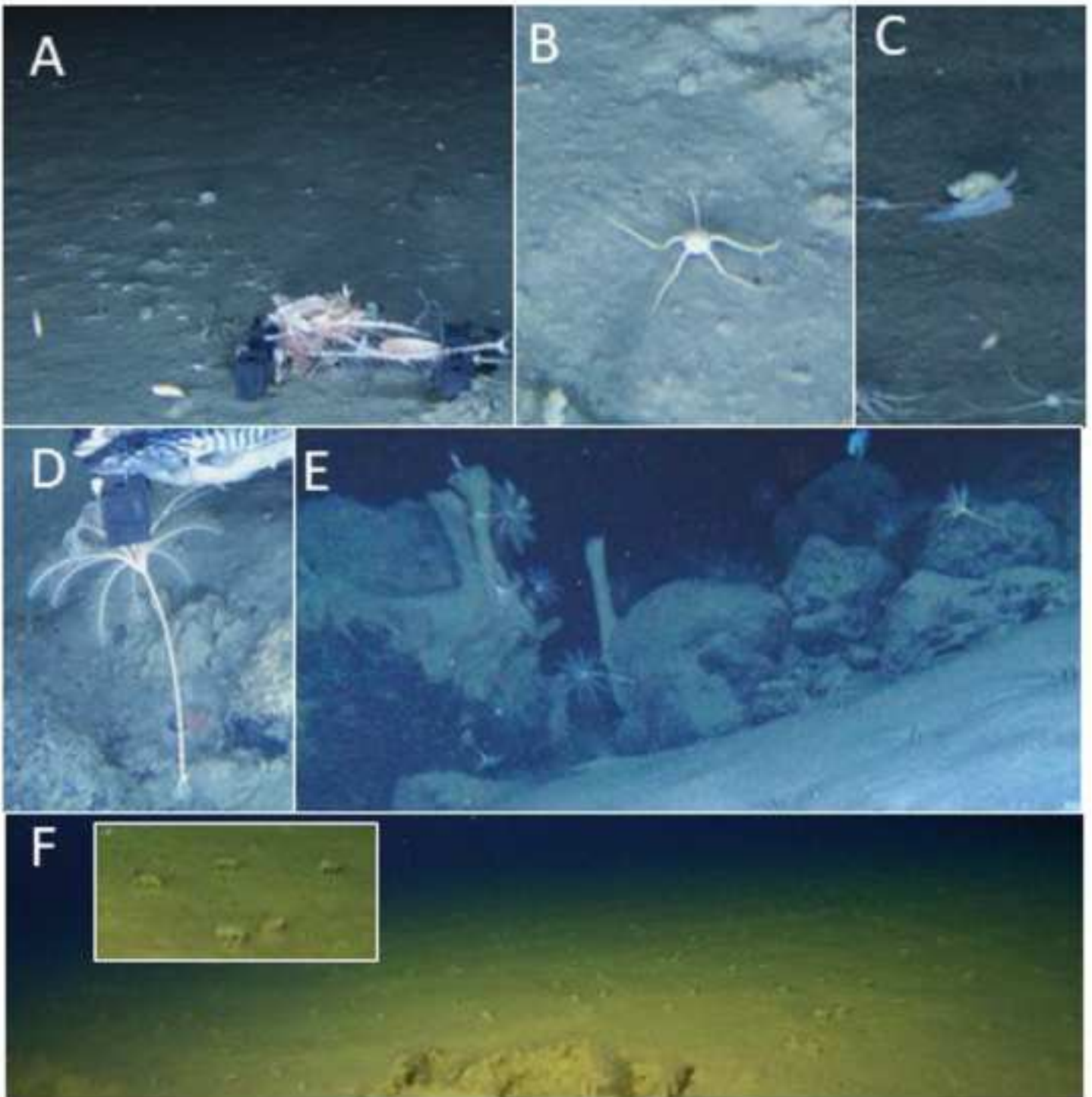
601 Zhivago, A., 2002. Structural evolution of the Scotia Sea floor during the Paleogene- Quaternary period
602 (West Antarctic). In: VII International Congress, www.vitiaz.ru/congress/en/thesis/145.html.

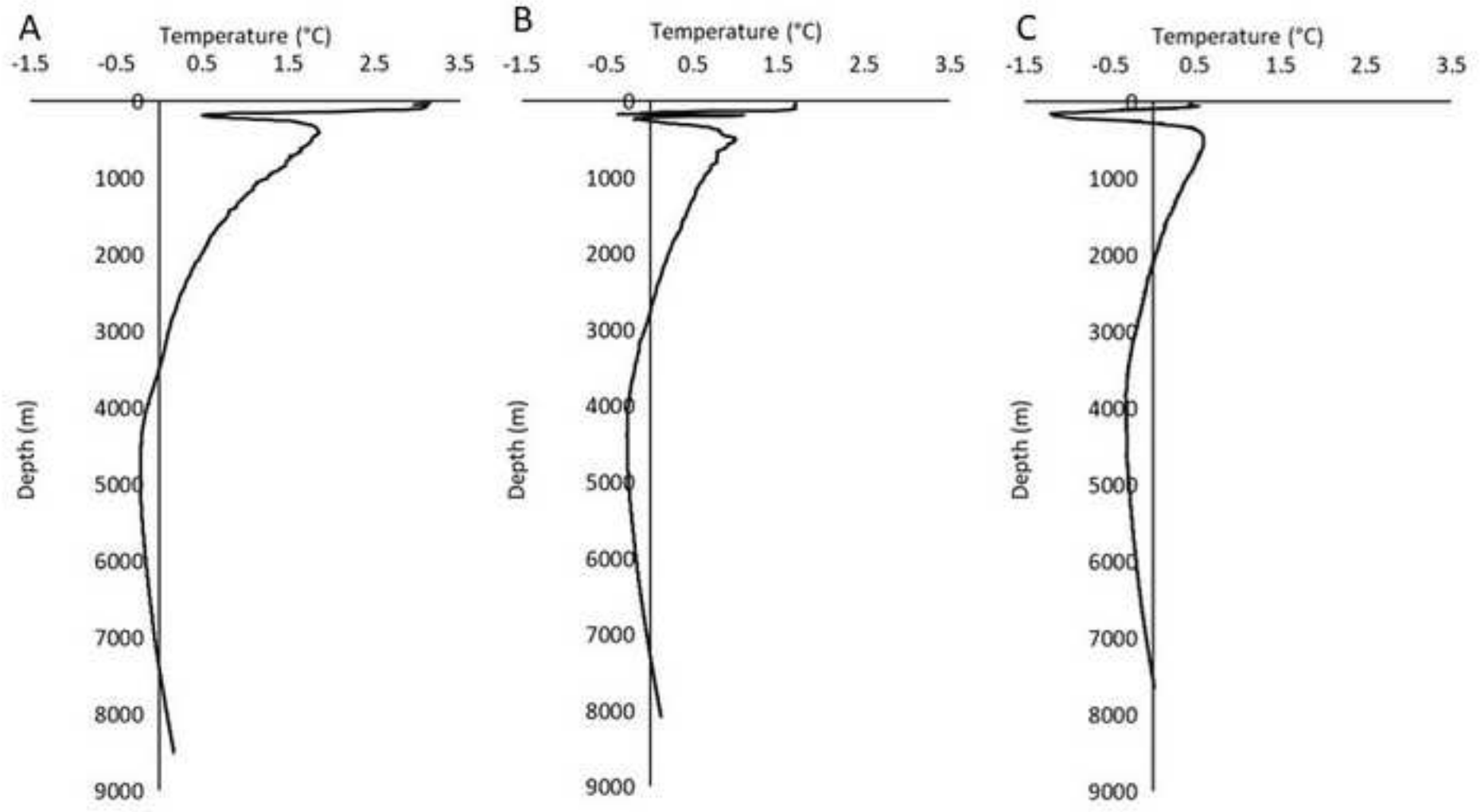












Supplemental Table S1: **All published records of hadal species from the South Sandwich Trench**, cross checked via World Register of Marine Species (WoRMS, 2021) and corrected where appropriate. Genus and species names in parentheses indicate the published record prior to correction following WoRMS (2021). ** indicates no known species in the WoRMS database.

Phylum	Class	Order	Family	Species	Min. Depth (m)	Max. Depth (m)	Authority	Record reference
Nematoda	Chromadorea	Araeolaimida	Diplopeltidae	Araeolaimus	6316	6319	de Man, 1880	Vanhove et al. 2004
				Diplopeltula	6316	6319	Gerlach, 1950	Vanhove et al. 2004
				Southerniella	6316	6319	Allgén, 1932	Vanhove et al. 2004
		Chromadorida	Chromadoridae	Acantholaimus	6316	6319	Allgén, 1933	Vanhove et al. 2004
				Cyatholaimidae	Paralongicyatholaimus	6316	6319	Schuurmans Stekhoven, 1950
			Desmodorida	Microlaimidae	Microlaimus	6316	6319	de Man, 1880
		Desmodoridae			Desmodora	6316	6319	de Man, 1889
		Pseudochromadora		6316	6319	Daday, 1899	Vanhove et al. 2004	
		Desmoscolecida	Desmoscoledidae	Tricoma	6316	6319	Cobb, 1894	Vanhove et al. 2004
		Monhysterida	Linhomoeidae	Linhomoeus (Paralinhomoeus)	6316	6319	Bastian, 1865	Vanhove et al. 2004
	Monhysteridae			Monhystera	6316	6319	Bastian, 1865	Vanhove et al. 2004
	Xyalidae		Diplolaimella	6316	6319	Allgén, 1929	Vanhove et al. 2004	
			Daptonema	6316	6319	Cobb, 1920	Vanhove et al. 2004	
			Manganonema	6316	6319	Bussau, 1993	Vanhove et al. 2004	
	Plectida		Camacolaimidae	Procamacolaimus	6316	6319	Gerlach, 1954	Vanhove et al. 2004
			Aegialoalaimidae	Aegialoalaimus	6316	6319	de Man, 1907	Vanhove et al. 2004
		Diplopeltoideidae	Diplopeltoides	6316	6319	Gerlach, 1962	Vanhove et al. 2004	
		Leptolaimidae	Leptolaimus	6316	6319	de Man, 1876	Vanhove et al. 2004	
	Enoplea	Enoplida	Oxystominidae	Thalasoalaimus	6316	6319	de Man, 1893	Vanhove et al. 2004

Porifera	Hexactinellida	Hexasterophora	Rossellidae	<i>Hyalascus (Hyalospongidae?)</i>	6766	7216	Ijima, 1896	Belyaev (1989)	
				"Hexactinellida"	7044	7044	Schmidt, 1870	This study	
Cnidaria	Anthozoa	Pennatularia	Kophobelemnonidae	<i>Kophobelemnon molanderi</i>	6052	6150	Pasternak, 1975	Belyaev (1989)	
			Umbellulidae	<i>Umbellula lindahli</i>	6052	6150	Kölliker, 1875	Belyaev (1989)	
		unknown	unknown	"Anemone"	6333	6333	Ehrenberg, 1834	Howe et al. 2004	
Annelida	Polychaeta	Eunicida	Lumbrineridae	<i>Abyssoninoe (Lumbrineris) abyssorum</i>	6052	6150	(McIntosh, 1885)	Belyaev (1989)	
			Phyllodocida	Aphroditidae	<i>Laetmonice benthaliana</i>	6766	6875	McIntosh, 1885	Belyaev (1989)
			Goniadidae	<i>Bathyglycinde longisetosa</i>	7218	7934	Levenstein, 1975	Belyaev (1989)	
			Phyllodocidae	<i>Sige (Eulalia) sandwichensis</i>	6052	7218	(Uschakov, 1975)	Belyaev (1989)	
			Polynoidae	<i>Bathymoorea aff. renotubulata</i>	6052	6150	(Moore, 1910)	Belyaev (1989)	
		<i>Macellicephala tricornis</i>		7200	8116	Levenstein, 1975	Belyaev (1989)		
		<i>Macellicephaloides sandvichensis</i>		7200	7934	Levenstein, 1975	Belyaev (1989)		
		Sigalionidae		<i>Leanira quatrefagesi</i>	6050	6150	Kinberg, 1856	Belyaev (1989)	
			Drilomorpha	Capitellidae	<i>Notomastus latericeus</i>	6875	7216	Sars, 1851	Belyaev (1989)
			Terebellida	Fauveliopsidae	<i>Laubieriopsis brevis</i>	6052	6150	(Hartman, 1967)	Belyaev (1989)
		Flabelligeridae		<i>Ilyphagus (brada) sp.</i>	6052	7934	Chamberlin, 1919	Belyaev (1989)	
			Maldanidae	<i>Notoproctus oculatus antarcticus</i>	6766	6875	Arwidsson, 1911	Belyaev (1989)	
			Opheliidae	<i>Travisia (Kesun abyssorum) glandulosa</i>	6052	8116	McIntosh, 1879	Belyaev (1989)	
			Cirratulidae	<i>Tharyx sp. -sp-</i>	7200	8116	Webster & Benedict, 1887	Belyaev (1989)	
			Cirratulidae	<i>Chaetozone biannulata</i>	743	6337	Blake 2018	Blake and Narayanaswamy 2004	
				Ampharetidae	<i>Amphicteis gunneri</i>	7686	7686	(M. Sars, 1835)	Belyaev (1989)
	Sabellida	Siboglinidae	<i>Spirobrachia leospira</i>	8004	8116	Gurjeeva, 1975	Belyaev (1989)		
	Spionida	Spionidae	Prionospio sp. 1	6316	6319	Malmgren, 1867	Blake and Narayanaswamy 2004		

			Travisiidae	Travisia (Kesun abyssorum) glandulosa	6316	6319	McIntosh, 1879	Blake and Narayanaswamy 2004
Echuirea	Echiuroidea	Bonelliida	Bonelliidae	<i>Jakobia birsteini</i>	7200	7216	Zenkevitch, 1958	Belyaev (1989)
Echinodermata	Crinoidea			"Crinoidea"	6333	6333	Miller, 1821	Howe et al. 2004
				"Stalked Crinoid"/ Bathycrinidae?	7099	7099	Bather, 1899	This study
	Echinoidea	Spatangoida	Pourtalesiidae	<i>Pourtalesia</i> aff. <i>Debilis</i>	6100	6650	Koehler, 1926	Belyaev (1989)
	Ophiuroidea	Ophiurae	Ophiomyxidae (Ophiodermatidae)	<i>Ophiurochaeta</i> sp.	6052	6150	Matsumoto, 1915	Belyaev (1989)
			Ophiopyrgidae (Ophiuridae)	<i>Amphiophiura</i> sp.	6052	6150	Matsumoto, 1915	Belyaev (1989)
			Ophiuridae	<i>Ophiuroglypha (Ophiura) irrorata polyacantha</i>	6052	6150	(Mortensen, 1933)	Belyaev (1989)
				<i>Ophioplinthus (Ophiurolepis)</i> sp.	6052	7216	Lyman, 1878	Belyaev (1989)
				"Ophiuroidea"	6333	6333	Gray, 1840	Howe et al. 2004
				"Ophiuroidea"	6044	6640	Gray, 1840	This study
	Asteroidea	Paxillosida	Porcellanasteridae	<i>Eremicaster vicinus</i>	6052	6150	Ludwig, 1907	Belyaev (1989)
				<i>Porcellanaster</i> sp.	6052	6150	Wyville Thomson, 1879	Belyaev (1989)
		Velatida	Pterasteridae	<i>Hymenaster</i> sp.	6052	6150	Wyville Thomson, 1873	Belyaev (1989)
	Holothuroidea	Apodida	Myriotrochidae	<i>Neolepidotrochus (Lepidotrochus) variodentatus</i>	6766	7934	(Belyaev & Mironov, 1978)	Belyaev (1989)
				<i>Prototrochus bipartitodentatus</i>	7694	8116	(Belyaev & Mironov, 1978)	Belyaev (1989)
				<i>Prototrochus</i> sp. (aff. <i>Longissimus</i> **)	6052	6150	Belyaev & Mironov, 1982	Belyaev (1989)
		Elasipodida	Elpidiidae	<i>Amperima velacula</i>	6052	6150	Agatep, 1967	Belyaev (1989)
				<i>Elpidia decapoda</i>	6052	6150	Belyaev, 1975	Belyaev (1989)
				<i>Elpidia lata</i>	8004	8116	Belyaev, 1975	Belyaev (1989)
				<i>Elpidia ninae</i>	6766	7634	Belyaev, 1975	Belyaev (1989)
				<i>Kolga hyalina</i>	6052	6150	Danielssen & Koren, 1879	Belyaev (1989)

				<i>Peniagone herouardi</i>	7694	7934	Gebruk, 1988	Belyaev (1989)
				<i>Peniagone incerta</i>	6052	6875	(Théel, 1882)	Belyaev (1989)
				"Elpididae"	7439	8266	Théel, 1882	This study
		unknown	Unknown	"Holothuroidea"	6333	6333	not listed	Howe et al. 2004
Mollusca	Scaphopoda	Galilida	Entalinidae	<i>Entalinidae</i> sp.	6052	6150	Chistikov, 1979	Belyaev (1989)
	Gastropoda	Toxoglossa	Turridae	<i>"Gastropoda prosobranchia"</i>	6052	8116	H. Adams & A. Adams, 1853 (1838)	Belyaev (1989)
		Tectibranchiata	Scaphandridae	<i>Tectibranchiata</i> sp.	7206	7934	G.O. Sars, 1878	Belyaev (1989)
		Neogastropoda		"Neogastropoda"	6640	6640	Wenz, 1938	This study
	Bivalvia	Nuculida	Nuculanidae (Ledellidae)	<i>Parayoldiella (Parayoldiella)</i> sp.	8004	8116	Filatova, 1971	Belyaev (1989)
			Nuculanidae	<i>Yoldia (Yoldiella)</i> sp. sp.	6875	6875	A. E. Verrill & Bush, 1897	Belyaev (1989)
			Malletiidae	<i>Malletia</i> sp. n.	7200	7934	Desmoulins, 1832	Belyaev (1989)
			Lyonsiellidae	<i>Policordia</i> sp. 1	7200	7216	Dall, Bartsch & Rehder, 1938	Belyaev (1989)
			Neilonellidae	<i>Pseudoneilonella (Tindaria)</i> cf. <i>virens</i>	6464	6464	(Dall, 1890)	Linse 2004
			Yoldiidae	<i>Yoldiella</i> sp. 1	6464	6464	A. E. Verrill & Bush, 1897	Linse 2004
			Yoldiidae	<i>Yoldiella</i> sp. 2	6464	6464	A. E. Verrill & Bush, 1897	Linse 2004
		Mytilida (Lucinida)	Mytilidae	<i>Dacrydium</i> sp.	6050	6150	Torell, 1859	Belyaev (1989)
		Verticordiidae	Verticordiidae	<i>Laevicordia</i> sp.	6050	6150	Seguenza, 1876	Belyaev (1989)
		Arcidae	Limopsidae	<i>Limopsis</i> sp. n. 1	6464	6464	Sasso, 1827	Linse 2004
		Pectinida	Propeamussiidae	<i>Cyclopecten</i> sp. 2	6464	6464	A. E. Verrill, 1897	Linse 2004
		Venerida	Vesicomyninae	<i>Vesicomya (Kelliella) sirenkoi</i>	6464	6464	(Egorova, 1998)	Linse 2004
			Cuspidariidae	<i>Cuspidaria</i> cf. <i>tenella</i>	6464	6464	E. A. Smith, 1907	Linse 2004
				unidentified heterodont	6464	6464	Neumayr, 1884	Linse 2004
Sipuncula	Sipunculidea	Golfingiida	Golfingiidae	<i>Nephasoma (Golfingia) minuta</i>	6052	6150	(Keferstein, 1862)	Belyaev (1989)

				<i>Nephasoma (Nephasoma) diaphanes diaphanes</i>	6052	6150	(Gerould, 1913)	Belyaev (1989)	
			(Phascolionidae)	<i>Phascolion (montuga) lutense</i>	6052	6150	Selenka, 1885	Belyaev (1989)	
Arthropoda	Malacostraca	Mysida	Mysidae	<i>Amblyops</i> sp. n. 2	7200	7216	G.O. Sars, 1872	Belyaev (1989)	
		Mysida		<i>Neobirsteiniamysis (Birsteiniamysis)</i> sp. n.	7200	7216	Hendrickx & Tchindonova, 2020	Belyaev (1989)	
		Cumacea	Nannastacidae	Cumacea sp. sp.	6766	7216	Bate, 1866	Belyaev (1989)	
		Tanaidacea	Akanthophoreidae (Leptognathiidae)	<i>Chaulioleona (Leptognathia) armata</i>	6052	6150	(Hansen, 1913)	Belyaev (1989)	
				<i>Chaulioleona (Leptognathia) gracilis</i>	6052	7218	(Krøyer, 1842)	Belyaev (1989)	
			Leptognathiidae	<i>Leptognathia (paraforcifera**)</i>	6052	6150	Sars, 1882	Belyaev (1989)	
			Neotanaididae	<i>Neotanais kurchatovi</i>	7200	7934	Kudinova-Pasternak, 1975	Belyaev (1989)	
		Isopoda	Acanthaspidiidae	<i>Iolanthe (Acanthaspidia) curtispinosa</i>	6766	7216	(Vasina & Kussakin, 1982)	Belyaev (1989)	
			Arcturidae	<i>Arcturus</i> sp.	7200	7216	Latreille, 1829	Belyaev (1989)	
			Desmosomatidae	Multiple species	6348	6348	G. O. Sars, 1897	Brandt et al. 2004	
			Haploniscidae	Multiple species	6348	6348	Hansen, 1916	Brandt et al. 2004	
		Amphipoda	Eurytheneidae	<i>Eurythenes</i> sp.	6044	7099	S. I. Smith in Scudder, 1882	This study	
			Scopelocheidae	<i>Bathycallisoma schellenbergi</i>	6640	8265	(Birstein & Vinogradov, 1958)	This study	
			Hirondelleidae	<i>Hirondellea dubia</i>	6640	8265	Dahl, 1959	This study	
				<i>Hirondellea</i> sp.	7400	7432	Chevreaux, 1889	This study	
		Decapoda	unknown	"shrimp"	6333	6333	Latreille, 1802	Howe et al. 2004	
		Pycnogonida	Pantopoda	Austrodecidae	<i>Pantopipetta longituberculata</i>	6052	6150	(Turpaeva, 1955)	Belyaev (1989)
Hemichordata	Enteropneusta	Enteropneusta	Torquaratoridae?	<i>Enteropneusta</i> sp.	8004	8116	Holland et al. 2005	Belyaev (1989)	
Chordata	Actinopteri	Gadiformes	Macrouridae	Macrourid sp. <i>stet.</i> 1-SAND (<i>Coryphaenoides?</i>)	6640	6640	Gunnerus, 1765	This study	
		Perciformes	Liparidae	Liparid sp. <i>indet.</i> 2-SAND	6044	6044	Gill, 1861	This study	

<i>Paraliparis</i> sp. 1-SAND	6044	6640	Colett, 1879	This study
<i>Liparid</i> sp. <i>indet.</i> 3-SAND	6640	6640	Gill, 1861	This study

Conflict of Interest

The authors declare no conflicts of interest

Dear Editor,

We hereby submit the revised manuscript entitled "Hadal fauna of the South Sandwich Trench, Southern Ocean: Baited camera survey from the Five Deeps Expedition" for publication in Deep-Sea Research Part II as part of the South Sandwich special issue headed by Martin Collins at BAS. Many thanks to the editor and the two reviewers for their helpful comments.

While most of the comments and corrections were minor and easy to deal with, Reviewer number 2's comments were harder. Their comment on the surface productivity, I think, has greatly improved the intro to the area. However, the second comment regarding TMAO and the drivers of depth in fishes is a lot harder and well beyond the scope of this paper. I have written a justification for not going down this route in the responses document.

Also, reviewer 1 asked for greater comparison with Russian data (and others we presume). This is very hard as the available data is split between a lot of cores at the shallow end, a lot of trawls at the deep end and our camera survey through the middle therefore it is not very helpful or meaningful to try and compare any of these, instead we decided to include a supplementary table listing every known species from STT in the literature in the hope that this will serve as a useful resource to those visiting the area in the future. This list has been extensively cross checked with the WoRMS data base.

I hope this is all to your satisfaction.

Regards

Alan Jamieson on behalf of co-authors.