



PLANTS RECENTLY LISTED UNDER THE CALIFORNIA ENDANGERED SPECIES ACT (CESA)

**LIGHTNING TALK FOR THE NORTHERN
CALIFORNIA BOTANISTS SYMPOSIUM**

January 8, 2024

Kristi Lazar

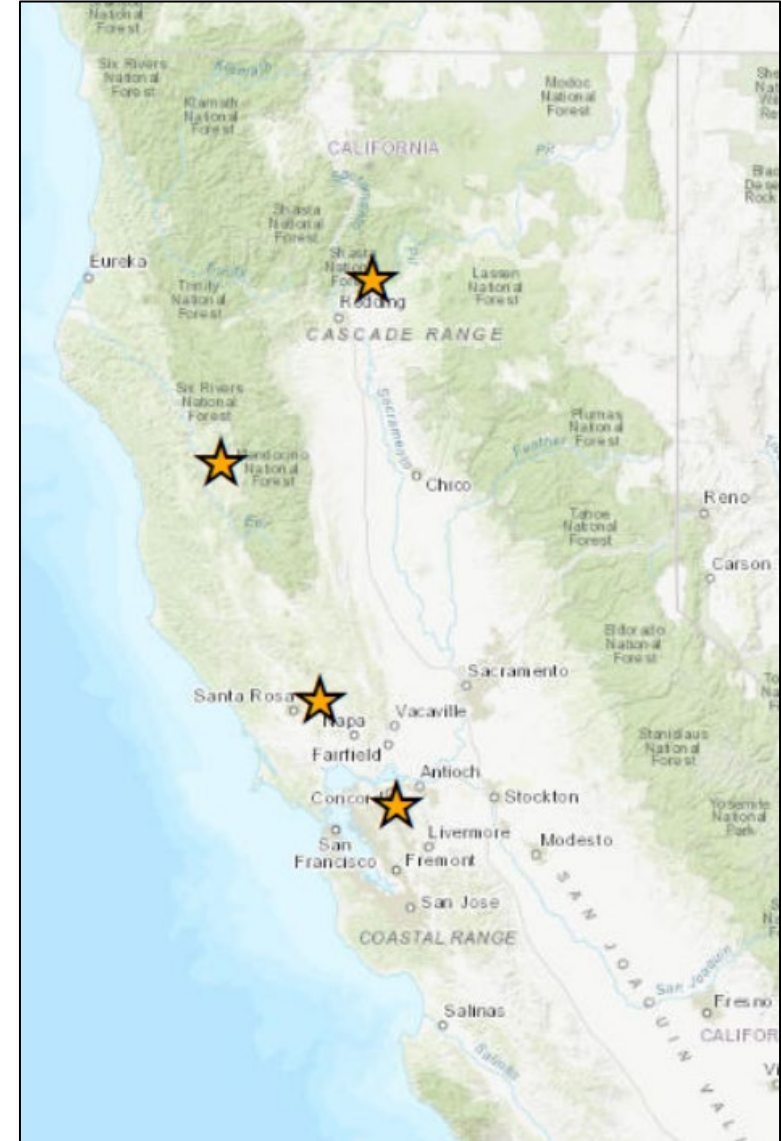
CDFW's Native Plant Program



Photo Credit: Steve Matson

CESA Plant Listings

- Petition → California Fish and Game Commission → CDFW's Native Plant Program
- The Native Plant Program evaluates petitions, conducts status reviews, and makes recommendations to the Commission.
- From 2019 through 2022, several species were listed under CESA or had their CESA listing status changed.

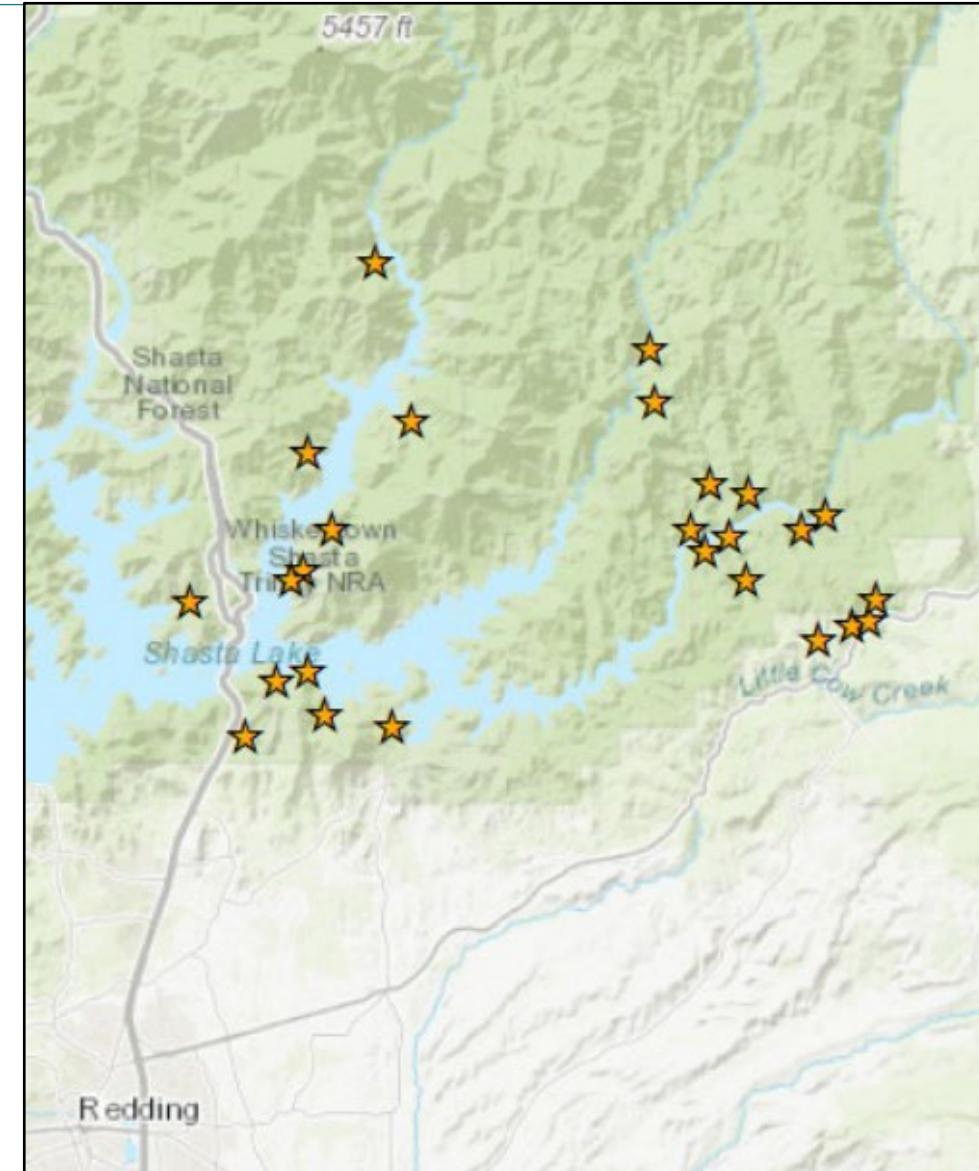


2019 CESA Listing Petition

- Shasta snow-wreath (*Neviusia cliftonii*)
 - 26 occurrences near Shasta Lake
 - Threats: Shasta Dam, invasive species, limited ability to reproduce
 - Listed as a Threatened Species



Photo Credit: Steve Matson

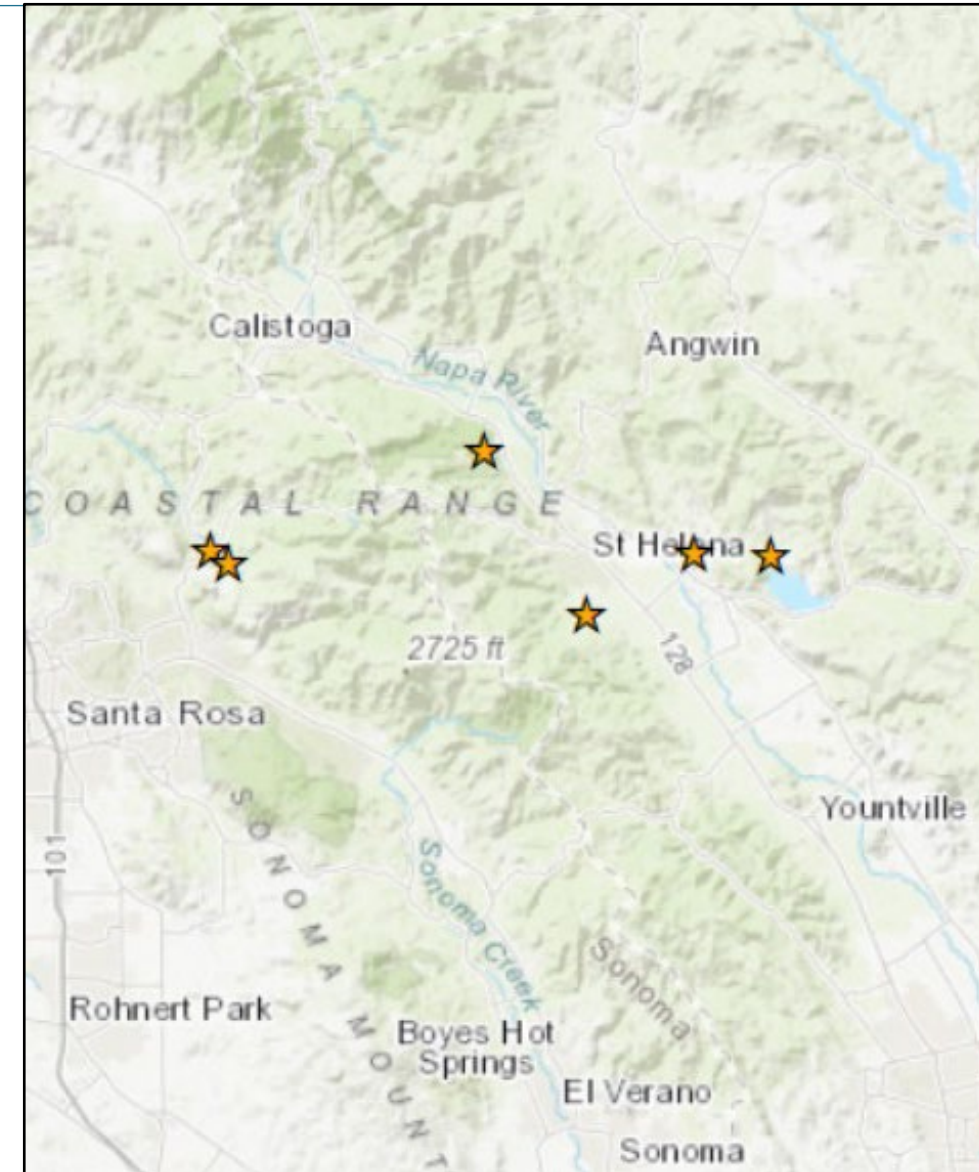


2020 CESA Listing Petition

- Clara Hunt's milkvetch (*Astragalus claranus*)
 - Native Plant Program 5-year species review
 - 6 occurrences in Napa and Sonoma Counties
 - Continued population declines
 - Uplisted from Threatened to Endangered



Photo Credit: Jake Ruygt

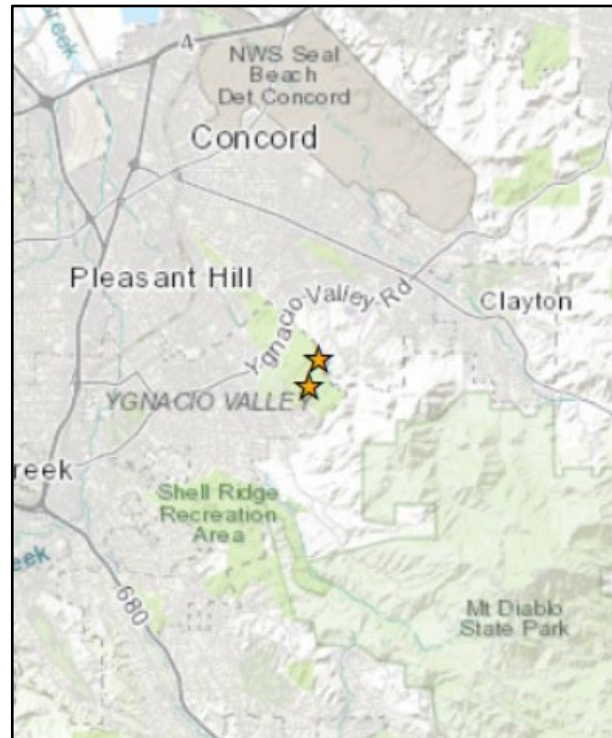


2021 CESA Listing Petitions

- Lime Ridge eriastrum (*Eriastrum ertterae*)
 - 2 occurrences at Lime Ridge Open Space in Contra Costa County
 - Biggest threat from recreational use
 - Listed as Endangered



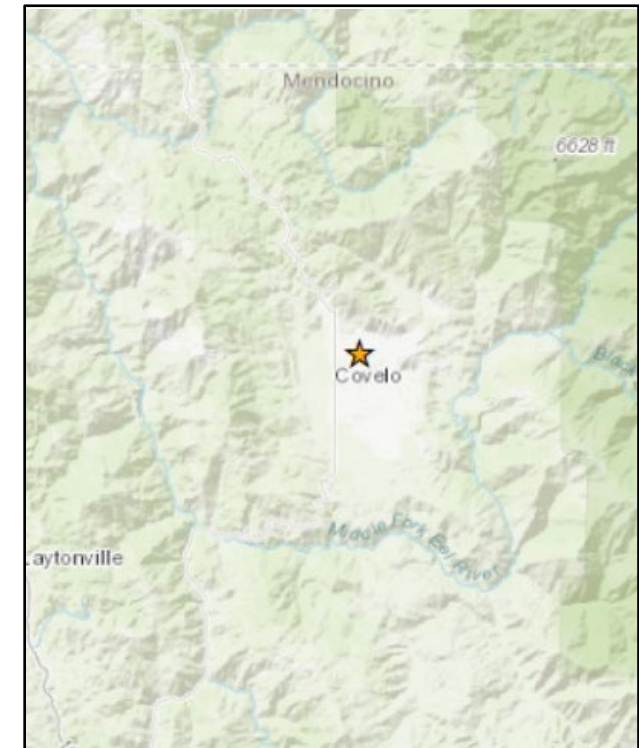
Photo Credit: John Doyen



- Milo Baker's lupine (*Lupinus milo-bakeri*)
 - Native Plant Program 5-year species review
 - One extant roadside occurrence in Covelo in Mendocino County
 - Severe population declines
 - Uplisted from Threatened to Endangered



Photo Credit: Dana York



Other CESA Listing Petitions (Southern CA)

- Western Joshua tree (*Yucca brevifolia*) in 2019
 - Currently a Candidate Species
- Inyo rock daisy (*Laphamia inyoensis*) in 2022
 - Listed as Threatened
- Consider submitting your own CESA listing petition to the California Fish and Game Commission!



Photo Credit: Neal Kramer



Photo Credit: Cheryl Birker



Contact

Kristi Lazar

CESA Listing Specialist

Native Plant Program

CDFW's Habitat Conservation
and Planning Branch

Kristi.Lazar@wildlife.ca.gov

