

APPENDIX F
STRUM WATERCOURSE TABLE, WATERCOURSE PHOTO LOG,
AND FISH PHOTO LOG

Watercourse ID	Watercourse Type	Watercourse Measurements (m)	Bankful Depth (m)	Substrate (%)	Habitat Characteristic	Direction of Flow	Velocity (m/s)	Water Quality	In Stream Cover*	Undercut Measurements (m)	Bank Characteristics	Bank Notes	Fish Presence	Evidence of Alteration	Other Observations
WC2	Small permanent	Channel Width = 4.20 Wetted Width = 1.85 Right Bank Depth = 0.12 Center Depth = 0.15 Left Bank Depth = 0.08 Thalweg = 0.21	0.8	Bedrock = 0 Boulder (>25 cm) = 30 Cobble (3-25 cm) = 35 Gravel (2 mm-3 cm) = 20 Sand (0.06-2 mm) = 15 Fines (<0.06 mm) = 0	Run	North	0.2	pH = 7.2 Temperature (°C) = 15.6 Dissolved Oxygen (mg/L) = 8.44 Dissolved Oxygen (%) = 84.7 Conductivity (mS/cm) = 0.03	Boulders = A Overhanging Vegetation = M Canopy Cover = M Instream Vegetation = T Large Woody Debris = M Small Woody Debris = M Deep Pools = N	Left Bank = 0 Right Bank = 0	High stability; No undercut	Boulders, cobbles, gravel, deadwood	None observed; Habitat Suitability is moderate	None observed.	Steady flow. Clear, clean water. Good canopy cover.
WC4	Small permanent	Channel Width = 0.90 Wetted Width = 0.67 Right Bank Depth = 0.11 Center Depth = 0.23 Left Bank Depth = 0.17 Thalweg = 0.23	0.35	Bedrock = 0 Boulder (>25 cm) = 20 Cobble (3-25 cm) = 30 Gravel (2 mm-3 cm) = 30 Sand (0.06-2 mm) = 10 Fines (<0.06 mm) = 10	Riffle	East	N/A	Not recorded	Boulders = M Overhanging Vegetation = M Canopy Cover = A Instream Vegetation = T Large Woody Debris = M Small Woody Debris = M Deep Pools = N	Left Bank = 0 Right Bank = 0	Moderate stability; Active erosion; No undercut	Mixedwood forest, rocks, leaf litter	None observed; Habitat Suitability is low	None observed.	Braided stream fed by groundwater spring flowing down slope; intermittently subterranean; lacks clear channel in areas. Substrate covered in layer of fine muck near beginning and transitions to more sand and gravel as it courses down slope.
WC5	Small permanent	Channel Width = 0.52 Wetted Width = 0.30 Right Bank Depth = 0.03 Center Depth = 0.07 Left Bank Depth = 0.06 Thalweg = 0.07	0.29	Bedrock = 0 Boulder (>25 cm) = 10 Cobble (3-25 cm) = 20 Gravel (2 mm-3 cm) = 20 Sand (0.06-2 mm) = 20 Fines (<0.06 mm) = 50	Riffle	Southeast	N/A	Not recorded	Boulders = T Overhanging Vegetation = M Canopy Cover = M Instream Vegetation = M Large Woody Debris = M Small Woody Debris = M Deep Pools = N	Left Bank = 0 Right Bank = 0	Low stability; Active erosion; No undercut	Moss and tree roots, occasional boulders, herbaceous cover	None observed; Habitat Suitability is low	None observed.	Small groundwater-fed spring flowing out side of mountain; Intermittently subterranean, flowing through boulders and tree roots; Flow picks up and channel widens as it exits the downhill boundary; Mossy, vegetated covered and mucky substrate.
WC6	Small permanent	Channel Width = 0.86 Wetted Width = 0.82 Right Bank Depth = 0.04 Center Depth = 0.06 Left Bank Depth = 0.05 Thalweg = 0.07	0.07	Bedrock = 0 Boulder (>25 cm) = 40 Cobble (3-25 cm) = 20 Gravel (2 mm-3 cm) = 20 Sand (0.06-2 mm) = 10 Fines (<0.06 mm) = 10	Riffle, Other	East	N/A	Not recorded	Boulders = A Overhanging Vegetation = M Canopy Cover = M Instream Vegetation = M Large Woody Debris = A Small Woody Debris = A Deep Pools = N	Left Bank = 0 Right Bank = 0	Low stability; Active erosion; No undercut	Cobbles, boulders, leaf litter, sticks, logs	None observed; Habitat Suitability is low	None observed.	Watercourse appears from underground, is spring-fed, and cascading downward over rocky substrate; Intermittently above and below ground with braided characteristics; Relatively uniform characteristics as it flows downhill, eventually discharging into a larger watercourse; Moss-covered cobble and boulders dominate substrate, some sediment deposited in low-velocity catches.
WC7	Small permanent	Channel Width = 1.24 Wetted Width = 0.88 Right Bank Depth = 0.01 Center Depth = 0.01 Left Bank Depth = 0.04 Thalweg = 0.04	0.5	Bedrock = 0 Boulder (>25 cm) = 30 Cobble (3-25 cm) = 30 Gravel (2 mm-3 cm) = 30 Sand (0.06-2 mm) = 5 Fines (<0.06 mm) = 5	Riffle, Pool, Other	Northeast	9.27	Not recorded	Boulders = M Overhanging Vegetation = M Canopy Cover = A Instream Vegetation = T Large Woody Debris = T Small Woody Debris = A Deep Pools = N	Left Bank = 0 Right Bank = 0	Moderate stability; Active erosion; No undercut	Ferns, hardwood shrubs, leaf litter, rock	None observed; Habitat Suitability is moderate	Yes, culvert present.	Watercourse flows under dirt road, rough conditions suggest ATV trail. No fish observed, but gravel substrate and small pools suggest decent habitat for smaller fish; Water overtake banks in areas during high flow; Substrate is quite rocky with lots of moss.
WC8	Large permanent	Channel Width = 4.50 Wetted Width = 3.70 Right Bank Depth = 0.21 Center Depth = 0.27 Left Bank Depth = 0.07 Thalweg = 0.30	0.5	Bedrock = 0 Boulder (>25 cm) = 5 Cobble (3-25 cm) = 30 Gravel (2 mm-3 cm) = 20 Sand (0.06-2 mm) = 40 Fines (<0.06 mm) = 10	Pool, Riffle, Run, Flat	North	1.75	Not recorded	Boulders = M Overhanging Vegetation = M Canopy Cover = M Instream Vegetation = T Large Woody Debris = T Small Woody Debris = M Deep Pools = N	Left Bank = N/A Right Bank = 0.32	Right bank moderately stable; Left bank unstable; Right bank undercut	Graminoids, tree roots, ferns	None observed; Habitat Suitability is moderate	Yes, open-bottom bridge present.	Watercourse flows through ravine with plenty of blowdown; Hardwood dominant forest along edges, primarily sugar maple; Substrate has little muck and moss.
WC9	Small permanent	Channel Width = 0.95 Wetted Width = 0.95 Right Bank Depth = 0.09 Center Depth = 0.08 Left Bank Depth = 0.10 Thalweg = 0.12	0.05	Bedrock = 0 Boulder (>25 cm) = 0 Cobble (3-25 cm) = 30 Gravel (2 mm-3 cm) = 0 Sand (0.06-2 mm) = 60 Fines (<0.06 mm) = 10	Riffle, Run, Pool	Northwest	0.03	Not recorded	Boulders = M Overhanging Vegetation = M Canopy Cover = A Instream Vegetation = T Large Woody Debris = N Small Woody Debris = T Deep Pools = N	Left Bank = 0 Right Bank = 0	High stability; No undercut	Sphagnum and herb cover, Mature softwood and hardwood trees nearby	None observed; Habitat Suitability is low	None observed.	Sandy substrate with occasional cobble.
WC11	Intermittent	Channel Width = 0.54 Wetted Width = 0.54 Right Bank Depth = 0.06 Center Depth = 0.05 Left Bank Depth = 0.03 Thalweg = 0.08	0.02	Bedrock = 0 Boulder (>25 cm) = 5 Cobble (3-25 cm) = 30 Gravel (2 mm-3 cm) = 40 Sand (0.06-2 mm) = 10 Fines (<0.06 mm) = 15	Riffle, Run, Pool	Southeast	N/A	Not recorded	Boulders = N Overhanging Vegetation = A Canopy Cover = A Instream Vegetation = N Large Woody Debris = A Small Woody Debris = A Deep Pools = N	Left Bank = 0 Right Bank = 0	High stability; Active erosion; No undercut	Leaf litter, sphagnum, mixedwood regeneration	None observed; Habitat Suitability is low	None observed.	Watercourse originates in large bog outside of assessment area (visible from imagery); Starts as ephemeral channel and becomes more defined after ~50 m; Watercourse continues to the southeast; Exposed sediment along left bank has the potential to enter the channel during high flow events; Abundance of moss-covered rocks, leaf litter, and woody debris within channel.
WC18A	Large permanent	Channel Width = 6.00 Wetted Width = 6.00 Right Bank Depth = 0.53 Center Depth = 0.76 Left Bank Depth = 0.57 Thalweg = 0.78	0.92	Bedrock = 0 Boulder (>25 cm) = 30 Cobble (3-25 cm) = 50 Gravel (2 mm-3 cm) = 0 Sand (0.06-2 mm) = 0 Fines (<0.06 mm) = 20	Flat	West	0.08	Not recorded	Boulders = M Overhanging Vegetation = N Canopy Cover = N Instream Vegetation = N Large Woody Debris = N Small Woody Debris = T Deep Pools = A	Left Bank = 0 Right Bank = 0.42	High stability; Right bank undercut	Bridge cribbing, rocks, moss, herbaceous plants	None observed; Habitat Suitability is moderate	Yes, bridge present	Watercourse runs parallel to road for about 50 m, crossing under open bottom bridge, then follows along road for another 100 m; Substrate covered in thin layer of sediment.
WC18B	Intermittent	Channel Width = 1.56 Wetted Width = 1.5 Right Bank Depth = 0.12 Center Depth = 0.15 Left Bank Depth = 0.21 Thalweg = 0.24	0.28	Bedrock = 0 Boulder (>25 cm) = 0 Cobble (3-25 cm) = 0 Gravel (2 mm-3 cm) = 0 Sand (0.06-2 mm) = 0 Fines (<0.06 mm) = 100	Flat	West	0.05	Not recorded	Boulders = N Overhanging Vegetation = M Canopy Cover = M Instream Vegetation = T Large Woody Debris = N Small Woody Debris = T Deep Pools = N	Left Bank = 0.12 Right Bank = 0	High stability, no active erosion	Moss, herbaceous plants, shrubs	None observed; Habitat Suitability is moderate	Yes, culvert present.	Slow moving water has allowed for sediments to settle, muck is quite deep. This watercourse eventually discharges into WC18A.
WC19	Small permanent	Channel Width = 3.40 Wetted Width = 3.18 Right Bank Depth = 0.04 Center Depth = 0.20 Left Bank Depth = 0.15 Thalweg = 0.24	0.22	Bedrock = 15 Boulder (>25 cm) = 15 Cobble (3-25 cm) = 55 Gravel (2 mm-3 cm) = 10 Sand (0.06-2 mm) = 5 Fines (<0.06 mm) = 0	Run	East	0.2336	pH = 6.21 Temperature (°C) = 19.9 Dissolved Oxygen (mg/L) = Not recorded Dissolved Oxygen (%) = Not recorded Conductivity (mS/cm) = 0.03	Boulders = T Overhanging Vegetation = T Canopy Cover = M Instream Vegetation = T Large Woody Debris = N Small Woody Debris = T Deep Pools = N	Left Bank = 0.13 Right Bank = 0	High stability; Left bank undercut	Altered slope from bridge building; Abundant sedge and grass cover; Asters and cinnamon fern growing up through cobble/boulder rip rap	None observed; Habitat Suitability is moderate	Yes, open-bottom bridge present.	Deep ravine, lots of blowdown; Hard to access for electrofishing; Polyline includes a secondary channel that became inaccessible due to unsafe levels of blowdown; Substrate may have been altered from bridge installation.
WC20	Small permanent	Channel Width = 3.02 Wetted Width = 2.62 Right Bank Depth = 0.09 Center Depth = 0.11 Left Bank Depth = 0.07 Thalweg = 0.29	0.53	Bedrock = 0 Boulder (>25 cm) = 0 Cobble (3-25 cm) = 20 Gravel (2 mm-3 cm) = 40 Sand (0.06-2 mm) = 20 Fines (<0.06 mm) = 20	Flat, Run	Northwest	0.031	Not recorded	Boulders = N Overhanging Vegetation = T Canopy Cover = M Instream Vegetation = N Large Woody Debris = M Small Woody Debris = A Deep Pools = N	Left Bank = 0.61 Right Bank = 0.10	High stability; Both banks undercut	Tree roots, shrubs, herbaceous plants, small trees, moss	None observed; Habitat Suitability is moderate	None observed.	Water is quite shallow, underlain by deep muck.
WC21	Small permanent	Channel Width = 3.15 Wetted Width = 2.85 Right Bank Depth = 0.08 Center Depth = 0.05 Left Bank Depth = 0.07 Thalweg = 0.17	0.37	Bedrock = 0 Boulder (>25 cm) = 10 Cobble (3-25 cm) = 30 Gravel (2 mm-3 cm) = 30 Sand (0.06-2 mm) = 20 Fines (<0.06 mm) = 0	Run, Riffle	West	0.17	Not recorded	Boulders = T Overhanging Vegetation = M Canopy Cover = M Instream Vegetation = T Large Woody Debris = N Small Woody Debris = T Deep Pools = N	Left Bank = 0.23 Right Bank = 0	High stability; Left bank undercut	Herbaceous plants, shrubs, moss, rocks	None observed; Habitat Suitability is moderate	Yes, culvert present.	Water flows under roadway at crossing via two metal culverts (860 mm diameter); One of the culverts has collapsed, but plenty of water still flowing through; Roadside drainage flowing parallel to road from both north and south and confluent at the crossing; Channel becomes more defined with higher flow as it courses west, outside of the boundary; Clear, clean substrate.
WC22	Large permanent	Channel Width = 6.50 Wetted Width = 4.50 Right Bank Depth = 0.22 Center Depth = 0.22 Left Bank Depth = 0.22 Thalweg =	0.05	Bedrock = 5 Boulder (>25 cm) = 50 Cobble (3-25 cm) = 40 Gravel (2 mm-3 cm) = 5 Sand (0.06-2 mm) = 0 Fines (<0.06 mm) = 0	Pool, Riffle, Run	Southeast	0.34	pH = 6.74 Temperature (°C) = 13.1 Dissolved Oxygen (mg/L) = 9.43 Dissolved Oxygen (%) = 89.1 Conductivity (mS/cm) = 0.03	Boulders = A Overhanging Vegetation = T Canopy Cover = T Instream Vegetation = T Large Woody Debris = A Small Woody Debris = A Deep Pools = N	Left Bank = 0 Right Bank = 0	High stability; No undercut	Cobble, gravel, fines, boulders	None observed; Habitat Suitability is high	None observed.	Very steep gorge into watercourse with rocky substrate; Regenerating softwoods and blowdown of large trees along banks.

Watercourse ID	Watercourse Type	Watercourse Measurements (m)	Bankfull Depth (m)	Substrate (%)	Habitat Characteristic	Direction of Flow	Velocity (m/s)	Water Quality	In Stream Cover*	Undercut Measurements (m)	Bank Characteristics	Bank Notes	Fish Presence	Evidence of Alteration	Other Observations
WC23	Small permanent	Channel Width = 1.17 Wetted Width = 1.45 Right Bank Depth = 0.21 Center Depth = 0.19 Left Bank Depth = 0.16 Thalweg = 0.23	0.01	Bedrock = 0 Boulder (>25 cm) = 0 Cobble (3-25 cm) = 30 Gravel (2 mm-3 cm) = 40 Sand (0.06-2 mm) = 20 Fines (<0.06 mm) = 10	Pool, Riffle, Run	East	0.39	Not recorded	Boulders = N Overhanging Vegetation = M Canopy Cover = T Instream Vegetation = T Large Woody Debris = A Small Woody Debris = A Deep Pools = N	Left Bank = 0 Right Bank = 0	Right bank stable; Left bank moderately stable; Active erosion; No undercut	Sphagnum, herbaceous vegetation, young mixedwood trees, abundant blowdown	None observed; Habitat Suitability is moderate	Yes, culvert present.	Stream overtopping banks in many locations due to heavy rainfall today/overnight and is transporting exposed sediment; Very high levels of blowdown throughout length of watercourse making it difficult to access in some areas - tracked as closely as possible; Watercourse starts as ephemeral drainage before turning to small permanent.
WC24	Small permanent	Channel Width = 0.30 Wetted Width = 0.42 Right Bank Depth = 0.08 Center Depth = 0.14 Left Bank Depth = 0.13 Thalweg = 0.17	0	Bedrock = 0 Boulder (>25 cm) = 0 Cobble (3-25 cm) = 0 Gravel (2 mm-3 cm) = 0 Sand (0.06-2 mm) = 10 Fines (<0.06 mm) = 90	Riffle	North	0.08	Not recorded	Boulders = N Overhanging Vegetation = A Canopy Cover = T Instream Vegetation = A Large Woody Debris = T Small Woody Debris = M Deep Pools = N	Left Bank = 0 Right Bank = 0	High stability; No undercut	Sphagnum moss, sedges, bunchberry, sarsaparilla, ferns	None observed; Habitat Suitability is low	Yes, culvert present.	Drainage from wetland that connects to another watercourse.
WC25	Intermittent	Channel Width = 1.94 Wetted Width = 1.64 Right Bank Depth = 0.14 Center Depth = 0.24 Left Bank Depth = 0.18 Thalweg = 0.28	0.23	Bedrock = 0 Boulder (>25 cm) = 0 Cobble (3-25 cm) = 30 Gravel (2 mm-3 cm) = 50 Sand (0.06-2 mm) = 10 Fines (<0.06 mm) = 10	Riffle, Flat	West	0.09	Not recorded	Boulders = N Overhanging Vegetation = A Canopy Cover = M Instream Vegetation = N Large Woody Debris = N Small Woody Debris = T Deep Pools = N	Left Bank = 0 Right Bank = 0	Right bank unstable; Left bank moderately stable; Active erosion	Alders, herbaceous plants, muck	None observed; Habitat Suitability is moderate	Yes, culvert present.	Roughly 500 mm diameter plastic culvert runs under roadway at crossing; Watercourse begins as subterranean flow upstream, channels, and then becomes subterranean again downstream, eventually dissipating into wetland; Flow has been artificially straightened to run parallel with the road; Inflow from roadside drainage entering watercourse at crossing.
WC26	Intermittent	Channel Width = 1.47 Wetted Width = 1.40 Right Bank Depth = 0.04 Center Depth = 0.13 Left Bank Depth = 0.10 Thalweg = 0.28	0.34	Bedrock = 0 Boulder (>25 cm) = 0 Cobble (3-25 cm) = 0 Gravel (2 mm-3 cm) = 15 Sand (0.06-2 mm) = 0 Fines (<0.06 mm) = 85	Riffle, Run, Pool	Northeast	N/A	pH = 4.55 Temperature (°C) = 15.7 Dissolved Oxygen (mg/L) = 5.16 Dissolved Oxygen (%) = 51.2 Conductivity (mS/cm) = 0.03	Boulders = N Overhanging Vegetation = A Canopy Cover = T Instream Vegetation = A Large Woody Debris = T Small Woody Debris = T Deep Pools = N	Left Bank = 0 Right Bank = 0	Right bank moderately stable; Left bank unstable; No undercut	Fines, muck	None observed; Habitat Suitability is low	None observed.	Steady flow, though intermittently subterranean. Plenty of shade and small woody debris.
WC28	Large permanent	Channel Width = 7.20 Wetted Width = 6.60 Right Bank Depth = 0.06 Center Depth = 0.28 Left Bank Depth = 0.035 Thalweg = 0.36	0.25	Bedrock = 40 Boulder (>25 cm) = 13 Cobble (3-25 cm) = 25 Gravel (2 mm-3 cm) = 20 Sand (0.06-2 mm) = 2 Fines (<0.06 mm) = 0	Run, Riffle	South	0.362	Not recorded	Boulders = M Overhanging Vegetation = N Canopy Cover = T Instream Vegetation = N Large Woody Debris = N Small Woody Debris = N Deep Pools = M	Left Bank = 0 Right Bank = 0	High stability; Active erosion; No undercut	Silty sand with alders and graminoids growing, and interspersed boulders	None observed; Habitat Suitability is moderate	Yes, open-bottom bridge present.	Relatively straight with a slight meander; Wetland off right bank; Trace amounts of eroding shoreline; Substrate is comprised of lots of bedrock, boulders, cobble, finer gravel, and sand pockets near shoreline.
WC29	Intermittent	Channel Width = 2.00 Wetted Width = 1.10 Right Bank Depth = 0.07 Center Depth = 0.13 Left Bank Depth = 0.11 Thalweg = 0.19	0.23	Bedrock = 0 Boulder (>25 cm) = 10 Cobble (3-25 cm) = 5 Gravel (2 mm-3 cm) = 0 Sand (0.06-2 mm) = 0 Fines (<0.06 mm) = 85	Run, Flat	East	0.067	pH = 6.28 Temperature (°C) = 15.7 Dissolved Oxygen (mg/L) = 6.61 Dissolved Oxygen (%) = 70.3 Conductivity (mS/cm) = 0.03	Boulders = M Overhanging Vegetation = M Canopy Cover = M Instream Vegetation = M Large Woody Debris = M Small Woody Debris = A Deep Pools = N	Left Bank = 0 Right Bank = 0	Right bank unstable; Left bank moderately stable; No undercut	Muck, boulders, herbaceous roots, wood	None observed; Habitat Suitability is low	Yes, culvert present.	Some blowdown along watercourse; Rolling topography; Watercourse becomes intermittently subterranean near eastern extent of boundary; Passes through some conifer plantation with evidence of commercial thinning, otherwise habitat is mostly tolerant hardwood; Watercourse eventually discharged into WC32, and flows under roadway via open bottom bridge structure.
WC32	Small permanent	Channel Width = 1.30 Wetted Width = 1.05 Right Bank Depth = 0.05 Center Depth = 0.12 Left Bank Depth = 0.07 Thalweg = 0.15	0.48	Bedrock = 0 Boulder (>25 cm) = 10 Cobble (3-25 cm) = 40 Gravel (2 mm-3 cm) = 40 Sand (0.06-2 mm) = 10 Fines (<0.06 mm) = 0	Riffle, Run	South	0.11	pH = 7.3 Temperature (°C) = 15.2 Dissolved Oxygen (mg/L) = 7.65 Dissolved Oxygen (%) = 72.5 Conductivity (mS/cm) = 0.04	Boulders = M Overhanging Vegetation = M Canopy Cover = N Instream Vegetation = M Large Woody Debris = M Small Woody Debris = T Deep Pools = N	Left Bank = 0.05 Right Bank = 0.05	High stability; Active erosion; Both banks undercut	Boulders, cobbles, gravel, herbaceous roots	Fish observed; Habitat Suitability is low	Yes, culvert present.	Higher than average flow, much of the stream is exposed beside the road; Multiple smaller drainage channels discharge into the watercourse between the road and the northern-most transect; Areas along roadside eroding due to recent flow increase.
WC35	Intermittent	Channel Width = 1.82 Wetted Width = 1.12 Right Bank Depth = 0.04 Center Depth = 0.15 Left Bank Depth = 0.17 Thalweg = 0.19	0.28	Bedrock = 0 Boulder (>25 cm) = 0 Cobble (3-25 cm) = 10 Gravel (2 mm-3 cm) = 10 Sand (0.06-2 mm) = 5 Fines (<0.06 mm) = 85	Flat	South	0.083	pH = 6.86 Temperature (°C) = 18.7 Dissolved Oxygen (mg/L) = 6.15 Dissolved Oxygen (%) = 59.2 Conductivity (mS/cm) = 0.06	Boulders = N Overhanging Vegetation = M Canopy Cover = T Instream Vegetation = M Large Woody Debris = M Small Woody Debris = M Deep Pools = N	Left Bank = 0.15 Right Bank = 0	Right bank unstable; Left bank moderately stable; Left bank undercut	Moss, muck, grass	None observed; Habitat Suitability is low	None observed.	Watercourse begins as drainage from wetland, eventually discharges into larger watercourse (WC38).
WC38	Large permanent	Channel Width = 3.70 Wetted Width = 2.10 Right Bank Depth = 0.16 Center Depth = 0.28 Left Bank Depth = 0.09 Thalweg = 0.23	0.36	Bedrock = 0 Boulder (>25 cm) = 25 Cobble (3-25 cm) = 30 Gravel (2 mm-3 cm) = 30 Sand (0.06-2 mm) = 5 Fines (<0.06 mm) = 0	Run, Flat	East	0.142	pH = 7.06 Temperature (°C) = 17.3 Dissolved Oxygen (mg/L) = 7.22 Dissolved Oxygen (%) = 74.3 Conductivity (mS/cm) = 0.04	Boulders = M Overhanging Vegetation = T Canopy Cover = M Instream Vegetation = T Large Woody Debris = M Small Woody Debris = M Deep Pools = N	Left Bank = 0 Right Bank = 0.21	High stability; Right bank undercut	Gravel, cobbles, moss	None observed; Habitat Suitability is moderate	None observed.	Majority of watercourse is covered by blowdown.
WC40	Small permanent	Channel Width = 2.10 Wetted Width = 1.68 Right Bank Depth = 0.18 Center Depth = 0.17 Left Bank Depth = 0.10 Thalweg = 0.25	0.17	Bedrock = 0 Boulder (>25 cm) = 0 Cobble (3-25 cm) = 0 Gravel (2 mm-3 cm) = 0 Sand (0.06-2 mm) = 0 Fines (<0.06 mm) = 100	Pool, Flat	East	0.01	Not recorded	Boulders = T Overhanging Vegetation = A Canopy Cover = T Instream Vegetation = M Large Woody Debris = A Small Woody Debris = M Deep Pools = N	Left Bank = 0 Right Bank = 0	Low stability; No undercut	Graminoids	None observed; Habitat Suitability is low	Yes, culvert present.	Lots of blowdown in the area; Upstream not accessible due to extreme volume of blowdown.
WC41	Small permanent	Channel Width = 0.50 Wetted Width = 0.40 Right Bank Depth = 0.13 Center Depth = 0.15 Left Bank Depth = 0.12 Thalweg = 0.16	0.35	Bedrock = 0 Boulder (>25 cm) = 0 Cobble (3-25 cm) = 0 Gravel (2 mm-3 cm) = 0 Sand (0.06-2 mm) = 45 Fines (<0.06 mm) = 55	Riffle, Flat	South	0.1	Not recorded	Boulders = N Overhanging Vegetation = A Canopy Cover = A Instream Vegetation = A Large Woody Debris = A Small Woody Debris = A Deep Pools = N	Left Bank = 0.13 Right Bank = 0.10	Moderate stability; Both banks undercut	Herbaceous and graminoid species	None observed; Habitat Suitability is low	None observed.	Slow movement has allowed the buildup of fines and muck.
WC42	Small permanent	Channel Width = 1.73 Wetted Width = 1.70 Right Bank Depth = 0.14 Center Depth = 0.11 Left Bank Depth = 0.05 Thalweg = 0.20	0.14	Bedrock = 0 Boulder (>25 cm) = 5 Cobble (3-25 cm) = 0 Gravel (2 mm-3 cm) = 5 Sand (0.06-2 mm) = 20 Fines (<0.06 mm) = 70	Pool	Southeast	0.05	Not recorded	Boulders = T Overhanging Vegetation = T Canopy Cover = M Instream Vegetation = N Large Woody Debris = N Small Woody Debris = T Deep Pools = N	Left Bank = 0 Right Bank = 0.05	Right bank moderately stable; Left bank highly stable; Active erosion; Right bank undercut	Soil, roots, wood, rock	None observed; Habitat Suitability is low	Yes, culvert present.	Right bank is undercut and built on old wood.
WC43	Intermittent	Channel Width = 0.72 Wetted Width = 0.36 Right Bank Depth = 0.01 Center Depth = 0.02 Left Bank Depth = 0.02 Thalweg = 0.02	0.19	Bedrock = 0 Boulder (>25 cm) = 0 Cobble (3-25 cm) = 10 Gravel (2 mm-3 cm) = 0 Sand (0.06-2 mm) = 0 Fines (<0.06 mm) = 90	Run	Northeast	N/A	Not recorded	Boulders = T Overhanging Vegetation = T Canopy Cover = M Instream Vegetation = N Large Woody Debris = N Small Woody Debris = M Deep Pools = N	Left Bank = 0 Right Bank = 0	High stability; No undercut	Soil, roots, rock	None observed; Habitat Suitability is low	None observed.	Watercourse is intermittently subterranean.
WC44	Intermittent	Channel Width = 0.84 Wetted Width = 0.62 Right Bank Depth = 0.04 Center Depth = 0.05 Left Bank Depth = 0.02 Thalweg = 0.06	0.25	Bedrock = 0 Boulder (>25 cm) = 0 Cobble (3-25 cm) = 60 Gravel (2 mm-3 cm) = 0 Sand (0.06-2 mm) = 0 Fines (<0.06 mm) = 40	Flat	Northwest	0.027	Not recorded	Boulders = N Overhanging Vegetation = T Canopy Cover = A Instream Vegetation = T Large Woody Debris = N Small Woody Debris = T Deep Pools = N	Left Bank = 0 Right Bank = 0	Moderately stable; No undercut	Moss, leaf litter, herbaceous plants	None observed; Habitat Suitability is low	None observed.	Contiguous with wetland; Substrate contains lush green moss on cobble.
WC45	Intermittent	Channel Width = 1.62 Wetted Width = 1.14 Right Bank Depth = 0.01 Center Depth = 0.03 Left Bank Depth = 0.02 Thalweg = 0.09	0.31	Bedrock = 0 Boulder (>25 cm) = 30 Cobble (3-25 cm) = 30 Gravel (2 mm-3 cm) = 0 Sand (0.06-2 mm) = 0 Fines (<0.06 mm) = 40	Flat, Run	West	0.027	Not recorded	Boulders = N Overhanging Vegetation = T Canopy Cover = A Instream Vegetation = N Large Woody Debris = N Small Woody Debris = T Deep Pools = N	Left Bank = 0 Right Bank = 0	Low stability; No undercut	Leaf litter, ferns	None observed; Habitat Suitability is low	None observed.	Slow flow, areas on muck buildup.

Watercourse ID	Watercourse Type	Watercourse Measurements (m)	Bankfull Depth (m)	Substrate (%)	Habitat Characteristic	Direction of Flow	Velocity (m/s)	Water Quality	In Stream Cover*	Undercut Measurements (m)	Bank Characteristics	Bank Notes	Fish Presence	Evidence of Alteration	Other Observations
WC46	Intermittent	Channel Width = 2.20 Wetted Width = 1.62 Right Bank Depth = 0.02 Center Depth = 0.07 Left Bank Depth = 0.02 Thalweg = 0.13	0.16	Bedrock = 0 Boulder (>25 cm) = 10 Cobble (3-25 cm) = 50 Gravel (2 mm-3 cm) = 30 Sand (0.06-2 mm) = 5 Fines (<0.06 mm) = 5	Riffle	South	N/A	pH = 5.4 Temperature (°C) = 19.6 Dissolved Oxygen (mg/L) = 8.12 Dissolved Oxygen (%) = 80.8 Conductivity (mS/cm) = 0.02	Boulders = T Overhanging Vegetation = N Canopy Cover = M Instream Vegetation = T Large Woody Debris = N Small Woody Debris = N Deep Pools = N	Left Bank = 0 Right Bank = 0	Right bank moderately stable; Left bank highly stable; No undercut	Fines, cobble, gravel, boulders, right bank disturbed from uprooted tree	None observed; Habitat Suitability is low	None observed.	Starts as ephemeral draining from wet area outside of A; Steep sloping with riparian habitat consisting of mature hardwoods.
WC47	Intermittent	Channel Width = 1.39 Wetted Width = 1.06 Right Bank Depth = 0.02 Center Depth = 0.06 Left Bank Depth = 0.04 Thalweg = 0.16	0.21	Bedrock = 0 Boulder (>25 cm) = 0 Cobble (3-25 cm) = 0 Gravel (2 mm-3 cm) = 30 Sand (0.06-2 mm) = 10 Fines (<0.06 mm) = 60	Flat	South	0.018	Not recorded	Boulders = N Overhanging Vegetation = T Canopy Cover = A Instream Vegetation = N Large Woody Debris = N Small Woody Debris = A Deep Pools = N	Left Bank = 0 Right Bank = 0	Low stability; No undercut	Ferns, leaf litter, tree roots	None observed; Habitat Suitability is low	None observed.	Steady flow, lots of small woody debris.
WC48	Small permanent	Channel Width = 0.59 Wetted Width = 0.72 Right Bank Depth = 0.15 Center Depth = 0.13 Left Bank Depth = 0.10 Thalweg = 0.18	0.18	Bedrock = 0 Boulder (>25 cm) = 0 Cobble (3-25 cm) = 20 Gravel (2 mm-3 cm) = 55 Sand (0.06-2 mm) = 25 Fines (<0.06 mm) = 0	Flat, Pool	South	0.081	Not recorded	Boulders = T Overhanging Vegetation = M Canopy Cover = M Instream Vegetation = T Large Woody Debris = M Small Woody Debris = M Deep Pools = N	Left Bank = 0.10 Right Bank = 0.08	Moderate stability; No undercut	Moss, graminoids	None observed; Habitat Suitability is low	None observed.	Wetland drainage; we've had a large amount of rainfall in the last 24 hours, this watercourse could be intermittent and swollen from the rain.
WC49	Small permanent	Channel Width = 0.88 Wetted Width = 0.60 Right Bank Depth = 0.01 Center Depth = 0.05 Left Bank Depth = 0.03 Thalweg = 0.27	0.18	Bedrock = 0 Boulder (>25 cm) = 0 Cobble (3-25 cm) = 75 Gravel (2 mm-3 cm) = 10 Sand (0.06-2 mm) = 10 Fines (<0.06 mm) = 5	Pool, Riffle, Run	West	0.32	pH = 7.05 Temperature (°C) = 16.1 Dissolved Oxygen (mg/L) = 8.25 Dissolved Oxygen (%) = 83.5 Conductivity (mS/cm) = 0.03	Boulders = N Overhanging Vegetation = N Canopy Cover = A Instream Vegetation = N Large Woody Debris = N Small Woody Debris = M Deep Pools = N	Left Bank = 0.03 Right Bank = 0.10	Moderate stability; Both banks undercut	Fines	None observed; Habitat Suitability is moderate	No observable culvert at crossing - could be very old bridge or wood box culvert	Water is travelling very slowly on downstream side of crossing, pooling and creating many flow paths.
WC50	Small permanent	Channel Width = 1.75 Wetted Width = 1.35 Right Bank Depth = 0.07 Center Depth = 0.10 Left Bank Depth = 0.07 Thalweg = 0.11	0.15	Bedrock = 0 Boulder (>25 cm) = 5 Cobble (3-25 cm) = 35 Gravel (2 mm-3 cm) = 40 Sand (0.06-2 mm) = 10 Fines (<0.06 mm) = 10	Riffle, Run	Southwest	0.17	pH = 7.05 Temperature (°C) = 15.6 Dissolved Oxygen (mg/L) = 8.83 Dissolved Oxygen (%) = 84.1 Conductivity (mS/cm) = 0.06	Boulders = T Overhanging Vegetation = T Canopy Cover = A Instream Vegetation = N Large Woody Debris = N Small Woody Debris = T Deep Pools = N	Left Bank = 0.12 Right Bank = 0.02	Moderate stability; Both banks undercut	Gravel, sand, fines	None observed; Habitat Suitability is moderate	Yes, culvert present.	Active erosion observed. High flow is causing scoring of banks.
WC51	Small permanent	Channel Width = 7.38 Wetted Width = 5.48 Right Bank Depth = 0.05 Center Depth = 0.16 Left Bank Depth = 0.10 Thalweg = 0.20	0.69	Bedrock = 0 Boulder (>25 cm) = 10 Cobble (3-25 cm) = 75 Gravel (2 mm-3 cm) = 10 Sand (0.06-2 mm) = 5 Fines (<0.06 mm) = 0	Riffle, Run	East	0.83	pH = 6.70 Temperature (°C) = 18.5 Dissolved Oxygen (mg/L) = 8.3 Dissolved Oxygen (%) = 89.3 Conductivity (mS/cm) = 0.04	Boulders = M Overhanging Vegetation = A Canopy Cover = M Instream Vegetation = N Large Woody Debris = M Small Woody Debris = M Deep Pools = N	Left Bank = 0 Right Bank = 0	Moderate stability; Active erosion; No undercut	Fines, sand, cobble	None observed; Habitat Suitability is moderate	None observed.	Beaver dam close to the upstream edge, high volumes of rain have likely altered the area causing parts of the dam to burst leading to new/split water channels; Lots of deadfall in and next to the stream and eroding banks; Main part of beaver dam is potential good habitat for fish spawning and turtles due to sandy banks, and potential habitat for bats due to large snags; Watercourse has some fringe wetland that could not be accessed, visible on imagery; Sediment deposits observed along banks as well as matted vegetation from water surging.
WC52	Intermittent	Channel Width = 2.77 Wetted Width = 2.65 Right Bank Depth = 0.16 Center Depth = 0.13 Left Bank Depth = 0.11 Thalweg = 0.20	0.38	Bedrock = 0 Boulder (>25 cm) = 15 Cobble (3-25 cm) = 55 Gravel (2 mm-3 cm) = 15 Sand (0.06-2 mm) = 10 Fines (<0.06 mm) = 5	Riffle, Run	East	0.19	pH = 4.74 Temperature (°C) = 15.9 Dissolved Oxygen (mg/L) = 6.10 Dissolved Oxygen (%) = 60.9 Conductivity (mS/cm) = 0.03	Boulders = M Overhanging Vegetation = N Canopy Cover = N Instream Vegetation = M Large Woody Debris = M Small Woody Debris = A Deep Pools = N	Left Bank = 0.05 Right Bank = 0.16	Moderate stability; Both banks undercut	Fines	None observed; Habitat Suitability is low	None observed.	Significant deadfall; Upstream becomes mostly subterranean; Water is tea coloured throughout.
WC53	Small permanent	Channel Width = 3.22 Wetted Width = 3.13 Right Bank Depth = 0.23 Center Depth = 0.26 Left Bank Depth = 0.26 Thalweg = 0.39	0.42	Bedrock = 0 Boulder (>25 cm) = 0 Cobble (3-25 cm) = 0 Gravel (2 mm-3 cm) = 15 Sand (0.06-2 mm) = 80 Fines (<0.06 mm) = 5	Run, Pool, Riffle	North	0.2	pH = 5.06 Temperature (°C) = 13.6 Dissolved Oxygen (mg/L) = 7.18 Dissolved Oxygen (%) = 74.4 Conductivity (mS/cm) = 0.03	Boulders = N Overhanging Vegetation = A Canopy Cover = M Instream Vegetation = A Large Woody Debris = A Small Woody Debris = A Deep Pools = N	Left Bank = 0.09 Right Bank = 0.08	Moderate stability; Active erosion; Both banks undercut	Mosses, grasses, trees, root mats	Fish observed; Habitat Suitability is high	Yes, culvert present.	This is one of two smaller streams which merge into one, the two smaller streams move across road through culvert; The smaller streams are 50 m apart along the road; Alders abundant; Lots of blowdown, difficult to traverse; Fish of varying sizes observed; A third stream moves from delineated wetland to the north (which changes between channelized stream to wetland, back to stream) and enters watercourse.
WC54	Small permanent	Channel Width = 2.08 Wetted Width = 1.73 Right Bank Depth = 0.02 Center Depth = 0.03 Left Bank Depth = 0.05 Thalweg = 0.06	0.24	Bedrock = 0 Boulder (>25 cm) = 15 Cobble (3-25 cm) = 40 Gravel (2 mm-3 cm) = 15 Sand (0.06-2 mm) = 15 Fines (<0.06 mm) = 25	Riffle	Northeast	0.074	pH = 6.41 Temperature (°C) = 17.6 Dissolved Oxygen (mg/L) = 6.53 Dissolved Oxygen (%) = 69.3 Conductivity (mS/cm) = 0.03	Boulders = A Overhanging Vegetation = A Canopy Cover = M Instream Vegetation = A Large Woody Debris = A Small Woody Debris = A Deep Pools = N	Left Bank = 0.05 Right Bank = 0	Right bank moderately stable; Left bank highly stable; Active erosion; Left bank undercut	Boulders, moss, sedges, cobble, muck, fines	None observed; Habitat Suitability is low	None observed.	Tons of deadfall across watercourse; Watercourse forks into two; Large uprooted tree on right side has exposed a lot of fines and rocks, stream seems to be widening into this area a lot and there is a higher percentage of fines here than upstream.
WC55	Small permanent	Channel Width = 4.11 Wetted Width = 3.59 Right Bank Depth = 0.19 Center Depth = 0.15 Left Bank Depth = 0.14 Thalweg = 0.19	0.68	Bedrock = 0 Boulder (>25 cm) = 5 Cobble (3-25 cm) = 45 Gravel (2 mm-3 cm) = 15 Sand (0.06-2 mm) = 15 Fines (<0.06 mm) = 20	Pool, Riffle, Run	East	0.069	pH = 6.80 Temperature (°C) = 16.7 Dissolved Oxygen (mg/L) = Not recorded Dissolved Oxygen (%) = Not recorded Conductivity (mS/cm) = 0.03	Boulders = T Overhanging Vegetation = T Canopy Cover = M Instream Vegetation = N Large Woody Debris = A Small Woody Debris = T Deep Pools = N	Left Bank = 0.07 Right Bank = 0	Unstable; Active erosion; Left bank undercut	Fines	None observed; Habitat Suitability is moderate	None observed.	Watercourse has some small, short-lived offshoots and banks/islands with matted grass showing overland flow patterns; Soil eroding from banks into stream, exposed roots.
WC56	Small permanent	Channel Width = 1.53 Wetted Width = 1.51 Right Bank Depth = 0.14 Center Depth = 0.02 Left Bank Depth = 0.09 Thalweg = 0.17	0.55	Bedrock = 0 Boulder (>25 cm) = 0 Cobble (3-25 cm) = 30 Gravel (2 mm-3 cm) = 25 Sand (0.06-2 mm) = 45 Fines (<0.06 mm) = 0	Pool	East	0.109	Not recorded	Boulders = T Overhanging Vegetation = M Canopy Cover = M Instream Vegetation = T Large Woody Debris = M Small Woody Debris = M Deep Pools = N	Left Bank = 0.17 Right Bank = 0.13	Moderate stability; Both banks undercut	Roots, sand	None observed; Habitat Suitability is low	None observed.	Watercourse converges with previously delineated watercourse (WC55).
WC57	Small permanent	Channel Width = 0.75 Wetted Width = 0.67 Right Bank Depth = 0.05 Center Depth = 0.07 Left Bank Depth = 0.03 Thalweg = 0.07	0.52	Bedrock = 0 Boulder (>25 cm) = 60 Cobble (3-25 cm) = 20 Gravel (2 mm-3 cm) = 10 Sand (0.06-2 mm) = 10 Fines (<0.06 mm) = 0	Run	North	N/A	Not recorded	Boulders = A Overhanging Vegetation = A Canopy Cover = A Instream Vegetation = N Large Woody Debris = M Small Woody Debris = M Deep Pools = N	Left Bank = 0.1 Right Bank = 0	High stability; Left bank undercut	Cobbles, boulders, tree roots	None observed; Habitat Suitability is low	None observed.	Substrate is clear water with abundant cobbles - good salmon habitat.
WC58	Small permanent	Channel Width = 1.45 Wetted Width = 1.08 Right Bank Depth = 0.01 Center Depth = 0.12 Left Bank Depth = 0.01 Thalweg = 0.12	0.85	Bedrock = 0 Boulder (>25 cm) = 10 Cobble (3-25 cm) = 70 Gravel (2 mm-3 cm) = 20 Sand (0.06-2 mm) = 0 Fines (<0.06 mm) = 0	Run	North	0.312	Not recorded	Boulders = N Overhanging Vegetation = T Canopy Cover = M Instream Vegetation = N Large Woody Debris = M Small Woody Debris = A Deep Pools = N	Left Bank = 0.1 Right Bank = 0	Right bank moderately stable; Left bank highly stable; Left bank undercut	Boulders, tree roots, gravel, sand	None observed; Habitat Suitability is low	None observed.	Heavy flow is causing downcutting in channel.
WC59	Intermittent	Channel Width = 0.88 Wetted Width = 0.36 Right Bank Depth = 0.01 Center Depth = 0.01 Left Bank Depth = 0.03 Thalweg = 0.04	0.28	Bedrock = 0 Boulder (>25 cm) = 0 Cobble (3-25 cm) = 30 Gravel (2 mm-3 cm) = 40 Sand (0.06-2 mm) = 30 Fines (<0.06 mm) = 0	Pool, Run	North	N/A	Not recorded	Boulders = N Overhanging Vegetation = M Canopy Cover = T Instream Vegetation = M Large Woody Debris = M Small Woody Debris = M Deep Pools = N	Left Bank = 0.04 Right Bank = 0	High stability; Left bank undercut	Sphagnum moss, small woody debris	None observed; Habitat Suitability is low	None observed.	Water is moving at a quick pace but too many obstructions to measure velocity.



Photo 1. A representative photo of WC2.



Photo 2. A representative photo of WC4.



Photo 3. A representative photo of WC5.



Photo 4. A representative photo of WC6.

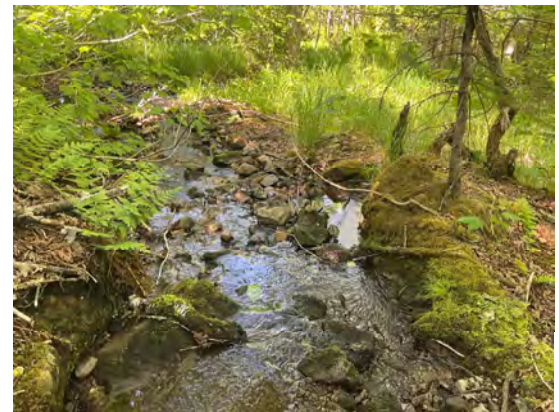


Photo 5. A representative photo of WC7.



Photo 6. A representative photo of WC8.



Photo 7. A representative photo of WC9.



Photo 8. A representative photo of WC11.



Photo 9. A representative photo of WC18A.



Photo 10. A representative photo of WC18B.



Photo 11. A representative photo of WC19.



Photo 12. A representative photo of WC20.



Photo 13. A representative photo of WC21.



Photo 14. A representative photo of WC22.



Photo 15. A representative photo of WC23.



Photo 16. A representative photo of WC24.



Photo 17. A representative photo of WC25.



Photo 18. A representative photo of WC26.

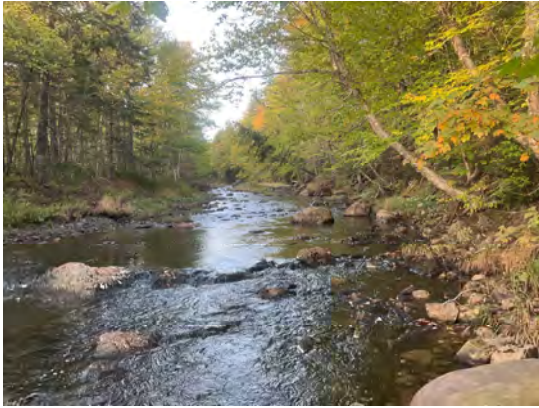


Photo 19. A representative photo of WC28.



Photo 20. A representative photo of WC29.



Photo 21. A representative photo of WC32.



Photo 22. A representative photo of WC35.



Photo 23. A representative photo of WC38.



Photo 24. A representative photo of WC40.



Photo 25. A representative photo of WC41.



Photo 26. A representative photo of WC42.



Photo 27. A representative photo of WC43.



Photo 28. A representative photo of WC44.



Photo 29. A representative photo of WC45.



Photo 30. A representative photo of WC46.



Photo 31. A representative photo of WC47.



Photo 32. A representative photo of WC48.



Photo 33. A representative photo of WC49.



Photo 34. A representative photo of WC50.



Photo 35. A representative photo of WC51.



Photo 36. A representative photo of WC52.



Photo 37. A representative photo of WC53.



Photo 38. A representative photo of WC54.



Photo 39. A representative photo of WC55.



Photo 40. A representative photo of WC56.



Photo 41. A representative photo of WC57.



Photo 42. A representative photo of WC58.



Photo 43. A representative photo of WC59.



Photo 1. A representative photo of the surveyed tributary of Middle Branch North River.



Photo 2. A Brook trout (*Salvelinus fontinalis*) caught while electrofishing a tributary of Middle Branch North River.



Photo 3. A representative photo of the surveyed portion of Cavanagh Brook.



Photo 4. A Brook trout (*Salvelinus fontinalis*) caught while electrofishing Cavanagh Brook.



Photo 5. A Brown trout (*Salmo trutta*) caught while electrofishing Cavanagh Brook.

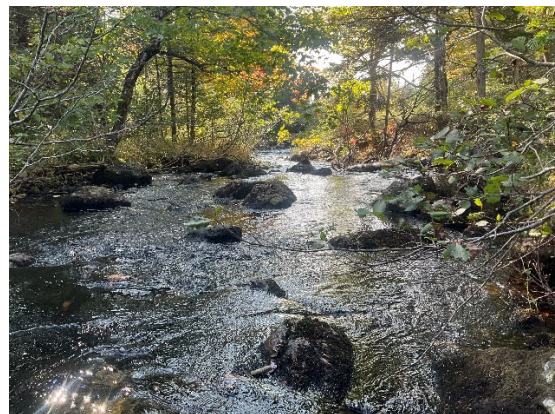


Photo 6. A representative photo of the surveyed portion of West Branch North River.



Photo 7. A Brook trout (*Salvelinus fontinalis*) caught while electrofishing West Branch North River.



Photo 8. An American eel (*Anguilla rostrata*) caught while electrofishing West Branch North River.

APPENDIX G
ACCDC REPORT

DATA REPORT 7738: Nuttby, NS

Prepared 27 June 2023

by J. Churchill, Data Manager

CONTENTS OF REPORT

1.0 Preface

1.1 Data List

1.2 Restrictions

1.3 Additional Information

Map 1: Buffered Study Area

2.0 Rare and Endangered Species

2.1 Flora

2.2 Fauna

Map 2: Flora and Fauna

3.0 Special Areas

3.1 Managed Areas

3.2 Significant Areas

Map 3: Special Areas

4.0 Rare Species Lists

4.1 Fauna

4.2 Flora

4.3 Location Sensitive Species

4.4 Source Bibliography

5.0 Rare Species within 100 km

5.1 Source Bibliography



Map 1. A 100 km buffer around the study area

1.0 PREFACE

The Atlantic Canada Conservation Data Centre (AC CDC; www.accdc.com) is part of a network of NatureServe data centres and heritage programs serving 50 states in the U.S.A, 10 provinces and 1 territory in Canada, plus several Central and South American countries. The NatureServe network is more than 30 years old and shares a common conservation data methodology. The AC CDC was founded in 1997, and maintains data for the jurisdictions of New Brunswick, Nova Scotia, Prince Edward Island, and Newfoundland and Labrador. Although a non-governmental agency, the AC CDC is supported by 6 federal agencies and 4 provincial governments, as well as through outside grants and data processing fees.

Upon request and for a fee, the AC CDC queries its database and produces customized reports of the rare and endangered flora and fauna known to occur in or near a specified study area. As a supplement to that data, the AC CDC includes locations of managed areas with some level of protection, and known sites of ecological interest or sensitivity.

1.1 DATA LIST

Included datasets:

Filename

NuttbyNS_7738ob.xls

NuttbyNS_7738ob100km.xls

NuttbyNS_7738msa.xls

NuttbyNS_7738ff_py.xls

Contents

Rare or legally-protected Flora and Fauna in your study area

A list of Rare and legally protected Flora and Fauna within 100 km of your study area

Managed and Biologically Significant Areas in your study area

Rare Freshwater Fish in your study area (DFO database)

1.2 RESTRICTIONS

The AC CDC makes a strong effort to verify the accuracy of all the data that it manages, but it shall not be held responsible for any inaccuracies in data that it provides. By accepting AC CDC data, recipients assent to the following limits of use:

- a) Data is restricted to use by trained personnel who are sensitive to landowner interests and to potential threats to rare and/or endangered flora and fauna posed by the information provided.
- b) Data is restricted to use by the specified Data User; any third party requiring data must make its own data request.
- c) The AC CDC requires Data Users to cease using and delete data 12 months after receipt, and to make a new request for updated data if necessary at that time.
- d) AC CDC data responses are restricted to the data in our Data System at the time of the data request.
- e) Each record has an estimate of locational uncertainty, which must be referenced in order to understand the record's relevance to a particular location. Please see attached Data Dictionary for details.
- f) AC CDC data responses are not to be construed as exhaustive inventories of taxa in an area.
- g) The absence of a taxon cannot be inferred by its absence in an AC CDC data response.

1.3 ADDITIONAL INFORMATION

The accompanying Data Dictionary provides metadata for the data provided.

Please direct any additional questions about AC CDC data to the following individuals:

Plants, Lichens, Ranking Methods, All other Inquiries

Sean Blaney
Senior Scientist / Executive Director
(506) 364-2658
sean.blaney@accdc.ca

Animals (Fauna)

John Klymko
Zoologist
(506) 364-2660
john.klymko@accdc.ca

Data Management, GIS

James Churchill
Conservation Data Analyst / Field Biologist
(902) 679-6146
james.churchill@accdc.ca

Billing

Jean Breau
Financial Manager / Executive Assistant
(506) 364-2657
jean.breau@accdc.ca

Questions on the biology of Federal Species at Risk can be directed to AC CDC: (506) 364-2658, with questions on Species at Risk regulations to: Samara Eaton, Canadian Wildlife Service (NB and PE): (506) 364-5060 or Julie McKnight, Canadian Wildlife Service (NS): (902) 426-4196.

For provincial information about rare taxa and protected areas, or information about game animals, deer yards, old growth forests, archeological sites, fish habitat etc., in New Brunswick, please contact Hubert Askanas, Energy and Resource Development: (506) 453-5873.

For provincial information about rare taxa and protected areas, or information about game animals, deer yards, old growth forests, archeological sites, fish habitat etc., in Nova Scotia, please contact Donna Hurlburt, NS DLF: (902) 679-6886. To determine if location-sensitive species (section 4.3) occur near your study site please contact a NS DLF Regional Biologist:

Western: Emma Vost
(902) 670-8187
Emma.Vost@novascotia.ca

Western: Sarah Spencer
(902) 541-0081
Sarah.Spencer@novascotia.ca

Central: Shavonne Meyer
(902) 893-0816
Shavonne.Meyer@novascotia.ca

Central: Kimberly George
(902) 890-1046
Kimberly.George@novascotia.ca

Eastern: Harrison Moore
(902) 497-4119
Harrison.Moore@novascotia.ca

Eastern: Maureen Cameron-MacMillan
(902) 295-2554
Maureen.Cameron-MacMillan@novascotia.ca

Eastern: Elizabeth Walsh
(902) 563-3370
Elizabeth.Walsh@novascotia.ca

For provincial information about rare taxa and protected areas, or information about game animals, fish habitat etc., in Prince Edward Island, please contact Garry Gregory, PEI Dept. of Communities, Land and Environment: (902) 569-7595.

2.0 RARE AND ENDANGERED SPECIES

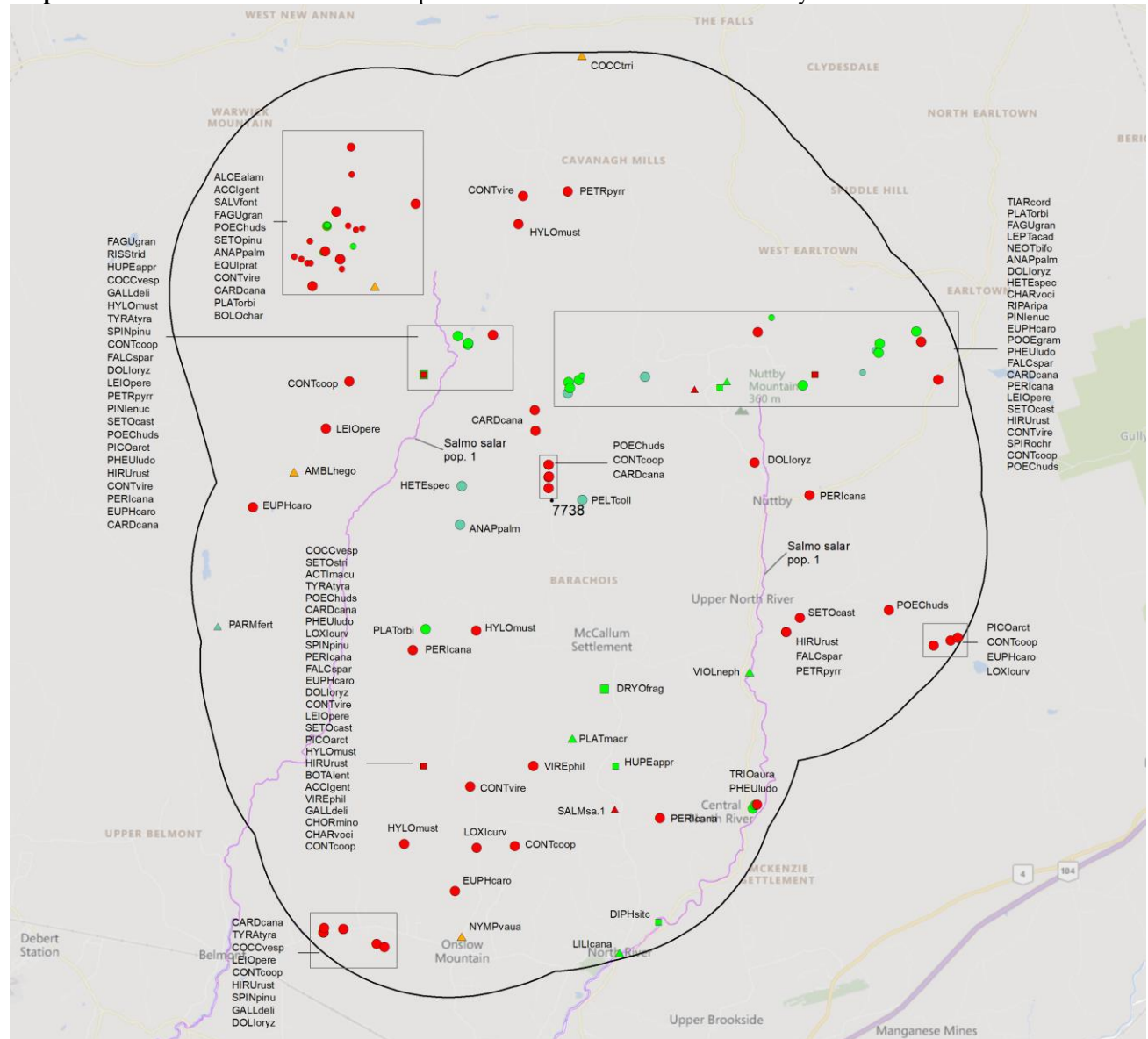
2.1 FLORA

The study area contains 36 records of 13 vascular and 9 records of 5 nonvascular flora (Map 2 and attached: *ob.xls), excluding 'location-sensitive' species.

2.2 FAUNA

The study area contains 267 records of 35 vertebrate and 4 records of 4 invertebrate fauna (Map 2 and attached data files - see 1.1 Data List), excluding 'location-sensitive' species'. Please see section 4.3 to determine if 'location-sensitive' species occur near your study site.

Map 2: Known observations of rare and/or protected flora and fauna within the study area.



RESOLUTION

- 4.7 within 50s of kilometers
- 4.0 within 10s of kilometers
- 3.7 within 5s of kilometers
- △ 3.0 within kilometers
- △ 2.7 within 500s of meters
- ◇ 2.0 within 100s of meters
- ◇ 1.7 within 10s of meters

HIGHER TAXON

- vertebrate fauna
- invertebrate fauna
- vascular flora
- nonvascular flora

3.0 SPECIAL AREAS

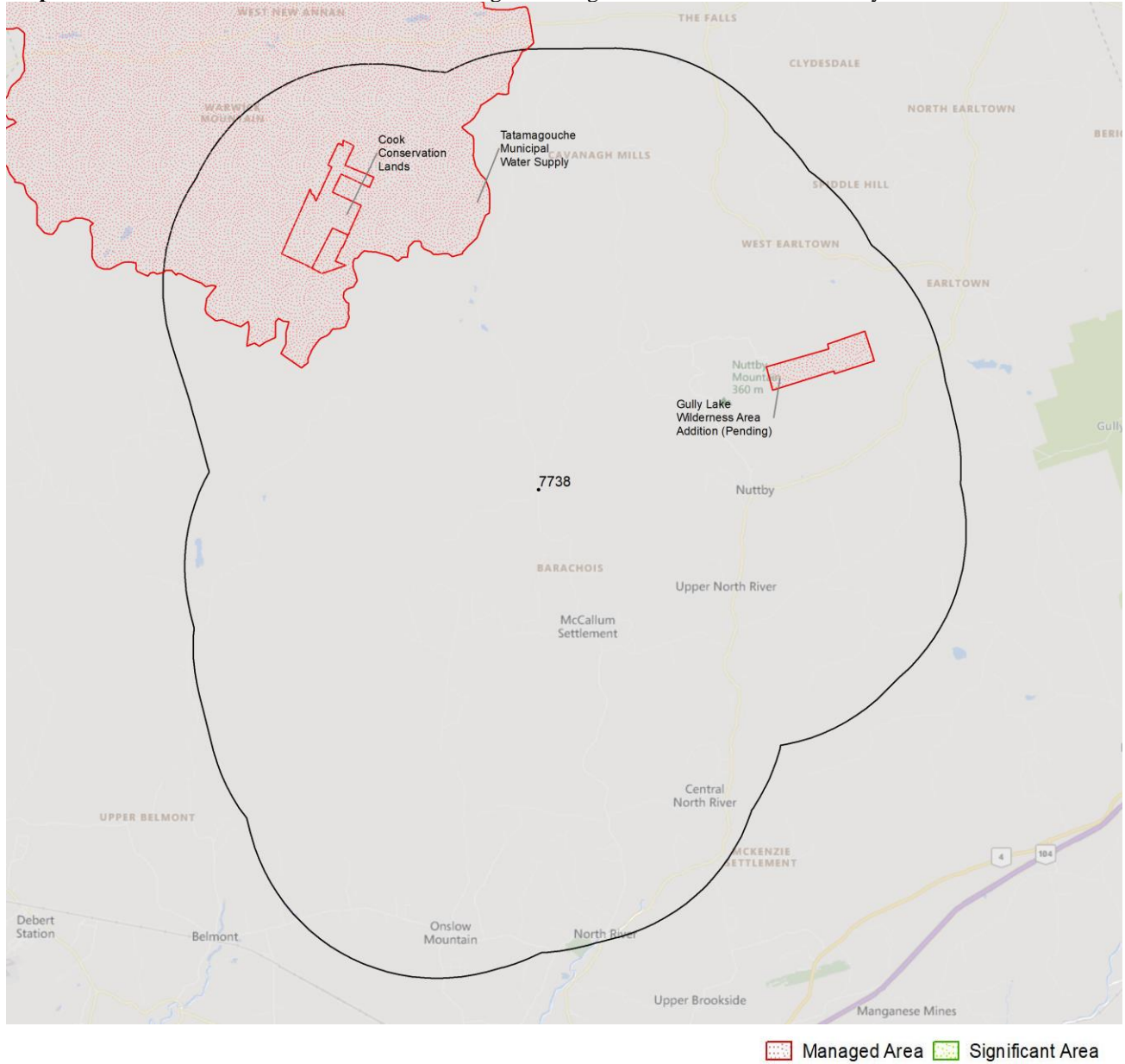
3.1 MANAGED AREAS

The GIS scan identified 4 managed areas in the vicinity of the study area (Map 3 and attached file: *msa.xls).

3.2 SIGNIFICANT AREAS

The GIS scan identified no biologically significant sites in the vicinity of the study area (Map 3).

Map 3: Boundaries and/or locations of known Managed and Significant Areas within the study area.



4.0 RARE SPECIES LISTS

Rare and/or endangered taxa (excluding “location-sensitive” species, section 4.3) within the study area listed in order of concern, beginning with legally listed taxa, with the number of observations per taxon and the distance in kilometers from study area centroid to the closest observation (\pm the precision, in km, of the record). [P] = vascular plant, [N] = nonvascular plant, [A] = vertebrate animal, [I] = invertebrate animal, [C] = community. Note: records are from attached files *ob.xls/*ob.shp only.

4.1 FLORA

	Scientific Name	Common Name	COSEWIC	SARA	Prov Legal Prot	Prov Rarity Rank	# recs	Distance (km)
N	<i>Parmelia fertilis</i>	Fertile Shield Lichen				S2S3	1	9.1 \pm 0.0
N	<i>Peltigera collina</i>	Tree Pelt Lichen				S3	1	0.8 \pm 0.0
N	<i>Leptogium acadiense</i>	Acadian Jellyskin Lichen				S3S4	2	8.6 \pm 0.0
N	<i>Heterodermia speciosa</i>	Powdered Fringe Lichen				S3S4	2	2.3 \pm 0.0
N	<i>Anaptychia palmulata</i>	Shaggy Fringed Lichen				S3S4	3	2.4 \pm 0.0
P	<i>Lilium canadense</i>	Canada Lily				S2	1	11.7 \pm 1.0
P	<i>Platanthera macrophylla</i>	Large Round-Leaved Orchid				S2	1	6.1 \pm 1.0
P	<i>Tiarella cordifolia</i>	Heart-leaved Foamflower				S2S3	7	9.2 \pm 0.0
P	<i>Triosteum aurantiacum</i>	Orange-fruited Tinker's Weed				S3	2	9.3 \pm 0.0
P	<i>Viola nephrophylla</i>	Northern Bog Violet				S3	1	6.7 \pm 1.0
P	<i>Neottia bifolia</i>	Southern Twayblade				S3	2	3.2 \pm 0.0
P	<i>Dryopteris fragrans</i>	Fragrant Wood Fern				S3	2	5.0 \pm 4.0
P	<i>Spiranthes ochroleuca</i>	Yellow Ladies'-tresses				S3?	1	5.2 \pm 0.0
P	<i>Fagus grandifolia</i>	American Beech				S3S4	10	10.3 \pm 0.0
P	<i>Platanthera orbiculata</i>	Small Round-leaved Orchid				S3S4	5	4.6 \pm 0.0
P	<i>Equisetum pratense</i>	Meadow Horsetail				S3S4	1	8.6 \pm 0.0
P	<i>Diphasiastrum sitchense</i>	Sitka Ground-cedar				S3S4	1	11.1 \pm 5.0
P	<i>Hupezia appressa</i>	Mountain Firmoss				S3S4	2	4.6 \pm 7.0

4.2 FAUNA

	Scientific Name	Common Name	COSEWIC	SARA	Prov Legal Prot	Prov Rarity Rank	# recs	Distance (km)
A	<i>Salmo salar pop. 1</i>	Atlantic Salmon - Inner Bay of Fundy population	Endangered	Endangered		S1	1	8.1 \pm 0.0
A	<i>Riparia riparia</i>	Bank Swallow	Threatened	Threatened	Endangered	S2B	1	7.5 \pm 7.0
A	<i>Hylocichla mustelina</i>	Wood Thrush	Threatened	Threatened		SUB	7	3.8 \pm 0.0
A	<i>Euphagus carolinus</i>	Rusty Blackbird	Special Concern	Special Concern	Endangered	S2B	8	10.3 \pm 0.0
A	<i>Hirundo rustica</i>	Barn Swallow	Special Concern	Threatened	Endangered	S3B	32	12.2 \pm 0.0
A	<i>Cardellina canadensis</i>	Canada Warbler	Special Concern	Threatened	Endangered	S3B	19	0.3 \pm 0.0
A	<i>Chordeiles minor</i>	Common Nighthawk	Special Concern	Special Concern	Threatened	S3B	1	7.5 \pm 7.0
A	<i>Contopus cooperi</i>	Olive-sided Flycatcher	Special Concern	Special Concern	Threatened	S3B	29	0.6 \pm 0.0
A	<i>Dolichonyx oryzivorus</i>	Bobolink	Special Concern	Threatened	Vulnerable	S3B	34	12.2 \pm 0.0
A	<i>Coccothraustes vespertinus</i>	Evening Grosbeak	Special Concern	Special Concern	Vulnerable	S3B,S3N,S3M	4	12.2 \pm 0.0
A	<i>Contopus virens</i>	Eastern Wood-Pewee	Special Concern	Special Concern	Vulnerable	S3S4B	14	4.6 \pm 7.0
A	<i>Accipiter gentilis</i>	Northern Goshawk	Not At Risk			S3S4	2	7.5 \pm 7.0
A	<i>Alces alces americana</i>	Moose			Endangered	S1	2	10.4 \pm 0.0
A	<i>Poocetes gramineus</i>	Vesper Sparrow				S1S2B,SUM	1	7.5 \pm 7.0
A	<i>Vireo philadelphicus</i>	Philadelphia Vireo				S2?B,SUM	2	6.8 \pm 0.0
A	<i>Rissa tridactyla</i>	Black-legged Kittiwake				S2S3B	1	4.5 \pm 0.0
A	<i>Petrochelidon pyrrhonota</i>	Cliff Swallow				S2S3B	3	4.6 \pm 7.0
A	<i>Setophaga pinus</i>	Pine Warbler				S2S3B,S4S5M	3	8.2 \pm 0.0
A	<i>Perisoreus canadensis</i>	Canada Jay				S3	15	4.6 \pm 7.0
A	<i>Poecile hudsonicus</i>	Boreal Chickadee				S3	17	0.9 \pm 0.0
A	<i>Spinus pinus</i>	Pine Siskin				S3	7	12.2 \pm 0.0
A	<i>Salvelinus fontinalis</i>	Brook Trout				S3	2	8.7 \pm 0.0
A	<i>Charadrius vociferus</i>	Killdeer				S3B	3	10.3 \pm 0.0

	Scientific Name	Common Name	COSEWIC	SARA	Prov Legal Prot	Prov Rarity Rank	# recs	Distance (km)
A	<i>Tyrannus tyrannus</i>	Eastern Kingbird				S3B	3	12.2 ± 0.0
A	<i>Pheucticus ludovicianus</i>	Rose-breasted Grosbeak				S3B	6	4.6 ± 7.0
A	<i>Falco sparverius</i>	American Kestrel				S3B,S4S5M	8	4.6 ± 7.0
A	<i>Gallinago delicata</i>	Wilson's Snipe				S3B,S5M	8	12.2 ± 0.0
A	<i>Setophaga striata</i>	Blackpoll Warbler				S3B,S5M	1	7.5 ± 7.0
A	<i>Pinicola enucleator</i>	Pine Grosbeak				S3B,S5N,S5M	2	4.6 ± 7.0
A	<i>Picoides arcticus</i>	Black-backed Woodpecker				S3S4	4	10.9 ± 0.0
A	<i>Loxia curvirostra</i>	Red Crossbill				S3S4	4	10.4 ± 0.0
A	<i>Botaurus lentiginosus</i>	American Bittern				S3S4B,S4S5M	2	7.5 ± 7.0
A	<i>Setophaga castanea</i>	Bay-breasted Warbler				S3S4B,S4S5M	9	4.6 ± 7.0
A	<i>Actitis macularius</i>	Spotted Sandpiper				S3S4B,S5M	3	7.5 ± 7.0
A	<i>Leiothlypis peregrina</i>	Tennessee Warbler				S3S4B,S5M	9	12.5 ± 0.0
I	<i>Coccinella transversoguttata richardsoni</i>	Transverse Lady Beetle	Special Concern		Endangered	SH	1	11.4 ± 2.0
I	<i>Boloria chariclea</i>	Arctic Fritillary				S1S2	1	7.1 ± 2.0
I	<i>Nymphalis l-album</i>	Compton Tortoiseshell				S2S3	1	11.4 ± 2.0
I	<i>Amblyscirtes hegon</i>	Pepper and Salt Skipper				S3S4	1	6.6 ± 1.0

4.3 LOCATION SENSITIVE SPECIES

The Department of Natural Resources in each Maritimes province considers a number of species “location sensitive”. Concern about exploitation of location-sensitive species precludes inclusion of precise coordinates in this report. Those intersecting your study area are indicated below with “YES”.

Nova Scotia

Scientific Name	Common Name	SARA	Prov Legal Prot	Known within the Study Site?
<i>Fraxinus nigra</i>	Black Ash		Threatened	YES
<i>Emydoidea blandingii</i>	<i>Blanding's Turtle - Nova Scotia pop.</i>	Endangered	Endangered	No
<i>Glyptemys insculpta</i>	Wood Turtle	Threatened	Threatened	No
<i>Falco peregrinus pop. 1</i>	Peregrine Falcon - anatum/tundrius pop.		Vulnerable	No
<i>Bat hibernaculum</i> or <i>bat species occurrence</i>		[Endangered] ¹	[Endangered] ¹	No

¹ *Myotis lucifugus* (Little Brown Myotis), *Myotis septentrionalis* (Long-eared Myotis), and *Perimyotis subflavus* (Tri-colored Bat or Eastern Pipistrelle) are all Endangered under the Federal Species at Risk Act and the NS Endangered Species Act.

4.4 SOURCE BIBLIOGRAPHY

The recipient of these data shall acknowledge the AC CDC and the data sources listed below in any documents, reports, publications or presentations, in which this dataset makes a significant contribution.

# recs	CITATION
162	Lepage, D. 2014. Maritime Breeding Bird Atlas Database. Bird Studies Canada, Sackville NB, 407,838 recs.
52	Pardieck, K.L., Ziolkowski Jr., D.J., Lutmerding, M., Aponte, V.I., and Hudson, M-A.R. 2020. North American Breeding Bird Survey Dataset 1966 - 2019: U.S. Geological Survey data release, https://doi.org/10.5066/P9J6QUF6
31	Erskine, A.J. 1992. Maritime Breeding Bird Atlas Database. NS Museum & Nimbus Publ., Halifax, 82,125 recs.
16	iNaturalist.ca. 2023. iNaturalist Data Export December 2022. iNaturalist.org; iNaturalist.ca.
9	Nussey, Pat & NCC staff. 2019. AEI tracked species records, 2016-2019. Chapman, C.J. (ed.) Atlantic Canada Conservation Data Centre, 333.
7	Bryson, I. 2013. Nova Scotia rare plant records. CBCL Ltd., 180 records.
6	Belliveau, A.G. 2018. Atlantic Canada Conservation Data Centre Fieldwork 2017. Atlantic Canada Conservation Data Centre.
6	Newell, R.E. 2000. E.C. Smith Herbarium Database. Acadia University, Wolfville NS, 7139 recs.
4	Walker, J. 2017. Bird inventories at French River, NS, and Memramcook, NB, for Nature Conservancy of Canada. Pers. comm. to AC CDC.
3	Blaney, C.S.; Mazerolle, D.M.; Oberndorfer, E. 2007. Fieldwork 2007. Atlantic Canada Conservation Data Centre. Sackville NB, 13770 recs.
3	iNaturalist. 2018. iNaturalist Data Export 2018. iNaturalist.org and iNaturalist.ca, Web site: 11700 recs.
3	iNaturalist. 2020. iNaturalist Data Export 2020. iNaturalist.org and iNaturalist.ca, Web site: 128728 recs.
3	Patrick, Allison. 2021. Animal and plant records from NCC properties from 2019 and 2020. Nature Conservancy Canada.

# recs	CITATION
2	Amiro, P.G. 1998. Atlantic Salmon Inner Bay of Fundy SFA 22 & part of 23. DFO Sci. SSR D3-12.
2	Canadian Wildlife Service. 2019. Canadian Protected and Conserved Areas Database (CPCAD). December 2019. ECCC. https://www.canada.ca/en/environment-climate-change/services/national-wildlife-areas/protected-conserved-areas-database.html .
2	Neily, T.H. & Pepper, C.; Toms, B. 2018. Nova Scotia lichen database [as of 2018-03]. Mersey Tobeatic Research Institute.
1	Benjamin, L.K. (compiler). 2007. Significant Habitat & Species Database. Nova Scotia Dept Natural Resources, 8439 recs.
1	Blaney, C.S.; Mazerolle, D.M. 2008. Fieldwork 2008. Atlantic Canada Conservation Data Centre. Sackville NB, 13343 recs.
1	Clayden, S. Digitization of Wolfgang Maass Nova Scotia forest lichen collections, 1964-2004. New Brunswick Museum. 2018.
1	e-Butterfly. 2016. Export of Maritimes records and photos. Maxim Larrivee, Sambo Zhang (ed.) e-butterfly.org.
1	Hughes, Cory. 2020. Atlantic Forestry Centre Coccinella transversoguttata collections. Canadian Forest Service, Atlantic Forestry Centre.
1	Layberry, R.A. & Hall, P.W., LaFontaine, J.D. 1998. The Butterflies of Canada. University of Toronto Press. 280 pp+plates.
1	Newell, R.E. 2005. E.C. Smith Digital Herbarium. E.C. Smith Herbarium, Irving Biodiversity Collection, Acadia University, Web site: http://luxor.acadiau.ca/library/Herbarium/project/ . 582 recs.
1	Nova Scotia Department of Lands and Forestry. 2020. NS Lands Proposed or Pending Protection. NSDLF, 231 features. Received via email.
1	Nova Scotia Dept Natural Resources, Forestry Branch. 2007. Restricted & Limited Use Land Database (RLUL). , http://www.gov.ns.ca/natr/FORESTRY/rul/downloadrul.htm .
1	Pronych, G. & Wilson, A. 1993. Atlas of Rare Vascular Plants in Nova Scotia. Nova Scotia Museum, Halifax NS, I:1-168, II:169-331. 1446 recs.
1	Zinck, M. & Roland, A.E. 1998. Roland's Flora of Nova Scotia. Nova Scotia Museum, 3rd ed., rev. M. Zinck; 2 Vol., 1297 pp.

5.0 RARE SPECIES WITHIN 100 KM

A 100 km buffer around the study area contains 58351 records of 155 vertebrate and 1841 records of 77 invertebrate fauna; 10189 records of 276 vascular and 3068 records of 169 nonvascular flora (attached: *ob100km.xls).

Taxa within 100 km of the study site that are rare and/or endangered in the province in which the study site occurs (including “location-sensitive” species). All ranks correspond to the province in which the study site falls, even for out-of-province records. Taxa are listed in order of concern, beginning with legally listed taxa, with the number of observations per taxon and the distance in kilometers from study area centroid to the closest observation (\pm the precision, in km, of the record).

Taxonomic Group	Scientific Name	Common Name	COSEWIC	SARA	Prov Legal Prot	Prov Rarity Rank	# recs	Distance (km)	Prov
A	<i>Myotis lucifugus</i>	Little Brown Myotis	Endangered	Endangered	Endangered	S1	121	23.2 \pm 0.0	NS
A	<i>Myotis septentrionalis</i>	Northern Myotis	Endangered	Endangered	Endangered	S1	85	29.9 \pm 0.0	NS
A	<i>Perimyotis subflavus</i>	Tricolored Bat	Endangered	Endangered	Endangered	S1	8	35.3 \pm 5.0	NS
A	<i>Salmo salar pop. 1</i>	Atlantic Salmon - Inner Bay of Fundy population	Endangered	Endangered		S1	34	8.1 \pm 0.0	NS
A	<i>Salmo salar pop. 6</i>	Atlantic Salmon - Nova Scotia Southern Upland population	Endangered			S1	28	54.7 \pm 0.0	NS
A	<i>Charadrius melodus melodus</i>	Piping Plover melodus subspecies	Endangered	Endangered	Endangered	S1B	1048	27.2 \pm 0.0	NS
A	<i>Sterna dougallii</i>	Roseate Tern	Endangered	Endangered	Endangered	S1B	7	95.0 \pm 0.0	NS
A	<i>Dermodochelys coriacea pop. 2</i>	Leatherback Sea Turtle - Atlantic population	Endangered	Endangered		S1S2N	1	83.8 \pm 1.0	NB
A	<i>Morone saxatilis pop. 2</i>	Striped Bass - Bay of Fundy population	Endangered			S2S3B,S2S3N	2	59.8 \pm 0.0	NS
A	<i>Lasiurus cinereus</i>	Hoary Bat	Endangered			SUB, S1M	7	79.0 \pm 1.0	PE
A	<i>Lasionycteris noctivagans</i>	Silver-haired Bat	Endangered			SUB,S1M	1	98.6 \pm 0.0	NS
A	<i>Lasiurus borealis</i>	Eastern Red Bat	Endangered			SUB,S1M	1	99.0 \pm 0.0	NB
A	<i>Catharus bicknelli</i>	Bicknell's Thrush	Threatened	Threatened	Endangered	S1B	1	61.2 \pm 7.0	NS
A	<i>Asio flammeus</i>	Short-eared Owl	Threatened	Special Concern		S1B	69	35.8 \pm 7.0	NS
A	<i>Glyptemys insculpta</i>	Wood Turtle	Threatened	Threatened	Threatened	S2	8085	12.9 \pm 1.0	NS
A	<i>Riparia riparia</i>	Bank Swallow	Threatened	Threatened	Endangered	S2B	2551	7.5 \pm 7.0	NS
A	<i>Chaetura pelagica</i>	Chimney Swift	Threatened	Threatened	Endangered	S2S3B,S1M	1372	13.7 \pm 7.0	NS
A	<i>Limosa haemastica</i>	Hudsonian Godwit	Threatened			S2S3M	169	26.5 \pm 0.0	NS
A	<i>Acipenser oxyrinchus</i>	Atlantic Sturgeon	Threatened			S2S3N	12	45.6 \pm 0.0	NS
A	<i>Hydrobates leucorhous</i>	Leach's Storm-Petrel	Threatened			S3B	5	95.1 \pm 0.0	NS
A	<i>Tringa flavipes</i>	Lesser Yellowlegs	Threatened			S3M	1415	20.6 \pm 0.0	NS
A	<i>Anguilla rostrata</i>	American Eel	Threatened			S3N	112	13.6 \pm 0.0	NS
A	<i>Sturnella magna</i>	Eastern Meadowlark	Threatened	Threatened		SHB	4	86.9 \pm 7.0	NS

Taxonomic Group	Scientific Name	Common Name	COSEWIC	SARA	Prov Legal Prot	Prov Rarity Rank	# recs	Distance (km)	Prov
A	<i>Ixobrychus exilis</i>	Least Bittern	Threatened	Threatened		SUB	9	79.3 ± 0.0	NS
A	<i>Hylocichla mustelina</i>	Wood Thrush	Threatened	Threatened		SUB	50	3.8 ± 0.0	NS
A	<i>Salmo salar pop. 12</i>	Atlantic Salmon - Gaspé - Southern Gulf of St. Lawrence population	Special Concern			S1	41	12.8 ± 50.0	NS
A	<i>Antrostomus vociferus</i>	Eastern Whip-Poor-Will	Special Concern	Threatened	Threatened	S1?B	11	49.1 ± 7.0	NS
A	<i>Passerculus sandwichensis princeps</i>	Ipswich Sparrow	Special Concern	Special Concern		S1B	5	90.5 ± 0.0	NS
A	<i>Bucephala islandica</i>	Barrow's Goldeneye	Special Concern	Special Concern		S1N,SUM	50	39.9 ± 0.0	NS
A	<i>Euphagus carolinus</i>	Rusty Blackbird	Special Concern	Special Concern	Endangered	S2B	255	4.6 ± 7.0	NS
A	<i>Phalaropus lobatus</i>	Red-necked Phalarope	Special Concern	Special Concern		S2S3M	12	26.5 ± 0.0	NS
A	<i>Histrionicus histrionicus pop. 1</i>	Harlequin Duck - Eastern population	Special Concern	Special Concern	Endangered	S2S3N,SUM	14	51.6 ± 0.0	NS
A	<i>Chelydra serpentina</i>	Snapping Turtle	Special Concern	Special Concern	Vulnerable	S3	227	14.3 ± 0.0	NS
A	<i>Hirundo rustica</i>	Barn Swallow	Special Concern	Threatened	Endangered	S3B	2200	4.6 ± 7.0	NS
A	<i>Cardellina canadensis</i>	Canada Warbler	Special Concern	Threatened	Endangered	S3B	1224	0.3 ± 0.0	NS
A	<i>Chordeiles minor</i>	Common Nighthawk	Special Concern	Special Concern	Threatened	S3B	470	7.5 ± 7.0	NS
A	<i>Contopus cooperi</i>	Olive-sided Flycatcher	Special Concern	Special Concern	Threatened	S3B	1171	0.6 ± 0.0	NS
A	<i>Dolichonyx oryzivorus</i>	Bobolink	Special Concern	Threatened	Vulnerable	S3B	2892	4.6 ± 7.0	NS
A	<i>Coccythraustes vespertinus</i>	Evening Grosbeak	Special Concern	Special Concern	Vulnerable	S3B,S3N,S3M	892	4.6 ± 7.0	NS
A	<i>Podiceps auritus</i>	Horned Grebe	Special Concern	Special Concern		S3N,SUM	17	14.3 ± 0.0	NS
A	<i>Contopus virens</i>	Eastern Wood-Pewee	Special Concern	Special Concern	Vulnerable	S3S4B	1359	4.6 ± 7.0	NS
A	<i>Phocoena phocoena</i>	Harbour Porpoise	Special Concern			S4	8	47.8 ± 0.0	NS
A	<i>Phocoena phocoena pop. 1</i>	Harbour Porpoise - Northwest Atlantic Population	Special Concern			S4	1	55.0 ± 1.0	NS
A	<i>Chrysemys picta</i>	Painted Turtle	Special Concern	Special Concern		S4	29	41.6 ± 0.0	NS
A	<i>Chrysemys picta picta</i>	Eastern Painted Turtle	Special Concern	Special Concern		S4	202	16.5 ± 0.0	NS
A	<i>Accipiter cooperii</i>	Cooper's Hawk	Not At Risk			S1?B,SUN,SUM	24	14.0 ± 0.0	NS
A	<i>Fulica americana</i>	American Coot	Not At Risk			S1B	81	14.6 ± 3.0	NS
A	<i>Chlidonias niger</i>	Black Tern	Not At Risk			S1B	180	79.1 ± 0.0	NS
A	<i>Falco peregrinus pop. 1</i>	Peregrine Falcon - anatum/tundrius	Not At Risk		Vulnerable	S1B,SUM	149	32.8 ± 0.0	NS
A	<i>Sorex dispar</i>	Long-tailed Shrew	Not At Risk			S2	2	35.4 ± 0.0	NS
A	<i>Aegolius funereus</i>	Boreal Owl	Not At Risk			S2?B,SUM	9	14.1 ± 0.0	NS
A	<i>Globicephala melas</i>	Long-finned Pilot Whale	Not At Risk			S2S3	3	62.7 ± 100.0	NS
A	<i>Hemidactylum scutatum</i>	Four-toed Salamander	Not At Risk			S3	26	20.8 ± 0.0	NS
A	<i>Megaptera novaeangliae</i>	Humpback Whale	Not At Risk			S3	1	86.0 ± 0.0	NS
A	<i>Sterna hirundo</i>	Common Tern	Not At Risk			S3B	508	19.0 ± 0.0	NS
A	<i>Sialia sialis</i>	Eastern Bluebird	Not At Risk			S3B	97	14.9 ± 7.0	NS
A	<i>Buteo lagopus</i>	Rough-legged Hawk	Not At Risk			S3N	25	31.8 ± 0.0	NS
A	<i>Accipiter gentilis</i>	Northern Goshawk	Not At Risk			S3S4	178	7.5 ± 7.0	NS
A	<i>Glaucomys volans</i>	Southern Flying Squirrel	Not At Risk			S3S4	2	48.6 ± 0.0	NS
A	<i>Lagenorhynchus acutus</i>	Atlantic White-sided Dolphin	Not At Risk			S3S4	2	46.2 ± 0.0	NS
A	<i>Ammospiza nelsoni</i>	Nelson's Sparrow	Not At Risk			S3S4B	838	17.1 ± 7.0	NS
A	<i>Calidris canutus rufa</i>	Red Knot rufa subspecies	E,SC	Endangered	Endangered	S2M	275	20.6 ± 0.0	NS
A	<i>Calidris canutus</i>	Red Knot	E,SC	E,T		S2M	12	25.8 ± 0.0	NS
A	<i>Morone saxatilis</i>	Striped Bass	E,SC			S2S3B,S2S3N	33	21.2 ± 0.0	NS
A	<i>Gadus morhua</i>	Atlantic Cod	E,SC,DD			SNR	3	62.3 ± 0.0	NS
A	<i>Salmo salar</i>	Atlantic Salmon	E,T,SC			S1B,S1N	11	18.7 ± 0.0	NS
A	<i>Alces alces americana</i>	Moose			Endangered	S1	219	8.2 ± 0.0	NS
A	<i>Alces alces</i>	Moose				S1	14	17.8 ± 0.0	NS
A	<i>Picoides dorsalis</i>	American Three-toed Woodpecker				S1?	5	54.3 ± 0.0	NS
A	<i>Uria aalge</i>	Common Murre				S1?B	4	92.5 ± 0.0	NS
A	<i>Passerina cyanea</i>	Indigo Bunting				S1?B,SUM	26	15.5 ± 0.0	NS
A	<i>Nycticorax nycticorax</i>	Black-crowned Night-heron				S1B	1	90.9 ± 1.0	NB
A	<i>Oxyura jamaicensis</i>	Ruddy Duck				S1B	73	14.8 ± 0.0	NS

Taxonomic Group	Scientific Name	Common Name	COSEWIC	SARA	Prov Legal Prot	Prov Rarity Rank	# recs	Distance (km)	Prov
A	<i>Gallinula galeata</i>	Common Gallinule				S1B	48	20.3 ± 7.0	NS
A	<i>Myiarchus crinitus</i>	Great Crested Flycatcher				S1B	25	14.8 ± 7.0	NS
A	<i>Cistothorus palustris</i>	Marsh Wren				S1B	54	74.9 ± 3.0	NB
A	<i>Mimus polyglottos</i>	Northern Mockingbird				S1B	96	17.5 ± 0.0	NS
A	<i>Toxostoma rufum</i>	Brown Thrasher				S1B	12	17.1 ± 7.0	NS
A	<i>Charadrius semipalmatus</i>	Semipalmated Plover				S1B,S4M	1497	20.3 ± 7.0	NS
A	<i>Calidris minutilla</i>	Least Sandpiper				S1B,S4M	875	20.6 ± 0.0	NS
A	<i>Anas acuta</i>	Northern Pintail				S1B,SUM	147	19.2 ± 0.0	NS
A	<i>Vireo gilvus</i>	Warbling Vireo				S1B,SUM	35	13.6 ± 7.0	NS
A	<i>Vespertilionidae sp.</i>	bat species				S1S2	115	13.4 ± 0.0	NS
A	<i>Pooecetes gramineus</i>	Vesper Sparrow				S1S2B,SUM	72	7.5 ± 7.0	NS
A	<i>Vireo philadelphicus</i>	Philadelphia Vireo				S2?B,SUM	114	6.8 ± 0.0	NS
A	<i>Alca torda</i>	Razorbill				S2B	3	73.5 ± 2.0	NS
A	<i>Fratercula arctica</i>	Atlantic Puffin				S2B	1	76.5 ± 0.0	NB
A	<i>Empidonax traillii</i>	Willow Flycatcher				S2B	51	14.8 ± 7.0	NS
A	<i>Molothrus ater</i>	Brown-headed Cowbird				S2B	248	14.9 ± 7.0	NS
A	<i>Spatula clypeata</i>	Northern Shoveler				S2B,SUM	273	17.9 ± 0.0	NS
A	<i>Mareca strepera</i>	Gadwall				S2B,SUM	442	22.6 ± 0.0	NS
A	<i>Piranga olivacea</i>	Scarlet Tanager				S2B,SUM	25	21.8 ± 0.0	NS
A	<i>Calidris alba</i>	Sanderling				S2N,S3M	815	17.9 ± 0.0	NS
A	<i>Martes americana</i>	American Marten			Endangered	S2S3	1	96.2 ± 0.0	NS
A	<i>Asio otus</i>	Long-eared Owl				S2S3	31	18.1 ± 0.0	NS
A	<i>Rallus limicola</i>	Virginia Rail				S2S3B	269	23.5 ± 7.0	NS
A	<i>Rissa tridactyla</i>	Black-legged Kittiwake				S2S3B	4	4.5 ± 0.0	NS
A	<i>Petrochelidon pyrrhonota</i>	Cliff Swallow				S2S3B	458	4.6 ± 7.0	NS
A	<i>Phalacrocorax carbo</i>	Great Cormorant				S2S3B,S2S3N	125	17.9 ± 0.0	NS
A	<i>Cathartes aura</i>	Turkey Vulture				S2S3B,S4S5M	108	23.1 ± 0.0	NS
A	<i>Setophaga pinus</i>	Pine Warbler				S2S3B,S4S5M	79	8.2 ± 0.0	NS
A	<i>Bucephala clangula</i>	Common Goldeneye				S2S3B,S5N,S5M	288	24.9 ± 9.0	NS
A	<i>Icterus galbula</i>	Baltimore Oriole				S2S3B,SUM	94	18.6 ± 0.0	NS
A	<i>Pluvialis dominica</i>	American Golden-Plover				S2S3M	134	30.9 ± 0.0	NS
A	<i>Numenius phaeopus</i>	Whimbrel				S2S3M	10	47.6 ± 0.0	NS
A	<i>Numenius phaeopus hudsonicus</i>	Whimbrel				S2S3M	148	26.8 ± 0.0	NS
A	<i>Phalaropus fulicarius</i>	Red Phalarope				S2S3M	2	97.7 ± 0.0	NS
A	<i>Perisoreus canadensis</i>	Canada Jay				S3	676	4.6 ± 7.0	NS
A	<i>Poecile hudsonicus</i>	Boreal Chickadee				S3	872	0.9 ± 0.0	NS
A	<i>Spinus pinus</i>	Pine Siskin				S3	636	4.6 ± 7.0	NS
A	<i>Salvelinus fontinalis</i>	Brook Trout				S3	112	8.7 ± 0.0	NS
A	<i>Salvelinus namaycush</i>	Lake Trout				S3	2	60.2 ± 0.0	NS
A	<i>Sorex maritimensis</i>	Maritime Shrew				S3	107	90.4 ± 1.0	NB
A	<i>Synaptomys cooperi</i>	Southern Bog Lemming				S3	1	93.0 ± 0.0	NS
A	<i>Pekania pennanti</i>	Fisher				S3	12	18.9 ± 0.0	NS
A	<i>Calcarius lapponicus</i>	Lapland Longspur				S3?N,SUM	46	53.5 ± 0.0	NS
A	<i>Spatula discors</i>	Blue-winged Teal				S3B	580	14.8 ± 7.0	NS
A	<i>Charadrius vociferus</i>	Killdeer				S3B	1011	7.5 ± 7.0	NS
A	<i>Tringa semipalmata</i>	Willet				S3B	1631	19.2 ± 0.0	NS
A	<i>Sterna paradisaea</i>	Arctic Tern				S3B	21	79.5 ± 0.0	NB
A	<i>Coccyzus erythrophthalmus</i>	Black-billed Cuckoo				S3B	144	14.8 ± 7.0	NS
A	<i>Tyrannus tyrannus</i>	Eastern Kingbird				S3B	507	4.6 ± 7.0	NS
A	<i>Pheucticus ludovicianus</i>	Rose-breasted Grosbeak				S3B	921	4.6 ± 7.0	NS
A	<i>Alosa pseudoharengus</i>	Alewife				S3B	38	20.0 ± 0.0	NS
A	<i>Somateria mollissima</i>	Common Eider				S3B,S3M,S3N	365	24.9 ± 9.0	NS
A	<i>Tringa melanoleuca</i>	Greater Yellowlegs				S3B,S4M	2257	17.8 ± 0.0	NS
A	<i>Falco sparverius</i>	American Kestrel				S3B,S4S5M	651	4.6 ± 7.0	NS
A	<i>Gallinago delicata</i>	Wilson's Snipe				S3B,S5M	1417	4.6 ± 7.0	NS
A	<i>Setophaga striata</i>	Blackpoll Warbler				S3B,S5M	124	7.5 ± 7.0	NS
A	<i>Cardellina pusilla</i>	Wilson's Warbler				S3B,S5M	132	14.9 ± 7.0	NS

Taxonomic Group	Scientific Name	Common Name	COSEWIC	SARA	Prov Legal Prot	Prov Rarity Rank	# recs	Distance (km)	Prov
A	<i>Pinicola enucleator</i>	Pine Grosbeak				S3B,S5N,S5M	148	4.6 ± 7.0	NS
A	<i>Setophaga tigrina</i>	Cape May Warbler				S3B,SUM	378	13.2 ± 0.0	NS
A	<i>Branta bernicla</i>	Brant				S3M	16	57.8 ± 0.0	NS
A	<i>Pluvialis squatarola</i>	Black-bellied Plover				S3M	1456	18.0 ± 0.0	NS
A	<i>Arenaria interpres</i>	Ruddy Turnstone				S3M	540	23.0 ± 0.0	NS
A	<i>Calidris pusilla</i>	Semipalmated Sandpiper				S3M	1729	20.6 ± 0.0	NS
A	<i>Calidris melanotos</i>	Pectoral Sandpiper				S3M	345	23.0 ± 0.0	NS
A	<i>Limnodromus griseus</i>	Short-billed Dowitcher				S3M	1096	20.6 ± 0.0	NS
A	<i>Chroicocephalus ridibundus</i>	Black-headed Gull				S3N	34	47.7 ± 0.0	NS
A	<i>Picoides arcticus</i>	Black-backed Woodpecker				S3S4	194	4.6 ± 7.0	NS
A	<i>Loxia curvirostra</i>	Red Crossbill				S3S4	198	7.5 ± 7.0	NS
A	<i>Sorex albibarbis</i>	Eastern Water Shrew				S3S4	5	75.0 ± 0.0	PE
A	<i>Botaurus lentiginosus</i>	American Bittern				S3S4B,S4S5M	1081	7.5 ± 7.0	NS
A	<i>Setophaga castanea</i>	Bay-breasted Warbler				S3S4B,S4S5M	734	4.6 ± 7.0	NS
A	<i>Actitis macularius</i>	Spotted Sandpiper				S3S4B,S5M	1027	7.5 ± 7.0	NS
A	<i>Leiothlypis peregrina</i>	Tennessee Warbler				S3S4B,S5M	709	4.6 ± 7.0	NS
A	<i>Passerella iliaca</i>	Fox Sparrow				S3S4B,S5M	56	37.3 ± 7.0	NS
A	<i>Mergus serrator</i>	Red-breasted Merganser				S3S4B,S5M,S5N	297	17.9 ± 0.0	NS
A	<i>Calidris maritima</i>	Purple Sandpiper				S3S4N	61	49.3 ± 0.0	NS
A	<i>Lanius borealis</i>	Northern Shrike				S3S4N	10	74.7 ± 0.0	NS
A	<i>Morus bassanus</i>	Northern Gannet				SHB	96	32.1 ± 4.0	NS
A	<i>Aythya americana</i>	Redhead				SHB	17	45.3 ± 0.0	NS
A	<i>Leucophaeus atricilla</i>	Laughing Gull				SHB	11	77.6 ± 0.0	NB
A	<i>Progne subis</i>	Purple Martin				SHB	24	49.1 ± 7.0	NS
A	<i>Eremophila alpestris</i>	Horned Lark				SHB,S4S5N,S5M	49	15.8 ± 0.0	NS
I	<i>Bombus bohemicus</i>	Ashton Cuckoo Bumble Bee	Endangered	Endangered	Endangered	S1	32	17.3 ± 5.0	NS
I	<i>Danaus plexippus</i>	Monarch	Endangered	Special Concern	Endangered	S2?B,S3M	460	13.7 ± 0.0	NS
I	<i>Danaus plexippus plexippus</i>	Monarch	Endangered	Special Concern		S2?B,S3M	1	85.4 ± 0.0	NS
I	<i>Barnea truncata</i>	Atlantic Mud-piddock	Threatened	Threatened		S1	10	42.0 ± 1.0	NS
I	<i>Bombus suckleyi</i>	Suckley's Cuckoo Bumble Bee	Threatened			SH	4	18.2 ± 5.0	NS
I	<i>Alasmidonta varicosa</i>	Brook Floater	Special Concern	Special Concern	Threatened	S3	16	23.7 ± 0.0	NS
I	<i>Bombus terricola</i>	Yellow-banded Bumble Bee	Special Concern	Special Concern	Vulnerable	S3	175	12.8 ± 0.0	NS
I	<i>Coccinella transversoguttata richardsoni</i>	Transverse Lady Beetle	Special Concern		Endangered	SH	9	11.4 ± 2.0	NS
I	<i>Gomphurus ventricosus</i>	Skillet Clubtail	Special Concern	Endangered		SH	2	69.3 ± 0.0	NS
I	<i>Erora laeta</i>	Early Hairstreak				S1	1	75.9 ± 0.0	PE
I	<i>Pachydiplax longipennis</i>	Blue Dasher				S1	11	94.3 ± 0.0	NS
I	<i>Atlanticoncha ochracea</i>	Tidewater Mucket				S1	29	69.5 ± 0.0	NS
I	<i>Polygonia comma</i>	Eastern Comma				S1?	3	97.4 ± 0.0	NS
I	<i>Polygonia satyrus</i>	Satyr Comma				S1?	24	17.1 ± 5.0	NS
I	<i>Euphyes bimacula</i>	Two-spotted Skipper				S1S2	3	61.3 ± 0.0	NS
I	<i>Boloria chariclea</i>	Arctic Fritillary				S1S2	8	7.1 ± 2.0	NS
I	<i>Somatochlora brevicincta</i>	Quebec Emerald				S1S2	2	82.7 ± 1.0	NS
I	<i>Tharsalea dospassosi</i>	Maritime Copper				S2	105	22.5 ± 0.0	NS
I	<i>Satyrrium acadica</i>	Acadian Hairstreak				S2	17	13.5 ± 0.0	NS
I	<i>Neurocordulia michaeli</i>	Broad-tailed Shadowdragon				S2	21	60.6 ± 0.0	NS
I	<i>Coenagrion resolutum</i>	Taiga Bluet				S2	55	26.9 ± 0.0	NS
I	<i>Margaritifera margaritifera</i>	Eastern Pearlshell				S2	160	13.7 ± 0.0	NS
I	<i>Pantala hymenaea</i>	Spot-Winged Glider				S2?B	2	82.7 ± 1.0	NS
I	<i>Nymphalis l-album</i>	Compton Tortoiseshell				S2S3	13	11.4 ± 2.0	NS
I	<i>Aglais milberti</i>	Milbert's Tortoiseshell				S2S3	20	14.3 ± 2.0	NS
I	<i>Aglais milberti milberti</i>	Milbert's Tortoise Shell				S2S3	4	36.3 ± 0.0	NS
I	<i>Lanthus vernalis</i>	Southern Pygmy Clubtail				S2S3	7	75.2 ± 0.0	NS
I	<i>Somatochlora kennedyi</i>	Kennedy's Emerald				S2S3	5	78.4 ± 0.0	NS
I	<i>Somatochlora williamsoni</i>	Williamson's Emerald				S2S3	13	79.7 ± 0.0	NB
I	<i>Williamsonia fletcheri</i>	Ebony Boghaunter				S2S3	11	29.7 ± 0.0	NS
I	<i>Stylurus scudderii</i>	Zebra Clubtail				S2S3	4	64.5 ± 1.0	NS

Taxonomic Group	Scientific Name	Common Name	COSEWIC	SARA	Prov Legal Prot	Prov Rarity Rank	# recs	Distance (km)	Prov
I	<i>Alasmidonia undulata</i>	Triangle Floater				S2S3	34	33.2 ± 0.0	NS
I	<i>Astyleiopus variegatus</i>	Variiegated Long-horned Beetle				S3	1	76.1 ± 0.0	NS
I	<i>Strophiona nitens</i>	Chestnut Bark Long-horned Beetle				S3	1	99.3 ± 0.0	NS
I	<i>Psephenus herricki</i>	Herrick's Water Penny Beetle				S3	1	37.0 ± 0.0	NS
I	<i>Carabus serratus</i>	Serrated Ground Beetle				S3	1	21.4 ± 0.0	NS
I	<i>Hippodamia parenthesis</i>	Parenthesis Lady Beetle				S3	2	96.0 ± 0.0	NB
I	<i>Chrysochus auratus</i>	Dogbane Leaf Beetle				S3	3	48.6 ± 3.0	NS
I	<i>Naemia seriata</i>	Seaside Lady Beetle				S3	35	87.4 ± 0.0	NB
I	<i>Chilocorus stigma</i>	Twice-stabbed Lady Beetle				S3	6	13.8 ± 0.0	NS
I	<i>Myzia pullata</i>	Streaked Lady Beetle				S3	6	89.5 ± 0.0	NB
I	<i>Iphthiminus opacus</i>	Cloudy Darkling Beetle				S3	1	78.3 ± 0.0	PE
I	<i>Monochamus marmorator</i>	Balsam Fir Sawyer				S3	2	67.4 ± 0.0	NS
I	<i>Trachysida aspera</i>	Rough Flower Longhorn Beetle				S3	1	93.9 ± 0.0	NS
I	<i>Dicerca tuberculata</i>	Swollen Jewel Beetle				S3	1	97.0 ± 9.0	NS
I	<i>Astylopsis sexguttata</i>	Six-speckled Long-horned Beetle				S3	2	84.8 ± 0.0	NS
I	<i>Satyrrium calanus</i>	Banded Hairstreak				S3	12	18.2 ± 2.0	NS
I	<i>Callophrys lanoraieensis</i>	Bog Elfin				S3	18	40.2 ± 0.0	NS
I	<i>Strymon melinus</i>	Gray Hairstreak				S3	1	72.2 ± 2.0	NS
I	<i>Phanogomphus descriptus</i>	Harpoon Clubtail				S3	4	33.7 ± 1.0	NS
I	<i>Ophiogomphus aspersus</i>	Brook Snaketail				S3	5	50.4 ± 0.0	NS
I	<i>Ophiogomphus mainensis</i>	Maine Snaketail				S3	16	56.4 ± 0.0	NS
I	<i>Ophiogomphus rupinsulensis</i>	Rusty Snaketail				S3	41	65.2 ± 0.0	NS
I	<i>Epitheca princeps</i>	Prince Baskettail				S3	18	29.7 ± 0.0	NS
I	<i>Somatochlora forcipata</i>	Forcinate Emerald				S3	2	88.8 ± 1.0	PE
I	<i>Enallagma vernale</i>	Vernal Bluet				S3	6	33.7 ± 1.0	NS
I	<i>Strophitus undulatus</i>	Creeper				S3	6	52.5 ± 1.0	NS
I	<i>Polygonia interrogationis</i>	Question Mark				S3B	113	16.8 ± 0.0	NS
I	<i>Cecropterus pylades</i>	Northern Cloudywing				S3S4	24	13.5 ± 0.0	NS
I	<i>Amblyscirtes hegon</i>	Pepper and Salt Skipper				S3S4	25	6.6 ± 1.0	NS
I	<i>Cupido comyntas</i>	Eastern Tailed Blue				S3S4	13	13.5 ± 0.0	NS
I	<i>Argynnis aphrodite</i>	Aphrodite Fritillary				S3S4	33	13.5 ± 0.0	NS
I	<i>Polygonia faunus</i>	Green Comma				S3S4	20	17.7 ± 0.0	NS
I	<i>Oeneis jutta</i>	Jutta Arctic				S3S4	26	58.7 ± 0.0	NS
I	<i>Aeshna clepsydra</i>	Mottled Darner				S3S4	8	66.6 ± 1.0	NS
I	<i>Aeshna constricta</i>	Lance-Tipped Darner				S3S4	44	17.8 ± 1.0	NS
I	<i>Boyeria grafiana</i>	Ocellated Darner				S3S4	9	27.4 ± 0.0	NS
I	<i>Gomphaeschna furcillata</i>	Harlequin Darner				S3S4	15	46.8 ± 0.0	NS
I	<i>Somatochlora franklini</i>	Delicate Emerald				S3S4	9	35.3 ± 1.0	NS
I	<i>Erythrodiplax berenice</i>	Seaside Dragonlet				S3S4	6	71.5 ± 0.0	NS
I	<i>Nannothemis bella</i>	Elfin Skimmer				S3S4	28	36.2 ± 0.0	NS
I	<i>Sympetrum danae</i>	Black Meadowhawk				S3S4	5	78.7 ± 1.0	PE
I	<i>Enallagma vesperum</i>	Vesper Bluet				S3S4	1	73.4 ± 0.0	NS
I	<i>Amphiagrion saucium</i>	Eastern Red Damsel				S3S4	3	17.8 ± 1.0	NS
I	<i>Sphaerophoria pyrrhina</i>	Violaceous Globetail				SH	1	19.9 ± 5.0	NS
I	<i>Icaricia saepiolus</i>	Greenish Blue				SH	3	20.0 ± 5.0	NS
I	<i>Polygonia gracilis</i>	Hoary Comma				SH	2	18.1 ± 2.0	NS
N	<i>Erioderma mollissimum</i>	Graceful Felt Lichen	Endangered	Endangered	Endangered	S1	26	69.6 ± 0.0	NS
N	<i>Erioderma pedicellatum</i> (Atlantic pop.)	Boreal Felt Lichen - Atlantic pop.	Endangered	Endangered	Endangered	S1	449	65.8 ± 0.0	NS
N	<i>Peltigera hydrothyria</i>	Eastern Waterfan	Threatened	Threatened	Threatened	S1	145	14.4 ± 0.0	NS
N	<i>Pannaria lurida</i>	Wrinkled Shingle Lichen	Threatened	Threatened	Threatened	S2S3	31	53.0 ± 0.0	NS
N	<i>Anzia colpodes</i>	Black-foam Lichen	Threatened	Threatened	Threatened	S3	37	49.7 ± 0.0	NS
N	<i>Fuscopannaria leucosticta</i>	White-rimmed Shingle	Threatened			S3	8	64.7 ± 0.0	NS

Taxonomic Group	Scientific Name	Common Name	COSEWIC	SARA	Prov Legal Prot	Prov Rarity Rank	# recs	Distance (km)	Prov
N	<i>Heterodermia squamulosa</i>	Lichen	Threatened			S3	78	74.9 ± 0.0	NS
N	<i>Pectenia plumbea</i>	Scaly Fringe Lichen	Special Concern	Special Concern	Vulnerable	S3	163	11.0 ± 0.0	NS
N	<i>Sclerophora peronella</i> (Atlantic pop.)	Frosted Glass-whiskers (Atlantic population)	Special Concern	Special Concern		S3S4	21	63.8 ± 0.0	NS
N	<i>Pseudevernia cladonia</i>	Ghost Antler Lichen	Not At Risk			S2S3	17	69.7 ± 0.0	NS
N	<i>Fissidens exilis</i>	Pygmy Pocket Moss	Not At Risk			S3	16	30.6 ± 0.0	NS
N	<i>Chaenotheca servitii</i>	Flexuous Golden Stubble	Data Deficient			S1	1	65.8 ± 1.0	NS
N	<i>Aloina brevirostris</i>	Short-Beaked Rigid Screw Moss				S1	2	59.9 ± 0.0	NS
N	<i>Orthotrichum gymnostomum</i>	Aspen Bristle Moss				S1	1	34.3 ± 0.0	NS
N	<i>Sematophyllum demissum</i>	a Moss				S1	1	83.2 ± 2.0	NS
N	<i>Tetradontium brownianum</i>	Little Georgia				S1	1	73.2 ± 0.0	NS
N	<i>Cyрто-hyprnum minutulum</i>	Tiny Cedar Moss				S1	1	66.1 ± 0.0	NS
N	<i>Blennothallia crispa</i>	Crinkled Jelly Lichen				S1	1	69.7 ± 0.0	NS
N	<i>Usnea perplexans</i>	Powdered Beard Lichen				S1	1	81.3 ± 0.0	NS
N	<i>Lathagrium cristatum</i>	Fingered Jelly Lichen				S1	3	84.2 ± 0.0	NS
N	<i>Fuscopannaria praeatermissa</i>	Moss Shingles Lichen				S1	1	89.6 ± 0.0	NS
N	<i>Scytinium schraderi</i>	Wrinkled Jellyskin Lichen				S1	1	37.3 ± 0.0	NS
N	<i>Lichina confinis</i>	Marine Seaweed Lichen				S1	2	95.6 ± 2.0	NS
N	<i>Polychidium muscicola</i>	Eyed Mossthorns				S1	1	51.4 ± 0.0	NS
N	<i>Peltigera lepidophora</i>	Woollybear Lichen				S1	7	61.5 ± 4.0	NS
N	<i>Hypogymnia hultenii</i>	Scaly Pelt Lichen				S1	11	94.7 ± 0.0	NS
N	<i>Calypogeia neogaea</i>	Powdered Honeycomb Lichen				S1?	1	61.2 ± 0.0	NS
N	<i>Jubula pennsylvanica</i>	Common Pouchwort				S1?	1	86.9 ± 0.0	NS
N	<i>Aloina rigida</i>	a liverwort				S1?	5	24.2 ± 0.0	NS
N	<i>Brachythecium erythrorrhizon</i>	Aloe-Like Rigid Screw Moss				S1?	2	99.0 ± 0.0	PE
N	<i>Campylostelium saxicola</i>	Taiga Ragged Moss				S1?	2	75.6 ± 0.0	PE
N	<i>Tortula obtusifolia</i>	a Moss				S1?	2	75.6 ± 0.0	PE
N	<i>Tortula obtusifolia</i>	a Moss				S1?	3	17.7 ± 1.0	NS
N	<i>Didymodon tophaceus</i>	Olive Beard Moss				S1?	2	69.7 ± 4.0	NS
N	<i>Homomallium adnatum</i>	Adnate Hairy-gray Moss				S1?	1	97.2 ± 0.0	NS
N	<i>Paludella squarrosa</i>	Adnate Hairy-gray Moss				S1?	3	78.9 ± 0.0	NS
N	<i>Physcomitrium immersum</i>	Tufted Fen Moss				S1?	1	98.1 ± 0.0	NS
N	<i>Schistostega pennata</i>	a Moss				S1?	2	72.4 ± 0.0	NS
N	<i>Enchylium limosum</i>	Luminous Moss				S1?	3	69.7 ± 4.0	NS
N	<i>Scytinium intermedium</i>	Lime-loving Tarpaper Lichen				S1?	1	69.7 ± 4.0	NS
N	<i>Arrhenopterum heterostichum</i>	Forty-five Jellyskin Lichen				S1S2	2	61.6 ± 1.0	NS
N	<i>Mnium thomsonii</i>	One-sided Groove Moss				S1S2	1	87.8 ± 2.0	NS
N	<i>Plagiothecium latebricola</i>	Thomson's Leafy Moss				S1S2	1	65.0 ± 3.0	NS
N	<i>Platydictya confervoides</i>	Alder Silk Moss				S1S2	1	88.8 ± 0.0	NS
N	<i>Seligeria donniana</i>	a Moss				S1S2	1	73.9 ± 3.0	NS
N	<i>Sematophyllum marylandicum</i>	Donian Beardless Moss				S1S2	2	72.0 ± 6.0	NS
N	<i>Timmia megapolitana</i>	a Moss				S1S2	3	21.3 ± 0.0	NS
N	<i>Tortula mucronifolia</i>	Metropolitan Timmia Moss				S1S2	1	86.6 ± 3.0	NS
N	<i>Pseudotaxiphylllum distichaceum</i>	Mucronate Screw Moss				S1S2	2	67.0 ± 0.0	NS
N	<i>Haplocladium microphyllum</i>	a Moss				S1S2	1	29.1 ± 5.0	NS
N	<i>Enchylium bachmanianum</i>	Tiny-leaved Haplocladium Moss				S1S2	2	84.7 ± 0.0	NS
N	<i>Placidium squamulosum</i>	Bachman's Jelly Lichen				S1S2	1	50.8 ± 6.0	NS
N	<i>Peltigera ponojensis</i>	Limy Soil Stipplescale Lichen				S1S2	1	40.2 ± 0.0	NS
N	<i>Pilophorus cereolus</i>	Pale-bellied Pelt Lichen				S1S2	1	51.1 ± 3.0	NS

Taxonomic Group	Scientific Name	Common Name	COSEWIC	SARA	Prov Legal Prot	Prov Rarity Rank	# recs	Distance (km)	Prov
N	<i>Parmotrema reticulatum</i>	Netted Ruffle Lichen			S1S2		5	92.2 ± 0.0	NS
N	<i>Solorina spongiosa</i>	Blinking Owl Lichen			S1S2		7	95.1 ± 0.0	NS
N	<i>Parmeliella parvula</i>	Poor-man's Shingles Lichen			S1S2		10	71.5 ± 0.0	NS
N	<i>Heterodermia galactophylla</i>	Branching Fringe Lichen			S1S3		2	40.1 ± 0.0	NS
N	<i>Stereocaulon grande</i>	Grand Foam Lichen			S1S3		1	21.2 ± 0.0	NS
N	<i>Stereocaulon intermedium</i>	Pacific Brain Foam Lichen			S1S3		2	95.3 ± 2.0	NS
N	<i>Anacamptodon splachnoides</i>	a Moss			S2		1	65.0 ± 3.0	NS
N	<i>Sphagnum platyphyllum</i>	Flat-leaved Peat Moss			S2		2	79.3 ± 3.0	NS
N	<i>Sphagnum subnitens</i>	Lustrous Peat Moss			S2		1	91.5 ± 2.0	NS
N	<i>Cystocoleus ebeneus</i>	Rockgossamer Lichen			S2		2	98.8 ± 0.0	NS
N	<i>Hypotrachyna catawbiensis</i>	Powder-tipped Antler Lichen			S2		6	79.1 ± 0.0	NS
N	<i>Scytinium imbricatum</i>	Scaly Jellyskin Lichen			S2		1	56.9 ± 4.0	NS
N	<i>Nephroma resupinatum</i>	a lichen			S2		2	83.3 ± 1.0	NS
N	<i>Placynthium flabellosum</i>	Scaly Ink Lichen			S2		1	67.1 ± 17.0	NS
N	<i>Moerckia flotoviana</i>	Flotow's Ruffwort			S2?		1	69.2 ± 0.0	NS
N	<i>Riccardia multifida</i>	Delicate Germanderwort			S2?		2	67.2 ± 0.0	NS
N	<i>Anomodon viticulosus</i>	a Moss			S2?		1	26.0 ± 5.0	NS
N	<i>Weissia muhlenbergiana</i>	a Moss			S2?		4	87.8 ± 1.0	NS
N	<i>Atrichum angustatum</i>	Lesser Smoothcap Moss			S2?		2	13.8 ± 2.0	NS
N	<i>Ptychostomum pendulum</i>	Drooping Bryum			S2?		1	86.5 ± 2.0	NS
N	<i>Drepanocladus polygamus</i>	Polygamous Hook Moss			S2?		4	69.7 ± 4.0	NS
N	<i>Ditrichum rhynchostegium</i>	a Moss			S2?		2	63.7 ± 0.0	PE
N	<i>Kiaeria starkei</i>	Starke's Fork Moss			S2?		1	85.1 ± 10.0	NS
N	<i>Orthotrichum anomalum</i>	Anomalous Bristle Moss			S2?		1	93.9 ± 2.0	NS
N	<i>Philonotis marchica</i>	a Moss			S2?		2	17.0 ± 0.0	NS
N	<i>Platydictya jungermannioides</i>	False Willow Moss			S2?		1	54.5 ± 0.0	NS
N	<i>Saelania glaucescens</i>	Blue Dew Moss			S2?		1	12.1 ± 0.0	NS
N	<i>Cyrtomnium hymenophylloides</i>	Short-pointed Lantern Moss			S2?		2	12.1 ± 0.0	NS
N	<i>Platylomella lescurii</i>	a Moss			S2?		2	18.3 ± 0.0	NS
N	<i>Oxyrrhynchium hians</i>	Light Beaked Moss			S2S3		4	57.8 ± 25.0	NS
N	<i>Platydictya subtilis</i>	Bark Willow Moss			S2S3		2	65.0 ± 3.0	NS
N	<i>Scorpidium revolvens</i>	Limprichtia Moss			S2S3		2	63.4 ± 0.0	NS
N	<i>Moelleropsis nebulosa</i>	Blue-gray Moss Shingle Lichen			S2S3		53	39.1 ± 3.0	NS
N	<i>Moelleropsis nebulosa</i> ssp. <i>frullaniae</i>	Blue-gray Moss Shingle Lichen			S2S3		3	68.1 ± 0.0	NS
N	<i>Ramalina thrausta</i>	Angelhair Ramalina Lichen			S2S3		15	39.1 ± 0.0	NS
N	<i>Collema leptaleum</i>	Crumpled Bat's Wing Lichen			S2S3		85	29.9 ± 0.0	NS
N	<i>Usnea ceratina</i>	Warty Beard Lichen			S2S3		1	61.3 ± 0.0	NS
N	<i>Usnea rubicunda</i>	Red Beard Lichen			S2S3		4	19.5 ± 0.0	NS
N	<i>Ahtiana aurescens</i>	Eastern Candlewax Lichen			S2S3		7	60.1 ± 0.0	NS
N	<i>Usnocetraria oakesiana</i>	Yellow Band Lichen			S2S3		3	80.9 ± 0.0	NS
N	<i>Cladonia incrassata</i>	Powder-foot British Soldiers Lichen			S2S3		1	90.8 ± 0.0	NS
N	<i>Cladonia parasitica</i>	Fence-rail Lichen			S2S3		4	34.2 ± 1.0	NS
N	<i>Scytinium tenuissimum</i>	Birdnest Jellyskin Lichen			S2S3		15	19.6 ± 0.0	NS
N	<i>Melanohalea septentrionalis</i>	Northern Camouflage Lichen			S2S3		2	80.7 ± 0.0	NS
N	<i>Myelochroa aurulenta</i>	Powdery Axil-bristle Lichen			S2S3		2	95.9 ± 0.0	NS
N	<i>Parmelia fertilis</i>	Fertile Shield Lichen			S2S3		10	9.1 ± 0.0	NS
N	<i>Hypotrachyna minarum</i>	Hairless-spined Shield Lichen			S2S3		2	80.3 ± 0.0	NS
N	<i>Parmeliopsis ambigua</i>	Green Starburst Lichen			S2S3		1	46.6 ± 1.0	NS
N	<i>Racodium rupestre</i>	Rockhair Lichen			S2S3		1	90.7 ± 1.0	NS
N	<i>Usnea cavernosa</i>	Pitted Beard Lichen			S2S3		2	81.3 ± 0.0	NS
N	<i>Usnea mutabilis</i>	Bloody Beard Lichen			S2S3		1	81.4 ± 0.0	NS
N	<i>Fuscopannaria soorediata</i>	a Lichen			S2S3		5	76.1 ± 0.0	NS

Taxonomic Group	Scientific Name	Common Name	COSEWIC	SARA	Prov Legal Prot	Prov Rarity Rank	# recs	Distance (km)	Prov
N	<i>Stereocaulon condensatum</i>	Granular Soil Foam Lichen				S2S3	11	31.5 ± 0.0	NS
N	<i>Physcia subtilis</i>	Slender Rosette Lichen				S2S3	1	70.1 ± 0.0	NS
N	<i>Cladonia coccifera</i>	Eastern Boreal Pixie-cup Lichen				S2S3	2	62.0 ± 4.0	NS
N	<i>Cladonia deformis</i>	Lesser Sulphur-cup Lichen				S2S3	3	78.5 ± 0.0	PE
N	<i>Cladonia phyllophora</i>	Felt Lichen				S2S3	1	99.0 ± 0.0	NB
N	<i>Ephemerum serratum</i>	a Moss				S3	4	30.6 ± 0.0	NS
N	<i>Fissidens taxifolius</i>	Yew-leaved Pocket Moss				S3	15	30.6 ± 0.0	NS
N	<i>Anomodon tristis</i>	a Moss				S3	11	87.4 ± 15.0	NS
N	<i>Sphagnum contortum</i>	Twisted Peat Moss				S3	4	61.5 ± 4.0	NS
N	<i>Tetraplodon angustatus</i>	Toothed-leaved Nitrogen Moss				S3	4	75.9 ± 0.0	NS
N	<i>Rostania occultata</i>	Crusted Tarpaper Lichen				S3	4	71.2 ± 0.0	NS
N	<i>Collema nigrescens</i>	Blistered Tarpaper Lichen				S3	22	50.6 ± 2.0	NS
N	<i>Solorina saccata</i>	Woodland Owl Lichen				S3	14	55.7 ± 2.0	NS
N	<i>Fuscopannaria ahlneri</i>	Corrugated Shingles Lichen				S3	80	13.8 ± 0.0	NS
N	<i>Scytinium lichenoides</i>	Tattered Jellyskin Lichen				S3	31	31.5 ± 0.0	NS
N	<i>Leptogium milligranum</i>	Stretched Jellyskin Lichen				S3	11	24.4 ± 0.0	NS
N	<i>Nephroma bellum</i>	Naked Kidney Lichen				S3	16	33.5 ± 0.0	NS
N	<i>Placynthium nigrum</i>	Common Ink Lichen				S3	4	51.6 ± 0.0	NS
N	<i>Platismatia norvegica</i>	Oldgrowth Rag Lichen				S3	1	95.5 ± 0.0	NS
N	<i>Punctelia appalachensis</i>	Appalachian Speckleback Lichen				S3	109	37.9 ± 0.0	NS
N	<i>Viridothelium virens</i>	a lichen				S3	4	78.3 ± 0.0	NS
N	<i>Ephebe lanata</i>	Waterside Rockshag Lichen				S3	2	51.4 ± 0.0	NS
N	<i>Phaeophyscia adiastrata</i>	Powder-tipped Shadow Lichen				S3	4	74.9 ± 0.0	PE
N	<i>Phaeophyscia pusilloides</i>	Pompom-tipped Shadow Lichen				S3	14	31.3 ± 0.0	NS
N	<i>Peltigera collina</i>	Tree Pelt Lichen				S3	13	0.8 ± 0.0	NS
N	<i>Barbula convoluta</i>	Lesser Bird's-claw Beard Moss				S3?	4	67.0 ± 0.0	PE
N	<i>Calliergon giganteum</i>	Giant Spear Moss				S3?	2	83.2 ± 3.0	NS
N	<i>Drummondia prorepens</i>	a Moss				S3?	1	97.8 ± 5.0	NS
N	<i>Elodium blandowii</i>	Blandow's Bog Moss				S3?	5	25.5 ± 3.0	NS
N	<i>Mnium stellare</i>	Star Leafy Moss				S3?	3	61.6 ± 1.0	NS
N	<i>Sphagnum lindbergii</i>	Lindberg's Peat Moss				S3?	1	95.1 ± 0.0	NS
N	<i>Sphagnum riparium</i>	Streamside Peat Moss				S3?	2	76.9 ± 0.0	NS
N	<i>Cladonia stygia</i>	Black-footed Reindeer Lichen				S3?	18	76.4 ± 0.0	NS
N	<i>Anomodon rugelii</i>	Rugel's Anomodon Moss				S3S4	1	89.5 ± 0.0	NS
N	<i>Dichelyma capillaceum</i>	Hairlike Dichelyma Moss				S3S4	1	87.1 ± 3.0	NS
N	<i>Encalypta ciliata</i>	Fringed Extinguisher Moss				S3S4	2	86.6 ± 3.0	NS
N	<i>Encalypta procera</i>	Slender Extinguisher Moss				S3S4	1	73.9 ± 3.0	NS
N	<i>Myurella julacea</i>	Small Mouse-tail Moss				S3S4	1	12.1 ± 0.0	NS
N	<i>Splachnum ampullaceum</i>	Cruet Dung Moss				S3S4	4	78.0 ± 0.0	NS
N	<i>Thamnobryum alleghaniense</i>	a Moss				S3S4	9	47.5 ± 0.0	NS
N	<i>Tomentypnum nitens</i>	Golden Fuzzy Fen Moss				S3S4	4	63.4 ± 0.0	NS
N	<i>Schistidium agassizii</i>	Elf Bloom Moss				S3S4	1	81.3 ± 0.0	NS
N	<i>Hylocomiastrum pyrenaicum</i>	a Feather Moss				S3S4	1	73.9 ± 3.0	NS
N	<i>Bryoria pseudofuscescens</i>	Mountain Horsehair Lichen				S3S4	16	52.6 ± 4.0	NS
N	<i>Enchylium tenax</i>	Soil Tarpaper Lichen				S3S4	12	31.6 ± 0.0	NS
N	<i>Sticta fuliginosa</i>	Peppered Moon Lichen				S3S4	50	30.2 ± 0.0	NS
N	<i>Arctoparmelia incurva</i>	Finger Ring Lichen				S3S4	6	92.2 ± 0.0	NS
N	<i>Scytinium teretiusculum</i>	Curly Jellyskin Lichen				S3S4	12	51.4 ± 0.0	NS
N	<i>Leptogium acadense</i>	Acadian Jellyskin Lichen				S3S4	50	8.6 ± 0.0	NS
N	<i>Scytinium subtile</i>	Appressed Jellyskin Lichen				S3S4	34	36.2 ± 0.0	NS
N	<i>Cladonia floerkeana</i>	Gritty British Soldiers Lichen				S3S4	1	99.2 ± 0.0	NB

Taxonomic Group	Scientific Name	Common Name	COSEWIC	SARA	Prov Legal Prot	Prov Rarity Rank	# recs	Distance (km)	Prov
N	<i>Vahlia leucophaea</i>	Shelter Shingle Lichen				S3S4	17	38.3 ± 0.0	NS
N	<i>Heterodermia speciosa</i>	Powdered Fringe Lichen				S3S4	44	2.3 ± 0.0	NS
N	<i>Leptogium corticola</i>	Blistered Jellyskin Lichen				S3S4	50	47.7 ± 0.0	NS
N	<i>Melanohalea olivacea</i>	Spotted Camouflage Lichen				S3S4	6	45.6 ± 3.0	NS
N	<i>Parmeliopsis hyperopta</i>	Gray Starburst Lichen				S3S4	4	28.5 ± 1.0	NS
N	<i>Parmotrema perlatum</i>	Powdered Ruffle Lichen				S3S4	10	92.1 ± 0.0	NS
N	<i>Peltigera hymenina</i>	Cloudy Pelt Lichen				S3S4	1	89.5 ± 1.0	NS
N	<i>Sphaerophorus fragilis</i>	Fragile Coral Lichen				S3S4	3	92.3 ± 0.0	NS
N	<i>Coccocarpia palmicola</i>	Salted Shell Lichen				S3S4	667	45.1 ± 0.0	NS
N	<i>Physcia tenella</i>	Fringed Rosette Lichen				S3S4	4	63.6 ± 0.0	PE
N	<i>Anaptychia palmulata</i>	Shaggy Fringed Lichen				S3S4	108	2.4 ± 0.0	NS
N	<i>Evernia prunastri</i>	Valley Oakmoss Lichen				S3S4	91	21.8 ± 0.0	NS
N	<i>Heterodermia neglecta</i>	Fringe Lichen				S3S4	68	22.4 ± 0.0	NS
P	<i>Clethra alnifolia</i>	Coast Pepper-Bush	Endangered	Threatened	Vulnerable	S2	1	98.5 ± 0.0	PE
P	<i>Fraxinus nigra</i>	Black Ash	Threatened		Threatened	S1S2	1347	1.4 ± 0.0	NS
P	<i>Lilaeopsis chinensis</i>	Eastern Lilaeopsis	Special Concern	Special Concern	Vulnerable	S3	20	48.0 ± 0.0	NS
P	<i>Isoetes prototypus</i>	Prototype Quillwort	Special Concern	Special Concern	Vulnerable	S3	13	31.1 ± 0.0	NS
P	<i>Floerkea proserpinacoides</i>	False Mermaidweed	Not At Risk			S2S3	1	18.1 ± 7.0	NS
P	<i>Acer saccharinum</i>	Silver Maple				S1	5	78.6 ± 0.0	PE
P	<i>Osmorhiza depauperata</i>	Blunt Sweet Cicely				S1	1	98.4 ± 5.0	NS
P	<i>Andersonglossum boreale</i>	Northern Wild Comfrey				S1	3	84.9 ± 1.0	NS
P	<i>Lobelia spicata</i>	Pale-Spiked Lobelia				S1	13	28.7 ± 7.0	NS
P	<i>Hudsonia tomentosa</i>	Woolly Beach-heath				S1	18	58.2 ± 7.0	NS
P	<i>Callitriche hermaphroditica</i>	Northern Water-starwort				S1	4	95.1 ± 0.0	PE
P	<i>Elatine americana</i>	American Waterwort				S1	2	57.2 ± 0.0	NS
P	<i>Ribes americanum</i>	Wild Black Currant				S1	4	17.7 ± 5.0	NS
P	<i>Utricularia ochroleuca</i>	Yellowish-white Bladderwort				S1	38	80.5 ± 0.0	NS
P	<i>Fraxinus pennsylvanica</i>	Red Ash				S1	12	39.6 ± 0.0	NS
P	<i>Polygonum achoreum</i>	Leathery Knotweed				S1	1	93.0 ± 0.0	NB
P	<i>Persicaria careyi</i>	Carey's Smartweed				S1	1	39.3 ± 3.0	NS
P	<i>Phytolacca americana</i>	Common Pokeweed				S1	2	95.2 ± 0.0	NS
P	<i>Clematis occidentalis</i>	Purple Clematis				S1	3	80.7 ± 0.0	NS
P	<i>Ranunculus pennsylvanicus</i>	Pennsylvania Buttercup				S1	31	28.4 ± 0.0	NS
P	<i>Amelanchier nantucketensis</i>	Nantucket Serviceberry				S1	1	81.0 ± 1.0	NS
P	<i>Salix myrtilifolia</i>	Blueberry Willow				S1	1	59.0 ± 0.0	NS
P	<i>Salix serissima</i>	Autumn Willow				S1	2	59.0 ± 0.0	NS
P	<i>Carex garberi</i>	Garber's Sedge				S1	4	17.7 ± 0.0	NS
P	<i>Carex granularis</i>	Limestone Meadow Sedge				S1	2	81.2 ± 0.0	NS
P	<i>Carex laxiflora</i>	Loose-Flowered Sedge				S1	1	92.5 ± 1.0	NS
P	<i>Carex ormostachya</i>	Necklace Spike Sedge				S1	1	81.4 ± 1.0	NB
P	<i>Carex plantaginea</i>	Plantain-Leaved Sedge				S1	4	14.9 ± 0.0	NS
P	<i>Carex prairea</i>	Prairie Sedge				S1	1	90.0 ± 0.0	PE
P	<i>Carex tenuiflora</i>	Sparse-Flowered Sedge				S1	2	80.7 ± 0.0	NS
P	<i>Carex tincta</i>	Tinged Sedge				S1	4	89.3 ± 0.0	PE
P	<i>Carex viridula var. saxillittoralis</i>	Greenish Sedge				S1	4	96.2 ± 2.0	NS
P	<i>Cyperus lupulinus ssp. macilentus</i>	Hop Flatsedge				S1	4	51.0 ± 0.0	NS
P	<i>Scirpus atrovirens</i>	Dark-green Bulrush				S1	4	42.4 ± 0.0	NS
P	<i>Blysmopsis rufa</i>	Red Bulrush				S1	3	98.5 ± 1.0	PE
P	<i>Elodea nuttallii</i>	Nuttall's Waterweed				S1	2	97.6 ± 1.0	PE
P	<i>Iris prismatica</i>	Slender Blue Flag				S1	1	98.6 ± 1.0	NS
P	<i>Juncus vaseyi</i>	Vasey Rush				S1	4	19.5 ± 0.0	NS
P	<i>Trillium grandiflorum</i>	White Trillium				S1	1	85.5 ± 1.0	PE
P	<i>Malaxis monophyllos var. brachypoda</i>	North American White Adder's-mouth				S1	6	60.6 ± 1.0	NS
P	<i>Calamagrostis stricta ssp. inexpansa</i>	Slim-stemmed Reed Grass				S1	1	89.5 ± 1.0	NB

Taxonomic Group	Scientific Name	Common Name	COSEWIC	SARA	Prov Legal Prot	Prov Rarity Rank	# recs	Distance (km)	Prov
P	<i>Elymus hystrix</i>	Spreading Wild Rye				S1	12	36.5 ± 1.0	NS
P	<i>Adiantum pedatum</i>	Northern Maidenhair Fern				S1	24	17.2 ± 1.0	NS
P	<i>Botrychium lunaria</i>	Common Moonwort				S1	10	98.5 ± 0.0	NS
P	<i>Selaginella rupestris</i>	Rock Spikemoss				S1	1	84.7 ± 0.0	NS
P	<i>Solidago hispida</i>	Hairy Goldenrod				S1?	2	67.6 ± 7.0	NS
P	<i>Suaeda rolandii</i>	Roland's Sea-Blite				S1?	6	52.1 ± 2.0	NS
P	<i>Carex pensylvanica</i>	Pennsylvania Sedge				S1?	3	37.8 ± 3.0	NS
P	<i>Bolboschoenus robustus</i>	Sturdy Bulrush				S1?	2	35.8 ± 7.0	NS
P	<i>Allium schoenoprasum</i>	Wild Chives				S1?	5	69.3 ± 0.0	PE
P	<i>Allium schoenoprasum var. sibiricum</i>	Wild Chives				S1?	1	17.1 ± 7.0	NS
P	<i>Cypripedium arietinum</i>	Ram's-Head Lady's-Slipper			Endangered	S1S2	329	30.1 ± 0.0	NS
P	<i>Sanicula odorata</i>	Clustered Sanicle				S1S2	9	33.0 ± 10.0	NS
P	<i>Draba glabella</i>	Rock Whitlow-Grass				S1S2	2	86.6 ± 0.0	NS
P	<i>Proserpinaca intermedia</i>	Intermediate Mermaidweed				S1S2	1	59.1 ± 0.0	NS
P	<i>Anemone virginiana var. alba</i>	Virginia Anemone				S1S2	5	17.0 ± 5.0	NS
P	<i>Parnassia parviflora</i>	Small-flowered Grass-of-Parnassus				S1S2	1	90.4 ± 1.0	NS
P	<i>Carex haydenii</i>	Hayden's Sedge				S1S2	4	16.6 ± 1.0	NS
P	<i>Platanthera huronensis</i>	Fragrant Green Orchid				S1S2	2	77.9 ± 10.0	NS
P	<i>Calamagrostis stricta ssp. stricta</i>	Slim-stemmed Reed Grass				S1S2	21	73.3 ± 7.0	NS
P	<i>Carex vacillans</i>	Estuarine Sedge				S1S3	5	85.9 ± 0.0	NB
P	<i>Zizia aurea</i>	Golden Alexanders				S2	43	17.0 ± 0.0	NS
P	<i>Antennaria parlinii ssp. fallax</i>	Parlin's Pussytoes				S2	13	26.4 ± 0.0	NS
P	<i>Rudbeckia laciniata</i>	Cut-Leaved Coneflower				S2	31	17.6 ± 3.0	NS
P	<i>Arabis pycnocarpa</i>	Cream-flowered Rockcress				S2	1	65.2 ± 0.0	NS
P	<i>Cardamine maxima</i>	Large Toothwort				S2	2	94.6 ± 0.0	NS
P	<i>Hudsonia ericoides</i>	Pinebarren Golden Heather				S2	2	98.9 ± 5.0	PE
P	<i>Desmodium canadense</i>	Canada Tick-trefoil				S2	20	17.0 ± 0.0	NS
P	<i>Hylodesmum glutinosum</i>	Large Tick-trefoil				S2	8	75.4 ± 0.0	NS
P	<i>Anemonastrum canadense</i>	Canada Anemone				S2	6	17.7 ± 0.0	NS
P	<i>Hepatica americana</i>	Round-lobed Hepatica				S2	70	25.2 ± 0.0	NS
P	<i>Ranunculus sceleratus</i>	Cursed Buttercup				S2	20	90.8 ± 0.0	NS
P	<i>Galium boreale</i>	Northern Bedstraw				S2	10	32.3 ± 5.0	NS
P	<i>Comandra umbellata</i>	Bastard's Toadflax				S2	5	97.3 ± 1.0	NB
P	<i>Gratiola neglecta</i>	Clammy Hedge-Hyssop				S2	22	30.6 ± 2.0	NS
P	<i>Dirca palustris</i>	Eastern Leatherwood				S2	75	48.6 ± 7.0	NS
P	<i>Carex chordorrhiza</i>	Creeping Sedge				S2	56	79.3 ± 0.0	NS
P	<i>Carex gynocrates</i>	Northern Bog Sedge				S2	2	59.0 ± 0.0	NS
P	<i>Carex pellita</i>	Woolly Sedge				S2	12	17.2 ± 0.0	NS
P	<i>Carex livida</i>	Livid Sedge				S2	49	51.6 ± 0.0	NS
P	<i>Juncus greenii</i>	Greene's Rush				S2	7	37.5 ± 1.0	NS
P	<i>Juncus alpinoarticulatus ssp. americanus</i>	Northern Green Rush				S2	3	98.7 ± 3.0	PE
P	<i>Allium tricoccum</i>	Wild Leek				S2	45	15.1 ± 13.0	NS
P	<i>Lilium canadense</i>	Canada Lily				S2	149	11.7 ± 1.0	NS
P	<i>Cypripedium parviflorum var. pubescens</i>	Yellow Lady's-slipper				S2	27	43.4 ± 7.0	NS
P	<i>Cypripedium parviflorum var. makasin</i>	Small Yellow Lady's-Slipper				S2	9	83.7 ± 0.0	NS
P	<i>Cypripedium reginae</i>	Showy Lady's-Slipper				S2	76	40.0 ± 0.0	NS
P	<i>Platanthera flava var. flava</i>	Southern Rein Orchid				S2	1	95.5 ± 7.0	NS
P	<i>Platanthera flava var. herbiola</i>	Pale Green Orchid				S2	11	17.0 ± 1.0	NS
P	<i>Platanthera macrophylla</i>	Large Round-Leaved Orchid				S2	17	6.1 ± 1.0	NS
P	<i>Bromus latiglumis</i>	Broad-Glumed Brome				S2	33	33.5 ± 0.0	NS

Taxonomic Group	Scientific Name	Common Name	COSEWIC	SARA	Prov Legal Prot	Prov Rarity Rank	# recs	Distance (km)	Prov
P	<i>Cinna arundinacea</i>	Sweet Wood Reed Grass				S2	19	36.3 ± 0.0	NS
P	<i>Elymus wiegandii</i>	Wiegand's Wild Rye				S2	21	26.0 ± 0.0	NS
P	<i>Festuca subverticillata</i>	Nodding Fescue				S2	13	42.5 ± 1.0	NS
P	<i>Cryptogramma stelleri</i>	Steller's Rockbrake				S2	3	50.7 ± 0.0	NS
P	<i>Cuscuta cephalanthi</i>	Buttonbush Dodder				S2?	2	43.5 ± 1.0	NS
P	<i>Rumex persicarioides</i>	Peach-leaved Dock				S2?	3	75.8 ± 5.0	PE
P	<i>Crataegus submollis</i>	Quebec Hawthorn				S2?	7	23.0 ± 5.0	NS
P	<i>Carex peckii</i>	White-Tinged Sedge				S2?	4	12.4 ± 0.0	NS
P	<i>Thuja occidentalis</i>	Eastern White Cedar			Vulnerable	S2S3	964	38.6 ± 0.0	NS
P	<i>Osmorhiza longistylis</i>	Smooth Sweet Cicely				S2S3	31	18.4 ± 5.0	NS
P	<i>Bidens hyperborea</i>	Estuary Beggarticks				S2S3	2	48.6 ± 0.0	NS
P	<i>Erigeron philadelphicus</i>	Philadelphia Fleabane				S2S3	8	50.4 ± 5.0	NS
P	<i>Lactuca hirsuta</i>	Hairy Lettuce				S2S3	5	78.6 ± 5.0	PE
P	<i>Impatiens pallida</i>	Pale Jewelweed				S2S3	3	31.1 ± 0.0	NS
P	<i>Caulophyllum thalictroides</i>	Blue Cohosh				S2S3	101	17.5 ± 0.0	NS
P	<i>Draba arabisans</i>	Rock Whitlow-Grass				S2S3	13	78.4 ± 0.0	NS
P	<i>Boechera stricta</i>	Drummond's Rockcress				S2S3	12	14.0 ± 1.0	NS
P	<i>Stellaria humifusa</i>	Saltmarsh Starwort				S2S3	5	61.8 ± 1.0	NS
P	<i>Oxybasis rubra</i>	Red Goosefoot				S2S3	6	47.6 ± 0.0	NS
P	<i>Hypericum majus</i>	Large St John's-wort				S2S3	21	30.0 ± 0.0	NS
P	<i>Hypericum x dissimulatum</i>	Disguised St. John's-wort				S2S3	8	32.7 ± 1.0	NS
P	<i>Empetrum atropurpureum</i>	Purple Crowberry				S2S3	3	98.8 ± 5.0	PE
P	<i>Euphorbia polygonifolia</i>	Seaside Spurge				S2S3	6	63.1 ± 1.0	PE
P	<i>Myriophyllum farwellii</i>	Farwell's Water Milfoil				S2S3	13	34.9 ± 1.0	NS
P	<i>Hedeoma pulegioides</i>	American False Pennyroyal				S2S3	11	34.5 ± 1.0	NS
P	<i>Oenothera fruticosa</i> ssp. <i>tetragona</i>	Narrow-leaved Evening Primrose				S2S3	6	17.1 ± 7.0	NS
P	<i>Polygonum aviculare</i> ssp. <i>buxiforme</i>	Box Knotweed				S2S3	7	17.1 ± 7.0	NS
P	<i>Polygonum oxyspermum</i> ssp. <i>raii</i>	Ray's Knotweed				S2S3	2	98.4 ± 5.0	PE
P	<i>Polygonum oxyspermum</i>	Sharp-fruit Knotweed				S2S3	1	91.3 ± 0.0	NS
P	<i>Rumex triangulivalvis</i>	Triangular-valve Dock				S2S3	7	29.5 ± 0.0	NS
P	<i>Primula mistassinica</i>	Mistassini Primrose				S2S3	17	17.0 ± 0.0	NS
P	<i>Anemone quinquefolia</i>	Wood Anemone				S2S3	19	28.7 ± 0.0	NS
P	<i>Caltha palustris</i>	Yellow Marsh Marigold				S2S3	98	46.0 ± 0.0	NS
P	<i>Amelanchier fernaldii</i>	Fernald's Serviceberry				S2S3	1	61.7 ± 5.0	NS
P	<i>Potentilla canadensis</i>	Canada Cinquefoil				S2S3	4	34.4 ± 5.0	NS
P	<i>Galium obtusum</i>	Blunt-leaved Bedstraw				S2S3	1	81.4 ± 1.0	NB
P	<i>Salix pellita</i>	Satiny Willow				S2S3	8	32.9 ± 7.0	NS
P	<i>Tiarella cordifolia</i>	Heart-leaved Foamflower				S2S3	223	9.2 ± 0.0	NS
P	<i>Agalinis purpurea</i> var. <i>parviflora</i>	Small-flowered Purple False Foxglove				S2S3	28	27.1 ± 0.0	NS
P	<i>Boehmeria cylindrica</i>	Small-spike False-nettle				S2S3	3	60.5 ± 0.0	NS
P	<i>Carex adusta</i>	Lesser Brown Sedge				S2S3	5	14.9 ± 7.0	NS
P	<i>Carex capillaris</i>	Hairlike Sedge				S2S3	2	66.3 ± 0.0	NS
P	<i>Carex comosa</i>	Bearded Sedge				S2S3	22	14.9 ± 7.0	NS
P	<i>Carex houghtoniana</i>	Houghton's Sedge				S2S3	5	37.7 ± 1.0	NS
P	<i>Carex hystericina</i>	Porcupine Sedge				S2S3	9	29.5 ± 0.0	NS
P	<i>Eleocharis ovata</i>	Ovate Spikerush				S2S3	12	12.0 ± 0.0	NS
P	<i>Scirpus pedicellatus</i>	Stalked Bulrush				S2S3	7	37.8 ± 0.0	NS
P	<i>Vallisneria americana</i>	Wild Celery				S2S3	9	34.6 ± 1.0	NS
P	<i>Najas gracillima</i>	Thread-Like Naiad				S2S3	2	83.1 ± 0.0	NS
P	<i>Goodyera pubescens</i>	Downy Rattlesnake-Plantain				S2S3	14	44.2 ± 0.0	NS
P	<i>Spiranthes casei</i> var. <i>novaescotiae</i>	Case's Ladies'-Tresses				S2S3	1	46.2 ± 0.0	NS
P	<i>Spiranthes lucida</i>	Shining Ladies'-Tresses				S2S3	27	17.0 ± 0.0	NS
P	<i>Calamagrostis stricta</i>	Slim-stemmed Reed Grass				S2S3	6	80.4 ± 0.0	NS

Taxonomic Group	Scientific Name	Common Name	COSEWIC	SARA	Prov Legal Prot	Prov Rarity Rank	# recs	Distance (km)	Prov
P	<i>Potamogeton friesii</i>	Fries' Pondweed				S2S3	16	17.8 ± 5.0	NS
P	<i>Woodsia glabella</i>	Smooth Cliff Fern				S2S3	2	26.7 ± 1.0	NS
P	<i>Botrychium lanceolatum</i> ssp. <i>angustisegmentum</i>	Narrow Triangle Moonwort				S2S3	12	20.5 ± 1.0	NS
P	<i>Botrychium simplex</i>	Least Moonwort				S2S3	5	50.9 ± 0.0	NS
P	<i>Ophioglossum pusillum</i>	Northern Adder's-tongue				S2S3	7	19.0 ± 0.0	NS
P	<i>Potamogeton pulcher</i>	Spotted Pondweed			Vulnerable	S3	3	51.1 ± 2.0	NS
P	<i>Angelica atropurpurea</i>	Purple-stemmed Angelica				S3	9	37.6 ± 0.0	NS
P	<i>Conioselinum chinense</i>	Chinese Hemlock-parsley				S3	7	29.6 ± 5.0	NS
P	<i>Hieracium robinsonii</i>	Robinson's Hawkweed				S3	3	17.3 ± 7.0	NS
P	<i>Iva frutescens</i>	Big-leaved Marsh-elder				S3	50	81.3 ± 0.0	NS
P	<i>Senecio pseudoarnica</i>	Seabeach Ragwort				S3	22	17.1 ± 7.0	NS
P	<i>Symphyotrichum boreale</i>	Boreal Aster				S3	32	17.1 ± 7.0	NS
P	<i>Symphyotrichum undulatum</i>	Wavy-leaved Aster				S3	7	84.4 ± 0.0	NS
P	<i>Symphyotrichum ciliolatum</i>	Fringed Blue Aster				S3	23	37.4 ± 0.0	NS
P	<i>Betula michauxii</i>	Michaux's Dwarf Birch				S3	31	58.6 ± 0.0	NS
P	<i>Betula pumila</i>	Bog Birch				S3	21	59.5 ± 0.0	NS
P	<i>Cardamine parviflora</i>	Small-flowered Bittercress				S3	9	86.5 ± 0.0	NS
P	<i>Palustricodon aparinoides</i>	Marsh Bellflower				S3	43	12.2 ± 0.0	NS
P	<i>Mononeuria groenlandica</i>	Greenland Stitchwort				S3	12	71.1 ± 0.0	NS
P	<i>Sagina nodosa</i>	Knotted Pearlwort				S3	9	94.1 ± 1.0	NS
P	<i>Sagina nodosa</i> ssp. <i>borealis</i>	Knotted Pearlwort				S3	9	95.8 ± 0.0	NS
P	<i>Stellaria longifolia</i>	Long-leaved Starwort				S3	19	16.5 ± 0.0	NS
P	<i>Ceratophyllum echinatum</i>	Prickly Hornwort				S3	38	19.4 ± 0.0	NS
P	<i>Triosteum aurantiacum</i>	Orange-fruited Tinker's Weed				S3	93	9.3 ± 0.0	NS
P	<i>Viburnum edule</i>	Squashberry				S3	3	24.6 ± 0.0	NS
P	<i>Crassula aquatica</i>	Water Pygmyweed				S3	2	98.4 ± 5.0	PE
P	<i>Empetrum eamesii</i>	Pink Crowberry				S3	6	70.9 ± 5.0	PE
P	<i>Geranium bicknellii</i>	Bicknell's Crane's-bill				S3	11	30.5 ± 2.0	NS
P	<i>Myriophyllum verticillatum</i>	Whorled Water Milfoil				S3	12	39.6 ± 0.0	NS
P	<i>Epilobium strictum</i>	Downy Willowherb				S3	56	17.9 ± 5.0	NS
P	<i>Polygala sanguinea</i>	Blood Milkwort				S3	36	13.3 ± 1.0	NS
P	<i>Persicaria arifolia</i>	Halberd-leaved Tearthumb				S3	90	24.7 ± 0.0	NS
P	<i>Plantago rugelii</i>	Rugel's Plantain				S3	8	17.1 ± 7.0	NS
P	<i>Primula laurentiana</i>	Laurentian Primrose				S3	7	92.7 ± 0.0	NS
P	<i>Samolus parviflorus</i>	Seaside Brookweed				S3	14	35.3 ± 0.0	NS
P	<i>Pyrola minor</i>	Lesser Pyrola				S3	3	19.2 ± 0.0	NS
P	<i>Anemone virginiana</i>	Virginia Anemone				S3	19	17.0 ± 0.0	NS
P	<i>Galium labradoricum</i>	Labrador Bedstraw				S3	96	37.8 ± 0.0	NS
P	<i>Salix pedicularis</i>	Bog Willow				S3	62	38.4 ± 0.0	NS
P	<i>Salix sericea</i>	Silky Willow				S3	1	70.7 ± 1.0	NS
P	<i>Saxifraga paniculata</i> ssp. <i>laestadii</i>	Laestadius' Saxifrage				S3	4	86.5 ± 1.0	NS
P	<i>Lindernia dubia</i>	Yellow-seeded False Pimperel				S3	51	25.7 ± 0.0	NS
P	<i>Laportea canadensis</i>	Canada Wood Nettle				S3	64	16.3 ± 0.0	NS
P	<i>Pilea pumila</i>	Dwarf Clearweed				S3	34	29.2 ± 0.0	NS
P	<i>Viola nephrophylla</i>	Northern Bog Violet				S3	10	6.7 ± 1.0	NS
P	<i>Carex bebbii</i>	Bebb's Sedge				S3	35	17.0 ± 0.0	NS
P	<i>Carex castanea</i>	Chestnut Sedge				S3	39	55.6 ± 0.0	NS
P	<i>Carex cryptolepis</i>	Hidden-scaled Sedge				S3	18	26.8 ± 10.0	NS
P	<i>Carex eburnea</i>	Bristle-leaved Sedge				S3	12	31.5 ± 0.0	NS
P	<i>Carex hirtifolia</i>	Pubescent Sedge				S3	55	12.5 ± 0.0	NS
P	<i>Carex lupulina</i>	Hop Sedge				S3	63	26.8 ± 10.0	NS
P	<i>Carex rosea</i>	Rosy Sedge				S3	44	12.5 ± 0.0	NS
P	<i>Carex swanii</i>	Swan's Sedge				S3	3	92.1 ± 0.0	NS
P	<i>Carex tenera</i>	Tender Sedge				S3	11	25.4 ± 0.0	NS

Taxonomic Group	Scientific Name	Common Name	COSEWIC	SARA	Prov Legal Prot	Prov Rarity Rank	# recs	Distance (km)	Prov
P	<i>Carex tribuloides</i>	Blunt Broom Sedge				S3	13	14.5 ± 0.0	NS
P	<i>Carex tuckermanii</i>	Tuckerman's Sedge				S3	53	24.9 ± 0.0	NS
P	<i>Carex atratiformis</i>	Scabrous Black Sedge				S3	3	76.9 ± 1.0	NS
P	<i>Eleocharis nitida</i>	Quill Spikerush				S3	11	53.7 ± 7.0	NS
P	<i>Eleocharis flavescens</i> var. <i>olivacea</i>	Bright-green Spikerush				S3	5	36.8 ± 0.0	NS
P	<i>Eriophorum gracile</i>	Slender Cottongrass				S3	56	18.2 ± 10.0	NS
P	<i>Juncus stygius</i> ssp. <i>americanus</i>	Moor Rush				S3	76	80.4 ± 0.0	NS
P	<i>Coeloglossum viride</i>	Long-bracted Frog Orchid				S3	1	34.8 ± 0.0	NS
P	<i>Cypripedium parviflorum</i>	Yellow Lady's-slipper				S3	590	39.0 ± 1.0	NS
P	<i>Neotia bifolia</i>	Southern Twayblade				S3	83	3.2 ± 0.0	NS
P	<i>Platanthera grandiflora</i>	Large Purple Fringed Orchid				S3	177	13.9 ± 1.0	NS
P	<i>Platanthera hookeri</i>	Hooker's Orchid				S3	32	30.2 ± 0.0	NS
P	<i>Dichanthelium linearifolium</i>	Narrow-leaved Panic Grass				S3	5	17.1 ± 0.0	NS
P	<i>Piptatheropsis canadensis</i>	Canada Ricegrass				S3	8	16.9 ± 1.0	NS
P	<i>Poa glauca</i>	Glaucous Blue Grass				S3	8	66.3 ± 0.0	NS
P	<i>Stuckenia filiformis</i>	Thread-leaved Pondweed				S3	3	97.3 ± 0.0	PE
P	<i>Potamogeton praelongus</i>	White-stemmed Pondweed				S3	39	12.2 ± 1.0	NS
P	<i>Potamogeton richardsonii</i>	Richardson's Pondweed				S3	6	17.0 ± 7.0	NS
P	<i>Potamogeton zosteriformis</i>	Flat-stemmed Pondweed				S3	26	34.6 ± 2.0	NS
P	<i>Asplenium viride</i>	Green Spleenwort				S3	12	33.4 ± 7.0	NS
P	<i>Dryopteris fragrans</i>	Fragrant Wood Fern				S3	15	5.0 ± 4.0	NS
P	<i>Sceptridium dissectum</i>	Dissected Moonwort				S3	9	22.4 ± 5.0	NS
P	<i>Polypodium appalachianum</i>	Appalachian Polypody				S3	16	17.2 ± 0.0	NS
P	<i>Persicaria amphibia</i> var. <i>emersa</i>	Long-root Smartweed				S3?	5	59.9 ± 0.0	NS
P	<i>Spiranthes ochroleuca</i>	Yellow Ladies'-tresses				S3?	58	5.2 ± 0.0	NS
P	<i>Diphasiastrum x sabinifolium</i>	Savin-leaved Ground-cedar				S3?	13	12.4 ± 0.0	NS
P	<i>Bidens vulgata</i>	Tall Beggarticks				S3S4	7	18.4 ± 0.0	NS
P	<i>Erigeron hyssopifolius</i>	Hyssop-leaved Fleabane				S3S4	35	26.7 ± 0.0	NS
P	<i>Hieracium paniculatum</i>	Panicled Hawkweed				S3S4	11	17.1 ± 0.0	NS
P	<i>Bidens beckii</i>	Water Beggarticks				S3S4	29	23.4 ± 1.0	NS
P	<i>Packera paupercula</i>	Balsam Groundsel				S3S4	115	17.0 ± 0.0	NS
P	<i>Atriplex glabriuscula</i> var. <i>franktonii</i>	Frankton's Saltbush				S3S4	18	32.6 ± 2.0	NS
P	<i>Shepherdia canadensis</i>	Soapberry				S3S4	113	81.8 ± 1.0	NS
P	<i>Vaccinium boreale</i>	Northern Blueberry				S3S4	5	69.2 ± 1.0	NS
P	<i>Vaccinium cespitosum</i>	Dwarf Bilberry				S3S4	51	18.5 ± 0.0	NS
P	<i>Vaccinium corymbosum</i>	Highbush Blueberry				S3S4	5	90.8 ± 0.0	NS
P	<i>Fagus grandifolia</i>	American Beech				S3S4	776	2.9 ± 0.0	NS
P	<i>Bartonia virginica</i>	Yellow Bartonia				S3S4	1	70.7 ± 7.0	NS
P	<i>Proserpinaca pectinata</i>	Comb-leaved Mermaidweed				S3S4	5	51.9 ± 1.0	NS
P	<i>Nuphar microphylla</i>	Small Yellow Pond-lily				S3S4	10	28.3 ± 1.0	NS
P	<i>Persicaria pensylvanica</i>	Pennsylvania Smartweed				S3S4	34	14.0 ± 0.0	NS
P	<i>Fallopia scandens</i>	Climbing False Buckwheat				S3S4	40	17.1 ± 7.0	NS
P	<i>Rumex pallidus</i>	Seabeach Dock				S3S4	1	89.0 ± 0.0	NS
P	<i>Pyrola asarifolia</i>	Pink Pyrola				S3S4	14	17.2 ± 1.0	NS
P	<i>Endotropis alnifolia</i>	alder-leaved buckthorn				S3S4	400	29.1 ± 0.0	NS
P	<i>Amelanchier spicata</i>	Running Serviceberry				S3S4	13	37.3 ± 5.0	NS
P	<i>Crataegus succulenta</i>	Fleshy Hawthorn				S3S4	5	85.9 ± 5.0	PE
P	<i>Fragaria vesca</i> ssp. <i>americana</i>	Woodland Strawberry				S3S4	71	12.2 ± 0.0	NS
P	<i>Fragaria vesca</i>	Woodland Strawberry				S3S4	12	42.4 ± 0.0	NS
P	<i>Galium aparine</i>	Common Bedstraw				S3S4	34	19.4 ± 0.0	NS
P	<i>Geocalcaon lividum</i>	Northern Comandra				S3S4	12	34.9 ± 0.0	NS
P	<i>Limosella australis</i>	Southern Mudwort				S3S4	32	36.4 ± 0.0	NS
P	<i>Ulmus americana</i>	White Elm				S3S4	119	12.2 ± 0.0	NS

Taxonomic Group	Scientific Name	Common Name	COSEWIC	SARA	Prov Legal Prot	Prov Rarity Rank	# recs	Distance (km)	Prov
P	<i>Verbena hastata</i>	Blue Vervain				S3S4	248	15.7 ± 0.0	NS
P	<i>Viola sagittata</i> var. <i>ovata</i>	Arrow-Leaved Violet				S3S4	11	62.5 ± 0.0	NS
P	<i>Viola selkirkii</i>	Great-Spurred Violet				S3S4	5	34.9 ± 0.0	NS
P	<i>Symplocarpus foetidus</i>	Eastern Skunk Cabbage				S3S4	137	46.1 ± 0.0	NS
P	<i>Carex argyrantha</i>	Silvery-flowered Sedge				S3S4	5	79.0 ± 5.0	PE
P	<i>Triglochin gaspensis</i>	Gasp Arrowgrass				S3S4	21	83.5 ± 0.0	NB
P	<i>Juncus acuminatus</i>	Sharp-Fruit Rush				S3S4	7	51.3 ± 2.0	NS
P	<i>Juncus subcaudatus</i>	Woods-Rush				S3S4	20	25.1 ± 3.0	NS
P	<i>Luzula parviflora</i> ssp. <i>melanocarpa</i>	Black-fruited Woodrush				S3S4	5	50.3 ± 0.0	NS
P	<i>Goodyera repens</i>	Lesser Rattlesnake-plantain				S3S4	21	62.5 ± 1.0	PE
P	<i>Liparis loeselii</i>	Loesel's Twayblade				S3S4	23	20.8 ± 1.0	NS
P	<i>Platanthera obtusata</i>	Blunt-leaved Orchid				S3S4	6	41.0 ± 1.0	NS
P	<i>Platanthera orbiculata</i>	Small Round-leaved Orchid				S3S4	40	4.6 ± 0.0	NS
P	<i>Alopecurus aequalis</i>	Short-awned Foxtail				S3S4	29	17.6 ± 1.0	NS
P	<i>Dichanthelium clandestinum</i>	Deer-tongue Panic Grass				S3S4	170	50.2 ± 5.0	NS
P	<i>Panicum philadelphicum</i>	Philadelphia Panicgrass				S3S4	15	28.5 ± 0.0	NS
P	<i>Koeleria spicata</i>	Narrow False Oats				S3S4	17	17.0 ± 0.0	NS
P	<i>Asplenium trichomanes</i>	Maidenhair Spleenwort				S3S4	12	81.4 ± 1.0	NS
P	<i>Equisetum pratense</i>	Meadow Horsetail				S3S4	15	8.6 ± 0.0	NS
P	<i>Diphasiastrum complanatum</i>	Northern Ground-cedar				S3S4	22	23.4 ± 0.0	NS
P	<i>Diphasiastrum sitchense</i>	Sitka Ground-cedar				S3S4	5	11.1 ± 5.0	NS
P	<i>Huperzia appressa</i>	Mountain Firmoss				S3S4	17	4.6 ± 7.0	NS
P	<i>Sceptridium multifidum</i>	Leathery Moonwort				S3S4	10	35.6 ± 0.0	NS
P	<i>Botrychium matricariifolium</i>	Daisy-leaved Moonwort				S3S4	11	12.7 ± 1.0	NS
P	<i>Viola canadensis</i>	Canada Violet				SH	2	18.1 ± 7.0	NS

5.1 SOURCE BIBLIOGRAPHY (100 km)

The recipient of these data shall acknowledge the AC CDC and the data sources listed below in any documents, reports, publications or presentations, in which this dataset makes a significant contribution.

# recs	CITATION
10543	Lepage, D. 2014. Maritime Breeding Bird Atlas Database. Bird Studies Canada, Sackville NB, 407,838 recs.
8381	Morrison, Guy. 2011. Maritime Shorebird Survey (MSS) database. Canadian Wildlife Service, Ottawa, 15939 surveys. 86171 recs.
5481	Pardieck, K.L., Ziolkowski Jr., D.J., Lutmerding, M., Aponete, V.I., and Hudson, M-A.R. 2020. North American Breeding Bird Survey Dataset 1966 - 2019: U.S. Geological Survey data release, https://doi.org/10.5066/P9J6QUF6
5053	iNaturalist.ca. 2023. iNaturalist Data Export December 2022. iNaturalist.org; iNaturalist.ca.
4478	Erskine, A.J. 1992. Maritime Breeding Bird Atlas Database. NS Museum & Nimbus Publ., Halifax, 82,125 recs.
3948	East Coast Aquatics Inc. 2023. Year 3 (2022) Wood Turtle Monitoring Hwy 104 Sutherlands River To Antigonish.
3773	Eaton, S. 2014. Nova Scotia Wood Turtle Database. Environment and Climate Change Canada, 4843 recs.
3674	Paquet, Julie. 2018. Atlantic Canada Shorebird Survey (ACSS) database 2012-2018. Environment Canada, Canadian Wildlife Service.
2106	Berrigan, L. 2019. Maritimes Marsh Monitoring Project 2013, 2014, 2016, 2017, and 2018 data. Bird Studies Canada, Sackville, NB.
1755	iNaturalist. 2020. iNaturalist Data Export 2020. iNaturalist.org and iNaturalist.ca, Web site: 128728 recs.
1620	eBird. 2020. eBird Basic Dataset. Version: EBD_relNov-2019. Ithaca, New York. Nov 2019, Cape Breton Bras d'Or Lakes Watershed subset. Cornell Lab of Ornithology.
1594	eBird. 2014. eBird Basic Dataset. Version: EBD_relNov-2014. Ithaca, New York. Nov 2014. Cornell Lab of Ornithology, 25036 recs.
920	SwiftWatch. 2022. Total Chimney Swift counts from roost watches for the duration of the SwiftWatch program (2011-2021). Birds Canada.
895	Patrick, A.; Horne, D.; Noseworthy, J. et. al. 2017. Field data for Nova Scotia and New Brunswick, 2015 and 2017. Nature Conservancy of Canada.
763	Island Nature Trust. 2023. Bobolink observations from Farmland Bird Program, 2017-2022. Island Nature Trust. Pers. comm., 1346 records.
636	Neily, T.H. & Pepper, C.; Toms, B. 2018. Nova Scotia lichen database [as of 2018-03]. Mersey Tobeatic Research Institute.
622	Cameron, E. 2008. Canadian Gypsum Co. survey 2007-08. Conestoga-Rovers & Assoc., 623 recs.
548	Blaney, C.S.; Mazerolle, D.M.; Belliveau, A.B. 2015. Atlantic Canada Conservation Data Centre Fieldwork 2015. Atlantic Canada Conservation Data Centre, # recs.
499	Wildlife Division. 2021. Fraxinus nigra records assembled to define and model habitat. Nova Scotia Department of Natural Resources and Renewables.
482	Paquet, Julie. 2019. Atlantic Canada Shorebird Survey ACSS database for 2019. Environment Canada, Canadian Wildlife Service.
461	Amirault, D.L. & Stewart, J. 2007. Piping Plover Database 1894-2006. Canadian Wildlife Service, Sackville, 3344 recs, 1228 new.
426	Clayden, S. Digitization of Wolfgang Maass Nova Scotia forest lichen collections, 1964-2004. New Brunswick Museum. 2018.

# recs	CITATION
423	Tranquilla, L. 2015. Maritimes Marsh Monitoring Project 2015 data. Bird Studies Canada, Sackville NB, 5062 recs.
398	Benjamin, L.K. (compiler). 2007. Significant Habitat & Species Database. Nova Scotia Dept Natural Resources, 8439 recs.
358	Belliveau, A.G. 2020. E.C. Smith Herbarium and Atlantic Canada Conservation Data Centre Fieldwork 2019, 2020. E.C. Smith Herbarium.
354	Blaney, C.S.; Mazerolle, D.M. 2010. Fieldwork 2010. Atlantic Canada Conservation Data Centre. Sackville NB, 15508 recs.
337	Blaney, C.S.; Mazerolle, D.M.; Belliveau, A.B. 2014. Atlantic Canada Conservation Data Centre Fieldwork 2014. Atlantic Canada Conservation Data Centre, # recs.
308	Newell, R.E. 2000. E.C. Smith Herbarium Database. Acadia University, Wolfville NS, 7139 recs.
299	Benjamin, L.K. (compiler). 2012. Significant Habitat & Species Database. Nova Scotia Dept Natural Resources, 4965 recs.
282	Newell, R.E. 2005. E.C. Smith Digital Herbarium. E.C. Smith Herbarium, Irving Biodiversity Collection, Acadia University, Web site: http://luxor.acadiau.ca/library/Herbarium/project/ . 582 recs.
276	Neily, T.H. & Pepper, C.; Toms, B. 2013. Nova Scotia lichen location database. Mersey Tobeatic Research Institute, 1301 records.
274	Blaney, C.S.; Mazerolle, D.M. 2012. Fieldwork 2012. Atlantic Canada Conservation Data Centre, 13,278 recs.
252	Blaney, C.S. & Spicer, C.D.; Popma, T.M.; Basquill, S.P. 2003. Vascular Plant Surveys of Northumberland Strait Rivers & Amherst Area Peatlands. Nova Scotia Museum Research Grant, 501 recs.
250	Henger, Benjamin. 2023. Barn Swallow observations since 2017. Island Nature Trust.
243	Scott, F.W. 2002. Nova Scotia Herpetofauna Atlas Database. Acadia University, Wolfville NS, 8856 recs.
239	Chapman-Lam, C.J. 2022. Atlantic Canada Conservation Data Centre 2021 botanical fieldwork. Atlantic Canada Conservation Data Centre, 15099 recs.
211	Hicks, Andrew. 2009. Coastal Waterfowl Surveys Database, 2000-08. Canadian Wildlife Service, Sackville, 46488 recs (11149 non-zero).
211	Neily, T.H. 2017. Nova Scotia lichen records. Mersey Tobeatic Research Institute.
204	Pronych, G. & Wilson, A. 1993. Atlas of Rare Vascular Plants in Nova Scotia. Nova Scotia Museum, Halifax NS, I:1-168, II:169-331. 1446 recs.
198	Churchill, J.L.; Klymko, J.D. 2015. Chignecto and Tintamarre National Wildlife Area Bird Surveys 2015. Atlantic Canada Conservation Data Centre, 2238 recs.
196	LaPaix, R.W.; Crowell, M.J.; MacDonald, M. 2011. Stantec rare plant records, 2010-11. Stantec Consulting, 334 recs.
194	Brunelle, P.-M. (compiler). 2009. ADIP/MDDS Odonata Database: data to 2006 inclusive. Atlantic Dragonfly Inventory Program (ADIP), 24200 recs.
191	Klymko, J. 2018. Maritimes Butterfly Atlas database. Atlantic Canada Conservation Data Centre.
190	Churchill, J.L. 2022. Atlantic Canada Conservation Data Centre Fieldwork 2022. Atlantic Canada Conservation Data Centre.
180	Blaney, C.S. & Mazerolle, D.M. 2011. Field data from NCC properties at Musquash Harbour NB & Goose Lake NS. Atlantic Canada Conservation Data Centre, 1739 recs.
178	Bryson, I. 2013. Nova Scotia rare plant records. CBCL Ltd., 180 records.
167	Island Nature Trust. 2016. Farmland birds project. Mader, Shannon (ed.) .
156	Gallop, John. 2023. Species at Risk and Species of Conservation Interest records. McCallum Environmental.
154	Hagerman, Christianne. 2022. Wisqoq and Eastern White Cedar field work. E.C. Smith Herbarium, Acadia University.
151	Chapman, C.J. 2018. Atlantic Canada Conservation Data Centre botanical fieldwork 2018. Atlantic Canada Conservation Data Centre, 11171 recs.
145	Toms, B. 2018. Bat Species data from www.batconservation.ca for Nova Scotia. Mersey Tobeatic Research Institute, 547 Records.
144	Wilhelm, S.I. et al. 2011. Colonial Waterbird Database. Canadian Wildlife Service, Sackville, 2698 sites, 9718 recs (8192 obs).
141	Pepper, C. 2013. 2013 rare bird and plant observations in Nova Scotia. , 181 records.
136	Churchill, J.L. 2018. Atlantic Canada Conservation Data Centre Fieldwork 2018. Atlantic Canada Conservation Data Centre, 907 recs.
135	Blaney, C.S.; Mazerolle, D.M.; Hill, N.M. 2011. Nova Scotia Crown Share Land Legacy Trust Fieldwork. Atlantic Canada Conservation Data Centre, 5022 recs.
134	Belliveau, A.G. 2018. Atlantic Canada Conservation Data Centre Fieldwork 2017. Atlantic Canada Conservation Data Centre.
129	Manthorne, A. 2014. MaritimesSwiftwatch Project database 2013-2014. Bird Studies Canada, Sackville NB, 326 recs.
128	Mazerolle, D.M. 2018. Atlantic Canada Conservation Data Centre botanical fieldwork 2018. Atlantic Canada Conservation Data Centre, 13515 recs.
127	MacDonald, Haley. 2022. Updates to <i>Fraxinus nigra</i> observations on NCC Docherty's Brook property. Nature Conservancy of Canada.
116	Bryson, I.C. 2020. Nova Scotia flora and lichen observations 2020. Nova Scotia Environment, 139 recs.
115	Chapman-Lam, C.J. 2021. Atlantic Canada Conservation Data Centre 2020 botanical fieldwork. Atlantic Canada Conservation Data Centre, 17309 recs.
113	Blaney, C.S. 2000. Fieldwork 2000. Atlantic Canada Conservation Data Centre. Sackville NB, 1265 recs.
112	Blaney, C.S. 2020. Sean Blaney 2020 field data. Atlantic Canada Conservation Data Centre, 4407 records.
112	Richardson, Leif. 2018. Maritimes <i>Bombus</i> records from various sources. Richardson, Leif.
107	McAlpine, D.F. 1998. NBM Science Collections databases to 1998. New Brunswick Museum, Saint John NB, 241 recs.
106	McRae, Daniel. 2023. Black Ash and other flora records on Prince Edward Island. MacPhail Woods Ecological Forestry Project, 443 records.
104	Catling, P.M., Erskine, D.S. & MacLaren, R.B. 1985. The Plants of Prince Edward Island with new records, nomenclatural changes & corrections & deletions, 1st Ed. Research Branch, Agriculture Canada, Ottawa, Publication 1798. 22pp.
104	Munro, Marian K. Nova Scotia Provincial Museum of Natural History Herbarium Database. Nova Scotia Provincial Museum of Natural History, Halifax, Nova Scotia. 2013.
99	Blaney, C.S.; Korol, J.B.; Crowell, I. 2023. 2022 AC CDC Botany program field data. Atlantic Canada Conservation Data Centre, 5293 records.
97	Cameron, R.P. 2009. Cyanolichen database. Nova Scotia Environment & Labour, 1724 recs.
96	LaPaix, R.W.; Crowell, M.J.; MacDonald, M.; Neily, T.D.; Quinn, G. 2017. Stantec Nova Scotia rare plant records, 2012-2016. Stantec Consulting.
95	Parks Canada. 2021. PEI National Park Bank swallow nest records from 2010-2019. Parks Canada, 1535 records.
88	Munro, Marian K. Tracked lichen specimens, Nova Scotia Provincial Museum of Natural History Herbarium. Atlantic Canada Conservation Data Centre. 2019.
87	McNeil, J.A. 2018. Wood Turtle records, 2018. Mersey Tobeatic Research Institute, 68 recs.
84	Blaney, C.S.; Mazerolle, D.M.; Belliveau, A.B. 2013. Atlantic Canada Conservation Data Centre Fieldwork 2013. Atlantic Canada Conservation Data Centre, 9000+ recs.
82	iNaturalist. 2018. iNaturalist Data Export 2018. iNaturalist.org and iNaturalist.ca, Web site: 11700 recs.
80	Belliveau, A.G. 2016. Atlantic Canada Conservation Data Centre Fieldwork 2016. Atlantic Canada Conservation Data Centre, 10695 recs.
80	Nature Conservancy of Canada. 2022. NCC Field data for Nova Scotia. Nature Conservancy of Canada.
78	Burns, L. 2013. Personal communication concerning bat occurrence on PEI. Winter 2013. Pers. comm.
76	Klymko, J.J.D. 2012. Insect fieldwork & submissions, 2011. Atlantic Canada Conservation Data Centre. Sackville NB, 760 recs.

# recs	CITATION
72	Cameron, R.P. 2011. Lichen observations, 2011. Nova Scotia Environment & Labour, 731 recs.
70	Zinck, M. & Roland, A.E. 1998. Roland's Flora of Nova Scotia. Nova Scotia Museum, 3rd ed., rev. M. Zinck; 2 Vol., 1297 pp.
68	Blaney, C.S.; Mazerolle, D.M. 2008. Fieldwork 2008. Atlantic Canada Conservation Data Centre. Sackville NB, 13343 recs.
68	Staicer, C. & Bliss, S.; Achenbach, L. 2017. Occurrences of tracked breeding birds in forested wetlands. , 303 records.
67	Blaney, C.S.; Mazerolle, D.M.; Oberndorfer, E. 2007. Fieldwork 2007. Atlantic Canada Conservation Data Centre. Sackville NB, 13770 recs.
65	Roland, A.E. & Smith, E.C. 1969. The Flora of Nova Scotia, 1st Ed. Nova Scotia Museum, Halifax, 743pp.
64	Belliveau, A.G. 2021. E.C. Smith Herbarium and Atlantic Canada Conservation Data Centre Fieldwork 2021. E.C. Smith Herbarium.
64	Tims, J. & Craig, N. 1995. Environmentally Significant Areas in New Brunswick (NBESA). NB Dept of Environment & Nature Trust of New Brunswick Inc, 6042 recs. https://doi.org/10.1037/arc0000014 .
60	Belland, R.J. Maritimes moss records from various herbarium databases. 2014.
60	Glen, W. 1991. 1991 Prince Edward Island Forest Biomass Inventory Data. PEI Dept of Energy and Forestry, 10059 recs.
60	Staicer, C. 2021. Additional compiled Nova Scotia Species at Risk bird records, 2005-2020. Dalhousie University.
59	Blaney, C.S. 2016. Atlantic Canada Conservation Data Centre Fieldwork 2016. Atlantic Canada Conservation Data Centre, 6719 recs.
59	Nussey, Pat & NCC staff. 2019. AEI tracked species records, 2016-2019. Chapman, C.J. (ed.) Atlantic Canada Conservation Data Centre, 333.
56	Birds Canada. 2022. Maritimes Swiftwatch project data for 2022. Pers. comm., 155 records.
55	Amirault, D.L. & McKnight, J. 2003. Piping Plover Database 1991-2003. Canadian Wildlife Service, Sackville, unpublished data. 7 recs.
54	Patrick, Allison. 2021. Animal and plant records from NCC properties from 2019 and 2020. Nature Conservancy Canada.
53	Toms, Brad & Pepper, Chris; Neily, Tom. 2022. Nova Scotia lichen database [as of 2022-04]. Mersey Tobeatic Research Institute.
52	Blaney, C.S. 2018. Atlantic Canada Conservation Data Centre Fieldwork 2018. Atlantic Canada Conservation Data Centre.
52	Canadian Wildlife Service, Dartmouth. 2010. Piping Plover censuses 2007-09, 304 recs.
52	Pepper, C. 2021. Rare bird, plant and mammal observations in Nova Scotia, 2017-2021.
50	Blaney, C.S.; Spicer, C.D.; Rothfels, C. 2004. Fieldwork 2004. Atlantic Canada Conservation Data Centre. Sackville NB, 1343 recs.
50	Cameron, R.P. 2009. Erioderma pedicellatum database, 1979-2008. Dept Environment & Labour, 103 recs.
50	e-Butterfly. 2016. Export of Maritimes records and photos. Maxim Larrivee, Sambo Zhang (ed.) e-butterfly.org.
50	Hall, R.A. 2003. NS Freshwater Mussel Fieldwork. Nova Scotia Dept Natural Resources, 189 recs.
50	iNaturalist. 2020. iNaturalist butterfly records selected for the Maritimes Butterfly Atlas. iNaturalist.
50	MacDonald, E.C. 2018. CWS Piping Plover Census, 2010-2017. Canadian Wildlife Service, 672 recs.
49	Blaney, C.S.; Spicer, C.D.; Popma, T.M.; Hanel, C. 2002. Fieldwork 2002. Atlantic Canada Conservation Data Centre. Sackville NB, 2252 recs.
49	Hall, R.A. 2001. S.. NS Freshwater Mussel Fieldwork. Nova Scotia Dept Natural Resources, 178 recs.
48	Layberry, R.A. & Hall, P.W., LaFontaine, J.D. 1998. The Butterflies of Canada. University of Toronto Press. 280 pp+plates.
48	Porter, Caitlin et al. 2022. 2021 wildlife observations from the Caemmerer NCC site. Atlantic Canada Conservation Data Centre.
47	Churchill, J.L. 2020. Atlantic Canada Conservation Data Centre Fieldwork 2020. Atlantic Canada Conservation Data Centre, 1083 recs.
47	Porter, C.J.M. 2014. Field work data 2007-2014. Nova Scotia Nature Trust, 96 recs.
46	Staicer, Cindy. 2023. 2022 SAR Bird field occurrences from the Landbirds at Risk Project, NS. Dalhousie University, 446 records.
45	Staicer, Cindy. 2022. 2021 Landbird Species at Risk observations. Dalhousie University.
44	Blaney, C.S. 2003. Fieldwork 2003. Atlantic Canada Conservation Data Centre. Sackville NB, 1042 recs.
44	Neily, T.H. & Pepper, C.; Toms, B. 2015. Nova Scotia lichen location database [as of 2015-02-15]. Mersey Tobeatic Research Institute, 1691 records.
44	Nova Scotia Nature Trust. 2013. Nova Scotia Nature Trust 2013 Species records. Nova Scotia Nature Trust, 95 recs.
44	Spicer, C.D. & Harries, H. 2001. Mount Allison Herbarium Specimens. Mount Allison University, 128 recs.
42	Blaney, C.S.; Spicer, C.D. 2001. Fieldwork 2001. Atlantic Canada Conservation Data Centre. Sackville NB, 981 recs.
42	Chapman, C.J. 2019. Atlantic Canada Conservation Data Centre 2019 botanical fieldwork. Atlantic Canada Conservation Data Centre, 11729 recs.
41	Benjamin, L.K. (compiler). 2001. Significant Habitat & Species Database. Nova Scotia Dept of Natural Resources, 15 spp, 224 recs.
41	Brazner, J. 2016. Nova Scotia Forested Wetland Bird Surveys. Nova Scotia Department of Lands and Forestry.
40	Blaney, C.S. 2017. Atlantic Canada Conservation Data Centre Fieldwork 2017. Atlantic Canada Conservation Data Centre.
40	Cameron, E. 2007. Canadian Gypsum Co. survey 2005-07. Dillon Consulting Ltd, 40 recs.
40	Neily, T.H. & Pepper, C.; Toms, B. 2020. Nova Scotia lichen database [as of 2020-03-18]. Mersey Tobeatic Research Institute.
38	MacDonald, E.C. 2018. Piping Plover nest records from 2010-2017. Canadian Wildlife Service.
37	Klymko, J. 2016. Atlantic Canada Conservation Data Centre Fieldwork 2016. Atlantic Canada Conservation Data Centre.
36	Erskine, D. 1960. The plants of Prince Edward Island, 1st Ed. Research Branch, Agriculture Canada, Ottawa., Publication 1088. 1238 recs.
34	Klymko, John. 2022. Atlantic Canada Conservation Data Centre zoological fieldwork 2021. Atlantic Canada Conservation Data Centre.
33	Arsenault, M. 2019. Cormorant colony nest counts. PE Department of Communities, Land, and Environment.
33	Hubley, Nicole. 2022. Monarch (<i>Danaus plexippus</i>) records submitted to MTRI from the 2021 field season. Mersey Tobeatic Research Institute.
33	Stewart, J.I. 2010. Peregrine Falcon Surveys in New Brunswick, 2002-09. Canadian Wildlife Service, Sackville, 58 recs.
32	Blaney, C.S.; Mazerolle, D.M.; Klymko, J; Spicer, C.D. 2006. Fieldwork 2006. Atlantic Canada Conservation Data Centre. Sackville NB, 8399 recs.
30	Neily, T.H. & Pepper, C. 2020. Nova Scotia SMP lichen surveys 2020. Mersey Tobeatic Research Institute.
30	Neily, T.H. 2019. Tom Neily NS Bryophyte records (2009-2013). T.H. Neily, Atlantic Canada Conservation Data Centre, 1029 specimen records.
29	eBird. 2021. eBird Basic Dataset. Version: EBD_relOct-2020. Ithaca, New York. Oct 2020, Prince Edward Island Bird SAR subset. Cornell Lab of Ornithology.
29	NatureServe Canada. 2019. iNaturalist Maritimes Butterfly Records. iNaturalist.org and iNaturalist.ca.
29	Sollows, M.C., 2008. NBM Science Collections databases: mammals. New Brunswick Museum, Saint John NB, download Jan. 2008, 4983 recs.
28	Belliveau, A.G. 2018. E.C. Smith Herbarium and Atlantic Canada Conservation Data Centre Fieldwork 2018. E.C. Smith Herbarium, 6226 recs.

# recs	CITATION
28	Mazerolle, D.M. 2017. Atlantic Canada Conservation Data Centre Fieldwork 2017. Atlantic Canada Conservation Data Centre.
28	Pepper, Chris. 2012. Observations of breeding Canada Warbler's along the Eastern Shore, NS. Pers. comm. to S. Blaney, Jan. 20, 28 recs.
27	PEI National Park. 2019. SAR and Bombus records from PEI NP from the 2019 field season. Moody, Allison (ed.) PEI National Park, 158 recs.
27	Porter, Caitlin. 2021. Field data for 2020 in various locations across the Maritimes. Atlantic Canada Conservation Data Centre, 3977 records.
26	Erskine, A.J. 1999. Maritime Nest Records Scheme (MNRS) 1937-1999. Canadian Wildlife Service, Sackville, 313 recs.
26	Phinney, Lori. 2020. Pre- and post White-nose Syndrome bat acoustic monitoring, NS. Mersey Tobeatic Research Institute, 1279 recs.
25	LaPaix, Rich. 2022. Rare species observations, 2018-2022. Nova Scotia Nature Trust.
25	Ogden, J. NS DNR Butterfly Collection Dataset. Nova Scotia Department of Natural Resources. 2014.
25	Popma, T.M. 2003. Fieldwork 2003. Atlantic Canada Conservation Data Centre. Sackville NB, 113 recs.
24	Archibald, D.R. 2003. NS Freshwater Mussel Fieldwork. Nova Scotia Dept Natural Resources, 213 recs.
24	Benjamin, L.K. 2011. NSDNR fieldwork & consultant reports 1997, 2009-10. Nova Scotia Dept Natural Resources, 85 recs.
24	Cameron, R.P. 2018. <i>Degelia plumbea</i> records. Nova Scotia Environment.
24	Powell, B.C. 1967. Female sexual cycles of <i>Chrysemy spicta</i> & <i>Clemmys insculpta</i> in Nova Scotia. Can. Field-Nat., 81:134-139. 26 recs.
23	Westwood, A., Staicer, C. 2016. Nova Scotia landbird Species at Risk observations. Dalhousie University.
22	Chapman, C.N. (Cody). 2020. Nova Scotia Black Ash (<i>Fraxinus nigra</i>) field observations by Confederacy of Mainland Mi'kmaq. Forestry Program, Confederacy of Mainland Mi'kmaq.
22	Curley, F.R. 2005. PEF&W Collection 2003-04. PEI Fish & Wildlife Div., 716 recs.
22	Klymko, J.J.D.; Robinson, S.L. 2012. 2012 field data. Atlantic Canada Conservation Data Centre, 447 recs.
22	Mersey Tobeatic Research Institute. 2021. 2020 Monarch records from the MTRI monitoring program. Mersey Tobeatic Research Institute, 72 records.
22	Neily, T.H. 2010. <i>Erioderma pedicellatum</i> records 2005-09. Mersey Tobeatic Research Institute, 67 recs.
22	Nelly, T.H. 2006. <i>Cypripedium arietinum</i> in Hants Co. Pers. comm. to C.S. Blaney. 22 recs, 22 recs.
22	Staicer, Cindy. 2023. 2022 SAR Bird ARU occurrences. Dalhousie University, 379 records.
21	Belliveau, A. 2013. Rare species records from Nova Scotia. Mersey Tobeatic Research Institute, 296 records. 296 recs.
21	Churchill, J.L., Klymko, J.D.D. 2016. Atlantic Canada Conservation Data Centre Fieldwork 2016. Atlantic Canada Conservation Data Centre.
21	Manthorne, A. 2019. Incidental aerial insectivore observations. Birds Canada.
21	Pulsifer, M.D. 2002. NS Freshwater Mussel Fieldwork. Nova Scotia Dept Natural Resources, 369 recs.
20	Blaney, C.S.; Spicer, C.D.; Mazerolle, D.M. 2005. Fieldwork 2005. Atlantic Canada Conservation Data Centre. Sackville NB, 2333 recs.
20	Haughian, Sean. 2021. Update to lichen data from 2017-2021. Nova Scotia Museum.
20	Klymko, J.J.D. 2016. 2015 field data. Atlantic Canada Conservation Data Centre.
20	Phinney, Lori; Toms, Brad; et. al. 2016. Bank Swallows (<i>Riparia riparia</i>) in Nova Scotia: inventory and assessment of colonies. Merser Tobeiatc Research Institute, 25 recs.
19	Godbout, V. 2002. SAR Inventory: Birds in Fort Beauséjour NHS. Parks Canada, Atlantic, SARINV02-01. 202 recs.
19	NS DNR. 2017. Black Ash records from NS DNR Permanent Sample Plots (PSPs), 1965-2016. NS Dept of Natural Resources.
18	Munro, Marian K. Nova Scotia Provincial Museum of Natural History Herbarium Database. Nova Scotia Provincial Museum of Natural History, Halifax, Nova Scotia. 2014.
17	Anderson, Frances; Neily, Tom. 2010. A Reconnaissance Level Survey of Calciphilous Lichens in Selected Karst Topography in Nova Scotia with Notes on Incidental Bryophytes. Mersey Tobeatic Research Institute.
17	Belliveau, A.G. 2014. Plant Records from Southern and Central Nova Scotia. Atlantic Canada Conservation Data Centre, 919 recs.
17	Cameron, R.P. 2014. 2013-14 rare species field data. Nova Scotia Department of Environment, 35 recs.
17	Ferguson, D.C. 1954. The Lepidoptera of Nova Scotia. Part I, macrolepidoptera. Proceedings of the Nova Scotian Institute of Science, 23(3), 161-375.
17	Neily, T. H. 2018. Lichen and Bryophyte records, AEI 2017-2018. Tom Neily; Atlantic Canada Conservation Data Centre.
16	Cameron, R.P. 2013. 2013 rare species field data. Nova Scotia Department of Environment, 71 recs.
16	Gilhen, J. 1984. Amphibians & Reptiles of Nova Scotia, 1st Ed. Nova Scotia Museum, 164pp.
16	Hirtle, Sarah. 2023. 2022 Bank Swallow occurrence data. Island Nature Trust.
16	McNeil, J.A. 2016. Blandings Turtle (<i>Emydoidea blandingii</i>), Eastern Ribbonsnake (<i>Thamnophis sauritus</i>), Wood Turtle (<i>Glyptemys insculpta</i>), and Snapping Turtle (<i>Chelydra serpentina</i>) sightings, 2016. Mersey Tobeatic Research Institute, 774 records.
15	Richardson, D., Anderson, F., Cameron, R., McMullin, T., Clayden, S. 2014. Field Work Report on Black Foam Lichen (<i>Anzia colpodis</i>). COSEWIC.
14	Chaput, G. 2002. Atlantic Salmon: Maritime Provinces Overview for 2001. Dept of Fisheries & Oceans, Atlantic Region, Science Stock Status Report D3-14. 39 recs.
14	Chiasson, R. 2018. Breeding bird observations from NBWTF project. pers. comm. to S. Blaney.
14	e-Butterfly. 2019. Export of Maritimes records and photos. McFarland, K. (ed.) e-butterfly.org.
14	McMullin, R.T. 2022. Maritimes lichen records. Canadian Museum of Nature.
14	McNeil, Jeffie. 2023. 2022 Turtle Records. Mersey Tobeatic Research Institute.
14	Neily, T.H. 2012. 2012 <i>Erioderma pedicellatum</i> records in Nova Scotia.
13	Blaney, C.S. 2019. Sean Blaney 2019 field data. Atlantic Canada Conservation Data Centre, 4407 records.
13	Blaney, C.S.; Mazerolle, D.M. 2011. Fieldwork 2011. Atlantic Canada Conservation Data Centre. Sackville NB.
13	Feltham, Carter. 2022. Monarch (<i>Danaus plexippus</i>) and Milkweed MTRI records from the 2022 Field Season. Mersey Tobeatic Research Institute.
13	Klymko, John. 2023. Atlantic Canada Conservation Data Centre zoological fieldwork 2022. Atlantic Canada Conservation Data Centre.
13	Nova Scotia Nature Trust. 2014. Ladyslipper records from Saint Croix Nova Scotia, JLC Ed. Nova Scotia Nature Trust.
13	Robinson, S.L. 2015. 2014 field data.
12	Basquill, S.P. 2012. 2012 rare vascular plant field data. Nova Scotia Department of Natural Resources, 37 recs.
12	Benedict, B. Connell Herbarium Specimens (Data) . University New Brunswick, Fredericton. 2003.
12	Bryson, I. 2020. Nova Scotia and Newfoundland rare species observations, 2018-2020. Nova Scotia Environment.
12	Downes, C. 1998-2000. Breeding Bird Survey Data. Canadian Wildlife Service, Ottawa, 111 recs.

# recs	CITATION
12	Klymko, J. 2021. Atlantic Canada Conservation Data Centre zoological fieldwork 2020. Atlantic Canada Conservation Data Centre.
11	Adams, J. & Herman, T.B. 1998. Thesis, Unpublished map of <i>C. insculpta</i> sightings. Acadia University, Wolfville NS, 88 recs.
11	Bateman, M.C. 2001. Coastal Waterfowl Surveys Database, 1965-2001. Canadian Wildlife Service, Sackville, 667 recs.
11	Doucet, D.A. 2009. Census of Globally Rare, Endemic Butterflies of Nova Scotia Gulf of St Lawrence Salt Marshes. Nova Scotia Dept of Natural Resources, Species at Risk, 155 recs.
11	Klymko, J. Dataset of butterfly records at the New Brunswick Museum not yet accessioned by the museum. Atlantic Canada Conservation Data Centre. 2016.
10	Churchill, J.L.; Walker, J. 2017. Species at Risk Surveys at Correctional Services Canada Properties in Nova Scotia and New Brunswick. Atlantic Canada Conservation Data Centre.
10	Goltz, J.P. & Bishop, G. 2005. Confidential supplement to Status Report on Prototype Quillwort (<i>Isoetes prototypus</i>). Committee on the Status of Endangered Wildlife in Canada, 111 recs.
10	Klymko, J.J.D. 2018. 2017 field data. Atlantic Canada Conservation Data Centre.
10	Ogden, K. Nova Scotia Museum butterfly specimen database. Nova Scotia Museum. 2017.
10	Toms, Brad. 2022. Non-Lichen Observations from Lichen SMP and NCC Property Searches. Mersey Tobeatic Research Institute.
9	Benedict, B. Connell Herbarium Specimens. University New Brunswick, Fredericton. 2003.
9	Benjamin, L.K. 2006. <i>Cypridium arietinum</i> . Pers. comm. to D. Mazerolle. 9 recs, 9 recs.
9	Benjamin, L.K. 2012. NSDNR fieldwork & consultant reports 2008-2012. Nova Scotia Dept Natural Resources, 196 recs.
9	Blacquiere, Hailey. 2022. Black Ash locations in August 2022. PEI Forests Fish and Wildlife Division. Pers. comm., 9 records.
9	Cameron, R.P. 2005. <i>Erioderma pedicellatum</i> unpublished data. NS Dept of Environment, 9 recs.
9	Cameron, R.P. 2006. <i>Erioderma pedicellatum</i> 2006 field data. NS Dept of Environment, 9 recs.
9	Cameron, R.P. 2017. 2017 rare species field data. Nova Scotia Environment, 64 recs.
9	Hughes, Cory. 2020. Atlantic Forestry Centre <i>Coccinella transversoguttata</i> collections. Canadian Forest Service, Atlantic Forestry Centre.
9	Webster, R.P. Atlantic Forestry Centre Insect Collection, Maritimes butterfly records. Natural Resources Canada. 2014.
9	Zahavich, J. 2018. Canada Warbler and Olive-sided Flycatcher records 2018. Island Nature Trust, 14 recs.
8	Blaney, C.S.; Mazerolle, D.M. 2009. Fieldwork 2009. Atlantic Canada Conservation Data Centre. Sackville NB, 13395 recs.
8	Cameron-MacMillan, Maureen. 2020. Northern Goshawk Nests in Eastern Nova Scotia, as of November, 2020. Nova Scotia Department of Lands and Forestry.
8	Clayden, S.R. 1998. NBM Science Collections databases: vascular plants. New Brunswick Museum, Saint John NB, 19759 recs.
8	Doucet, D.A. 2007. Lepidopteran Records, 1988-2006. Doucet, 700 recs.
8	Hill, N.M. 1994. Status report on the Long's bulrush <i>Scirpus longii</i> in Canada. Committee on the Status of Endangered Wildlife in Canada, 7 recs.
8	Holder, M.L.; Kingsley, A.L. 2000. Kinglsey and Holder observations from 2000 field work.
8	King, Katie; Jean, Samuel. 2021. Black ash observations near Booklyn, NS. E.C. Smith Herbarium.
8	McRae, Daniel. 2023. PEI EcoGiftsSite Records for 2022. Pers. comm., 990 records.
8	O'Neil, S. 1998. Atlantic Salmon: Northumberland Strait Nova Scotia part of SFA 18. Dept of Fisheries & Oceans, Atlantic Region, Science. Stock Status Report D3-08. 9 recs.
8	Sollows, M.C. 2009. NBM Science Collections databases: molluscs. New Brunswick Museum, Saint John NB, download Jan. 2009, 6951 recs (2957 in Atlantic Canada).
7	Basquill, S.P. 2003. Fieldwork 2003. Atlantic Canada Conservation Data Centre, Sackville NB, 69 recs.
7	Belland, R.J. 2012. PEI moss records from Devonian Botanical Garden. DBG Cryptogam Database, Web site: https://secure.devonian.ualberta.ca/bryo_search.php 748 recs.
7	Benjamin, L.K. 2009. Boreal Felt Lichen, Mountain Avens, Orchid and other recent records. Nova Scotia Dept Natural Resources, 105 recs.
7	Burke, Lindsey. 2022. Species data recorded during the 2021 season at Prince Edward Island National Park. Parks Canada.
7	Cameron, B. 2006. <i>Hepatica americana</i> Survey at Scotia Mine Site in Gays River, and Discovery of Three Yellow-listed Species. Conestoga-Rovers and Associates, (a consulting firm), october 25. 7 recs.
7	Harding, R.W. 2008. Harding Personal Insect Collection 1999-2007. R.W. Harding, 309 recs.
7	Rock, J. 2020. Atlantic Canada Piping Plover field surveys: Nesting pairs by beach, 2018-2020. Environment and Climate Change Canada - Canadian Wildlife Service, 216 records.
6	Blaney, C.S. Miscellaneous specimens received by ACCDC (botany). Various persons. 2001-08.
6	Curley, F.R. 2007. PEF&W Collection. PEI Fish & Wildlife Div., 199 recs.
6	Gallop, John. 2021. Sheet Harbour rare lichen observations. McCallum Environmental.
6	Hall, R. 2008. Rare plant records in old fieldbook notes from Truro area. Pers. comm. to C.S. Blaney. 6 recs, 6 recs.
6	Klymko, J. 2019. Atlantic Canada Conservation Data Centre zoological fieldwork 2018. Atlantic Canada Conservation Data Centre.
6	Matthew Smith. 2010. Field trip report from Avon Caving Club outlining the discovery of <i>Cypridium arietinum</i> and <i>Hepatica nobilis</i> populations. Public Works and Government Services Canada.
6	Mazerolle, D.M. 2020. Atlantic Canada Conservation Data Centre botanical fieldwork 2019. Atlantic Canada Conservation Data Centre.
6	Neily, T.H. & Pepper, C.; Toms, B. 2020. Nova Scotia lichen database [as of 2020-05-25]. Mersey Tobeatic Research Institute, 668 recs.
6	Neily, T.H. Tom Neily NS Sphagnum records (2009-2014). T.H. Neily, Atlantic Canada Conservation Data Centre. 2019.
6	Nova Scotia Nature Trust. 2022. Ram's Head Lady Slipper observations from 2015 and 2019. , 6 records.
6	Richardson, D., Anderson, F., Cameron, R, Pepper, C., Clayden, S. 2015. Field Work Report on the Wrinkled Shingle lichen (<i>Pannaria lurida</i>). COSEWIC.
6	Sabine, D.L. 2013. Dwaine Sabine butterfly records, 2009 and earlier.
6	Speers, L. 2008. Butterflies of Canada database: New Brunswick 1897-1999. Agriculture & Agri-Food Canada, Biological Resources Program, Ottawa, 2048 recs.
6	Stevens, C. 1999. Cam Stevens field data from PEI vegetation plots. Sent along with specimens to C.S. Blaney. UNB masters research project, 732 recs.
6	White, S. 2019. Notable species sightings, 2018. East Coast Aquatics.
6	Zahavich, J.L. 2020. Canada Warbler, Olive-sided Flycatcher and Eastern Wood-Pewee observations, Prince Edward Island, 2017-2019. Island Nature Trust.
5	Carter, Jeff; Churchill, J.; Churchill, I.; Churchill, L. 2020. Bank Swallow colony Scots Bay, NS. Atlantic Canada Conservation Data Centre.
5	Daury, R.W. & Bateman, M.C. 1996. The Barrow's Goldeneye (<i>Bucephala islandica</i>) in the Atlantic Provinces and Maine. Canadian Wildlife Service, Sackville, 47pp.
5	Giberson, D. 2008. UPEI Insect Collection. University of Prince Edward Island, 157 recs.
5	Klymko, J.J.D.; Robinson, S.L. 2014. 2013 field data. Atlantic Canada Conservation Data Centre.
5	Majka, C.G. 2008. Lepidoptera at St Patricks, 1993-2007. Pers. comm. to R. Curley, 8 Jan. 29 recs, 29 recs.
5	Olsen, R. Herbarium Specimens. Nova Scotia Agricultural College, Truro. 2003.

# recs	CITATION
5	Pohl, G.P. Specimen data from Northern Forest Research Centre. Northern Forest Research Centre. 2022.
5	Smith, M.E.M. 2008. AgCan Collection. Agriculture Canada, Charlottetown PE, 44 recs.
5	Towell, C. 2014. 2014 Northern Goshawk and Common Nighthawk email reports, NS. NS Department of Natural Resources.
5	Walker, J. 2017. Bird inventories at French River, NS, and Memramcook, NB, for Nature Conservancy of Canada. Pers. comm. to AC CDC.
5	Webster, R.P. & Edsall, J. 2007. 2005 New Brunswick Rare Butterfly Survey. Environmental Trust Fund, unpublished report, 232 recs.
5	Wilhelm, S.I. et al. 2019. Colonial Waterbird Database. Canadian Wildlife Service.
4	Bagnell, B.A. 2001. New Brunswick Bryophyte Occurrences. B&B Botanical, Sussex, 478 recs.
4	Bredin, K.A. 2002. NS Freshwater Mussel Fieldwork. Atlantic Canada Conservation Data Centre, 30 recs.
4	Cameron, R.P. 2012. Rob Cameron 2012 vascular plant data. NS Department of Environment, 30 recs.
4	Canadian National Collection of Insects Arachnids, and Nematodes Bombus specimen database export. Government of Canada. 2022.
4	Forsythe, B. 2006. <i>Cypripedium arietinum</i> at Meadow Pond, Hants Co. Pers. comm. to C.S. Blaney. 4 recs, 4 recs.
4	Frittaion, C. 2012. NSNT 2012 Field Observations. Nova Scotia Nature Trust, Pers comm. to S. Blaney Feb. 7, 34 recs.
4	Mazerolle, D.M. 2016. Atlantic Canada Conservation Data Centre Fieldwork 2017. Atlantic Canada Conservation Data Centre.
4	McMullin, R.T. 2015. Prince Edward Island's lichen biodiversity and proposed conservation status in a report prepared for the province of PEI. Biodiversity Institute of Ontario Herbarium, University of Guelph, 776 records.
4	McNeil, J.A. 2020. Snapping Turtle and Eastern Painted Turtle records, 2020. Mersey Tobeatic Research Institute.
4	Mills, Pamela. 2007. <i>Iva frutescens</i> records. Nova Scotia Dept of Natural Resources, Wildlife Div. Pers. comm. to S. Basquil, 4 recs.
4	O'Neil, S. 1998. Atlantic Salmon: Eastern Shore Nova Scotia SFA 20. Dept of Fisheries & Oceans, Atlantic Region, Science. Stock Status Report D3-10. 4 recs.
4	Parks Canada. 2021. PEI National Park 2020 Species at Risk records. Parks Canada, 40 records.
4	Pike, E., Tingley, S. & Christie, D.S. 2000. Nature NB Listserve. University of New Brunswick, listserv.unb.ca/archives/naturenb. 68 recs.
4	Plissner, J.H. & Haig, S.M. 1997. 1996 International piping plover census. US Geological Survey, Corvallis OR, 231 pp.
4	Taylor, B.R., and Tam, J.C. 2012. Local distribution of the rare plant <i>Triosteum aurantiacum</i> in northeastern Nova Scotia, Canada. <i>Rhodora</i> , 114(960): 366-382.
3	Atlantic Canada Bank Swallow Working Group. 2022. 2021 Bank Swallow colony records. Birds Canada.
3	Benjamin, L.K. 2009. NSDNR Fieldwork & Consultants Reports. Nova Scotia Dept Natural Resources, 143 recs.
3	Brunelle, P.-M. (compiler). 2010. ADIP/MDDS Odonata Database: NB, NS Update 1900-09. Atlantic Dragonfly Inventory Program (ADIP), 935 recs.
3	Calhoun, J.C. Butterfly records databased at the McGuire Center for Lepidoptera and Biodiversity. Calhoun, J.C. 2020.
3	Cameron, R.P. 2012. Additional rare plant records, 2009. , 7 recs.
3	Chiasson, Roland. 2017. New Brunswick Breeding bird observations from NBWTF project. pers. comm. to J. Churchill.
3	Cody, W.J. 2003. Nova Scotia specimens of <i>Equisetum pratense</i> at the DAO herbarium in Ottawa. , Pers. comm. to C.S. Blaney. 4 recs.
3	Doubt, J. 2013. Email to Sean Blaney with Nova Scotia records of <i>Fissidens exilis</i> at Canadian Museum of Nature. pers. comm., 3 records.
3	e-Butterfly. 2018. Selected Maritimes butterfly records from 2016 and 2017. Maxim Larrivee, Sambo Zhang (ed.) e-butterfly.org.
3	Edsall, J. 2001. Lepidopteran records in New Brunswick, 1997-99. , Pers. comm. to K.A. Bredin. 91 recs.
3	Heron, J. 2022. Bombus records communicated to J. Klymko over email in autumn 2022. Pers. comm.
3	Klymko, J. Butterfly records at the Nova Scotia Museum not yet accessioned by the museum. Atlantic Canada Conservation Data Centre. 2017.
3	Klymko, J.J.D. 2011. Insect fieldwork & submissions, 2010. Atlantic Canada Conservation Data Centre. Sackville NB, 742 recs.
3	Mersey Tobeatic Research Institute. 2022. Nova Scotia Bobolink observations. pers. comm. to J. Churchill.
3	Neily, T.H. 2013. Email communication to Sean Blaney regarding <i>Listera australis</i> observations made from 2007 to 2011 in Nova Scotia. , 50.
3	Neily, T.H. Atlantic Canada Conservation Data Centre botanical fieldwork 2018. T.H. Neily, Atlantic Canada Conservation Data Centre.
3	Oldham, M.J. 2000. Oldham database records from Maritime provinces. Oldham, M.J; ONHIC, 487 recs.
3	Parker, M. 2016. Wood turtle (<i>Glyptemys insculpta</i>) Visual Surveys at Black, Wallace, Musquodobit and Sackville Rivers, Nova Scotia. East Coast Aquatics Inc., 3 records.
3	Sabine, D.L. <i>Bombus terricola</i> specimens in Dwayne Sabine's personal collection. pers. comm. 2022.
3	Speers, L. 2001. Butterflies of Canada database. Agriculture & Agri-Food Canada, Biological Resources Program, Ottawa, 190 recs.
3	Standley, L.A. 2002. <i>Carex haydenii</i> in Nova Scotia. , Pers. comm. to C.S. Blaney. 4 recs.
3	Thompson, R. 2018. Williamsdale Quarry Expansion Project, NS, Environmental Assessment rare plants. Dexter Construction Company Limited.
3	Tingley, S. (compiler). 2001. Butterflies of New Brunswick. , Web site: www.geocities.com/Yosemite/8425/buttrfly. 142 recs.
3	White, S. 2018. Notable species sightings, 2016-2017. East Coast Aquatics.
2	Amirault, D.L. 1997-2000. Unpublished files. Canadian Wildlife Service, Sackville, 470 recs.
2	Amirault, D.L. 2003. 2003 Peregrine Falcon Survey. Canadian Wildlife Service, Sackville, unpublished data. 7 recs.
2	Basquill, S.P., Porter, C. 2019. Bryophyte and lichen specimens submitted to the E.C. Smith Herbarium. NS Department of Lands and Forestry.
2	Basset, I.J. & Crompton, C.W. 1978. The Genus <i>Suaeda</i> (Chenopodiaceae) in Canada. <i>Canadian Journal of Botany</i> , 56: 581-591.
2	Boyne, A.W. & Grecian, V.D. 1999. Tern Surveys. Canadian Wildlife Service, Sackville, unpublished data. 23 recs.
2	Bredin, K.A. 2001. WTF Project: Freshwater Mussel Fieldwork in Freshwater Species data. Atlantic Canada Conservation Data Centre, 101 recs.
2	Cameron, B. 2005. <i>C. palmicola</i> , <i>E. pedicellatum</i> records from Sixth Lake. Pers. comm. to C.S. Blaney. 3 recs, 3 recs.
2	Cameron, R.P. 2009. Nova Scotia nonvascular plant observations, 1995-2007. Nova Scotia Dept Natural Resources, 27 recs.
2	Chapman, Cody. Unreported Species at Risk Records across Nova Scotia. Chapman, Cody, 5 records.
2	COSEWIC (Committee on the Status of Wildlife in Canada). 2013. COSEWIC Assessment and Status Report on the Eastern Waterfan <i>Peltigera hydrothyria</i> in Canada. COSEWIC, 46 pp.
2	de Graaf, M.; Miller, D. 2020. Records of <i>Cypripedium reginae</i> and <i>Equisetum variegatum</i> from CFI property at Scoudouc Road and <i>Symplocarpus foetidus</i> from CFI properties at Upper Cape, Westmorland County, NB. pers. comm. (ed.) Community Forests International, 4 records.
2	Dibblee, R.L. 1999. PEI Cormorant Survey. Prince Edward Island Fisheries, Aquaculture & Environment, 1p. 21 recs.

# recs	CITATION
2	Giroux, P. 2013. Personal communication concerning species at risk in and around PEI NP, PE. Winter 2013. Pers. comm.
2	Harris, P. 2004. Plant records from 1997-2003. Island Nature Trust, Charlottetown PE, 71 recs.
2	Hill, Nick. 2021. <i>Fraxinus nigra</i> observations at Marshy Hope. Fern Hill Institute of Plant Conservation.
2	Kelly, G. 2005. <i>Fraxinus nigra</i> . Dept of Agriculture, Fisheries, Aquaculture & Forestry. Pers. comm. to C.S. Blaney, Mar. 2, 11 recs.
2	Klymko, J.J.D. 2010. Miscellaneous observations reported to ACCDC (zoology). Pers. comm. from various persons, 3 recs.
2	LaPaix, R.; Parker, M. 2013. email to Sean Blaney regarding <i>Listera australis</i> observations near Kearney Lake. East Coast Aquatics, 2.
2	Layberry, R.A. 2012. Lepidopteran records for the Maritimes, 1974-2008. Layberry Collection, 1060 recs.
2	Macaulay, M. Notes on newly discovered <i>Hepatica nobilis</i> var. <i>obtusata</i> population in Cumberland Co. NS. Pers. comm. to S. Blaney, 1 rec.
2	Mazerolle, D.M. 2005. Bouctouche Irving Eco-Centre rare coastal plant fieldwork results 2004-05. Irving Eco-centre, la Dune du Bouctouche, 174 recs.
2	Mazerolle, David. 2021. Botanical fieldwork 2019-20200. Parks Canada.
2	McAlpine, D.F. New Brunswick Museum bee specimens. New Brunswick Museum. 2013.
2	McMullin, R.T.; van Miltenburg, N.; Atkinson, K.-L.; Ayles, P. 2022. A Provisional List of the Lichens and Allied Fungi of Prince Edward Island National Park. Canadian Museum of Nature, 37 pp.
2	McNeil, J.A. 2019. Snapping Turtle records, 2019. Mersey Tobeatic Research Institute.
2	Munro, M. 2003. <i>Caulophyllum thalictroides</i> & <i>Carex hirtifolia</i> at Herbert River, Brooklyn, NS. , Pers. comm. to C.S. Blaney. 2 recs.
2	Munro, M. 2003. <i>Dirca palustris</i> & <i>Hepatica nobilis</i> var. <i>obtusata</i> at Cogmagun River, NS. , Pers. comm. to C.S. Blaney. 2 recs.
2	Neily, T.H.; Smith, C.; Whitman, E. 2011. NCC Logging Lake (Halifax Co. NS) properties baseline survey data. Nature Conservancy of Canada, 2 recs.
2	Neily, Tom. 2020. Lichen surveys for PEI Forested Landscapes Priority Place. Chapman, C.J. (ed.) Atlantic Canada Conservation Data Centre, 158 records.
2	Newell, R. E., MacKinnon, C. M. & Kennedy, A. C. 2006. Botanical Survey of Boot Island National Wildlife Area, Nova Scotia, 2004. Canadian Wildlife Service, Atlantic Region, Technical Report Series Number 450. 3 recs.
2	Newell, R.E. 2006. Rare plant observations in Digby Neck. Pers. comm. to S. Blaney, 6 recs.
2	Robinson, S.L. 2010. Fieldwork 2009 (dune ecology). Atlantic Canada Conservation Data Centre. Sackville NB, 408 recs.
2	Robinson, S.L. 2011. 2011 ND dune survey field data. Atlantic Canada Conservation Data Centre, 2715 recs.
2	Shafer, A.B.A., D.T. Stewart. 2006. A Disjunct Population of <i>Sorex dispar</i> (Long-Tailed Shrew) in Nova Scotia. Northeastern Naturalist, 13(4): 603-608.
1	Amirault, D.L. 2000. Piping Plover Surveys, 1983-2000. Canadian Wildlife Service, Sackville, unpublished data. 70 recs.
1	Amirault, D.L. 2005. 2005 Peregrine Falcon Survey. Canadian Wildlife Service, Sackville, unpublished data. 27 recs.
1	Amiro, Peter G. 1998. Atlantic Salmon: Inner Bay of Fundy SFA 22 & part of SFA 23. Dept of Fisheries & Oceans, Atlantic Region, Science Stock Status Report D3-12. 4 recs.
1	Barney, T. 2020. Text message to Sean Blaney from Ted Barney with photograph of large Snapping Turtle at White Birch Impoundment, Westmorland Co., NB. pers. comm., 1 record.
1	Basquill, S. P. 2008. Nova Scotia Dept of Natural Resources.
1	Basquill, S.P. 2009. 2009 field observations. Nova Scotia Dept of Natural Resources.
1	Basquill, S.P. 2010. Plant data from Prince Edward Island National Park Forest Community Plots. Atlantic Canada Conservation Data Centre, 150 records.
1	Basquill, S.P. 2012. 2012 Bryophyte specimen data. Nova Scotia Department of Natural Resources, 37 recs.
1	Bateman, M.C. & Prescott, W.H. 1984. The Mammals of Prince Edward Island National Park. Canadian Wildlife Service, vol 2:5. 3 recs.
1	Belliveau, A.G. E.C. Smith Herbarium Specimen Database 2019. E.C. Smith Herbarium, Acadia University. 2019.
1	Benjamin, L.K. 2003. <i>Cypridium arietinum</i> in Cogmagun River NS. Pers. comm. to S. Blaney, 1 rec.
1	Blaney, C.S. 2014. 2014 Bank Swallow colony observation, Westcock, NB. Atlantic Canada Conservation Data Centre.
1	Bonnyman, Vanessa. 2021. Eastern Wood-Pewee Observation on Bonshaw Trail, PEI.
1	Brazner, John; MacKinnon, Frances. 2020. Relative conservation value of Nova Scotia's forests: forested wetlands as avian biodiversity hotspots. Canadian Journal of Forest Research, 50(12): 1307-1322. dx.doi.org/10.1139/cjfr-2020-0101.
1	Bruce, J. 2014. 2014 Wood Turtle email report, Nine Mile River, NS. NS Department of Natural Resources.
1	Cairns, D. 1998. Atlantic Salmon: Prince Edward Island SFA 17. Dept of Fisheries & Oceans, Atlantic Region, Science. Stock Status Report D3-07. 1 rec.
1	Christie, D.S. 2000. Christmas Bird Count Data, 1997-2000. Nature NB, 54 recs.
1	Clayden, S.R. 2006. <i>Pseudevernia cladonia</i> records. NB Museum. Pers. comm. to S. Blaney, Dec, 4 recs.
1	Clayden, S.R. 2007. NBM Science Collections databases: vascular plants. New Brunswick Museum, Saint John NB, download Mar. 2007, 6914 recs.
1	Clayden, S.R. 2020. Email to Sean Blaney regarding <i>Pilophorus cereus</i> and <i>P. fibula</i> at Fidele Lake area, Charlotte County, NB. pers. comm., 2 records.
1	Creaser, Alissa & Belliveau, Alain <i>Bombus</i> specimens collected in Wolfville, Nova Scotia, in July 2022. E.C. Smith Herbarium. 2022.
1	Crowell, A. 2004. <i>Cypridium arietinum</i> in Weir Brook, Hants Co. Pers. comm. to S. Blaney, 1 rec.
1	Curley, F.R. 2003. Glen Kelly records for <i>Betula pumila</i> & <i>Asclepias syriaca</i> on PEI. , Pers. comm. to C.S. Blaney. 9 recs.
1	Curley, F.R. 2021. <i>Nymphalis l-album</i> record from near Belfast PEI. Pers. comm. to J. Klymko.
1	Day, R. & Catling, P.M. 1991. The Rare Vascular Plants of Prince Edward Island, 1st Ed. Canadian Museum of Nature, Ottawa. Syllogeus. 67.
1	Docherty, Joanne. 2022. Phone call to John Klymko about <i>Danaus plexippus</i> observation in Nova Scotia. Personal communication.
1	Doucet, D.A. 2007. PEI National Park Odonata Survey. Parks Canada, PEI National Park, 1 rec.
1	Doucet, D.A. ACCDC Reference Collection. Atlantic Canada Conservation Data Centre, Sackville NB. 2008.
1	Eastman, A. 2019. Snapping Turtle observation at Brookfield, Colchester Co. NS. Halifax Field Naturalists Nova Scotia Nature Archive Facebook Page, 1 record.
1	Elizabeth Spence. 2020. Email from Elizabeth Spence to John Klymko about the occurrence of a Wood Turtle in Westmorland County, New Brunswick. Pers. comm.
1	Gerriets, S.H. 1997-2001. Element Occurrence Database. Atlantic Canada Conservation Data Centre, Sackville NB, 1 rec.
1	Golder Associates Ltd. 2021. Black Ash location from Goff's Quarry Expansion Environment Assessment, 2017. Golder Associates Ltd., 1 record.
1	Harling, L. & Silva, M. 2004. Abundance & species richness of shrews within forested habitats on PEI. Am. Midl. Nat., 151:399-407. 2 recs.
1	Harris, Megan. 2018. Miscellaneous <i>Sorex palustris</i> record. Pers. comm. to S. Blaney.
1	Haughian, S.R. 2018. Description of <i>Fuscopannaria leucosticta</i> field work in 2017. New Brunswick Museum, 314 recs.

# recs	CITATION
1	Hill, N.M. 2021. Observation of <i>Carex haydenii</i> and black ash near Marshy Hope and Ponhook Lake. pers. comm.
1	Hinds, H.R. 1986. Notes on New Brunswick plant collections. Connell Memorial Herbarium, unpubl, 739 recs.
1	Hinds, H.R. 1989. Greenwich, Blooming Point plant collections in Plant locations. Pers. Comm. to Robin Day (Ag. Can). 2pp, 8 recs, 8 recs.
1	Honeyman, K. 2019. Unique Areas Database, 2018. J.D. Irving Ltd.
1	iNaturalist.ca. 2022. iNaturalist records 2022. iNaturalist.ca (ed.) iNaturalist.org; iNaturalist.ca, Web site: 3 recs.
1	Jacques Whitford Ltd. 2003. Cananda Lily location. Pers. Comm. to S. Blaney. 2pp, 1 rec, 1 rec.
1	Jardine, Don. 2022. Email to AC CDC reporting an Evening Grosbeak Sighting in Winsloe South, PEI. pers. comm.
1	Kelly, Glen 2004. Botanical records from 2004 PEI Forestry fieldwork. Dept of Environment, Energy & Forestry, 71 recs.
1	Klymko, J. Henry Hensel's Butterfly Collection Database. Atlantic Canada Conservation Data Centre. 2016.
1	Klymko, J. Partial database of the Agriculture Canada Charlottetown Research Station Insect Collection butterfly specimens. Atlantic Canada Conservation Data Centre. 2016.
1	Klymko, J.J.D. 2012. Insect field work & submissions. Atlantic Canada Conservation Data Centre, 852 recs.
1	Lautenschlager, R.A. 2010. Miscellaneous observations reported to ACCDC (zoology). Pers. comm. from various persons, 2 recs.
1	Lautenschlager, R.A. 2020. Email to John Klymko about fisher sighting in Baie Verte. Klymko, J. (ed.) Lautenschlager, R.A., pers. comm.
1	MacAuley, M. 2008. Email to Sean Blaney regarding rich hardwood floodplain site at Howards Pool, Wallace River, NS.
1	MacAuley, M. 2020. Email to Sean Blaney regarding <i>Agalinis paupercula</i> var. <i>parviflora</i> at Malagash Station, NS. pers. comm., 2 records.
1	MacPhail, V. Bee and syrphid specimens from MSc research. Pers. comm., J. Klymko. 2006.
1	Majka, C.G. & McCorquodale, D.B. 2006. The Coccinellidae (Coleoptera) of the Maritime Provinces of Canada: new records, biogeographic notes, and conservation concerns. <i>Zootaxa</i> . <i>Zootaxa</i> , 1154: 49–68. 7 recs.
1	Mazerolle, D. 2003. Assessment of Seaside Pinweed (<i>Lechea maritima</i> var. <i>subcylindrica</i>) in Southeastern New Brunswick. Irving Eco-centre, la Dune du Bouctouche, 18 recs.
1	Morrison, Annie. 2010. NCC Properties Fieldwork: June-August 2010. Nature Conservancy Canada, 508 recs.
1	Nature Conservancy Canada, Prince Edward Island. 2022. NCC PEI 2022 occurrence data. NCC PEI. Pers. comm., 214 records.
1	Neily, P.D. Plant Specimens. Nova Scotia Dept Natural Resources, Truro. 2006.
1	Neily, T.H. & Pepper, C.; Toms, B. 2019. Boreal Felt Lichen Observation, April 2019. Mersey Tobeatic Research Institute.
1	Neily, T.H. 2004. <i>Hepatica nobilis</i> var. <i>obtusa</i> record for Falmouth NS. Pers. comm. to C.S. Blaney, 1 rec.
1	Neily, T.H. 2013. Email communication to Sean Blaney regarding <i>Agalinis paupercula</i> observations made in 2013 in Nova Scotia. , 1 rec.
1	Newell, R.E. 2004. <i>Hepatica nobilis</i> var. <i>obtusa</i> record. Pers. comm. to S. Blaney, 1 rec.
1	Oehlke, W. 1999. Record of <i>Polygonia satyrus</i> from Prince Edward Island. http://www.silkmoths.bizland.com/ppsatyr.htm .
1	Parker, M. 2018. East Coast Aquatics ACCDC 2018 Report. East Coast Aquatics, 12 records.
1	Payzant, P. 2018. Satyr Comma record from Bible Hill, NS. https://novascotiabutterflies.ca .
1	Popma, K. 2001. Phalarope & other bird observations in Westmorland Co. , Pers. comm. to K.A. Bredin. 5 recs.
1	Prince Edward Island National Park. 2014. Prince Edward Island National Park Herbarium. Parks Canada Agency, PEINP, 39 recs.
1	Quigley, E.J. 2021. Email to Sean Blaney regarding Eastern White Cedar (<i>Thuja occidentalis</i>) stand near Shinimicas Bridge. NSDLF, 1 record.
1	Robinson, C.B. 1907. Early intervale flora of eastern Nova Scotia. <i>Transactions of the Nova Scotia Institute of Science</i> , 10:502-506. 1 rec.
1	Sabine, M. 2016. Black Ash records from NB DNR permanent forest sampling Plots. New Brunswick Department of Natural Resources, 39 recs.
1	Sabine, M. 2016. NB DNR staff incidental Black Ash observations. New Brunswick Department of Natural Resources.
1	Scott, F.W. 1988. Status Report on the Southern Flying Squirrel (<i>Glaucomys volans</i>) in Canada. Committee on the Status of Endangered Wildlife in Canada, 2 recs.
1	Shortt, R. UNB specimen data for various tracked species formerly considered secure. Connell Memorial Herbarium, UNB, Fredericton NB. 2019.
1	Skevington, Jeffrey H. 2020. Syrphid records used for the Field Guide to the Flower Flies of Northeastern North America. Canadian National Collection of Insects.
1	Sollows, M.C. 2008. NBM Science Collections databases: herpetiles. New Brunswick Museum, Saint John NB, download Jan. 2008, 8636 recs.
1	Spicer, C.D. 2004. Specimens from CWS Herbarium, Mount Allison Herbarium Database. Mount Allison University, 5939 recs.
1	Stephen Freeman. 2022. New location for Black Ash in Queens County, NS. Personal communication, 2.
1	te Raa, J. 2016. <i>Island Naturalist</i> . <i>Nature PEI</i> , 219.
1	Thomas, H.H., Jones, G.S. & Diblee, R.L. 1980. <i>Sorex palustris</i> on Prince Edward Island. <i>Can. Field Nat.</i> , vol 94:329-331. 2 recs.
1	Williams, M. Cape Breton University Digital Herbarium. Cape Breton University Digital Herbarium. 2013.
1	Wilson, G. 2013. 2013 Snapping Turtle email report, Wentworth, NS. Pers. comm.
1	Zahavich, J. 2017. Canada Warbler and Olive-sided Flycatcher records 2017. Island Nature Trust, 14 recs.