


# National Tropical Botanical Garden

Annual Report 2016





**ON THE COVER:** *EUPHORBIA ELEANORIAE* WAS DISCOVERED IN 1991 AND DESCRIBED AND NAMED BY DAVID LORENCE AND WARREN WAGNER IN 1996. ENDEMIC TO THE ISLAND OF KAUA'I, IT WAS NAMED FOR ELEANOR CRUM, A FORMER NTBГ TRUSTEE AND STAUNCH SUPPORTER OF BOTANICAL RESEARCH. PHOTO BY KEN WOOD



## Message from Thomas D. Hewitt

Aloha from the headquarters of the National Tropical Botanical Garden (NTBG), perched on a cliff overlooking the breathtaking Lawa‘i Valley on the island of Kaua‘i, Hawai‘i.

I often ask people what energizes, excites and consequently galvanizes them to action benefiting tropical plant conservation. The letters EEG also form an acronym for a test of brain activity. I can speak from personal experience that my brain activity reaches a peak when I visit the magnificent gardens of the National Tropical Botanical Garden.

I speak of Gardens in the plural because we have three gardens on Kaua‘i, one on Maui, and one in Miami, our beautiful garden in Florida, that was once the home of renowned plant explorer Dr. David Fairchild. Each of these amazing gardens is unique and special and is much more than a collection of ornamental plants. Our gardens conserve our living collection of endangered tropical plant species. It is where we grow endangered tropical plants to re-establish populations in the wild. It is where scientists from around the world come to study tropical plant diversity and this is where our visitors learn about the fundamental importance of plants, tropical plant conservation, and plant research that may reveal the next cancer drug or, as in the case of breadfruit, help alleviate hunger.

I hope that you will visit us on Kaua‘i, Maui, and in Florida, where you will experience the sensory bonanza that makes my brain activity soar. Thank you for your support of tropical plant conservation and the National Tropical Botanical Garden.

Mahalo nui loa,

Tom Hewitt, Chairman of the Board of Trustees

*Tom Hewitt*



## Message from Chipper Wichman

The year 2016 was a monumental one for conservation globally as the World Conservation Congress (WCC) of the International Union for Conservation of Nature (IUCN) convened in Hawai'i. With over 10,000 delegates from 192 countries, it was the largest and most diverse conservation meeting the world has ever seen. NTBG proudly led the eight-year effort to bring the WCC to the United States for the first time in the IUCN's 68 year history and watching it unfold over ten days in September was phenomenal. Hawai'i was the ideal place to host this global event because of the incredible biodiversity that exists here as well as the vibrant indigenous Hawaiian culture that is a foundation for much of the conservation work across the Hawaiian Islands.

The world has come to recognize that the most successful conservation efforts are those that conserve both biodiversity and indigenous cultures while employing traditional cultural knowledge. As a result the term "biocultural conservation" became mainstream at the 2016 WCC and was repeated by both keynote speakers as well as delegates from every corner of our planet.

For the past 20 years, NTBG has been the 'tip of the spear' in biocultural conservation in Hawai'i where we have grown one of the most celebrated and successful community-based biocultural conservation programs in the state at Limahuli Garden and Preserve on the north shore of Kaua'i. The conservation work we do at Limahuli takes us from the very top of the watershed at 3,330 feet into a cloud forest all the way down to sea level and out to a nearshore fishery. That fishery was the first in Hawai'i to be given the state's Community Based Subsistence Fishery Area designation. Underpinning this integrated resource management program is a robust understanding of both scientific and traditional cultural knowledge, which informs our activities and drives our goals and management objectives.

This biocultural conservation philosophy is not only limited to Limahuli. It also drives our programs and sparks change at Kahanu Garden and Preserve on Maui, where we manage some of the most important cultural sites in Hawai'i, as well as at McBryde Garden on the South Shore of Kaua'i, where we grow the majority of our rare and endangered plants.

Being the tip of the spear means we have to continue to innovate and change, so we are fortunate to have some of the most talented and dedicated employees working to help us fulfill these goals every day. As you read this 2016 Annual Report, I believe you will get a glimpse of their passion and commitment that ultimately drives our success as an organization.

Chipper Wichman, President, Director, and Chief Executive Officer



# Introduction

Aloha! Welcome to our Annual Report where we invite you to join us as we highlight some of our many achievements in 2016, a most exciting and dynamic year for our organization. Here you can learn about our five garden locations in Hawai'i and Florida as well as the preserves we manage and programs we operate. From science, conservation, discovery, and education, to our stunning tropical living collections, our public outreach efforts, and critical work collecting rare and endangered plants and preserving plant DNA, the National Tropical Botanical Garden continues to be a leader in tropical botany, rough terrain field exploration, scientific research, and education related to plant sciences.

Within this Annual Report you will also find the names of our many dedicated supporters and partners, from our deeply committed Board of Trustees, Council of Fellows and members to our generous donors and volunteers who all play a vital role in helping us fulfill our mission. This report also shares key financial data that reflects our organization's fiscal activities and assets as well as updates on the Garden's many activities, initiatives, and partnerships.

At the National Tropical Botanical Garden we are wholly committed to saving plants whether it's exploring steep cliffs, botanizing in rugged valleys, or collecting seeds in the forests of remote Pacific islands. NTBG also places great value on our partnerships, collaborations, and relationships with other like-minded organizations and the communities in which we live and work. In these pages you will find a summary of the educational workshops and classes, public tours and other activities we offer in our five gardens.

Saving plants is at the very core of our mission and each of us recognizes the central role that plants play in our world. We recognize that no matter who we are or where we call home, each of us, like all other living creatures on Earth, needs plants. As a non-profit organization and the first and only botanical garden to have been chartered by the United States Congress, we rely on your enthusiastic support for helping us continue to save plants.

With heartfelt appreciation, we offer you our gratitude.





# IUCN World Conservation Congress

In September 2016, the International Union for Conservation of Nature (IUCN) held its quadrennial World Conservation Congress (WCC) in Hawai‘i. It was the first time in its 68-year history that the WCC was hosted by the United States. What began in 2008 as a dream for NTBG Director and CEO Chipper Wichman and several partners, evolved from the realm of impossible to being a long shot and then finally inevitable.

Throughout this incredible journey, Chipper played a central role in Hawai‘i’s unlikely bid to host the world’s largest conservation gathering. As co-chair of Hawai‘i’s WCC Steering Committee, Chipper strived to maximize this once-in-a-lifetime chance for NTBG, Hawai‘i, and the United States to engage with the conservation community on a global scale.

The 2016 World Conservation Congress, Planet at a Crossroads, opened on September 1 in Honolulu with much excitement and anticipation following President Barack Obama’s announcement that he was quadrupling the size of the Papahānaumokuākea Marine National Monument in the Northwestern Hawaiian Islands, making it the largest marine protected area in the world.



The opening ceremony was attended by thousands of delegates from scores of countries around the world, along with foreign dignitaries and heads of state, as well as U.S. federal agencies like the National Park Service. Also in attendance were U.S. Secretary of the Interior Sally Jewel, Hawai'i's U.S. Senator Brian Schatz, Hawai'i Governor David Ige, and thousands of scientists, academics, indigenous and cultural practitioners, and conservation leaders.

What followed was the most diverse and best attended Congress in IUCN history, bringing together more than 10,000 delegates representing governments, civil society, indigenous communities, spiritual leaders, the private sector, and academia for ten days of symposia, meetings, workshops, discussions, and exchanges.

An important component of Hawai'i's Congress was the recognition, celebration, and discussion of the vital role of indigenous knowledge in conservation. That recognition of the value of biocultural conservation was evident from the prominent role of Hawaiian culture throughout the Congress, meetings and discussions centered on indigenous perspectives, motions passed in support of indigenous people and sacred places, and the large number of indigenous delegates from around the world.

Among the many globally transformative outcomes of the 2016 WCC was a document called "The Hawai'i Commitments," which was intended to identify challenges and solutions related to core conservation issues including climate change, habitat loss, wildlife trafficking, and environmental degradation and pollution.

The Commitments came on the heels of the Paris Agreement, the UN Sustainable Development Goals, and other international charters adopted in a spirit of cooperation and partnership, with the goal of advancing conservation and protecting life on the planet.





# 2016 IUCN World Conservation Congress by the Numbers

**1948**

First IUCN WCC held in Fontainebleau, France

**2016**

First-ever WCC hosted by the United States held in Hawai'i (Sept. 1-10)

**8**

Number of years NTBG campaigned to host the WCC in Hawaii

**28,000**

Native plants & animals in Hawaii

**90%**

Endemic Hawaii plants & animals

**192**

Countries  
represented at  
2016 WCC in  
Hawaii

**28%**

of all threatened  
and endangered  
species in the  
U.S. found only in  
Hawai'i

**27**

NTBG staff in  
attendance  
at WCC

**10,300**

Delegates from  
around the world

**30%**

of Hawai'i's  
highest priority  
watershed to  
be protected by  
2030

**200**

NTBG Donors,  
Fellows, and VIPs  
in attendance at  
WCC

**106**

Resolutions  
passed by  
IUCN Members'  
Assembly

**30%**

of Hawai'i's  
marine resources  
to be effectively  
managed by  
2030





# Science and Conservation

Science and Conservation are at the heart of the NTBG's mission "to enrich life through discovery, scientific research, conservation, and education..." Among the Science and Conservation (Sci-Con) Department's most vital roles is the discovery of new plant species and publication of these discoveries. In 2016 Sci-Con staff published descriptions for two new Hawaiian plant taxa discovered by our field staff: *Coprosma kawaikiniensis*, a rare tree in the Rubiaceae (coffee family) endemic to the island of Kaua'i, and *Melicope oppenheimeri*, a rare tree in the Rutaceae (citrus family) endemic to East Maui. Both species are localized and listed as Critically Endangered by the IUCN Red List of Threatened Species.



## Our herbarium continues to grow and now holds 79,647 specimens.

In 2016, Sci-Con department staff also rediscovered *Lysimachia scopulensis*, a member of the Primulaceae (primrose) family, endemic to Kaua'i, that had not been observed since 1998. Since its rediscovery, we have successfully cultivated this single island endemic at our Conservation and Horticulture Center.

In addition to our Hawai'i fieldwork, three NTBG staff — Director of Science and Conservation Dr. David Lorence, Field Biologist Ken Wood, and Herbarium Manager Tim Flynn — took part in a six-week expedition to Samoa. Sci-Con staff botanized in under-explored areas on 'Upolu and Savai'i islands. During the expedition, team members rediscovered populations of two rare species: a member of the hibiscus family, *Abutilon whistleri*, not seen since 1971, and a rare fern, *Botrychium daucifolium*, last seen in the 1890s.

The NTBG team worked with collaborators from the Samoan Ministry of Natural Resources and Environment and collected 877 vascular and non-vascular plants (2,631 total herbarium specimens including duplicates), which were sent to our herbarium for processing, identification, study, and eventual distribution to other institutions. The specimens and information will contribute to completion of the Flora of Samoa project being written by Senior McBryde Research Fellow Dr. W. Arthur Whistler.

In 2016 Sci-Con staff also attended the American Public Gardens Association meetings in Miami where Dr. Lorence organized and moderated a

60-minute IUCN Red Listing panel session with collaborators, while Conservation Biologist Seana Walsh gave a panel session presentation.

In September, Sci-Con staff participated in the IUCN World Conservation Congress in Honolulu where they co-organized and moderated, talks, presentations, and an eight-hour session on Red Listing with IUCN staff, Red List trainers, and colleagues. On Kaua'i, Science and Conservation Specialist Margaret Clark played an instrumental role in the planning of the Kaua'i Conservation Expo and Expeditions that followed the WCC. Sci-Con staff were stationed at our booth during this post-Congress expo, interacting with participants and sharing our work.

Our herbarium continues to grow and now holds 79,647 specimens. The majority of specimens acquired in 2016 were collected by our staff in Samoa, with the remainder from Hawai'i and as gifts received for identification or on exchange.

Finally, in 2016, *The Flora of the Cook Islands* by New Zealand botanist W. R. "Bill" Sykes was published jointly by NTBG, the Smithsonian Institution, and Landcare Research (New Zealand) with funding from the International Association for Plant Taxonomy (IAPT). NTBG also published Volume 15 of our in-house journal *Allertonia*, titled "Tales of the Solomons" by the late Prof. E.J.H. Corner.









# Living Collections and Horticulture

As a botanical garden, NTBG's work includes the development, curation, and management of our living collections. A central component of this is the ability to record, inventory, and monitor the number, type, and location of all the plants and plant material we grow. When combined, in 2016 we produced 10,995 plantouts (plants grown by NTBG and planted outside our main nursery) for our five garden locations, preserves, and restorations. This was nearly 4,000 more plants than in 2015.

## NTBG's nursery inventory surpassed 1.3 million plants and started seeds by the end of 2016.

In 2016, NTBG produced 18,652 plants to be used by conservation partners in state programs, research, education, and other restoration projects, or for outreach efforts like the Arbor Day plant giveaway. Of those, nearly 2,500 of them were federally listed as threatened or endangered. In total, NTBG's nursery inventory surpassed 1.3 million plants and started seeds by the end of 2016.

As part of our ongoing efforts to ensure the accuracy and integrity of our plant records and related documentation, we undertook several large projects that reviewed and updated our living collections records.

Among the most significant of our Living Collections efforts was a Trustee-supported palm curation project undertaken by NTBG staff and the renowned palm authority Dr. John Dransfield. Working together, they verified 277 palm species representing 2,346 trees in the living collections. ID tags were inspected, missing tags were replaced, and vital plant records (some 30 years old) were updated. Like the palm project, NTBG's cycad curation project also made progress with new and updated plant ID tags and records expanded.

With conservation at the core of our mission, collecting and growing rare and endangered plants – especially native species – is vital for our living collections. In 2016 we made important progress on collecting and growing *Polyscias bisattenuata* and *Alectryon macrococcus* ssp. *micrococcus*. Both trees are endemic to Kaua'i and wild populations are in danger of collapsing. In the case of *Alectryon*, air layers were set on sterile trees.

*Polyscias* work involved bagging immature fruit in the wild in order to avoid rat predation. Field staff made multiple visits to the roughly 40 known remaining wild trees to gather fruit that has produced over 6,000 seedlings. NTBG will establish ex situ collections in our four Hawai'i gardens while also collaborating with private land owners. We are also cooperating with state agencies to establish in situ ("in the wild") populations.









# Breadfruit Institute

Established in 2003, the Breadfruit Institute promotes the conservation, study, and use of breadfruit for food and reforestation. The Institute is the global leader in efforts to conserve and use breadfruit diversity to support regenerative agriculture, agroforestry, food security, and income generation for smallholder farmers in the tropics. The Institute manages the world's largest repository of breadfruit diversity with more than 150 varieties, including some that are rare or extinct in their homelands.

In 2016, Breadfruit Institute staff made significant advances in managing and curating the 350 breadfruit trees at Kahanu Garden and McBryde Garden. Dan Rudoy, the institute's Collection Manager, a specialist in organic, holistic, and regenerative farming practices, began using regenerative practices intended to substantially enhance the health and vitality of the collection. On Kaua'i, the McBryde Garden Breadfruit Research Orchard underwent a detailed assessment followed by the implementation of management strategies and measures to promote the health and stability of the trees.

## In 2016, nineteen countries received 29,000 breadfruit trees through the institute's Global Hunger Initiative.

The Breadfruit Institute is based in Hawai'i, but its impact is felt around the world. In 2016, 19 countries received 29,000 breadfruit trees through the institute's Global Hunger Initiative, with nearly 1,000 trees distributed in Hawai'i. Six countries—Cuba, Grenada, Guyana, Suriname, Uganda, and Vietnam—received trees for the first time. This initiative was launched in 2009 in partnership with Cultivaris, LLC (Global Breadfruit) to respond to critical global food security issues by expanding plantings of elite breadfruit varieties in tropical regions. Close to 100,000 trees have been sent to 43 countries.

A signature aspect of the initiative is recognizing indigenous rights and supporting conservation of breadfruit diversity through benefit-sharing agreements. NTBG receives a royalty for trees sold by Global Breadfruit and shares that royalty 50/50 with the country of origin. In October 2016, a second Memorandum of Understanding was formally signed by Samoa's Prime Minister.

Our Director of Global Initiatives, Roger Still, is forging new relationships with hunger-relief and conservation partners in Hawai'i, West Africa, and the Caribbean that will expand the use of breadfruit across the tropics as an integral part of regenerative agriculture systems.

In addition to the Global Hunger Initiative, over 10,000 breadfruit trees were distributed 2012-2015 throughout Hawai'i through our Plant a

Tree of Life – Grow 'Ulu project. Marin Lysák, a Ph.D. Fellow at the University of Copenhagen, is researching options for adapting to the negative effects of climate change for food and nutrition security by increasing crop diversity with breadfruit. She continues to work closely with the Institute.

We are also discussing how to further maximize breadfruit's full potential through ongoing discussions with the Ulupono Initiative and Patagonia Provisions on projects involving breadfruit agroforestry certification standards, demonstration plantings in the McBryde Garden, and more.

Beyond the Garden, institute staff participated in the International Union for the Conservation of Nature's World Conservation Congress, starting on Maui at the Indigenous Crops Biodiversity Festival and continuing with the Congress on O'ahu, and the Kaua'i Conservation Expo. Staff also participated in the Global Breadfruit Summit on O'ahu and the Hawai'i Tropical Fruit Growers Association Annual meeting on Kaua'i.

In 2016, the institute's Director, Dr. Diane Ragone, was awarded the Garden Club of America's Medal of Honor for her outstanding service to horticulture and breadfruit. "Her work is in every sense the epitome of the best in horticulture: quest for knowledge, preservation, conservation, research, creative experimentation, sharing, mentoring and fulfilling a humanitarian mission," said the GCA in honoring Ragone for her work with the institute.









# Education

For more than half a century, education has been at the forefront of NTBG's work and is central to our mission. Making use of our five gardens, preserves, and facilities like our Conservation and Horticulture Center and Botanical Research Center, as well as our staff and partners, NTBG has the capacity to instruct, inform, and inspire a broad range of people, from young children to world class researchers.

One of our education goals is for every student in each of our local communities on Kauai to visit NTBG. And while our formal education programs served more than 2,500 K-12 students in 2016, we also provided plant- and science-based education to students at every level and age, from primary and secondary to undergraduate through postgraduate, as well as interns, medical professionals, journalists, artists, garden enthusiasts, science teachers and educators of all type, and members of the general public.



NTBG embraces the concept of “garden as classroom,” and makes maximum use of its indoor resources and outdoor living collections as the basis for educational programs that are aligned with Hawai‘i’s Department of Education standards. In recognition of the importance of STEM (science, technology, engineering, and math) education, NTBG offers learning opportunities in botany, horticulture, and the natural sciences.

Summer and after-school programs like Keiki o ka ‘Āina Youth Enrichment on Kaua‘i, Kūlia I Ka Pono on Maui, and the Barnyard enrichment program at The Kampong in Florida, as well as other classes conducted in our gardens, served over 1,600 students in 2016.

Beyond following the traditional student-teacher paradigm, we make use of our staff, interns, and outside partners and experts to leverage the full potential of our collections, resources, experience, and expertise. By imparting knowledge to teachers, professors, journalists, artists, or conservation

professionals, we achieve our goals when they “teach it forward” through their own lessons, articles, and reports, or through the art they exhibit, broadening our reach beyond what would be otherwise possible.

One thing that makes NTBG special is the fact that students, educators, and researchers can study preserved plant specimens in our herbarium, consult our library and reference materials, and then immediately step outdoors and physically interact with and observe the same plants in our living collections. This combination of preserved, published, and planted assets increases our educational potential exponentially, making NTBG a valued resource to people from across many disciplines and professions.

NTBG continually strives to foster a greater understanding of plants whether the lesson is in the form of a 90-minute public lecture, a six-month internship, a field trip, or a weekend workshop in our nursery, education center or the in our gardens and preserves.



INSECTS FROM THE PHILIPPINE ISLANDS

STATE INSECTS OF CALIFORNIA



Small white label with illegible text.

Small white label with illegible text.

Small white label with illegible text.





# South Shore Gardens

Located in the Lawa‘i Valley below NTBG Headquarters, our flagship McBryde Garden abuts the adjacent Allerton Garden. These exceptional gardens offer varied topography, microclimates, and stunning view planes with extensive living collections of tropical exotic plants, Polynesian introduced plants, and one of the richest, most diverse assemblages of native Hawaiian plants in existence. Daily public tours access both gardens by way of a breathtaking coastal roadway into the valley from the Bill and Jean Lane South Shore Visitor Center.

Welcoming more than 57,000 people to our South Shore Visitors Center, tour arrivals reached their highest number in 2016, with a two percent growth over the previous year.



In February, the Garden welcomed Tobias Koehler as its new Director of South Shore Gardens. Under his direction, and with the hard work of staff and volunteers, 2016 was a year full of activities, achievements, and community involvement. The number of visitors arriving by cruise ship continued to grow with nearly ten different cruise brands from two major cruise lines.

The number of private events such as weddings nearly doubled last year. We also invited our local community to join us for movie nights in the garden, plant sales, and the Christmas Craft Fair.

In the Allerton Garden, horticulture interns and volunteers working with our horticulture staff on a restoration project at Lawai-kai, planted over 500 native plumbago and pandanus seeds, along with 1,000 seedlings and native sedges.

In addition to implementing a new tour interpreter training program in 2016, our South Shore gardens hosted cultural events in which several hula halau (schools) from across Hawai'i paid homage to the legacy of Queen Emma in the Lawa'i Valley. We also hosted our first traveling art exhibition, Nature Connects, which featured 14 nature-themed sculptures made from LEGO bricks. The exhibit was on display in the McBryde Garden May

through July, drawing local residents, school groups, and families between spring and summer breaks.

Physical upgrades and additions in the South Shore gardens included the completion of a new universally accessible connector trail linking our streamside Reading Palms walk with the newer Biodiversity trail, greatly improving accessibility over uneven terrain. In June, we completed a new maintenance building in the Lawa'i Valley, allowing us to relocate and improve our vehicle and equipment maintenance operations.

In September, partnering with the Kaua'i Conservation Alliance, we held the one-day Kaua'i Conservation Expo following the IUCN World Conservation Congress. The expo was offered in the McBryde Garden and featured 40 local exhibitors representing conservation and environmental groups from around the island. Educators, students, community leaders, and other partners in protecting nature — more than 400 people in all — attended the zero-waste event that included Kaua'i's mayor and keynote speaker Ulalia Woodside, executive director of The Nature Conservancy Hawai'i. With a "Conservation Marketplace of Ideas," educational demonstrations, and cultural performances, the expo proved to be a great way to advance conservation and bring the enthusiasm of the World Conservation Congress to our own community.







# Limahuli Garden and Preserve

Limahuli Garden and Preserve, on the north shore of Kaua'i, is located in one of Hawai'i's most culturally, historically, and biologically important valleys. Hemmed in by steep mountains and the sea, Limahuli is home to nearly 250 taxa of native plants and animals, many threatened with extinction. The valley, bisected by the pristine Limahuli Stream, is also a treasure-trove of archaeological and cultural assets and provides an outstanding window into Hawaiian biocultural conservation embodied by the ridge-to-reef ahupua'a land management system.

Education plays a critical role at Limahuli. In 2016, Limahuli provided a research environment

for three graduate students whose projects focus on various aspects of conservation in the ahupua'a of Hā'ena. The results of their research will inform our adaptive management of the resources of the valley and surrounding area.

In 2016, field research for a collaborative project with a multi-disciplinary group (botany, marine biology, economics, and atmospheric science) from the University of Hawai'i was completed as part of a two-year project that explores how Pacific Island communities are adapting their management of terrestrial and marine resources in response to climate change.





Limahuli's staff continues to play a leadership role in initiatives that strengthen our connection to our community. We have also been involved in the master planning process for Hā'ena State Park and have led the rule-making process for a new Community-based Subsistence Fishing Area, the first such designation granted by the State of Hawai'i.

Within Limahuli Garden, we completed a new 'Dream Trail' as the first part of our ongoing efforts to improve safety, aesthetics, and the overall visitor

experience. This new trail leads visitors under a beautiful 'Ōhi'a lehua (*Metrosideros polymorpha*) tree with rare orange blossoms, opening to spectacular views of the Limahuli Stream and surrounding peaks.

In August 2016, Limahuli partnered with the Hawai'i Conservation Alliance to produce a poster depicting a holistic view of ridge-to-reef health in our community. The poster is a powerful communication tool that embodies a system-based



understanding of the challenges our community faces and the strategies needed to overcome them.

In the effort to conserve plants and birds, 2016 was a year of great success in the Upper Limahuli Preserve. One of our next-generation initiatives uses drone technology and 3-D image digital mapping to more safely and efficiently find individual rare plants in the Upper Limahuli Preserve's steep, rugged terrain. As new discoveries are made, the conservation value of the Limahuli Preserve increases.

As a way to bring our conservation operations into alignment with the Hawai'i Strategy for Plant Conservation, we have brought all of Limahuli's living collections into a single collectively managed group. Doing so will allow us to more efficiently conserve the genetic diversity of our rarest plants, making them more likely to survive the conditions of a changing planet.





# Kahanu Garden and Preserve

Kahanu Garden, on Maui’s windward coast, is home to the National Historic Landmark Pi‘ilanihale heiau, the largest archaeological site in Hawai‘i. The garden is also home to the NTBG Breadfruit Institute’s collection of trees — the most comprehensive living collection of breadfruit trees in existence.

Additional important features of Kahanu Garden include the native Hawaiian *Pritchardia* palms and the Mary Wishard Coconut Grove with 21 distinct varieties of *Cocos nucifera* — coconut palms. In 2016, inventories of both the *Pritchardia* and coconut palms were updated with the addition of new ID tags. There are subtle taxonomic differences between specimens and species that require periodic updates to ensure records remain current and accurate.



Efforts within living collections also included the expansion of rare and endangered species native to Maui. Kahanu Garden is positioned to greatly represent many of the species on the island. New species being protected include Maui Halapepe (*Chrysodracon auwahiensis*) and Kā'e'e (*Mucuna sloanei persericea*).

Our 2016 efforts at Kahanu Garden also included a complete overhaul and upgrade of the solar infrastructure in the maintenance/work area, ensuring our staff has a stable power supply and reliable internet connection even in the Garden's remote location on East Maui.

On the education front, Kahanu Garden hosted over 110 students from across Hawai'i and the continental U.S. The students participated in the 8th annual Kūlia I Ka Pono summer program that builds on cultural foundations of Kamehameha School programs over a five-week period. Taking advantage of Kahanu Garden's rich historical, natural, and biocultural assets, the program's curriculum focused on the concept of aloha 'āina (love of the land). The program was based on

systems-approach thinking, integrating values of the ahupua'a, a land management system that stretches from the mountain tops to nearshore fisheries.

Kahanu Garden welcomed a group of horticulture interns who spent two weeks contributing to the restoration of garden features as well as learning horticulture landscape strategy and effective techniques for agroforestry, tree maintenance, and creating and caring for public garden features. The interns also had lessons in coastal restoration within the Kahanu Preserve.

With the approval of special-use and special-management permits, Kahanu Garden's planned Visitor and Education Center made important advances with plans to break ground in 2017. When completed in 2018, the new Visitor and Education Center will be located near the entrance of the garden. The 1600-square foot center will combine indoor and outdoor space in a style consistent with the rural nature of its surroundings. The center will be used for garden visitors, school groups, workshops, and presentations.





# The Kampong





The Kampong marked its centennial in 2016, recalling famed plant explorer Dr. David Fairchild's purchase of the Coconut Grove, Florida, property in 1916. From its origins as the tropical home of the legendary plant explorer, The Kampong has long been recognized as an iconic pillar of the history, culture, and landscape of Miami and south Florida. In its centennial year, The Kampong saw a 35 percent increase in visitors compared with the year prior.

The Kampong's living collections are flourishing. More than 170 newly accessioned plants were brought into the collections in 2016. Additionally, the Fellows Restoration Project contributed significantly to the renovation and improvement of The Kampong nurseries, boosting our capacity to renovate and propagate plants for the future.



## Culture lives at The Kampong and in 2016 we celebrated indigenous culture with members of the Yawanawá tribe of the Brazilian rainforest...

There is a long history of education at The Kampong, which provides an outstanding setting for education programs serving learners from school children all the way through post-graduate, as well as scientists, medical doctors, and science educators. Our programs include: Tropical Botany for upper level students and professionals; a Botanical Illustration Workshop; the Barnyard afterschool program for underserved children; a Science Teachers Enrichment Program; and (added in 2016) a new program for middle- and high-school students. Culture lives at The Kampong and in 2016 we celebrated indigenous culture with members of the Yawanawá tribe of the Brazilian rainforest when they performed at The Kampong. We also presented a film festival in partnership with Mountainfilm Miami featuring environmental films dedicated to educating, inspiring, and motivating audiences about issues that matter.

Another exciting development includes: the revitalization of David Fairchild's original office and laboratory by conceptual artist Mark Dion. The exhibit tells the story of Fairchild's life and work through personal objects collected by Dion over a two-year period. The permanent exhibit opened as part of Art Basel Miami.

In 2016 The Kampong welcomed the restoration of the Fairchild-Sweeney House and surrounding cottages and grounds. The preservation of this important piece of South Florida history is ongoing with support from the State of Florida Department of Historic Preservation. Furthermore, the Junior League of Miami held a Designer Showhouse at The Kampong in which the Fairchild-Sweeney House and surrounding cottages were transformed by designers participating in the Showhouse.

In June, The Kampong was honored to host the American Public Gardens Association's Director's Dinner during the APGA's conference in Miami. Thanks to the generous support of donors, approximately one dozen Garden staff from Hawai'i participated in the conference and visited The Kampong.

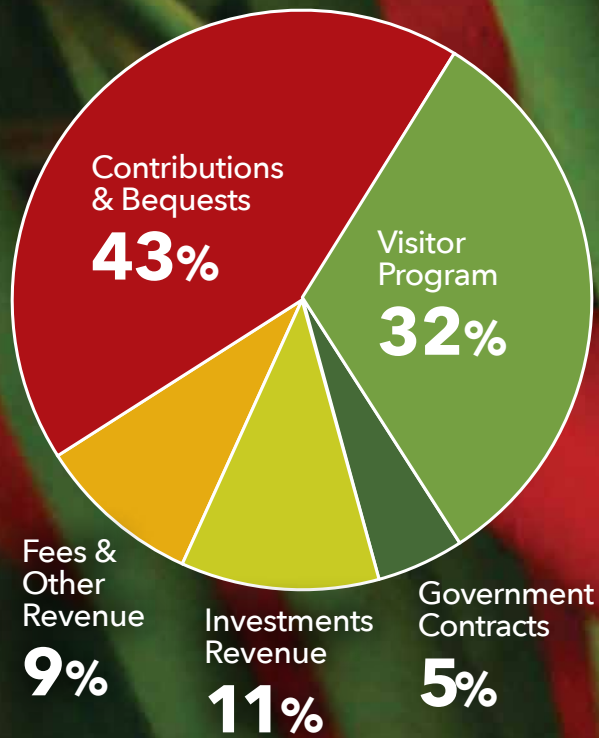
Finally, our annual fundraiser, Bali Ha'i, was managed entirely by Kampong staff for the first time and proved to be a success, based on funds raised and feedback from those who attended and told us they thought it was the best Bali Ha'i they had ever attended.



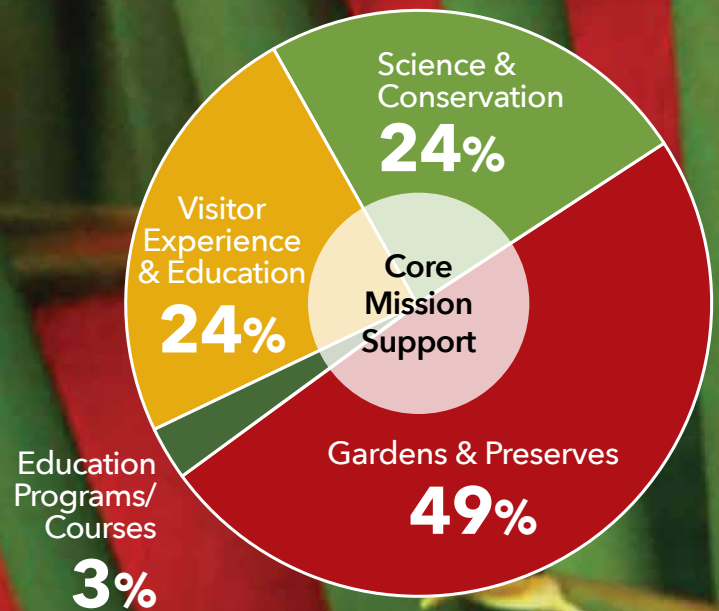
# Financials

Balance Sheets - Audited December 31, 2016

## Revenues and Support



## Expenses



Core Mission Support represents the investment in key functions that are necessary, vital, and integral to delivering our programs. Each of our programs is built around, is supported by, and shares responsibility for Core Mission Support.



**2016**

---

**ASSETS**

\$ in 1,000s

Cash and cash equivalents	\$ 3,050
Other current Assets	1,797
Fixed Assets	35,038
Assets held for preservation	9,445
Assets held for investment	20,231

---

**TOTAL ASSETS**

**\$ 69,561**

**LIABILITIES AND NET ASSETS**

LIABILITIES:

Current Liabilities	\$ 995
Long-term liabilities	954

NET ASSETS:

Unrestricted	25,588
Board Designated	991
Temporarily restricted	12,514
Permanently restricted	28,519

---

**TOTAL LIABILITIES & NET ASSETS**

**\$ 69,561**

To review the National Tropical Botanical Garden's 2016 Audited Financial Statement, please visit our website at <https://ntbg.org/about/financial-information>



# Board of Trustees

as of December 31, 2016

## CHAIRMAN

Mr. Thomas D. Hewitt  
*Calgary, Alberta, Canada*

## SENIOR VICE CHAIRMAN

Mr. Hugh W. Foster  
*San Francisco, California*

## VICE CHAIRMAN

Mr. Merrill L. Magowan  
*Hillsborough, California*

Harlan C. Amstutz, MD  
*Los Angeles, California*

Mrs. Leslie M. Clarke  
*Amagansett, New York*

Mrs. Mary M. Cudahy  
*Kula, Hawai'i*

Mr. Gordon L. Deane  
*Cohasset, Massachusetts*

Mrs. Martin Dickinson  
*Rancho Santa Fe, California*

Ms. Anne G. Earhart  
*Corona Del Mar, California*

Ms. Jan D. Elliott  
*Hāna, Hawai'i*

Mrs. Eric P. Fraunfelder  
*Castillon Du Gard, France*

Ms. Adaline H. Frelinghuysen  
*New York, New York*

Mr. Peter C. Gardner  
*Miami, Florida*

Mr. Donald W.Y. Goo, Faia  
*Honolulu, Hawai'i*

Mrs. Roger P. Hanahan  
*Charleston, South Carolina*

Mrs. Oliver Holmes  
*San Francisco, California*

Mr. John C. Hooper  
*San Francisco, California*

Mr. Douglas McBryde Kinney  
*Lake Forest, Illinois*

Ms. Elizabeth E. Matthews  
*West Palm Beach, Florida*

Mr. Mike Maunder, PhD  
*St. Austell, Cornwall, United Kingdom*

Mr. David G. Meissner  
*Mequon, Wisconsin*

Prof. Sir Ghillelan Prance, FRS  
*Lyme Regis, Dorset, United Kingdom*

Mr. David W. Pratt  
*Līhu'e, Hawai'i*

David Rae, PhD, OBE  
*Edinburgh, United Kingdom*

Prof. John H. Rashford, PhD  
*Charleston, South Carolina*

Mrs. Wayne Richardson, III  
*Līhu'e, Hawai'i*

Mrs. Catherine S. Rodriguez  
*Venice, Florida*

Michael N. Rosenberg, DDS  
*Miami, Florida*

Mrs. Raymond L. Salley  
*Hōnaunau, Hawai'i*

Ms. Patricia W. Sheehan  
*Hanalei, Hawai'i*

Mrs. Judy C. Webb  
*Greenbrae, California*

Mr. John D. Weeden  
*San Francisco, California*

Ms. Nicole S. Williams  
*Glencoe, Illinois*

Mrs. Reed C. Wilson  
*Portland, Oregon*

## TRUSTEES EMERITUS

Mrs. Leburta G. Atherton  
*Honolulu, Hawai'i*

Mrs. Eleanor Bleakie  
*Cohasset, Massachusetts*

Mrs. Martha W. Cox  
*Hobe Sound, Florida*

Mr. Glenn A. Goldsmith  
*Lāwa'i, Hawai'i*

Mr. Patrick Henry  
*Palm Beach, Florida*

Mrs. Sarah O. Hewitt  
*Calgary, Alberta, Canada*

Mr. Thomas S. Kenan, III  
*Chapel Hill, North Carolina*

Mrs. L.W. Lane, Jr.  
*Menlo Park, California*

Mrs. Betsy K. Matthews  
*Palm Beach, Florida*

Mr. Jim Nabors  
*Honolulu, Hawai'i*

Mr. Charles R. Wichman  
*Honolulu, Hawai'i*



# Council of Fellows

The National Tropical Botanical Garden Council of Fellows was established in 1985 as the preeminent membership group at the National Tropical Botanical Garden and has been instrumental in its development as a national resource. Fellows are given the opportunity to connect with the National Tropical Botanical Garden in a deeper way and have access to exclusive events and experiences. Fellows are invited to participate in the bi-annual Board of Trustees meetings, one held in Hawai'i in the spring and the other in the fall on the U.S. mainland. Fellows also have the opportunity to participate in specially arranged international and domestic travel programs that include visits to private and public gardens. Many Fellows become involved with the Garden's special programs and projects.

Annual Fellows dues begin at the \$1,500 level and continue up to the Chairman's Circle level with all revenue dedicated to the Tropical Garden Fund. The Council of Fellows has been instrumental in helping NTBG become one of the most important tropical botanical gardens in the world and is the most important source of funding for garden operations.

The following list reflects all those who were active members of the Council of Fellows as of December 31, 2016. While every effort has been made to ensure the accuracy of information and spelling, please notify our Development Office at 808-332-7324 of any errors.

# Council of Fellows

## CHAIRMAN'S CIRCLE

Mary and James W. Griffith, Jr.  
*Carbondale, Colorado*

Heather and Patrick Henry  
*Palm Beach, Florida*

Lin Lougheed  
*Miami Beach, Florida*

Carey and Anthony Sutton  
*Gainesville, Florida*

Nicole S. Williams and  
Lawrence L. Becker  
*Glencoe, Illinois*

## BENEFACTOR FELLOW

Laura Ray and Donald W. Y. Goo  
*Honolulu, Hawai'i*

Katherine and Scott Grainger  
*Kamuela, Hawai'i*

Diane B. Heller  
*Chicago, Illinois*

Mary Hultar  
*Palm Beach, Florida*

Betsy K. Matthews  
*Palm Beach, Florida*

Marion S. and David G. Meissner  
*Mequon, Wisconsin*

Teita and Thomas L. Reveley  
*Bainbridge Island, Washington*

Diane and Michael Rosenberg  
*Miami, Florida*

Barbara K. Sweet  
*New Castle, New Hampshire*

## PATRON FELLOW

Patricia P. and Harlan C. Amstutz  
*Los Angeles, California*

Stephanie Lerner Ansin and  
Spencer Stewart  
*Coral Gables, Florida*

Lauran Bromley  
*Northbrook, Illinois*

Constance L. and Thomas Broz  
*Freedom, California*

Motoko T. and Gordon L. Deane  
*Cohasset, Massachusetts*

Carol D. and Martin Dickinson  
*Rancho Santa Fe, California*

Joan G. Evans  
*Santa Barbara, California*

Adaline H. Frelinghuysen  
*New York, New York*

Glenn and Jane Goldsmith  
*Lāwā'i, Hawai'i*

Priscilla and James Growney  
*Honolulu, Hawai'i*

Thomas S. Kenan, III  
*Chapel Hill, North Carolina*

Elizabeth H. and Douglas  
Mcbryde Kinney  
*Lake Forest, Illinois*

Susan E. Lynch  
*Greenwich, Connecticut*

Robert Malott  
*Chicago, Illinois*

Susan and Roy O'Connor  
*Missoula, Montana*

Catherine S. Rodriguez  
*Venice, Florida*

Annie Seipp  
*Portola Valley, California*

Christopher A. Shuping  
*Chapel Hill, North Carolina*

Louise M. and Richard A. Steenblik  
*Kīlauea, Hawai'i*

Elizabeth and John Von Krusenstiern  
*Kalāheo, Hawai'i*

## SPONSORING FELLOW

Georgette F. Ballance  
*Miami, Florida*

Sam\* and Mary Cooke  
*Honolulu, Hawai'i*

Mary M. Cudahy  
*Kula, Hawai'i*

Martha R. Davis and Alix Ritchie  
*Fort Lauderdale, Florida*

Louisa C. Duemling  
*Worton, Maryland*

Jan D. Elliott  
*Hāna, Hawai'i*

Ceseli and Hugh Foster  
*San Francisco, California*

Gina and Peter Gardner  
*Plantation, Florida*

Sarah and David Goodale  
*Hanalei, Hawai'i*

Amy Dana Hewitt  
*Calgary, Alberta Canada*

Gina and Raymond Jungles  
*Miami, Florida*

Donald R. Logan  
*Santa Barbara, California*

Helen Norton  
*Harpwell, Maine*

Mr. Jaime Odabachian and  
Ms. Johanna Boccardo  
*Miami, Florida*

Katherine G. and Wayne Richardson  
*Līhu'e, Hawai'i*

Katherine and Laurence Ronan  
*Miami, Florida*

Margot and George Thompson  
*Portland, Oregon*

Catherine and Michael Topham  
*Kalāheo, Hawai'i*



Hau'oli and Chipper Wichman  
*Kalāheo, Hawai'i*

Jeanne R. and Charles R. Wichman  
*Honolulu, Hawai'i*

Michele and Malcolm Wiseheart, Jr.  
*Coral Gables, Florida*

Jane Woodward  
*Palo Alto, California*

## FELLOWS

Anonymous (2)

Peter and Anne Anderson  
*Palo Alto, California*

Linda Bacon  
*San Francisco, California*

Wendy and Marc Badia  
*Easton, Massachusetts*

Julia and William Beckham  
*Coral Gables, Florida*

Monika Betts  
*Chicago, Illinois*

Claudia and Alex Binelo  
*Key Biscayne, Florida*

Terry Blechman  
*Miami Beach, Florida*

Patricia and Richard Bohn  
*Miami, Florida*

Beatrice Bowles  
*San Francisco, California*

Diane M. and David Buck  
*Milwaukee, Wisconsin*

Cristina Calzadilla and Tony Gonzalez  
*Miami, Florida*

Kristen Deane and Douglas Campbell  
*Cohasset, Massachusetts*

Jill and Donald Canaparo  
*Hanalei, Hawai'i*

Andre Carothers  
*Berkeley, California*

Wendy W. Chase  
*Bellevue, Idaho*

Mary Mackiernan and Robin D. Clark  
*Kalāheo, Hawai'i*

Hazel and Gordon Coates  
*Calgary, Alberta Canada*

Pamela W. Cole  
*Coral Gables, Florida*

Nancy and Edward Conner  
*San Francisco, California*

Lucy B. and Steve Cookson  
*Denver, Colorado*

Mary and Michael Copriviza  
*Cupertino, California*

Michael Costello  
*Miami, Florida*

Camila Cote  
*Miami, Florida*

Margit and Lloyd E.\* Cotsen  
*Beverly Hills, California*

Melissa Croatti and Michael O'rourke  
*Hudson, New Hampshire*

Lindsay and Zach Deane-Mayer  
*Boston, Massachusetts*

Debra Demarco  
*South Miami, Florida*

Frances Dillingham  
*San Francisco, California*

Dianne and David Drought  
*Kalāheo, Hawai'i*

Claire Efird  
*Wilmington, North Carolina*

Valerie and Robert English  
*Coral Gables, Florida*

Lisa and Timothy M. Fitzgibbon  
*Park Ridge, Illinois*

Jane and George Fogg, III  
*Chestnut Hill, Massachusetts*

Marisa Fort  
*Miami, Florida*

Elizabeth H. Foster  
*Orinda, California*

T. Jack Foster, Jr.  
*San Mateo, California*

Hedda and Lutz Franz  
*Sai Kung N.t., Hong Kong*

Harriet S. and Eric P. Fraunfelter  
*Bethesda, Maryland*

Tina Freeman and Philip Woollam  
*New Orleans, Louisiana*

James Guerber  
*Kōloa, Hawai'i*

Roberta Haas  
*Hanalei, Hawai'i*

Patricia S. and William J. Hagenah  
*Kenilworth, Illinois*

Clifford Hague  
*Avalon, California*

Beryl and Rex Hamilton  
*Coral Gables, Florida*

Elizabeth and Scott M. Haskins  
*San Francisco, California*

Kathleen and Herbert Hong, Jr.  
*Honolulu, Hawai'i*

Molly and Jock Hooper  
*San Francisco, California*

Kelly and Frederick Hopkins  
*Charlotte, North Carolina*

Donna M. Howard  
*Kihei, Hawai'i*

Kristin K. and Thomas J. Hughes  
*Boston, Massachusetts*

Pamela K. and Roger Hull  
*Lake Forest, Illinois*

Anna Karen Johnson  
*Kōloa, Hawai'i*

# Council of Fellows

Sallye and James Jude  
*Coral Gables, Florida*

Marisa and Scott Kagan  
*Kīlauea, Hawai'i*

Mrs. William A. Kaynor  
*Key Biscayne, Florida*

Frank H. Kenan, II  
*Charleston, South Carolina*

Thomas D. King, Jr.  
*Kīlauea, Hawai'i*

Kimberley and Douglas  
Mcbryde Kinney, Jr.  
*Lake Forest, Illinois*

Brigitte and James Kishlar  
*Miami, Florida*

Eliza and Michael Koepfel  
*Larkspur, California*

Cheryl and Charles Kozloff  
*Hobe Sound, Florida*

Karolyn J Kramer and Frank Cohen  
*Atlanta, Georgia*

Suzanne D. Kuser  
*Washington, District Of Columbia*

Lynda L. Larocca  
*Coral Gables, Florida*

Janet and David Leopold  
*Waimea, Hawai'i*

Yonna and Fredrick Levine  
*Miami, Florida*

Wendy A. Levitz and Sanjiv S. Desai  
*Coconut Grove, Florida*

Shiham Colegial and  
Lorenzo Lorenzo, Jr.  
*Miami, Florida*

Sally and Donald Lucas  
*Pebble Beach, California*

Anne Macdonald-Korth and  
James Korth  
*Coconut Grove, Florida*

Cynthia and Merrill L. Magowan  
*Hillsborough, California*

Elizabeth and Bruce Mahaffey  
*Coral Gables, Florida*

Elizabeth E. Matthews and  
Charles James  
*West Palm Beach, Florida*

George G. Matthews  
*West Palm Beach, Florida*

Joyce and Edward R. Mcdowell  
*Kīlauea, Hawai'i*

Clay and Don Mcguire  
*Pebble Beach, California*

Pamela and Edmund Mcilhenny  
*Avery Island, Louisiana*

Cynthia and Terrance P. McMahon  
*Monte Sereno, California*

Margaret and Paul J. McMahon  
*Coral Gables, Florida*

Ruth C. Mead  
*Hobe Sound, Florida*

Amy and Jack Meyers  
*North Haven, Connecticut*

Ivonne and John Miller  
*Atlanta, Georgia*

Ruth H. Mitchell  
*Key Biscayne, Florida*

Juliet Moncrief  
*Durango, Colorado*

Marianne C. Montoro  
*Coral Gables, Florida*

Lynne Johnson and Randolph Moore  
*Honolulu, Hawai'i*

Mary Macmillan Morse  
*West Palm Beach, Florida*

Celeste and William T. Muir  
*Coconut Grove, Florida*

Caroline H. and Charles Neal  
*Wilmington, North Carolina*

Marie and Steve Nock  
*Pinecrest, Florida*

Pauline and William Nutting  
*Hobe Sound, Florida*

Suzy C. Orb  
*Mill Valley, California*

Hélène M.m. Pancoast  
*Miami, Florida*

Judith E. Parker  
*Cambridge, Massachusetts*

Gail Paster  
*Chevy Chase, Maryland*

Jill Penman and Matthew Kujawa  
*Miami, Florida*

Thomas E. Powell, III  
*Burlington, North Carolina*

Carol J. Pratt  
*Līhu'e, Hawai'i*

Lazaro Priegues and Mike Hernandez  
*Miami, Florida*

Ilona and James Priest  
*Kōloa, Hawai'i*

Diana and Frederick H. Prince  
*Washington, District Of Columbia*

Mrs. Janice C. Pryor  
*Coral Gables, Florida*

Andrea L. Rice  
*Coral Gables, Florida*

Ken Ringle  
*Washington, District Of Columbia*

Roberta and Roger Rosenberger  
*Miami, Florida*

Susan and John Rothchild  
*Miami Beach, Florida*

Camila Salvisberg and  
Solomon Barnett  
*Chicago, Illinois*

Mary and Federico J. Sánchez  
*Miami, Florida*

Katherine and John Scarborough  
*Titusville, Florida*

Karen and Paul Schlather  
*Medina, Ohio*

Patricia O. Schleuning  
*Portland, Oregon*

Stephanie and Ken Schwartz  
*Manhattan Beach, California*

Hillary and Constantine Scurtis  
*Coral Gables, Florida*

Joan and Lynn Seppala  
*Livermore, California*

Susannah M. and John K. Shubin  
*Coral Gables, Florida*

Penelope and E. Roe Stamps  
*Coconut Grove, Florida*

Sara and Dan Sullins  
*North Vancouver, British Columbia  
Canada*

Katharine Sullivan  
*Wilmington, North Carolina*

Edward Sweeney, Jr.  
*Parker, Colorado*

Phyllis E. Swindells  
*Bend, Oregon*

Linda and Leighton Taylor  
*Honolulu, Hawai'i*

Jocelyn D. Tennille  
*Miami, Florida*

Cathy and Herndon Thomason  
*Avery Island, Louisiana*

Vann and Parker Thomson  
*Coral Gables, Florida*

Michaline and Matthew Todd  
*San Jose, California*

Mary and Michael Trueblood  
*Cape Girardeau, Missouri*

Christen and Christopher D. Turner  
*Walpole, Massachusetts*

Mish Tworkowski and Joseph Singer  
*New York, New York*

Christiane and Christopher Tyson  
*Coral Gables, Florida*

Mr. and Mrs. Thomas N. Urban, Jr.  
*Des Moines, Iowa*

Lenita C. and Henk Van Der Werff  
*Taos, New Mexico*

Chrystal Vang  
*Anahola, Hawai'i*

Virginia and Sander Vanocur  
*Santa Barbara, California*

Susie and Walid Wahab  
*Miami, Florida*

Heather and Richard Waters  
*Charlottesville, Virginia*

Indru and Gulab Watumull  
*Honolulu, Hawai'i*

Paul Weaver  
*San Francisco, California*

Sharron Weber  
*Līhu'e, Hawai'i*

Mary E. Weinmann  
*Washington, District Of Columbia*

Heidi and Andrew Whitman  
*Ojai, California*

Bernadette and Jonathan Wichman  
*Hanalei, Hawai'i*

Wendy J. Wichman  
*Honolulu, Hawai'i*

Christina B. and Reed C. Wilson  
*Portland, Oregon*

Georgene E. and Edwin Y. Yamada  
*Lāwa'i, Hawai'i*

## LIFETIME

Mrs. Eugene Mcdermott  
*Dallas, Texas*

## HONORARY

Mrs. Alison Andrews  
*Seattle, Washington*

Ms. Elizabeth C. Baker  
*New York, New York*

Mr. Nicholas B. Bragg  
*Winston Salem, North Carolina*

Hon. Anne Cox Chambers  
*Atlanta, Georgia*

Count and Countess  
Bernard De La Rochefoucauld  
*Fay Aux Loges, France*

Mrs. Jeff Holcombe  
*Rancho Santa Fe, California*

Madame Andre Madre  
*Paris, France*

Mrs. Peter Mccoy  
*Beverly Hills, California*

Mrs. John W. Pyne  
*Far Hills, New Jersey*

Larry and Colleen Schokman  
*Coconut Grove, Florida*

Mrs. Bagley Wright  
*Seattle, Washington*

## CORPORATE LEADER (\$10,000+)

Kōloa Rum Company  
*Kalāheo, Hawai'i*

## CORPORATE MEMBERS (\$2,000 - \$4,999)

East West Partners  
*Avon, Colorado*

Kawailoa Development, Llc  
*Kōloa, Hawai'i*

\* Deceased

The background of the entire page is a photograph of three white flowers with bright yellow centers, likely poppies, in a garden. One flower is in the foreground, slightly to the right, and is in sharp focus. Two other flowers are in the background, one to the left and one to the right, both slightly out of focus. The ground is dark brown mulch, and there are green leaves and stems visible.

# 2016 Donors

*Thank you!* The National Tropical Botanical Garden is grateful to all who generously support our programs. The following list reflects the 2016 cumulative giving by donors and includes all gifts received between January 1, 2016, and December 31, 2016, including memberships, annual fund gifts, campaign gifts, pledge payments, grant awards, gifts for special projects, and tribute and memorial gifts. While every effort has been made to ensure the accuracy of information and spelling, please notify our Development Office at 808-332-7324 of any errors.

## \$50-\$149

Anonymous (7)  
1st Community Insurance Services  
William Abercrombie  
Susan Adams  
Antonio Aguirre  
Christine & Michael Aguirre  
Lori & Michael Ah Tou  
Stuart Albright  
Barbara & David Alexander  
Anthony Alfred  
Lindsay M. & David Allison  
Ibbie W. Al-Shamma  
John Ambler  
Anne Anderson  
Margaret L. Andrews  
Angela Headley Island Art  
Grace Anurak  
Louise Arakaki  
Judy Leigh Arnobit  
Bonnie Ashleman  
Linda & Bill Atwater  
Brigitte Auinger  
Lynn M. Aylward  
Esther Back  
Dr. Jim Back  
Annie Baik  
Sarah Bakewell  
Jamie & Mark Baldwin  
Lori & Glen Balisacan  
Bamboo Inn on Hana Bay  
Gloria & Mark Baum  
Nancy & Timothy Beach  
Debra Beeler  
Debbie Behrens  
Ann Hallisey & Barry Beisner  
Susan & Bernard Bell  
Patricia G. Benca  
Vera Benedek  
Brian Berg  
Daniel N. Bernstein  
Elizabeth & Luther A. Bertrando  
Carolyn Bertussi  
Joe Biaglow  
Patricia & Thomas Biehn  
Catherine L. & Daniel R. Bird  
Ann Bjork  
Genevive Bjorn  
Barbara Black  
John S. Blackman  
Michelle M. & Randall C. Blake  
Pamela & Thomas Blake  
Jana Rothenberg Blay  
Ellen & Nicholas Blonder  
Roberta Bloom & Michael Iven  
William Bloomquist  
Maile & Alastair Blossom

Janet Blumberg  
Gerre L. & Lyle C. Boardman  
Carol Bockman  
Jolly Bodine  
Christine Bogard  
Jonathan Bond  
Barbara Bonds  
David V. Boucher  
Bovair Real Estate  
Renee Koslak & Ben Bowen  
Brenda R. & Robert E. Bowers  
Fern Bowman  
Madeleine D. Brandli  
Susan & Paul Brandon  
Donita Brannon  
Barbara Braunstein  
Monica E. Breedlove  
Kristi Brenden  
Edna Bronzino  
Isabel & Barth Brooker  
Balbi Brooks  
Patricia Brooks-Servito  
& Philip Servito  
Jane & Marty Brown  
Virginia Lowrey Brown  
Kathleen & Jason Bryant  
Kari Bryski & Tim Rooney  
Nancy Budd & Roy Yamakawa  
Nancy Ann & Terry Budden  
Carole & Craig Buhlman  
Liedeke Bulder & Dick Wright  
Nancy Bull  
Roddey Burdine  
Robert Burgess  
Susan & Coleman Burke  
Diane & David Burnley  
Sharron Lux & Bruce Burr  
Cecilia & William Caldwell  
California El Camino CPCU  
Society Chapter  
Sean Callahan  
Colin & Sara Camacho  
Alice Campbell  
Antonia Canero  
Carlsmith Ball LLP  
Laurie Carlson  
Carol Carpenter  
Esther Carpi  
Kathryn Carroll  
Sharon L. Carroll & H. R. Downs  
G. Nadine Carswell  
Mary Anne & Ronald J. Casella  
Marcia & Maurice Casey  
Ric Catron  
Suzanne & Nicholas A. Charles  
Sylvia Chinn-Levy  
Jessica Clabo  
Robert Clabo

Carol & Dennis Claussen  
Byron Cleeland  
Marilyn J. Cleghorn  
Sally Clifford  
Peter Coates  
Britt & JonAllen Cocumelli  
Rennie Coit  
Wendy Colello  
Kay & Jon Collins  
Michele & Edgar Compton  
Stephanie & Paul K. Comstock  
Ileen & Alex Conn  
Laurie & Thomas Connolly  
Dave Cook  
Ursula Maul & John Cooke  
Margarete & John Cooke  
Sheila Cooper  
Diana & Steven Coram  
Barbara Corcoran  
Susan Ford & Ivan Cordrey  
Robert Coronado  
Lynnette Coster & Paul Scolari  
Margaret & Robin Cottle  
Carol Hanson & Barry Cowan  
Steve Coy  
Laurie Craise  
Barbara & John Crawford  
DeeDee & Chris Cross  
Margaret & Stephen Cull  
Susan Cumins  
Janine Cuthbertson  
Sheri Hamersley & Frank Czerwiec  
Barbara & Carlo Daquanni  
Sarah I. Date  
Shirley A. Dauterman  
Leon Davenport & Kaiulani Kauahi  
Diane & Doug Dawson  
Nancy Day  
Deep Harbor, Inc.  
Dianne A. Delorenzo  
Andrew Denny  
Mary & David Dietrich  
Stephen L. Dilts  
Pamela Dixon & Nicholas Seagraves  
Dian Althea Dooley, Ph.D.  
Raquel & David Dow  
William Dowdney  
Lois Drake  
Michele Drake  
Sheila Drews  
Suzanne Dudziak  
Carmen & Burnie Dunlap  
Beverly & Walter Durham  
Patricia Burger & Derek Dykman  
Lynne S. & Glenn N. Ebisui  
William A. Eddy, Jr.  
Patricia & Larry Egger  
Mike Ehlebracht

Robin & Ernest Ehnisz  
Carl Einberger  
Martha & David J. Elpern  
Gloria Erickson  
Rebecca Erickson  
Jean Estes  
Don Evans  
Patricia J. Evans  
Dorothy & James Fadiman  
Lisa Falvy  
Carleah Fayen & Timothy Meenagh  
Anita & Anthony T. Febbo  
Sara Feinstein & Craig Willett  
Robin Fellers  
Melissa & Tim Fender  
Eleanor L. Ferril  
Arlene Ferris  
Gregory A. Ferris  
Glenn Finch  
Jennifer & Matt Firmin  
Marilyn Fisher  
Shirley & Stephen Fiske  
David Flowers  
Jo B. & Emil D. Flynn  
Foggs Automotive  
Annette V. & Bennett E. Fong  
Pearl Fong  
Margaret Foster  
Meg Fox  
Gisela Franceschi  
Judy Whitney & Edward Franzen  
Stephanie Frazier  
Debra Petersen & Tracy Fredin  
Isaac Alvarado & Ulla Freeman  
Eleanor & William H. Freudenstein  
Marlene Jordan & Samuel Friend  
Beverly Frost  
Melissa & Benjamin Fugitt  
Gladys Fujiuchi  
Millie Hughes Fulford &  
George Fulford  
Timothy Fullam  
Mark A. Fulmer  
Margaret Funk  
Glenn L. Gabanski  
William Garnett  
Jill L. Gaspar & J. Ann Carr  
GE Foundation  
Heather George & Scott Valor  
Joan George-Herzberg &  
Robert Herzberg  
Kurt Gerhold  
Danielle Gianola  
Jann & Lock Gibbs  
Lisa Gill  
Laura & Jim Gilpin  
Dena Gitterman  
Bill Glancy

David Goldhaber  
Leonard Goldstein  
Jenna & Jake Gonsalves  
Dania Sanchez & Antonio  
Gonzalez-Sanchez  
Meghan & Matthew Goodale  
Ryan Gordines  
Pamela Gordon  
Stanley A. Gorgol  
Sharon Gottfried  
Toby D. & William G. Gottfried  
Amy & Derek Green  
Mary & Ken Greenbaum  
Giselle & David Gregorius  
Marylou & Gregor Greig  
Matthew Grohne  
Thomas B. Grollman  
Kristin Grosenbach  
Phyllis M. Guard  
Paula Gudaitis  
Stephanie Guest & Richard Ellis  
Amitaba Gupta  
Francis S. Haines  
Sandee & Kenneth Haines  
Lisa & Larry Hale  
Donna Hammar  
Hana Kai Maui Resort  
Raven Hanna  
Mary Beth & Richard Hansen  
Mark G. Hanson  
Rheanne & Steven Hanson  
Catherine & William Hare  
Mike Harismendy  
Mary Kay Harkins  
Wendy Harman & Win Baker  
Ann Harris  
Jane & Gregory Harris  
Delyse Hart  
Kelly Hartshorn  
Jenny Den-Hartigh & Ted Hartshorn  
Marilyn Hashisaka  
Cathy Hassine  
Stephen C. Haus  
Mary & Robert Hawkins  
Sheryl & Eldon Hawks  
Margaret Janne Hayward  
Marianne P. Howard & Rufus K. Hedrick  
David Heffner  
Anandi Heinrich & Scott Clements  
Peter Hemstad  
Janet Henderson  
Kathleen A. Henney  
J. Steven Henry  
Kristen Henry  
Lauralee A. Hershey  
Robert Heyn  
Steve Hickman  
Guin Hillman

Bradford Hise & John Downey  
Stephanie Sunn & John Hodges  
Lynn M. Hodgson  
Jacquie D. Hoffman  
Susan & Tom Holling  
Terri & Timothy Honeycutt  
Jan & George Hooper  
Gary Hopkins  
Mari & Dudley Houghton  
Jan Hovey  
Linda V. & David P. Howell  
Linda Hudson & Thomas Pruett  
Hui o Laka  
Linda Humphrey  
Karen Huntsberger  
Stephen Hurtz  
Tamra Lea Ihara  
Carl Jacobs  
Maddy Jacobs  
Ellen Jacobsen  
Eric Jacobshagen  
Naugwattee & Dean Jamieson  
Lucretia N. & Michael Jaye  
Steven Jennings  
Lisa Johnshoy & Bill Prinzing  
Cherie & Larry Johnson  
Loren Johnson  
Renee Johnson  
Roberta & Eric Johnson  
Margaret M. & William R. Johnston  
Claiborne S. Jones  
Anil & Bharathi Joshi  
Melissa & Bill Joyce  
Lynette & Timothy Kaber  
Nani Kaluna  
Stella & Toshio Kaneko  
Spencer L. Karpf  
Kauai Historical Society  
Delano & Dawn Kawahara  
Linda & Galen Kawakami  
Kimo M. Keawe  
Susan & Thomas Kempe  
Elizabeth Ivon Kendrick  
Gloria Kennedy  
John & Linda Kennedy  
Beverly & Randolph Kentfield  
Alan Kesner  
Lisa King  
Linda Dean & John L. Kitzmiller  
Anne Marie & Eric Kleisler  
Patricia & Thomas Knapp, Jr.  
Moira & Stephen W. Knox  
Jamie Koerte & Curt Pantohan  
Cynthia Koja  
Susan Koning  
Galen & Jared Kramer  
JoAnne & Todd Kroesen  
Marty Kuala

Karen Kuhlmann & Peggy Carney  
 Maryanne W. & Charles Kusaka  
 Julie Hayward & Daniel Kushner  
 Angela & Bruce Kuyper  
 Robert J. Kvidt & Jeffrey P. Tucker  
 Kay T. & Vernon J. LaBau  
 Ileana & Louis LaFontisee  
 Barbara LaHaie  
 Ms. Mimi Lam  
 Susan Lander  
 Lynne Landrigan  
 Sherry Lang  
 Joan Langan  
 Linda C. & Christopher M. Laning  
 Kim & Robert C. Larsen  
 Phyllis K. Lathrope  
 Marilyn & Robert Laugen  
 Martie Law  
 Marion Lawder  
 Jennifer Lax  
 Patricia & Byron Layman  
 Dotti Augustin & Chuck Leathers  
 Elizabeth Leavitt  
 Terese Leber  
 Judy Leet  
 Peggy LeMahieu  
 Aimee & Nicholas Leonard  
 Michael Letzring  
 Shirley O. & David V. Lewis  
 Catherine Liddell  
 Terrence Logee  
 Gertrude Long  
 Leo Lopez  
 Jacquelynn Lott  
 Heidi Lowe  
 Sondra Lund  
 Claire Sasaki-Lundgren &  
 Donald Lundgren  
 James W. Lunsford  
 Erick Lux  
 Margaret & James Lynn  
 Sabrina Machado  
 JoAnne Machin  
 Melody MacKenzie & Branch  
 Lotspeich  
 Dawn & Duncan MacNaughton  
 Macy's  
 Marguerite F. Maguire  
 Mary K. Mahoney  
 Laurine J. & Glenn K. Makaneole  
 Lynn Manolopoulos  
 Suzanne & William Marsden  
 Jane K. & Edward H. Marti  
 Mary Ann Massenburg &  
 Robert Purcell  
 Joan Mathys  
 Camilla C. Matsumoto  
 Mary M. Matsumoto

Janis Matsunaga  
 Carol Mattern  
 Sharon Mattern  
 Barbara S. & Michael J. Matzek  
 Elizabeth Maurer  
 Barbara J. & William H. May  
 Carmen & Doug Mayer  
 Mary G. & Robert H. Mazur  
 Sonia Mazurek & John Hagey  
 Kimberly & Mark McAtee  
 Arva M. & Robert H. McCabe  
 Kathryn R. McCool & Dean G. Smith  
 Heather Davidson & William  
 McElhane  
 Brooke McFarland  
 Marcia & Peter McIntire  
 Martha McKee & Thomas  
 McNaughton  
 Cynthia McLean  
 Ailve McNestry & Terence Warner  
 Ms. Tessa McSwain  
 Janice Potter & Robert Meadows  
 Donald J. Meeker  
 Rosemary & Roger Mein  
 Shirley Meneice  
 Nancy J. Merrill  
 Carrie Maier & Raymond Mew  
 Mark Meyers  
 Alexandra Meyn  
 Dorothy Miao  
 Naotoshi Mikasa  
 Carolyn Miller  
 Lucille Miller & John Richard  
 Burkhalter  
 Linda & Peter Milovsoroff  
 Kristina Laidlaw & Scott Mincemoyer  
 Elaine Mirkin  
 Reiko & Darryl Miyasato  
 Rhonda Mizeur  
 Mokihana Pest Control, Inc.  
 Glenn Molander  
 Mia Monroe  
 Ellen T. Rochelle & Michael G. Mooney  
 Patricia Moore  
 Tracy Morales  
 Ann Mori  
 Min L. & Ronald E. Mossman  
 Janet Stoneking & Thomas Mozer  
 Patricia Munsell  
 Randall Murch, Ph.D.  
 Helen & Daniel Murray  
 Lydia & Benjamin Musher  
 Lisa Crampton & Nassib Nabaa  
 Jane E. Koehler & Stephen X. Nahm  
 Cynthia & Patrick Napolitano  
 Barbara E. Neal  
 Eve Neibel  
 Carol Neill

Jennifer Nelson  
 Kari & Robert Nelson  
 Lori & David Neubert  
 Mary Ann & Edmund C. Newman  
 Carolyn M. Nicholson  
 Joanne Niwa  
 Nancy Nott  
 Grazyna Nowak  
 Liz & Glenn O'Dell  
 Noreen Ohai-Daniels  
 Debra Oka & Joseph Yamamoto  
 Anna O'Keeffe  
 Sakae Okuda  
 Virginia Olsen  
 Neva Olson  
 Carol P. O'Neill  
 Linda & Gregory Opgenorth  
 Dorothy & Richard O'Reilly  
 Monika & Peter Ot  
 Alicia M. Otazo-Reyes  
 Mr. Dan Outlaw  
 Susanne Ozols  
 Desiree Palama  
 Aaron Pan  
 Patti Pantone  
 Patt E. Panzer & Carson Zullinger  
 Lindsey Pascua



Sairus Patel  
 Clay Patmont  
 Gale S. Patron  
 Mindy & Leon Pawinski  
 Alison Pease  
 Chris Pendleton & Richard Starostecki  
 Pamela A. Chamberlin &  
 Bernard P. Perlmutter  
 Thomas R. Perry  
 Vilma Pesciallo  
 Michael G. Peskura  
 Susan & Robert E. Peters  
 Barbara & Mark Peterson

Jeanne Petropol  
 Jon D. Pevna  
 Dave Pfeifer  
 Paula Phillips  
 Kathleen Pickett  
 Carolyn F. Pio  
 Hannah Pitstick  
 Angela & Michael Plambeck  
 Plantasia Landscaping  
 David S. Platt  
 Diane Poche  
 John Poehnelt  
 Gordon Poett  
 Nancy & Steven Poulos  
 Ruth & William Poulton  
 Mary Poxon  
 Robin & Samuel W. Pratt  
 Dylan Proctor  
 Thomas Pulling  
 Bruce Purvis  
 Robin Putman  
 Kathryn Quan  
 Nelda K. Quensell  
 Helen & Andre Raine

Vanessa Rickerby  
 William Rickman  
 Robert Riggs & John Riggs  
 Riley Family Revocable Living Trust  
 Elizabeth Ripotola  
 Don C. Roberts  
 Pauline Roberts  
 Susan E. Robertson  
 Barbara M. & S. W. Robeson  
 Kitty Roedel  
 Deborah & Jeffrey Roisman  
 John Rollins  
 Napua Romo  
 Leola C. & Russell K. Rosendaal  
 Marlese & Daniel Roton  
 Laura Ruby  
 Nicole & David Rudolph  
 Carol Keck & David Rupley  
 Nancee Rush  
 Mildred & Craig Russell  
 Roxanne & Todd Rycewicz  
 Princess Leslie Sacha  
 Judy Sahn  
 Saiva Siddhanta Church  
 Yvonne N. & Donald S. Sakata  
 Margit & Janos Samu  
 Judy Saronitman  
 Nancy Sato  
 Gordon Saville  
 Marilyn Robinson & Eric Scharf  
 Nancy & Dennis L. Schmit  
 Nancy & Tim Schmitz  
 Sarah & Paul Schoberg  
 Trish Schooley  
 Heidi Wetzell & John Schreiner  
 Barbara & John Schroder  
 Connie Schwarze  
 Christine Scott  
 David P. Scott  
 Isabelle B. & Michael A. Scott  
 June & John Scott  
 Teresa Scott & Frederick Joseph  
 Cynthia Sechrest  
 Lena & Mark Sell  
 Sharm Shannon  
 Michael Shaver  
 Debra L. Shenk  
 Suzanne Brust & John Shepard  
 Marcia & Bob Sherry  
 Linda Shinas  
 Jason Shira  
 Dr. Elizabeth M. Short  
 Connie Shuman  
 Linda Sible & William Cerbin  
 Linda M. & Robert L. Simon  
 Ranjeet & Diana Singh  
 Martha Singleton & Walter  
 Walkington

SMI Landscaping Architecture, Inc.  
 Betty Smith  
 Karen Smith  
 Merridee & Keith Smith  
 Orphalee Smith  
 Randi Smith  
 Margaret & Stephen Smith  
 Maria C. Snyder  
 William Snyder  
 Rick Soehren  
 Cheryl & Raynard Soon  
 Dennis P. Souza  
 David S. Spain  
 Sarah Spalding  
 Juliana Spath  
 Leinani & Bob Springer  
 Heather & Peter Stanko  
 Allison Stanley  
 Patricia & Shane Stark  
 Raydene & Peter StClair  
 Alison & John Steadman  
 Dan Steinberg  
 John & Ann Steinbrunner  
 Noreen & Lee Steinmetz  
 Nancy Stevens  
 Alice Stewart  
 Brady Stewart  
 Suzanne J. Stolar  
 James R. Stolzenburg  
 Karen Stomberg & Gary Westcott  
 Michal F. Stover  
 Karen & Ron Stratton  
 Patricia & Kendon Stubbs  
 Rosalyn M. Subarton  
 June & Gary Sundberg  
 Sunset Chiropractic Clinic  
 Lisa L. Anderson & William M.  
 Swafford  
 Kay & Clifford Sweet  
 Connie Swyers & Arnold Hergan  
 Paula Szilard  
 Mieko G. Takabayashi  
 Sandra Takaezu  
 Jennifer & David Tanaka  
 Carol T. Tanner  
 Joanne Bloom & Thomas Tanzer  
 Peter C. Tausend  
 Lynn Taylor  
 Terra Nova Travel, LLC  
 Rachel & Dustin Thomas  
 Kevin Thompson  
 Thomson Reuters  
 Elizabeth & Joel Ticknor  
 Pam Kawaguchi & Dean Toki  
 Tim & Tracy Tomkovich  
 Linda & Ken Tomlinson  
 Robin Trinko-Russell  
 Barbara Turecky



Ilyse Rathet  
 Patricia & Charles Raven  
 Lynn & Donald Reed  
 Taylor Reed  
 Dianne A. Reilly  
 Kelli Reilly  
 Thais Repetto  
 Angela Reuser  
 Christy Reynolds & Susan Reynolds  
 Sharon Rheingans  
 Jean & Harold Rhude  
 Bonnie Rice  
 Sally H. Rice  
 Yuliia & Matthew Richard  
 Billie Richardson



Laurita P. & Albert Turner  
 Anna Twiselton  
 Catherine Tzur  
 Marta Janel Ullman  
 Mary Umehara  
 Mary E. Vale  
 Katherine Valier  
 Patricia Van Dyke  
 Debra Van Hyfte  
 Josophine Vanwyk  
 Stormy Bradley-Vasta &  
 Gaetano Vasta  
 Jennifer Vaughn & Cary Fritz  
 Soren Velice  
 Sue & John Verduin  
 Kristi & Jeff Vest  
 Jean Vieth & John Diepersloot  
 C. James Vitus  
 Gabriel Vye & Caroline  
 Reissenweber  
 Gay & Daniel Wallin  
 Joy Wannamaker & John Ouderkirk  
 Margaret L. Wardlaw  
 Susan Warner  
 Melody Ann Watral  
 Gary Wayland  
 Dolores Weiman  
 Champa & Robert Weinreb  
 Julie & Mike Weisbach  
 Doris & Daniel O. Weisman  
 Kimberly Weller & Douglas Gordon  
 Melanie Sifton & Matthew Wells  
 Sara & John Wells  
 Janice R. & David Welsh  
 Alyce Wertheimer  
 Kathleen A. West-Hurd & Steven Hurd  
 Lucy Whatley & Bruce Needham  
 Charleen M. White  
 Elana & Lorne White  
 Judith White & Philip Morgan  
 Mary Whitehill  
 Kristin & Richard Whitworth  
 Leslie Wiedemann  
 Cheri & Mark Wilcox  
 John & Kathryn Wilkins  
 Jody & Richard Williams  
 Kenneth Williams  
 Marsha & Wayne Williams  
 Maureen Wilmot  
 Amanda & Mike Winiarski  
 Julie Wirtz  
 Nancy Wolf  
 Patricia & Joseph Wolfe  
 Mairhofer Wolfgang  
 Pearl Wollin  
 Kathleen Woodward  
 Constance & Mark Wray  
 Talita Medeiros & Daniel Wright

Rose Marie & Douglas Wrung  
 Robert Yamada  
 Tami Yasutake  
 Roy Y. Yoneji  
 Patricia & Arthur Yotsuya  
 Donald K. Young  
 Ann & Frank Young  
 JoAnn Yukimura  
 Cheryl Zaccaro  
 Margaret Zacharias  
 Carlos Zambello  
 Muriel Zetter & James Chambers  
 Marleigh & William Zimmerman  
 Barbara & Michael E. Zins  
 Chris Zuleeg

**\$150-\$249**

Anonymous (4)  
 Patricia P. Adams  
 Jean & Edwin Aiken  
 Stefanie Alexander & Brendan Wilson  
 All Creatures Great & Small, Inc.  
 Lizzie Allen-Perez  
 Denys Alt  
 Jane Altberg & Richard Munson  
 Amazon Smile  
 Susan & Gary Andrews  
 Paula S. Applegate  
 Howard Arnold  
 Raymond R. Ashman & David D.  
 Burgess  
 Sandra L. Atkinson & Jack K. Williams  
 Vicki & Steve Atwater  
 Laurie H. & Robert F. Babb  
 John Bach  
 Giovanna Baldassarre  
 Bruce Baldwin  
 Cara A. Rockwell & Christopher J.  
 Baraloto  
 Susan Baranowski & Dale Rienart  
 Lynn K. Barker  
 Laura Barron  
 Carl Bauer  
 Deborah E. & Donald L. Beduhn  
 Stanley Behrens  
 Karen & Michael Beverly  
 Michael Bill  
 Karen & John Bocquin  
 Stephanie Bott & Cary Self  
 Fred Bove  
 Candice Ethridge & Kevin Bowden  
 Susan L. Bridwell  
 Allyn Bromley & Brian Baron  
 Raymon M. Brown  
 Lynn Buchanan  
 Mary Ellen Buckley & Donalie Bolke  
 Scott Bulfin



Cynthia S. Burke  
 Irana Hawkins & James Butrynski  
 Toni & Gary Carmichael  
 Casper Landscape Design  
 Lucille B. & Michael Ceurvorst  
 Deborah & Edward Charbonneau  
 Kumar Chaundhary  
 Adela & Tomas Chavez  
 Gerry Ching  
 Michelle & Evan Christenson  
 Gerald Chudy  
 Donna Lou Clarke & John Wheatley  
 Wyncia Clute  
 Lynn & Jack Cogan  
 Jackie Pelavin & Mark Cohen  
 Stephanie & Michael Colter  
 Audra Cope  
 Kate & Steve Costa  
 Anne & Bill Coulter  
 Helen Cox & John Latkiewicz  
 Nancy & Thomas Crawford  
 Richard A. Criley  
 Alan B. Curtis  
 Daryl Ducharme & Casper R. Curto  
 James W. Danahy  
 Tracy Davidson  
 Emily Herrick & Michael Denslow  
 Deborah Deutsch & Stephen Hay  
 Gretchen & Rajiv Dewan  
 Anne & Nick Diemel  
 Deborah & John Divine  
 Christy L. & Tom Drumheller  
 Francine & Rick Dullanty  
 Nanigen & Bob Dumity  
 Debra Durant & John Schoendorf  
 Douglas A. Duvauchelle  
 Lydia Agundez & Denton Edwards  
 Beth Ellers  
 Patricia Engelhard  
 Elizabeth Murray & Michael English

Joy & Warren L. Erickson  
Marlene S. Erven  
Charles Espinosa & Roberto Viñas  
Sharon Fisher & Keith Evans  
Thyrza P. Eyre  
Carolyn & David Fairbanks  
Katherine & Timothy Farrell  
Herman Ferreira & Michael Hoard  
Sharon Fitzgerald  
Leslie Fleeman & Davis Jeffries  
Janet Flipert  
Kerry & Hal Floyd  
Teri Floyd  
Rolando Rivero & Maria Font  
Jo-Ann Forster  
Suzanne & Byron Foster  
Christine Fox & Philip Erwin  
Ann & John P. Franzen  
Jeffrey Frelinger & Acey Frelinger  
Deborah & Daniel Freund  
Emilie Fritz Veloso  
Sue Fritzke & Brent Hansen  
Alice & Robert Fujimoto  
Stuart I. & Georgia L. Gardner  
Angelica & Patrick Garvey  
Jan & James George  
Alice Glasser & Jesse Thompson  
Kathleen & Arnold Gold  
Linda Goldberg  
Perry & Joe Goldsmith  
Felicia Sanchez & Jose Gonzalez  
Sheila & Mike Goodwin  
Laurie & John Gosch  
Cherie Gossett & Donald Beaman  
Carol Govan  
Ann F. Green & John McComish  
Susanne J. Les & Tim E. Green  
Mary E. & James Greenwell  
Kate K. Gregg  
Pat Griffin & Thomas Noyes  
Julie & Kevin Grove  
Mr. & Mrs. H. Paul Guess  
Adrienne & Anthony Guida  
Gretchen Hittle & Michael Gustafson  
Robert Gustafson  
Michael C. Gustin  
Isabel & Adi Hacker  
Palmer Hafdahl  
Debbie & Ronald Hagen  
John B. Hall  
JP & Byrd Harrison  
Catherine & Joseph Harrison  
Nevenka & Joseph M. Harverson  
Susan & Jim Hastings  
Alice Hawes  
Charlotte S. K. Hee  
Brooke & Thomas Hemingway  
Gwendolyn & Christopher Hendry

Ann & Thomas Hennessy  
Jack Henning  
Barbara & Neil Henrichsen  
Casady M. Henry  
Lynn & Thomas Henry  
Barbara & Jim Herst  
Laurie K. Ho  
Barbara L. Hobbs  
Carolyn & Bryan Holland  
J. Mika Ashley-Hollinger & Stuart Hollinger  
Bogdan M. Holy  
Pamela & James Homer  
Honolulu Star Advertiser  
Jessica Hooks  
Carli Hoppe & Richard Hoppe  
Chloe & Peter S. Illoway  
Melvin Ing  
Cecilia & Kip Irvine  
Marilyn & Robert Isherwood  
Alivia Peters & Lee Jackson  
Maria C. Jaramillo  
Sylvia M. Joesink-Mandeville  
Sharon F. & Robert S. Johnson  
Sarah & Barry Johnson  
Eelekoa Kanamee  
Freddie Kaufman  
Bronwen & Gregory Keighery  
Nellie Kellett  
Sandra J. & Harry D. Kelley  
Maurice Sprenger & Richard Kempf  
Cynthia & Alan Kempner  
Martha Kent  
Ariane & John Kinnear  
Dr. John T. Kirby  
Shawna & Greg Kittridge  
Joanie Klar  
Eva Klaver & Andrea Kleanthous  
Mona & David Klintstiver  
Ann & Robert Klose  
Suzanne & Thomas Knauss  
Claudia Koepf  
Donna & Denis Kokernak  
Kathleen & Kenneth Kokron  
Rose Krebs & Ace Hodgkin  
Monica Paris & Kurt Kufeld  
Helen & John LaGourgue  
Blossom & Jones Lai  
Geraldine & Marc Laidlaw  
Carolyn & Bob LaMontagne  
Land Strategies Hawaii, LLC  
Kathie Larsen & Cheryl Marland  
Paula & Phu Lau  
Mary Ann Leer & Jules C. Resnick  
Juanita Lefever  
Lorraine Leiser & David B. Taylor  
Mona & David Lemon  
Nancy D. & Tony Lilly

Judi Bogdanoff-Lord & David Lord  
Joan F. Luzney & Renee Lippmann  
Mary L. & David N. Maas  
Nina & Thatcher Magoun  
Patricia & Robert Malcolmson  
Patty & Mike Malone  
Cynthia Manouilidis  
Maui Breadfruit Company LLC  
Carmen Mayo  
John G. McClain  
Leslie McClanahan  
Joanne & David McComas  
Mary & Jack McElligott  
Margaret & Robert L. McGinty  
Heather McLean  
Linda McSwain  
Karin Medigovich  
Olga & David Melin  
Isabel A. Merritt  
Gwendolyn Mitchell & Dana Nicoll  
Edith A. Moe  
Heather & Brandon Moehling  
Nancy Morton  
Barbara & David Moser  
Jennifer Moser  
Sandie & Joe Moss  
Susan Myers  
Laura Nash & Tom Beale  
Marjorie & Kenneth Neal  
Margaret Nee & Frederick Saunier  
Kathryn Neri  
Jacquelyn & James Newman  
Ellen Greene & Duncan Nichols  
Edna & Clifford Nishimura  
Sara A. & Thomas P. Noland  
Blanche Nonoo  
Lois C. & Peter B. Nottage  
Merilee & John Novinson  
Patricia & Edward O'Brien  
Deanna & Brendan R. O'Donnell  
Molly Gray-O'Grady & John O'Grady  
Sada Okumura & John H. Drouilhet  
Debra Olinger  
Sandy Oltz  
Barbara Oppe  
Lori & Bill Orthel  
Kathleen H. & Steven J. Ory  
Ashley Roberts & Nathan Ostic  
Nancy & Carlos Pardeiro  
Judy Parker  
Alisha & Lawrence Pew  
Elizabeth M. Phillips  
Anne Platt  
Jeremy Porter  
Diane & David Powell  
Joann Lachapelle & Derek Prentice  
Professional Service of Coconut Grove LLC

Terry & Scott Radi  
 Lynn Ransone-Fong &  
 Timothy C. Fong  
 Sharlyn Rayment  
 Lisa & Douglas Reale  
 Catherine & David Reando  
 Adair & Michael Reeve  
 Gertrude M. Rehbock  
 Eva LaBarge & Eddie Renner  
 Evonne Revitt  
 Lori & Greg Rhoades  
 Cindy & Gary Rich  
 Stephanie A. Richards  
 Cynthia Dumser & George Richmond  
 Valerie G. Ricordi & Jay Flynn  
 Rita Rieger  
 Jud O. Roberts  
 Arlene Robinson  
 Karen & Kendyl Roman  
 Dana Romsdal  
 Elaine & St. Julien Rosemond  
 Jay Rosenthal & Theodoros  
 Charamoglou  
 Lee Shoon & Robert Rucker  
 Carla & Robert Rugeroni  
 Kristie & Dave Rutherford  
 Renita Samuels-Dixon  
 Martha Sanger  
 M. Cecilia Sanguinetti &  
 Rick A. Del Toro  
 A'na Satara & Paul Satara Bever  
 Michiko Sato  
 Ann Schmidt  
 Carolyn Schneider  
 Frederick W. Schneider, III  
 Marsha Schoene-Langohr &  
 Marshall Langohr  
 Sarah Schoenfeld & Brandan  
 Nakamoto  
 Corina & Rhone Scoggins  
 Phil & Eldean Scott  
 Cathleen Clark & William L. Sealy  
 Marguerite Hoyt & Kenneth Sembach  
 Annette & Siegfried Shalles  
 Sharon & Charles Shedd  
 Gary L. Shores  
 Bernadette Y. Siy & Dane Taylor  
 Kate Snider  
 Camilla & James Sone  
 Cynthia K. & Edwin Sorenson  
 Megan Smith & David St. John  
 Fredrick & Marilyn Stark  
 Jane & David Stern  
 Judy & Will Stevens  
 Nancy L. & A. J. Stokes  
 Liz Strauss & Mark Hughes  
 Kathleen L. Street & Solomon K.  
 Hoopai, Jr.

Stella Swanson & Leslie Frank  
 Karen & David Swearingen  
 Anne & Brian Sweat  
 Annabelle T. Takahashi  
 Melissa & Stephen Tangalin  
 Rosalie A. & Edward S. Tank  
 Rita & John Thibodeau  
 Kim & Ruth Thich  
 Cathy & Herndon Thomason  
 Lesley & Michael Tierra  
 Devi & Chris Town  
 Marilyn Anne Townsend  
 Karen & Doug Truesdell  
 Ada & Roberto Trujillo  
 Freda C. & William E. Tschumy  
 UBS International, Inc.  
 Tara & Jesse Van Eyk  
 Scott Van Gerpen  
 Karen & David Vandervoet  
 Vernize & Nick C. Vera Cruz  
 Martha & Frank Voytek  
 Martha & Fred Wales  
 Pamela & Wesley Warner  
 Victoria Warner  
 Stanley Watt  
 Cathy Moratto & Rich Waxman  
 Ronald Weeks  
 Linda J. & Robert S. Weiner  
 Deena & Donald White  
 Shirley & James Whitfield  
 Judy & Frederick Williams  
 Parker Wittman  
 Mary & Joseph Woelfel  
 Miok & Mark Wolbers  
 Robin Wong  
 Teresa Wyatt & Heidi Hauschild  
 Elizabeth Suarez & James Wynkoop  
 Diana Yankee  
 Julie Yanson & Peter Boswell  
 Elissa L. & Albert E. Yellin, M.D.  
 Mark Zepf  
 Evelyn & Stuart Zimmerman

## \$250-\$499

Anonymous (4)  
 Marjorie S. & Charles S. Abbot  
 Mary Abrams & Gary Cramer  
 Josephine Alessi & Richard Litsky  
 Nancy Alexander  
 Marilyn Alleman & Michael  
 Gleeson  
 Esther & Larry Apple  
 Jill & Tom Archambeau  
 Diane D. Ashley  
 Sharon & Richard Ayres  
 Anne & Raymond Baddour  
 Gayle A. Bainbridge  
 Baja LLC  
 Gillian Robert-Baldo & James Baldo  
 Brenda & George W. Barnard  
 Patrick T. Battle  
 Barbara & David Beasley  
 Janet & Don Bednarczyk  
 Charles Belin  
 Nancy Benson & James Caulfield  
 Karen & Ronald Bereit  
 Catherine Wilson & Jake Bernard  
 Deborah Binder & Gaetan Veilleux  
 Bionic Brand Lab  
 Beryl B. Blauch  
 Alison Blessing  
 Mamie & Charles Bolender  
 Victoria de Santos & Lars Borg  
 Karen Leonard & Roger Bredeson  
 Linda & Charles Brixey  
 Johannah Brown  
 Marina & William Brown  
 William Brown & David Murray  
 Lynn & Alvin Bunis, Jr.  
 Teresa Buoniconti  
 Ana Buraglia  
 Gail Burke  
 Krystyna Ermer & Eric Byron  
 Josephine & Michael Camarata  
 Laura & Joe Canciamilla  
 Vickie Caraway  
 Naomi Matias & Michael Carlsson  
 Kathryn & Bruce Carrick  
 Barbara Engelter & Jean Carufo  
 Patricia & Lawrence Chaffin  
 Bonnie Joe & Gregory Chang  
 Elvrine Chow  
 Cynthia L. Christoph & James L. Greve  
 Ruth Clarke  
 Lisa & James J. Cleary  
 Merrilee & Jesse Taylor Cole  
 Pamela W. Cole  
 Jane & Bob Colesar  
 Ola & Gregg Connolly  
 Jan & Bruce Conroy



Chloe E. & Lawrence P. Cook  
 Alison & Robert Corcoran  
 Carlos Corradine  
 Camila Cote  
 Anna Cox & Dan Harrow  
 Amy & Ray Crawford  
 Sandra & Donald Crocker  
 Andrea & Ron Crown  
 M. Victoria Cummock  
 Elizabeth Kincannon & Daniel  
 Dahlberg  
 Dalla Rizza & Associates  
 Marianne Daniels  
 Nancy & Earl Dannen  
 Dickie & Rick Davis  
 Barbara Dawicke  
 Evelyn de Buhr & Frank D. Rothschild  
 Lauren De Lavalette  
 Theresa & David Della Lana  
 Sherri Deutsch-Atwell  
 Elizabeth Diaz de Villegas  
 Machi & Greg Dilworth  
 LuAnn M. & Jeff F. Doerzbacher  
 Donationxchange  
 Karen & Jon Downie  
 Georjana Barnes & David Drubin  
 Maria & Lewis Eastlick  
 Toby & Michael Eleff  
 Debra K. Ellers & Joseph D. Grooms  
 Suzanne & Thomas Ellis  
 Jan D. & Edward G. Elowe  
 Elena Evans  
 Emory D. Evans

Helen & Glenn Everitt  
 Kim & Gary Eyring  
 Patricia Fallbeck & Thomas Timmons  
 Ling & David Farrell  
 Deborah & Thomas Farrell  
 Gerda & Eyvind M. Faye  
 Kathleen Fernandez  
 Michal & Dana Finney  
 Michael Flagg  
 Carmen Tebbe & Neal Flesner  
 Bernadette & Charles Formoso  
 Ellen & Lyn Fox  
 Anita Freeman  
 Rebecca K. & Richard W. Fries  
 Fieldine Gallivan  
 Pamela Garrison  
 Ann & Allan Geisendorfer  
 Susan F. & Emile J. Geisenheimer  
 Kathy Mayer & Barney Gerber  
 Sharon & Donald Gerber  
 Steve & Kay Germiot  
 Deborah Giles & Charles Simrell  
 Cindy & Tom Goff  
 Rick Golba & Ted Faigle  
 Carolyn Gold & Matthew Gold  
 Sheryl Gold  
 Ann Goldman  
 Anne & Edwin Gordon  
 Janet & Wylie Greig  
 Jamie & Michael Griffith  
 Patricia Grogan & Naomi  
 Grogan-Hurlich  
 Ronnie Grover-Kalthoff &  
 David Kalthoff  
 Laura Guitar  
 Suzanne & James Gullett  
 Linda & Robert Hacker  
 Halau Hula Kamamolikolehua  
 Michael Hamilton  
 Kayla Justice & Tyler Hamilton  
 Kathleen & Edward Harcharik  
 Susan Harder  
 Beverly J. Harrington  
 Cynthia & Robert Harris  
 James F. Harrison  
 Susan & Michael Harrow  
 Brian Hart  
 Richard Hatcher  
 Bonnie & Eric Helpenstell  
 Margaret Hernandez  
 Margo L. & Albert Hofeldt  
 Lauren & Mark Hofer  
 Corbett & Michael Hoffman  
 Dr. James Holbrook  
 Edna & Keith Holdeman  
 Carolyn & Jerome Hollander  
 Susan & Bill Holliday  
 Lorraine Hubsch

Katherine & Rupert Hucker  
 FranÃ§oise Ibars  
 'Ilokepa 'Imaikalani  
 Diane Isonaka & David Galas  
 Susan & Ira Jacobson  
 Phyllis & Richard Jarke  
 DeVonia & Winsor Jenkins  
 Sharon & Mark Jillson  
 Cynthia P. & Lynford M. Johnson  
 Nancy Johnson & Louis Johnson  
 Jeffrey K. Jones  
 Kay Jones & Kelley Jones  
 Tamara Jones  
 Jupiter Island Garden Club, Inc.  
 Margaret M. & Joseph E. Kalet  
 Judith & Michael Kane  
 Jill Katz  
 Matthew Katz  
 Sabra Kauka  
 Wendy & Thomas Kelly  
 Lynn & Thomas Kevern  
 Monica & Alan B. King  
 Louise Woerner & Don Kollmorgen  
 Mary Kopitzke & Robert Kolosky  
 Carol & Yves Kraus  
 Michiel Niemeijer & Scott Kuester  
 Zoran Kuzmanovich  
 Pat Kyle  
 Peter Laird  
 Stephanie Lavender & Dennis  
 Hearing  
 Julie Spielman & Richard Lee  
 David & Evelyne Lennette  
 Stephen Leon  
 Jennifer & Dennis Lester  
 Carolyn G. & Richard C. Lindberg  
 Bonnie & Curt Lofstedt  
 Joan L. & Paul C. Loizeaux  
 Joan & Gerald Lyke  
 Carol A. Marcotte  
 Cynthia S. & John R. Hummel  
 Janice S. & Russell E. Martenson  
 Sandra & Robert Mauceli  
 Janet L. Mayfield  
 Tenelle & Riley McCormack  
 Marye L. & Sam A. McCroskey  
 Linh & David McDonald  
 Cathleen McGreal & William Miller  
 Barbara & Laureston McLellan  
 Tara & Steven McNamara  
 Sandra & Bruce Mehringer  
 Deborah Melville-Henry &  
 Carlee Henry  
 Karen & Paul Memrick  
 Vickie S. & Mark E. Meranda  
 Virginia L. Mercedes & William B. Karst  
 Kathy & Wayne Metcalfe  
 Kevin Millett, Holo Holo Charters



Linda & Daniel Momohara  
Milica Morman  
Sarah & Jay Munson  
Angeli Murthy  
Malleh Murugesan  
Adele Myers  
Mary Navarro  
Marivi Nevin  
Helen J. Nicastrì & Brian Burry  
Linda & Carl Nordstrom  
North Tustin Veterinary Clinic  
Robert & Gisela Norwood  
Maureen & Jonathan Novaco  
Mary & Myron Oakland  
Theodora & Howard Oberlander  
Meaghan O'Connor  
Mrs. Ethel Oda & Mr. Daniel Anderson  
Maryam Orandi-Rasekh  
Walter Orth, Jr.  
Karla & Kelly Osborne  
Julie & Craig Pacini  
Nancy Scanzon & David Page  
Suzanne Koptur & John Palenchar  
Marley A. Palmer  
Hélène M. M. Pancoast  
Janice & Rodney Pascua  
Lucinda D. Patterson  
Chris Pedersen  
William E. Pelham & Maureen  
Cullinan Pelham  
Judith T. & James L. Perzik  
Carolyn L. & Norbert Pfahler  
Neeru & Michael C. Phillips  
Alejandro Pino  
Madeleine & Harvey Plonsker  
Pamela & Bob Plumbley  
Linda E. & Alan Pollack  
Emma & Richard Pompetti  
Ilyse Rathet & Ronald Post  
Arun K. Puri  
Suzanne E. & Walter S. Purvis  
P. Genie Trapp & Tom A. Ranker  
Julie & David Ransom  
Paul B. Redman & Dean O. Berlon  
Elizabeth & Edward Renaltner  
Esther & Monroe Richman  
Keith Robinson  
Raul R. Rodriguez  
Stephen Roger  
Lisa & David Roth  
Carol & Howard Rubinson  
Barbara Nelson & Steve Rush  
Emily Sullivan & Robert Ruwitch  
Lillian Sagebien  
Ann K. Sakai & Stephen G. Weller  
Thomas & Cathryn Sakiyama  
Connie & Richard Sarkisian  
Elizabeth & Bill Scamahorn

Lorraine & Gregory Scaven  
Victoria & Jeffrey Schmidt  
Larry & Colleen Schokman  
Catherine & Edward Scott  
Paige Searle & John May  
Robin & Ned Selfe  
John Sherfese  
Julia Sherwin & Michael Haddad  
Michael Shpizner  
Mary Shuford  
Sima & Peter Siegel  
Dr. Don Simonet & Mrs. Marcia Austin  
James C. Skelton  
Barbara & Richard Smith  
Clifford W. Smith  
Susan Southwick  
Catherine M. Steinbach & Paul Garcia  
Cherise & Roger Still  
Tamara & Max Strang  
Matthew Sullivan  
Lorrie & Donald Swartz  
Cynthia & David J. Talaber  
Georgia B. Tasker  
Jane & Ken Taylor  
Cheryl L. Teague & Steven C. Whitney  
Bonita Thornsby  
Wendi Tow  
Susan Uchida  
Annie R. Uhrich  
Deborah Vazquez  
La Rhea & Bruce Villinger  
Jan Vitrofsky  
Lona & David Voellinger  
Donna & James P. Vogler  
Janice Von Thaden  
Shellie Vue & Shoua Xiong  
Tammy & Mark Waleski  
Barbara A. & James P. Walsh  
Kathy Weiss  
Gregory Welker  
Petra G. & Mark A. Wells  
Emilie & Steve Wernick  
Sandra K. & Robert D. Westfall  
Heidi & Andrew Whitman  
Lorraine & Anthony I. Wichman  
Theresa & Peter Wiederoder  
Carol & Gaylord H. Wilcox  
Aaron Winshall  
Kathryn Wiser  
Lisa Wisotzky  
Janet & Thomas S. Witten  
April & Justin Wolf  
Cecily Wong  
Julia Wu & Mark Dodd  
Matthew Yale  
Mary M. Young  
Your Cause, LLC Trustee  
Michael Zimmerman

## \$500-\$999

Susan & Thomas Abell  
Linda & Thomas Adams  
Terry Ainsworth  
Patricia & Nylen Allphin  
Altman Insurance Services Inc.  
Ann S. & Eugene C. Anderson  
Merritt & John Atwood  
Elizabeth C. Baker  
Scott Barkow  
Ricki J. Bell  
Daniel Boesz  
Mary E. & Jeffrey T. Bretz  
Laurie & Drew Brown  
Kate & Bert Bunnell  
Doris & Richard Cellarius  
Janna & Bruce Chandler  
Lien & Robert Chen  
Carole C. Chun  
Biana Demarco & Cliff Comfort  
Mary M. Cooke  
Laura & George Crabb  
Wendy & Anthony Craven  
Richard L. Danforth  
Carolyn S. & Gordon K. Davidson  
Carol Ann Davis & Norman Brand  
MaryLin Dedeaux  
Lin & Shaun Deola  
Diane Dickhut  
Divine Tours, Inc.  
Judy & John Ernst  
Jennifer Etter  
Denise Farwell & Patricia Mayer  
Fleming Revocable Trust  
Linda & David Frankel  
Celia Vigil & William Galcher  
Kathy & Jim Gallucci  
John Game  
Garden Island Resource  
Conservation & Development, Inc.  
Joan C. & Larry Gehrke  
Linda & Phillip Greene  
Gregory J. Scaven Family  
Charitable Fund  
Marcia & John Harter  
Frank O. Hay, Jr.  
Jay Henderson  
Claudia & Ronald Hill  
Kirsten N. Hines & James A. Kushlan  
Julie & David H. Hodge  
Elizabeth W. & Zachary Hulsey  
Judy Hunt  
Gary Ide & Paul Kraselsky  
Insurance Factors  
John & Margaret Ueleke Donor  
Advised Fund  
Douglas & Sandra Johnson

Nancy & John Jost  
Susanne S. Kayyali  
Janet & Adam Killerman  
Kukui'ula Development Company  
(Hawaii), LLC  
Silvia & George Larrauri  
David Lassner  
James & Nancy Liddil  
Living Foods Market & Cafe  
Maxine Long  
Natasha & John Lowell  
Steve Lowsky  
Francesca Luzuriaga & Ross Larkin  
Frank MacMurray  
Lori Erreca & Ronald Manzoni  
Dr. Flor Mayoral  
Tracey & Sally McCullough  
Katherine Merrill  
Camilo Miguel, Jr.  
Julius Miller & Robert Miller  
Cyrus M. Monroe  
Wynne Szeto & Gregory Moore  
Michael Moore  
Carol A. Nance  
George Neary  
Anne P. & Harry Newman  
Melissa & Neal Norman  
Mr. Jaime Odabachian & Ms.  
Johanna Boccardo  
Sandra & Wilcox Patterson  
Shirley & Ara G. Paul  
Janet M. & Jay E. Peace  
Seog Soon Pearson & Stephen D.  
Pearson  
Estela Poo  
Scarlett Presley & Fleming Crim  
ProSERVICE HAWAII  
Pulp Figures  
James A. Wiseman & Diane Ragone  
R B/Hazard Family Charitable Trust  
Frederica Lawrence Sandoe  
Sara Solberg & Beverly Tong  
Lauren & Edward Spilsbury  
Susan & Henry H. Stauffer  
Leah M. & John S. Stroup  
Sylvia B. & Jack F. Sweeney  
Sylvia K. & James L. Thacker  
The Kauai Marathon  
The Michael N. Rosenberg  
Revocable Trust  
Lydia Thomas  
Kate Grace & Peter Thome  
Melissa Tremblay & Owen Prentice  
Tunu Puri Charitable Foundation Inc.  
Margaret R. & John W. Ueleke  
Nancy Reiersen & John Uribe  
Alexandra Van Romondt  
Ruth & David M. Waterbury

Jay P. Webster  
Olivia Collins-Wilmot & David Wilmot  
Bonnie & William Wilson  
Bonnie & David Wolfe

### **\$1,000-\$4,999**

Anonymous (3)  
Adobe  
Alan Akana  
Jon J. Alexiou  
Anna & David Anawalt  
Peter & Anne Anderson  
Barbara Anderson  
Arquitectonica International  
Corporation  
Betsy S. Atkins  
Bank of America Matching Gifts  
Julia & William Beckham  
Monika Betts  
Terry Blechman  
Patricia & Richard Bohn  
Gerry Weinmaster & James Boulter  
Beatrice Bowles  
Diane M. & David Buck  
Cristina Calzadilla & Tony Gonzalez  
Catherine & Michael Campbell  
Jill & Donald Canaparo  
Michael Canorro  
Carol Case  
Wendy W. Chase  
Mary Mackiernan & Robin D. Clark  
Hazel & Gordon Coates  
Susan & Charles Cobb  
Eve & Martin Cole  
Nancy & Edward Conner  
Lucy B. & Steve Cookson  
Michael Costello  
Margit & Lloyd E. Cotsen  
Carol & Ronald Croatti  
Donald Darst  
Martha R. Davis & Alix Ritchie  
Mary C. & Steven R. Day  
Cayetana de la Quadra-Salecado &  
Jose De Churtichaga  
Debra DeMarco  
Penelope W. & James W. DeYoung  
Frances Dillingham  
Dianne & David Drought  
Louisa C. Duemling  
Phyllis Duke  
DuPont Pioneer  
DuPuis Group  
Ms. Anne G. Earhart  
Earthworks Pacific, Inc.  
East West Partners  
Michele & Roger Engemann  
Valerie & Robert English

Environmental Partners, Inc.  
ET Services LLC  
Terry Micheau & Rob Evans  
Extra Credit Inc.  
Dianne Farley  
Martin Ferreira de Melo  
Lisa & Timothy M. Fitzgibbon  
Jane & George Fogg, III  
T. Jack Foster, Jr.  
Hedda & Lutz Franz  
Elizabeth Frautschi  
Tina Freeman & Philip Woollam  
Sandra L. & Reginald P. Gage  
Jack & Janet Gillmar  
Kathleen & James Goldsmith  
Pauline Goldsmith  
Laurie & Richard Goldsmith  
Karen & Richard M. Goodale  
Myriam & Marc Grad  
Grand Hyatt Kaua'i Resort & Spa  
Margaret (Garth) S. Greene  
James Guerber  
Yvette & William H. Hackett  
Patricia S. & William J. Hagenah  
Clifford Hague  
Beryl & Rex Hamilton  
Mary E. Hanahan  
Elizabeth & Scott M. Haskins  
Hawai'i Pacific Health  
Amy Dana Hewitt  
Doug Hillman  
Holbrook Travel, Inc.  
Irene & Oliver Holmes  
Kathleen & Herbert Hong, Jr.  
Paul Horner  
Donna M. Howard  
Kristin K. & Thomas J. Hughes  
Pamela K. & Roger Hull  
Robert Scott Jackson  
Jane Woodward Revocable Trust  
Davene Januszewki  
Jhamandas Watumull Fund  
Anna Karen Johnson  
Sallye & James Jude  
Gina & Raymond Jungles  
Marisa & Scott Kagan  
Ka'iwa Construction Inc.  
Kaua'i Marriott Resort  
Kauai Coffee Company, LLC  
Kauai Nursery & Landscaping, Inc.  
Mrs. William A. Kaynor  
Charles G. King  
Thomas D. King, Jr.  
Kimberley & Douglas M. Kinney, Jr.  
Peggy & Emerson Knowles  
Eliza & Michael Koepfel  
Cheryl & Charles Kozloff  
Karolyn J Kramer & Frank Cohen

Suzanne D. Kuser  
 Karen Olson & R. Kent Landmark  
 Lynda L. LaRocca  
 Natalie T. & David R. Lashmit  
 Yonna & Fredrick Levine  
 Wendy A. Levitz & Sanjiv S. Desai  
 Shiham Colegial & Lorenzo Lorenzo, Jr.  
 Elizabeth & Bruce Mahaffey  
 Martin & Eve Cole Charitable  
 Gift Fund  
 Rae & Edward P. Matthews  
 Joyce & Edward R. McDowell  
 Clay & Don McGuire  
 Cynthia & Terrance P. McMahon  
 Ruth C. Mead  
 Amy & Jack Meyers  
 MFW Topham Fund at Schwab  
 Charitable  
 Microsoft Matching Gifts Program  
 Bethany & Robert B. Millard  
 Ivonne & John Miller  
 Ruth H. Mitchell  
 Caroline & Tad Miura  
 Juliet Moncrief  
 Marianne C. Montoro  
 Lynne Johnson & Randolph Moore  
 Mountainfilmia Incorporated  
 Celeste & William T. Muir  
 Caroline H. and Charles Neal  
 Karl Niklas  
 No Ka Oi Landscape Services  
 Marie & Steve Nock  
 Helen Norton  
 Pauline & William Nutting  
 Suzy C. Orb  
 Outfitters Kauai, Ltd.  
 Judith E. Parker  
 Kathy Parks-Suarez  
 Gail Paster  
 Pharmasol  
 Thomas E. Powell, III  
 Lazaro Priegues & Mike Hernandez  
 Ilona & James Priest  
 Diana & Frederick H. Prince  
 Mrs. Janice C. Pryor  
 Susan & Wm Randall  
 Raven Foundation  
 Alita & Nathaniel Reed  
 Andrea L. Rice  
 Sally Martin & Scott Robinson  
 Shelagh & Thomas Rohlen  
 Katherine & Laurence Ronan  
 Susan & John Rothchild  
 Kim Rowley  
 Royal Botanic Garden Sydney  
 Camila Salvisberg & Solomon Barnett  
 Mary & Federico J. Sánchez  
 Katherine & John Scarborough

Karen & Paul Schlather  
 Patricia O. Schleuning  
 Stephanie & Ken Schwartz  
 Hillary & Constantine Scurtis  
 Martin E. Segal & Yolande Rodier  
 Joan & Lynn Seppala  
 Shioi Construction Inc.  
 Susannah M. & John K. Shubin  
 Debra G. Speyer  
 Penelope & E. Roe Stamps  
 Marilyn & Tom Sumner  
 Noni Sweet  
 Phyllis E. Swindells  
 Syngenta Hawaii, LLC.  
 Jeremy I. Tabak  
 Linda & Leighton Taylor  
 Jocelyn D. Tennille  
 The Good Works Foundation  
 Mary & Ken Thompson  
 Vann & Parker Thomson  
 Oakleigh Thorne  
 Tire Warehouse Kauai  
 Michaline & Matthew Todd  
 Cathy & Michael Topham  
 Mary & Michael Trueblood  
 Christen & Christopher D. Turner  
 Christiane & Christopher Tyson  
 Linda & Joe Upton  
 Lenita C. & Henk van der Werff  
 Chrystal Vang  
 Virginia & Sander Vanocur  
 Pauline & Melvin Ventura  
 Susie & Walid Wahab  
 Heather Waters  
 Indru & Gulab Watumull  
 Paul Weaver  
 Sharron Weber  
 Mary E. Weinmann  
 Roya & Henry Weyerhaeuser  
 Johnalynn & Charles (Chipper)  
 Wichman, Jr.  
 Myron A. Wick, III  
 Jane Woodward  
 Georgene E. & Edwin Y. Yamada

**\$5,000-\$9,999**

Anonymous (1)  
 Stephanie Lerner Ansin & Spencer  
 Stewart  
 Bilzin Sumberg Baena Price &  
 Axelrod LLP  
 Lauran Bromley  
 Andre Carothers  
 Center For Cultural & Technical  
 Interchange Between E&W Inc  
 Joan G. Evans  
 Harriet S. & Eric P. Fraunfelter

Gina & Peter Gardner  
 Sarah & David Goodale  
 Roberta Haas  
 Cara Gould Holmberg & David  
 Holmberg  
 Julius Lewis  
 Donald R. Logan  
 Lin Lougheed  
 Robert Malott  
 George G. Matthews  
 New Place Fund  
 Jill Penman & Matthew Kujawa  
 Annie Seipp  
 Louise M. & Richard A. Steenblik  
 The Bromley Family Charitable Fund  
 Catherine & Michael Topham  
 Christina B. & Reed C. Wilson



**\$10,000-\$24,999**

Patricia P. & Harlan C. Amstutz  
 Georgette F. Ballance  
 Baptist Health South Florida  
 Constance L. & Thomas Broz  
 Martha W. Cox  
 Mary M. Cudahy  
 Carol D. & Martin Dickinson  
 Jan D. Elliott  
 Andrea Fahnestock & George  
 Hambrecht  
 Adaline H. Frelinghuysen  
 Simon Gerson  
 Laura Ray & Donald W. Y. Goo  
 Katherine & Scott Grainger  
 Priscilla & James Growney  
 Diane B. Heller  
 Molly & Jock Hooper  
 Mary Hulitar

Institute of International Education  
of the Christensen Fund  
Kawailoa Development, LLC  
Cynthia King & Pierre Bellamare  
Brigitte & James Kishlar  
Koloa Rum Company  
Susan E. Lynch  
Anne MacDonald-Korth &  
James Korth  
Betsy K. Matthews  
Margaret McDermott  
Marion S. & David G. Meissner  
Patagonia Works  
Carol & David Pratt  
Teita & Thomas L. Reveley  
Diane & Michael Rosenberg  
Roberta & Roger Rosenberger  
Cynthia & Raymond L. Salley  
Patricia W. Sheehan  
Carey & Anthony Sutton  
Heather & Richard Waters  
The S.W. Wilcox Trust

### **\$25,000-\$49,999**

Leslie M. & David H. Clarke  
Ceseli & Hugh Foster  
Georgiana Ducas Charitable Trust  
Glenn & Jane Goldsmith  
Mary & James W. Griffith, Jr.  
Ruth F. & Benjamin C. Hammett  
Heather & Patrick Henry  
Thomas D. Hewitt  
Katherine G. & Wayne Richardson  
Catherine S. Rodriguez  
Barbara K. Sweet  
Jeanne R. & Charles R. Wichman

### **\$50,000-\$99,999**

Bessemer Trust  
\*Phyllis A. Callaway  
Elizabeth H. & Douglas  
McBryde Kinney  
Cynthia & Merrill L. Magowan  
William R. Kenan, Jr. Charitable Trust  
Judy C. Webb  
John D. Weeden  
Nicole S. Williams &  
Lawrence L. Becker

### **\$100,000 & UP**

Motoko T. & Gordon L. Deane  
Thomas S. Kenan, III



## **FOUNDATIONS**

Anonymous (7)  
Acacia Foundation  
AD International, LLC  
Alexander & Baldwin Foundation  
Annie Sinclair Knudsen Memorial  
Fund of the Hawai'i Community  
Foundation  
Atherton Family Foundation  
Bristol-Myers Squibb Foundation  
Catherine S. Rodriguez Family  
Foundation  
Cobb Family Foundation, Inc.  
Colcom Foundation  
Cox Foundation, Inc.  
Edward & Nancy Connor Fund at  
the East Bay Community Fdn  
Engemann Family Foundation  
First Hawaiian Bank Foundation  
Florida International University  
Foundation, Inc.  
Foster Family Foundation  
Fred Baldwin Memorial Foundation  
Frost Family Fund of the Hawai'i  
Community Foundation  
Full Circle Fund of RSF Social Finance  
GE Foundation  
George P. & Ida Tenney Castle Fund  
Goodale Family Fund of the Hawai'i  
Community Foundation  
Growney Family Fund of the Hawai'i  
Community Foundation  
GuavaGar Westfall Kauai'i Fund of  
the Hawai'i Community Foundation  
Harold K.L. Castle Foundation  
Hawai'i Community Foundation  
Hawai'i Conservation Alliance  
Foundation  
James Deering Danielson Foundation  
Japan Ecology Foundation  
Jhamandas Watumull Fund  
Kauai Island Utility Cooperative

Korth Family Foundation Inc  
Laila Twigg-Smith Art Fund  
Malott Family Foundation  
Marisla Foundation  
Matson Foundation  
MillsDavis Fund of the Edwin W. &  
Catherine M. Davis Fdn  
National Geographic Society  
North Kauai Fund of the Hawai'i  
Community Foundation  
Office of Hawaiian Affairs  
Omidyar 'Ohana Fund of the Hawai'i  
Community Foundation  
Pfizer Foundation Matching Gifts  
Program  
Phyllis H. & William H. Evans  
Charitable Foundation  
Qualcomm Charitable Foundation  
Raven Foundation  
Reuben H. Fleet Foundation Fund at  
the San Diego Foundation  
Stamps Family Charitable  
Foundation, Inc.  
Taniguchi Deane Family Foundation  
The Beatrice Bowles Charitable  
Fund at Schwab Charitable  
The Bromley Family Charitable Fund  
The Bullitt Foundation  
The Ceres Trust  
The Charles Engelhard Foundation  
The Copriviza Family Charitable Fund  
The Donald R. Logan Charitable  
Fund at Schwab Charitable  
The Good Works Foundation  
The Henry Foundation  
The Joy & Lief Erickson Foundation  
The Miami Foundation  
The Mohamed bin Zayed Species  
Conservation Fund  
The Nelson Mead Fund  
The Rhoades Foundation  
The Rob Evans Charitable Fund of  
Horizons Foundation  
The San Diego Foundation  
The Thomas S. Kenan Foundation, Inc.  
Traut Carson Fund of the Hawai'i  
Community Foundation  
Tunu Puri Charitable Foundation Inc.  
Victoria S. & Bradley L. Geist  
Foundation  
Virginia & Colin Lennox Botanical  
Research Trust Fund of the Hawai'i  
Community Foundation  
Waimakua Foundation  
Wayne & Wendy Holman  
Foundation  
William S. & Janice R. Anderson  
Foundation



## GOVERNMENT GRANTS

British Columbia Institute of  
Technology  
County of Kauai  
County of Maui, OED  
Florida Department of State  
Miami-Dade County, Florida

## GIFTS-IN-KIND

Allison Langer Photography  
American Airlines  
Anthuriums and More  
Aquamarine at Fontainebleau  
Arborcare, Inc.  
Aunty Liliko'i Passion Fruit Products  
Blue Ginger  
Botanics Wholesale, Inc.  
Brennecke's Beach Broiler  
Bullis Bromeliads  
Cinnante Photography  
Cliff & B Jewelry  
Country French  
Detlev Salon & Spa  
Diageo  
Dragonfly Expeditions  
Essential Massage  
Galloway Farm Nursery  
Garden Ponds  
Goldsmiths Kauai, Inc.  
Grand Wailea  
Gretchen Scott Designs  
Hana Ranch Store  
Hanalei Colony Resort  
Harry's Pizzeria  
Hirni's wayside Garden Florist  
History Miami  
Holo Holo Charters  
Grand Hyatt Kaua'i Resort & Spa  
Image Beauty Spa  
Isabel Fine Home Accessories  
Jaguar Hospitality Group  
Joe's on the Green  
Johari Hair Cuttery & Health  
Emporium  
Kaua'i Marriott Resort  
Kauai Beer Co.  
Kauai Nursery & Landscaping, Inc.  
Kauai Paradise Heirlooms LLC  
Kauai Seascapes Nursey, Inc.  
Kikiaola Construction Co.  
Ko'a Kea Hotel & Resort  
Koloa Landing Resort at Poipu  
Koloa Rum Company  
Kristine Michael  
Krystal Sasso Jewelry Designs  
Lappert's Hawaii

Lawai Beach Resort  
Lulu in the Grove  
Maile Lani  
Mama's Fish House Restaurant & Inn  
Market Boutique  
Mary Louise Designs, Inc.  
Mayfair Hotel & Spa  
Mena Catering  
Merriman's Fish House  
Mill House Maui  
No Ka Oi Landscape Services  
Oasis Collection  
Orchid Alley Kauai  
Outfitters Kauai, Ltd.  
Pecans Day Spa  
Pilates in the Grove  
Plumeria Sun  
Poipu Bay Golf Course  
RF Orchids, Inc.  
Royal Bathroom  
Royal Caribbean International  
Sapore de Mare  
Schneider Eye Care  
Shoots & Roots Bitter  
Skyline Eco-Adventures  
Sonesta Hotel & Suites Coconut Grove  
The St. Regis Princeville Resort  
Sueno Del Mar Resort  
Tabora Gallery  
Tasting Kauai.com  
TD Food Group, Inc.  
Ted Baker London  
The Beach House Restaurant  
The Club at Kuku'i'ula  
The Hanalei Dolphin Restaurant  
Travaasa Experiential Resorts  
Unearthed Vintage  
Van Moy Associates  
Via Verdi Cucina Rustica  
Waimea Plantation Cottages  
Whole Foods Market Hawaii  
Zoo Miami

## TRIBUTE GIFTS

***In Honor of Suzanne Ellis***  
Michael Canorro  
Steven Thomas Thatcher  
***In Memory of Ms. Gail S. Gilman***  
Lynne S. & Glenn N. Ebisui  
***In Honor of Mr. Thomas D. Hewitt***  
Cathy & Herndon Thomason  
***In Honor of Mrs. Betsy K. Matthews***  
Anonymous  
***In Memory of Mrs. Carol A. Nance***  
1st Community Insurance Services  
Joyce G. Anglemyer

Esther Back  
Roy Buduan  
California El Camino CPCU  
Society Chapter  
Hazel & Gordon Coates  
Suzanne & Thomas Ellis  
Rebecca K. & Richard W. Fries  
Sandra L. & Reginald P. Gage  
Glenn & Jane Goldsmith  
Edna & Keith Holdeman  
Mildred P. Kattan  
Janice Lefever  
Juanita Lefever  
Rae & Edward P. Matthews  
Edith A. Moe  
Patti Pantone  
Emma Reardon  
Margit & Janos Samu  
Marilyn Seligman  
Stormy Bradley-Vasta &  
Gaetano Vasta  
Georgene E. & Edwin Y. Yamada

***In Honor of Mr. Robert Nishek***  
David Goldhaber

***In Memory of John H. R. Plews***  
Keith Robinson

***In Honor of Carol Pratt's Birthday***  
Anonymous

***In Honor of Mr. & Mrs. David W. Pratt***  
Sandra & Wilcox Patterson

***In Memory of Mrs. Lillian C. Sawai***  
Jan Asari  
Susan & Roy Asato  
Carlsmith Ball LLP  
Patricia & Arthur Yotsuya

***In Memory of Mr. Hideo Teshima***  
Yvonne N. & Donald S. Sakata

***In Honor of Charles (Chipper) R. Wichman, Jr.***  
Doris & Richard Cellarius  
William Garnett

***In Honor of Charles R. Wichman***  
Johnalynn & Charles (Chipper)  
Wichman, Jr.

***In Honor of Jeanne R. Wichman***  
Johnalynn & Charles (Chipper)  
Wichman, Jr.

***In Memory of Elizabeth Dillingham Wick***  
Myron A. Wick, III

\* Denotes anonymous donor

# Thank You to all our 2016 Volunteers

Our thanks to all of our  
amazing volunteers  
who generously gave  
their time and service to  
NTBG throughout 2016.

Joan Aaanavi  
Tom Abell  
Nilda Acevedo  
Patty Adams  
Susan Adams  
Clarence Aki  
Phyllis Albert  
Barbara Alexander  
Henry Alexander  
Nancy Alexander  
Rick Alexander  
John Aloian  
Sandy Ambrose  
Todd Anderson  
Doug Archibald  
Jana Argersinger  
Cyd Arrington  
Tammy Ashworth  
Susan Atherley  
Richard Atwell  
John Bach  
Carmen Baires-Smith  
Ginna Baldassarre  
Edie Balik  
Georgette Ballance  
Lynn Barker  
Brenda Barnard  
Michelle Barros  
Gideau Bassing  
Autumn Bauman  
Jennifer Bauman  
Jennifer Bauman  
Gail Beckham  
Trevor Bellwood  
Flossie Bergum  
Rod Bergum  
Roger Berrier  
Barbara Bettes  
Kevin Blank  
Patti Blank  
Mark Blanyney-Moore

Audie Blevins  
Johanna Boccardo  
Carol Bockman  
Jeanette Bonilla  
Kayla Bonnette  
Christina Boudreau  
TeeJay Boudreau  
Joan Boxall  
Ken Boxall  
Gianna Brach  
Karen Bradley  
Stormy Bradley  
Kathleen Bravo  
Diane Breitenfeld  
Dorval Breitenfeld  
Neil Brosnahan  
Love Brown  
Melanie Browne  
Giselle Bryant  
Kathryn Buder  
Merilee Buehler  
Alejandra Bunster  
Annaka Burlingame  
Bill Butler  
Yvonne Byers  
Rhain Campbell  
Won Campilango  
Catherine Cannon  
Katie Cannon  
Veronica Carrillo  
Jesse Castro  
Joyce Caudell  
Diane Chait  
Ben Chester  
Chris Chilton  
Kama Chock  
Marion Chow  
Rosario Chozas  
Abishai Christensen  
Bob Clabo  
Jessica Clabo

Edith Clark  
Betty Clifford  
Sundee Cline  
Maggie Clute  
Gordon Coates  
Hazel Coates  
Taylor Cole  
Laurel Coleman  
Makara Contrades  
Kathy Cooper  
George Crabb  
Laura Crabb  
Norma Craig  
Dan Crnkovich  
Andy Cullison  
Kahealani Cummings  
Maria Vitoria Da Matta  
Marianne Daniels  
Connor Darnbrough  
Shirley Daughterman  
Connor Deacon  
Susan Deans  
Eva DeColigny  
Triston Dedevala  
Susan Dehns  
Jerry Delgado  
Debbie Devine  
John Devine  
Diane Dickhut  
Lyman Diego  
Pam Dohrman  
Dale Dorman  
Maureen Dorman  
David Dow  
Julie Dow  
Dianne Drought  
Ruby Duby  
Deborah Duda  
Denise Duenas  
John Dumas  
Lori Dunham

Linda Dupley-McLellan  
Cindy Dupree-Thompson  
Doug Duvachelle  
Polly Edwards  
Jo Elliot  
Debra Ellis  
Suzanne Ellis  
Ana Estevez  
Candice Ethridge  
Patricia Fallbeck  
Denise Farwell  
Ken Fasig  
Harriett Fenerty  
David Fenske  
Dixie Fenske  
Maegan Fernandez  
Tina Ferrera  
Candy Finney  
Patrice Firth  
Sharon Fitzgerald  
Heather Flood  
Sheila Fode  
Judith Foley  
Missy Foley  
Pat Foster  
Megan Fox  
Andrew Foy  
Carla Freeman  
Susan Fridley  
Becky Fries  
Naomi Frisch  
Margie Funk  
Eman Gabour  
Reg Gage  
Sandy Gage  
Francesca Galliano  
Justin Ganam  
Misty Gardener  
Anderson Garner  
Adrienne Garska  
Susie Gates



Lynn Geiger  
Lois George  
Barney Gerber  
Amy Gibbs  
Amy Gibbs  
Jann Gibbs  
Lock Gibbs  
Alicia Gilbert  
Bill Gilbert  
Cynthia Gilbert  
Sandi Glandon  
Rick Golba  
Jane Goldsmith  
Kawika Goodale  
Meghan Goodale  
Marissa Gordon  
Ed Grattan  
Melissa Gregory  
Donna Grey  
Emery Griffin-Noyes  
Dale Grooms  
Jim Grueber  
John Grunwald  
Autumn Haag  
Kathy Hadwin  
Carol Hamamura  
Abegail Hammun  
Daughter Handke  
Megan Handke  
Linda Hansford  
Linda Hansford  
Diane Hartman  
Lois Hartman  
Jannin Hashizume  
Timoteo Haulen  
Nancy Hawkins  
Susan Hawkins  
Frank Hay  
Judy Hayes  
Elaine Healy  
Sheila Heathcote

Yeneidys Hernandez  
Margery Hexton  
Anissa Hexton  
Jared Hiniker  
Debbie Hoffnagel  
Edna Holdeman  
Keith Holdeman  
Suzi Holling  
Tom Holling  
Louise Hoops  
Sara Hopps  
Paul Horner  
Nina Houghton  
Dave Hubbard  
Kelly Huff  
Karen Huntsberger  
Chris Hurd  
Katheleen Hurd  
Greg Iten  
Debra Jackson  
Steve Jackson  
Teresa Jackson  
Verna James  
Eve Jasper  
Justine Jasper  
Linda Jasper  
Mick Jasper  
Howard Jennings  
Laura Jennings  
Ken Johnson  
Loren Johnson  
Russ Josephson  
Marisa Kagan  
Rogerlyn Kanealii  
Makana Kaneko  
Stella Kaneko  
Christopher Kaplanis  
Freddie Kaufman  
Rose Kau  
Kimo Keawe  
Martha Kent

Sheila Kent  
Baba Khalsa  
Ian Kidd  
Ian Kidd  
Nancy Kidd  
Nancy Kidd  
Angela Kim  
Isabel Kimball  
Andrew King  
Devorah King  
Monica King  
Terry Kirk  
Maggie Knapp  
Loren Kohnfelder  
Keith Koplan  
Merle Koplan  
Kirstin Krader  
Maleke Kudulana  
Mikiala Kudulana  
Savitri Kumaran  
Judy Lacey  
Eleanor Lahn  
Bill Laidlaw  
Lucia Laidlaw  
Stan Lake  
Joan Langan  
Sally Lange  
Ikaika Lanning  
Lynda LaRocca  
Stephanie Laverick  
Gary Ledesma  
David Lee  
Michelle Lemay  
Ron Lemay  
John Lemes  
David Leopold  
Jeremy Lester  
April Lewis  
April Lewis  
Dot Lewis  
Megan Liddell

Eylse Linack  
Karmanu Lind  
Eliza Linser  
Lora Livingston  
Elise Lockton  
Bob Long  
Gertrude Longston  
John Longston  
Adriana Loomis  
Ginette Lorence  
Victoria Love  
Alan Lubanes  
Barbara Lubanes  
Sondra Lund  
Justin Lyon  
JoAnne Machin  
Arlene MacPhail  
Kathi Maddox  
Tracy Magellan  
Rebekah Magers  
Estelita Maglinong  
Elizabeth Mahaffey  
Kenne Mahoney  
Liana Maka  
Victoria Mannisto  
Katie Maroney  
Nellie Marshall Torres  
Jon Masaki  
Vanessa Massoud  
Uncle Masu  
Grimmsley Matkov  
Susan Matsunga  
Kevin Matteson  
Aileen Mawae  
Francis Maximo  
Kathy Mayer  
Moira McBride  
Connor McCarty  
Garret McCarty  
Kathi McCarty  
Walt McCoy

KrisEmily McCrory  
Marisa McDaniel  
Mary McElligott  
Bob McGinty  
Margaret McGinty  
Bill McIntyre  
Jim McLellan  
Linda McLellan  
Pamela McMillen  
Richard McSwain  
Julie Meher  
Mary Kae Meloleck  
Nancy Merrill  
Dianna Meyer  
Ira Meyer  
Rayme Meyer  
Emily Mielke  
Emily Mielke  
Dave Miller  
Mayumi Minta  
William Mitchell  
Anne Miyamoto  
Edie Moe  
Fernandez Moegan  
Surina Mohr  
Teddy Moline  
Dawn Mones  
Roberto Montoya  
Suzanne Morris  
Deanna Moss  
Albert Munoz  
Tom Myers  
A.P. Nagie  
Kalika Nakooka  
Margaret Nee  
Karen Newton  
Virgil Newton  
Tim Nicholson  
Shivani Nneka  
Maryann Nordwall  
Court Norris  
Thea Oberlander  
Shanna O'Brien  
Jaime Odabachian  
Noreen Ohai-Daniels  
Patricia Olsson  
Linda O'Neil  
Paige O'Neil  
Steven O'Neil  
Noelani Ornellas  
Jake Ozaki  
Joyce Packard  
Kaitlyn Paiton  
Kaitlyn Paiton  
John Palenchar  
Joni Patterson  
Jan Peace  
Jill Penman  
Helen Percival  
Amy Peterson  
Marie Petro  
Anneke Pickering  
John Pickering

Lori Pittsley  
Ana Plasencia  
Caroline Plaza  
David Pratt  
Ilka Priest  
Savoy Pritchik  
Sharyn Privett  
Tom Privett  
Emmy Purainer  
Val Quayle  
Mark Query  
Alex Quintana  
Matt Ramirez  
Nikki Ramos  
Ariel Ramseth  
Aurora Ramseth  
Margaret Rangel  
Bill Rapanos  
Marilyn Rapanos  
Chris Rawls  
Edna Ray  
Melinda Rayne  
Ernie Reasoner  
Barbara Recchia  
Rosemary Rector  
Adair Reeves  
Lisa Remeny  
Yvonne Revitt  
Billie Richardson  
Bruce Richardson  
Kathy Richardson  
Mindy Richardson  
Tesla Rider  
Novelia Rivera  
Sally Rizzo  
Seth Roabe  
Jan Roberta  
Nancy Roberts  
Elizabeth Robinson  
Nancy Roblin  
Richard Roblin  
Jill Rockenstein  
John Rockenstein  
Morgan Rockenstein  
Nancy Rolan  
Megan Roland  
Chelsea Rollins  
Maile Rollins  
Mary Rose  
Diane Rosenberg  
Roger Rosenberger  
Ruth Rosenblatt  
Dale Rosenfeld  
Kim Rowley  
Jaya Ruiz-Acantilado  
Toni Saul  
Selma Sauve  
Karen Schlather  
Paul Schlather  
Gretchen Schmidt  
Jane Schmitt  
Mica Schoedre  
Larry Schokman

Colleen Schokman  
Eleanore Seeley  
Kiana Seigel  
Cary Self  
Emma Lou Sharrar  
Shale Shore  
Gary Shores  
Peter Siegel  
Sima Siegel  
Ed Sills  
Alan Silva  
Monica Silva  
John Skinner  
Cynthia Smith  
Florence Smith  
Keith Smith  
Richard Smith  
Lauren Snider  
Louise Snider  
Betty Snyder  
Kailee Soares  
Lava Soma  
Phyllis Sommers  
Tee Sorrentino  
Mitch Sowl  
Peggy Sowl  
Joan Spector  
Julie Spielman  
Carina Squire  
Genoa Starrs  
Josephine Steciuk  
Chris Steen  
Linda Steen  
Cory Steinmetz  
Pat Sterrett  
Tracy Sterrett  
Jean Stewart  
Marianne Swan  
Rob Swift  
Sara Switzer  
Renee Takahashi  
Suzuki Takayuki  
Cindy Taylor  
Josiah Taylor  
Lynn Taylor  
Christy Taylor-Parsil  
Patrick Thesken  
Gina Thomas  
Kate Thome  
Carol Thompson  
Ken Thompson  
Robert Thompson  
Stephanie Thorman  
Bonita Thornsby  
Keane Tibon  
Tom Timmons  
Cathy Togioka  
Ashly Trask  
Randy Umetsu  
Paz Valdez  
Scott Van De Verg  
Amy Van Horn  
Gaetano Vasta

Ron Venneman  
Titske Versteeg  
Cathy Volmet  
Bourgi Von trapp  
Seana Walsh  
Jackie Wang  
Pamela Warner  
Claudia Warszawski  
Dave Waterbury  
Ruth Waterbury  
Carol Watson  
Grace Watson  
Joanne Watson  
Joanne Watson  
Keoni Watson  
Sue Webert  
Linda Westgate  
Mark Westgate  
Zara Wetzel  
Zena Wetzel  
Frankie White  
Theresa Wiederoder  
Bill Wilcox  
Donna Wilcox  
Gary Williams  
Patricia Williams  
Josh Wittersheim  
Denese Wojcik  
Canyon Wolkis  
Krista Wolkis  
Marilyn Woodger  
Diane Worthington  
Lori Wright  
Lori Wright  
John Wrovkiewicz  
Sara Wrovkiewicz  
Ed Yamada  
Georgene Yamada  
Rachel Yamaguchi  
Phyllis Yount  
Barbara Zins  
Mike Zins  
Barbara Zuuring  
Hans Zuuring  
Apple, Inc. Volunteers  
Cornell Alumni Group  
Eleele Schools  
Horticulture Volunteers  
Kahanu Volunteers  
Kalaheo Schools  
Kampong Volunteers  
Kauai Conservation Alliance  
Kauai Drug Court  
Kauai Southshore  
Volunteers  
Limahuli Schools  
Limahuli Volunteer  
Malama Kauai  
Pacific Missile Range Facility  
Waipa Foundation



# How you can make a difference...

Everyone can make a difference to help tropical plant conservation, research, horticulture and education at the National Tropical Botanical Garden.

- \* A gift to the Tropical Garden Fund provides essential support for all of the Garden's programs in horticulture, education, and tropical plant research and conservation. To make a contribution or for more information, please visit our website at [ntbg.org/donate](http://ntbg.org/donate) or contact Development at 808-332-7324 ext. 211.
- \* Join the Council of Fellows by making a tax-deductible gift of \$1,500 or more. In addition to Member benefits, Fellows receive invitations to exclusive events and travel opportunities. For more information, please call Suzy May, Assistant Director of Philanthropy at 808-332-7324 ext. 238, or [smay@ntbg.org](mailto:smay@ntbg.org)
- \* Become a Member and enjoy benefits that include free admission for self-guided tours, invitations to events, lectures, and workshops, discounts at Garden shops and our membership newsletter, *The Bulletin*. Please contact Tanya Ramseth, Membership Manager, at 808-332-7324, ext. 241 or [members@ntbg.org](mailto:members@ntbg.org)
- \* Include the Garden in your estate plans and become a member of the NTBG Legacy Society. Bequests and other planned gifts support the Garden's endowment and provide critical funding for the Garden's future. Members of the NTBG Legacy Society receive invitations to events. More information can be found at [ntbggiving.org](http://ntbggiving.org) or please contact Heidi Whitman, Director of Philanthropy at 808-320-0748 or [hwhitman@ntbg.org](mailto:hwhitman@ntbg.org)
- \* Double or triple your support with a Corporate Matching Gift. Many businesses provide matching funds to amplify your support. Please contact your company's human resources department or call us. We can help you determine if matching funds are available.
- \* Become a Business Partner and support tropical plant conservation. Corporate environmental responsibility is more important than ever to attract the best employees and customers. We would love to talk to you about how you might partner with us. Become a Corporate Partner or Member, make a donation, donate a product or service, sponsor an event, arrange an employee volunteer day or provide a grant. For more information, please contact Heidi Whitman, Director of Philanthropy at 808-320-0748 or [hwhitman@ntbg.org](mailto:hwhitman@ntbg.org)
- \* Become a Volunteer by contacting us at [volunteers@ntbg.org](mailto:volunteers@ntbg.org) We will match your interests, abilities, and availability with the Garden's current volunteer needs. By becoming a volunteer you will be making a substantial contribution to the preservation and knowledge of tropical plants and ecosystems.

**The Mission** of the National Tropical Botanical Garden is to enrich life through discovery, scientific research, conservation, and education by perpetuating the survival of plants, ecosystems, and cultural knowledge of tropical regions.

**National Tropical Botanical Garden**

3530 Papalina Rd. | Kalaheo, HI 96741

**[www.ntbg.org](http://www.ntbg.org)**

NTBG is the only botanical garden chartered by the United States Congress. Established in 1964, the Garden is dedicated to the preservation and survival of tropical plants, emphasizing rare and endangered species. NTBG is a 501 (c) (3) nonprofit corporation. We are not operated by the federal government and rely on the much-appreciated support of members and donors like you to carry out our mission.



[www.facebook.com/saveplants](https://www.facebook.com/saveplants)



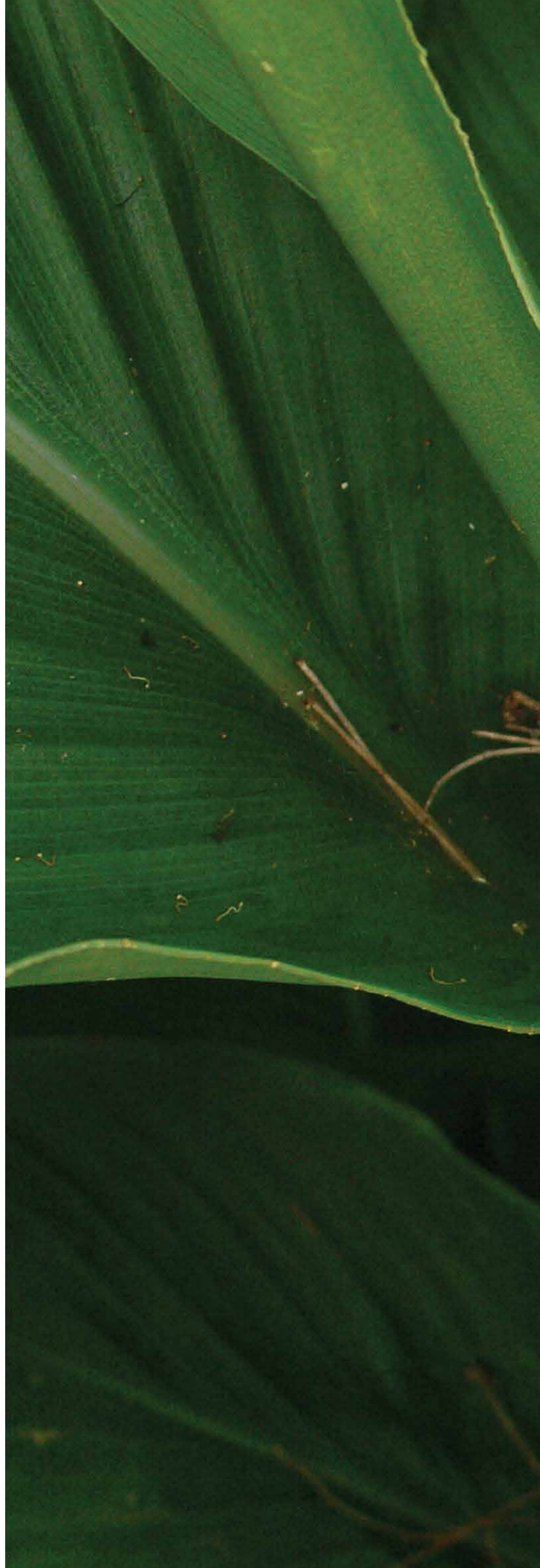
[twitter.com/ntbg](https://twitter.com/ntbg)



[www.youtube.com/ntbgsaveplants](https://www.youtube.com/ntbgsaveplants)



[instagram.com/ntbg#](https://instagram.com/ntbg#)







## National Tropical Botanical Garden

3530 Papalina Road  
Kalāheo, Hawai'i 96741 USA



BOTANICAL COORDINATOR MERLIN  
EDMONDS COLLECTS SEEDS FROM EURYA  
SANDWICENSIS IN THE UPPER LIMAHULI  
PRESERVE. PHOTO BY SEANA WALSH