

Atriplex morrisii R.H.Anderson CHENOPODIACEAE

Significance: national 3K

Life Form: Annual or short-lived perennial herb.

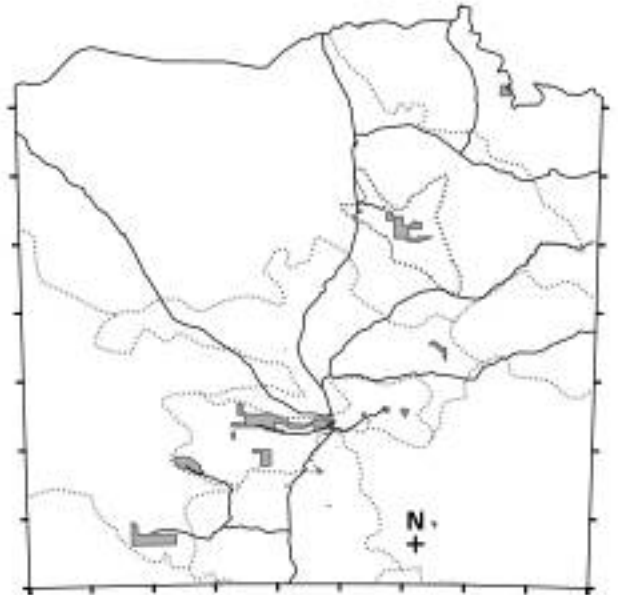
Habitat: The habitat preference of this species is poorly known. It probably has a fidelity for clay-rich soils. Usually evident following substantial cool season rains.

Distribution: Principally the Eyre basin. In the study area, known from a single record from Andado pastoral lease. This record represents the northern limit of this species' known range.

Reservation: none

Distribution Outside Study Area: SA, Qld, NSW

Distribution in Study Area (NT Herbarium records by bioregion):
SSD(1) SUM(1)



Atriplex muelleri Benth. CHENOPODIACEAE

[Annual Saltbush, Muellers Saltbush]

Significance: Northern Territory 3r

Life Form: Low annual herb.

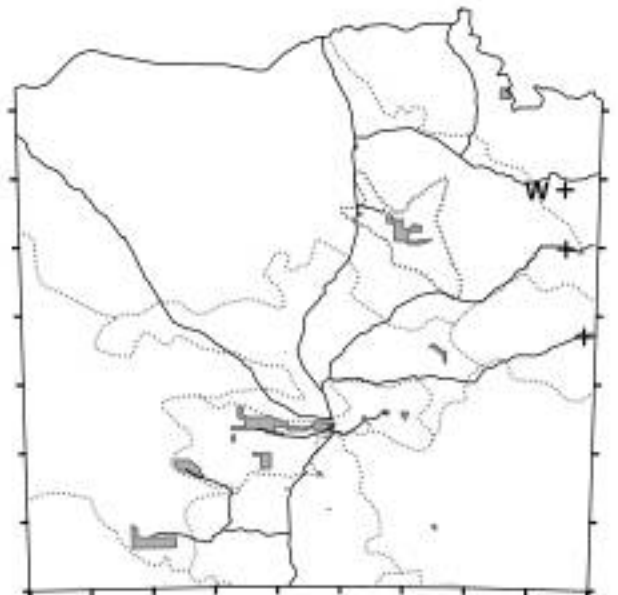
Habitat: Occurs in Mitchell Grass or Gidgee communities, particularly in areas receiving additional water from local drainage patterns (such as run-on areas). Soils are typically pale or grey clays.

Distribution: Widely distributed in inland areas of northern NSW, north east SA and subtropical Qld. Within the study area this species occurs on the Barkly Tablelands and the alluvial plains of the Channel Country bioregion. The western limit of this species' known range occurs within the study area.

Reservation: none

Distribution Outside Study Area: SA, Qld, NSW

Distribution in Study Area (NT Herbarium records by bioregion):
CHC(1) MGD(2) SUM(3)



Atriplex nummularia Lindl. **subsp. nummularia**

CHENOPODIACEAE

[Old Man Saltbush]

Significance: bioregional MAC (northern range limit)

Distribution: This taxon reaches the northerly limits of its known range in the study area.

Reservation: A.S.Telegraph-Stn.(b), NDhala(b), Rainbow-Valley, West-Macs

Distribution Outside Study Area: SA, Qld, NSW, Vic

Distribution in Study Area (NT Herbarium records by bioregion):
FIN(7) MAC(24) SSD(4) STP(2) SUM(37)

