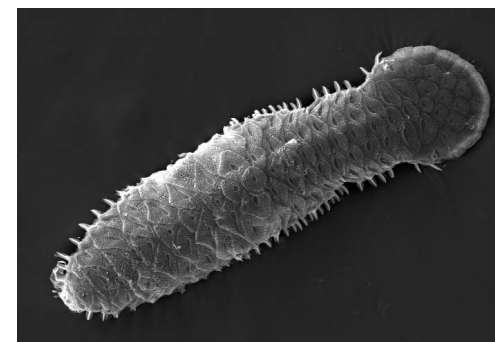


Laumer et al. 2015

phylum GASTROTRICHA

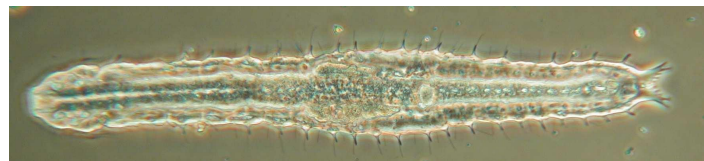
Maria Balsamo (FADA + FaEu)
University of Urbino (Italy)

M. Antonio Todaro (WoRMS)
University of Modena-Reggio E. (Italy)



Order MACRODASYIDA

worm-like, 230 μm - 3 mm,
 numerous adhesive tubes,
 inverted Y-shaped pharyngeal lumen, 2 pharyngeal pores
 Hermaphrodite. Marine, 2 freshwater species
 Interstitial or epibenthic



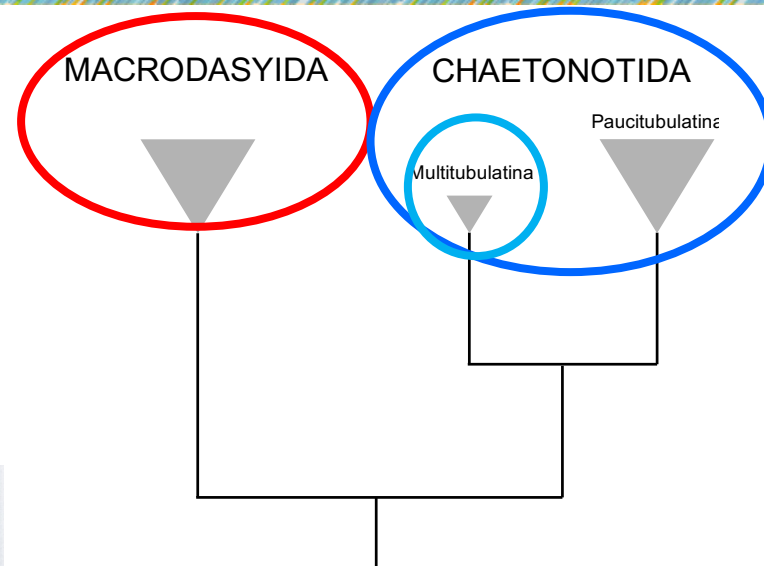
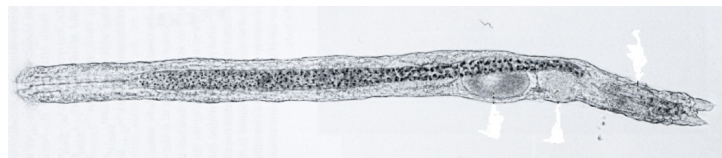
Order CHAETONOTIDA

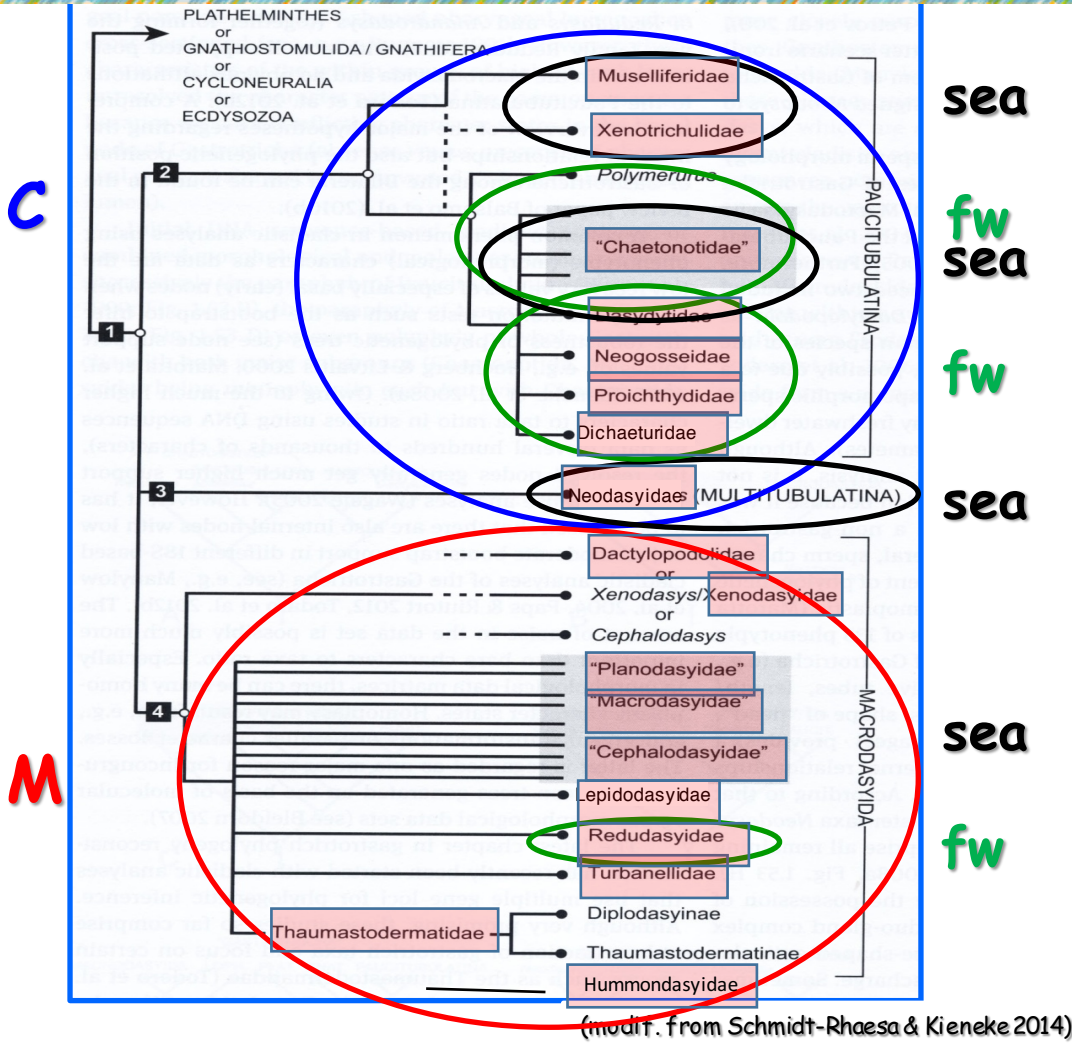
Multitubulatina

1 order, intermediate between M and C. Marine

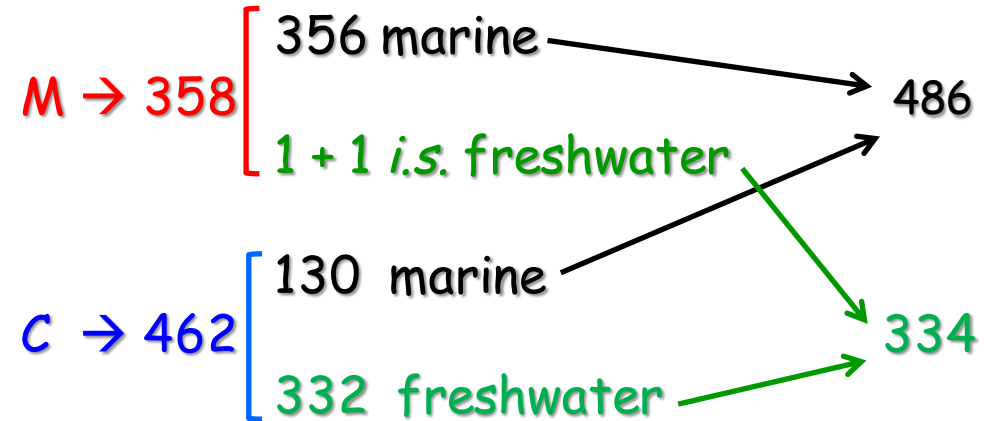
Paucitubulatina

tenpin-like, 80-770 μm in length, 2 (rarely 4) adhesive caudal tubes
 (*furca*), Y-shaped pharyngeal lumen, no pharyngeal pores
 Generally obligate parthenogenic. Marine, mostly freshwater
 Epibenthic, periphytic, planktonic or interstitial





Total n° species 820



| | | | | |
|----------|--------|---|--------|--|
| M | 10 fam | <ul style="list-style-type: none"> 9 m 1 m+f | 35 gen | <ul style="list-style-type: none"> 34 m 1 f + 1 i.s. |
| C | 8 fam | <ul style="list-style-type: none"> 3 m 1 m+f 4 f | 31 gen | <ul style="list-style-type: none"> 8 m 5 m+f 18 f |

Checklist

- BALSAMO M., TONGIORGI P., 1995 - Gastrotricha. In: Minelli A., Ruffo S. & La Posta S. (ed.), Checklist delle specie animali della fauna italiana, 7, Ed. Calderini, Bologna.
- TODARO M. A., HUMMON W. D., BALSAMO M., FREGNI E., TONGIORGI P. 2000 - Inventario dei Gastrotrichi marini italiani: una checklist annotata. Atti Soc. Tosc. Sc. Nat., 107: 75-137.
- TODARO M.A., BALSAMO M., TONGIORGI P. 2008. Gastrotricha. In Relini, G. (Ed) Checklist della flora e della fauna dei mari italiani. Biol. Mar. Med. 15: 159-168.
- BALSAMO M., d'HONDT J.L., KISIELEWSKI J., PIERBONIL. 2008. Global diversity of gastrotrichs (Gastrotricha) in fresh waters. In: Balian E.V. et al.(Eds.), Freshwater Animal Diversity Assessment. Hydrobiologia 595: 85-91.
- HUMMON W. (2010) Global database for marine Gastrotricha. <http://132.235.243.28>
- HUMMON W., TODARO MA (2010) Analytic taxonomy and notes on marine, brackishwater and estuarine Gastrotricha. Zootaxa 2392: 1-32.

Faunas / Identification Keys : Balsamo 1986, 2014; Schwank 1990; Kisielewski 1991,1998 ; Kanneby 2012,2013 (Freshwater G.); Lee & Chang 2000; Todaro MA 2002,2012; Todaro & Hummon 2008, Todaro et al. 2009 (Marine G.)

Data sources - Status in FADA, WoRMS (no RAMS)

FADA : faunistics, geographic distribution of global freshwater species (updated 2014, unpublished)

Fauna Europaea : taxonomy, faunistics, geographic distribution of European freshwater species (updated 2011)

WoRMS : faunistics, geographic distribution of marine and freshwater species

Expectations for the workshop

Issues that could be solved during the meeting

Check and comparison between FADA and WoRMS databases
Methods of data entry in the two directories

Expected perspectives

- Update of the checklist and distribution of freshwater and marine species
- Possible extension of taxonomic information from European freshwater species (FaEu database) to global freshwater species (FADA)