

# THE Soundstream

**B&W LOUDSPEAKERS NZ MONTHLY NEWSLETTER**



**“THE BEST LOUDSPEAKER ISN'T THE ONE THAT GIVES THE MOST, IT'S THE ONE THAT LOSES THE LEAST” - JOHN BOWERS**

## FROM THE TEAM AT B&W LOUDSPEAKERS

As the days grow longer and the temperatures begin to rise, we're excited to announce that spring is just around the corner! With the arrival of this rejuvenating season, we're looking forward to helping you elevate your audio experiences in more ways than one.

While nature comes to life outdoors, so can your music. Consider exploring our range of outdoor speakers, designed to bring your favorite tunes to your outdoor spaces, whether it's your garden, patio, or poolside. As you embrace the fresh air and the blossoming surroundings, our speakers can provide the perfect soundtrack to your spring gatherings and relaxation.

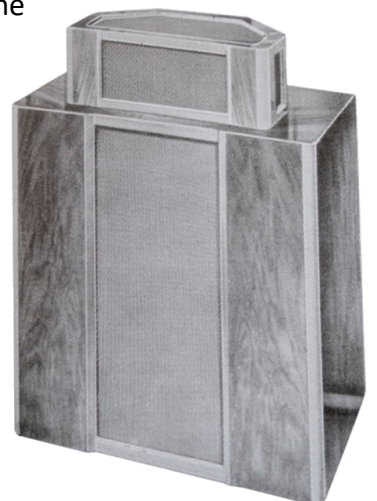
At B&W Loudspeakers, we're all about enhancing your connection with sound, and spring's arrival offers a wonderful opportunity to do just that. Stay tuned for updates, special offers, and expert tips to make the most of this vibrant season both indoors and outdoors.

Best regards,

The B&W Loudspeakers Team

## DID YOU KNOW?

In 1945 Wharfedale's founder, Gilbert Briggs, developed and launched the first ever two-way loudspeaker that was small enough to fit in a family home. Two-way and multi-component loudspeaker systems had been attempted in the 1930s; they were however solely the reserve of cinemas and theatres due to their immense size and cost. It's fair to say then, that Wharfedale practically invented the modern domestic loudspeaker as we know it today! The device would look strange by modern standards, with a 10" tweeter and a crossover that took two grown men to lift... but it set the standard for the entire industry!



# THE Soundstream

B&W LOUDSPEAKERS NZ MONTHLY NEWSLETTER

## THE NEW B&W 600 SERIES IS HERE!

This isn't just another loudspeaker range. The new Bowers & Wilkins 600 Series 3 is designed for every music lover; it's the attainable and affordable way to experience the joys of True Sound. These four new loudspeaker models feature technologies used in the revered, reference standard 800 Series Diamond range found in Abbey Road Studios and provide anyone and everyone who loves music more from their listening. 600 Series: for the love of music.

### WHY 600 SERIES?

#### INSPIRED BY ENGINEERING EXCELLENCE

600 Series uses a wealth of state-of-the-art technologies derived from our award-winning 800 Series Diamond range to provide a best-in-class audio experience.

#### BUILT FROM HERITAGE

The new 600 Series is the latest iteration of one of our longest-running, most highly regarded and most successful loudspeaker ranges.

#### A SPEAKER TO SOLVE EVERY NEED

Available in a compact bookshelf, powerful stand-mount, room-filling floorstander and a crystal-clear centre channel. The 600 Series 3 has a model to cater to every need for both stereo and home theatre use.

#### FOR THE LOVE OF MUSIC

600 Series is bought by music lovers, film fans, dedicated audiophiles, youthful vinyl devotees and even older buyers on a budget. In short, anyone and everyone who loves music.

## NEW TECHNOLOGY

### Titanium Dome tweeter

The new 600 Series introduces our all-new Titanium Dome tweeter, which combines exceptional resolution and insight with smooth, refined high-frequency reproduction. The result? An accurate and immersive insight into your favourite music



### Continuum cone

Thanks to its composite construction, the Continuum cone avoids the abrupt transitions in behaviour that can impair the performance of a traditional drive unit. The result is a more open, neutral performance that delivers voices and instruments with precision and transparency.



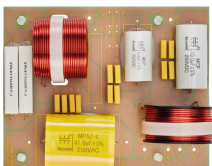
### Upgraded speaker terminals

Derived from those recently introduced in our 700 Series range, the speaker terminals on the new 600 Series feature an improved layout and a cleaner signal path between your amplifier and your loudspeakers.



### Upgraded and optimised crossovers

The new 600 Series benefits from optimised crossover designs, featuring carefully selected components that provide greater insight into your music.



[CLICK HERE FOR MORE INFO!](#)



# THE Soundstream

**B&W LOUDSPEAKERS NZ MONTHLY NEWSLETTER**

## PRODUCT SPOTLIGHT



**700 SERIES: STUDIO SOUND COMES HOME**

## BOWERS & WILKINS 703 S3

The Expert Imaging and Sound Association (EISA), a community of 60 technology magazines, websites and social media commentators from 29 countries, has awarded the new Bowers & Wilkins 703-S3 speakers with the highly coveted "Best Product" award. This is arguably the highest possible honour to be bestowed across the entire Hi-Fi industry!

### Read the official EISA award citation:

*"The impressive bass, treble detail and cohesive soundstage attest to the engineering skill that's gone into developing the third generation of Bowers & Wilkins' 700 Series, much of it trickled down from the company's top-tier 800 D4 models. Nowhere is this more the case than with the 703 S3, a slender tower that gains a tweeter-on-top for the first time, allied to a pair of 165mm Aerofoil bass drivers and a 150mm Continuum cone midrange. This floorstander delivers an engaging and emotional listen and makes B&W's premium performance accessible to more music lovers. The new Mocha colourway, next to classic white or black options, is also stunning."*

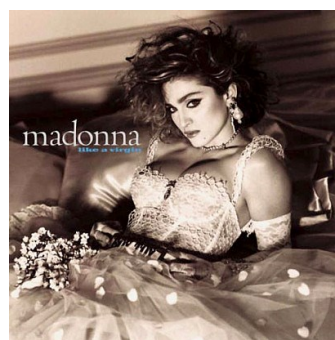
**AVAILABLE IN NEW ZEALAND NOW!**

**\$12,999 RRP (PER PAIR)**

[CLICK HERE FOR MORE INFO!](#)

## TUNES THROUGH TIME: SEPTEMBER EDITION

On September 14th in 1984, music history was forever changed by the birth of MTV's annual event, the "MTV Video Music Awards" (VMAs)! This groundbreaking awards show debuted at New York City's Radio City Music Hall, setting the stage for countless iconic moments. The very first Video Music Awards featured memorable performances by Madonna, David Bowie, and The Cars, with Madonna's performance of "Like a Virgin" in a wedding dress becoming an enduring image. The VMAs not only celebrated the artistry of music videos but also transformed how music and visual storytelling are intertwined in our culture.



# THE Soundstream

B&W LOUDSPEAKERS NZ MONTHLY NEWSLETTER



I have a Polish friend who is a Sound Guy...



...And he has a Czech one too!

## SEPTEMBER GIVEAWAY!

WIN  
ME!



M-DAC Nano  
Worth \$399!

WHAT HI-FI?



### SEND US A SNAP OF YOUR SETUP!

Send a photo of your hi-fi setup to us at [jackson@bwspeakers.co.nz](mailto:jackson@bwspeakers.co.nz) before the end of September to go into the draw to win an Audio M-DAC Nano wireless DAC and Headphone Amp worth \$399! Our favourite submission will be featured in next months edition of The Soundstream!

## HI-FI TIP OF THE MONTH: POWER CONDITIONING

Power conditioners are an often-overlooked yet essential component in any true high-fidelity audio setup. These devices play a significant role in ensuring a clean and stable power supply to your audio equipment, resulting in improved sound quality and system longevity.

### What Is a Power Conditioner?

A power conditioner is designed to filter and regulate the electrical power coming from the wall outlet before it reaches your audio components. It helps eliminate common issues like voltage fluctuations, electromagnetic interference, and radio frequency interference, which can degrade the audio signal and lead to unwanted noise in your sound system.

### Benefits of Using a Power Conditioner:

**Enhanced Sound Quality:** By delivering consistent and clean power, a power conditioner minimizes background noise, allowing your audio components to perform at their best and reveal finer details in your music.

**Protection:** Power conditioners often come with built-in surge protection, safeguarding your valuable audio equipment from power surges and electrical spikes.

**Extended Equipment Life:** The stable power supply provided by a power conditioner can prolong the lifespan of your components by reducing stress on their internal circuits.

**Consistency:** Power conditioners ensure that your audio system receives a consistent power supply, regardless of fluctuations in the electrical grid.

Incorporating a power conditioner into your setup can yield noticeable improvements in sound quality and overall system performance. As you fine-tune your audio environment, don't underestimate the impact of clean, stable power on your listening experience. These little gadgets are relatively inexpensive too, so it's a great way to up your audio game without breaking the bank!

[CLICK HERE FOR MORE INFO!](#)



# THE Soundstream

**B&W LOUDSPEAKERS NZ MONTHLY NEWSLETTER**

## WHAT'S NEW?

### NEW ROTEL MKII MODELS!

Rotel, the award-winning manufacturer of high-performance audio components, has announced the launch of three new and improved models: the A10 MKII Integrated Amplifier, the A11 MKII Integrated Amplifier, and the CD11 MKII CD Player. All three models benefit from numerous upgrades to critical components and circuit topology to add extra resolution and detail while maintaining their critical price position!



#### **A10 MKII**

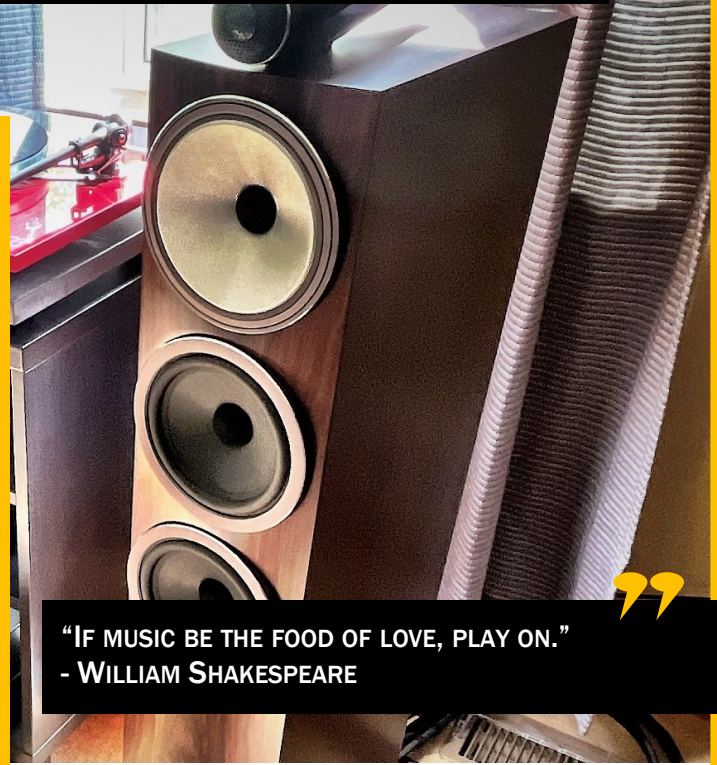
The A10 MKII is a new addition to Rotel's lineup of affordable integrated amplifiers. It features a Class AB amplifier with 50 watts per channel, an in-house manufactured toroidal transformer, and a high-quality DAC. The A10MKII boasts more than 67 component upgrades, specifically in the power and amplifier gain stage. These enhancements are said to contribute to superior resolution, enhanced detail, plus more refined bass extension and control.

#### **A11 MKII**

The A11 MKII is an upgrade to the hugely successful A11 Tribute model. It features a Texas Instruments 32-bit/384kHz DAC, a high current Class AB amplifier with 50 watts per channel, and over 22 component upgrades in the digital circuits. The A11 MKII also includes a motorized volume control, source selection, and bass, treble, and balance controls.

#### **CD11 MKII**

The CD11 MKII CD Player replaces the existing CD11 Tribute model and includes over ten critical components upgrades in the digital circuits surrounding the Texas Instruments 32-bit / 384kHz DAC.

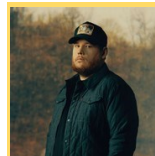


“IF MUSIC BE THE FOOD OF LOVE, PLAY ON.”  
- WILLIAM SHAKESPEARE

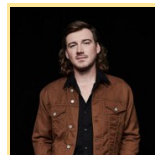
## CHART-TOPPERS UNLEASHED: TODAY'S HOTTEST MUSIC!



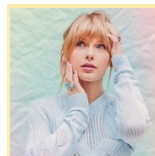
**RICH MEN NORTH OF RICHMOND**  
OLIVER ANTHONY MUSIC



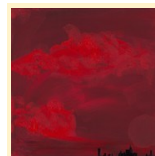
**FAST CAR**  
LUKE COMBS



**LAST NIGHT**  
MORGAN WALLEN



**CRUEL SUMMER**  
TAYLOR SWIFT



**PAINT THE TOWN RED**  
DOJA CAT



# THE Soundstream

**B&W LOUDSPEAKERS NZ MONTHLY NEWSLETTER**



**CHECK OUT OUR FACEBOOK PAGE!**

[WWW.FACEBOOK.COM/ONLINEHIFI.CO.NZ](http://WWW.FACEBOOK.COM/ONLINEHIFI.CO.NZ)

## CONTACT US TODAY!

For general enquiries give us a call on **0800 255 800** to chat with our friendly team of audio experts!

Or you can send us an email us at [info@bwspeakers.co.nz](mailto:info@bwspeakers.co.nz)

For spare parts or product service enquiries email Jackson at [customersupport@bwspeakers.co.nz](mailto:customersupport@bwspeakers.co.nz)

To view our product range you can visit our website: [www.onlinehifi.co.nz](http://www.onlinehifi.co.nz)

Come visit us at our showroom!  
[95 Orbell Street, Sydenham, Christchurch](#)  
- on the corner of Orbell and Disraeli St.

## HOT MODELS! BOWERS & WILKINS PX8



*"Anyone familiar with recent efforts from Bowers & Wilkins won't be surprised with what the Px8 deliver in sound quality, but they will still be impressed. There is a level of clarity and insight here that we haven't heard bettered at this level. Performance is a clear step ahead of talented but cheaper alternatives such as the aforementioned Sonys or the new Sennheiser Momentum 4 in pretty much every area. There is more precision and clarity than the Apple AirPods Max too." - What Hi-Fi?*

[CLICK HERE FOR MORE INFO!](#)



**\$1399<sub>RRP</sub>**

## BOWERS & WILKINS CI300 CEILING SERIES



*The perfect entry point into premium custom audio. Designed for exceptional value without compromising quality, these speakers seamlessly blend with your interior while delivering impressive sound. Enjoy immersive audio that fills your space, all while experiencing the renowned Bowers & Wilkins craftsmanship. Elevate your audio experience affordably with the B&W CI300 Series – where exceptional value meets uncompromising performance.*

[CLICK HERE FOR MORE INFO!](#)

**FROM JUST \$899<sub>RRP</sub>/PAIR**