

LEPIDOPTERA OF DRY ISLAND BUFFALO JUMP PROVINCIAL PARK, 1999-2011

Charles Durham Bird, 8 March 2012
Box 22, Erskine, AB, T0C 1G0
cdbird@xplornet.com

No major collections were made in the area in 2010 and 2011. The present report includes the results of the 4 July 2010 and 10 July 2011 Annual Butterfly Counts as well as a number of redeterminations. It also follows the up-to-date order and taxonomy of Pohl et al. (2010), rather than that of Hodges et al. (1983).

THE AREA

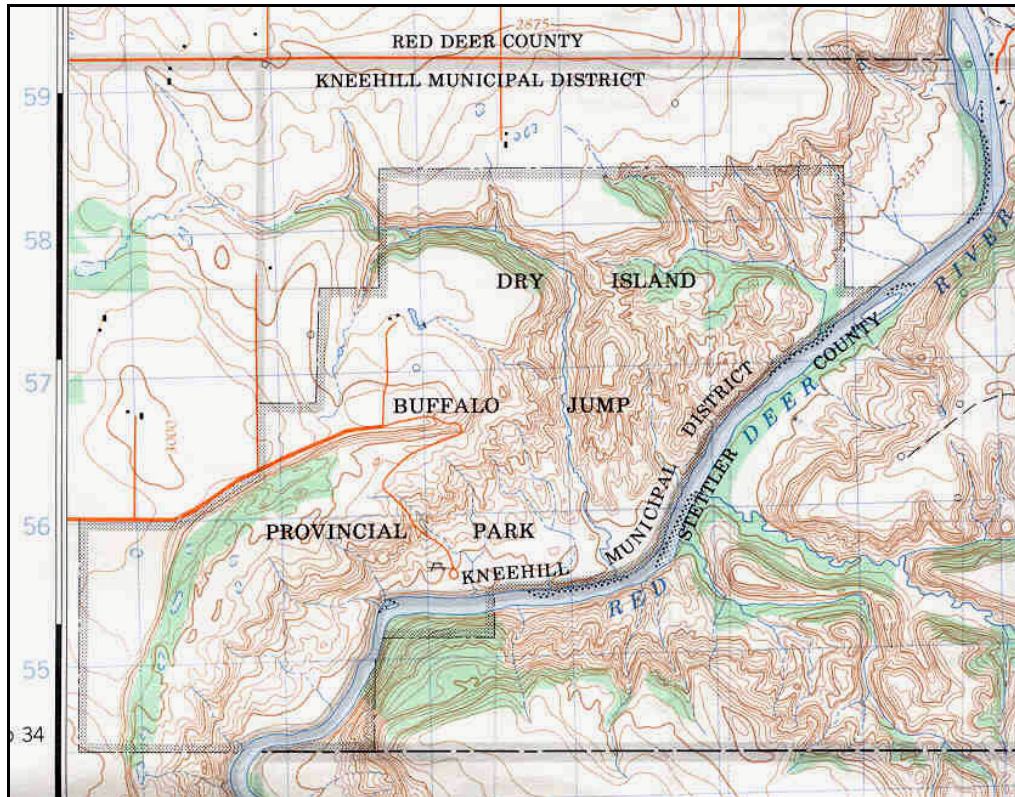


Dry Island Buffalo Jump Provincial Park looking east from the escarpment, July 8, 2001.

Dry Island Buffalo Jump Provincial Park, established in 1970, is located on the Red Deer River, 25 km northeast of Trochu. It is 15 km east of Highway 21. The area is so-named because of a flat-topped mesa, or “dry island” which rises some 200 metres above the river. On the west side of the Park, there is a precipitous cliff over which buffalo were stampeded by Indians. Ecologically, the Park is made up of badland terrain, grassy flats, shrub (saskatoon, chokecherry, silver willow, buckbrush) thickets, deciduous (aspen) woodland and riverine (balsam poplar) forest.

An ecological survey of the Park by Kondla & Smith (1972) came up with an impressive 148 species of birds, 25 of mammals, and 225 of flowering plants. Later studies by Wallis (1977), Nordstrom and Wilkinson (1980), Campbell (1983) and Lohr (1993) have added to these totals.

The present report incorporates all information in the earlier reports (Bird 2002-2008) as well as making a few corrections and adding new information based on studies carried out in 2008.



Dry Island Buffalo Jump Provincial Park

BACKGROUND

Provincial Parks and other areas where natural vegetation is protected are of great value as the flora and fauna present in them is typical of what was in Alberta before widespread agricultural activities replaced them with flora and fauna that was much reduced in numbers and made up of species that were associated with cultivated grains and hay crops. As a result, many of Alberta "rare and endangered" species are now found only in, or mainly in, such protected areas.

The present author, a member of the Alberta Lepidopterist's Guild, the purpose of which is to encourage study of Alberta's moths and butterflies, is retired and living in Erskine, Alberta. He has long been interested in the natural flora and fauna of the province. In the spring of 2000, he commenced an examination of the moths of south-central Alberta, the purpose of which was to document the species present in various natural areas. He has led annual Butterfly counts at Dry Island on 2 Jul 1999, 11 Jul 2000, 8 Jul 2001, 7 Jul 2002, 6 Jul 2003, 11 July 2004, 19 July 2005, 16 July 2006, 8 July 2007, 6 July 2008, 5 July 2009, 4 July 2010 and 10 July 2011.



Participants in the July 6, 2008 Butterfly Count

The Park was visited five times during 2001: June 8, June 20, July 8, August 8 and September 1. On the first two and the last two visits, ultraviolet light traps were run overnight in badland terrain. On the last two visits, moths were collected at a mercury vapor light and sheet set up in riverine forest. Research was carried out five times in the Park in 2002: June 4, June 27, July 7, August 21 and September 10. The coordinates that cover the studied sites are 51.93, 112.97. The results of studies made in earlier years are in Bird (2002-2008, 2003 and 2004). In 2003, light traps were set up in the same location on May 21 and July 12. On June 25, 2003, traps were set up in Section 26, a separate part of the Park, located about two miles south of the main Park area (51.86, 113/01) and mainly on the escarpment on the east side of the Red Deer River valley. The area was studied 7 times in 2004: May 30, June 19, July 11 and 18, August 15 and 28, and September 24. In 2005: the area was studied 5 times: April 24, June 21, July 10, August 2 and 28. In 2006 the area was studied 6 times: 16 May, 12, June, 9 and 16 July, and 6 and 27 August. In 2007 the area was studied 3 times: 30 May, and 4 and 8 July. From 2008 to 2011 the area was studied only on Butterfly Count Days. The Appendix gives details of each study day.



Looking ESE from the escarpment north of the “Dry Island”, June 19, 2004.

SPECIES RANKINGS

Due to a lack of sufficient information, rankings of the moths of Alberta have been difficult to make. For this reason, it is important that baseline studies, such as the present, be carried out. The provincial butterflies have, on the other hand, been ranked and it is of interest that *Icaricia shasta* and *I. acmon* have been found in the Park.

SPECIMEN DISPOSITION

All specimens collected by the writer presently reside in his collection but most will eventually go to the University of Alberta Strickland Museum (UASM), and some will be deposited in the Canadian National Collection (CNC) in Ottawa and the Northern Forest Research Centre (NFRC) in Edmonton. All specimens have been databased and the information on verified material can be viewed at <http://www.entomology.ualberta.ca/searching.php>.

CHECKLIST

Pohl et al (2010) have put together an up-to-date annotated list of the Lepidoptera of Alberta. They include 2367 species, many more than those mentioned by Bowman (1951). This list incorporates recent changes in taxonomy of all groups according to various literature sources, including those listed for the Noctuoidea by Lafontaine & Schmidt (2010). In previous reports, the order and terminology, were that of the “Check List of the Lepidoptera of America North of Mexico” (1983) edited by R.W. Hodges. The species order and taxonomy in this report is that of Pohl et al (2010) followed by that in Hodges (1983). Common names are mentioned in those cases where such names are known.

While most of the larger or macromoths are relatively well known, the same cannot be said for many of the smaller or micromoths. Identifications, especially of the latter, can be

difficult or are at present impossible, until such time as revisionary studies are made. Also, genitalic dissection and examination is necessary for positive identification in some groups. For these reasons, some of the determinations should be regarded as tentative. The scientific names of the species are followed by the day-month-year of the collection and the number of individuals mounted; an "SR" indicates a sight record.

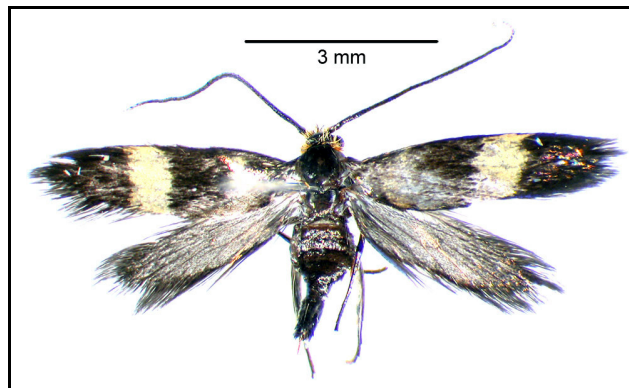
Kenneth Bowman's (1951) list of the Lepidoptera of Alberta presents all species known at that time and gives the distribution of each according to 21 Areas. His Areas 5, 8 and 10 essentially cover all of south-central Alberta, with the study area being in Area 5. Most of Bowman's records are from Area 10, which includes Edmonton, so most of the species found in the following list would be additions to his Area 5.

HEPIALIDAE – Ghost Moths and Swifts

5. *Gazoryctra novigannus* (B. & Benj.) (29. *Gazoryctra novigannus* (B. & Benj.)) – 1-IX-2001 1, 10-IX-2002 1, 28-VIII-2004 1, 24-IX-2004 1 and 28A-VIII-2005 1.
 8. *Sthenopsis purpurascens* (Pack.) (19. *Sthenopsis purpurascens* (Pack.)) (Large Ghost Moth) – 10-VII-2005 1.

ADELIDAE – Adelid Moths

Adelidae, Adelinae



Cauchas sp. (*Adela* sp.) – 12-VI-2006 1. Greg Pohl sent an image (see above) of this specimen (BIRD18821) to Dr. Ron Davis. Davis was unable to name it and it is possible that the specimen belongs to an undescribed species. Two species are known for Alberta, *cockerelli* and *simpliciella*. Greg says that is neither of them. The specimen is now at NFRC. The moth was collected during the day (diurnal) with a net as it was flying over *Juniperus communis* on a south-facing slope.

TINEIDAE – Clothes Moths and others

Tineidae, Tineinae

44. *Tinea irrepta* Braun (399. *Tinea irrepta* Braun) – 25B-VI-2003 3, 12A-VII-2003 1, 19-VI-2004 2, 18-VII-2004 1, 21-V-2005 2, 2A-VIII-2005 4 and 2B-VIII-2005 3.

51. *Monopis spilotella* (Teng.) (421. *Monopis spilotella* (Tengström)) – 6A-VIII-2006 1 and 4B-VII-2007 1.

ACROLOPHIDAE – Tube Moths

54. *Amydria effrentella* Clem. (334. *Amydria effrentella* Clem.) – 21-VIII-2002 1, 10-IX-2002 4, 18-VII-2004 1, 15-VIII-2004 1 and 27A-VIII-2006 1.

BUCCLATRICIDAE – Bucculatricid Moths

Bucculatrix sp. – 25-VI-2003 1. This is probably *Bucculatrix canadensisella* Cham.

GRACILLARIIDAE – Gracillariid Moths

Gracillariidae, Gracillariinae

Gracillariidae indet. - 30A-V-2007 1.

Caloptilia spp. – 8-VI-2001 1 and 20-VI-2001 4.

66. *Caloptilia alnivorella* (Cham.) (587. *Caloptilia alnivorella* (Cham.)) (Alder Leafminer) – 24-IX-2004 1 and 16B-V-2006 1.

67. *Caloptilia anthobaphes* (Meyr.) (589. *Caloptilia anthobaphes* (Meyr.)) – 19-VI-2004 1.

73. *Caloptilia invariabilis* (Braun) (609. *Caloptilia invariabilis* (Braun)) (Cherry Leaf-cone Caterpillar) – 16A-V-2006 1 and 16B-VI-2006 2. Originally determined as *Caloptilia betulivora* McD. The specimens are probably *C. invariabilis* (Pohl et al. 2010).

Not in Pohl et al. (Sp. nr. 595. *Caloptilia bimaculatella* (Ely)) – 8-VIII-2001 1.

76. *Caloptilia stigmatella* (F.) (639. *Caloptilia stigmatella* (F.)) – 8-VI-2001 1 and 6A-VIII-2006 1.

82. *Parornix conspicuella* (Dietz) (669. *Parornix conspicuella* (Dietz)) – 19-VI-2004 3, 21-VI-2005 2, 12C-V-2006 1 and 16A-V-2006 (1), 30C-V-2007 2 and 4B-VII-2007 1.

83. *Acrocercops astericola* (F. & B.) (692. *Acrocercops astericola* (F. & B.)) – 21-VI-2005 1 and 4B-VII-2007 2.

Gracillariidae, Lithocolletinae

Phyllonorycter sp. – 21-VI-2005 1. Possibly 85. *Phyllonorycter apparella* (H.-S.).

ARGYRESTHIIDAE – Argyresthiid Moths

Yponomeutidae, Argyresthiinae

Argyresthia sp. – 19-VI-2004 1.

96. *Argyresthia conjugella* Zell. (2449. *Argyresthia conjugella* Zell.) (Apple Fruit Moth) – 20-VI-2001 1, 18-VII-2004 2, 6A-VIII-2006 1 and 6B-VIII-2006 1.

YPSOLOPHIDAE – Falcate-winged Moths

Ypsolophidae, Ypsolophinae

104. *Ypsolopha canariella* (Wlsm.) (2371. *Ypsolopha canariella* (Wlsm.)) (Canary Ypsolopha Moth) – 1-IX-2001 1, 21-VIII-2002 1, 10-IX-2002 1, 15-VIII-2004 1, 18-VIII-2004 2, 2B-VIII-2005 1 and 28A-VIII-2005 1.
106. *Ypsolopha dentiferella* (Wlsm.) (2376. *Ypsolopha dentiferella* (Wlsm.)) – 15-VIII-2004 1, 28A-VIII-2005 1, 27A-VIII-2006 1 and 27B-VIII-2006 1.
108. *Ypsolopha falciferella* (Wlsm.) (2380. *Ypsolopha falciferella* (Wlsm.)) – 18-VII-2004 1, 22A-IV-2005 2 and 16A-V-2006 1.

PLUTELLIDAE – Plutellid Moths

114. *Plutella xylostella* (L.) (2366. *Plutella xylostella* (L.)) (Diamondback Moth) – 8-VIII-2001 1, 1-IX-2001 1, 10-IX-2002 1, 24-IX-2004 1, 22A-IV-2005 1, 22B-IV-2005 1, 21-VI-2005 2, 2B-VIII-2005 1, 28A-VIII-2005 1, 6A-VIII-2006 1, 27A-VIII-2006 1, 27B-VIII-2006 1 and 27C-VIII-2006 1.

ELACHISTIDAE– Concealer Moths

Elachistidae, Depressariinae

138. *Agonopterix argillacea* (Wlsm.) (889. *Agonopterix argillacea* (Wlsm.)) – 28A-VIII-2005 1.
143. *Depressariodes ciniflonella* (Lienig & Zell.) (908. *Depressariodes ciniflonella* Lienig. & Zell.) – 2B-VIII-2005 1, 28A-VIII-2005 1 and 16B-V-2006 3.
144. *Depressariodes fulva* (Wlsm.) (910. *Martyrhilda fulva* (Wlsm.)) – 8-VI-2001 1, 20-VI-2001 1 and 12C-VI-2006 3.
146. *Semioscopis packardella* (Clem.) (912. *Semioscopis packardella* (Clem.)) (Packard's Concealer Moth) – 22A-IV-2005 2.
149. *Semioscopis megamicrella* Dyar (915. *Semioscopis megamicrella* Dyar) – 22A-IV-2005 1 and 22B-IV-2005 2.
150. *Semioscopis aurorella* Dyar (916. *Semioscopis aurorella* Dyar) – 22A-IV-2005 1.
151. *Depressaria atrostrigella* Clarke (918. *Depressaria atrostrigella* Clarke) – 24-IX-2004 6, 28A-VIII-2005 2 and 27B-VIII-2006 1.
155. *Depressaria alienella* Bsk. (926. *Depressaria alienella* Bsk.) – 28A-VIII-2005 1.

ELACHISTIDAE – Elachistid Moths

Elachistidae, Elachistinae

- Elachista* spp. – 27-VI-2002 1, 12-VII-2003 1, 12B-VII-2003 1, 12B-VI-2006 2, 12C-VI-2006 4, 4B-VII-2007 2 and 4D-VII-2007 3.
170. *Elachista virgatula* Kaila (Not in Hodges) – 25B-VI-2003 1.

XYLORICTIDAE – Scythrid Moths

Xyloryctidae, Scythridinae

183. *Scythris eboracensis* (Haw.) (1655. *Scythris eboracensis* (Haw.)) – 12-VI-2006 1. Determined by Dr. Jean-François Landry.

GLYPHIDOCERIDAE – Glyphidocerid Moths

189. *Glyphidocera hurlberti* Adamski (Not in Hodges) – 18-VII-2004 1, 4C-VII-2007 3 and 4D-VII-2007 2. This species was described by Adamski in 2000.

OECOPHORIDAE – Oecophorid Moths**Oecophoridae, Oecophorinae, Oecophorini**

193. *Polix coloradella* (Wlsm.) (1058. *Polix coloradella* (Wlsm.)) (The Skunk Moth) – 28A-VIII-2005 1.

COLEOPHORIDAE – Coleophorid Moths**COLEOPHORIDAE – Casebearer Moths****Coleophoridae, Coleophorinae**

196. *Batrachedra praeangusta* (Haw.) (1399. *Batrachedra praeangusta* (Haw.)) – 27A-VIII-2006 1.
Coleophora spp. – 12-VII-2002 1, 18-VII-2004 2, 2B-VIII-2005 1, 28A-VIII-2005 1, 6A-VIII-2006 1, 6B-VIII-2006 1, 27B-VIII-2006 1, and 4D-VII-2007 1. The above specimens are currently with Dr. J.-F. Landry who is doing a North American monograph of the group. Some of the JFL specimens may be of species that remain to be described. It is amazing how many species have been found in Dry Island Buffalo Jump Provincial Park.
197. *Coleophora elaeagnisella* Kft. (1260. *Coleophora elaeagnisella* Kft.) – 20-VI-2001 1 and 18-VII-2004 1.
199. *Coleophora pruniella* Clem. (1271. *Coleophora pruniella* Clem.) (Cherry Case-bearer) – 4B-VII-2007 1.
- 200.1. *Coleophora cretaticostella* Clem. (1283. *Coleophora cretaticostella* Clem.) – 12C-VI-2006 1. Reported as new for Alberta in Pohl et al 2011.
206. *Coleophora rosaevorella* McD. (1313. *Coleophora rosaevorella* McD.) – 19-VI-2004 1 and 21-VI-2005 1.
208. *Coleophora rosacella* Clem. (1316. *Coleophora rosacella* Clem.) – 4B-VII-2007 1.
- 209.1. *Coleophora sparsipuncta* Heinr. (1323. *Coleophora sparsipuncta* Heinr.) – 21-VI-2005 1 and 2A-VIII-2005 1. Reported as new for Alberta in Pohl et al 2011.
214. *Coleophora sparsipulvella* Cham. (1352. *Coleophora sparsipulvella* Cham.) – 12B-VII-2003 1, 18-VII-2004 1, 15-VIII-2004 1 and 28A-VIII-2004 1.
217. *Coleophora bidentella* McD. (1368. *Coleophora bidentella* McD.) – 21-VI-2005 1.
222. *Coleophora trifolii* (Curt. (1388. *Coleophora trifolii* (Curt.)) (Large Clover Case-bearer) – 20-VI-2001 1, 12-VII-2002 2, 12B-VII-2003 1, 18-VII-2004 2, 4B-VII-2007 3, 4C-VII-2007 2 and 4D-VII-2007 1.
- Coleophora* JFL013 – 18-VII-2004 1 and 4-VII-2007 1.
Coleophora JFL035 – 15-VIII-2004 1.
Coleophora JFL043 – 10-IX-2002 1.
Coleophora JFL055 – 27-VIII-2006 1.
Coleophora JFL063 – 12-VII-2002 1 and 12-VII-2003 1.
Coleophora JFL067 – 4C-VII-2007 1.

Coleophora JFL069 – 12B-VI-2006 1.
Coleophora JFL078 – 25-VI-2003 1 and 12B-VI-2006 1.
Coleophora JFL083 – 27-VI-2002 1.
Coleophora JFL084 – 15-VIII-2004 2 and 28A-VIII-2005 2.
Coleophora JFL090 – 4D-VII-2007 1.
Coleophora JFL092 – 10-IX-2002 1.
Coleophora JFL108 – 27-VI-2002 2 and 25-VI-2003 1.
Coleophora JFL109 – 8-VIII-2001 1.
Coleophora JFL118 – 12-VII-2003 1.
Coleophora JFL134 – 21-VI-2005 1.

Coleophoridae, Momphinae

Mompha sp. – 21-VI-2005 1.

Coleophoridae, Blastobasinae

Species indet. – 10-IX-2002 2, 6A-VIII-2006 1 and 6B-VIII-2006 1 and 4C-VII-2007 1. Species in this group are still very poorly known and many are undescribed. Dr. David Adamski is monographing the group for the Moths of North America series.

233. *Holcocera immaculella* McD. (1221. *Holcocera immaculella* McD.) – 10-IX-2002 1, 2A-VIII-2005 3 and 28A-VIII-2005 1. Dr. David Adamski feels that material called *Holcocera immaculella* McD. in previous reports, probably belong to an undescribed species of *Hypatopa*.

235. *Hypatopa titanella* McD. (1156. *Hypatopa titanella* McD.) – 18-VII-2004 1?.

COSMOPTERYGIDAE – Cosmopterygid Moths

Cosmopterigidae, Cosmopteriginae

241. *Limnaecia phragmitella* Staint. (1515. *Limnaecia phragmitella* Staint.) (Shy Cosmet Moth) – 15-VIII-2004 2.

242. *Walshia miscecolorella* (Cham.) (1615. *Walshia miscecolorella* (Cham.)) (Sweetclover Root Borer Moth) – 27-VI-2002 1, 12-VII-2002 1, 25C-VI-2003 2, 12A-VII-2003 1, 12B-VII-2003 2, 18-VII-2004 3, 21-VI-2005 1, 2A-VIII-2005 1, 12B-VI-2006 2, 27B-VIII-2006 1, 4B-VII-2007 1, 4C-VII-2007 3 and 4D-VII-2007 1.

GELECHIIDAE – Gelechiid Moths

Species indet. – 4-VI-2002 9, 27-VI-2002 1, 12-VII-2002 5, 21-VIII-2002 9, 10-IX-2002 9, 19-VI-2004 8, 18-VII-2004 15, 15-VIII-2004 14, 28-VIII-2004 12, 24-IX-2004 13, 22A-IV-2005 5, 22B-IV-2005 1, 21-VI-2005 10, 2A-VIII-2005 4, 2B-VIII-2005 5, 28A-VIII-2005 17, 16A-V-2006 2, 16B-V-2006 1, 12A-VI-2006 1, 12C-VI-2006 5, 2B-VIII-2006 1, 6A-VIII-2006 4, 6B-VIII-2006 2, 27A-VIII-2006 4, 27B-VIII-2006 6, 27C-VIII-2006 1, 30C-V-2007 4, 4B-VII-2007 2, 4C-VII-2007 3 and 4D-VII-2007 1. Little is known about many of the species in this family and it may be many years before some of these specimens are determined or even described.

Gelechiidae, Gelechiinae, Anomologini

Aristotelia sp. – 21-VIII-2002 1.

248. *Aristotelia devexella* Braun (1734. *Aristotelia devexella* Braun) – 25C-VI-2003 1, 15-VIII-2004 3, 2A-VIII-2005 1 and 28A-VIII-2005 1.

250. *Aristotelia roseosuffusella* (Clem.) (1761. *Aristotelia roseosuffusella* (Clem.)) – 10-IX-2002 2, 15-VIII-2004 2 and 28A-VIII-2005 1.

251. *Aristotelia rubidella* (Clem.) (1762. *Aristotelia rubidella* (Clem.)) – 2-VIII-2002 1 and 25C-VI-2003 1.

Gelechiidae, Gelechiinae, Litini

254. *Coleotechnites atrupictella* Dietz (1792. *Coleotechnites atrupictella* Dietz) – 2B-VIII-2005 2 and 4B-VII-2007 1.

256. *Coleotechnites blastovora* McLeod (1796. *Coleotechnites blastovora* McLeod) – 22A-IV-2005 1, 22B-IV-2005 1 and 16B-V-2006 5.

263. *Coleotechnites piceaella* (Kft.) (1826. *Coleotechnites piceaella* (Kft.)) (Orange Spruce Needleminer) – 18-VII-2004 1 and 28A-VIII-2005 1.

267. *Xenolechia velatella* (Bsk.) (1880. *Xenolechia velatella* (Bsk.)) – 19-VI-2004 1 and 30A-V-2007 1.

Gelechiidae, Gelechiinae, Gelechiini

270. *Prolita sexpunctella* (F.) (1898. *Lita sexpunctella* (F.)) – 2-V-2004 SR GP. Observed on the “Dry Island” by Greg Pohl. It was associated with bearberry.

271. *Prolita variabilis* (Bsk.) (1902. *Lita variabilis* (Bsk.)) – 21-VIII-2002 4, 10-IX-2002 5, 15-VIII-2004 3, 28-VIII-2004 1, 28A-VIII-2005 5, 6C-VIII-2006 1, 27B-VIII-2006 1 and 27C-VIII-2006 2.

282. *Gelechia lynceela* Zell. (1946. *Gelechia lynceela* Zell.) – 10-IX-2002 1, 19-VI-2004 1, 21-VI-2005 1 and 4B-VII-2007 2.

Gelechiidae, Gelechiinae, Gelechiini

Chionodes spp. – 8-VI-2001 2 and 18-VII-2004 1.

288. *Chionodes landryi* Hodges (Not in Hodges) – 27-VI-2002 6, 12B-VII-2003 10, 12B-VI-2006 2, 12C-VI-2006 1 and 4C-VII-2007 1.

291. *Chionodes obscuruscella* (Cham.) (2099. *Chionodes obscuruscella* (Cham.)) (Boxelder Leafworm) – 28A-VIII-2005 8.

292. *Chionodes mediofuscella* (Clem.) (2093. *Chionodes mediofuscella* (Clem.)) – 4-VI-2002 1, 25C-VI-2003 1, 19-VI-2004 1, 21-VI-2005 1 and 28A-VIII-2005 1, 16B-V-2006 1 and 30A-V-2007 1.

293. *Chionodes terminimaculella* (Kft.) (2117. *Chionodes terminimaculella* (Kft.)) – 20-VI-2001 1 and 27-VI-2002 1.

300. *Chionodes psiloptera* (B. & Bsk.) (2111. *Chionodes psilopterus* (B. & Bsk.)) – 1-IX-2001 1, 25-VI-2003 1, 12A-VII-2003 1, 12B-VII-2003 1, 19-VI-2004 1, 18-VII-2004 2, 15-VIII-2004 2, 2B-VIII-2005 1, 12C-VI-2006 1, 6A-VIII-2006 2, 6B-VIII-2006 2, 27A-VIII-2006 1, 27B-VIII-2006 2, 27C-VIII-2006 2, 4C-VII-2007 1 and 4D-VII-2007 1.

307. *Chionodes viduella* (F.) (2123. *Chionodes viduella* (F.)) – 18-VII-2004 6.

310. *Chionodes sattleri* Hodges (Not in Hodges) – 19-VI-2004 1, 15-VIII-2004 1, 21-VI-2005 3 and 6A-VIII-2006 1.

317. *Filatima abactella* (Clarke) (2127. *Filatima abactella* (Clarke)) – 20-VI-2001 1, 27-VI-2002 1, 19-VI-2004 1, 21-VI-2005 1, 16A-V-2006 1 and 16B-V-2006 1.

Not in Pohl et al. (2192. *Aroga* nr. *paraplutella* (Bsk.)) – 20-VI-2001 2, 27-VI-2002 2. The specimens were examined by Dr. Jean-François Landry who originally thought that they were *Aroga paraplutella* which would have been a new species for Alberta. Further examination indicates that this material is of an undescribed species of *Aroga*.

Gelechiidae, Gelechiinae, Gnorimoschemini

The Alberta members of this group are presently being studied by Vazrick Nazari. A number of new species will be described.

Gnorimoschema sp. – 1-IX-2001 1.

332. *Gnorimoschema septentrionella* Fyles (2000. *Gnorimoschema septentrionella* Fyles) – 24-IX-2004 1.

344. *Caryocolum cassella* (Wlk.) (2040. *Caryocolum cassella* (Wlk.)) – 20-VI-2001 2.

Gelechiidae, Gelechiinae, Anacamptini

349. *Anacamptis fragariella* Bsk. (2235. *Anacamptis fragariella* Bsk.) – 28 A-VIII-2005 1.

350. *Anacamptis innocuella* (Zell.) (2237. *Anacamptis innocuella* (Zell.)) (Dark-headed Aspen Leafroller) – 28A-VIII-2005 9 and 16A-V-2006 1.

351. *Anacamptis niveopulvella* (Cham.) (2243. *Anacamptis niveopulvella* (Cham.)) – 18-VII-2004 4, 15-VIII-2004 3 and 28A-VIII-2005 4.

Gelechiidae, Dichomeridinae

354. *Helcystogramma fernaldella* (Bsk.) (2267. *Brachmia fernaldella* (Bsk.)) – 20-VI-2001 1, 27-VI-2002 1, 25C-VI-2003 1 and 12B-VI-2006 2.

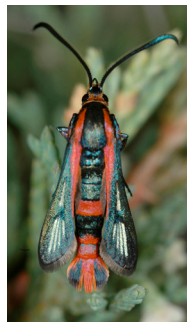
356. *Dichomeris setosella* (Clem.) (2302. *Dichomeris setosella* (Clem.)) – 28A-VIII-2005 2.

358. *Dichomeris purpureofusca* (Wlsm.) (2308. *Dichomeris purpureofusca* (Wlsm.)) – 20-VI-2001 1.

359. *Dichomeris simpliciella* Bsk. (2303. *Dichomeris simpliciella* Bsk.) – 12B-VII-2003 1, 18-VII-2004 3, 28-VIII-2004 1, 24-IX-2004 1 and 21-VI-2005 1.

SESIIDAE – Sesiid Moths

Sesiidae, Sesiinae, Synanthedonini



386. *Synanthedon polygona* (Hy. Edw.) (2581. *Synanthedon polygona* (Hy. Edw.)) (Buckwheat Borer Moth) – 5-VI-2006 photo by Dr. Heather Proctor (see above). This is a first report of this western North American species for Alberta. The food plant is thought to be *Eriogonum flavum* (Yellow Umbrella-plant) which occurs on steep south-facing slopes in the area.

TORTRICIDAE – Tortricid Moths

Species indet. – 8-VI-2001 2, 20-VI-2001 1 and 28A-VIII-2005 1.

Tortricidae, Tortricinae, Tortricini

Acleris sp. – 10-IX-2002 1 and 27B-VIII-2006 1.

403. *Acleris albicomana* (Clem.) (3502. *Croesia albicomana* (Clem.)) – 12-VII-2002 2, 12B-VII-2003 1, 18-VII-2004 2, 2B-VIII-2005 1, 4B-VII-2007 1 and 4D-VII-2007 1.
411. *Acleris fuscana* (B. & Bsk.) or 414. *Acleris cornana* (McD.) (3520. *Acleris fuscana* (B. & Bsk.) or 3523. *Acleris cornana* (McD.)) (Small Aspen Leaf-tier) – 10-IX-2002 1, 16A-V-2006 1 and 16B-V-2006 4.
417. *Acleris oxycoccana* (Pack.) (3529. *Acleris oxycoccana* (Pack.)) – 20-VI-2001 1, 24-IX-2004 1 and 27A-VIII-2006 1.
422. *Acleris robinsoniana* (Fbs.) (3536. *Acleris robinsoniana* (Fbs.)) – 24-IX-2004 1, 28A-VIII-2005 3, 6A-VIII-2006 1, 6B-VIII-2006 1, 27A-VIII-2006 1, 27B-VIII-2006 1 and 27C-VIII-2006 1.
431. *Acleris variana* (Fern.) (3548. *Acleris variana* (Fern.)) (Eastern Black-headed Budworm Moth) – 28A-VIII-2005 2 and 6A-VIII-2006 2.
438. *Acleris effractana* (Hbn.) (3559. *Acleris emargana* (F.)) (Hook-winged Tortrix Moth) – 27A-VIII-2006 1.

Tortricidae, Tortricinae, Cochylini

The members of this group are being revised by Dr. Eric Metzler and Dr. John Brown. Some of the following specimens are now being studied by them.

440. *Phthochroa aureoalbida* (Wlsm.) (3794. *Hysterosia aureoalbida* (Wlsm.)) - 4D-VII-2007 1?
443. *Phthochroa fulviplicana* (Wlsm.) (3792. *Hysterosia fulviplicana* (Wlsm.)) – 12-VII-2002 1 and 18-VII-2004 1.
447. *Phthochroa vulneratana* (Zett.) (Not in Hodges) – 27C-VIII-2006 2?.
458. *Aethes rutilana* (Hbn.) (3758. *Aethes rutilana* (Hbn.)) – 12-VII-2002 1.

460. *Aethes smeathmanniana* (F.) (3755. *Aethes smeathmanniana* (F.)) (Smeathman's Aethes Moth) - 4D-VII-2007 1.

Tortricidae, Tortricinae, Cnephasini

466. *Eana argentana* (Cl.) (3568. *Eana argentana* (Cl.)) – 12-VII-2002 1.

469. *Decodes horariana* (Wlsm.) (3580. *Decodes hororianus* (Wlsm.)) – 1-IX-2001 1, 10-IX-2002 1 and 24-IX-2004 2.

Tortricidae, Tortricinae, Archipini

472. *Pandemis canadana* Kft. (3595. *Pandemis canadana* Kft.) (Green Aspen Leafier) – 6B-VIII-2006 1, 4B-VII-2007 1
4C-VII-2007 1 and 4D-VII-2007 1.

479. *Argyrotaenia quadrifasciana* (Fern.) (3621. *Argyrotaenia quadrifasciana* (Fern.)) (Lesser All-green Leafroller Moth, Four-lined Leafier) – 4B-VII-2007 1, 4C-VII-2007 2 and 4D-VII-2007 3.

483. *Choristoneura rosaceana* (Harr.) (3635. *Choristoneura rosaceana* (Harr.)) (Oblique-banded Leafroller Moth) – 12-VII-2002 2, 18-VII-2004 4, 15-VIII-2004 1, 6A-VIII-2006 2, 27A-VIII-2006 1 and 4B-VII-2007 1.

485. *Choristoneura conflictana* (Wlk.) (3637. *Choristoneura conflictana* (Wlk.)) (Large Aspen Tortrix) – 27-VI-2002 1, 12-VII-2002 1, 19-VI-2004 2, 18-VII-2004 2, 21-VI-2005 2, 12C-VI-2006 1 and 4B-VII-2007 1.

486. *Choristoneura fumiferana* (Clem.) (3638. *Choristoneura fumiferana* (Clem.)) (Spruce Budworm Moth) – 15-VIII-2004 6 and 4B-VII-2007 2.

495. *Archips argyrospila* (Wlk.) (3648. *Archips argyrospila* (Wlk.)) (Fruit-tree Leafroller Moth) – 18-VII-2004 1.

498. *Archips cerasivorana* (Fitch) (3661. *Archips cerasivorana* (Fitch)) (Ugly Nest Caterpillar Moth) – 2A-VIII-2005 1.

499. *Archips purpurana* (Clem.) (3658. *Archips purpurana* (Clem.)) - 4C-VII-2007 1 and 4D-VII-2007 1.

504. *Aphelia alleniana* (Fern.) (3675. *Aphelia alleniana* (Fern.)) – 20/21-VII-2001 1 E. Mengersen (OLDS), 12-VII-2002 1, 25C-VI-2003 1 and 4C-VII-2007 1.

508. *Clepsis persicana* (Fitch) (3682. *Clepsis persicana* (Fitch)) (White Triangle Tortrix Moth, White Triangle Leafroller) – 20-VI-2001 3, 27-VI-2002 2, 12-VII-2002 1, 18-VII-2004 1, 21-VI-2005 2, 12A-VI-2006 1, 12C-VI-2006 1, 4B-VII-2007 1, 4C-VII-2007 1 and 4D-VII-2007 1.

509. *Clepsis clemensiana* (Fern.) (3684. *Clepsis clemensiana* (Fern.)) (Clemen's Clepsid Moth) – 28-VIII-2004 1, 4D-VII-2007 1, 25B-VII-2007 1 and 25D-VII-2007 1.

512. *Ptycholoma peritana* (Clem.) (3688. *Ptycholoma peritana* (Clem.)) (Garden Tortrix Moth) – 18-VII-2004 1, 2A-VIII-2005 1, 4C-VII-2007 1 and 4D-VII-2007 1.

513. *Ptycholoma virescana* (Clem.) (3689. *Ptycholoma virescana* (Clem.)) – 27C-VIII-2006 2.

Tortricidae, Tortricinae, Sparganothidini

518. *Sparganothis xanthoides* (Wlk.) (3706. *Sparganothis xanthoides* (Wlk.)) (Mosaic Sparganothis Moth) – 12-VII-2002 1.

520. *Sparganothis unifasciana* (Clem.) (3711. *Sparganothis unifasciana* (Clem.)) (One-lined Sparganothis Moth) – 12-VII-2002 2, 25C-VI-2003 1, 12B-VII-2003 1, 18-VII-2004 3, 21-VI-2005 1, 4B-VII-2007 2, 4C-VII-2007 1 and 4D-VII-2007 1.
521. *Sparganothis vocaridorsana* Kft. (3712. *Sparganothis vocaridorsana* Kft.) – 20-VI-2001 1.
522. *Sparganothis reticulatana* (Clem.) (3720. *Sparganothis reticulatana* (Clem.)) Reticulated Fruitworm Moth) – 10-IX-2002 2, 18-VII-2004 2 and 2B-VIII-2005 1.
523. *Platynota idaeusalis* (Wlk.) (3740. *Platynota idaeusalis* (Wlk.)) (Tufted Apple Bud Moth) – 18-VII-2004 1, 28A-VIII-2005 1 and 4C-VII-2007 1.

Tortricidae, Olethreutinae, Endotheniini

- Olethrutinae indet - 27-VI-2002 1, 19-VI-2004 2. 18-VII-2004 5 and 16B-V-2006 1.
Bactra sp. – 10-IX-2002 1 (female).
533. *Endothenia nubilana* (Clem.) (2743a. *Endothenia quadrimaculana nubilana* (Clem.)) – 18-VII-2004 2 and 4C-VII-2007 1.
534. *Taniva albolineana* (Kft.) (2745. *Endothenia albolineana* (Kft.)) (Spruce Needleminer) – 19-VI-2004 1 and 21-VI-2005 4.
547. *Apotomis removana* Kft. (2766. *Apotomis dextrana* (McD.)) (Green Aspen Leafroller) – 8-VIII-2001 1, 4-VI-2002 1, 27-VI-2002 1 and 21-VI-2005 1.
551. *Apotomis capreana* (Hbn.) (2753. *Apotomis capreana* (Hbn.)) (Sallow Apotomis Moth) – 16A-V-2006 1.
556. *Pseudosciaphila duplex* (Wlsm.) (2769. *Pseudosciaphila duplex* (Wlsm.)) (Spotted Aspen Leafroller) – 27-VI-2002 1, 21-VI-2005 1 and 12A-VI-2006 2.
557. *Orthotaenia undulana* (D. & S.) (2770. *Orthotaenia undulana* (D. & S.)) (Dusky Leafroller) – 20-VI-2001 1 and 19-VI-2004 2, 21-VI-2005 1, 12A-VI-2006 3, 12B-VI-2006 1, 12C-VI-2006 3, 4B-VII-2007 1, 4C-VII-2007 1 and 4D-VII-2007 1.
- Olethreutes* spp. – 8-VIII-2001 1, 27-VI-2002 1, 10-IX-2002 1, 25A-VI-2003 1, 25C-VI-2003 1, 12B-VII-2003 1, 18-VII-2004 3, 2A-VIII-2005 1, 12A-VI-2006 2, 12C-VI-2006 1 and 4C-VII-2007 1. Many of the species in this genus are difficult to identify, require genitalic examination and/or are poorly known.
560. *Olethreutes inornatana* (Clem.) (2788. *Olethreutes inornatana* (Clem.)) (Inornate Olethreutes Moth) – 18-VII-2004 1 and 21-VI-2005 1.
- 560/561. *Olethreutes inornatana/quadrifidus* (2788/2794. *Olethreutes inornatana* or *quadrifidus*) - 4B-VII-2007 2 and 4C-VII-2007 3.
561. *Olethreutes quadrifidus* (Zell.) (2794. *Olethreutes quadrifidus* (Zell.)) – 27-VI-2002 1 and 21-VI-2005 5.
562. *Olethreutes appendiceum* (Zell.) (2821. *Olethreutes appendicea* (Zell.)) (Serviceberry Olethreutes Moth) – 16A-V-2006 2.
566. *Olethreutes galaxana* Kft. (2835. *Olethreutes galaxana* Kft.) – 8-VI-2001 1 and 20-VI-2001 1.
568. *Olethreutes coruscana* (Clem.) or 569. *Olethreutes metallicana* (Hbn.) (2839. *Olethreutes puncticostana* (Wlk.)) – 6-VII-2004 2.
584. *Hedya ochroleucana* (Frölich) (2861. *Hedya ochroleucana* (Frölich)) (Off-white Hedya Moth) – 18-VII-2004 1 and 4B-VII-2007 1.
585. *Hedya nubiferana* (Haw.) (2862. *Hedya nubiferana* (Haw.)) – 15-VIII-2004 1 and 21-VI-2005 1.

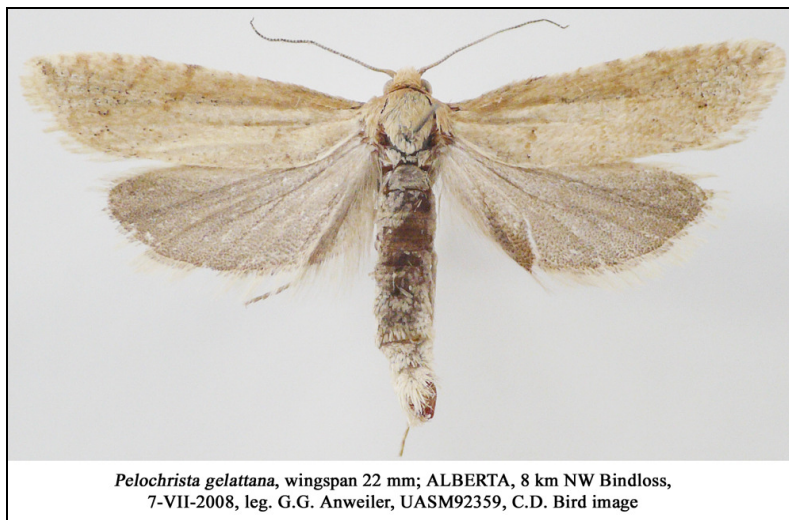
Tortricidae, Olethreutinae, Enarmoniini

587. *Ancylis subaequana* (Zell.) (3355. *Ancylis subaequana* (Zell.)) – 21-VI-2005 1 and 12C-VI-2006 1.
595. *Ancylis comptana* (Frölich) (3374. *Ancylis comptana* (Frölich)) (Strawberry Leafroller Moth) – 19A-VI-2006 1.
600. *Ancylis unguicella* (L.) (3382. *Ancylis unguicella* (L.)) – 19-VI-2004 2 and 12B-VI-2006 1.
601. *Ancylis mediofusca* (Clem.) (3384. *Ancylis mediofusca* (Clem.)) – 8-VI-2001 1, 16A-V-2006 2 and 16B-V-2006 2.
602. *Ancylis tineana* (Hbn.) (3386. *Ancylis tineana* (Hbn.)) – 8-VI-2001 1.
604. *Hystrichophora stygiana* (Dyar) (3391. *Hystrichophora stygiana* (Dyar)) – 25B-VI-2003 1, 12B-VII-2003 1, 19-VI-2004 2, 18-VII-2004 1, 2A-VIII-2005 1, 6A-VIII-2006 1, 6C-VIII-2006 1, 27A-VIII-2006 1 and 4C-VII-2007 1.
605. *Hystrichophora ochreicostana* (Wlsm.) (3396. *Hystrichophora ochreicostana* (Wlsm.)) – 18-VII-2004 1, 21-VI-2005 2 and 4D-VII-2007 1.
606. *Hystrichophora vestaliana* (Zell.) (3399. *Hystrichophora vestaliana* (Zell.)) – 21-VI-2005 4 and 4D-VII-2007 1. New to Alberta when discovered.

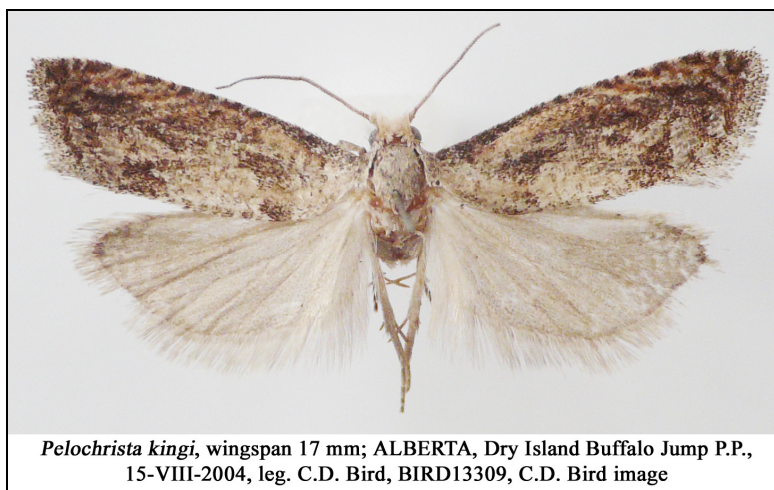
Tortricidae, Olethreutinae, Eucosmini

612. *Retinia burkeana* (Kft.) (2900. *Petrova burkeana* (Kft.)) – 18-VII-2004 1.
Phaneta spp. - 4D-VII-2007 1.
628. *Phaneta parmatana* (Clem.) (2937. *Phaneta parmatana* (Clem.)) – 12A-VI-2006 1.
630. *Phaneta influana* (Heinr.) (2947. *Phaneta influana* (Heinr.)) – 17-VI-2002 2.
636. *Phaneta tarandana* (Mösch.) (2956. *Phaneta tarandana* (Mösch.)) – 10-IX-2002 2, 15-VIII-2004 1 and 27C-VIII-2006 1.
641. *Phaneta fertoriana* (Heinr.) (2965. *Phaneta fertoriana* (Heinr.)) – 20-VI-2001 2, 25A-VI-2003 4, 19-VI-2004 2, 21-VI-2005 2, 4A-VII-2007 1 and 4C-VII-2007 1.
643. *Phaneta indagatricana* (Heinr.) (2969. *Phaneta indagatricana* (Heinr.)) – 12A-VII-2003 1, 12B-VII-2003 2, 18-VII-2004 7, 12B-VI-2006 1, 12C-VI-2006 1.
644. *Phaneta dorsiatomana* (Kft.) (2972. *Phaneta dorsiatomana* (Kft.)) – 4-VI-2002 2.
645. *Phaneta striatana* (Clem.) (2973. *Phaneta striatana* (Clem.)) (Striated Phaneta Moth) – 27-VI-2002 1, 21-VI-2005 2, 16B-V-2006 1, 12B-VI-2006 1, 4C-VII-2007 1 and 4D-VII-2007 1.
647. *Phaneta modicellana* (Heinr.) (2977. *Phaneta modicellana* (Heinr.)) – 25A-VI-2003 1 and 18-VII-2004 3.
648. *Phaneta pallidicostana* (Wlsm.) (2980. *Phaneta pallidicostana* (Wlsm.)) – 27-VI-2002 1, 12-VII-2002 1, 18-VII-2004 3, 12B-VI-2006 1, 12C-VI-2006 1, 4B-VII-2007 1, 4C-VII-2007 3 and 4D-VII-2007 2.
650. *Phaneta infimbriana* (Dyar) (2985. *Phaneta infimbriana* (Dyar)) – 2A-VIII-2005 1, 28A-VIII-2005 4, 6B-VIII-2006 2, 27B-VIII-2006 1 and 27C-VIII-2006 1.
- Eucosma* n. sp. 1 – 10-IX-2002 1. Mentioned in the last report as 3156 *Pelochrista occipitana*, this is an undescribed species according to Dr. Don Wright.
656. *Eucosma ridingsana* (Rob.) (3014. *Eucosma ridingsana* (Rob.)) (Riding's Eucosma Moth, Snakeweed Borer Moth) – 10-IX-2002 1.
660. *Eucosma serpentana* (Wlsm.) (3031. *Eucosma serpentana* (Wlsm.)) – 27-VI-2002 1, 12-VII-2002 1, 21-VIII-2002 1, 10-IX-2002 3, 12B-VII-2003 2, 18-VII-2004 6, 15-VIII-2004 5, 28-VIII-2004 2, 24-IX-2004 1, 21-VI-2005 2, 28A-VIII-2005 3, 12B-VI-2006 1, 12C-VI-2006 2, 4A-VII-2007 1 and 4C-VII-2007 2.
661. *Eucosma ophionana* McD. (3032. *Eucosma ophionana* McD.) - 4C-VII-2007 1 and 4D-VII-2007 1.

662. *Eucosma morrisoni* (Wlsm.) (3035. *Eucosma morrisoni* (Wlsm.)) – 18-VII-2004 5.
664. *Eucosma agricolana* (Wlsm.) (3037. *Eucosma agricolana* (Wlsm.)) – 27-VI-2002 7, 12-VII-2002 1, 10-IX-2002 1, 25B-VI-2003 1, 12B-VII-2003 2, 19-VI-2004 15, 18-VII-2004 14, 15-VIII-2004 4, 21-VI-2005 11, 16A-V-2006 1, 12A-VI-2006 1, 12B-VI-2006 3, 12C-VI-2006 2 and 4B-VII-2007 1.
683. *Eucosma dorsisignatana* (Clem.) (3116. *Eucosma dorsisignatana* (Clem.)) (Triangle-backed Eucosma Moth) - 27A-VIII-2006 1, 27B-VIII-2006 3, 27C-VIII-2006 2 – 1-IX-2001 1, 10-IX-2002 2, 28A-VIII-2005 3 and 12C-VI-2006 1.
685. *Eucosma juncticiliana* (Wlsm.) (3119. *Eucosma juncticiliana* (Wlsm.)) – 6B-VIII-2006 1.
Not in Pohl et al. (3133. *Eucosma consobrinana* Heinr.) – 18-VII-2004 1.
692. *Eucosma cataclystana* (Wlk.) (3142. *Eucosma cataclystana* (Wlk.)) (Solidago Eucosma Moth) – 25B-VI-2003 1, 21-VI-2005 1, 4B-VII-2007 1 and 4C-VII-2007 1.
- Pelochrista* spp. – 21-VI-2005 2. Dr. Donald Wright calls one specimen (BIRD16733) *Pelochrista* sp. and the other (BIRD16734) either a *Eucosma* or a *Pelochrista*. They look unlike anything in the BIRD Collection.
694. *Pelochrista argenteana* (Wlsm.) (3149. *Pelochrista argenteana* (Wlsm.)) - 4C-VII-2007 1 and 4D-VII-2007 4.



695. *Pelochrista gellatana* Wright (not in Hodges) – 8-VI-2001 1, 20-VI-2001 1, 27-VI-2002 1.
Described as new to science based on specimens from Alberta, Utah and Wyoming (Wright 2007).
696. *Pelochrista scintillana* (Clem.) (3151a. *Pelochrista scintillana* (Clem.)) – 18-VII-2004 4.
698. *Pelochrista mediotriata* (Wlsm.) (3104. *Eucosma mediotriata* (Wlsm.)) – 18-VII-2004 1.



699. *Pelochrista kingi* Wright (*Pelochrista kingi* Wright) – 12B-VII-2003 1, 26-VI-2004 2 and 15-VIII-2004 1 (BIRD13309). Mentioned in the last report as *Pelochrista* n. sp. 3. *Pelochrista kingi*, new species, is described and illustrated on the basis of Alberta Paratype material from Dry Island (Bird, BIRD), Jasper (McDunnough, CNC), Lethbridge (Seamans, CNC), Nordegg (McDunnough, CNC) and Edmonton? (Bowman, UASM). The type series consists of 33 adults from Alberta, British Columbia, Saskatchewan, Arizona, Montana, South Dakota and Wyoming. (Wright 2008).
701. *Epiblema benignatum* (McD.) (3185. *Epiblema benignatum* (McD.)) – 18-VII-2004 2, 21-VI-2005 2, 28A-VIII-2005 2, 27B-VIII-2006 4, 27C-VIII-2006 1 and 4B-VII-2007 1.
707. *Notocelia purpurissitana* Heinr. (3209. *Notocelia purpurissitana* Heinr.) – 4C-VII-2007 1 and 4D-VII-2007 1.
709. *Notocelia culminana* (Wlsm.) (3211. *Notocelia culminana* (Wlsm.)) – 10-IX-2002 1, 2A-VIII-2005 1, 2B-VIII-2005 4, 6A-VIII-2006 1 and 27B-VIII-2006 1.
710. *Gypsonoma fasciolana* (Clem.) 3223. *Gypsonoma fasciolana* (Clem.) – 20-VI-2001 5, 12A-VI-2006 2 and 12C-VI-2006 1.
714. *Gypsonoma substitutionis* Heinr. (3227. *Gypsonoma substitutionis* Heinr.) – 12A-VI-2006 1.
716. *Gypsonoma adjuncta* Heinr. (3229. *Gypsonoma adjuncta* Heinr.) – 12A-VI-2006 3.
717. *Proteoteras aesculana* Riley (3230. *Proteoteras aesculana* Riley) (Early *Proteoteras* Moth, Maple Twig Borer Moth) – 27A-VIII-2006 1.
725. *Pseudexentera oregonana* (Wlsm.) (3248. *Pseudexentera oregonana* (Wlsm.)) (Early Aspen Leafroller) – 22A-IV-2005 1, 16A-V-2006 1 and 16B-V-2006 1.
727. *Griselda radicana* Heinr. (3269. *Griselda radicana* Heinr.) – 24-IX-2004 1 and 27A-VIII-2006 1.
728. *Rhopobota naevana* (Haw.) (3276. *Rhopobota naevana* (Haw.)) (Holly Tortrix Moth) – 24-IX-2004 1, 2B-VIII-2005 2 and 28A-VIII-2005 2.
733. *Epinotia castaneana* (Wlsm.) (3288. *Epinotia castaneana* (Wlsm.)) – 18-VII-2004 1, 4B-VII-2007 3, 4C-VII-2007 1 and 4C-VII-2007 1.
736. *Epinotia albicapitana* (Kft.) (3296. *Epinotia albicapitana* (Kft.)) – 24-IX-2004 4, 27A-VIII-2006 4 and 27B-VIII-2006 2. Reported as new for Alberta in Pohl et al (2005).
740. *Epinotia nisella* (Cl.) (3306. *Epinotia nisella* (Cl.)) (Variable Tortrix Moth, Poplar Branchlet Borer Moth, Yellow-headed Aspen Leaf-tier) – 10-IX-2002 1, 18-VII-2004 4, 15-VIII-2004 3, 24-IX-2004 1, 28A-VIII-2005 1, 6A-VIII-2006 2 and 27A-VIII-2006 1.
741. *Epinotia criddleana* Kft. (3307. *Epinotia criddleana* Kft.) – 28A-VIII-2005 1.

749. *Epinotia columbia* (Kft.) (3324. *Epinotia crenana* Hbn.) – 6B-VIII-2006 1.
 753. *Epinotia lomonana* (Kft.) (3342. *Epinotia lomonana* (Kft.)) – 24-IX-2004 5, 28A-VIII-2005 6 and 27A-VIII-2006 2..
 757. *Epinotia lindana* (Fern.) (3351. *Epinotia lindana* (Fern.)) (Diamondback Epinotia Moth) – 28-VIII-2004 1, 28A-VIII-2005 5 and 27A-VIII-2006 3.

Tortricidae, Olethreutinae, Grapholitini

758. *Dichrorampha simulana* (Wlsm.) (3404. *Dichorampha simulana* (Wlsm.)) – 27-VI-2002 1.
 759. *Dichrorampha bittana* (Bsk.) (3406. *Dichorampha bittana* (Bsk.)) – 19-VI-2004 1.
 763. *Dichrorampha sedatana* (Bsk.) (3412. *Dichrorampha sedatana* (Bsk.)) (Tanacetum Root Moth) – 8-VI-2002 1.
Cydia sp. – 21-VI-2005 1.
 776. *Cydia strobilella* (L.) (3455. *Cydia strobilella* (L.)) – 12B-VI-2006 1.
 778. *Cydia ingrata* (Heinr.) (3460. *Cydia ingrata* (Heinr.)) – 16B-V-2006 3.
 779. *Cydia populana* (Bsk.) (3463. *Cydia populana* (Bsk.)) – 27-VI-2002 1 and 21-VI-2005 1.
 780. *Cydia flexiloqua* (Heinr.) (3465. *Cydia flexiloqua* (Heinr.)) – 27-VI-2002 1 and 2B-VIII-2005 1.
 781. *Cydia nigricana* (F.) (3467. *Cydia nigricana* (F.)) (Pea Moth) - 4A-VII-2007 1.

EPERMINIIDAE – Eperminiid Moths

791. *Ochromolopis ramapoella* (Kft.) (2334. *Ochromolopis ramapoella* (Kft.)) – 8-VI-2001 2, 20-VI-2001 6 and 27-VI-2002 1, 16B-V-2006 1, 12C-VI-2006 4 and 4C-VII-2007 2. Reported as new to Alberta in Pohl et al (2005).

ALUCITIDAE – Many-plume Moths

792. *Alucita montana* Barnes & Lindsey (2313. *Alucita hexadactyla* L.) (Six Plume Moth) – 20-VI-2001 3, 8-VIII-2001 1, 1-IX-2001 2, 4-VI-2002 5, 10-IX-2002 1, 25A-VI-2003 1, 19-VI-2004 2, 24-IX-2004 2 and 21-VI-2005 1. Bernard Landry and Jean-François Landry (2004) have shown that true *hexadactyla* does not occur in North America and that three other species occur in Alberta.

PTEROPHORIDAE – Plume Moths

- Species indet. – 12-VII-2002 2, 2-VIII-2005 2, 21-VIII-2005 1, 12-VI-2006 2, 4B-VII-2007 3, 4C-VII-2007 2 and 4D-VII-2007 4. These specimens are currently being examined by Doug Macaulay.

Pterophoridae, Pterophorinae, Platyptiliini

800. *Gillmeria pallidactyla* (Haw.) (6107. *Gillmeria pallidactyla* (Haw.)) – 20-VI-2001 3, 21-VI-2005 1 and 12-VI-2006 3.

Pterophoridae, Pterophorinae, Oxyptilini

818. *Dejongia lobidactyla* (Fitch) (6102. *Trichoptilus lobidactylus* (Fitch)) – 12-VII-2003 1.

Pterophoridae, Pterophorinae, Oidaematophorini

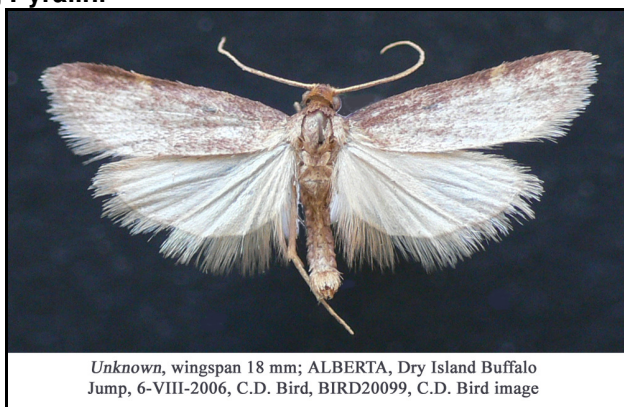
822. *Hellinsia homodactylus* (Wlk.) (6203. *Hellinsia homodactylus* (Wlk.)) – 18-VII-2004 1.
 833. *Oidaematophorus mathewianus* (Zell.) (6166. *Oidaematophorus mathewianus* (Zell.))
 (Mathew's Plume Moth) – 2-VIII-2005 1, 6-VIII-2006 1 and 27-VIII-2006 1.
 835. *Oidaematophorus grisescens* (Wlsm.) (6171. *Oidaematophorus grisescens* Wlsm.) – 15-VIII-
 2004 1.

CARPOSINIDAE – Carposinid Moths

846. *Bondia crescentella* (Wlsm.) (2319. *Bondia crescentella* (Wlsm.)) - 30B-V-2007 1.

PYRALIDAE – Pyralid Moths

Pyralidae, Pyralinae, Pyralini



Not in Pohl et al. *Aglossa* sp. Originally thought to be *Achyra bifidalis* (F.) (4974. *Achyra bifidalis* (F.)) – 12B-VI-2006 2, 6A-VIII-2006 1 (see above) and 4C-VII-2007 1. These specimens have turned out to belong to an undescribed Pyralid which Dr. Alma Solis thinks may be in the genus *Aglossa*.

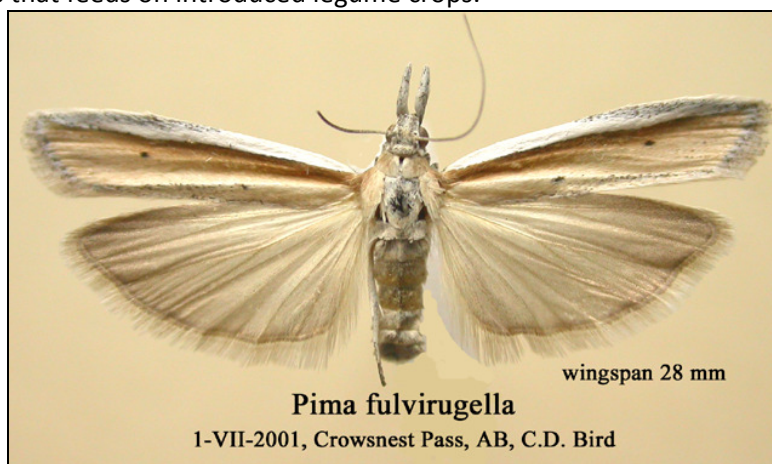
Pyralidae, Epipaschiinae

856. *Toripalpus trabalis* (Grt.) (5585. *Toripalpus trabalis* (Grt.)) (Jocara Moth) – 27-VI-2002 1, 12-VII-2002 1, 12B-VII-2003 1 and 18-VII-2004 2.
 858. *Pococera asperatella* (Clem.) (5606. *Tetralopha asperatella* (Clem.)) (Maple Webworm) – 19-VI-2004 2, 18-VII-2004 1, 21-VI-2005 2, 12A-VI-2006 1 and 4B-VII-2007 1.

Pyralidae, Phycitinae, Phycitini

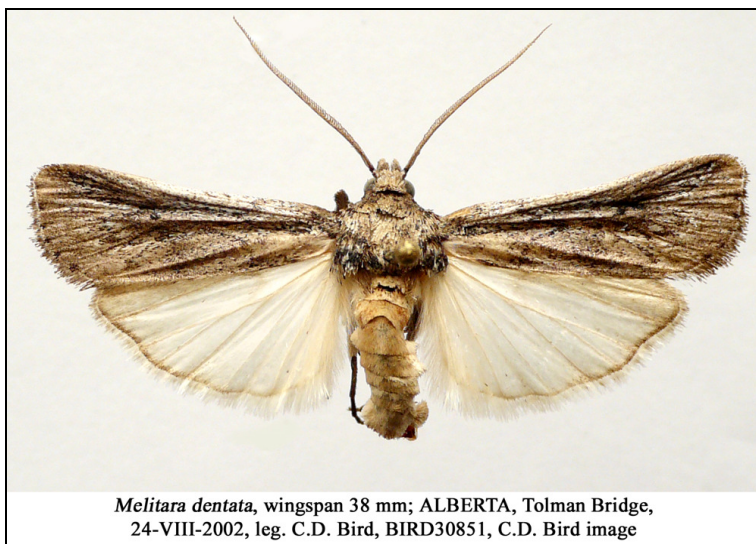
861. *Acrobasis tricolorella* Grt. (5655. *Acrobasis tricolorella* Grt.) (Tricolored Acrobasis Moth) – 12-VII-2002 1, 12A-VII-2003 1, 19-VI-2004 1, 18-VII-2004 7, 21-VI-2005 1, 2A-VIII-2005 1, 12B-VI-2006 1, 4B-VII-2007 3, 4C-VII-2007 1 and 4D-VII-2007 2.
 863. *Myelopsis minutularia* (Hulst) (5719. *Myelopsis coniiella* (Rag.)) – 4/5-VII-2001 (EM), 8/9-VIII-2001 (EM), 21-VIII-2002 2 10-IX-2002 4, 12B-VII-2003 1, 18-VII-2004 3, 15-VIII-2004 8, 28-VIII-2004 3, 24-IX-2004 2, 2A-VIII-2005 2, 28A-VIII-2005 3, 6A-VIII-2006 1 and 6B-VIII-2006 1.

864. *Myelopsis subtetricella* (Rag.) (5718. *Myelopsis subtetricella* (Rag.)) – 1-IX-2001 1, 4-VI-2002 5, 27-VI-2002 2, 21-VIII-2002 8, 10-IX-2002 2, 19-VI-2004 2, 18-VII-2004 3, 24-IX-2004 1, 21-VI-2005 2, 2A-VIII-2005 1, 16A-V-2006 2, 12A-VI-2006 2, 6A-VIII-2006 1 and 4B-VII-2007 1.
865. *Apomyelois bistriatella* (Hulst) (5721. *Apomyelois bistriatella* (Hulst)) – 18-VII-2004 1 and 4B-VII-2007 1.
866. *Eulogia ochrifrontella* (Zell.) (5999. *Eulogia ochrifrontella* (Zell.)) (Broad-banded Eulogia Moth) – 12A-VII-2003 1, 12B-VII-2003 1 and 18-VII-2004 2.
870. *Vitula seratilineella* Rag. (6007a. *Vitula seratilineella* Rag.) – 18-VII-2004 1, 24-IX-2004 3, 21-VI-2005 1, 2A-VIII-2005 1, 28A-VIII-2005 3, 12A-VI-2006 1, 12B-VI-2006 1, 6A-VIII-2006 3, 24A-VIII-2006 4, 27B-VIII-2006 2, 27C-VIII-2006 1 and 4C-VII-2007 1.
880. *Pima boisduvaliella* (Gn.) (5746. *Pima boisduvaliella* (Gn.)) – 27-VI-2002 2 and 4B-VII-2007 1. Wingspread 18-24 mm. Neunzig (2003) states that *P. boisduvaliella* is a European species that feeds on introduced legume crops.



881. *Pima fulvirugella* (Rag.) (5751. *Pima fulvirugella* (Rag.) and *Pima vividella* McD.) – 8-VI-2001 2, 20-VI-2001 3, 27-VI-2002 5, 25C-VI-2003 3, 12B-VII-2003 3, 18-VII-2004 1, 21-VI-2005 1, 12B-VI-2006 3 and 4C-VII-2007 1. Close to *P. boisduvaliella* (Guenée) but with wingspread 25 mm and above.
885. *Ambesa laetella* (Grt.) (5759. *Ambesa laetella* Grt.) – 18-VII-2004 2.
887. *Catastia actualis* (Hulst) (5764. *Catastia actualis* (Hulst)) – 21-VI-2005 1 and 4D-VII-2007 1.
890. *Meroptera pravella* (Grt.) (5787. *Meroptera pravella* (Grt.)) (Lesser Aspen Webworm) – 27-VI-2002 2, 25C-VI-2003 1, 21-VI-2005 4, 16B-V-2006 1, 12A-VI-2006 2, 12C-VI-2006 2, 4C-VII-2007 1 and 4D-VII-2007 1.
891. *Sciota basilaris* Zell. (5799. *Nephopterix basilaris* Zell.) – 20-VI-2001 1, 27-VI-2002 4 and 12A-VI-2006 1.
893. *Sciota fernaldi* (Rag.) (5792. *Nephopterix fernaldella* (Rag.)) – 25B-VI-2003 1, 18-VII-2004 3 and 4C-VII-2007 1. This may be an undescribed species of *Sciota* according to Dr. H. Neunzig.
896. *Telethusia ovalis* (Pack.) (5812. *Telethusia ovalis* (Pack.)) – 15-VIII-2004 2.
901. *Pyla aenigmatica* Heinr. (5827. *Pyla aenigmatica* Heinr.) – 21-VIII-2002 1 and 18-VII-2004 4.
903. *Pyla fusca* (Haw.) (5829. *Pyla fusca* (Haw.)) (Speckled Black Pyla Moth) – 15-VIII-2004 1, 2A-VIII-2005 1, 2B-VIII-2005 1 and 27A-VIII-2006 2.
904. *Pyla hanhamella* Dyar (5831. *Pyla hanhamella* Dyar) – 27-VI-2002 1. Identified by Dr. George Balogh.

907. *Dioryctria reniculelloides* Mut. & Mun. (5843. *Dioryctria reniculelloides* Mutuura & Mun.) (Spruce Coneworm Moth) - 4B-VII-2007 1.
912. *Sarata caudelella* (Dyar) (5870. *Sarata caudelella* (Dyar)) – 22A-IV-2005 4.
915. *Lipographis fenestrella* (Pack.) (5886. *Lipographis fenestrella* (Pack.)) – 15-VIII-2004 1.
Reported as new to Alberta from this area and from the Lowden Springs Conservation Area in Pohl et al. (2005).
918. *Hulstia undulatella* (Clem.) (5918. *Hulstia undulatella* (Clem.)) (Sugarbeet Crown Borer Moth) – 1/2-IX-2001 (EM), 12-VII-2002 1 and 18-VII-2004 1.
920. *Zophodia grossulariella* Hbn. (5968. *Zophodia convolutella* Hbn. (Gooseberry Fruitworm Moth) – 4-VI-2002 2 and 21B-V-2003 2.



921. *Melitara dentata* (Grt.) (5971. *Melitara dentata* (Grt.)) – 21-VIII-2002 1, 15-VIII-2004 5 and 2A-VIII-2005 2.
924. *Homoeosoma stipiticellum* Grt. (5936. *Homoeosoma stipiticellum* Grt.) – 18-VII-2004 1.
928. *Phycitoides mucidellum* (Rag.) (5946. *Phycitoides mucidellum* (Rag.)) – 8-VIII-2001 2, 10-IX-2002 1, 28A-VIII-2005 1, 27B-VIII-2006 2, 27C-VIII-2006 1 and 4C-VII-2007 1.

Pyralidae, Phycitinae, Anerastiini

930. *Anerastia lotella* (Hbn.) (6038. *Anerastia lotella* (Hbn.)) – 21-VIII-2002 2.

Pyralidae, Phycitinae, Peoriini

933. *Peoria approximella* (Wlk.) (6053. *Peoria approximella* (Wlk.)) (Carmine Snout Moth) – 27-VI-2002 1, 12B-VII-2003 2, 18-VII-2004 4, 15-VIII-2004 3, 21-VI-2005 4, 12B-VI-2006 3, 12C-VI-2006 2, 4C-VII-2007 1 and 4D-VII-2007 2.

CRAMBIDAE – Snout Moths

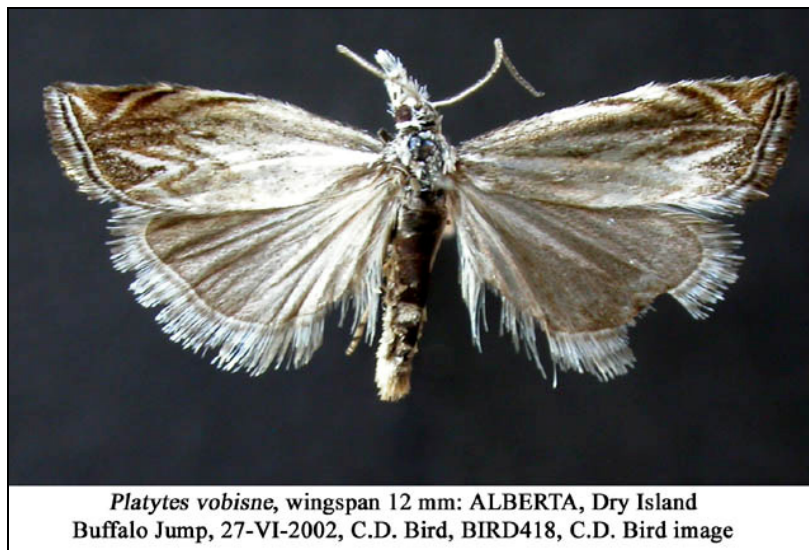
Crambidae, Scopariinae

934. *Gesneria centuriella* (D. & S.) (4703. *Gesneria centuriella* (D. & S.)) – 18-VII-2004 1.

935. *Scoparia biplagiialis* Wlk. (4716. *Scoparia biplagiialis* Wlk.) (Double-striped Scoparia Moth) – 5-VIII-2001 5, 18-VII-2004 1, 2A-VIII-2005 1 and 2B-VIII-2005 2, 2B-VIII-2006 2, 6A-VIII-2006 1 and 4B-VII-2007 1.

Crambidae, Crambinae, Crambini

942. *Euchromius californicalis* (Pack.) (5455. *Euchromius californicalis* (Pack.)) (California Grass-veneer Moth) – 18-VII-2004 1 and 28A-VIII-2005 1.



943. *Platytes vobisne* Dyar (5394. *Platytes vobisne* Dyar) – 27-VI-2002 1. New to Alberta according to Pohl et al. (2005).
946. *Catoptria latiradiellus* (Wlk.) (5408. *Catoptria latiradiella* (Wlk.)) (Three-spotted Crambus Moth) – 27-VI-2002 2, 12B-VII-2003 3, 19-VI-2004 1, 18-VII-2004 7, 15-VIII-2004 1 and 4B-VII-2007 1.
948. *Chrysoteuchia topiarius* (Zell.) (5391. *Chrysoteuchia topiaria* (Zell.)) (Cranberry Girdler or topiary Grass-veneer Moth) – 2-VII-1999 SR, 2-VII-2000 1, 20-VI-2001 14, 27-VI-2002 1, 12-VII-2002 1, 25C-VI-2003 1, 12B-VII-2003 1, 18-VII-2004 2, 21-VI-2005 7, 12-VI-2006 2, 12A-VI-2006 1, 12B-VI-2006 4, 12C-VI-2006 2, 27A-VIII-2006 1, 27B-VIII-2006 1, 27C-VIII-2006 1, 4B-VII-2007 1, 4C-VII-2007 1 and 4D-VII-2007 1.
953. *Crambus perlella* (Scop.) (5343a. *Crambus perlellus innotatellus* Wlk.) (Immaculate Grass-veneer Moth) – 12-VII-2002 2, 21-VIII-2002 1, 12A-VII-2003 1, 18-VII-2004 1, 18-VIII-2004 1 and 2A-VIII-2005 1.
955. *Crambus whitmerellus browni* Klots (5345. *Crambus whitmerellus browni* Klots) – 20-VI-2001 3, 27-VI-2002 5, 25A-VI-2003 1, 25C-VI-2003 1, 12B-VII-2003 1, 21-VI-2005 1, 12-VI-2006 2, 12B-VI-2006 5 and 12C-VI-2006 2.
957. *Crambus trichusalis* (Hulst) (5352. *Crambus trichusalis* (Hulst)) – 28-VIII-2004 2.
959. *Crambus ainsliellus* Klots (5354. *Crambus ainsliellus* Klots) – 27B-VIII-2006 1. The following, 1-IX-2001 2 and 10-IX-2002 7, and probably *C. ainsliellus*, but possibly *C. leachellus*.
967. *Agriphila ruricolellus* (Zell.) (5399. *Agriphila ruricolella* (Zell.)) (Lesser Vagabond Sod Webworm) – 8-VIII-2001 2, 21-VIII-2002 3, 10-IX-2002 1, 18-VII-2004 1 and 2A-VIII-2005 3 and 6C-VIII-2006 2. Listed in earlier reports as *Agriphila plumbifimbriella* (Dyar).

968. *Agriphila vulgivagellus* (Clem.) (5404. *Agriphila vulgivagella* (Clem.)) (Vagabond Crambus Moth or Vagabond Sod Webworm Moth) – 27A-VIII-2006 2, 27B-VIII-2006 3 and 27C-VIII-2006 2.
970. *Neodactria luteolellus* Clem. (5379. *Neodactria luteolella* Clem.) (Mottled Grass-veneer Moth) – 27-VI-2002 1, 18-VII-2004 2.
- Pediasia* spp. – 12-VII-2002 3, 21-VIII-2002 1, 18A-VII-2004 1, 18S-VII-2004 2 and 15-VIII-2004 3. These could be *Pediasia aridella edmontella*, *P. ericellus* or *P. laciniella*.
976. *Pediasia trisecta* (Wlk.) (5413. *Pediasia trisecta* (Wlk.)) (Sod Webworm Moth) – 1/2-IX-2001 (EM), 12-VII-2002 1, 10-IX-2002 3, 15-VIII-2004 2, 28A-VIII-2005 4, 6A-VIII-2006 1, 6C-VIII-2006 1, 27A-VIII-2006 1, 27B-VIII-2006 1 and 27C-VIII-2006 1.



978. *Pediasia ericellus* (B. & McD.) (5415. *Pediasia ericella* (B. & McD.)) – 12-VII-2002 1 (BIRD443), 12B-VII-2003 1, 18A-VII-2004 1 and 15-VIII-2004 1 (BIRD17046).
980. *Pediasia dorsipunctellus* (Kft.) (5417. *Pediasia dorsipunctella* (Kft.)) – 20-VI-2001 1, 8-VIII-2001 5, 10-IX-2002 5, 12B-VII-2003 2, 18-VII-2004 2, 15-VIII-2004 3, 2A-VIII-2005 1, 2B-VIII-2005 1 and 4D-VII-2007 1.
984. *Thaumatopsis fernaldella nortella* Kft. (5441a. *Thaumatopsis fernaldella nortella* Kft.) – 8-VIII-2001 1, 27-VI-2002 2, 12-VII-2002 3, 12A-VII-2003 1, 18-VII-2004 3 and 4D-VII-2007 3.

Crambidae, Acentropinae, Acentropini

987. *Acentria ephemerella* (D. & S.) (5299. *Acentria nivea* (Olivier)) (Water Veneer Moth) – 12-VII-2002 2, 10-IX-2002 3, 15-VIII-2004 2 and 21-VI-2005 1. Reported as new for Alberta from this and other areas in Pohl et al. (2005).

Crambidae, Acentropinae, Argyractini

991. *Petrophila kearfottalis* (B. & McD.) (4773. *Petrophila kearfottalis* (B. & McD.)) – 8-VIII-2001 4, 1-IX-2001 1, 12A-VII-2003 1, 12B-VII-2003 1, 18-VII-2004 1, 2B-VIII-2005 1, 27A-VIII-2006 2 and 27B-VIII-2006 1.

Crambidae, Odontiinae, Eurrhypini

994. *Mimoscinia rufofascialis* (Steph.) (4826. *Mimoschinia rufofascialis* (Steph.)) – 25B-VI-2003 1.

Crambidae, Pyraustinae, Pyraustini

1012. *Perispasta caeculalis* Zell. (4951. *Perispasta caeculialis* Zell.) (Titian Peale's Pyralid Moth) – 20-VI-2001 1, 27-VI-2002 2, 12B-VII-2003 1, 21-VI-2005 1, 12C-VI-2006 1 and 4B-VII-2007 1..
1015. *Anania mysippusalis* (Wlk.) (4957. *Mutuuraia mysippusalis* (Wlk.)) – 18-VII-2004 1 and 21-VI-2005 1.
1018. *Sitochroa chortalis* (Grt.) (4987. *Sitochroa chortalis* (Grt.)) (Sitochroa Moth) – 2-VII-1999 SR, 2-VII-2000 1, 8-VI-2001 1, 20-VI-2001 2, 27-VI-2002 1, 19-VI-2004 1 and 4D-VII-2007 1.
1021. *Loxostege sticticalis* (L.) (5004. *Loxostege sticticalis* (L.)) (Beet Webworm Moth) – 27-VI-2002 1, 12-VII-2002 2, 25A-VI-2003 1, 12B-VII-2003 1, 19-VI-2004 3, 18-VII-2004 2, 15-VIII-2004 2, 21-VI-2005 2, 12-VI-2006 2 and 27B-VIII-2006 1.
1025. *Loxostege cereralis* (Zell.) (5017. *Loxostege cereralis* (Zell.)) (Alfalfa Webworm Moth) – 21-VI-2005 1.
1026. *Pyrausta nicalis* (Grt.) (5032. *Pyrausta nicalis* (Grt.)) – 25C-VI-2003 1, 21-VI-2005 3 and 4D-VII-2007 2.
1027. *Pyrausta signatalis* (Wlk.) (5034. *Pyrausta signatalis* (Wlk.)) (Raspberry Pyrausta Moth) – 20-VI-2001 1, 27-VI-2002 3, 21-VI-2005 2, 12-VI-2006 2, 12A-VI-2006 1, 12C-VI-2006 2 and 4D-VII-2007 1.
1028. *Pyrausta generosa* (G. & R.) (5056. *Pyrausta generosa* (G. & R.)) – 12-VII-2002 1 and 12B-VII-2003 1.
1034. *Pyrausta unifascialis* (Pack.) (5068. *Pyrausta unifascialis* (Pack.)) (Pussytoes Pyrausta Moth) – 20-VI-2001 1, 27-VI-2002 1, 25C-VI-2003 1, 12-VI-2006 1, 4A-VII-2007 1 and 4D-VII-2007 1.
1035. *Pyrausta fodinalis* (Led.) (5074. *Pyrausta fodinalis* (Led.)) – 20/21-VI-2001 (EM), 12B-VII-2003 1, 18-VII-2004 3, 15-VIII-2004 1, 21-VI-2005 1, 2A-VIII-2005 2, 28A-VIII-2005 1, 12-VI-2006 4, 12A-VI-2006 2, 6B-VIII-2006 3 and 4D-VII-2007 2.
1036. *Pyrausta socialis* (Grt.) (5075. *Pyrausta socialis* (Grt.)) - 4B-VII-2007 1 and 4D-VII-2007 1.

Crambidae, Pyraustinae, Spilomelini

1039. *Choristostigma plumbosignalis* (Fern.) (5128. *Choristostigma plumbosignalis* (Fern.)) – 12-VII-2002 1 and 4B-VII-2007 1.
1045. *Udea itysalis* (Wlk.) (5099. *Udea itysalis* (Wlk.)) – 6A-VIII-2006 1.
1047. *Udea radiosalis* (Mösch.) (5101. *Udea radiosalis* (Mösch.)) – 2B-VIII-2005 1.
1052. *Mecyna submedialis* (Grt.) (5135. *Mecyna submedialis* (Grt.)) (Orange-toned Mecyna Moth) – 12-VII-2002 2, 12B-VII-2003 1, 18-VII-2004 4, 2A-VIII-2005 1 and 4A-VII-2007 1.
1053. *Mecyna mustelinalis* (Pack.) (5137. *Mecyna mustelinalis* (Pack.)) – 20-VI-2001 3, 27-VI-2002 1, 12-VII-2002 1, 21-VIII-2002 1, 19-VI-2004 3, 18-VII-2004 4, 15-VIII-2004 1, 21-VI-2005 3, 2A-VIII-2005 1, 12B-VI-2006 1, 4C-VII-2007 1 and 4D-VII-2007 1.
1054. *Nomophila nearctica* Mun. (5156. *Nomophila nearctica* Mun.) (Lucerne Moth, Celery Stalkworm Moth) – 6B-VIII-2006 1.

HESPERIIDAE - Skippers

1056. *Epargyreus clarus* (Cram.) (3870. *Epargyreus clarus* (Cram.)) (Silver-spotted Skipper) – 6-VII-2008 1 and 5-VII-2009 1 SR.

Hesperiidae, Eudaminae

1057. *Thorybes pylades* (Scud.) (3910. *Thorybes pylades* (Scudder)) (Northern Cloudywing) – 7-VII-2002 1 SR and 10-VII-2011 1 SR.

Hesperiidae, Pyrginae, Pyrgini

1065. *Pyrgus communis* (Grt.) (3966. *Pyrgus communis* (Grt.)) (Checkered Skipper) – 2-VII-1999 9 SR, 11-VII-2000 1 SR, 8-VII-2001 5 SR, 7-VII-2002 40 SR, 6-VII-2003 7 SR, 11-VII-2004 1 SR, 10-VII-2005 2 SR, 22-VI-2007 1 SR Nora Bryan, 8-VII-2007 12 SR, 6-VII-2008 7 SR, 5-VII-2009 1 SR, 4-VII-2010 1 SR and 10-VII-2011 11 SR.

Hesperiidae, Hesperinae, Thymelicini

1070. *Oarisma garita* (Reak.) (4007. *Oarisma garita* (Reak.)) (Garita Skipperling) – 2-VII-1999 7 SR, 11-VII-2000 1000+ SR, 8-VII-2001 30 SR, 7-VII-2002 50 SR, 6-VII-2003 1 SR, 11-VII-2004 23 SR and 10-VII-2005 4 SR, 12-VI-2006 6 SR, 9-VII-2006 5 SR, 8-VII-2007 14 SR, 6-VII-2008 17 SR, 5-VII-2009 28 SR, 4-VII-2010 6 SR and 10-VII-2011 9 SR.

Hesperiidae, Hesperinae, Hesperini

1081. *Polites themistocles* (Latr.) (4041. *Polites themistocles* (Latr.)) (Tawny-edged Skipper) – 7-VII-2002 1 SR and 6-VII-2008 1 SR.

1082. *Polites mystic* (Edw.) (4043. *Polites mystic* (Edw.)) (Long Dash Skipper) – 8-VII-2002 1? SR, 7-VII-2002 6 SR, 6-VII-2008 1 SR and 10-VII-2011 1? SR.

1085. *Anatrytone logan* (Edw.) (4051a. *Anatrytone logan lagus* (Layberry et al.)) (Delaware Skipper) – 8-VII-2007 1. The specimen was originally mistaken for *Thymelicus lineola*, the European Skipper.

PAPILIONIDAE - Swallowtails

1089c. *Papilio machaon dodi* McD. (4165a. *Papilio machaon dodi* McD.) (Dod's Old World Swallowtail) – 2-VII-1999 5 SR, 11-VII-2000 20 SR, 8-VII-2001 10 SR, 7-VII-2002 50 SR, 6-VII-2003 1 SR, 11-VII-2004 12 SR, 10-VII-2005 7 SR, 8-VII-2007 2 SR 6-VII-2008 1, 6-VII-2008 2 SR, 5-VII-2009 2 SR and 10-VII-2011 1 SR.

1091. *Papilio canadensis* Roth. & Jord. (4176a. *Papilio glaucus canadensis* (R. & J.)) (Canadian Tiger Swallowtail) – 2-VII-2000 1 SR, 7-VII-2002 3 SR, 6-VII-2003 1 SR and 6-VII-2008 2 SR.

PIERIDAE – White and Sulphur Butterflies

Pieridae, Coliadinae

1095b. *Colias philodice eriphyle* (Edw.) (4209. *Colias philodice* Godt.) (Clouded Sulphur) – 2-VII-000 8 SR, 8-VII-2001 3 SR, 7-VII-2002 12 SR, 10-VII-2005 7 SR, 12-VI-2006 100 SR, 8-VII-2007 3 SR and 6-VII-2008 1 SR, 5-VII-2009 4 SR and 10-VII-2011 6 SR.

1097. *Colias christina* Edw. (4211e. *Colias christina* Edw.) (Christina Sulphur) – 11-VII-1999 1 SR, 7-VII-2002 2 SR and 6-VII-2003 1 SR.

Pieridae, Pierinae, Pierini

1114. *Pieris rapae* (L.) (4197. *Pieris rapae* (L.)) (Cabbage Butterfly) – 8-VII-2001 1 SR, 7-VII-2002 2 SR, 10-VII-2005 1 SR, 9-VII-2006 5 SR, 6-VII-2008 2 SR and 10-VII-2011 4 SR.
- 1116a. *Pontia occidentalis occidentalis* (Reak.) (4194. *Pieris occidentalis* (Reak.)) (Western Checkered White) – 2-VII-1999 4 SR, 2-VII-2000 8 SR, 8-VII-2001 1 SR, 7-VII-2002 32 SR, 10-VII-2005 14 SR, 9-VII-2006 30 SR and 8-VII-2007 1 SR.

LYCAENIDAE – Blue and Copper Butterflies

Lycaenidae, Lycaenini

1127. *Lycaena helloides* (Bdv.) 4262. *Lycaena helloides* (Bdv.) (Purplish Copper) – 7-VII-2002 1 SR and 5-VI-2009 1 SR.

Lycaenidae, Theclinae, Eumaeini

1132. *Satyrrium titus immaculosus* (Comstock) (4275. *Harkenclenus titus* (F.)) (Coral Hairstreak) – 8-VII-2001 1 SR, 7-VII-2002 1 SR, 11-VII-2004 3 SR and 10-VII-2005 1 SR.

Lycaenidae, Polyommatae, Polyommataini

1142. *Cupido amyntula albrighti* (Clench) (4362. *Everes amyntula* (Bdv.)) (Western Tailed Blue) – 2-VII-2000 1 SR, 8-VII-2001 6 SR, 7-VII-2002 2 SR, 9-VII-2006 1 SR, 8-VII-2007 1 SR, 6-VII-2008 1 SR, 4-VII-2010 4 SR and 10-VII-2011 4 SR.
1143. *Celastrina lucia* (Kby.) (4363. *Celastrina ladon* (Cram.)) (Spring Azure) – 2-V-2004 SR GP. Observed on the “Dry Island” by Greg Pohl.
1148. *Glaucopsyche lygdamus afra* (Edw.) (4372a. *Glaucopsyche lygdamus couperi* Grt.) (Silvery Blue) – 8-VII-2001 3 SR, 7-VII-2002 16 SR, 6-VII-2003 2 SR, 8-VII-2007 1 SR, 6-VII-2008 7 SR, 5-VII-2009 5 SR, 4-VII-2010 4 SR and 10-VII-2011 1 SR.
1150. *Plebejus melissa* (Edw.) (4375. *Lycaeides melissa* (Edw.)) (Melissa Blue) – 11-VII-1999 2 SR, 8-VII-2001 1 SR, 7-VII-2002 22 SR, 10-VII-2005 1 SR, 12-VI-2006 3, 8-VII-2007 2 SR and 10-VII-2011 2 SR.
1151. *Aricia saepiolus amica* (Edw.) (4376. *Plebejus saepiolus* (Bdv.)) (Greenish Blue) – 2-VII-2000 3 SR, 7-VII-2002 3 SR, 6-VII-2003 2 SR, 11-VII-2004 1 SR, 12-VI-2006 3, 8-VII-2007 3 SR, 6-VII-2008 14 SR, 5-VII-2009 15 SR and 10-VII-2011 9 SR.
1153. *Aricia shasta minnehaha* (Scud.) (4379. *Icaricia shasta* (Edw.)) (Shasta Blue) – 2-VII-2000 2 SR, 8-VII-2001 1 SR, 7-VII-2002 4 SR, 10-VII-2005 3 SR, 12-VI-2006 1, 8-VII-2007 1 SR, 6-VII-2008 1 SR, 5-VII-2009 4 SR and 10-VII-2011 1 SR.
1154. *Aricia lupini* (Bdv.) 4380. *Icaricia acmon* (Westwood & Hewitson) (Acmon Blue) – 11-VII-1999 2 SR and 7-VII-2002 3 SR. These are probably misidentifications of *Aricia shasta minnehaha*. Worn specimens are difficult to identify.
- 1156c. *Agriades glandon rustica* (Edw.) (4384d. *Plebejus rusticus rusticus* (Edw.)) (Rustic or Arctic Blue) – 12-VI-2006 1.

NYMPHALIDAE - Fritillaries

Nymphalidae, Danainae, Danaini

1157. *Danaus plexippus* (L.) (4614. *Danaus plexippus* (L.)) (Monarch) – 22-VI-2007 3 SR Nora Bryan.

Nymphalidae, Limenitidinae, Limenitidini

1158. *Limenitis arthemis rubrofasciata* (B. & McD.) (4522. *Basilarchia arthemis* (Drury)) (White Admiral) – 11-VII-1999 2 SR, 2-VII-2000 5 SR, 8-VII-2001 15 SR, 7-VII-2002 5 SR, 11-VII-2004 3 SR, 10-VII-2005 2 SR, 9-VII-2006 3 SR, 8-VII-2007 1 SR and 6-VII-2008 9 SR, 5-VII-2009 6 SR and 4-VII-2010 1 SR.

Nymphalidae, Heliconiinae, Argynnini

1162. *Euptoieta claudia* (Cram. (4447. *Euptoieta claudia* (Cram.)) (Variegated Fritillary) - 8-VII-2007 1 SR.
1174. *Speyeria cybele pseudocarpenteri* (Edw.) (4450c. *Speyeria cybele pseudocarpenteri* (Edw.)) (Great Spangled Fritillary) – 8-VII-2001 4 SR and 7-VII-2002 2 SR.
- 1176b. *Speyeria aphrodite manitoba* (Cherm. & Cherm.) (4451. *Speyeria aphrodite* (F.)) (Aphrodite Fritillary) – 11-VII-1999 1 SR, 2-VII-2000 30 SR, 8-VII-2001 2 SR, 7-VII-2002 2 SR, 11-VII-2004 1 SR, 8-VII-2007 10 SR, 6-VII-2008 3 SR and 5-VII-2009 2 SR.
1179. *Speyeria callippe calgariana* (McD.) (4457. *Speyeria callippe* (Bdv.)) – 16 VII-2006 1.
- 1182c. *Speyeria hesperis dennisii* dos Passos (4459s. *Speyeria atlantis lais* (Edw.)) (Northwestern Fritillary) – 2-VII-2000 SR, 8-VII-2001 6 SR, 7-VII-2002 30 SR, 6-VII-2003 7 SR, 11-VII-2004 4 SR, 10-VII-2005 6 SR, 8-VII-2007 5 SR, 6-VII-2008 6 SR, 5-VII-2009 5 SR, 4-VII-2010 1 SR and 10-VII-2011 4 SR.

Nymphalidae, Nymphalinae, Nymphalini

1186. *Vanessa cardui* (L.) (4435. *Vanessa cardui* (L.)) – 10-VII-2005 8 SR. Migrants from the south.
1188. *Vanessa atalanta rubria* (Fruh.) (4437. *Vanessa atalanta* (L.)) (Red Admiral) – 8-VII-2001 1 SR and 7-VII-2002 2 SR.
- 1194a. *Polygonia satyrus satyrus* Edw. (4422. *Polygonia satyrus* (Edw.)) (Satyr Anglewing) – 16-VII-2006 1 SR.
1197. *Polygonia gracilis* (G. & R.) (4427. *Polygonia gracilis* (G. & R.)) (Hoary Comma) – 8-VII-2001 1 SR.

Nymphalidae, Nymphalinae, Melitaeini

1204. *Chlosyne acastus* (Edw.) (4493. *Chlosyne acastus* (Edw.)) (Acastus Checkerspot) – 22-VI-2007 1 SR Nora Bryan, 8-VII-2007 2 SR and 6-VII-2008 11 SR.
1208. *Phyciodes cocyta* (Cram.) (4481.1. *Phyciodes cocyta* (Cram.)) (Northern Pearl Crescent) – 11-VII-1999 3 SR, 2-VII-2000 1, 8-VII-2001 1 SR, 7-VII-2002 6 SR, 11-VII-2004 1 SR, 10-VII-2005 8 SR, 8-VII-2007 7 SR 6-VII-2008 4 SR, 5-VII-2009 15 SR, 4-VII-2010 4 SR and 10-VII-2011 8 SR.
1209. *Phyciodes batesii saskatchewan* Scott (4482. *Phyciodes batesii* (Reak.)) (Tawny Crescent) – 11-VII-1999 1 SR, 2-VII-2000 2 SR, 8-VII-2001 6 SR, 7-VII-2002 4 SR, 6-VII-2003 1 SR, 11-

VII-2004 5 SR, 10-VII-2005 3 SR, 12-VI-2006 1, 8-VII-2007 9 SR 6-VII-2008 21 SR, 5-VII-2009 1 SR and 4-VII-2010 1 SR.

SATYRIDAE – Browns and Alpines

Satyridae, Satyrinae, Satyrini

- 1213a. *Coenonympha inornata benjamini* McD. (4583b. *Coenonympha inornata benjamini* McD.) (Inornate Ringlet) – 11-VII-1999 7 SR, 11-VII-2000 10 SR, 8-VII-2001 10 SR, 7-VII-2002 45 SR, 6-VII-2003 4 SR, 10-VII-2005 10 SR, 8-VII-2007 13 SR, 6-VII-2008 16 SR, 5-VII-2009 33 SR, 4-VII-2010 4 SR and 10-VII-2011 7 SR.
1214. *Cercyonis pegala ino* Hall (4587. *Cercyonis pegala* (F.)) (Common Wood Nymph or Meadow Brown) – 9-VII-2006 10 SR and 8-VII-2007 18 SR.
1218. *Erebia epipsodea* Butler (4599. *Erebia epipsodea* Butler) (Common Alpine) – 2-VII-2000 1 SR and 10-VII-2005 5 SR.
1219. *Erebia discoidalis* (Kby.) (4596. *Erebia discoidalis* (Kby.)) (Red-disked Alpine) – 2-V-2004 SR GP. Observed by Greg Pohl.

DREPANIDAE – Lutestrings and Hooktips

Drepanidae, Thyatirinae, Macrothyatirini

1233. *Euthyatira pudens* (Gn.) (6240. *Euthyatira pudens* (Gn.)) (Dogwood Thyatira) - 30A-V-2007 1.

Drepanidae, Thyatirinae, Ceranemotini

1234. *Ceranemota albertae* Clarke (6248. *Ceranemota albertae* Clarke) (Alberta Lutestring) – 1-IX-2001 1, 28N-VIII-2004 2 (5 SR), 28S-VIII-2004 2 SR and 28A-VIII-2005 3 and 27A-VIII-2006 1.

Drepanidae, Drepaninae, Drepanini

1237. *Drepana bilineata* (Pack.) (6252. *Drepana bilineata* (Pack.)) (Two-lined Hooktip) – 12B-VII-2003 2.

Drepanidae, Drepaninae, Oretini

1239. *Oreta rosea* (Wlk.) (6255. *Oreta rosea* (Wlk.)) (Rose Hooktip) - 4B-VII-2007 1.

GEOMETRIDAE – Inchworm or Geometrid Moths

Geometridae, Larentiinae, Cidariini

1241. *Dysstroma citrata* (L.) (7182. *Dysstroma citrata* (L.)) (Dark Marbled Carpet) – 28A-VIII-2005 1 and 6A-VIII-2006 1.
1247. *Dysstroma hersiliata* (Gn.) (7189. *Dysstroma hersiliata* (Gn.)) (Orange-barred Carpet) – 20-VI-2001 1, 18-VII-2004 1 and 4B-VII-2007 1.

1250. *Dysstroma brunneata* (Pack.) (7194. *Dysstroma brunneata* (Pack.)) (Handsome Carpet) - 4C-VII-2007 1.
1252. *Eulithis propulsata* (Wlk.) (7199. *Eulithis propulsata* (Wlk.)) – (Barred Yellow or Currant Eulithis) – 18-VII-2004 1.
1257. *Eulithis xyliana* (Hulst) (7207. *Eulithis xyliana* (Hulst)) (The Phoenix) – 18-VII-2004 3, 4B-VII-2007 1 and 4D-VII-2007 1.
1264. *Thera otisi* (Dyar) (7219. *Thera otisi* (Dyar)) (Dyar's Carpet) – 8-VIII-2001 EM, 10-IX-2002 1, 15-VIII-2004 6, 28-VIII-2004 2, 24-IX-2004 1, 2B-VIII-2005 1, 28A-VIII-2005 6, 6A-VIII-2006 2, 6B-VIII-2006 1 and 27B-VIII-2006 2.

Geometridae, Larentiinae, Hydriomenini

1271. *Hydriomena ruberata* (Frey) (7254. *Hydriomena ruberata* (Frey.)) – 19-VI-2004 1.
1273. *Hydriomena furcata* (Thunb.) (7257. *Hydriomena furcata* (Thunb.)) – 2B-VIII-2005 2.
1283. *Mesoleuca ruficillata* (Gn.) (7307. *Mesoleuca ruficillata* (Gn.)) (Red-fringed Carpet) – 27-V-2004 1.
1287. *Perizoma basaliata* (Wlk.) (7316. *Perizoma basaliata* (Wlk.)) (Twin-spot Wave) – 12A-VI-2006 1.
1289. *Perizoma custodiata* (Gn.) (7328. *Perizoma custodiata* (Gn.)) – 8-VI-2001 4, 4-VI-2002 2, 25C-VI-2003 1, 21-VI-2005 2, 16A-V-2006 1, 12B-VI-2006 1, 6B-VIII-2006 1, 27A-VIII-2006 1, 27B-VIII-2006 1 and 27C-VIII-2006 1.

Geometridae, Larentiinae, Xanthorhoini

1295. *Xanthorhoe abrasaria* (H.-S.) (7370. *Xanthorhoe abrasaria* (H.-S.)) – 18-VII-2004 1.
1308. *Epirrhoe alternata* (Müller) (7394. *Epirrhoe alternata* (Müller)) – 21-VI-2005 1, 12A-VI-2006 1 and 12C-VI-2006 1.
1312. *Zenophleps alpinata* Cass. (7408. *Zenophleps alpinata* Cass.) – 10-IX-2002 1, 15-VIII-2004 1, 28N-VIII-2004 1 (4 SR), 2B-VIII-2005 2, 28A-VIII-2005 1, 6A-VIII-2006 1, 27A-VIII-2006 1 and 27B-VIII-2006 1.

Geometridae, Larentiinae, Eudelini

1325. *Eubaphe mendica* (Wlk.) (7440. *Eubaphe mendica* (Wlk.)) (The Beggar) – 12-VII-2002 1 and 4B-VII-2007 1.

Geometridae, Larentiinae, Eupitheciini

1326. *Horisme intestinata* (Gn.) (7445. *Horisme intestinata* (Gn.)) (Many-lined Pug) – 20-VI-2001 2 and 4B-VII-2007 2.
1327. *Horisme incana* Swett (7446. *Horisme incana* Swett) – 20-VI-2001 2, 27-VI-2002 1, 12-VII-2002 1, 25C-VI-2003 2, 16B-V-2006 1, 12-VI-2006 1, 12B-VI-2006 1, 12C-VI-2006 1, 30A-V-2007 1, 30B-V-2007 1, 4D-VII-2007 1, 30A-V-2007 2, 30B-V-2007 1, 4B-VII-2007 1 and 4D-VII-2007 1.
1330. *Eupithecia palpata* Pack. group (7449. *Eupithecia palpata* Pack. group) – 12B-VI-2006 1.
1336. *Eupithecia subfuscata* (Haw.) (7487. *Eupithecia subfuscata* (Haw.)) – 20-VI-2001 1, 27-VI-2002 1 and 19-VI-2004 1.
1341. *Eupithecia mutata* Pears. (7575. *Eupithecia mutata* Pears.) – 20-VI-2001 1 and 19-VI-2004 1.

1346. *Eupithecia ravocostaliata* Pack. (7605. *Eupithecia ravocostaliata*) Pack. (Great Variegated Pug) – 16B-V-2006 1.
1351. *Eupithecia interruptofasciata* Pack. (7551a. *Eupithecia interruptofasciata* Pack.) – 1-IX-2001 2, 10-IX-2002 1, 24-IX-2004, 28A-VIII-2005 6, 27A-VIII-2006 3, 27B-VIII-2006 1 and 27C-VIII-2006 1.
1357. *Eupithecia nimbicolor* (Hulst) (7522. *Eupithecia nimbicolor* (Hulst)) – 8-VI-2001 1 and 12A-VI-2006 1.
1363. *Eupithecia cimicifugata* Pears. (7524. *Eupithecia cimicifugata* Pears.) – 21-VI-2005 1.
1365. *Eupithecia multistrigata* (Hulst) (7539. *Eupithecia multistrigata* (Hulst)) – 10-IX-2002 1.
1367. *Eupithecia lachrymosa* (Hulst) (7548. *Eupithecia lachrymosa* (Hulst)) – 20-VI-2001 1, 19-VI-2004 1 and 21-VI-2005.
1370. *Eupithecia regina* Tayl. (7483. *Eupithecia regina* Tayl.) – 20-VI-2001 2, 21-VI-2005 1, 12A-VI-2006 2 and 12C-VI-2006 1.

Geometridae, Larentiinae, Lobophorini

1376. *Lobophora nivigerata* Wlk. (7640. *Lobophora nivigerata* Wlk.) (Two-lined Aspen Looper) – 25C-VI-2003 1 and 4B-VII-2007 1.

Geometridae, Sterrhinae, Sterrhini

1379. *Idaea rotundopennata* (Pack.) (7125. *Idaea rotundopennata* (Pack.)) (Round-winged Wave) – 19-VI-2004 3.

Geometridae, Sterrhinae, Cosymbiini

1380. *Cyclophora pendulinaria* (Gn.) (7139. *Cyclophora pendulinaria* (Gn.)) (Pearly-gray Wave or Sweetfern Geometer) - 4C-VII-2007 1.

Geometridae, Sterrhinae, Scopulini

1383. *Scopula limboundata* (Haw.) (7159. *Scopula limboundata* (Haw.)) (Large Lace-border) – 18-VII-2004 2.
1386. *Scopula junctaria* (Wlk.) (7164. *Scopula junctaria* (Wlk.)) (United Wave) – 12-VII-2002 2 and 18-VII-2004 2.
1388. *Scopula frigidaria* (Mösch.) (7166. *Scopula frigidaria* Mösch.) (Frigid Wave) – 12B-VII-2003 1 and 19-VI-2004 1.
1390. *Scopula inductata* (Gn.) (7169. *Scopula inductata* (Gn.)) (Soft-lined Wave) – 27-VI-2002 2, 12B-VII-2003 1, 18-VII-2004 1, 21-VI-2005 2, 12C-VI-2006 1, 27A-VIII-2006 1, 27B-VIII-2006 1, 27C-VIII-2006 1, 4B-VII-2007 1 and 4D-VII-2007 1 .
1392. *Scopula sentinaria* (Gey.) (7172. *Scopula sentinaria* (Gey.)) – 2-VII-2000 1 and 12-VI-2006 1.
1393. *Leptostales ferruminaria* (Zell.) (7180. *Leptostales ferruminaria* (Zell.)) – 4-VI-2002 1.

Geometridae, Geometrinae, Nemoriini

1394. *Nemoria unitaria* (Pack.) (7018. *Nemoria unitaria* (Pack.)) – 13-VII-2002 1 and 4B-VII-2007 1.

Geometridae, Geometrinae, Synchlorigini

1399. *Synchlora aerata* (F.) (7058. *Synchlora aerata* (F.)) (Wavy lined Emerald) – 12-VII-2002 6, 27C-VIII-2006 2, 4B-VII-2007 1 and 4D-VII-2007 1.
 1400. *Synchlora bistrifaria* (Pack.) (7065. *Chaetoscelis bistrifaria* (Pack.)) (Red-fringed Emerald) - 12B-VII-2003 1 and 18-VII-2004 2.

Geometridae, Ennomiinae, Cassymini

1406. *Protitame virginalis* (Hulst) (6270. *Protitame virginalis* (Hulst)) (Virgin Moth) – 20-VI-2001 1, 19-VI-2004 3, 18-VII- 2004 2, 21-VI-2005 3, 12-VI-2006 1 and 4B-VII-2007 1.

Geometridae, Ennomiinae, Macariini

1408. *Eumacaria madopata* (Gn.) (6272. *Eumacaria latiferrugata* (Wlk.)) (Brown-bordered Geometer) – 2-VII-1999 SR and 8-VI-2001 1.
 1414. *Speranza bitactata* (Wlk.) (6304. *Itame bitactata* (Wlk.)) – 20/21-VI-2001 (EM), 15-VIII-2004 2 and 2B-VIII-2005 2.
 1416. *Speranza occiduaria* (Pack.) (6279. *Itame occiduaria* (Pack.)) (Western Sulphur) – 18-VII-2004 1, 21-VI-2005 1 and 2B-VIII-2005 1.
 1421. *Speranza loricaria* (Hulst) (6290. *Itame loricaria* (Evers.)) (False Bruce Spanworm) – 18-VII-2004 2, 12A-VI-2006 1, 12C-VI-2006 1 and 4B-VII-2007 1.
 1429. *Macaria signaria* (Hbn. (6344. *Semiothisa signaria* (Hbn.)) (Pale-marked Angle) – 19-VI-2004 3, 21-VI-2005 3 and 30C-V-2007 1.
 1431. *Digrammia californiaria* (Pack.) (6380. *Semiothisa californiaria* Pack.) – 19-VI-2004 1, 27B-VIII-2006 2 and 27C-VIII-2006 1.
 1433. *Digrammia denticulata* Grt. (6373. *Semiothisa denticulata* Grt.) (Striped Granite) - 8-VI-2001 2, 4-VI-2002 2, 27-VI-2002 1, 10-IX-2002 2, 25B-VI-2003 1, 25C-VI-2003 2, 18-VII-2004 1, 21-VI-2005 2 and 4B-VII-2007 1.
 1436. *Digrammia rippertaria* (Dup.) (6394. *Semiothisa hebetata* (Hulst.)) – 20/21-VI-2001 (EM).
 1440. *Digrammia neptaria* (Gn.) (6396. *Semiothisa neptaria* (Gn.)) – 4-VI-2002 3, 27-VI-2002 1, 10-IX-2002 1 and 4C-VII-2007 1.

Geometridae, Ennomiinae, Boarmiini

1445. *Hesperumia sulphuraria* Pack. (6431. *Hesperumia sulphuraria* Pack.) (Sulphur Moth) – 18-VII-2004 3 and 4B-VII-2007 1.
 1456. *Protoboarmia porcelaria* (Gn.) (6598. *Protoboarmia porcelaria* (Gn.)) (Speckled Carpet) – 18-VII-2004 1.

Geometridae, Ennomiinae, Bistonini

1460. *Biston betularia* (L.) (6640. *Biston betularia* (L.)) (Salt and Pepper Moth) – 20-VI-2001 1, 4B-VII-2007 1 and 4C-VII-2007 1.
 1463. *Hypagyrtis unipunctata* (Haw. (6654. *Hypagyrtis unipunctata* (Haw.)) (One-spotted Variant) – 20/21-VI-2001 (EM) and 12-VII-2002 1.

Geometridae, Ennomiinae, Baptini

1468. *Lomographa semiclarata* (Wlk.) (6666. *Lomographa semiclarata* (Wlk.)) (Bluish Spring Moth) – 8-VI-2001 1, 16A-V-2006 1 and 16V-2006 2.

Geometridae, Ennomiinae, Caberini

1472. *Cabera erythemaria* Gn. (6677. *Cabera erythemaria* Gn.) (Yellow-dusted Cream Moth) – 27-VI-2002 2, 12-VII-2002 2, 21-VI-2005 1 and 4B-VII-2007 1.

1473. *Cabera variolaria* Gn. (6678. *Cabera variolaria* Gn.) (The Vestal or The Pink-striped Spanworm Moth) – 20-VI-2001 2, 12-VII-2002 2 and 21-VI-2005 1.

Geometridae, Ennomiinae, Angeronini

1480. *Aspitates abberata* (Hy. Edw.) (6715. *Aspitates aberratus* (Hy. Edw.)) – 2-VII-1999 SR, 2-VII-2000 2, 8-VI-2001 3, 20-VI-2001 2, 4-VI-2002 1, 27-VI-2002 1, 25A-VI-2003 2, 25B-VI-2003 1, 25C-VI-2003 1, 12B-VII-2003 1, 19-VI-2004 1, 18-VII-2004 1, 12A-VI-2006 1, 12B-VI-2006 1, 12C-VI-2006 1 and 4B-VII-2007 1.

1482. *Euchlaena obtusaria* (Hbn.) (6726. *Euchlaena obtusaria* (Hbn.)) (Obtuse Euchlaena) – 12-VII-2002 1 and 12A-VI-2006 1.

1483. *Euchlaena johnsonaria* (Fitch) (6729. *Euchlaena johnsonaria* (Fitch)) (Johnson's Euchlaena) – 12-VII-2002 2, 12B-VII-2003 1, 18-VII-2004 1, 4B-VII-2007 1, 4C-VII-2007 1 and 4D-VII-2007 2.

1484. *Euchlaena madusaria* (Wlk.) (6731. *Euchlaena madusaria* (Wlk.)) – 12B-VII-2003 1, 19-VI-2004 1, 18-VII-2004 1, 21-VI-2005 1, 30A-V-2007 1, 30C-V-2007 1, 4B-VII-2007 1, 4C-VII-2007 1 and 4D-VII-2007 1.

1485. *Euchlaena marginaria* (Minot) (6734. *Euchlaena marginaria* (Minot)) (Alberta Thorn) – 8-VI-2001 1 and 16B-V-2006 1.

1486. *Euchlaena tigrinaria* (Gn.) (6737. *Euchlaena tigrinaria* (Gn.)) (Variable Thorn or Mottled Euchlaena) – 20/21-VI-2001 (EM), 12A-VI-2006 1, 4B-VII-2007 1 and 4C-VII-2007 1.

1487. *Xanthotype urticaria* Swett (6740. *Xanthotype urticaria* Swett) - 26B-VI-2007 1 and 26C-VI-2007 1.

1488. *Xanthotype sospeta* (Drury) (6743. *Xanthotype sospeta* (Drury)) – 21-VI-2005 1, 4B-VII-2007 1 and 4C-VII-2007 1.

Geometridae, Ennomiinae, Azelini

1490. *Pero morrisonaria* (Hy. Edw.) (6755. *Pero morrisonaria* (Hy. Edw.)) (Lesser Umber or Morrison's Pero) – 20-VI-2001 1, 4-VI-2002 1, 27-VI-2002 1, 19-VI-2004 3, 12A-VI-2006 1, 4B-VII-2007 1 and 4D-VII-2007 1.

Geometridae, Ennomiinae, Campaeini

1494. *Campaea perlata* (Gn.) (6796. *Campaea perlata* (Gn.)) (Pale Beauty or Fringed Looper Moth) - 4B-VII-2007 1 and 4C-VII-2007 1.

Geometridae, Ennomiinae, Ennomini

1495. *Ennomos magnaria* Gn. (6797. *Ennomos magnaria* Gn.) (Maple Spanworm Moth) – 1-IX-2001 1, 10-IX-2002 1 and 24-IX-2004 1.

Geometridae, Ennomiinae, Anagogini

1503. *Metanema inatomaria* Gn. (6819. *Metanema inatomaria* Gn.) ((Pale Metanema) – 20-VI-2001 1 and 4B-VII-2007 1.
1504. *Metanema determinata* (Wlk.) (6820. *Metanema determinata* (Wlk.)) (Dark-banded Thorn) – 20-VI-2001 1 and 4B-VII-2007 1.
1506. *Metarranthis duaria* (Gn.) (6822. *Metarranthis duaria* (Gn.)) (Canadian Thorn or Ruddy Metarranthis) – 4-VI-2002 1, 16B-V-2006 1, 30A-V-2007 1, 30B-V-2007 1 and 30C-V-2007 1.
1507. *Probole alienaria* (H.-S.) (6837. *Probole alienaria* (H.-S.)) – 20VI-2001 1, 19-VI-2004 1 and 30A-V-2007 1.
1508. *Probole amicaria* (H.-S.) (6838. *Probole amicaria* (H.-S.)) (Sharp-toothed Thorn or Friendly Probole) – 18-VII-2004 1.
1509. *Plagodis pulveraria* (L.) (6836. *Anagoga occiduaria* (Wlk.)) (American Barred Umber) - 30A-V-2007 1, 30B-V-2007 1 and 30C-V-2007 1.
1510. *Plagodis phlogosaria* (Gn.) (6842. *Plagodis phlogosaria* (Gn.)) (Straight-lined Plagodis) – 16B-V-2006 1.

Geometridae, Ennomiinae, Ourapterygini

1513. *Caripeta divisata* (Wlk.) (6863. *Caripeta divisata* (Wlk.)) (Gray Spruce Looper) - 4B-VII-2007 1.
1522. *Sicya macularia* (Harr.) (6912. *Sicya macularia* (Harr.)) (Pink-bordered Yellow) – 18-VII-2004 1.
1523. *Plataea trilinearia* (Pack.) (6926. *Plataea trilinearia* (Pack.)) (Sagebrush Girdle) – 8-VI-2001 8, 20-VI-2001 2, 27-VI-2002 1, 12-VII-2002 1, 12B-VII-2003 1, 18-VII-2004 1, 21-VI-2005 2, 12A-VI-2006 1, 12B-VI-2006 1, 12C-VI-2006 1 and 4D-VII-2007 1..
1531. *Prochoerodes lineola* (Göze) (6982. *Prochoerodes transversata* (Drury)) (Large Maple Spanworm Moth) – 10-IX-2002 2, 15-VIII-2004 3 and 6A-VIII-2006 1.

LASIOCAMPIDAE – Tent Caterpillar or Lappet Moths**Lasiocampidae, Lasiocampinae, Gastropachini**

1536. *Phyllodesma americana* (Harr.) (7687. *Phyllodesma americana* (Harr.)) (Lappet Moth) – 17-VI-2002 1, 21A-V-2003 1, 12A-VI-2006 1, 30A-V-2007 1 and 30B-V-2007 1.

Lasiocampidae, Lasiocampinae, Lasiocampini

1537. *Malacosoma disstria* Hbn. (7698. *Malacosoma disstria* Hbn.) (Forest Tent Caterpillar) – 12-VII-2002 1, 12B-VII-2003 1, 18-VII-2004 1 and 4B-VII-2007 1.
1538. *Malacosoma californica* (Pack.) (7702. *Malacosoma californicum* (Pack.)) (Western Tent Caterpillar) – 18-VII-2004 1, 4C-VII-2007 1 and 4D-VII-2007 2.

SATURNIDAE – Giant Silk Moths**Saturniidae, Saturniinae, Saturniini**

1542. *Antheraea polyphemus* (Cram.) (7757. *Antheraea polyphemus* (Cram.)) (Polyphemus Moth) – 8/9-VI-2001 (EM).

SPHINGIDAE – Sphinx Moths

Sphingidae, Sphinginae, Sphingini

1548. *Sphinx vashti* Stkr. (7803. *Sphinx vashti* Stkr.) (Vashti or Snowberry Sphinx) – 20-VI-2001 1, 4-VI-2002 10 SR, 27-VI-2002 1, 25B-VI-2003 1, 19-VI-2004 1 and 30C-V-2007 1.
1551. *Sphinx drupiferarum* J.E. Sm. (7812. *Sphinx drupiferarum* J. E. Smith) (Wild Cherry Sphinx) – 27-VI-2002 1. Seldom encountered in Alberta. Known from Red Deer (1916) and Tolman Bridge (Gary Anweiler, 14/15-VI-2002). Similar to *Smerinthis cerisyi* but darker and larger (the wingspan on the above specimen being 92 mm).

Sphingidae, Smerinthinae, Smerinthini

1553. *Smerinthus jamaicensis* (Drury) (7821. *Smerinthus jamaicensis* (Drury)) (Twin-spot Sphinx) – 20-VI-2001 1, 12-VII-2002 2 SR and 12C-VI-2006 2.
1554. *Smerinthus cerisyi* Kby. (7822. *Smerinthus cerisyi* Kby.) (One-eyed Sphinx) – 20-VI-2001 1, 4-VI-2002 15 SR, 12-VII-2002 10 SR, 19-VI-2004 1, 30A-V-2007 1, 4B-VII-2007 2 and 4D-VII-2007 1.
1556. *Paonias excaecata* (J.E. Sm.) (7824. *Paonias excaecatus* (J. E. Smith)) (Blinded Sphinx) – 8/9-VI-2001 (EM), 27-VI-2002 1, 12-VII-2002 1 SR, 12A-VI-2006 1, 12B-VI-2006 1, 4B-VII-2007 1 and 4D-VII-2007 1.
1557. *Paonias myops* (J.E. Sm.) (7825. *Paonias myops* (J. E. Smith)) (Small-eyed Sphinx) – 8/9-VI-2001 (EM), 12-VII-2002 2 SR, 25C-VI-2003 1, 12C-VI-2006 1, 30C-V-2007 1, 4B-VII-2007 1, 4C-VII-2007 1 and 4D-VII-2007 1.
1558. *Pachysphinx modesta* (Harr.) (7828. *Pachysphinx modesta* (Harr.)) (Large Poplar Sphinx) – 8/9-VI-2001 (EM).

Sphingidae, Macroglossinae, Macroglossini

1570. *Hyles gallii* (Rott.) (7893. *Hyles gallii* (Rottemburg)) (Galium Sphinx or Bedtraw Hawkmoth) – 25C-VI-2003 1, 21-VI-2005 1, 12C-VI-2006 1 and 4C-VII-2007 1.

NOTODONTIDAE – Prominent Moths

Notodontidae, Pygaerinae

1572. *Clostera albosigma* Fitch (7895. *Clostera albosigma* Fitch) (Sigmoid Prominent or Rusty-lined Leaf-tier Moth) – 8-VIII-2001 1, 22B-IV-2005 1 and 30A-V-2007 1.
1575. *Clostera apicalis* (Wlk.) (7901. *Clostera apicalis* (Wlk.)) (Common Chocolate-tip or Red-marked Tentmaker Moth) – 4-VI-2002 2, 12-VI-2002 1 and 21A-V-2003 1.
1578. *Clostera strigosa* (Grt.) (7898. *Clostera strigosa* (Grt.)) (Striped Chocolate-tip) – 27-VI-2002 1.

Notodontidae, Notodontinae, Notodontini

1576. *Pheosia rimosa* Pack. (7922. *Pheosia rimosa* Pack.) (Black-rimmed Prominent) – 18-VII-2004 1.
1577. *Odontosia elegans* (Stkr.) (7924. *Odontosia elegans* (Stkr.)) (Elegant Prominent) – 20/21-VI-2001 (EM) and 12-VII-2002 1.
1578. *Notodonta scitipennis* (Wlk.) (7926. *Notodonta scitipennis* Wlk.) (Base-streaked Prominent) – 20/21-VI-2001 (EM) and 18-VII-2004 1.
1579. *Notodonta torva* Hbn. (7928. *Notodonta simplaria* Graef – 21-VI-2005 2 and 12C-VI-2006 1.

Notodontidae, Notodontinae, Dicranurini

1580. *Gluphisia septentrionis* (Wlk.) (7931. *Gluphisia septentrionis* (Wlk.)) (Small Pebble) – 8-VI-2001 1, 20-VI-2001 2, 27-VI-2002 1, 12-VII-2002 1 SR, 16B-V-2006 1, 12A-VI-2006 1, 4C-VII-2007 1 and 4D-VII-2007 1.
1582. *Gluphisia lintneri* (Grt.) (7934. *Gluphisia lintneri* (Grt.)) – 22B-IV-2005 1.
1585. *Furcula occidentalis* (Lint.) (7939. *Furcula occidentalis* (Lint.)) (Willow Kitten) – 12B-VII-2003 1.
1587. *Furcula modesta* (Huds.) (7941. *Furcula modesta* (Huds.)) (Modest Kitten) – 4-VI-2002 1 and 4C-VII-2007 1.

Notodontidae, Phalerinae

1589. *Nadata gibbosa* (J.E. Sm.) (7915. *Nadata gibbosa* (J. E. Smith)) (White-dotted Prominent or Yellow-lined Caterpillar Moth) – 27-VI-2002 1, 12-VII-2002 1, 19-VI-2004 6 (25 SR), 18-VII-2004 2, 21-VI-2005 1, 12A-VI-2006 1, 4C-VII-2007 1 and 4D-VII-2007 1.

Notodontidae, Heterocampinae

1591. *Schizura unicornis* (J.E. Sm.) (8007. *Schizura unicornis* (J. E. Smith)) (Variegated Prominent or Unicorn Caterpillar Moth) – 20-VI-2001 3, 27-VI-2002 1, 19-VI-2004 1 and 4B-VII-2007 1.

EREBIDAE – *Quadrifine Noctuoides*

Erebidae, Lymantriinae, Orgyiini

1600. *Dasychira vagans* (B. & McD.) (8294. *Dasychira vagans* (B. & McD.)) (Variable Tussock Moth) – 20-VI-2001 1, 12-VII-2002 1, 25C-VI-2003 1 and 4B-VII-2007 1.
1601. *Dasychira plagiata* (Wlk.) (8304. *Dasychira plagiata* (Wlk.)) (Northern Conifer Tussock Moth) – 18-VII-2004 1 and 4C-VII-2007 1.

Erebidae, Arctiinae, Lithosiini

1606. *Hypoprepia miniata* (Kby.) (8089. *Hypoprepia miniata* (Kby.)) (Scarlet-winged Lichen Moth) – 12-VII-2002 2, 12B-VII-2003 1, 18-VII-2004 3 and 4C-VII-2007 1.
1608. *Clemensia albata* Pack. (8098. *Clemensia albata* Pack.) (Little White Lichen Moth) – 18-VII-2004 2 and 4B-VII-2007 1.

1609. *Eilema bicolor* (Grt.) (8043. *Eilema bicolor* (Grt.)) (Yellow-edged Footman or Bicolored Moth) – 21-VIII-2002 1, 10-IX-2002 2, 18-VII-2004 1, 15-VIII-2004 1, 28-VIII-2004 1 and 28A-VIII-2005 2.
1610. *Crambidia casta* (Pack.) (8051. *Crambidia casta* (Pack.)) (Pearly-winged Lichen Moth) – 1-IX-2001 3, 21-VIII-2002 3, 10-IX-2002 3, 21-VIII-2003 1, 15-VIII-2004 2, 28-VIII-2004 1, 28A-VIII-2005 3, 6B-VIII-2006 1, 27A-VIII-2006 1, 27B-VIII-2006 1 and 27C-VIII-2006 1.

Erebidae, Arctiinae, Arctiini

1613. *Virbia ferruginosa* (Wlk.) (8123. *Holomelina ferruginosa* (Wlk.)) (Rusty Holomelina or Spotted Salmon Tiger Moth) – 12-VII-2002 1, 18-VII-2004 3, 15-VIII-2004 1, 4C-VII-2007 1 and 4D-VII-2007 1.
1619. *Grammia virgo* (L.) (8197. *Grammia virgo* (L.)) (Virgin Tiger Moth) – 20-VI-2001 2, 12-VII-2002 1, 18-VII-2004 1, 4B-VII-2007 1 and 4D-VII-2007 1.
1620. *Grammia parthenice* (W. Kby.) (8196. *Grammia parthenice* (W. Kirby)) (Parthenice Tiger Moth) – 12A-VII-2003 1, 12B-VII-2003 1, 18-VII-2004 2, 15-VIII-2004 2, 2B-VIII-2005 1 and 4C-VII-2007 1.
1625. *Grammia williamsii* (Dodge) (8186. *Grammia williamsii* (Dodge)) – 20-VI-2001 2, 27-VI-2002 2, 12-VII-2002 2, 25B-VI-2003 1, 25C-VI-2003 1, 12B-VII-2003 1, 18-VII-2004 1, 21-VI-2005 3, 12C-VI-2006 1, 4C-VII-2007 1 and 4D-VII-2007 1.
1631. *Platarctia parthenos* (Harr.) (8162. *Platarctia parthenos* (Harr.)) (St. Lawrence Tiger Moth) – 19-VI-2004 1.
1635. *Phragmatobia assimilans* (Wlk.) (8158. *Phragmatobia assimilans* (Wlk.)) (Large Ruby Tiger Moth) – 4-VI-2002 2, 16B-V-2006 1 and 30A-V-2007 1.
1636. *Pyrrharctia isabella* (J.E. Sm.) (8129. *Pyrrharctia isabella* (J. E. Smith)) – 20-VI-2001 2, 27-VI-2002 1 and 12-VII-2002 2.
1637. *Estigmene acraea* (Drury) (8131. *Estigmene acraea* (Drury)) – 20-VI-2001 1.
1639. *Spilosoma congrua* (Wlk.) (8134. *Spilosoma congrua* (Wlk.)) – 8-VI-2001 1, 20-VI-2001 2, 21-VI-2005 2, 12A-VI-2006 1 and 4B-VII-2007 1.
1640. *Spilosoma dubia* (Wlk.) (8136. *Spilosoma dubia* (Wlk.)) – 8/9-VI-2001 (EM).
1641. *Spilosoma virginica* (F.) (8137. *Spilosoma virginica* (F.)) (Virginian Tiger Moth, Red-marked Tentmaker or Yellow Woolly Bear) – 20/21-VI-2001 (EM) and 18-VII-2004 1.
1644. *Hypercompe permaculata* (Pack.) (8144. *Hypercompe permaculata* (Pack.)) – 8-VI-2001 3, 20-VI-2001 1, 27-VI-2002 1, 12-VII-2002 2, 25B-VI-2003 1, 25C-VI-2003 2, 12B-VII-2003 2, 18-VII-2004 1, 15-VIII-2004 2, 21-VI-2005 1, 2A-VIII-2005 1, 12B-VI-2006 1, 12C-VI-2006 1, 4C-VII-2007 1 and 4D-VII-2007 1.
1649. *Lophocampa maculata* (Harr.) (8214. *Lophocampa maculata* (Harr.)) (Spotted Tussock Moth) – 27-VI-2002 1.
1652. *Ctenucha virginica* (Esp.) (8262. *Ctenucha virginica* (Esp.)) (Virginia Ctenucha) – 2-VII-1999 SR and 2-VII-2001 1.

Erebidae, Herminiinae

1654. *Idia americalis* (Gn.) (8322. *Idia americalis* (Gn.)) (American Snout Moth) – 20-VI-2001 2, 8-VIII-2001 2, 19-VI-2004 1, 18-VII-2004 1, 15-VIII-2004 1, 28A-VIII-2005 1, 12A-VI-2006 1, 12C-VI-2006 1, 6A-VIII-2006 1, 27C-VIII-2006 1, 4B-VII-2007 1 and 4C-VII-2007 1.
1655. *Idia aemula* Hbn. (8323. *Idia aemula* Hbn.) (Powdered Snout) – 18-VII-2004 1.

1657. *Idia lubricalis* (Gey.) (8334. *Idia lubricalis* (Gey.)) (Glossy Black Idia) – 10-IX-2002 2, 18-VII-2004 1, 15-VIII-2004 1 and 4B-VII-2007 2.
1662. *Zanclognatha latalba* (Sm.) (8354. *Zanclognatha latalba* (Sm.)) (The Canadian Zanclognatha) – 18-VII-2004 3 and 4C-VII-2007 1.
1663. *Chytolita petrealis* Grt. (8356. *Chytolita petrealis* Grt.) (Lesser Luteous Snout) – 19-VI-2004 4 and 21-VI-2005 1.
1666. *Phalaenostola metonalis* Wlk. (8362. *Phalaenostola metonalis* (Wlk.)) (Pale Phalaenostola, Tufted Snout) – 12-VII-2002 1 and 4D-VII-2007 1.
1667. *Phalaenostola hanhami* (Sm.) (8365. *Phalaenostola hanhami* (Sm.)) (Hanham's Snout Moth) – 18-VII-2004 1.
1668. *Bleptina caradrinalis* Gn. (8370. *Bleptina caradrinalis* Gn.) (Bent-winged Owlet) – 27-VI-2002 2, 25C-VI-2003 4, 18-VII-2004 1, 21-VI-2005 1, 12A-VI-2006 1 and 4C-VII-2007 2.
1669. *Palthis angulalis* (Hbn.) (8397. *Palthis angulalis* (Hbn.)) (Angulated Snout Moth) – 19-VI-2004 1.

Erebidae, Hypeninae

1677. *Hypena humuli* Harr. (8461. *Hypena humuli* Harr.) – 22A-IV-2005 1, 22B-IV-2005 2 and 28A-VIII-2005 1.

Erebidae, Scoliopteryginae, Scoliopterygini

1680. *Scoliopteryx libatrix* (L.) (8555. *Scoliopteryx libatrix* (L.)) (The Herald) – 12A-VI-2006 1.

Erebidae, Hypenodinae

1681. *Hypenodes fractilinea* (Sm.) (8421. *Hypenodes fractilinea* (Sm.)) (Broken-line Hypenodes) – 18-VII-2004 1.

Erebidae, Erebiniae, Melipotini

1694. *Drasteria hudsonica* (G. & R.) (8632. *Drasteria hudsonica* (G. & R.)) (Northern Arches) – 8-VI-2001 2, 20-VI-2001 2, 27-VI-2002 1, 25C-VI-2003 1, 21-VI-2005 1 and 12C-VI-2006 1.
1695. *Drasteria perplexa* (Hy. Edw.) (8635. *Drasteria perplexa* (Hy. Edw.)) (Perplexing Arches) – 18-VII-2004 1, 21-VI-2005 1, 16A-V-2006 1, 12B-VI-2006 1 and 4C-VII-2007 1.
1696. *Drasteria adumbrata* (Behr.) (8636. *Drasteria adumbrata* (Behr.)) – 12-VII-2002 1.

Erebidae, Erebiniae, Euclidiini

1698. *Euclidea cuspeida* (Hbn.) (8731. *Euclidea cuspeida* (Hbn.)) (Pointed Grass Moth) – 16B-V-2006 1 and 12-VI-2006 1.
1700. *Caenurgina crassiuscula* (Haw.) (8738. *Caenurgina crassiuscula* (Haw.)) (Clover Looper Moth) – 8-VI-2001 1, 4-VI-2002 1, 27-VI-2002 2, 12-VII-2002 1, 12B-VII-2003 1, 16B-V-2006 1 and 12C-VI-2006 1.
1701. *Caenurgina erechtea* (Cram.) (8739. *Caenurgina erechtea* (Cram.)) (Forage Looper Moth) – 28A-VIII-2005 1 and 16-VII-2006 1.

Erebidae, Erebiniae, Ophiuini

1703. *Zale minerea* (Gn.) (8697. *Zale minerea* (Gn.)) (Colorful Zale) – 16B-V-2006 2, 30A-V-2007 1, 30B-V-2007 1 and 30C-V-2007 1 .

Erebidae, Erebiniae, Catocalini

1705. *Catocala relictata* Wlk. (8803. *Catocala relictata* Wlk.) (White Underwing) – 8-VIII-2001 1, 21-VIII-2002 1, 10-IX-2002 1 and 15-VIII-2004 1 and 27A-VIII-2006 1.
1706. *Catocala unijuga* (Wlk.) (8805. *Catocala unijuga* (Wlk.)) (Once-married Underwing) – 8-VIII-2001 1, 15-VIII-2004 1, 6A-VIII-2006 1 and 27B-VIII-2006 1.
1709. *Catocala hermia* Hy. Edw. (8812. *Catocala hermia* Hy. Edw.) (Hermia Underwing) – 15-VIII-2004 1.
1711. *Catocala briseis* Edw. (8817. *Catocala briseis* Edw.) (Briseis Underwing) – 8-VIII-2001 1 and EM, 21-VIII-2002 1.
1713. *Catocala semirelictata* Grt. (8821. *Catocala semirelictata* Grt.) (Semirelict Underwing) – 10-IX-2002 1.
1719. *Catocala blandula* Hulst (8867. *Catocala blandula* Hulst) (Charming Underwing) – 24-IX-2004 1.

NOCTUIDAE – Owlets or Noctuid Moths

Noctuidae, Plusiinae, Plusiini

1740. *Autographa californica* (Spey.) (8914. *Autographa californica* (Speyer)) (Alfalfa Looper Moth) – 8-VIII-2001 EM, 1-IX-2001 2, 24-IX-2004 1, 22A-IV-2005 1 and 6B-VIII-2006 1.
1745. *Anagrapha falcifera* (Kby.) (8924. *Anagrapha falcifera* (Kby.)) (Celery Looper Moth) – 27-VI-2002 1, 25B-VI-2003 1, 25C-VI-2003 1, 21-VI-2005 1 and 28A-VIII-2005 1.
1746. *Syngrapha octoscripta* (Grt.) (8926. *Syngrapha octoscripta* (Grt.)) – 10-IX-2002 1.

Noctuidae, Eustrotiinae

1767. *Protodeltote albidula* (Gn.) (9048. *Lithacodia albidula* (Gn.)) (Common Midget) – 8-VI-2001 2, 20-VI-2001 1 and 12A-VI-2006 1.

Noctuidae, Acontiinae, Acontiini

1770. *Ponometia tortricina* (Zell.) (9101. *Tarachidia tortricina* (Zell.)) (Olive-shaded Bird-dropping Moth) – 20/21-VI-2001 EM, 27-VI-2002 4, 12-VII-2002 1, 12B-VII-2003 2, 18-VII-2004 1, 15-VIII-2004 2, 21-VI-2005 1 and 12-VI-2006 1.
1771. *Ponometia elegantula* (Edw.) (9110. *Conochares arizonae* (Hy. Edw.)) (Arizona Bird-dropping Moth) – 8-VI-2001 6, 20-VI-2001 1 and EM, 8-VIII-2001 EM, 4-VI-2002 1, 27-VI-2002 3, 12-VII-2002 1, 25C-VI-2003 1, 12B-VII-2003 1, 19-VI-2004 1, 18-VII-2004 1 and 12B-VI-2006 2.
1773. *Tarache angustipennis* (Grt.) (9111. *Therapsea angustipennis* Grt and 9112. *Therapsea flavicosta* (Sm.)) (Narrow-winged Midget) – 20-VI-2001 1, 25A-VI-2003 1, 25C-VI-2003 1, 19-VI-2004 2, 18-VII-2004 2 and 16A-V-2006 1.

Noctuidae, Pantheinae

1774. *Panthea acronyctoides* (Wlk.) (9177. *Panthea acronyctoides* (Wlk.)) (Black Zigzag) – 18-VII-2004 2.

Noctuidae, Dilobinae

1778. *Raphia frater* Grt. (9193. *Raphia frater* Grt.) (The Brother) – 20-VI-2001 2 and EM, 27-VI-2002 1, 12B-VII-2003 1, 19-VI-2004 1, 21-VI-2005 1 and 12A-VI-2006 1.

Noctuidae, Acronictinae

1785. *Acronicta radcliffei* (Harr.) (9209. *Acronicta radcliffei* (Harr.)) (Radcliff's Dagger Moth) – 16A-V-2006 1. This species has been rarely collected in Alberta. An early record is from Red Deer.
1787. *Acronicta grisea* (Wlk.) (9212. *Acronicta grisea* (Wlk.)) (Gray Dagger Moth) – 16B-V-2006 1, 30B-V-2007 1 and 30B-V-2007 1.
1789. *Acronicta quadrata* Grt. (9224. *Acronicta quadrata* Grt.) – 18-VII-2004 1.
1790. *Acronicta superans* Gn. (9226. *Acronicta superans* Gn.) – 21-VI-2005 1 and 4C-VII-2007 1.
1791. *Acronicta hasta* Gn. (9229. *Acronicta hasta* Gn.) (Speared Dagger Moth) – 27-VI-2002 1 and 4C-VII-2007 1.
1793. *Acronicta fragilis* (Gn.) (9241. *Acronicta fragilis* (Gn.)) (Fragile Dagger Moth) – 20-VI-2001 1, 19-VI-2004 2, 16B-V-2006 1, 30A-V-2007 1 and 4B-VII-2007 1.
1794. *Acronicta impleta* Wlk. (9257. *Acronicta impleta* Wlk.) (Yellow-haired Dagger Moth) – 4-VI-2002 EM OLDS.
1796. *Acronicta impressa* Wlk. (9261. *Acronicta impressa* Wlk.) (Willow Dagger Moth) – 18-VII-2004 1 and 30A-V-2007 1.
1802. *Harrisimemna trisignata* (Wlk.) (9286. *Harrisimemna trisignata* (Wlk.)) (Harris's Three-spot) – 20-VI-2001 1.

Noctuidae, Oncocnemidinae

1808. *Cucullia intermedia* Spey. (10194. *Cucullia intermedia* Speyer) (Intermediate Falconer, Goldenrod Cutworm Moth) – 8-VI-2001 1 and 16B-V-2006 1.
1828. *Pleromelloida conserta* (Grt.) (10028. *Pleromelloida obliquata* (Sm.)) (Oblique Rover) – 22A-IV-2005 1 and 22B-IV-2005 1.
1836. *Sympistis stabilis* Sm. (10062. *Homohadena stabilis* Sm.) (Brown Sallow) – 8-VIII-2001 1, 18-VII-2004 1, 4C-VII-2007 1 and 4D-VII-2007 1.
1837. *Sympistis badistriga* (Grt.) (10059. *Homohadena badistriga* (Grt.)) – 2A-VIII-2005 1.
1838. *Sympistis dinalda* (Sm.) (10065. *Homohadena infixa* (Wlk.)) (Broad-lined Sallow) – 12-VII-2002 2 and 28-VIII-2004 1.
1844. *Sympistis mackiei* B. & Benj. (10143. *Oncocnemis mackiei* B. & Benj.) (Mackie's Beauty) – 1-IX-2001 11 and EM, 10-IX-2002 4, 24-IX-2004 3, 28A-VIII-2005 2, 27A-VIII-2006 1, 27B-VIII-2006 1 and 27C-VIII-2006 1.
1845. *Sympistis cibalis* Grt.) (10124. *Oncocnemis cibalis* Grt.) (Delicate Beauty) – 1-IX-2001 EM, 10-IX-2002 3 and 24-IX-2004 1.
1852. *Sympistis riparia* Morr. (10135. *Oncocnemis riparia* Morr.) (Greater Beauty) - 4C-VII-2007 1.
1858. *Sympistis dentata* (Grt.) (10055. *Apharetra dentata* (Grt.)) – 2B-VIII-2005 1.

1864. *Sympistis pallidior* (Barnes) (10130.1. *Oncocnemis figurata* (Harv.)) – 20-VI-2001 1 and EM, 17-VI-2002 1, 10-IX-2002 1, 25B-VI-2003 1, 25C-VI-2003 2, 18-VII-2004 2 and 21-VI-2005 1.

Noctuidae, Condicinae, Leuconictini

1871. *Leuconycta lepidula* (Grt.) (9066. *Leuconycta lepidula* (Grt.)) (Brown Leuconycta) – 20/21-VI-2001 EM.

Noctuidae, Heliiothinae

1892. *Schinia cumatilis* (Grt.) (11192. *Schinia cumatilis* (Grt.)) (Silver-banded Gem) – 18-VII-2004 1.

Noctuidae, Noctuinae, Pseuostrotiini

1897. *Pseudostrotia carneola* (Gn.) (9053. *Pseudostrotia carneola* (Gn.)) (Pink-barred Lithacodia) – 20/21-VI-2001 EM, 27-VI-2002 3, 10-IX-2002 1, 19-VI-2004 1, 21-VI-2005 1 and 4B-VII-2007 1.

1898. *Anterastria teratophora* (H.-S.) (9284. *Agriopodes teratophora* (H.-S.)) (Gray Marvel) – 20-VI-2001 2 and EM.

Noctuidae, Noctuinae, Elaphriini

1900. *Elaphria alapallida* (Pogue & Sullivan) (9681. *Elaphria festivoides* (Gn.)) (Festive Midget) – 20-VI-2001 1 and EM, 19-VI-2004 2 and 12A-VI-2006 1.

Noctuidae, Noctuinae, Caradrini

1904. *Caradrina meralis* (Morr.) (9654. *Platyperigea meralis* (Morr.)) – 2A-VIII-2005 1.

1905. *Caradrina montana* (Bremer) (9656. *Platyperigea extima* (Wlk.)) (Civil Rustic) – 20-VI-2001 1, 8-VIII-2001 1, 12-VII-2002 2 SR, 10-IX-2002 1, 25C-VI-2003 1, 28N-VIII-2004 1 (2 SR), 28S-VIII-2004 3 SR, 24S-IX-2004 3 SR, 24N-IX-2004 2 SR, 2A-VIII-2005 1, 28A-VIII-2005 1, 27A-VIII-2006 1 and 27B-VIII-2006 1.

1906. *Proxenus miranda* (Grt.) (9647. *Proxenus miranda* (Grt.)) (Glistening Rustic) – 8-VI-2001 4, 20-VI-2001 5 and EM, 27-VI-2002 1, 25C-VI-2003 2, 12C-VI-2006 1, 4C-VII-2007 1 and 4D-VII-2007 1.

1907. *Proxenus mendosa* McD. (9649. *Proxenus mendosa* McD.) – 8-VIII-2001 1.

Noctuidae, Noctuinae, Apameini

1912. *Apamea vultuosa* (Grt.) (9341. *Apamea vultuosa* (Grt.)) (Narrow-bordered Quaker of Airy Quaker) – 12C-VI-2006 1.

1914. *Apamea alia* (Gn.) (9351. *Apamea alia* (Gn.)) (Dewy Quaker) – 12A-VI-2006 1.

1918. *Apamea sordens* (Hufn.) (9364. *Apamea finitima* Gn.) (Bordered Apamea) – 12C-VI-2006 1.

1924. *Apamea commoda* (Wlk.) (9359. *Apamea commoda* (Wlk.)) (Gray Quaker) – 12-VII-2002 2, 19-VI-2004 2, 18-VII-2004 2, 21-VI-2005 1, 4B-VII-2007 1, 4C-VII-2007 1 and 4D-VII-2007 1.

1927. *Apamea amputatrix* (Fitch) (9348. *Apamea amputatrix* (Fitch)) (Northern Quaker or Yellow-headed Cutworm Moth) – 4/5-VII-2001 EM and 12-VII-2002 3.
1929. *Apamea longula* (Grt.) (9383. *Apamea longula* (Grt.)) (Mountain Quaker) – 4/5-VII-2001 EM, 2A-VIII-2005 2 and 2B-VIII-2005 2.
1930. *Apamea scoparia* Mikkola, Mustelin & Laf. (9365. *Agroperina lateritia* (Hufn.)) (Red-winged Quaker) – 20-VI-2001 2, 8-VIII-2001 1, 25B-VI-2003 1, 25C-VI-2003 1, 12B-VII-2003 1, 4C-VII-2007 1 and 4D-VII-2007 1.
1932. *Apamea inficita* (Wlk.) (9369. *Apamea inficita* (Wlk.)) (Inficita Quaker) – 8-VIII-2001 1, 12-VII-2002 1, 18-VII-2004 1 and 5-VIII-2004 1.
1933. *Apamea devastator* (Brace) (9382. *Crymodes devastator* (Brace)) (Glassy Cutworm Moth) – 10-IX-2002 1, 25C-VI-2003 2, 12B-VII-2003 1, 18-VII-2004 2, 15-VIII-2004 3, 21-VI-2005 2, 2A-VIII-2005 1, 2B-VIII-2005 1, 28A-VIII-2005 2, 12A-VI-2006 1, 12C-VI-2006 1, 6A-VIII-2006 1 and 6C-VIII-2006 1.
1936. *Apamea niveivenosa* (Grt.) (9374. *Apamea niveivenosa* (Grt.)) – 21-VIII-2005 1.
1939. *Eremobina claudens* (Wlk.) (9396. *Eremobina claudens* (Wlk.)) – 28A-VIII-2005 1.
1943. *Oligia egens* (Wlk.) (9417. *Oligia egens* (Wlk.)) (Neomogen's Quaker) – 1-IX-2001 1.
1944. *Oligia mactata* (Gn.) (9419. *Oligia mactata* (Gn.)) – 28A-VIII-2005 2, 27A-VIII-2006 1, 27B-VIII-2006 1 and 27C-VIII-2006 1.
1945. *Oligia illocata* (Wlk.) (9420. *Oligia illocata* (Wlk.)) (Wandering Quaker) – 19-VI-2004 1, 28-VIII-2004 1 and 28A-VIII-2005 1.
1950. *Photedes includens* (Wlk.) (9434. *Spartiniphaga includens* (Wlk.)) (Silver-C Borer) – 2-IX-2004 1 and 28A-VIII-2005 1.
1956. *Hypocoena rufostrigata* (Pack.) (9440. *Chortodes rufostrigata* (Pack.)) (Brown-streaked Rustic) – 12-VII-2002 1 and 18-VII-2004 1.
1962. *Amphipoea americana* (Spey.) (9457. *Amphipoea americana* (Speyer)) (American Ear Moth) – 8-VIII-2001 EM, 1-IX-2001 1, 21-VIII-2002 2, 10-IX-2002 1 and 28A-VIII-2005 1.

Noctuidae, Noctuinae, Arzamini

1971. *Bellura obliqua* (Wlk.) (9525. *Bellura obliqua* (Wlk.)) (Cattail Borer Moth) – 8-VIII-2001 EM.

Noctuidae, Noctuinae, Xylenini

1975. *Xylena nupera* (Lint.) (9873. *Xylena nupera* (Lint.)) (American Swordgrass) – 27-VI-2002 1.
1976. *Xylena curvimacula* (Morr.) (9874. *Xylena curvimacula* (Morr.)) (Dot-and-Dash Swordgrass Moth) – 24-IX-2004 1.
1980. *Lithomoia germana* (Morr.) (9878. *Lithomoia solidaginis germana* (Morr.)) (American Peasant) – 27C-VIII-2006 1.
1983. *Litholomia napaea* (Morr.) (9884. *Litholomia napaea* (Morr.)) (Dark Gray Peasant) – 1-IX-2001 1, 24B-IX-2004 1 (3 SR), 24A-IX-2004 3 SR, 22A-IV-2005 1 and 22B-IV-2005 1.
1988. *Lithophane tepida* Grt. (9909. *Lithophane tepida* Grt.) (Dowdy Pinion) – 27A-VIII-2006 1.
1989. *Lithophane georgii* Grt. (9913. *Lithophane georgii* Grt.) (Large Grey Pinion) – 16B-V-2006 1.
1999. *Eucirroedia pampina* (Gn.) (9952. *Eucirroedia pampina* (Gn.)) (Spotted Sallow) – 1-IX-2001 1, 24-IX-2004 1 and 28A-VIII-2005 1, 27A-VIII-2006 2, 27B-VIII-2006 1.
2003. *Anathix puta* (Grt. & Rob.) (9962. *Anathix puta* (Grt. & Rob.)) (Putta Sallow) – 1-IX-2001 2, 10-IX-2002 1, 15-VIII-2004 1, 28-VIII-2004 1 and 28A-VIII-2005 1.

2005. *Xanthia tatago* Laf. & Mik. (9965. *Xanthia togata* (Esp.)) (Pink-barred Sallow) – 10-IX-2002 1.
2008. *Brachylomia populi* (Stkr.) (9993. *Brachylomia populi* (Stkr.)) (Cloaked Peasant) – 1-IX-2001 2.
2009. *Brachylomia algens* (Grt.) (9998. *Brachylomia algens* (Grt.)) (Willow Peasant) – 1-IX-2001 1.
2010. *Brachylomia discinigra* (Wlk.) (9999. *Brachylomia discinigra* (Wlk.)) (Black-disked Peasant) – 27A-VIII-2006 1.
2014. *Aseptis characta* (Grt.) (9543. *Aseptis characta* (Grt.)) – 12-VII-2002 1, 18-VII-2004 1, 4C-VII-2007 1 and 4D-VII-2007 3.
2019. *Enargia decolor* (Wlk.) (9549. *Enargia decolor* (Wlk.)) (Angle-striped Sallow) – 1-IX-2001 1, 28B-VIII-2004 6 SR, 24N-IX-2004 1 (9 SR), 28A-VIII-2005 2, 6A-VIII-2006 1, 27A-VIII-2006 1, 27B-VIII-2006 1 and 27C-VIII-2006 1.
2020. *Enargia infumata* (Grt.) (9550. *Enargia infumata* (Grt.)) Lesser Angle-striped Sallow) – 18-VII-2004 3, 15-VIII-2004 2, 2A-VIII-2005 1 and 28A-VIII-2005 3.
2021. *Ipimorpha pleonectusa* Grt. (9555. *Ipimorpha pleonectusa* Grt.) (Even-lined Sallow) – 15-VIII-2004 1, 2B-VIII-2005 1 and 27A-VIII-2006 1.
2022. *Andropolia contacta* (Wlk.) (9564. *Andropolia contacta* (Wlk.)) (Canadian Giant) – 15-VIII-2004 1, 2A-VIII-2005 1, 2B-VIII-2005 1 and 6A-VIII-2006 1.
2035. *Mniotype ducta* (Grt.) (9987. *Mniotype ducta* (Grt.)) – 25C-VI-2003 1.
2038. *Ufeus satyricus* Grt. (11051. *Ufeus satyricus* Grt.) (Satyr Dart) – 11-IX-2004 4.
2040. *Chytonix palliatricula* (Gn.) (9556. *Chytonix palliatricula* (Gn.)) (Cloaked Marvel) – 19-VI-2004 1 and 4B-VII-2007 1.

Noctuidae, Noctuinae, Orthosiini

2044. *Orthosia revicta* (Morr.) (10490. *Orthosia revicta* (Morr.)) (Subdued Quaker) – 4-VI-2002 1, 22A-IV-2005 1 and 22B-IV-2005 1.
2045. *Orthosia segregata* (Sm.) (10493. *Orthosia segregata* (Sm.)) (Segregate Penman) – 21A-V-2003 2, 22A-IV-2005 3, 22B-IV-2005 1, 16A-V-2006 1 and 30B-V-2007 1. *Orthosia segregata* f. *negussa* (Sm.) – 21B-V-2003 1, 22A-IV-2005 1 and 22B-IV-2005 1.
2046. *Orthosia hibisci* (Gn.) (10495. *Orthosia hibisci* (Gn.)) – 22A-IV-2005 1 and 22B-IV-2005 1.
2049. *Egira dolosa* (Grt.) (10513. *Egira dolosa* (Grt.)) (Greiving Woodling or Greater Black-letter Dart) – 22B-IV-2005 1, 16A-V-2006 1 and 16B-V-2006 1.

Noctuidae, Noctuinae, Tholerini

2052. *Tholera americana* (Sm.) (10523. *Tholera americana* (Sm.)) – 27C-VIII-2006 1. At the northern limit of its range.
2053. *Nephelodes minians* Gn. (10524. *Nephelodes minians* Gn.) (Bronzed Cutworm Moth) – 4/5-VII-2001 EM, 21-VIII-2002 1, 10-IX-2002 1, 15-VIII-2004 1, 26-VIII-2004 1, 28N-VIII-2004 1 SR, 22A-VIII-2005 2, 6A-VIII-2006 1, 6C-VIII-2006 1, 27A-VIII-2006 1, 27B-VIII-2006 1 and 27C-VIII-2006 1.

Noctuidae, Noctuinae, Hadenini

2060. *Anarta montanica* (McD.) (10228c. *Discestra oregonica montanica* McD.) – 4-VI-2002 2 and 25C-VI-2003 1.

2064. *Anarta farnhami* (Grt.) (10232. *Discestra farnhami* (Grt.)) (Farnham's Discestra) – 3-VI-2002 3, 30C-V-2007 1 and 4D-VII-2007 1.
2065. *Anarta crotchii* (Grt.) (10233. *Discestra crotchii* (Grt.)) – 4-VII-2002 1.
2068. *Scotogramma submarina* (Grt.) (10238. *Scotogramma submarina* (Grt.)) – 4-VI-2002 6, 17-VI-2002 2, 19-VI-2004 1, 18-VII-2004 1 and 21-VI-2005 1, 16A-V-2006 1, 16B-V-2006 3, 12A-VI-2006 1 and 30C-V-2007 1.
2072. *Polia discalis* (Grt.) (10273. *Polia discalis* (Grt.)) (Large Gray Polia) – 18-VII-2004 2 and 4B-VII-2007 1.
2074. *Polia nimbosa* (Gn.) (10275. *Polia nimbosa* (Gn.)) (Stormy Arches) – 20-VI-2001 2, 12C-VI-2006 1 and 4B-VII-2007 1.
2075. *Polia imbrifera* (Gn.) (10276. *Polia imbrifera* (Gn.)) (Cloudy Arches) – 12-VII-2002 1, 21-VI-2005 1, 12A-VI-2006 1 and 4D-VII-2007 1.
2079. *Polia purpurissata* (Grt.) (10280. *Polia purpurissata* (Grt.)) (Purple Arches) – 8-VIII-2001 4, 12-VII-2002 3, 21-VIII-2002 1, 18-VII-2004 2, 15-VIII-2004 2, 2A-VIII-2005 3 and 4C-VII-2007 1.
2080. *Polia nugatis* (Sm.) (10281. *Polia nugatis* (Sm.)) – 4/5-VII-2001 EM, 8-VIII-2001 1 and EM, 12-VIII-2002 1 and 28-VIII-2004 1.
2083. *Lacanobia radix* (Wlk.) (10298. *Lacanobia radix* (Wlk.)) (Garden Arches) – 4-VI-2002 1, 12-VII-2002 1, 16A-V-2006 1, 16B-V-2006 1, 12A-VI-2006 1, 12C-VI-2006 1 and 4C-VII-2007 1.
2084. *Lacanobia subjuncta* (G. & R.) (10299. *Lacanobia subjuncta* (G. & R.)) (Harnessed Arches) – 12C-VI-2006 1.
2089. *Spiramater grandis* (Gn.) (10300. *Spiramater grandis* (Gn.)) (Pale-banded Arches) – 20-VI-2001 1.
2094. *Trichordestra dodii* (Sm.) (10305. *Trichordestra dodii* (Sm.)) (Dod's Arches) – 8-VI-2001 1, 20-VI-2001 EM, 27-VI-2002 1 and 19-VI-2004 1.
2095. *Trichordestra lilacina* (Herv.) (10307. *Lacanobia lilacina* (Harv.)) (Lilac Arches) – 4/5-VII-2001 EM, 27-VI-2002 1, 12B-VII-2003 1, 4B-VII-2007 1 and 4C-VII-2007 1.
2096. *Trichordestra liquida* (Grt.) (10308. *Trichordestra liquida* (Grt.)) (Liquid Arches) – 8-VI-2001 3, 20-VI-2001 1, 25C-VI-2003 1 and 4D-VII-2007 1.
2097. *Papestra quadrata* (Sm.) (10310. *Papestra quadrata* (Sm.)) (Quadrate Arches) – 4-VI-2002 2 and 16B-V-2006 3.
2102. *Mamestra configurata* Wlk. (10271. *Mamestra configurata* Wlk.) (Bertha Armyworm) – 4/5-VII-2001 EM, 12-VII-2002 1, 18-VII-2004 1, 2A-VIII-2005 1, 4C-VII-2007 1 and 4D-VII-2007 1.
2107. *Sideridis rosea* (Harv.) (10265. *Sideridis rosea* (Harv.)) (The Rosywing) – 8-VI-2001 2, 4-VI-2002 3, 27-VI-2002 1, 16A-V-2006 1, 12B-VI-2006 1, 12C-VI-2006 1 and 30C-V-2007 1.
2110. *Hadena circumvadis* Sm. (10322. *Hadena circumvadis* Sm.) – 12B-V-2005 1, 4B-VII-2007 1 and 4C-VII-2007 1.

Noctuidae, Noctuinae, Leucaniini

2112. *Faronta diffusa* (Wlk.) (10431. *Faronta diffusa* (Wlk.)) (Wheat Head Armyworm Moth) – 20-VI-2001 2, 25B-VI-2003 1 and 4C-VII-2007 1.
2113. *Dargida procinctus* (Grt.) (10428. *Dargida procincta* (Grt.)) (The Girdler) – 24-IX-2004 1.
2114. *Mythimna oxygala* (Grt.) (10436. *Aletia oxygala* (Grt.)) (Lesser Wainscot) – 8-VIII-2001 1 and 6C-VIII-2006 1.
2115. *Mythimna unipuncta* (Haw.) (10438. *Pseudaletia unipuncta* (Haw.)) – 8-VI-2001 EM.

2117. *Leucania anteoclara* Sm. (10442. *Leucania anteoclara* Sm.) - 4D-VII-2007 1.
 2118. *Leucania multilinea* Wlk. (10446. *Leucania multilinea* Wlk.) (Many-lined Wainscot) – 2B-VIII-2005 1.
 2119. *Leucania commoides* Gn. (10447. *Leucania commoides* Gn.) (Comma Wainscot) –8-VIII-2001 2, 12-VII-2002 1, 21-VIII-2002 2, 12B-VII-2003 1, 2A-VIII-2005 1, 4C-VII-2007 1 and 4D-VII-2007 2.
 2120. *Leucania insueta* Gn. (10449. *Leucania insueta* Gn.) (Heterodox Wainscot) – 8-VI-2001 2 and EM, 20-VI-2001 1, 25C-VI-2003 1 and 12C-VI-2006 1.

Noctuidae, Noctuinae, Eriopygini

2142. *Lacinipolia meditata* (Grt.) (10368. *Lacinipolia meditata* (Grt.) (The Thinker) – 4/5-VII-2001 EM.
 2143. *Lacinipolia lustralis* (Grt.) (10370. *Lacinipolia lustralis* (Grt.)) (Lustrous Arches) – 20-VI-2001 3 and 12B-VI-2006 1.
 2145. *Lacinipolia anguina* (Grt.) (10372. *Lacinipolia anguina* (Grt.)) (Snaky Arches) – 8-VI-2001 1, 20-VI-2001 1, 4-VI-2002 3, 25B-VI-2003 1, 21-VI-2005 1, 16B-V-2006 1 and 30B-V-2007 1.
 2147. *Lacinipolia naevia* (Sm.) (10381. *Lacinipolia naevia* (Sm.)) – 8-VI-2001 1, 20-VI-2001 1, 19-VI-2004 2 and 30C-V-2007 1.
 2148. *Lacinipolia vicina* (Grt.) (10394. *Lacinipolia vicina* (Grt.)) (Small Gray Arches) – 20-VI-2001 1, 4/5-VII-2001 EM, 12-VII-2002 1, 18-VII-2004 2, 21-VI-2005 1, 4C-VII-2007 2 and 4D-VII-2007 1.
 2150. *Lacinipolia renigera* (Steph.) (10397. *Lacinipolia renigera* (Steph.)) (Kidney-spotted Arches or Bristly Cutworm Moth) – 12-VII-2002 1, 4C-VII-2007 1 and 4D-VII-2007 1.
 2152. *Lacinipolia lorea* (Gn.) (10405. *Lacinipolia lorea* (Gn.)) (Bridled Arches) – 20-VI-2001 1, 12B-VII-2003 1, 18-VII-2004 1, 21-VI-2005 1, 12A-VI-2006 1, 4C-VII-2007 1 and 4D-VII-2007 1.
 2153. *Lacinipolia olivacea* (Morr.) (10406. *Lacinipolia olivacea* (Morr.)) (Olive Arches) – 8-VIII-2001 2.
 2158. *Homorthodes furfurata* Grt. (10532. *Homorthodes furfurata* Grt.) - 4C-VII-2007 1.
 2162. *Protorthodes oviduca* (Gn.) (10563. *Protorthodes oviduca* (Gn.)) (Ruddy Quaker) – 4-VI-2002 1, 25C-VI-2003 1, 16B-V-2006 1 and 30C-V-2007 1.
 2165. *Polia goodelli* (Grt.) (10289. *Polia goodelli* (Grt.)) (Goodell's Arches) – 8-VI-2001 1.
 2166. *Orthodes obscura* (Sm.) (10290. *Polia obscura* (Sm.)) (Obscure Arches) – 8-VI-2001 2.
 2168. "*Polia*" *detracta* (Wlk.) (10288. *Polia detracta* (Wlk.)) (Dingy Arches) – 20-VI-2001 5, 4-VI-2002 1, 27-VI-2002 2, 25B-VI-2003 1, 25C-VI-2003 3, 19-VI-2004 3, 21-VI-2005 2, 12A-VI-2006 2, 12C-VI-2006 2 and 4D-VII-2007 1.

Noctuidae, Noctuinae, Noctuini

2172. *Peridroma saucia* (Hbn.) (10915. *Peridroma saucia* (Hbn.)) – 4-VI-2002 1, 27-VI-2002 3, 21-VIII-2002 2, 10-IX-2002 2, 25C-VI-2003 4 and 12B-VII-2003 1.
 2173. *Anicla exuberans* (Sm.) (10905. *Euagrotis exuberans* (Sm.)) - 4C-VII-2007 1 and 4D-VII-2007 1.
 2174. *Anicla tepperi* (Sm.) (10910. *Euagrotis tepperi* (Sm.)) (Black-girdled Dart) – 19-VI-2004 2, 18-VII-2004 1, 24-IX-2004 1, 21-VI-2005 4, 4C-VII-2007 1 and 4D-VII-2007 1.

2176. *Actebia balanitis* (Grt.) (10923. *Protexarnis squalida* (Grt.)) (Acorn Dart or Bracketed Dart) – 20-VI-2001 2, 1-IX-2001 1, 27-VI-2002 1, 12-VII-2002 1, 25B-VI-2003 2, 25C-VI-2003 1, 18-VII-2004 1, 28A-VIII-2005 2, 27A-VIII-2006 1, 27B-VIII-2006 1 and 27C-VIII-2006 1.
2184. *Protogygia querula* (Dod) (10894. *Protogygia querula* (Dod)) – 25C-VI-2003 1 and 18-VII-2004 1.
2188. *Euxoa adumbrata* (Ev.) (Not in Hodges) (Sordid Dart – 20/21-VI-2001 EM.
2189. *Euxoa auxiliaris* (Grt.) (107312. *Chorizagrotis auxiliaris* (Grt.)) (Auxiliary Dart) – 4-VI-2002 1, 27-VI-2002 4, 21-VIII-2002 2, 10-IX-2002 2, 25C-VI-2003 4 and 12B-VII-2003 1.
2194. *Euxoa messoria* (Harr.) (10705. *Euxoa messoria* (Harr.)) (Reaper Dart or Dark-sided Cutworm) – 24-IX-2004 1.
2195. *Euxoa divergens* (Wlk.) (10702. *Euxoa divergens* (Wlk.)) (Divergent Dart) – 20-VI-2001 1, 12-VII-2002 2, 25C-VI-2003 3, 12B-VII-2003 1, 19-VI-2004 1, 18-VII-2004 2 and 4D-VII-2007 1.
2204. *Euxoa tristicula* (Morr.) (10723. *Euxoa tristicula* (Morr.)) (Early Cutworm Moth) – 27-VI-2002 1, 12-VII-2002 2, 12B-VII-2003 1, 18-VII-2004 2 and 4B-VII-2007 1.
2209. *Euxoa medialis* (Sm.) (10813. *Euxoa medialis* (Sm.)) (Median-banded Dart) – 10-IX-2002 1 and 24-IX-2004 1.
2214. *Euxoa setonia* McD. (10794. *Euxoa setonia* McD.) (Seton Lake Dart) – 20-VI-2001 4, 27-VI-2002 3, 12-VII-2002 2, 25C-VI-2003 1, 12B-VII-2003 1, 12B-VI-2006 1, 4B-VII-2007 1, 4C-VII-2007 1 and 4D-VII-2007 1.
2215. *Euxoa declarata* (Wlk.) (10755. *Euxoa declarata* (Wlk.)) – 28A-VIII-2005 1.
2216. *Euxoa campestris* (Grt.) (10756. *Euxoa campestris* (Grt.)) (Flat Dart) – 8-VIII-2001 1, 10-IX-2002 2 and 2B-VIII-2005 1.
2221. *Euxoa plagigera* (Morr.) (10804. *Euxoa plagigera* (Morr.)) (Plaited Dart) – 15-VIII-2004 1 and 28A-VIII-2005 1.
2222. *Euxoa albipennis* (Grt.) (10807. *Euxoa albipennis* (Grt.)) (White-winged Dart) – 10-IX-2002 1 and 28-VIII-2004 1.
2224. *Euxoa comosa* (Morr.) (10780. *Euxoa comosa* (Morr.)) (Hairy Dart) – 8-VIII-2001 4, 1-IX-2001 2, 1-IX-2001 1 EM, 10-IX-2002 1, 27-VIII-2002 1, 10-IX-2002 4, 18-VII-2004 1, 28-VIII-2004 1, 24-IX-2004 1, 2A-VIII-2005 2, 2B-VIII-2005 1, 28A-VIII-2005 4, 6B-VIII-2006 1, 27A-VIII-2006 2, 27B-VIII-2006 2, 27C-VIII-2006 1 and 30B-V-2007 1.
2228. *Euxoa ochrogaster* (Gn.) (10801. *Euxoa ochrogaster* (Gn.)) (Red-backed Cutworm Moth) – 8-VIII-2001 5, 1-IX-2001 3, 21-VIII-2002 1, 10-IX-2002 4, 15-VIII-2004 1 and 28A-VIII-2005 1.
2232. *Euxoa obeliscoides* (Gn.) (10817. *Euxoa obeliscoides* (Gn.)) (Obelisk Dart) – 1-IX-2001 4 EM, 10-IX-2002 1 and 24-IX-2004 3.
2233. *Euxoa basalis* (Grt.) (10798. *Euxoa basalis* (Grt.)) (Basal Dart) – 8-VIII-2001 1 and 21-VIII-2002 1.
2235. *Euxoa idahoensis* (Grt.) group (10826. *Euxoa idahoensis* (Grt.) group) – 2B-VIII-2005 1 and 4C-VII-2007 2.
2240. *Euxoa auripennis* Laf. or 2240. *Euxoa servitus* (Sm.) (10852. *Euxoa auripennis* Laf. or 10854. *Euxoa servita* (Sm.)) – 8-VIII-2001 1, 1-IX-2001 2, 18-VII-2004 1 and 6B-VIII-2006 1.
2241. *Euxoa olivalis* (Grt.) (10833. *Euxoa olivalis* (Grt.)) – 18-VII-2004 1 and 2A-VIII-2005 1.
2252. *Euxoa quadridentata* (G. & R.) (10830. *Euxoa quadridentata* (Grt. & Rob.)) (Four-toothed Dart) – 1-IX-2001 EM.
2257. *Euxoa aequalis* (Harv.) (10777. *Euxoa aequalis* (Harv.)) – 10-IX-2002 3 and 24-IX-2004 1.
2260. *Euxoa nevada* (Sm.) (10769. *Euxoa nevada* (Sm.)) (Nevada Dart) – 1-IX-2001 EM.

2271. *Euxoa ridingsiana* (Grt.) (10861. *Euxoa ridingsiana* (Grt.)) (Riding's Dart) – 8-VIII-2001 3, 21-VIII-2002 3, 10-IX-2002 2 and 15-VIII-2004 1.
2272. *Feltia mollis* (Wlk.) (10644. *Agrotis mollis* (Wlk.)) – 12B-VII-2003 1, 4B-VII-2007 1, 4C-VII-2007 1 and 4D-VII-2007 1.
2274. *Feltia jaculifera* (Gn.) (10670. *Feltia jaculifera* (Gn.)) (Dingy Cutworm Moth) – 4/5-VII-2001 EM, 21-VIII-2002 1, 10-IX-2002 1, 15-VIII-2004 1, 2B-VIII-2005 2, 28A-VIII-2005 3, 6C-VIII-2006 1, 27A-VIII-2006 1, 27B-VIII-2006 1, 27C-VIII-2006 1 and 4C-VII-2007 1.
2280. *Agrotis orthogonia* Morr. (10645. *Agrotis orthogonia* Morr.) – 28A-VIII-2005 1.
2281. *Agrotis robustior* (Sm.) (10650. *Agrotis robustior* (Sm.)) (Robust Dart) – 8-VIII-2001 1, 15-VIII-2004 1, 28A-VIII-2005 2 and 27A-VIII-2006 1.
2282. *Agrotis venerabilis* (Wlk.) (10651. *Agrotis venerabilis* (Wlk.)) (Venerable Dart) – 1-IX-2001 3, 27-VI-2002 1, 21-VIII-2002 1, 10-IX-2002 1, 28-VIII-2004 1, 28A-VIII-2005 2, 27A-VIII-2006 1, 27B-VIII-2006 1 and 27C-VIII-2006 1.
2283. *Agrotis vancouverensis* Grt. (10652. *Agrotis vancouverensis* Grt.) (Vancouver Dart) – 8-VI-2000 1, 8-VI-2001 3, 20-VI-2001 2, 27-VI-2002 3, 25B-VI-2003 1, 25C-VI-2003 1, 12B-VII-2003 1, 19-VI-2004 3, 12A-VI-2006 1, 12C-VI-2006 1 and 4D-VII-2007 1.
2286. *Agrotis obliqua* (Sm.) (10660. *Agrotis obliqua* (Sm.)) (Oblique Dart) – 16A-V-2006 1 and 16B-V-2006 1.
2289. *Ochropleura implecta* Laf. (10891. *Ochropleura plecta* (L.)) (Flame-shouldered Dart) – 20-VI-2001 1.
2295. *Paradiarsia littoralis* (Pack.) (10992. *Paradiarsia littoralis* (Pack.)) (Labrador Dart) – 2-VII-1999 SR, 2-VII-2000 1, 8-VI-2001 2, 20-VI-2001 1, 12-VII-2002 1, 25B-VI-2003 1, 25C-VI-2003 1, 18-VII-2004 1, 12A-VI-2006 1, 12C-VI-2006 1 and 4D-VII-2007 1.
2300. *Noctua pronuba* (L.) (10035. *Noctua pronuba* (B. & McD.)) (Large Yellow Underwing) – 6A-VIII-2006 1 and 27A-VIII-2006 2.
2302. *Spaelotis clandestina* (Harr.) (10926. *Spaelotis clandestina* (Harr.)) (Clandestine Dart) – 2-VII-2000 1, 12-VII-2002 1, 21-VIII-2002 2, 25C-VI-2003 3, 18-VII-2004 1, 24-IX-2004 2, 21-VI-2005 1, 28A-VIII-2005 1, 27A-VIII-2006 1, 27B-VIII-2006 1, 4B-VII-2007 2 and 4D-VII-2007 1.
2303. *Spaelotis bicava* Laf. (Not in Hodges) – 20-VI-2001 1.
2304. *Eurois occulta* (L.) (10929. *Eurois occulta* (L.)) (Great Grey Dart) – 28A-VIII-2005 1 and 6A-VIII-2006 1.
2305. *Eurois astricta* Morr. (10930. *Eurois astricta* Morr.) (Great Brown Dart) – 18-VII-2004 3 and 28A-VIII-2005 1.
2306. *Eurois nigra* (Sm.) (10931. *Eurois nigra* (Sm.)) – 18-VII-2004 1 and 15-VIII-2004 1.
2313. *Xestia smithii* (Snell.) (10944. *Xestia smithii* (Snell.)) (Smith's Dart or Spotted Clay Dart) – 8-VIII-2001 3, 15-VIII-2004 1, 2A-VIII-2005 1, 2B-VIII-2005 5, 6A-VIII-2006 2, 6B-VIII-2006 1 and 27A-VIII-2006 1.
2322. *Xestia c-nigrum* (L.) (10942. *Xestia c-nigrum* (L.)) (Lesser Black-letter Dart) – 20-VI-2001 2.
2329. *Xestia perquiritata* (Morr.) (10962. *Anomogyna perquiritata* (Morr.)) (Divided Dart) – 6A-VIII-2006 1.
2335. *Agnorisma bugrai* (Koçak). (10954. *Xestia collaris* (G. & R.)) (Collared Dart) – 8-VIII-2001 1, 1-IX-2001 2, 15-VIII-2004 4 and 28A-VIII-2005 4, 27A-VIII-2006 1, 27B-VIII-2006 2 and 27C-VIII-2006 1.
2344. *Protolampra rufipectus* (Morr.) (11004. *Protolampra rufipectus* (Morr.)) (Red-breasted Dart) – 18-VII-2004 1 and 2B-VIII-2005 1 and 6A-VIII-2006 1.
- Abagrotis* spp. – 15-VIII-2004 3 and 28-VIII-2004 1.

2347. *Abagrotis trigona* (Sm.) (11018. *Abagrotis trigona* (Sm.)) – 10-IX-2002 1 and 2A-VIII-2005 1.
2353. *Abagrotis nanalis* (Grt.) (11038. *Abagrotis nanalis* (Grt.)) – 21-VIII-2002 1 and 15-VIII-2004 2.
2355. *Abagrotis hermina* Laf. (Not in Hodges) – 1-IX-2001 1, 12-VII-2002 1, 21-VIII-2002 2, 10-IX-2002 3, 18-VII-2004 1, 15-VIII-2004 5, 28-VIII-2004 1 and 28A-VIII-2005 1.
2357. *Abagrotis placida* (Grt.) group (11041. *Abagrotis placida* (Grt.) group) (Placid Dart) – 2A-VIII-2005 1, 2B-VIII-2005 1, 28A-VIII-2005 6, 6B-VIII-2006 1, 27B-VIII-2006 2 and 27C-VIII-2006 1. A taxonomic revision is needed in this group.
2358. *Abagrotis orbis* (Grt.) (11032.1. *Abagrotis orbis* (Grt.)) – 28A-VIII-2005 1.

DISCUSSION

An analysis of the data from the present study of the moths encountered in twelve major study areas in south-central Alberta, reveals that the present area (DI) is most similar (57.03) to the aspen parkland of the Buffalo Lake Conservation Area site (BL) and (49.61%) to Big Knife Provincial Park, and least similar (27.20%) to the aspen parkland of the Allen Hall acreage site (AH). Though quite different, more habitats in DI are similar to those of BL, and thus many similar food plants are present. The aspen woods of AH, on the other hand, have far fewer habitats than are present in DI. The higher number of plant species and the greater range of soil and microclimate habitats in the Dry Island area meet the ecological requirements of a greater number of moth species.

SUMMARY

Five hundred and eighty-nine species of moths and 25 butterflies and skippers are reported from Dry Island Buffalo Jump Provincial Park, exclusive of the Tolman Bridge area. If all species in the undetermined categories were named, the actual total would be around 650. The vast majority of these were not reported from Area 5 by Bowman (1951). Many are known, however, from Tolman Bridge about 15 km downstream (see Bird 2006). It is felt that the overall total can be brought to over 700 by further study. To put things into perspective, Pohl et al (2010) document 2367 species of Lepidoptera for Alberta.

A number of moths (a *Cauchas* (*Adela*), an *Aroga*, and some Coleophora taxa) collected in the area, appear to be undescribed species. One, *Pelochrista gelattana* was recently described (Wright 2007) and is otherwise known in Alberta only from Manyberries. Many prairie species, such as *Synanthedon polygona*, *Epiblema beningatum*, *Epinotia columbia* sensu R.L. Brown, *Mimoschinia rufofascialis*, *Nephothrix fernaldi*, *Toripalpus trabalis*, *Catastia actualis*, *Toripalpus trabalis*, *Platytes vobisne*, *Chaetoscelis bistrifaria*, *Catocala hermia*, *Conochares arizonae*, *Aseptis characta*, *Platyperigea meralis*, *Oncocnemis pallidior*, *Lacinipolia naevia*, *Tholera americana*, *Protogygia querula* and *Abagrotis trigona* reach their northern distribution limits here. Other species, such as *Epinotia albicapitana*, *Lipographis fenestrella*, *Leptostales ferruminaria*, *Sphinx drupiferarum* and *Acronicta radcliffei* have been seldom encountered in Alberta. The insect fauna of the present area, and that of Tolman Bridge (mentioned above), is of special interest due to the protected status of the areas, and to the large number of habitats that are present.

Most Dry Island Buffalo Jump Provincial Park collections prior to 2004 were from south-facing badland habitats. In 2004 a serious attempt was made to sample steep north-facing

slopes with white spruce in an area north of the “Dry Island”. This proved particularly worthwhile as many additional species were found.

The large number of species found in the Park to date indicates that it may be more biodiverse than any other area in Alberta and this provides strong support for the setting aside of the area as a Provincial Park where it receives special protection from agricultural and other commercial activities.

Of the 13 major areas involved in the present study, 35 species of moths were found only at Dry Island, exclusive of the Tolman Bridge area - *Cauchas*, *Elachista virgatula*, *Scythris eboracensis*, *Coleophora rosaevorella*, *Coleophora bidentella*, *Coleophora* JFL043, *Coleophora* JFL063, *Coleophora* JFL067, *Coleophora* JFL069, *Coleophora* JFL083, *Coleophora* JFL090, *Coleophora* JFL109, *Coleophora* JFL118, *Coleophora* JFL134, *Synanthedon polygoni* (Hy. Edw.), *Phtheochroa* near *vulneratana*, *Hystrichophora ochreicostana*, *Hystrichophora vestaliana*, *Epiblema benignatum*, *Epinotia crenana*, *Dichrorampha sedatana*, *Oidaematophorus grisescens*, *Platytes vobisne*, *Udea radiosalis*, *Eupithecia mutata*, *Eupithecia multistrigata*, *Dasychira plagiata*, *Drasteria adumbrata*, *Ponometia elegantula*, *Lacinipolia naevia*, *Euxoa olivalis*, *Euxoa nevada* and *Abagrotis nanalis*.

ACKNOWLEDGEMENTS

Wayne Nordstrom, Gerald Bennett and Ksenija Vujnovic helped with the procurement of Letters of Authority to collect Lepidoptera in the Park. Sincere thanks are extended to Gary Anweiler for verifying or identifying macromoths and Greg Pohl for his help in identifying various micromoths; also to Chris Schmidt to verifying Arctiids and Geometrids and to George Balogh for identifying the *Eupithecias*. Jean-François Landry identified the *Coleophora* species and Doug Macaulay identified the Pterophoridae. Jason Dombroskie provided help with some of the Tortricidae. Even though others helped, I personally take responsibility for the identification of the species mentioned in this report.

Felix Sperling and Danny Shpeley facilitated the study of specimens in the Bowman Collection of the Strickland Museum, and Greg Pohl did the same for the Northern Forest Research Centre Entomology Collection. Ernest Mengersen is thanked for his company in the field on several occasions and for allowing access to the extensive collection at Olds College. Wayne Nordstrom and Gerry Bennett are thanked for their help in obtaining Letters of Authority to allow the collecting of Lepidoptera in Dry Island Buffalo Jump Provincial Park.

LITERATURE CITED

- Adamski, David. 2000. A new species of *Glyphidocera* from south-central Colorado (Lepidoptera: Gelechioidea: Glyphidoceridae). *Faberies* 25(4): 69-78.
- Bird, C.D. 2002. Lepidoptera of Dry Island Provincial Park, a first report. Report prepared for Alberta Parks and Protected Areas. 10 pp.
- Bird, C.D. 2003. Lepidoptera of Dry Island Provincial Park, a second report. Report prepared for Alberta Parks and Protected Areas. 14 pp.
- Bird, C.D. 2004. Lepidoptera of the Tolman Bridge area, a second report. Report prepared for Alberta Parks and Protected Areas. 24 pp.
- Bird, C.D. 2004. Lepidoptera of Dry Island Buffalo Jump Provincial Park, a third report. Report prepared for Alberta Parks and Protected Areas. 18 pp.

- Bird, C.D. 2005. Lepidoptera of Dry Island Buffalo Jump Provincial Park, 1999-2004. Report prepared for Alberta Parks and Protected Areas. 24 pp.
- Bird, C.D. 2006. Lepidoptera of Dry Island Buffalo Jump Provincial Park, 1999-2005. Report prepared for Alberta Parks and Protected Areas. 27 pp.
- Bird, C.D. 2007. Lepidoptera of Dry Island Buffalo Jump Provincial Park, 1999-2006. Report prepared for Alberta Parks and Protected Areas. 35 pp.
- Bird, C.D. 2008. Lepidoptera of Dry Island Buffalo Jump Provincial Park, 1999-2007. Report prepared for Alberta Parks and Protected Areas. 38 pp.
- Bird, C.D. 2009. Lepidoptera of Dry Island Buffalo Jump Provincial Park, 1999-2008. Report prepared for Alberta Parks and Protected Areas. 40 pp.
- Bird, C.D. 2010. Lepidoptera of Dry Island Buffalo Jump Provincial Park, 1999-2009. Report prepared for Alberta Parks and Protected Areas. 41 pp.
- Bowman, Kenneth 1951. An annotated list of the Lepidoptera of Alberta. *Can. J. Zoology* 29: 121-165.
- Campbell, T.Y. 1983. Dry Island Buffalo Jump Provincial Park Master Planning Study; Biophysical Resource Overview and Assessment. Resource Planning Section, Alberta Recreation & Parks, Gov. Alberta. 67 pp + appendixes and maps.
- Hodges, R. W. (ed.). 1983. Check List of the Lepidoptera of America North of Mexico. E.W. Classey Ltd. & The Wedge Entomological Research Foundation.
- Kondla, N. & W. Smith. 1972. An ecological survey of Dry Island Buffalo Jump Provincial Park. Dept. Lands & Forests, Gov. Alberta. 55 pp.
- Lafontaine, J. D. & B.C. Schmidt. 2010. Annotated check list of the Noctuoidea (Insecta, Lepidoptera) of North America north of Mexico. *ZooKeys* 40: 1-239.
- Landry, B. & J.-F. Landry. 2004. The genus *Alucita* in North America, with description of two new species (Lepidoptera: Alucitidae). *The Canadian Entomologist* 136: 553-579.
- Lohr, Lloyd. 1993. Dry Island Buffalo Jump Provincial Park Lists. Birds. Report submitted to Alberta Parks and Recreation.
- Neunzig, H. H. 2003. The Moths of America North of Mexico. Fasc. 15.5. Pyraloidea, Pyralidae (part), Phycitinae (part). The Wedge Entomological Research Foundation. Pp. 1-338.
- Nordstrom, W. & K. Wilkinson. 1980. Dry Island Buffalo Jump Provincial Park – Preliminary Recommendations and Management Considerations. Alberta Recreation & Parks, Gov. Alberta.
- Pohl, G., C. D. Bird, J.-F. Landry & G. Anweiler. 2005. New records of Microlepidoptera in Alberta, Canada. *J. Lep. Soc.* 59(2): 61-82.
- Pohl, G. R., G. G. Anweiler, B. C. Schmidt and N. G. Kondla. 2010. An annotated list of the Lepidoptera of Alberta, Canada. *ZooKeys* 38: 1-549.
- Pohl, G. R., J. J. Dombroskie, J.-F. Landry, C. D. Bird and V. Nazari. 2011. Errata and first update to the 2010 checklist of the Lepidoptera of Alberta. *ALG Newsletter Spring 2011*, pp. 10-16.
- Schintlmeister, A. 1983 [1984]. Zum status einiger fernöstlicher taxa. *Notodontiden-Studien I. Zeitschrift der Arbeitsgemeinschaft Österreichischer Entomologen* 35: 106-111.
- Wallis, C. 1977. Red Deer River Resource Evaluation. Alberta Recreation, Parks & Wildlife, Gov. Alberta.
- Wright, D. J. 2007. Taxonomy of four species of Eucosmini (Tortricidae) associated with *Pelochrista corosana* (Walsingham) including a new synonymy and description of a new species. *J. Lep. Soc.* 61(3): 117-124.
- Wright, D. J. 2008. Nearctic Eucosmini (Tortricidae) associated with *Pelochrista occipitana* (Zeller) and *Eucosma biquadrana* (Walsingham): two new synonymies and four new

species. *J. Lep Soc.* 62(4): 216-231. This is an outstanding paper with excellent descriptions, illustrations and discussion. It is another in a series of papers by the author on the Eucosmini.

USEFUL ONLINE INFORMATION SOURCES ON MOTHS

Information on many of our Alberta moths can be found at the Entomology Collection Search site of the E.H. Strickland Entomological Museum of the Department of Biological Sciences at the University of Alberta: <http://www.entomology.ualberta.ca/>.

Illustrations of Alberta macromoths can be found at a site put together by D. Lafontaine and J. Troubridge called "The Moths of Canada":
http://www.cbif.gc.ca/spp_pages/misc_moths/phps/mothindex_e.php.

Illustrations on many of the western American macromoths can also be found on a site put together by The Moth Photographers Group:
<http://www.origins.tv/MothPhotographersGroup/WestPlates.htm>.

D. Lynn Scott has a web site with natural photos of over 400 species of moths that she has found in Ottawa, Ontario (<http://acleris.com/dls/mothindex.html>). As many of the species also occur in Alberta, these images can be quite helpful

USEFUL BOOKS ON MOTHS

- Covell, Charles V., Jr. 1984. *A Field guide to Moths; Eastern North America*. Houghton, Mifflin Co., Boston, New York.
- Handfield, Louis. 1999. *Le Guide des Papillons du Quebec*. Vol. 1. Broquet, Boucherville, QC.
- Handfield, Louis. 2011. *Le Guide des Papillons du Quebec*. Vol. 1. Partie 1 & 2, 1352 pp. plus 166 plates.
- Ives, W.G. H. & H. R. Wong. 1988. *Tree and Shrub Insects of the Prairie Provinces*. Can. Forestry Serv., Northern For. Centre, Inf. Rept. NOR-X-292.
- Powell, J. A. & P. A. Opler. 2009. *Moths of Western North America*. Univ. California Press. 369 pp.

APPENDIX

Collection dates, sites and other details

- 11 July 1999 – Diurnal, Butterfly Count in area from north lookout to picnic area.
- 2 July 2000 – Diurnal, Butterfly Count in area from north lookout to picnic area.
- 8 June 2001 – UV trap, S-facing slope & vicinity of picnic area, 51.93, 112.97.
- 20 June 2001 – UV trap, S-facing slope & vicinity of picnic area, 51.93, 112.97. With Ernest Mengersen.
- 8 July 2001 – Diurnal, Butterfly Count in area from north lookout to picnic area.
- 8 August 2001 – UV trap, S-facing slope & vicinity of picnic area, 51.93, 112.97. With Ernest Mengersen.
- 1 September 2001 – UV trap, S-facing slope & vicinity of picnic area, 51.93, 112.97. An ALG outing with Gary & Judy Anweiler, Ernest Mengersen, Felix Sperling, Rob Hughes & Bruce Christensen.

- 4 June 2002 – UV trap, S-facing slope & vicinity of picnic area, 51.93, 112.97. With Ernest Mengersen.
- 27 June 2002 – UV trap, S-facing slope & vicinity of picnic area, 51.93, 112.97.
- 7 July 2002 – Diurnal, Butterfly Count in area from north lookout to picnic area.
- 21 August 2002 – UV trap, S-facing slope & vicinity of picnic area, 51.93, 112.97.
- 10 September 2002 – UV trap, S-facing slope & vicinity of picnic area, 51.93, 112.97.
- 21A May 2003 – UV trap, vicinity of picnic area, 51.936, 112.961, 722 m.
- 21B May 2003 – UV trap, S-facing slope, 51.939, 112.964, 760 m.
- 25A June 2003 – UV trap, Section 26, grassland above badlands, vicinity of old windmill, 51.863, 113.014, 800 m.
- 25B June 2003 – UV trap, Section 26, grassland, SE-facing slope 100 yards south of old windmill, 51.86323, 113.01442, 810 m.
- 25C June 2003 – UV trap, Section 26, S-facing slope 300 yards SE of old windmill, 51.86294, 113.01372, 800 m.
- 6 Jul 2003 – Diurnal, Butterfly Count in area from north lookout to picnic area.
- 12A July 2003 – UV trap, vicinity of picnic area, 51.936, 112.961, 722 m.
- 12B July 2003 – UV trap, S-facing slope, 51.939, 112.965, 760 m.
- 19A June 2004 – Diurnal, Badland terrain, north trail to “Dry Island”, 51.95, 112.95, 800-850 m.
- 19B June 2004 – UV trap, steep N-facing slope, mixed woods, north of “Dry Island”, 51.959, 112.746, 836 m.
- 11 July 2004 – Diurnal, Butterfly Count in area from north lookout to picnic area.
- 18A July 2004 – Diurnal, badland terrain, north of “Dry Island”, 51.95, 112.95, 850 m.
- 18N July 2004 – UV trap, steep N-facing slope, mixed woods, north of “Dry Island”, 51.959, 112.746, 836 m.
- 18SE July 2004 – UV trap, SE facing badland slope, north of “Dry Island”, 51.958, 112.942, 823 m.
- 15N August 2004 – UV trap, steep N-facing slope, mixed woods, north of “Dry Island”, 51.959, 112.746, 836 m.
- 15SE August 2004 – UV trap, SE facing badland slope, north of “Dry Island”, 51.958, 112.942, 823 m.
- 28N August 2004 – UV trap, steep N-facing slope, mixed woods, north of “Dry Island”, 51.959, 112.746, 836 m.
- 28SE August 2004 – UV trap, SE facing badland slope, north of “Dry Island”, 51.958, 112.942, 823 m.
- 24SE September 2004 – UV trap, SE facing badland slope, north of “Dry Island”, 51.958, 112.942, 823 m.
- 24N September 2004 – UV trap, steep N-facing slope, mixed woods, north of “Dry Island”, 51.959, 112.746, 836 m.
- 22A April 2005 – UV trap, SE facing badland slope, north of “Dry Island”, 51.958, 112.942, 823 m.
- 22B April 2005 – UV trap, Steep N-facing slope, mixed woods, north of “Dry Island”, 51.959, 112.746, 836 m.
- 21N June 2005 – UV trap, Steep N-facing slope, mixed woods, north of “Dry Island”, 51.959, 112.746, 836 m.
- 21SE June 2005 – UV trap, SE facing badland slope, north of “Dry Island”, 51.958, 112.942, 823 m.
- 10 July 2005 – Diurnal, Butterfly Count in area from north lookout to picnic area.
- 2A August 2005 – UV trap, SE facing badland slope, north of “Dry Island”, 51.958, 112.942, 823 m.
- 2B August 2005 – UV trap, steep N-facing slope, mixed woods, north of “Dry Island”, 51.959, 112.746, 836 m.

- 28A August 2005 – UV trap, SE facing badland slope, north of “Dry Island”, 51.958, 112.942, 823 m.
- 28B August 2005 – UV trap, steep N-facing slope, mixed woods, north of “Dry Island”, 51.959, 112.746, 836 m.
- 16A May 2006 – UV trap, SE facing badland slope, north of “Dry Island”, 51.958, 112.942, 823 m.
- 16B May 2006 – UV trap, steep N-facing slope, mixed woods, north of “Dry Island”, 51.959, 112.746, 836 m.
- 12 June 2006 – Diurnal, badlands, mainly S-facing, north and NE of the picnic area, 51.94, 112.96, abt 800 m.
- 12A June 2006 UV trap, Edge of riverine forest, beside aspen & silverwillow, picnic area, 51.936, 112.961, 720 m.
- 12B June 2006 – UV trap, bottom of draw with *Juniperus horizontalis*, north of picnic area, 51.939, 112.966, 748 m.
- 12C June 2006 – UV trap, prairie near aspen, north of picnic area, 51.943, 112.969, 822 m.
- 9 July 2006 – Diurnal, Canadian Nature Federation field trip in area from north lookout to picnic area.
- 16 July 2006 – Diurnal, Annual Butterfly Count in area from north lookout to picnic area.
- 6A August 2006 – UV trap, Steep N-facing slope, mixed woods, north of the “Dry Island”, 51.959, 112.746, 836 m.
- 6B August 2006 – UV trap, SE facing badland slope, north of the “Dry Island”, 51.958, 112.942, 823 m.
- 6C August 2006 – UV trap, steep, S-facing grassy slope with *Artemisia biennis* & *longifolia*, north of the “Dry Island”, 51.95728, 112.94668, 850 m.
- 27A August 2006 – UV trap, Steep N-facing slope, mixed woods, north of the “Dry Island”, 51.959, 112.746, 836 m.
- 27B August 2006 – UV trap, SE facing badland slope, north of the “Dry Island”, 51.958, 112.942, 823 m.
- 27C August 2006 – UV trap, steep, S-facing grassy slope with *Artemisia biennis* & *longifolia*, north of the “Dry Island”, 51.95728, 112.94668, 850 m.
- 30A May 2007 – UV trap, steep N-facing slope, mixed woods, north of the “Dry Island”, 51.959, 112.746, 836 m.
- 30B May 2007 – UV trap, steep N-facing slope with *Picea glauca*/*Populus tremuloides*/shrubs, north of the “Dry Island”, 51.959, 112.941, 838 m.
- 30C May 2007 – UV trap, SE facing badland slope with *Picea glauca* and *Populus tremuloides*, north of the “Dry Island”, 51.958, 112.942, 823 m.
- 4B July 2007 – UV trap, steep N-facing slope with *Picea glauca*, *Populus tremuloides* and shrubs, north of the “Dry Island”, 51.959, 112.746, 836 m.
- 4C July 2007 – UV trap, SE facing badland slope with *Picea glauca*, *Populus tremuloides* and shrubs, north of the “Dry Island”, 51.958, 112.942, 823 m.
- 4D July 2007 – UV trap, steep S-facing badland slope, grassland near shrubs, north of the “Dry Island”, 51.957, 112.947, 850 m.
- 8 July 2007 – Diurnal, Annual Butterfly Count in area from north lookout to picnic area.
- 6 July 2008 – Diurnal, Annual Butterfly Count in area from north lookout to picnic area.
- 5 July 2009 – Diurnal, Annual Butterfly Count in area from north lookout to picnic area.
- 4 July 2010 – Diurnal, Annual Butterfly Count in area from north lookout to picnic area.
- 10 July 2011 – Diurnal, Annual Butterfly Count in area from north lookout to picnic area.