

LEPIDOPTERA OF BIG KNIFE PROVINCIAL PARK, 2001-2011

Charles Durham Bird, 8 March 2012
Box 22, Erskine, AB, T0C 1G0
cdbird@xplornet.com

No major collections were made in the area in 2010 and 2011. The present report includes a number of redeterminations. It also follows the up-to-date order and taxonomy of Pohl et al. (2010), rather than that of Hodges et al. (1983).

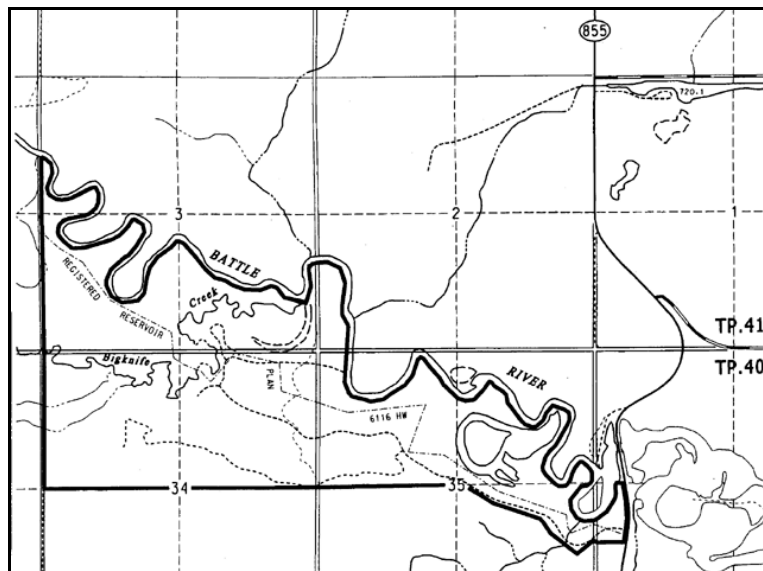


Buffalo Lake Naturalist's 15 September 2002 field trip in Big Knife Provincial Park, Jodi Vincent and Charles Bird kneeling; Ann Bird, Mary Muhlbach, Wayne Kinsella, Nora and Hugh Charles, Lorreen and John Beggs in the back.

THE AREA

Big Knife Provincial Park, formally established in 1962, is located in the valley of the Battle River, 40 km northeast of Stettler. Located in the Aspen Parkland, it has a wide variety of relatively undisturbed vegetation types ranging from open grasslands through shrublands (buckbrush, silver willow, rose) to deciduous (aspen and balsam poplar), mixed wood and coniferous (white spruce) communities. It also has some badland topography.

The Park has an interesting assortment of species making up the fauna and flora as it contains coniferous foothills/boreal elements on north-facing slopes, prairie elements on the escarpment and at various places lower down, as well as riverine forest elements near the Battle River. The badland terrain and alkali flats with *Opuntia fragilis* are also of interest.



Map of Big Knife Provincial Park.

An ecological survey, with a listing of the local flora and fauna, was carried out by Ebel & Finkelman (1973). The next study was that of an 11 July 1993 reconnaissance by Bird who studied the plants (1993) and Lloyd Lohr (1993) who made notes on the birds and mammals. Checklists of the plants, birds and mammals were prepared by McIsaac & Macdonald in 1994. These were followed by a detailed Biophysical Inventory by Karpuk & Meijer (1999). Reports on the moths of the area have been prepared by Bird (2002, 2003, 2004, 2005, 2006) and by Jodi Vincent (2002). The results of these studies are included in the present report. Specimens collected by Jodi Vincent have the initials "JV". Also included are some moths collected 17 Aug 2002 by C. Bruce Christensen, these are indicated by "CBC".



A UV trap set up among awnless brome, silver willow, willow and aspen, May 28, 2004.

THE PRESENT RESEARCH

As no information was available on the insects of the Park, the present author, with the assistance of Wayne Nordstrom, obtained a Letter of Authority to allow the collecting of Lepidoptera in the Park in 2001. Due to time constraints, as the author was carrying out more intensive studies at five other locations, it was possible to visit the area only on 23 May 2001 of that year. Two ultraviolet (UV) traps were set out that night, one in deciduous woodland and the other in coniferous woodland. The catch was surprisingly good. In 2002, an additional 6 trap nights occurred: May 1, June 3 and 12, July 9, August 8, and September 11. A day hike with the Buffalo Lake Naturalists and Jodi Vincent also took place on September 15. The 2002 results are reported in Bird (2003) and Vincent (2003). In 2003, research was carried out in the area on six additional nights: May 14, June 17, July 8 and 30, August 22 and September 13. Some moths collected by Jodi Vincent in 2003 were reported in Bird (2004). Another day hike with the Buffalo Lake Naturalists and Abigail Knight took place of September 14, 2003. In 2004, work was carried out on the nights of May 28, June 22 and August 19. In 2005, moths were collected on the night of June 29. In 2006, the area was sampled four times: May 30, July 4, August 25 and September 9. In 2007, studies were made on May 11 and August 29. In 2008, studies were made at three sites on July 25. In 2009 studies were made at three sites on August 30. Details of the collection sites are given in the Appendix. The present report incorporates the results of studies made from 2001-2008 (Bird 2002, 2003, 2004, 2005, 2006, 2007, 2008, 2009; Vincent 2002). It also includes a number of corrections to identifications in the previous reports.

The writer has received no external funding for this project.

BACKGROUND

Provincial Parks and other areas where natural vegetation is protected are of great value as the flora and fauna present in them is typical of what was in Alberta before widespread agricultural activities replaced them with flora and fauna that was reduced in numbers and

made up of species that were associated with cultivated grains and hay crops. As a result, many of Alberta's "rare and endangered" species are now found only, or mainly, in such protected areas.

There is still much to be learned about the distribution and status of lepidopteran (moth and butterfly) species in south-central Alberta. Baseline studies of this sort provide information that helps characterize the species associated with various ecoregions, in the present case Aspen Parkland; determine the status designations (abundant, common, rare, endangered) of various species; show the effects of grazing on species composition and abundance; and allow the examination of many other parameters, including phenology, dry vs. wet years, and outbreaks of various species such as forest tent caterpillar.

The author is a member of the Alberta Lepidopterist's Guild, the purpose of which is to encourage study of Alberta's moths and butterflies.

SPECIMEN DISPOSITION

All specimens collected by the writer presently reside in his collection but most will eventually go to the University of Alberta Strickland Museum (UASM), and some will be deposited in the Canadian National Collection (CNC) in Ottawa and the Northern Forest Research Centre (NFRC) in Edmonton. All specimens have been databased and the information on verified material can be viewed at <http://www.entomology.ualberta.ca/searching.php>.

CHECKLIST

Pohl et al (2010) have put together an up-to-date annotated list of the Lepidoptera of Alberta. They include 2367 species, many more than those mentioned by Bowman (1951). This list incorporates recent changes in taxonomy of all groups according to various literature sources, including those listed for the Noctuoidea by Lafontaine & Schmidt (2010). In previous reports, the order and terminology, were that of the "Check List of the Lepidoptera of America North of Mexico" (1983) edited by R.W. Hodges. The species order and taxonomy in this report is that of Pohl et al (2010) followed by that in Hodges (1983). Common names are mentioned in those cases where such names are known.

Except for material gathered by Jodi Vincent and Bruce Christensen, all collections were made by the author. While most of the larger or macromoths are relatively well known, the same cannot be said for many of the smaller or micromoths. Identifications, especially of the latter, can be difficult or are at present impossible, until such time as revisionary studies are made. Also, genitalic dissection and examination is necessary for positive identification in some groups. For these reasons, some of the determinations should be regarded as tentative. The scientific names of the species are followed by the date-month-year of the collection and the number of individuals mounted; an "SR" indicates a sight record. Common names are added when known.

Kenneth Bowman's (1951) list of the Lepidoptera of Alberta presents all species known at that time and gives the distribution of each according to 21 Areas. His areas 5, 8 and 10 essentially cover all of south-central Alberta, with the study area being in Area 8. Most of Bowman's records are from Area 10, which includes Edmonton, so most of the species found in the following list would be additions to his Area 8.

FAMILY UNKNOWN

Unknown microlep – 9-VII-2002 1.

HEPIALIDAE – Ghost Moths and Swifts

5. *Gazoryctra novigannus* (B. & Benj.) (29. *Gazoryctra novigannus* (B. & Benj.) (Ghost Moth)) – 1-IX-2002 1 JV, 22A-VIII-2003 1, 9C-IX-2006 1, 29A-VIII-2007 1 and 29B-VIII-2007 1.
 8. *Sthenopsis purpurascens* (Pack.) (19. *Sthenopsis purpurascens* (Pack.)) (Large Ghost Moth) - 24-VII-2002 1 JV, 25B-VII-2008 1 and 25C-VII-2008 1.

PRODOXIDAE – Prodoxid Moths**Prodoxidae, Lamproniinae**

22. *Lampronia sublustris* Braun (185. *Tanysaccus sublustris* Braun) – 12-VI-2002 2. This may be a synonym of *Lampronia aenescens*.

TINEIDAE – Fungus Moths**Tineidae, Tineinae**

44. *Tinea irrepta* Braun (399. *Tinea irrepta* Braun) – 17A-VI-2003 1, 8A-VII-2003 1, 30V-VII-2003 1, 22-VI-2004 1, 19-VIII-2004 4, 29A-VI-2005 1, 4A-VII-2006 1, 4C-VII-2006 1, 24C-VII-2008 1 and 30B-VIII-2009 1.
 47. *Niditinea orleansella* (Cham.) (412. *Niditinea orleansella* (Cham.)) – 25B-VII-2008 1.
 51. *Monopis spilotella* Teng. (421. *Monopis spilotella* Tengström) – 19-VIII-2004 1 and 25B-VII-2008 1.

ACROLOPHIDAE – Tube Moths

54. *Amydria effrentella* Clem. (334. *Amydria effrentella* Clem.) – 9-VII-2002 1, 8-VIII-2002 1, 30B-VII-2003 1 and 30C-VII-2003 1.

GRACILLARIIDAE – Gracilariid Moths**Gracillariidae, Gracillariinae**

- Caloptilia* sp. – 23-V-2001 1 and 29A-VIII-2007 1.
 66. *Caloptilia alnivorella* (Cham.) (587. *Caloptilia alnivorella* (Cham.)) (Alder Leafminer) – 30A-BIII-2009 1 and 30B-VIII-2009 1.
 Not in Pohl et al. (Sp. nr. 595. *Caloptilia bimaculatella* (Ely)) – 17A-VI-2003 1.
 73. *Caloptilia invariabilis* (Braun) (609. *Caloptilia invariabilis* (Braun)) (Cherry Leaf-cone Caterpillar) – 23-V-2001 1, 1-V-2002 1, 19-VIII-2004 1 and 11B-V-2007 1. Originally determined as *Caloptilia betulivora* McD. The specimens are probably *C. invariabilis* (Pohl et al. 2010).

82. *Parornix conspicuella* (Dietz) (669. *Parornix conspicuella* (Dietz)) – 17A-VI-2003 1, 29A-VIII-2007 1 and 25A-VII-2008 1.
 83. *Acrocercops astericola* (F. & B.) (692. *Acrocercops astericola* (F. & B.)) – 29A-VI-2005 1.

Gracillariidae, Lithocolletinae

85. *Phyllonorycter prob apparella* (Braun) (798. *Phyllonorycter prob tremuloidella* (Braun) (Aspen Leaf Miner) – 23-V-2001 1 and 27-V-2004 1.

YPONOMEUTIDAE – Ermine and Needleminer Moths

Yponomeutidae, Argyresthiinae

- Argyresthia* sp. – 30A-VIII-2009 1.
 101. *Argyresthia oreasella* (Clem.) (2467. *Argyresthia oreasella* (Clem.)) (Cherry Shoot Borer) – 25B-VII-2008 2.
 103. *Argyresthia pygmaella* (Hbn.) (2474. *Argyresthia pygmaella* (Hbn.)) – 19-VIII-2004 1.

PLUTELLIDAE – Plutellid Moths

104. *Ypsolopha canariella* (Wlsm.) 2371. *Ypsolopha canariella* (Wlsm.) (Canary Ypsolopha Moth) – 30B-VII-2003 1, 22C-VIII-2003 1, 19-VIII-2004 2, 9C-IX-2006 1, 25A-VII-2008 1, 25C-VII-2008 1 and 30A-VIII-2009 1.
 106. *Ypsolopha dentiferella* (Wlsm.) (2376. *Ypsolopha dentiferella* (Wlsm.)) – 8-VIII-2002 1, 30B-VII-2003 1, 29A-VIII-2007 1 and 25C-VII-2008 1.
 108. *Ypsolopha falciferella* (Wlsm.) (2380. *Ypsolopha falciferella* (Wlsm.)) – 1-V-2002 3 and 14A-V-2003 1.
 114. *Plutella xylostella* (L.) (2366. *Plutella xylostella* (L.)) (Diamondback Moth) – 23-V-2001 1, 30A-VII-2003 1, 30C-VII-2003 1, 22C-VIII-2003 1, 13A-IX-2003 1, 13B-IX-2003 1, 19-VIII-2004 1 and 9B-IX-2006 1.
 115. *Pseudoplutella porectella* (L.) (2363. *Plutella porectella* (L.)) – 23-V-2001 1.

ELACHISTIDAE – Concealer Moths

Elachistidae, Depressariinae

134. *Agonopterix rosaciliella* (Bsk.) (876. *Agonopterix rosaciliella* (Bsk.)) – 9B-IX-2006 1.
 138. *Agonopterix argillacea* (Wlsm.) (889. *Agonopterix argillacea* (Wlsm.)) – 23-V-2001 1, 1-V-2002 4 and 30C-VII-2003 1.
 143. *Depressariodes ciniflonella* (Lienig & Zell.) (908. *Depressariodes ciniflonella* Lienig & Zell.) – 22A-VIII-2003 1.
 146. *Semioscopis packardella* (Clem.) (912. *Semioscopis packardella* (Clem.)) – 23-V-2001 2.
 147. *Semioscopis merricella* Dyar (913. *Semioscopis merricella* Dyar) – 1-V-2002 1, 14A-V-2003 2 and 17-V-2003 1 JV. Reported as new for Alberta in Pohl et al. (2005).
 148. *Semioscopis inornata* Wlsm. (914. *Semioscopis inornata* Wlsm.) – 1-V-2002 1.
 149. *Semioscopis megamicrella* Dyar (915. *Semioscopis megamicrella* Dyar) – 1-V-2002 2 and 14A-V-2003 1.
 150. *Semioscopis aurorella* Dyar (916. *Semioscopis aurorella* Dyar) – 1-V-2002 2.

153. *Depressaria pastinacella* (Dup.) (922. *Depressaria pastinacella* (Dup.)) (Parsnip Webworm Moth) – 14A-V-2003 1.

157. *Nites grotella* (Rob.) (942. *Nites grotella* (Rob.)) – 25B-VII-2008 1. Rare in Alberta.

Elachistidae, Elachistinae

Species indet. – 9-VII-2002 1, 17-VI-2003 2, 8-VII-2003 1 and 4C-VII-2006 2.

GLYPHIDOCERIDAE – Glyphidocerid Moths

189. *Glyphidocera hurlberti* Adamski (Not in Hodges) – 8B-VII-2003 1. This species was described in Adamski (2000).

COLEOPHORIDAE – Coleophorid Moths

Coleophoridae, Coleophorinae

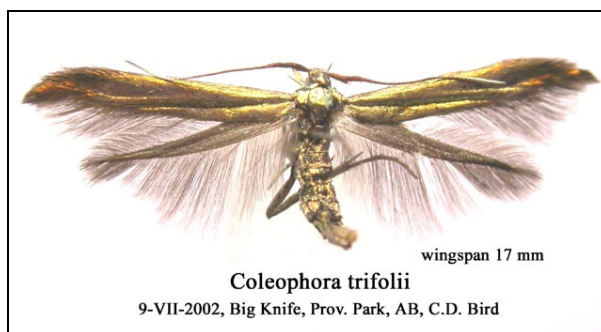
Coleophora spp. – 8-VIII-2002 1, 30B-VII-2003 2, 19-VIII-2004 1, 29A-VI-2005 1, 4B-VII-2006 1, 25B-VII-2008 1 and 25C-VII-2008 1. The above specimens are currently with Dr. J.-F. Landry who is doing a North American monograph of the group. Some of the specimens may be of species that remain to be described.

200.1. *Coleophora cretaticostella* Clem. (1283. *Coleophora cretaticostella* Clem.) – 27-V-2004 1. Reported as new for Alberta in Pohl et al 2011.

208. *Coleophora rosacella* Clem. (1316. *Coleophora rosacella* Clem.) – 9-VII-2002 1, 8A-VII-2003 1 and 29A-VI-2005 4.

209.1. *Coleophora sparsipuncta* Heinr. (1323. *Coleophora sparsipuncta* Heinr.) – 8-VIII-2002 1 and 30-VII-2003 1. Reported as new for Alberta in Pohl et al 2011.

214. *Coleophora sparsipulvella* Cham. (1352. *Coleophora sparsipulvella* Cham.) – 30-VII-2003 3 and 4B-VII-2006 1.



222. *Coleophora trifolii* (Curt.) (1388. *Coleophora trifolii* (Curt.)) (Large Clover Case-bearer) – 9-VII-2002 1, 18-VII-2002 1 JV, 8A-VII-2003 1, 8B-VII-2003 1, 29A-VI-2005 1, 4A-VII-2006 1, 4B-VII-2006 1, 25B-VII-2008 1 and 25C-VII-2008 1.

229.1. *Coleophora quadruplex* McD. (1350. *Coleophora quadruplex* McD.) – 4B-VII-2006 1. Reported as new for Alberta in Pohl et al 2011.

Coleophora JFL002 – 9-VII-2002 1.

Coleophora JFL035 – 8-VII-2002 1 and 4C-VII-2006 1.

Coleophora JFL084 – 22-VIII-2003 1 and 19-VIII-2004 7.

Coleophora JFL092 – 26-VIII-2002 1.

Coleophora JFL108 – 17-VI-2003 1.

Coleophoridae, Momphinae

230. *Mompha idaei* (Zell.) (1457. *Mompha tricristatella* (Cham.)) – 9-VII-2002 1.

Coleophoridae, Blastobasinae

Dr. David Adamski, is monographing the group for the Moths of North America series. The determinations below are tentative.

Species indet. – 11-IX-2002 1.

233. *Holcocera immaculella* McD. (1221. *Holcocera immaculella* McD.) – 9-VII-2002 1.

235. *Hypatopa titanella* McD. (1156. *Hypatopa titanella* McD.) – 4B-VII-2006 1.

COSMOPTERYGIDAE – Cosmopterygid Moths

Species indet. – 17-VI-2003 1.

GELECHIIDAE – Gelechiid Moths

Species indet. – 23-V-2001 4, 3-VI-2002 2, 9-VII-2002 2, 8-VIII-2002 1, 14A-V-2003 2, 14B-V-2003 1, 17A-VI-2003 6, 17B-VI-2003 1, 8A-VII-2003 2, 8B-VII-2003 1, 27A-VII-2003 1, 30A-VII-2003 2, 30B-VII-2003 2, 30C-VII-2003 1, 22A-VIII-2003 1, 22B-VIII-2003 2, 13B-IX-2003 2, 27-V-2004 6, 22-VI-2004 3, 19-VIII-2004 6, 29A-VI-2005 1, 4A-VII-2006 1, 29A-VIII-2007 1 and 25B-VII-2008 3. Little is known about many of the species in this family and it may be many years before some of these specimens are determined or described.

Gelechiidae, Gelechiinae, Litini

256. *Coleotechnites blastovora* McLeod (1796. *Coleotechnites blastovora* McLeod) – 23-V-2001 2, 14A-V-2003 2, 22-VI-2004 1 and 11A-V-2007 1.

263. *Coleotechnites piceaella* (Kft.) (1826. *Coleotechnites piceaella* (Kft.)) (Orange Spruce Needleminer) – 25B-VII-2008 1.

267. *Xenolechia velatella* (Bsk.) (1880. *Xenolechia velatella* (Bsk.)) – 3-VI-2002 1, 14A-V-2003 6 and 4A-VII-2006 1.

Gelechiidae, Gelechiinae, Gelechiini

271. *Prolita variabilis* (Bsk.) (1902. *Lita variabilis* (Bsk.)) – 27A-VIII-2003 1 and 30B-VIII-2009 1.

282. *Gelechia lynceella* Zell.) (1946. *Gelechia lynceella* Zell.) – 8B-VII-2003 1 and 22-VI-2004 1.

Gelechiidae, Gelechiinae, Gelechiini

288. *Chionodes landryi* Hodges (Not in Hodges) – 8A-VII-2003 1.

291. *Chionodes obscuruscella* (Cham.) (2099. *Chionodes obscuruscella* (Cham.)) (Boxelder Leafworm) – 19-VIII-2004 1, 29A-VIII-2007 1, 30A-VIII-2009 1 and 30B-VIII-2009 1.

292. *Chionodes mediofuscella* (Clem.) (2093. *Chionodes mediofuscella* (Clem.)) – 23-V-2001 1, 1-VI-2002 1, 3-VI-2002 1, 12-VI-2002 1, 17A-VI-2003 1, 17B-VI-2003 1, 17C-VI-2003 1, 27-V-2004 2, 22-VI-2004 1, 19-VIII-2004 1 and 30A-V-2006 2.
293. *Chionodes terminimaculella* (Kft.) (2117. *Chionodes terminimaculella* (Kft.)) – 23-V-2001 1, 3-VI-2002 3, 27-V-2004 1 and 30C-V-2006 1.
300. *Chionodes psiloptera* (B. & Bsk.) (2111. *Chionodes psilopterus* (B. & Bsk.)) – 8A-VII-2003 1, 27-V-2004 3, 29A-VI-2005 1, 4B-VII-2006 1, 4C-VII-2006 2, 25A-VII-2008 1 and 25C-VII-2008 1.
317. *Filatima abactella* (Clarke) (2127. *Filatima abactella* (Clarke)) – 12-V-2002 3, 3-VI-2002 2, 17A-VI-2003 1, 17C-VI-2003 1, 8B-VII-2003 1, 28A-V-2004 14 SR, 28B-V-2004 9 SR, 30B-V-2006 1 and 30C-V-2006 1.

Gelechiidae, Gelechiinae, Gnorimoschemini

The Alberta members of this group are presently being studied by Vazrick Nazari. A number of new species will be described.

328. *Gnorimoschema gallaeasterella* (Kell.) (1985. *Gnorimoschema gallaeasterella* (Kell.) – 22A-VIII-2003 1, 19-VIII-2004 2 and 29B-VIII-2007 1.
329. *Gnorimoschema gallaesolidaginis* Riley (1986. *Gnorimoschema gallaesolidaginis* (Riley)) (Golden Elliptical-gall Moth) – 9C-IX-2006 1 and 30B-VIII-2009 1.
332. *Gnorimoschema septentrionella* Fyles (2000. *Gnorimoschema septentrionella* Fyles) – 30C-VII-2003 1 and 19-VIII-2004 7.
334. *Gnorimoschema vastificum* Braun (2008. *Gnorimoschema vastificum* Braun) – 22B-VIII-2003 1.
344. *Caryocolum cassella* (Wlk.) (2040. *Caryocolum cassella* (Wlk.)) – 8-VIII-2002 1. Reported as new for Alberta in Pohl et al (2005).

Gelechiidae, Gelechiinae, Anacampsini

348. *Anacampsis concinuseella* (Cham.) (2225. *Battaristis concinuseella* (Cham.)) – 25B-VII-2008 1.

Gelechiidae, Dichomeridinae

354. *Helcystogramma fernaldella* (Bsk.) (2267. *Brachmia fernaldella* (Bsk.)) – 23-V-2001 6, 3-VI-2002 1, 12-VI-2002 1, 17A-VI-2003 1, 27-V-2004 5 and 30C-V-2006 1.
356. *Dichomeris setosella* (Clem.) (2302. *Dichomeris setosella* (Clem.)) – 23-V-2001 1.
359. *Dichomeris simpliciella* Bsk. (2303. *Dichomeris simpliciella* Bsk.) - 29A-VIII-2007 1, 25B-VII-2008 1 and 25C-VII-2008 1.

LIMACODIDAE – Slug Caterpillar Moths

Limacodidae, Limacodinae

364. *Tortricidia testacea* Pack. (4652. *Tortricidia testacea* Pack.) – 22-VI-2002 1 JV, 2-VII-2003 1 JV, 22-VI-2004 1 and 29A-VI-2005 1.

COSSIDAE – Carpenterworm Moths

392. *Acossus populi* (Wlk.) 2676. *Acossus populi* (Wlk.) (Aspen Carpenterworm) – 29-VI-2002 1 JV.

TORTRICIDAE – Tortricid Moths

Tortricidae, Olethreutinae

Olethreutine species indet - 23-V-2001 1, 9A-IX-2006 1 and 25A-VII-2008 2.

Tortricidae, Tortricinae, Tortricini

Acleris sp. – 26-VIII-2002 1. Jason Dombroskie kindly looked at the following specimens and made three revisions. Many members of this genus are still poorly known and identifications should be regarded as tentative until such time as a good, monographic treatment has been carried out.

403. *Acleris albicomana* (Clem.) (3502. *Croesia albicomana* (Clem.)) – 9-VII-2002 2, 4A-VII-2006 1, 4B-VII-2006 1, 4C-VII-2006 1 and 25b-VII-2008 1.
404. *Acleris curvalana* (Kft.) (3504. *Croesia curvalana* (Kft.)) (Blueberry Leaf-tier) – 8-VIII-2002 1.
408. *Acleris cervinana* (Fern.) (3514. *Acleris cervinana* (Fern.)) – 3-VI-2002 1.
411. *Acleris fusca* (B. & Bsk.) (3520. *Acleris fusca* (B. & Bsk.) and *Acleris obligatoria* (Park & Raz.) – 19-VIII-2004 1, 9B-IX-2006 1, 30A-VIII-2009 1 and 30B-VIII-2009 1.
411. *Acleris fusca* (B. & Bsk.) or 414. *Acleris cornana* (McD.) (3520 *Acleris fusca* (B. & Bsk.) or 3523. *Acleris cornana* (McD.) – 23-V-2001 1 and 23-V-2002 3.
415. *Acleris forbesana* (McD.) (3525. *Acleris forbesana* (McD.)) – 30C-V-2006 1 and 9B-IX-2006 1.
422. *Acleris robinsoniana* (Fbs.) (3536. *Acleris robinsoniana* (Fbs.)) – 14B-VIII-2002 1 and 22C-VIII-2003 2.
431. *Acleris variana* (Fern.) (3548. *Acleris variana* (Fern.)) (Eastern Black-headed Budworm Moth) – 22A-VIII-2003 1 9B-IX-2006 3, 29A-VIII-2007 1, 25B-VII-2008 1 and 30B-VIII-2009 1.
432. *Acleris maccana* (Tr.) (3549. *Acleris maccana* (Tr.)) – 1-V-2002 1.
434. *Acleris scabrana* (D. & S.) (3552. *Acleris scabrana* (D. & S.)) – 1-V-2002 1?
436. *Acleris nigrolinea* (Rob.) (3556. *Acleris nigrolinea* (Rob.)) – 1-VI-2002 1 and 26-VIII-2002 1.
439. *Acleris hudsoniana* (Wlk.) (3561. *Acleris hudsoniana* (Wlk.)) – 1-V-2002 5 and 14A-V-2003 1.

Tortricidae, Tortricinae, Cochylini

The members of this group are currently being revised by Dr. Eric Metzler and Dr. John Brown. Some of the following specimens are now being examined by them.

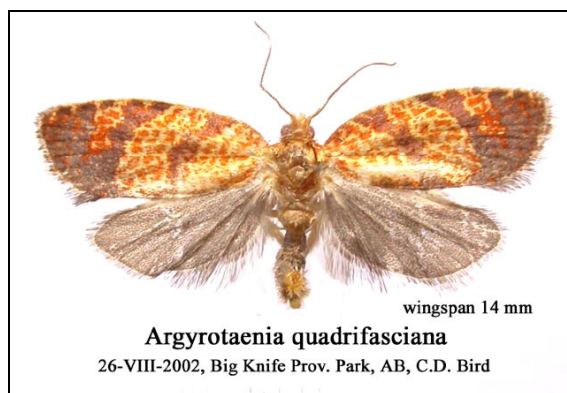
- Phtheochroa* sp. – 9-VII-2002 1.
440. *Phtheochroa aureoalbida* (Wlsm.) (3794. *Hysterosia aureoalbida* (Wlsm.)) – 22-VI-2004 1?.
443. *Phtheochroa fulviplicana* (Wlsm.) (3792. *Hysterosia fulviplicana* (Wlsm.)) – 8-VIII-2002 2, 22-VI-2004 1, 29-VI-2005 2, 4A-VII-2006 1, 30B-VIII-2009 1 and 30C-VIII-2009 1.
446. *Phtheochroa vitellinana* (Zell.) (3787. *Carolella vitellinana* (Zell.)) – 22-VI-2004 3.
448. *Phtheochroa waracana* (Kft.) (3796. *Hysterosia waracana* (Kft.)) – 8-VIII-2002 1, 8A-VII-2003 2 and 9A-IX-2006 1.
453. *Platphalonidia lavana* (Bsk.) (3834. *Hysterosia lavana* Bsk.) – 22-VI-2004 1?.
- Aethes heleniana* Raz. Not in Pohl et al. (Not in Hodges) – 8-VIII-2002 1?.
457. *Aethes promptana* (Rob.) (3844. *Hysterosia promptana* (Rob.)) – 22-VI-2004 1.

465. *Cochylis nana* (Haw.) (3764. *Cochylis nana* (Haw.)) – 22-VI-2004 1.

Tortricidae, Tortricinae, Archipini

472. *Pandemis canadana* Kft. (3595. *Pandemis canadana* Kft.) (Green Aspen Leaf-tier Moth) – 9-VII-2002 1, 17-VIII-2002 1 JV, 19-VIII-2004 1, 4A-VII-2006 1, 4B-VII-2006 2, 25A-VII-2008 1, 25B-VII-2008 1, 25C-VII-2008 1, 30A-VIII-2009 2 and 30B-VIII-2009 1.

477. *Argyrotaenia tabulana* Free. (3603. *Argyrotaenia tabulana* Free.) – 27-V-2004 2.



479. *Argyrotaenia quadrifasciana* (Fern.) (3621. *Argyrotaenia quadrifasciana* (Fern.)) (Lesser All-green Leafroller Moth, Fourlined Leafroller) – 26-VIII-2002 1 and 4C-VII-2006 1.

480. *Argyrotaenia mariana* (Fern.) (3625. *Argyrotaenia mariana* (Fern.)) (Grey-banded Leafroller Moth) – 3-VI-2002 1.

483. *Choristoneura rosaceana* (Harr.) (3635. *Choristoneura rosaceana* (Harr.)) (Oblique-banded Leafroller Moth) – 11-IX-2002 1, 4C-VII-2006 1, 25B-VII-2008 2 and 25C-VII-2008 1.

485. *Choristoneura conflictana* (Wlk.) (3637. *Choristoneura conflictana* (Wlk.)) (Large Aspen Tortrix) – 9-VII-2002 1, 17A-VI-2003 1, 17C-VI-2003 2, 4C-VII-2006 1 and 4B-VII-2006 1.

486. *Choristoneura fumiferana* (Clem.) (3638. *Choristoneura fumiferana* (Clem.)) (Spruce Budworm Moth) – 8B-VII-2003 1, 4B-VII-2006 1 and 4C-VII-2006 1.

495. *Archips argyrospila* (Wlk.) (3648. *Archips argyrospila* (Wlk.)) (Fruit-tree Leafroller Moth) – 4A-VII-2006 2, 4B-VII-2006 4, 4C-VII-2006 1, 25B-VII-2008 1 and 25C-VII-2008 1.

504. *Aphelia alleniana* (Fern.) (3675. *Aphelia alleniana* (Fern.)) – 9-VII-2002 1 and 8B-VII-2003 1.

508. *Clepsipersicana* (Fitch) (3682. *Clepsipersicana* (Fitch)) (White-triangle Tortrix Moth) – 29A-VI-2005 1, 4A-VII-2006 1, 4B-VII-2006 1 and 25B-VII-2008 1.

509. *Clepsipersicana clemensiana* (Fern.) (3684. *Clepsipersicana clemensiana* (Fern.)) (Clemen's Clepsipersicana Moth) – 26-VIII-2002 1, 11-IX-2002 1, 30B-VII-2003 1, 30C-VII-2003 1, 19-VIII-2004 3 and 29A-VI-2005 1, 4A-VII-2006 2, 4C-VII-2006 2 and 25A-VII-2008 1.

512. *Ptycholoma peritana* (Clem.) (3688. *Ptycholoma peritana* (Clem.)) (Garden Tortrix Moth) – 30C-VII-2003 1.

513. *Ptycholoma virescana* (Clem.) (3689. *Ptycholoma virescana* (Clem.)) – 8-VIII-2002 2, 26-VIII-2002 1 and 30A-VII-2003 1.

Tortricidae, Tortricinae, Sparganothidini

518. *Sparganothis xanthoides* (Wlk.) (3706. *Sparganothis xanthoides* (Wlk.)) (Mosaic Sparganothis Moth) – 26-VIII-2002 1, 30C-VII-2003 1, 4C-VII-2006 1 and 25A-VII-2008 1.

519. *Sparganothis violaceana* (Rob.) (3710. *Sparganothis violaceana* (Rob.)) - 30C-V-2006 1.
 520. *Sparganothis unifasciana* (Clem.) (3711. *Sparganothis unifasciana* (Clem.)) (One-lined Sparganothis Moth) – 9-VII-2002 1, 26-VIII-2002 1, 4A-VII-2006 1, 4B-VII-2006 2, 4C-VII-2006 2, 25A-VII-2008 1, 25C-VII-2008 1 and 30A-VIII-2009 1.



Sparganothis flavibasana, image from Moth Photographers Group web site

- 521.1. *Sparganothis flavibasana* (Fern.) (3717. *Sparganothis flavibasana* (Fern.)) – 4C-VII-2006 1.
 Reported as new for Alberta in Pohl et al 2011.
 522. *Sparganothis reticulatana* (Clem.) (3720. *Sparganothis reticulatana* (Clem.)) (Reticulated Fruitworm Moth) – 11-IX-2002 1.
 523. *Platynota idaeusalis* (Wlk.) (3740. *Platynota idaeusalis* (Wlk.)) (Tufted Apple Bud Moth) – 8-VIII-2002 1 and 25B-VII-2008 1.

Tortricidae, Tortricinae, Euliini

525. *Eulia ministrana* (L.) (3565. *Eulia ministrana* (L.)) (Ferruginous Eulia Moth) – 30A-V-2006 2.
 528. *Apotomops wellingtoniana* Kft.) (3589. *Anopina wellingtoniana* Kft.) – 9C-IX-2006 1, 11A-V-2007 1 and 25C-VII-2008 1.

Tortricidae, Olethreutinae, Endotheniini

533. *Endothenia nubilana* (Clem.) (2743a. *Endothenia quadrimaculana nubilana* (Clem.)) – 4C-VII-2006 1, 25C-VII-2008 1 and 30B-VIII-2009 1.
 547. *Apotomis removana* (Kft.) (2766. *Apotomis dextrana* McD.) (Green Aspen Leafroller Moth) – 8-VIII-2002 1, 22C-VIII-2003 1, 25C-VII-2008 2, 25C-VII-2008 1, 30A-VIII-2009 1, 30B-VIII-2009 1 and 30C-VIII-2009 1.
 551. *Apotomis capreana* (Hbn.) (2753. *Apotomis capreana* (Hbn.)) (Sallow Apotomis Moth) – 4A-VII-2006 1 and 25C-VII-2008 1.
 552. *Apotomis deceptana* (Kft.) (2765. *Apotomis deceptana* (Kft.)) (Deceptive Apotomis Moth) - 29A-VIII-2007 1.
 556. *Pseudosciaphila duplex* (Wlsm.) (2769. *Pseudosciaphila duplex* (Wlsm.)) (Spotted Leaf Roller, Poplar Leafroller Moth) – 22-VI-2004 1.
 557. *Orthotaenia undulana* (D. & S.) (2770. *Orthotaenia undulana* (D. & S.)) (Dusky Leafroller Moth) – 9-VII-2002 1, 17A-VI-2003 1, 17C-VI-2003 1, 8A-VII-2003 1, 8B-VII-2003 1, 22-VI-2004 1, 29A-VI-2005 1, 29B-VI-2005 1 and 4C-VII-2006 1.
Olethreutes spp. – 9-VII-2002 2, 8-VIII-2002 4, 26-VIII-2002 1, 8A-VII-2003 1, 8B-VII-2003 2, 30A-VII-2003 1, 30C-VII-2003 1, 22-VI-2004 1, 29A-VI-2005 2, 29B-VI-2005 1 and 4A-VII-2006

1. Many of the species in this genus are poorly known, difficult to identify and/or require genitalic examination.

560. *Olethreutes inornatana* (Clem.) or 561. *Olethreutes quadrifidum* (Zell.) (2788. *Olethreutes inornatana* (Clem.) or 2794. *Olethreutes quadrifidus* (Zell.) – 4B-VII-2006 1.
 562. *Olethreutes appendiceum* (Zell.) (2821. *Olethreutes appendicea* (Zell.)) (Serviceberry Olethreutes Moth) – 4A-VII-2006 1 and 4B-VII-2006 1.
 569. *Olethreutes metallicana* (Hbn. (2839. *Olethreutes puncticostana* (Wlk.)) – 22-VI-2004 1.
 583. *Metendothenia separatana* (Kft.) (2860. *Hedya separatana* (Kft.)) (Pink-washed Leafroller Moth) – 23-V-2001 1?, 17A-VI-2003 1 and 17C-VI-2003 1.
 584. *Hedya ochroleucana* (Frölich) (2861. *Hedya ochroleucana* (Frölich)) (Off-white Hedya Moth) – 9-VII-2002 2, 1-VII-2003 1 JV, 8A-VII-2003 2, 29A-VI-2005 2 and 25B-VII-2008 2.
 585. *Hedya nubiferana* (Haw.) (2862. *Hedya nubiferana* (Haw.)) (Marbled Orchard Tortrix Moth) – 8-VIII-2002 2.

Tortricidae, Olethreutinae, Enarmoniini

587. *Ancylis subaequana* (Zell.) (3355. *Ancylis subaequana* (Zell.)) – 30A-V-2006 1.
 588. *Ancylis discigerana* (Wlk.) (3358. *Ancylis discigerana* (Wlk.)) (Yellow Birch Leaf-folder) - 17C-VI-2003 2.
 600. *Ancylis unguicella* (L.) (3382. *Ancylis unguicella* (L.)) – 23-V-2001 1 and 9-VII-2002 2 1.



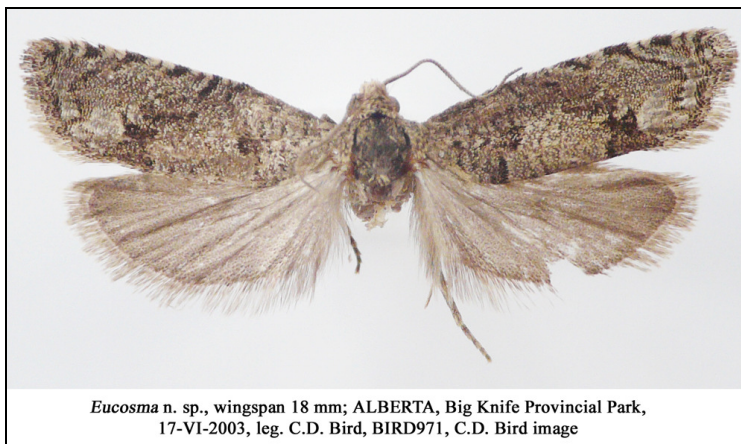
Ancylis mediofasciana, wingspan 18 mm: ALBERTA, Big Knife Provincial Park, 23-V-2001, C.D. Bird, BIRD743, C.D. Bird image

601. *Ancylis mediofasciana* (Clem.) (3384. *Ancylis mediofasciana* (Clem.)) – 23-V-2001 2, 3-VI-2002 2, 17A-VI-2003 2, 27-V-2004 4, 30A-V-2006 1 and 30C-V-2006 1.
 604. *Hystrichophora stygiana* (Dyar) (3391. *Hystrichophora stygiana* (Dyar)) – 8B-VII-2003 2.

Tortricidae, Olethreutinae, Eucosmini



612. *Retinia burkeana* (Kft. (2900. *Petrova burkeana* (Kft.)) – 15-VIII-2002 1 JV and 25B-VII-2008 1.
616. *Phaneta awemeana* (Kft.) (2911. *Phaneta awemeana* (Kft.)) – 23-V-2003 1 JV.
624. *Phaneta verna* Miller (2926. *Phaneta verna* Miller) (Speckled Phaneta Moth) – 14A-V-2003 1.
625. *Phaneta ochroterminana* (Kft.) (2929. *Phaneta ochroterminana* (Kft.)) (Buff-tipped Phaneta Moth) – 4C-VII-2006 2 and 25A-VII-2008 2.
629. *Phaneta convergana* (McD.) (2940. *Phaneta convergana* (McD.)) – 23-V-2001 1, 23-V-2003 1 JV and 11A-V-2007 1.
632. *Phaneta ornatula* (Heinr.) (2951. *Phaneta ornatula* (Heinr.)) – 25C-VII-2008 1. This is the first known collection for Alberta. A significant range extension as it is an eastern species.
633. *Phaneta marmontana* (Kft.) (2933. *Phaneta marmontana* (Kft.)) – 30A-VII-2003 1, 4B-VII-2006 1, 4C-VII-2006 1 and 25C-VII-2008 2.
636. *Phaneta tarandana* (Mösch.) (2956. *Phaneta tarandana* (Mösch.)) – 22C-VIII-2003 1.
641. *Phaneta fertoriana* (Heinr.) (2965. *Phaneta fertoriana* (Heinr.)) – 22-VI-2004 1.
643. *Phaneta indagatricana* (Heinr.) (2969. *Phaneta indagatricana* (Heinr.)) – 30B-VII-2003 1, 22A-VIII-2003 1, 4A-VII-2006 2 and 4C-VII-2006 1.
644. *Phaneta dorsiatomana* (Kft.) (2972. *Phaneta dorsiatomana* (Kft.)) – 23-V-2001 1.
648. *Phaneta pallidicostana* (Wlsm.) (2980. *Phaneta pallidicostana* (Wlsm.)) – 9-VII-2002 2, 26-VIII-2002 1, 8A-VII-2003 2, 30B-VII-2003 1, 4A-VII-2006 1, 4B-VII-2006 1, 4C-VII-2006 3 and 30C-VIII-2009 1.
650. *Phaneta infimbriana* (Dyar) (2985. *Phaneta infimbriana* (Dyar)) – 25C-II-2008 1.
654. *Phaneta offectalis* (Hulst) (3005. *Phaneta offectalis* (Hulst)) – 9-VII-2002 1.



- Eucosma* n. sp. 1 – 17C-VI-2003 1. In an earlier report as 3156 *Pelochrista occipitana*, this specimen is felt to be an undescribed species by Dr. Don Wright.
- Eucosma* n. sp. 2 – 29A-VI-2005 1. Retained by Dr. Donald Wright for future reference and as a basis for a male genitalia drawing. He considers it a new species of *Eucosma*.
656. *Eucosma ridingsiana* (Rob.) (3014. *Eucosma ridingsana* (Rob.)) (Riding's Eucosma Moth, Snakeweed Borer Moth) – 17-VIII-2002 1 JV and 22B-VIII-2003 1.
660. *Eucosma serpentana* (Wlsm.) (3031. *Eucosma serpentana* (Wlsm.)) – 29B-VI-2005 1.
662. *Eucosma morrisoni* (Wlsm.) (3035. *Eucosma morrisoni* (Wlsm.)) – 29A-VI-2005 1.
664. *Eucosma agricolana* (Wlsm.) (3037. *Eucosma agricolana* (Wlsm.)) – 8B-VII-2003 1 and 25A-VII-2008 1.
683. *Eucosma dorsisignatana* (Clem.) (3116. *Eucosma dorsisignatana* (Clem.)) (Triangle-backed Eucosma Moth) – 26-VIII-2002 2, 11-IX-2002 6, 19-VIII-2004 1 and 25A-VII-2008 1.
684. *Eucosma similiana* (Clem.) (3116a. *Eucosma similiana* (Clem.)) – 30C-VIII-2009 2.
685. *Eucosma juncticiliana* (Wlsm.) (3119. *Eucosma juncticiliana* (Wlsm.)) – 8-VIII-2002 2, 26-VIII-2002 1 and 19-VIII-2004 1.
692. *Eucosma cataclystiana* (Wlk.) 3142. *Eucosma cataclystiana* (Wlk.) (Solidago Eucosma Moth) – 9-VII-2002 1.
694. *Pelochrista argenteana* (Wlsm.) (3149. *Pelochrista argenteana* (Wlsm.)) – 17C-VI-2003 1.
707. *Notocelia purpurissitana* Heinr. (3209. *Notocelia purpurissitana* Heinr.) – 9A-IX-2006 1.
709. *Notocelia culminana* (Wlsm.) (3211. *Notocelia culminana*) (Wlsm.) – 8-VIII-2002 1, 26-VIII-2002 1, 11-IX-2002 2, 30B-VII-2003 2, 30C-VII-2003 2, 19-VIII-2004 2, 25B-VII-2008 1 and 30B-VIII-2009 1.
710. *Gypsonoma fasciolana* (Clem.) (3223. *Gypsonoma fasciolana* (Clem.)) – 12-VI-2002 1.
714. *Gypsonoma substitutionis* Heinr. (3227. *Gypsonoma substitutionis* Heinr.) – 9-VII-2002 1, 25B-VII-2008 1 and 25C-VII-2008 1.
717. *Proteoteras aesculana* Riley (3230. *Proteoteras aesculana* Riley) (Early Proteoteras Moth, Maple Twig Borer Moth) – 25B-VII-2008 1.
725. *Pseudexentera oregonana* (Wlsm.) (3248. *Pseudexentera oregonana* (Wlsm.)) (Early Aspen Leafroller Moth) – 1-V-2002 2.
731. *Epinotia solandriana* (L.) (3283. *Epinotia solandriana* (L.)) (Codling Moth, Birch-Aspen Leafroller) – 19-VIII-2004 1 and 29A-VIII-2007 1.
733. *Epinotia castaneana* (Wlsm.) (3288. *Epinotia castaneana* (Wlsm.)) – 4B-VII-2006 1.
740. *Epinotia nisella* (Cl.) (3306. *Epinotia nisella* Cl.) (Variable Tortrix Moth, Poplar Branchlet Borer Moth, Yellow-headed Aspen Leaf-tier) – 26-VIII-2002 1, 30A-VII-2003 3, 30C-VII-

2003 1, 22A-VIII-2003 3, 22B-VIII-2003 1, 22C-VIII-2003 1, 19-VIII-2004 1 and 29A-VIII-2007 1.

741. *Epinotia criddleana* Kft. (3307. *Epinotia criddleana* Kft.) – 8-VIII-2002 1, 29A-VIII-2007 1, 25B-VII-2008 1 and 30B-VIII-2009 1.
743. *Epinota transmissana* (Wlk.) (3310. *Epinotia transmissana* (Wlk.)) (Walker's *Epinotia* Moth) – 8A-VII-2003 1?
753. *Epinotia lomonana* (Kft.) (3342. *Epinotia lomonana* (Kft.)) – 11-IX-2002 3, 13B-IX-2003 1, 9A-IX-2006 4, 9B-IX-2006 1 and 9C-IX-2006 2.
757. *Epinotia lindana* (Fern.) (3351. *Epinotia lindana* (Fern.)) (Diamondback *Epinotia* Moth) – 9A-IX-2006 1, 9B-IX-2006 2, 29A-VIII-2007 2, 29B-VIII-2007 1 and 30A-VIII-2009 1.

Tortricidae, Olethreutinae, Grapholitini

776. *Cydia strobilella* (L.) (3466. *Cydia youngana* (Kft.)) – 17C-VI-2003 1.

EPERMINIIDAE – Eperminiid Moths

791. *Ochromolopis ramapoella* (Kft.) (2334. *Ochromolopis ramapoella* (Kft.)) – 23-V-2001 1 and 17B-VI-2003 1. Pohl et al. (2005) report this as new to Alberta

ALUCITIDAE – Many Plume Moths

Alucita indet. -30A-VIII-2009 1 and 30B-VIII-2009 1.

792. *Alucita montana* Barnes & Lindsey (2313. *Alucita hexadactyla* (L.) – 19-VIII-2004 2 and 29A-VIII-2007 1. B. Landry and J.F. Landry (2004) have shown that true *A. hexadactyla* does not occur in North America and that instead we have three other species.
793. *Alucita adriendenisi* B. Landry & J.-F. Landry (2313. *Alucita hexadactyla* (L.)) – 1-V-2002 1, 30A-VII-2003 3, 19-VIII-2004 1, 25A-VII-2008 1 and 25C-VII-2008 1. This species was recently described (B. Landry & J.F. Landry 2004).

PTEROPHORIDAE – Plume Moths

Pterophoridae, Pterophorinae

- Species indet. – 30-VII-2003 7, 29A-VI-2005 1, 4-VII-2006 2, 25-VIII-2006 3 and 9-IX-2006 4.
These specimens are currently being examined by Doug Macaulay.

Pterophoridae, Pterophorinae, Platyptiliini

805. *Paraplatyptilia albiciliatus* (Wlsm.) (6130. *Paraplatyptilia albiciliata* (Wlsm.)) – 8-VII-2003 1.

Pterophoridae, Pterophorinae, Oxyptilini

814. *Capperia ningoris* (Wlsm.) (6094. *Capperia ningoris* (Wlsm.)) – 8-VIII-2003 1.
818. *Dejongia lobidactyla* (Fitch) (6102. *Trichoptilus lobidactylus* (Fitch)) – 4-VII-2006 1.

Pterophoridae, Pterophorinae, Oidaematophorini

824. *Hellinsia pectodactylus* (Staud.) (6205. *Hellinsia pectodactylus* (Staudinger)) – 4-VII-2006 1.

833. *Oidaematophorus mathewianus* (Zell.) (6166. *Oidaematophorus mathewianus* (Zell.)) (Mathew's Plume Moth) – 4-VII-2006 3, 25A-VII-2008 1 and 25C-VII-2008 1.
 830. *Hellinsia arion* (B. & L.) (6232. *Hellinsia arion* (B. & L.)) – 30-VII-2003 2.
 840. *Emmelina monodactyla* (L.) (6234. *Emmelina monodactyla* (L.)) (Morning Glory Plume Moth) – 30-VII-2003.

PYRALIDAE – Pyralid Moths

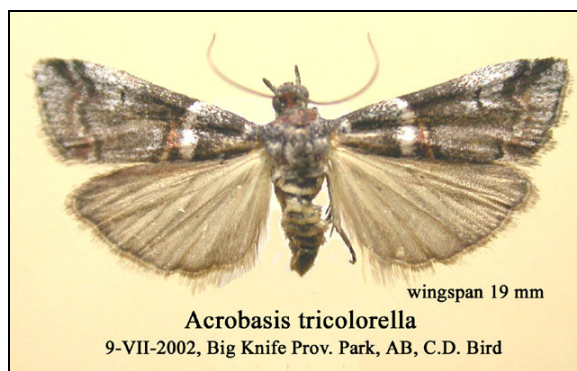
Pyralidae, Pyralinae

Aglossa sp. – 9-VII-2002 1. Called 1017. *Achyra bifidalis* (F.) (4974. *Achyra bifidalis* (F.)) in previous reports, this has turned out to belong to an undescribed Pyralid which Dr. Alma Solis thinks may be in the genus *Aglossa*.

Pyralidae, Epipaschiinae

858. *Pococera asperatella* (Clem.) (5606. *Tetralopha asperatella* (Clem.)) (Maple Webworm Moth) – 17A-VI-2003 1, 8B-VII-2003 1.

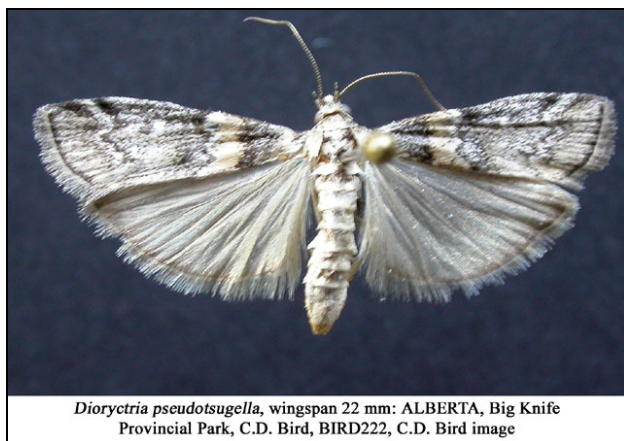
Pyralidae, Phycitinae, Phycitini



861. *Acrobasis tricolorella* Grt. (5655. *Acrobasis tricolorella* Grt.) (Tricolored Acrobasis Moth) – 9-VII-2002 3, 8A-VII-2003 1, 8B-VII-2003 6, 29A-VI-2005 1, 4A-VII-2006 3 and 25C-VII-2008 1.
 864. *Myelopsis subtetricella* (Rag.) (5718. *Myelopsis subtetricella* (Rag.)) – 23-V-2001 2, 3-VI-2002 4, 12-VI-2002 4 and 17A-VI-2003 2, 27-V-2004 2, 30B-V-2006 3, 30C-V-2006 1 and 30A-VIII-2009 1.
 865. *Apomyelois bistriatella* (Hulst) (5721. *Apomyelois bistriatella* (Hulst)) – 4B-VII-2006 1 and 25B-VII-2008 1.
 866. *Eulogia ochrifrontella* (Zell.) (5999. *Eulogia ochrifrontella* (Zell.)) (Broad-banded Eulogia Moth) – 25B-VII-2008 1.
 870. *Vitula seratileneella* Rag. (6007. *Vitula serratileneella* Rag.) – 22A-VIII-2003 1, 19-VIII-2004 1 and 25B-VIII-2006 1.



885. *Ambesa laetella* Grt. (5759. *Ambesa laetella* Grt.) – 9-VII-2002 1.
890. *Meroptera pravella* (Grt.) (5787. *Meroptera pravella* (Grt.)) (Lesser Aspen Webworm) – 23-V-2001 1, 17A-VI-2003 3, 17C-VI-2003 1 and 27-V-2004 1.
891. *Sciota basilaris* Zell. (5799. *Nephoterix basilaris* Zell.) – 23-V-2001 2, 9-VII-2002 1 and 27B-VI-2003 1.
901. *Pyla aenigmatica* Heinr. (5827. *Pyla aenigmatica* Heinr.) – 30C-VII-2003 1.
903. *Pyla fusca* (Haw.) (5829. *Pyla fusca* (Haw.)) (Speckled Black Pyla Moth) – 22A-VIII-2003 1 and 25C-VII-2008 1.
906. *Dioryctria abietivorella* (Grt.) (5841. *Dioryctria abietivorella* (Grt.)) – 25B-VII-2008 1. This specimen was identified by Caroline Whitehouse. *Dioryctria abietivorella*, *D. reniculelloides* and *D. pseudotsugella* have been identified from Big Knife but they are notoriously difficult to distinguish without genitalic examination (Sopow et al. 1996).
907. *Dioryctria reniculelloides* Mut. & Mun. (5843. *Dioryctria reniculelloides* Mutuura & Mun.) (Spruce Coneworm Moth) – 9-VII-2002 1, 30A-VII-2003 1 and 19-VIII-2004 1. These specimens were identified by Amanda Roe.



- 907.1. *Dioryctria pseudotsugella* Mun. (5844. *Dioryctria pseudotsugella* Mun.) (Douglas Fir coneworm) – 26-VIII-2002 1. Not reported for Alberta by Bowman (1951). Amanda Roe, who identified the specimen and mentioned that she had not expected it this far northeast. It is closely related to *Dioryctria reniculelloides*.
915. *Lipographis fenestrella* (Pack.) (5886. *Lipographis fenestrella* (Pack.)) – 22A-VIII-2003 3 and 22C-VIII-2003 2.
918. *Hulstia undulatella* (Clem.) (5918. *Hulstia undulatella* (Clem.)) (Sugarbeet Crown Borer Moth) – 30C-VIII-2009 1.

920. *Zophodia grossulariella* (Hbn.) (5968. *Zophodia convolutella* (Hbn.)) (Gooseberry Fruitworm Moth) – 3-VI-2002 1, 14A-V-2003 1, 27-V-2004 1 and 11B-V-2007 1.

928. *Phycitoides mucidella* (Rag.) (5946. *Phycitoides mucidellum* (Rag.)) – 25B-VIII-2006 1.

Pyralidae, Phycitinae, Anerastiini

930. *Anerastia lotella* (Hbn.) (6038. *Anerastia lotella* (Hbn.)) – 8-VIII-2002 2, 26-VIII-2002 1 and 30C-VII-2003 1.

Pyralidae, Phycitinae, Peoriini

933. *Peoria approximella* (Wlk.) (6053. *Peoria approximella* (Wlk.)) (Carmine Snout Moth) – 4C-VII-2006 1.

CRAMBIDAE – Snout Moths

Crambidae, Scopariinae

935. *Scoparia biplagiata* Wlk. (4716. *Scoparia biplagiata* Wlk.) (Double-striped Scoparia Moth) – 8-VIII-2002 1, 26-VIII-2002 5, 11-IX-2002 3 and 30A-VII-2003 1, 4A-VII-2006 1, 25A-VII-2008 1, 25B-VII-2008 1, 25C-VII-2008 1 and 30A-VIII-2009 1.

Crambidae, Crambinae, Haimbachiini

941. *Occidentalia comptulatilis* (Hulst) (5474. *Acigona comptulatilis* (Hulst)) – 26-VIII-2002 1.

Crambidae, Crambinae, Crambini

948. *Chrysoteuchia topiarius* (Zell.) (5391. *Chrysoteuchia topiaria* (Zell.)) (Cranberry Girdler) – 9-VII-2002 3, 17C-VI-2003 1, 8A-VII-2003 1, 8B-VII-2003 1, 22A-VIII-2003 4, 22B-VIII-2003 2, 22C-VIII-2003 1, 30C-VIII-2003 1, 22-VI-2004 2, 29A-VI-2005 5, 4A-VII-2006 1, 4B-VII-2006 1 and 25C-VII-2008 1.

953. *Crambus perlella* (Scop.) (5343. *Crambus perlellus innotatellus* Wlk.) – 9-VII-2002 1, 8-VIII-2002 1, 26-VIII-2002 2, 11-IX-2002 1, 8A-VII-2003 3, 30A-VII-2003 1, 19-VIII-2004 1, 4A-VII-2006 2, 4B-VII-2006 1, 4C-VII-2006 1, 25A-VII-2008 1 and 25C-VII-2008 1.

957. *Crambus trichusalis* Hulst (5352. *Crambus trichusalis* Hulst) – 22C-VIII-2003 1.

959. *Crambus ainsliellus* Klots (5354. *Crambus ainsliellus* Klots) - 26-VIII-2002 1, 11-IX-2002 1, 19-VIII-2004 2, 29B-VIII-2007 1, 9-IX-2007 1 and 30A-VIII-2009 1. These are probably *ainsliellus*. It and 5357 *Crambus leachellus* are difficult to separate.

967. *Agriphila ruricolellus* (Zell.) (5399. *Agriphila ruricolella* (Zell.)) (Lesser Vagabond Sod Webworm Moth) – 8-VIII-2002 1, 26-VIII-2002 1, 30A-VII-2003 1, 30C-VII-2003 1, 19-VIII-2004 1, 25A-VII-2008 1, 25C-VII-2008 1, 30A-VIII-2009 1, 30B-VIII-2009 1 and 30C-VIII-2009 1.

968. *Agriphila vulgivagellus* (Clem.) (5403. *Agriphila vulgivagella* (Clem.)) (Vagabond Crambus Moth) - 22B-VIII-2003 2 and 29A-VIII-2007 1.

969. *Agriphila attenuatus* (Grt.) 5404. *Agriphila attenuata* (Grote) – 22-VIII-2003 2. Not previously known from Alberta.

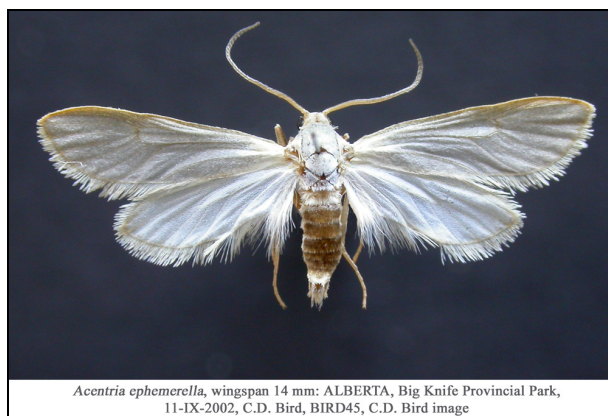
970. *Neodactria luteolellus* (5379. *Neodactria luteolella* Clem.) (Mottled Grass-veneer Moth) – 4B-VII-2006 1 and 4C-VII-2006 1.

975. *Pediasia truncatellus* (Zett.) (5411. *Pediasia truncatella* (Zett.)) – 22-VI-2004 1.
976. *Pediasia trisecta* (Wlk.) (5413. *Pediasia trisecta* (Wlk.)) (Sod Webworm Moth) – 26-VIII-2002 1, 11-IX-2002 3, 5-VIII-2003 1, 22A-VIII-2003 3, 22B-VIII-2003 4, 22C-VIII-2003 5, 19-VIII-2004 1, 25C-VIII-2006 1, 29A-VIII-2007 1, 29B-VIII-2007 1, 30A-VIII-2009 1, 30B-VIII-2009 1 and 30C-VIII-2009 1.
978. *Pediasia ericellus* (B. & McD.) (5415. *Pediasia ericella* (B. & McD.)) – 9-VII-2002 1, 8A-VII-2003 1 and 30A-VII-2003 1.
980. *Pediasia dorsipunctellus* (Kft.) (5417. *Pediasia dorsipunctella* (Kft.)) – 8-VIII-2002 11, 26-VIII-2002 6, 11-IX-2002 2, 8A-VII-2003 1, 30B-VII-2003 1, 19-VIII-2004 2 and 25A-VII-2008 1.
984. *Thaumatopsis fernaldella nortella* Kft. (5441a. *Thaumatopsis fernaldella nortella* Kft.) – 26-VIII-2002 1 and 4A-VII-2006 1.

Crambidae, Schoenobiinae

985. *Donacaula melinellus* (Clem.) (5316. *Donacaula melinella* (Clem.)) (Delightful Donacaula Moth) – 4A-VII-2006 1 and 4B-VII-2006 2. These specimens have been sent for study to Edda Martinez at the Mississippi Entomological Museum as she is monographing the North American species of the genus.
986. *Donacaula longirostellus* (Clem.) (5319. *Donacaula longirostellus* (Clem.)) – 4A-VII-2006 1. This specimen has been sent for study to Edda Martinez at the Mississippi Entomological Museum as she is monographing the North American species of the genus.

Crambidae, Acentropinae, Acentropini



987. *Acentria ephemerella* (Denis & Schiff.) (5299. *Acentria nivea* (Olivier) (Water Veneer Moth) – 26-VIII-2002 3, 11-IX-2002 4, 8A-VII-2003 2, 8B-VII-2003 2, 30B-VII-2003 2, 30C-VII-2003 1, 22B-VIII-2003 1, 22C-VIII-2003 2, 29B-VIII-2007 1 and 29C-VIII-2007 1. Reported as new for Alberta in Pohl et al. (2005).

Crambidae, Acentropinae, Nymphulini

989. *Synclita oblitalis* (Wlk.) (4755. *Synclita oblitalis* (Wlk.)) (Waterlily Leafcutter Moth) – 26-VIII-2002 1, 29A-VIII-2007 3 and 29B-VIII-2007 1.

Crambidae, Evergestinae

995. *Evergestis pallidata* (Hufn.) (4897. *Evergestis pallidata* (Hufn.)) (Purple-backed Cabbageworm Moth) – 4A-VII-2006 1 and 25B-VII-2008 2.

Crambidae, Pyraustinae, Pyraustini

1011. *Fumibotys fumalis* (Gn.) (4950. *Fumibotys fumalis* (Gn.)) (Mint Root Borer Moth) – 8-VIII-2002 1 and 19-VIII-2004 1.
1012. *Perispasta caeculalis* Zell. (4951. *Perispasta caeculalis* Zell.) (Titian Peale's Pyralid Moth) – 20-VI-2002 1 JV, 17A-VI-2003 1, 17C-VI-2003 1 and 25A-VII-2008 1.
1015. *Anania mysippusalis* (Wlk.) (4957. *Mutuuraia mysippusalis* (Wlk.)) – 25B-VII-2008 1.
1018. *Sitochroa chortalis* (Grt.) (4987. *Sitochroa chortalis* (Grt.)) (Sitochroa Moth) – 23-V-2001 1.
1019. *Loxostege lepidalis* (Hulst) (4995. *Loxostege lepidalis* (Hulst)) – 24-VIII-2002 1 JV.
1021. *Loxostege sticticalis* (L.) (5004. *Loxostege sticticalis* (L.)) (Beet Webworm) – 23-V-2001 3, 17A-VI-2003 1, 17B-VI-2003 1, 17-VI-2003 1 JV, 8A-VII-2003 1, 8B-VII-2003 1, 22A-VIII-2003 1, 22B-VIII-2003 1, 22C-VIII-2003 1, 22-VI-2004 2, 4C-VII-2006 1 and 30A-VIII-2009 1.
1026. *Pyrausta nicalis* (Grt.) (5032. *Pyrausta nicalis* (Grt.)) – 8A-VII-2003 1.
1033. *Pyrausta scurralis awemealis* (Mun.) (5065a. *Pyrausta scurralis awemealis* (Mun.)) – 25B-VII-2008 1 and 25C-VII-2008 1. A western species, otherwise known in Alberta only from the Buffalo Lake Conservation Area and an area south of Alix.
1034. *Pyrausta unifascialis* (Pack.) (5068. *Pyrausta unifascialis* (Pack.)) – 8B-VII-2003 1 and 22-VI-2004 1.
1036. *Pyrausta socialis* (Grt.) (5075. *Pyrausta socialis* (Grt.)) – 9-VII-2002 2, 30C-VII-2003 1 and 4A-VII-2006 3.

Crambidae, Pyraustinae, Spilomelini

1039. *Choristostigma plumbosignalis* (Fern.) (5128. *Choristostigma plumbosignalis* (Fern.)) – 4B-VII-2006 1 and 4C-VII-2006 1.
1052. *Mecyna submedialis* (Grt.) (5135. *Mecyna submedialis* (Grt.)) (Orange-roned Mecyna Moth) – 9-VII-2002 4, 8A-VII-2003 3, 30B-VII-2003 1, 30C-VII-2003 1, 22B-VIII-2003 1, 4A-VII-2006 2, 4C-VII-2006 1, 9C-IX-2006 1 and 25A-VII-2008 1.
1053. *Mecyna mustelinalis* (Pack.) (5137. *Mecyna mustelinalis* (Pack.)) – 8A-VII-2003 2 and 8B-VII-2003 1.
1054. *Nomophila nearctica* Mun. (5156. *Nomophila nearctica* Mun.) (Lucerne Moth, Celery Stalkworm Moth) – 8A-VII-2003 2, 22B-VIII-2003 1 and 30A-VIII-2003 1.

HESPERIIDAE – Skippers

Hesperiidae, Pyrginae, Erynnini

1059. *Erynnis icelus* Scud. & Burg. (3945. *Erynnis icelus* Scudder & Burgess) (Dreamy Duskywing) – 12-VI-2003 1 JV.

PAPILIONIDAE - Swallowtails

Papilionidae, Papilioninae, Papiliopini

1091. *Papilio canadensis* R. & J. (4176a. *Papilio glaucus canadensis* Roth. & Jord.) (Canadian Tiger Swallowtail) – 6-VI-2002 1 JV.

PIERIDAE – White and Sulphur Butterflies

Pieridae, Coliadinae

- 1095b. *Colias philodice eriphyle* Edw. (4209. *Colias philodice* Godt.) (Clouded Sulphur) – 15-VI-2002 1 JV, 28 IX-2002 1 JV, 30-X-2001 2, 15-IX-2002 50 SR and 17-VI-2003 1 JV.

Pieridae, Pierinae, Pierini

- 1116a. *Pontia occidentalis occidentalis* (Reak.) (4194. *Pontia occidentalis* (Reak.)) (Western Checkered White) – 24-VII-2002 1 JV and 15-IX-2002 1.

LYCAENIDAE – Blues and Hairstreaks

Lycaenidae, Polyommatae, Polyommataini

1142. *Cupido amyntula albrighti* (Clench) (4362. *Everes amyntula* (Bdv.)) (Western Tailed Blue) – 15-VI-2002 1 JV.
 1143. *Celastrina lucia* (Kby.) (4363. *Celastrina ladon* (Cram.)) (Spring Azure) – 16-V-2003 1 JV.
 1148. *Glaucopsyche lygdamus afra* (Edw.) (4372a. *Glaucopsyche lygdamus couperi* Grt.) (Silvery Blue) – 15-VI-2002 1 JV and 17-VI-2003 1 JV.

NYMPHALIDAE - Fritillaries

Nymphalidae, Heliconiinae, Argynnini

1166. *Boloria bellona jenistai* Stall. & Turn. (4465. *Boloria bellona* (Fabr.)) (Meadow Fritillary) – 15-VI-2002 1 JV.
 1174. *Speyeria cybele pseudocarpenteri* Cherm. & Cherm. (4450c. *Speyeria cybele pseudocarpenteri* (Cherm. & Cherm.)) (Great Spangled Fritillary) – 24-VII-2002 1 JV.
 1176b. *Speyeria aphrodite manitoba* Cherm. & Cherm. (4451. *Speyeria aphrodite* (F.)) (Aphrodite Fritillary) – 13-IX-2009 1.

Nymphalidae, Nymphalinae, Nymphalini

1186. *Vanessa cardui* (L.) (4435. *Vanessa cardui* (L.)) (Painted Lady) – 30-X-2001 1.
 1192. *Nymphalis antiopa hyperborea* (Seitz) (4432. *Nymphalis antiopa* (L.)) (Mourning Cloak) – 24-VII-2002 1 JV and 15-IX-2002 1 SR.
 1194a. *Polygonia satyrus satyrus* (Edw.) (4422. *Polygonia satyrus* (Edw.)) (Satyr Anglewing) – 6-IX-2002 1 JV.
 1198a. *Polygonia faunus faunus* (Edw.) (4423. *Polygonia faunus* (Edw.)) (Green Comma) - 9-IX-2007 1

Nymphalidae, Nymphalinae, Melitaeini

1208. *Phyciodes cocyta* Cram. (4481. *Phyciodes cocyta* (Cram.) (Northern Pearl Crescent) – 18-VII-2002 1 JV.

SATYRIDAE – Arctics and others

Satyridae, Satyrinae, Satyrini

- 1213a. *Coenonympha inornata benjamini* McD. (4583b. *Coenonympha inornata benjamini* McD.) (Common Ringlet) – 15-VI-2002 1 JV and 17-VI-2003 2 JV.
 1214. *Cercyonis pegala ino* Hall (4587f. *Cercyonis pegala ino* Hall) (Common Wood Nymph) – 24-VIII-2002 1 JV and 13-IX-2009 1.
 1218. *Erebia epipsodea* Butler (4599. *Erebia epipsodea* Butler) (Common Alpine) – 15-VI-2002 1 JV.

DREPANIDAE – Lutestrings and Hooktips

Drepanidae, Thyatirinae, Habrosyninae

1231. *Habrosyne scripta* (Gosse) (6235. *Habrosyne scripta* (Gosse)) (The Scribe or Lettered Habrosyne) – 30B-V-2006 1.

Drepanidae, Thyatirinae, Macrothyatirini

1233. *Euthyatira pudens* (Gn.) (6240. *Euthyatira pudens* (Gn.)) (Dogwood Thyatira) – 1-V-2003 1 JV and 11B-V-2007 1.

Drepanidae, Thyatirinae, Macrothyatirini

1234. *Ceranemota albertae* Clarke (6248. *Ceranemota albertae* Clarke) (Alberta Lutestring) – 26-VIII-2002 2, 22A-VIII-2003 1, 22C-VIII-2003 1, 19-VIII-2004 1, 25A-VIII-2006 1, 25B-VIII-2006 1, 25C-VIII-2006 1, 29A-VIII-2007 1, 29B-VIII-2007 1 and 30A-VIII-2009 1.

Drepanidae, Drepaninae, Drepanini

1236. *Drepana arcuata* Wlk. (6251. *Drepana arcuata* Wlk.) (Arched Hook-tip) – 22-VI-2002 1 JV.
 1237. *Drepana bilineata* (Pack.) (6252. *Drepana bilineata* (Pack.)) (Two-lined Hooktip) – 4B-VII-2006 2.

Drepanidae, Drepaninae, Oretini

1239. *Oreta rosea* (Wlk.) (6255. *Oreta rosea* (Wlk.)) (Rose Hooktip) – 29-VI-2002 1 JV.

URANIIDAE – Uraniid Moths

Uraniidae, Epipleminae

1240. *Callizia amorata* Pack. (7650. *Callizia amorata* Pack.) (Gray Scoopwing) – 23-VI-2002 1.

GEOMETRIDAE – Inchworm or Geometrid Moths

Geometridae, Larentiinae, Cidariini

1241. *Dysstroma citrata* (L.) (7182. *Dysstroma citrata* (L.)) (Dark Marbled Carpet) – 19-VIII-2004 1, 29A-VIII-2007 1 and 29B-VIII-2007 1.
1244. *Dysstroma truncata* (Hufn.) (7187. *Dysstroma truncata* (Hufn.)) (Marbled Carpet) – 17-VIII-2002 1 CBC and 24-VIII-2002 1 JV.
1252. *Eulithis propulsata* (Wlk.) (7199. *Eulithis propulsata* (Wlk.)) (Barred Yellow or Currant Eulithis) – 25A-VII-2008 1 and 25B-VII-2008 1.
1253. *Eulithis testata* (L.) (7201. *Eulithis testata* (L.)) (Chevron Moth) – 30-VIII-2002 1 JV, 1-IX-2002 1 JV, 30A-VIII-2009 1 and 30B-VIII-2009 1.
1255. *Eulithis flavibrunneata* (McD.) (7205. *Eulithis flavibrunneata* (McD.)) – 30B-VIII-2009 1.
1256. *Eulithis explanata* (Wlk.) (7206. *Eulithis explanata* (Wlk.)) (White Eulithis) – 8-VIII-2002 1, 25B-VII-2008 1 and 25C-VII-2008 1.
1257. *Eulithis xyliana* (Hulst) (7207. *Eulithis xyliana* (Hulst)) (The Phoenix) – 9-VII-2002 1, 2-VII-2003 1 JV, 4A-VII-2006 2 and 4B-VII-2006 1.

Geometridae, Larentiinae, Hydriomenini

1268. *Hydriomena divisaria* (Wlk.) (7235. *Hydriomena divisaria* (Wlk.)) (Transverse-banded Looper) – 12-VI-2002 1.
1271. *Hydriomena ruberata* (Frey.) (7254. *Hydriomena ruberata* (Frey.)) – 23-V-2001 3, 8-VI-2002 1 JV and 12-VI-2002 2.
1273. *Hydriomena furcata* (Thunb.) (7257. *Hydriomena furcata* (Thunb.)) (Common Highflyer) – 8-VIII-2002 1, 26-VIII-2002 1 and 19-VIII-2004 1.
1277. *Rheumaptera undulata* (L.) (7291. *Hydria undulata* (L.)) (Scallop Shell) – 8B-VII-2003 1.
1287. *Perizoma basaliata* (Wlk.) (7316. *Perizoma basaliata* (Wlk.)) (Twin-spot Wave) – 25C-VII-2008 1.
1289. *Perizoma custodiata* (Gn.) (7328. *Perizoma custodiata* (Gn.)) – 17B-VI-2003 1 and 27-V-2004 1.
1290. *Anticlea vasiliata* Gn. (7329. *Anticlea vasiliata* Gn.) (Variable Carpet) – 23-V-2001 1 and 17-V-2003 1 JV.

Geometridae, Larentiinae, Xanthorhoini

1293. *Xanthorhoe labradorensis* (Pack.) (7368. *Xanthorhoe labradorensis* (Pack.)) – 12-VI-2002 1.
1295. *Xanthorhoe abrasaria* (H.-S.) (7370. *Xanthorhoe abrasaria* (H.-S.)) – 29A-VI-2005 2 and 4B-VII-2006 1.
1304. *Xanthorhoe decoloraria* (Esp.) (7384. *Xanthorhoe decoloraria* (Esper)) (American Carpet) – 8-VIII-2002 1.
1308. *Epirrhoe alternata* (Müller) (7394. *Epirrhoe alternata* (Müller)) (White-banded Toothed Carpet) – 4A-VII-2006 1 and 4C-VII-2006 1.
1311. *Euphyia intermediata* (Haw.) (7399a. *Euphyia unangulata intermediata* (Gn.)) (Sharp-angled Carpet) – 8B-VII-2003 1.
1312. *Zenophleps alpinata* Cass. (7408. *Zenophleps alpinata* Cass.) – 8-VIII-2002 1, 17-VIII-2002 1 JV, 17-VIII-2002 1 CBC, 24-VIII-2002 1 JV, 26-VIII-2002 1, 22B-VIII-2003 1, 19-VIII-2004 1, 25A-VIII-2006 1, 25B-VIII-2006 1, 9C-IX-2006 1, 29A-VIII-2007 1, 29B-VIII-2007 1 and 30A-VIII-2009 1.

1314. *Orthonama obstipata* (F.) (7414. *Orthonama obstipata* (F.)) – 10-VI-2002 1.

Geometridae, Larentiinae, Asthenini

1316. *Hydrelia albifera* (Wlk.) (7423. *Hydrelia albifera* (Wlk.)) (Fragile White Carpet) – 25B-VII-2008 1.

1319. *Venusia pearsalli* (Dyar) (7429. *Venusia pearsalli* (Dyar)) (Pearsall's Wave) – 23-V-2001 1.

Geometridae, Larentiinae, Eupitheciini

1326. *Horisme intestinata* (Gn.) (7445. *Horisme intestinata* (Gn.)) (Brown Bark Carpet) – 9-VII-2002 1 and 4A-VII-2006 1.

1332. *Eupithecia columbiata* (Dyar) (7459. *Eupithecia columbiata* (Dyar)) (Columbia Pug) – 3-VI-2002 2.

1336. *Eupithecia subfuscata* (Haw.) (7487. *Eupithecia subfuscata* (Haw.)) (Grey Pug) – 23-V-2001 2.

1340. *Eupithecia albicapitata* Pack. (7574. *Eupithecia albicapitata* Pack.) – 22-VI-2004 1.

1346. *Eupithecia ravocostaliata* Pack. (7605. *Eupithecia ravocostaliata* Pack.) (Great Variegated Pug) – 23-V-2001 1, 23-V-2003 2 JV and 11B-V-2007 1.

1360. *Eupithecia assimilata* Dbldy. (7528. *Eupithecia fumosa* (Hulst)) – 12-VI-2002 1.

Geometridae, Larentiinae, Lobophorini

1375. *Cladara atroliturata* (Wlk.) (7639. *Cladara atroliturata* (Wlk.)) (The Scribbler) – 14A-V-2003 1 and 17-V-2003 1 JV.

1376. *Lobophora nivigerata* Wlk. (7640. *Lobophora nivigerata* Wlk.) (*Two-lined Aspen Looper*) – 17C-VI-2003 1.

Geometridae, Sterrhinae, Sterrhini

1379. *Idaea rotundopennata* (Pack.) (7125. *Idaea rotundopennata* (Pack.)) (Round-winged Wave) – 22-VI-2004 2.

Geometridae, Sterrhinae, Scopulini

1383. *Scopula limboundata* (Haw.) (7159. *Scopula limboundata* (Haw.)) (Large Lace-border) – 9-VII-2002 3, 25B-VII-2008 1 and 30A-VIII-2009 1.

1384. *Scopula ancellata* (Hulst) (7162. *Scopula ancellata* (Hulst)) – 8-VIII-2002 1.

1390. *Scopula inductata* Gn. (7169. *Scopula inductata* Gn.) (Soft-lined Wave) – 30A-VII-2003 1, 29A-VI-2005 1, 4A-VII-2006 1, 4C-VII-2006 1, 9A-IX-2006 1, 9B-IX-2006 1, 9C-IX-2006 2 and 25B-VII-2008 1.

1393. *Leptostales ferruminaria* (Zell.) (7180. *Leptostales ferruminaria* (Zell.)) – 23-V-2001 3 and 23-V-2003 1 JV.

Geometridae, Geometrinae, Nemoriini

1394. *Nemoria unitaria* (Pack.) (7018. *Nemoria unitaria* (Pack.)) – 14-VI-2002 1 JV, 9-VII-2002 1, 25B-VII-2008 1 and 25C-VII-2008 1.

Geometridae, Geometrinae, Synchronini

1399. *Synchlora aerata* (F.) (7058. *Synchlora aerata* (F.)) (Wavy-lined Emerald) – 4A-VII-2006 1, 4B-VII-2006 1 and 9C-IX-2006 1.

Geometridae, Ennomiinae, Cassymini

1405. *Nematocampa resistaria* (H.-S.) (7009. *Nematocampa resistaria* (H.-S.)) (Horned Spanworm Moth) – 24-VII-2002 1 JV, 25B-VII-2008 1 and 25C-VII-2008 1.

Geometridae, Ennomiinae, Cassymini

1406. *Protitame virginalis* (Hulst) (6270. *Protitame virginalis* (Hulst)) (Virgin Moth) – 17A-VI-2003 1, 30C-VII-2003 1, 22-VI-2004 1 and 29A-VI-2005 2.

Geometridae, Ennomiinae, Macariini

1410. *Speranza amboflava* (Ferg.) (6283. *Itame sulphurea* (Pack.)) (Spotted Sulphur) – 15-VII-2001 1 and 27-VII-2002 1.
1412. *Speranza exauspicata* (Wlk.) (6292. *Itame exauspicata* (Wlk.)) (Speckled Granite) – 9-VII-2002 1.
1416. *Speranza occiduaria* (Pack.) (6279. *Itame occiduaria* (Pack.)) (Western Sulphur) – 10-VI-2002 1 JV, 9-VII-2002 1, 8A-VII-2003 1, 8B-VII-2003 1, 30B-VII-2003 1, 30C-VII-2003 1, 22-VI-2004 4, 29A-VI-2005 1, 29B-VI-2005 1, 4A-VII-2006 1 and 4B-VII-2006 1.
1421. *Speranza loricaria* (Hulst) (6290. *Itame loricaria* (Evers.)) (False Bruce Spanworm) – 20-VI-2002 1 JV, 8A-VII-2003 1, 30B-VII-2003 1, 29A-VI-2005 1, 29B-VI-2005 1, 4A-VII-2006 2, 4B-VII-2006 1 and 4C-VII-2006 1.
1429. *Macaria signaria* (Hbn.) (6344. *Semiothisa signaria* (Hbn.)) (Pale Marked Angle) – 20-VI-2002 1 JV and 29A-VI-2005 1.
1431. *Digrammia californiaria* (Pack.) (6380. *Semiothisa californiaria* (Pack.)) – 30A-VIII-2009 1.
1433. *Digrammia denticulata* Grt. (6373. *Semiothisa denticulata* Grt.) (Striped Granite) – 3-VI-2002 2, 8-VIII-2002 2, 17-VIII-2002 1 CBC, 11-IX-2002 1, 8A-VII-2003 1, 27-V-2004 3 and 19-VIII-2004 1.
1436. *Digrammia rippertaria* (Dup.) (6394. *Semiothisa hebetata* (Hulst)) – 9-VII-2002 1, 17A-VI-2003 1, 8A-VII-2003 1, 8B-VII-2003 1, 22-VI-2004 2, 29A-VI-2005 1, 4A-VII-2006 2, 4B-VII-2006 1 and 4C-VII-2006 1.
1437. *Digrammia decorata* (Grossb.) (6389. *Semiothisa arubrescens* McD.) – 30-VIII-2002 1 JV.
1438. *Digrammia mellistrigata* (Grt.) (6397. *Semiothisa mellistrigata* (Grt.)) – 6-IX-2002 1 JV, 8A-VII-2003 1, 19-VIII-2004 1, 29A-VI-2005 1 and 30A-VIII-2009 1.
1440. *Digrammia neptaria* (Gn.) (6396. *Semiothisa neptaria* (Gn.)) – 24-VIII-2002 1 JV, 26-VIII-2002 1, 30C-VII-2003 1, 27-V-2004 2, 22-VI-2004 1, 19-VIII-2004 2 and 4A-VII-2006 1.

Geometridae, Ennomiinae, Boarmiini

1445. *Hesperumia sulphuraria* Pack. (6431. *Hesperumia sulphuraria* Pack.) (Sulphur Moth) – 4A-VII-2006 1, 25A-VII-2008 1, 25B-VII-2008 1 and 25C-VII-2008 1.
1450. *Aethalura intertexta* (Wlk.) (6570. *Aethalura intertexta* (Wlk.)) (Smoky Carpet) – 14A-V-2003 1.
1455. *Ectropis crepuscularia* (D. & S.) (6597. *Ectropis crepuscularia* (D. & S.)) (The Small Engrailed) – 23-V-2001 2 and 23-V-2003 1 JV.

Geometridae, Ennomiinae, Bistonini

1460. *Biston betularia* (L.) (6640. *Biston betularia* (L.)) (Salt-and-Pepper Moth) – 9-VII-2002 3 and 17-VIII-2002 1 JV.
1461. *Lycia ursaria* (Wlk.) (6651. *Lycia ursaria* (Wlk.)) (The Bear or the Stout Spanworm Moth) – 2-V-2003 1 JV and 11A-V-2007 1.
1463. *Hypagyrtis unipunctata* (Haw.) (6654. *Hypagyrtis unipunctata* (Haw.)) (One-spotted Variant) – 19-VI-2002 1 JV, 9-VII-2002 2 and 8B-VII-2003 1.
1467. *Erannis tiliaria* (Harr.) (6665. *Erannis tiliaria* (Harr.)) (Linden Looper Moth) – 22-IX-2002 1 JV and 9B-IX-2006 1.

Geometridae, Ennomiinae, Caberini

1472. *Cabera erythemaria* Gn. (6677. *Cabera erythemaria* Gn.) (Yellow-dusted Cream Moth) – 9-VII-2002 2 and 29A-VI-2005 2, 30B-V-2006 1, 4A-VII-2006 1, 4B-VII-2006 2, 4C-VII-2006 1, 29A-VIII-2007 1, 29B-VIII-2007 1, 25B-VII-2008 1 and 25C-VII-2008 1.
1473. *Cabera variolaria* Gn. (6678. *Cabera variolaria* Gn.) (Pale Striped Willow Spanworm) – 9-VI-2002 1 JV, 9-VII-2002 2, 29A-VI-2005 2, 29A-VIII-2007 1, 29B-VIII-2007 1, 29C-VIII-2007 1 and 25C-VII-2008 1.

Geometridae, Ennomiinae, Angeronini

1480. *Aspitates aberratus* (Hy. Edw.) (6715. *Aspitates aberratus* (Hy. Edw.)) – 23-V-2001 3, 27-V-2004 1 and 30A-V-2006 1.
1482. *Euchlaena obtusaria* (Hbn.) (6726. *Euchlaena obtusaria* (Hbn.)) (Obtuse Euchlaena) – 9-VI-2002 1 JV.
1483. *Euchlaena johnsonaria* (Fitch) (6729. *Euchlaena johnsonaria* (Fitch)) (Johnson's Euchlaena) – 29-VI-2002 1 JV, 9-VII-2002 1, 8A-VII-2003 1, 8B-VII-2003 1, 4A-VII-2006 1, 4B-VII-2006 1, 4C-VII-2006 1 and 29A-VIII-2007 1.
1484. *Euchlaena madusaria* (Wlk.) (6731. *Euchlaena madusaria* (Wlk.)) – 9-VII-2002 1.
1485. *Euchlaena marginaria* (Minot) (6734. *Euchlaena marginaria* (Minot)) (Ochre Euchlaena) – 23-V-2001 1, 3-VI-2002 1, 7-VI-2002 1 JV, 10-VI-2002 1 JV and 12-VI-2002 1.
1486. *Euchlaena tigrinaria* (Gn.) (6737. *Euchlaena tigrinaria* (Gn.)) (Mottled Euchlaena or Variable Thorn) – 29-VI-2002 1 JV, 8A-VII-2003 1, 8B-VII-2003 1, 4A-VII-2006 1, 4B-VII-2006 1, 25B-VII-2008 1 and 25C-VII-2008 1.
1488. *Xanthotype sospeta* (Drury) (6743. *Xanthotype sospeta* (Drury)) (Crocus Geometer) – 28-VIII-2002 1 JV, 8A-VII-2003 1, 29A-VI-2005 1, 4A-VII-2006 1, 4B-VII-2006 1 and 25C-VII-2008 1.

Geometridae, Ennomiinae, Azelini

1490. *Pero morrisonaria* (Hy. Edw.) (6755. *Pero morrisonaria* (Hy. Edw.)) (Lesser Umber) – 23-V-2001 1 and 19-VI-2002 1 JV.

Geometridae, Ennomiinae, Campaeini

1494. *Campaea perlata* (Gn.) (6796. *Campaea perlata* (Gn.)) (Pale Beauty or Fringed Looper Moth) – 4A-VII-2006 1, 4B-VII-2006 1, 25B-VII-2008 1, 25C-VII-2008 1 and 30A-VIII-2009 1.

Geometridae, Ennomiinae, Ennomini

1495. *Ennomos magnaria* Gn. (6797. *Ennomos magnaria* Gn.) (Maple Spanworm) – 17-VIII-2002 1 JV, 30-VIII-2002 1 JV, 11-IX-2002 1, 22B-VIII-2003 1, 13C-IX-2003 1 and 29B-VIII-2007 1.

Geometridae, Ennomiinae, Anagogini

1501. *Selenia alciphearia* Wlk. (6817. *Selenia alciphearia* Wlk.) (Northern Selenia) – 23-V-2001 1, 29-VI-2002 1 JV, 24-V-2003 1 JV and 26B-V-2007 1.
1502. *Selenia kentaria* (G. & R.) (6818. *Selenia kentaria* (G. & R.)) (Kent's Geometer) – 23-V-2001 1, 30B-V-2006 1 and 11B-V-2007 1.
1503. *Metanema inatomaria* Gn. (6819. *Metanema inatomaria* Gn.) (Pale Metanema) – 14-VI-2002 1 JV and 30B-V-2006 1.
1504. *Metanema determinata* Wlk. (6820. *Metanema determinata* Wlk.) (Dark Metanema) – 9-VII-2002 1, 2-VII-2003 1 JV, 22-VI-2004 1, 29A-VI-2005 1, 30A-V-2006 1, 4A-VII-2006 1 and 4C-VII-2006 1.
1506. *Metarranthis duaria* (Gn.) (6822. *Metarranthis duaria* (Gn.)) (Ruddy Metarranthis) – 23-V-2001 3, 3-VI-2002 4, 12-VI-2002 1, 29-VI-2002 1 JV, 30A-V-2006 2, 30B-V-2006 2 and 30C-V-2006 1.
1507. *Probole alienaria* (H.-S.) (6837. *Probole alienaria* (H.-S.)) – 23-V-2001 2, 3-VI-2002 3 and 12-VI-2002 1, 30A-V-2006 1, 30B-V-2006 1 and 30C-V-2006 1.
1508. *Probole amcaria* (H.-S.) (6838. *Probole amcaria* (H.-S.)) (Friendly Probole) – 12-VI-2002 1 JV and 29A-VI-2005 1.
1509. *Plagodis pulveraria* (L.) (6836. *Anagoga occiduaria* (Wlk.)) (American Barred Umber) – 23-V-2001 1, 3-VI-2002 1 and 12-VI-2002 1.
1510. *Plagodis phlogosaria* (Gn.) (6842. *Plagodis phlogosaria* (Gn.)) (Straight-lined Plagodis) – 23-V-2001 1, 3-VI-2002 4, 17-V-2003 1 JV and 27-V-2004 1.

Geometridae, Ennomiinae, Ourapterygini

1513. *Caripeta divisata* Wlk. (6863. *Caripeta divisata* Wlk.) (Gray Spruce Looper) – 29A-VI-2005 1.
1522. *Sicya macularia* (Harr.) (6912. *Sicya macularia* (Harr.)) (Pink-bordered Yellow) – 4A-VII-2006 1, 4B-VII-2006 1, and 25B-VII-2008 2.
1524. *Synaxis jubararia* (Hulst) (6954. *Synaxis jubararia* (Hulst)) (October Thorn) – 28-IX-2002 1 JV, 9A-IX-2006 1, 9B-IX-2006 1 and 9C-IX-2006 1.
1528. *Tetracis crocallata* Gn. (6963. *Tetracis crocallata* Gn.) (Yellow Slant-line) – 3-VI-2002 1, 16-VI-2002 1 JV, 9-VII-2002 1, 30A-V-2006 1 and 30B-V-2006 1.
1531. *Prochoerodes lineola* (Göze) (6982. *Prochoerodes transversata* (Drury)) (Large Maple Spanworm) – 17-VIII-2002 1 JV, 24-VIII-2002 1 JV, 26-VIII-2002 1, 11-IX-2002 1, 19-VIII-2004 1, 9A-IX-2006 1, 29A-VIII-2007 1, 30A-VIII-2009 1 and 30B-VIII-2009 1.

LASIOCAMPIDAE – Tent Caterpillar and Lappet Moths

Lasiocampidae, Lasiocampinae, Gastropachini

1536. *Phyllodesma americana* (Harr.) (7687. *Phyllodesma americana* (Harr.)) (Lappet Moth) – 230V-2001 2, 3-VI-2002 1, 12-VI-2002 1, 12-VI-2002 1 JV, 28-V-2004 1 and 30B-V-2006 1.

Lasiocampidae, Lasiocampinae, Lasiocampini

1537. *Malacosoma disstria* Hbn. (7698. *Malacosoma disstria* Hbn.) (Forest Tent Caterpillar) – 9-VII-2002 1 and 4C-VII-2006 1.
 1538. *Malacosoma californicum* (Pack.) (7702. *Malacosoma californicum* (Pack.)) (Western Tent Caterpillar) – 9-VII-2002 1, 9-VIII-2002 1, 8A-VII-2003 1, 30B-VII-2003 1, 30C-VII-2003 1, 29A-VI-2005 1 and 4A-VII-2006 1.

SATURNIDAE – Large Silkworm Moths

Saturniidae, Saturniinae, Saturniini

1542. *Antheraea polyphemus* (Cram.) (7757. *Antheraea polyphemus* (Cram.)) (Polyphemus Moth) – 23-V-2001 2, 23-V-2002 2, 8-VI-2002 1 JV, 12-VI-2002 2, 27-V-2004 1 and 22-VI-2004 1.

Saturniidae, Saturniinae, Attacini

1544. *Hyalophora gloveri* (Stkr.) (7769. *Hyalophora gloveri* (Stkr.)) (Glover's Silk-moth) – 27-V-2003 1 JV.

SPHINGIDAE – Sphinx Moths

Sphingidae, Sphinginae, Sphingini

1548. *Sphinx vashti* Stkr. (7803. *Sphinx vashti* Stkr.) (Vashti or Snowberry Sphinx) – 23-V-2001 4, 31-V-2002 1 JV, 3-VI-2002 1, 17A-VI-2003 1, 28A-V-2004 2, 28B-V-2004 4 SR, 22-VI-2004 1, 29A-VI-2005 1 and 4B-VII-2006 1.
 1550. *Sphinx luscitiosa* Clem. (7811. *Sphinx luscitiosa* Clem.) (Clemen's Sphinx Moth) – 17C-VI-2003 1. Rare in Alberta.
 1551. *Sphinx drupiferarum* J.E. Sm. (7812. *Sphinx drupiferarum* J.E. Smith) (Wild Cherry Sphinx) – 28B-V-2004 1. Also rare in Alberta.

Sphingidae, Sphinginae, Smerinthini

1553. *Smerinthus jamaicensis* (Drury) (7821. *Smerinthus jamaicensis* (Drury)) (Twin-spotted Sphinx) – 29-VI-2002 1 JV, 28-V-2004 1, 22A-VI-2004 1 SR, 22B-VI-2004 2 SR and 30A-V-2006 1.
 1554. *Smerinthus cerisyi* Kby. (7822. *Smerinthus cerisyi* Kby.) (One-eyed Sphinx) – 23-V-2001 2, 3-VI-2002 1, 7-VI-2002 1, 12-VI-2002 1, 28A-V-2004 3 SR, 22A-VI-2004 3 SR, 22B-VI-2004 4 SR, 30B-V-2006 1, 29A-VIII-2007 1 and 25C-VII-2008 1.
 1556. *Paonias excaecatus* (J.E. Sm.) (7824. *Paonias excaecatus* (J.E. Smith)) (Blinded Sphinx) – 17A-VI-2003 1, 17B-VI-2003 1, 13-VII-2003 1 JV, 27-V-2004 1, 22A-VI-2004 1 (3 SR), 22B-VI-2004 2 SR and 30A-V-2006 1.

1557. *Paonias myops* (J.E. Sm.) (7825. *Paonias myops* (J.E. Smith)) (Small-eyed Sphinx) – 23-V-2001 1, 29-VI-2002 1 JV and 25B-VII-2008 1.
1558. *Pachysphinx modesta* (Harr.) (7828. *Pachysphinx modesta* (Harr.)) (Big Poplar Sphinx) – 14-VI-2002 1 JV, 27-V-2004 2, 22-VI-2004 1 and 4B-VII-2006 1.

Sphingidae, Macroglossinae, Macroglossini

1570. *Hyles gallii* (Rott.) (7893. *Hyles gallii* (Rottemburg)) (Galium Sphinx or Bedstraw Hawkmoth) – 29A-VI-2005 1.

NOTODONTIDAE – Prominent Moths

Notodontidae, Pygaerinae

1572. *Clostera albosigma* (Fitch) (7895. *Clostera albosigma* Fitch) (Sigmoid Prominent) – 23-V-2001 4, 6-VI-2002 1 JV, 12-VI-2002, 29A-VI-2005 1, 4A-VII-2006 1, 25B-VII-2008 1 and 25C-VII-2008 1.
1573. *Clostera strigosa* (Grt.) (7898. *Clostera strigosa* (Grt.)) (Striped Chocolate-tip Moth) – 30C-V-2006 1.
1575. *Clostera apicalis* (Wlk.) (7901. *Clostera apicalis* (Wlk.)) (Common Chocolate-tip or Red-marked Tentmaker) – 23-V-2001 3, 3-VI-2002 1, 27-V-2004 1, 30A-V-2006 1, 30B-V-2006 1 and 30C-V-2006 1.

Notodontidae, Notodontinae, Notodontini

1576. *Pheosia rimosa* Pack. (7922. *Pheosia rimosa* Pack.) (Black-rimmed Prominent) – 9-VII-2002 1, 30A-V-2006 1, 30B-V-2006 1, 30C-V-2006 1, 4A-VII-2006 1, 29A-VIII-2007 1 and 25C-VII-2008 1.
1577. *Odontosia elegans* (Stkr.) (7924. *Odontosia elegans* (Stkr.)) (Elegant Prominent) – 9-VII-2002 1, 1-VII-2003 1 JV, 22-VI-2004 1 and 4A-VII-2006 1.
1578. *Notodonta scitipennis* Wlk. (7926. *Notodonta scitipennis* Wlk.) (Base-streaked Prominent) – 8A-VII-2003 1.
1579. *Notodonta torva* Hbn. (7928. *Notodonta torva* (Hübner)) (Simple Prominent) – 23-V-2001 2, 3-VI-2002 2, 12-VI-2002 1, 17-VIII-2002 1 JV, 24-V-2003 1 JV, 27-V-2004 1, 22-VI-2004 1 and 30C-V-2006 1.

Notodontidae, Notodontinae, Dicranurini

1580. *Gluphisia septentrionis* Wlk. (7931. *Gluphisia septentrionis* Wlk.) (Small Pebble or Common Gluphisia) – 9-VII-2002 1, 29A-VI-2005 1, 30B-V-2006 1, 4A-VII-2006 1, 4B-VII-2006 1 and 4C-VII-2006 1.
1585. *Furcula occidentalis* (Lint.) (7939. *Furcula occidentalis* (Lint.)) (Willow Kitten) – 29A-VI-2005 1.
1586. *Furcula scolopendrina* (Bdv.) (7940. *Furcula scolopendrina* (Bdv.)) (Poplar Kitten) – 22-VI-2004 1.

Notodontidae, Phalerinae

1589. *Nadata gibbosa* (J.E. Sm.) (7915. *Nadata gibbosa* (J.E. Smith)) (White-dotted Prominent) – 3-VI-2002 1, 20-VI-2002 1 JV, 29-VI-2002 1 JV, 8A-VII-2003 1, 22B-VI-2004 2 (4 SR), 29A-VI-2005 1, 30C-V-2006 1, 4B-VII-2006 1 and 25B-VII-2008 1.

Notodontidae, Heterocampinae

1591. *Schizura unicornis* (J.E. Sm.) (8007. *Schizura unicornis* (J.E. Smith)) (Variegated Prominent) – 23-V-2001 1, 4A-VII-2006 1, 4B-VII-2006 1, 29A-VIII-2007 1 and 25B-VII-2008 1.
 1592. *Schizura leptinoides* (Grt.) (8011. *Schizura leptinoides* (Grt.)) (Black-blotched Schizura) – 22-VI-2002 1 JV.
 1593. *Oligocentria semirufescens* (Wlk.) (8012. *Oligocentria semirufescens* (Wlk.)) (Red-washed Prominent) – 4A-VII-2006 1, 4B-VII-2006 1 and 25C-VII-2008 1.

EREBIDAE – Quadrifine Noctuoids

Erebidae, Lymantriinae, Orgyiini

1600. *Dasychira vagans* (B. & McD.) (8294. *Dasychira vagans* (B. & McD.)) (Variable Tussock Moth) – 30-VI-2003 1 JV, 8B-VII-2003 1, 4A-VII-2006 1 and 25C-VII-2008 1.

Erebidae, Arctiinae, Lithosiini

1606. *Hypoprepia miniata* (Kby.) (8089. *Hypoprepia miniata* (Kby.)) (Scarlet-winged Lichen Moth) – 4C-VII-2006 2.
 1608. *Clemensia albata* Pack.) (8098. *Clemensia albata* Pack.) (Little White Lichen Moth) – 4B-VII-2006 1, 25B-VII-2008 1 and 25C-VII-2008 1.
 1609. *Eilema bicolor* (Grt.) (8043. *Eilema bicolor* (Grt.)) (Bicolored Moth) – 8-VIII-2002 3, 15-VIII-2002 1 JV, 26-VIII-2002 2, 11-IX-2002 2, 30B-VII-2003 1, 19-VIII-2004 1, 25B-VII-2008 1 and 25C-VII-2008 1.
 1610. *Crambidia casta* (Pack.) (8051. *Crambidia casta* (Pack.)) (Pearly-winged Lichen Moth) – 26-VIII-2002 1, 11-IX-2002 2, 11-IX-2002 1 JV, 22B-VIII-2003 1, 22C-VIII-2003 1, 19-VIII-2004 1 and 30C-VIII-2009 1.

Erebidae, Arctiinae, Arctiini

1613. *Virbia ferruginosa* (Wlk.) (8123. *Holomelina ferruginosa* (Wlk.)) (Rusty Holomelina) – 9-VII-2002 3, 24-VII-2002 1 JV, 9-VIII-2002 1, 8B-VII-2003 1, 4A-VII-2006 1, 4C-VII-2006 1, 25B-VII-2008 1 and 25C-VII-2008 1.
 1619. *Grammia virgo* (L.) (8197. *Grammia virgo* (L.)) (Virgin Tiger Moth) – 29-VI-2002 1 JV, 9-VII-2002 2, 8A-VII-2003 1, 8B-VII-2003 1, 4A-VII-2006 1, 4C-VII-2006 1 and 25B-VII-2008 1.
 1620. *Grammia parthenice* (W. Kby.) (8196. *Grammia parthenice* (W. Kby.)) (Parthenice Tiger Moth) – 8-VIII-2002 3, 17-VIII-2002 1 CBC, 26-VIII-2002 1, 30B-VII-2003 1, 30C-VII-2003 1, 30B-VII-2006 1, 30C-VII-2006 1, 25A-VII-2008 1, 25B-VII-2008 1 and 25C-VII-2008 1.
 1621. *Grammia virguncula* (W. Kby.) (8175. *Grammia virguncula* (W. Kby.)) (Little Virgin Moth) – 8A-VII-2003 1 and 8B-VII-2003 1.
 1625. *Grammia williamsii* (Dodge) (8186. *Grammia williamsii* (Dodge)) (William's Tiger Moth) – 9-VII-2002 1, 27-V-2004 1, 29A-VI-2005 2 and 4C-VII-2006 1.
 1631. *Platarctia parthenos* (Harr.) (8162. *Platarctia parthenos* (Harr.)) (Saint Lawrence Tiger Moth) – 12-VI-2002 1 JV, 30B-V-2006 1 and 4C-VII-2006 1.

1632. *Arctia caja* (L.) (8166. *Arctia caja* (L.)) (Great Tiger Moth) – 25A-VII-2008 1.
1635. *Phragmatobia assimilans* Wlk. (8158. *Phragmatobia assimilans* Wlk.) (Large Ruby Tiger Moth) – 23-V-2001 4, 31-V-2002 1 JV, 3-VI-2002 2, 28A-V-2004 2 SR, 28B-V-2004 2 SR and 28C-V-2004 2 SR, and 30B-V-2006 1.
1636. *Pyrrharctia isabella* (J.E. Sm.) (8129. *Pyrrharctia isabella* (J.E. Smith)) (Isabella Tiger Moth) – 22-VI-2002 1 JV and 6-VII-2002 1.
1637. *Estigmene acraea* (Drury) (8131. *Estigmene acraea* (Drury)) (Salt Marsh Moth) – 12-VI-2002 1 JV.
1639. *Spilosoma congrua* (Wlk.) (8134. *Spilosoma congrua* (Wlk.)) – 23-V-2001 1, 22-VI-2004 1, 30B-V-2006 1 and 30C-V-2006 1.
1641. *Spilosoma virginica* (F.) (8137. *Spilosoma virginica* (F.)) (Virginian Tiger Moth, Red-marked Tentmaker or Yellow Woolly-bear) – 23-V-2001 1 and 30C-V-2006 1.
1649. *Lophocampa maculata* Harr. (8214. *Lophocampa maculata* Harr.) (Spotted Tussock Moth) – 14-VI-2002 1 JV.
1652. *Ctenucha virginica* (Esp.) (8262. *Ctenucha virginica* (Esp.)) (Virginia Ctenucha) – 29-VI-2002 1 JV.
1653. *Cisseps fulvicollis* (Hbn.) (8267. *Cisseps fulvicollis* (Hbn.)) (Yellow-collared Scape Moth) – 4A-VII-2006 2.

Erebidae, Herminiinae

1654. *Idia americalis* (Gn.) (8322. *Idia americalis* (Gn.)) (American Snout Moth) – 9-VII-2002 1, 17-VIII-2002 1 CBC, 26-VIII-2002 1, 11-IX-2002 2, 8A-VII-2003 1, 8B-VII-2003 1, 30B-VII-2003 1, 19-VIII-2004 1, 29A-VI-2005 1, 4A-VII-2006 1, 4B-VII-2006 1, 4C-VII-2006 1, 9A-IX-2006 1, 9B-IX-2006 1, 25A-VII-2008 1, 25B-VII-2008 1, 25C-VII-2008 1, 30A-VIII-2009 1 and 30B-VIII-2009 1.
1662. *Zanclognatha lotalba* (Sm.) (8354. *Zanclognatha lotalba* (Sm.)) (The Canadian Zanclognatha) – 25B-VII-2008 1 and 25C-VII-2008 1.
1663. *Chytolita petrealis* Grt. (8356. *Chytolita petrealis* Grt.) (Lesser Luteous Snout) – 12-VI-2002 1, 17B-VI-2003 1, 17C-VI-2003 2 and 22-VI-2004 2.
1666. *Phalaenostola metonalis* (Wlk.) (8362. *Phalaenostola metonalis* (Wlk.)) (Pale Phalaenostola or Tufted Snout) – 4A-VII-2006 1, 4B-VII-2006 1 and 4C-VII-2006 1.
1668. *Bleptina caradrinalis* Gn. (8370. *Bleptina caradrinalis* Gn.) (Variable Snout Moth) – 9-VII-2002 1.
1669. *Palthis angulalis* (Hbn.) (8397. *Palthis angulalis* (Hbn.)) (Angulated Snout Moth) – 19-VI-2002 1 JV.

Erebidae, Rivulinae

1671. *Rivula propinqualis* Gn. (8404. *Rivula propinqualis* Gn.) (Yellow Snout Moth) – 6-IX-2002 1 JV4A-VII-2006 1, 4C-VII-2006 1, 9B-IX-2006 1, 25B-VII-2008 1, 25C-VII-2008 2 and 30A-VIII-2009 1.

Erebidae, Hypeninae

1676. *Hypena edictalis* (Wlk.) (8452. *Bomolocha edictalis* (Wlk.)) (Large Bomolocha) - 29A-VIII-2007 1
1677. *Hypena humuli* Harr. (8461. *Hypena humuli* Harr.) (Hop-vine Snout Moth) – 11-IX-2002 1.

Erebidae, Scoliopteryginae, Scoliopterygini

1680. *Scoliopteryx libatrix* (L.) (8555. *Scoliopteryx libatrix* (L.)) (The Herald) – 30B-V-2006 2.

Erebidae, Hypenodinae

1681. *Hypenodes fractilinea* (Sm.) (8421. *Hypenodes fractilinea* (Sm.)) (Broken-line Hypenodes) – 8B-VII-2003 1.

Erebidae, Boletobiinae

1683. *Mycterophora inexplicata* (Wlk.) (8413. *Mycterophora inexplicata* (Wlk.)) (Pale-edged Snout-moth) – 17-VIII-2002 1 CBC, 25B-VII-2008 1 and 25C-VII-2008 1.

Erebidae, Erebinae, Euclidiini

1698. *Euclidea cuspeida* (Hbn.) (8731. *Euclidea cuspeida* (Hbn.)) (Pointed Grass Moth) – 23-V-2001 2, 14-VI-2002 1 JV and 17-VI-2003 1 JV.

Erebidae, Erebinae, Eucliniini

1700. *Caenurgina crassiuscula* (Haw.) (8738. *Caenurgina crassiuscula* (Haw.)) (Clover Looper Moth) – 23-V-2001 5, 29-VI-2002 1 JV, 26-VIII-2002 1, 17A-VI-2003 1, 30B-VII-2003 1, 27-V-2004 1, 19-VIII-2004 1, 30A-V-2006 1, 30C-V-2006 1, 4A-VII-2006 1, 4B-VII-2006 1, 4C-VII-2006 1 and 9C-IX-2006 1.

1701. *Caenurgina erechtea* (Cram.) (8739. *Caenurgina erechtea* (Cram.)) (Forage Looper Moth) – 25A-VII-2008 1.

Erebidae, Erebinae, Ophiusini

1703. *Zale minerea* (Gn.) (8697. *Zale minerea* (Gn.)) (Colorful Zale) – 23-V-2001 14 and 3-VI-2002 1.

Erebidae, Erebinae, Catocalini

1705. *Catocala relictata* Wlk. (8803. *Catocala relictata* Wlk.) (White Underwing) – 8-VIII-2002 1, 17-VIII-2002 1 JV, 11-IX-2002 2, 22A-VIII-2003 1 SR, 22B-VIII-2003 1 SR and 22C-VIII-2003 1 SR.

1706. *Catocala unijuga* Wlk. (8805. *Catocala unijuga* Wlk.) (Once-married Underwing) – 25B-VII-2008 1.

1711. *Catocala briseis* Edw. (8817. *Catocala briseis* Edw.) (Ribbed or Briseis Underwing) – 8-VIII-2002 1, 26-VIII-2002 1, 1-IX-2002 1 JV, 13C-IX-2003 1 and 25A-VIII-2006 1.

1719. *Catocala blandula* Hulst (8867. *Catocala blandula* Hulst) (Charming Underwing) – 8-VIII-2002 1, 19-VIII-2004 1, 25B-VII-2008 1 and 30A-VIII-2009 1.

NOCTUIDAE – Owlets or Noctuid Moths**Noctuidae, Risobinae**

1724. *Baileya ophthalmica* (Gn.) (8970. *Baileya ophthalmica* (Gn.)) (Eyed Baileya) – 23-V-2001 1.

Noctuidae, Plusiinae, Plusiini

1727. *Diachrysia aeroides* (Grt.) (8896. *Diachrysia aeroides* (Grt.)) (Dark-spotted Looper Moth) – 4A-VII-2006 1 and 4C-VII-2006 1.
1733. *Eosphoropteryx thyatyroides* (Gn.) (8905. *Eosphoropteryx thyatyroides* (Gn.)) – 25B-VII-2008 1 (Pink-patched Looper Moth or Pink-patched Beauty) – 25B-VII-2008 1.
1740. *Autographa californica* (Spey.) (8914. *Autographa californica* (Speyer)) (Alfalfa Looper) – 22A-VIII-2003 1, 22C-VIII-2003 1 and 13C-IX-2003 1.
1744. *Autographa ampla* (Wlk.) (8923. *Autographa ampla* (Wlk.)) (Broken-banded Y or Large Looper Moth) – 29A-VI-2005 1.
1745. *Anagrapha falcifera* (Kby.) (8924. *Anagrapha falcifera* (Kby.)) (Celery Looper) – 22C-VIII-2003 1, 29A-VIII-2007 1 and 9-IX-2007 1.
1746. *Syngrapha octoscripta* (Grt.) (8926. *Syngrapha octoscripta* (Grt.)) – 26-VIII-2002 1.
1748. *Syngrapha viridisigma* (Grt.) (8929. *Syngrapha viridisigma* (Grt.)) (Green-marked Looper) – 17-VIII-2002 1 CBC, 30A-VIII-2009 1 and 30B-VIII-2009 1.
1763. *Plusia putnami* Grt. (8950. *Plusia putnami* Grt.) (Putnam's Looper Moth) – 4A-VII-2006 1.
1765. *Plusia venusta* Wlk. (8953. *Plusia venusta* Wlk.) (White-streaked Looper Moth) – 6-IX-2002 1 JV.

Noctuidae, Eustrotiinae

1767. *Protodeltote albidula* (Gn.) (9048. *Lithacodia albidula* (Gn.)) (Common Midget) – 9-VII-2002 2, 29A-VI-2005 3 and 29B-VI-2005 1.

Noctuidae, Dilobinae

1778. *Raphia frater* Grt. (9193. *Raphia frater* Grt.) (The Brother) – 23-V-2001 2, 20-VI-2002 1, 8A-VII-2003 1, 28A-V-2004 2 (2 SR) and 4A-VII-2006 1.

Noctuidae, Acronictinae

1784. *Acronicta innotata* Gn. (9207. *Acronicta innotata* Gn.) (Unmarked Dagger Moth) – 20-VI-2002 1 JV and 9-VII-2002 1.
1787. *Acronicta grisea* (Wlk.) (9212. *Acronicta grisea* (Wlk.)) (Gray Dagger Moth) – 30B-V-2006 1 and 30C-V-2006 1.
1790. *Acronicta superans* Gn. (9226. *Acronicta superans* Gn.) (The Chieftain Dagger Moth) – 23-V-2001 3, 3-VI-2002 1 and 25C-VII-2008 1.
1791. *Acronicta hasta* Gn. (9229. *Acronicta hasta* Gn.) (The Forked Dagger Moth) – 23-V-2001 1 and 3-VI-2002 2.
1793. *Acronicta fragilis* (Gn.) (9241. *Acronicta fragilis* (Gn.)) (Fragile Dagger Moth) – 3-VI-2002 1, 9-VII-2002 1 and 30B-V-2006 1.
1794. *Acronicta impleta* Wlk. (9257. *Acronicta impleta* Wlk.) (Yellow-haired Dagger Moth) – 23-V-2001 2 and 3-VI-2002 1.
1796. *Acronicta impressa* (Wlk.) (9261. *Acronicta impressa* (Wlk.)) (Willow Dagger Moth) – 25B-VII-2008 1.
1801. *Simyra insularis* (H.-S.) (9280. *Simyra henrici* (Grt.)) – 23-V-2001 1.

Noctuidae, Cuculliinae

1807. *Cucullia postera* Gn. (10198. *Cucullia postera* Gn.) – 17A-VI-2003 1.

Noctuidae, Amphipyridae, Psaphidini

1818. *Brachionycha borealis* (Sm.) (10011. *Brachionycha borealis* (Sm.)) (Northern Sallow) – 1-V-2002 1.

Noctuidae, Oncocnemidinae

1828. *Pleromelloida conserta* (Grt.) (10028. *Pleromelloida obliquata* (Sm.)) (Oblique Rover) – 14A-V-2003 1, 14B-V-2003 1, 11A-V-2007 1, 11B-V-2007 1 and 11C-V-2007 1.

1836. *Sympistis stabilis* Sm. (10062. *Homohadena stabilis* Sm.) – 30B-VII-2003 2, 4A-VII-2006 1 and 4C-VII-2006 2.

1837. *Sympistis badistriga* (Grt.) (10059. *Homohadena basistriga* (Grt.)) (Brown-lined Sallow) – 9-VII-2002 1.

1838. *Sympistis dinalda* (Sm.) (10065. *Homohadena infixa* (Wlk.)) (Broad-lined Sallow) – 9-VII-2002 2, 30A-VII-2003 1 and 25B-VII-2008 1.

1843. *Sympistis poliochlora* Hamp. (10140. *Oncocnemis poliochroa* Hamp.) – 13A-IX-2003 1.

1844. *Sympistis mackiei* (B. & Benj.) (10143. *Oncocnemis mackiei* (B. & Benj.)) (Mackie's Beauty) – 11-IX-2002 8, 25A-VIII-2006 1 and 9C-IX-2006 1.

1845. *Sympistis cibalis* Grt. (10124. *Oncocnemis cibalis* Grt.) (Delicate Beauty) – 9A-IX-2006 1.

Noctuidae, Condicinae, Leuconictini

1871. *Leuconicta lepidula* (Grt.) (9066. *Leuconicta lepidula* (Grt.)) (Brown Leuconycta) – 19-VI-2002 1 JV.

Noctuidae, Heliethinae

1883. *Schinia meadi* (Grt.) (11175. *Schinia meadi* (Grt.)) (Mead's Flower Moth) – 17A-VI-2003 1.

Noctuidae, Noctuinae, Pseudostratiini

1897. *Pseudostrotia carneola* (Gn.) (9053. *Pseudostrotia carneola* (Gn.)) (Pink-barred Lithacodia) – 23-V-2001 2 and 25B-VII-2008 1.

1898. *Anterastria teratophora* (H.-S.) (9284. *Agriopodes teratophora* (H.-S.)) (The Gray Marvel) – 23-V-2001 2.

Noctuidae, Noctuinae, Caradrini

1905. *Caradrina montana* (Bremer) (9656. *Platyperigea extima* (Wlk.)) (Civil Rustic) – 8-VIII-2002 2, 26-VIII-2002 1, 11-IX-2002 1, 17A-VI-2003 1, 9A-IX-2006 1 and 9B-IX-2006 1.

1906. *Proxenus miranda* (Grt.) (9647. *Proxenus miranda* (Grt.)) (Glistening Rustic) – 9-VII-2002 2, 17C-VI-2003 1, 9A-VII-2003 1, 8B-VII-2003 1, 22-VI-2004 1, 29A-VI-2005 1, 30B-V-2006 1, 4A-VII-2006 1, 4C-VII-2006 1 and 25A-VII-2008 1.

1907. *Proxenus mendosa* McD. (9649. *Proxenus mendosa* McD.) – 26-VIII-2002 1 and 8A-VII-2003 1.

Noctuidae, Noctuinae, Phlogophorini

1910. *Phlogophora periculosa* Gn. (9547. *Phlogophora periculosa* Gn.) (Brown Angle Shaed or Great Angle Shades) – 25B-VII-2008 1 and 25C-VII-2008 1.

Noctuidae, Noctuinae, Apameini

1912. *Apamea vultuosa* (Grt.) 9341. *Apamea vultuosa* (Grt.) (Narrow-bordered Quaker or Airy Quaker) – 4A-VII-2006 1.
1918. *Apamea sordens* (Hufn.) 9364. *Apamea finitima* Gn. (Bordered Apamea) – 23-V-2001 1, 9-VII-2002 1 and 30A-V-2006 1.
1924. *Apamea commoda* (Wlk.) (9359. *Apamea commoda* (Wlk.)) (Southern Quaker) – 9-VII-2002 2, 8A-VII-2003 1, 8B-VII-2003 1, 22-VI-2004 1, 29B-VI-2005 1, 24A-VI-2006 1, 24C-VI-2006 1, 4A-VII-2006 1, 25A-VII-2008 1 and 25B-VII-2008 1.
1927. *Apamea amputatrix* (Fitch) (9348. *Apamea amputatrix* (Fitch)) (Northern Quaker or Dusky Sallow) – 8-VIII-2002 1.
1930. *Apamea scoparia* Mik., Must. & Laf. (9365. *Agroperina lateritia* (Hufn.)) (Red-winged Quaker) – 9-VII-2002 1, 4A-VII-2006 1 and 4C-VII-2006 1.
1932. *Apamea inficita* (Wlk.) (9369. *Apamea inficita* (Wlk.)) (Inficita Quaker) – 26-VII-2002 2, 8-VIII-2002 2, 17-VIII-2002 1 JV, 17-VIII-2002 1 CBC, 30B-VII-2003 1 and 25A-VII-2008 1.
1933. *Apamea devastator* (Brace) (9382. *Crymodes devastator* (Brace)) (Destructive Quaker or Glassy Cutworm Moth) – 9-VII-2002 1, 1-IX-2002 1 JV, 11-IX-2002 12, 8-IX-2002 1 JV, 22-VI-2004 1, 19-VIII-2004 1 and 29A-VI-2005 1.
1936. *Apamea niveivenosa* (Grt.) (9374. *Apamea niveivenosa* (Grt.)) (White-veined Quaker) – 9-VII-2002 1 and 17-VIII-2002 1.
1938. *Resapamea passer* (Gn.) (9391. *Luperina passer* (Gn.)) (Dock Rustic) – 9-VII-2002 1, 25C-VII-2008 1 and 30B-VIII-2009 1.
1944. *Oligia mactata* (Gn.) (9419. *Oligia mactata* (Gn.)) (Prairie Quaker) – 1-IX-2002 JV, 25A-VIII-2006 1 and 29A-VIII-2007 1.
1945. *Oligia illocata* (Wlk.) (9420. *Oligia illocata* (Wlk.)) (Wandering Quaker) – 9-VII-2002 1, 1-IX-2002 1 JV, 11-IX-2002 1, 19-VIII-2004 2, 25A-VIII-2006 1, 25B-VIII-2006 1, 25B-VII-2008 1 and 30B-VIII-2009 1.
1946. *Neoligia subjuncta* (Sm.) (9412. *Oligia laevigata* (Sm.)) (Short-cloaked Quaker) – 25B-VII-2008 5 and 25C-VII-2008 1.
1950. *Photedes includens* (Wlk.) (9434. *Spartiniphaga includens* (Wlk.)) (Silver-C Borer) – 17-VIII-2002 1 CBC, 26-VIII-2002 1, 11-IX-2002 1 and 30A-VIII-2009 1.
1956. *Hypocoena rufostrigata* (Pack.) (9440. *Chortodes rufostrigata* (Pack.)) (Brown-streaked Rustic) – 26-VIII-2002 1 and 30A-VIII-2009 1.
1959. *Capsula subflava* (Grt.) (9450. *Archanara subflava* (Grt.)) (Subflava Sedge Borer) – 25A-VIII-2006 1.
1960. *Helotropha reniformis* (Grt.) (9453. *Celaena reniformis* (Grt.)) (Kidney-spotted Rustic) – 11-IX-2002 1, 22C-VIII-2003 1 and 25C-VII-2008 1.
1962. *Amphipoea americana* (Spey.) (9457. *Amphipoea americana* (Speyer)) (American Ear Moth) – 26-VIII-2002 2, 11-IX-2002 3, 22B-VIII-2003 1, 25A-VIII-2006 1, 30A-VIII-2009 1 and 30B-VIII-2009 1. Close to *Amphipoea interoceanica* (Sm.).
1963. *Papaipema harrisii* (Grt.) (9472. *Papaipema harrisii* (Grt.)) (Cow Parsnip Borer Moth) - 29A-VIII-2007 1.

1968. *Hydraecia perobliqua* Hamp. (9515. *Hydraecia perobliqua* Hamp.) (Oblique Rustic) – 26-VIII-2002 1 and 11-IX-2002 2.

Noctuidae, Noctuinae, Arzamini

1971. *Bellura obliqua* (Wlk.) (9525. *Bellura obliqua* (Wlk.)) (Cattail Borer Moth) – 23-V-2001 2, 28A-V-2004 2 (3 SR), 22A-VI-2004 2 (3 SR), 22B-VI-2004 1 SR and 30C-V-2006 1.

Noctuidae, Noctuinae, Xylenini

1976. *Xylena curvimacula* (Morr.) (9874. *Xylena curvimacula* (Morr.)) (Dot-and-Dash Swordgrass Moth) – 1-V-2002 2, 2-V-2003 1 JV, 14A-V-2003 1, 13A-IX-2003 1 and 9A-IX-2006 1.

1977. *Xylena thoracica* (Put.-Cram.) (9875. *Xylena thoracica* (Put.-Cram.)) (Gray Swordgrass Moth) – 1-V-2002 2.

1978. *Xylena cineritia* (Grt.) (9876. *Xylena cineritia* (Grt.)) (Western Swordgrass Moth) – 23-V-2001 1 and 1-V-2002 1.

1980. *Lithomoia germana* (Morr.) (9878. *Lithomoia germana* (Morr.)) (American Peasant) – 9C-IX-2006 1 and 29A-VIII-2007 2.

1981. *Homoglaea hircina* Morr. (9881. *Homoglaea hircina* Morr.) (Goat Sallow) – 1-V-2002 3.

1983. *Litholomia napaea* (Morr.) (9884. *Litholomia napaea* (Morr.)) (Dark Grey Peasant) – 23-V-2001 2, 1-V-2002 3, 11-IX-2002 1, 28-IX-2002 1 JV and 16-V-2003 1 JV.

1984. *Lithophane innominata* (Sm.) (9888. *Lithophane innominata* (Sm.)) (Nameless Pinion) – 23-V-2001 2 and 28-IX-2002 1 JV.

1990. *Lithophane unimoda* (Lint.) (9915. *Lithophane grotei* (Riley)) – 1-V-2002 1.

1995. *Eupsilia vinulenta* (Grt.) (9933. *Eupsilia vinulenta* (Grt.)) (Straight-toothed Sallow) – 24-VIII-2002 1 JV.

1996. *Eupsilia tristigmata* (Grt.) (9935. *Eupsilia tristigmata* (Grt.)) (Three-spotted Sallow) – 1-V-2002 1.

1999. *Eucirroedia pampina* (Gn.) (9952. *Eucirroedia pampina* (Gn.)) (Scalloped Sallow) – 24-VIII-2002 1 JV, 26-VIII-2002 1, 11-IX-2002 5, 22C-VIII-2003 1, 25A-VIII-2006 1 and 30A-VIII-2009 1.

2001. *Sunira bicolorago* (Gn.) (9957. *Sunira bicolorago* (Gn.)) (Bicolored Sallow) – 28-IX-2002 1 JV.

2002. *Sunira verberata* (Sm.) (9960. *Sunira verberata* (Sm.)) (Western Sallow) – 26-VIII-2002 1, 11-IX-2002 1 and 28-IX-2002 1 JV.

2003. *Anathix puta* (G. & R.) (9962. *Anathix puta* (G. & R.)) (Dusky or Puta Sallow) – 24-VIII-2002 1 JV, 26-VIII-2002 3, 6-IX-2002 1 JV, 11-IX-2002 2, 22B-VIII-2003 1, 19-VIII-2004 1, 9A-IX-2006 1 and 26C-VI-2007 1.

2005. *Xanthia tatago* Laf. & Mik. (9965. *Xanthia togata* (Esp.)) (Pink-barred Sallow) – 28-VIII-2002 1 JV, 25A-VIII-2006 1, 30A-VIII-2009 1, 30B-VIII-2009 1 and 30C-VIII-2009 1. True *togata* is strictly Palearctic.

2007. *Hillia iris* (Zett.) (9967. *Hillia iris* (Zett.)) (Iris Rover) – 25A-VIII-2006 1.

2008. *Brachylomia populi* (Stkr.) (9993. *Brachylomia populi* (Stkr.)) (Cloaked Peasant) – 28-IX-2002 1 JV and 9C-IX-2006 1.

2009. *Brachylomia algens* (Grt.) (9998. *Brachylomia algens* (Grt.)) (Willow Peasant) – 11-IX-2002 1, 19-VIII-2004 1, 9A-IX-2006 1 and 30B-VIII-2009 1.

2012. *Parastichtis suspecta* (Wlk.) (9431. *Parastichtis suspecta* (Wlk.)) (Mottled Quaker) – 8-VIII-2002 1, 25B-VII-2008 1, 30A-VIII-2009 1 and 30B-VIII-2009 1.

2019. *Energia decolor* (Wlk.) (9549. *Energia decolor* (Wlk.)) (Angle-striped Sallow) – 17-VIII-2002 1 JV, 17-VIII-2002 1 CBC, 24-VIII-2002 1 JV, 26-VIII-2002 2, 30-VIII-2002 1 JV, 11-IX-2002 1, 22B-VII-2003 1, 22C-VIII-2003 1, 13C-IX-2003 2, 19-VIII-2004 1, 25A-VIII-2006 1, 25B-VIII-2006 1, 9A-IX-2006 1, 9B-IX-2006 1, 29A-VIII-2007 1, 29B-VIII-2007 1, 30A-VIII-2009 1 and 30B-VIII-2009 1.
2020. *Energia infumata* (Grt.) (9550. *Energia infumata* (Grt.)) (Lesser Angle-striped Sallow) – 4A-VII-2006 1, 25B-VII-2008 1 and 25C-VII-2008 1.
2021. *Ipimorpha pleonectusa* Grt. (9555. *Ipimorpha pleonectusa* Grt.) (Even-lined Sallow) – 11-IX-2002 1, 9C-IX-2006 1 and 29A-VIII-2007 1.
2022. *Andropolia contacta* (Wlk.) (9564. *Andropolia contacta* (Wlk.)) – 8-VIII-2002 1.
2030. *Platypolia anceps* (Steph.) (9976. *Platypolia anceps* (Steph.)) (Rugged Rover) – 28-IX-2002 1 JV13A-IX-2003 1, 13C-IX-2003 1, 9B-IX-2006 1 and 9C-IX-2006 1.
2035. *Mniotype ducta* (Grt.) or 2036. *Mniotype tenera* (Sm.) (9987. *Mniotype ducta* (Grt.) (Alberta Rover) or 9988. *Mniotype tenera* (Sm.) (Miniota Rover) – 30A-V-2006 1 and 25A-VIII-2006 1.
2037. *Sutyna privata* (Wlk.) (9990. *Sutyna profunda* (Sm.)) (Profound Sallow) – 11-IX-2002 1 and 25A-VIII-2006 1.

Noctuidae, Noctuinae, Orthosiini

2042. *Stretchia plusiaeformis* Hy. Edw. (10471. *Stretchia plusiaeformis* Hy. Edw.) (Grey Spectacles) – 1-V-2002 2, 17-V-2003 1 JV and 11B-V-2007 1.
2044. *Orthosia revicta* (Morr.) (10490. *Orthosia revicta* (Morr.)) (Subdued Quaker) – 23-V-2001 1, 1-V-2002 5, 11A-V-2007 3 and 11-C-V-2007 1.
2045. *Orthosia segregata* (Sm.) (10493. *Orthosia segregata* (Sm.)) (Segregate Penman) – 23-V-2001 1, 3-VI-2002 1, 14A-V-2003 1, 24-V-2003 1 JV, 11B-V-2007 1 and 11C-V-2007 1.
Orthosia segregata f. *negussa* Sm. – 23-V-2001 1, 3-V-2003 1 JV and 14A-V-2003 1.
2046. *Orthosia hibisci* (Gn.) (10495. *Orthosia hibisci* (Gn.)) (Variable Penman) – 1-V-2002 4, 27-V-2004 2, 11A-V-2007 1 and 11C-V-2007 2.
2049. *Egira dolosa* (Grt.) (10513. *Egira dolosa* (Grt.)) (Greater Black-letter Dart) – 14A-V-2003 2.

Noctuidae, Noctuinae, Tholerini

2053. *Nephelodes minians* (Gn.) (10524. *Nephelodes minians* Gn.) (Shaded Umber or Brown Cutworm Moth) – 24-VIII-2002 1 JV, 26-VIII-2002 13-VIII-2002 1 JV, 1-IX-2002 1 JV, 22B-VIII-2003 1, 19-VIII-2004 1, 25A-VIII-2006 1, 25B-VIII-2006 1, 25C-VIII-2006 1 and 29C-VIII-2007 1.

Noctuidae, Noctuinae, Hadenini

2058. *Anarta trifolii* (Hufn.) (10223. *Discestra trifolii* (Hufn.)) (Clover Cutworm, The Nutmeg) – 27-V-2004 1.
2059. *Anarta mutata* (Dod) (10224. *Discestra mutata* (Dod)) (The Changeling) – 17C-VI-2003 1.
2064. *Anarta farnhami* (Grt.) (10232. *Discestra farnhami* (Grt.)) (Farnham's Discestra) – 23-V-2001 3, 12-VI-2002 3, 12-VI-2003 3, 28B-V-2004 2 (5 SR) and 30C-V-2006 1.
2074. *Polia nimbosa* (Gn.) (10275. *Polia nimbosa* (Gn.)) (Stormy Arches) – 22-VI-2004 1 and 29B-VI-2005 1.
2075. *Polia imbrifera* (Gn.) (10276. *Polia imbrifera* (Gn.)) (Cloudy Arches) – 29A-VI-2005 1, 4A-VII-2006 1 and 4B-VII-2006 1.

2079. *Polia purpurissata* (Grt.) (10280. *Polia purpurissata* (Grt.)) (Purple Arches) – 9-VII-2002 1, 8-VIII-2002 3, 17-VIII-2002 1 CBC, 26-VIII-2002 1, 8A-VII-2003 1, 30B-VII-2003 1, 30C-VII-2003 1, 19-VIII-2004 1, 25A-VII-2008 1, 25B-VII-2008 1 and 25C-VII-2008 1.
2082. *Lacanobia atlantica* (Grt.) (10297. *Lacanobia atlantica* (Grt.)) (Atlantic Arches) – 23-V-2001 2 and 9-VII-2002 2.
2083. *Lacanobia radix* (Wlk.) (10298. *Lacanobia radix* (Wlk.)) (Garden Arches) – 12-VI-2002 1, 22-VI-2004 2, 30B-V-2006 1 and 30C-V-2006 1.
2088. *Melanchra assimilis* (Morr.) (10295. *Melanchra assimilis* (Morr.)) (Black Arches) – 29B-VI-2005 1 and 4C-VII-2006 1.
2094. *Trichordestra dodii* (Sm.) (10305. *Trichordestra dodii* (Sm.)) – 9-VII-2002 1.
2095. *Trichordestra lilacina* (Harv.) (10307. *Trichordestra lilacina* (Harv.)) (Lilac Arches) – 4A-VII-2006 1.
2096. *Trichordestra liquida* (Grt.) (10308. *Trichordestra liquida* (Grt.)) (Liquid Arches) – 12-VI-2002 1.
2099. *Papestra cristifera* (Wlk.) (10312. *Papestra cristifera* (Wlk.)) – prob. 17C-VI-2003 1.
2102. *Mamestra configurata* (Wlk.) (10271. *Mamestra configurata* (Wlk.)) (Bertha Armyworm) – 25C-VII-2008 1.
2107. *Sideridis rosea* (Harv.) (10265. *Sideridis rosea* (Harv.)) (Rosy Penman, The Rosywing) – 23-V-2001 1, 12-VI-2002 1 and 27-V-2004 1.

Noctuidae, Noctuinae, Leucaniini

2112. *Faronta diffusa* (Wlk.) (10431. *Faronta diffusa* (Wlk.)) (Cloudy Wainscot or Wheat-head Armyworm Moth) – 23-V-2001 2, 9-VII-2002 1, 17B-VI-2003 1 and 30C-V-2006 1.
2114. *Mythimna oxygala* (Grt.) (10436. *Aletia oxygala* (Grt.)) (Lesser Wainscot) – 8-VIII-2002 2, 26-VIII-2002 1, 19-VIII-2004 1, 4B-VII-2006 1, 25A-VII-2008 1 and 25C-VII-2008 1.
2118. *Leucania multilinea* Wlk. (10446. *Leucania multilinea* Wlk.) – 8-VIII-2002 1 and 4B-VII-2006 1.
2119. *Leucania commoides* Gn. (10447. *Leucania commoides* Gn.) – 30B-VII-2003 1, 4A-VII-2006 1, 4C-VII-2006 1, 25B-VII-2008 1 and 25C-VII-2008 1.
2120. *Leucania insueta* Gn. (10449. *Leucania insueta* Gn.) (Heterodox Wainscot) – 9-VII-2002 1 and 22-VI-2004 1.

Noctuidae, Noctuinae, Eriopygini

2142. *Lacinipolia meditata* (Grt.) (10368. *Lacinipolia meditata* (Grt.)) (The Thinker or Pink-backed Cutworm Moth) – 8-VIII-2002 2, 30B-VII-2003 1, 30C-VII-2003 1, 25A-VII-2008 2, 25B-VII-2008 1 and 25C-VII-2008 1.
2143. *Lacinipolia lustralis* (Grt.) (10370. *Lacinipolia lustralis* (Grt.)) (Lustrous Arches) – 8B-VII-2003 1, 22-VI-2004 2, 29B-VI-2005 1 and 4A-VII-2006 1.
2145. *Lacinipolia anguina* (Grt.) (10372. *Lacinipolia anguina* (Grt.)) (Snaky Arches) – 27-V-2004 1 and 30C-V-2006 2.
2150. *Lacinipolia renigera* (Steph.) (10397. *Lacinipolia renigera* (Steph.)) (Kidney-spotted Arches or Bristly Cutworm Moth) – 9-VII-2002 1, 8-VIII-2002 1, 30B-VII-2003 1, 4A-VII-2006 1, 4C-VII-2006 1, 25A-VII-2008 1, 25B-VII-2008 1, 25C-VII-2008 1 and 30A-VIII-2009 1.
2152. *Lacinipolia lorea* (Gn.) (10405. *Lacinipolia lorea* (Gn.)) (Bridled Arches) – 9-VII-2002 1, 8-VIII-2002 1, 8A-VII-2003 1 and 4A-VII-2006 1.

2153. *Lacinipolia olivacea* (Morr.) (10406. *Lacinipolia olivacea* (Morr.)) (Olive Arches) – 8-VIII-2002 1, 11-IX-2002 1 and 25C-VII-2008 1.
2157. *Anhimela contrahens* (Wlk.) (10530. *Anhimela contrahens* (Wlk.)) (Brown Stylus) – 19-VIII-2004 1.
2162. *Protorthodes oviduca* (Gn.) (10563. *Protorthodes oviduca* (Gn.)) (Ruddy Quaker) – 23-V-2001 3, 3-VI-2002 1, 12-VI-2002 2, 17A-VI-2003 1, 28A-V-2004 7 SR, 22A-VI-2004 1 (2 SR), 22B-VI-2004 2 SR and 30A-V-2006 1.
2165. *Orthodes goodelli* (Grt.) (10289. *Polia goodelli* (Grt.)) (Goodell's Arches) – 30B-V-2006 1.
2166. *Orthodes obscura* (Sm.) (10290. *Polia obscura* (Sm.)) (Obscure Arches) – 23-V-2002 1 and 30B-V-2006 1.
2168. "*Polia*" *detracta* Wlk.) (10288. *Polia detracta* (Wlk.)) (Disparaged Arches) – 3-VI-2002 1, 9-VII-2002 1, 22-VI-2004 2 and 29A-VI-2005 3.

Noctuidae, Noctuinae, Noctuini

2174. *Anicla tepperi* (Sm.) (10910. *Euagrotis tepperi* (Sm.) ()) (Black-girdled Dart) – 9-VII-2002 1, 11-IX-2002 1, 22B-VIII-2003 1, 22-VI-2004 1 and 4A-VII-2006 1.
2176. *Actebia balanitis* (Grt.) (10923. *Protexarnis squalida* (Grt.)) (Acorn or Bracketed Dart) – 9-VII-2002 1 and 22B-VIII-2003 1.
2188. *Euxoa adumbrata* (Ev.) (Not in Hodges) (Sordid Dart) – 25B-VII-2008 1 and 25C-VII-2008 1.
2189. *Euxoa auxiliaris* (Grt.) (10731. *Chorizagrotis auxiliaris* (Grt.)) (Auxiliary Dart) – 8-VIII-2002 2, 26-VIII-2002 2, 11-IX-2002 1, 13A-IX-2003 1, 22-VI-2004 1, 29A-VIII-2007 1 and 29B-VIII-2007 1. The life history, appearance, food hosts and damage are described and illustrated in Philip (no date).
2191. *Euxoa mimallonis* (Grt.) (10738. *Euxoa mimallonis* (Grt.)) (Ruddy Dart) – 8B-VII-2003 1.
2194. *Euxoa messoria* (Harr.) (10705. *Euxoa messoria* (Harr.)) (Reaper Dart, Dark-sided Cutworm) – 22C-VIII-2003 1.
2195. *Euxoa divergens* (Wlk.) (10702. *Euxoa divergens* (Wlk.)) (Divergent Dart) – 9-VII-2002 2, 8A-VII-2003 1, 8B-VII-2003 1, 22-VI-2004 1 and 25C-VII-2009 1.
2204. *Euxoa tristicula* (Morr.) (10723. *Euxoa tristicula* (Morr.)) (Three-marked Dart) – 9-VII-2002 2, 8A-VII-2003 1, 30B-VII-2003 1, 22-VI-2004 2, 30C-V-2006 1, 4A-VII-2006 1, 25B-VII-2008 1 and 25C-VII-2008 1.
2214. *Euxoa setonia* McD. (10794. *Euxoa setonia* McD.) (Seton Lake Dart) – 19-VIII-2004 1.
2215. *Euxoa declarata* (Wlk.) (10755. *Euxoa declarata* (Wlk.)) (Clear Dart) – 11-IX-2002 2 and 22B-VIII-2003 1.
2216. *Euxoa campestris* (Grt.) (10756. *Euxoa campestris* (Grt.)) (Flat Dart) – 17-VIII-2002 1 JV, 26-VIII-2002 1 and 25C-VII-2008 3.
2220. *Euxoa tessellata* (Harr.) (10805. *Euxoa tessellata* (Harr.)) (Tessellate Dart) – 11-IX-2002 1.
2222. *Euxoa albipennis* (Grt.) (10807. *Euxoa albipennis* (Grt.)) (White-winged Dart) – 11-IX-2002 1.
2224. *Euxoa comosa* (Morr.) (10780. *Euxoa comosa* (Morr.)) (Hairy Dart) – 26-VIII-2002 1 and 22B-VIII-2003 1.
2228. *Euxoa ochrogaster* (Gn.) (10801. *Euxoa ochrogaster* (Gn.)) (Red-backed Cutworm Moth) – 26-VIII-2001 1, 8-VIII-2002 1, 17-VIII-2002 1 CBC, 21-VIII-2002 1, 26-VIII-2002 1, 11-IX-2002 1, 30C-VII-2003 1, 13C-IX-2003 1, 19-VIII-2004 1, 25C-VII-2008 1, 30A-VIII-2009 1 and 30B-VIII-2009 1.
2233. *Euxoa basalis* (Grt.) (10798. *Euxoa basalis* (Grt.)) (Pale-based Dart) – 8-VIII-2002 2.
2239. *Euxoa servitus* (Sm.) (10854. *Euxoa servita* (Sm.)) (Servita Dart) – 30B-VII-2003 1.

2239. *Euxoa servitus* (Sm.) or 2240. *Euxoa auripennis* Laf. (10854. *Euxoa servita* (Sm.) (Servita Dart) or 10854. *Euxoa auripennis* Lafontaine)– 11-IX-2002 1 JV.
2271. *Euxoa ridingsiana* (Grt.) (10861. *Euxoa ridingsiana* (Grt.)) (Riding's Dart) – 8-VIII-2002 2, 26-VIII-2002 2, 30C-VII-2003 1 and 30B-VIII-2009 1.
2274. *Feltia jaculifera* (Gn.) (10670. *Feltia jaculifera* (Gn.)) (Dingy Cutworm Moth) – 8-VIII-2002 1, 26-VIII-2002 1, 19-VIII-2004 1, 25A-VII-2008 1, 25B-VII-2008 1 and 25C-VII-2008 1.
2275. *Feltia herilis* (Grt.) (10676. *Feltia herilis* (Grt.)) (Master's Dart) – 26-VIII-2002 1, 11-IX-2002 2 and 30B-VII-2003 1.
2276. *Agrotis vetusta* Wlk. (10641. *Agrotis vetusta* Wlk.) (Old Man Dart) – 19-VIII-2004 1.
2280. *Agrotis orthogonia* Morr. (10645. *Agrotis orthogonia* Morr.) – 22B-VIII-2003 2 and 22C-VIII-2003 1.
2282. *Agrotis venerabilis* Wlk. (10651. *Agrotis venerabilis* Wlk.) (Venerable Dart) – 10-VI-2002 1 JV, 12-VI-2002 1, 26-VIII-2002 2, 11-IX-2002 1, 22C-VIII-2003 1, 25B-VIII-2006 1, 25C-VIII-2006 1, 29A-VIII-2007 2, 30A-VIII-2009 1, 30B-VIII-2009 1 and 30C-VIII-2009 1.
2283. *Agrotis vancooverensis* Grt. (10652. *Agrotis vancooverensis* Grt.) (Vancouver Dart) – 23-V-2001 1, 12-VI-2002 1, 9-VII-2002 1, 22B-VI-2004 2 4SR, 30A-V-2006 1 and 30B-V-2006 1.
2284. *Agrotis stigmata* Morr. (10658. *Agrotis stigmata* Morr.) – 23-V-2001 1.
2286. *Agrotis obliqua* (Sm.) (10660. *Agrotis obliqua* (Sm.)) (Oblique Dart) – 23-V-2002 1, 12-VI-2002 1, 9-VII-2002 1 and 22B-VI-2004 2 (4 SR).
2289. *Ochropleura implecta* Laf. (10891. *Ochropleura plecta* (L.) (Flame-shouldered Dart) – 9-VII-2002 1.
2292. *Diarsia rubifera* (Grt.) (10917. *Diarsia rubifera* (Grt.)) (Rubifera Dart) – 8-VIII-2002 1, 11-IX-2002 2 and 25B-VII-2008 1.
2294. *Cerastis salicarum* (Wlk.) (10996. *Cerastis salicarum* (Wlk.)) (Willow Dart) - 11B-V-2007 1.
2295. *Paradiarsia littoralis* (Pack.) (10992. *Paradiarsia littoralis* (Pack.)) (Labrador Dart) – 9-VII-2002 2, 8A-VII-2003 1, 22A-VI-2004 2 (4 SR), 22B-VI-2004 8 SR and 29A-VI-2005 1, 4A-VII-2006 1, 4B-VII-2006 1 and 4C-VII-2006 1.
2300. *Noctua pronuba* (L.) (10035. *Noctua pronuba* (B. & McD.)) (Large Yellow Underwing) – 25B-VII-2008 1 and 30B-VIII-2009 1.
2301. *Cryptocala acadensis* (Bethune) (11012. *Cryptocala acadensis* (Bethune)) (Catocaline Dart) – 4A-VII-2006 1 and 25C-VII-2008 2.
2302. *Spaelotis clandestina* (Harr.) (10926. *Spaelotis clandestina* (Harr.)) (Clandestine Dart) – 9-VII-2002 1, 8B-VII-2003 2 and 4A-VII-2006 1.
2304. *Eurois occulta* (L.) (10929. *Eurois occulta* (L.)) (Great Grey Dart) – 11-IX-2002 1, 9B-IX-2006 1, 29A-VIII-2007 1, 25C-VII-2008 1, 30A-VIII-2009 1 and 30B-VIII-2009 1.
2305. *Eurois astricta* (Morr.) (10930. *Eurois astricta* Morr.) (Great Brown Dart) – 9-VII-2002 2, 8-VIII-2002 1, 30-VIII-2002 1 JV, 30B-VII-2003 1, 4A-VII-2006 2, 4B-VII-2006 1, 4C-VII-2006 1, 25A-VII-2008 1, 25B-VII-2008 1 and 25C-VII-2008 1.
2307. *Graphiphora augur* (F.) (10928. *Graphiphora augur* (Grt.)) (Soothsayer Dart) – 29A-VI-2005 1, 25B-VII-2008 2 and 25C-VII-2008 1.
2308. *Anaplectoides prasina* (D. & S.) (11000. *Anaplectoides prasina* (D. & S.)) (Green-winged Dart) – 25B-VII-2008 1.
2309. *Anaplectoides pressus* (Grt.) (11001. *Anaplectoides pressus* (Grt.)) – 9-VII-2002 1 and 25B-VII-2008 1.
2313. *Xestia smithii* (Snell.) (10944. *Xestia smithii* (Snell)) (Smith's or Spotted Clay Dart) – 8-VIII-2002 3, 17-VIII-2002 1 JV, 26-VIII-2002 3, 30C-VII-2003 2, 19-VIII-2004 1, 25A-VIII-2006 1, 25A-VII-2008 1, 25B-VII-2008 1 and 25C-VII-2008 1.

2314. *Xestia normaniana* (Grt.) (10943. *Xestia normaniana* (Grt.)) (Norman's Dart) – 25B-VII-2008 1.
2315. *Xestia oblata* (Morr.) (10947. *Xestia oblata* (Morr.)) (Rosy or Ruby Dart) – 9-VII-2002 1.
2322. *Xestia c-nigrum* (L.) (10942. *Xestia c-nigrum* (Franc.)) (Black-letter Dart) – 9A-IX-2006 1, 25B-VII-2008 1 and 25C-VII-2008 1 and 30B-VIII-2009 1.
2335. *Agnorisma bugrai* (Koçak) (10954. *Xestia collaris* (G. & R.)) (Collared Dart) – 8-VIII-2002 1, 17-VIII-2002 1 CBC, 26-VIII-2002 4, 11-IX-2002 2, 22B-VIII-2003 1, 22C-VIII-2003 1, 19-VIII-2004 2, 25A-VIII-2006 1, 9A-IX-2006 1, 29B-VIII-2007 1, 29C-VIII-2007 1, 30A-VIII-2009 1 and 30C-VIII-2009 1.
2337. *Pseudohermonassa tenuicula* (Morr.) (10951. *Pseudohermonassa tenuicula* (Morr.)) (Hairpin Dart) – 25B-VII-2008 1.
2344. *Protolampra rufipectus* (Morr.) (11004. *Protolampra rufipectus* (Morr.)) (Red-breasted Dart) – 8-VIII-2002 3 and 26-VIII-2002 1, 25B-VII-2008 2, 25C-VII-2008 1 and 30A-VIII-2009 1.
2355. *Abagrotis hermina* Laf. (Not in Hodges) – 8-VIII-2002 1, 26-VIII-2002 3, 11-IX-2002 1 and 19-VIII-2004 1.

DISCUSSION

An analysis of the data from the present study of the moths encountered in twelve major study areas in south-central Alberta, reveals that the present area (BK) is most similar (56.38%) to the Buffalo Lake Conservation Area (BL), (56.34%) to AH and (52.41%) to the Lowden Springs site (LS). It was least similar (32.54%) to the aspen woods of the Lohr Farm site (LF). More habitats in Big Knife Provincial Park are similar to those of BL, and thus many similar food plants are present. Conversely, LF has far fewer habitats, and thus fewer food plants, than BK.

SUMMARY

Five hundred and fifty-two species of moths and eight skippers and butterflies are reported for Big Knife Provincial Park. If all species in the undetermined categories were named, the total would be over 600. The actual total of species that might be expected would be around 700. To put things into perspective, Pohl et al (2010) document 2367 species of Lepidoptera for Alberta. The present report is still “a work in progress”. Attempts should be made in the future to sample new habitats, for example the *Opuntia fragilis* community beside the river near the western boundary of the Park.

It was especially gratifying that one of the species collected in 2002, *Semioscopis merricella*, turned out to be new for Alberta (Pohl et al. 2005) while *Phaneta ornatula*, collected in 2008, also turned out to be new for the province. *Sparganothis flavibasana*, collected in 2009, was also new for the province. It is exciting that Dr. Don Wright feels that two species of *Eucosma* collected in the Park may be new to science. A number of species, such as *Sphinx luscitiosa*, *Sphinx drupiferarum* and *Leptostales ferruminaria* have been seldom encountered in the province

Of the 13 major areas involved in the present study, seventeen species of moths were found only BK – *Caloptilia invariabilis*, *Battaristis concinuseella*, *Aethes promptana*, *Cochylys nana*, *Argyrotaenia tabulana*, *Sparganothis flavibasana*, *Olethreutes metallicana*, *Phaneta ornatula*, *Paraplapytilia albiciliata*, *Emmelina monodactyla*, *Dioryctria pseudotsugella*, *Pediasia*

truncatellus, *Loxostege lepidalis*, *Eupithecia albicapitata*, *Cucullia postera*, *Brachionycha borealis* and *Lithophane unimoda*.

ACKNOWLEDGEMENTS

Sincere thanks are extended to Gary Anweiler for the verification or identification of numerous Noctuids, and to Greg Pohl for his assistance in the identification of various micromoths. Thanks are also extended to Chris Schmidt for verifying the Arctiids and Geometrids, Dr. George Balogh for identifying the *Eupithecias*, Dr. J.-F. Landry for identifying some Coleophorids, and Doug Macaulay for identifying the Pterophorids. Amanda Roe identified the specimens of *Dioryctria*. Jason Dombroskie provided help with some of the Tortricidae.

Even though others have helped, I personally take responsibility for the identification of the species mentioned in this report. Felix Sperling and Danny Shpeley facilitated the study of specimens in the Bowman Collection of the Strickland Museum, and Greg Pohl did the same for the Northern Forest Research Centre Entomology Collection. Ernest Mengersen is thanked for identifying several species and for allowing access to the Entomology Collection at Olds College. Wayne Nordstrom and Gerry Bennett are thanked for their help in obtaining Letters of Authority to allow the collecting of Lepidoptera in Big Knife Provincial Park. It was always a pleasure to be associated with Seasonal Conservation Officers Jodi Vincent, Abigail Knight, Amanda Rode, Michael Merrills and April Nelson.

LITERATURE CITED

- Adamski, David. 2000. A new species of Glyphidocera from south-central Colorado (Lepidoptera: Gelechioidea: Glyphidoceridae). *Fabreries* 25(4): 69-78.
- Bird, C. D. 1993. Big Knife Provincial Park plant list. Report submitted to Alberta Parks and Recreation.
- Bird, C. D. 2002. Moths of Big Knife Provincial Park, a first report. Report prepared for Alberta Parks and Protected Areas. 7 pp.
- Bird, C. D. 2003. Moths of Big Knife Provincial Park, a second report. Report prepared for Alberta Parks and Protected Areas. 16 pp.
- Bird, C. D. 2004. Moths, butterflies and other insects collected by Jodi Vincent in Big Knife Provincial Park in 2002 and 2003. Report prepared for Alberta Parks and Protected Areas. 2 pp.
- Bird, C. D. 2004. Moths of Big Knife Provincial Park, a third report. Report prepared for Alberta Parks and Protected Areas. 21 pp.
- Bird, C. D. 2005. Moths of Big Knife Provincial Park 2001-2004. Report prepared for Alberta Parks and Protected Areas. 24 pp.
- Bird, C. D. 2006. Moths of Big Knife Provincial Park 2001-2005. Report prepared for Alberta Parks and Protected Areas. 25 pp.
- Bird, C. D. 2007. Moths of Big Knife Provincial Park 2001-2006. Report prepared for Alberta Parks and Protected Areas. 31 pp.
- Bird, C. D. 2008. Moths of Big Knife Provincial Park 2001-2007. Report prepared for Alberta Parks and Protected Areas. 33 pp.
- Bird, C. D. 2009. Moths of Big Knife Provincial Park 2001-2008. Report prepared for Alberta Parks and Protected Areas. 35 pp.
- Bird, C. D. 2010. Moths of Big Knife Provincial Park 2001-2009. Report prepared for Alberta Parks and Protected Areas. 37 pp.
- Bowman, Kenneth 1951. An annotated list of the Lepidoptera of Alberta. *Can. J. Zoology* 29: 121-165.

- Ebel, R., D. Poll, & B. Finkelman. 1973. An ecological survey of Big Knife Provincial Park. Prov. Parks Planning, Dept. Lands & Forests, Gov. Alberta. 36 pp.
- Hodges, R. W. (ed.). 1983. Check List of the Lepidoptera of America North of Mexico. E.W. Classey Ltd. & The Wedge Entomological Research Foundation.
- Karpuk, Ed & Marge Meijer. December 1999. Big Knife Provincial Park Biophysical Inventory. Environmental Service, Resource Data Division, Natural Resources Service, Parkland Region, Alberta Environment. 112 pp + maps.
- Lafontaine, J. D. & B.C. Schmidt. 2010. Annotated check list of the Noctuoidea (Insecta, Lepidoptera) of North America north of Mexico. ZooKeys 40: 1-239.
- Landry, B. & J.-F. Landry. 2004. The genus *Alucita* in North America, with description of two new species (Lepidoptera: Alucitidae). The Canadian Entomologist 136: 553-579.
- Lohr, Lloyd. 1993. Big Knife Provincial Park bird & mammal lists. Report submitted to Alberta Parks and Recreation.
- McIsaac, P. & C. Macdonald. 1994. Big Knife Provincial Park Plants. Watchable Wildlife Checklist Series, Alberta Parks and Recreation. 14 pp.
- McIsaac, P. & C. Macdonald. 1994. Big Knife Provincial Park Birds. Watchable Wildlife Checklist Series, Alberta Parks and Recreation.
- McIsaac, P. & C. Macdonald. 1994. Big Knife Provincial Park Fish, Amphibians, Reptiles & Mammals. Watchable Wildlife Checklist Series, Alberta Parks and Recreation.
- Pohl, G., C. D. Bird, J-F. Landry & G. Anweiler. 2005. New records of Microlepidoptera in Alberta. J. Lepidopterist's Soc. 59(2): 61-82.
- Pohl, G. R., G. G. Anweiler, B. C. Schmidt and N. G. Kondla. 2010. An annotated list of the Lepidoptera of Alberta, Canada. ZooKeys 38: 1-549.
- Pohl, G. R., J. J. Dombroskie, J.-F. Landry, C. D. Bird and V. Nazari. 2011. Errata and first update to the 2010 checklist of the Lepidoptera of Alberta. ALG Newsletter Spring 2011, pp. 10-16.
- Schintlmeister, A. 1983 [1984]. Zum status einiger fernöstlicher taxa. Notodontiden-Studien I. Zeitschrift der Arbeitsgemeinschaft Österreichischer Entomologen 35: 106-111.
- Sopow, S.L., R. G. Bennett, J-F. Landry & B. Landry. 1996. Identification of the "grey" *Dioryctria* species of British Columbia (Lepidoptera, Pyralidae). J. Entomol. Soc. Brit. Columbia 93: 75-91.
- Vincent, Jodi. 2002. Moths, butterflies and other insects collected in Big Knife Provincial Park in the 2002 season. Report submitted to Alberta Parks and Protected Areas.

USEFUL ONLINE INFORMATION SOURCES ON MOTHS

Information on, and illustrations of, many of our Alberta moths can be found at the Entomology Collection Search site of the E.H. Strickland Entomological Museum of the Department of Biological Sciences at the University of Alberta:

<http://www.entomology.ualberta.ca/>.

Illustrations of Alberta macromoths can be found at a site put together by D. Lafontaine and J. Troubridge called "The Moths of Canada":

http://www.cbif.gc.ca/spp_pages/misc_moths/phps/mothindex_e.php.

Illustrations on many of the western American macromoths can also be found on a site put together by The Moth Photographers Group:

<http://www.origins.tv/MothPhotographersGroup/WestPlates.htm>.

D. Lynn Scott has a web site with natural photos of over 400 species of moths that she has found in Ottawa, Ontario (<http://acleris.com/dls/mothindex.html>). As many of the species also occur in Alberta, these images can be quite helpful

USEFUL BOOKS ON MOTHS

- Covell, Charles V., Jr. 1984. A Field guide to Moths; Eastern North America. Houghton, Mifflin Co., Boston, New York.
- Handfield, Louis. 1999. Le Guide des Papillons du Quebec. Vol. 1. Broquet, Boucherville, QC.
- Handfield, Louis. 2011. Le Guide des Papillons du Quebec. Vol. 1. Partie 1 & 2, 1352 pp. plus 166 plates.
- Ives, W.G.H. & H.R. Wong. 1988. Tree and Shrub Insects of the Prairie Provinces. Can. Forestry Serv., Northern For. Centre, Inf. Rept. NOR-X-292.
- Pohl, G. R., G. G. Anweiler, B. C. Schmidt and N. G. Kondla. 2010. An annotated list of the Lepidoptera of Alberta, Canada. ZooKeys 38: 1-549.
- Powell, J. A. & P. A. Opler. 2009. Moths of Western North America. Univ. California Press. 369 pp.

APPENDIX

Collection dates, sites and other details

- 23 May 2001 – 1 UV trap set up in mixed woods, another in aspen/silverwillow, 52.49, 112.22, 675 m.
- 30 September 2001 – diurnal, Buffalo Lake Naturalist's hike, 52.49, 112.22, 675 m.
- 1 May 2002 – UV and MV, 52.49, 112.22, 675 m.
- 3 June 2002 – UV and MV, 52.49, 112.22, 675 m.
- 12 June 2002 – UV, 52.49, 112.22, 675 m.
- 9 July 2002 – UV, 52.49, 112.22, 675 m.
- 8 August 2002 – UV, 52.49, 112.22, 675 m.
- 11 September 2002 – UV and MV, 52.49, 112.22, 675 m.
- 15 September 2002 – Diurnal, Buffalo Lake Naturalist's hike, 52.49, 112.22, 675 m.
- 14A May 2003 – UV and MV, mixed woods, campground, 52.494, 112.222, 675 m.
- 14B May 2003 – UV, meadow, near boat launch, 52.492, 112.211, 660 m.
- 17A June 2003 – UV, meadow with aspen/buckbrush nearby, close to start of upper hiking trail, 52.486, 112.206, 683 m.
- 17B June 2003 – UV, mixed grass clearing surrounded by aspen/chokecherry/saskatoon, half way up hill from start of upper hiking trail, 52.486, 112.206, 692 m.
- 17C June 2003 – MV, aspen/chokecherry/saskatoon, campground, 52.493, 112.220, 686 m.
- 8A July 2003 – UV, meadow with aspen/buckbrush nearby, close to start of upper hiking trail, 52.486, 112.206, 683 m.
- 8B July 2003 – UV, mixed grass clearing surrounded by aspen/chokecherry/saskatoon, half way up hill from start of upper hiking trail, 52.486, 112.206, 692 m.
- 30A July 2003 – MV, aspen/chokecherry/saskatoon, campground, 52.493, 112.220, 686 m.
- 30B July 2003 – UV, meadow with aspen/buckbrush nearby, close to start of upper hiking trail, 52.486, 112.206, 683 m.

- 30C July 2003 – UV, meadow, near boat launch, 52.492, 112.211, 660 m.
- 22A August 2003 – MV, aspen/chokecherry/saskatoon, campground, 52.493, 112.220, 686 m.
- 22B August 2003 – UV, meadow with aspen/buckbrush nearby, close to start of upper hiking trail, 52.486, 112.206, 683 m.
- 22C August 2003 – UV, meadow, near boat launch, 52.492, 112.211, 660 m.
- 13A September 2003 – UV, meadow with aspen/buckbrush nearby, close to start of upper hiking trail, 52.486, 112.206, 683 m.
- 13B September 2003 – UV, meadow, near boat launch, 52.492, 112.211, 660 m.
- 13C September 2003 – MV, mixed woods, campground, 52.494, 112.222, 675 m.
- 28A May 2004 – UV, aspen/buckbrush/silverwillow, trail to woodpile, 52.492, 112.213, 681 m.
- 28B May 2004 – UV, aspen/buckbrush/fescue prairie, upper hiking trail, 52.487, 112.205, 698 m.
- 28C May 2004 – MV, aspen/white spruce/chokecherry/pin cherry, east of Park Office, 52.488, 112.216, 711 m.
- 22A June 2004 – UV, aspen/buckbrush/fescue prairie, upper hiking trail, 52.487, 112.205, 698 m.
- 22B June 2004 – UV, aspen/buckbrush/silverwillow, trail to woodpile, 52.492, 112.213, 681 m.
- 22D June 2004 – Diurnal, Lowlands Trail, 52.49, 112.23, 680 m.
- 19A August 2004 – UV, aspen/buckbrush/fescue prairie, base of upper hiking trail, 52.487, 112.205, 698 m.
- 19B August 2004 – UV, *Picea glauca*/*Populus tremuloides*, maintenance area west of Park Office, 52.487, 112.217, 708 m.
- 29A June 2005 – UV, *Picea glauca*/*Populus tremuloides*, maintenance area west of Park Office, 52.487, 112.217, 708 m.
- 29B June 2005 – UV, aspen/buckbrush/fescue prairie, base of upper hiking trail, 52.487, 112.205, 698 m.
- 30A May 2006 – UV, aspen/buckbrush/silverwillow, trail to woodpile, 52.492, 112.213, 681 m.
- 30B May 2006 – UV, *Picea glauca*/*Populus tremuloides*, maintenance area west of Park Office, 52.487, 112.217, 708 m.
- 30C May 2006 – UV, meadow with aspen/buckbrush/silverwillow/chokecherry, 1 km E of Park Office, 52.487, 112.208, 712 m.
- 4A July 2006 – UV, aspen/buckbrush/silverwillow, trail to woodpile, 52.492, 112.213, 681 m.
- 4B July 2006 – UV, *Picea glauca*/*Populus tremuloides*, maintenance area west of Park Office, 52.487, 112.217, 708 m.
- 4C July 2006 – UV, aspen/buckbrush/fescue prairie, base of upper hiking trail, 52.487, 112.205, 698 m.
- 25A August 2006 – UV, aspen/buckbrush/silverwillow, trail to woodpile, 52.492, 112.213, 681 m.
- 25B August 2006 – UV, *Picea glauca*/*Populus tremuloides*, maintenance area west of Park Office, 52.487, 112.217, 708 m.
- 25C August 2006 – UV, meadow with aspen/buckbrush/silverwillow/chokecherry, 1 km E of Park Office, 52.487, 112.208, 712 m.
- 9A September 2006 – UV, aspen/buckbrush/silverwillow, trail to woodpile, 52.492, 112.213, 681 m.
- 9B September 2006 – UV, *Picea glauca*/*Populus tremuloides*, maintenance area west of Park Office, 52.487, 112.217, 708 m.
- 9C September 2006 – UV, meadow with aspen/buckbrush/silverwillow/chokecherry, 1 km E of Park Office, 52.487, 112.208, 712 m.
- 11A May 2007 – UV, meadow near chokecherry and aspen, near boat launch, 52.492, 112.211, 660 m.

- 11B May 2007 – UV, *Picea glauca*/*Populus tremuloides*, maintenance area west of Park Office, 52.487, 112.217, 708 m.
- 11C May 2007 – UV, meadow with aspen/buckbrush/silverwillow/chokecherry, 1 km E of Park Office, 52.487, 112.208, 712 m.
- 29A August 2007 – UV, N-facing slope, *Picea glauca* woods, west of Park Office, 52.487, 112.217, 730 m.
- 29B August 2007 – UV, *Picea glauca*/*Populus tremuloides*, maintenance area west of Park Office, 52.487, 112.217, 708 m.
- 29C August 2007 – UV, meadow with aspen/buckbrush/silverwillow/chokecherry, 1 km E of Park Office, 52.487, 112.208, 712 m.
- 25A July 2008 – UV, meadow with aspen/buckbrush/silverwillow/chokecherry, at base of upper trail. 1 km E of Park Office. 52.487, -112.208, 712 m.
- 25B July 2008 – UV, N-facing slope, *Picea glauca* woods, west of Park Office, 52.487, -112.217, 730 m.
- 25C July 2008 – UV, *Picea glauca*/*Populus tremuloides* woods, maintenance area west of Park Office, 52.487, -112.217, 708 m.
- 30A August 2009 – UV, N-facing slope, *Picea glauca* woods, west of Park Office, 52.487, -112.217, 730 m.
- 30B August 2009 – UV, N-facing slope, *Picea glauca*/*Populus tremuloides* woods, close to Park Office, 52.487, -112.213, 710 m.
- 30C August 2009 – UV, meadow with aspen/buckbrush/silverwillow/chokecherry,, 1 km E of Park Office, base of upper trail, 52.487, -112.208, 712 m.
- 13 September 2009 – diurnal, lower hiking trail, Buffalo Lake Naturalists/Camrose Outdoor Club hike with Conservation Officer Ashley Patterson, 52.493, 112.23, 690 m.