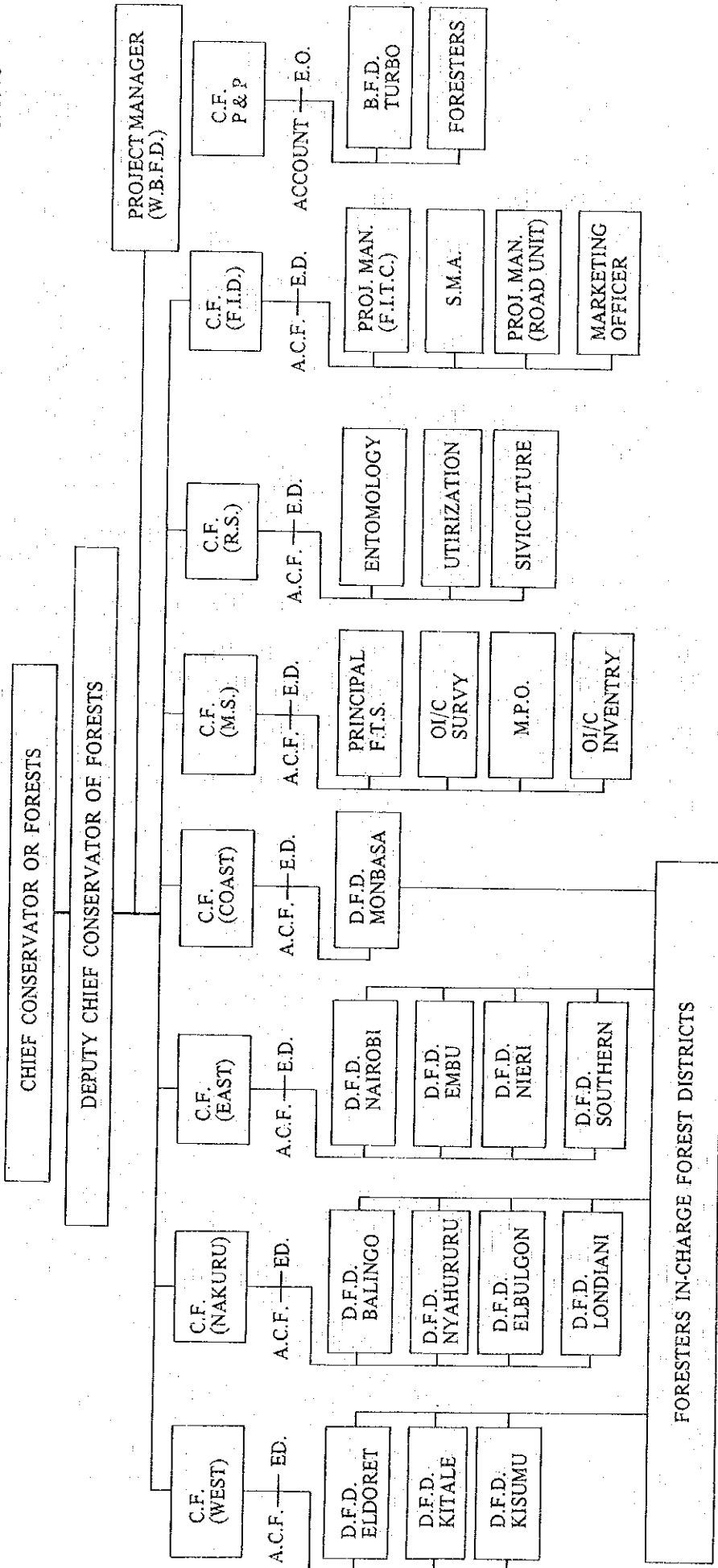


資料4. 主要樹種別平均立木処分価格表

BOTANICAL NAME:	COMMON NAME.	AVERAGE SELLING PRICE PER CUBIC METER F.O.R.MILL STATION
1. <i>Acacia melanoxylon</i>	Australian Blackwood.	569.99
2. <i>Albizia gummifera</i>	Mukurue	429.63
3. <i>Aningeria adolfi-friederici</i> .	Muna	290.12
4. <i>Bosquiea phoberos</i>	Mugwi or Mlandege	164.54
5. <i>Brachylaena hutchinsii</i>	Muhuhu or Muhugu	488.69
6. <i>Casearia battiscombei</i>	Muirungi	210.09
7. <i>Cassipourea malosana</i>	musaisi	366.62
8. <i>Celtis soyauxii</i>	Shiunza	521.60
9. <i>Chlorophora excelsa</i>	Mvuli	1186.00
10. <i>Croton megalocarpus</i>	Musine	211.88
11. <i>Cupressus</i> spp.	Cypress	248.17
12. <i>Dombeya goetzenii</i>	Mukeo	378.85
13. <i>Ekebergia rueppeliana</i>	Mununga	467.15
14. <i>Eucalyptus regnans</i>	Giant gum	433.89
15. <i>Fagara macrophylla-leprieruri</i>	Satinwood or shikuma	600.27
16. <i>Grevillea robusta</i>	Grevillea	296.93
17. <i>Hagenia abyssinica</i>	Hagenia or Mumondo	1077.67
18. <i>Juniperus procera</i>	Cedar	365.47
19. <i>Lovoa swynnertonii</i>	Mukongoro	1185.81
20. <i>Macaranga</i> spp.	Macaranga	-
21. <i>Maesopsis eminii</i>	Musizi	240.10
22. <i>Manilkara</i> spp.	Ludilio or Mti-chuma or Mngombo.	772.87
23. <i>Ocotoa usambarensis</i>	Camphor	555.10
24. <i>Olea africana</i>	Mutamaiyu or Brown Olive	471.38
25. <i>Maba abyssinica</i>	Muirosi	520.55
26. <i>Vitex keniensis</i>	Muhuru (Meru oak)	792.29
27. <i>Olea Hochestetteri</i>	Musharagi	632.77
28. <i>Combretum schumannii</i>	Ngururo	578.56
29. <i>Olea wewitschii</i>	Elgon Olive, Loliondo	619.35
30. <i>Fagaropsis angolensis</i>	Mukarakati	761.37
31. <i>Pinus patula</i>	Patula pine	248.81

32. <i>Funtumia latifolia</i>	Mutondo	395.78.
33. <i>Pinus radiata</i>	Radiata Pine	248.81
34. <i>Strombosia scheffleri</i>	Musingu	472.00
35. <i>Podocarpus gracilior</i>	Podo	366.88
36. <i>Newtonia paniculata</i>	Mleha	541.43
37. <i>Podocarpus milanjianus</i>	Podo	372.45
38. <i>Polyscias kikuyuensis</i>	Mutati	- -
39. <i>Premna maxima</i>	Muchichio	- -



KEY.

- C.F: Conservator of Forest
- A.C.F: Assistant Conservator of Forest
- W.B.F.P: World Bank Project of Forest
- B & P: Pulp and Paper
- F.I.D: Forest Industrial Department
- R.S: Research Services
- M.S: Management Services
- E.O: Executive Officer
- D.F.O: Divisional Forest Officer
- F.T.S: Forest Training School
- M.P.O: Management Plan Officer
- F.I.T.C: Forest Industrial Training Center
- S.M.A: Sawmill Adviser

林 相 写 真 集

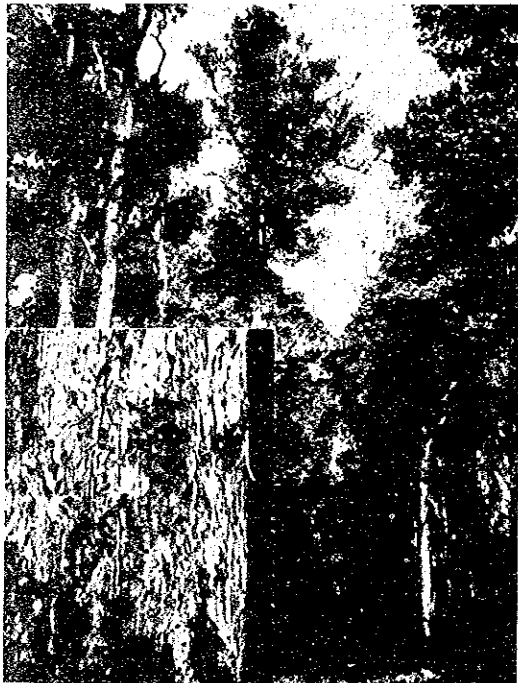
主要樹種の外形写真



Ⓐ 針葉樹：Podo：建築，家具材



Ⓑ Podo：孤立木



Ⓒ 針葉樹：Podo：建築，家具材



Ⓓ 広葉樹：Walnat，Mukongo
家具材



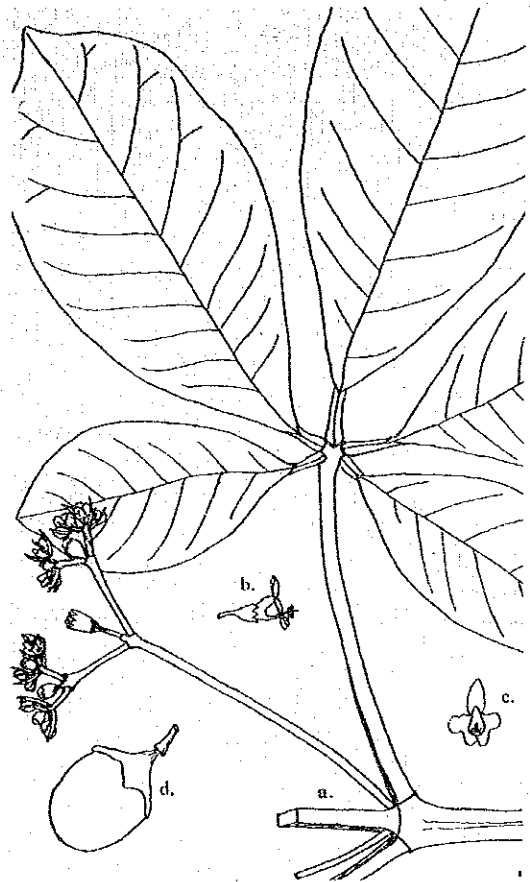
⑤ 広葉樹: Ea Camphor
建築, 家具材



⑥ 広葉樹: Mwrina, Meru Teak
家具材



⑨ *Cordia abyssinica* R. Br.



⑩ *Vitex doniana* Sweet

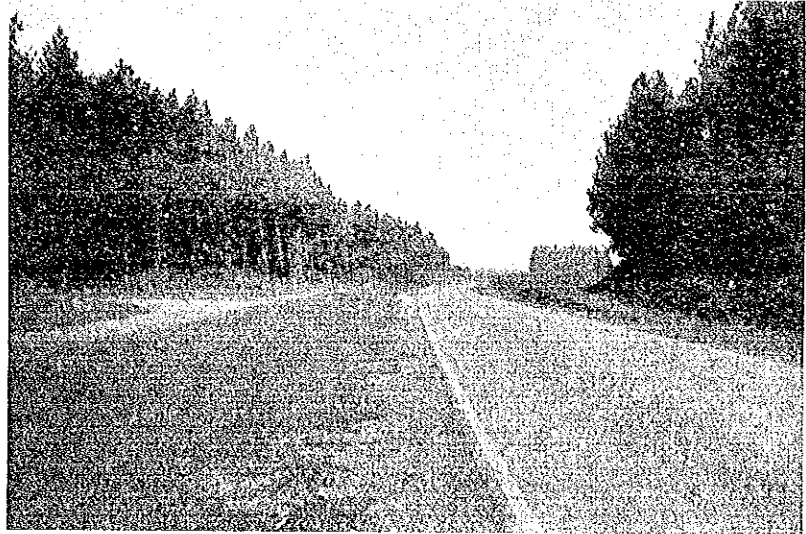


① N: Africana Cedar
建築材

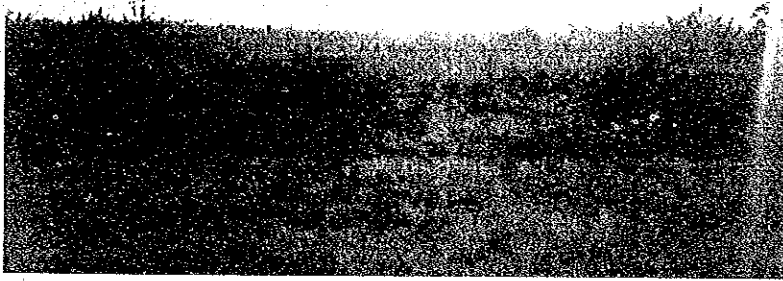


① シーダーの仕令林

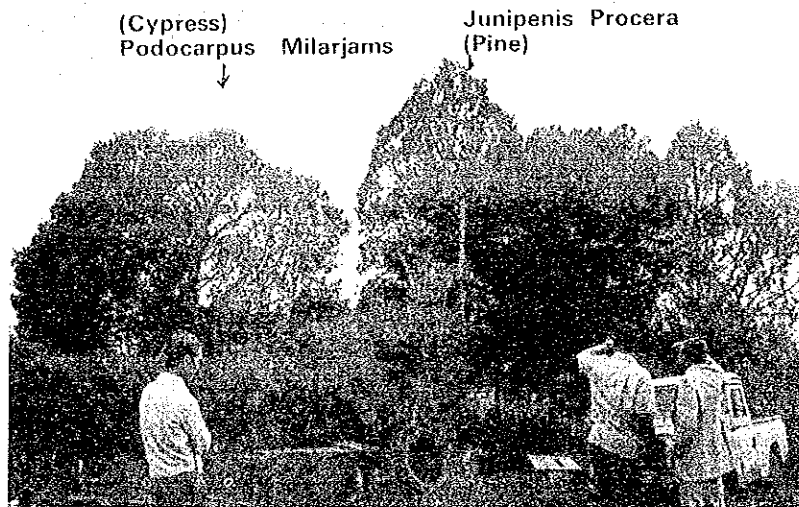
(h) 左 Cypress
 H= 12 m D= 25 cm
 20年?
 右 Pine
 H= 18 m D= 20 cm



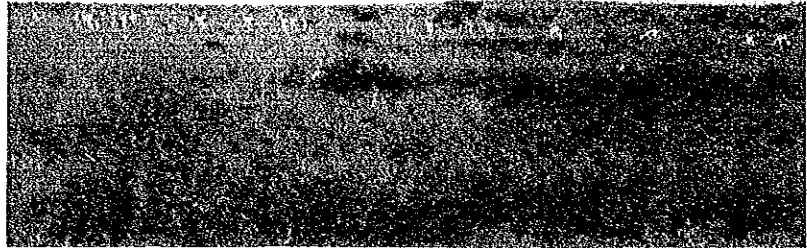
① Indinious Foresi



① Gypress と pine の樹型



④南部
Kilimajaro 平原
鹿の一群が走る



① Mt. Kenya SL 5200 m
下段の森林帯 (1800 m~2000 m)
中段以上は野生動物特別保護区

JICA