

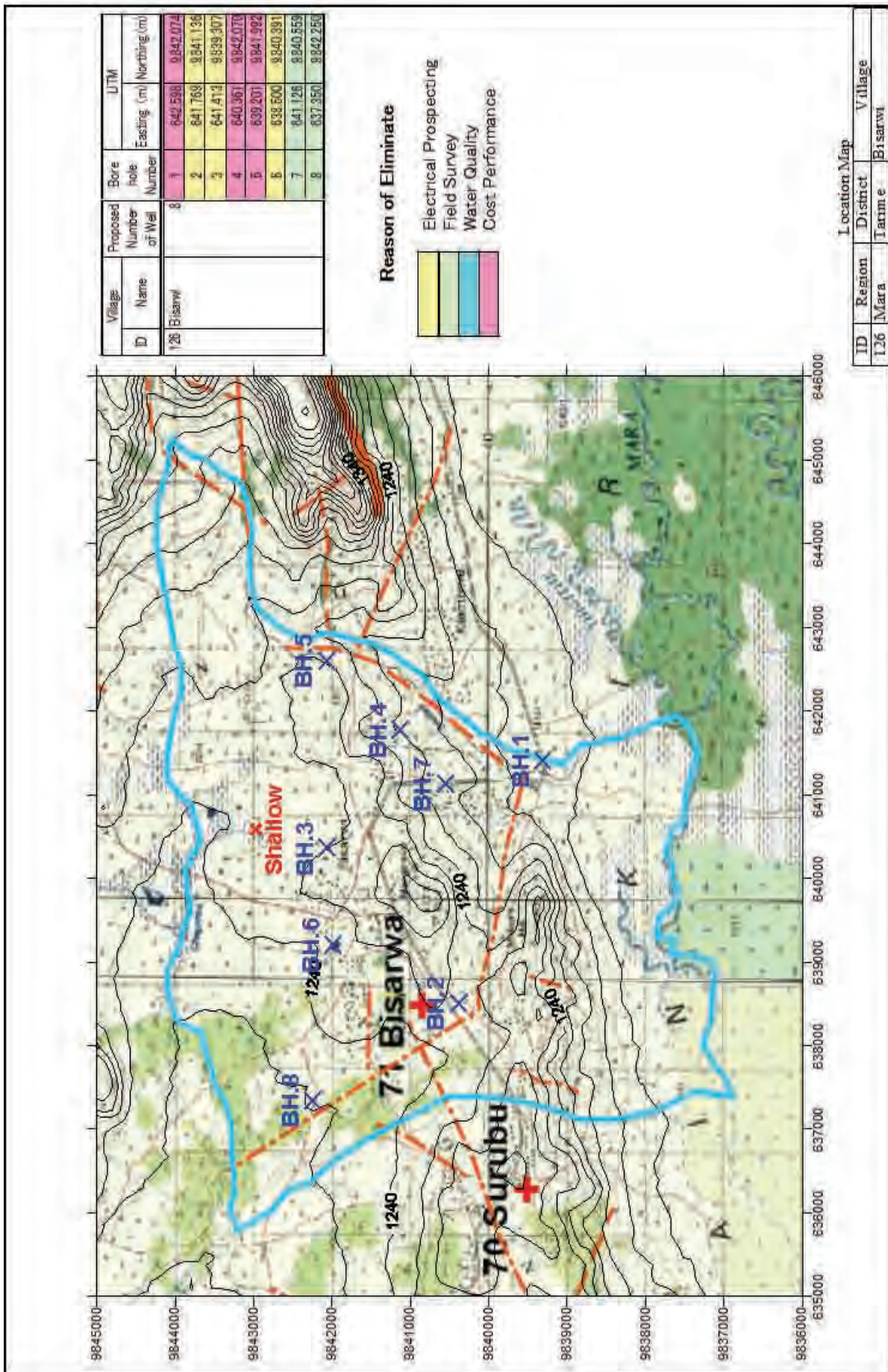
Village ID	Village Name	Proposed Number of Well	Bore Hole		UTM	
			Number	Number	Easting (m)	Northing (m)
125	Kiwanji	5	1	5	670,354	9,837,660
			2		670,951	9,836,598
			3		671,070	9,840,270
			4		670,603	9,841,952
			5		669,559	9,839,046

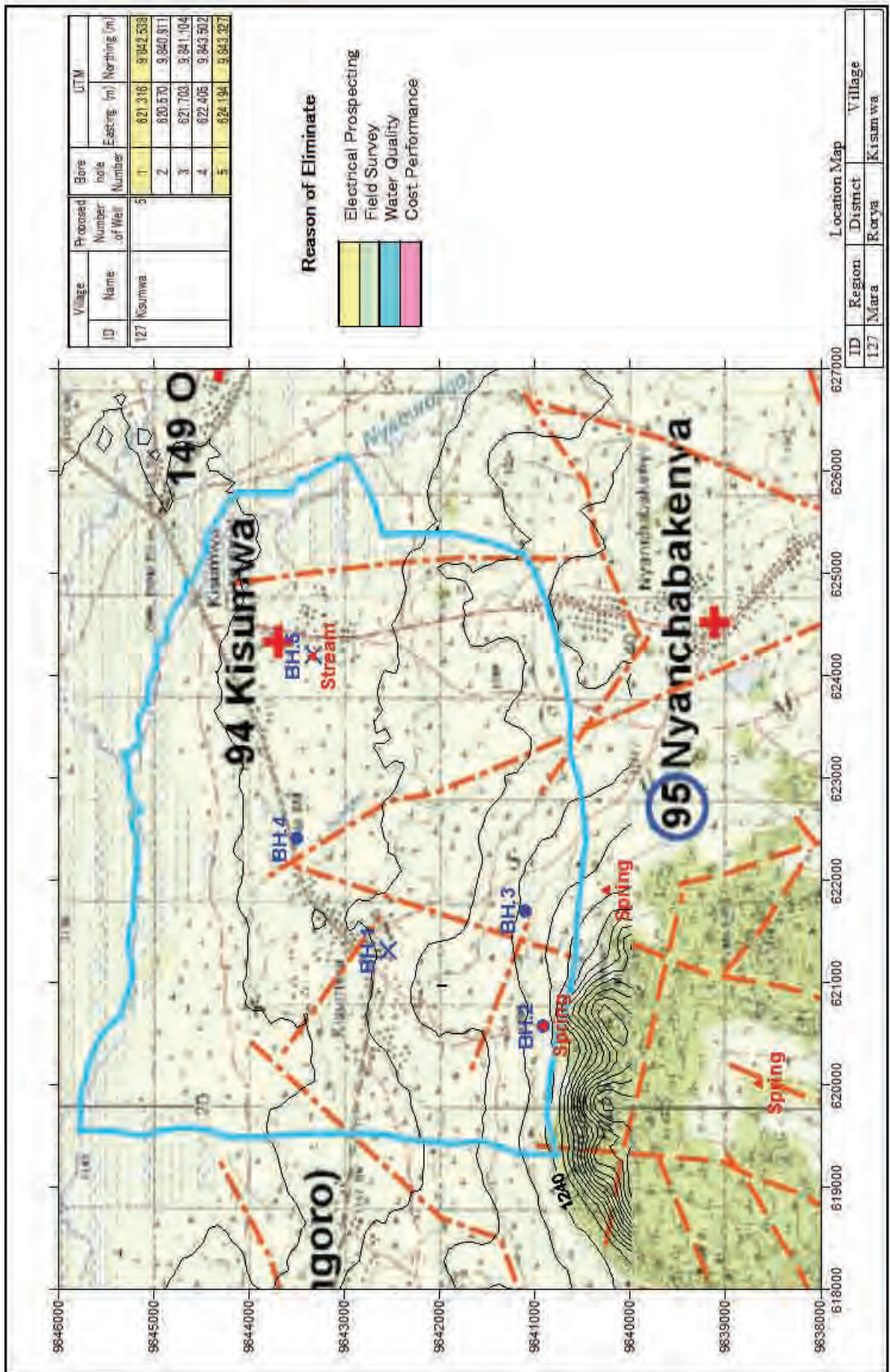
Reason of Eliminate

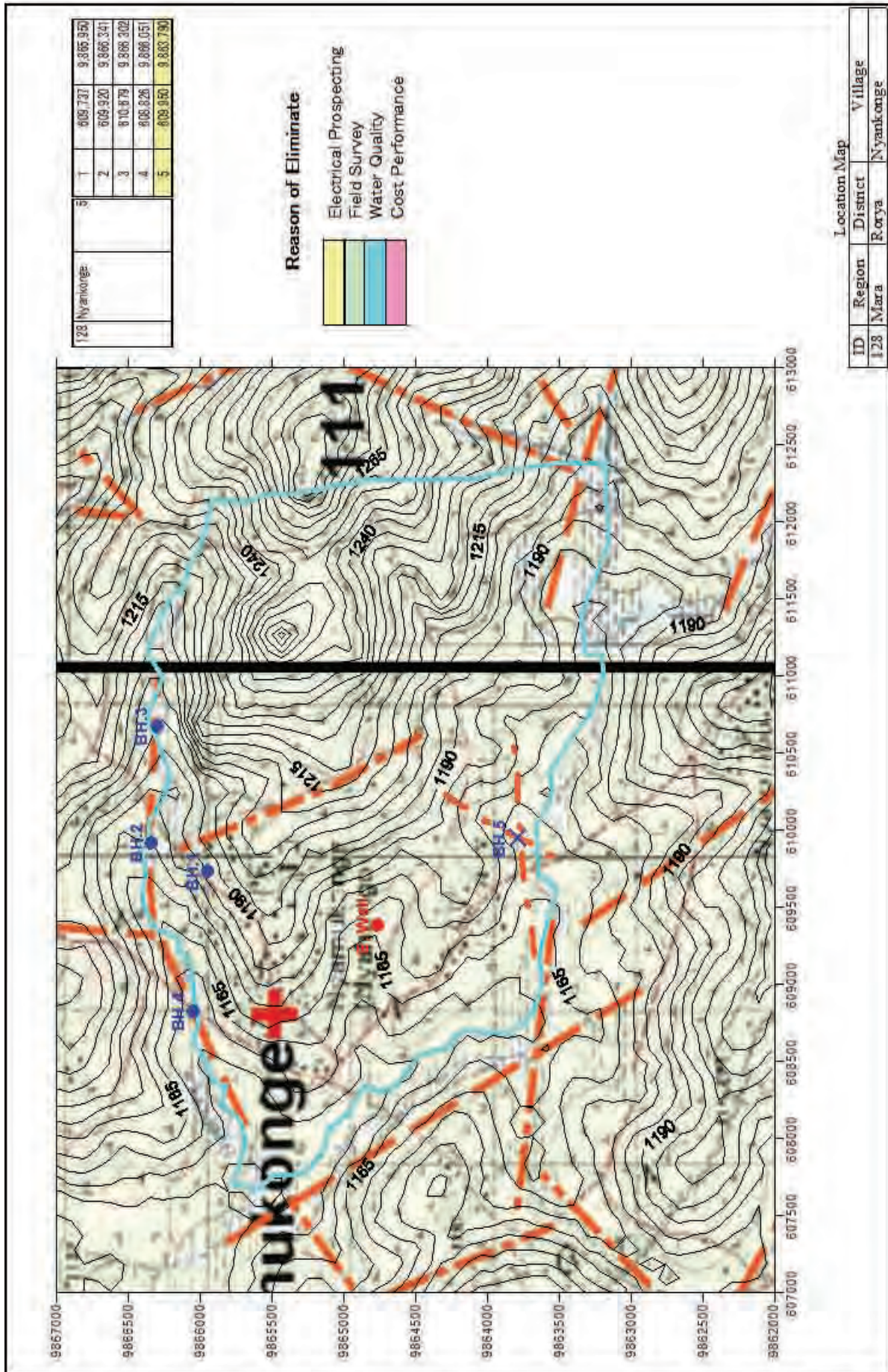
- Electrical Prospecting
- Field Survey
- Water Quality
- Cost Performance

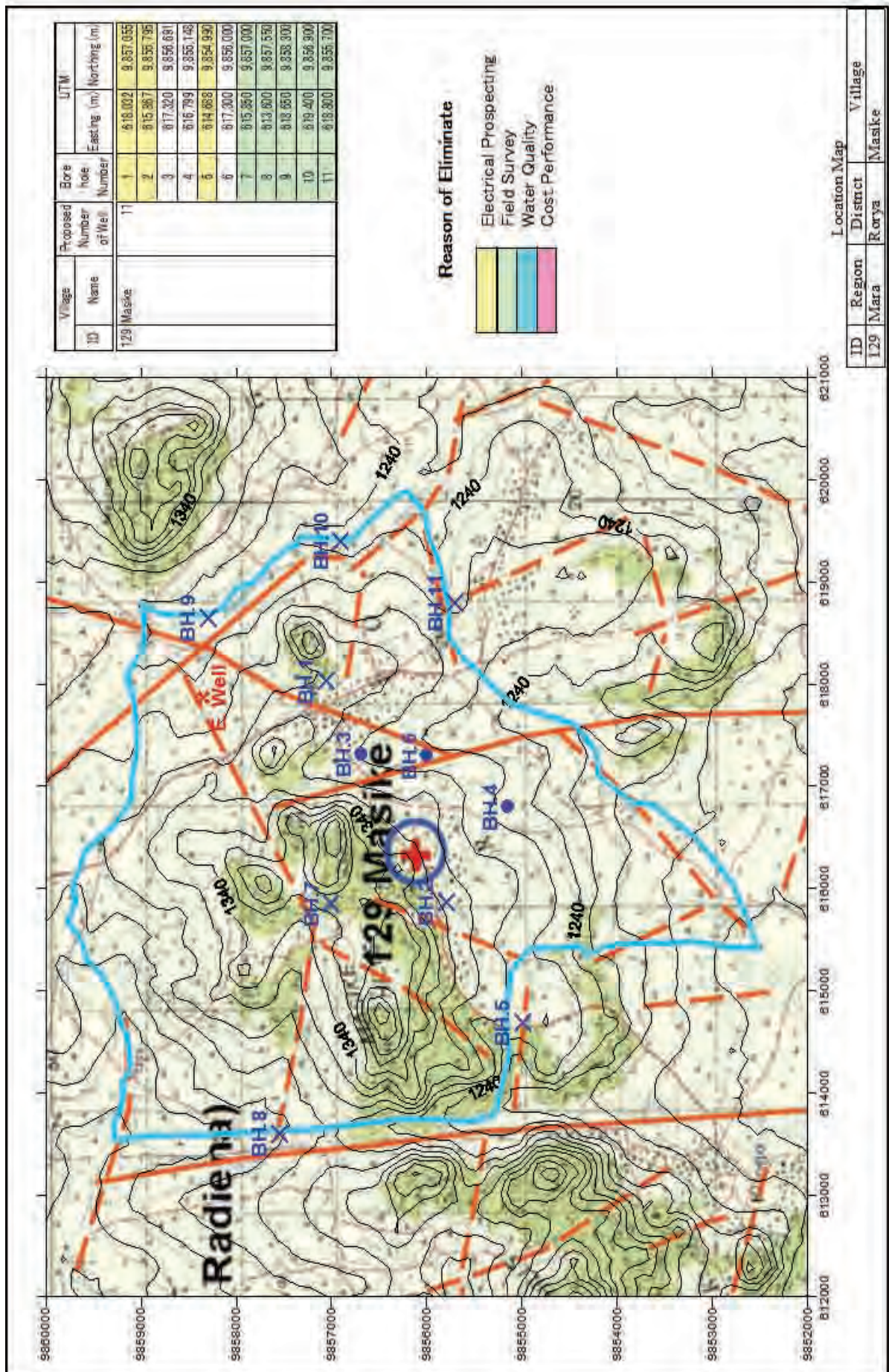
Location Map

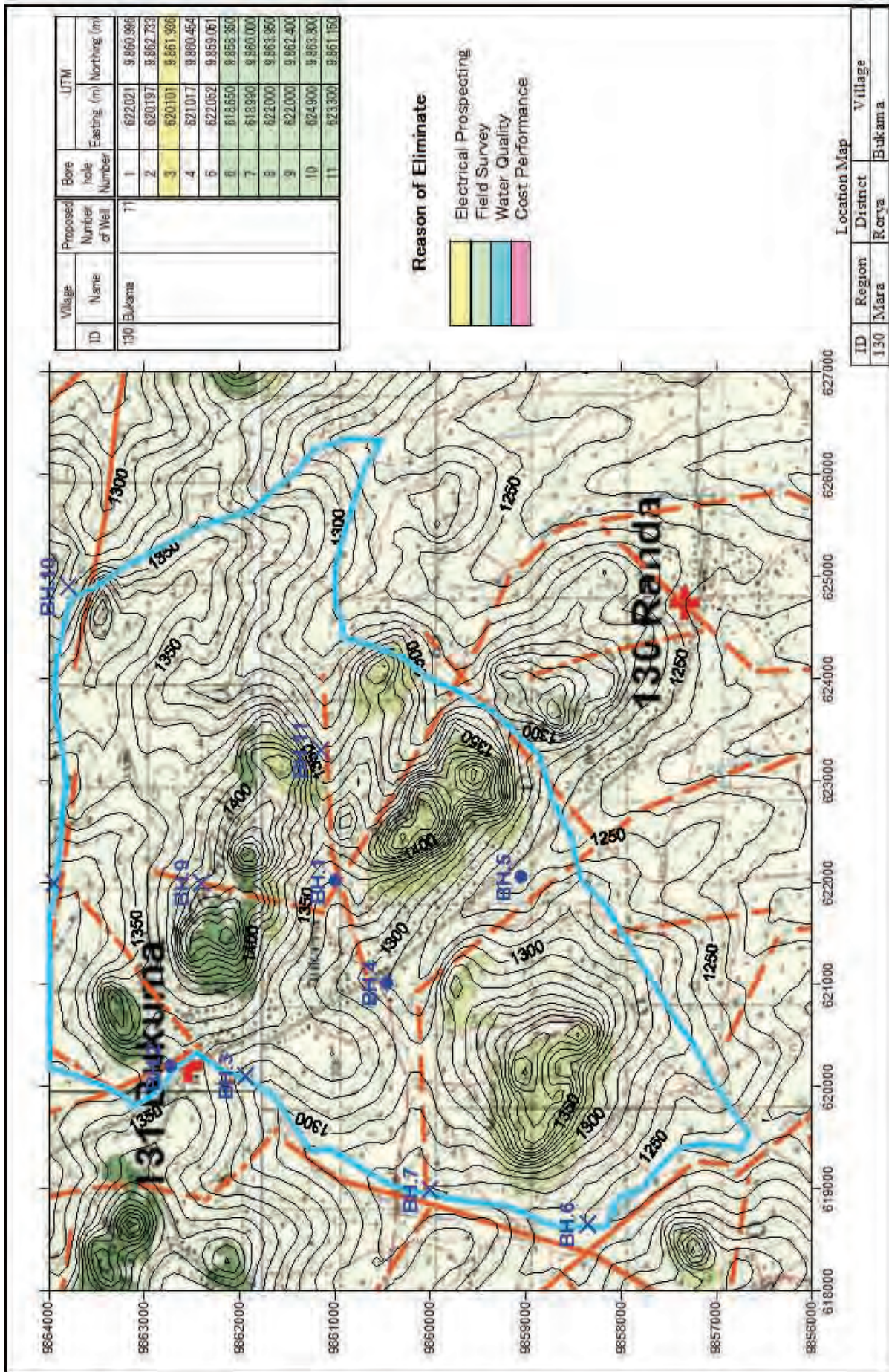
ID	Region	District	Village
125	Mara	Tarime	Kiwanja

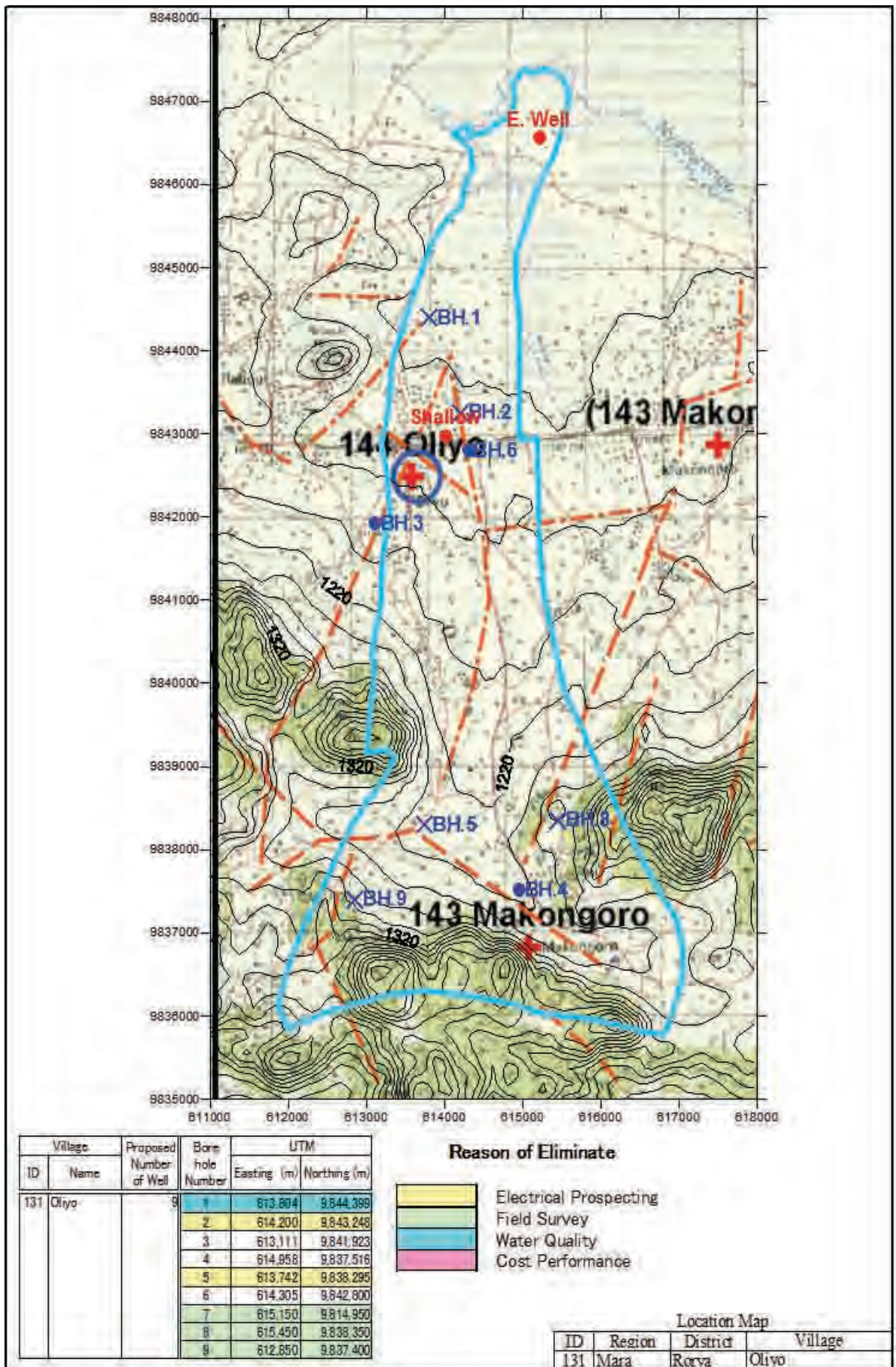


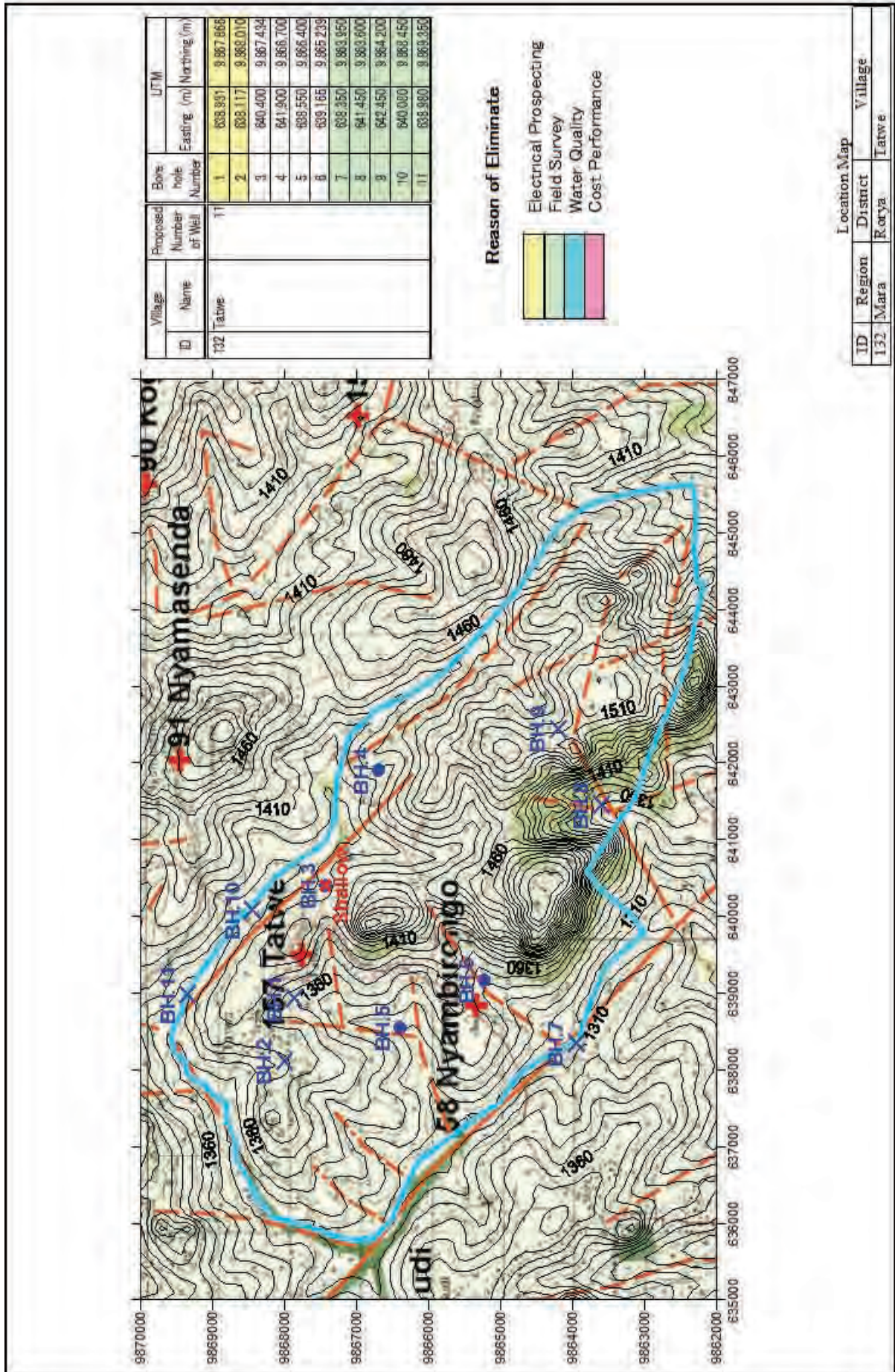








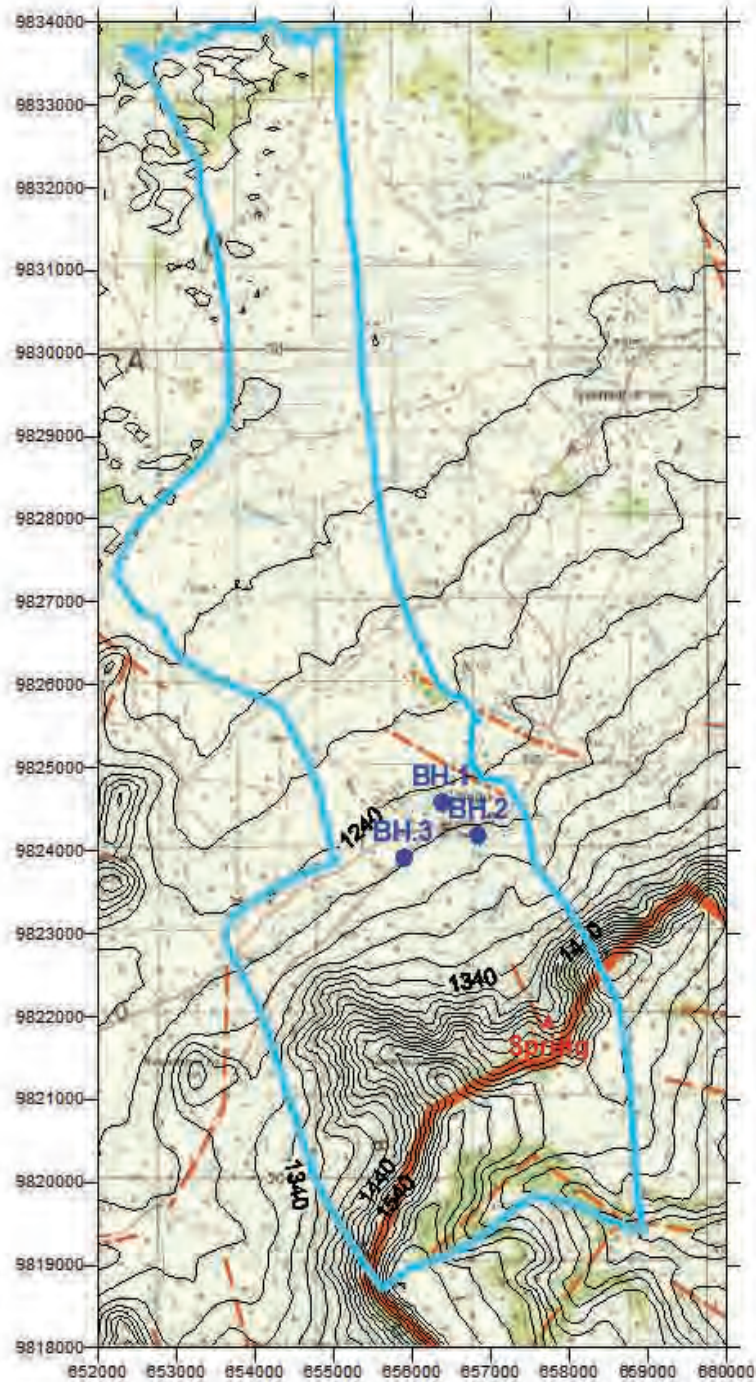




ID	Village		Proposed Number of Well	Bore hole Number	UTM	
	Name	Easting (m)			Northing (m)	
132	Tatave		11	1	838,981	9,987,866
				2	838,117	9,988,010
				3	840,400	9,987,434
				4	841,900	9,986,700
				5	838,550	9,986,400
				6	839,165	9,985,239
				7	838,350	9,983,856
				8	841,450	9,983,600
				9	842,450	9,984,200
				10	840,000	9,988,450
				11	838,980	9,989,350

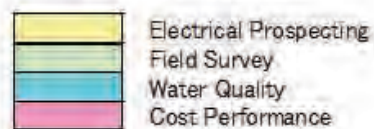
Location Map

ID	Region	District	Village
132	Mara	Rorya	Tatave



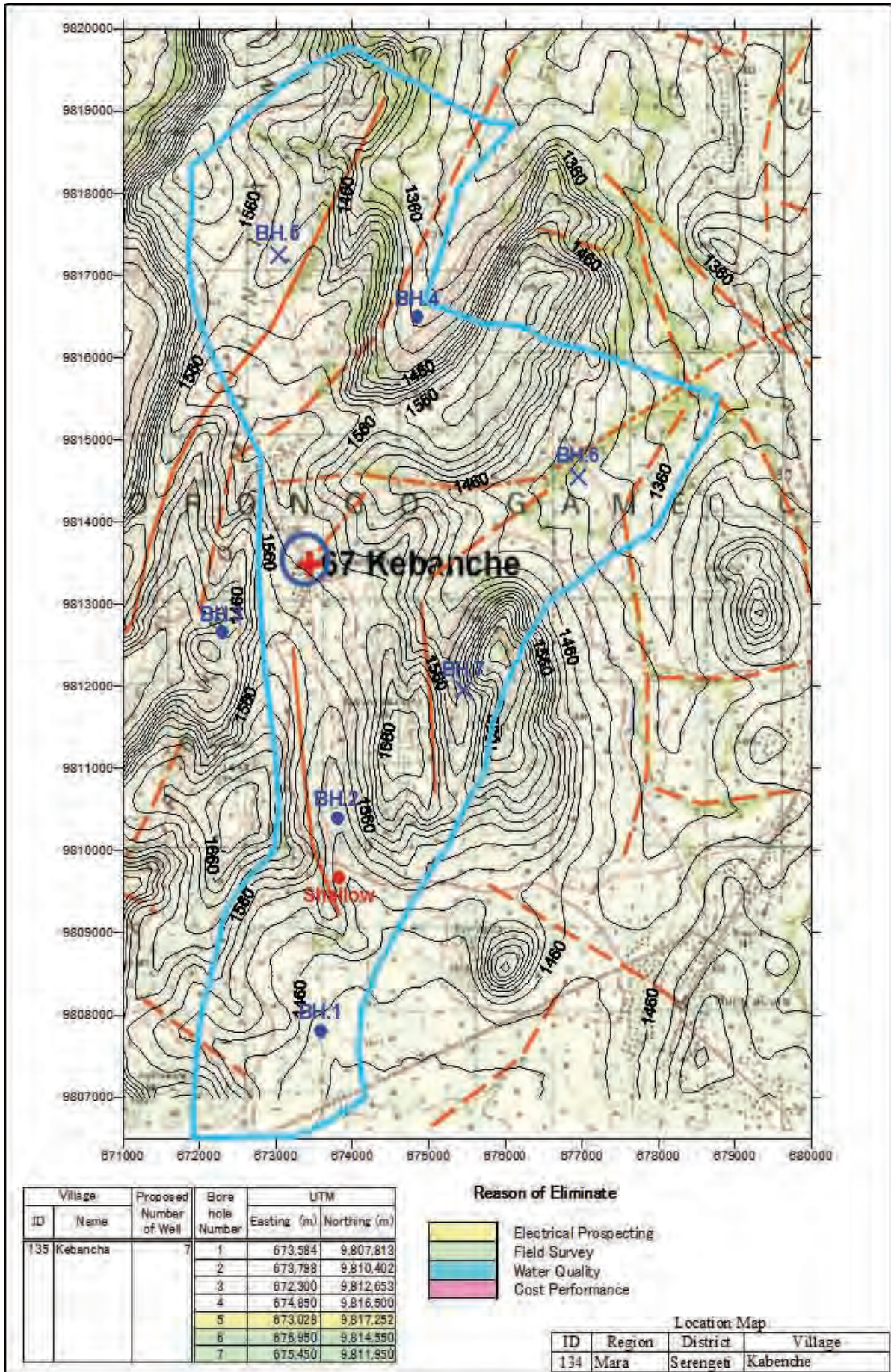
Village		Proposed Number of Well	Bore hole Number	UTM	
ID	Name			Easting (m)	Northing (m)
133	Busawe	3	1	656.835	9.824.197
			2	656.374	9.824.596
			3	655.888	9.823.928

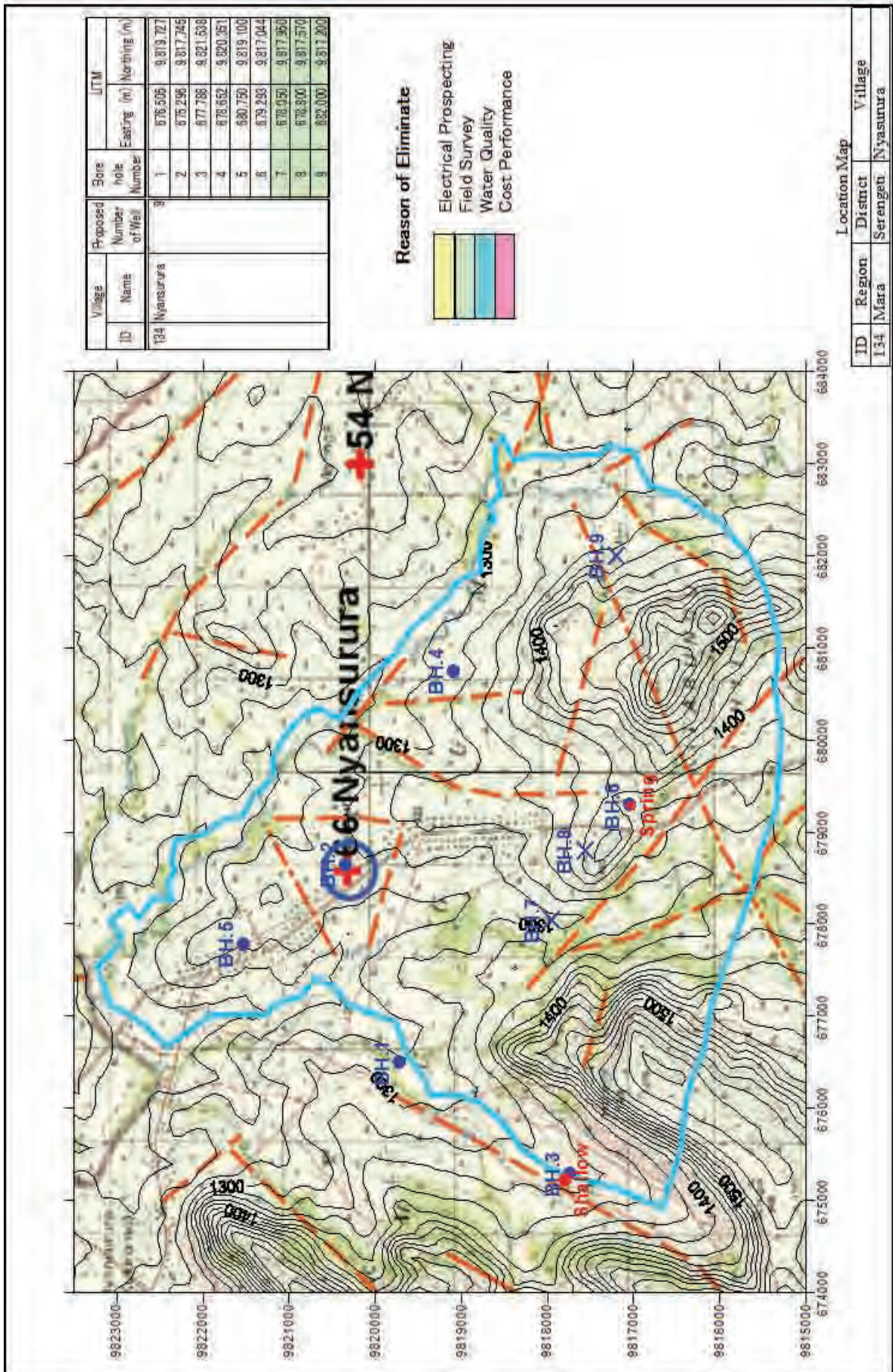
Reason of Eliminate

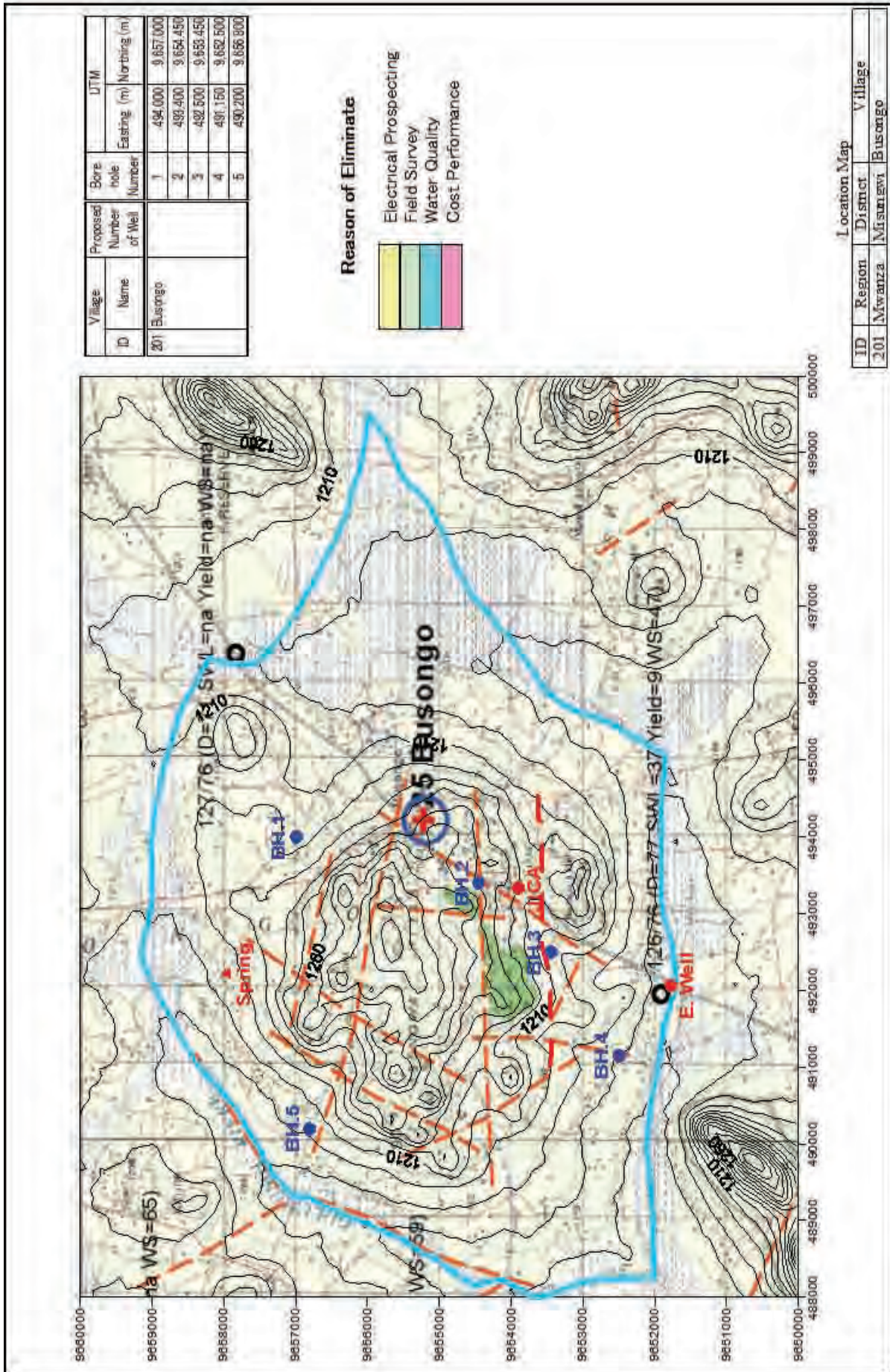


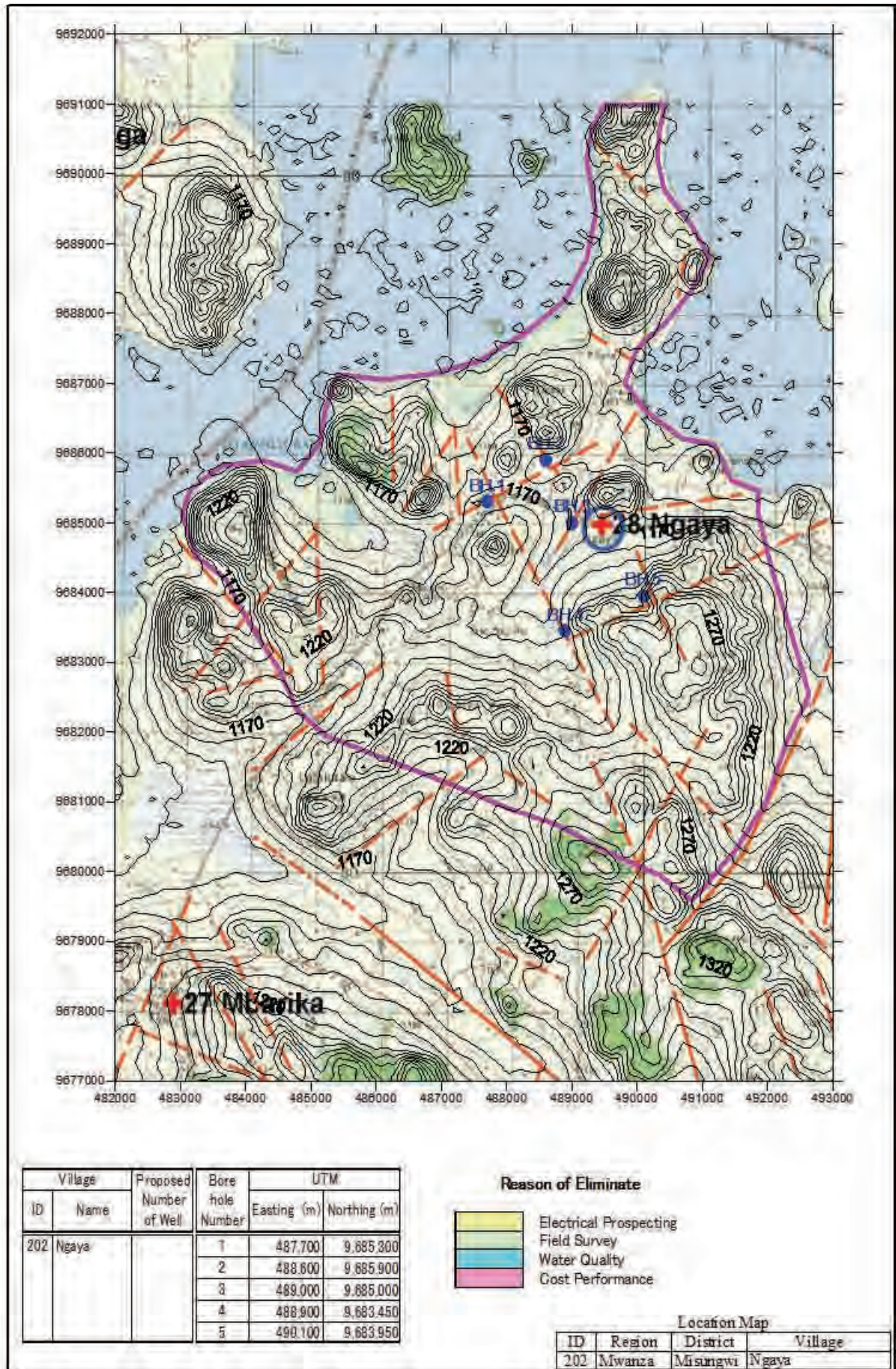
Location Map

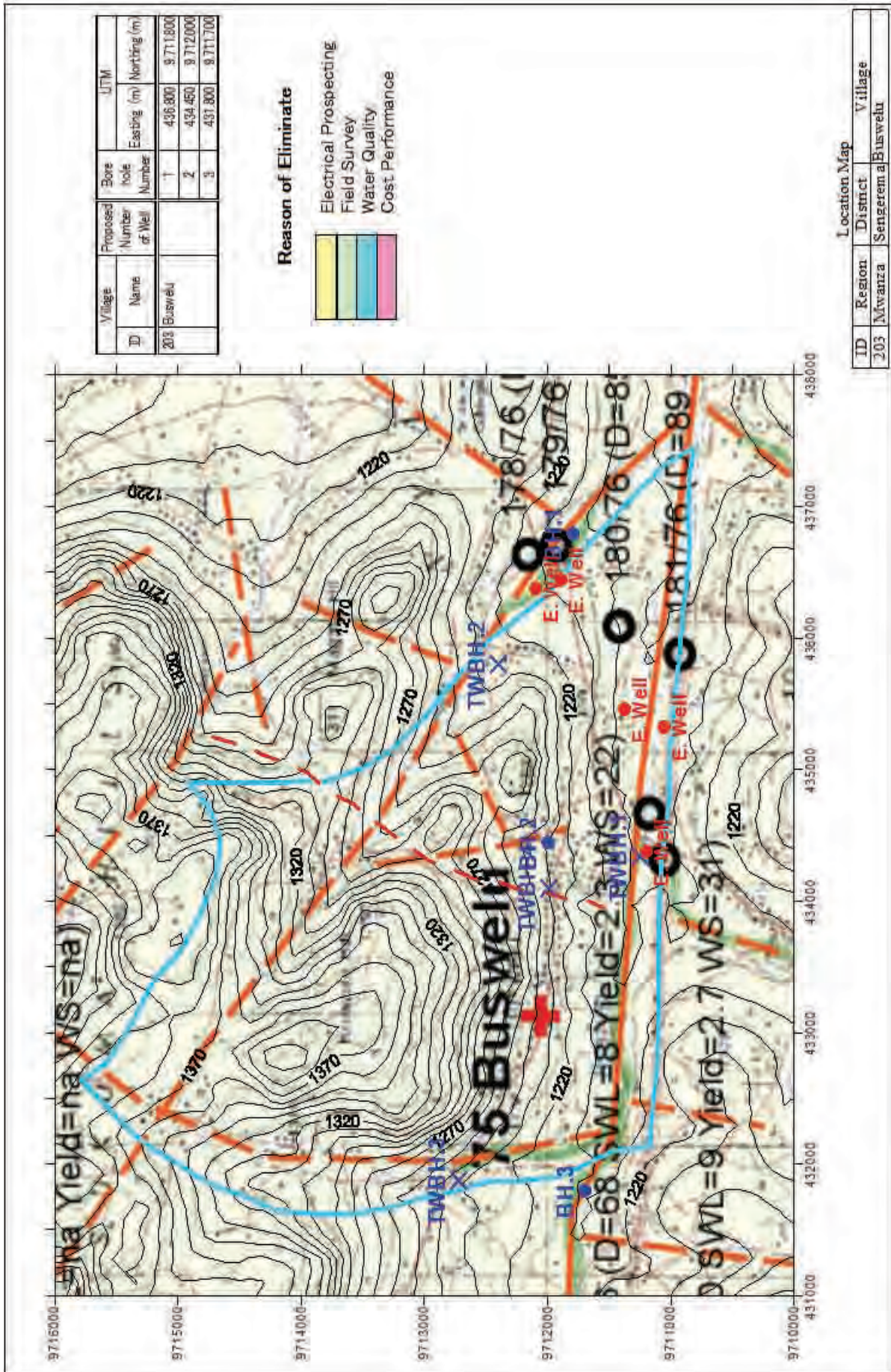
ID	Region	District	Village
133	Mara	Serengeti	Busawe

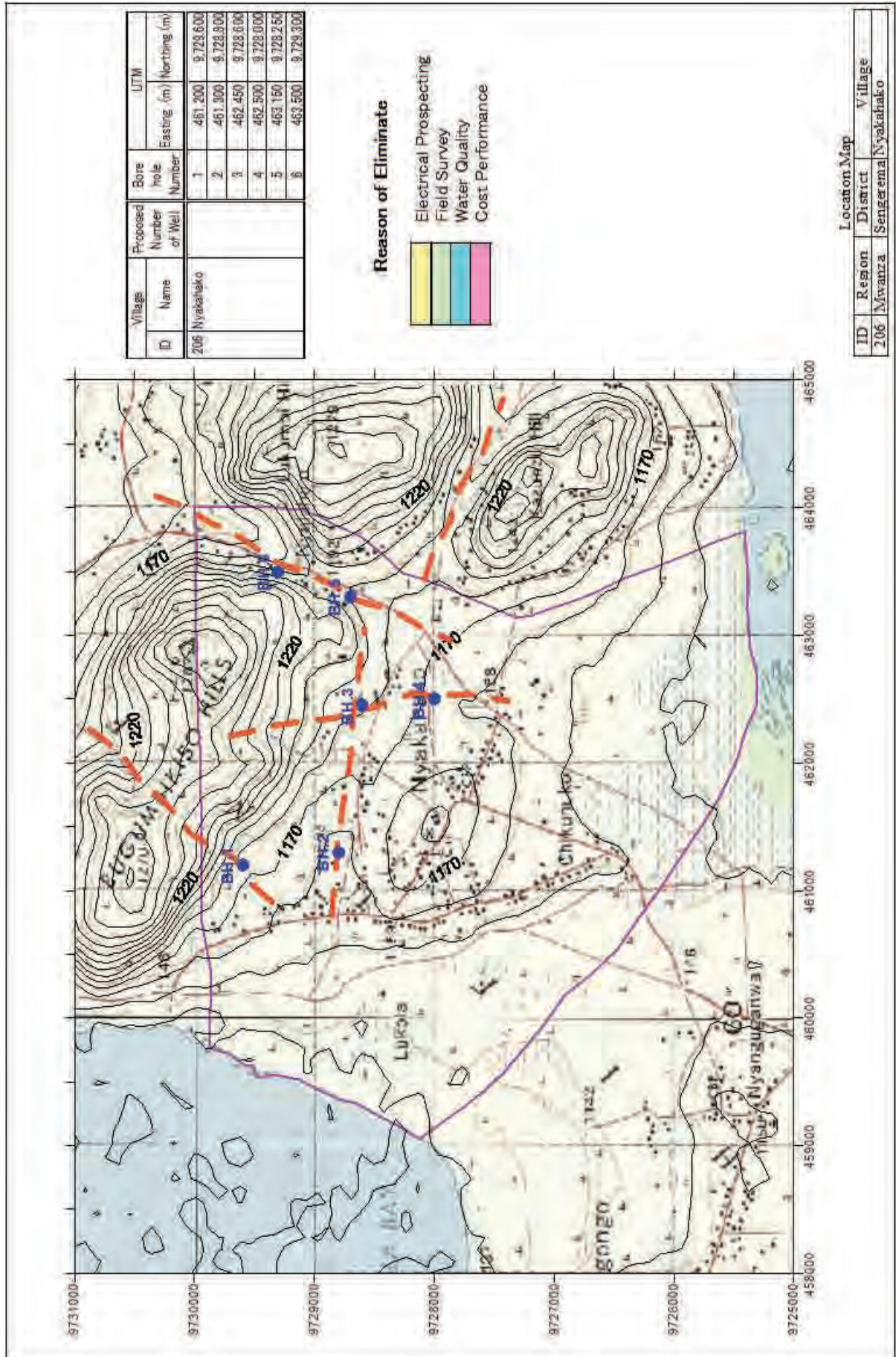


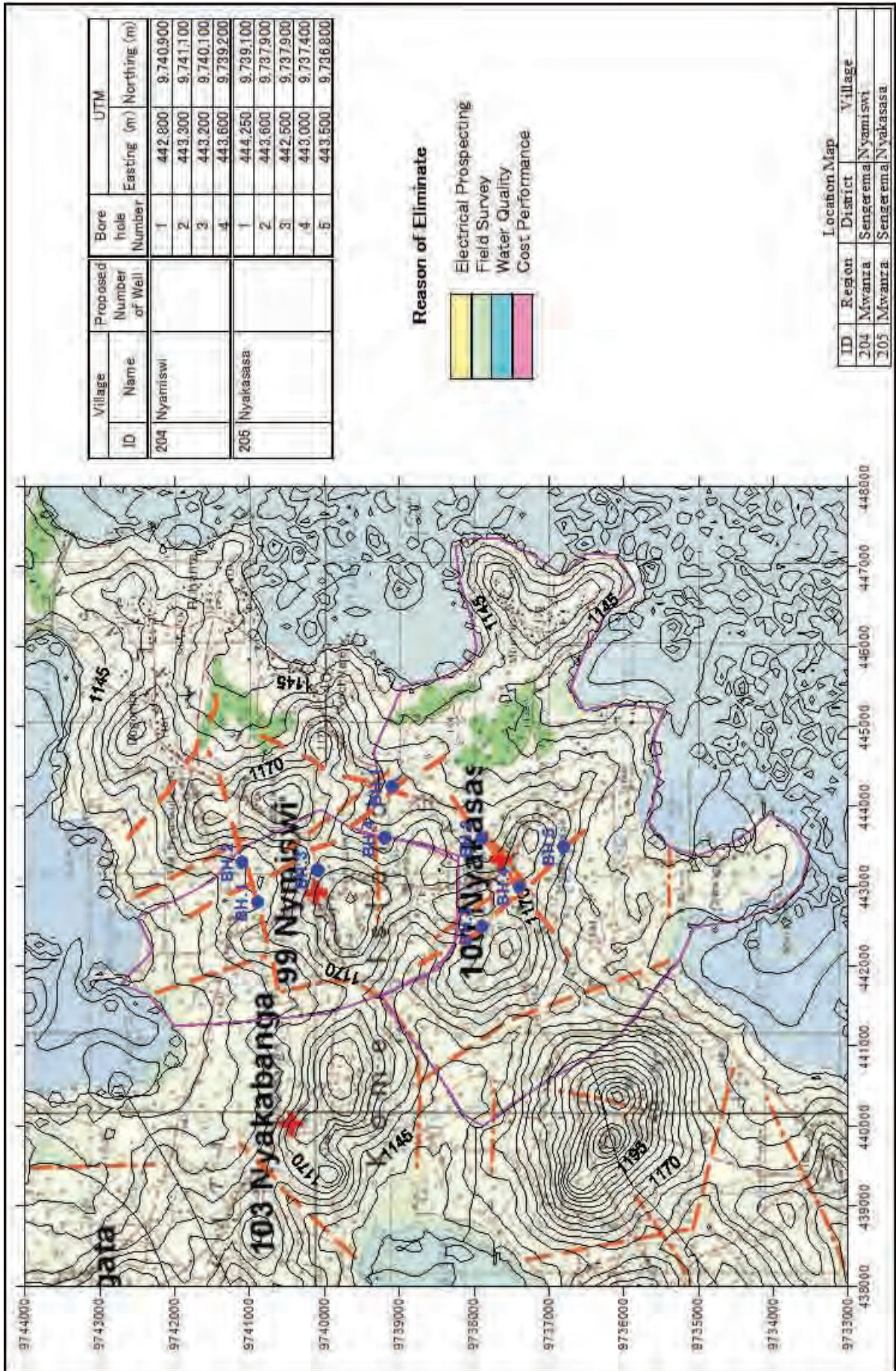


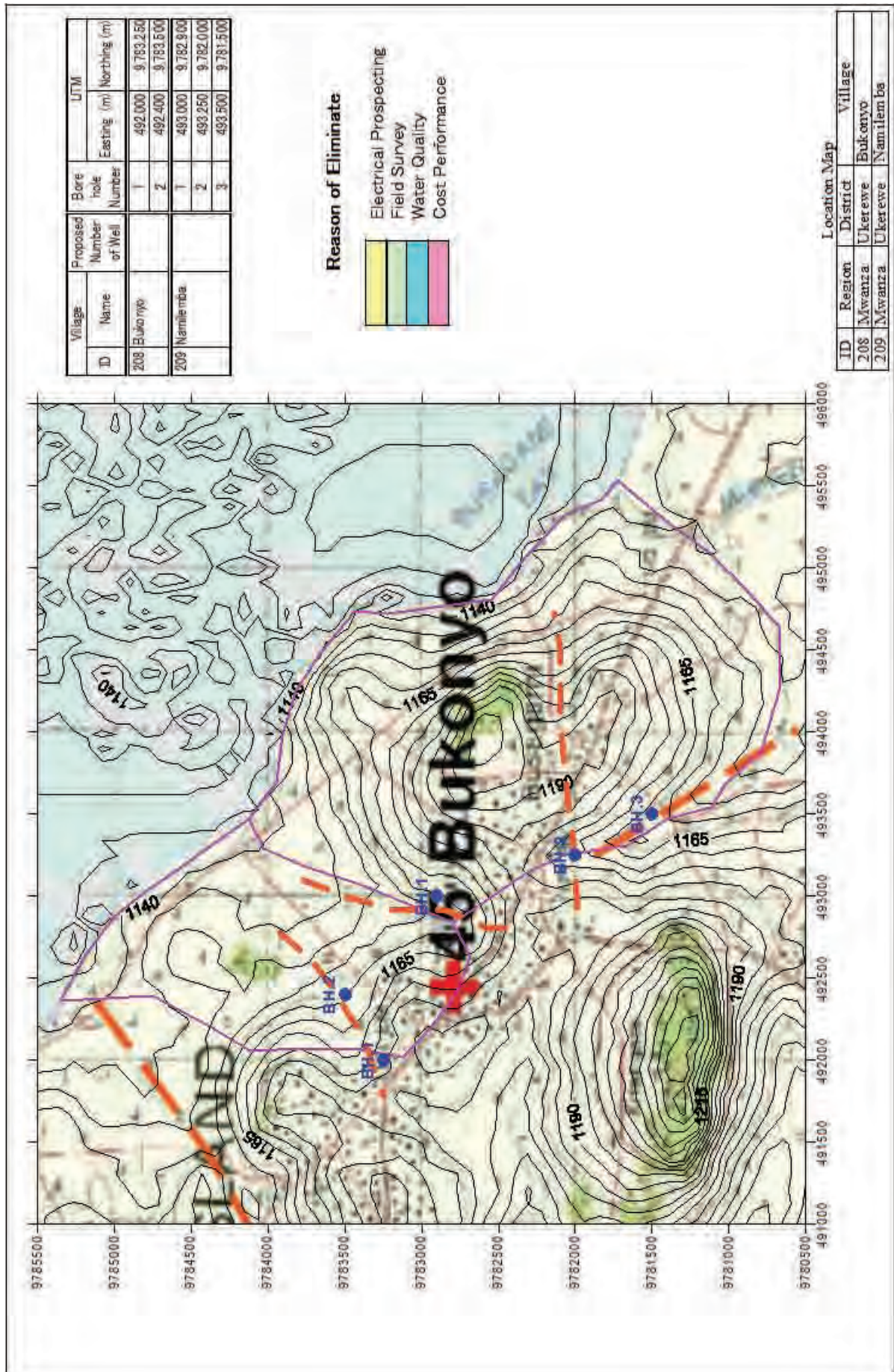


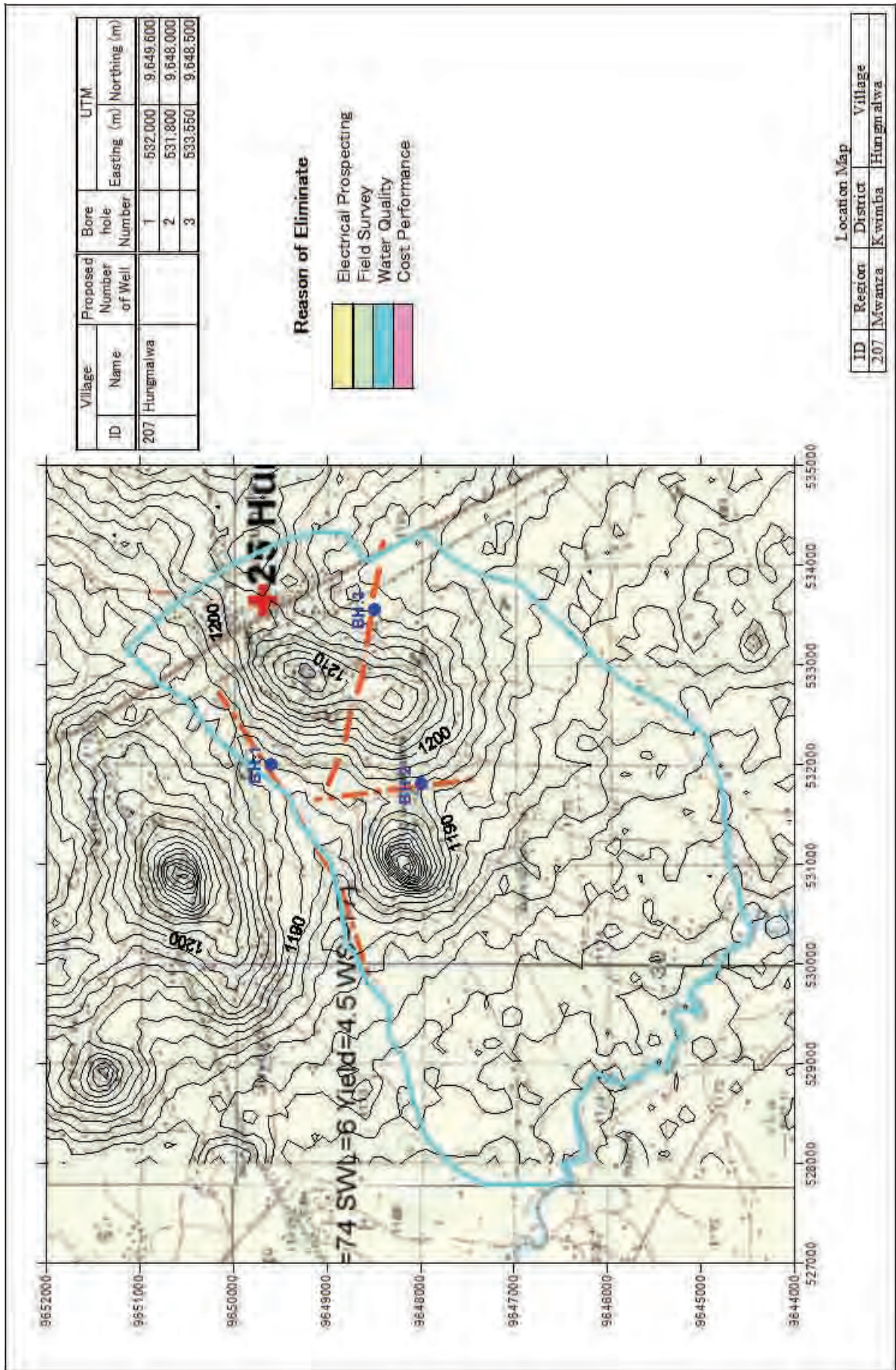


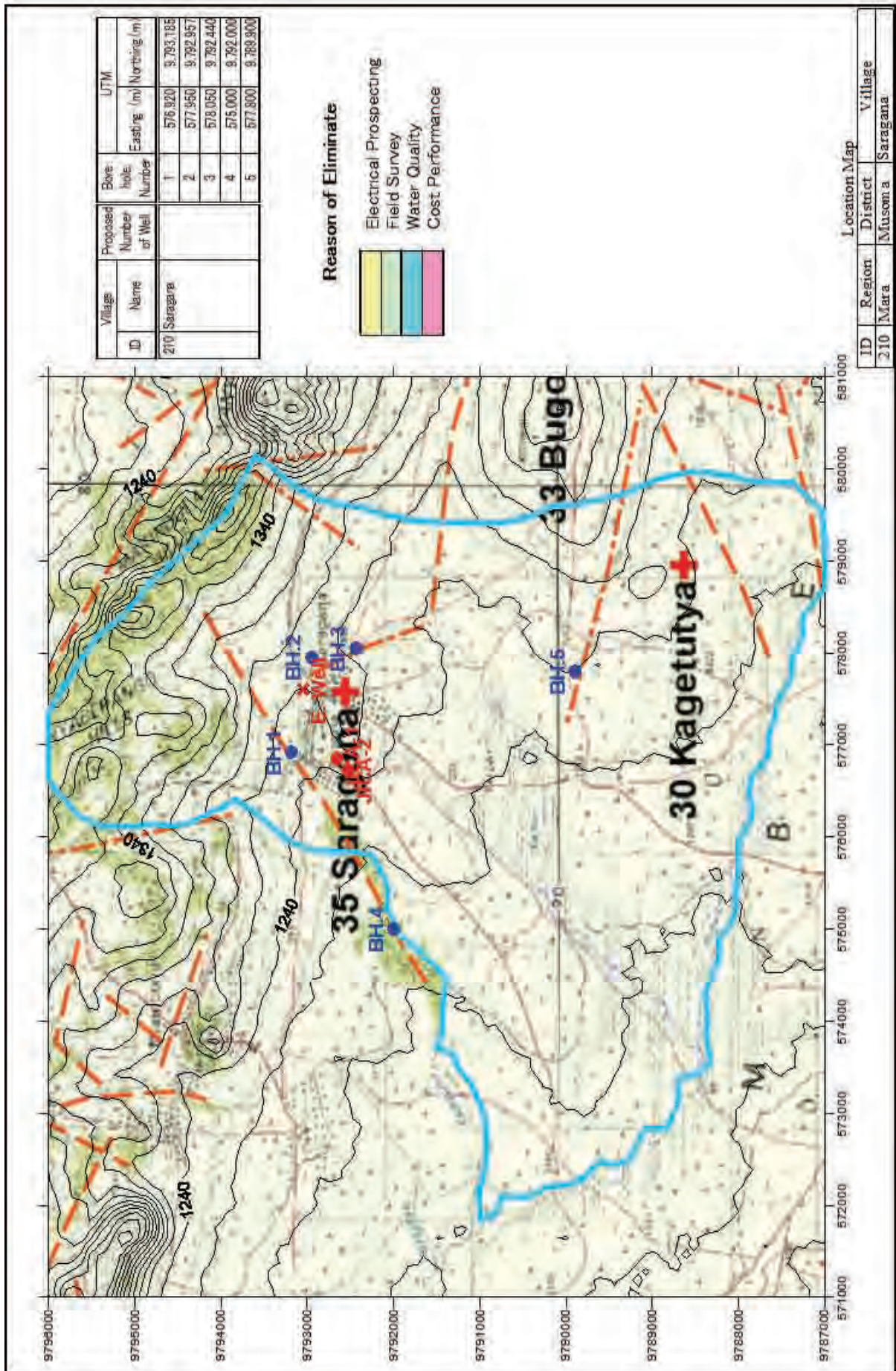












(8) ハンドポンプ井戸選定結果一覧
(井戸番号は(7) 予定掘削地点の井戸番号と一致)

州	県	ID	村落 名称	要請井戸 本数	井戸 番号	座標		他ドナー プロジェクト	現地踏査		水質試験		物理探査		費用対効果		選定井戸					
						東経(m)	北緯(m)		判定	理由	判定	理由	判定	理由	判定	地質ゾー ン	理想成功 率(%)	井戸	理想成功 率(%)	東経	北緯	
Sengerema	Sogoso	101		9	1	452,400	9,696,000							1	85	4	85	452,400	9,696,000			
					2	450,903	9,695,349							5	40	2	40	450,903	9,695,349			
					3	453,147	9,694,616					X	理由 ≤20									
					4	456,751	9,696,480					X	理由 ≤20									
					5	455,929	9,694,743										5	40	5	40	455,929	9,694,743
					6	453,467	9,696,381										5	40	6	40	453,467	9,696,381
					7	455,182	9,695,973					X	理由 ①									
					8	456,100	9,694,000					X	理由 ①、②									
Sengerema	Sotta	102		7	1	468,911	9,689,833			X	理由 F、NI4											
					2	470,300	9,672,800					X	理由 ≤20									
					3	471,025	9,670,773									4	75	3	75	471,025	9,670,773	
					4	470,000	9,674,100									4	75	4	75	470,000	9,674,100	
					5	466,602	9,672,115									4	75	5	75	466,602	9,672,115	
					6	465,967	9,671,601									4	75	6	75	465,967	9,671,601	
					7	467,100	9,675,050			X	理由 ①、②											
Sengerema	Isole	103		7	1	469,390	9,686,260															
					2	471,395	9,685,563					X	理由 F、NI4									
					3	473,022	9,685,744					X	理由 F、NI4									
					4	471,215	9,688,918															
					5	470,768	9,689,813									X	理由 ≤20					
					6	469,016	9,688,087															
					7	473,650	9,690,200			X	理由 ①、④											
Sengerema	Busekesete	104		7	1	422,931	9,713,852															
					2	422,658	9,714,156															
					3	423,349	9,715,219									X	理由 ≤20					
					4	426,312	9,713,399															
					5	424,859	9,713,525									X	理由 ≤20					
					6	425,949	9,715,041									X	理由 ≤20					
					7	425,400	9,715,900			X	理由 ①											
Sengerema	Katoma	105		8	1	429,805	9,716,958															
					2	430,101	9,716,307															
					3	428,982	9,713,739															
					4	429,732	9,713,048									X	理由 ≤20					
					5	427,775	9,715,033															
					6	429,393	9,718,070									X	理由 ≤20					
					7	429,764	9,718,500															
					8	430,600	9,711,950			X	理由 ③、④											
Sengerema	Magulukenda	106		8	1	424,958	9,719,052															
					2	424,745	9,718,037															
					3	425,973	9,720,216															
					4	426,625	9,720,673															
					5	425,471	9,721,702															
					6	425,011	9,721,771															
					7	426,832	9,719,137															
					8	425,850	9,718,350			X	理由 ①、④											

州	県	ID	村落名称	要請井戸本数	座標		他トナープロジェクト		現地踏査		水質試験		物理探査		費用対効果		選定井戸							
					東経(m)	北緯(m)	判定	理由	判定	理由	判定	理由	判定	理由	判定	地質ノーン	想定成功率(%)	井戸	想定成功率(%)	東経	北緯			
ムワンザ	Sengerema	107	Wancheche	9	1	461,413	9,684,470									1	85	1	85	461,413	9,684,470			
					2	460,322	9,683,905											5	40	2	40	460,322	9,683,905	
					3	463,231	9,686,372			X	≤20													
					4	459,998	9,687,004												5	40	4	40	459,998	9,687,004
					5	459,931	9,688,107												1	85	5	85	459,931	9,688,107
					6	459,624	9,689,040												1	85	6	85	459,624	9,689,040
					7	458,952	9,692,032			X	①、④								1	85	7	85	458,952	9,692,032
					8	457,600	9,688,050			X	①													
					9	458,990	9,684,990			X	①													
	Kwimba	108	Mhula	8	1	530,789	9,700,423									5	40	1	40	530,789	9,700,423			
					2	531,095	9,700,030			X	≤20													
3					531,736	9,698,131											1	85	3	85	531,736	9,698,131		
Magu	109	Ki jereshi	10	1	603,391	9,745,425																		
				2	603,391	9,745,425			X	≤20														
				3	605,444	9,745,855			X	≤20														
				4	604,810	9,744,802												5	40	4	40	604,810	9,744,802	
				5	602,585	9,744,577												5	40	5	40	602,585	9,744,577	
				6	603,400	9,744,003																		
				7	602,266	9,742,921																		
				8	600,639	9,742,500												5	40					
				9	605,200	9,743,700			X	①														
				10	605,050	9,741,550			X	①														
Geita	110	Bugulala	11	1	407,358	9,692,668																		
				2	407,973	9,693,904																		
				3	407,679	9,694,287												5	40	3	40	407,679	9,694,287	
				4	406,555	9,694,996												5	40	4	40	406,555	9,694,996	
				5	406,469	9,694,356												5	40	5	40	406,469	9,694,356	
				6	407,725	9,695,298												1	85	6	85	407,725	9,695,298	
				7	404,978	9,694,545																		
				8	408,938	9,693,411			X	①、③														
				9	409,950	9,693,500			X	①、③														
				10	406,450	9,691,350			X	①、④														
				11	405,350	9,692,600			X	①、③														
Geita	111	Kasota	9	1	409,273	9,697,135									5	40	1	40	409,273	9,697,135				
				2	408,231	9,697,523											1	85	2	85	408,231	9,697,523		
				3	407,851	9,697,561											5	40	3	40	407,851	9,697,561		
				4	405,343	9,698,704												1	85	4	85	405,343	9,698,704	
				5	408,051	9,699,257												5	40	5	40	408,051	9,699,257	
				6	408,010	9,698,440												5	40	6	40	408,010	9,698,440	
				7	407,756	9,699,958												1	85	7	85	407,756	9,699,958	
				8	409,948	9,699,647			X	①														
				9	406,650	9,700,200			X	①、③														

州	県	ID	村落名称	要請井戸本数	井戸番号	座標		他ドナープロジェクト	現地踏査		水質試験		物理探査		費用対効果		選定井戸										
						東経(m)	北緯(m)		判定	理由	判定	理由	判定	理由	判定	理由	判定	地質ゾーン	理想成功率(%)	小計	井戸	理想成功率(%)	東経	北緯			
△ ワノザ	Geita	112	Kameta	8	1	424,695	9,658,794									X	7	10	2								
					2	424,877	9,659,616													X	7	10					
					3	425,145	9,660,927													X	7	10					
					4	424,482	9,660,755								X	≤20											
					5	425,433	9,661,232															5	40	5	40	425,433	9,661,232
					6	428,052	9,658,482															1	85	6	85	428,052	9,658,482
					7	425,002	9,657,866		X	①																	
					8	423,000	9,659,250		X	①																	
					1	424,677	9,655,491								X	≥1000					X	7	10	1			
					2	424,761	9,654,711																				
3	425,678	9,654,976								X	≤20																
4	425,012	9,655,490													X	7	10										
5	421,816	9,654,909														5	40	5	40	421,816	9,654,909						
6	424,053	9,656,283								X	≤20																
7	424,653	9,657,088													X	7	10										
8	422,200	9,656,050						X	①																		
9	425,200	9,657,950						X	①、③																		
10	427,000	9,656,050						X	①、③																		
Geita	114	Nyashishima	5	1	418,518	9,658,189							X	≤20				2									
				2	418,565	9,657,207									X	≤20											
				3	419,255	9,655,772									X	≤20											
				4	420,444	9,658,490														5	40	4	40	420,444	9,658,490		
				5	421,244	9,658,602														5	40	5	40	421,244	9,658,602		
Geita	115	Bugogo	8	1	423,472	9,646,280											1	85	3	1	85	423,472	9,646,280				
				2	425,067	9,646,655												X	7	10							
				3	424,265	9,647,600									X	≤20											
4	425,805	9,647,999														5	40	4	40	425,805	9,647,999						
5	425,011	9,645,977														5	40	5	40	425,011	9,645,977						
6	424,991	9,646,723						X	⑤																		
7	423,175	9,645,616						X	①																		
8	426,685	9,647,150						X	①																		
Geita	116	Ikina	7	1	423,988	9,647,455											5	40	2	1	40	423,988	9,647,455				
				2	424,417	9,648,419									X	≤20											
				3	424,435	9,649,028									X	≤20											
				4	423,594	9,649,420																					
				5	424,561	9,650,014																					
				6	424,900	9,650,900						X	①、③														
				7	424,000	9,651,950						X	①、③														

州	県	村落		要請井戸本数	井戸番号	座標		他ドナープロジェクト		現地踏査		水質試験		物理探査		費用対効果		選定井戸							
		ID	名称			東経(m)	北緯(m)	判定	理由	判定	理由	判定	理由	判定	理由	判定	理由	地質ゾーン	想定成功率(%)	井戸	東経	北緯			
ムワンザ	Geita	117	Ibondo	13	1	387,378	9,667,206										5	40	1	387,378	9,667,206				
					2	388,747	9,666,699												5	40	2	388,747	9,666,699		
					3	390,726	9,665,030												1	85	3	390,726	9,665,030		
					4	390,699	9,666,443												1	85	4	390,699	9,666,443		
					5	392,589	9,665,733												1	85	5	392,589	9,665,733		
					6	391,742	9,664,124												X	≤20					
					7	391,513	9,666,943														1	85	7	391,513	9,666,943
					8	389,535	9,665,413														1	85	8	389,535	9,665,413
					9	387,295	9,666,214														5	40	9	387,295	9,666,214
					10	386,000	9,666,535					X	①												
					11	389,100	9,664,200					X	①												
					12	392,850	9,667,850					X	①、③												
					13	394,000	9,666,850					X	①、③												
Bunda		118	Mcharo	5	1	606,150	9,776,550										5	40	1	606,150	9,776,550				
					2	605,264	9,776,788											5	40	2	605,264	9,776,788			
					3	605,711	9,777,107											1	85	3	605,711	9,777,107			
					4	604,276	9,777,777											1	85	4	604,276	9,777,777			
					5	607,450	9,776,306					X	①												
Musoma		119	Stroririmba	8	1	632,675	9,810,114										4	75	1	632,675	9,810,114				
					2	633,150	9,809,606					X	F												
					3	632,363	9,812,129																		
					4	633,963	9,809,441																		
					5	637,827	9,809,787																		
					6	637,041	9,807,859																		
Musoma		120	Ryamisanga	8	7	635,085	9,810,450																		
					8	635,400	9,807,500																		
					1	618,956	9,826,602																		
					2	617,981	9,826,034																		
					3	618,041	9,825,099																		
					4	619,257	9,825,181																		
					5	622,050	9,824,750																		
					6	617,944	9,823,464																		
7	616,000	9,824,850					X	①、②																	
8	614,000	9,826,450					X	①、②																	
Musoma		121	Kisawene	11	1	602,902	9,818,031										5	40	1	602,902	9,818,031				
					2	603,583	9,816,055																		
					3	605,505	9,816,847																		
					4	605,041	9,814,912																		
					5	604,892	9,814,296																		
					6	604,223	9,814,630																		
					7	602,550	9,816,800					X	①、③												
					8	603,550	9,818,850					X	①、③												
					9	604,150	9,818,750					X	①、③												
					10	605,550	9,817,650					X	①、③												
					11	605,490	9,813,100					X	①、③												

州	県	村名	要請井戸本数	井戸番号	座標		他ドナープロジェクト		現地踏査		水質試験		物理探査		費用対効果		選定井戸												
					ID	名称	東経(m)	北緯(m)	判定	理由	判定	理由	判定	理由	判定	理由	判定	理由	判定	理由	地質ノーマン	理想成功率(%)	井戸	東経	北緯				
マラ	Musoma	122 Buguji	10	1	583,150	9,791,178							X	≤20					3										
				2	584,300	9,790,500															2	75	584,300	9,790,500					
				3	583,500	9,790,038															3	75	583,500	9,790,038					
				4	581,508	9,790,618										X	≤20												
				5	579,800	9,791,550										X	≤20												
				6	581,397	9,789,904																							
				7	581,970	9,791,589						X	①																
				8	580,900	9,787,250						X	①																
				9	582,100	9,787,900						X	①																
				10	584,950	9,789,450						X	①																
Musoma	123 Isaba	10	1	597,657	9,816,564														6										
			2	598,620	9,815,761															1	40	597,657	9,816,564						
			3	599,301	9,816,951															2	40	598,620	9,815,761						
			4	600,102	9,819,585															3	40	599,301	9,816,951						
			5	598,245	9,819,909															4	40	600,102	9,819,585						
			6	598,455	9,818,152															5	40	598,245	9,819,909						
			7	599,565	9,818,506										X	≤20				6	40	598,455	9,818,152						
			8	594,050	9,819,500					X	①																		
			9	596,080	9,822,090					X	①																		
			10	600,450	9,822,150					X	①																		
Tarime	124 Nyankunguru	9	1	664,624	9,841,290								X	≥1000					2										
			2	665,388	9,841,431																								
			3	669,210	9,843,279																								
			4	665,290	9,844,785																								
			5	665,150	9,846,650																								
			6	667,827	9,844,866																								
			7	666,990	9,846,200					X	①、②																		
			8	664,200	9,843,200					X	①																		
			9	664,990	9,840,000					X	①																		
			1	670,354	9,837,650										X	≤20													
Tarime	125 Kiwanji	5	2	670,951	9,838,598								X	≤20															
			3	671,070	9,840,270										X	≤20													
			4	670,603	9,841,952											X	≤20												
			5	669,559	9,839,046																								
Tarime	126 Bisarwi	8	1	642,598	9,842,074																								
			2	641,769	9,841,136																								
			3	641,413	9,839,307																								
			4	640,361	9,842,070																								
			5	639,201	9,841,992																								
			6	638,500	9,840,391																								
			7	641,126	9,840,559					X	⑤																		
			8	637,350	9,842,250					X	①																		
Rorya	127 Kisumwa	5	1	621,316	9,842,538																								
			2	620,570	9,840,911																								
			3	621,703	9,841,104																								
			4	622,405	9,843,502																								
			5	624,194	9,843,327																								

州	県	村名	要請井戸本数	井戸番号	座標		他ドナープロジェクト		現地踏査		水質試験		物理探査		費用対効果		選定井戸						
					東経(m)	北緯(m)	判定	理由	判定	理由	判定	理由	判定	理由	判定	地質ゾーン	想定成功率(%)	井戸	東経	北緯			
マラ	Rorya	128 Nyanlonge	5	1	609,737	9,865,950												4	1	609,737	9,865,950		
				2	609,920	9,866,341														2	609,920	9,866,341	
				3	610,679	9,866,302														3	610,679	9,866,302	
				4	608,826	9,866,051														4	608,826	9,866,051	
				5	609,950	9,863,790																	
	Rorya	129 Masike	11	1	618,032	9,857,055													3				
				2	615,867	9,855,795																	
				3	617,320	9,856,691															3	617,320	9,856,691
				4	616,799	9,855,148															4	616,799	9,855,148
				5	614,688	9,854,990																	
				6	617,300	9,856,000															6	617,300	9,856,000
Rorya	130 Bukama	11	7	615,850	9,857,000																		
			8	613,600	9,857,550																		
			9	618,650	9,858,300																		
			10	619,400	9,856,900																		
			11	618,800	9,855,700																		
			1	622,021	9,860,996															4	1	622,021	9,860,996
			2	620,197	9,862,733															2	620,197	9,862,733	
			3	620,101	9,861,936																		
			4	621,017	9,860,454															4	621,017	9,860,454	
			5	622,052	9,859,051															5	622,052	9,859,051	
			Rorya	131 Oliyoo	9	6	618,650	9,858,350															
7	618,990	9,860,000																					
8	622,000	9,863,950																					
9	622,000	9,862,400																					
10	624,900	9,863,800																					
11	623,300	9,861,150																					
1	613,804	9,844,399																		3			
2	614,200	9,843,248																					
3	613,111	9,841,923																					
4	614,958	9,837,516																					
5	613,742	9,838,295																					
6	614,305	9,842,800																					
7	615,150	9,814,950																					
8	615,450	9,838,350																					
9	612,850	9,837,400																					
Rorya	132 Tatwe	11	1	638,931	9,867,866																		
			2	638,117	9,868,010																		
			3	640,400	9,867,434																		
			4	641,900	9,866,700																		
			5	638,550	9,866,400																		
			6	639,165	9,865,239																		
			7	638,350	9,863,950																		
			8	641,450	9,863,600																		
			9	642,450	9,864,200																		
			10	640,080	9,868,450																		
			11	638,980	9,869,350																		

(9) 共同水栓施設からハンドポンプ井戸施設へ変更した村落

州	県	村落		要請井戸 本数	座標		費用対効果		選定井戸						
		ID	名称		東経(m)	北緯(m)	判定	地質ゾー ン	理想成功 率(%)	小計	井戸	理想成功 率(%)	東経	北緯	
ムワンザ	Misungwi	201	Busongo		1	494,000	9,657,000		5	40	5	1	40	494,000	9,657,000
					2	493,400	9,654,450		5	40	2	40	493,400	9,654,450	
					3	492,500	9,653,450		5	40	3	40	492,500	9,653,450	
					4	491,150	9,652,500		4	75	4	75	491,150	9,652,500	
					5	490,200	9,656,800		4	75	5	75	490,200	9,656,800	
	Misungwi	202	Ngaya		1	487,700	9,685,300		1	85	5	1	85	487,700	9,685,300
					2	488,600	9,685,900		1	85	2	85	488,600	9,685,900	
					3	489,000	9,685,000		5	40	3	40	489,000	9,685,000	
					4	488,900	9,683,450		5	40	4	40	488,900	9,683,450	
					5	490,100	9,683,950		5	40	5	40	490,100	9,683,950	
	Sengerema	203	Buswelu		1	436,800	9,711,800		5	40	3	1	40	436,800	9,711,800
					2	434,450	9,712,000		5	40	2	40	434,450	9,712,000	
					3	431,800	9,711,700		1	85	3	85	431,800	9,711,700	
	Sengerema	204	Nyamiswi		1	442,800	9,740,900		5	40	4	1	40	442,800	9,740,900
					2	443,300	9,741,100		5	40	2	40	443,300	9,741,100	
					3	443,200	9,740,100		5	40	3	40	443,200	9,740,100	
					4	443,600	9,739,200		5	40	4	40	443,600	9,739,200	
	Sengerema	205	Nyakasasa		1	444,250	9,739,100		1	85	5	1	85	444,250	9,739,100
					2	443,600	9,737,900		1	85	2	85	443,600	9,737,900	
					3	442,500	9,737,900		5	40	3	40	442,500	9,737,900	
4					443,000	9,737,400		1	85	4	85	443,000	9,737,400		
5					443,500	9,736,800		5	40	5	40	443,500	9,736,800		
Sengerema	206	Nyakahako		1	461,200	9,729,600		1	85	6	1	85	461,200	9,729,600	
				2	461,300	9,728,800		5	40	2	40	461,300	9,728,800		
				3	462,450	9,728,600		1	85	3	85	462,450	9,728,600		
				4	462,500	9,728,000		5	40	4	40	462,500	9,728,000		
				5	463,150	9,728,250		1	85	5	85	463,150	9,728,250		
				6	463,500	9,729,300		5	40	6	40	463,500	9,729,300		
Kwimba	207	Hungmalwa		1	532,000	9,649,600		1	85	3	1	85	532,000	9,649,600	
				2	531,800	9,648,000		5	40	2	40	531,800	9,648,000		
				3	533,550	9,648,500		5	40	3	40	533,550	9,648,500		
Ukerewe	208	Bukonyo		1	492,000	9,783,250		5	40	2	1	40	492,000	9,783,250	
				2	492,400	9,783,500		5	40	2	40	492,400	9,783,500		
Ukerewe	209	Namilemba		1	493,000	9,782,900		5	40	3	1	40	493,000	9,782,900	
				2	493,250	9,782,000		5	40	2	40	493,250	9,782,000		
				3	493,500	9,781,500		5	40	3	40	493,500	9,781,500		
Musoma	210	Saragana		1	576,920	9,793,185		4	75	5	1	75	576,920	9,793,185	
				2	577,950	9,792,957		4	75	2	75	577,950	9,792,957		
				3	578,050	9,792,440		4	75	3	75	578,050	9,792,440		
				4	575,000	9,792,000		4	75	4	75	575,000	9,792,000		
				5	577,800	9,789,900		4	75	5	75	577,800	9,789,900		
				41					41						