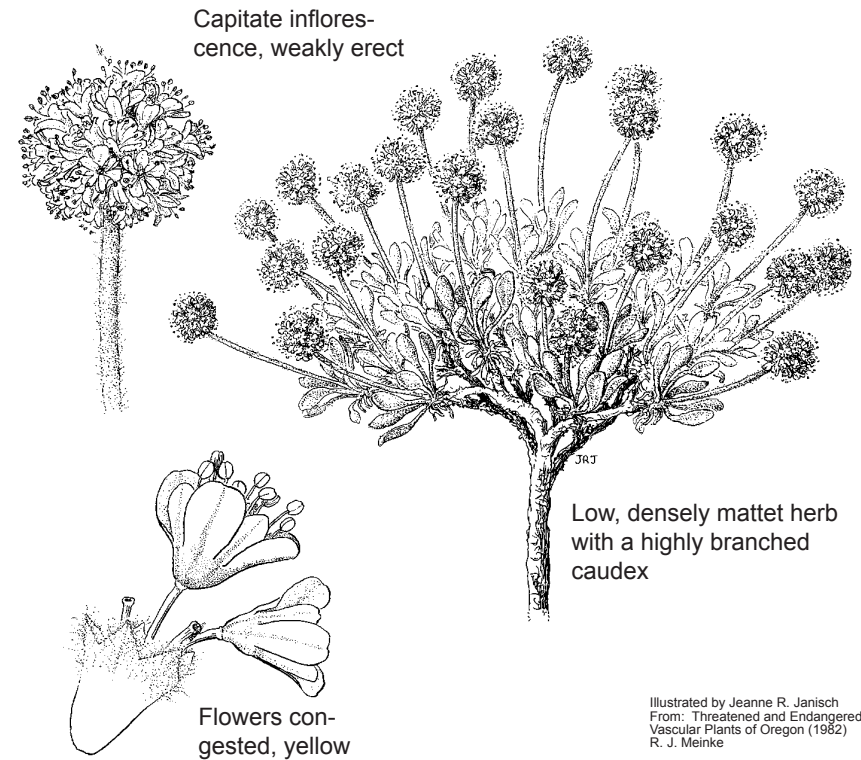
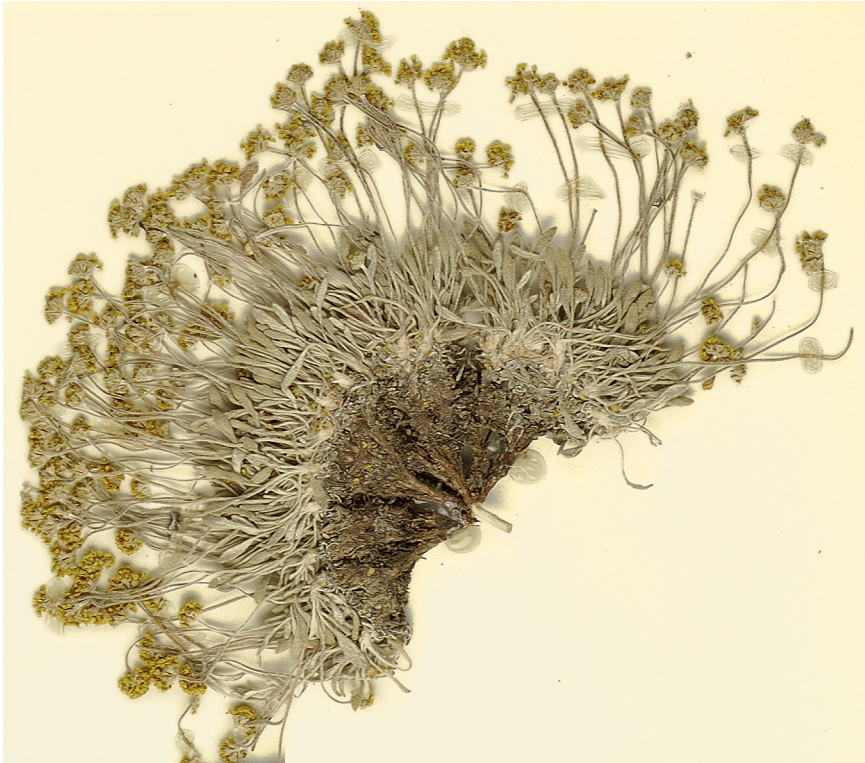


Eriogonum crosbyae

Polygonaceae

Crosby's buckwheat



Illustrated by Jeanne R. Janisch
From: Threatened and Endangered
Vascular Plants of Oregon (1982)
R. J. Meinke

Low, densely matted caespitose herb with a highly branched caudex, 10-25 cm across, arising from a woody taproot. Leaves basal, persistent, oblanceolate to narrowly elliptic, 5-15 mm long, 1.5-4 mm wide, densely white-tomentose on both surfaces, apex acute, base cuneate, margin entire; petiole 0.3-1 cm long. Inflorescence capitate; head 3-10 mm wide; scapes floccose, weakly erect, 1.5-7 cm long. Involucres 5-7, congested, campanulate, 2-3 mm long, 2-2.5 mm wide, with 5 teeth, floccose without, glabrous within. Flowers congested, yellow; tepals with greenish-yellow midribs, 1.5-2 mm long, glabrous, minute glands on midrib within, bases of mature tepals reddish. Fruit an achene, light brown, 2 mm long, glabrous.

Lookalikes

Eriogonum prociduum
Eriogonum cusickii

differs from featured plant by

its glabrous scapes
its branched inflorescence

best survey times
J|F|M|A|M|J|J|A|S|O|N|D

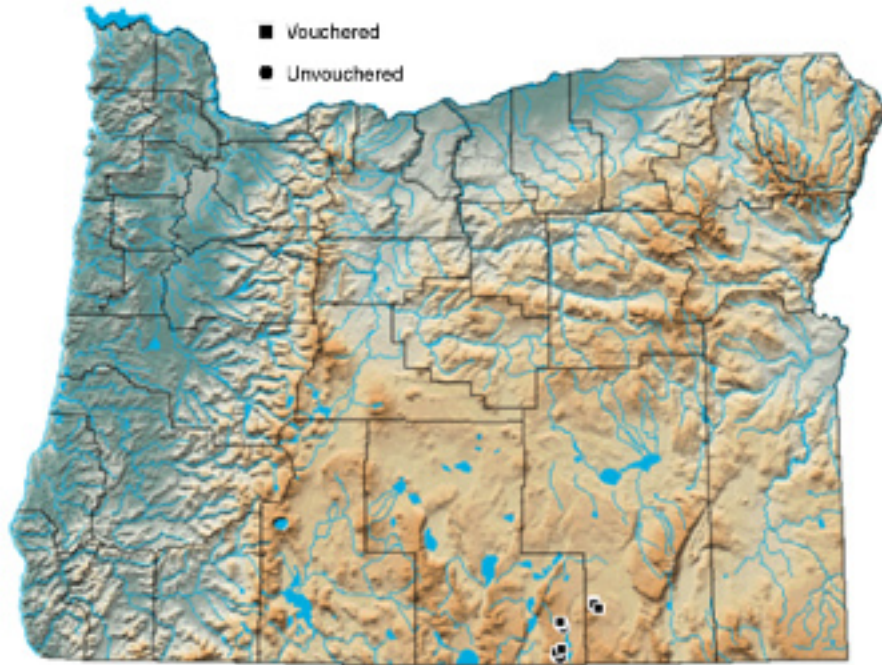


Eriogonum crosbyae Reveal

Crosby's buckwheat

PLANTS symbol: ERCR10

October 2006 status Federal:SOC; Oregon:LT; ORNHIC:S2, List 1



Distribution: Southeast Lake Co. and southwest Harney Co.

Habitat: Tuffaceous sandstone and pumice outcrops.

Elevation: 1590 - 1710 m

Best survey time (in flower): late May – early August

Associated species:

Phacelia scopulina (Debeque phacelia)

Artemisia tridentata (Sagebrush)

