



Gerald D. Carr

***Lilium occidentale***

Liliaceae  
Western lily



Barbara & Glenn Halliday



Gerald D. Carr



Robert Mansfield

best survey times  
J | F | M | A | M | J | J | A | S | O | N | D

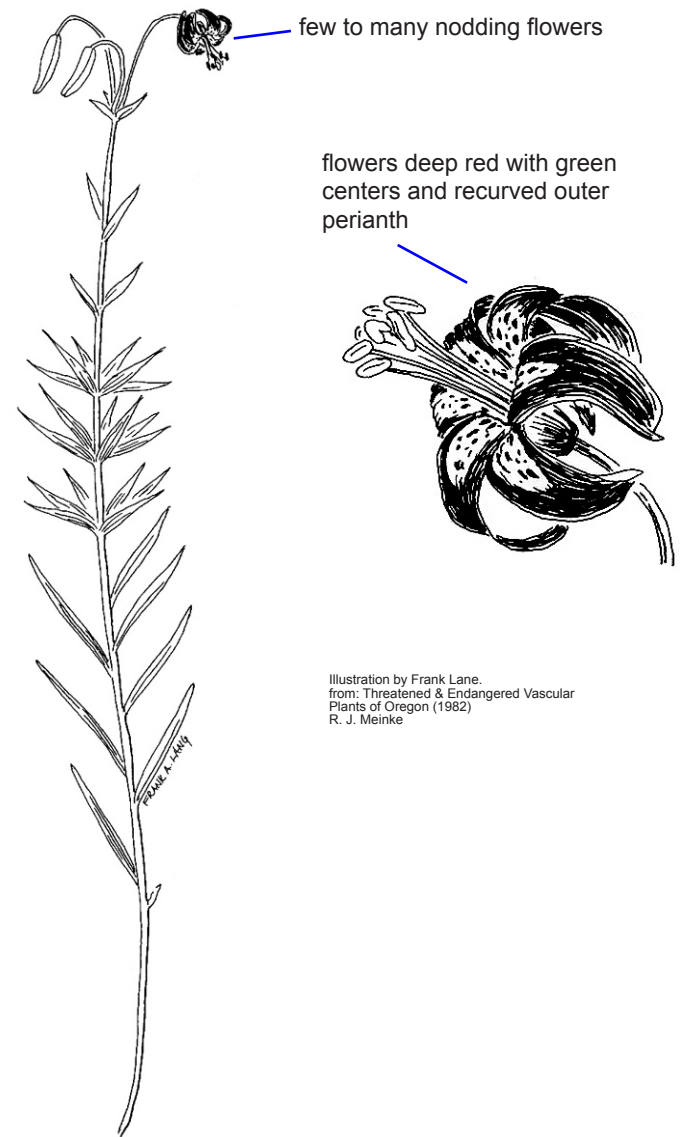


Illustration by Frank Lane.  
from: Threatened & Endangered Vascular  
Plants of Oregon (1982)  
R. J. Meinke

**Plant** is an herbaceous perennial from a bulb. **Stems** slender, 40 to 180 cm tall. **Leaves** scattered or usually whorled, dark green, lanceolate, with acuminate or acute tip. **Inflorescence** few to many nodding flowers on long, 6-12 cm pedicels, flower color is deep red to orange, grading to yellow-green or green at the base and throat, center is dotted with purple spots in the throat, perianth segments recurved; anthers about 0.5 cm long, surrounding the pistil, style shorter than the stamens; flowers lacking fragrance. **Fruit** is a broadly ellipsoid to subspherical capsule, with rounded seeds.

**Lookalikes**  
*Lilium*

**differs from featured plant by**  
Featured plant may be distinguished from other *Lilium* species by its wet coastal habitat, true bulb, lack of fragrance, recurved outer perianth, nodding flowers, and its deep red flowers with a green center and base.

## *Lilium occidentale* Purdy

Western lily

PLANTS symbol: LIOC2

August 2019 status Federal:LE; Oregon:LE; ORBIC: List 1



**Distribution:** Immediate coastal areas from Coos and Curry Counties, Oregon to Humboldt County, California.

**Habitat:** Poorly drained, organic soils on the edges of coastal bogs.

**Elevation:** 0—100 m

**Best survey time (in flower):** Mid-June to Mid-August

### **Associated species:**

*Drosera* (Sundew)

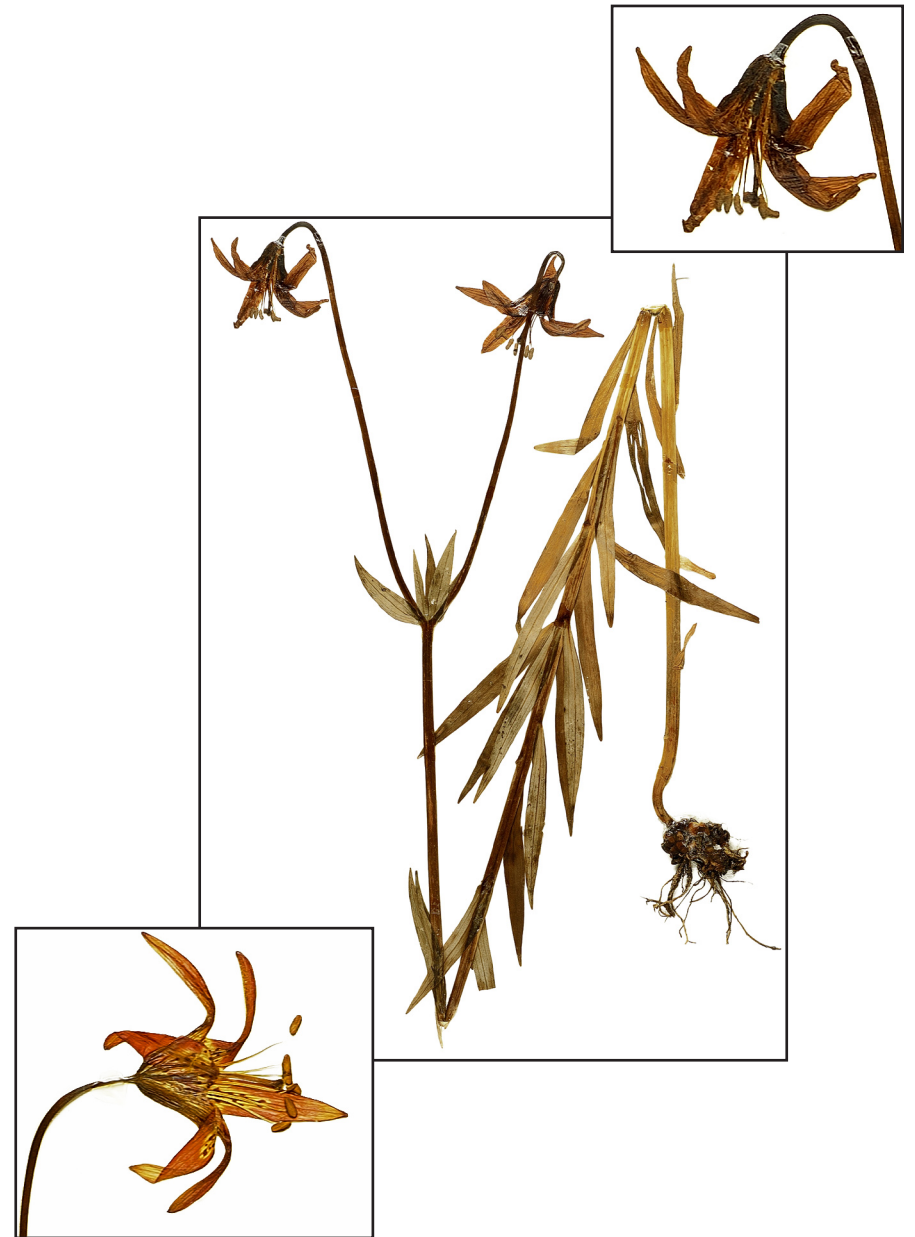
*Rhododendron macrophyllum* (Pacific rhododendron, western rhododendron)

*Vaccinium ovatum* (Evergreen blueberry)

*Rhododendron groenlandicum* (Bog Labrador tea)

*Alnus rubra* (Red alder, Oregon alder)

*Lilium columbianum* (Columbia lily, Oregon lily)



Oregon Flora

<https://oregonflora.org>

Published August 2019