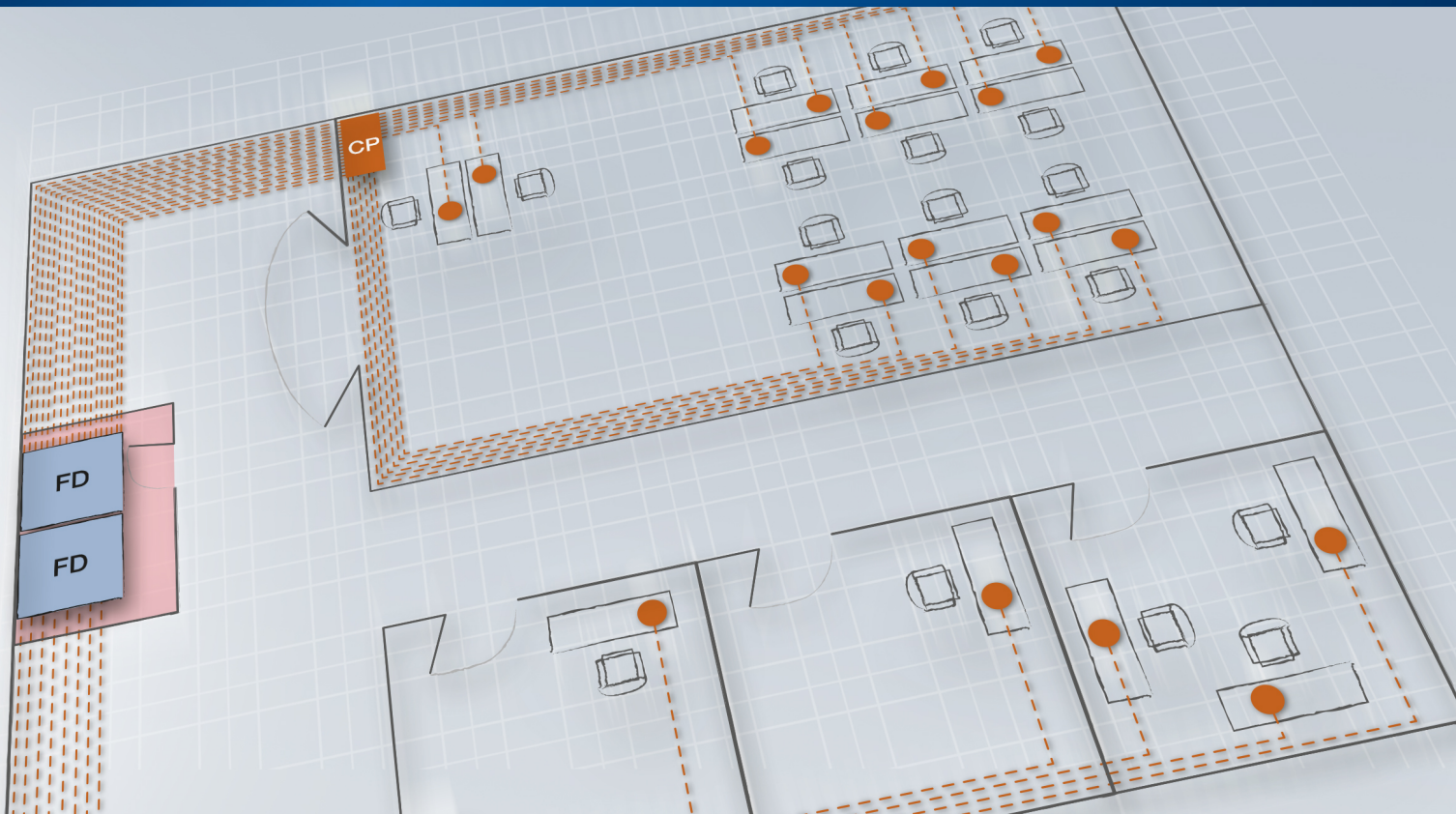


PreCONNECT® flexNET

PRODUCT INFORMATION



Applications:

PreCONNECT® flexNET is the name given to a modern cabling system for the LAN infrastructure of buildings and office environments that meets the growing demand for flexibility in workplace design.

System consisting of:

- Range of planning and installation services
- State-of-the-art distribution components
- Fiber optic cables pre-assembled on one or two sides with up to 48 fibers
- High-quality copper cabling
- Various 19" panel systems for splice or patch applications
- Wall and free-standing distributors as splice and distribution variants
- Wall and underfloor distributors acting as passive consolidation points
- Connecting sockets and patchcords
- Useful accessories

Characteristics:

End-to-end, fully harmonized and exceptionally flexible cabling system for cabling buildings and offices

- Forward-looking fiber optic technology
- High-quality copper cabling
- Time- and cost-efficient LAN cabling thanks to the use of cables pre-assembled on one or two sides depending on local requirements to offer approx. 15% time saving at the installation site.
- Standards-compliant planning and implementation
- Thanks to the gel-free cables, it is not necessary to clean the fibers when splicing on-site and work is therefore more efficient
- The cables are available in various fire classes (CPR)
- Indoor cables for permanent installation are available ex stock in the highest available fire protection class (B2)

The benefits at a glance:

- Increased flexibility in the spatial layout of workplaces
- Disruption-free extension and restructuring during ongoing business operation possible through the use of passive consolidation points in the tertiary sector close to the endpoints.
- A secure investment as the passive components can be moved to a new site and reused in the event of a relocation
- Time-saving, cost-effective LAN cabling with single and double-sided pre-assembly and cabling design created by experts
- Turnkey solution, planning, installation and documentation from a single source

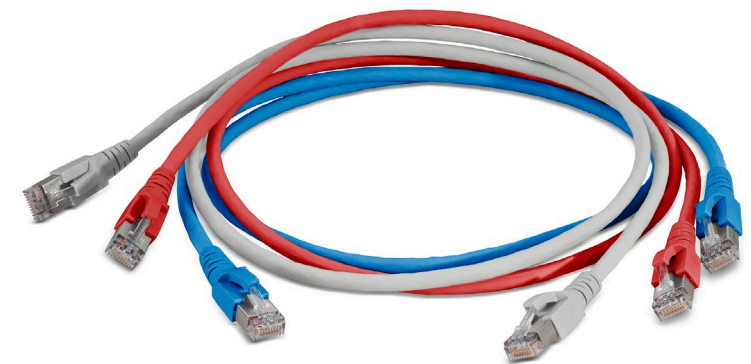


PreCONNECT® building cabling system

The PreCONNECT® isoNET, PreCONNECT® flexNET, PreCONNECT® smartNET systems are modern, standards-compliant, extendable cabling systems designed to provide a robust, high-performance infrastructure with various levels of flexibility to respond to the challenges brought by the frequent changes that characterize the modern working world.

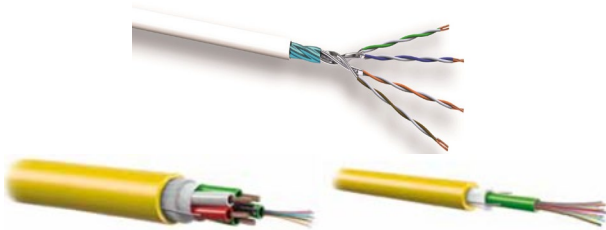
- In this context, PreCONNECT® isoNET is a conventional cabling solution with state-of-the-art distribution components and, in some cases, pre-assembled fiber optic and copper cabling.
- PreCONNECT® flexNET brings passive distributors (passive copper consolidation points) very close to the endpoints in order to be able to respond optimally to any local redesign in the enterprise's operating processes.
- PreCONNECT® smartNET boosts performance and flexibility by routing optical fibers directly into the office distributors, meaning that it is only here that the layer 2 network is distributed to the local endpoints over very short line lengths.

Contents	Page
Overview	2-4
Fiber optic splice solution	5 - 9
Fiber optic distribution solution	10 - 11
MTP®/MPO application	12
Copper solution	13 - 17
Racks & distributors	18 - 21
Accessories	22 - 24



PreCONNECT® flexNET cabling system

Bulk cabling, fiber optic and copper



19" Cu panels



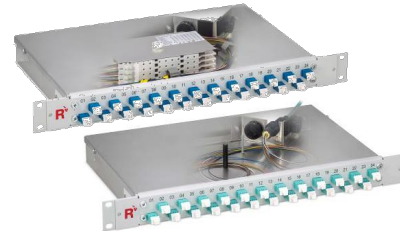
RJ45 sockets



PreCONNECT® flexNET half-trunk - trunk cables



19" 1HU splice and distribution panel
Fixed installation



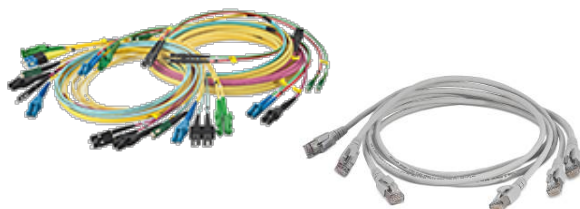
Passive Consolidation Point



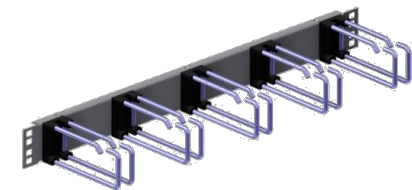
Accessories



Patchcords
Fiber optic and copper



Highly modular SMAP-G2 19" distribution panel
with MTP®/MPO modules



PreCONNECT® flexNET cabling system

Fiber optic splice solution

Other cable variants, e.g. with OM5 or OM2 fibers are available on request

Fiber optic indoor cables

Type: I-B(ZN)BH XXXX/125µm JF (JF = Gel-free)	12 fibers OS2	024A0014G657A1
Jacket: FRNC-LSZH non-metallic	24 fibers OS2	024A0012G657A1
Rodent protection	12 fibers OM3	024A0015OM3BI
CPR B2ca	24 fibers OM3	024A0013OM3BI
	12 fibers OM4	024A0015OM4BI
	24 fibers OM4	024A0013OM4BI



Fiber optic indoor cables

Type: I-F(ZN)H XXXX/125µm	12 fibers OS2	037A0004G657A1
Jacket: FRNC-LSZH	24 fibers OS2	037A0016G657A1
3mm	12 fibers OM3	037A0001OM3BI
	24 fibers OM3	037A0004OM3BI
	12 fibers OM4	037A0001OM4BI
	24 fibers OM4	037A0004OM4BI



Fiber optic indoor cables

Type: I-F(ZN)H(ZN)H XXXX/125µm	12 fibers OS2	037A0005G657A1
Jacket: FRNC-LSZH	12 fibers OM3	037A0002OM3BI
3/4.5m	12 fibers OM4	037A0002OM4BI
CPR Dca		

PreCONNECT® flexNET cabling system

Fiber optic splice solution

Fiber optic installation cables, universal cables

Type: U-DQ(ZN)BH XX XX/125µm	12 fibers OS2	030A0010G657A1
Jacket: FRNC-LSZH with rodent protection	24 fibers OS2	030A0016G657A1
	48 fibers OS2	030A0025G657A1
	12 fibers OM3	030A0110OM3BI
	24 fibers OM3	030A0116OM3BI
	48 fibers OM3	030A0125OM3BI
	12 fibers OM4	030A0110OM4BI
	24 fibers OM4	030A0116OM4BI
	48 fibers OM4	030A0125OM4BI



Fiber optic installation cables, outdoor cables

Type: A-DQ(ZN)B2Y XX XX/125µm	12 fibers OS2	010A0010
Jacket: PE with rodent protection	24 fibers OS2	010A0016
	48 fibers OS2	010A0025
	12 fibers OM3	010A0110OM3BI
	24 fibers OM3	010A0116OM3BI
	12 fibers OM4	010A0110OM4BI
	24 fibers OM4	010A0116OM4BI



PreCONNECT® flexNET cabling system

Fiber optic splice solution

19" splice panel, 1 HU LC duplex

RAL 7035, panel for fixed installation
Aluminium body

Ready for splicing with splice cassettes with
pigtail fibers and fiber optic adapters
pre-assembled ex works

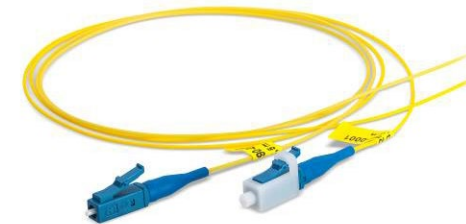
12 fibers OS2	231L0353
24 fibers OS2	231L0355
48 fibers OS2	231L0358
12 fibers OM3	231L1323OM3
24 fibers OM3	231L1325OM3
48 fibers OM3	231L1328OM3
12 fibers OM4	231L1323OM4
24 fibers OM4	231L1325OM4
48 fibers OM4	231L1328OM4



Fiber optic buffered fiber pigtail

Connector system: LC, OS2
Cable type: I-VH 1 X/125µm,
Buffered fiber
Length: 2 m

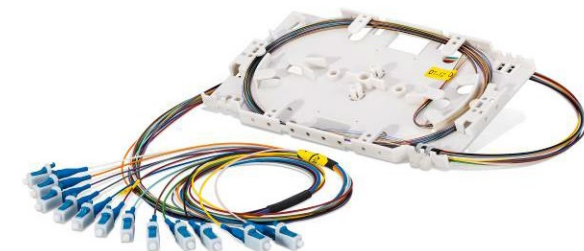
9µm OS2	087L1743
50µm OM3	087L1744OM3
50µm OM4	087L1744OM4



Factory-assembled splice cassette

with 12 fibers X/125µm, buffered fiber
Connector system: LC-Simplex
Length: 2 m
without splice accessories

12 fibers OS2	117L7000G657A1
12 fibers OM3	117L7001OM3
12 fibers OM4	117L7001OM4



PreCONNECT® flexNET cabling system

Universal panel 360x254x111 mm

Splice panel, patchfield inside
 Connector system: LCD/LCD
 Plastic, colour: RAL 7035 light grey

24 fibers OS2	118L4302
48 fibers OS2	118L4303
24 fibers OM3	118L4304OM3
48 fibers OM3	118L4305OM3
24 fibers OM4	118L4304OM4
48 fibers OM4	118L4305OM4



Mini-universal box splice panel

Connector system: LC duplex
 incl. splice cassette and set of pigtailed
 without splice holders and protectors
 Plastic, RAL 7035 light grey

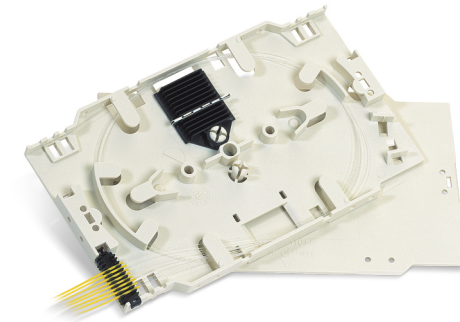
12 fibers OS2	114L0681
12 fibers OM3	114L0782OM3
12 fibers OM4	114L0782OM4



PreCONNECT® flexNET cabling system

Splice solution for fiber optics

Crimp splice protector	111A0001
Crimp splice protector holder	111A0000
Shrink splice protector	111A0003
Shrink splice protector holder	111A0002
Splice cassette	111A0008
Cover for splice cassette	111A0015
Strain relief for 900µm buffered fiber	111A0009
Cable glands PG13.5 for cable diameters 5 – 9 mm	111A0426
Cable glands PG16 for cable diameters 7 – 12 mm	111A0427
Cable glands PG21 for cable diameters 9 – 16 mm	111A0402
Screw plug PG13.5	111A0430
Screw plug PG16	111A0431
Screw plug PG21	111A0432

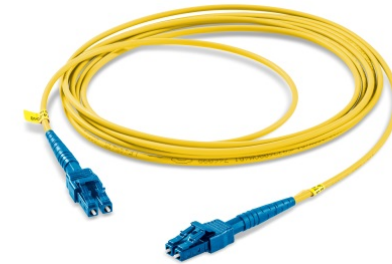


PreCONNECT® flexNET cabling system

Fiber optic distribution solution

Fiber optic duplex patchcords

Connector systems: LC-Compact/LC-Compact	OS2, 1 m	087L6600G657A1-1000
Cable type: I-V(ZN)H2,FRNC-LSZH	OS2, 2 m	087L6600G657A1-2000
Round cable 2.8 mm	OM3, 1 m	087L6601OM3-1000
	OM3, 2 m	087L6601OM3-2000
	OM4, 1 m	087L6601OM4-1000
	OM4, 2 m	087L6601OM4-2000

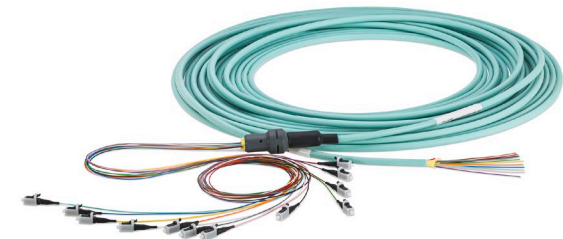


Fiber optic duplex patchcords

Connector systems: LC-Compact/LC-Compact	OS2, 5 m	087L6610G657A1-5000
Cable type: I-V(ZN)H(ZN)H 2,FRNC-LSZH	OM3, 5 m	087L6613OM3-5000
Double-jacket round cable 2.8/ 5.0 mm	OM4, 5 m	087L6613OM4-5000

PreCONNECT® Eco half-trunk

Cable type: I-V(ZN)H 12x0.9	12 fibers OS2	032L0904Halbtrunk
Mini breakout	24 fibers OS2	032L0905Halbtrunk
Trunk cable pre-assembled on both sides available on request.	12 fibers OM3	032L0535OM3Halbtrunk
	24 fibers OM3	032L0538OM3Halbtrunk
	12 fibers OM4	032L0535OM4Halbtrunk
	24 fibers OM4	032L0538OM4Halbtrunk



PreCONNECT® flexNET cabling system

Fiber optic distribution solution

19" PreCONNECT® distribution panel

<ul style="list-style-type: none"> • 1 HU, RAL 7035, panel for fixed installation • Aluminium body • Connector system: LC duplex 	12 fibers OS2	231L0173
	24 fibers OS2	231L0175
	48 fibers OS2	231L0177
	12 fibers OM3	231L1293OM3
	24 fibers OM3	231L1295OM3
	48 fibers OM3	231L1298OM3
	12 fibers OM4	231L1293OM4
	24 fibers OM4	231L1295OM4
	48 fibers OM4	231L1298OM4



Universal panel 360x254x111 mm distribution panel, patchfield inside

<ul style="list-style-type: none"> • Connector system: LCD/LCD • Plastic, colour: RAL 7035 light grey 	24 fibers OS2	118L4002
	48 fibers OS2	118L4003
	24 fibers OM3	118L4006OM3
	48 fibers OM3	118L4007OM3
	24 fibers OM4	118L4006OM4
	48 fibers OM4	118L4007OM4



Mini-universal box distribution panel

<ul style="list-style-type: none"> • Plastic, RAL 7035 light grey • Connector system: LC duplex 	12 fibers OS2	114L0481
	12 fibers OM3	114L0582OM3
	12 fibers OM4	114L0582OM4



PreCONNECT® flexNET cabling system

MTP®/MPO application:

Patch cord 12F, MTP® half-trunk

- 3.0/4.5 mm
- Trunk cable pre-assembled on both sides available on request.

12 fibers OM3

080L0766OM3Halbtrunk

12 fibers OM4

080L0766OM4Halbtrunk



Breakout 24F, MTP®12f half-trunk

- I-F(ZN)HH2x12, square
- Trunk cable pre-assembled on both sides available on request.

24 fibers OM3

037L0101OM3Halbtrunk

24 fibers OM4

037L0101OM4Halbtrunk



SMAP-G2 MTP® module 1/4

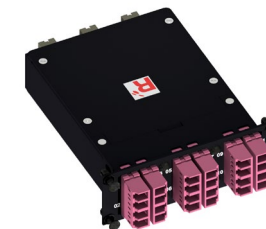
- 24 fibers
- Front 6 LC-Quad
- Back 2 MTP®-12F (male)
- RAL 9005 black

24 fibers OM3

170L2002OM3

24 fibers OM4

170L2002OM4



SMAP-G2 empty panel 1 HU

- Empty panel for part front plates or MTP® modules
- RAL 9005 black

171L0001



PreCONNECT® flexNET cabling system

Copper solution

Rosenberger OSI cable S/FTP cat.7

4x2xAWG 23/1

1000MHz

FRNC-LSZH

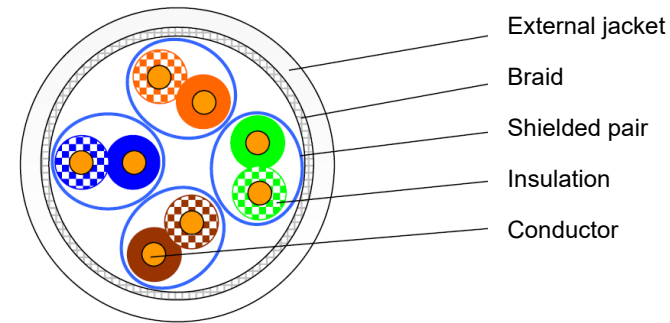
Colour: white

CPR: Dca

Maximum supplied length per VPE: 1000 m

Order numbers:

- 1000 m disposable drum: 047A0019-1000
- 500 m disposable drum: 047A0019-500
- 305 m REELEX Box 20-inch 047A0019-300



Rosenberger OSI cable F/FTP cat.6A

4x2xAWG 23/1

500MHz

FRNC-LSZH

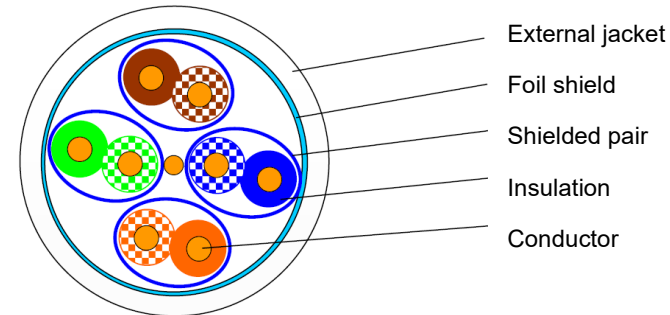
Colour: White

CPR: Dca

Maximum supplied length per VPE: 1000 m

Order numbers:

- 1000 m disposable drum: 047A0022-1000
- 500 m disposable drum: 047A0022-500
- 305 m REELEX Box 20-inch 047A0022-300



Rosenberger OSI cable F/UTP cat. 6A

4x2x AWG 23/1

500MHz

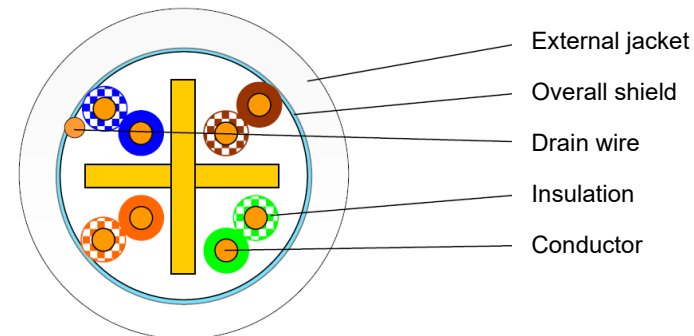
FRNC-LSZH

Colour: white

CPR: Dca

Order numbers:

- 1000 m disposable drum: 047A0025-1000
- 500 m disposable drum: 047A0025-500
- 305 m REELEX Box 20-inch 047A0025-300



PreCONNECT® flexNET cabling system

Copper solution

19" copper panel to accommodate 24 Keystone modules 0.5 HU:

Material: Stainless steel
Depth: 100 mm

Order number: 800A0220



19" copper panel to accommodate 24 Keystone modules 1 HU:

Material: Powder-coated sheet steel
Depth: 150 mm

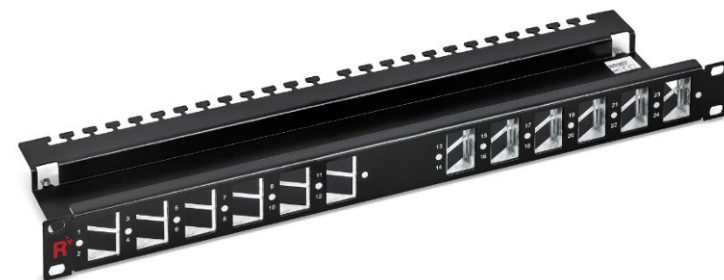
Order numbers:
RAL 7035 light grey: 800A0213
RAL 9005 black: 800A0214



19" copper panel to accommodate 24 Keystone modules, 30° external cable routing, 1 HU:

Material: Powder-coated sheet steel
Depth: 120 mm

Order numbers:
RAL 7035 light grey: 800A0219
RAL 9005 black: 800A0218



PreCONNECT® flexNET cabling system

Passive copper consolidation point:

Underfloor consolidation point to accommodate max. 24 Keystone modules:

Material: Powder-coated sheet steel
 Dimensions (H x D): 45 x 300 mm
 incl. 1 HU 10"/19" patchfield 12/24 RJ45 sockets
 incl. label strips

Order numbers:

10" max. 12x RJ45, RAL 7035 light gray:	800A0222
10" max. 12x RJ45, RAL 9005 black:	800A0224
19" max. 24x RJ45, RAL 7035 light gray:	800A0226
19" max. 24x RJ45, RAL 9005 black:	800A0228



Desk consolidation point to accommodate max. 12 Keystone modules:

Material: Hot-dip galvanized sheet steel
 Dimensions (H x W x D): 45 x 112
 incl. patchfield for 4/6/8/12 RJ45 sockets
 incl. label strip

Depth: 150 mm

Order numbers:

4x RJ45 RAL 7035 light gray:	800A0232
6 x RJ45 RAL 7035 light gray:	800A0234
8x RJ45 RAL 7035 light gray:	800A0236
12 x RJ45 RAL 7035 light gray:	800A0238



PreCONNECT® flexNET cabling system

Copper solution:

RJ45 Keystone module, cat. 6A screened:

- For AWG24-22 solid wires
- ISO/IEC 11801 and DIN EN 50173-1
- PoE+ DIN IEC 60512-99-011:2013 and DIN IEC 60512-9-3:2010
- Zinc die-casting, silver
- With dust protection flap
- GHMT PVP certificate no.: z4686a-xx-D

Order number: 800A0002

RJ45 Keystone module, cat. 6 unshielded:

Suitable for AWG26-22 solid wires, black plastic, ivory on request

Order number: 800A0005

RJ45 Keystone module, cat. 6A unshielded:

Suitable for AWG26-22 solid wires, black plastic, ivory on request

Order number: 800A0006

LC-duplex adapters in Keystone adapter frame:

Order numbers:

OM4 violet: 120A0361OM4

SM blue: 120A0360



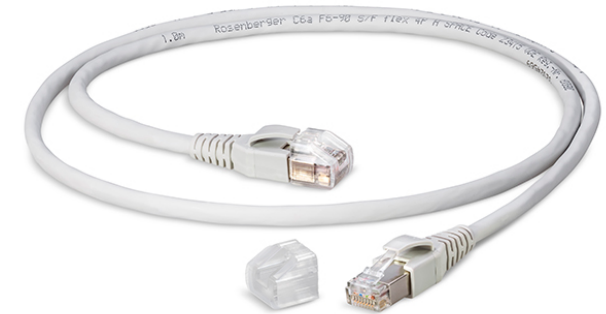
PreCONNECT® flexNET cabling system

Copper solution:

RJ45 patchcords:

RJ45, patchcord, cat. 6A screened:

Cat. 6A ISO/IEC, allocation 1:1, GHMT PVP certificate no.: z4826a-xx-D
 RJ45 connector screened on both sides with 2-component kink protection with engaging lever protection and protective cap
 Cable type: Cat.7, S/FTP, flex, 4 PiMF AWG27/7, up to 900 MHz, FRNC-LSZH
 Colour: grey
 Other lengths, colours and types available on request



Lengths	Order numbers
1 metre	820A1019M-1
2 metres	820A1019M-2
3 metres	820A1019M-3
5 metres	820A1019M-5
10 metres	820A1019M-10

RJ45, patchcord, cat. 6 unscreened:

Cat. 6 ISO/IEC, allocation 1:1
 RJ45 connector unscreened on both sides
 Cable type: Cat.6 U/UTP 4x2xAWG24/7, FRNC-LSZH
 Colour: grey
 Other lengths, colours and types available on request



Lengths	Order numbers
1 metres	820A0978M
2 metres	820A0979M
3 metres	820A0980M
5 metres	820A0981M
10 metres	820A0982M

PreCONNECT® flexNET cabling system

Racks & distributors

Racks: Central distributor IP 20:

- Disassemblable steel section rack frame
- Two lateral door inserts with locking mechanism
- Front and back perforated sheet door with three-point locking (free perforated sheet cross-section 80%)
- Possibility of installing a profile half cylinder lock
- 19" level 42 HU, front and back
- Top with cable passage capability and/or installation of fan module
- Base plinth provided separately
- Cover plates in floor area, removable for cable insertion
- For W=800 mm: Metal cable clips 66 mm x 125 mm at front 19" level (set=10 items)
- Earthing set (mounted)
- Set of M5 screws (50 items)

Surface:

Cladding parts/plinth: painted RAL 7035 light grey,
Design sections: painted RAL 3002 crimson red, other colours on request

Type of delivery:

Fully assembled, plinth provided separately

RAL 7035 light grey: 142A5001



PreCONNECT® flexNET cabling system

Racks & distributors

Floor distributor: 19" free-standing distributor

- Developed for flexible use in the office environment
- Optimum, rapid access thanks to the removable cladding parts
- Stable, welded frame construction
- Panel combination: D=700 mm, W=600 mm
- Pre-perforated areas for the insertion of cables in the top and base sections
- Possibility of housing a fan module in the top and base sections
- Two-way door hinges
- Doors with swivel handle, possibility of incorporating DIN profile half cylinder locks
- Cover and side panels with turnbuckle-type fast-locking mechanisms
- Many different possible configurations
- Large range of accessory parts

Technical information

Material: Sheet steel, Aluminium cover

Surface: Powder-coated, RAL 7035 light grey

Side panels in RAL 7037 dust-grey

Type of delivery:

Assembled

9 HU RAL 7035 light grey 142A5011

15 HU RAL 7035 light grey 142A5012

19 HU RAL 7035 light grey 142A5013



PreCONNECT® flexNET cabling system

Racks & distributors

Floor distributor: Wall distributor

- Protection type IP 54
- Visually attractive panel
- Space-saving construction
- Stable basic construction
- 2 doors with swivel handle lock and three-point locking
- Integrated viewing window on one side
- Removable front cover
- Doors with 180°-hinges for optimum accessibility
- Profile half cylinder lock: Two-way key bit 5 mm
- Integrated cable flange plates
- Installation dimensions as per IEC 60297-3-100
- Integrated outlet filter (IP 54) for fan installation

LAN wall distribution panel, 4 HU

Dimensions: H=230 mm, W=506 mm, D=536 mm

With 19" level, 4 HU, aligned vertically with the supporting wall.

4 HU RAL 7035 light grey 142A5021

LAN wall distribution panel, 6 HU

Dimensions: H=360 mm, W=557 mm, D=636 mm

With 19" level, 6 HU, aligned vertically with the supporting wall.

6 HU RAL 7035 light grey 142A5022



PreCONNECT® flexNET cabling system

Racks & distributors

Floor distributor: Wall distributor 9-19 HU

- Developed for flexible use in the office environment
- Optimum, rapid access thanks to the removable cladding parts
- Stable, welded frame construction
- Panel combination: D=400 mm, W=600 mm
- Pre-perforated areas for the insertion of cables in the top and base sections
- Possibility of housing a fan module in the top and base sections
- Two-way door hinges
- Doors with swivel handle, possibility of incorporating DIN profile half cylinder locks
- Cover and side panels with turnbuckle-type fast-locking mechanisms
- Many different possible configurations
- Large range of accessory parts

Technical information

Material: Sheet steel, Aluminium cover

Surface: Powder-coated, RAL 7035 light grey

Side panels in RAL 7037 dust-grey

Type of delivery:

Assembled

9 HU RAL 7035 light grey 142A5023

15 HU RAL 7035 light grey 142A5024

19 HU RAL 7035 light grey 142A5025



PreCONNECT® flexNET cabling system

Accessories:

Universal cable support for PreCONNECT® square interface

111L0650



For supporting cables of all types in the “PreCONNECT® way”,
Tool-free installation with simple insertion.
Suitable for cable diameters from 6 mm to 18 mm

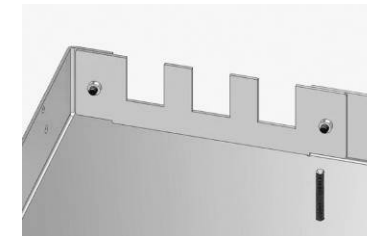
Support for 6 cable glands up to PG 16

111L0417



Support for 6 PreCONNECT® trunks

111L0425



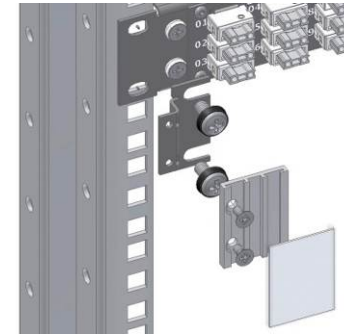
PreCONNECT® flexNET cabling system

Accessories:

19" 1 HU labelling field

171A0002

- Powder-coated steel sheet, RAL 9005 black



19" 1 HU patchcord guide

111A0450

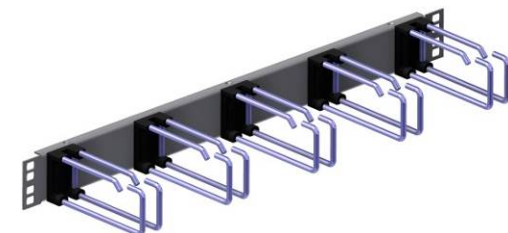
- Powder-coated steel sheet, RAL 7035 light grey
- Cable clip, PA black, L=56 mm



19" 1 HU patchcord guide

111A0469

- Powder-coated steel sheet, RAL 7035 light grey
- Cable clip, metal, L=110 mm



PreCONNECT® flexNET cabling system

Accessories:

**Keystone connecting socket 45x45 mm
1 port unoccupied, pure white**

114L1001

- Insertion direction of module, inclined approx. 30° downwards



**Keystone connecting socket 45x45 mm
2 port unoccupied, pure white**

114L1002

- Insertion direction of module, inclined approx. 30° downwards

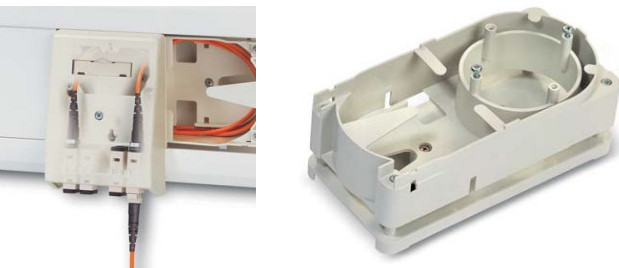


**Keystone connecting socket 80x80 mm 1 port unoccupied,
pure white**

114L1011

**Keystone connecting socket 80x80 mm 2 port unoccupied,
pure white**

114L1012



**Connecting socket 4x LCD, 9µm pure white UP
Connecting socket 4x LCD, 50µmOM3 pure white UP
Connecting socket 4x LCD, 50µmOM4 pure white UP**

**114L0041
114L0102OM3
114L0102OM4**

**Connecting socket 4x LCD, 9µm pure white AP
Connecting socket 4x LCD, 50µmOM3 pure white AP
Connecting socket 4x LCD, 50µmOM4 pure white AP**

**114L0161
114L0212OM3
114L0212OM4**

Cable reserve 50 mm

114L0320

About Rosenberger OSI

Ever since 1991, Rosenberger Optical Solutions & Infrastructure (Rosenberger OSI) has been an acknowledged expert in the field of optical fiber-based connection technology, cabling solutions and infrastructure services for datacenters, LANs, wireless networks and industrial applications.

As an integrated solution provider, we have considerable development expertise and excel in the operational production of system solutions for communications networks. Our comprehensive services permit the secure, efficient operation of digital infrastructures. This combination combined with our commitment to our customers makes us unique and a strong partner in the global market.

Since 1998, Rosenberger OSI has been part of the globally active Rosenberger Group, one of the world's leading suppliers of high-frequency, high-voltage and fiber-optic connection solutions which has its head office in Germany.

You can find further information at www.rosenberger.com/osi

Rosenberger

Rosenberger-OSI GmbH & Co. OHG

Optical Solutions & Infrastructure | Endorferstr. 6 | 86167 Augsburg | Phone: +49 821 24924-0
info-osi@rosenberger.com | www.rosenberger.com/osi

Rosenberger® is a registered trademark of Rosenberger Hochfrequenztechnik GmbH & Co. KG. All rights reserved. © Rosenberger 2021

For technical reasons, we must reserve the right to make changes compared to the depictions printed in the product information.
Transfer to a third party only with the agreement of Rosenberger-OSI GmbH & Co. OHG. All rights reserved

Created: 22/02/2021
In effect since: 22/02/2021
Revision 001