

THE PENNSYLVANIA ACADEMY OF THE FINE ARTS

ANNUAL REPORT JANUARY 1, 1979 – DECEMBER 31, 1979

THE ONE HUNDRED AND SEVENTY-FOURTH

ANNUAL REPORT

OF THE

PENNSYLVANIA ACADEMY OF THE FINE ARTS

1979



Since its founding in 1805, The Pennsylvania Academy of the Fine Arts has been dedicated to collecting the finest in American Art and to the education of many of the country's outstanding artists.

The Academy building is a designated Historic Landmark; it is a splendid Victorian building which was a major attraction of the Centennial celebration in 1876 and houses its galleries and its school. It was restored to its former glory in 1976 and now stands as the only completely authentically restored Frank Furness building of this era in Philadelphia.

ISBN O-8757-85-6

Library of Congress
Catalogue Card Number 52-22247

Published by
The Pennsylvania Academy of the Fine Arts
Broad and Cherry Streets
Philadelphia, Pennsylvania 19102

Copyright 1980 by
The Pennsylvania Academy of the Fine Arts
All Rights Reserved

Printed in the United States of America

Cover: Detail of the Pennsylvania Academy of the
Fine Arts Grand Stairhall wall
Design: Barbara Sosson Design
Photograph: Meredith Sosson

Report Design and Production:
Susan Rappaport and Barbara Sosson Design

Photographic Credits:
George Bezushko
Will Brown
Tom Ewing
Thomas Feist
Martha Ledger
Karl H. Riek
Jules Schick
Akira Suwa, *Philadelphia Inquirer*
D. Robert Yarnall, Jr.

CONTENTS

Exhibitions	4
Report of the President	6
Report of the Director	8
Report of the Curator	10
Acquisitions	12
Loans	14
Report of the Museum Education Director	17
Report of the Dean of the Academy School	19
Report of the Women's Committee	21
Report of the Department of Development, Membership and Public Information	23
Financial Statements	25
Board of Trustees, Advisory Board	34
Committees of the Board of Trustees	34
Members of the Administration and Staff	35
Contributors	37



1979 EXHIBITIONS

MAIN GALLERIES

December 8, 1978 – February 25, 1979
350 MASTERPIECES OF AMERICAN ART
(Drawn from the Permanent Collection)

March 9 – April 29, 1979
ARTIST AND TEACHER

May 16 – June 3, 1979
ANNUAL STUDENT SHOW

June 22 – August 26, 1979
THE PRIVATE EYE

September 21 – December 16, 1979
SEVEN ON THE FIGURE

MORRIS GALLERY

January 11 – February 25, 1979
HORACE PIPPIN

March 8 – April 22, 1979
ARLENE LOVE

May 3 – June 17, 1979
HITOSHI NAKAZATO

June 30 – August 26, 1979
GROUP SHOW: MAURIE KERRIGAN, SID SACHS, JOHN FERRIS, WILLIAM WALTON, BRUCE POLLOCK

September 14 – October 28, 1979
CYNTHIA CARLSON

November 10 – December 30, 1979
ISAIAH ZAGAR (WITH A LOT OF HELP FROM HIS FRIENDS)

PEALE HOUSE GALLERIES

January 12 – February 14, 1979
PAFA STUDENT SHOW

February 21 – March 21, 1979
BOB BARFIELD AND JIM HANES

March 29 – April 27, 1979
FRANCIS SPEIGHT, Landscapes and Cityscapes

May through Summer
STUDENT SHOW, SPRING PRIZE WINNERS

September 13 – October 4, 1979
FACULTY SHOW AND STUDENT PRIZE WINNERS

October 12 – November 1, 1979
JOSEPH GROSSMAN

November 8 – November 30, 1979
TOM HATTAN AND BILL SCHMIDT

December 6 – December 28, 1979
LUCY GLICK AND LARRY FRANCIS

Opposite:

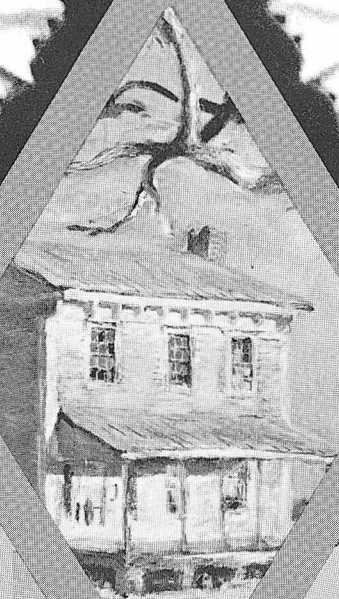
1. Arlene Love, Morris Gallery 2. Francis Speight, *Farm House, Halifax County* (detail), exhibition at the Peale House 3. Cynthia Carlson invitation for her exhibition *Homage to the Academy* in the Morris Gallery 4. Installation photograph, *Seven on the Figure* 5. *Peri at the Gates of Paradise*, Thomas G. Crawford, Permanent Collection 6. Installation photograph: *The Private Eye* 7. *Standing Man, Pregnant Woman*, Steven DeStaebler from *Seven on the Figure* 8. *Artist and Model* (detail), John DeAndrea, from *Seven on the Figure* 9. Entrance, *Isaiah Zagar (With A Lot of Help From His Friends)*, Morris Gallery



1

THE FIGURE

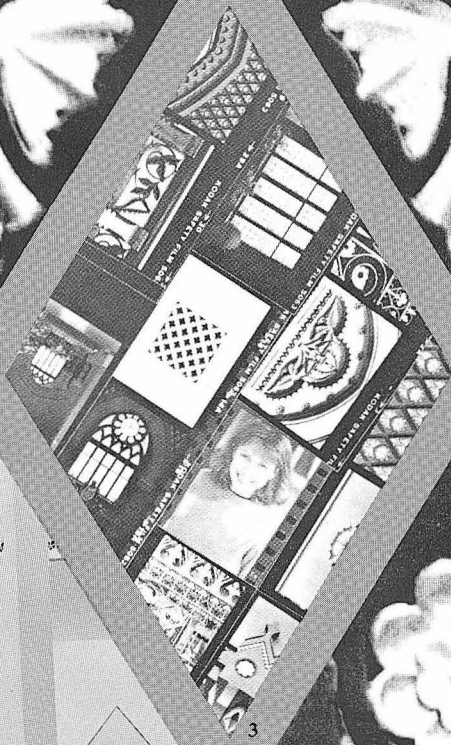
- JACK BEAM
- JOAN BROWN
- DEN KAMHRA
- JOHN DI ANDREA
- WILLIAM BRUCKMAN
- ALLEN M. ROSSING
- HENRICH STAMMER



2

THE EYE

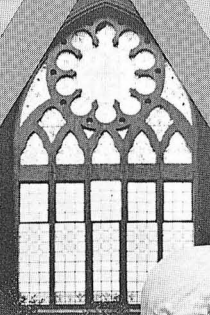
PHILADELPHIA COLLECTORS



3



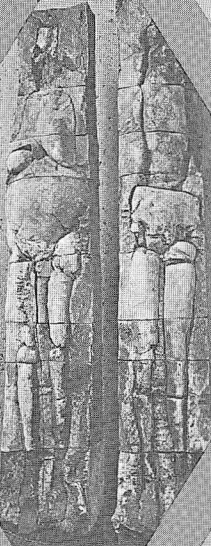
4



5



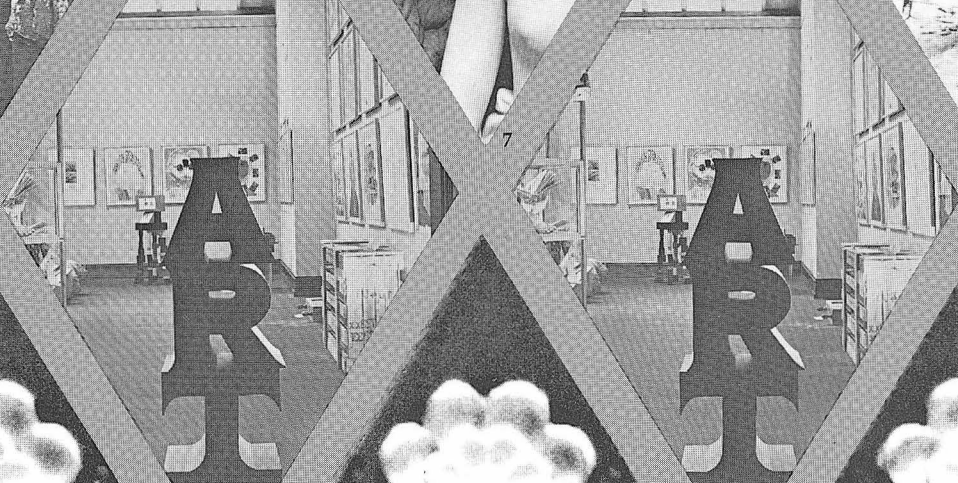
8



6



7



9



REPORT OF THE PRESIDENT

Art is long, and Time is fleeting....

Longfellow, "A Psalm of Life"

This year went so swiftly by that we must stop, take a deep breath and review some of its highlights which, in summary, constitute 1979's contributions to the future. This is the purpose of our Annual Report.

"The Year of Innovation"

Borrowing from the Chinese, 1979 may well be classified as "The Year of Innovation," the base for which is the oldest art institute in the United States. In this year, the museum, school, administration and ancillary services started giving it new directions — positive and creative ones for the Academy. We have had our great exhibition program supplemented, for example, by the Morris Gallery exhibitions, a showcase for new and vital Philadelphia area artists. These fill an important need for young artists and have been greatly appreciated by the local art community. Mrs. John Wintersteen was awarded the Academy Gold Medal on April 25, 1979, for eminent service to art and to the Academy. Contrasting this local and national interest with that on the international side, the Academy's Gold Medal was also presented to Robert Motherwell, in December, the first time that a living artist has received the Medal in thirteen years.

New Features

Acknowledging the needs of today's students and the climate in which we live, you will note in the Dean's Report that the Pennsylvania Academy of the Fine Arts has been accredited by the National Association of Schools of Art. This will enable us to continue our PAFA character and image, yet enhance student aid and other types of grants available to the Academy.

In the tradition of "The King is dead, long live the King," we most heartily thank those Trustees who rotated off our Board; namely, Daniel W. Dietrich, II, John Gribbel, II, Donald E. Meads and Bertram L. O'Neill. All of these Trustees have left lasting contributions as remembrances of their services.

We are pleased to welcome, on the other hand, Mrs. Elliott R. Detchon, Jr., F. Eugene Dixon, Jr., William L. Grala, Samuel M. V. Hamilton, Henry F. Harris and Mrs. Meyer P. Potamkin as new or returning Trustees.

The Year of Innovation also provided us with a Membership Coordinator, a necessary position created by our increasing membership and the necessary peripheral activities that contribute to our overall progress and stature. A good example of this is the Charles Willson Peale Society, a distinguished group of PAFA enthusiasts who constitute an innovative reference group participating in our activities. There are ninety-three Charles Willson Peale Society members.

On the financial side, we merged the office of Treasurer with that of the Finance Committee and completed our first year of coordinating the calendar year with our fiscal year. A monumental fiscal challenge!

Of course, as in the case of most museum annual reports the financial statement deals only with the economics of the operation of the institution. It does not recognize *all* value of the art collections.

In the case of the Pennsylvania Academy there have been considerable valuable additions to the collection during the year.

The Jordan Conservation Laboratory continues to expand, the Peale Club continues to expand its facilities, the school library has been completed and the new Photography Laboratory is in full operation. The Peale Club enjoys peak membership in its attractive surroundings at 1819 Chestnut Street. Its facilities have been



The Beggars of Cordova, Edward Lord Weeks, Permanent Collection

refurbished, the Charles Willson Peale private dining room was installed and as such is providing a happy gathering place for those interested in the American cultural world.

We look forward to 1980 and the many ways and means of cooperating with the increasing number of foundations, corporate sponsors, national, state and municipal organizations, all of which are demonstrating an increased appreciation of what the Academy represents.

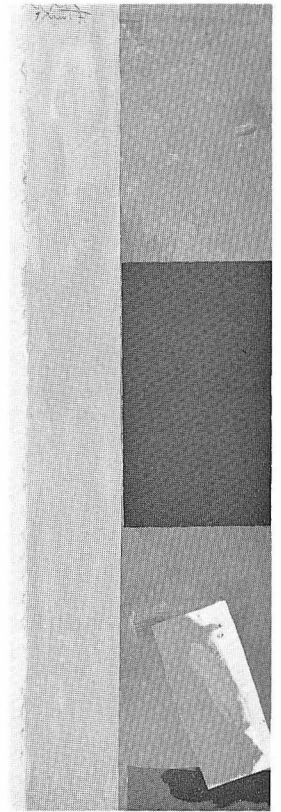
In this latter case, great examples of our sponsorship are exemplified by the following: The Pew Memorial Trust in its support of major exhibitions, the Sun Company with its interest in the 1980 Wyeth exhibition, the City of Philadelphia which contributes to our scholarship program, the Claneil Foundation's unrestricted gift, and lastly and most importantly, the generous financial support that the Women's Committee donates to the school, museum and general operations — all this in addition to their many hours of work on our various projects.

Speaking for the Board of Trustees, we are proud of the "Year of Innovation" and deeply grateful to all of those who made it possible.

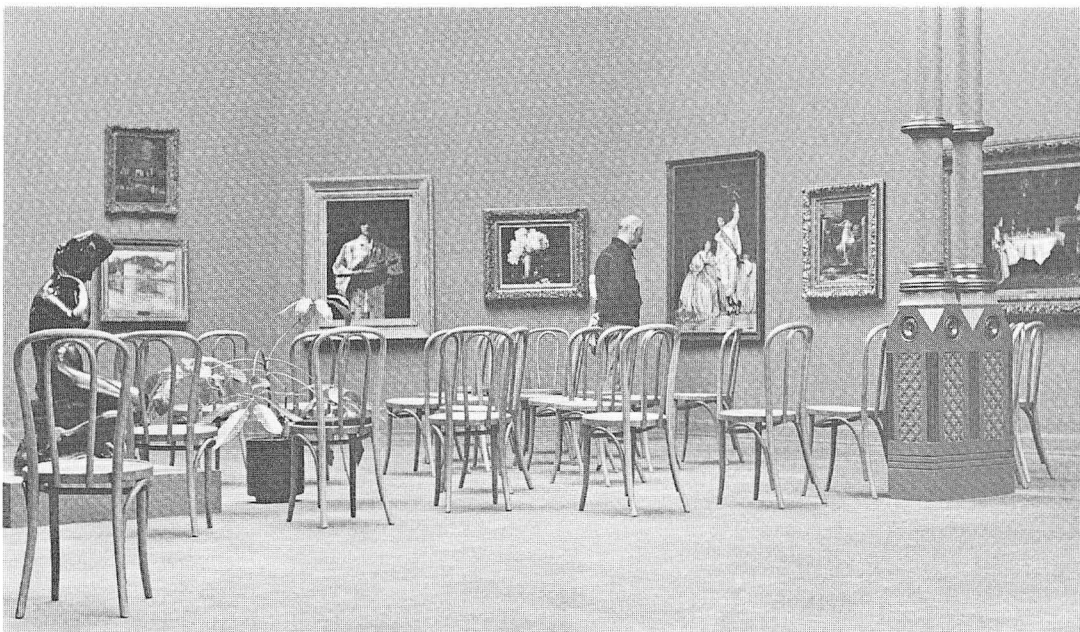
Henry S. McNeil
President



Henry S. McNeil presents Academy Gold Medal to Mrs. John Wintersteen



Black in Hiding
Robert Motherwell



New Gallery chairs replace benches, in accordance with Academy architect Frank Furness's original intent, donated by Pew Memorial Trust



REPORT OF THE DIRECTOR

New Organization

The Pennsylvania Academy's first calendar fiscal year began in January 1979 and during this time we have continued to work intensively to clean out the underbrush of the past, to resolve the problems of past methods of organization and ways of working in order to get a more precise picture of the future.

We have come a long way toward getting our financial house in order so that the Treasurer and the Finance Committee receive accurate information as to where we stand, and we have been working on a stronger internal organization to present our programs more effectively. We are constantly reviewing staff positions and upgrading the staff from within and without, particularly in the areas of Administration, Development, and the School.

Some of the more significant achievements in 1979 include accreditation for the School, a new and more vital membership department, a harder-hitting development thrust and a more efficient administrator's office.

Academy School

Accreditation by the National Association of Schools of Art has given the School the increased national recognition it deserves and has provided our students with more than \$100,000 in aid from the federal government. Richard Ranck was named Financial Aid Officer, Jill Rupinski was promoted to Registrar and Blanche Moore was promoted to Admissions Officer, where a more aggressive recruitment program has been established. A special Saturday program in cooperation with the city school system was instituted and one of the highlights of the faculty-sponsored exhibition program in the Peale House was a major retrospective given to Francis Speight on the eve of his retirement.

New Membership Program

A better organized and more aggressive membership effort was developed under the supervision of Mrs. Allan Evans, who came to the Academy in February as our first full-time Membership Coordinator. Jodie has instituted a program of special events for all classes of membership. Membership is part of the function of the Department of Development which is now headed by Elaine Breslow who joined the Academy in June, following the retirement of Al Meyers.

Administrative Changes

In the administrative area, Harvey Gold has replaced Robert Stubbs who retired as administrator in April. Harvey has developed new financial and administrative procedures. One of his major efforts along with the Director and the other members of the executive staff has been the beginning of a personnel manual and a study of job descriptions. We also embarked on exterior work on the Broad and Cherry building as the final stage in its restoration, through the generosity of the Pew Memorial Trust.



Exhibition Program

Administration and Development are the supporting areas for the Academy's programs, one of the most important of which is exhibitions. In fact, the exhibition program is the single most important visible and public indication of the Academy's activities. Exhibitions for 1979 included *350 Masterpieces of American Art*, which consisted of a new way of showing the Academy's collection; *Artist and Teacher*, an exhibition of work by the Academy's faculty, curated by the Director; The Annual Student exhibition; *The Private Eye*, a showing of work from private collections in the



Artist and faculty member Will Barnet gives Food for Thought Gallery Talk during exhibition, *Artist and Teacher*, curated by Director

area; but the most significant exhibition was *Seven on the Figure*, part of an ongoing series related to our Curator's study of contemporary American Realism. The Morris Gallery exhibition program continued to offer exposure and support to young regional artists.

Special Events and Lectures

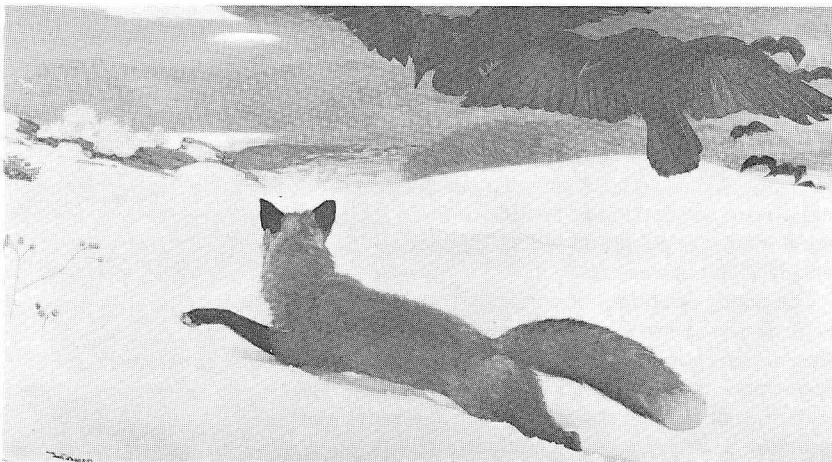
There was a great deal of new activity in the form of events in conjunction with exhibitions. Our lecture program included Robert C. Alberts on his book *Benjamin West*; Philippe de Montebello, the Director of the Metropolitan Museum of Art; Lawrence Alloway, historian and critic, and William Beckman, artist, both on *Seven on the Figure*. The Director lectured on his new book, *John Twachtman*, and the staff gave a series of slide talks on *Seven on the Figure*. The lecture series was also augmented this year by a new format given at noon, called "Food for Thought." The staff and members of the faculty joined forces on this series. All of these events were accompanied by increasing publicity and higher visibility for the Academy.

In conclusion, an outline of the Academy's goals and objectives was developed by the Director and Executive Staff in preliminary form for presentation to the Long-Range Planning Committee. In the course of studying the Academy's future plans and programs, it was interesting to note that important aspects of the original charter of 1805 are still valid, and the basic mission of acquiring and exhibiting American art is very clear.

Richard J. Boyle
Director



Travel writers invited to the Academy through Convention and Visitors Bureau receive a special tour from the Director



The Fox Hunt, Winslow Homer, Permanent Collection, selected by BBC for inclusion in television program "One Hundred Best Paintings"

Richard J. Boyle and Mrs. Richard Thornburgh enjoy the Pennsylvania Academy of the Fine Arts Gala, sponsored by the Women's Committee



REPORT OF THE CURATOR

Exhibitions

In 1979 the Academy's Museum program continued to gain stature and recognition for its achievements. In matters of exhibitions and their public interpretation, conservation, acquisitions, policy formulation, internal organization, public responsiveness and a more professionally trained staff managing increasingly difficult museum-related problems, 1979 was a proud year.

Two exhibitions in the 1979 program reflected upon areas relatively unknown to many of our visitors: the tangible achievements of those who teach art and the visible rewards of those who collect it. *Artist and Teacher*, organized by the Academy's Director, Richard Boyle, exhibited forty-two works by the faculty of the Academy school. As a reflection of the Academy's distinctive and vigorous tradition of instruction, this exhibition also illustrated the variety of personal interpretations the faculty bring to bear on that tradition.

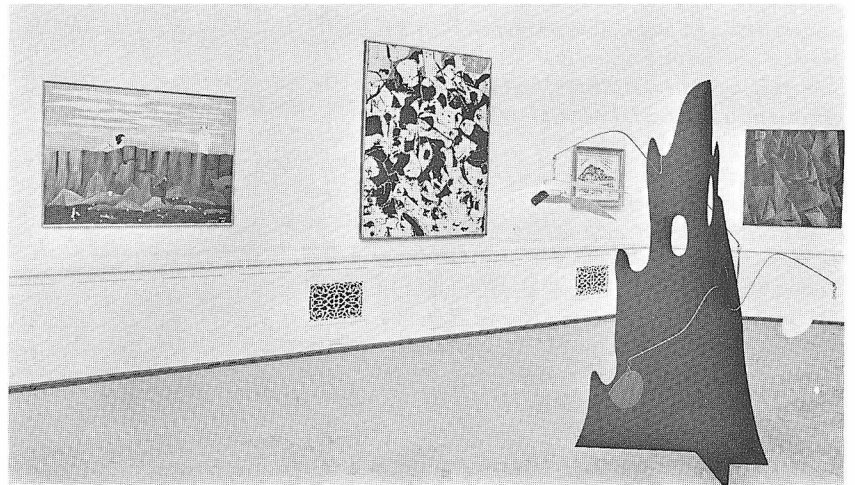
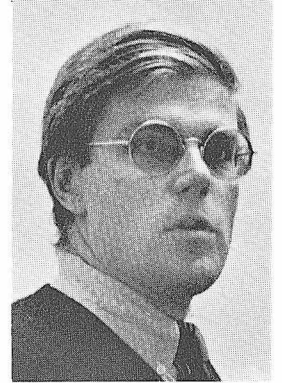
The Private Eye: A Salute to Philadelphia Collectors, an exhibition which graced the galleries between June and August, brought together seventy-one works of American art generously lent to us by fifty Philadelphia collectors. It was a privilege to have been able to select and arrange these works from among the richness that exists in private collections here and a great satisfaction to be able to share these works with our public, to whom they are usually inaccessible.

The major exhibition of contemporary art in 1979, *Seven on the Figure*, focused on the diverse perceptions of the human form by seven American artists. Although not strictly an exhibition of the realist style, this show was the second in a series that will culminate in 1981 with a broad survey exhibition of *Contemporary American Realism Since 1960*.

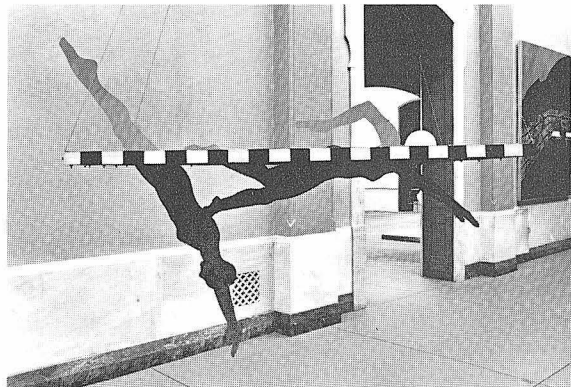
The exhibition program at the Academy is designed to serve the needs of the community while simultaneously furthering the appreciation of American art. This past summer thirty-seven works from the permanent collection were on loan to the Governor's home in Harrisburg. Installed in the public rooms of the mansion, these outstanding examples of American art were seen by tourists and distinguished visitors, thus extending the Academy's visual treasury outside the immediate Philadelphia area. It was

our pleasure to be able to cooperate with Governor and Mrs. Thornburgh and their arts advisory staff in this temporary exhibition.

The Morris Gallery exhibitions of works by contemporary Philadelphia artists continue to move in innovative directions. This past year featured installations by Cynthia Carlson and Isaiah Zagar and exhibitions by Arlene Love and Hitoshi Nakazato. The summer group show included Maurie Kerrigan, Sid Sachs, John Ferris, William Walton and Bruce Pollock. We are grateful to Ann Friedman, Morris Gallery Coordinator, and to the members of the Morris Gallery selection committee for their sustained enthusiasm and efforts in bringing the newest work of Philadelphia artists to our attention.



Works on loan for *The Private Eye: A Salute to Philadelphia Collectors*, Frank H. Goodyear, Jr., Curator

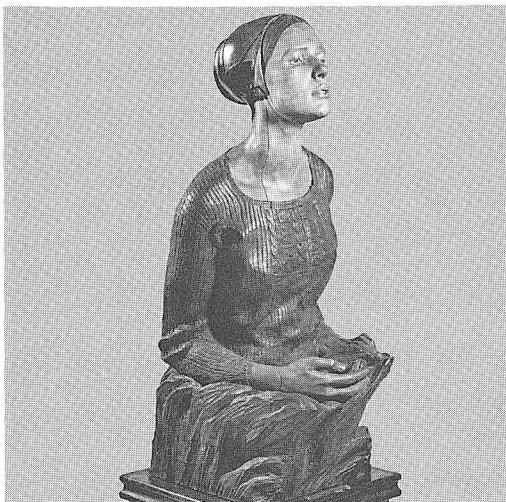


Swimmers, Joan Brown, from the exhibition *Seven on the Figure*

Painting and Sculpture Conservation

Conservation is at the foundation of curatorial work and, as I've stated in previous reports, a perpetual museum responsibility. It is also a particular "art" requiring good and proper tools. In this respect, the Academy's conservator, Joseph Amarotico, has again been generously assisted through the support of Mr. and Mrs. Bertram L. O'Neill, who this year provided for the installation of a photographic laboratory to document and augment the conservation of paintings in the Academy's collection. Among the paintings conserved in 1979, *The Beggars of Cordova* by Edwin Lord Weeks and *Gil Blas Securing the Cook in the Robber's Cave* by Thomas Sully have not been exhibited at the Academy in recent memory. Additionally the Academy's active sculpture conservation program, initiated last year through a National Endowment for the Arts grant and supported by matching funds from Mr. and Mrs. C. Wanton Balis, Jr., Mrs. Edward C. Cassard, Mr. Samuel M.V. Hamilton, H.J. Heinz II Charitable and Family Trust, Mrs. E. Miles Valentine, and the Jordan/O'Neill Fund, continues to revitalize the Academy's historic American sculpture collection. In 1979, under the most able direction of Virginia Naudé and her assistants, Brent Hile and Jennifer Dinsmore, thirty-five works were conserved including *Hero* by William H. Rinehart, *Quest* by William S. Kendall and *Joseph Wright* by William Rush.

Quest, William S. Kendall



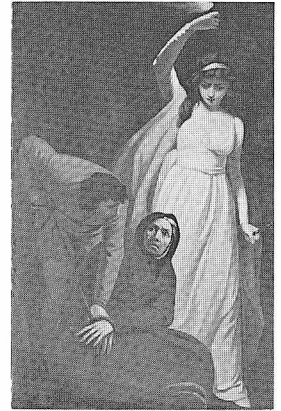
Acquisitions

Acquisitions for the permanent collection become historic statements about the generosity of the donors and the judgment of the curator in acquiring not only the best contemporary American art but also in augmenting the permanent collection. Funds for acquisition at the Academy are limited; a National Endowment for the Arts grant of \$20,000 allowed the Academy to continue to add important contemporary works to its collection. We particularly appreciate the support of the Mutual Assurance Company, Mrs. H. Gates Lloyd, Theodore T. Newbold, Marion B. Stroud, Mrs. John Wintersteen, Philadelphia National Bank, Jordan/O'Neill Fund and the Women's Committee of the Pennsylvania Academy in matching the funds for this grant. I am also indebted to the members of the Collections and Exhibitions Committee and its chairman, Charles E. Mather, III, who review curatorial recommendations for their continued interest, guidance and support. This year's acquisitions are listed on the following pages.

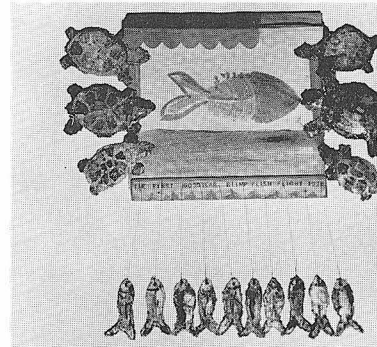
Staff

As always, the museum staff performed their various duties with complete professionalism. They are a great credit to the Academy, and make it possible for the institution to present a more active and varied museum program. I would particularly like to acknowledge the excellent work of Janice Stanland, Registrar, and her assistant, Melinda McGough; Betsy Kolowrat and her ever cheerful docents; Roman Tybinko, Preparator, and his assistants, Jim Conboy and Susan Kelly; Cathy Stover, Archivist; and Bob Harmon, Rights and Reproductions. Also, I am extremely grateful to my assistant, Betty Romanella, for her excellent and thoughtful attention to a vast variety of curatorial responsibilities and daily details. Finally, I should note that since November the Academy is most fortunate to have Kathleen A. Foster as its Assistant Curator. Kathy's presence at the Academy will help to assure the excellence of its museum program and the commitment of the Academy to the best in American art.

Frank H. Goodyear, Jr.
Curator



Gil Blas Securing the Cook in the Robber's Cave, Thomas Sully



The First Goodyear Blimp Flish Flight, Maurie Kerrigan, Morris Gallery



ACQUISITIONS

By Gift:

PORTRAIT OF GEORGE WASHINGTON NORRIS

by Daniel Garber
Oil on canvas
30-1/2 x 25 in.
Gift of William Jordan
1979.11

MORNING GLORIES

by Vera White
Watercolor on paper
21-3/4 x 18-1/2 in.
Gift of Milton J. Garfield
1979.10

MARY ANN ROSET BICKING

by Rembrandt Peale 1844
Oil on canvas
20-1/8 x 24-1/8 in.
Gift of the Estate of Mrs. Henry H. Pease
1979.7.1

ELLA HOLLENBACK BICKING

by Rembrandt Peale
Oil on canvas
29-1/16 x 36-1/16 in.
Gift of the Estate of Mrs. Henry H. Pease
1979.7.2

WOMAN WITH RED SKIRT

by Reginald Marsh 1949
Oil on board
recto: 11-5/6 x 8-5/8 in.
(Verso: *WOMAN IN RED BLOUSE*, 1953)
verso: 11-7/16 x 8-7/16 in.
Gift of the Estate of Felicia Meyer Marsh
1979.8.1

FIVE WOMEN

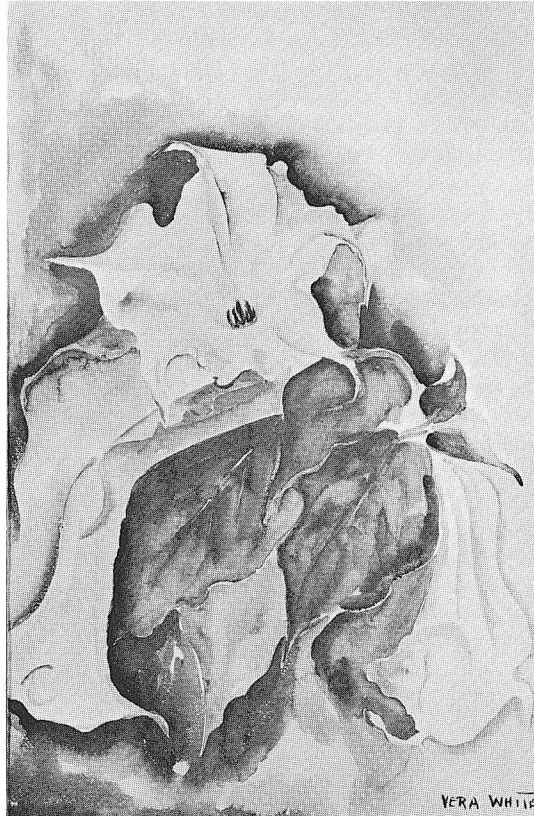
by Reginald Marsh
Oil on paper
11-1/4 x 16 in.
Gift of the Estate of Felicia Meyer Marsh
1979.8.2

BOARDWALK SCENE

by Reginald Marsh
Watercolor and charcoal on paper
22-3/8 x 31 in.
Gift of the Estate of Felicia Meyer Marsh
1979.8.3

JUNKYARD SCENE

by Reginald Marsh
Watercolor and pencil on paper
13-15/16 x 9-15/16 in.
Gift of the Estate of Felicia Meyer Marsh
1979.8.4



Morning Glories, Vera White

TRAINYARD WITH TANKCARS

by Reginald Marsh 1932
Watercolor and pencil on paper
14 x 19-15/16 in.
Gift of the Estate of Felicia Meyer Marsh
1979.8.5

MAHONoy MOUNTAIN ON THE SUSQUEHANNA RIVER

by Russell Smith 1840
Oil on canvas
41-1/8 x 51 in.
Gift of R. Alexander Montgomery
1979.9

DIBUJOS DE CALIDAD E IMPORTANCIA

by Isaiah Zagar c. 1978
Ink, crayon, pencil, paper, glitter and sawdust on
Arches Buff paper
30-1/8 x 22-1/4 in.
Gift of Isaiah Zagar
1979.2



Dibujos de Calidad e Importancia, Isaiah Zagar

A STREET IN TARRASCON

by Birge Harrison 1889
Oil on canvas
17 x 19 in. (irregular)
Gift of Mrs. R. J. Carson, Jr.
1979.4.1

A PROVENÇAL COOPERING SHOP

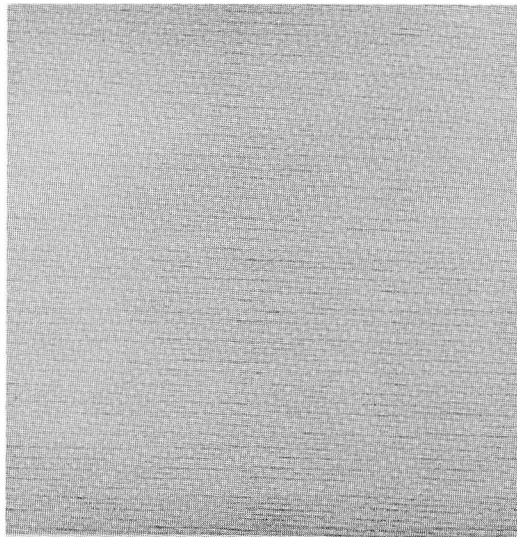
by Birge Harrison
Oil on canvas
16-3/4 x 19 in. (irregular)
Gift of Mrs. R. J. Carson, Jr.
1979.4.2

51 DRAWINGS

by Herbert Pullinger
Pen and ink, pencil, watercolor, crayon
Gift of Mr. Martin P. Snyder
1979.12.1-51

PLANTING TWO

by Warren Rohrer 1973
Oil on canvas
66 x 66 in.
Gift of Mr. Fred McBrien
1979.13



Planting Two, Warren Rohrer

THE BEACH AT TENBY, WALES

by William Trost Richards
Oil on canvas
35-1/8 x 26-1/8 in.
Gift of Dr. Bernard J. Ronis
1979.14

UNTITLED

by Richard Lindner
Lithograph on paper
47-13/16 x 37-15/16 in.
Gift of Mr. Robert Kardon
1979.15

By Purchase:

NUDE

by Sam Maitin 1978
Watercolor, pastel and pencil on paper
17-11/16 x 11-3/4 in.
Purchased with funds from the National Endowment
for the Arts and Contemporary Arts Purchase Fund
1979.5

FINGER IMPLANT

by Jody Pinto
Watercolor, pencil and gouache on Strathmore paper
each of three pieces, 29-7/8 x 39-7/8 in.
Purchased with funds from the National Endowment
for the Arts and Contemporary Arts Purchase Fund
1979.6



**American Institute of Architects,
Washington, D.C.**

JAMES MADISON
Unknown (after Stuart)

WASHINGTON FAMILY AT MT. VERNON
Unknown (after Savage)

Academy of Music

PHILADELPHIA ORCHESTRA
Arthur B. Carles

Colonial Dames – Lemon Hill

HENRY PRATT
Henry Inman

Wharton Esherick Museum

DARLING
(wood)
Wharton Esherick

TWIN TWIST
(wood)
Wharton Esherick

Executive Mansion, Harrisburg, Pa.

IN A GARRET
Thomas Anshutz

MOROCCAN GOAT
(stone)
Nathaniel Choate

CARNIVAL OF SAILS
Balcomb Greene

THE HEX SIGN
Henry Peacock

GEORGE WASHINGTON
Rembrandt Peale

WEST CHESTER COURT HOUSE
Horace Pippin

WILLIAM PENN'S TREATY WITH THE INDIANS
Edward Savage

HORACE TRAUBEL
John Sloan

**Federal Reserve Board of Governors,
Washington, D.C.**

CHILDISH THOUGHTS
William L. Lippincott

*MRS. SAMUEL GATLIFF AND DAUGHTER
ELIZABETH*
Gilbert Stuart



Still Life No. 1, James Peale, on loan to the Germantown Historical Society, Deshler Morris House



Moroccan Goat, Nathaniel Choate, on loan to the Executive Mansion, Harrisburg, Pa.

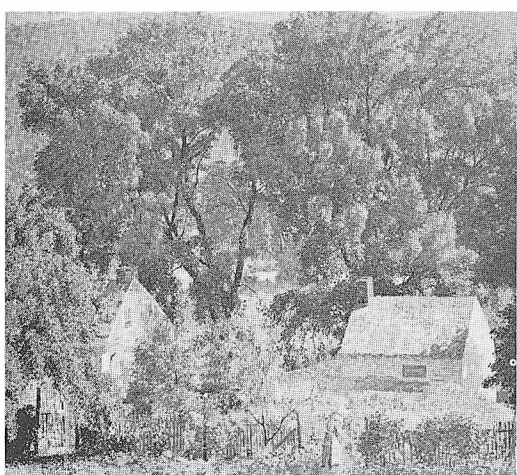
**Germantown Historical Society – Deshler
Morris House**

STILL LIFE No. 1
James Peale

COLONEL ISAAC FRANKS
Gilbert Stuart



Self-Portrait, Angelica Kauffman, on loan to the Landmarks Society, Powel House



Sun in Summer, Daniel Garber, on loan to the White House, Washington, D.C.

**Independence National Historical Park –
Bishop White House**

ELIZABETH LEIGH WHITE
Sir Godfrey Kneller

WILLIAM WHITE
Sir Godfrey Kneller

Landmarks Society – Powel House

SELF-PORTRAIT
Angelica Kauffman

MRS. RICHARD PETERS
Gilbert Stuart

Ebenezer Maxwell Mansion

AUTUMN LANDSCAPE
George Bensell

SUMMER LANDSCAPE
George Bensell

STILL LIFE
Johann Preyer

FLOWERS
Simon Saint-Jean

**National Trust for Historic Preservation –
Cliveden**

CHEW HOUSE, GERMANTOWN
Russell Smith

The Philadelphia Club

STILL LIFE WITH BIRDCAGE
Franklin Watkins

SUMMER SCENE
Franklin Watkins

Racquet Club

THE DELAWARE VALLEY
Charles W. Knapp

NOVEMBER AFTERNOON
Henry B. Pancoast, Jr.

PENNSY TRAIN SHED
Morris Pancoast

ROCKY BEACH
Marianna Sloan

BLUE GULF STREAM
Frederick J. Waugh

Rittenhouse Club

BOUNDARIES

Kenneth Bates

IN THE VALLEY

Ross E. Braught

PARKWAY

Gertrude Capolino

*MRS. SMITH IN HER ROCKING CHAIR
WATCHES THE PEOPLE PASS BY*

Nancy M. Ferguson

WEST RIVER, VERMONT

Aldro T. Hibbard

SUNSHINE ON ST. IVES

Hayley Lever

CIRCUS

(F.) E. McMurtrie

LANDSCAPE

Myer Wattman

NEWS FROM THE MAINLAND

Andrew Winter

United States Embassy – London

The Honorable Kingman Brewster
Ambassador

ST. JAMES PARK, LONDON

Daniel Garber

LORD MACAULAY

Henry Inman

ELIZABETH JACKSON

Thomas Sully

United States Embassy – Paris

The Honorable Arthur B. Hartmann
Ambassador

AN ACTRESS AS CLEOPATRA

Arthur B. Carles

MORNING AMONG THE HILLS

Thomas Doughty

ANDREW JACKSON

Ralph Earl

MOTHER AND SON

Daniel Garber

LAKE WILLOUGHBY

Edmund D. Lewis

BELL BUOY, NEWPORT, R.I.

William Trost Richards

COUNT CONSTANTIN F. VOLNEY

Gilbert Stuart

MARY McKEAN HOFFMAN

Thomas Sully



Dolley Madison, Gilbert Stuart, on loan to the White House, Washington, D.C.

The White House

CONESTOGA CREEK AND LANCASTER

Jacob Eichholtz

SUN IN SUMMER

Daniel Garber

AT THE BEACH

William Glackens

BENJAMIN FRANKLIN

David Martin

THE SKATERS

Gari Melchers

NEW HOPE

Edward Redfield

LATE AFTERNOON

Francis Speight

DOLLEY MADISON

Gilbert Stuart

MARQUIS DE LAFAYETTE

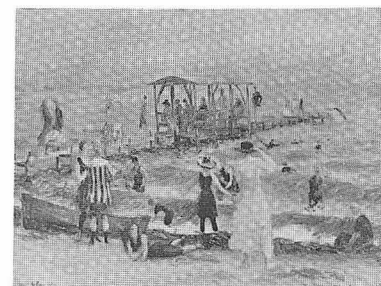
Unknown

University of Pennsylvania

KING LOUIS XIV

(wood relief)

J. W. Fosdick



At the Beach, William Glackens, on loan to the White House, Washington, D.C.



REPORT OF THE MUSEUM EDUCATION DIRECTOR

Tours

Five thousand visitors were involved in tours of various kinds during 1979. Appointments for elementary and high school groups increased 50%, while the general tour program served many visitors who came to the Academy without prior reservations. These statistics are impressive (we must be offering something of value or our audience wouldn't continue to increase), but they are inadequate to describe the quality of the work being done by PAFA's twenty-nine volunteer docents.

In fact, every tour given at the Academy is custom tailored for the particular audience involved. While the docents command a wealth of specific information, their skill as communicators makes an equally vital contribution. The primary goal of every tour is to build a bridge for enjoyment between the observer and the work of art; therefore, each tour meets the audience at its own level and develops ideas appropriately. The content of a tour may be as simple as a description of pictorial subject matter (as in *Penn's Treaty with the Indians*) or as sophisticated as an analysis of Thomas Eakins's painting technique and a discussion of reasons why his work was not well received by nineteenth-century art patrons.

TRIAD School Program

Museum lessons for school children differ from adult tours only in being study related. They are given at all levels from third grade through high school. The TRIAD program for schools is designed especially for classes studying the American revolution, the late nineteenth century, or art appreciation. Inquiry teaching (that's just a new name for the Socratic method) is used by Academy docents in the school tour program to encourage students to make observations and deductions from works of art.

Guards

This year we began a series of regularly scheduled briefings for Academy guards. Weekly half-hour sessions (affectionately known as "school") have included discussions of special exhibitions, visits to behind-the-scenes departments, and a lively exchange of information and comment about happenings at Broad and Cherry. As the sole Academy

representatives who come in contact with all of the public, our guards are a vital part of PAFA's visitor service program.

Disabled Visitors

Extending the Academy's services to disabled people is another important concern of the Education Department. Guidelines for assisting visitors in wheelchairs have successfully been tested; our signing docent Judy McCarthy is working to develop tours for deaf audiences; consultations are being held to prepare a standard Academy tour for blind visitors. The Academy has been recognized by both the Pennsylvania Council on the Arts and the National Endowment for the Arts as a model in complying with new legislation on accessibility for the handicapped.



A docent's delight: school children at the Academy



A gallery talk in the Rotunda

Volunteer Docents of the Pennsylvania Academy of the Fine Arts

Susan Behrend
Ann Bosworth
Jay Byrne
Ann Chaffe
Virginia Coslett
Shirlene Coyne
Jane Cratsley
Valerie Cutler
Claire Dorsky
Lee DeWitt
Mary Epstein
Sandra Gittis
Laurie Harken
Deborah Hummer
Irma Jelinek
Henrietta Landis
Sylvia Lieberman
Jeanne MacAlpine
Judy McCarthy
Alice McGovern
Florence Marder
Joan Mossey
Barbara Nevaril
Isabel Oppen
Janice Page
Ruth Preucel
Henriette Rogers
Lois Rosenau
Hortense Steinberg

Docent Activities

To maintain their ability to do all kinds of touring and teaching, docents themselves constantly need to be refreshed. Briefings for five special exhibitions, brushups on the permanent collection, and visits to museums in Baltimore, Brooklyn, Allentown, Princeton, and Wilmington were all an important part of the continuing education of veteran docents in 1979.

This year's thank you from the Academy to the docents was a luncheon sponsored by the Women's Committee and arranged by Lucy Stimson. Honored guests were former Academy Director Joseph Fraser and Mrs. Fraser, who enjoyed the occasion so much that they hosted a tea party for the docents at their home a few weeks later.

Elizabeth Kolowrat
Director of Museum Education



A special group tour gathers



REPORT OF THE DEAN OF THE ACADEMY SCHOOL

NASA Accreditation

An important event occurred when the Academy School hosted a reception for the membership of the National Association of Schools of Art in the fall of 1979. NASA is the accrediting agency for the visual arts recognized by the United States Office of Education. On a visit to the Pennsylvania Academy of the Fine Arts in January 1978 its evaluation team described the Academy School as "an excellent example of the diversity of American higher education in that it has charted a qualitative course distinctly different from the mainstream of American higher education and has remained a unique institution."

Accreditation by NASA has allowed the Academy School and its students to become eligible for federal and state funds, grants and loans not available to nonaccredited schools. Consequently, the financial aid office was able to facilitate the awarding of an additional \$160,000 in grants and loans to students which were not available previously. The establishment of a School financial aid office necessitated the reorganization of the School staff for purposes of student support. For the first time we were able to establish a separate financial aid office, admissions office and school registrars office.

1979 Commencement and Awards

The 77th Commencement and Awards Presentation was held in the Academy auditorium. Vice President Charles E. Mather, III, gave the opening address. Dr. Donald J. Irving, Director of the School of the Art Institute of Chicago, was the principal speaker. Eleven Traveling Scholarships and forty-one additional prizes totaling \$47,000 were awarded to students. The Philadelphia Mayor's award was presented by City Representative Joseph LaSala to Ock Jin Hyon. The Governor's Award was presented by Dr. Sandra Featherman to Koji Kawai.

Cresson Memorial Traveling Scholarships were presented to Shingo Kamiya, Mark McCullen, Carol Moller, John Nissen, Uta Schubert and Harvey Weinreich. First awarded in 1902, this year's Cresson Scholarships were in the amount of \$3800 each. The prize includes travel in Europe, followed by another year of study at the Academy. Cresson Special Commendations were presented to Edward

Bider, Edgar Jerins, Brigitte Rutenberg and Holly Silverthorne.

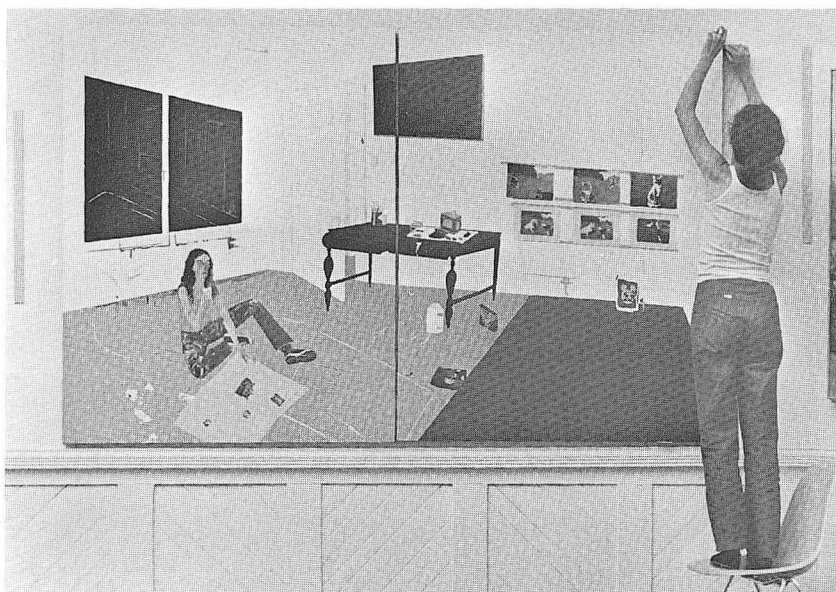
The Lewis S. Ware Memorial Traveling Scholarships, first awarded in 1938 and this year in the amount of \$2300, was given to Micheline Van Compernelle.

J. Henry Schiedt Memorial Traveling Scholarships were awarded to Anne Fleming, Sarah McEaney, Michael Moser, and William Scott. First awarded in 1949, Schiedt Scholarships were in the amount of \$2400 for 1979 and were to be used anytime within twenty-eight months. Schiedt Special Commendations were presented to Lisa Fox and Marguerite Mandes. The Schiedt Scholarships provide for travel wherever the recipients may choose.

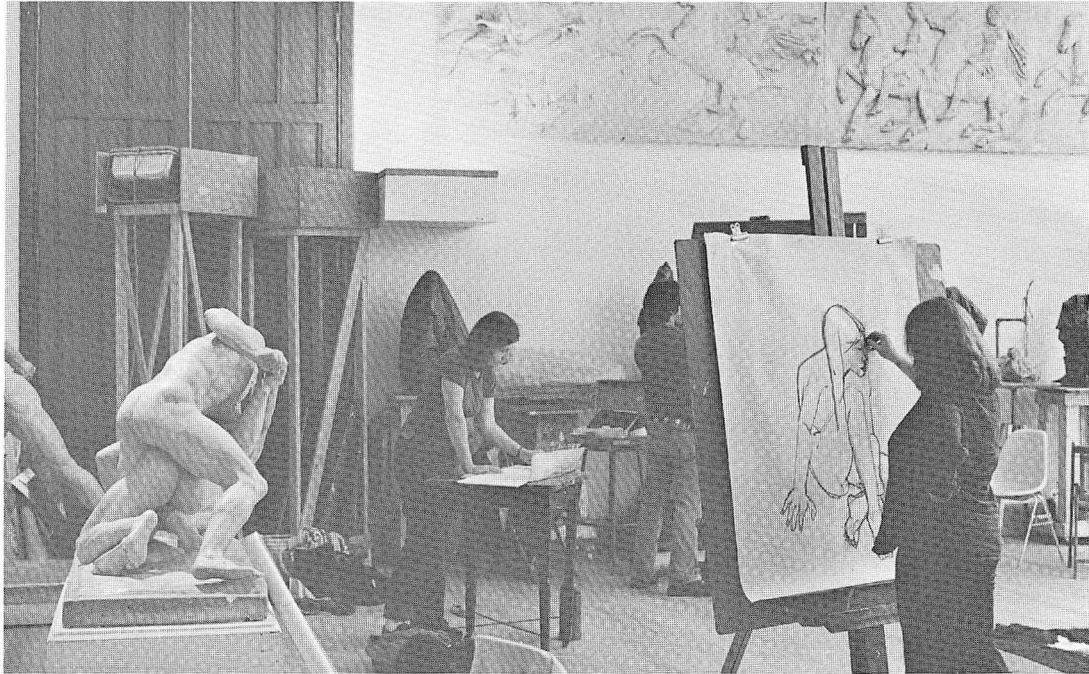
Academy students from eleven countries and twenty-seven states were registered in the School during 1979.

A New Move

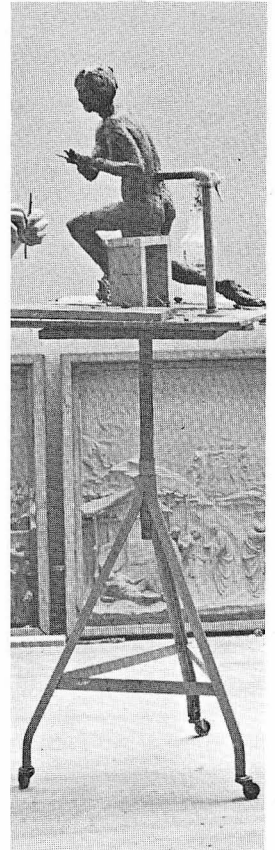
The Alumni Office moved to the Peale House during the fall semester. The Alumni Coordinator has assumed responsibility for job placement of students and alumni, as well as for cooperation with the Fellowship on the Annual Exhibition, Picnic, Saturday Drawing Class and School Open House.



Hanging the Cresson



Artists at work



Faculty Activities

During 1979, faculty members' work continued to be commissioned and exhibited all over the world. Special interest was created by the selection of instructor Arthur De Costa to paint the official portrait of Mayor Frank Rizzo of Philadelphia and by the Mayor's subsequent visits to the Academy's Peale House to sit in Arthur's studio. During the fall semester 1979, the Academy School awarded its first sabbatical leaves under a Ford Foundation grant to Roswell Weidner and Ben Kamihira. Also during the spring of 1979, Mr. Morris Blackburn, a distinguished member of the faculty, passed away. A scholarship fund has been established in his memory.

During the past year, the Board and its Committees, the Faculty and the Staff have extended themselves to insure the vitality of the Pennsylvania Academy as an institution of art education. As the first art school in the United States, we look forward to our 175th year with the confidence born of knowledge of our past.



Summer School with artist and faculty member
Louis Sloan

Ephraim Weinberg
Dean



REPORT OF THE WOMEN'S COMMITTEE

Activities

It is with a great sense of achievement that I can report on so many diverse activities in which the Women's Committee has been involved.

The Women's Committee has been an integral segment of the Pennsylvania Academy of the Fine Arts this past year and every member has taken an active part in at least one project. The cooperation, which has been most rewarding, has resulted in making this one of the most stimulating periods for the Committee.

For the first six-month period of 1979, Mrs. George Reath served as President of the Committee with much dedication and success.

Officers

In May, when I assumed the Presidency, the following officers were elected:

- Mrs. Nelson J. Leidner, President
- Mrs. L. Talbot Adamson, First Vice President
- Mrs. Robert W. Preucel, Second Vice President
- Mrs. Alexandra M. Dial, Treasurer
- Mrs. Brandon Barringer, Corresponding Secretary
- Mrs. Herbert F. Schiffer, Member at Large
- Mrs. James W. Cooke, Member at Large
- Mrs. George Reath, Ex-Officio

We initiated a new program of inviting various members from the Academy administrative staff to speak at our meetings to explain their work to us.

School

One of the principal thrusts of the Committee's interests and financial aid is in the area of the students of the School. To this end, in 1979 we provided \$14,400 to the School for students' needs. Also, in connection with each monthly opening of students' exhibitions at the Peale House, the Women's Committee hosts a luncheon which is usually attended by 250 students and representatives of the faculty. This makes for a sense of camaraderie which the students thoroughly enjoy. Mmes. Harleston R. Wood, Evan Randolph, Arthur C. Kaufmann, Avery B. Clark, Marcy W. Behr, Richard J. Fox and Hans Ludvig Lorentzen have served at these luncheons, which are so imaginatively supervised by Mr. James Lulius, Superintendent of Peale House.

Receptions

On July 15, The Women's Committee organized a bus trip to attend the reception at the Governor's Mansion in Harrisburg to meet Governor and Mrs. Richard Thornburgh and to see thirty-five of the Academy's paintings on loan there for the summer. Included in the group were several faculty and staff members.

Among the important cultural attractions offered to Academy members were the four concerts held during the year in the Auditorium at Broad and Cherry, under the direction of Mrs. Robert W. Preucel. The Women's Committee contributed \$500 this year to this series.

The receptions hosted by our Committee are always enjoyable and among those at the Academy in 1979 were the autograph party in January for Robert Alberts, author of *Benjamin West*; the party, also in January, at the opening of the David J. Grossman Bequest Exhibition; and the reception in March to welcome to the art community Miss Jean Sutherland Boggs, new Director of the Philadelphia Art Museum. We were also happy to participate in April in the first school "Open House" for parents and friends of students.

It was our pleasant privilege to honor the docents of the Academy at a catered luncheon under the supervision of Mrs. Boudinot Stimson on June 7. It was attended by over forty people and a special treat was hearing Joseph T. Fraser speak about his days as a former Academy director.

"Seasons in Art"

A most successful second edition of the calendar, "Seasons in Art," with Mrs. Susan West as Editor was published and the Committee salutes her and the many other Committee members who were so dedicated to this project.

Fairmont Gala

In connection with other galleries in Peale House, the Women's Committee also allocated \$3,000 this year for "Education through Exhibitions for Students."

The Gala Dinner and Ball at the Fairmont Hotel in November, which was attended by 1200 people, was our major event in 1979. Not



Mrs. Nelson Leidner,
Chairman, Women's
Committee



Mrs. Eysmans, Mrs. Stuart
Louchheim and Mrs.
Henry McNeil attend the
opening reception to honor
Pennsylvania Academy
works on exhibition at the
Executive Mansion in
Harrisburg

only was it a stellar social gala but also a major fund-raising project from which we were able to realize \$40,000 for the Academy. Virtually the entire Women's Committee, under the leadership of the Ball Co-Chairmen, Mrs. Albert M. Greenfield, Jr., and Mrs. George Reath, contributed toward the Ball's success. Special mention must be made of the efforts made by Mrs. Harleston R. Wood, Chairman of the Junior Gala, as well as other members of the Ball Committee: Mmes. James W. Cooke, Newlin F. Davis, J. H. Ward Hinkson, E. Robert Thomas, John H. Gribbel, II, Jack M. Enoch, Jr., Alexandra M. Dial, Alan McIlvain, Frederick W. G. Peck, Susan W. West and Lathrop B. Nelson, Jr.

Our Safaris, under the direction of Mrs. Greenfield and assisted by Mrs. Reath, have proven to be our most popular and successful source of revenue and have gained many new friends for the Academy throughout the country.

In January of 1979 an art Safari to New York to see the *Treasures of King Tut* was very successful, as was the Safari to New Orleans under the aegis of Mrs. Adamson.

Other Safari highlights included the Washington day trip in May when a group of 100 was entertained by Clement E. Conger, Curator at the White House, and always a friend of the Academy. He arranged a fascinating day with a visit to the White House to see paintings on loan from our Academy hanging in the private quarters, a special luncheon in the State Department reception room and a visit to Vice President Mondale's House.

The Private Eye Safari, led in June by Mrs. Herbert F. Schiffer, to visit private collections on the Main Line and in Chester County was a great success with two busloads of men and women touring the homes all day and then ending up at Broad and Cherry for the preview opening of the great exhibition of art works loaned by private collectors.

International attention was focused on the Academy in July by the China Safari when the group visiting China had the opportunity to meet distinguished Chinese artists and cultural figures. These visits were reported widely in the press.

Under Mrs. John Clark Keene's supervision, Christmas at the Academy was very festive



Santa comes to the Academy

because the Women's Committee invited the entire membership to a beautiful party on December 16. The children were enchanted with the clowns, puppets and small toys and the 400 guests were served refreshments against a background of beautiful decorations and choral singing.

We are very happy to report that through the efforts of two of our members, a baby-grand piano was donated to the Academy. We are most grateful for this gift.

Our Committee is taking a very active role, along with four other Philadelphia museums' Women's Committees, in sponsoring the American Association of Museum Trustees Conference to be held in Philadelphia October 2, 3, 4 in 1980.

We expect to continue our Safaris to exciting cities and exhibitions this coming year as well as to sponsor several social events for the Pennsylvania Academy of the Fine Arts.

On our drawing board, we have sketched in numerous other plans to assist the Academy in future celebrations, exhibitions, student aid programs, etc.; and as the year progresses, the Women's Committee will make even bolder brush strokes to complete our canvas.

To each of these dedicated women and the members of the Academy who are so loyal in supporting our Women's Committee functions, I wish to extend my sincere thanks.

Bobette R. Leidner
President



REPORT OF THE DEPARTMENT OF DEVELOPMENT

The Department of Development has made considerable strides in the name of the Academy. Progress, growth and change have been its keynotes.

Support Doubles

The number of corporations and foundations contributing to the Academy's support has doubled. In 1979, eighty-one proposals were submitted to a variety of potential funding sources. The Academy received funds from seventy-six of them.

A New Program for Business

To encourage businesses to contribute by giving them something of value in exchange for their support, the Academy began a Business Partnership program in 1979. Admission tickets to company personnel and immediate families for use any time during the year, specially designated company evenings, memberships for personnel and evening art classes for employees are among the benefits offered in exchange for corporate support. In this first year of the program, forty-one companies took advantage of this arrangement and became "business partners."

A New Program for Commemorative Opportunities

The Pennsylvania Academy of the Fine Arts has established a formal program to promote Commemorative Opportunities. This enables individuals, corporations and foundations to make lasting gifts by dedicating space in the building at Broad and Cherry Streets. A brochure was produced to promote this method of giving.

A New Membership Program

A new position was established, that of Membership Coordinator, thus enabling the Academy to create new and vital membership programs. Membership evenings were inaugurated with the exhibition *Seven on the Figure*. Subscription dinners and cooperative activities with other cultural institutions marked an innovative Membership Program. More than twenty-five Volunteers for Membership provided valuable assistance at many of the special events.

Two successful direct mail campaigns in the last year plus a contributing membership drive added 1000 new members to the Academy family. At year-end 1979, membership reached 3200, and is growing. This is an all-time high.

The Charles Willson Peale Society

The Charles Willson Peale Society, a special category of membership, is now in its second year. The activities planned have had a striking impact on the enrollment, which reached a first-year high of ninety-three.



Sculpture comes to life: *Seven on the Figure* interpreted in dance by the Philadelphia College of the Performing Arts, for an Academy special event

Public Information

The Public Relations Department continued in its objective to increase community, regional, and national awareness of the Pennsylvania Academy of the Fine Arts. Aggressive publication and distribution of a variety of informative brochures and a new format for the newsletter as well as increased media contact have formed an important part of this effort. One dramatic result has been an increase of attendance by more than one-third over 1978.

The ability to have achieved so much in one year is directly due to a very fine staff who have worked so hard. In their unique fashions, they fused their talents to support the Department's work and the programs of the Academy. Jodie Evans, Membership Coordinator, and Anna Mang, Membership Secretary; Susan Rappaport, Public Information Officer and Mary Hall, Assistant to the Development Director, deserve my deep and sincere appreciation for their drive, their strength and the volume of work they handled. Many of their activities were accomplished for the first time ever at the Academy. The Development Director would also like to express a personal sense of gratitude to the Development Committee of the Board of Trustees for their hours of time and for their complete support of our many innovations.

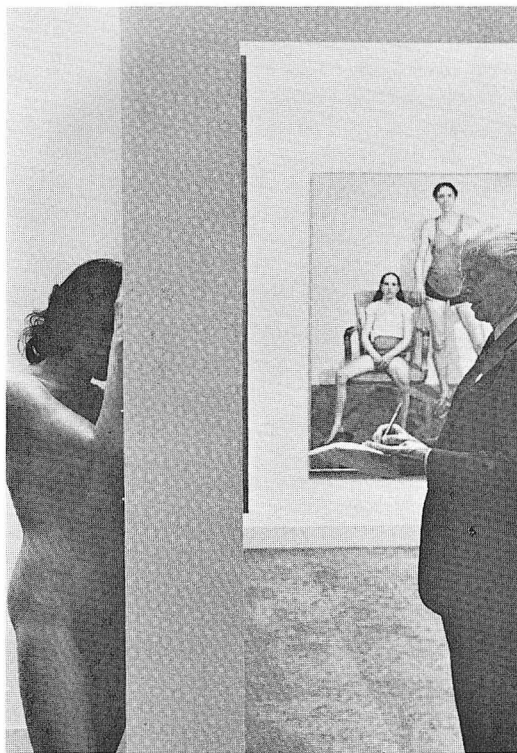
Thanks to Contributors

A list of contributors is included in this report. The Academy is most grateful to them all. Many have given more than money — they have given their valuable time and made in-kind contributions to which no monetary value can really be assigned. The Academy thanks them wholeheartedly.

Elaine Breslow
Director of Development



Members' Opening: *The Private Eye*



Joseph X. Dever, of the *Bulletin*, covers *Seven on the Figure* opening



From newsletter to newspaper



FINANCIAL STATEMENTS

Report of The Administrator

The Academy's financial statements which are shown herein reflect an excess of \$266,726 of expenses over support and revenue after capital transactions. This excess was caused chiefly by a shortfall in anticipated revenue. Substantial increases in investment income were not sufficient to overcome the effect of unrestricted gifts and grants from governmental, business and foundation sources which proved to be less than anticipated.

Generally speaking, the Academy continues to be the grateful recipient of generous support restricted to specific projects vital to its continued existence. However, in the equally vital, albeit unglamorous area of mundane operational expenditures of labor costs, utilities bills, etc., the Academy finds it increasingly difficult to obtain adequate funding. In this area, we are cautiously optimistic that our recently reorganized Development Department will succeed in substantially improving our track record by increasing our unrestricted revenue.

All in all, the Academy, along with many of its sister institutions across the country, finds itself caught in an inflationary spiral where a combination of rising expenses and falling interest rates on its investment portfolio must be matched by increasing donor support if it is to avoid deficit spending and thus remain a viable institution in the years ahead.

Harvey Gold
Administrator

Auditors' Opinion

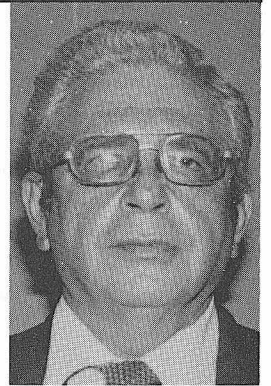
To the Board of Directors
of the Pennsylvania Academy of the Fine Arts:

We have examined the balance sheet of the Pennsylvania Academy of the Fine Arts (Academy) as of December 31, 1979, and the related statements of activity, changes in fund balances (deficit) and of changes in financial position for the year then ended. Our examination was made in accordance with generally accepted auditing standards and, accordingly, included such tests of the accounting records and such other auditing procedures as we considered necessary in the circumstances.

In our opinion, the accompanying financial statements present fairly the financial position of the Academy as of December 31, 1979, and the results of its operations and changes in its financial position for the year then ended, in conformity with generally accepted accounting principles applied on a basis consistent with that of the preceding year.

Our examination also comprehended the accompanying supplemental schedule of expenses for the year ended December 31, 1979. In our opinion, such supplemental schedule, when considered in relation to the basic financial statements, presents fairly in all material respects the information shown therein.

Deloitte Haskins & Sells
Philadelphia, Pennsylvania
March 24, 1980



An Actress as Cleopatra, Arthur B. Carles, on loan to the United States Embassy, Paris

Pennsylvania Academy of the Fine Arts
Balance Sheet, December 31, 1979

Assets	Operating Fund	Plant Fund	Endowment Fund	Total
Current assets:				
Cash	\$ 66,494			\$ 66,494
Bank certificates of deposit	60,000	\$ 50,000		110,000
Accounts receivable, less allowance for doubtful accounts of \$6,500	61,956			61,956
Grant receivable — agency (Note 7)	58,114			58,114
Pledges receivable (includes \$297,290 of restricted pledges receivable)	328,186		\$ 20,000	348,186
Accrued interest receivable	45,974		24,677	70,651
Inventories (Note 1)	53,973			53,973
Deferred exhibition expenses (Note 1)	11,204			11,204
Prepaid and other	17,351			17,351
Total current assets	703,252	50,000	44,677	797,929
Property, less accumulated depreciation of \$1,288,654 (Notes 1 and 4)		6,000,266		6,000,266
Art collection (Note 1)				
Cash held for investment	313		74,644	74,957
Investments (Notes 1 and 2)	662,801		4,289,562	4,952,363
Due from other funds	16,848	132,063		148,911
Other	3,200			3,200
Total Assets	<u>\$1,386,414</u>	<u>\$6,182,329</u>	<u>\$4,408,883</u>	<u>\$11,977,626</u>

See notes to financial statements.

(Continued)

Pennsylvania Academy of the Fine Arts
Balance Sheet, December 31, 1979

Liabilities and Fund Balances	Operating Fund	Plant Fund	Endowment Fund	Total
Current liabilities:				
Accounts payable	\$ 124,141			\$ 124,141
Accrued expenses	4,241			4,241
Agency funds (Note 7)	58,114			58,114
Deferred revenue:				
Tuition	14,418			14,418
Restricted contributions (Notes 1 and 6)	715,599	\$ 157,313		872,912
Total current liabilities	916,513	157,313		1,073,826
Due to other funds	129,438	4,900	\$ 14,573	148,911
Actuarially computed liability for retirement plan (Note 5) ...	340,000			340,000
Fund balances	463	6,020,116	4,394,310	10,414,889
Total liabilities and fund balances	<u>\$1,386,414</u>	<u>\$6,182,329</u>	<u>\$4,408,883</u>	<u>\$11,977,626</u>

See notes to financial statements.

(Concluded)

Pennsylvania Academy of the Fine Arts
Statement of Activity
For the Year Ended December 31, 1979

	Operating Fund	Plant Fund	Endowment Fund	Total
Support and revenue:				
Tuition and other school income	\$ 733,108			\$ 733,108
Museum admissions and store sales	68,656			68,656
Government appropriations	46,000			46,000
Gifts and grants (Note 1)	343,474			343,474
Memberships (Note 1)	183,365			183,365
Investment income	482,793			482,793
Revenue from other activities (Peale Club \$279,261)	283,835			283,835
Total support and revenue	2,141,231			2,141,231
Program expenses:				
School	841,481	\$ 50,385		891,866
Museum	452,880	64,780		517,660
Accession of art for collection (Notes 1 and 3)	1,600			1,600
Total program expenses	1,295,961	115,165		1,411,126
Supporting services:				
Administration (Note 9)	560,265	7,450		567,715
Development	128,773			128,773
Total supporting services	689,038	7,450		696,488
Cost of sales and expenses of other activities				
(Peale Club \$347,268)	329,407	21,341		350,748
Total expenses	2,314,406	143,956		2,458,362
Deficiency of support and revenue over expenses before capital additions				
	(173,175)	(143,956)		(317,131)
Capital additions (Note 1):				
Gifts and grants		112,769	\$ 31,890	144,659
Investment income			90,399	90,399
Net realized investment (losses)			(184,653)	(184,653)
Total		112,769	(62,364)	50,405
Deficiency of support and revenue over expenses after capital additions				
	\$ (173,175)	\$ (31,187)	\$ (62,364)	\$ (266,726)

See notes to financial statements.

Pennsylvania Academy of the Fine Arts
Statement of Changes in Fund Balances (Deficit)
For the Year Ended December 31, 1979

	Operating Fund	Plant Fund	Endowment Fund	Total
Fund balances (deficit), January 1, 1979	\$(452,570)	\$5,452,482	\$5,681,703	\$10,681,615
Deficiency of support and revenue over expenses after capital additions	(173,175)	(31,187)	(62,364)	(266,726)
Add (deduct) transfers	626,208	598,821	(1,225,029)	
Fund balances, December 31, 1979	<u>\$ 463</u>	<u>\$6,020,116</u>	<u>\$4,394,310</u>	<u>\$10,414,889</u>

See notes to financial statements.

**Pennsylvania Academy of the Fine Arts
Statement of Changes in Financial Position
For the Year Ended December 31, 1979**

Sources of working capital:	
Deficiency of support and revenue over expenses before capital additions	\$ (317,131)
Capital additions	<u>50,405</u>
Deficiency of support and revenue over expenses after capital additions	(266,726)
Items which did not use working capital:	
Loss on sale of investments	\$184,653
Depreciation	142,727
Provision for pension costs	<u>30,000</u>
Proceeds from sale of investments	5,611,821
Total	<u>5,702,475</u>
Uses of working capital:	
Property additions	123,982
Purchases of investments	<u>5,928,190</u>
Total	<u>6,052,172</u>
Decrease in working capital	<u>\$ (349,697)</u>
Changes in working capital:	
Cash	\$ (430,766)
Account receivable	(8,397)
Inventory	31,937
Other receivables	476,951
Other current assets	11,932
Loans payable	232,190
Accounts payable	(30,799)
Other current liabilities	<u>(632,745)</u>
Decrease in working capital	<u>\$ (349,697)</u>

See notes to financial statements.

**Pennsylvania Academy of the Fine Arts
Notes to Financial Statements
For the Year Ended December 31, 1979**

1. Summary of Significant Accounting Policies

The accompanying financial statements of the Academy have been prepared on the accrual basis. The significant accounting policies followed are described below to enhance the usefulness of the financial statements to the reader.

Fund Accounting

To ensure the observance of limitations and restrictions placed on the use of resources available to the Academy, its accounts are maintained in accordance with fund accounting. Under these principles resources for various purposes are classified for accounting and reporting purposes into funds established according to their nature and purposes. Separate accounts are maintained for each fund; however, in the accompanying financial statements, funds having similar characteristics have been combined into fund groups. Accordingly, all financial transactions have been recorded and reported by fund groups.

The assets, liabilities, and fund balances of the Academy are reported in three self-balancing fund groups as follows:

- ~ Operating funds, which include unrestricted and restricted resources, represent that portion of the Academy's expendable funds available for support of the Academy's operations.
- ~ Plant funds represent resources expended or restricted for acquisitions of property, plant, and equipment.
- ~ Endowment funds represent funds subject to restrictions of gift instruments requiring that for specified amounts of time or in perpetuity the principal be invested and only income be used.

Inventories

Inventories are recorded at the lower of first-in, first-out cost or market.

Deferred Exhibition Expenses

Exhibition expenses are deferred and amortized on a straight-line basis over the life of the exhibit.

Investments

Investments in marketable equity securities are carried at the aggregate lower of cost or market. Investments in bonds and other debt instruments such as U.S. Treasury notes are carried at cost. Real estate held for investment is carried at cost.

Property

Property purchased is recorded at cost. Property donated is recorded at fair value at date of donation. Depreciation is provided on a straight-line basis over the lives of the respective fixed assets.

Unrestricted Gifts and Grants

Unrestricted gifts and grants are recorded as revenue of the operating fund in the period specified by the donor.

Memberships

Memberships are recognized as revenue when payment is received.

Unexpended Restricted Contributions

Contributions to the Operating and Plant Funds when restricted by the donor are recorded as revenue or capital additions to the extent expenses have been incurred for the purposes specified by the donor.

Art Collection

In conformity with the practice followed by many museums, art objects purchased and donated are not included in the balance sheet.

Gifts of cash or other property donated for the purpose of acquiring art work are classified as unexpended restricted revenue until acquisitions are made. The cost of all art objects purchased or acquired by gift, less proceeds from deaccessions of art objects, is reported in the statement of activity as a separate program expense.

Functional Expense Allocations

Expenses of various program and other activities have been summarized on a functional basis in the statement of activity. Accordingly, certain expenses have been allocated among the programs and supporting services.

Capital Additions

Amounts classified as capital additions in the statement of activity represent gifts, grants or bequests restricted by the donor to Endowment or Plant Funds either permanently or for a period of time. Capital additions also include investment income and gains or losses on investments that must, due to donor or legal restrictions, be added to or deducted from principal.

2. Investments

Investments are presented on the basis described in Note 1. The following is the composition of the carrying and quoted market value of the investments at December 31, 1979:

	Carrying Value	Quoted Market Value
Bonds	\$3,119,900	\$3,045,388
Preferred stocks	48,425	118,875
Common stocks	1,532,944	3,613,184
Other	4,900	4,900
Total securities	4,706,169	<u>\$6,782,347</u>
Real estate	246,194	
Total	<u>\$4,952,363</u>	

3. Art Collection

The following is a summary of the cost of art objects purchased less proceeds from deaccessions as reported in the statement of activity for the year ended December 31, 1979:

Accession of art for collection	\$1,600
Less proceeds of deaccessions	—
Total	<u>\$1,600</u>

4. Property

A summary of property at December 31, 1979 is as follows:

Land and buildings	\$1,702,787
Building improvements	5,315,943
Furniture and fixtures	31,614
School library (books, periodicals, films, etc.)	238,576
Total	7,288,920
Less accumulated depreciation	1,288,654
Total	<u>\$6,000,266</u>

5. Retirement Plan

On May 10, 1965, the Academy established an informal Retirement Plan (as amended September 15, 1971). Under this plan the Academy had accounted for pension costs by charging expense as amounts were paid to retirees. Subsequent to December 31, 1978, the Academy determined that the informal Retirement Plan (informal Plan) was not in accordance with the Employee Retirement Income Security Act of 1974 (ERISA). Accordingly, on May 16, 1979, the Board adopted a resolution which rescinded the informal Plan and established a limited Retirement Plan (limited Plan) effective June 1, 1979. The limited Plan covers certain retired employees and four other employees and provides for retirement payments on the same basis as the informal Plan.

Based on the date of the latest actuarial evaluation, January 1, 1979, the present value of future benefits payable was approximately \$340,000. Retirement expense (including actuarial adjustment of present value) for the year ended December 31, 1979 was \$64,537.

6. Deferred Revenue – Restricted Contributions

The following is a summary of the change in deferred restricted contributions of the Operating and Plant Funds for the year ended December 31, 1979:

	Operating Fund	Plant Fund
Balance, January 1, 1979	\$ 44,786	\$237,875
Add – Contributions and bequests	792,048	32,207
Deduct – Expenditures	<u>(121,235)</u>	<u>(112,769)</u>
Balance, December 31, 1979	<u>\$715,599</u>	<u>\$157,313</u>

7. Agency

The Academy is acting as an Agent for a federal Basic Educational Opportunity Grant (BEOG). An authorization in the amount of \$112,806 was approved to the Academy during 1979. This amount is to be used over two terms, fall term 1979 and spring term 1980. Payments are made to those students who have successfully completed an

eligibility report with approval from BEOG authorities. The balance of the grant remaining, \$58,114, represents funds reserved for the spring term of 1980.

8. Reclassification of Certain Endowment Funds

During 1979 the Academy's Board had its legal counsel make a review of documents related to endowments to more precisely determine the continued applicability of endowment restrictions. This review resulted in the Academy reclassifying funds with Board-imposed restrictions and/or obsolete donor restrictions as unrestricted funds. The total amount of funds reclassified as a result of this review was \$1,151,682. Of this amount, \$912,881 was used to repay amounts owed to the Endowment Fund by the Operating Fund as a result of past borrowings. At December 31, 1979, the remaining funds (\$238,801) are included in the Operating Fund as unrestricted investments.

9. Administration Expenses

Certain expenses, such as payroll, insurance, retirement, security, etc., are classified in administration expenses on a responsibility basis rather than allocated to program expenses and supporting services on a functional basis.

Payroll and payroll taxes:

Administrative	Faculty	Staff	Models and other
Office	Telephone	Utilities	Bad debt write-off
Publicity	Dues and subscriptions	Travel	Teaching aids and visiting artists
Depreciation	Repairs and maintenance	Insurance	Postage
Publication	Professional fees	Other services	Cost of sales
Prizes	Accessions	Retirement	Miscellaneous
Security	Interest	Conservation	Consultant
Library	Membership	Exhibitions	Archives
Total Expenses			

Pennsylvania Academy of the Fine Arts
Supplemental Schedule of Expenses
For the Year Ended December 31, 1979

Program Expenses			Supporting Services			Other	Totals
School	Museum and Accessions	Total	Administration	Development	Total	Activities	
		\$ 247,544	\$264,219	\$ 73,492	\$337,711	\$155,139	\$ 492,850
\$247,544		247,544					247,544
206,275	\$189,551	395,826					395,826
69,298	12,313	81,611	11,148	1,819	12,967		94,578
4,919	625	5,544	18,118	667	18,785	6,942	31,271
8,573	8,602	17,175	8,230	1,120	9,350	2,081	28,606
82,207	51,268	133,475	27,730		27,730	11,437	172,642
						6,500	6,500
31,048	89	31,137	180	14,695	14,875		46,012
861	103	964	2,623	1,616	4,239		5,203
9,737	3,713	13,450	7,130	3,194	10,324		23,774
9,249		9,249					9,249
50,385	64,780	115,165	7,450		7,450	20,112	142,727
43,109	31,079	74,188	28,111	636	28,747	24,114	127,049
	46	46	21,280		21,280		21,326
16	273	289	13,453	5,240	18,693		18,982
				10,698	10,698	3,480	14,178
			29,409		29,409	1,200	30,609
			2,702		2,702	4,161	6,863
16,418	42,469	58,887				97,166	156,053
95,960		95,960					95,960
	1,600	1,600					1,600
			64,537		64,537		64,537
4,263	4,379	8,642	18,219	1,610	19,829	18,416	46,887
			29,474		29,474		29,474
			1,037		1,037		1,037
	32,990	32,990					32,990
			12,350		12,350		12,350
5,126		5,126					5,126
				13,986	13,986		13,986
6,878	75,380	82,258					82,258
			315		315		315
\$891,866	\$519,260	\$1,411,126	\$567,715	\$128,773	\$696,488	\$350,748	\$2,458,362



**BOARD OF TRUSTEES
ADVISORY BOARD
COMMITTEES OF THE BOARD**

Officers

Henry S. McNeil
President
Charles E. Mather III
Vice President
Charles J. Kenkelen
Treasurer
Richard J. Boyle
Acting Secretary
Rita P. Damiano
Comptroller

Board of Trustees

Mrs. Walter H. Annenberg
Walter G. Arader
Benjamin D. Bernstein (resigned
November 1979)
Mrs. James Biddle (resigned September 1979)
Mrs. James W. Cooke
Daniel W. Dietrich II
F. Eugene Dixon, Jr.
J. R. Drumwright
John Gribbel II
Frank T. Howard (resigned April 1979)
H. Lea Hudson
Arthur C. Kaufmann
John H. Keelan
Charles J. Kenkelen
Mrs. Nelson J. Leidner
Donald E. Meads
Clement B. Newbold, Jr. (resigned
June 1979)
Theodore T. Newbold
Bertram L. O'Neill
David N. Pincus
William A. Pollard
Herbert S. Riband, Jr.
Frank R. Veale
Robert G. Wilder
Mrs. John Wintersteen

Ex Officio

Joseph E. Coleman
City Representative, City Council Member
Robert W. Crawford
*City Representative, Commissioner of
Recreation*
George X. Schwartz
City Representative, City Council President
Elizabeth Osborne
Faculty Representative

Advisory Board

Mrs. Bertram D. Coleman
David Gwinn
Samuel M. V. Hamilton
Henry F. Harris
James M. Large
Mrs. Edward B. Leisenring, Jr.
Dr. John W. McCoubrey
John W. Merriam
C. Earle Miller
Frederick W. G. Peck
Mrs. Meyer P. Potamkin
Robert K. Scarborough
Orvel Sebring
Martin P. Snyder
James K. Stone
Charles J. Webb II
Grahame Wood
Andrew Wyeth

Committees of the Board

Executive

Henry S. McNeil
Chairman
Charles E. Mather III
Vice Chairman
Mrs. James W. Cooke
Daniel W. Dietrich II
Arthur C. Kaufmann
John H. Keelan
Charles J. Kenkelen
Mrs. Nelson J. Leidner
Herbert S. Riband, Jr.
Frank R. Veale

**Development, Membership and
Public Relations**

Mrs. James W. Cooke
Chairman
Mrs. Bertram D. Coleman
Vice Chairman, Membership
David N. Pincus
Vice Chairman, Development
Robert G. Wilder
Vice Chairman, Public Relations
Mrs. Walter H. Annenberg
Henry F. Harris
H. Lea Hudson
Arthur C. Kaufmann
Mrs. John C. Keene
Charles J. Kenkelen
Theodore T. Newbold
Bertram L. O'Neill
William A. Pollard
Mrs. Robert W. Preucel
Herbert S. Riband, Jr.
Mrs. Susan W. West
Robert G. Wilder

Nominating

Arthur C. Kaufmann
Chairman
Henry F. Harris
Vice Chairman
Mrs. Walter H. Annenberg
Walter G. Arader
Theodore T. Newbold
William A. Pollard
Mrs. Meyer P. Potamkin
Frank R. Veale
Charles J. Webb II
Mrs. John Wintersteen
Grahame Wood

Collections and Exhibitions

Charles E. Mather III
Chairman
Daniel W. Dietrich II
Vice Chairman
Benjamin D. Bernstein (resigned
November 1979)
Mrs. James W. Cooke
Mrs. Kenneth W. Gemmill
Mrs. H. Gates Lloyd
Dr. John W. McCoubrey
C. Earle Miller
Theodore T. Newbold
David N. Pincus
Mrs. Meyer P. Potamkin
Harold P. Starr
Frank R. Veale
Mrs. John Wintersteen

Finance

Charles J. Kenkelen
Chairman
Herbert S. Riband, Jr.
Vice Chairman
Mrs. James W. Cooke
Daniel W. Dietrich II
J. R. Drumwright
Henry F. Harris
Charles E. Mather III
Bertram L. O'Neill
Mrs. George Reath

Planning

Donald E. Meads
Chairman
Theodore T. Newbold
Vice Chairman
Mrs. Walter H. Annenberg
J. R. Drumwright
Mrs. J. H. Ward Hinkson
John H. Keelan
Charles J. Kenkelen
Mrs. Harry R. Neilson, Jr.
Charles J. Webb II

STAFF

Instruction

Daniel W. Dietrich II
Chairman
H. Lea Hudson
Vice Chairman
Will Barnet
Luther Brady
J. Welles Henderson
Charles E. Mather III
Dr. John W. McCoubrey
Charles Nichols
David N. Pincus
Mrs. Evan Randolph
Leonard Sylk
B. Watson
Mrs. Harleston R. Wood

Properties

John H. Keelan
Chairman
Bertram L. O'Neill
Vice Chairman
Mrs. L. Talbot Adamson
Charles J. Kenkelen
Theodore T. Newbold
Robert K. Scarborough
Charles J. Webb II

Peale Club

Frank R. Veale
Chairman
Mrs. Meyer P. Potamkin
Vice Chairman
Mrs. Bertram D. Coleman
David Geliebter
Mrs. John Gribbel II
David Gwinn
Mrs. Nelson J. Leidner
Robert G. Wilder

Office of the Director

Richard J. Boyle
Director
Marcela de Keyser
Administrative Assistant

Office of the Administrator

Harvey Gold
Administrator
Marian E. Kirwin
Administrative Assistant
Dorothy Armstrong
Housekeeper
Benjamin Aviles
Maintenance Assistant
William Bahmermann
Maintenance Supervisor, B. & C.
Dominick Barrett
Chief Engineer, B. & C.
Clara Barrile
Cashier
George Burger
Guard
Samuel Clark
Maintenance Assistant
William Coyle
Guard
Rita P. Damiano
Comptroller
Eddie Devera
Guard
James Drumm
Guard
Willie Floyd
Maintenance Assistant
Riley Floyd
Guard
Sidney Freedman
Guard
John Gallen
Guard
Paul Hagan
Chief of Security
Alice Harkabus
Guard
Edward Henderson
Guard
Michael Iacocca
Guard
H. Clay Johnson
Maintenance Assistant
Frederick Kelley
Sales Manager
Kevin Kyle
Engineering Assistant
Joseph Lehman
Guard
Stephanie Lestier
Museum Store Assistant
John Looney
Guard
William Loughnane
Guard

James Lulias
Building Superintendent – Peale House
Thomas Lulias
Assistant to Building Superintendent – Peale House
William Maguire
Guard
Myron Mitchel
Guard
Nora Murray
Cloakroom Attendant
Donis Myers
Guard
Joseph Pacifico
Guard
Raymond Pasternak
Accountant
Edward W. Poole, Jr.
Guard
Judith Schneider
Assistant to Comptroller
Rosalind Smart
Receptionist
Joseph Smith
Guard
Francis St. Clair
Guard
Barbara Tate
School Store Assistant
William Zweifel
Guard

The Museum

Frank H. Goodyear, Jr.
Curator
Kathleen A. Foster
Assistant Curator
Elizabeth A. Romanella
Assistant to the Curator
Joseph Amarotico
Conservator
James Conboy
Assistant Preparator
Ann Friedman
Morris Gallery Coordinator
Robert A. Harman
Rights and Reproductions
Elizabeth S. Kolowrat
Museum Education Director
Melinda McGough
Assistant Museum Registrar
Janice Stanland
Museum Registrar
Roman Tybinko
Preparator

**Office of Development, Membership
and Public Relations**

Elaine C. Breslow
*Development, Membership and Public
Relations Director*
Mary G. Hall
Assistant to the Development Director
Joy Harbeson
Development Secretary
Josephine Evans
Membership Coordinator
Anna Mang
Membership Secretary
Susan Rappaport
Public Information Officer
Susan Navarre
Public Information Assistant

Volunteers

Marcy Behr
Alex Cokos
Lesley Gold
Cynthia Holstad
Catherine C. Pasymowski

School

Ephraim Weinberg
Dean
Richard Ranck
Director of Counseling and Financial Aid
Patricia Byrne
Alumni Affairs Coordinator
Blanche Moore
Admissions Officer
Patricia Moyer
Secretary to the Dean
Marietta Bushnell
Librarian
Jill Rupinski
Registrar
Heidi Williams
Models and Properties Supervisor

Faculty

Joseph Amarotico
Jack Earl Barnett
Will Barnet
John Bolles
Thomas Chimes
Arthur De Costa
Murray Dessner
Adolph T. Dioda
Thomas Ewing
Lisabeth Marder Ferrell
Sidney Goodman
Paul A. Greenwood
Oliver Grimley
John G. Hanlen
Alexander Hromych
Homer Wayland Johnson
Ben Kamihira
Karl O. Karhumaa
Jimmy C. Lueders
William Martone
Stanley Merz, Jr.
Daniel Miller
Leon Wm. Omwake, Jr.
Elizabeth Osborne
Peter Paone
Henry C. Pearson
Mavis Pusey
Seymour Remenick
Bruce Samuelson
James F. Shores
David Slivka
Louis Sloan
Kim Sou
Roswell Weidner
Martha Zelt

Volunteers for Membership 1979

Mr. Henry Peter Borie
Mr. and Mrs. Robert Coyan
Mrs. Shirlene Coyne
Mr. Cadwalader Evans
Mr. Emlen Hutchinson Evans
Dr. and Mrs. Clair Frantz
Mrs. David Hillman
Mr. and Mrs. Steven Holstad
Mrs. Sidney Jelinek
Mr. and Mrs. B. Gordon Landis
Mr. and Mrs. Anton Lieberman
Mr. and Mrs. Samuel Madeira
Mr. Jude Plum
Mr. and Mrs. Thomas J. Reilly
Dr. and Mrs. G. Clayton Ryle
Mrs. Ellen Smith Shober
Mrs. Eileen Sloane
Mr. and Mrs. Philip Meade Smith
Mr. Richard Smith
Mrs. Sigmund Steinberg
Mrs. Patricia Willis



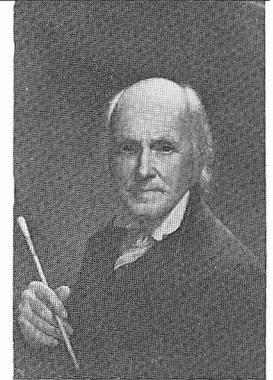
Award Days



THE CHARLES WILLSON PEALE SOCIETY

1979 Members

Benjamin and Lorraine Alexander
The Hon. and Mrs. Walter H. Annenberg
Mr. and Mrs. C. Wanton Balis, Jr.
Mr. and Mrs. Philip I. Berman
Mr. Benjamin D. Bernstein
Mr. C. Graham Berwind, Jr.
Mrs. Louisa C. Biddle
Mr. and Mrs. Frank G. Binswanger, Sr.
Mr. and Mrs. Frank G. Binswanger, Jr.
Mr. and Mrs. J. Bruce Bredin
Mrs. Henry W. Breyer, Jr.
Mrs. Clarence C. Brinton
Mr. and Mrs. Nathaniel Burt
Mr. and Mrs. Albert J. Caplan
Mrs. Edward C. Cassard
Mr. Walter Cerf
Mrs. C. Buck Churchman
Mrs. Avery B. Clark
Dr. Gerald R. Clark
Mr. and Mrs. Norman Cohn
Mr. and Mrs. Lammot duPont Copeland
Mr. and Mrs. R. Meyer de Schauensee
Mrs. Elliott R. Detchon, Jr.
Mr. and Mrs. William Dino
Mr. and Mrs. F. Eugene Dixon, Jr.
Mr. and Mrs. John T. Dorrance, Jr.
Mr. and Mrs. Jack Friedland
Mr. and Mrs. Kenneth W. Gemmill
Mr. Milton Ginsburg
Brig. Gen. and Mrs. William B. Gold
Mr. and Mrs. Frank H. Goodyear, Sr.
Mr. and Mrs. Eugene G. Grace, Jr.
Mrs. Robert McCay Green
Mr. and Mrs. John Gribbel II
Mr. and Mrs. Samuel M. V. Hamilton
Mr. and Mrs. Henry F. Harris
Mr. and Mrs. Robert A. Hauslohner
Mr. and Mrs. J. Welles Henderson
Mrs. J. H. Ward Hinkson
Mr. and Mrs. Frank T. Howard
Mr. and Mrs. H. Lea Hudson
Miss Constance A. Jones
Dr. and Mrs. Henry A. Jordan
Mr. and Mrs. John H. Keelan
Mr. and Mrs. Charles J. Kenkelen
Mr. and Mrs. A. Atwater Kent, Jr.
Mr. and Mrs. B. Gordon Landis
Mr. and Mrs. James M. Large
Mr. and Mrs. Rodney M. Layton
Mr. and Mrs. B. Herbert Lee
Mr. and Mrs. Howard H. Lewis
Mr. and Mrs. Fred Lieberman
Mrs. Edward S. Lower
Mr. and Mrs. W. James MacIntosh
Mrs. Crawford C. Madeira
Mr. and Mrs. Louis C. Madeira, IV
Mrs. Leon H. Magin
Mr. and Mrs. John Marion
Mr. and Mrs. Charles E. Mather, III
The Hon. and Mrs. John J. McDevitt, III
Mrs. Alan McIlvain
Mr. and Mrs. Samuel McKeel
Mr. and Mrs. Henry S. McNeil
Mr. and Mrs. Donald E. Meads
Mr. and Mrs. C. Earle Miller
Mrs. Knowlton D. Montgomery
Mr. and Mrs. Harry R. Neilson, Jr.
Mr. and Mrs. Bertram L. O'Neill
Mr. and Mrs. Frederick W. G. Peck
Mr. and Mrs. David N. Pincus
Mr. and Mrs. William A. Pollard
Mr. and Mrs. Meyer P. Potamkin
Mr. and Mrs. Herbert S. Riband, Jr.
Mr. and Mrs. Bayard H. Roberts
Mrs. George B. Roberts
Mr. and Mrs. Adolph Rosengarten, Jr.
Mr. and Mrs. Robert K. Scarborough
Dr. and Mrs. Harold G. Scheie
Mr. and Mrs. James M. R. Sinkler
Mr. and Mrs. Upton S. Sullivan
Mr. and Mrs. Sidney A. Tannenbaum
Mrs. Thomas D. Thacher
Mrs. Harrison Therman
Mr. and Mrs. E. Robert Thomas
Mr. Charles A. Tingley
Mrs. E. Miles Valentine
Mr. and Mrs. Henry M. Watts, Jr.
Mr. William White, Jr.
Mr. and Mrs. Robert G. Wilder
Mrs. John Wintersteen
Mr. and Mrs. Ben Wolf
Mr. and Mrs. Grahame Wood
Mr. and Mrs. Richard D. Wood
Mr. and Mrs. Charles Woodward
Mrs. Sidney L. Wright



Self-Portrait
Charles Willson Peale
Permanent Collection

**1979 Contributors to the Pennsylvania
Academy of the Fine Arts**

Foundations, Estates and Trusts

The Annenberg Fund
Charles Ulrick and Josephine Bay Foundation
Claneil Foundation, Inc.
Columbia Funds
Estate of Marion L. Dannenberg
The Daniel W. Dietrich Foundation, Inc.
The Downs Foundation
Estate of Pauline M. Graham Elliot
The Colin Gardner Foundation
H. J. Heinz II Charitable and Family Trust
Elizabeth S. Hooper Foundation
Independence Foundation
Morris and Sophie Kardon Foundation
Greta Brown Layton Charitable Trust
Christian R. and Mary F. Lindback Foundation
Estate of Jane M. Longmire
Lovett Foundation
Maneely Fund
Irving May and Edith H. May Foundation
The William Penn Foundation
Pennwalt Foundation
Pew Memorial Trust
Albin Polasek Foundation, Inc.
Sidney R. Rosenau Foundation
The John Frederick Steinman Foundation
The Tyson Foundation
Ware Foundation
Warwick Foundation

Businesses

AEL Industries, Inc.
Allstate Foundation
The Anchor Packing Company
Bally, Case & Cooler
Bell of Pennsylvania
Berwind Corporation
Stanley Blacker, Inc.
Burroughs Corporation
Campbell Soup
Colonial Penn Group, Inc.
Continental Bank
Day & Zimmermann, Inc.
The ESB Corporation
Film Makers of Philadelphia
Girard Bank
Hunt Manufacturing Co., Inc.
INA Foundation
IU International
Janney Montgomery Scott, Inc.
Johnson & Higgins of Pa., Inc.
Kennedy Galleries
Lewis & Gilman, Inc.
Marion Locks Gallery
The Maneely Fund (Wheatland Tube Co.)
Mather & Company
The Merck Company Foundation
Mitchell/Giurgola Architects
The Mutual Assurance Company
Pennbrook Foods

Philadelphia Saving Fund Society
Philadelphia Suburban Corporation
Pincus Brothers-Maxwell
Provident National Bank
The Prudential Insurance Co. of America
The Quaker Chemical Foundation
R. C. A.
Regional Retail Council, Greater Philadelphia
Chamber of Commerce:
Gimbels
Strawbridge & Clothier
John Wanamaker
Lane Bryant
F. W. Woolworth
Reliance Insurance Companies Foundation
Rohm and Haas Company
Saul, Ewing, Remick & Saul
Ship 'N Shore, Inc.
Sun Company
United Engineers & Constructors, Inc.
Yarway Foundation

Individuals

Mr. Edward F. Adolph
Benjamin and Lorraine Alexander
Mr. and Mrs. J. Forsyth Alexander
The Hon. and Mrs. Walter H. Annenberg
Mr. Walter G. Arader
Mrs. Bette Beggs Ashford
Mr. and Mrs. C. Wanton Balis, Jr.
Mr. Joseph Barbieri
Mr. Richard C. Bechtel
Mr. and Mrs. Philip I. Berman
Mr. Benjamin D. Bernstein
Mr. Edward Bernstein
Mr. C. Graham Berwind
Mrs. James Biddle
Mr. and Mrs. Frank G. Binswanger, Sr.
Mr. and Mrs. Frank G. Binswanger, Jr.
George W. Borkovic, M.D.
Mr. Richard J. Boyle
Dr. Luther W. Brady
Mr. and Mrs. J. Bruce Bredin
Dr. and Mrs. I. H. Breslow
Mrs. Henry W. Breyer
Mrs. Clarence C. Brinton
Mrs. Moreau D. Brown
Mr. and Mrs. Nathaniel Burt
Mrs. David C. Burton
Mr. and Mrs. Albert J. Caplan
Mrs. Edward C. Cassard
Mr. Walter Cerf
Mrs. C. Buck Churchman
Dr. and Mrs. Henry E. Clare
Mrs. Avery B. Clark
Dr. Gerald R. Clark
Mr. and Mrs. Norman Cohn
Miss Lillian A. Collins
Mrs. James W. Cooke
Mr. and Mrs. Lamot duPont Copeland
Mr. and Mrs. James A. Deane
Mr. and Mrs. R. Meyer de Schauensee
Mrs. Elliott R. Detchon, Jr.

Mr. Daniel W. Dietrich, II
Mr. and Mrs. William Dino
Mr. and Mrs. F. Eugene Dixon, Jr.
Mr. and Mrs. John T. Dorrance, Jr.
Mr. J. R. Drumwright
Mr. and Mrs. Joseph N. DuBarry, IV
Mr. and Mrs. F. W. Elliott Farr
Mrs. Lisabeth Ferrell
Mr. and Mrs. Jack Friedland
Mr. and Mrs. John F. Garber
Mr. and Mrs. Kenneth W. Gemmill
Mr. Milton Ginsburg
Brig. Gen. and Mrs. William B. Gold, Jr.
Mr. and Mrs. Frank H. Goodyear, Sr.
Mr. and Mrs. Eugene G. Grace
Mrs. Robert McCay Green
Mr. and Mrs. John Gribbel, II
Mr. and Mrs. Robert A. Gronlie
Mr. and Mrs. Harold A. Haines, Jr.
Mr. and Mrs. Samuel M. V. Hamilton
Mr. and Mrs. Henry F. Harris
The Harrisburg Docents
Mr. and Mrs. Robert A. Hauslohner
Mr. and Mrs. J. Welles Henderson
Mrs. J. H. Ward Hinkson
Mr. and Mrs. Frank T. Howard
Mr. and Mrs. H. Lea Hudson
Mrs. Stewart Huston
Mr. and Mrs. Orton P. Jackson
Miss Constance A. Jones
Dr. and Mrs. Henry A. Jordan
Mr. Arthur C. Kaufmann
Mr. and Mrs. John H. Keelan
Mr. Robert K. Keller
Mr. and Mrs. Paul E. Kelly
Mr. and Mrs. Charles J. Kenkelen
Mr. and Mrs. A. Atwater Kent, Jr.
Mrs. A. Bodine Lamont
Mr. and Mrs. B. Gordon Landis
Mr. James M. Large
Mr. and Mrs. Rodney M. Layton
Mr. and Mrs. B. Herbert Lee
Mrs. Nelson J. Leidner
Mr. Henry W. Lewis
Mr. and Mrs. Howard H. Lewis
Mr. and Mrs. Fred Lieberman
Mrs. H. Gates Lloyd
Mrs. Graeme Lorimer
Mrs. Edward S. Lower
Mr. and Mrs. W. James MacIntosh
Mrs. Crawford C. Madeira
Mr. and Mrs. Louis C. Madeira, IV
Mrs. Leon H. Magil
Mr. and Mrs. John Marion
Mr. and Mrs. Charles E. Mather, III
The Hon. & Mrs. John J. McDevitt, III
Mrs. Alan McIlvain
Mr. and Mrs. Sam S. McKeel
Mr. and Mrs. Henry S. McNeil
Mr. and Mrs. Donald E. Meads
Mr. and Mrs. C. Earle Miller
Mrs. Knowlton D. Montgomery
Mr. and Mrs. Harry R. Neilson, Jr.
Mr. Theodore T. Newbold

Dr. Charles Warren Nichols
Mr. and Mrs. Bertram L. O'Neill
Mrs. Tanis Page
Dr. and Mrs. George W. Paschal
Mr. Horace A. Paul
Mr. and Mrs. Frederick W. G. Peck
Mr. and Mrs. David N. Pincus
Mr. and Mrs. William A. Pollard
Mr. and Mrs. Meyer P. Potamkin
Mr. Stephen F. Raab
Mrs. Evan Randolph
Mrs. George Reath
Mr. and Mrs. Herbert S. Riband, Jr.
Mr. and Mrs. Bayard H. Roberts
Mrs. George B. Roberts
Mr. George E. Robinette
Dr. Leonard Rosen
Mr. and Mrs. A. G. Rosengarten, Jr.
Mr. and Mrs. Robert K. Scarborough
Dr. and Mrs. Harold G. Scheie
Mr. and Mrs. Robert Scholle
Mr. and Mrs. Frank Schwartz
Mr. and Mrs. James M. R. Sinkler
Dr. Claiborne T. Smith, Jr.
Mrs. Mary L. Smith
Mr. Francis Speight
Mrs. S. Emlen Stokes
Ms. Marion Boulton Stroud
Mr. and Mrs. Upton S. Sullivan
Mr. and Mrs. S. A. Tannenbaum
Mrs. C. Newbold Taylor
Mrs. Thomas D. Thacher
Mrs. Harrison Therman
Mr. and Mrs. Robert E. Thomas
Mr. Charles A. Tingley
Mr. and Mrs. James W. Toren
Mrs. E. Miles Valentine
Mr. Frank R. Veale
Mr. and Mrs. Henry M. Watts, Jr.
Mr. Charles J. Webb, II
Mr. and Mrs. Roswell Weidner
Mrs. William H. S. Wells
Mr. Harry F. West
Mr. William White, Jr.
Mr. Jesse R. Wike
Mr. and Mrs. Robert G. Wilder
Mrs. John Wintersteen
Mr. and Mrs. Ben Wolf
Women's Committee, Pennsylvania Academy
of the Fine Arts
Mr. and Mrs. Grahame Wood
Mr. and Mrs. Richard D. Wood
Mr. and Mrs. Charles H. Woodward
Mrs. Sidney L. Wright

Government

City of Philadelphia,
Department of Recreation
Commonwealth of Pennsylvania,
Pennsylvania Historical and Museum Commission
National Endowment for the Arts
National Endowment for the Humanities
Pennsylvania Council on the Arts



THE PENNSYLVANIA ACADEMY OF THE FINE ARTS

BROAD AND CHERRY STREETS PHILADELPHIA, PA 19102

Non-Profit Org.
U.S. POSTAGE
PAID
Philadelphia, PA
Permit no. 2879
