

April
2010



Newsletter of the Palm Beach County Chapter of the Florida Native Plant Society

Garden Maintenance Party

Saturday, April 17, 2010
9:00 am—12:00 pm
Clayton Hutcheson Building



Come help us tidy up our native display garden. Bring your hat, gloves, hand tools, and water. NOTE: Brunch will be provided!

Sneak Preview of Coming Attractions

Apr 25 — South County Native Yard Tour
May 18— Night with the Natives
May 29 — Gumbo Limbo Nature Center Field Trip
Jun 15 — On the Trails at the Wakodahatchee Wetlands
Jun 26 — Wakodahatchee Field Trip
Jul 20 — The Formation of the Everglades



April Chapter Meeting

Tuesday, April 20, 2010

7:30 – 9:00 pm (doors open at 7)

Mounts Botanical Garden (UF/IFAS Extension)
531 North Military Trail, West Palm Beach, FL 33415

Bidder's
Package on
pg. 6

The Palm Beach Chapter of the
Florida Native Plant Society
cordially invites you to the

2010 Native Plant Auction

This Year's Themes

Wildflower Meadow
Fragrant White Moon Garden
Florida's Flowering Vines
Rare Woods of Florida
Rufino's Easy to Grow Treasures
Great Natives with Unfortunate Names

Stoppers: The Complete Collection
Ironwood Collection
Carnivorous Plants
Native Passion Vines
A Ghost of an Orchid...

See page 6 for a complete list of plants

And...Don't forget about the great Silent Auctions!

Featuring more rare plants, books,
crafts & garden related items!

MC...Rufino Osorio
Author of 'A Gardener's Guide to Florida Native Plants'

Free Admission • Refreshments • Native Plant Raffle
Public Welcome • No Reservations Needed

The Florida Native Plant Society promotes the preservation of our native flora through education and conservation. To attract wildlife, promote water conservation and prevent the further introduction of non-native pest plants, the society encourages the cultivation of nursery-propagated Florida native plants and promotes their use as ornamentals in public and private landscapes.

Inspiration + Heart = Impact: The Story Behind the Loxahatchee River Center's Migratory Bird Garden

by *Nathalie McCrate*

The Canon Envirothon is the largest high school environmental education competition in North America. At regional, state, and national levels, students compete through written and oral examinations in areas of forestry, aquatics, soils, wildlife, and current issues. The Palm Beach County Envirothon is unique as it requires that participants initiate an environmentally-related action project.

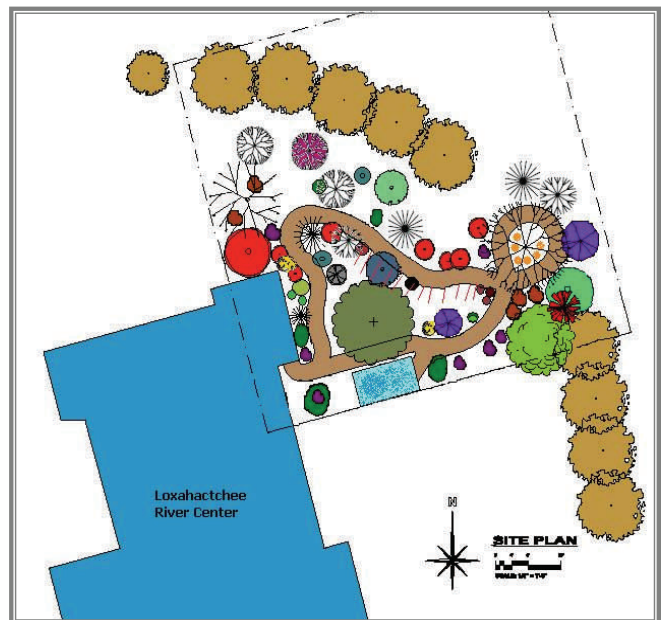
Our Envirothon team, *Elementz*, began the Loxahatchee River Migratory Bird Garden project as high school sophomores in the Fall of 2007. Inspired by our devoted teacher and avid bird-watcher, **Phil Weinrich**, we decided to create a migratory bird garden in order to restore a piece of degraded land behind the soon-to-be-constructed Loxahatchee River Water Management District's River Center. We wanted to create a haven of native foliage to benefit the bird populations that use southeast Florida as their flyway down south during the winter months. Because of the site's proximity to the anticipated River Center, we also hoped that our migratory bird garden would serve as an important and influential educational exhibit on the advantages of native plants. Due to the growing problem of habitat fragmentation and deforestation, we felt that our project aim was especially crucial.

Our Envirothon team managed every single aspect of the project. The first step was to gain the Loxahatchee River Water Management District's permission to restore the property, survey the site, come up with an appropriate trail design plan, as well as conceptualize a landscape. We pored over native planting books and took advice from professionals from local garden clubs, nature preserves, and native plant nurseries to make our plant selections—which were directed at providing the four vital elements of wildlife habitat: food, shelter, water, and cover.

With assistance from our coach, our team worked with a landscape architectural firm to create a CAD-formatted landscape design plan for our envisioned garden. We contacted local businesses and environ-

mental-science organizations in order to raise the necessary funds for our project. Our team removed all invasive exotic plant species from the garden site and cleared it for planting. With the assistance of an adult supervisor, our team purchased, measured, sawed, and nailed in the trail timbers. We carefully positioned and planted our vegetation selections. We installed a drip irrigation system, then placed drip heads on each individual shrub, tree, and flower. Afterwards, we mulched the garden. As a final touch, the River Center placed an educational kiosk at the entrance of our garden.

Since that first year, our team added more plantings, installed a small water fountain, put in benches, created an informative brochure on the benefits on native plantings, established a monthly native plants lecture program, and continued main-



tenance of the garden (e.g. weeding, re-mulching the trail, replacing trail timbers, etc.). We also hosted community events, such as FPL's "Power to Care Day" (a volunteerism event), and we led an "Eco-Action" Interest Project workshop for a recent Girl Scout program.

Over the past three years, the garden has attracted numerous wildlife species, including the rare and

Inspiration + Heart = Impact (cont.)

threatened blue atala butterfly. Palm Beach County has gained a beautifully restored piece of natural habitat, a valuable educational exhibit, and an important community outreach tool. Our team has devoted over 800 collective hours to the creation and continuation of the Loxahatchee River Migratory Bird Garden.

Through our project we learned a lot about the power of taking initiative. We found the truth in Margaret Mead's saying: "Never doubt that a small group of thoughtful, committed citizens can change the world. Indeed, it is the only thing that ever has." It brings our team great satisfaction to know that we helped create a sanctuary that will only become more beautiful as the years progress, and the trees, shrubs, vines, and flowers we planted ripen and mature. Our garden is a testament to perseverance, hard work, determination, and commitment—a legacy that continues to live on at 805 North US Highway 1, Jupiter.

Envirothon Team 'Elementz' Members 2007-2010:
Lillian McBee, Nathalie McCrate, Sara Miller, Nicole Casuso, Alex Ahrenholz, Caitlyn Brandt, Savannah Abel, Stephanie McCrate.

You can read more about the Florida Envirothon program at:

flenvirothon.com



Elementz team members (Jupiter High School) contributed over 800 working hours to plan and implement their native plant garden dream.

Note: Jupiter High School Envirothon Team 'Elementz' won 1st place in action project for the past two years. In 2009, they advanced through county and state competition to place 6th nationwide, competing against 51 other teams from U.S. states and Canadian provinces. Their success is due in a large part to the excellent guidance of Mr. Phil Weinrich, their coach and lead teacher at Jupiter Environmental Research and Field Studies Academy. His dedication to the program and his passion for the outdoors has been a true inspiration!

Bird Notes

by Ann Weinrich

Northern mockingbirds (*Mimus polyglottos*) usually chow down on fruit, but if you've ever looked closely at the berries on Florida privet (*Forestiera segregata*), you've sure wondered why. We have one privet in our yard, and the mockers don't let one berry pass their notice without scarfing it down. Of course, this is only one of the many fruits they eat, but the privet is right outside our dining room window, so when I'm eating my fruit, I see the mockers eating theirs. Plant some privet!



Photo by Calibas



Ask an Expert

Have a question about Florida's native plants? Send us your question and we'll find an expert to answer it. Selected questions and answers will be posted in the *Ask an Expert* section each month. Send your question to:



Dahoon@mindspring.com

Membership at a Glance

Business	7
Contributing	8
Donor	2
Family	28
Individual	104
Library	1
Life	2
Not for profit	5
Student	2
Supporting	3
Total	162

Upcoming Events

Saturday, April 10

Naturescaping

JD MacArthur Beach State Park

All Day

Volunteers are needed and suggestions are welcome for plant vendors, ideas for display, i.e. butterfly garden, etc. Contact Lindy Cerar (**561-312-0660**) with suggestions and availability.

Saturday, April 17

Get Your Hands Dirty!

Mounts Botanical Garden

9:00 am – 12:00 pm Come and learn from experts as you help us maintain our Native Plant Demonstration Garden. It's a great opportunity to ask questions, identify plants, and take home cuttings for your garden. Drop by anytime between 9:00 am and noon to learn, socialize, and enjoy brunch in the open air. Don't forget to bring your garden tools if you have them! For information call 561-247-FNPS (3677)

The Great American Cleanup

Gumbo Limbo Nature Center

8:00—11:00 am Join volunteers from the community for an annual beach cleanup. Pre-registration is required, at which time you will be given additional information. Space is limited. Email Susan Elliott at selliott@myboca.us to register, or call **561-338-1542**.

Sunday, April 25

Native Plant Yard Tour

South County

Local native plant yards and volunteers are needed for the 2010 tour. If you live in, around or between Boca Raton and Boynton Beach, please consider participating in this fun annual event! Please call (**561**) **247-FNPS (3677)** for more details.

Tuesday, May 18

Night with the Natives

Mounts Botanical Garden

7:30 – 9:00 pm

Join us at the Native Demonstration Garden while we stargaze and listen for the crickets.

Membership Update

Our chapter has 162 members as of March 31. We have five new members this month. Warm welcomes to **Nick Campbell & Valorie Larson, Eric Ludwig, Kay Gates, Christina Perez, and Kristin Vaughan**. March was the Life Membership anniversary for **Mathew Mierzwa**. Ten memberships renewed or rejoined in March. **Rosa & Joseph Durando** renewed as contributing members. Renewing individual members are **Sharon Ewe, Jan Beljan, Lindy Cerar, William Edmunds, Livia Pepper, and Terry Walker**. Our renewing family members are **Cathy Beals and Keith Blake**.

Gardening with the Natives

SNOWBERRY (*Chiococca alba*)

Snowberry is a moderate to fast-growing, vine-like shrub native to the coastal counties of peninsular Florida. This evergreen shrub has attractive shiny, dark-green leaves. It can grow up to ten feet tall in Florida, especially when supported by other plants. Standing alone, however, snowberry usually collapses under its own weight and stays low.

Snowberry forms rows of white to yellow fragrant hanging bell-shaped flowers up and down its thin branches. While found flowering throughout the year, the heaviest blooms occur from late spring through summer. Attractive though the flowers may be, it is the distinctive fruit that gives snowberry its name. The beautiful, sparkling-white, round clusters of berries are striking against the dark-green foliage. At times, the flowers and fruit occur at the same time which can produce a stunning effect.

In its native habitat, snowberry is found at the edges of hammocks and thickets. Snowberry generally grows best when it receives only light shade. In deep shade it will not bloom as it should

and, conversely, direct sun for even a couple of hours and it will fry. Soils should be well drained with a little organic matter. Poorly drained soils are usually not tolerated. Dur-

The root bark of snowberry is employed in Brazilian traditional medicine to treat rheumatic disorders and is currently under investigation as a potential pharmaceutical.

ing periods of prolonged drought, some supplemental watering should be applied for younger plants. Snowberry is the perfect native plant for small gardens. This sprawling shrub can be mounted upon a trellis and trimmed to any desired shape



Snowberry's distinctive clusters of white fruit are often visited by foraging birds.

or height. For some real fun, try training snowberry as a creative espalier!

This plant is available at many native nurseries. To find nurseries that carry it, visit the association of Florida Native Nurseries at www.afnn.org, but don't stop there. The site provides only a snapshot of the offerings at local nurseries, so call around.



2010 Native Plant Auction

Bidder's Package

Here is a preview of the wonderful plant collections slated for this year's auction block.
Don't miss this special event!

Tuesday, April 20
7:30 – 9:00 pm (doors open at 7)
Mounts Botanical Garden
531 North Military Trail, West Palm Beach, FL

Wildflower Meadow

Yellowtop - *Flaveria sp.*
Blazing star - *Liatris sp.*
Pineland lantana - *Lantana involucrata*
Ironweed – *Veronica sp.*
Rabbit tobacco - *Pseudognaphalium obtusifolium*
Pineland heliotrope – *Heliotropium polyphyllum*
Purple thistle – *Cirsium horridulum*
Blue eyed grass – *Sisyrinchium angustifolium*
Bird pepper - *Capsicum annuum* var. *glabriusculum*

Rare Woods of Florida

Satinwood - *Zanthoxylum flavum*
Torchwood - *Amyris elemifera*
Princewood - *Exostema caribaeum*

Fragrant White Moon Garden

Seven year apple - *Genipa clusiifolia*
Rough velvetseed - *Guettarda scabra*
Hammock velvetseed - *Guettarda elliptica*
Dwarf strongbark - *Bourreria radula*
Randia - *Randia aculeata*
Moonvine - *Ipomoea alba*

Ironwood Collection

White ironwood - *Hypelate trifoliata*
Red ironwood - *Reynosia septentrionalis*
Black Ironwood - *Krugiodendron ferreum*

Florida's Flowering Vines

Jacquemontia- *Jacquemontia curtisii*
Allamanda - *Allamanda cathartica*
Limbercaper - *Capparis flexuosa*
Coral honeysuckle - *Lonicera sempervirens*

A Famous Orchid

Ghost orchid - *Dendrophylax lindenii*

Carnivorous Plant Collection

Threadleaf sundew - *Drosera filiformis*
Small butterwort - *Pinguicula pumila*
Primrose-flowered butterwort - *Pinguicula primuliflora*
Whitetop pitcher plant - *Sarracenia leucophylla*
Bladderwort - *Utricularia sp.*
Pitcher plant hybrids - *Sarracenia* hybrids

Great Natives with Unfortunate Names

American toadwood - *Cupania glabra*
Wild dilly - *Manilkara jaimiqui* subsp. *emarginata*
Bahama manjack - *Cordia bahamensis*
Fishfuddle - *Piscidia piscipula*
Chiggery grapes - *Tournefortia hirsutissima*

Stoppers: The Complete Collection

White stopper - *Eugenia axillaris*
Spanish stopper - *Eugenia foetida*
Redberry stopper - *Eugenia confusa*
Simpson stopper - *Myrcianthes fragrans*
Red stopper - *Eugenia rhombea*

Rufino's Easy to Grow Treasures

Rufino's special selection of choice natives

FL Native Passion Vines for Butterflies

Purple passionflower - *Passiflora incarnata*
Yellow passionflower - *Passiflora lutea*
White passionflower - *Passiflora multiflora*
Pineland passionflower - *Passiflora pallens*
Goatsfoot passionflower - *Passiflora sexflora*
Corkystem passionflower - *Passiflora suberosa*

Silent Auction Items

Lignum vitae - *Guaiacum officinale*
Sea lavender - *Argusia gnaphalodes*
Mastic tree - *Sideroxylon foetidissimum*
Biscayne prickly ash - *Zanthoxylum coriaceum*

Native Plant Yard Tour – South County

Sunday, April 25, 2010

This year our chapter will focus the native yard tour on the south end of the county from Boynton Beach to Boca Raton. We have an excellent line up of native yards this year and our hosts are excited to share their yards with you. For more information, including maps and directions, visit palmbeach.fnpschapters.org For other inquiries, please contact **Stephanie Brown** at (561) 758-3679 or scb17611@hotmail.com.



Dennis Giardina shares his knowledge of the strand with soggy-footed FNPS members.

Thank You: Mike Owens and Dennis Giardina led an excellent field trip to the Fakahatchee Strand last month. Thirty field trippers waded through the swamp in search of the elusive ghost orchid (several were seen!). A good time was had by all, despite the numerous unintended “dips” in the swamp.



Campyloneurum costatum in the Strand. Photo by Joe Libertucci



Jane Thompson

Indian Trails Native Nursery

~ Native Plants for Florida's Wildlife ~

6315 Park Lane West, Lake Worth, FL 33467

561-641-9488 fx: 561-641-9309

InjnTrails@Aol.com

10% Off

Discount Coupon



Florida Native Plant Society

Palm Beach County
Chapter

suzdingwell@gmail.com

(561) 247-FNPS
(3677)



Visit us on the web
palmbeach.fnpschapters.org

Or come Tweet with us....

twitter.com/palmbeachfnps

The **Dahoon** is published monthly except December by the Palm Beach County Chapter of the Florida Native Plant Society. Newsletter subscription is included in membership fees paid to the FNPS.

PRINTED ON RECYCLED
PAPER

*Promoting the preservation, conservation, and restoration
of the native plants and native plant communities of Florida*

Florida Native Plant Society
Palm Beach County Chapter
534 29th Street
West Palm Beach, FL 33407

Membership Renewal
«Renewal»

«FirstLastName»

«OrgNameOtherName»

«StreetAddress»

«City», «State» «Zip»



Newsletter of the Palm Beach County Chapter of the Florida Native Plant Society

Officers & Chairpersons

President-**Sue Dingwell**
818-9654, suzdingwell@gmail.com

Vice-President-**Brenda Mills**
315-1842, bmills@sfwmd.gov

Treasurer-**Matthew King**
585-0114, opuntia2@msn.com

Secretary-**Cathy Beals**
799-4007, bealsc@bellsouth.net

Chapter Representative-**Lynn Sweetay**
798-6208, lynnsweetay@hotmail.com

Conservation Chair-**Michael Manna**
Director at Large-**Alyssa Dodd**

Director at Large-**Mary Jo Aagerstoun**
Director at Large-**Carl Terwilliger**

Education Chair-**Lindy Cerar**
312-0660, lindycerar@yahoo.com

Field Trip Coordinator-*open*

Landscape Chair-**Robert Hopper**

Membership Chair-**Dennis de Zeeuw**
954-560-4771, dennis@sustain-scape.com

Newsletter Publishers-**Myrna Sossner & Nancy Sloane** 832-2547, mandn29@aol.com

Newsletter Editors-**LeRoy & Shari Rodgers**
741-3395, dahoon@mindspring.com

Publicity Chair-**Jeff Nurge**
278-3299, jeffrem@bellsouth.net

PALM BEACH COUNTY CHAPTER
FLORIDA NATIVE PLANT SOCIETY
MEETS

**3rd Tuesday of the month
7:30 P.M.**

(doors open at 7:00)
Mounts Botanical Garden Auditorium
531 North Military Trail
(1/4 mi north of Southern Blvd.)
West Palm Beach, Florida

**Meetings are free and open
to the public.**