

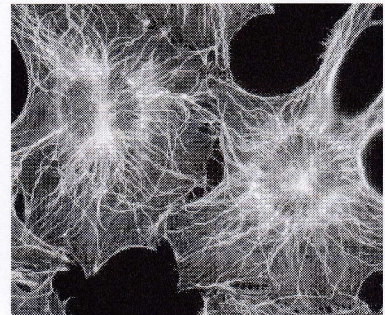
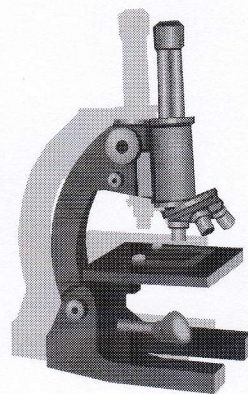
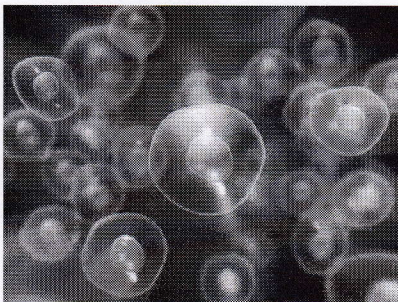
Park Main High School

S1

CfE

# Cells & Reproduction

## Homework Booklet



Name:

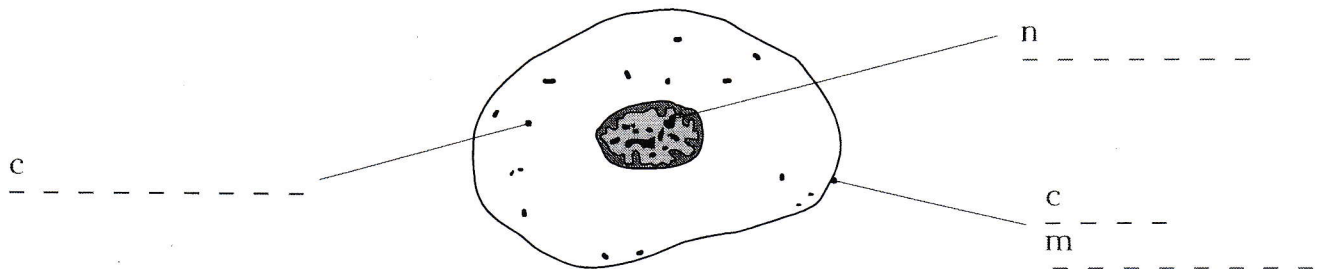
Teacher:

# Homework 1

## Animal cells

- Label the parts of this animal cell using the words in the box.

nucleus	cell membrane	cytoplasm
---------	---------------	-----------

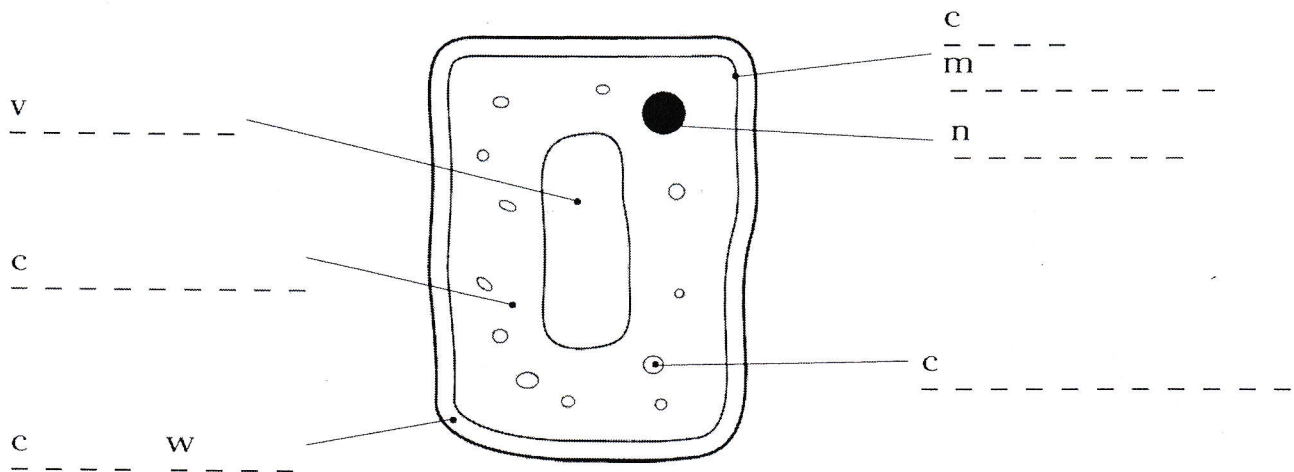


- Which part is like a thin skin around the cell? \_\_\_\_\_
- Which part controls the cell? \_\_\_\_\_

## Plant cells

- Label the parts of this plant cell using the words in the box.

nucleus	cell wall	cytoplasm	cell sap
vacuole	cell membrane	chloroplast	



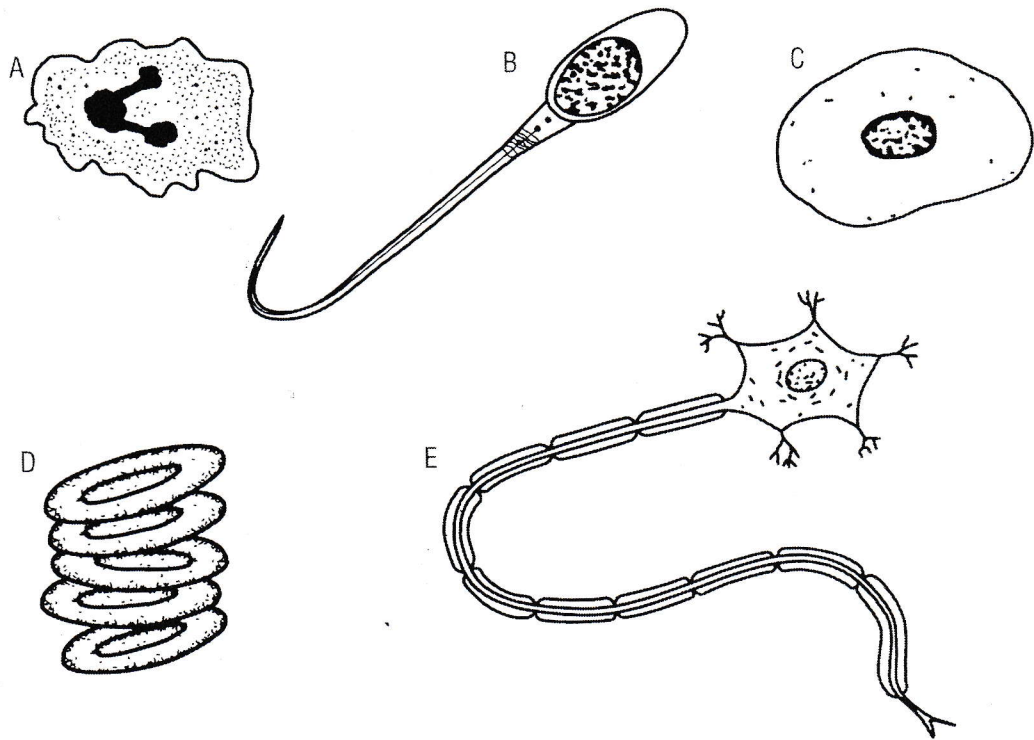
- Which three parts do plant cells and animal cells both have? n  
c m c \_\_\_\_\_
- Which parts of a plant cell trap light energy? c  
\_\_\_\_\_
- What is kept in the vacuole? c s  
\_\_\_\_\_



Look at diagrams A, B, C, D and E.

Read the descriptions below, numbered 1–5.

Can you match each diagram to the correct description?



- 1** Red blood cells are disc-shaped and concave (dented) on both sides. They have no nucleus and only live for about 4 months.
- 2** Sperm cells are the male sex cells. They have a head with a large nucleus and a whip-like tail for swimming to the egg.
- 3** White blood cells are colourless and have an irregular shape. They often have a branched nucleus.
- 4** Nerve cells have part of the cell drawn out like a wire. They carry messages between the brain and the rest of the body.
- 5** Skin cells are flat and thin. They have a round shape and a large, oval nucleus.

# Homework 2

1 a On the diagrams, label the parts described in the sentences with the letters. The first one has been done for you.

A where female sex cells are made

E where male sex cells are made

B where a baby could develop

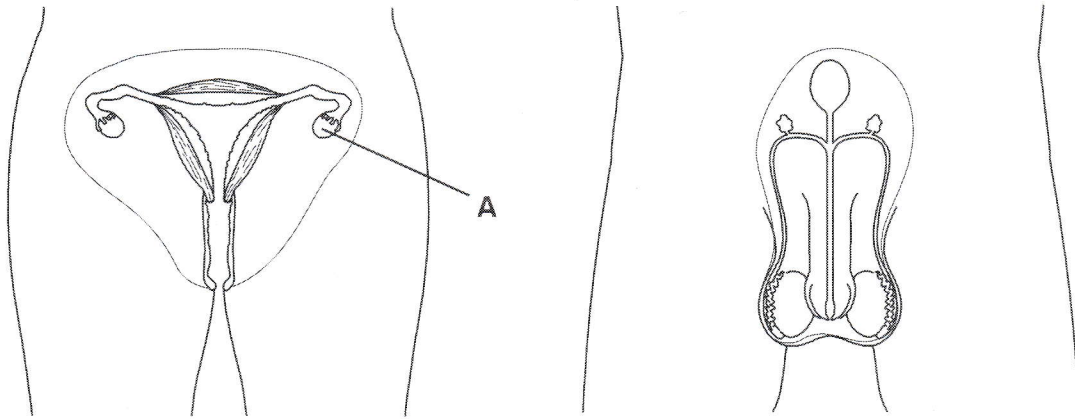
F egg cells travel along this tube

C adds special fluids to sperm cells

G protects the head of the penis

D tube leading to the uterus from outside

H holds the testes



b Write the letters from part a next to the names.

ovary \_\_\_\_\_ testis \_\_\_\_\_

foreskin \_\_\_\_\_ uterus \_\_\_\_\_

scrotum \_\_\_\_\_ vagina \_\_\_\_\_

2 Which of these are tubes that sperm cells go through when leaving the body? Tick two boxes.

oviduct     sperm duct     urethra     uterus     vagina

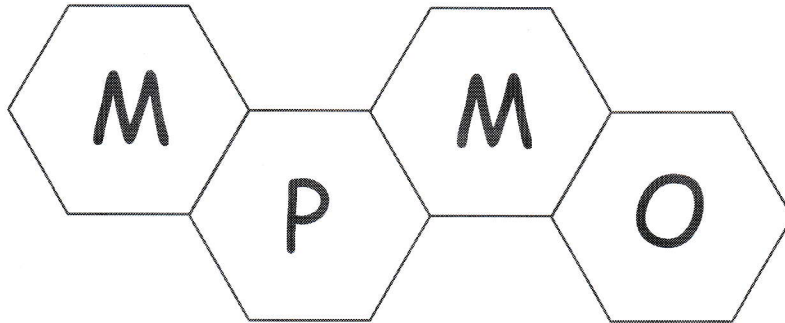
3 Which of the following is an adaptation of an egg cell? Tick one box.

- large cytoplasm containing a food store
- small cytoplasm to allow it to be light and streamlined
- a tail to allow it to swim
- chemicals to allow it to attack other cells

[Type text]

# Homework 3

1 Write one word answers to the following

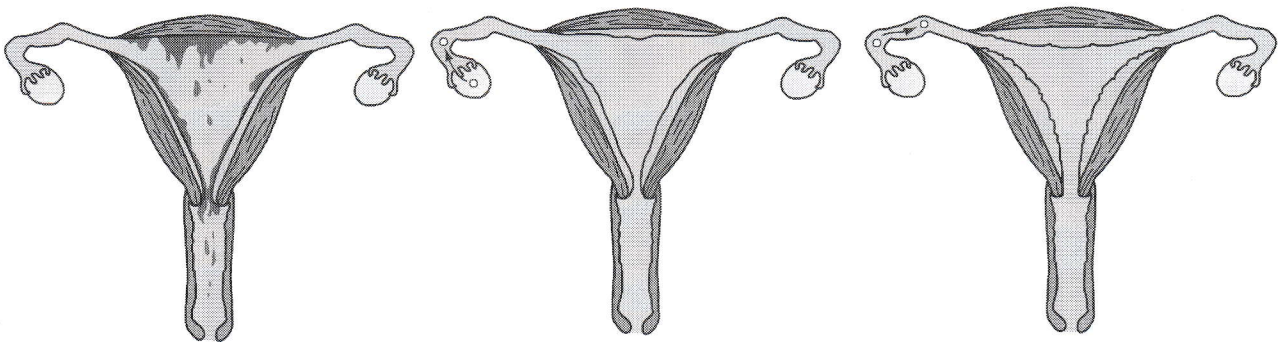


- a What M is the lining of the uterus breaking apart? \_\_\_\_\_
- b What P is the lining and blood passing out of the vagina? \_\_\_\_\_
- c What M is when an egg cell prepares to be let out of an ovary? \_\_\_\_\_
- d What O is when an egg cell is let out of the ovary? \_\_\_\_\_

2 How long does each menstrual cycle last? Tick the correct box.

- about 7 days
- about 28 days
- about 100 days

3 Number these drawings 1 to 3 to show the correct sequence of the menstrual cycle.





# Homework 4

It has been suggested that every person in the UK MUST provide a DNA sample to be analysed and placed on the National DNA Database.

Do you think that this should be the case?

Find out about *Genetic fingerprinting* and be prepared to come to class with your own opinion of whether we should have a National DNA Database or not.