

# World Journal of *Radiology*

*World J Radiol* 2017 April 28; 9(4): 148-216



### EDITORIAL

- 148 New era of electronic brachytherapy  
*Ramachandran P*

### REVIEW

- 155 "Beyond saving lives": Current perspectives of interventional radiology in trauma  
*Singh A, Kumar A, Kumar P, Kumar S, Gamanagatti S*

### MINIREVIEWS

- 178 Imaging spectrum of spinal dysraphism on magnetic resonance: A pictorial review  
*Kumar J, Afsal M, Garg A*

### ORIGINAL ARTICLE

#### Basic Study

- 191 Segmentations of the cartilaginous skeletons of chondrichthyan fishes by the use of state-of-the-art computed tomography  
*McQuiston AD, Crawford C, Schoepf UJ, Varga-Szemes A, Canstein C, Renker M, De Cecco CN, Baumann S, Naylor GJP*
- 199 Gd-EOB-DTPA based magnetic resonance imaging for predicting liver response to portal vein embolization  
*Szklaruk J, Luersen G, Ma J, Wei W, Underwood M*

#### Retrospective Study

- 206 C-reactive protein and radiographic findings of lower respiratory tract infection in infants  
*Twomey M, Fleming H, Moloney F, Murphy KP, Crush L, O'Neill SB, Flanagan O, James K, Bogue C, O'Connor OJ, Maher MM*
- 212 Computed tomography-guided catheter drainage with urokinase and ozone in management of empyema  
*Li B, Liu C, Li Y, Yang HF, Du Y, Zhang C, Zheng HJ, Xu XX*

**ABOUT COVER**

Editorial Board Member of *World Journal of Radiology*, Cher Heng Tan, MD, Assistant Professor, Department of Diagnostic Radiology, Tan Tock Seng Hospital, Singapore 308433, Singapore

**AIM AND SCOPE**

*World Journal of Radiology (World J Radiol, WJR, online ISSN 1949-8470, DOI: 10.4329)* is a peer-reviewed open access academic journal that aims to guide clinical practice and improve diagnostic and therapeutic skills of clinicians.

*WJR* covers topics concerning diagnostic radiology, radiation oncology, radiologic physics, neuroradiology, nuclear radiology, pediatric radiology, vascular/interventional radiology, medical imaging achieved by various modalities and related methods analysis. The current columns of *WJR* include editorial, frontier, diagnostic advances, therapeutics advances, field of vision, mini-reviews, review, topic highlight, medical ethics, original articles, case report, clinical case conference (clinicopathological conference), and autobiography.

We encourage authors to submit their manuscripts to *WJR*. We will give priority to manuscripts that are supported by major national and international foundations and those that are of great basic and clinical significance.

**INDEXING/ABSTRACTING**

*World Journal of Radiology* is now indexed in PubMed, PubMed Central, and Emerging Sources Citation Index(Web of Science).

**FLYLEAF**

**I-III** Editorial Board

**EDITORS FOR THIS ISSUE**

**Responsible Assistant Editor:** *Xiang Li*  
**Responsible Electronic Editor:** *Huan-Liang Wu*  
**Proofing Editor-in-Chief:** *Lian-Sheng Ma*

**Responsible Science Editor:** *Fang-Fang Ji*  
**Proofing Editorial Office Director:** *Xiu-Xia Song*

**NAME OF JOURNAL**  
*World Journal of Radiology*

**ISSN**  
 ISSN 1949-8470 (online)

**LAUNCH DATE**  
 January 31, 2009

**FREQUENCY**  
 Monthly

**EDITORS-IN-CHIEF**  
**Kai U Juergens, MD, Associate Professor**, MRT und PET/CT, Nuklearmedizin Bremen Mitte, ZEMODI - Zentrum für morphologische und molekulare Diagnostik, Bremen 28177, Germany

**Edwin JR van Beek, MD, PhD, Professor**, Clinical Research Imaging Centre and Department of Medical Radiology, University of Edinburgh, Edinburgh EH16 4TJ, United Kingdom

**Thomas J Vogl, MD, Professor, Reader in Health Technology Assessment**, Department of Diagnostic and Interventional Radiology, Johann Wolfgang Goethe University of Frankfurt, Frankfurt 60590,

Germany

**EDITORIAL BOARD MEMBERS**  
 All editorial board members resources online at <http://www.wjnet.com/1949-8470/editorialboard.htm>

**EDITORIAL OFFICE**  
 Xiu-Xia Song, Director  
*World Journal of Radiology*  
 Baishideng Publishing Group Inc  
 7901 Stoneridge Drive, Suite 501, Pleasanton, CA 94588, USA  
 Telephone: +1-925-2238242  
 Fax: +1-925-2238243  
 E-mail: [editorialoffice@wjnet.com](mailto:editorialoffice@wjnet.com)  
 Help Desk: <http://www.f6publishing.com/helpdesk>  
<http://www.wjnet.com>

**PUBLISHER**  
 Baishideng Publishing Group Inc  
 7901 Stoneridge Drive, Suite 501, Pleasanton, CA 94588, USA  
 Telephone: +1-925-2238242  
 Fax: +1-925-2238243  
 E-mail: [bpgoffice@wjnet.com](mailto:bpgoffice@wjnet.com)  
 Help Desk: <http://www.f6publishing.com/helpdesk>  
<http://www.wjnet.com>

**PUBLICATION DATE**  
 April 28, 2017

**COPYRIGHT**  
 © 2017 Baishideng Publishing Group Inc. Articles published by this Open-Access journal are distributed under the terms of the Creative Commons Attribution Non-commercial License, which permits use, distribution, and reproduction in any medium, provided the original work is properly cited, the use is non commercial and is otherwise in compliance with the license.

**SPECIAL STATEMENT**  
 All articles published in journals owned by the Baishideng Publishing Group (BPG) represent the views and opinions of their authors, and not the views, opinions or policies of the BPG, except where otherwise explicitly indicated.

**INSTRUCTIONS TO AUTHORS**  
<http://www.wjnet.com/bpg/gerinfo/204>

**ONLINE SUBMISSION**  
<http://www.f6publishing.com>

## Basic Study

## Segmentations of the cartilaginous skeletons of chondrichthyan fishes by the use of state-of-the-art computed tomography

Andrew D McQuiston, Callie Crawford, U Joseph Schoepf, Akos Varga-Szemes, Christian Canstein, Matthias Renker, Carlo N De Cecco, Stefan Baumann, Gavin J P Naylor

Andrew D McQuiston, U Joseph Schoepf, Akos Varga-Szemes, Matthias Renker, Carlo N De Cecco, Stefan Baumann, Division of Cardiovascular Imaging, Department of Radiology and Radiological Sciences, Medical University of South Carolina, Charleston, SC 29425, United States

Callie Crawford, Christian Canstein, Gavin J P Naylor, Hollings Marine Laboratory, College of Charleston, Charleston, SC 29425, United States

Matthias Renker, Department of Internal Medicine I, Cardiology/Angiology, Giessen University, 430011 Giessen, Germany

Carlo N De Cecco, Department of Radiological Sciences, Oncology and Pathology, University of Rome "Sapienza"-Polo Pontino, 04100 Latina, Italy

Stefan Baumann, First Department of Medicine, Faculty of Medicine Mannheim, University Medical Centre Mannheim, University of Heidelberg, 68305 Mannheim, Germany

**Author contributions:** All the authors contributed to the manuscript.

**Institutional animal care and use committee statement:** This study used preserved museum specimens and was exempt from IACUC approval.

**Institutional review board statement:** Not applicable.

**Conflict-of-interest statement:** U Joseph Schoepf, MD is a consultant for and/or receives research support from Astellas, Bayer, Bracco GE Healthcare, Guerbet, Medrad, and Siemens Healthineers. Drs. Akos Varga-Szemes and Carlo N. De Cecco were consultants for and/or received research support from Guerbet and Siemens. Christian Canstein, MSc is an employee of Siemens. The other authors declare that they have no conflicts-of-interest.

**Data sharing statement:** No additional data are available.

**Open-Access:** This article is an open-access article which was

selected by an in-house editor and fully peer-reviewed by external reviewers. It is distributed in accordance with the Creative Commons Attribution Non Commercial (CC BY-NC 4.0) license, which permits others to distribute, remix, adapt, build upon this work non-commercially, and license their derivative works on different terms, provided the original work is properly cited and the use is non-commercial. See: <http://creativecommons.org/licenses/by-nc/4.0/>

**Manuscript source:** Unsolicited manuscript

**Correspondence to:** U Joseph Schoepf, MD, Professor of Radiology, Medicine and Pediatrics, Director, Division of Cardiovascular Imaging, Department of Radiology and Radiological Sciences, Medical University of South Carolina, Ashley River Tower, 25 Courtenay Drive, Charleston, SC 29425, United States. [schoepf@musc.edu](mailto:schoepf@musc.edu)  
Telephone: +1-843-7922633  
Fax: +1-843-7920409

**Received:** August 7, 2016

**Peer-review started:** August 8, 2016

**First decision:** September 28, 2016

**Revised:** October 25, 2016

**Accepted:** December 13, 2016

**Article in press:** December 14, 2016

**Published online:** April 28, 2017

### Abstract

#### AIM

To apply dual-source multidetector computed tomography (DSCT) scanning technology in conjunction with computationally assisted segmentation in order to explore and document skeletal variation that has occurred over the course of evolution.

#### METHODS

We examined 4 divergent species of elasmobranchs

with high-resolution 3<sup>rd</sup> generation DSCT. The formalin prepared species examined were: *Aptychotrema vincentiana*, *Mitsukurina owstoni*, *Negaprion brevirostris* and *Dactylobatus armatus*.

## RESULTS

All three structures of the hyoid arch (hyomandibular, ceratohyal, and basihyal) were clearly visible whereas in the two batoids, the hyomandibular was the prominent feature, the ceratohyal was not visible and the basihyal was more reduced and closer to the gill arches. The general shape of the puboischiadic bar, or pelvic girdle, illustrated a closer relationship between the two sharks and the two batoids than between the two groups.

## CONCLUSION

In exquisite detail, DSCT imaging revealed important morphological variations in various common structures in the four elasmobranch specimens studied, providing insights into their evolutionary diversification.

**Key words:** Computed tomography imaging; Comparative biology; Sharks; Rays

© **The Author(s) 2017.** Published by Baishideng Publishing Group Inc. All rights reserved.

**Core tip:** Computed tomography is a helpful noninvasive imaging tool for comparative biology. The skeletal variations observed through our data will increase our understanding of how the anatomy of these organisms has changed over the course of evolution. The data collected allows for a more comprehensive understanding regarding the evolutionary history of the group.

McQuiston AD, Crawford C, Schoepf UJ, Varga-Szemes A, Canstein C, Renker M, De Cecco CN, Baumann S, Naylor GJP. Segmentations of the cartilaginous skeletons of chondrichthyan fishes by the use of state-of-the-art computed tomography. *World J Radiol* 2017; 9(4): 191-198 Available from: URL: <http://www.wjgnet.com/1949-8470/full/v9/i4/191.htm> DOI: <http://dx.doi.org/10.4329/wjr.v9.i4.191>

## INTRODUCTION

About 450 million years ago, the evolutionary lineage that lead to sharks, skates, and rays split from the main trunk of the vertebrate tree<sup>[1]</sup>. One lineage gave rise to bony fishes, tetrapods, amniotes and mammals - including humans - while the other gave rise to modern sharks and rays. The two lineages have been experimenting with different ways of solving environmental challenges for nearly half a billion years. Because they are evolutionarily independent, it is likely that each lineage has developed different solutions to similar challenges and that each harbors architectural attributes and innovations that are lineage specific.

Considerable effort has been put into studying the adaptations that have made the lineage leading to humans so successful, but almost nothing is known about the corresponding innovations and adaptations that have made sharks and rays so successful<sup>[2,3]</sup>.

Comparative biology provides an efficient way to reconstruct evolutionary history and to better understand how lineages have overcome environmental challenges. The approach involves exploring the diversity of traits in a suite of related organisms and then organizing the information into an evolutionary hierarchy that reveals how traits have changed over the course of time<sup>[4,5]</sup>. Traits can be molecular, cellular, physiological or anatomical.

Computed tomography (CT) is an important 3-dimensional (3D) imaging tool for medical and non-medical purposes. Beyond clinical radiology, this modality has previously been described in literature for use in a variety of different fields, including but not limited to aviation security, forensic minimally invasive autopsy, archaeology, and visualization of sarcophagi and mummies<sup>[6-8]</sup>. Due to its high spatial resolution and non-destructive nature, CT enables the display of distinct skeletal characteristics of different representatives of shark and ray lineages. Furthermore, the high spatial resolution of modern CT technology renders increased material differentiation possible, which may facilitate the assessment of minute disparities within the cartilaginous structures of sharks, skates and rays.

The work presented is a subset of the Chondrichthyan Tree of Life (CToL) project, a multi-institutional endeavor to create a database of evolutionary information for Chondrichthyan fishes (sharks, skates, rays and chimeras). Chondrichthyes are subdivided into two subclasses: Elasmobranchii (sharks, rays and skates) and Holocephali (chimeras). The goal of the CToL is to reconstruct the evolutionary lineages of all extant sharks, skates, rays and chimeras to better understand how these organisms have addressed environmental challenges by collecting both anatomical and genetic information. Thus, we sought to contribute to this body of knowledge through the application of DSCT and computer assisted segmentation to document variations in preserved specimens of sharks and rays.

## MATERIALS AND METHODS

### Study specimens

DSCT scans of 4 highly divergent elasmobranchs: *Aptychotrema vincentiana* (CSIRO MUW101), *Mitsukurina owstoni* (HUMZ 204610), *Negaprion brevirostris* (GMBL uncatalogued) and *Dactylobatus armatus* (UF 41302), were collected. The geographical distribution associated with each species can be seen in Figure 1. The specimens were preserved with formalin and kept in 70% Ethanol or 50% Isopropanol, sealed and stored in a dark environment and shipped from museums around the world to our institution. Specimens were loaned

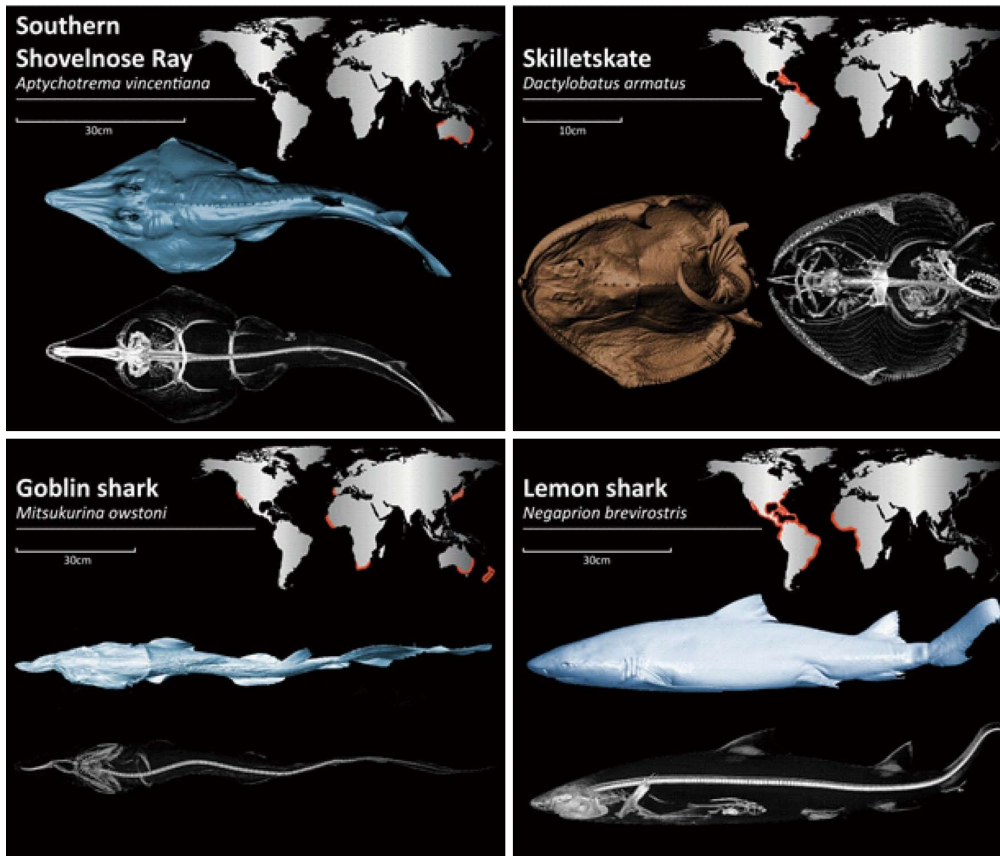


Figure 1 Three-dimensional reconstructions and global distribution, represented by orange highlights, of the four representative species in our study.

from Commonwealth Scientific and Industrial Research Organisation (CSIRO; Clayton South, Australia), Hokkaido University (HUMZ; Sapporo, Hokkaido, Japan), Grice Marine Biological Laboratory (GMBL; Charleston, South Carolina, United States), and the University of Florida (UF; Gainesville, Florida, United States). Table 1 provides an overview of the four species. As this study used preserved museum specimens, it was exempt from IACUC approval.

**Southern Shovelnose ray (*Aptychotrema vincentiana*)**

Endemic to Australia, the Southern Shovelnose ray resides primarily in shallow waters on sandy substrates where they feed on crustaceans, molluscs, worms, and other invertebrates<sup>[9]</sup>. It is easily distinguished by its long triangular snout. They are usually sandy-colored with scattered dark spots, assisting with camouflage on the ocean floor. Reproduction is ovoviviparous, with litters reaching 14-16 in number<sup>[10]</sup>.

**Goblin shark (*Mitsukurina owstoni*)**

Typically found at depths of up to 1300 m, goblin sharks have a nearly global distribution<sup>[10]</sup>. This shark is distinguished by its disproportionately long, thin snout overhanging rows of sharp, non-serrated fang-like teeth. The highly protrusive jaws extend anteriorly, enabling the Goblin shark to capture cephalopods, crustaceans and bony fish<sup>[10]</sup>. Goblin sharks have a

relatively small optic tectum, indicating that vision is less important to this species; instead they rely heavily on their electro-sensitive snout. Nevertheless, unlike most deep-sea sharks, they have fully functional irises suggesting that they do use vision to some extent. Although a pregnant female is yet to be captured, these sharks are thought to be ovoviviparous. Little is known about their social behavior<sup>[10]</sup>.

**Lemon sharks (*Negaprion brevirostris*)**

Lemon sharks inhabit coral reefs, enclosed sounds, bays, river mouths, and mangrove fringes of coastal inshore waters of the Western Atlantic and Eastern Pacific oceans. They are large, stocky, and blunt nosed with a pair of similar sized dorsal fins; the first just posterior to the pectoral fins and the second just anterior to the origin of the anal fin. They are commonly found in warm, shallow water at depths usually not exceeding 100 m. This species feeds mostly on bony fish<sup>[10]</sup>, however, intra-specific predation of juvenile lemon sharks by adults has been observed<sup>[11]</sup>. Group living and social behavior is frequently observed among juveniles and thought to be important to survival, possibly reducing the risk from predation. Some believe lemon sharks exhibit social learning and cooperation, based on a relative brain mass overlapping that of mammals and birds<sup>[12]</sup>. Lemon sharks gather for reproduction in special nursery areas located in shallow water. A 10-12 mo gestation period

**Table 1 Overview of the study specimens**

	<b>Southern Shovelnose ray</b>	<b>Skilletskate</b>	<b>Goblin shark</b>	<b>Lemon shark</b>
Scientific name	<i>Aptychotrema vincentiana</i>	<i>Dactylobatus armatus</i>	<i>Mitsukurina owstoni</i>	<i>Negaprion brevirostris</i>
Kingdom	Animalia	Animalia	Animalia	Animalia
Phylum	Chordata	Chordata	Chordata	Chordata
Class	Chondrichthyes	Chondrichthyes	Chondrichthyes subclass:	Chondrichthyes subclass:
			Elasmobranchii	Elasmobranchii
Order	Rajiformes	Rajiformes	Lamniformes	Carcharhiniformes
Family	Rhinobatidae	Rajidae	Mitsukurinidae	Carcharhinidae
Genus	Aptychotrema	Dactylobatus	Mitsukurina	Negaprion
Species authority	Haacke, 1885	Bean and Weed, 1909	Jordan, 1898	Poey, 1868
Distribution	Eastern Indian Ocean: endemic to Australia (20°S - 40°S)	Western Central Atlantic: South Carolina, United States to the Gulf of Mexico and along Central America to Venezuela Also found on middle continental slope off southern Brazil (35°N - 35°S, 30°W - 98° W)	Western Atlantic: Guyana, Suriname and French Guiana Eastern Atlantic: France (Bay of Biscay), Madeira, Portugal, and South Africa Western Indian Ocean: off South Africa. Western Pacific: Japan, Australia (South Australia, New South Wales), New Zealand Eastern Pacific: United States (southern California) (8°N - 55°S, 180°W - 180°E)	Western Atlantic: New Jersey, United States to southern Brazil, including the Gulf of Mexico, the Bahamas, and the Caribbean; also in Gulf of Mexico Northeast Atlantic: Senegal, Côte d'Ivoire and probably wide-ranging off West Africa, but this requires confirmation. Eastern Pacific: southern Baja California, Mexico and the Gulf of California to Ecuador (45°N - 39°S, 114°W - 0°)
Environment	Marine; demersal;	Marine; bathydemersal;	Marine; bathydemersal;	Marine; brackish; reef-associated; oceano-dromous
	Depth range: 0-32 m	Depth range: 300-900 m (usually 300-700 m)	Depth range: 30-1300 m (usually 270-960 m)	Depth range: 0-92 m
Size (cm)	Maximum length: 79.0 cm Presented specimen: 72.9 cm	Maximum length: 32.0 cm Presented specimen: 23.5 cm	Maximum length: 617.0 cm Presented specimen: 119.5 cm	Maximum length: 340.0 cm Presented specimen: 95.6 cm
Red list category	Least concern	Data deficient	Least concern	Near Threatened
Threat to humans	Harmless	Harmless	Harmless	Minor Threat

follows spring and early summer mating, which yields average litters of 4-17 offspring<sup>[13]</sup>.

**Skilletskate (*Dactylobatus armatus*)**

The skilletskate is a deepwater species first discovered in 1905 (Figure 2). It can be found sporadically throughout the western Atlantic on the muddy bottoms of the continental slope, and is occasionally caught by commercial deepwater fisheries. Similar to others in the order Rajiformes, skates are presumed to be oviparous, but little is known about the biology of the skilletskate. The species is presently considered data deficient<sup>[14]</sup>.

**DSCT protocol and technique**

All examinations were performed with a high-resolution 3<sup>rd</sup> generation dual-source multidetector computed tomography (DSCT) scanner (Somatom Force, Siemens, Forchheim, Germany). 3D CT scans of the skeletal anatomy for each species were performed using a high resolution imaging protocol that was optimized for each individual specimen by maximizing the tube current. Acquisitions were performed in dual-energy mode at tube voltages of 80 and 150 kV with the specimen placed along the isocenter Z-axis of the CT gantry (Figure 2). The imaging data were processed with 0.5 mm

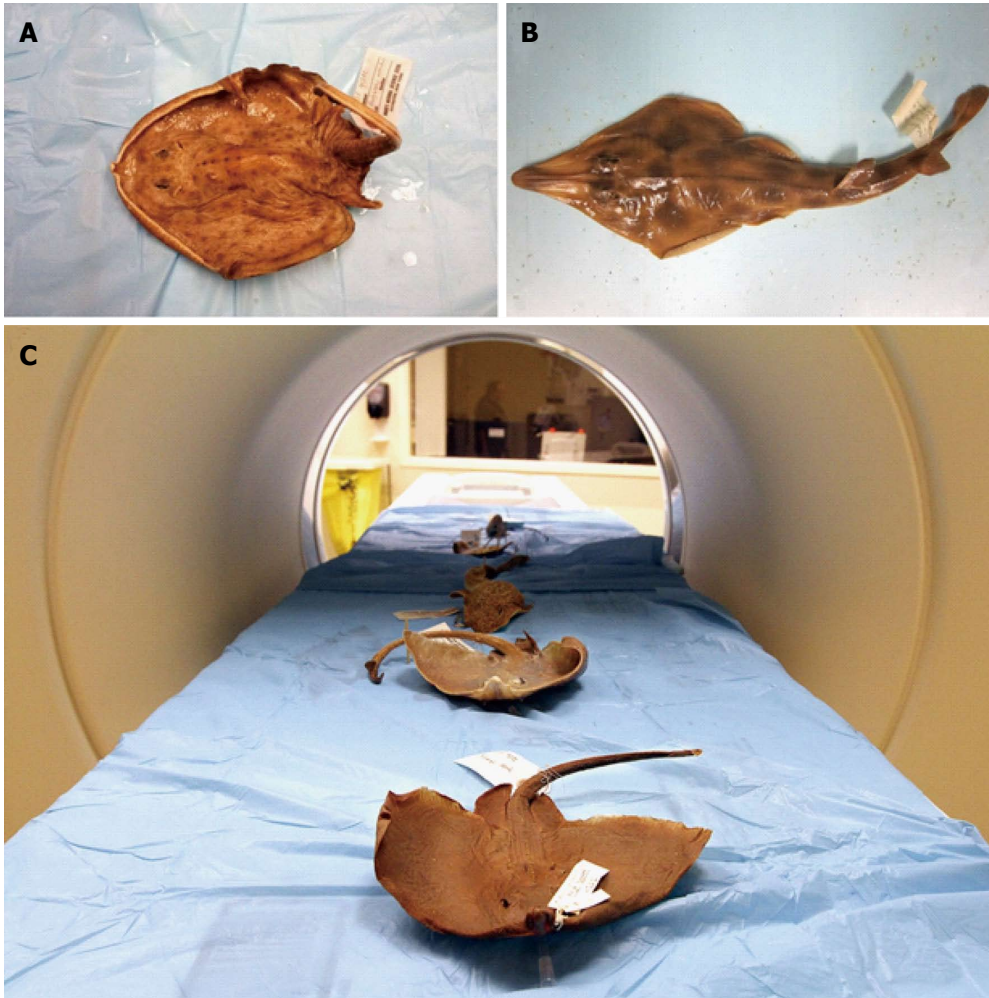
section thickness, allowing for reconstruction of the 3D skeletal structure and surface anatomy using advanced modelled iterative reconstruction. The cranium was virtually re-sliced in the sagittal, coronal, and frontal planes and movies of rotations of each specimen were generated. Further CT imaging parameters are listed in Table 2.

**Three-dimensional reconstruction**

Segmentation and three-dimensional rendering of the cartilaginous skeletons were manually completed with various tools in MIMICS Research version 17.0 64-bit software (Materialise, Leuven, Belgium). Specific cartilaginous elements were color coded to facilitate comparison across species (Figure 3). The 3D images were handled electronically on a workstation, displaying areas of interest in multiple dimensions. The data from the scans will be added to an anatomical database as part of the CToL project which will allow for a more rigorous interpretation of the fossil record.

**RESULTS**

We were able to acquire high quality images and generate 3D reconstructions without the presence of artifacts



**Figure 2** Formalin-preserved specimens positioned in the computed tomography scanner. A: Skilletskate (*Dactylobatus armatus*); B: Southern Shovelnose ray (*Aptychotrema vincentiana*); C: The processes of the scan.

Table 2 Computed tomography protocol		
Acquisition parameters	Thorax Hd	DE Thorax
Section collimation	192 mm × 0.6 mm	192 mm × 0.6 mm
Slice thickness (mm)	0.5	0.5
Increment (mm)	0.3	0.5
Rotation time (s)	0.5	0.3
Pitch	0.35	0.65
Tube voltage (kV)	120	80 + 150
Effective tube current–time product (mAs)	37-104	1107/615
DLP (mGy/cm)	2.3-6.23	17.55-27.76
Reconstruction kernel	Bf32/Br54 Admire 3	Qr32/Qt54 Admire 3

in all specimens. Anatomical structures present in all specimens are color coded and shown in Figure 3. Each colored structure corresponds to the structure of the same color in the other panels, illustrating how it has changed in each of the four species over the course of evolutionary history. The following examples demonstrate such structures, which share a common

origin but have somewhat diverged in terms of overall structure and function.

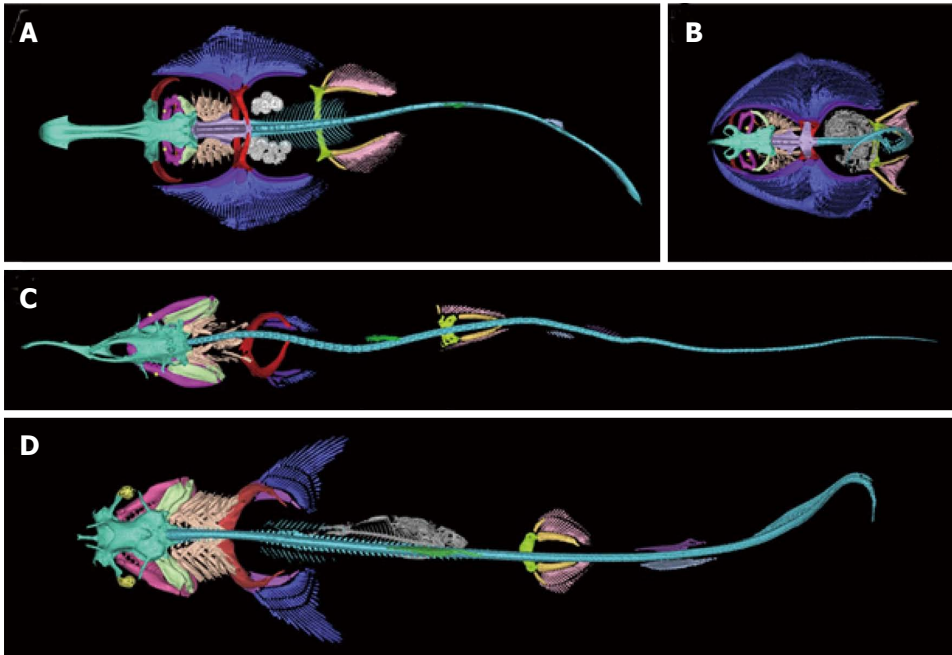
**Hyoid arch**

Figure 4 shows the structures of the hyoid arch in pale green for each of the specimens in the current study. In the two shark species, all three structures of the hyoid arch (hyomandibular, ceratohyal, and basihyal) were clearly visible whereas in the two batoids, the hyomandibular was a prominent feature while the ceratohyal was not visible and the basihyal was much more reduced and closer to the gill arches.

**Puboischiadic bar**

The pink structure shown in all panels of Figure 3 represents the pelvic fins for each specimen. The general shape of the puboischiadic bar, or pelvic girdle, illustrated a closer relationship between the two sharks and the two batoids than between the two groups. With greater coverage of the families and genera of these two groups of elasmobranchs, the characteristics of the structures can be used to discern relationships in the phylogeny.





**Figure 3** Dorsal view of three-dimensional reconstructions of the skeleton. A: Shovelnose ray (*Aptychotrema vincentiana*); B: Skilletskate (*Dactylobatus armatus*); C: Lemon shark (*Negaprion brevirostris*); D: Goblin Shark (*Mitsukurina owstoni*). Skeletal element color coding: turquoise, chondrocranium; maroon, antorbitals; magenta, jaws (palatoquadrate, meckel's cartilage, and labial cartilage); orange, spiracular cartilage; yellow, eye cup and lens; pale green, hyoid arch (hyomandibular, ceratohyal, and basihyal); peach, gill arches (pharyngobranchials, epibranchials, ceratobranchials, hypobranchials, basibranchial, and branchial rays); violet, synarcual; cyan, vertebral column; red, scapulocoracoid; purple, pectoral basal cartilages; blue, pectoral radials; gray, ingested fish (flounder and teleost vertebral column); white, eggs; green, anterior dorsal fin; skyblue, posterior dorsal fin; deep purple, anal fin; greenyellow, puboischiadic bar; gold, pelvic basal cartilages; pink, pelvic radials.

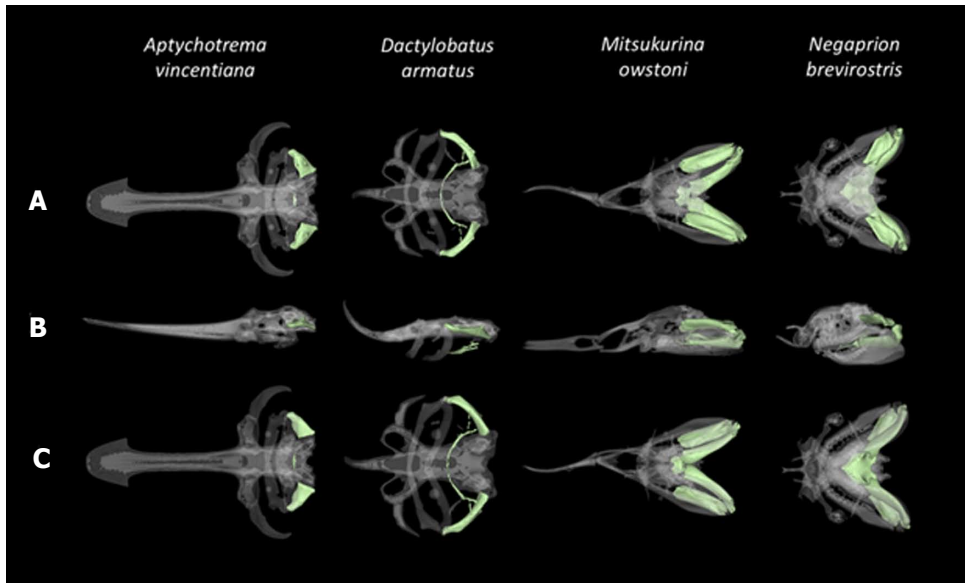
## DISCUSSION

About 530 million years ago, the Cambrian explosion gave rise to the first vertebrates. About 80 million years later, the Chondrichthyan lineage of all modern sharks, skates, rays and chimaeras departed from the main vertebrate lineage. This lineage gave rise to all modern elasmobranchs (Kyne, 2007 #174)<sup>[15]</sup>. The other lineage gave rise to the bony fishes, which in turn gave rise to the well-studied tetrapod, amniotes and mammal diversifications. Both lineages developed jaws prior to diverging, one of the defining features of early vertebrates. However, while most members of the bony fish lineage went on to acquire features more commonly associated with extant vertebrates (*e.g.*, lungs, bone), the elasmobranchs maintained gills and developed a cartilaginous skeleton. Of course, these characteristics should not be thought of as subordinate-rather, they allowed for their extraordinarily lengthy survival over the course of evolutionary history, making these features especially intriguing. It would also be incorrect to think that sharks, skates, and rays have not evolved since they diverged from the main vertebrate trunk. Their main design has remained relatively fixed in comparison with the bony fish lineage, which has diversified incredibly into all extant amphibians, reptiles, birds and mammals. The fact that sharks, skates, and rays are extant today means that they and their ancestors survived at least five global mass extinctions over the last half billion years, one of which (Permian-Triassic

extinction) killed 96% of all marine species<sup>[16]</sup>, and are among the oldest groups of surviving vertebrates. To put this into context, ancestors specific to the elasmobranch lineage date back more than 200 million years before the appearance of the first dinosaur. Around 65 million years ago at the end of the Cretaceous period, the most recent mass extinction event occurred, wiping out 75% of extant species during that time, along with all dinosaurs<sup>[17]</sup>. Some species of elasmobranchs of course survived, giving rise to all modern sharks, skates, and rays.

The superorder Batoidea, including all modern skates and rays, represent a flattened variation of the common ancestor they share with modern sharks, which was likely much more shark-like. Ancient batoid remains as old as 150 million years have been recovered, but they are thought to have first appeared in the late Triassic. By flattening their bodies, batoids adopted an anatomy better suited for occupying the ocean floor. They share many of the same feeding niches with sharks, pursuing krill, crush shelled molluscs, and fish (including sharks). However, the flattened batoid face and resulting ventrally located mouth make the ram feeding mode employed by sharks impossible<sup>[18]</sup>.

Although elasmobranch fossils exist, the fossil record is less complete compared to other vertebrates whose skeletons are better calcified. Teeth, having mineralogical stability, have a significantly increased chance of undergoing fossilization and have provided the majority of the information to biologists studying elasmobranch



**Figure 4** Close-up dorsal, lateral, and ventral views of the cranial skeleton of four elasmobranchs. A: Shovelnose ray (*Aptychotrema vincentiana*); B: The Skilletskate (*Dactylobatus armatus*); C: The Goblin Shark (*Mitsukurina owstoni*) and the Lemon shark (*Negaprion brevirostris*), reconstructed in 3D with the hyoid arch highlighted in pale green.

evolution through fossils. However, elasmobranch teeth cannot paint the whole picture, making other methods for studying their evolution important. Genetic evidence represents the primary alternative to fully articulated fossils. CT imaging constitutes another important method for studying the phylogeny of different species, providing the opportunity to obtain scan data for segmentations of the cartilaginous skeleton of Chondrichthyan. Obtaining CT data and the subsequent segmentation was used to determine the shape, angle, and size of various structures in a noninvasive manner, avoiding the destructive dissections that are generally required to measure these structures. Dissection was not possible for most of the specimens examined due to their frailty and rarity.

Morphology of the hyoid arch, a central component of the jaw protrusion apparatus, has diverged considerably among extant elasmobranchs and those observed in the fossil record<sup>[19]</sup>. Jaw protrusion is believed to have conferred a distinct advantage for prey capture, and has been well studied<sup>[20]</sup>. Shape and angle of the hyoid arch may be used to determine whether an elasmobranch is likely to use suction or ram feeding strategies<sup>[21]</sup>, and is often used to infer ancestral feeding mechanisms when vestigial elements remain. We were able to identify the hyoid arch and the shape and angle of its components in each of the four species studied.

The pelvic fins, including the puboischiadic bar, pelvic radials, pelvic propterygium, and pelvic metapterygium have also diverged within the elasmobranchs. In males, this structure also includes the claspers which are often used in species identification. In batoids, the pelvic fins can be used for punting, and sometimes walking as observed in the leg-skates whereas in sharks, the pelvic fins are used more for stabilization, although some sharks have been observed using pelvic fins for walking

and punting (Macesic and Kaijura).

Although we did not explore the Micro-CT (MCT) modality in this study due to the fact that the species were too large for the limited field-of-view of MCT; MCT imaging would likely provide significantly more detailed resolution of elasmobranch anatomical structures. The MCT unit at our institution (Siemens Inveon Micro-CT/PET, Siemens Medical Solutions, Knoxville, TN) allows for 30-80 kVp tube potential with a 9 cm × 6 cm maximum field of view. The dual-modality system can produce images with a resolution as low as 15 μm. While size restrictions would severely limit which specimens could be imaged, smaller elasmobranchs such as the cigar shark (*Isistius brasiliensis*), measuring less than 4 cm in diameter, would fit into the machine's bore. Furthermore, elasmobranch embryos and some newborn pups would make good candidates for MCT imaging. In some cases, however, embryos and very young individuals are not well calcified, resulting in low-quality images of skeletal structures.

CT-based comparative anatomy of modern elasmobranchs will be used to document anatomical variation among the major elasmobranch lineages for an ongoing CTOL project. The skeletal variations observed are expected to increase our understanding of how the anatomy in these organisms has changed over the course of evolution. Completed segmentations will be entered into an online database which will also contain information for the other components of the CTOL project.

## COMMENTS

### Background

The work presented is a subset of the chondrichthyan tree of life (CToL) project, a multi-institutional endeavor to create a database of evolutionary information for

Chondrichthyan fishes (sharks, skates, rays and chimeras). Chondrichthyes are subdivided into two subclasses: Elasmobranchii (sharks, rays and skates) and Holocephali (chimeras). The goal of the CTOL is to reconstruct the evolutionary lineages of all extant sharks, skates, rays, and chimeras to better understand how these organisms have addressed environmental challenges by collecting both anatomical and genetic information.

### Research frontiers

Computed tomography (CT) is an important 3-dimensional (3D) imaging tool for medical as well as non-medical purposes. Due to its high spatial resolution and non-destructive nature, CT enables the display of distinct skeletal characteristics of different representatives of shark and ray lineages. Furthermore, the high spatial resolution of modern CT technology renders increased material differentiation possible, which may facilitate the assessment of minute disparities within the cartilaginous structures of sharks, skates, and rays.

### Innovations and breakthroughs

The skeletal variations observed are expected to increase the understanding of how the anatomy in these organisms has changed over the course of evolution.

### Applications

CT-based comparative anatomy of modern elasmobranchs will be used to document anatomical variation among the major elasmobranch lineages for an ongoing CTOL project. Completed segmentations will be entered into an online database which will also contain information for the other components of the CTOL project.

### Terminology

Chondrichthyan Tree of Life (CToL) project: A multi-institutional endeavor to create a database of evolutionary information for Chondrichthyan fishes. Chondrichthyan fishes: Sharks, skates, rays and chimeras. Chondrichthyes are subdivided into two subclasses: Elasmobranchii (sharks, rays and skates) and Holocephali (chimeras).

### Peer-review

This is an interesting study on the documentation of skeletal variation in 4 divergent species of elasmobranchs with high-resolution 3<sup>rd</sup> generation DSCT.

## REFERENCES

- 1 **Maisey J**, Chesek C, Miller D. Discovering fossil fishes. New York, NY: Henry Holt and Company, 1996: 223
- 2 **Myers RA**, Baum JK, Shepherd TD, Powers SP, Peterson CH. Cascading effects of the loss of apex predatory sharks from a coastal ocean. *Science* 2007; **315**: 1846-1850 [PMID: 17395829 DOI: 10.1126/science.1138657]
- 3 **Carrier JC**, Musick JA, Heithaus MR. Biology of sharks and their relatives. 2nd ed. Boca Raton: CRC Press/Taylor & Francis Group, 2012: 3-4 [DOI: 10.1201/b11867]
- 4 **Compagno L**. Sharks of the order Carcharhiniformes. Princeton, NJ: Princeton University Press, 1988: 12-71, 341-345

- 5 **Shirai S**. Squalan phylogeny: a new framework of “squaloid” sharks and related taxa. Sapporo: Hokkaido University Press, 1992: 151
- 6 **Huppertz A**, Wildung D, Kemp BJ, Nentwig T, Asbach P, Rasche FM, Hamm B. Nondestructive insights into composition of the sculpture of Egyptian Queen Nefertiti with CT. *Radiology* 2009; **251**: 233-240 [PMID: 19332855 DOI: 10.1148/radiol.2511081175]
- 7 **Jansen RJ**, Poulus M, Kottman J, de Groot T, Huisman DJ, Stoker J. CT: a new nondestructive method for visualizing and characterizing ancient Roman glass fragments in situ in blocks of soil. *Radiographics* 2006; **26**: 1837-1844 [PMID: 17102054 DOI: 10.1148/rg.266065079]
- 8 **Weustink AC**, Hunink MG, van Dijke CF, Renken NS, Krestin GP, Oosterhuis JW. Minimally invasive autopsy: an alternative to conventional autopsy? *Radiology* 2009; **250**: 897-904 [PMID: 19244053 DOI: 10.1148/radiol.2503080421]
- 9 **Last P**, Stevens JD. Sharks and Rays of Australia. Melbourne, Australia: CSIRO, 1994
- 10 **Castro J**. The Sharks of North America. Oxford: Oxford University Press, 2011: 201-205, 481-485
- 11 **Guttridge T**, Gruber SH, Franks BR, Kessel ST, Gledhill KS, Uphill J, Krause J, Sims DW. Deep danger: intra-specific predation risk influences habitat use and aggregation formation of juvenile lemon shark *Negaprion brevirostris*. *Marine Ecology Progress Series* 2012; **445**: 279-291 [DOI: 10.3354/meps09423]
- 12 **Guttridge TL**, van Dijk S, Stamhuis EJ, Krause J, Gruber SH, Brown C. Social learning in juvenile lemon sharks, *Negaprion brevirostris*. *Anim Cogn* 2013; **16**: 55-64 [PMID: 22933179 DOI: 10.1007/s10071-012-0550-6]
- 13 **Compagno L**. FAO Species Catalogue. In: Ichthyology JSIo, editor Sharks of the World. Rome, 1984
- 14 **McEachran J**, de Carvalho MR. Batoid Fishes. In: University OD, editor The Living Marine Resources of the Western Central Atlantic. Rome, 2002: 508-529
- 15 **Kyne P**, Simpfendorfer CA. A Collation and Summarization of Available Data on Deepwater Chondrichthyan: Biodiversity, Life History and Fisheries (Marine Conservation Biology Institute, 2007). Available from: URL: [http://www.iucnssg.org/uploads/5/4/1/2/54120303/kyne\\_simpfendorfer\\_2007.pdf](http://www.iucnssg.org/uploads/5/4/1/2/54120303/kyne_simpfendorfer_2007.pdf)
- 16 **Labandeira CC**, Sepkoski JJ. Insect diversity in the fossil record. *Science* 1993; **261**: 310-315 [PMID: 11536548 DOI: 10.1126/science.11536548]
- 17 **Raup DM**, Sepkoski JJ. Mass extinctions in the marine fossil record. *Science* 1982; **215**: 1501-1503 [PMID: 17788674 DOI: 10.1126/science.215.4539.1501]
- 18 **Dean MN**, Bizzarro JJ, Summers AP. The evolution of cranial design, diet, and feeding mechanisms in batoid fishes. *Integr Comp Biol* 2007; **47**: 70-81 [PMID: 21672821 DOI: 10.1093/icb/pcm034]
- 19 **Wilga C**. Evolutionary divergence in the feeding mechanism of fishes. *Acta Geologica Polonica* 2008; **58**: 113-120
- 20 **Wilga C**, Hueter RE, Wainwright PC, Motta PJ. Evolution of the upper jaw protrusion mechanisms in elasmobranchs. *American Zoologist* 2002; **41**: 1248-1257
- 21 **Tomita T**, Sato K, Suda K, Kawauchi J, Nakaya K. Feeding of the megamouth shark (Pisces: Lamniformes: Megachasmidae) predicted by its hyoid arch: a biomechanical approach. *J Morphol* 2011; **272**: 513-524 [PMID: 21381075 DOI: 10.1002/jmor.10905]

**P- Reviewer:** Chen F, Irurita J, Verlinden O **S- Editor:** Qiu S  
**L- Editor:** A **E- Editor:** Wu HL





Published by **Baishideng Publishing Group Inc**  
7901 Stoneridge Drive, Suite 501, Pleasanton, CA 94588, USA  
Telephone: +1-925-223-8242  
Fax: +1-925-223-8243  
E-mail: [bpgoffice@wjgnet.com](mailto:bpgoffice@wjgnet.com)  
Help Desk: <http://www.f6publishing.com/helpdesk>  
<http://www.wjgnet.com>

