



## Seed rain after a fire in a xerophytic shrubland

### Lluvia de semillas después de un incendio en un matorral xerófilo

Yuriana Martínez-Orea<sup>1</sup>✉, Silvia Castillo-Argüero<sup>1</sup>, Mariana Hernández-Apolinar<sup>1</sup>, María Patricia Guadarrama-Chávez<sup>2</sup> y Alma Orozco-Segovia<sup>3</sup>

<sup>1</sup>Departamento de Ecología y Recursos Naturales, Facultad de Ciencias, Universidad Nacional Autónoma de México. Ciudad Universitaria, Circuito exterior s/n. 04510, México D. F., México.

<sup>2</sup>Unidad Multidisciplinaria SISAL-Mérida. Facultad de Ciencias, Universidad Nacional Autónoma de México. Unidad Rendón Peniche. Calle 43 s/n x 44 46, Col. Industrial, 97150 Mérida, Yucatán, México.

<sup>3</sup>Laboratorio de Fisiología Ecológica, Instituto de Ecología, Universidad Nacional Autónoma de México. Ciudad Universitaria, 70-275, 04510, México D. F., México.

✉ yurimar29@yahoo.com.mx

**Abstract.** Fire causes a reduction of plant cover due to the death of several structures, especially of those that are not isolated from high temperatures; such as seeds and fruits. After a disturbance the availability of diaspores is crucial for the recovery of the community. This work studied the composition and abundance of the seed rain in the xerophytic shrubland of the Pedregal de San Ángel Ecological Reserve, located at the Universidad Nacional Autónoma de México campus in Mexico City, which was affected by a surface fire. In order to understand the role of diaspores in the natural regeneration of a burned site, seed traps were placed on 2 sites, one affected by the fire and the other in an unburned location. During 1 year the dispersed seeds and fruits were collected and identified. Results showed that species richness, life forms, and dispersal syndromes were different between sites. The highest abundance and richness values were observed in the burned site. This work offers basic data on the availability of species as diaspores, information which is useful for potential restoration strategies especially in those areas under constant anthropogenic disturbances.

Key words: dispersal syndrome, richness, plant diversity, regeneration.

**Resumen.** El fuego causa la reducción de la cobertura vegetal debido a la muerte de diversas estructuras, especialmente de aquellas que no están aisladas de las altas temperaturas, tal es el caso de semillas y frutos. Dado que estas diásporas permiten la recuperación de la vegetación, resulta crucial entender su composición y abundancia sobre todo después de un disturbio. Este trabajo estudió la composición y abundancia de la lluvia de semillas en el matorral xerófilo Reserva ecológica del Pedregal de San Ángel, localizado en el campus de la Universidad Nacional Autónoma de México en la ciudad de México, el cual fue afectado por un incendio superficial. Con el fin de entender el papel de las diásporas en la regeneración natural se colocaron trampas de semillas en dos sitios, uno quemado y uno no quemado. Durante un año las diásporas fueron colectadas e identificadas. Los resultados mostraron que la riqueza de especies, las formas de vida y los síndromes de dispersión fueron diferentes entre sitios. Los mayores valores de abundancia y de riqueza de diásporas fueron observados en el sitio quemado. Este trabajo ofrece información básica acerca de la disponibilidad de las especies en forma de diásporas, misma que es estratégica en la restauración futura de áreas sujetas a constantes disturbios antropogénicos.

Palabras clave: síndrome de dispersión, riqueza, diversidad, regeneración.

#### Introduction

Plant establishment and growth in urban zones are generally affected by the elimination and transformation of natural ecosystems within the areas where humans have become settled (Lundholm and Marlin, 2006). For example, it is well known that temperate forests, aquatic vegetation, and xerophytic shrublands have been fragmented or eliminated in the Endorheic Basin of the

Valley of Mexico, as Mexico City has expanded (Ezcurra, 1992; Ezcurra et al., 2002). Particularly, disappearing xerophytic shrublands are ecosystems that were commonly found between altitudes of 2 200-2 500 m. This type of vegetation is unique in the world due to its great floristic diversity, being the largest of its type in this area (Rojo, 1994; Carrillo-Trueba, 1995; Challenger, 1998; Lot and Cano-Santana, 2009). Foremost, in the densest city of the world nowadays, this fragmented ecosystem works as an aquifer filter, captures carbon dioxide, provides refuge for many plant and animal species, and harbors endemic taxa (Lot and Cano-Santana, 2009).

Despite its natural value and ecosystem services, this shrubland has been affected by urban sprawl since the second half of the 20th century, causing a 70% reduction of its original area (Soberón et al., 1991; Carrillo-Trueba, 1995). In an attempt to mitigate a deeper transformation and avoid the loss of the whole ecosystem, a few protected areas have been established, including the Ecological Reserve of the Pedregal de San Ángel (REPSA). This area, designated in 1983, is located within the campus of the National Autonomous University of Mexico (UNAM; Rivero-Serrano, 1983). As this reserve is surrounded by buildings and wide avenues, it has been constantly affected by garbage deposition, incidence of feral fauna, plant poaching, and fires of different intensity and frequency, generally provoked by humans (Juárez-Orozco and Cano-Santana, 2007).

One of the most destructive disturbances was a fire that occurred in 1998. This severe fire was promoted by a prolonged drought and a deep layer of natural fuel load (Martínez-Mateos, 2001). The fire affected 30% of the reserve and left behind burned patches in several areas. This fire made the mosaic of conserved and perturbed fragments in the REPSA more conspicuous. Some studies on the immediate changes in the physical environment, on the vegetation structure, and on the seed bank dynamics were started in March 1998, immediately after the fire (e.g., Martínez-Mateos, 2001; Martínez-Orea et al., 2010). Accordingly, this study is focused on the sources of the propagule dynamics as the fire caused a drastic reduction in the herbaceous and shrub layers, and left many available open spaces to be colonized (Martínez-Mateos, 2001). In order to know the effect of fire on seed rain, which is one of the main factors that determines community maintenance and regeneration, we assess seed rain composition and richness in burned and unburned sites.

## Material and Methods

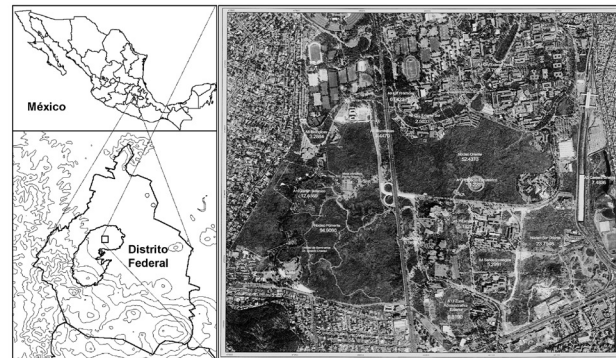
*Study site.* The Ecological Reserve “El Pedregal de San Ángel” hosts a xerophytic shrubland and is located in southwest Mexico City (19°18'31"-19°19'17" N, 99°10'20"-99°11'52" W) at an altitude of 2 300 m. It covers a total area of 237.3 ha (171 ha correspond to a nucleus area and 66 ha to a buffer area) (de la Fuente, 2005) (Fig. 1). The climate of the REPSA, including the university campus, in general is temperate sub humid, type Cb (w1)(w) (García, 1988), with a mean annual temperature of 15.5° C and a mean annual precipitation of 835 mm. There is a marked rainy season from June to October and a dry season from November to May.

Three hundred and seventy 7 species of vascular plants have been reported for this reserve (Castillo-

Argüero et al., 2009). Several authors have suggested that the high diversity found here is closely related to a peculiar environmental heterogeneity generated by a lava flow from the Xitle volcano some 2000 years ago and its posterior cooling off (Martín del Pozzo, 1995; Castillo-Argüero et al., 2004) (Fig. 1). Families such as Asteraceae, Poaceae, and Fabaceae have the greatest number of species in the community. Most are perennial, with herbaceous and shrubby species as dominant (Castillo-Argüero et al., 2004, 2007).

As mentioned above, this ecosystem provides services on aquifer recharge, as a carbon sink, in climate regulation, soil formation, nutrient recycling, and plant pollination. Also in conserving biodiversity and gene pools for future generations, since it is a refuge for several plant and animal species.

*Seed rain assessment.* To assess the nature of the seed rain in the REPSA, we selected 2 100x100 m sites, one affected by the fire in 1998, and another in an unburned area; both sites were contiguous and included all the micro-sites found in the reserve, e.g. longitudinal cracks, domes, flat lava blocks, etc. On each site, 32 conventional seed traps were set at ground level in places generated by using *x* and *y* random coordinates. Seed trap measures were 40x40 cm at the base and 24 cm in height; they consisted of wire and light cloth, which prevented diaspores from getting moldy. The combined area of all traps was 22.52 m<sup>2</sup>. Twice a month (from May 1999 to June 2000) we collected the material that fell into seed traps, and examined it under a dissecting microscope. Diaspores were separated, counted, and identified. One of 5 categories of life form (*sensu* Raunkiaer, 1934) and 1 of 10 dispersal syndromes (according to the diaspores morphological structures *sensu* Dansereau and Lems (1957)) were assigned to each diaspore species. These data and the abundance of diaspores per day and trap were incorporated in a database.



**Figure 1.** The Pedregal de San Ángel Ecological Reserve (REPSA) in Mexico City (Distrito Federal), Mexico. Orthophotomap modified from de la Fuente (2005).

**Data analysis.** We compared the differences in richness and abundance of species between sites and seasons with a Student's *t*-test (StatSoft Inc., 2001); data were previously transformed [ $\ln(x+1)$ ]. The Shannon-Wiener index was calculated to evaluate species diversity ( $H' = -\sum p_i \ln p_i$ ), where  $p_i$  is the proportion of individuals of the species  $i$  with respect to the total of individuals, calculated as follows:  $n_i/N$ , where  $n_i$  is the number of diaspores of the species  $i$  and  $N$  is the total number of diaspores (Magurran, 1988). A Student's *t*-test was carried out to determine whether there were differences between the diversity values of the burned and the unburned site (Zar, 1974). The Berger-Parker dominance index ( $d = N_{max}/N$ ) was calculated, where  $N_{max}$  is the number of diaspores of the most abundant species and  $N$  is the total number of diaspores of all species present in the seed rain. The Sørensen similarity index, which for A and B sites is given as  $[Cs = 2j/(a+b)]$ , in which  $a$  = number of species in site A,  $b$  = number of species in site B,  $j$  = number of species common to both sites, was also calculated (Magurran, 1988). Differences in abundance of diaspores, categorized by their life forms and dispersal syndromes, were analyzed with chi-square tests per site and season. For each test, adjusted Haberman residuals were calculated to reveal any discrepancies in abundance among categories (Zar, 1974).

**Results**

**Abundance and richness.** A total of 334 806 diaspores were captured in the 64 traps during 1 year. This represents a seed density of 1 671 diaspores  $m^{-2} year^{-1}$ . These diaspores were grouped in 97 identified species, which correspond to 40 families of Angiosperms (Appendix 1). The observed seed rain represents 30% of the registered species for the REPSA. Five species covered 87% of the captured seeds: *Buddleja cordata* (58%), *Muhlenbergia robusta* (16%), *Ageratina pichinchense* (7%), *Wigandia urens* (3.4%), and *Gamochaeta americana* (2.5%). We found 25 species exclusive of the burned site, and 14 of the unburned patch. Similarly, 33 and 11 species were common to both sites during the rainy and dry season, respectively (Appendix 1).

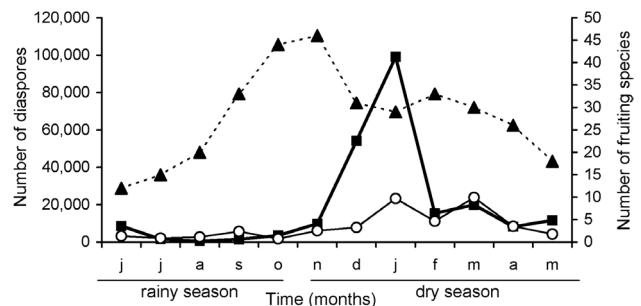
Annual abundance was significantly different between sites and traps ( $t_{62} = 3.25, p = 0.002$ ), more than twice as many seeds were captured in the burned site (233 686) compared to the unburned site (100,387). Even though there are species in fructification all year long, 91% of the seeds were dispersed during the dry season ( $t_{62} = 12.41, p < 0.0001$ ), particularly from October to February (Fig. 2), and 9% arrived in the traps during the rainy season. The highest availability of seeds occurred in January (Fig. 2). Species richness was significantly different between sites

( $t_{62} = 5.70, p < 0.001$ ), being higher in the burned site (100 species) than in the unburned one (89 species).

**Diversity, dominance and similarity.** The Shannon-Wiener diversity index of the total seed rain was ( $H' = 1.67$ ). In the unburned site the diversity index value ( $H' = 1.76$ ) was slightly higher than the one obtained in the burned site ( $H' = 1.45$ ); however, these values were statistically different ( $t_{0.05(2)20930} = 1.97 < 53.27$ ). The Berger-Parker dominance index for the total seed rain was  $D = 0.57$ . Dominance values were very similar for the burned site ( $D = 0.47$ ) and for the unburned site ( $D = 0.45$ ). This value also showed variation for the dry season ( $D = 0.56$ ) and for the rainy season ( $D = 0.46$ ). Similarity index values indicated that both sites shared 58% of the species. This percentage increased when similarity per season was analyzed, during the rainy season 75% of the species were shared, whereas 65% were shared in the dry season.

**Life cycle and form, dispersal syndromes.** Seed rain was composed mostly of perennial species (63%), and annuals were present in a smaller proportion (15%). The remaining species could not be identified. Species were classified according to Raunkjær's system (1934) as 22 phanerophytes, 12 cryptophytes, 10 chamaephytes, 28 hemicryptophytes, and 25 therophytes.

Seed rain abundance categorized by life form was statistically different between sites (burned and unburned;  $\chi^2 = 8 420.83$ ), and seasons of the year (rainy and dry;  $\chi^2 = 59 846.77$ ). Seasonally, there were differences between sites (rainy,  $\chi^2 = 6 909.53$ ; dry,  $\chi^2 = 5 256.92$ ). The differences per site were due to the number of diaspores in the burned site. Here with the exception of cryptophytes, the seed rain was 2 to 8 times more abundant in all life forms (Table 1) compared to the unburned site. Phanerophytes were the most abundant during the dry season, showing a 23-fold increase in diaspores compared to the rainy season (Table 1).



**Figure 2.** Abundance of diaspores in the seed rain (y= number of seeds) throughout the year (months) in burned (■) and unburned (○) sites in the Pedregal de San Ángel Ecological Reserve (REPSA). Dotted line shows the number of fruiting species (▲) in the REPSA (according to Meave et al., 1994).

Regardless of the site and season of the year, the majority of the seeds that we captured were from *Buddleja cordata*. Eighty-two percent of the seeds within the phanerophytes belonged to this species (193 649), representing a 58% of the total seed rain in this shrubland. 95.3% (54 314) of the diaspores of the chamaephyte life form corresponded to *Muhlenbergia robusta*, which had a contribution of 16% of the total dispersed seeds during 1 year. Terophytes contributed 32% of the total, including 3 species: *Drymaria laxiflora* (1 239), *Conyza canadensis* (2 514), and *Iresine diffusa* (4 746). *Conyza canadensis* was almost exclusive to the unburned site in the rainy season (2 351), while *Iresine diffusa* was almost exclusive to the burned site (4 746) during the dry season; *Drymaria laxiflora* was abundant in the burned site during both seasons of the year and contributed with fewer than 30 individuals in the unburned site (Appendix 1).

Distribution patterns of dispersal syndromes were statistically different between sites and seasons (unburned  $\chi^2= 37\ 688.05$ ; burned  $\chi^2= 53\ 636.59$ ). Abundance of diaspores was higher in the burned site in 9 of the 10 syndromes (Table 2). Throughout the year that we monitored seed rain 96% of the diaspores belonged to 5 syndromes: pogonochory (12 815), acantochory (23 573), sporochory (28 507), sclerochory (59 002), and pterochory (199 628). The highest contribution to the abundance of these syndromes was associated with the following species:

*Ageratina pichinchense* (acanthochory), *Begonia gracilis* (sporochory), *Buddleja cordata* (pterochory), *Conyza canadensis* (pogonochory), *Gamochaeta americana* (sporochory), *Muhlenbergia robusta* (sclerochory), *Rhynchelytrum repens* (pogonochory), *Stevia serrata* (pogonochory), *Verbesina virgata* (pterochory), and *Wigandia urens* (sporochory) (Appendix 1).

## Discussion

Fire affected severely the seed rain in the xerophytic shrubland of the El Pedregal de San Ángel Ecological Reserve. Our results indicate that fire had significant effects on the abundance, richness, similarity, dominance, and diversity of the seed rain in this ecosystem. In the burned site, vegetation was totally removed thus the “dispersal shadow” was amplified due to the lack of barriers for diaspores to fall on the soil. This space was also opened to those seeds with dispersal syndromes that prevent them from reaching the soil, causing them to remain trapped in the vegetation (Whelan, 1995). The elimination of vegetation by fire allowed the arrival of more propagules, which were mostly (95%) characterized by an anemochorous dispersal syndrome (i.e., pogonochory, sclerochory, sporochory, pterochory). Even though 79% of seed rain in the unburned site was typified also by anemochorous diaspores, the difference in percentage means a 3 times increase of seeds

**Table 1.** Diaspore numbers in the seed rain according to life forms (*sensu* Raunkiær, 1934). Phan: Phanerophytes, Cryp: Cryptophytes, Chama: Chamaephytes, Hemi: Hemicriptophytes, Thero: Therophytes. Unbur: Unburned site, Bur: Burned site

Life form	Site		Season		Rainy		Dry	
	Unbur	Bur	Rainy	Dry	Unbur	Bur	Unbur	Bur
Phan	70 316	165 723	9 775	226 264	2 221	7 554	68 095	158 169
Cryp	5 656	2 978	6 022	2 612	4 856	1 166	800	1 812
Chama	16 757	40 250	7 254	49 753	4 835	2 419	11 922	37 831
Hemi	2 064	16 484	2 028	16 520	409	1 619	1 655	14 865
Thero	2 931	7 772	4 241	6 462	2 603	1 638	328	6 134

**Table 2.** Diaspore numbers in the seed rain according to their dispersal syndromes (*sensu* Dansereau and Lems, 1957). Unbur: Unburned site, Bur: Burned site

Dispersal syndrome	Site		Season		Rainy		Dry	
	Unbur	Bur	Rainy	Dry	Unbur	Bur	Unbur	Bur
Acanthochory	19 677	3 896	288	23 285	170	118	19 507	3 778
Ascochory	60	72	44	88	14	30	46	42
Barochory	7	134	7	134	4	3	3	131
Sclerochory	16 609	42 393	9 304	49 698	6 018	3 286	10 591	39 107
Sporochory	6 515	21 951	10 180	18 286	3 854	6 291	2 516	15 660
Ixochory	157	759	360	556	108	252	49	507
Pogonochory	4 392	8 425	4 370	8 447	2 699	1 671	1 693	6 754
Pterochory	49 863	149 765	4 019	195 609	1 814	2 205	48 049	147 560
Sacochoy	205	5 412	673	4 944	146	527	59	4 885
Sarcochory	198	400	63	535	50	13	148	387



in the burned site compared to the unburned patch (Table 2). As natural regeneration in the REPSA depends largely on seed rain (30% of the species), the observed changes in this process might have important consequences in the composition and structure of this community as in others (Bradstock and O'Connell, 1988).

Even though seed rain richness was high in the REPSA, overall *Buddleja cordata* was the dominant species in this process. Particularly in the burned site, a 13 to 16% increase in anemochorous diaspores was associated with this species. This phanerophyte also has been reported to be dominant in the seed bank in the REPSA (Martínez-Orea et al., 2010), due to its huge production of tiny seeds easily dispersed by wind, showing successful germination but poor establishment (Mendoza-Hernández et al., 2010). Regardless, this species is favored by disturbances, as it is well represented in the secondary vegetation (Rzedowski and Rzedowski, 2001). Dominance changes through time (Whittaker, 1965), and in this sense, *Buddleja cordata* apparently is replacing *Senecio praecox* (Castillo-Argüero, pers. obs.), the dominant species in the recent past (Rzedowski, 1994), through a massive production of seeds, their easy dispersal, and long permanence in the seed bank. In fact this species has recently been observed as abundant in burned sites in the REPSA (Hernández-Herrerías, 2011). Hence, we suggest that seed rain can be the process that explains in part the direction of natural regeneration and future community structure.

The observed changes in the seed rain composition may reflect the natural disturbance regime of the ecosystem, just as in other seasonal communities. Disturbances such as fire would therefore have important consequences in the composition and structure of this community as in others (Bradstock and O'Connell, 1988; Juárez-Orozco, 2005). In the REPSA, this is evident in the case of the herbaceous and annual species, which have been gradually replaced by larger perennial species, such as some shrubs and trees that would have had low frequencies before a disturbance (Martínez-Mateos, 2001).

Similar to *Buddleja cordata*, *Muhlenbergia robusta* (chamaephyte) and *Wigandia urens* (phanerophyte), both with more than 10 000 diaspores in the seed rain in this study, showed a high dominance in the burned patch. These species could be also favored by disturbance because of their diaspores dispersed by wind (sclerochorous and sporochorous, respectively).

Additionally, these species are also heliophytes, and their probabilities to colonize the opened areas after a fire are increased. The implications of the increased opportunities for establishment of these species and of *Buddleja cordata* could be causing a shift in the life forms and/or species dominance in the community. This can

have 2 potential ecological consequences: 1), the shift in dominance from *Senecio praecox* to other phanerophytes such as *Buddleja cordata* and *Wigandia urens* or 2), the shift in dominance from *Senecio praecox* to chamaephytes such as *Muhlenbergia robusta*.

*Wigandia urens* is also an effective colonizer of deeply disturbed sites, and in the REPSA it might be sharing dominance with *Buddleja cordata* in areas with exposed rocky substrate. In contrast, *Muhlenbergia robusta* is dominant in areas with a deeper soil layer (Cano-Santana, pers. obs.). *Muhlenbergia robusta* is a species that survives after a fire due to its clumped growth habit which allows an extensive colonization (i.e., falange type growth *sensu* Silvertown and Charlesworth, 2007) that avoids germination and establishment of other species, arresting ecological succession (Martínez-Mateos, 2001). Other abundant species in the total seed rain may allow the maintenance of the original vegetation and the regeneration of disturbed sites in the REPSA. This is the case of *Ageratina pichinchense*, *Begonia gracilis*, *Echeveria gibbiflora*, *Eysenhardtia polystachya*, *Senecio praecox*, *Sedum* sp., *Senecio sanguisorbae*, and *Verbesina virgata* (Appendix 1).

The absence in the seed rain of 70% of species reported for the REPSA shrubland is probably due to a number of reasons: 1), 26% of the species are zoochorous; and a reduced activity of dispersers may be occurring because of restricted movements between fragments or due to the reduction of the habitat (Andrén, 1994; Donovan et al., 1995). A population size reduction of some potential dispersers has been reported for the REPSA by Hortelano-Moncada et al. (2009), who in particular report the loss of 6 species of mammals in the area. Nevertheless, mammal and bird populations still show high abundances in conserved patches where food resources are rich (Barja and List, 2006; Chávez-Castañeda and Gurrola-Hidalgo, 2009; Hortelano-Moncada et al., 2009), as those where certain species such as *Bursera* spp., *Opuntia* spp. and *Mammillaria* spp. are abundant; 2), barochorous species cover 4% of all species, and some heavy seeds do not disperse long distances, but fall beneath the parental plant (e.g., *Quercus deserticola*); and 3), 40% of those non registered species in the seed rain are dispersed by anemochory. The small size of these diaspores ( $\leq 1$ mm) reduces their probability of being sampled. This is the case of the Pteridophytes (10%) and Orchidaceae, Portulacaceae, and Piperaceae species (30%).

Although species richness was significantly higher in the burned site, the similarity with the unburned site was relatively high (58%). Native species were highly shared between sites (90%), while only 10% of the alochthonous species were shared between them. This last group of

species was registered in the seed rain probably due to their presence in the city where the REPSA is immersed, as occurs in other areas (Zedler et al., 1983; Keith and Bradstock, 1994). In this context, it is important to understand not only the dispersal mechanisms of the species in the seed rain, but the origin of these diaspores as well, to advance predictions on the arrival probability of alien species to the ecosystem. It is particularly important to characterize the presence of introduced species in the seed rain, since this type of plants may cause a decrease in the native species richness of any system (D'Antonio and Vitousek, 1992; Castillo-Argüero et al., 2009). This is the case of *Eucalyptus resinifera* an introduced species in Mexico that was sampled in the seed rain traps in both sites. According to Segura and Meave (2001), this species may be having noxious effects on the native vegetation of the REPSA.

The open space created by large disturbances such as fire could be a window of opportunity for native weeds or introduced species arriving in the seed rain, and so they represent a risk factor for a potential change in the structure and composition of this system. We found in the seed rain weeds and/or introduced species with relatively high abundances, such as *Digitaria ternata*, *Eruca sativa*, *Gamochaeta americana*, *Rhynchelitrum repens*, *Rumex obtusifolius*, *Schinus molle*, and *Sonchus oleraceus* that might be favored by fire, and also by the nutrients released by fire.

The feasibility of alternate states resulting from the community dynamics after a major disturbance would depend on stochastic filters related to the nature, timing, and magnitude of the disturbance, distance to the colonization source, and dispersal contingencies, as well as on deterministic filters such as physiological tolerances and interspecific interactions (Lortie et al., 2004). Therefore, we think there is an outstanding need to continuously study and monitor the changes in abundance and richness of the species in the seed rain of this system, in order to understand the dynamics of coexistence and replacement of species over time (Stohlgren et al., 1999). Seed rain is a process of vital importance in the study of regeneration of the REPSA and a sound understanding of it could be used as a tool to establish priorities of conservation and restoration in disturbed sites with a high environmental heterogeneity.

#### Acknowledgements

We are grateful to the 2 anonymous reviewers of this article. We also want to thank Silvia Iriarte-Vivar and Irene Pisanty-Baruch for language edition. Oswaldo Núñez helped in the seed traps setting in the field. Juan Manuel

Camacho-Altamirano and Irene Sánchez-Gallén helped in the separation of diaspores. Thanks to Marco A. Romero for his useful help in the elaboration of the map. Very special thanks to J. Alejandro Zavala-Hurtado and Gerardo Rivas for their thoughtful comments.

#### Literature cited

- Andrén, H. 1994. Effects of habitat fragmentation on birds and mammals in landscapes with different proportions of suitable habitat: A review. *Oikos* 71:355-366.
- Barja, I. and R. List. 2006. Faecal marking behaviour in ringtails (*Bassariscus astutus*) during the non-breeding period: spatial characteristics of latrines and single faeces. *Chemoecology* 16:219-222.
- Bradstock, R. A. and M. A. O'Connell. 1988. Demography of woody plants in relation to fire: *Banksia ericifolia* L.f. and *Petrophile pulchella* (Shrad.) R. Br. *Australian Journal of Ecology* 13:508-18.
- Carrillo-Trueba, C. 1995. El Pedregal de San Ángel. Universidad Nacional Autónoma de México. México, D.F. 177 p.
- Castillo-Argüero, S., G. Montes, M. Romero, Y. Martínez, P. Guadarrama, I. Sánchez and O. Núñez. 2004. Dinámica y conservación de la flora del matorral xerófilo de la Reserva Ecológica del Pedregal de San Ángel (D.F. México). *Boletín de la Sociedad Botánica de México* 74:51-75.
- Castillo-Argüero, S., Y. Martínez, M. Romero, P. Guadarrama, O. Núñez, I. Sánchez and J. Meave. 2007. La Reserva Ecológica del Pedregal de San Ángel: Aspectos florísticos y ecológicos. Coordinación de la Investigación Científica. Universidad Nacional Autónoma de México, México, D. F. 293 p.
- Castillo-Argüero, S., Y. Martínez, J. Meave, M. Hernández, O. Núñez, G. Santibáñez and P. Guadarrama. 2009. Flora de la Reserva del Pedregal de San Ángel: Susceptibilidad de la comunidad a la invasión de malezas nativas y exóticas. *In* Biodiversidad del Pedregal de San Ángel, A. Lot y Z. Cano-Santana (eds.). Universidad Nacional Autónoma de México, México, D.F. p. 107-133.
- Challenger, A. 1998. Utilización y conservación de los ecosistemas terrestres de México: pasado, presente y futuro. CONABIO, México, D. F. 847 p.
- Chávez-Castañeda, N. and M. A. Gurrola-Hidalgo. 2009. Avifauna. *In* Biodiversidad del Pedregal de San Ángel, A. Lot y Z. Cano-Santana (eds.). Universidad Nacional Autónoma de México, México, D. F. p. 261-275.
- D'Antonio, C. and P. Vitousek. 1992. Biological invasions by exotic grasses, the grass/fire cycle, and global change. *Annual Review of Ecology and Systematics* 23:63-87.
- de la Fuente, J. R. 2005. Acuerdo por el que se reazonifica, delimita e incrementa la zona de la Reserva Ecológica del Pedregal de San Ángel de Ciudad Universitaria. *Gaceta*

- UNAM 3813:19-21.
- Dansereau, P. and K. Lems. 1957. The grading of dispersal types in plant communities and their ecological significance. *Contributions de L'Institut Botanique de L'Université de Montreal* 71:5-52
- Donovan, T. M., R. Lamberson, A. Kimber, F. Thompson and J. Faaborg. 1995. Modeling the effects of habitat fragmentation on source and sink demography of neotropical migrant birds. *Conservation Biology* 9:1396-1407.
- Ezcurra, E. 1992. La ecología en los tiempos del cólera. *Epílogo. Ciencias* 28:73-78.
- Ezcurra, E., M. Mazari-Hiriart, I. Pisanty and A. Guillermo-Aguilar. 2002. Socioeconomic change and its impact on forest resources in the basin of Mexico. *In Ecological Studies* 156. Urban air pollution and forests. Resources at risk in the Mexico City air basin, M. E. Fenn, L. I. de Bauer, and T. Hernández-Tejeda (eds.). Springer. New York. p. 24-43.
- Fenn, M. E., L. I. de Bauer and T. Hernández-Tejeda. 2002. Summary of air pollution impacts on forests in the Mexico City air basin. *In Urban air pollution and forests. Resources at risk in the Mexico City air basin*, M. Fenn, L. de Bauer and T. Hernández-Tejeda (eds.). Springer. New York. p. 337-387.
- García, E. 1988. Modificaciones al sistema de clasificación climática de Köppen. UNAM Instituto de Geografía, México, D. F. 217 p.
- Hernández-Herrerías, L. B. 2011. Estructura de la comunidad vegetal y de dos poblaciones animales en zonas conservadas y perturbadas de la Reserva Ecológica del Pedregal de San Ángel. BSc. Thesis, Facultad de Ciencias, Universidad Nacional Autónoma de México. México, D. F. 52 p.
- Hortelano-Moncada, Y., F. Cervantes and A. Trejo-Ortiz. 2009. Mamíferos silvestres. *In Biodiversidad del Pedregal de San Ángel*, Universidad Nacional Autónoma de México. A. Lot y Z. Cano-Santana (eds.). Coordinación de la Investigación Científica, Universidad Nacional Autónoma de México. México, D. F. p. 277-293.
- Hortelano-Moncada, Y., F. Cervantes and A. Trejo-Ortiz. 2009. Mamíferos silvestres de la Reserva Ecológica del Pedregal de San Ángel en Ciudad Universitaria, Universidad Nacional Autónoma de México, México, D. F. *Revista Mexicana de Biodiversidad* 80:507-520.
- Juárez-Orozco, S. M. 2005. Efectos del fuego y la herbivoría sobre la biomasa aérea del estrato herbáceo de la Reserva del Pedregal de San Ángel. BSc. Thesis, Facultad de Ciencias, Universidad Nacional Autónoma de México, México, D. F. 90 p.
- Juárez-Orozco, S. and Z. Cano-Santana. 2007. El cuarto elemento y los seres vivos. *Ecología del fuego. Ciencias* 85:4-12.
- Keith, D. and R. Bradstock. 1994. Fire and competition in Australian heath: a conceptual model and field investigations. *Journal Vegetation Science* 5:347-354.
- Lortie, C., R. Brooker, P. Choler, Z. Kikvidze, R. Michalet, F. Pugnaire and R. Callaway. 2004. Rethinking plant community theory. *Oikos* 107:433-438.
- Lot, A. and Z. Cano-Santana. 2009. Biodiversidad del ecosistema del Pedregal de San Ángel. *In Biodiversidad del Pedregal de San Ángel*, Universidad Nacional Autónoma de México. A. Lot and Z. Cano-Santana (eds.). Coordinación de la Investigación Científica, Universidad Nacional Autónoma de México, México, D. F. 538 p.
- Lundholm, J. and A. Marlin. 2006. Habitat origins and microhabitat preferences of urban plant species. *Urban Ecosystems* 9:139-159.
- Magurran, A. 1988. *Ecological Diversity and its Measurement*. Princeton University Press, New Jersey. 185 p.
- Martin del Pozzo, A. 1995. La edad del Xitle. *In El Pedregal de San Ángel*, T. C. Carrillo (ed.). Universidad Nacional Autónoma de México, México, D. F. p. 48.
- Martínez-Mateos, E. 2001. Regeneración natural después de un disturbio por fuego en dos microambientes contrastantes de la Reserva Ecológica el Pedregal de San Ángel. BSc. Thesis, Facultad de Ciencias, Universidad Nacional Autónoma de México, México, D. F. 66 p.
- Martínez-Orea, Y., S. Castillo-Argüero, P. Guadarrama-Chávez and I. Sánchez-Gallén. 2010. Post-fire seed bank in a xerophytic shrubland. *Boletín de la Sociedad Botánica de México* 86:11-21.
- Meave, J., J. Carabias., V. Arriaga and A. Valiente-Banuet. 1994. Observaciones fenológicas en el Pedregal de San Ángel. *In Reserva Ecológica el Pedregal de San Ángel: Ecología, Historia Natural y Manejo*, A. Rojo (comp.). Universidad Nacional Autónoma de México, México, D. F. p. 91-106.
- Mendoza-Hernández, P. E., A. Orozco-Segovia and I. Pisanty. 2010. Germination, emergence, and survival of *Buddleia cordata* in an urban forest. *Ecological Restoration* 28:263-265.
- Raunkjær, C. 1934. *The life forms of plants and statistical plant geography*. Oxford University Press, Oxford. 632 p.
- Rivero-Serrano, O. 1983. Decreto para la creación de una zona ecológica inafectable. *Gaceta UNAM*. 59.
- Rojo, C. A. 1994. Reserva Ecológica "El Pedregal de San Ángel": Ecología, historia natural y manejo. Universidad Nacional Autónoma de México, México, D. F. 410 p.
- Rzedowski, J. 1994. Vegetación del Pedregal de San Ángel. *In Reserva Ecológica del Pedregal de San Ángel: Ecología, Historia Natural y Manejo*. A. Rojo (comp.). Universidad Nacional Autónoma de México, México, D. F. p. 9-64.
- Rzedowski, J. and G. Rzedowski. 2001. *Flora Fanerogámica del Valle de México*. Comisión Nacional para el Conocimiento y Uso de la Biodiversidad. Instituto de Ecología, A.C., Pátzcuaro Michoacán, México. 1406 p.

- Segura, B. and J. Meave. 2001. Effect of the removal of the exotic *Eucalyptus resinifera* on the floristic composition of a protected xerophytic shrubland in southern Mexico City. *In* Plant invasions: species ecology and ecosystem management, G. Brundu, J. Brock, I. Camarda, L. Chid and M. Wade (eds.). Backhuys Publishers, Leiden. p. 319-330.
- Silvertown, J. and D. Charlesworth. 2001. Introduction to plant population biology. 4<sup>th</sup> edn. Oxford, UK. Blackwell Science. 360 p.
- Soberón, J., M. de la Cruz-Rosas and G. Jiménez. 1991. Ecología hipotética de la Reserva del Pedregal de San Ángel. *Ciencia y Desarrollo* 99:25-38.
- Stohlgren, J., D. Binkley, G. Chong, M. Kalkhan, L. Schell, K. Bull, Y. Otsuki, G. Newman, M. Bashkin and Y. Son. 1999. Exotic plant species invade hot spots of native plant diversity. *Ecological Monographs* 69:25-46.
- Whelan, R. 1995. The ecology of fire. Cambridge University Press, Cambridge. 346 p.
- Whittaker, R. H. 1965. Dominance and diversity in land plant communities. *Science* 147:250-260.
- Zar, J. H. 1974. Biostatistical analysis and its measurement. Princeton University Press, New Jersey. 718 p.
- Zedler, P., C. Gautier and G. McMaster. 1983. Vegetation change in response to extreme events: The effect of a short interval between fires in California chaparral and coastal scrub. *Ecology* 64:809-818.

**Appendix 1.** List of species in the seed rain (S.R.) registered during 1999-2000. Characteristics such as dispersal syndrome (*sensu* Danserau and Lems, 1957) and life form (*sensu* Raunkiær, 1934) are included: He= hemicriptophyte, Cr= criptophyte, Fa= phanerophyte, Te= terophyte, Ca= chamaephyte. E= exotic, N= native and W= weed, for type of species column (according to [http://conabio.gob.mx/malezasde\\_mexico/fichas/ficha.htm](http://conabio.gob.mx/malezasde_mexico/fichas/ficha.htm)). The abundance category was set arbitrarily as follows: **1**= 1-500 diaspores in S.R., **2**= 501-1 000 diaspores in S.R., **3**= 1 001-5 000 diaspores in S.R., **4**= 5 001-10 000 diaspores in S.R., **5**=10 001-50 000 diaspores in S.R., **6**= more than 50 000 diaspores in S.R. Only identified species are included

<i>Class/Family/Species</i>	<i>Dispersal syndrome</i>	<i>Life form</i>	<i>Type of species</i>	<i>Relation in unburned site</i>	<i>Relation in burned site</i>	<i>Abundance category</i>
<b>Magnoliopsida</b>						
<b>Amaranthaceae</b>						
<i>Iresine cassiniiformis</i> Schauer	sacochory	Fa	N	1	5.4	1
<i>Iresine diffusa</i> Humb. Et Bonpl. Ex Willd	sacochory	Te	W	1	1185.5	3
<b>Anacardiaceae</b>						
<i>Schinus molle</i> L.	sarcochory	Fa	EW	2.2	1	1
<b>Apiaceae</b>						
<i>Arracacia toluensis</i> (Kunth) Hemsl.	sclerochory	Cr	W	1	5	1
<b>Asclepiadaceae</b>						
<i>Gonolobus uniflorus</i> Kunth	pogonochory	He	N	1.06	1	1
<i>Metastelma angustifolium</i> Torr.	pogonochory	Ca	N	2.5	1	1
<b>Asteraceae</b>						
<i>Ageratina mairiana</i> (DC.) R.M. King & H. Rob.	ixochory	Fa	N	1	4.83	2
<i>Ageratina pichinchense</i> (H.B.K.) King & Rob.	acanthochory	Fa	W	5.90	1	5
<i>Ageratina schaffneri</i> (Sch. Bip.) King & Rob.	pogonochory	Fa	N	1	45	1
<i>Baccharis sordescens</i> DC.	pogonochory	Ca	N	1	2.73	1
<i>Barkleyanthus salicifolius</i> (Ruiz & Pav.) Pers.	pogonochory	Fa	N	1	2	1
<i>Bidens aurea</i> (Aiton) Sherff	acanthochory	Te	W	0	2	1
<i>Bidens odorata</i> Cav.	acanthochory	Te	W	1	1	1
<i>Brickellia veronicifolia</i> (Kunth) A. Gray	pogonochory	Ca	N	1	3.23	1
<i>Conyza canadensis</i> (L.) Cronquist	pogonochory	Te	W	227.55	1	3
<i>Dahlia coccinea</i> Cav.	sclerochory	Cr	W	1	1.74	3
<i>Dahlia pinnata</i> Cav.	sclerochory	Cr	W	1	1.8	1
<i>Gamochaeta americana</i> (Mill.) Cabrera	sporochory	He	W	1	45.19	4
<i>Heterosperma pinnatum</i> Cav.	sclerochory	Te	W	0	2	1



## Appendix 1. Continues.

<i>Class/Family/Species</i>	<i>Dispersal syndrome</i>	<i>Life form</i>	<i>Type of species</i>	<i>Relation in unburned site</i>	<i>Relation in burned site</i>	<i>Abundance category</i>
<i>Piqueria trinervia</i> Cav.	sclerochory	He	N	0	192	1
<i>Senecio praecox</i> (Cav.) DC.	pogonochory	Fa	N	1.11	1	1
<i>Senecio sanguisorbae</i> DC.	pogonochory	He	N	1.27	1	3
<i>Sonchus oleraceus</i> L.	pogonochory	Te	EW	1	13	1
<i>Stevia ovata</i> Willd.	pogonochory	He	N	1	109	1
<i>Stevia serrata</i> Cav.	pogonochory	He	W	1	13.12	3
<i>Tagetes lunulata</i> Ortega	acanthochory	Te	W	1	102.2	2
<i>Tagetes micrantha</i> Cav.	acanthochory	Te	W	2	1	1
<i>Tithonia tubaeformis</i> (Jacq.) Cass.	barochory	Te	W	1	62	1
<i>Verbesina virgata</i> Cav.	pterochory	Fa	N	1	2.58	3
<b>Begoniaceae</b>						
<i>Begonia gracilis</i> Kunth	sporochory	Cr	N	48.82	1	3
<b>Brassicaceae</b>						
<i>Eruca sativa</i> Mill.	sclerochory	Te	EW	1	81.33	1
<i>Lepidium virginicum</i> L.	sporochory	Te	W	0	8	1
<b>Buddleiaceae</b>						
<i>Buddleja cordata</i> Kunth	pterochory	Fa	N	1	3.07	6
<b>Burseraceae</b>						
<i>Bursera cuneata</i> Engl.	sarcochory	Fa	N	1	9	1
<b>Cactaceae</b>						
<i>Opuntia robusta</i> Wendl.	sarcochory	Fa	N	10	0	1
<b>Caryophyllaceae</b>						
<i>Drymaria laxiflora</i> Benth.	sporochory	Te	N	1	29.22	3
<b>Casuarinaceae</b>						
<i>Casuarina equisetifolia</i>	pterochory	Fa	EW	2	0	1
<b>Convolvulaceae</b>						
<i>Convolvulus arvensis</i> L.	barochory	He	EW	0	2	1
<b>Crassulaceae</b>						
<i>Echeveria gibbiflora</i> DC.	sporochory	Ca	N	351.33	1	3
<i>Sedum sp.</i>	sporochory	Fa	N	2551	0	3
<b>Dioscoreaceae</b>						
<i>Dioscorea galeottiana</i> Martens	pterochory	Cr	N	0	106	1
<b>Euphorbiaceae</b>						
<i>Acalypha indica</i> L.	sporochory	Te	W	1	39	1
<i>Euphorbia anychioides</i> (Boiss.) Millsp	sporochory	Ca	N	1	1	1
<i>Euphorbia graminea</i> Jacq.	sclerochory	Te	W	1	1.75	1
<i>Euphorbia hirta</i> L.	sporochory	Te	W	0	1	1
<b>Fabaceae</b>						
<i>Brogniartia intermedia</i> Moric.	barochory	Ca	W	3	0	1
<i>Dalea zimapanica</i> S. Schauer	sclerochory	Fa	N	2.87	1	1
<i>Eysenhardtia polystachya</i> (Ortega) Sarg.	pterochory	Fa	N	2.12	1	3
<i>Phaseolus leptostachyus</i> Benth	barochory	He	N	0	3	1
<i>Phaseolus pauciflorus</i> Sessé et Moc.	barochory	He	N	0	4	1

## Appendix 1. Continues.

<i>Class/Family/Species</i>	<i>Dispersal syndrome</i>	<i>Life form</i>	<i>Type of species</i>	<i>Relation in unburned site</i>	<i>Relation in burned site</i>	<i>Abundance category</i>
<b>Hydrophyllaceae</b>						
<i>Wigandia urens</i> (Ruiz et Pav.) Kunth	sporochory	Fa	W	1	60.16	5
<b>Lamiaceae</b>						
<i>Leonotis nepetifolia</i> (L.) R. Brown	barochory	Te	EW	0	1	1
<i>Salvia mexicana</i> Sessé et Moc.	sclerochory	He	W	4	1	1
<i>Salvia tiliifolia</i> Vahl	sclerochory	He	W	1	2	1
<b>Lythraceae</b>						
<i>Cuphea wrightii</i> A. Gray	ascochory	Te	W	5	0	1
<b>Myrtaceae</b>						
<i>Eucalyptus resinifera</i> Smith	sporochory	Fa	E	7.81	1	1
<b>Oleaceae</b>						
<i>Fraxinus uhdei</i> (Wenz.) Lingelsh	pterochory	Fa	N	3	0	1
<b>Oxalidaceae</b>						
<i>Oxalis lunulata</i> Zucc.	sporochory	Cr	N	1	2	1
<b>Passifloraceae</b>						
<i>Passiflora subpeltata</i> Ortega	sarcochory	He	W	149	0	1
<b>Phytolaccaceae</b>						
<i>Phytolacca icosandra</i> L.	sarcochory	Ca	W	1	14	1
<b>Polygonaceae</b>						
<i>Rumex obtusifolius</i> L.	sporochory	He	EW	16	0	1
<b>Portulacaceae</b>						
<i>Portulaca mexicana</i> P. Wilson	sporochory	He	N	0	1	1
<b>Rubiaceae</b>						
<i>Bouvardia ternifolia</i> (Cav.) Schltld.	pterochory	Fa	W	1.79	1	1
<i>Crusea longiflora</i> (Wild. Ex Roem. et Schult.) W.R. Anderson	sclerochory	Te	W	17	1	1
<i>Galium uncinatum</i> DC.	acanthochory	He	N	1	5	1
<b>Sapindaceae</b>						
<i>Cardiospermum halicacabum</i> L.	barochory	He	W	2	0	1
<i>Dodonaea viscosa</i> Jacq.	pterochory	Fa	W	3.54	1	1
<b>Scrophulariaceae</b>						
<i>Penstemon campanulatus</i> (Cav.) Willd.	sclerochory	Ca	N	0	22	1
<b>Solanaceae</b>						
<i>Jaltomata procumbens</i> (Cav.) J.L. Gentry	sarcochory	Te	W	0	54	1
<i>Nicotiana glauca</i> Graham	sporochory	Fa	EW	1	7	1
<i>Physalis patula</i> Mill.	sarcochory	He	W	0	272	1
<b>Vitaceae</b>						
<i>Cissus sicyoides</i> L.	sarcochory	Ca	N	5.75	1	1
<b>Liliopsida</b>						
<b>Agavaceae</b>						
<i>Agave salmiana</i> Otto ex Salm-Dyck	ascochory	He	N	1	1.1	1
<i>Manfreda scabra</i> (Ort.) McVaugh	ascochory	He	N	1	1.36	1

## Appendix 1. Continues.

<i>Class/Family/Species</i>	<i>Dispersal syndrome</i>	<i>Life form</i>	<i>Type of species</i>	<i>Relation in unburned site</i>	<i>Relation in burned site</i>	<i>Abundance category</i>
<b>Alliaceae</b>						
<i>Milla biflora</i> Cav.	sclerochory	Cr	W	1	6	1
<b>Bromeliaceae</b>						
<i>Tillandsia recurvata</i> (L.) L.	pogonochory	Fa	N	1	3.29	1
<b>Calochortaceae</b>						
<i>Calochortus barbatus</i> (Kunth) Painter	sclerochory	Cr	W	1	67	1
<b>Commelinaceae</b>						
<i>Commelina diffusa</i> Burm. f.	sclerochory	He	W	0	1	1
<i>Commelina tuberosa</i> L.	sclerochory	He	N		2	1
<b>Cyperaceae</b>						
<i>Bulbostylis juncooides</i> (Vahl) Kük. ex Osten	sporochory	Cr	N	2.4	1	1
<i>Cyperus esculentus</i> L.	sporochory	Cr	EW	1	34	3
<i>Cyperus manimae</i> Kunth.	sclerochory	Cr	W	27.09	1	2
<b>Hipoxidaceae</b>						
<i>Hypoxis mexicana</i> Schult. et Schult. F.	sclerochory	Cr	W	1	2.38	1
<b>Poaceae</b>						
<i>Aegopogon tenellus</i> (DC.) Trin	sclerochory	Te	W	4.73	1	1
<i>Chloris gayana</i> Kunth.	sclerochory	He	EW	2	1	1
<i>Chloris virgata</i> Sw.	pogonochory	Te	W	1	5.17	1
<i>Digitaria ternata</i> (A.Rich.) Staff	sclerochory	Te	EW	84	1	1
<i>Microchloa kunthii</i> Desv.	sclerochory	He	N	17	0	1
<i>Muhlenbergia rigida</i> (Kunth)	sclerochory	He	N	1	9.5	1
<i>Muhlenbergia robusta</i> (E. Fourn.) Hitchc	sclerochory	Ca	N	1	2.75	6
<i>Paspalum postratum</i> Scribn. Et Meer.	sacochory	Te	W	2.23	1	1
<i>Paspalum tenellum</i> Willd.	sacochory	He	W	0	71	1
<i>Rhynchelytrum repens</i> (Willd.) C.E. Hubb.	pogonochory	He	EW	1	9.13	3
<i>Setaria grisebachii</i> E. Fourn.	sacochory	Te	W	1	18.71	1
<i>Setaria parviflora</i> (Poir.) Kerguélen.	sacochory	Te	W	1	7.29	1
<i>Sporobolus atrovirens</i> (Kunth) Kunth	sacochory	He	N	60	1	1
<i>Tripsacum dactyloides</i> (L.) L.	sclerochory	Fa	N	0	13	1