

The Journal of Threatened Taxa (JoTT) is dedicated to building evidence for conservation globally by publishing peer-reviewed articles online every month at a reasonably rapid rate at www.threatenedtaxa.org. All articles published in JoTT are registered under [Creative Commons Attribution 4.0 International License](https://creativecommons.org/licenses/by/4.0/) unless otherwise mentioned. JoTT allows unrestricted use, reproduction, and distribution of articles in any medium by providing adequate credit to the author(s) and the source of publication.

Journal of Threatened Taxa

Building evidence for conservation globally

www.threatenedtaxa.org

ISSN 0974-7907 (Online) | ISSN 0974-7893 (Print)

COMMUNICATION

A COMPREHENSIVE CHECKLIST OF ENDEMIC FLORA OF MEGHALAYA, INDIA

Aabid Hussain Mir, Krishna Upadhaya, Dilip Kumar Roy, Chaya Deori & Bikarma Singh

26 September 2019 | Vol. 11 | No. 12 | Pages: 14527–14561

DOI: 10.11609/jott.4605.11.12.14527-14561



For Focus, Scope, Aims, Policies, and Guidelines visit <https://threatenedtaxa.org/index.php/JoTT/about/editorialPolicies#custom-0>

For Article Submission Guidelines, visit <https://threatenedtaxa.org/index.php/JoTT/about/submissions#onlineSubmissions>

For Policies against Scientific Misconduct, visit <https://threatenedtaxa.org/index.php/JoTT/about/editorialPolicies#custom-2>

For reprints, contact <ravi@threatenedtaxa.org>

The opinions expressed by the authors do not reflect the views of the Journal of Threatened Taxa, Wildlife Information Liaison Development Society, Zoo Outreach Organization, or any of the partners. The journal, the publisher, the host, and the partners are not responsible for the accuracy of the political boundaries shown in the maps by the authors.

Partner



صندوق محمد بن زايد
للمحافظة على
الكائنات الحية

The Mohamed bin Zayed
SPECIES CONSERVATION FUND

Member



Publisher & Host





A COMPREHENSIVE CHECKLIST OF ENDEMIC FLORA OF MEGHALAYA, INDIA

Aabid Hussain Mir¹ , Krishna Upadhaya² , Dilip Kumar Roy³ , Chaya Deori⁴  & Bikarma Singh⁵ 

ISSN 0974-7907 (Online)
ISSN 0974-7893 (Print)

PLATINUM
OPEN ACCESS



¹ Department of Environmental Studies, North-Eastern Hill University, Shillong, Meghalaya 793022, India.

² Department of Basic Sciences and Social Sciences, North-Eastern Hill University, Shillong, Meghalaya 793022, India.

^{3,4} Botanical Survey of India, Eastern Regional Centre, Shillong, Meghalaya 793003, India.

⁵ CSIR - Indian Institute of Integrative Medicine, Canal Road, Jammu 180001, India.

¹ aabidm4@gmail.com, ² upkri@yahoo.com (corresponding author), ³ dilipbsierc@gmail.com,

⁴ drchayadeoribsi@gmail.com, ⁵ drbikarma@iiim.ac.in

Abstract: The geographical distribution of plants of Meghalaya show that a total of 548 plant taxa belonging to 302 genera and 100 families are endemic to northeastern India or Indo-Burma or the eastern Himalaya region. Of these, 115 species are exclusively endemic to the state of Meghalaya. The dominant life form is epiphytes (25.4%), followed by trees (25%), shrubs (21.7%), herbs (21%), climbers (6.6%) and parasites (0.4%). In terms of species richness, Orchidaceae is the largest family with 146 species and *Bulbophyllum* is the dominant genera represented by 15 species. The present investigation reveals that most species considered endemic to the state of Meghalaya has extended geographic distribution to neighbouring states and other countries. Majority of the endemic taxa are restricted to protected areas such as national parks, wildlife sanctuaries, conservation reserves, and small forest patches preserved in the form of community forests or sacred groves. Lesser known species with small populations outside the protected areas are on the verge of extinction due to a number of anthropogenic activities, hence warranting immediate conservation measures.

Keywords: Conservation, diversity, forest fragmentation, Indo-Burma hotspot, northeastern India, Orchidaceae.

DOI: <https://doi.org/10.11609/jott.4605.11.12.14527-14561>

Editor: K. Haridasan, Palakkad District, Kerala, India.

Date of publication: 26 September 2019 (online & print)

Manuscript details: #4605 | Received 03 October 2018 | Final received 29 July 2019 | Finally accepted 21 August 2019

Citation: Mir, A.H., K. Upadhaya, D.K. Roy, C. Deori & B. Singh (2019). A comprehensive checklist of endemic flora of Meghalaya, India. *Journal of Threatened Taxa* 11(12): 14527–14561. <https://doi.org/10.11609/jott.4605.11.12.14527-14561>

Copyright: © Mir et al. 2019. Creative Commons Attribution 4.0 International License. JoTT allows unrestricted use, reproduction, and distribution of this article in any medium by adequate credit to the author(s) and the source of publication.

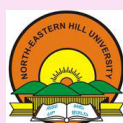
Funding: Ministry of Environment, Forests and Climate Change, Government of India (No. 14/25/2011/ERS/RE).

Competing interests: The authors declare no competing interests.

Author details: DR. AABID HUSSAIN MIR worked extensively in community forests of Meghalaya for his PhD thesis and his interests include plant diversity and conservation biology. DR. KRISHNA UPADHAYA is a plant ecologist and actively involved in research dealing with plant diversity, ecosystem functioning and regeneration ecology of endemic and threatened species. DR. DILIP KUMAR ROY from Botanical Survey of India, Shillong is a plant taxonomist with interest in field botanical exploration and higher plant taxonomy. DR. CHAYA DEORI working as Scientist D in Botanical Survey of India, Shillong is specialized in Orchidaceae. DR. BIKARMA SINGH working as Scientist in CSIR-Indian Institute of Integrative Medicine, Jammu is higher plant taxonomist working on ethnobotany and plant natural products for value addition.

Author contribution: KU conceived the idea. KU, AHM, DKR, CD and BS collected, compiled and prepared the manuscript

Acknowledgements: We thank the Headman and local people of various localities of the state of Meghalaya for their help in various ways. The help received from Department of Forest, Government of Meghalaya and Head of Office & other staffs of Botanical Survey of India, Eastern Regional Centre, Shillong is also acknowledged.



INTRODUCTION

Population explosion and associated human driven major changes in land use have led to the rapid disappearance of forests and endangered many important plant species and their habitats (Defries 2010). It has also increased the risks of loss of many vital services on which human beings depend (Khandel et al. 2012). Anthropogenic disturbances and its related habitat fragmentation have been identified as a major cause of biodiversity loss (Pao & Upadhaya 2017). Of particular concern are those places with special biological features that comprise of high diversity and high levels of endemism. Such areas have caught the attention of conservation scientists, practitioners and planners (Margules & Pressey 2000; Myers et al. 2000). The degree of endemism for an area is cited as a measure of the uniqueness of the flora, and consequently is important for prioritizing sites for conservation (Young et al. 2002). Endemic species with limited geographical ranges are more susceptible to extinction than widely distributed species as the former is extremely vulnerable to environmental change and anthropogenic disturbances (Myers 1988). Given that endemism and extinction risks are closely coupled, actions to minimize global extinction needs to focus on patterns in endemism and range-restricted species (Pimm & Brooks 2000).

The state of Meghalaya (owing to the diverse ecological conditions such as wide variation in rainfall, temperature, altitude and edaphic conditions) supports luxuriant growth of different types of vegetation, viz: tropical evergreen, tropical semi evergreen, tropical moist and dry deciduous, subtropical broad leaved hill forests, subtropical pine forests, temperate forests, and grasslands (Champion & Seth 1968; Rao & Hajra 1986). The state, being a part of Indo-Burma hotspot, is rich in plant diversity with a high level of endemism (Khan et al. 1997). The floristic richness of the state has been recognised by several earlier workers (Hooker 1854, 1872–97, 1904; Brandis 1906; Kanjilal et al. 1934–40). Although a total of 3,334 plant species are known from the state (Khan et al. 1997), the information on endemic species is scarce and a complete checklist of endemic plants is still lacking. Though some studies have been carried out to enumerate endemic species (Khan et al. 1997; Lakdong & Barik 2006; Lakdong 2009), these studies are inadequate. Many new taxa have been described from the state in the recent past and several taxa which were earlier considered as endemic to the state have been reported from other parts of the world. Hence, it has become necessary to assess the current

status of endemic plants of the state. The present study was conducted to assess the diversity of endemic plants in the state and provide base line information on their distribution. Such a study will help in taking effective measures for the conservation and management of the intended target species.

MATERIALS AND METHODS

Study area

The state of Meghalaya in northeastern India covers an area of 22,429km² with an altitudinal range of 50–1,990 m. Geographically, being a part of the Indo-Burma hotspot, it is also close to the eastern Himalaya. The vegetation of the state can be broadly categorized into tropical forests, subtropical broadleaved and pine forests, temperate forests and grasslands (Haridasan & Rao 1985–1987 (Images 1–6)). The climate of the area is monsoonal with distinct wet and dry seasons. The wet season extends from May and continues up to October, whereas the dry season extends from November to March. The western part of Meghalaya (Garo Hills) being relatively at a low elevation, experiences high temperatures, whereas Khasi and Jaintia hills have low temperatures. The average rainfall of the state ranges from 2,689mm to 4,000mm, except Cherrapunjee and Mawsynram that record the highest rainfall (12,000–13,000 mm) in the world. The state consists mainly of Archean rock formations, with rich deposits of valuable minerals like coal, limestone, uranium and sillimanite.

Data collection

The database of endemic species was prepared with the help of published literature (Kanjilal et al. 1934–1940; Myrthong 1980; Balakrishnan 1981–1983; Joseph 1982; Kumar 1984; Haridasan & Rao 1985–1987; Ahmedullah & Nayar 1986; Kataki 1986; Rao & Hajra 1986; Renuka 1996; Khan et al. 1997; Nayar & Sastry 1987, 1988, 1990; Seethalakshi & Kumar 1998; Walter & Gillett 1998; Jamir & Pandey 2003; Upadhaya et al. 2003, 2013; Pandey et al. 2005; Singh et al. 2015) and referring to the specimens deposited in the herbaria of the Botanical Survey of India, Eastern Regional Centre, Shillong (ASSAM) and Department of Botany, North-Eastern Hill University, Shillong (NEHU). This was followed by rapid field exploration in different parts of the state during 2012–2016. Collected plant materials were processed and herbarium specimens prepared following Jain & Rao (1977). Identification was confirmed with the help of available literature (Kanjilal



Image 1. An overview of dense forest at Nokrek Biosphere Reserve.



Image 2. An overview of Mawsynram area in Meghalaya.



Image 3. An overview of Sacred Grove at Mawnai.



Image 4. Land scape at Ranikor in West Khasi Hills of Meghalaya.



Image 5. Tropical forest in Balphakram National Park in Meghalaya.



Image 6. Subtropical forest at Garo Hills in Meghalaya.

et al. 1934–1940; Balakrishnan 1981–1983; Haridasan & Rao 1985–1987) and by comparing with the specimens, housed at ASSAM. Voucher specimens were deposited in the herbaria at ASSAM. The distribution of the species in the state and other parts of the world was thoroughly

reviewed. The species whose distribution is restricted only to Meghalaya were considered as ‘narrow endemic’ and those that are distributed in northeastern India, Indo-Burma and/or eastern Himalaya hotspots were considered as endemic.

RESULTS AND DISCUSSION

In the database, a total of 548 species distributed in 100 families and 302 genera were recorded (Appendix 1). Of these, epiphytes were dominant with 139 species, followed by trees (137 species), shrubs (119) and herbs (115) (Images 7–64). Other life forms (climbers and parasites) were represented by <50 species (Fig. 1). Out of the total, 115 species were exclusively endemic to the state and the rest (433) were restricted to northeastern India or Indo-Burma or the eastern Himalayan region. In terms of species richness, Orchidaceae was the dominant family with 146 species, followed by Rubiaceae (27 species), Acanthaceae (23), Lauraceae and Poaceae (21 species each), Zingiberaceae (18), Ericaceae (14), Rosaceae (13), Euphorbiaceae (12), Fabaceae (10), Annonaceae and Myrsinaceae (9 species each), Araceae, Balsaminaceae and Elaeocarpaceae (8 species each), Magnoliaceae and Melastomataceae (7 species each), Araliaceae, Celastraceae, Gesneriaceae, Lamiaceae and Theaceae (6 species each), Anacardiaceae, Asclepiadaceae, Myrtaceae, Oleaceae and Primulaceae (5 each), Aquifoliaceae, Araceae, Asparagaceae, Begoniaceae, Clusiaceae, Ebenaceae, Menispermaceae, Piperaceae, Rutaceae and Sapotaceae (4 each), Thymelaeaceae, Boraginaceae, Eriocaulaceae, Loranthaceae, Malpighiaceae, Ranunculaceae, Sabiaceae and Salicaceae (3 each), Achariaceae, Apiaceae, Apocynaceae, Aspleniaceae, Asteraceae, Campanulaceae, Caprifoliaceae, Combretaceae, Convolvulaceae, Moraceae, Pentaphragmaceae, Phyllanthaceae, Putranjivaceae, Sterculiaceae and Vitaceae (2 species each), while the rest of the 40 families were monospecific (Fig. 2). The genus *Bulbophyllum* had the maximum number of species (15), followed by *Coelogyne* (14), *Eria* (13), *Dendrobium*, *Strobilanthes* and *Impatiens* (8 each), *Agapetes*, *Magnolia* and *Ardisia* (7 species each), *Elaeocarpus* (6), while the rest of the 292 genera had less than six species each.

The current study allowed the preparation of an exhaustive checklist of the endemic flora of Meghalaya, thus updating the previous works in which the endemic taxa of the state was analyzed. It was found that the region has a rich endemic floral diversity as evidenced by the presence of 548 species. The preponderance of species belonging to the family Orchidaceae might be attributed to the diverse nature of the family and habitat suitability. Moreover, the higher number of *Bulbophyllum* species endemic to the region makes the family dominant. Series of plant diversity studies carried out in various parts of the state also showed

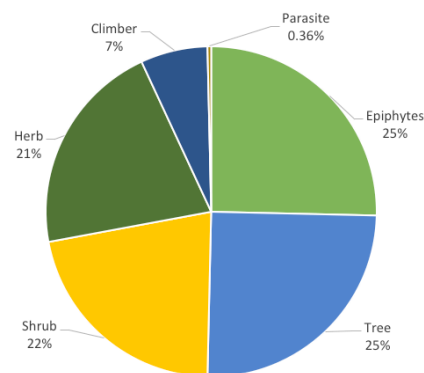


Figure 1. Distribution of life form of endemic plants of Meghalaya.

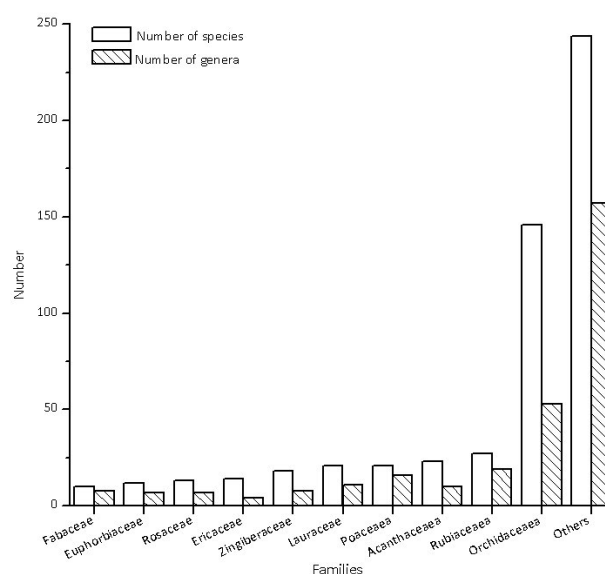


Figure 2. Top 10 families with their respective genera and species.

Orchidaceae to be one of the families with the highest number of species representatives (Hooker 1872–1997; Jamir & Pandey 2003; Upadhaya et al. 2014). The presence of various primitive families (Magnoliaceae, Ranunculaceae, Annonaceae, Lauraceae, Piperaceae, Aristolochiaceae) provides an idea that endemism of the area is also attributed to primitiveness in terms of evolutionary age and affinities. Climatic factors including rainfall and temperature might also have contributed to high species richness and endemism of the area (Gentry 1982). Moreover, geographic location of the region in the confluence of three biogeographic realms (Indian, Indo-Malayan, and Indo-Chinese) has probably led to the organization of taxa with unique biological properties. Since it is significant to conserve endemic flora, it is equally important to accurately identify them in order to accord them conservation priorities. Many of the endemic species play an

important role as they are used as timber (*Magnolia rabaniana* Hook.f. & Thomson, *M. lanuginosa* Wall.) (Mir et al. 2016, 2017), for fuel and firewood (*Schima khasiana* Dyer., *Viburnum foetidum* Wall., *Elaeocarpus lancifolius* Roxb., *Glochidion thomsonii* Hook.f., *Litsea laeta* (Wall. ex Nees) Hook.f., *Neolitsea umbrosa* (Nees) Gamble, *Ulmus lanceifolia* Roxb.), as medicine in traditional herbalism (*Goniothalamus simonosii* Hook.f. & Thomson, *Trachyspermum khasianum* H.Wolff, *Ilex khasiana* Purkay., *Ilex embelioides* Hook.f., *Euonymus lawsonii* C.B. Clarke ex Prain, *Nepenthes khasiana* Hook.f., *Citrus latipes* Hook.f. & Thomson) and heavily exploited (*Coelogyne flaccida* Lindl., *Dendrobium hookerianum* Lindl., *Micropera rostrata* (Roxb.) N.P. Balakr., *Paphiopedilum insigne* (Wallich ex Lindley) Pfitzer) for ornamental purposes.

The present study reveals the presence of 548 species as endemic to the region, in contrast to 1,236 species reported by earlier workers (Khan et al. 1997; Jamir & Pandey 2003). Likewise, many species (e.g., *Acer laevigatum* Wall., *Aeschynanthes sikkimensis* (Clarke) Stapf., *Carpinus viminea* Wall. ex Lindl., *Cinnamomum bejolghota* (Buch-Ham.) Sweet., *Dendrobium devonianum* Paxton., *Hedera nepalensis* K. Koch, *Porana racemosa* Roxb., *Styrax hookeri* C.B. Clarke, *Turpinia nepalensis* Wall. ex Wight & Arn., *Berchemia floribunda* (Wall.) Brongn., *Chirita hamosa* R.Br., *Calanthe puberula* Lindl., *Drymycarpus racemosus* (Roxb.) Hook.f., *Trachelospermum axillare* Hook.f., *Ilex fragilis* Hook.f., *Euonymus bullatus* Wall. ex Lodd, *Cyathea gigantea* (Wall. ex Hook.) Holttum, *Anoectochilus roxburghii* (Wall.) Lindl., *Pholidota imbricata* Lindl.) which were among the reported endemic species (Khan et al. 1997; Jamir & Pandey 2003; Lakadong & Barik 2006; Upadhaya et al. 2013, 2014), have lost their endemic status as they have been reported from other parts of the world. Similar findings were observed from other parts of India, where 62 earlier reported endemic genera of angiosperms have been found in other countries, and some taxonomic changes to some genera have also affected their status (Irwin & Narasimhan 2011). The present checklist substantially reduces the number of endemic species that was estimated in previous studies, but in no way downlists Meghalaya's global importance in endemism.

Therefore, it may be concluded that the state is rich in endemic flora. But since the last few decades, the forests in the region have been disappearing at an alarming rate due to fragmentation, expansion of agriculture, logging, mining and other developmental activities (Upadhaya et al. 2013; Pao & Upadhaya 2017). Destruction of forests

has resulted in the degradation of the environment and habitat of native species of the state. The rich genetic diversity has been depleted and many plant species are facing the threat of extinction in their natural habitats (Haridasan & Rao 1985–87). This is evident by the fact that some of the species, exclusively endemic to the state (*Carex repanda* C.B. Clarke and *Sterculia khasiana* Debb.) are considered possibly Extinct (Nayar & Sastry 1987; Upadhaya et al. 2013). There is an urgent need for conservation of the remaining endemic flora of the region. Ecological restoration, through re-vegetation of disturbed areas should be done, using indigenous tree species. Intensive taxonomic and phylogenetic studies, vegetation surveys and biogeographical research should be conducted on the endemic flora. Moreover, the in situ conservation efforts have to be supported by adequate ex situ conservation measures.

REFERENCES

- Ahmedullah, M. & M.P. Nayar (1986). *Endemic plants of the Indian region*. Volume 1. Botanical Survey of India, Calcutta, 261pp.
- Balakrishnan, N.P. (1981–1983). *Flora of Jowai*. Vol. I & II. Botanical survey of India, Howrah, 666pp.
- Brandis, D. (1906). *Indian Trees: An Account of Trees, Shrubs, Woody Climbers, Bamboos, and Palms Indigenous or Commonly Cultivated in the British Indian Empire*. New York Botanical Garden A. Constable & Co. Ltd. London, 574pp.
- Champion, H.G. & S.K. Seth (1968). *A Revised Survey of the Forest Types of India*. Manager of Publications, Government of India, Delhi, 404pp.
- Defries, R. (2010). Interactions between protected areas and their surroundings in human-dominated tropical landscapes. *Biological Conservation* 143: 2870–2880.
- Gentry, A.H. (1982). Neotropical floristic diversity: phyto-geographical connections between Central and South America, Pleistocene climatic fluctuations, or an accident of the Andean orogeny. *Annals of Missouri Botanical Garden* 69: 557–593. <https://www.jstor.org/stable/2399084>.
- Haridasan, K. & R.R. Rao (1985–1987). *Forest Flora of Meghalaya*. Vol. I & II. Bishen Singh Mahendra Pal Singh, Dehra Dun, India, 937pp.
- Hooker, J.D. (1854). *Himalayan Journals or Notes of a Naturalist in Bengal, the Sikkim and Nepal Himalayas, the Khasia mountains*. Vol. I & II. J. Murray, Albemarle Street, Bradbury and Evans, Printers Whitefriars, London, 530pp.
- Hooker, J.D. (1872–1897). *The Flora of British India*. Vol. I to VII. L. Reeva and Company, London.
- Hooker, J.D. (1904). *A Sketch of Flora of British India*. Eyre and Spottiswoode, London, 55pp.
- Irwin, S.J. & D. Narasimhan (2011). Endemic genera of Angiosperms in India: a review. *Rheedea* 21(1): 87–105.
- Jain, S.K. & R.R. Rao (1977). *A Handbook of Field and Herbarium Methods*. Today & Tomorrow's Printers and Publishers, New Delhi, India, 157pp.
- Jamir, S.A. & H.N. Pandey (2003). Vascular plant diversity in the sacred groves of Jaintia Hills in northeast India. *Biodiversity and Conservation* 12: 1497–1510.
- Joseph, J. (1982). *Flora of Nongpoh and its Vicinity*. Forest Department, Government of Meghalaya, 376pp.
- Kanjilal, V.N., P.C. Kanjilal, A. Das, R.N. De & N.L. Bor (1934–1940). *Flora of Assam*, Vol. I to V. Government Press, Shillong, India.



Image 7. *Acanthus leucostachyus*



Image 8. *Aeschynanthus hookeri*



Image 9. *Agapetes obovata*



Image 10. *Agapetes rugosus*



Image 11. *Agrostophyllum callosum*



Image 12. *Aquilaria khasiana*



Image 13. *Aristolochia saccata*



Image 14. *Balanophora dioica*



Image 15. *Baliospermum calycinum*



Image 16. *Begonia hatacoa*



Image 17. *Belshmedia assamica*



Image 18. *Berberis wallichiana*



Image 19. *Brachycorythis galeandra*



Image 20. *Bulbophyllum gymnopus*



Image 21. *Bulbophyllum leopardianum*



Image 23. *Bulbophyllum manabendrae*



Image 24. *Caulokaempferia secunda*



Image 22. *Bulbophyllum leopardianum*



Image 26. *Citrus latipes*



Image 27. *Coelogyne barbata*



Image 25. *Ceropegia angustifolia*



Image 28. *Dendrobium khasianum*



Image 29. *Elaeocarpus rugosus*



Image 30. *Eria carinata*



Image 31. *Erythroxylum kunthianum*



Image 32. *Euonymus lawsonii*



Image 33. *Garcinia anomala*



Image 34. *Glochidion acuminatum*



Image 35. *Glochidion thomsonii*



Image 36. *Goniotalamus simonsii*



Image 37. *Gynocardia odorata*



Image 38. *Ilex embelioides*



Image 39. *Ilex khasiana*



Image 40. *Ilex venulosa*



Image 41. *Illicium griffithii*



Image 42. *Impatiens acuminata*



Image 43. *Impatiens khasiana*



Image 44. *Impatiens laevigata*



Image 45. *Lasianthus hookeri*



Image 46. *Lindera latifolia* Hook. f.



Image 47. *Luculia pinceana*



Image 48. *Magnolia lanuginosa*



Image 49. *Magnolia punduana*



Image 50. *Memecylon cerasiforme*



Image 51. *Neolitsea umbrosa*



Image 52. *Nepenthes khasiana*



Image 53. *Ormosia robusta*



Image 54. *Papilionanthe teres*



Image 55. *Photinia cuspidata*



Image 56. *Psychotria symplicifolia*



Image 57. *Rhododendron formosum*



Image 58. *Salacia khasiana*



Image 59. *Schima khasiana*



Image 60. *Strobilanthes hamiltoniana*



Image 61. *Sympagis maculata*



Image 62. *Vanda coerulea*



Image 63. *Viburnum simonsii*



Image 64. *Zingiber bipinianum*

- Kataki, S.K. (1986).** *Orchids of Meghalaya*. Forest Department, Government of Meghalaya, India, 380pp.
- Khan, M.L., S. Menon & K.S. Bawa (1997).** Effectiveness of the protected area network in biodiversity conservation: A case study of Meghalaya State. *Biodiversity and Conservation* 6: 853–868.
- Khandel, K.A., S. Ganguly, A. Bajaj & S. Khan (2012).** New records, ethno-pharmacological applications and indigenous uses of *Gloriosa superba* L. (Glory Lily) practices by tribes of Pachmarhi Biosphere Reserve, Madhya Pradesh, Central India. *Nature and Science* 10(5): 23–48.
- Kumar, Y. (1984).** *Studies on the Flora of Balphakram Wild Life Sanctuary, Garo Hills, Meghalaya*. Ph.D. Thesis, Department of Botany, North-Eastern Hill University, Shillong.
- Lakadong, N.J. (2009).** *Assessment of Endemism, Rarity and Conservation Status of a few Medicinal Plant Species of Meghalaya*. PhD Thesis, Department of Botany, North-Eastern Hill University, Shillong, 282pp.
- Lakadong, N.J. & S.K. Barik (2006).** Diversity and distribution of endemic plant species of Meghalaya, India. pp 274–311. In: Pandey, H.N. & S.K. Barik (Eds). *Ecology, Diversity and Conservation of Plants and Ecosystems in India*. Regency Publications, New Delhi, xv+436pp.
- Margules, C.R. & R.L. Pressey (2000).** Systematic conservation planning; *Nature* 405: 243–253.
- Mir, A.H., K. Upadhaya, N. Odyuo & B.K. Tiwari. (2017).** Rediscovery of *Magnolia rabaniana* (Magnoliaceae): A threatened tree species of Meghalaya, northeast India. *Journal of Asia Pacific Biodiversity* 10(1): 127–131. <https://doi.org/10.1016/j.japb.2016.10.004>
- Mir, A.H., V. Iralu, N.T. Pao, G. Chaudhury, C.G. Khonglah, K.L. Chaudhary, B.K. Tiwari & K. Upadhaya (2016).** *Magnolia lanuginosa* (Wall.) Figlar & Noot. in West Khasi Hills of Meghalaya, Northeastern India: Re-collection and implications for conservation. *Journal of Threatened Taxa* 8(1): 8398–8402. <https://doi.org/10.11609/jott.2242.8.1.8398-8402>
- Myers, N. (1988).** Threatened biotas: 'hotspots' in tropical forests. *The Environmentalist* 8: 187–208.
- Myers, N., R.A. Mittermeier, C.G. Mittermeier, G.A. Fonseca & J. Kent (2000).** Biodiversity hotspots for conservation priorities. *Nature* 403: 853–857. <https://doi.org/10.1038/35002501>
- Myrthong, S. (1980).** *Studies on Monocot Flora of Meghalaya*. Ph.D Thesis, Department of Botany, North-Eastern Hill University, Shillong, India, 787pp.
- Nayar, M.P. & A.R.K. Sastry (1987).** *Red Data Book of Indian Plants*. Vol. I. Botanical Survey of India, Calcutta, India, 366pp.
- Nayar, M.P. & A.R.K. Sastry (1988).** *Red Data Book of Indian Plants*. Vol. II. Botanical Survey of India, Calcutta, India, 268pp.
- Nayar, M.P. & A.R.K. Sastry (1990).** *Red Data Book of Indian Plants*. Vol. III. Botanical Survey of India, Calcutta, India, 271pp.
- Pandey, H.N., K. Upadhaya, S.A. Jamir, P.S. Law & R.S. Tripathi (2005).** Floristic diversity in the sacred groves of Meghalaya, pp. 83–99. In: Pandey, A.K., J. Wen & J.V.V. Dogra (eds.). *Plant Taxonomy: Advances and Relevance*. CBS Publishers and Distributors, New Delhi, India, 541pp.
- Pimm, S.L. & T.M. Brooks (2000).** The sixth extinction: how large, where, and when? pp. 46–62. In: Raven, P.H. & T. Williams (eds.). *Nature and Human Society: The Quest for A Sustainable World*. National Academy Press, Washington, DC, 625pp.
- Pao, N.T. & K. Upadhaya (2017).** Effect of fragmentation and anthropogenic disturbances on floristic composition and structure of subtropical broad leaved humid forest in Meghalaya, northeast India. *Applied Ecology and Environmental Research* 15(4): 385–407.
- Rao, R.R., & P.K. Hajra (1986).** Floristic diversity of eastern Himalaya in a conservation perspective. *Proceedings Indian Academy of Sciences (Supplementary- Nov)*. 103–125.
- Renuka, C. (1996).** Rattans of North eastern India- a cause for great concern. *Arunachal Pradesh Forest News* 14(2): 8–11.
- Seethalakshmi, K.K. & M.S.M. Kumar (1998).** Bamboos of India: A Compendium. Kerala Forest Research Institute Peechi and International Network for Bamboo and Rattan, Beijing, 342pp.
- Singh, P., K. Karthigeyan, P. Lakshminarasimhan & S.S. Dash (2015).** *Endemic Vascular Plants of India*. Botanical Survey of India, Kolkata, India, 339pp.
- Upadhaya, K., H.N. Pandey, P.S. Law & R.S. Tripathi (2003).** Tree diversity in sacred groves of the Jaintia hills in Meghalaya, North East India. *Biodiversity and Conservation* 12: 583–597.
- Upadhaya, K., G. Choudhury & K. Sarma (2014).** Anthropogenic threats and plant diversity conservation in Cherrapunji- one of the wettest places on Earth. *Keanean Journal of Science* 3: 3–20.
- Upadhaya, K., N. Thapa, J.N. Lakadong, S.K. Barik & K. Sarma (2013).** Priority areas for conservation in North East India: A case study in Meghalaya based on plant species diversity and endemism. *International Journal of Ecology and Environmental Sciences* 39(2): 125–136.
- Walter, K.S. & H.J. Gillett (1998).** *IUCN Red List of threatened plants*. Compiled by the world Conservation Union, Gland, Switzerland and Cambridge, 31pp.
- Young, K.R., C. Ulloa-Ulloa, J.L. Luteyn & S. Knapp (2002).** Plant evolution and endemism in Andean South America: an introduction. *The Botanical Review* 68: 4–27.

Appendix 1. List of endemic plant species along with their habit and distribution.

Name	Family	Habit	Voucher number	Nativness	Distribution	
					Meghalaya	Worldwide
<i>Acanthus leucostachyus</i> Wall. ex Nees	Acanthaceae	Sh	ASSAM, A.H. Mir, 00911 (10.x.2016) Phlangwanbroi, East Khasi Hills	E	Nokrek, Balphakram, Jowai	Indo-Burma
<i>Gymnostachyum venustum</i> (Nees) T.Anderson	Acanthaceae	H	ASSAM, D.K. Roy 129633 (11.iii.2013) Balpakram, South Garo Hills	E	Dawki, Sohka, Nokrek, Balpakram	Northeastern India
<i>Justicia khasiana</i> C.B.Clarke	Acanthaceae	H	ASSAM, A.H. Mir, 04372 (28.vii.2016) Mawranglang, South West Khasi Hills	E	Rngisawlia, Nongstoin	Indo-Burma
<i>Justicia assamica</i> C.B.Clarke*	Acanthaceae	Sh	Specimen not seen	NE	Khasi hills (locality not specified)	Meghalaya
<i>Phlogacanthus guttatus</i> Nees	Acanthaceae	Sh	ASSAM, A.H. Mir, 00626 (09.iv.2014) Rangthaliang, East Khasi Hills	E	Balphakram, Nokrek	Northeastern India and Bhutan
<i>Phlogacanthus pubinervis</i> T.Anderson	Acanthaceae	Sh	ASSAM, D.K. Roy 129495 (08.iii.2013) Balpakram, Garo Hills	E	Pynursla, Sutnga	Eastern Himalaya and Indo-Burma
<i>Phlogacanthus tubiflorus</i> Nees	Acanthaceae	Sh	ASSAM, A.H. Mir, 90331 (22.ii.2014) Pongtung, East Khasi Hills	E	Balphakram, Dambu, Pongtung	Indo-Burma
<i>Phlogacanthus wallichii</i> C.B.Clarke*	Acanthaceae	Sh	ASSAM, U. Kanjilal 2765 (19.x.1913), Syndai, Khasi Hills	E	Syndai	Indo-Burma
<i>Pseuderanthemum indicum</i> A.M.Cowan & Cowan	Acanthaceae	Sh	ASSAM, G. Panigrahi 6059 (26.iii.1957), Shillong Peak, Khasi Hills	E	Shillong Peak	Eastern Himalaya and Indo-Burma
<i>Strobilanthes brunoniana</i> Nees	Acanthaceae	Sh	ASSAM, D.K. Roy 129495 (08.iii.2013) Balpakram, Garo Hills	E	Balphakram, Barapani, Tharia, Pongtung, Mawmluh, Mawmsai	Northeastern India
<i>Strobilanthes denticulata</i> T.Anderson*	Acanthaceae	Sh	ASSAM, G.K. Deka 19131 (06.i.1959), Mahadeo, Garo Hills	E	Balphakram, Nokrek	Northeastern India
<i>Strobilanthes discolor</i> (Nees) T.Anderson	Acanthaceae	Sh	ASSAM, A.H. Mir, 03068 (19.viii.2014) Pongtung, East Khasi Hills	E	Balphakram, Tura Peak	Eastern Himalaya and Indo-Burma
<i>Strobilanthes hamiltoniana</i> (Steud.) Bosser & Heine	Acanthaceae	Sh	ASSAM, D.K. Roy 130079 (05.ii.2014) Balpakram, Garo Hills	E	Tura, Jarain, Balphakram	Eastern Himalaya and Indo-Burma
<i>Strobilanthes nobilis</i> C.B.Clarke	Acanthaceae	Sh	ASSAM, B. Singh, 118458 (04.ii.2009) Wagechiringre	E	Jarain, Pynursla, Wagechiringre	Indo-Burma
<i>Strobilanthes rubescens</i> T.Anderson*	Acanthaceae	Sh	ASSAM, N.P. Balakrishnan 49957 (17.xi.1969), Jarain, Jaintia Hills	E	Jarain, Jowai	Eastern Himalaya and Indo-Burma
<i>Sympagis maculata</i> (Nees) Bremek.	Acanthaceae	Sh	ASSAM, AH Mir, 01024 (05.ii.2017) Umtong, East Khasi Hills	NE	Jowai, Jarain, Cherrapunjee, Umtong.	Meghalaya
<i>Sympagis monadelpha</i> (Nees) Bremek*	Acanthaceae	Sh	ASSAM, G.K. Deka 17521 (06.xi.1938), Jowai, Jaintia Hills	E	lalong, Jowai.	Eastern Himalaya and Indo-Burma
<i>Rhinacanthus calcaratus</i> Nees*	Acanthaceae	Sh	Specimen not seen	E	Khasi hills (locality not specified)	Northeastern India
<i>Staurogyne argentea</i> Wall.*	Acanthaceae	H	K (image!), Griffith, W., #s.n., K000838873	E	Khasi Hills (locality not specified)	Northeastern India
<i>Staurogyne simonsii</i> Kuntze*	Acanthaceae	H	ASSAM, S.R.Sharma 12186 (28.viii.1935) East Khasi Hills	NE	Barapani, Pontung, Shella	Meghalaya
<i>Strobilanthes adnatus</i> C.B.Clarke*	Acanthaceae	H	ASSAM, S.R. Sharma 17580 (14.ix.1947), Cherra forest	E	Cherrapunjee	Northeastern India
<i>Strobilanthes khasyana</i> T.Anderson*	Acanthaceae	H	K (image!), K000882913, C.B. Clarke, 15226 (20.xi.1871), Khasia, Nongpuang	E	Nongpoh	Eastern Himalaya, Meghalaya
<i>Tarphochlamys affinis</i> (Griff.) Bremek.*	Acanthaceae	H	North-Eastern Hill University, K.Haridasan 9867, Khasi hills	NE	Shillong	Meghalaya
<i>Gynocardia odorata</i> R.Br.	Achariaceae	T	ASSAM, A.H. Mir, 90411 (19.xii.2015) Mawsynram, East Khasi Hills	E	Jarain, Mawsynram, Laitsohum, Balphakram, Nokrek	Eastern Himalaya and Indo-Burma
<i>Hydnocarpus kurzii</i> (King.) Warb.	Achariaceae	T	ASSAM, A.H. Mir, 90337 (19.viii.2016) Mawrapat, South West Khasi Hills	E	Jarain, Tura, Nokrek, Mawsynram, Laitsohum, Mawkasain, Balphakram	Indo-Burma
<i>Crinum amoenum</i> Ker Gawl. ex Roxb.*	Amoryllidaceae	H	ASSAM, G.Panigrahi 4233 (30.x.1956). Garampani	E	Saitbakon, Nonglynkien	Indo-Burma
<i>Cotinus kanaka</i> (R.N.De) D.Chandra*	Anacardiaceae	T	ASSAM, S.R. Sharma 20742 (01.viii.1940) Sonakurung, Khasi Hills	NE	Sona kurung.	Meghalaya
<i>Drymycarpus racemosus</i> (Roxb.) Hook.f.	Anacardiaceae	T	ASSAM, AH Mir, 00670 (11.ix.2015) Mawmsai, East Khasi Hills	E	Cherrapunjee, Mawmluh, Mawmsai, Mawsynram	Indo-Burma

Name	Family	Habit	Voucher number	Nativness	Distribution	
					Meghalaya	Worldwide
<i>Rhus khasiana</i> Hook.f.*	Anacardiaceae	T	K (image!), K000695086, JD Hooker and T. Thomson 1901 (?..vii.1850), Khasi Hill	NE	Barapani	Meghalaya
<i>Toxicodendron hookeri</i> (K.C. Sahni & Bahadur) C.Y. Wu & T.L. Ming*	Anacardiaceae	T	ASSAM, N.P. Balakrishnan (27. viii.1968) Nartiang, Jaintia Hills	E	Raliang, Nartiang	Indo-Burma
<i>Toxicodendron bimannii</i> Barbhuiya	Anacardiaceae	T	ASSAM, D.K. Roy 125634 (25. iv.2012) Balpakram, South Garo Hills	E	Balphakram National Park	Northeastern India
<i>Artabotrys caudatus</i> Wall. ex Hook.f. & Thomson*	Annonaceae	Cl	ASSAM, U.K. 4140 (09.iv.1914), Makum range, Garo Hills	NE	Balphakram, Nokrek and Rongrengiri Garo hills	Meghalaya
<i>Cyathocalyx martabanicus</i> Hook.f. & Thomson*	Annonaceae	T	ASSAM, P.C. Kanjilal 5230 (05. iii.1915), Tura Peak, Garo Hills	E	Sanitarium Garo Hills	Northeastern India
<i>Fissistigma verrucosum</i> (Hook.f. & Thomson) Merr.	Annonaceae	Cl	ASSAM, A.H. Mir, 90471 (10. viii.2016) Pynursla, East Khasi Hills	E	Ialong, Raliang, Jowai Raliang, Nokrek, Shangpung, Wakhen	Northeastern India
<i>Goniothalamus simonsii</i> Hook.f. & Thomson	Annonaceae	T	ASSAM, D.K. Roy 130164 (05. vi.2014), Balpakram, South Garo Hills	NE	Nokrek, Nongkhylliem, Borlang, Lailad, Balphakram	Meghalaya, Assam
<i>Polyalthia jenkinsii</i> (Hook.f. & Thomson) Hook.f. & Thomson	Annonaceae	T	ASSAM, A.H. Mir, 90327 (27. ix.2015) Mawkyrwat, East Khasi Hills	E	Laitkynsew, Cherrapunjee, Balphakram	Indo-Burma
<i>Polyalthia meghalayensis</i> V.Prakash & Mehrotra*	Annonaceae	Sh	K (image!), K000691478, V. Prakash, #17130 Garo Hills, Meghalaya	NE	Boldoringri forest, Tura Peak	Meghalaya
<i>Trivalvaria kanjilalii</i> D.Das*	Annonaceae	T	ASSAM, U. Kanjilal 6348 (10. xii.1915), Nongkla, Khasi Hill	NE	Syndai	Meghalaya
<i>Uvaria hamiltonii</i> Hook.f. & Thomson*	Annonaceae	Cl	ASSAM, J. Joseph 22298 (24. vi.1940), Nongpoh, Ri Bhoi	E	Balphakram, Rongrengiri, Maheshkola, Nongpoh	Indo-Burma
<i>Uvaria lurida</i> Hook. f. & Thomson*	Annonaceae	Cl	ASSAM, S.R. Sarma s.n. (16. xi.1938), Umsaw, Ri. Bhoi	NE	Balphakram, Maheshkola	Meghalaya
<i>Trachyspermum khasianum</i> (C.B. Clarke) H. Wolff.*	Apiaceae	H	K (image!), K000685640, J.D. Hooker and T. Thomson 1901 (19.viii.1850), Boge Panee, Khasi Hill	E	Jarain	Indo-Burma
<i>Bupleurum khasianum</i> (Clarke) P.K. Mukh.*	Apiaceae	H	K (image!), K000687107, C.B. Clarke, 16663, (31.x.1871), Mairang, Khasia	NE	Mairang	Meghalaya
<i>Gongronema ventricosum</i> Hook.f.*	Apocynaceae	Sh	K (image!), K000872892, s.coll. 6, India, Khasia	NE	Khasi hills (locality not specified)	Meghalaya
<i>Ilex embelioides</i> Hook.f.	Aquifoliaceae	T	ASSAM, A.H. Mir, 90384 (03. xii.2015) Saitbakon, East Khasi Hills	NE	Raliang, Jowai, Dawki, Jarain, Tyrsad, Cherrapunjee, Mawkyrwat, Pariong, Laitryngew, Mawmluh, Mawmsmai, Rngisawlia, Saitbakon	Meghalaya
<i>Ilex khasiana</i> Purkay.	Aquifoliaceae	T	ASSAM, AH Mir, 88687 (15.xi.2015) Pyndengnongbri, East Khasi Hills	NE	Shillong peak, Upper Shillong, Elephant falls, Myllem, Mawtangor, Jakrem, Pyndengnongbri	Meghalaya
<i>Ilex venulosa</i> Hook.f.	Aquifoliaceae	T	ASSAM, A.H. Mir, 88686 (12.v.2015) Cherrapunjee, East Khasi Hills	E	Jowai, Laitlyngkot, Sohrarim, Jarain, Pongtung, Shangpung, Cherrapunjee, Pynursla, Saitbakon, Wakhen, Mawkyrnot, Mawmluh, Laitryngew, Mawkyrwat, Umtong, Jakrem, Nokrek	Indo-Burma
<i>Ilex godajam</i> Colebr. ex Hook.f.	Aquifoliaceae	T	ASSAM, A.H. Mir, 90343 (20.x.2015) Lawbah Mawsynram, East Khasi Hills	E	Lawbah, Mawsynram, Balphakram	Eastern Himalaya and Indo-Burma
<i>Arisaema album</i> N.E.Br.	Araceae	H	ASSAM, D.K. Roy 130337 (26. viii.2014), Siju, South Garo Hills	E	Mawmsmai, Nokrek, Balphakram	Eastern Himalaya and Northeastern India
<i>Arisaema nepenthoides</i> (Wallich) Martius ex Schott & Endlicher	Araceae	H	ASSAM, A.H. Mir, 00591 (15. ix.2014) Pongtung, East Khasi Hills	E	Pongung, Pynursla, Saitbakon	Indo-Burma
<i>Rhaphidophora hookeri</i> Schott	Araceae	Ep	ASSAM, B. Singh, 114714 (27. ii.2007) Nokrek Peak, Garo Hills	E	Nokrek	Eastern Himalaya and Indo-Burma

Name	Family	Habit	Voucher number	Nativness	Distribution	
					Meghalaya	Worldwide
<i>Sauromatum meghalayense</i> D.K. Roy, A.D. Talukdar, B.K.Sinha & M. Dutta Choud.	Araceae	H	ASSAM, D.K.R. 130216 (05.vi.2014), Hatisia, South Garo Hills	NE	Balphakram National Park	Meghalaya
<i>Aralia thomsonii</i> Seem. ex C.B.Clarke	Araliaceae	Sh	ASSAM, A.H. Mir, 90478 (23.x.2016) Mawranglang, East Khasi Hills	E	lalong, Jowai, Wakhen, Pynndengnongbri	Eastern Himalaya and Indo-Burma
<i>Brassaiopsis hispida</i> Seem	Araliaceae	T	ASSAM, B. Singh, 118480 (09. iv.2009) Nokrek Peak, Garo HillsHills	E	lalong, Nokrek Peak	Eastern Himalaya and Indo-Burma
<i>Panax pseudoginseng</i> Wall.	Araliaceae	H	ASSAM, A.H. Mir, 00757 (05.ii.2016) Rngisawlia, South West Khasi Hills	E	Laitkor, Nongkrem, Mawphlang, Upper Shillong, Tyrsad, Nongstoin	Eastern Himalaya and Indo-Burma
<i>Tupidanthus calypratus</i> Hook. f. & Thomson	Araliaceae	Sh	ASSAM, A.H. Mir, 90335 (09.v.2014) Cherrapunjee, East Khasi Hills	E	lalong, Raliang, Jowai, Balphakram, Swer, Mawmluh, Sohra, Rngisawlia, Nokrek	Indo-Burma
<i>Brassaiopsis glomerulata</i> var. <i>rufostellata</i> (Blume) Regel.*	Araliaceae	Sh	ASSAM, J. Joseph 43783(12. iii.1966), N.R.Soil conservation, IB, Umling	E	Umling	North east India
<i>Macropanax meghalayensis</i> Harid. & R.R.Rao*	Araliaceae	Sh	North-Eastern Hill University, K. Haridasan, 10233A, B, Lailad	NE	Lailad	Meghalaya
<i>Calamus erectus</i> Roxb.	Arecaceae	Sh	ASSAM, A.H. Mir, 90423 (10. ix.2015) Pongtung, East Khasi Hills	E	Baghmara, Nokrek, Jarain, Mawshun, Cherrapunjee, Pongtung, Balphakram	Eastern Himalaya and Indo-Burma
<i>Calamus floribundus</i> Griff.*	Arecaceae	Cl	ASSAM, R.S. 113302 (06.xii.2006) Dawegiri, Garo Hills	E	Cherrapunjee, Smit, Pongtung, Shangpung, Dawegiri	Eastern Himalaya and Indo-Burma
<i>Calamus leptospadix</i> Griff.	Arecaceae	Sh	ASSAM, A.H. Mir, 00584 (15.ii.2016) Nongstoin, West Khasi Hills	E	Nokrek, Balphakram	Eastern Himalaya and Indo-Burma
<i>Calamus meghalayensis</i> A.J.Hend.*	Arecaceae	Cl	Specimen not seen	NE	Locality not known	Meghalaya
<i>Calamus tenuis</i> Roxb.	Arecaceae	Cl	ASSAM, A.H. Mir, 00637 (11. xi.2014) Mawmluh, East Khasi Hills	E	Cherrapunjee, Mawmluh, Mawsmi, Mawsynram	Indo-Burma
<i>Livistona jenkinsiana</i> Griff.	Arecaceae	T	ASSAM, A.H. Mir, 90477 (04. iii.2015) Tynnai, South West Khasi Hills	E	Swer, Kharang, Nongstoin, Tynnai, Hilland, Mawsynram, Weiloi	Indo-Burma
<i>Phoenix rupicola</i> T.Anderson	Arecaceae	Sh	ASSAM, B. Singh, 114930 (27. ii.2007) Nokrek Peak, Garo Hills	E	Nokrek Peak	Northeastern India
<i>Aristolochia saccata</i> Wall.	Aristolochiaceae	Cl	ASSAM, A.H. Mir, 90403 (13. ix.2015) Mawmluh, East Khasi Hills	E	Nokrek, Cherrapunjee	Eastern Himalaya and Indo-Burma
<i>Ceropegia angustifolia</i> Wight	Asclepiadaceae	Cl	ASSAM, A.H. Mir, 90409 (16.x.2015) Pynursla	NE	Balphakram, Garampani, Jowai, Jarain, Nokrek	Meghalaya
<i>Ceropegia arnottiana</i> Wight*	Asclepiadaceae	Cl	Specimen not seen	E	Khasi hills (locality not specified)	Meghalaya, Myanmar, Thailand
<i>Ceropegia lucida</i> Wall.	Asclepiadaceae	Cl	ASSAM, B. Singh, 114719 (27. ii.2007) Nokrek Peak, Garo Hills	E	Tharia, Nokrek Peak	Eastern Himalaya and Indo-Burma
<i>Cynanchum wallichii</i> Wight.*	Asclepiadaceae	Cl	ASSAM, SR Sarma 12128 (28. viii.1935), Pungtong, Khasi Hills	E	Dawki, Pongtung, Nongstoin	Indo-Burma
<i>Hoya lobbii</i> Hook.f.	Asclepiadaceae	Ep	ASSAM, A.H. Mir, 90451 (22.v.2015) Cherrapunjee, East Khasi Hills	NE	Nokrek, Rongrengiri, Dawki, Nongthala, Nongpoh	Meghalaya
<i>Hoya acuminata</i> (Wight) Benth. ex Hook.f.	Asclepiadaceae	Ep	ASSAM, B. Singh, 118556 (11. iv.2009) Mandalgiri, Garo Hills	E	Mawsmi, Nokrek, Cherrapunjee, Balphakram, Mandalgiri	Eastern Himalaya and Indo-Burma
<i>Ophiopogon reptans</i> Hook.f.*	Asparagaceae	H	K (image 1), K000846109, C.B.Clarke, 43087(14.ii.1886), Tura, Garo Hills	E	Tura, Garo hills, Garampani, Sonapahar	Indo-Burma
<i>Peliosanthes griffithii</i> Baker	Asparagaceae	H	ASSAM, A.H. Mir, 90470 (05.v.2015) Lynshing, East Khasi Hills	E	Cherapunjee, Mawmluh, Mawsmi, Mawrapat, Lynshing, Balphakram	Indo-Burma
<i>Tupistra nutans</i> Wall.	Asparagaceae	H	BSIS, B.K. Singh 3270 (14.x.2006) Nokrek, West Garo Hills	E	Pynursla, Sohra, Mawsmi, Nokrek	Indo-Burma
<i>Tupistra tupistroides</i> (Kunth) Dandy*	Asparagaceae	H	ASSAM, NP Balakrishna 49972 (17. xi.1969) Jarain, Jaintia Hills	E	Jarain, Nunklow, Cherrapunjee, Mawsmi	Meghalaya, Sikkim

Name	Family	Habit	Voucher number	Nativness	Distribution	
					Meghalaya	Worldwide
<i>Asplenium finlaysonianum</i> Wall. ex Hook.	Aspleniaceae	H	ASSAM, B. Singh, 118391 (03.ii.2009) Ringrey, Garo Hills	E	Baghmara, Balphakram, Siju, Nokrek, Ringrey	Eastern Himalaya and Indo-Burma
<i>Asplenium khasianum</i> Sledge*	Aspleniaceae	H	K (image !), K001092516, C.B. Clarke, Umwai	NE	Umwai	Meghalaya
<i>Inula kalapani</i> C.B.Clarke*	Asteraceae	Sh	ASSAM, G.Panigrahi 16337 (17.vi.1958), Kynshi-Markasa, West Khasi Hills	E	Kynshi, Markasa	Northeastern India
<i>Synotis jowaiensis</i> (Balak.) R.Mathur*	Asteraceae	H	ASSAM, 47400, (?), Jowai	NE	Jowai, Jarain	Meghalaya
<i>Balanophora dioica</i> R.Br. ex Royle	Balanophoraceae	P	ASSAM, A.H. Mir, 90398 (19.xi.2014) Nongstoin, West Khasi Hills	E	lalong, Raliang, Jowai, Nokrek, Cherrapunjee, Mawmluh, Lynshing, Mawkyrwat, Phud Juad, Nonglang, Shillong, Nongstoin	Eastern Himalaya and Indo-Burma
<i>Impatiens khasiana</i> Hook.f.	Balsaminaceae	H	ASSAM, A.H. Mir, 90308 (10.viii.2015) Lyngiong, East Khasi Hills	NE	lalong, Laitkyrhong, Raliang, Jowai, Swer, Tyrsad and Lyngiong	Meghalaya
<i>Impatiens porrecta</i> Wall.	Balsaminaceae	H	ASSAM, M.K.V. Rao 64126 (16.vi.1975) Balphakram, Garo Hills	NE	Jowai, Jarain, Nokrek, Cherrapunjee, Balphakram, Mawmai and Parkseh	Meghalaya
<i>Impatiens acuminata</i> Benth.	Balsaminaceae	H	ASSAM, C. Deori & S.R.Talukdar 134320 (07.vii.2016), Mawchawma, South West Khasi Hills	E	Jowai, Sokha-Nongthala	Northeastern India
<i>Impatiens laevigata</i> Wall.	Balsaminaceae	H	ASSAM, A.H. Mir, 90428 (10.x.2015) Laitryngew, East Khasi Hills	E	Nokrek, Khleihrait, Mynso, Sokha-Nongthlang, Syndai, Raliang, Mawmluh, Laitryngew, Mawkyrwat, Umsaw	Northeastern India
<i>Impatiens tripetala</i> Roxb. ex DC.	Balsaminaceae	H	ASSAM, C.Deori & S.R.Talukdar 134384, (07.vii.2016) Nongstoin, Nongkhunum river island, West Khasi Hills	E	Nongstoin, Nokrek, Dawki	Indo-Burma
<i>Impatiens jurpia</i> Buch.-Ham.	Balsaminaceae	Sh	ASSAM, DB Deb 28935 Tura Peak, Garo Hills	E	Nokrek, Balphakram	Eastern Himalaya and Northeastern India
<i>Impatiens depauperata</i> Hook.f.*	Balsaminaceae	H	K (image!), K000694748, Griffit, s.n, Khasiya	NE	Khasi hills (locality not specified)	Meghalaya
<i>Impatiens striolata</i> Hook.f.*	Balsaminaceae	H	K (image!), K000694625, J.D. Hooker & T. Thomson 2026 (05.viii.1830), Kalapanee	NE	Khasi hills (locality not specified)	Meghalaya
<i>Begonia brevicaulis</i> A.DC.*	Begoniaceae	H	K (image!), Hooker & Thomson 26, Khasia (Terya to -Cherrapunjee)	E	Khasi Hills (locality not specified)	Indo-Burma
<i>Begonia josephi</i> A.DC.	Begoniaceae	H	ASSAM, A.H. Mir, 90462 (07.viii.2016) Wakhen, East Khasi Hills	E	Wakhen, Pynursla	Eastern Himalaya and Indo-Burma
<i>Begonia hatacoa</i> Buch.-Ham. ex D.Don	Begoniaceae	H	ASSAM, C.Deori & S.R.Talukdar 134282, (07.vi.2016), Nongumiam, West Khasi Hills	E	Dawki, Jarain, Syndai, Muktapur, Cherrapunjee, Laitkynsew, Mawkyrwat, Mawphlang, Mawmluh	Eastern Himalaya and Indo-Burma
<i>Begonia thomsonii</i> A.DC.	Begoniaceae	H	ASSAM, B. Singh 115968, (12.x.2007) Nokrek Peak, Garo Hills	E	Nokrek	Eastern Himalaya and Indo-Burma
<i>Berberis wallichiana</i> DC.	Berberidaceae	Sh	ASSAM, A.H. Mir, 00601 (01.i.2014) Thangnsnieng, East Khasi Hills	E	Mawphlang, Mawkyrwat, Nonglang, Nonsynrieh, Nonglynkien, Thangnsning	Eastern Himalaya and Indo-Burma
<i>Tournefortia viridiflora</i> Wall.	Boraginaceae	Sh	ASSAM, D.K. Roy 130389 (08.xi.2014) Balpakram, South Garo Hills	E	Tura, Balphakram	Indo-Burma
<i>Cordia fragrantissima</i> Kurz.	Boraginaceae	T	ASSAM, B. Singh 110587, (04.ii.2009), Tura range, Garo Hills	E	Tura	Indo-Burma
<i>Cordia grandis</i> Roxb.*	Boraginaceae	T	ASSAM, R.N. De 20584 (25.iii.1941), Tura range, Garo Hills	E	Lailad, Baghamara, Tura range	Indo-Burma
<i>Canarium strictum</i> Roxb.*	Burseraceae	T	(image!), K000651668, G. Mann s.n. (June 1878) Nongpoh, Ri Bhoi	E	Lailad, Raliang, Umdem, Nongpoh	Indo-Burma
<i>Phanera khasiana</i> (Baker) Thoth.	Caesalpinaceae	Cl	ASSAM, B. Singh 110586 (04.ii.2009), Tura range, Garo Hills	E	Balphakram, Tura range, Umtapoh.	Indo-Burma

Name	Family	Habit	Voucher number	Nativness	Distribution	
					Meghalaya	Worldwide
<i>Adenophora khasiana</i> (Hook.f. & Thomson) Oliv. ex Collett & Hemsl.*	Campanulaceae	H	ASSAM, GK Deka 18758 (06.viii.1938), Upper Shillong, Khasi Hills	E	Lakiang, Shillong Peak	Eastern Himalaya and Indo-Burma
<i>Cyclocodon parviflorus</i> (Wall. ex A.DC.) Hook.f. & Thomson*	Campanulaceae	Sh	ASSAM, NP Balakrishnana 49853 (15.xi.1969), Jarain, Jaintia Hills	E	Dawki, Cherrapunjee, Mairang	Eastern Himalaya, Indo-Burma
<i>Capparis olacifolia</i> Hook.f. & Thomson*	Capparidaceae	Sh	ASSAM, B. Singh, 118549 (11.iv.2009), Mandalgiri, Garo Hills	E	Crinioline falls	Eastern Himalaya and Indo-Burma
<i>Viburnum colebrookeanum</i> Wall. ex DC.	Caprifoliaceae	T	ASSAM, A.H. Mir, 04144 (25.viii.2015) Mawtongor, South West Khasi Hills	E	Lailad, Pynursla, Mawsynram	Eastern Himalaya and Indo-Burma
<i>Viburnum simonsii</i> Hook.f. & Thomson	Caprifoliaceae	T	ASSAM, A.H. Mir, 90420 (19.iv.2016) Nongthamai, East Khasi Hills	E	Cherrapunjee, Mawmluh, Mawsmai, Mawsynram	Meghalaya
<i>Silene khasiana</i> Rohrb.*	Caryophyllaceae	H	K(image !), K000728810, JD Hooker & T Thomson s.n., Mawphlong, Khasi Hills	E	Khasi Hills-Mawphlang	Eastern Himalaya and Indo-Burma
<i>Celastrus hookeri</i> Prain	Celastraceae	Cl	ASSAM, A.H. Mir, 04366 (27.ii.2017) Nongstoin, West Khasi Hills	E	Cherrapunjee, Mawsynram, Nongstoin	Indo-Burma
<i>Euonymus attenuatus</i> Wall.	Celastraceae	T	ASSAM, A.H. Mir, 90422 (10.xi.2015) Cherrapunjee, East Khasi Hills	E	Pongtung, Cherapunjee, Mawsynram, Jakrem, Mawsmai and Nongstoin, Balphakram	Bangladesh and Northeastern India
<i>Euonymus lawsonii</i> C.B.Clarke ex Prain	Celastraceae	T	ASSAM, A.H. Mir, 90377 (19.xi.2015) Mawmluh, East Khasi Hills	E	Shillong, Raliang, Nokrek, Jarain, Mawsynram, Cherrapunjee, Pomshomen, Mawmluh	Indo-Burma
<i>Maytenus simonsii</i> D.C.S.Raju	Celastraceae	Sh	ASSAM, B. Singh, 110589 (08.viii.2007), Chokpot, Garo Hills	NE	Chokpot	Meghalaya
<i>Salacia khasiana</i> Purkayastha	Celastraceae	Cl	ASSAM, D.K. Roy 130138 (05.vi.2014) Balpakram, South Garo Hills	E	Balpakram, Umsaw	Northeastern India
<i>Salacia roxburghii</i> Wall.	Celastraceae	Cl	ASSAM, A.H. Mir, 03108 (22.viii.2016) Swer, East Khasi Hills.	E	Cherrapunjee, Mawkyrwat, Mawsynram, Swer	Indo-Burma
<i>Garcinia elliptica</i> Wall. ex Wight	Clusiaceae	T	ASSAM, D.K. Roy 130263 (09.vi.2014) Balpakram, South Garo Hills	E	Mawsmai, Cherrapunjee, Balpakram	Indo-Burma.
<i>Garcinia anomala</i> Planch. & Triana	Clusiaceae	T	ASSAM, A.H. Mir, 03048 (17.i.2014) Laitryngew, East Khasi Hills	E	Cherrapunjee, Sohrarim, Mawsmai, Balphakram	Indo-Burma.
<i>Garcinia pedunculata</i> Roxb. ex Buch.-Ham.	Clusiaceae	T	ASSAM, D.K. Roy 130387 (08.xi.2014) Balpakram, South Garo Hills	E	Sohkha, Balphakram	Indo-Burma.
<i>Mesua floribunda</i> (Wall.) Kosterm.*	Clusiaceae	T	ASSAM, R.N. De 8440 (08.viii.1930) Rongrengiri, Garo Hills	E	Nokrek, Baghmara	Indo-Burma.
<i>Combretum wallichii</i> var. <i>flagrocarpum</i> (C.B.Clarke) M.G.Gangop. & Chakrab.	Combretaceae	Sh	ASSAM, B. Singh 115881 (08.x.2007), Rongsinggi, Garo Hills	E	Tura, Nokrek, Rongsinggi	Indo-Burma.
<i>Combretum pilosum</i> Roxb. ex G.Don	Combretaceae	Sh	ASSAM, D.K. Roy 130122 (04.vi.2014) Balpakram, South Garo Hills	E	Narpuh, Balphakram	Indo-Burma.
<i>Pollia pentasperma</i> C.B.Clarke*	Commelinaceae	H	K (image!), K000854045, C.B.Clarke 17624, Shillong, East Khasi Hills	E	Shillong Peak	Northeastern India
<i>Argyrea splendens</i> (Hornem.) Sweet*	Convolvulaceae	Cl	ASSAM, J. Joseph 45156 (16.iii.1966), Nongpoh, Ri-Bhoi District	E	Garampani, Nongpoh	Indo-Burma
<i>Erycibe peguensis</i> Prain*	Convolvulaceae	T	ASSAM, S.R. Sarma 10610 (06.xi.1933), Mawsmai, Khasi Hills	E	Nokrek, Tura	Northeastern India
<i>Carex repanda</i> C.B.Clarke*	Cyperaceae	H	K (image!), K000998912, JD Hooker & T. Thomson s.n. (15.vi.1850) Cherrapunjee, Khasi Hills	NE	Cherrapunjee	Meghalaya
<i>Dipteris wallichii</i> (R.Br.) T.Moore	Dipteridaceae	H	ASSAM, D.K. Roy 129532 (09.iii.2013) Balpakram, South Garo Hills.	E	Raliang, Jarain, Amlarem, Balphakram	Eastern Himalaya and Indo-Burma
<i>Diospyros lanceifolia</i> Roxb.	Ebenaceae	T	ASSAM, B. Singh, 114986 (07.x.2007), Dopgre, Garo Hills	E	Lailad, Siju, Dopgre	Indo-Burma
<i>Diospyros pilosiuscula</i> G.Don	Ebenaceae	T	ASSAM, D.K. Roy 129735 (01.ii.2014) Balpakram, South Garo Hills	E	Dawki, Balphakram	Indo-Burma

Name	Family	Habit	Voucher number	Nativness	Distribution	
					Meghalaya	Worldwide
<i>Diospyros stricta</i> Roxb.*	Ebenaceae	T	ASSAM, S.R. Sarma 17974 (05.xi.1938), Pungtong, Khasi Hills	E	Devbandh (Balphakram)	Bangladesh and Northeastern India
<i>Diospyros variegata</i> Kurz*	Ebenaceae	T	ASSAM, M.K.V. Rao 52504 (10.iv.1974) Tura Peak, West Garo Hills	E	Tura, Balphakram	Indo-Burma
<i>Elaeagnus pyriformis</i> Hook.f.	Elaeagnaceae	Sh	ASSAM, B. Singh, 114933 (27.ii.2007), Dopgre, Garo Hills	E	Shillong Peak, Pynursla, Balphakram	Eastern Himalaya and Indo-Burma
<i>Echinocarpus dasycarpus</i> Benth.	Elaeocarpaceae	T	ASSAM, A.H. Mir, 03059 (18.xi.2015) Nongstoin, West Khasi Hills	E	Nokrek, Pynursla, Mawsmi, Swakpoh-Wanniang, Mawsynram, Nongstoin	Eastern Himalaya and Indo-Burma
<i>Elaeocarpus acuminatus</i> Wall. ex Mast.	Elaeocarpaceae	T	ASSAM, AH Mir, 90442 (20.vi.2015) Mawsmi, East Khasi Hills	E	Mawsmi, Nokrek, Cherrapunjee, Mawmluh	Bangladesh and Northeastern India
<i>Elaeocarpus rugosus</i> Roxb. ex G.Don	Elaeocarpaceae	T	ASSAM, AH Mir, 88693 (01.ii.2014) Saitbakon, East Khasi Hills	E	Jarain, Nongtalang, Pongtung, Lailad, Mawsynram	Indo-Burma
<i>Elaeocarpus lanceifolius</i> Roxb.	Elaeocarpaceae	T	ASSAM, AH Mir, 04131 (22.xii.2015) Cherrapunjee, East Khasi Hills	E	Cherrapunjee, Mawsynram, Mawmluh, Lyngiong, Lynshing, Tyrsad, Nongbri, Mawkyrwat, Nongstoin, Jowai, Jarain, Nongpoh, Dawki, Balat	Eastern Himalaya and Northeastern India
<i>Elaeocarpus prunifolius</i> Wall. ex Müll.Berol.	Elaeocarpaceae	T	ASSAM, A.H. Mir, 90304 (20.v.2015) Mawsmi, East Khasi Hills	E	Jarain, Sweet falls, Mawsmi, Cherrapunjee, Mahadeo, Mawmluh, Pongtung, Pynursla, Sutnga, Pydengnongbri, Mawsynram	Northeastern India
<i>Elaeocarpus sikkimensis</i> Mast.	Elaeocarpaceae	T	ASSAM, G. Panigrahi 16563 (21.vi.1958) Nongstoin, Khasi Hills	E	Dawki, Nongstoin, Nongsteng	Eastern Himalaya and Northeastern India
<i>Elaeocarpus simplex</i> Kurz	Elaeocarpaceae	T	ASSAM, A.H. Mir, 90379 (15.vi.2015) Nongstoin, West Khasi Hills	E	Nongstoin	Indo-Burma
<i>Echinocarpus tomentosus</i> Benth.	Elaeocarpaceae	T	ASSAM, A.H.Mir, 88694 (08.viii.2018) Mawnai, West Khasi Hills	E	Mawnai, Mawkyrwat, Raliang	Indo-Burma
<i>Agapetes acuminata</i> (Wall.) D.Don ex G.Don	Ericaceae	Sh	ASSAM, B. Singh, 114708B (27.ii.2007) Nokrek Peak, Garo Hills.	E	Mawsmi, Nokrek	Indo-Burma
<i>Agapetes incurvata</i> (Griff.) Sleumer	Ericaceae	Sh	ASSAM, A.H. Mir, 90400 (10.iv.2015) Lynshing, East Khasi Hills	E	Mawphlang, Shillong peak, Lynshing, Umtong	Eastern Himalaya and Indo-Burma
<i>Agapetes lobbii</i> C.B.Clarke	Ericaceae	Ep	ASSAM, B. Singh, 114708 (27.ii.2007) Nokrek Peak, Garo Hills	E	Railang, Jarain, Nokrek	Indo-Burma
<i>Agapetes obovata</i> (Wight) Benth. & Hook.f.	Ericaceae	Ep	ASSAM, A.H. Mir, 00713 (12.xii.2015) Lynshing, East Khasi Hills	E	Mawsmi, Cherrapunjee, Mawsynram, Lynshing, Lyngiong, Nokrek, Pynursla, Saitbakon, Pongtung, Nongstoin	Indo-Burma
<i>Agapetes rugosus</i> (Hook.f.) Harid. & R.R.Rao	Ericaceae	Ep	ASSAM, A.H. Mir, 90455 (08.vi.2014) Pongtung, East Khasi Hills	NE	Shillong Peak, Mawmluh, Cherrapunjee, Lynshing, Mawsynram, Pynursla	Meghalaya
<i>Agapetes saligna</i> (Hook.f.) Benth. & Hook.f.	Ericaceae	Ep	ASSAM, B. Singh, 114346 (27.ii.2007) Nokrek Peak, Garo Hills	E	Jarain, Nokrek	Indo-Burma
<i>Agapetes setigera</i> (Wall.) D.Don ex G.Don	Ericaceae	Sh	ASSAM, A.H. Mir 01021 (02.ii.2017) Dympep, East Khasi Hills	E	Upper Shillong, Cherrapunjee, Mawkyrnrew, Mawsynram	Indo-Burma
<i>Craibiodendron henryi</i> W.W. Sm.*	Ericaceae	T	E, Royal Botanic Garden Edinburgh, W.W. Smith 158 (??.1884), Jowai	E	Jowai.	Indo-Burma
<i>Rhododendron formosum</i> Wall.	Ericaceae	Sh	ASSAM, A.H. Mir, 90397 (23.xi.2015) Umlangmar, East Khasi Hills	NE	Jakrem, Elephant falls, Mairang, Umsaw, Jowai, Jarain, Shillong Peak, Swer, Tyrsad, Mawranglang	Meghalaya
<i>Rhododendron inequale</i> Hutch.	Ericaceae	Ep	ASSAM, D.K. Roy 129735 (01.ii.2014) Balpakram, South Garo Hills	E	Myrung, Kyllang, Pynursla, Umsong, Mawpplong, Dympep, Wah-Soh-Pho, Mawsmi, Riat Laban, Laitlyngkot	Northeastern India

Name	Family	Habit	Voucher number	Nativness	Distribution	
					Meghalaya	Worldwide
<i>Rhododendron iteophyllum</i> Hutch.*	Ericaceae	Sh	ASSAM, A.A. Mao & D.K. Roy 110464 (21.iv.2015) Woodland Campus, Khasi Hills	NE	Myntang valley, Sohrarim, Mahadew, Jakrem, Umphang	Meghalaya
<i>Vaccinium dunalianum</i> Wight*	Ericaceae	Sh	K (image!), K000618561, J.D. Hooker s.n. Cherapunjee, Khasi Hills	E	Jowai, Mawsynram, Cherrapunjee	Eastern Himalaya and Indo-Burma
<i>Vaccinium griffithianum</i> Wight*	Ericaceae	Sh	K (image!), K000780703, J.D. Hooker & T. Thomson 1405 Khasi Hills	NE	Nongstoin	Meghalaya
<i>Vaccinium vacciniaceum</i> (Roxb.) Sleumer	Ericaceae	Sh	ASSAM, A.H. Mir, 90439 (02.xi.2015) Mawmai, East Khasi Hills	E	Mawmai, Cherrapunjee.	Eastern Himalaya and Indo-Burma
<i>Eriocaulon gregatum</i> Körn.*	Eriocaulaceae	H	K (image!), K000457742, J.D. Hooker & T Thomson s.n. Khasi Hills	E	Sohra, Rongrengiri	Northeastern India
<i>Eriocaulon barba-caprae</i> Fyson*	Eriocaulaceae	H	Specimen not seen	NE	Locality not known	Meghalaya
<i>Eriocaulon cherrapunjianum</i> R.Ansari & N.P.Balacr.*	Eriocaulaceae	H	Specimen not seen	NE	Locality not known	Meghalaya
<i>Erythroxyllum kunthianum</i> Kurz	Erythroxyllaceae	T	ASSAM, A.H. Mir, 90410 (07.ix.2015) Pynursla, East Khasi Hills	E	Pynursla, Nongstoin, Rangthalliang, Tyrsad, Ureksew, Cherrapunjee, Mawmluh, Mawsmi, Lynshing, Lyngiong, Laikynsew, Nonglang, Mawthynrew, Mairang, Nongbri	Indo-Burma
<i>Baliospermum calycinum</i> Muell.Arg	Euphorbiaceae	Sh	ASSAM, A.H. Mir, 00614 (08.i.2014) Cherrapunjee, East Khasi Hills	E	Tura, Cherrapunjee, Balphakram	Eastern Himalaya and Indo-Burma
<i>Baliospermum calycinum</i> var. <i>micranthum</i> (Müll.Arg.) Chakrab. & N.P.Balacr.	Euphorbiaceae	Sh	ASSAM, B. Singh, 115949 (11.x.2007) Daribogre, Garo Hills	NE	Nokrek, Mawmai, Cherrapunjee, Mawphlang, Mawkyrwat, Jowai, Jarain, Dawki, Umsaw, Umiam, Daribogre	Meghalaya
<i>Bridelia assamica</i> Hook.f.	Euphorbiaceae	T	ASSAM, D.K. Roy 130871 (11.xi.2014) Deobandh-Teptepa, Garo Hills	E	Balpakram, Nokrek.	Northeastern India and Bangladesh.
<i>Cleistanthus nokrensis</i> B.Singh	Euphorbiaceae	Sh	ASSAM, B. Singh, 115856 (08.x.2010), Rongsigiri, Garo Hills	NE	Nokrek Biosphere Reserve.	Meghalaya.
<i>Croton joufra</i> Roxb.	Euphorbiaceae	T	ASSAM, A.H. Mir, 00661 (10.v.2015) Lawbah, East Khasi Hills	E	Maheshkola, Cherrapunjee	Indo-Burma
<i>Glochidion acuminatum</i> Müll. Arg.	Euphorbiaceae	T	ASSAM, A.H. Mir, 90354 (23.iii.2015) Sohra, East Khasi Hills	E	Nokrek, Pyndengnongbri, Mawmluh, Mawsynram, Lynshing	Eastern Himalaya and Indo-Burma
<i>Glochidion ellipticum</i> Wight	Euphorbiaceae	T	ASSAM, B.Singh 116647 (16.x.2007) Dilching river, Garo Hills	E	Nokrek, Darugiri, Balphakram	Eastern Himalaya and Indo-Burma
<i>Glochidion multiloculare</i> (Rottler ex Willd.) Voigt*	Euphorbiaceae	T	ASSAM, M.K.V. Rao 64103 (14.ix.1975) Nokrek, Garo Hills	E	Nokrek, Mawsynram, Balpakram	Eastern Himalaya and Indo-Burma
<i>Glochidion thomsonii</i> (Muell. Arg.) Hook.f.	Euphorbiaceae	T	ASSAM, A.H. Mir, 90429 (10.x.2015) Khrang, East Khasi Hills	E	Jowai, Syndai, Nokrek, Cherapunjee, Mawsmi, Mawmluh, Nonglang, Mawkyrwat, Raliang, Jarain, Balphakram	Eastern Himalaya and Indo-Burma
<i>Mallotus roxburghianus</i> Müll. Arg.	Euphorbiaceae	T	ASSAM, A.H. Mir, 03071 (19.viii.2015) Wakhen, East Khasi Hills	E	Tura, Balphakram	Eastern Himalaya and Indo-Burma
<i>Trigonostemon semperflorens</i> (Roxb.) Muell.Arg.	Euphorbiaceae	Sh	ASSAM, D.K. Roy 125566 (26.iv.2012) Balpakram, Garo Hills	E	Nokrek, Balphakram	Bangladesh and Northeastern India
<i>Trigonostemon viridissimus</i> var. <i>chatterjii</i> (Deb & G.K. Deka) N.P. Balacr. & Chakrab.	Euphorbiaceae	T	ASSAM, D.K. Roy 129632 (11.iii.2013) Balpakram, Garo Hills	NE	Dawki, Balphakram National Park	Meghalaya
<i>Crotalaria khasiana</i> Thoth. & A.A.Ansari	Fabaceae	H	ASSAM, A.H. Mir, 03095 (22.v.2014) Mawmluh, East Khasi Hills	E	Mawmluh, Cherrapunjee, Mawsmi, Mawsynram	Indo-Burma
<i>Dalbergia rimosa</i> Roxb.	Fabaceae	T	ASSAM, B. Singh, 118575 (13.iv.2009), Mandalgiri Garo Hills	E	Balphakram, Dambu, Baghmara, Dawki, Umsaw, Pungtung, Tharia, Nongpoh, Sohra, Mandalgiri	Eastern Himalaya and Indo-Burma

Name	Family	Habit	Voucher number	Nativness	Distribution	
					Meghalaya	Worldwide
<i>Gymnocladus assamicus</i> U.N.Kanjilal ex P.C.Kanjilal*	Fabaceae	T	North Eastern Regional Institute of Science and Technology, A. Arunachalam 11839 (02.iv.2014), Shella, Khasi Hill	E	Laitkseh	Northeastern India
<i>Ormosia robusta</i> Baker	Fabaceae	T	ASSAM, A.H. Mir, 00590 (15.ix.2014) Lyngiong, East Khasi Hills.	E	Balphakram, Baghmara	Eastern Himalaya and Indo-Burma
<i>Campylotropis thomsonii</i> (Baker) Schindl.*	Fabaceae	Sh	K (image!), K000894916, J.D.Hooker & T.Thomson, s.n., Khasiya	E	Khasi hills (locality not specified)	Indo-Malaya
<i>Dalbergia clarkei</i> Thoth.*	Fabaceae	Sh	LE (image!), LE00014482, C.B. Clarke, (29.i.1886), Maoksandoam	E	Khasi hills	Eastern Himalaya, Northeastern India
<i>Dalbergia volubilis</i> Roxb var. <i>assamica</i> *	Fabaceae	Sh	ASSAM, U.N.Kanjilal (30.iii.1915), Garo hills	E	Garo hills (locality not specified)	Northeastern India
<i>Derris pseudorobusta</i> Thoth.*	Fabaceae	Sh	ASSAM, N.P. Balakrishnan 47038 (24.viii.1968), Garam Pani-Rytiang Road	E	Garampani	Eastern Himalaya, North east India
<i>Indigofera sesquipedalis</i> Sanjappa*	Fabaceae	Sh	ASSAM, D. Verma 134145 (28.vi.14), Mukhaialong, Meghalaya	E	Mukhaialong near jowai	Eastern Himalaya, Northeastern India
<i>Lespedeza elliptica</i> Benth.*	Fabaceae	Sh	ASSAM, G. Panigrahi 3756 (26.ix.56), Elephant falls, 7th miles from Shillong	E	Elephant falls	Eastern Himalaya, North east India
<i>Corydalis khasiana</i> Liden*	Fumariaceae	H	K (image!), K000653652, Magnus Liden, Khasi Hills	NE	Khasi Hills (locality not specified)	Meghalaya
<i>Crawfordia campanulacea</i> Wall. & Griff. ex C.B.Clarke*	Gentianaceae	H	K (image!), K000195242, J.D.Hooker, s.n. India, Khasia (Mawflong)	E	Mawphlang	Himalaya, North east India
<i>Aeschynanthus mannii</i> Kurz ex C.B.Clarke	Gesneriaceae	Ep	ASSAM, B. Singh, 114710 (27.ii.2007), Nokrek peak, Garo Hills	NE	Jowai, Balphakram, Nokrek	Meghalaya.
<i>Aeschynanthus parasiticus</i> (Roxb.) Wall.	Gesneriaceae	Ep	ASSAM, B. Singh, 116864 (29.iii.2008), Nabokgre, Garo Hills	E	Jarain, Jowai, Raliang, lalong, Cherrapunjee, Mawsmi, Mawsynram, Nokrek, Nabokgre	Eastern Himalaya and Indo-Burma
<i>Aeschynanthus superbus</i> C.B.Clarke	Gesneriaceae	Ep	ASSAM, A.H. Mir, 90393 (13.ix.2016) Rangtheliang, East Khasi Hills	E	Raliang, Jarain, Jowai, Nartiang, Nokrek, Mawsynram, Rangthaliang, Cherrapunjee,	Eastern Himalaya and Indo-Burma
<i>Aeschynanthus parviflorus</i> (D.Don) Spreng.	Gesneriaceae	Ep	ASSAM, B. Singh, 115860 (07.x.2007), Rongsingiri, Garo Hills	E	lalong, Raliang, Mawsmi, Mawmluh, Cherapunjee, Lynshing, Jowai, Nokrek, Shillong peak, Rongsingiri	Eastern Himalaya and Indo-Burma
<i>Aeschynanthus hookeri</i> C.B.Clarke	Gesneriaceae	Ep	ASSAM, A.H. Mir, 90464 (10.viii.2016) Wakhen, East Khasi Hills	E	South Garo hills, Wakhen, Balphakram	Eastern Himalaya and Indo-Burma.
<i>Boeica filiformis</i> C.B.Clarke*	Gesneriaceae	Sh	ASSAM, M.K.V. Rao 64551 (17.vii.1976), Baghmara, Garo Hills	E	Nokrek	Northeastern India.
<i>Sycopsis griffithiana</i> Oliv.*	Hamamelidaceae	T	ASSAM, S.R. Sarma 103299 (23.xi.1935) Mawsmi, Khasi Hills	NE	Tharia forest, Cherrapunjee, Mawsmi, Lan-Nong-Kah, Mahadeo forest	Meghalaya.
<i>Molineria garoense</i> D.K. Roy & D.Vijayan	Hypoxidaceae	H	ASSAM, D.K.Roy 129632 (06.vi.2014) Balpakram, Garo Hills	NE	Balpakram	Meghalaya.
<i>Ixonanthes khasiana</i> Hook.f.	Ixonanthaceae	T	ASSAM, A.H. Mir, 05653 (11.x.2016) Pongtung, East Khasi Hills	NE	Syrengam, Nongtalang, Dawki, Nongsteng, Cherrapunjee, Mawsynram	Meghalaya and Arunachal Pradesh.
<i>Callicarpa vestita</i> Wall. ex C.B.Clarke	Lamiaceae	T	ASSAM, A.H. Mir, 90457 (17.vii.2015) Pongtung, East Khasi Hills	E	Raliang, Pongtung	Northeastern India and Eastern Himalaya.
<i>Gomphostemma lucidum</i> wall ex Benth.	Lamiaceae	Sh	ASSAM, A.H. Mir, 90460 (21.ix.2015) Mawmluh, East Khasi Hills	E	Jowai, Jarain, Cherrapunjee, Mawmluh, Nongthmai	Indo-Burma.
<i>Pogostemon strigosus</i> (Benth.) Benth.	Lamiaceae	Sh	ASSAM, A.H. Mir, 90328 (08.vii.2015) Lyngshing, East Khasi Hills	NE	lalong, Jowai, Jarain, Ummulong, Lawbah, Mawsmi, Pomshomen, Mawmluh, Mawsynram	Meghalaya.
<i>Premna bracteata</i> Wall. ex C.B.Clarke	Lamiaceae	T	ASSAM, B. Singh 114965 (20.vi.2007), Bandari fall, Garo Hills	E	Tura Peak	Eastern Himalaya and Indo-Burma.

Name	Family	Habit	Voucher number	Nativness	Distribution	
					Meghalaya	Worldwide
<i>Premna milleflora</i> C.B.Clarke*	Lamiaceae	T	ASSAM, U. Kanjilal 5249 (06.iii.1915) Tura Forests, Garo Hills	E	Songsak, Tura Peak	Indo-Burma.
<i>Premna racemosa</i> Wall. ex Schauer	Lamiaceae	T	ASSAM, A.H. Mir, 00615 (09.i.2014) Laitryngew, East Khasi Hills	E	Pynsula, Tura	Indo-Burma.
<i>Alseodaphne khasyana</i> (Meisn.) Kosterm.	Lauraceae	T	ASSAM, A.H. Mir, 90378 (21.x.2015) Nongstoin, West Khasi Hills	NE	Pynursla, Mawkyrwat, Cherrapunjee, Mawmluh, Laitkynew, Lawba, Nongstoin	Meghalaya.
<i>Actinodaphne reticulata</i> Meisn.*	Lauraceae	T	K (image!), K000778977, J.D. Hooker & T. Thomson, s.n (?..x.1820) Khasia, Nongkhaw	E	Nongkhaw	Eastern Himalaya, Meghalaya
<i>Alseodaphne petiolaris</i> Hook.f.	Lauraceae	T	ASSAM, U.N. Kanjilal 4051 (06.vi.1914), 37 half mile post, G.S.Road, Shillong	E	Khasi hills (locality not specified)	Indo-Burma
<i>Beilschmiedia fagifolia</i> Nees*	Lauraceae	T	ASSAM, U. Kanjilal 5251 (07.iii.1915) Tura Peak, Garo Hills	E	Tura Peak	Eastern Himalaya and Indo-Burma.
<i>Beilschmiedia assamica</i> Meisn.	Lauraceae	T	ASSAM, A.H. Mir, 90408 (21.ii.2016) Mawsmi, East Khasi Hills	E	Nokrek, Pynursla, Cherrapunjee, Mawkyrwat, Nongstoin, Mawsmi, Mawmluh	Indo-Burma.
<i>Beilschmiedia brandisii</i> Hook.f.	Lauraceae	T	ASSAM, A.H. Mir, 01013 (09.xi.2016) Nongstoin, West Khasi Hills	E	Tura peak, Nongkrem, Nokrek	Northeastern India.
<i>Beilschmiedia gammieana</i> King ex Hook.f.	Lauraceae	T	ASSAM, U.N. Kanjilal 7105 (29.xi.1916), Upper Shillong.	E	Upper Shillong	Eastern Himalaya
<i>Cinnamomum bishnupadae</i> M.Gangop.*	Lauraceae	T	Specimen not seen	E	Locality not known	Northeastern India (Meghalaya)
<i>Cinnamomum curvifolium</i> (Lam.) Nees	Lauraceae	T	ASSAM, D.K. Roy 130065 (05.ii.2014) Balpakram, Garo Hills	E	Raliang, Jowai, Soharim, Mawmluh, Cherrapunjee, Lyngiong, Lynshing, Mawkyrwat, Mawsynram, Umsaw, Balphakram, Jarain, Nartiang, Dawki, Bhoirymbong, Nongpoh, Nongstoin	Indo-Burma
<i>Cinnamomum suvrae</i> M.Gangop.*	Lauraceae	T	Specimen not seen	E	Locality not known	North east India (Meghalaya)
<i>Cryptocarya amygdalina</i> Nees	Lauraceae	T	ASSAM, A.H. Mir, 00677 (09.x.2015) Laitsohum, East Khasi Hills	E	Nokrek, Balphakram	Indo-Burma and Nepal
<i>Lindera latifolia</i> Hook.f.	Lauraceae	T	ASSAM, AH Mir, 90365 (22.ix.2015) Mawkyrwat, South West Khasi Hills	E	Nokrek, lalong, Raliang, Jowai, Amlarem, Nonglang, Cherrapunjee, Mawmluh, Phudjuad, Nongstoing, Lyngiong	Indo-Burma
<i>Litsea laeta</i> (Wall. ex Nees) Hook.f.	Lauraceae	T	ASSAM, A.H. Mir, 90447 (21.viii.2015) Cherrapunjee, East Khasi Hills	E	Cherrapunjee, Mawsmi, Mawmluh, Laitryngew, Mawsynram, Nongstoin, Jakrem, Shangpung, Wakhen, Lawbah, Nongstoin, Nongpoh, Nokrek, Balphakram, Mawkasain, Laitsohum	Indo-Burma and Bhutan
<i>Machilus gamblei</i> King ex Hook.f.	Lauraceae	T	ASSAM, B. Singh118504 (12.iv.2009), Nokrek Peak, Garo Hills	E	Darugiri, Cherapunjee, Lyngiong, Nongkrem, Smit, Mawkyrwat. Lailad, Mawmluh, Mawsmi, Mawsynram, Balphakram, Nokrek	Eastern Himalaya and Indo-Burma
<i>Neolitsea umbrosa</i> (Nees) Gamble	Lauraceae	T	ASSAM, A.H. Mir, 00583 (15.i.2016) Cherrapunjee, East Khasi Hills.	E	Lailad, Dympep, Pynursla, Cherrapunjee, Satifalls, Balpakram	Himalaya, Indo-Burma
<i>Persea kingii</i> (Hook.f.) Kosterm.	Lauraceae	T	ASSAM, A.H. Mir, 00652 (07.v.2015) Swer, East Khasi Hills.	NE	Shillong peak, Cherrapunjee, Mawmluh, Mawsmi, Mawkyrwat, Nokrek, Nongstoin	Meghalaya
<i>Persea minutiflora</i> Kosterm.	Lauraceae	T	ASSAM, A.H. Mir, 00638 (12.xi.2014) Pongtung, East Khasi Hills	E	Nokrek	Indo-Burma

Name	Family	Habit	Voucher number	Nativness	Distribution	
					Meghalaya	Worldwide
<i>Persea parviflora</i> (Meisn.) Harid. & R.R.Rao	Lauraceae	T	ASSAM, A.H. Mir, 05646 (22.i.2016) Laitsohum, East Khasi Hills	NE	Tura, Ialong, Raliang, Jowai, Nongstoin	Meghalaya
<i>Phoebe attenuata</i> (Nees) Nees	Lauraceae	T	ASSAM, A.H. Mir, 00662 (10.v.2015) Lawbah, East Khasi Hills	E	Tura	Eastern Himalaya and Meghalaya
<i>Phoebe cooperiana</i> P.C.Kanjilal & Das	Lauraceae	T	ASSAM, B.S. 118408 (02.ii.2009), Doparakgre, Garo Hills	E	Nongpoh, Nokrek	Northeastern India
<i>Lindera assamica</i> (Meisn.) Kurz	Lauraceae	T	ASSAM, R.N. De 17565 (11.xi.1938), Mawmsai forest	E	Cherrapunjee, Mawmsai	Eastern Himalaya, Indo-Burma
<i>Loranthus gracilifolius</i> Roxb. ex Schult. & Schult.f.	Loranthaceae	Ep	ASSAM, R.N. De 19967 (10.xii.1940), Damra forests, Garo Hills	E	Balphakram, Damra	Eastern Himalaya and Indo-Burma
<i>Taxillus assamicus</i> Danser	Loranthaceae	P	ASSAM, AH Mir, 90323 (13.ix.2015) Cherrapunjee, East Khasi Hills	E	Cherrapunjee, Mawmluh, Damalgiri	Indo-Burma
<i>Macrosolen psilanthus</i> (Hook.f.) Danser*	Loranthaceae	Sh	ASSAM, RN De 19967 (28.iii.1941), Damra forests, Garo Hills	E	Jarain, Damra	Northeastern India and Bhutan
<i>Magnolia baillonii</i> Pierre	Magnoliaceae	T	ASSAM, A.H. Mir, 00756 (02.ii.2016) Nongsteng, East Khasi Hills	E	Umsaw, Nongsteng, Nokrek, Nartiang	Eastern Himalaya and Indo-Burma
<i>Magnolia griffithii</i> Hook.f. & Thomson*	Magnoliaceae	T	ASSAM, D.B. Deb 28900 (29.viii.1962), Tura Forests, Garo Hills	E	Nongpoh, Nokrek	Indo-Burma.
<i>Magnolia insignis</i> Wall.	Magnoliaceae	T	ASSAM, A.H. Mir, 90415 (12.v.2015) Cherrapunjee, East Khasi Hills	E	Ialong, Raliang, Shillong peak, Mawmluh, Jarain, Shangpung, Khlerihat, Nongpoh, Nonsynreih, Nonglang, Cherrapunjee, Lyngiong, Mawynram	Eastern Himalaya and Indo-Burma
<i>Magnolia oblonga</i> (Wall. ex Hook.f. & Thomson) Figlar	Magnoliaceae	T	ASSAM, AH Mir, 90313 (24.iii.2016) Swer, East Khasi Hills	E	Swer, Tura	Bangladesh and Northeastern India
<i>Magnolia punduana</i> (Hook.f. & Thomson) Figlar	Magnoliaceae	T	ASSAM, A.H. Mir, 90404 (19.ix.2015) Mawmluh, East Khasi Hills	E	Jowai, Jarain, Cherrapunjee, Mawkyrwat, Nongstoin, Pynursla, Lynshing, Nonglang	Northeastern India
<i>Magnolia rabaniana</i> (Hook.f. & Thomson) D.C.S.Raju & M.P.Nayar	Magnoliaceae	T	ASSAM, A.H. Mir, 88685 (19.iii.2015) Cherrapunjee	E	Mawmsai, Cherrapunjee, Sangriang, Nongthmmai	Northeastern India
<i>Magnolia lanuginosa</i> (Wall.) Figlar & Noot.	Magnoliaceae	T	ASSAM, A.H. Mir, 88695 (02.viii.2015) Mawnai, West Khasi Hills	E	Mawnai, Khrang, Rngisawlia, Pariong, Kynshi, Pyndengnongbri, Mawkyrwat	Indo-Burma
<i>Aspidopterys elliptica</i> (Blume) A.Juss.*	Malpighiaceae	Cl	ASSAM, R.N. De 20551 (25.iv.1941), Damra forests, Garo Hills	E	Tura, Maheshkhola, Damra	Eastern Himalaya and Indo-Burma
<i>Hiptage acuminata</i> Wall. ex A.Juss.	Malpighiaceae	Cl	ASSAM, A.H. Mir, 01015 (11.xi.2016) Nonglynkien, South West Khasi Hills	E	Nokrek, Nonglynkien	Indo-Burma
<i>Aspidopterys jainii</i> R.C.Srivast.*	Malpighiaceae	Cl	Specimen not seen	E	Locality not specified	Northeastern India (Meghalaya)
<i>Heritiera dubia</i> Wall. ex Kurz*	Malvaceae	T	Specimen not seen	E	Locality not specified	Northeastern India (Assam, Meghalaya)
<i>Memecylon cerasiforme</i> Kurz	Melastomataceae	T	ASSAM, A.H.Mir, 00595 (15.x.2016) Mawmluh, East Khasi Hills	E	Lailad, Balphakram	Indo-Burma
<i>Osbeckia capitata</i> Benth. ex Naudin	Melastomataceae	H	ASSAM, A.H. Mir, 90359 (15.vi.2015) Lyngiong, East Khasi Hills	E	Jowai, Mawlai, Pongtung, Raliang, Cherrapunjee, Nongstoin, Mairang, Nongbri, Lyngiong, Mawkyrwat, Pynursla, Wakhen, Jarrain, Lawbah, Mawphlang, Laitryngew, Phlanwangbroi	Indo-Burma
<i>Osbeckia nutans</i> Wall. ex C.B.Clarke	Melastomataceae	Sh	ASSAM, D.K. Roy 129644 (11.iii.2013) Balpakram, Garo Hills	E	Nokrek, Jowai, Balphakram.	Eastern Himalaya and Northeastern India
<i>Osbeckia nayarii</i> G.S.Giri*	Melastomataceae	H	Specimen not seen	NE	Locality not specified	Meghalaya
<i>Oxyspora senguptae</i> Subram. & Nayar*	Melastomataceae	Sh	Specimen not seen	NE	Locality not specified	Meghalaya
<i>Sonerila khasiana</i> C.B.Clarke	Melastomataceae	H	ASSAM, A.H. Mir, 03094 (22.v.2014) Cherrapunjee, East Khasi Hills	E	Ialong, Jowai, Balphakram, Cherrapunjee, Nongsynreih, Mawthnrew, Nongstoin	Himalaya, Indo-Burma

Name	Family	Habit	Voucher number	Nativness	Distribution	
					Meghalaya	Worldwide
<i>Sonerila arguta</i> R.Br.*	Melastomataceae	H	K (image!), K000867662, s.coll., Amane	NE	Locality not specified	Meghalaya
<i>Chisocheton cumingianus</i> subsp. <i>balansae</i> (C.DC.) Mabb.	Meliaceae	T	ASSAM, B. Singh, 118416 (03.ii.2009) Tamadugre, Garo Hills	E	Mahadeo, Pynursla, Pongtung, Balpakram, Nokrek, Tamadugre	Eastern Himalaya and Indo-Burma
<i>Cyclea bicristata</i> (Griff.) Diels	Menispermaceae	Cl	ASSAM, A.H. Mir, 04356 (26.iv.2015) Cherrapunjee, East Khasi Hills	E	Cherrapunjee, Mawsynram	Indo-Burma
<i>Cyclea debiliflora</i> Miers	Menispermaceae	Cl	ASSAM, B. Singh 118347 (30.i.2008) Sangkinigre, Garo Hills	NE	Nokrek, Balphakram, Sangkinigre	Meghalaya
<i>Haematocarpus thompsonii</i> Miers	Menispermaceae	Cl	ASSAM, A.H. Mir, 00619 (05.ii.2014) Mawkyrwat, South West Khasi Hills	E	Sonapahar	Northeastern India
<i>Stephania glandulifera</i> Miers*	Menispermaceae	Cl	ASSAM, s.coll., 29036 (30.viii.1962), Tura forest, Meghalaya	E	Tura peak, Nokrek	Eastern Himalaya, North east India
<i>Calliandra umbrosa</i> subsp. <i>griffithii</i> (Benth.) S.R.Paul	Mimosaceae	Sh	ASSAM, A.H. Mir, 03082 (21.xii.2016) Ureksew, East Khasi Hills	NE	Umtapoh, Mawsmi, Balphakram	Meghalaya
<i>Artocarpus chama</i> Buch.-Ham.	Moraceae	T	ASSAM, B. Singh 115741 (23.vi.2007) Oragitok, Garo Hills	E	Umling, Balphakram, Nokrek, Oragitok	Bangladesh and Indo-Burma
<i>Ficus squamosa</i> Roxb.	Moraceae	Sh	ASSAM, B. Singh 118245 (01.ii.2008) Rongrengiri, Garo Hills	E	Umling-Lailad, Rongrengiri	Eastern Himalaya and Indo-Burma
<i>Musa velutina</i> H.Wendl. & Drude	Musaceae	T	ASSAM, B. Singh n. (26.ii.2007) Chandigre, Garo Hills	E	Nokrek, Chandigre	Eastern Himalaya and Indo-Burma
<i>Horsfieldia amygdalina</i> (Wall.) Warb.	Myristicaceae	T	ASSAM, U. Kanjilal 23959 (28.iii.1915) Dambu, Garo Hills	E	Laitkynsew, Dambu, Nongpoh	Eastern Himalaya and Indo-Burma
<i>Antistrophe oxantha</i> (Wall. ex A.DC.) A.DC.	Myrsinaceae	T	ASSAM, B. Singh 114670 (27.ii.2007) Nokrek Peak, Garo Hills	E	Nokrek Peak, Balphakram	Northeastern India and Bangladesh
<i>Ardisia depressa</i> C.B.Clarke	Myrsinaceae	Sh	ASSAM, B. Singh 115852 (07.x.2008) Rongsingiri, Garo Hills	E	Umsaw, Nongpoh, Nokrek, Rongsingiri	Eastern Himalaya and Indo-Burma
<i>Ardisia griffithii</i> C.B.Clarke	Myrsinaceae	Sh	ASSAM, A.H. Mir, 90394 (28.x.2016) Laitryngew, East Khasi Hills.	NE	lalong, Raliang, Jowai, Mawlai, Nokrek, Cherrapunjee, Mawkyrwat	Meghalaya
<i>Ardisia nerifolia</i> Wall. ex A.DC.	Myrsinaceae	Sh	ASSAM, A.H. Mir, 00676 (08.x.2015) Khrang, East Khasi Hills.	E	Mawlai, Jarain, Balpakram	Eastern Himalaya and Indo-Burma
<i>Ardisia odontophylla</i> Wall. ex A.DC.	Myrsinaceae	Sh	ASSAM, B. Singh 118477 (09.iv.2009) Nokrek Peak, Garo Hills	E	Pynursla, Jowai, Mawsynram, Nokrek	Indo-Burma
<i>Ardisia pedunculosa</i> Wall.*	Myrsinaceae	Sh	ASSAM, G. Panigrahi 22605 (15.xii.1960) Rongrengiri, Garo Hills	NE	Raliang, Garo Hills	Meghalaya
<i>Embelia subcoriacea</i> (C.B.Clarke) Mez	Myrsinaceae	Sh	ASSAM, A.H. Mir, 90459 (24.x.2016) Mawmluh, East Khasi Hills	E	Mawmluh, Cherrapunjee, Jowai, Weilo, Mawsynram, Jarain	Indo-Burma
<i>Embelia tsjeriam-cottam</i> (Roem. & Schult.) A.DC.	Myrsinaceae	Sh	ASSAM, A.H. Mir, 00578 (15.vii.2015) Cherrapunjee, East Khasi Hills	E	Nongpoh	Indo-Burma
<i>Embelia vestita</i> Roxb.	Myrsinaceae	Sh	ASSAM, A.H. Mir, 00579 (15.vii.2015) Cherrapunjee, East Khasi Hills	E	Sadew, lalong, Jowai	Northeastern India
<i>Syzygium diospyrifolium</i> (Wall. ex Duthie) S.N.Mitra	Myrtaceae	T	ASSAM, A.H. Mir, 00653 (08.v.2015) Cherrapunjee, East Khasi Hills	E	Lailad, Balphakram	Bangladesh and Northeastern India
<i>Syzygium kurzii</i> (Duthie) N.P.Balakr.	Myrtaceae	T	ASSAM, B. Singh 114985 (21.vi.2007) Dopgre, Garo Hills	E	Dambu, Balphakram, Nokrek, Dopgre	Indo-Burma
<i>Syzygium praecox</i> (Roxb.) Rathakr. & N.C.Nair	Myrtaceae	T	ASSAM, B. Singh 115938 (11.x.2007), Williamnagar, Garo Hills	E	Baghmara, Williamnagar	Indo-Burma
<i>Syzygium ramosissimum</i> (Blume) N.P.Balakr.*	Myrtaceae	T	ASSAM, U. Kanjilal 5237 (05.iii.1915) Sanitorium Hills, Garo Hills	E	Baghmara, Nokrek, Sanitorium Hills.	Eastern Himalaya and Indo-Burma
<i>Syzygium khasianum</i> (Duthie) N.P.Balakr	Myrtaceae	T	ASSAM, A.H. Mir, 03046 (16.vi.2016) Mawsmi, East Khasi Hills	E	Cherrapunjee, Mawmluh, Mawsmi, Mawsynram	Nottheast India
<i>Nepenthes khasiana</i> Hook.f.	Nepenthaceae	Sh	ASSAM, A.H. Mir, 90306 (19.ix.2014) Jarain, South West Hills	NE	Balphakram, Nokrek, Sutunga, Jarain, Bapung, Maheshkhola, Bagmara, Siju, Lawbah	Meghalaya

Name	Family	Habit	Voucher number	Nativness	Distribution	
					Meghalaya	Worldwide
<i>Anacolosa ilicoides</i> Mast.	Oleaceae	T	ASSAM, DK Roy 125983 (22.iv.2012) Balpakram, Garo Hills	E	Nokrek, Siju	Indo-Burma
<i>Jasminum cardiomorphum</i> P.S. Green*	Oleaceae	Sh	K (image!), K000545655, Tessier-Yandell, (?..ii.1973), Meghalaya	NE	Khasi & Jaintia hills (locality not specified)	Meghalaya
<i>Jasminum listeri</i> King ex Gage	Oleaceae	Sh	ASSAM, B. Singh 114602 (23.ii.2007) Daribokgre, Garo Hills	E	Sella forest, Dawki, Nokrek, Balpakram, Daribokgre	Indo-Burma
<i>Jasminum subglandulosum</i> Kurz	Oleaceae	Sh	ASSAM, A.H. Mir, 00914 (09.xi.2016) Nongstoin, West Khasi Hills	E	Umsaw.	Indo-Burma
<i>Ligustrum myrsinites</i> Decne.	Oleaceae	T	ASSAM, AH Mir, 03075 (20.i.2016) Lyngiong, East Khasi Hills	NE	Elephant falls, Upper Shillong, Sadew, Dympep, Mawphlang	Meghalaya
<i>Olea salicifolia</i> Wall. ex G.Don	Oleaceae	T	ASSAM, A.H. Mir, 04128 (22.ix.2016) Laityknew, East Khasi Hills	E	Cherrapunjee, Soharim, Mawmsai, Mawkyrwat, Nongstoin, Nongsynrieh	Indo-Burma.
<i>Acampe ochracea</i> (Lindley) Hochr	Orchidaceae	Ep	ASSAM, B. Singh 116699 (?), Nokrek Peak, Garo Hill	E	Dawki, Nongpoh, Garampani, Raliang, Nokrek Peak	Indo-Burma
<i>Acampe papillosa</i> (Lindley) Lindley	Orchidaceae	Ep	ASSAM, B. Singh 116700 (?), Daribokgre, Garo Hill	E	Burnihat, Nongpoh, Raliang, Gokha, Rongrenggre	Eastern Himalaya and Indo-Burma
<i>Agrostophyllum brevipes</i> King & Pantl.*	Orchidaceae	Ep	ASSAM, R.N. De 17137 (?), Nokrek Hills, Garo Hills	E	Jowai, Laitryngew, Leska, lalong, Raliang, Nokrek.	Indo-Burma
<i>Agrostophyllum callosum</i> Rchb.f.	Orchidaceae	Ep	ASSAM, A.H. Mir, 05649 (06.ii.2017) Cherrapunjee, East Khasi Hills	E	Cherapunjee, Laitryngew, Kynshi, Mawphlang, Pynursla, Shillong Peak, Mawmluh, Nokrek	Eastern Himalaya and Indo-Burma
<i>Agrostophyllum flavidum</i> Phukan*	Orchidaceae	Ep	ASSAM, S. Phukan 68257B (?..v.1985), Khasi Hills	NE	Shillong Peak	Meghalaya
<i>Agrostophyllum planicaule</i> (Wall. ex Lindl.) Rchb.f.	Orchidaceae	Ep	ASSAM, B. Singh 35839 (?), Nokrek Peak, Garo Hills	E	Dawki, Lundai, Mawmsai, Cherrapunjee, Syndai, Jarain, Nongpoh, Balpakram, Nokrek	Indo-Burma
<i>Arachnis labrosa</i> (Lindl. & Paxton) Rchb.f.*	Orchidaceae	Ep	ASSAM G.K. Deka 36069 (04.x.1950) Khasi & Jaintia Hills	E	Markasa, Umsaw, Dawki	Eastern Himalaya and Indo-Burma
<i>Brachycorythis galeandra</i> (Rchb.f.) Summerh.	Orchidaceae	H	ASSAM C.Deori & S.R.Talukdar 134226 (5.vii.16), Nongstoin, West Khasi Hills	E	Cherrapunjee, Mawmluh, Laitlyngkot, Mawryngkneng, Nongkrem, Nongstoin, Sadew, Umkhlaw, Shillong Peak	Eastern Himalaya and Indo-Burma
<i>Bulbophyllum blepharistes</i> Rchb.f.*	Orchidaceae	H	ASSAM, G.K. Deka 35652, Nongpoh, Ribhoi district	E	Cherapunjee	Indo-Burma
<i>Bulbophyllum careyanum</i> (Hook.) Spreng.	Orchidaceae	Ep	ASSAM, D.K. Roy 129659 (12.iii.2013) Balpakram, Garo Hills	E	Bholaganj, Pynursla, Nongpoh, Balphakram	Eastern Himalaya and Indo-Burma
<i>Bulbophyllum cauliflorum</i> Hook.f.	Orchidaceae	Ep	ASSAM, D. Verma 134121 (28.vi.2014) Mukhaialong, Jaintia Hills	E	Cherrapunjee, Dawki, Jowai	Indo-Burma
<i>Bulbophyllum cherrapunjeensis</i> Barbhuiya & D.Verma*	Orchidaceae	Ep	ASSAM, Barbhuiya & Verma 112212 (07.vii.2013), Cherrapunjee, West Khasi Hills	NE	Cherrapunjee	Meghalaya
<i>Bulbophyllum chyrmangensis</i> D.Verma, S.Lavania & Sushil K. Singh*	Orchidaceae	Ep	ASSAM, D. Verma 53 (08.x.2013) Chyrmang, West Jaintia Hills District	NE	Chyrmang	Meghalaya
<i>Bulbophyllum griffithii</i> (Lindl.) Reiclb*	Orchidaceae	Ep	ASSAM, J. Joseph 37309 (17.x.66) Elephant falls, East Khasi Hills	E	lalong, Jowai Nokrek Balpakram, Shillong, Upper shillong	Indo-Burma
<i>Bulbophyllum gymnopus</i> Hook.f.	Orchidaceae	Ep	ASSAM, C.Deori & S.R.Talukdar 134502 (30.xi.16) Mawthawpdah, South West Khasi Hills	E	Cherapunjee, Mawmsai, Shillong, Saifalls, Balpakram, Nokrek	Eastern Himalaya and Indo-Burma
<i>Bulbophyllum hirtum</i> (Smith) Lindl.	Orchidaceae	Ep	ASSAM, C.Deori 1011285 (12.xi.13), Cherrapunjee, East Khasi Hills	E	Barapani, Cherrapunjee, Shillong Peak, Nongpoh	Indo-Burma
<i>Bulbophyllum leopardinum</i> (Wall.) Lindl.	Orchidaceae	Ep	ASSAM, C.Deori & S.R.Talukdar 137747 (30.vi.17), Kyllang forest West Khasi Hills District	E	Pynurslla, Sadew forest, Soharim, Shillong	Eastern Himalaya and Indo-Burma
<i>Bulbophyllum leptanthum</i> Hook.f.*	Orchidaceae	Ep	K (image!), K000894303, Hooker J.D. and Thompson T. Cherrapunjee.	E	Pynursla, Sadew, Soharim, Shillong	Northeastern India

Name	Family	Habit	Voucher number	Nativness	Distribution	
					Meghalaya	Worldwide
<i>Bulbophyllum manabendrae</i> D.K. Roy Barbhuiya & A.D. Talukdar	Orchidaceae	Ep	ASSAM, D.K. Roy 129694 (12.iii.2013) Balpakram, Garo Hills	NE	South Garo hills	Meghalaya
<i>Bulbophyllum moniliforme</i> Part. ex. Reichb. f.	Orchidaceae	Ep	ASSAM, N.C. Deori, 51737 (21.ii.73) Jarain, Jaintia Hills District	E	Jarain	Nepal and Indo-Burma
<i>Bulbophyllum piluliferum</i> King & Pantl.*	Orchidaceae	Ep	ASSAM, N.P. Balakrishnan 42283 (31.v.1965) Jowai, Jaintia Hills	E	Jowai	Northeastern India
<i>Bulbophyllum scabratum</i> Reichb.f.	Orchidaceae	Ep	ASSAM, C. Deori & S.R.T. 137724 (10.v.17), West Khasi Hills	E	Cherapunjee, Shillong Peak, Mawsmi	Eastern Himalaya and Indo-Burma
<i>Bulbophyllum striatum</i> (Griff.) Reichb.f.	Orchidaceae	Ep	ASSAM, A.H. Mir, 05644 (06.ii.2017) Dympep, East Khasi Hills.	E	Jowai, Kynshi- Markasa, Shillong-peak, Nokrek	Eastern Himalaya and Indo-Burma
<i>Calanthe densiflora</i> Lindl.*	Orchidaceae	H	ASSAM, G.Panigrahi 4620 (21.xi.56) Dawki from Pynursla I.B.	E	Jowai, Pynursla, Shillong, Mahadeo, Nokrek	Indo-Burma
<i>Cheirostylis griffithii</i> Lindl.	Orchidaceae	H	ASSAM, AH Mir, 04140 (25.vi.2015) Nonglang, South West Khasi Hills	E	Mawphlang, Mawkyrwat, Nongstoin, Mawmluh, Mawsmi	Eastern Himalaya and Indo-Burma
<i>Cheirostylis pusilla</i> Lindl.*	Orchidaceae	H	ASSAM, D.K. Roy & D. Vijayan 128919 (11.ix.2018) Pongtung, Khasi Hills	NE	Khasi Hills – Pontung	Meghalaya
<i>Cleisostoma appendiculatum</i> (Lindl.) Benth. & Hook. f. ex Jackson	Orchidaceae	Ep	ASSAM, D.B. Deb 29295 (?), Nokrek Peak, Garo Hill	E	Jarain, Nongstoin, Balpakram, Nokrek	Indo-Burma
<i>Cleisostoma aspersum</i> (Rchb.f.) Garay*	Orchidaceae	Ep	ASSAM, C.Deori 131605 (16.xii.15) Botanical garden, collected from Pynursla, East Khasi Hills	E	Pynursla, Shillong Peak	Eastern Himalaya and Indo-Burma
<i>Cleisostoma filiforme</i> (Lindley) Garay	Orchidaceae	Ep	ASSAM, B. Singh 116760 (?), Rongrengiri, Garo Hill	E	Umsaw, Rongrengiri, Nongpoh, Nokrek, Rongrengiri	Eastern Himalaya and Indo-Burma
<i>Cleisostoma racemiferum</i> (Lindley) Garay*	Orchidaceae	Ep	ASSAM, M.K.V. Rao 64609 (?) Nokrek Peak, Garo Hills	E	Jowai, Ramtai, Syndai, Umsaw, Umrangshu	Eastern Himalaya and Indo-Burma
<i>Cleisostoma subulatum</i> Blume*	Orchidaceae	Ep	ASSAM, M.K.V. Rao 64609 (?) Nokrek Peak, Garo Hills	E	Nongpoh, Pyndeng-slu-Kop, Balpakram, Nokrek	Indo-Burma
<i>Coelogyne barbata</i> Griff.	Orchidaceae	Ep	ASSAM, AH Mir, 03061 (19.ii.2015) Saitbakon, East Khasi Hills.	E	Cherrapunjee, Mawsmi, Sohrarim, Nongstoin, Balpakram, Nokrek	Eastern Himalaya and Northeastern India
<i>Coelogyne corymbosa</i> Lindl.*	Orchidaceae	Ep	ASSAM, G.V.S.R. 28188 (?) Nokrek, Garo Hills	E	Dympep, Mawphlang, Sohrarim, Pynursla, Saitbakon, Lynshing, Nokrek	Eastern Himalaya and Indo-Burma
<i>Coelogyne flaccida</i> L.	Orchidaceae	Ep	ASSAM, B Singh 116786 (?) Simsanggre, Garo Hills	E	Jarain, Jowai, Shillong Peak, Nokrek	Eastern Himalaya and Northeastern India
<i>Coelogyne fuscescens</i> Lindl.	Orchidaceae	Ep	ASSAM, B Singh 116759 (?) Rongrengre, Garo Hills	E	Cherrapunjee, Sohrarim, Nokrek, Rongrengre.	Eastern Himalaya and Indo-Burma
<i>Coelogyne longipes</i> Lindl.	Orchidaceae	Ep	ASSAM, B. Singh 116695 (?) Sisubibra, Garo Hills	E	Cherrapunjee, Nokrek	Eastern Himalaya and Indo-Burma
<i>Coelogyne micrantha</i> Lindl.*	Orchidaceae	Ep	ASSAM, S. Das 55474 (11.ii.1975) Jarain, Jaintia Hills	E	Cherrapunjee, Jowai, Nongkhaw, Nongstoin	Eastern Himalaya and Indo-Burma
<i>Coelogyne occultata</i> Hook.f.*	Orchidaceae	Ep	ASSAM, S.D. Sangma 60130 (?) Sellengiri, Garo Hills	E	Cherrapunjee, Jarain, Lynshing, Pynursla, Pongtung, Nokrek	Eastern Himalaya and Indo-Burma
<i>Coelogyne ovalis</i> Lindl.*	Orchidaceae	Ep	ASSAM, SR Sarma 20266 (22.xi.1938) Sohrarim, Jaintia Hills	E	Pongtung, Sohra-rim, Shella, Nokrek	Indo-Burma and Nepal
<i>Coelogyne prolifera</i> Lindl.	Orchidaceae	Ep	ASSAM, M.K.V. Rao 61442 (?) Darogiri, Garo Hills	E	Cherrapunjee, Mawsmi, Jarain, Nongkhyllem, Nokrek	Eastern Himalaya and Indo-Burma
<i>Coelogyne punctulata</i> Lindl.	Orchidaceae	Ep	ASSAM, A.H. Mir, 03085 (22.vi.2014) Pynursla, East Khasi Hills	E	Amwee, Cherrapunjee, Mawmluh, Mawsmi, Jarain, Kyllang rock, Shillong, Balpakram, Nokrek	Eastern Himalaya and Indo-Burma
<i>Coelogyne schultesii</i> S.K.Jain & S.Das	Orchidaceae	Ep	ASSAM, B. Singh 116695 (?) Sisubibra, Garo Hills	E	Cherrapunjee, Nongstoin, Jarain, Markasa, Nokrek	Indo-Burma
<i>Coelogyne stricta</i> (Don) Schltr.*	Orchidaceae	Ep	ASSAM, SD Sangma 55496 (04.iv.1974) Salbengiri, Garo Hills	E	Jarain, Cherrapunjee, Nokrek	Eastern Himalaya and Indo-Burma

Name	Family	Habit	Voucher number	Nativness	Distribution	
					Meghalaya	Worldwide
<i>Coelogyne suaveolens</i> (Lindl.) Hook.f.	Orchidaceae	Ep	ASSAM, B. Singh 116716 (?) Khalakgre, Garo Hills	E	Cherrapunjee, Jowai, Nongkhaw, Nongpoh, Umsning- Noonmati, Nokrek	Indo-Burma
<i>Coelogyne viscosa</i> Rchb.f.*	Orchidaceae	Ep	ASSAM, G.K.Deka 25053 (07.iii.1961), Jowai, Jaintia Hills	E	Jarain, Barapani, Jowai	Eastern Himalaya and Northeastern India
<i>Corybas himalaicus</i> (King & Pantl.) Schltr*	Orchidaceae	Ep	ASSAM, J. Joseph 84079 (?) Nokrek Peak, Garo Hills	E	Upper Shillong, Elephant falls, Nokrek	Indo-Burma.
<i>Crepidium khasianum</i> (Hook.f.) Szlach.	Orchidaceae	H	ASSAM, A.H. Mir, 02235 (14.vi.2017) Mawkyrwat, South West Khasi Hills	E	Jarain, Shillong Peak	Indo-Burma and Nepal
<i>Cryptochilus sanguinea</i> Wall.*	Orchidaceae	Ep	ASSAM, R.N. De 22167 (?) Tura Peak, Garo Hills	E	Cherrapunjee, Mawsmi, Dawki, Jarain, Pynursla, Jowai, Nokrek, Tura Peak	Northeastern India, Bhutan and Nepal
<i>Cymbidium cochleare</i> Lindl.*	Orchidaceae	Ep	ASSAM, G.K.Deka 25053 (07.iii.61), Jowai, Jaintia Hill district	E	Jarain, Jowai, Nongstoin	Eastern Himalaya and Northeastern India.
<i>Cymbidium devonianum</i> Paxt. Mag*	Orchidaceae	Ep	ASSAM, T.M.Hynniewta 50835 (07.iv.72), Cherrapunjee, East Khasi Hills	E	Cherrapunjee, Nongstoin, Nokrek	Northeastern India, Bhutan, Nepal and Thailand
<i>Cymbidium eburneum</i> Lindl.*	Orchidaceae	Ep	ASSAM, T.M.Hynniewta 51864 (15.xi.72) Jarain, Jaintia Hills district	E	Markasa, Sonapur, Nongstoin, Mairang, Shillong peak, Nokrek	Nepal and Indo-Burma
<i>Cymbidium elegans</i> Lindl.	Orchidaceae	Ep	ASSAM, DK Roy 129741 (01.ii.2014) Balpakram, Garo Hills	E	Mawphlang, Nongkhaw, Peak Forest, Shillong, Smit, Nongkrem, Balpakram	Eastern Himalaya and Indo-Burma
<i>Cymbidium mastersii</i> Griff.*	Orchidaceae	Ep	ASSAM, G. K. Deka Accn. no. 36054 (31.x.52), Pontung, Khasi & Jaintia Hills,	E	Pongtung, Shillong	Eastern Himalaya and Indo-Burma
<i>Dendrobium anceps</i> Swartz	Orchidaceae	Ep	ASSAM, C.Deori & SRT, 137765 (09.vi.17) BSI, Botanical garden, originally collected from Nongkhaw, West Khasi Hill District	E	Mawphlang, Nongpoh, Nokrek	Himalaya, Indo-Burma
<i>Dendrobium gibsonii</i> Lindl.	Orchidaceae	Ep	ASSAM, C. Deori 101155 (29.vii.04), Jowai, Jaintia Hill District	E	Cherrapunjee, Shillong peak, Nongkhaw	Eastern Himalaya and Indo-Burma
<i>Dendrobium hookerianum</i> Lindl.	Orchidaceae	Ep	ASSAM, C.Deori 101157 (29.vii.2004) Shillong Peak, East Khasi Hills	E	Cherrapunjee, Mawphlang, Pynursla, Shillong peak	Indo-Burma
<i>Dendrobium infundibulum</i> Lindl.*	Orchidaceae	Ep	ASSAM, G. K. Deka 35539, Nongpoh	E	Nongpoh, Nokrek	Indo-Burma
<i>Dendrobium khasianum</i> Deori	Orchidaceae	Ep	ASSAM, C. Deori 101136 (01.v.04), Experimental Garden, Barapani, originally collected from Pongtong forest	E	Pontang forest, Mawphlang	Meghalaya, Nagaland
<i>Dendrobium longicornu</i> Lindl.	Orchidaceae	Ep	ASSAM, A.H. Mir, 03077 (21.vii.2015) Pongtung, East Khasi Hills	E	Cherapunjee, Nongstoin, Mawmluh, Pongtung, Saitbakon, Jarain, Nongthlang	Eastern Himalaya and Indo-Burma
<i>Dendrobium ruckeri</i> Lindl.	Orchidaceae	Ep	ASSAM, A.H. Mir, 02135 (13.iii.2015) Nongstoin, West Khasi Hills	E	Cherrapunjee, Pongtung, Nongpoh	Eastern Himalaya and Indo-Burma
<i>Dendrobium terminale</i> Par. & Reichb. f.*	Orchidaceae	Ep	ASSAM, J. Joseph 45653, Nongpoh	E	Jowai, Nongpoh, Nokrek	Nepal and Indo-Burma
<i>Eria acervata</i> Lindl.*	Orchidaceae	Ep	ASSAM Nongpoh forest, N.P.Balakrishnan 47389 (14.xi.69), Jowai	E	Shillong, Sonapahar, Nongpoh	Eastern Himalaya and Indo-Burma
<i>Eria arunachalensis</i> A.N.Rao	Orchidaceae	Ep	ASSAM, C.Deori 116279 (15.iii.2007), Sohryngkham, Jaintia Hills district	NE	Jowai	Indo-Burma
<i>Eria bambusifolia</i> Lindl.	Orchidaceae	Ep	ASSAM, C.Deori & S.R.Talukdar 145438 (5.iv.18), Nongstoin, West Khasi Hill	E	Sutnga, Balpakram	Indo-Burma
<i>Eria carinata</i> Gibs.*	Orchidaceae	Ep	ASSAM, N.P.Balakrishnan 47337 (10.xi.70), Jarain	E	Cherrapunjee, Dawki-Pynursla, Pongkung	Eastern Himalaya and Indo-Burma
<i>Eria clavicaulis</i> Lindl.	Orchidaceae	Ep	ASSAM, B Singh 118275 (?) Sabokgre, Garo Hills	E	Jarain, Pynursla, Nokrek	Eastern Himalaya and Northeastern India
<i>Eria coronaria</i> (Lindl.) Reichb.f	Orchidaceae	Ep	ASSAM, A.H. Mir, 03087 (22.vii.2014) Lynshing, East Khasi Hills.	E	Cherrapunjee, Laitkor, Mawphlang, Mairang, Nokrek	Eastern Himalaya and Indo-Burma

Name	Family	Habit	Voucher number	Nativness	Distribution	
					Meghalaya	Worldwide
<i>Eria excavata</i> (Wall.) Lindl.*	Orchidaceae	Ep	ASSAM, R.S. Rao 11191 (05.vi.1958) Shillong Peak, Khasi Hills	E	Barapani, Cherrapunjee, Mawphlang, Mawrynkneng, Nongstoin, Pongtung	Eastern Himalaya, North east India.
<i>Eria ferruginea</i> Lindl.	Orchidaceae	Ep	ASSAM, A.H. Mir, 02143 (13.v.2015) Mawmluh, East Khasi Hills.	E	Cherrapunjee, Mawsynram, Jarain, Nokrek	Eastern Himalaya and Meghalaya
<i>Eria glandulifera</i> Deori & Phukan	Orchidaceae	Ep	ASSAM, N.C.Deori 71816B (18. iv.78), Mawsmai forest, East Khasi Hill District	E	Mawsmai	Northeastern India
<i>Eria paniculata</i> Lindl.	Orchidaceae	Ep	ASSAM, C.Deori & S.R.Talukdar 137613 (06.iv.17), Mawthawdong, West Khasi Hills	E	Jarain, Jowai, Pynursla-Dawki, Nokrek	Eastern Himalaya and Indo-Burma
<i>Eria pannea</i> Lindl.*	Orchidaceae	Ep	ASSAM, C.Deori & S.R.Talukdar 137613 (06.iv.17), Trysung, West Khasi Hills	E	Cherrapunjee, Jarain	Eastern Himalaya and Indo-Burma
<i>Eria pusilla</i> (Griff.) Lindl.	Orchidaceae	Ep	ASSAM, C.Deori 51609 (16.iv.72), Jarain, Jaintia Hill district	E	Cherrapunjee, Mawmloo, Pongtung, Nokrek	Indo-Burma
<i>Eria stricta</i> Lindl.	Orchidaceae	Ep	ASSAM, B. Singh 114676 (?) Nokrek Peak, Garo Hills	E	Umlowu, Jarain-Dawki, Nongstoin, Balpakram, Nokrek	Nepal and Indo-Burma
<i>Eriodes barbata</i> (Lindl.) Rolfe*	Orchidaceae	Ep	ASSAM, C.Deori & S.R.Talukdar, 134847(01.xii.16)Nongstoin community forest, West Khasi Hill District	E	Kyllang rock, Shillong peak	Eastern Himalaya and Northeastern India
<i>Esmeralda cathcartii</i> (Lindl.) Rchb.f.*	Orchidaceae	Ep	ASSAM, S.Phukan 102814 Khasi Hills	E	Shillong Peak	Eastern Himalaya and Northeastern India
<i>Esmeralda clarkei</i> Rchb.f.*	Orchidaceae	Ep	ASSAM, S. Phukan 102900 (30.x.2006) Balpakram, Garo Hills	E	Kyllang rock.	Eastern Himalaya and Indo-Burma
<i>Galeola falconeri</i> Hook.f.*	Orchidaceae	H	ASSAM, U. Kanjilal 7189 (08. vi.1917) Barapani, Ribhoi District	E	Barapani, Mawphlang, Mairang, Pariong	Eastern Himalaya and Indo-Burma
<i>Gastrochilus acutifolius</i> (Lindl.) O.Ktze.*	Orchidaceae	Ep	ASSAM, N.P. Balakrishnan 42757 (20.vii.65) Jarain	E	Nokrek, Sutunga, Cherrapunjee, Mawsmai, Jowai, Jarain	Eastern Himalaya and Indo-Burma
<i>Gastrochilus distichus</i> (Lindley) Kuntze*	Orchidaceae	Ep	ASSAM, G.K. Deka 36167 (15. iii.1950) Lawlyngdoh forest	E	Mawphlang, Nokrek	Eastern Himalaya, North east India
<i>Gastrochilus inconspicuus</i> (Hook. f.) Kuntze*	Orchidaceae	Ep	ASSAM, G.Panigrahi, 4123 (28.x.57.) Jowai, Jaintia Hills	E	Nokrek, Jowai, Nongpoh, Sohrarim, Nartiang, Umsaw, Rongrengree, Balphakram	Eastern Himalaya and Northeastern India
<i>Gastrodia exilis</i> Hook.f.*	Orchidaceae	Ep	ASSAM, N.C.Deori 51777 (21.x.73), Pynursla, East Khasi hills	E	Amwee, Nongkhylllem, Railang	Northeastern India and Thailand
<i>Goodyera hispida</i> Lindl.*	Orchidaceae	H	GH (image!), GH00090573, J.D. Hooker & T.Thomson 2110 (18. viii.1850) Khasia, Cherrapunjee, East Khasi Hills District	E	Cherrapunjee, Jowai	Indo-Burma
<i>Goodyera recurva</i> L.*	Orchidaceae	Ep	ASSAM G.K. Deka 10115, Nokrek National Park, Garo Hill	NE	Mawphlang, Nokrek	Meghalaya
<i>Habenaria khasiana</i> Hook.f.	Orchidaceae	H	ASSAM, A.H. Mir, 00903 (05. viii.2016) Lynshing, East Khasi Hills	E	Cherrapunjee, Jarain, Jowai, Laillyngkot, Pongtung, Khelierat, Rytiang, Mawsmai	Indo-Burma
<i>Habenaria malleifera</i> Hook.f.*	Orchidaceae	H	K (image!), K000873762, J.D.Hooker & T.Thomson, 257 (28.vii.1850), Myrang, West Khasia Hills	E	Tura, Mairang, Nongkhlaw	Northeastern India
<i>Herpysma longicaulis</i> Lindl.*	Orchidaceae	H	ASSAM, D.B. Deb 29138 (?) Baghmara, Garo Hills	E	Cherrapunjee, Nokrek	Indo-Burma
<i>Liparis bistrata</i> E.C.Parish. & Reichb.f.*	Orchidaceae	Ep	ASSAM, G.V.S. Rao 28198 (23.iii.65), Nongstoin	E	Nongstoin, Cherrapunjee	Indo-Burma
<i>Liparis luteola</i> Lindl.	Orchidaceae	Ep	ASSAM, C. Deori & S.R.Talukdar 134509 (30.xi.16) Mawthawpdap, South west Khasi Hills	E	Mawthawpdap, Jowai, Jarain, Nokrek, Cherrapunjee, Pynursla, Mawsmai, Balphakram,	Indo-Burma
<i>Liparis nervosa</i> (Thunb.) Lindl.*	Orchidaceae	Ep	ASSAM, M.K.V. Rao 53324 (?) Baghmara, Garo Hills	E	Garampani, Jowai, Jorain, Balphakram, Nokrek	Eastern Himalaya and Northeastern India

Name	Family	Habit	Voucher number	Nativness	Distribution	
					Meghalaya	Worldwide
<i>Liparis petiolata</i> (D.Don) P.F.Hunt & Summerh.*	Orchidaceae	H	ASSAM, T.M.Hynniewta 50897 (17. vi.72), Mawphlang,	E	Cherrapunjee, Mawphlang, Shillong Peak, Mawsmai	Eastern Himalaya and Northeastern India
<i>Liparis resupinata</i> Ridl.	Orchidaceae	Ep	ASSAM, C. Deori & S.R.Talukdar 134836 (5.xii.16), Umeit forest, west khasi Hill District	E	Lailyngkot, Laitkor, Shillong peak	Eastern Himalaya and Meghalaya
<i>Luisia psyche</i> Reichb.f.*	Orchidaceae	Ep	ASSAM, N.P. Balakrishnan 50244 (23.iii.1970) Jowai, Jaintia Hills	E	Shillong, Smit, Jowai	Indo-Burma
<i>Micropera mannii</i> (Hook.f.) Tang & F.T.Wang	Orchidaceae	Ep	ASSAM, B. Singh 116887 (?) Neingmandalgiri, Garo Hills	E	Garampani, Cherrapunjee, Jowai, Pynursla, Dawki, Shillong Peak, Nokrek	Northeastern India
<i>Micropera rostrata</i> (Roxb.) N.P.Balacr.	Orchidaceae	Ep	ASSAM, A.H. Mir, 04360 (26. iv.2015) Cherrapunjee, East Khasi Hills.	E	Cherrapunjee, Jowai, Dawki, Pynursla, Umkhlaw, Mawmluh	Indo-Burma
<i>Neogygia gardneriana</i> (Lindl.) Rchb.f.	Orchidaceae	Ep	ASSAM C. Deori 131667(12.xi.15) East Khasi Hills	E	Cherrapunjee, Pynursla, Dawki, Mawmluh, Nongkhlaw, Nokrek	Eastern Himalaya and Indo-Burma
<i>Nephelaphyllum cordifolium</i> Lindl.	Orchidaceae	Ep	ASSAM, A.H. Mir, 04361 (26. iv.2015) Cherrapunjee, East Khasi Hills	E	Jarrain, Cherapunjee.	Northeastern India
<i>Oberonia acaulis</i> Griff.*	Orchidaceae	Ep	ASSAM, M.K.V. Rao 22530 (?) Tura Peak, Garo Hills	E	Cherrapunjee, Jowai, Nongstoin, Shillong peak, Balpakram, Nokrek	Eastern Himalaya and Northeastern India
<i>Oberonia ensiformis</i> (Smith) Lindl.	Orchidaceae	Ep	ASSAM, AH Mir, 02240 (15.v.2017) Mawmluh, East Khasi Hills	E	Cherapunjee, Mawmluh, Bholaganj, Nongpoh, Umling	Nepal and Indo-Burma
<i>Oberonia jenkinsiana</i> Griffith	Orchidaceae	Ep	ASSAM, A.H. Mir, 02241 (15.v.2017) Mawmluh, East Khasi Hills	E	Dympep, Lailyngkot, Laitkor, Shillong peak	Indo-Burma
<i>Oberonia obcordata</i> Lindl.*	Orchidaceae	Ep	ASSAM, S.Phukan 102809 (02. vi.2004), Khasi Hills	E	Cherrapunjee, Soharim, Mawmluh	Eastern Himalaya and Indo-Burma
<i>Oberonia pyrulifera</i> Lindl.*	Orchidaceae	Ep	ASSAM, G.Panigrahi 21238 (23. ii.60) Mawphlang	E	Cherrapunjee, Jowai.	Indo-Burma
<i>Odontochilus lanceolatus</i> (Lindl.) Blume	Orchidaceae	H	ASSAM, B. Singh 35835 (?), Nokrek Peak, Garo Hill	E	Pongtung, Nokrek	Eastern Himalaya and Indo-Burma
<i>Otochilus albus</i> Lindl.*	Orchidaceae	Ep	ASSAM, N.P.Balakrishnan 42297 (31.viii.65) Jowai-Jarain road	E	Dympep, Jowai, Jowai-Jarain, Shillong Peak	Indo-Burma.
<i>Otochilus fusca</i> Lindl.*	Orchidaceae	Ep	ASSAM, G.Panigrahi 464425.xi.56). on the way to Dawki from Pynursla	E	Amwee, Jowai, Kyllang Rock, Pynursla-Dawki, Shillong Peak, Nokrek	Northeastern India and Nepal.
<i>Panisea uniflora</i> (Lindl.) Lindl	Orchidaceae	Ep	ASSAM, D.K. Roy 129671 (12. iii.2013) Balpakram, Garo Hills	E	Khasi hills, Balphakram	Eastern Himalaya and Indo-Burma
<i>Paphiopedilum insigne</i> (Wall.) Pfitz.	Orchidaceae	H	ASSAM, B. Singh sn (?) Nokrek, Garo Hills	E	Cherrapunjee, Lawba, Balphakram, Nokrek	Indo-Burma
<i>Paphiopedilum venustum</i> (Wall ex Sims.) Pfitz.	Orchidaceae	H	ASSAM, D.K. Roy 129663 (12. iii.2013) Balpakram, Garo Hills	E	Jarain, Pynursla, Syndai, Lumshnong, Balphakram	Indo-Burma and Nepal
<i>Papilionanthe teres</i> (Roxb.) Schltr.	Orchidaceae	Ep	ASSAM, Singh sn (?) Nokrek Hills, Garo Hills	E	Bholaganj, Dawki, Burnihat, Mairang, Nongpoh, Shillong Peak, Balphakram, Nokrek	Indo-Burma
<i>Papilionanthe uniflora</i> (Lindl.) Garay*	Orchidaceae	Ep	ASSAM, G.K.Deka 36111 (18.iii.52) Upper Shillong.	E	Markasa, Shillong Peak, Burnihat, Mawphlang	Meghalaya and Eastern Himalaya
<i>Pelatantheria insectifera</i> (Rchb.f.) Ridl.*	Orchidaceae	Ep	ASSAM, G. Panigrahi 4123 (28.x.57), Jowai	E	Jowai, Pynursla	Eastern Himalaya and Indo-Burma
<i>Pennilabium labanyaeanum</i> C.Deori, N.Odyuo & A. A.Mao	Orchidaceae	Ep	ASSAM, C.Deori N.Odyuo 134226 (23.vii.14), Laitkyrhong, East Khasi Hills	NE	Laitkyrhong, East Khasi Hills	Meghalaya
<i>Pennilabium proboscideum</i> AS Rao & Joseph*	Orchidaceae	Ep	ASSAM, A.S.Rao 45622B (23. vii.1966), between Umran & Umsaw, Ribhoi district	NE	Umran, Umsaw	Meghalaya
<i>Peristylus cubitalis</i> (L.) Kraenzl.*	Orchidaceae	H	CAL, C.B.Clarke, 38575, (07. viii.1885), Meghalaya, Shillong	E	Pynursla	Indo-Burma
<i>Peristylus mannii</i> (Rchb.f.) Muke.*	Orchidaceae	H	ASSAM, G.H.Bhowmik 60317, West Khasi Hills	E	Cherrapunjee, Mairang, Mawphlang, Shillong peak, Laitlyngkot	Indo-Burma

Name	Family	Habit	Voucher number	Nativness	Distribution	
					Meghalaya	Worldwide
<i>Pholidota convallariae</i> (Reichb.f.) Hook.	Orchidaceae	Ep	ASSAM, A.H. Mir, 01022 (03.ii.2017) Dympep, East Khasi Hills	E	Dympep, Jowai, Nongpoh, Shangpung, Shillong, Mahadeo, Tanglo woods	Eastern Himalaya and Indo-Burma
<i>Pholidota griffithii</i> Hook.f.	Orchidaceae	Ep	ASSAM, B. Singh 116698 (?) Daribokgre, Garo Hills	E	Cherrapunjee, Kyllang rock, Umator, Nokrek, Daribokgre	Eastern Himalaya and Indo-Burma
<i>Pholidota pallida</i> Lindl.	Orchidaceae	Ep	ASSAM, B. Singh 116891 (?) Mandalgiri, Garo Hills	E	Cherrapunjee, Mawmluh, Laitkynsew, Nongstoin, Dympep, Jowai, Shillong peak, Jarain, Amlarem, Nongpoh, Nokrek.	Indo-Burma, Nepal, Bhutan
<i>Pholidota recurva</i> Lindl.*	Orchidaceae	Ep	ASSAM, M.K.V. Rao 59475 (?) Rongrengiri, Garo Hills	E	Cherrapunjee, Podeng Slui, Nokrek.	Northeastern India and Nepal
<i>Pholidota rubra</i> Lindl.*	Orchidaceae	Ep	ASSAM, S.K.Srivastava 84047 (16.xi.83), Cherrapunjee	E	Cherrapunjee, Mawmluh, Jarrain, Jowai.	Indo-Burma and Bhutan
<i>Platanthera dyeriana</i> (King & Pantl) Kraenzl.*	Orchidaceae	H	K (image!), K000247397, R.C. Thakur 1768, East Khasi Hills District, Laitlynkot, Meghalaya	E	Laitlynkot, Mawsynram.	Indo-Burma
<i>Pleione humilis</i> (Smith) D.Don*	Orchidaceae	Ep	ASSAM, S.K. Katak 37117 (?) Nokrek Peak, Garo Hills	E	Dympep, Mawphlang, Shillong Peak, Jowai, Nokrek.	Eastern Himalaya and Indo-Burma
<i>Podochilus cultratus</i> Lindl.	Orchidaceae	EP	ASSAM, D.K. Roy 130346 (27.viii.2014) Balphakram, Garo Hills	E	Balphakram	Eastern Himalaya, Indo-Burma
<i>Podochilus khasianus</i> Hook.f.*	Orchidaceae	Ep	ASSAM, G. Panigrahi 4624 (25.xi.1956) Dawki, Jaintia Hills	E	Pongtung, Pynursla, Dawki, Balphakram	Northeastern India and Eastern Himalaya
<i>Porpax gigantea</i> Deori	Orchidaceae	Ep	ASSAM, N.C. Deori Isotype 51757B(1.vii.73), Jarain, Jaintia Hill District	NE	Jarain, Dawki	Meghalaya
<i>Rhomboda pulchra</i> (King & Pantl.) Ormerod & Av.Bhatt.	Orchidaceae	Ep	ASSAM, A.H. Mir, 02150 (14.vi.2016) Mawkyrwat, South West Khasi Hills	E	Jarain, Cherrapunjee, Mawsynram.	Eastern Himalaya and Northeas India
<i>Stereochilus hirtus</i> Lindl.*	Orchidaceae	Ep	ASSAM, J.Joseph 45165 (19.vii.66), Umsaw forest, Ribhoi District	E	Umsaw	Northeastern India, Burma and Nepal
<i>Stigmatodactylus serratus</i> (Deori) A.N.Rao*	Orchidaceae	Ep	ASSAM, C. Deori 51262C (15.ix.18), Shillong Peak forest, East Khasi Hills	NE	Shillong Peak forest	Meghalaya
<i>Sunipia bicolor</i> Lindl.*	Orchidaceae	Ep	ASSAM, T.M.Hynniewta, 51855 (25.x.72) Shillong Peak, East Khasi Hills	E	Mawphlang, Shillong, Elephant Falls, Balphakram	Indo-Burma and Eastern Himalaya; China
<i>Sunipia candida</i> (Lindl) P.F.Hunt*	Orchidaceae	Ep	ASSAM, R. Seihgal 53049, Cherrapunjee	E	Mawphlang, Soharim, Shillong Peak, Malki	Eastern Himalaya and Indo-Burma
<i>Sunipia racemosa</i> (J.E.Sm.) Tang & Wang*	Orchidaceae	Ep	ASSAM C.Deori & S.R.T. 137731 (12.v.17), Mawkyjnjo, West Khasi Hills	E	Jarain, Kyllang Rock, Markasa-Patharkhang, Nongkhlaw	Indo-Burma and Eastern Himalaya; China, Vietnam
<i>Tainia latifolia</i> (Lindl) Benth*	Orchidaceae	H	ASSAM, SK Katak 37166 (?..ii.1965) Jarain, Jaintia Hills	E	Jarain, Pynursla	Eastern Himalaya and Indo-Burma
<i>Tainia minor</i> Hook.f.*	Orchidaceae	H	ASSAM, SR Sharma 20260 (29.v.32), Dampep, Garo Hills	E	Dympep, Bampothang, Mawsmai	Eastern Himalaya and Indo-Burma
<i>Tainia viridifusca</i> (Hook.) Benth	Orchidaceae	H	ASSAM, C.Deori & S.R.Talukdar 137611 (06.iv.17), Photkynraw, West khasi hills District	E	Jarain, Cherrapunjee	Eastern Himalaya, Indo-Burma
<i>Thelasis khasiana</i> Hook.f.*	Orchidaceae	Ep	ASSAM, G.H. Bhowmik 60427, Nongkhlaw, West Khasi Hills	NE	Jowai, Nongkhlaw, Barapani, Amwee, Pomrang, Cherrapunjee, Pynursla	Meghalaya, Thailand, Vietnam
<i>Thelasis longifolia</i> Hook.f. *	Orchidaceae	Ep	ASSAM, D.B.D. 29220 (?) Rongrengiri	E	Jarain, Nokrek	Eastern Himalaya and Northeastern India.
<i>Thrixspermum muscaeflorum</i> Rao and Joseph*	Orchidaceae	Ep	ASSAM, A.S. Rao 45638B (08.xi.67), Umran and Umsaw forest, Ribhoi District	NE	Pongtung, Pynursla, Umran, Umsaw, Nongpoh	Meghalaya
<i>Thrixspermum pygmaeum</i> (K. & P.) Holtt.	Orchidaceae	Ep	ASSAM, A.H. Mir, 02234 (14.vi.2017) Mawkyrwat, South West Khasi Hills	E	Cherrapunjee	Eastern Himalaya, Nepal and Vietnam.
<i>Uncifera acuminata</i> Lindl.	Orchidaceae	Ep	ASSAM, C.Deori & S.R.Talukdar 137763 (05.xii.17), Nongkhlaw, West Khasi Hill District	E	Cherrapunjee, Soharim, Dympep, Pynursla	Eastern Himalaya and Indo-Burma

Name	Family	Habit	Voucher number	Nativness	Distribution	
					Meghalaya	Worldwide
<i>Uncifera obtusifolia</i> Lindl.	Orchidaceae	Ep	ASSAM, C.Deori 131624 (25.ix.14), East Khasi Hill District	E	Pongtung, Pynursla, Jarain, Nongkhlaw, Umran, Shella, Balphakram	Eastern Himalaya and Indo-Burma
<i>Vanda coerulea</i> Griff ex Lindl.	Orchidaceae	Ep	ASSAM, Singh sn (?) Nokrek, Garo Hills	E	Barapani, Jowai, Nartiang, Nokrek	Eastern Himalaya and Indo-Burma
<i>Vanda cristata</i> Lindl.*	Orchidaceae	Ep	ASSAM, G.K. Deka 5114 (24.i.57) Raliang	E	Jowai, Pongtung, Raliang	Eastern Himalaya and Indo-Burma
<i>Vandopsis undulata</i> (Lindl) J.J.Sm.*	Orchidaceae	Ep	ASSAM, G. Panigrahi 3979 (22.xii.57), Peak forest, Shillong	E	Jarain, Mawphlang, Shillong Peak, Elephant Falls, Laitkor.	Eastern Himalaya and Indo-Burma
<i>Dendrobium jaintianum</i> Sabap.*	Orchidaceae	Ep	Specimen not seen	NE	Jaintia hills (locality not specified)	Meghalaya
<i>Vanda jainii</i> A.S.Chauhan*	Orchidaceae	Ep	Specimen not seen	NE	Locality not specified	Meghalaya
<i>Zeuxine pulchra</i> King & Pantl.*	Orchidaceae	Ep	Specimen not seen	E	Mawphlang	North east India
<i>Dactylicapnos torulosa</i> (Hook.f. & Thomson) Hutch.*	Papaveraceae	H	K (image!) K000653381, T. Thomson, s.n. (29.vii.1850), Khasia	E	Khasi hills (locality not specified)	Indo-Burma
<i>Passiflora napalensis</i> Wall.	Passifloraceae	Cl	ASSAM, A.H. Mir, 90358 (13.viii.2016) Cherrapunjee, East Khasi Hills	E	Mawmluh, Mawsmi, Swer, Cherrapunjee.	Eastern Himalaya and Indo-Burma
<i>Adinandra griffithii</i> Dyer	Pentaphragmaceae	T	ASSAM, A.H. Mir, 88690, East Khasi Hills	E	Cherrapunjee, Mawsynram, Lynshing, Umlangmar, Shangpung, Balphakram.	Meghalaya, Nagaland
<i>Cleyera japonica</i> var. <i>grandiflora</i> (Wall. ex Choisy) Kobuski	Pentaphragmaceae	T	ASSAM, AH Mir, 90445 (15.vi.2016) Cherrapunjee, East Khasi Hills	NE	Laitryngew, Mawmluh, Cherrapunjee, Nongstoin, Hilland, Pudjuad, Jarain	Meghalaya
<i>Aporosa octandra</i> (Buch.-Ham. ex D.Don) Vickery	Phyllanthaceae	T	ASSAM, D.K. Roy 129481 (08.iii.2013) Balpakram, Garo Hills	E	Lailad, Mawsynram, Balpakram	Indo-Burma
<i>Antidesma khasianum</i> Hook.f.	Phyllanthaceae	Sh	North-Eastern Hill University, K.Haridasan 2858, Meghalaya	NE	Raliang, Mawsmi	Meghalaya
<i>Piper cornilimbum</i> C.DC.*	Piperaceae	Cl	G (image!), G00329633, Gallatly, G., (1878), Khasi and Jaintia Hills	NE	Khasi and Jaintia hills (locality not specified)	North east India (Meghalaya)
<i>Piper griffithii</i> C.DC.	Piperaceae	H	ASSAM, AH Mir, 90449 (13.x.2015) Cherrapunjee, East Khasi Hills	E	Borlong, Jowai, Nartiang, Mawsmi, Mawsynram, Nokrek	Indo-Burma
<i>Piper khasianum</i> C.DC.*	Piperaceae	Cl	ASSAM, G.K.Deka 10489 (08.i.1933), Umran	E	Umran	North east India
<i>Piper peepuloides</i> Roxb.	Piperaceae	H	ASSAM, A.H. Mir, 90305 (16.v.2015) Mawkyrwat, South West Khasi Hills	E	Pongtung, Mawkyrnnot, Cherrapunjee, Nongstoin, Mawkyrwat	Eastern Himalaya and Indo-Burma
<i>Pittosporum humile</i> Hook.f. & Thomson	Pittosporaceae	Sh	ASSAM, A.H. Mir, 02146 (13.iv.2016) Cherapunjee, East Khasi Hills	NE	Barapani, Mawsynram	Meghalaya
<i>Agrostis filipes</i> Hook.f.*	Poaceae	H	K (image!), K000032333, C.B.Clarke 43426, Shillong	NE	Shillong, Cherrapunjee, Laitlynkot, Mawkadok, Shillong peak	Meghalaya
<i>Anthoxanthum horsfieldii</i> (Benn.) Reeder*	Poaceae	H	K (image!), K000290605, C.B. Clarke 4553a Lailam Kote, Khasia	E	Nongkrem, Lumdarin	Northeastern India
<i>Arundinella khasiana</i> Nees ex Steud.	Poaceae	H	ASSAM, A.H. Mir, 00625 (18.viii.2014) Jongksha, East Khasi Hills	E	Cherapunjee, Laitryngew, Nongsteng, Mawsynram, Mawrapat, Mawkasain	Nottheast India
<i>Calamagrostis elatior</i> (Griseb.) A.Camus*	Poaceae	H	W (image!), W18890241773, J.D.Hooker & T.Thomson, 2244, Nokrek	NE	Nokrek, Upper Shillong, Shillong peak	Meghalaya
<i>Cephalostachyum manni</i> (Gamble) Stapleton*	Poaceae	H	K (image!), K000912086, G Mann 21845 (?viii.1889) Jarain, Jaintia Hills	E	Amkasur, Jarain, Umtru	Indo-Burma
<i>Cephalostachyum pallidum</i> Munro	Poaceae	Sh	ASSAM, A.H. Mir, 00678 (09.x.2015) Swer, East Khasi Hills	E	Jarain, Dawki, Pynursla, Cherrapunjee	Indo-Burma
<i>Chimonocalamus griffithianus</i> (Munro) Hsueh & T.P.Yi*	Poaceae	Sh	K (image!), K000246139, W. Griffith 39, Khasia Hills	E	Nokrek, Dawki	Indo-Burma
<i>Cymbopogon khasianus</i> (Hack.) Stapf. ex Bor.*	Poaceae	H	ASSAM, M.Bhowmik 116548 (26.ix.2007); Leska Dam site	E	Jowai, Nokrek, Williamnagar	Indo-Burma

Name	Family	Habit	Voucher number	Nativness	Distribution	
					Meghalaya	Worldwide
<i>Digitaria jubata</i> (Griseb.) Henrard*	Poaceae	H	K (image!), K000885974, J.D.Hooker & T.Thomson 2010 (02.viii.1850), Khasia Hills	NE	Shillong, Jowai, Songsak	Meghalaya
<i>Drepanostachyum khasianum</i> (Munro) Keng f.*	Poaceae	Sh	K (image!), K000246122, W.Griffith 6741, Khasia	E	Jowai, Mairang, Nongstoin, Mantendu, Mawphlang, Pynursla, Shillong, Upper Shillong	Northeastern India and Eastern Himalaya
<i>Eragrostiella leioptera</i> (Stapf) Bor*	Poaceae	H	K (image!), K000907161, C.B.Clarke, 38871 (18.viii.1885), Shillong, East Khasi Hills	NE	Shillong, Mawmluh, Balphakram.	Meghalaya
<i>Eulalia speciosa</i> var. <i>velutina</i> (Deb.) Ktze.*	Poaceae	H	ASSAM, N. L. Bor 15406 (21.i.37) Cherrapunjee, East Khasi Hills	NE	Cherrapunjee/Dawki.	Meghalaya
<i>Hierochloa khasiana</i> C.B.Clarke ex Hook.f.*	Poaceae	H	K (image!), K000032289, C.B. Clarke 43956 (23.v.1886), Mairang, West Khasi Hills	NE	Shillong, Mairang	Meghalaya
<i>Ischaemum hubbardii</i> Bor*	Poaceae	H	K (image!), K000245695, N.L. Bor 2264, Khasia & Jaintia hills	NE	Cherrapunjee, Dympep, Sohrarim	Meghalaya
<i>Yushania hirsuta</i> (Munro) R.B.Majumdar*	Poaceae	H	K (image!), K000246099, W.Griffith 6726 (9.xi.1835) Mairang, West Khasi Hills	NE	Mairang, Mawphlang, Soiong	Meghalaya
<i>Bambusa khasiana</i> Munro*	Poaceae	Sh	K (image!), K000854816, J.D.Hooker & T.Thomson (11. vi.1850), Meghalaya, Khasia	NE	Khasi hills (Mahadeb)	Meghalaya
<i>Bambusa majumdarii</i> P.Kumari & P.Singh*	Poaceae	Sh	P. Kumari & P. Singh, 2009, Kew Bulletin 64: 565.571 (2009)	NE	Tura	Meghalaya
<i>Bambusa mohanramii</i> P.Kumari & P.Singh*	Poaceae	Sh	P. Kumari & P. Singh, 2009, Kew Bulletin 64: 565.571 (2009)	NE	Khleiriah, Mawryngkneng	Meghalaya
<i>Bambusa pseudopallida</i> R.B.Majumdar*	Poaceae	Sh	ASSAM, U. Kanjilal 6108A.D (24.x.1915) Barapani, Meghalaya	E	Barapani	Indo-Burma
<i>Cephalostachyum manni</i> (Gamble) Stapleton*	Poaceae	Sh	K (image!), K000912085 G.Mann, 21845 (?viii.1889), Jaintia	NE	Khasi and Jaintia hills-Jarain	Meghalaya
<i>Panicum khasianum</i> Munro ex Hook.f.*	Poaceae	H	K (image!), K000245236 C.B. Clarke (05.ix.1886), Khasia Hills	E	Khasi hills (locality not specified)	Indo-Burma
<i>Pyrrosia flocculosa</i> (D.Don) Ching	Polypodiaceae	H	ASSAM, A.H. Mir, 02252 (15. vii.2015) Cherrapunjee, East Khasi Hills	E	Cherrapunjee	Himalaya, Indo-Burma
<i>Ardisia khasiana</i> C.B.Clarke	Primulaceae	Sh	ASSAM, A.H. Mir, 90326 (18. xii.2015) Cherrapunjee, East Khasi Hills	E	Mawsynram, Mawrapat, Laitryngew, Tura, Lailad	Indo-Burma
<i>Hymenandra wallichii</i> A.DC.	Primulaceae	Sh	ASSAM, A.H. Mir, 90357 (19.v.2016) Laitsohum, East Khasi Hills	E	Laitsohum, Mawsynram, Lawba	Northeastern India
<i>Amblyanthopsis membranacea</i> (Wall.) Mez*	Primulaceae	Sh	Specimen not seen	E	Locality not known	Himalays, Northeastern India
<i>Ardisia meghalayensis</i> M.P.Nayar & G.S.Giri*	Primulaceae	Sh	Specimen not seen	NE	Locality not specified	Meghalaya
<i>Maesa montana</i> A.DC.*	Primulaceae	Sh	North-Eastern Hill University, K. Haridasan 4735, Lailad	E	Dambu, Lailad, Nongpoh	Himalaya, Northeastern India
<i>Helicia excelsa</i> (Roxb.) Blume	Proteaceae	T	ASSAM, B. Singh s.n. (?), Nokrek Peak, Garo Hills	E	Umtesor, Mawkyrwat, Mawmluh, Nokrek Peak, Nongstoin	Indo-Burma
<i>Drypetes assamica</i> (Hook.f.) Pax & K.Hoffm.*	Putranjivaceae	T	NEHU, Haridasan 4054 (?), Tura Peak, Garo Hills	E	Tura, Nokrek	Indo-Burma
<i>Drypetes jaintensis</i> (C.B.Clarke) Pax & K.Hoffm	Putranjivaceae	T	K (image!), K000246661, C.B.Clarke, 44760A, (30.viii.1886), Jowai, Khasia	NE	Jowai	Meghalaya
<i>Clematis acutangula</i> Hook.f. & Thomson*	Ranunculaceae	Cl	K (image!), K000075704, J.D. Hooker & Thomson, Mawlyn, Khasia	E	Jowai.	Bhutan, Meghalaya and Nagaland
<i>Clematis apiculata</i> Hook.f. & Thomson*	Ranunculaceae	Cl	K (image!), K000675161, J.D. Hooker & T.Thompson, s.n. (?ix.1850), Khasia	E	Khasi hills (locality not specified)	North east India
<i>Delphinium altissimum</i> Wall.*	Ranunculaceae	H	ASSAM, U.N. Kanjilal 2480 (08. ix.13) Mawphlang	E	Upper Shillong, Smit, Um-Risa, Sohiong, Mawphlang	Eastern Himalaya and Indo-Burma
<i>Rubus calycinus</i> Wall. ex D.Don*	Rosaceae	H	ASSAM, G.K. Deka 2035 (25.v.2041) Sohrarim, Khasi Hills	E	Cherrapunjee, Sohrarim	Eastern Himalaya and Indo-Burma

Name	Family	Habit	Voucher number	Nativness	Distribution	
					Meghalaya	Worldwide
<i>Eriobotrya angustissima</i> Hook.f.*	Rosaceae	Sh	ASSAM, U.N. Kanjilal l.c. (?), Rongrenriri, Garo Hills	NE	Kapili rivir basin, Rongrengiri	Meghalaya
<i>Photinia cuspidata</i> (Bertol.) N.P.Balacr.	Rosaceae	T	ASSAM, A.H. Mir, 88688, East Khasi Hills	NE	Shangpung, Jarain, Mawsmmai, Mawmluh, Mawkyrwat, Laityngew, Nongstoin	Meghalaya
<i>Photinia polycarpa</i> (Hook.f.) N.P.Balacr.	Rosaceae	T	ASSAM, B Singh 74641 (27.ii.2010), Nokrek Peak, Garo Hills	E	Jarain, Shangpung	Indo-Burma
<i>Prunus jenkinsii</i> Hook.f. & Thomson	Rosaceae	T	ASSAM, A.H. Mir, 90435 (12.v.2015) Sangriang, West Khasi Hills	E	Nongstoin, Jarain, Nongkrem, Pynursla, Railiang, Nongsynreih, Sangriang, Nonglynkien	Bhutan and Indo-Burma
<i>Rubus assamensis</i> Focke	Rosaceae	Sh	ASSAM, A.H. Mir, 04137 (24. iv.2015) Mawsmmai, East Khasi Hills	E	Elephant falls	Indo-Burma
<i>Rubus hexagynus</i> Roxb.	Rosaceae	Sh	ASSAM, A.H. Mir, 03049 (17. iii.2016) Tynnai, South West Khasi Hills	E	Jowai, Nongpoh, Mawsmmai, Mawmluh.	Indo-Burma
<i>Rubus khasianus</i> Cardot	Rosaceae	Sh	ASSAM, A.H. Mir, 01057 (03.v.2017) Lawbah, East Khasi Hills	NE	Nokrek, lalong, Raliang, Jowai, Umtapoh, Laitryngew, Cherrapunjee, Nongstoin, Mawsmmai, Mawmluh, Jakrem	Meghalaya
<i>Rubus lucens</i> Focke	Rosaceae	Sh	ASSAM, A.H. Mir, 01058 (03.v.2017) Lawbah, East Khasi Hills	E	Umtesor, Nokrek	Indo-Burma
<i>Cotoneaster khasiensis</i> G.Klotz*	Rosaceae	Sh	ASSAM, U.Kanjilal 2650, (25. ix.1913), Laitlynkot, Meghalaya	NE	Laitlyngkot	Meghalaya
<i>Micromeles meghalayensis</i> Panigrahi*	Rosaceae	T	Specimen not seen	NE	Locality not specified	Meghalaya
<i>Micromeles polycarpa</i> (Hook.f.) Panigrahi*	Rosaceae	T	Specimen not seen	NE	Locality not specified	Meghalaya
<i>Potentilla khasiana</i> C.B.Clarke ex Dikshit & Panigrahi*	Rosaceae	H	ASSAM, H. Deka, 18309 (05. iv.1959), Shillong	NE	Shillong, Shillong-peak	Meghalaya
<i>Argostemma khasianum</i> C.B.Clarke	Rubiaceae	H	ASSAM, A.H. Mir, 90437 (05. vi.2015) Mawsmmai, East Khasi Hills	E	Saitbakon, Pongtung, Cherrapunjee, Balpakram, Syndai, Muktapur	Indo-Burma
<i>Argostemma rostratum</i> Wall.*	Rubiaceae	H	K (image!), De Silva, F, 8395, Khasia	NE	Balphakram, Nokrek.	Meghalaya
<i>Benkara fasciculata</i> (Roxb.) Ridsdale	Rubiaceae	T	ASSAM, D.K. Roy 125447 (21. iv.2012) Balpakram, Garo Hills	E	Mawsmmai, Cherapunjee, Balphakram.	Eastern Himalaya and Indo-Burma
<i>Benkara griffithii</i> (Hook.f.) Ridsdale	Rubiaceae	T	ASSAM, D.K. Roy 125656 (25. iv.2012) Balpakram, Garo Hills	E	Nokrek, Cherapunjee, Mawsynram, Mawmluh, Jarain, Jowai, Amlarem, Shangpung, Madeo, Lyngiong, Balpakram.	Northeastern India and Eastern Himalaya
<i>Coffea khasiana</i> (Korth.) Hook.f.	Rubiaceae	Sh	ASSAM, A.H. Mir, 90389 (15. iv.2015) Swer, East Khasi Hills	E	Khongshnong to Raliang, Lynshing, Lyngiong, Cherrapunjee, Mawsynram, Laitsohum, Mairang, Pynndengnongbri, Mawkyrwat, Nongstoin	Indo-Burma
<i>Hyptianthera stricta</i> (Roxb. ex Schult.) Wight & Arn.	Rubiaceae	Sh	ASSAM, A.H. Mir, 03066 (19.v.2016) Laitryngew, East Khasi Hills	E	Tura, Balphakram	Eastern Himalaya and Indo-Burma
<i>Ixora subsessilis</i> Wall. ex G.Don	Rubiaceae	T	ASSAM, A.H. Mir, 90387 (03.v.2015) Mawsmmai, East Khasi Hills	E	Mawsmmai, Cherapunjee, Jarain	Indo-Burma
<i>Lasianthus hookeri</i> C.B.Clarke ex Hook.f.	Rubiaceae	Sh	ASSAM, A.H. Mir, 90338 (03.v.2016) Mawsmmai, East Khasi Hills	E	Nokrek, Dawki, Narpuh, Sokha, Lawbah, Balphakram	Indo-Burma
<i>Leptodermis griffithii</i> Hook.f.*	Rubiaceae	Sh	ASSAM, P.C. Kanjilal 8046 (17.v.1930) Mawphlang, Khasi Hills	E	Upper Shillong, Mawphlang, Elephant falls, Jowai	Northeastern India
<i>Leptomischus wallichii</i> (Hook.f.) H.S.Lo	Rubiaceae	Sh	ASSAM, D.K. Roy 125589 (26. iv.2014) Balpakram, Garo Hills	NE	Jowai, Balpakram	Meghalaya
<i>Luculia pinceana</i> Hook.	Rubiaceae	Sh	ASSAM, A.H. Mir, 90432 (08. ii.2016) Sawsymer, South West Khasi Hills	E	Balphakram, Mawsynram, Nokrek	Eastern Himalaya

Name	Family	Habit	Voucher number	Nativness	Distribution	
					Meghalaya	Worldwide
<i>Mussaenda corymbosa</i> Roxb.*	Rubiaceae	Sh	ASSAM, N.P. Balakrishnan 49836 (15.xi.1969) Jarain-Dawki, Jaintia Hills	E	Dawki and Cherrapunjee	Indo-Burma
<i>Mussaenda roxburghii</i> Hook.f.	Rubiaceae	Sh	ASSAM, A.H. Mir, 03063 (19.v.2014) Kynshuield, East Khasi Hills	E	Nokrek, Jarain, Pongtung, Shillong, Cherrapunjee	Eastern Himalaya and Indo-Burma
<i>Myrioneuron nutans</i> Wall. ex Hook.f.*	Rubiaceae	Sh	ASSAM, A. Carlon 21174 (15.xi.1967) Cherrapunjee, Khasi Hills	E	Sokha, Balphakram	Eastern Himalaya and Indo-Burma
<i>Neanotis oxyphylla</i> (Wall. ex G.Don) W.H.Lewis	Rubiaceae	Sh	ASSAM, D.K. Roy 130067 (05.ii.2014) Balpakram, Garo Hills	E	Mawsmi, Nokrek, Balphakram	Meghalaya and Eastern Himalaya
<i>Neohymenopogon parasiticus</i> (Wall.) Bennet*	Rubiaceae	Sh	ASSAM, P.K. Hajra 51949 (09.ix.1973) Mawphlang, Khasi Hills	E	Mairang, Law-Lyngdoh, Soharim, Mawsmi, Upper Shillong, Mawphlang, Laitlyngkot	Eastern Himalaya and Indo-Burma
<i>Ophiorrhiza pauciflora</i> Hook.f.*	Rubiaceae	H	ASSAM, N.P. Balakrishnan 42258 (30.v.65) Jowai	E	Jowai	Meghalaya. and Eastern Himalaya
<i>Ophiorrhiza subcapitata</i> Wall. ex Hook.f.	Rubiaceae	H	ASSAM, A.H. Mir, 04359 (26.iv.2015) Cherapunjee, East Khasi Hills	E	Jowai, Cherapunjee, Mawsynram	Meghalaya, Burma and Thailand
<i>Ophiorrhiza tingens</i> C.B.Clarke*	Rubiaceae	H	K (image!), K000031237, C.B. Clarke 38076 (09.v.1185), Khasia	E	Mawphlang	Indo-Burma
<i>Ophiorrhiza treutleri</i> Hook. f.*	Rubiaceae	Sh	ASSAM, R.S. Rao 14055 (24.viii.1958) Shillong Peak, Khasi Hills	E	Balphakram NP, Mawphlang, Shillong Peak, Lawlyndoh	Northeastern India and Eastern Himalaya
<i>Ophirrhiza hispida</i> Hook.f.*	Rubiaceae	H	ASSAM, G. K. Deka 10105, Narpuh Reserve, K & J Hills	E	Mawsynram	Indo-Burma
<i>Pavetta subcapitata</i> Hook.f.	Rubiaceae	Sh	ASSAM, D.K. Roy 125565 (26.iv.2012) Balpakram, Garo Hills	E	Nokrek, Balphakram	Indo-Burma and Bhutan
<i>Psychotria monticola</i> Kurz*	Rubiaceae	Sh	ASSAM, G.H. Bhaumik 62028 (06.v.1975) Mawsynram, Khasi Hills	E	Mawsynram, Umling	Indo-Burma
<i>Psychotria symplocifolia</i> Kurz	Rubiaceae	Sh	ASSAM, A.H. Mir, 90424 (08.x.2015) Pongtung, East Khasi Hills	E	Soharim, Jowai, Nokrek, Jarain, Pongtung, Cherapunjee, Nongpoh, Bhoiryong, Mawkyrwat	Indo-Burma
<i>Saprosma ternatum</i> (Wall.) Hook.f.	Rubiaceae	T	ASSAM, A.H. Mir, 90434 (06.ix.2015) Mawrapat, South West Khasi Hills	E	Mawrapat, Mawkasain, Balpakram	Indo-Burma
<i>Uncaria macrophylla</i> Wall.	Rubiaceae	Cl	ASSAM, B. Singh 114791 (03.iii.2007) Chandigre, Garo Hills	E	Mahadeo, Balphakram, Nokrek	Eastern Himalaya and Indo-Burma
<i>Citrus latipes</i> (Swingle) Yu.Tanaka	Rutaceae	T	ASSAM, A.H. Mir, 90465 (06.ix.2015) Mawrapat, South West Khasi Hills	NE	Jalong, Raliang, Jowai Umjaisaw, Mairang, Lyngiong, Mawranglang, Mawkyrwat, Pydengnongbri	Meghalaya
<i>Paramignya micrantha</i> Kurz	Rutaceae	Sh	ASSAM, A.H. Mir, 90303 (23.v.2015) Lyngiong, East Khasi Hills	E	Balphakram, Raliang, Jowai, Nokrek, Cherrapunjee, Mawkyrwat, Pynrsula, Khrang	Eastern Himalaya and Northeastern India
<i>Zanthoxylum khasianum</i> Hook.f.*	Rutaceae	Cl	ASSAM, U. Kanjilal 4408 (06.ix.1914) Shillong Peak, Khasi Hills	E	Shillong, Jarain	Indo-Burma
<i>Zanthoxylum oxyphyllum</i> Edgew.	Rutaceae	Sh	ASSAM, A.H. Mir, 03080 (21.iv.2017) Laitkynsew, East Khasi Hills	E	Lailad, Jowai, Jarain, Cherrapunjee, Balphakram	Eastern Himalaya and Northeastern India
<i>Sabia lanceolata</i> Colebr.	Sabiaceae	Cl	ASSAM, A.H. Mir, 00907 (01.x.2016) Jakrem, East Khasi Hills.	E	Lailad, Nokrek, Balphakram	Indo-Burma and Northeastern India
<i>Sabia parviflora</i> Wall.*	Sabiaceae	Cl	ASSAM, P.C. Kanjilal 8770 (01.xi.1930), Barapani, Ri-Bhoi	E	Barapani, Kynshi, Elephant falls	Indo-Burma
<i>Sabia purpurea</i> Hook.f. & Thomson*	Sabiaceae	Cl	ASSAM, M.K.V. Rao 63977 (?) Nokrek, Garo Hills	E	Cherrapunjee, Mawsynram, Mawmluh, Jakrem, Umtong, Balphakram, Lawbah, Nokrek	Indo-Burma
<i>Homalium bhamaense</i> Cubitt & W. W. Sm.*	Salicaceae	T	ASSAM, G.K. Deka 21203 (?), 35 th Mile, Khasi Hills	E	Tura Peak, Khasi Hills	Indo-Burma

Name	Family	Habit	Voucher number	Nativness	Distribution	
					Meghalaya	Worldwide
<i>Homalium schlichii</i> Kurz*	Salicaceae	T	North-Eastern Hill University, Haridasan I.c. (?), Balphakram, Garo Hills	NE	Balphakram, Jarain	Meghalaya
<i>Salix psilostigma</i> Andersson	Salicaceae	Sh	ASSAM, AH Mir, 90315 (08.v.2016) Swer, East Khasi Hills.	E	Jowai, Swer, Nongkrem, Phudjuad, Mawsynram	Indo-Burma
<i>Sarcosperma arboreum</i> Hook.f.	Sapotaceae	T	ASSAM, A.H. Mir, 90356 (19. ix.2015) Cherrapunjee, East Khasi Hills	E	Mawsynram, Cherrapunjee, Jarain, Tura, Balphakram	Indo-Burma
<i>Sarcosperma griffithii</i> Hook.f. ex C.B.Clarke	Sapotaceae	T	ASSAM, A.H. Mir, 90418 (28. viii.2015) Cherrapunjee, East Khasi Hills	E	Raliang, Jowai, Lumshnong, Cherrapunjee, Mawsynram, Laitryngew, Mawkyrwat, Hilland, Tynnai, Jarain, Amlarem, Nongthlang, Pynursla, Phlangmawsyprat, Nongstoin, Balphakram	Eastern Himalaya and Indo-Burma
<i>Xantolis assamica</i> (C.B.Clarke) P.Royen*	Sapotaceae	T	ASSAM, J. Joseph 45115 (14. iii.1966), Umling, Ri-Bhoi	E	Umling	Northeastern India
<i>Xantolis hookeri</i> (C.B.Clarke) P.Royen*	Sapotaceae	T	North-Eastern Hill University, Haridasan I.c. (?), Balphakram, Garo Hills	E	Lailad, Balphakram	Eastern Himalaya and Burma
<i>Saurauia punduana</i> Wall.	Saurauiaceae	T	ASSAM, A.H. Mir, 90382 (05. iv.2014) Laitkynsew, East Khasi Hills	E	Laitkynsew, Mawiong, Wakhen, Cherrapunjee, Mawsynram, Nokrek	Indo-Burma
<i>Illicium griffithii</i> Hook.f. & Thomson	Schisandraceae	T	ASSAM, A.H. Mir, 88684, East Khasi Hills	E	Nonglynkien, Tynnai, Mawkyrwat, Lynshing, Laitryngew, Cherrapunjee, Mawsynram	Indo-Burma and Bhutan
<i>Smilax myrtillos</i> A.DC.	Smilacaceae	Sh	ASSAM, A.H. Mir, 0332 (20.x.2016) Laitrengew, East Khasi Hills	E	Nongstoin, Pongtung, Jowai, Amlarem, Cherrapunjee, Lynshing, Tyrsad, Nokrek, Jakrem, Pynursla	Bhutan and Indo-Burma
<i>Reevesia wallichii</i> R.Br.	Sterculiaceae	T	ASSAM, A.H. Mir, 88696 (15. ix.2015) Cherrapunjee, East Khasi Hills	E	Cherrapunjee, Laitryngew, Mawmluh, Mawkasain, Mawsynram, Nongstoin, Mawkyrwat	Indo-Burma
<i>Sterculia hamiltonii</i> (Kuntze) Adalb.	Sterculiaceae	T	ASSAM, A.H. Mir, 01059 (03.v.2017) Lawbah, East Khasi Hills	E	Nokrek, Cherrapunjee, Mawsynram, Lyngiong, Balphakram	Eastern Himalaya and Indo-Burma
<i>Stixis suaveolens</i> (Roxburgh) Pierre	Stixaceae	Cl	ASSAM, AH Mir, 90453 (25.ix.2015) Pongtung, East Khasi Hills	E	Tharia, Pongtung, Nongsteng, Balpakram, Nokrek	Indo-Burma
<i>Bruinsmia polysperma</i> (C.B.Clarke) Steenis*	Styracaceae	T	K (image!), K000728941, J.D. Hooker s.n. (?) Khasi Hills	E	Umsaw	Indo-Burma
<i>Tectaria subconfluens</i> Ching*	Tectariaceae	H	K (image!), K001080779, C.B. Clarke (? .xi.1872), Umwai, Khasia	NE	Umwai	Meghalaya
<i>Camellia cauduca</i> Cl. ex Brandis	Thaeaceae	Sh	ASSAM, A.H. Mir, 90399 (22. xi.2015) Lyngiong, East Khasi Hills	NE	Jowai, Mawlai, Pongtung, Raliang, Cherrapunjee, Nongstoin, Mairang, Nongbri, Lyngiong, Mawkyrwat, Pynursla, Wakhen, Jarain, Mawphlang, Laitryngew, Lawbah, Phlanwangbroi	Meghalaya
<i>Camellia kissii</i> Wall.	Theaceae	Sh	ASSAM, AH Mir, 01018 (10.xii.2016) Parkseh, East Khasi Hills	E	Jarain to Umngat, Mawsynram, Jowai, Nokrek, lalong, Mawsynram, Mawkyrwat, Phudjuad, Nongstoin, Lynshing, Lyngiong, Tyrsad, Weilo, Pynursla, Nokrek, Balphakram, Raitong, Mawmluh, Nokrek	Meghalaya

Name	Family	Habit	Voucher number	Nativness	Distribution	
					Meghalaya	Worldwide
<i>Schima khasiana</i> Dyer	Theaceae	T	ASSAM, A.H. Mir, 90480 (03.vii.2015) Laitryngew, East Khasi Hills	E	Shillong peak, Sohrarim, Jowai, Mawlai, Pongtung, Raliang, Nongbri, Cherrapunjee, Nongstoin, Mairang, Lyngiong, Mawkyrwat, Pynursla, Wakhen, Jarain, Mawphlang, Lawbah, Phlanwangbroi	Indo-Burma and Northeastern India
<i>Gordonia dipterosperma</i> Kurz	Theaceae	T	ASSAM, A.H. Mir, 90355 (19.xi.2015) Mawsynram, East Khasi Hills	E	Cherapunjee, Laitryngew, Nongsteng, Mawsynram, Mawrapat, Mawkasain.	Bhutan and Northeastern India
<i>Pyrenaria khasiana</i> R.N.Paul*	Theaceae	T	CAL, S. Kurz 161A (?), Khasi Hills and Brahmaputra plains	E	Khasi Hills (Location not specified).	Indo-Burma
<i>Pyrenaria cherrapunjeana</i> Mir	Theaceae	T	ASSAM, A.H. Mir, 02245 (15.v.2017) Mawmluh, East Khasi Hills	NE	Cherrapunjee, Mawsynram, Sohrarim.	Meghalaya
<i>Thelypteris didymochlaenoides</i> (Ching) Ching*	Thelypteridaceae	H	Specimen not seen	NE	Locality not known	Meghalaya
<i>Aquilaria khasiana</i> Hallier f.	Thymelaeaceae	T	ASSAM, A.H. Mir, 90340 (21.ix.2016) Mawkasain, East Khasi Hills.	E	Mawsynram, Umsaw,	Indo-Burma
<i>Daphne involucrata</i> Wall.	Thymelaeaceae	Sh	ASSAM, A.H. Mir, 90376 (04.ii.2015) Mawmluh, East Khasi Hills	E	Mawsynram, Cherrapunjee, Mawkyrwat, Mawmluh, Lynshing.	Indo-Burma
<i>Daphne sureil</i> W.W. Smith & Cave*	Thymelaeaceae	Sh	ASSAM, U. Kanjilal 2373 (01.viii.1913), Upper Shillong, Khasi Hills	E	Jarain, Jowai, Garampani, Ummulong, Mynso, Mawsynram, Lawbah, Mawmsai	Eastern Himalaya and Indo-Burma
<i>Ulmus lanceifolia</i> Roxb. ex Wall.*	Ulmaceae	T	ASSAM, R.N. De 19979 (10.xii.1940) Rangengree, Garo Hills	E	Lailad, Umling	Eastern Himalaya and Indo-Burma
<i>Elatostemma sikkimensis</i> Clarke.	Urticaceae	H	ASSAM, G.K. Deka 3316 (04.vi.1963) Near Crinoline, Khasi Hills	E	Cherrapunjee, Jowai, Jarain, Mawkyrwat, Mawsynram	Indo-Burma
<i>Clerodendrum hastatum</i> (Roxb.) Lindl.	Verbenaceae	Sh	ASSAM, B. Singh, 118413 (03.ii.2009) 118233A, Garo Hills	E	Umling, Nokrek, Umsemlem, Nokrek	Indo-Burma
<i>Leea compactiflora</i> Kurz	Vitaceae	T	ASSAM, B. Singh, 114900 (07.x.2007) Rongsinggri, Garo Hills	E	Tura, Rongsinggri	Eastern Himalaya and Indo-Burma
<i>Tetrastigma obovatum</i> Gagnep.	Vitaceae	Cl	ASSAM, A.H. Mir, 90386 (23.viii.2016) Umtong, East Khasi Hills	E	Khongshong to Raliang, Lynshing, Lyngiong, Cherrapunjee, Mawsynram, Laitsohum, Mairang, Pynndengnongbri, Mawkyrwat, Nongstoin	Indo-Burma
<i>Amomum jainii</i> S. Tripathi & V. Prakash	Zingiberaceae	H	ASSAM, D.K. Roy 125556 (26.iv.2012) Balpakram, Garo Hills	E	Baghmara Reserve forest	Northeastern India
<i>Amomum deorianum</i> D.P.Dam & N.Dam*	Zingiberaceae	H	ASSAM, N.C. Deori & D. P. Dam 51766, East of Dwaki, Jaintia Hills	NE	Dawki	Meghalaya
<i>Amomum garoense</i> S.Tripathi & V.Prakash*	Zingiberaceae	Sh	CAL, S. Tripathi 20834 (14.v.1997), Baghmara, Garo Hills	NE	Baghmara Reserve forest	Meghalaya.
<i>Amomum vermanum</i> S. Tripathi & V.Prakash*	Zingiberaceae	H	CAL, S. Tripathi 20835 (10.v.1997), Baghmara, Garo Hills	NE	Cherrapunjee	Meghalaya.
<i>Boesenbergia hamiltonii</i> Mood, S.Dey & L.M.Prince*	Zingiberaceae	H	ASSAM, Dey NU53 (? .vii.2009), Nongpoh, RiBhoi District	NE	Nongpoh, Balphakram	Meghalaya
<i>Boesenbergia meghalayensis</i> Aishwarya & M. Sabu*	Zingiberaceae	H	CAL, Sanoj E. 95637 (18.viii.2004), Nortiang, Khasi Hills	NE	Nartiang	Meghalaya
<i>Caulokaempferia linearis</i> (Wall.) K.Larsen	Zingiberaceae	H	ASSAM, AH Mir, 90320 (28.vii.2016) Mawmluh, East Khasi Hills.	E	Mawmluh, Mawmsai, Pynursla	Northeastern India
<i>Caulokaempferia secunda</i> (Wall.) K. Larsen	Zingiberaceae	H	ASSAM, AH Mir, 00765 (05.v.2016) Mawsynram, East Khasi Hills	E	Nokrek, Balphakram	Eastern Himalaya and Indo-Burma
<i>Curcuma prakasha</i> S.Tripathi	Zingiberaceae	H	S. Tripathi, 2001. Nord. J. Bot. 21: 549.550.	NE	GaroHills-Baghmara	Meghalaya
<i>Globba multiflora</i> Wall. ex Baker in J.D.Hooker*	Zingiberaceae	H	ASSAM, G.K.Deka 21981 (22.viii.1946), Umsaw, Ribhoi	E	Jowai, Tura Peak, Umsaw	Northeastern India, Indo-Burma
<i>Hedychium forrestii</i> Diels*	Zingiberaceae	H	ASSAM, N.P. Balakrishnan 46119 (16.viii.1996), Ummulong, Jowai	E	Mynso, Jarain, Jowai, Garampani, Raliang, Ummulong	Indo-Burma

Name	Family	Habit	Voucher number	Nativness	Distribution	
					Meghalaya	Worldwide
<i>Hedychium hookeri</i> C.B. Clarke ex Baker*	Zingiberaceae	H	K (image!), K000640479, s.coll. 1350 (27.vi.1850) Kalapani, Khasia Hills	E	Kala Panee, Ri-Bhoi	Northeastern India
<i>Hedychium calcaratum</i> A.S.Rao & D.M. Verma	Zingiberaceae	H	ASSAM, G.K.Deka 10134 B.C (27.vii.1957), Jowai (60 miles from Shillong), Meghalaya	NE	Jowai	Meghalaya
<i>Hedychium elwesii</i> Baker	Zingiberaceae	H	K (image!), K000640501 H.J.Elwes, 44675, (08.ix.1886), Shillong	NE	Bishop falls- Shillong	Meghalaya
<i>Hemiorchis rhodorrhachis</i> K. Schum.*	Zingiberaceae	H	K (image!), K000640564, s. coll. (? .iii.1888), Khasi Hills	E	Tharia, Nokrek.	Eastern Himalaya, Burma and Bangladesh
<i>Zingiber bipinianum</i> D.K. Roy, D.Verma, Talukdar & Dutta Choud.	Zingiberaceae	H	ASSAM, DK Roy 130318 (11.vi.2014) Balpakram, Garo Hills	NE	Balphakram	Meghalaya
<i>Zingiber roseum</i> (Roxb.) Roscoe	Zingiberaceae	H	ASSAM, AH Mir, 90381 (05.v.2016) Laitkynsew, East Khasi Hills	E	Umsaw	Indo-Burma.
<i>Zingiber meghalayense</i> Kumar, Mood, Singh & Sinha*	Zingiberaceae	H	ASSAM, R. Kumar, 104078 (26.iii.2011), Nokrek	NE	Tura Peak	Meghalaya

Legend: T—tree | Sh—shrub | Cl—climber | P—parasite | H—herb | E—Endemic | NE—Narrowly Endemic | species marked with asterisk (*) could not be collected during the survey and have been included based on secondary sources; Specimen not seen- voucher specimens that we could not locate in the herbaria at Botanical Survey of India, Eastern Regional Centre, Shillong and Department of Botany, North-Eastern Hill University and in digital form.





The Journal of Threatened Taxa (JoTT) is dedicated to building evidence for conservation globally by publishing peer-reviewed articles online every month at a reasonably rapid rate at www.threatenedtaxa.org. All articles published in JoTT are registered under [Creative Commons Attribution 4.0 International License](https://creativecommons.org/licenses/by/4.0/) unless otherwise mentioned. JoTT allows unrestricted use, reproduction, and distribution of articles in any medium by providing adequate credit to the author(s) and the source of publication.

ISSN 0974-7907 (Online) | ISSN 0974-7893 (Print)

September 2019 | Vol. 11 | No. 12 | Pages: 14471–14630
Date of Publication: 26 September 2019 (Online & Print)
DOI: 10.11609/jott.2019.11.12.14471-14630

www.threatenedtaxa.org

Article

Ornithophony in the soundscape of Anaikatty Hills, Coimbatore, Tamil Nadu, India
– Chandrasekaran Divyapriya & Padmanabhan Pramod, Pp. 14471–14483

Communications

A case study on the public knowledge and awareness of the Philippine Pangolin *Manis culionensis* (Mammalia: Pholidota: Manidae)
– Frances Mae Tenorio & Joselito Baril, Pp. 14484–14489

Winter food habits of the Common Palm Civet *Paradoxurus hermaphroditus* (Mammalia: Carnivora: Viverridae) in Patna Bird Sanctuary, India
– Khursid Alam Khan, Jamal Ahmad Khan, Khursheed Ahmad & Narendra Mohan, Pp. 14490–14495

Report of five interesting avian species from Durgapur ecoregion, West Bengal, India by citizen science effort
– Sagar Adhurya & Shantanu Bhandary, Pp. 14496–14502

Brief insight into the behavior, activity, and interspecific interactions of urban *Trimeresurus (Cryptelytrops) albolabris* (Reptilia: Squamata: Viperidae) vipers in Bangkok, Thailand
– Curt Hrad Barnes & Tyler Keith Knierim, Pp. 14503–14510

The distributional pattern of benthic macroinvertebrates in a spring-fed foothill tributary of the Ganga River, western Himalaya, India
– Vijay Prakash Semwal & Asheesh Shivam Mishra, Pp. 14511–14517

Seasonal vegetation shift and wetland dynamics in vulnerable granitic rocky outcrops of Palghat Gap of southern Western Ghats, Kerala, India
– Pathiyil Arabhi & Maya Chandrasekharan Nair, Pp. 14518–14526

A comprehensive checklist of endemic flora of Meghalaya, India
– Aabid Hussain Mir, Krishna Upadhaya, Dilip Kumar Roy, Chaya Deori & Bikarma Singh, Pp. 14527–14561

Shola tree regeneration is lower under *Lantana camara* L. thickets in the upper Nilgiris plateau, India
– Muneer Ul Islam Najar, Jean-Philippe Puyravaud & Priya Davidar, Pp. 14562–14568

Overcoming the pollination barrier through artificial pollination in the Wild Nutmeg *Knema attenuata* (Myristicaceae), an endemic tree of the Western Ghats, India
– Murugan Govindakurup Govind, Koranapallil Bahuleyan Rameshkumar & Mathew Dan, Pp. 14569–14575

Short Communications

The first photographic record of the Red Panda *Ailurus fulgens* (Cuvier, 1825) from Lamjung District outside Annapurna Conservation Area, Nepal
– Ganesh Ghimire, Malcolm Pearch, Badri Baral, Bishnu Thapa & Rishi Baral, Pp. 14576–14581

Partner



Member



Dhole *Cuon alpinus* (Mammalia: Carnivora: Canidae) rediscovered in Bardia National Park, Nepal
– Shailendra Kumar Yadav, Babu Ram Lamichhane, Naresh Subedi, Ramesh Kumar Thapa, Laxman Prasad Poudyal & Bhagawan Raj Dahal, Pp. 14582–14586

Observations of Brown Mongoose *Herpestes fuscus* (Mammalia: Carnivora: Herpestidae) in the wet evergreen forests of the Western Ghats, India
– Vignesh Kamath & Kadaba Shamanna Seshadri, Pp. 14587–14592

Further studies on two species of the moth genus *Paralebeda Aurivillius* (Lepidoptera: Bombycoidea: Lasiocampidae) from northwestern India
– Amritpal Singh Kaleka, Devinder Singh & Sujata Saini, Pp. 14593–14598

The genus *Grewia* (Malvaceae: Grewioideae) in Andaman & Nicobar Islands, India with a conservation note on the endemic *G. indandamanica*
– K.C. Kishor & Mayur D. Nandikar, Pp. 14599–14605

Three grasses (Poaceae), additions to the flora of Andhra Pradesh, India
– Anil Kumar Midigesi & Boyina Ravi Prasad Rao, Pp. 14606–14611

Ethnobotanical survey of indigenous leafy vegetables consumed in rural areas of Terai-Dooars region of West Bengal, India
– Mallika Mazumder & Anup Kumar Sarkar, Pp. 14612–14618

Australasian sequestrate Fungi 20: *Russula scarlatina* (Agaricomycetes: Russulales: Russulaceae), a new species from dry grassy woodlands of southeastern Australia
– Todd F. Elliott & James M. Trappe, Pp. 14619–14623

Notes

The Himalayan Crestless Porcupine *Hystrix brachyura* Linnaeus, 1758 (Mammalia: Rodentia: Hystricidae): first authentic record from Bangladesh
– Mohammad Ashraf Ul Hasan & Sufia Akter Neha, Pp. 14624–14626

A new distribution record of *Asplenium scalare* Rosenst. (Aspleniaceae) in India
– Periyasamy Vijayakanth, Jaideep Mazumdar, S. Sahaya Sathish, Veluchamy Ravi & Ramachandran Kavitha, Pp. 14627–14628

Response & Reply

Response to spiders of Odisha: a preliminary checklist additions to the spider checklist of Odisha
– John T.D. Caleb, Pp. 14629–14630

Reply to response: spiders of Odisha
– Sudhir Ranjan Choudhury, Manju Siliwal & Sanjay Keshari Das, Pp. 14630

Publisher & Host

