

# Ichthyofaunal diversity of the Omo-Turkana basin, East Africa, with specific reference to fish diversity within the limits of Ethiopian waters

Mulugeta Wakjira<sup>1,3</sup> & Abebe Getahun<sup>2</sup>

<sup>1</sup>Jimma University, College of Natural Sciences, Department of Biology, P.O. Box 378, Jimma, Ethiopia

<sup>2</sup>Addis Ababa University, College of Natural Sciences, Department of Zoological Sciences, P.O. Box 1176, Addis Ababa, Ethiopia

<sup>3</sup>Corresponding author. E-mail: [enku2005@yahoo.com](mailto:enku2005@yahoo.com)

**Abstract:** The freshwaters of the East African nation of Ethiopia are divided into nine main drainage basins. One of these, the Omo-Turkana basin, spans a large part of southwestern Ethiopian highlands and northern Kenya, and consists of the Omo-Gibe (or simply, Omo) River and a northern portion of Lake Turkana. Despite some development activities, including proposed dam construction with potential impacts on ichthyofaunal diversity, the Ethiopian part of the basin generally lacks comprehensive study or full scientific documentation. During the current surveys 31 species were identified from the lower Omo River and Ethiopian part of Lake Turkana, with some new records for the basin. The Omo River system was found to be richer in species while Lake Turkana has a higher abundance. Ichthyofaunal diversity within Ethiopian waters is specifically addressed, and an annotated checklist for native species of the basin is provided.

**Key words:** annotated checklist; Lake Turkana; Omo-Gibe River; freshwater fishes; new records; scientific documentation

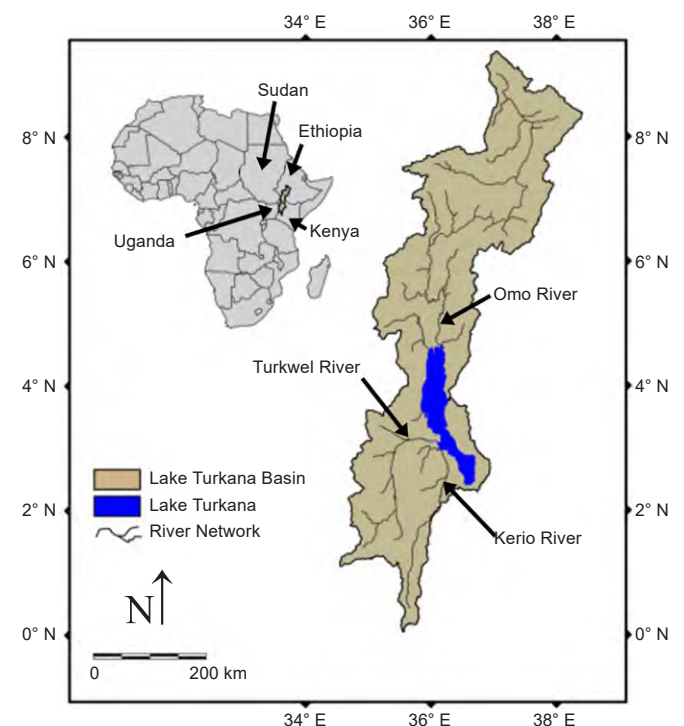
## INTRODUCTION

Ethiopia's inland waters (lakes, rivers and streams) are in nine main drainage basins situated within major physiographic units. One of these, the Omo-Turkana basin, spans a large part of the southwestern Ethiopian highlands and northern Kenya (FEIBEL 2011; VELPURI et al. 2012) (Figure 1).

## Historical overview

The basin was first explored for its ichthyofaunal diversity in the second half of the 19<sup>th</sup> century during Dr. Donald Smith's Lake Turkana expedition (1894–1895). Eight species, with one new description, were identified from the Smith Lake Turkana collection (GÜNTHER 1896). In the early 20<sup>th</sup> century, five species were identified from the Omo River collections of R. Neumann and C. von Erlanger

(BOULENGER 1903a). A few years later, 14 species from the middle to upper Omo River, and five species from northeastern Lake Turkana were identified from the collections of W. N. McMillan and Zaphiro (BOULENGER 1906). At the same time, PELLEGRIN (1905) identified four species from Lake Turkana in the collections of Maurice de Rothschild from 1904–1905. The first organized expedition to the Omo-Turkana basin was undertaken by Cambridge University in 1930–31 (WORTHINGTON 1931, 1932; WORTHINGTON & RICHARDO 1936) as part of its East African Great Lakes expedition. This was followed by a French multidisciplinary scientific expedition to the lower Omo River valley (La mission scientifique de l'Omo, 1932–1933). PELLEGRIN (1935) identified 15 species referable to



**Figure 1.** Map of the spatial extent of Omo-Turkana Basin (Source: VELPURI et al. 2012).

13 genera and seven families from that expedition's fish collections, of which two species, *Aplocheilichthys jeanneli* and *Barbus arambourgi* (now *Enteromius arambourgi*), and one subspecies, *Brycinus nurse nana*, were described. Of these 15 species, 12 species were identified from the Omo River (Delta) while three species were from Lake Turkana. The East African Freshwater Fisheries Research Organization (EAFPRO), based in Uganda, also visited Lake Turkana and identified ten species (HAMBLYN 1962). A review by TEDLA (1973) listed 23 species for the Omo-Turkana system, the majority of which were from the Omo River system. The British Overseas Development Administration's Lake Turkana Project (1972–1975) laid the foundation for much contemporary knowledge of Lake Turkana's ichthyofaunal diversity (HOPSON 1982). That comprehensive study also generated information on the lake's limnology and fisheries. The project report, combining original data and review of past work, listed 48 species for the lake with the descriptions of three new ones (HOPSON & HOPSON 1982). A subsequent Norwegian project (1985–1988), focused mainly on the lake's fisheries (KOLDING 1989) and limnology (KÄLLQVIST et al. 1988). The Joint Ethio-Russian Biological Expedition (JERBE) listed 53 species in the Omo River basin and 72 species in the entire Omo-Turkana system (BARON et al. 1997). A combination of these preceding studies and other reviews (ROBERTS 1975; KOLDING 1989; LÉVÊQUE et al. 1991) results in 74 valid species for the entire Omo-Turkana system. GOLUBTSOV & DARKOV (2008) later increased the number of species for the Omo-Turkana system to 76–79, with some pending taxonomic and identification uncertainties of a few species.

### Diversity measurements

Global biological diversity is measured at various scales. Alpha diversity measures species richness at a single locality or in a community, whereas beta diversity is a measure of the amount of turnover or heterogeneity in species composition along environmental gradients between localities or communities (WHITTAKER 1972). Alpha diversity can be used to reflect how finely species are dividing ecological resources, whereas beta diversity can reflect the extent of habitat selection or specialization (JOST et al. 2011). Measures of taxonomic composition and variation as one or more of the components of global diversity have important applications in setting conservation priorities or evaluating regional conservation plans. In ecology, they can also be used to study the homogenizing or diversifying effects of human activities, natural disturbance, or spatial variability of environmental conditions (OLDEN 2006; VELLEND et al. 2007). Studies pertaining to these diversity parameters do not exist for the Omo-Turkana basin except for the scant reports on species occurrences. Moreover, many previous assessments of fish diversity in the basin largely dealt with the main lake in Kenya. Despite some development activities and proposed dams in the Omo basin (AVERY 2010) and their potential impacts on biodiversity, the Ethiopian

part of the basin generally lacks a comprehensive study or scientific documentation of its ichthyofauna. Such a lack of scientific documentation renders recommendations and/or implementation of appropriate management and conservation measures, as well as future appraisal of impacts, highly problematical. Therefore, the purposes of this study are to:

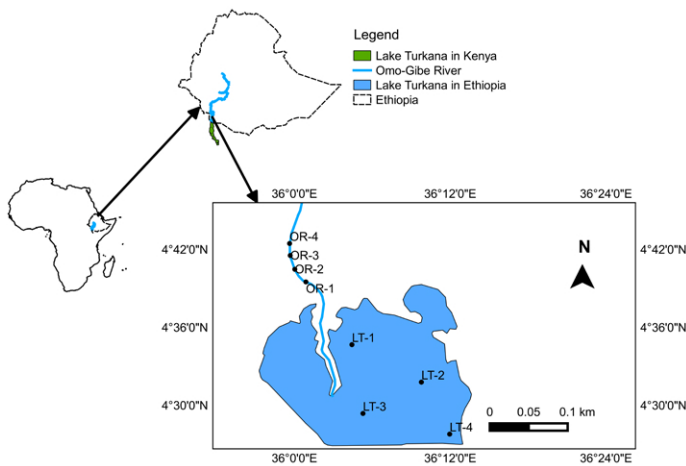
- Assess alpha and beta diversity indices as well as the species richness of the ichthyofauna of the lower Omo River and Ethiopian part of Lake Turkana,
- Develop a comprehensive ichthyofaunal checklist for the region and an artificial identification key in an effort to document the basin's freshwater fish diversity.

This study forms part of a broader research project on the ichthyofaunal community structure, feeding ecology of dominant fish species, and fisheries socioeconomics of these water bodies. As such, it is hoped that this study will contribute to a comprehensive understanding of the basin's fish fauna as a baseline for its conservation and sustainable fishery.

## MATERIALS AND METHODS

### Study sites

Fish specimens were obtained from the Ethiopian part of the Omo-Turkana basin (Figure 2). The Omo basin is part of the large Turkana system with a catchment area of 131,000–145,500 km<sup>2</sup> covering southwestern Ethiopia and northern Kenya (FEIBEL 2011; VELPURI et al. 2012). The Turkana system essentially consists of the Omo-Gibe (or simply, Omo) River and Lake Turkana. However, the basin also encompasses the smaller Turkwell and Kerio River basins on the southwestern shore of the lake in Kenya, and intermittent streams such as the Kalakol and Kataboi on the western Kenyan shore, and the Kibbish on the northwestern shore in Ethiopia (FERGUSON & HARBOTT 1982). In Ethiopia, the basin consists of the Omo River extending north upstream from the shore of the lake to the southwestern Ethiopian highlands, and a portion of Lake Turkana. The Ethiopian part of Lake Turkana is estimated at 1.3% (98 km<sup>2</sup>) of the entire lake area (≈ 7560 km<sup>2</sup>) (FAO 2003). The Omo River basin makes up 52–58% of the catchment area of the entire Turkana system and supplies 80–90% of the total inflow to the lake (FERGUSON & HARBOTT 1982; AVERY, 2010; UNEP 2010). It receives an annual precipitation of up to 2,000 mm (UNEP 2010) although the mean annual rainfall could be as low as 350 mm in the lower Omo River Valley near the lake (EEPSCO 2009). The principal stream, the Omo River, has its sources in the southwestern Ethiopian highlands at an elevation of about 2,200 m above sea level (a.s.l.). Its major tributaries, in upstream to downstream order, include Gibe, Gilgel-Gibe, Gojeb, Amara, Alanga, Denchiya, Mui, Zigina-Shoshuma, Mantsa and Usno (with sub-tributaries Mago and Neri). It is 760 km long, traverses Oromia and Southern Nations Nationalities and Peoples (SNNP) regions of Ethiopia, and ultimately flows into Lake Turkana at 365



**Figure 2.** Sampling sites on the lower Omo River (OR1–OR4) and the Ethiopian part of Lake Turkana (LT1–LT4); the reference datum used for geographic coordinates is WGS84.

m a.s.l. (CSA 2009). Biogeographically, the Omo-Turkana basin belongs to the Nilo-Sudanic freshwater ichthyofaunal province (ROBERTS 1975; PAUGY 2010).

Four sampling sites were established at each of two major sampling localities: the lower reaches of the Omo River 50–60 km upstream of its delta, and the Ethiopian part of Lake Turkana (Figure 2). Site selection was based on accessibility and sampling safety. The Omo River sites consisted predominantly of pools with sand or mud substrates whereas the Lake Turkana sites had a largely muddy substrate. Geographic coordinates and related features of the sampling sites are summarized in Table 1.

### Data collection

Permissions to sample in the study areas were obtained from local government administrations and fish samples were collected during two dry and two wet seasons between January 2013 and September 2014 (Table 1). Dry season sampling was conducted during periods of the year when there was no rainfall whereas wet season sampling was undertaken immediately following decline of a prolonged rainfall. A combination of monofilament and multifilament gillnets were used for sampling. The gillnets had stretched mesh sizes of 8–44 cm, a panel length of 100 m and a width of 1 m per mesh size. Four sets of gillnets, two parallel and two perpendicular to the shore, were set

at a subsurface level at each sampling site. Hook and line, traps, and cast nets supplemented the gillnet sampling especially in inshore areas. Some additional specimens were provided by local artisanal fishers. Fish specimens were fixed in 10% formalin. Identification was made to species level following relevant literature (e.g., BOULENGER 1909, 1911, 1915, 1916; TEDLA 1973; HOPSON & HOPSON 1982; SEEGER et al. 2003; HABTESELASSIE 2012). Voucher specimens were deposited in the Zoological Natural History Museum (ZNHM) of Addis Ababa University, Ethiopia (Table 2). Unless noted otherwise, the classification of species follows NELSON (2006).

### Data analysis

Shannon diversity ( $H'$ ) and evenness ( $J'$ ) indices (MAURER & MCGILL 2011) were computed as measures of the alpha diversity for the lower Omo River and the Ethiopian part of Lake Turkana using the following formula:

$$H' = -\sum_{i=1}^S P_i \times \ln(P_i); J' = H'/\ln(S)$$

Where,

$P_i$  = Proportion of abundance of species  $i$

$S$  = Species richness

Rank order abundance plots were generated as the natural logarithm of abundance values versus the abundance rank order for further assessment of evenness. Differences in the parameters of alpha diversity measures between the river and the lake samples were compared using a randomization (permutation) test (MAGURRAN 1988; SOLOW 1993). Whittaker's beta diversity index ( $\beta_w$ ) (WHITTAKER 1972), a robust index (WILSON & SHMIDA 1984), was used to assess the rate of species turnover between the lower Omo River and Lake Turkana samples, and is calculated as:

$$\beta_w = \left(\frac{S}{\alpha}\right) - 1$$

Where,

$S$  = total number of species of the habitats

$\alpha$  = average species richness per habitat

An individual-based rarefaction analysis was performed to standardize diversity comparison between the two systems (MAGURRAN 2004; GOTELLI & COLWELL 2011). All statistical analyses were carried out in PAST version 3.08 (HAMMER et al. 2001). Ultimately, data obtained during the

**Table 1.** Sampling sites and sampling seasons on the lower Omo River (OR1–OR4) and the Ethiopian part of Lake Turkana (LT1–LT4), including altitude above sea level (Alt, meters), water depth (Depth, meters), and geographic coordinates.

Site	Alt (m)	Depth (m)	Latitude N	Longitude E	Sampling seasons and dates			
					Dry1 (Jan. 13)	Wet1 (Nov. 13)	Dry2 (Apr. 14)	Wet2 (Sep. 14)
OR1	362	6.1	04°39'29.88"	036°00'52.56"	9–10	1–2	1–2	15–16
OR2	372	5.3	04°40'28.20"	036°00'01.44"	11–12	3–4	3–4	17–18
OR3	370	7.5	04°41'31.92"	035°59'40.20"	13–14	5–6	5–6	19–20
OR4	367	4.8	04°42'27.36"	035°59'37.32"	15–16	7–8	7–8	21–22
LT1	359	2.1	04°34'40.08"	036°04'25.32"	17–18	9–10	9–10	23–24
LT2	357	1.7	04°31'46.92"	036°09'46.44"	19–20	11–12	11–12	25–26
LT3	359	2.4	04°29'22.20"	036°05'16.44"	21–22	13–14	13–14	27–28
LT4	357	2.8	04°27'46.80"	036°11'57.12"	23–24	15–16	15–16	29–30

**Table 2.** List of fish species collected in the lower Omo River (OR1–OR4) and the Ethiopian part of Lake Turkana (LT1–LT4); family-group name for Arapaimidae is according to Laan et al. (2014); “X” stands for species sampled in a particular locality; voucher numbers of the specimens deposited in the Zoological Natural History Museum (ZNHM) of Addis Ababa University are in the last column.

Order/family/species	OR1	OR2	OR3	OR4	LT1	LT2	LT3	LT4	Voucher
<b>POLYPTERIFORMES</b>									
<b>Polypteridae</b>									
<i>Polypterus bichir</i> Lacepède, 1803						X			ZNHM-F-0001
<i>Polypterus senegalus</i> Cuvier, 1829			X						ZNHM-F-0002–3
<b>OSTEOGLOSSIFORMES</b>									
<b>Arapaimidae</b>									
<i>Heterotis niloticus</i> (Cuvier, 1829)							X		ZNHM-F-0004
<b>Mormyridae</b>									
<i>Mormyrus caschive</i> Linnaeus, 1758		X			X				ZNHM-F-0005–6
<i>Mormyrus kannume</i> Forsskål, 1775				X					ZNHM-F-0007
<i>Mormyrops anguilloides</i> (Linnaeus, 1758)			X	X					ZNHM-F-0008–9
<i>Hyperopisus bebe</i> (Lacepède, 1803)			X	X					ZNHM-F-0010–12
<i>Pollimyrus petherici</i> (Boulenger, 1898)		X		X					ZNHM-F-0013–14
<b>CHARACIFORMES</b>									
<b>Alestidae</b>									
<i>Hydrocynus vittatus</i> Castelnau, 1861						X	X		ZNHM-F-0015–18
<i>Hydrocynus forskahlii</i> (Cuvier, 1819)		X			X				ZNHM-F-0019–20
<i>Alestes baremoze</i> (Joannis, 1835)	X				X				ZNHM-F-0021–22
<i>Brycinus nurse</i> (Rüppell, 1832)	X					X			ZNHM-F-0023–24
<b>Citharinidae</b>									
<i>Citharinus citharus intermedius</i> Worthington, 1932	X	X				X		X	ZNHM-F-0025–30
<b>Distichodontidae</b>									
<i>Distichodus nefasch</i> (Bonnaterre, 1788)	X	X						X	ZNHM-F-0031–32
<b>CYPRINIFORMES</b>									
<b>Cyprinidae</b>									
<i>Labeo horie</i> Heckel, 1847			X		X				ZNHM-F-0033–34
<i>Labeo niloticus</i> (Linnaeus, 1758)	X		X				X		ZNHM-F-0035–38
<i>Labeo coubie</i> Rüppell, 1832								X	ZNHM-F-0039
<b>SILURIFORMES</b>									
<b>Auchenoglanididae</b>									
<i>Auchenoglanis biscutatus</i> (Geoffroy St. Hilaire, 1809)		X					X		ZNHM-F-0040–41
<i>Auchenoglanis occidentalis</i> (Valenciennes, 1840)				X	X				ZNHM-F-0042–43
<b>Clariidae</b>									
<i>Clarias gariepinus</i> (Burchell, 1822)		X							ZNHM-F-0044–45
<b>Bagridae</b>									
<i>Bagrus bajad</i> (Forsskål, 1775)	X					X			ZNHM-F-0046–47
<i>Bagrus docmak</i> (Forsskål, 1775)		X			X				ZNHM-F-0048–49
<b>Claroteidae</b>									
<i>Chrysichthys turkana</i> Hardman, 2008			X					X	ZNHM-F-0050–52
<b>Malapteruridae</b>									
<i>Malapterurus minjiriya</i> Sagua, 1987			X						ZNHM-F-0053
<b>Mochokidae</b>									
<i>Synodontis filamentosus</i> Boulenger, 1901				X	X				ZNHM-F-0054–55
<i>Synodontis schall</i> (Bloch & Schneider, 1801)	X	X			X	X		X	ZNHM-F-0056–62
<b>Schilbeidae</b>									
<i>Schilbe mystus</i> (Linnaeus, 1758)		X							ZNHM-F-0063
<i>Schilbe uranoscopus</i> Rüppell, 1832	X				X	X			ZNHM-F-0064–67
<b>PERCIFORMES</b>									
<b>Cichlidae</b>									
<i>Oreochromis niloticus</i> (Linnaeus, 1758)	X						X		ZNHM-F-0068–69
<b>Latidae</b>									
<i>Lates niloticus</i> (Linnaeus, 1758)		X		X	X	X	X		ZNHM-F-0070–76
<b>TETRAODONTIFORMES</b>									
<b>Tetraodontidae</b>									
<i>Tetraodon lineatus</i> Linnaeus, 1758							X		ZNHM-F-0077

present study was combined with a thorough review of past studies to develop an annotated checklist of valid native fish species for the entire Omo-Turkana Basin, and an artificial identification key to the species within the Ethiopian part of the basin is provided.

## RESULTS

### Species richness

During the present sampling, 4,386 fish specimens (lower Omo River,  $n = 823$ ; Lake Turkana,  $n = 3,563$ ) were collected. Altogether, 31 fish species (26 from river sites and 24 from the lake) in 22 genera, 17 families and seven orders were identified from the collections of both localities (Figures 3 and 4; Table 2).

Three species, *Mormyrus caschive*, *Labeo coubie*, and *Auchenoglanis biscutatus*, are new records for Lake Turkana, and two species, *Hydrocynus vittatus* and *Schilbe uranoscopus*, are new records for the Omo River. One species, *Synodontis filamentosus*, is a new record for both the Omo River and Lake Turkana.

### Species list

Phylum Chordata  
Class Actinopterygii  
Order Polypteriformes  
Family Polypteridae

#### ***Polypterus bichir*** Lacepède, 1803: Figure 3a

*Polypterus bichir* LACEPÈDE (1803): 340. — HABTESELASSIE (2012): 57; ESCHMEYER et al. (2016); FROESE & PAULY (2016).

*Polyptère bichir* GEOFFROY ST. HILAIRE (1802): 97. — GÜNTHER (1896): 218; BOULENGER (1909): 6; TEDLA (1973): 19; HOPSON & HOPSON (1982): 290; the generic name lacked latinization during the original description (ESCHMEYER et al. 2016).

*Polypterus bichir bichir* — GOSSE (1884):19; SEEGERS et al. (2003): 28.

#### Material examined: Table 2

Seventeen dorsal finlets; 67 scales in the lateral line; terminal mouth with small unicuspid teeth on jaws; body dark brown; sampled in the Ethiopian part of Lake Turkana.

#### ***Polypterus senegalus*** Cuvier, 1829: Figure 3b

*Polypterus senegalus* CUVIER (1829): 330. — BOULENGER (1905): 36; BOULENGER (1909): 14; HABTESELASSIE (2012): 56; ESCHMEYER et al. (2016); FROESE & PAULY (2016).

*Polypterus senegalus senegalus* — SEEGERS et al. (2003): 28.

#### Material examined: Table 2

Nine dorsal finlets; 57 scales in the lateral line; terminal mouth with small unicuspid teeth on jaws; body grayish; sampled in the lower Omo River.

Order Osteoglossiformes  
Family Arapaimidae

#### ***Heterotis niloticus*** (Cuvier, 1829): Figure 3c

*Sudis niloticus* CUVIER (1829): 328.

*Heterotis niloticus* — BOULENGER (1906): 559; BOULENGER (1909):

149; TEDLA (1973): 21; SEEGERS et al. (2003): 28; HABTESELASSIE (2012): 59; ESCHMEYER et al. (2016); FROESE & PAULY (2016).

*Heterotis niloticus* (Cuvier, 1929) — HOPSON & HOPSON (1982): 291.

#### Material examined: Table 2

Terminal mouth with unicuspid teeth; body scales large and strong; dorsal fin long, with more than 30 soft rays, positioned on the posterior body close to caudal; caudal fin round; sampled in the Ethiopian part of Lake Turkana.

### Family Mormyridae

#### ***Mormyrus caschive*** Linnaeus, 1758: Figure 3d

*Mormyrus caschive* LINNAEUS (1758): 327. — HABTESELASSIE (2012): 64; ESCHMEYER et al. (2016); FROESE & PAULY (2016).

*Mormyrus caschive* LINNAEUS (1757): 398. — BOULENGER (1909): 136.

#### Material examined: Table 2

Mouth terminal; proboscis-like snout straight, not curved downward; dorsal fin rays more than 75; laterally compressed; dark violet in color; sampled in the lower Omo River and the Ethiopian part of Lake Turkana; a new record for the latter.

#### ***Mormyrus kannume*** Forsskål, 1775: Figure 3e

*Mormyrus kannume* FORSSKÅL (1775): 74. — HOPSON & HOPSON (1982): 293; SEEGERS et al. (2003): 29; HABTESELASSIE (2012): 64; ESCHMEYER et al. (2016); FROESE & PAULY (2016).

#### Material examined: Table 2

Mouth terminal; proboscis-like snout slightly curved downward; dorsal fin rays fewer than 75; sampled in the lower Omo River.

#### ***Mormyrops anguilloides*** (Linnaeus, 1758): Figure 3f

*Mormyrus anguilloides* Linnaeus (1758): 327.

*Mormyrops anguilloides* — SEEGERS et al. (2003): 29; HABTESELASSIE (2012): 68; ESCHMEYER et al. (2016); FROESE & PAULY (2016).

*Oxyrhynchus deliciosus* LEACH (1818): 410.

*Mormyrops deliciosus* — BOULENGER (1905): 37; BOULENGER (1909): 32; TEDLA (1973): 20.

#### Material examined: Table 2

Mouth terminal; body laterally compressed; snout moderately long; thin white sheath covering snout including eye; head depressed; body not deep, anterior body with dark reddish wash; dorsal fin about as long as anal fin, both located near caudal; dark violet in color; sampled in the lower Omo River.

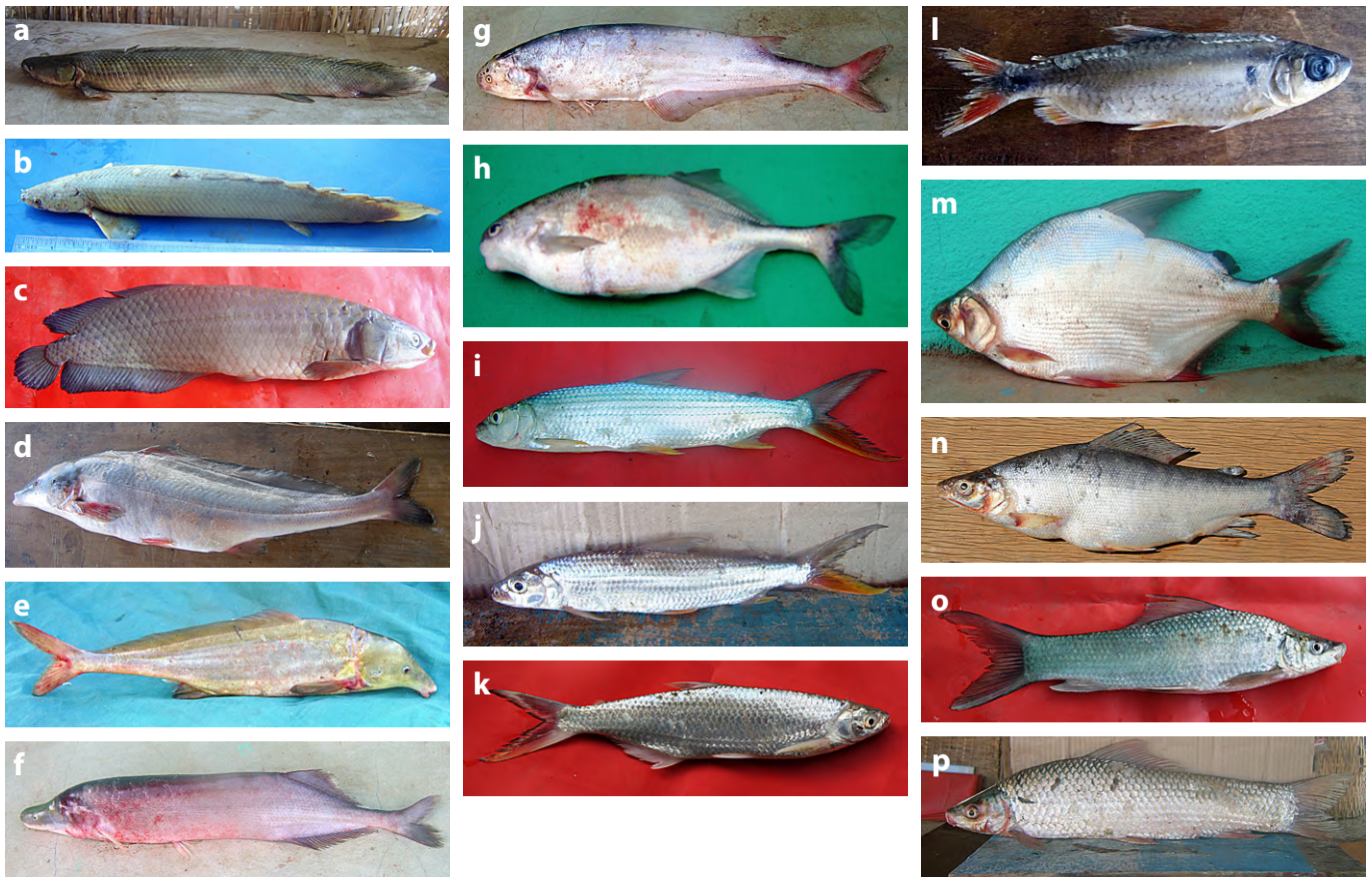
#### ***Hyperopisus bebe*** (Lacepède, 1803): Figure 3g

*Mormyrus bebe* LACEPÈDE (1803): 619.

*Hyperopisus bebe* — HOPSON & HOPSON (1982): 292; SEEGERS et al. (2003): 28; HABTESELASSIE (2012): 66; ESCHMEYER et al. (2016); FROESE & PAULY (2016).

#### Material examined: Table 2

Mouth terminal; snout round and short; thin white sheath covering snout including eyes; body laterally compressed; dorsal fin much shorter than anal fin; dorsal fin located posteriorly, near caudal; dark brown in color; sampled in the lower Omo River.



**Figure 3.** Species of fishes of the lower Omo River and Ethiopian part of Lake Turkana. **a.** *Polypterus bichir*, 73 cm SL, ZNHM-F-0001. **b.** *Polypterus senegalus*, 30 cm SL, ZNHM-F-0002–3. **c.** *Heterotis niloticus*, 60 cm SL, ZNHM-F-0004. **d.** *Mormyrus caschive*, 37 cm SL, ZNHM-F-0005–6. **e.** *Mormyrus kannume*, 41 cm SL, ZNHM-F-0007. **f.** *Mormyrops anguilloides*, 42 cm SL, ZNHM-F-0008–9. **g.** *Hyperopisus bebe*, 37 cm SL, ZNHM-F-0010–12; **h.** *Pollimyrus petherici*, 19 cm SL, ZNHM-F-0013–14. **i.** *Hydrocynus vittatus*, 33 cm SL, ZNHM-F-0015–18. **j.** *Hydrocynus forskahlii*, 38 cm SL, ZNHM-F-0019–20. **k.** *Alestes baremoze*, 35 cm SL, ZNHM-F-0021–22. **l.** *Brycinus nurse*, 11.3 cm SL, ZNHM-F-0023–24. **m.** *Citharus citharus intermedius*, 40 cm SL, ZNHM-F-0025–30. **n.** *Distichodus nefasch*, 40 cm SL, ZNHM-F-0031–32. **o.** *Labeo horie*, 31 cm SL, ZNHM-F-0033–34. **p.** *Labeo niloticus*, 48 cm SL, ZNHM-F-0035–38.

***Pollimyrus petherici*** (Boulenger, 1898): Figure 3h

*Marcusenius petherici* BOULENGER (1898): 7 — BOULENGER (1909): 82; BOULENGER (1916): 162.

*Pollimyrus petherici* — HABTESELASSIE (2012): 70; ESCHMEYER et al. (2016); FROESE & PAULY (2016).

**Material examined:** Table 2

Snout relatively short; dorsal fin originating well anterior of anal fin origin, relatively long with up to 36 rays; both dorsal and anal fins located near caudal; dorsal profile tends to be concave; sampled in the lower Omo River.

Order Characiformes

Family Alestidae

***Hydrocynus vittatus*** Castelnau, 1861: Figure 3i

*Hydrocynus vittatus* CASTELNAU (1861): 65. — SEEGERs et al. (2003): 36; HABTESELASSIE (2012): 75; ESCHMEYER et al. (2016); FROESE & PAULY (2016).

*Hydrocyon lineatus* BLEEKER (1863): 125. — BOULENGER (1909): 182; TEDLA (1973): 23.

*Hydrocynus lineatus* — HOPSON & HOPSON (1982): 296.

**Material examined:** Table 2

Teeth unicuspid, in a single row on each jaw, visible when mouth is closed; adipose eyelid present; two rows of

scales between the scaly process at pelvic fins and lateral line; dorsal fin tip, adipose fin and caudal fin fork edges black; body silvery with light black stripes; sampled in the lower Omo River and the Ethiopian part of Lake Turkana; a new record for the former.

***Hydrocynus forskahlii*** (Cuvier, 1819): Figure 3j

*Hydrocyon forskahlii* CUVIER (1819):354.

*Hydrocynus forskahlii* — SEEGERs et al. (2003): 36; HABTESELASSIE (2012): 74; FROESE & PAULY (2016).

*Hydrocynus forskahlii* — ESCHMEYER et al. (2016).

*Hydrocynus forskahlii* — PAUGY (1984): 170.

*Hydrocyon forskahlii* — PELLEGRIN (1905): 291; PELLEGRIN (1935): 133; TEDLA (1973): 22.

*Hydrocyon forskahlii* — BOULENGER (1909): 180; HOPSON & HOPSON (1982): 295.

**Material examined:** Table 2

Teeth unicuspid, in a single row on each jaw, visible when mouth is closed; adipose eyelid present; two rows of scales between the scaly process at pelvic fins and lateral line; tip of dorsal fin, inner edges of caudal fin, and adipose fin uniformly grayish; upper dorsal part silvery; lower caudal lobe orange-red; sampled in the lower Omo River and the Ethiopian part of Lake Turkana.

***Alestes baremoze*** (Joannis, 1835): Figure 3k*Myletes baremoze* JOANNIS (1835):31.*Alestes baremoze* — SEEGERs et al. (2003): 35; HABTESELASSIE (2012): 76; ESCHMEYER et al. (2016); FROESE & PAULY (2016).*Alestes baremoze* — BOULENGER (1905): 40; BOULENGER (1909): 195; PELLEGRIN (1935): 133; TEDLA (1973): 24; HOPSON & HOPSON (1982): 298.*Alestes baremoze tchadense* BLACHE (1964): 74. — PAUGY (1984): 142.**Material examined:** Table 2

Dorsal fin equidistant between pelvic and anal fins or nearer to the latter; anal fin moderately long, with 25–30 branched rays; edges of caudal fin finely black; adipose eyelid present; more than 38 scales in the lateral line; body slightly laterally compressed; dorsal surface dark silver; lower caudal lobe orange red; pelvic and anal fins with orange red wash; sampled in the lower Omo River and the Ethiopian part of Lake Turkana.

***Brycinus nurse*** (Rüppell, 1832): Figure 3l*Myletes nurse* RÜPPELL (1832): 12.*Brycinus nurse* — HABTESELASSIE (2012): 77; FROESE & PAULY (2016).*Alestes nurse* — BOULENGER (1905): 40; BOULENGER (1909): 205; TEDLA (1973): 24; HOPSON & HOPSON (1982): 298; PAUGY (1984): 155.*Brachyalestes nurse* — ESCHMEYER et al. (2016).*Brachyalestes rüppellii* GÜNTHER (1864): 315.*Alestes rüppellii* — GÜNTHER (1896): 223.*Alestes nurse nana* PELLEGRIN (1935): 133.*Brycinus nurse nana* — SEEGERs et al. (2003): 35.**Material examined:** Table 2

Dorsal fin above or only slightly anterior to pelvic fin; head slightly flattened; teeth in outer row of premaxilla 8; sides silvery; unpaired fins bright red; paired fins colorless to light orange; dorsal and sides of the body silvery; sampled in the lower Omo River and the Ethiopian part of Lake Turkana.

## Family Citharinidae

***Citharinus citharus intermedius*** Worthington (1932): Figure 3m*Citharinus citharus intermedius* WORTHINGTON (1932): 123 — PELLEGRIN (1935):134; DAGET (1984): 214; SEEGERs et al. (2003): 35.*Serrasalminus citharus* GEOFFROY ST. HILAIRE (1809): 40.*Citharinus citharus* — BOULENGER (1909): 291; HABTESELASSIE (2012): 85; ESCHMEYER et al. (2016); FROESE & PAULY (2016).*Citharinus citharis* — HOPSON & HOPSON (1982): 306.*Citharinus geoffroi* CUVIER (1829): 313. — GÜNTHER (1896): 223.**Material examined:** Table 2

Mouth terminal, with unicuspid teeth on lip; body laterally compressed, covered with cycloid scales; dorsal and lateral upper half dark olive, lateral lower half white; pelvic, anal and lower lobe of caudal fin pinkish; sampled in the lower Omo River and the Ethiopian part of Lake Turkana.

## Family Distichodontidae

***Distichodus nefasch*** (Bonnaterre, 1788): Figure 3n*Salmo nefasch* BONNATERRE (1788): 169. — HABTESELASSIE (2012):

82; ESCHMEYER et al. (2016); FROESE &amp; PAULY (2016).

*Salmo niloticus* LINNAEUS in HASSELQUIST (1762): 422.*Distichodus niloticus* — BOULENGER (1909): 273; TEDLA (1973): 26; HOPSON & HOPSON (1982): 307; SEEGERs et al. (2003): 35.*Distichodus niloticus* (Linnaeus, 1766) — BOULENGER (1905): 42.*Distichodus rudolphi* GÜNTHER (1896): 223.**Material examined:** Table 2

Mouth subinferior, with small bicuspid teeth in two rows in each jaw; more than 20 dorsal fin rays; more than 90 lateral line scales; more than 15 scales between lateral line and pelvic fin; body slightly laterally compressed, covered with ctenoid scales; dorsal surface dark silver, lateral lower half light grey; sampled in the lower Omo River and the Ethiopian part of Lake Turkana.

## Order Cypriniformes

## Family Cyprinidae

***Labeo horie*** Heckel, 1847: Figure 3o*Labeo horie* HECKEL (1847): 304. — BOULENGER (1909): 306; PELLEGRIN (1935): 135; HOPSON & HOPSON (1982): 307; SEEGERs et al. (2003); HABTESELASSIE (2012): 109.**Material examined:** Table 2

No teeth on the jaws; inferior mouth with 1 pair of minute barbels present; maximum 14 branched dorsal fin rays; upper edge of dorsal fin straight or slightly convex; labial folds rather poorly developed; 40–44 scales in the lateral line; no transverse plicae of papillae on the inner sides of the lips; dorsal surface dark olive; sampled in the lower Omo River and the Ethiopian part of Lake Turkana.

***Labeo niloticus*** (Linnaeus, 1758): Figure 3p*Cyprinus niloticus* LINNAEUS (1758): 322.*Labeo niloticus* (Linnaeus, 1758) — FROESE & PAULY (2016).*Cyprinus niloticus* FORSSKÅL (1775): 71.*Labeo niloticus* — BOULENGER (1909): 304; HABTESELASSIE (2012): 107.**Material examined:** Table 2

No teeth on the jaws; inferior mouth with one pair of minute barbels; more than 14 branched dorsal fin rays; upper edge of dorsal fin often concave; 41–45 scales in the lateral line; no transverse plicae of papillae on the inner sides of the lips; dorsal surface dark olive; sampled in the lower Omo River and the Ethiopian part of Lake Turkana.

***Labeo coubie*** Rüppell, 1832: Figure 4a*Labeo coubie* RÜPPELL (1832): 11. — BOULENGER (1909): 317; HABTESELASSIE 2012: 108; ESCHMEYER et al. (2016); FROESE & PAULY (2016).**Material examined:** Table 2

No teeth on the jaws; inferior mouth with one pair of minute barbels; maximum 14 branched dorsal fin rays; upper edge of dorsal fin convex or straight; labial folds relatively well developed; 36–40 scales in the lateral line; transverse plicae of papillae present on the inner sides of the lips; sampled in the Ethiopian part of Lake Turkana (a new record).

Order Siluriformes  
Family Auchenoglanididae

***Auchenoglanis biscutatus*** (Geoffroy St. Hilaire, 1809):  
Figure 4b

*Pimelodus biscutatus* GEOFFROY ST. HILAIRE (1809): 320.

*Auchenoglanis biscutatus* — BOULENGER (1911): 367; HABTESELASSIE (2012): 140; ESCHMEYER et al. (2016); FROESE & PAULY (2016).

**Material examined:** Table 2

Scales absent; inferior mouth with three pairs of barbels; maxillary barbels long, reaching the posterior edge of eye, in contrast to *A. occidentalis*; caudal truncate; body medium brown with dark brown spots; lower lateral body part with reddish wash; specimens from the lower Omo River with reddish fins; sampled in the lower Omo River and the Ethiopian part of Lake Turkana; a new record for the latter.

***Auchenoglanis occidentalis*** (Valenciennes in Cuvier & Valenciennes, 1840): Figure 4c

*Pimelodus occidentalis* VALENCIENNES in CUVIER & VALENCIENNES, 1840: 203.

*Auchenoglanis occidentalis* — HABTESELASSIE (2012): 141; ESCHMEYER et al. (2016); FROESE & PAULY (2016).

*Auchenoglanis occidentalis* — BOULENGER (1905): 48; BOULENGER (1911): 369; HOPSON & HOPSON (1982).

*Auchenoglanis occidentalis* — SEEGER et al. (2003).

**Material examined:** Table 2

Scales absent; inferior mouth yellowish, with three pairs of barbels; maxillary barbels short, not reaching the posterior edge of eye; caudal truncate; moderate-sized black spots on body, small black spots on caudal fin; caudal fin orange red; sampled in the lower Omo River and the Ethiopian part of Lake Turkana.

Family Clariidae

***Clarias gariepinus*** (Burchell, 1822): Figure 4d

*Silurus gariepinus* BURCHELL (1822): 425.

*Clarias gariepinus* (Burchell, 1822) — BOULENGER (1911): 228; SEEGER et al. (2003): 37; HABTESELASSIE (2012): 151; ESCHMEYER et al. (2016); FROESE & PAULY (2016).

*Clarias lazera* VALENCIENNES in CUVIER & VALENCIENNES (1840): 372.

*Clarias lazera* — BOULENGER (1911): 232; TEDLA (1973): 63; HOPSON & HOPSON (1982): 320.

**Material examined:** Table 2

Scales absent; body elongate; subinferior mouth with four pairs of barbels; dorsal fin long, extending to the base of caudal; anal fin long, extending almost to caudal fin; no adipose fin; caudal fin round; sampled in the Ethiopian part of Lake Turkana.

Family Bagridae

***Bagrus bajad*** (Forsskål, 1775): Figure 4e

*Silurus bajad* FORSSKÅL (1775): 66.

*Bagrus bajad* — SEEGER et al. (2003): 36; HABTESELASSIE (2012): 142; ESCHMEYER et al. (2016); FROESE & PAULY (2016).

*Bagrus bayad* — BOULENGER (1911): 305.

**Material examined:** Table 2

Scales absent; head dorsally flattened; mouth subinferior with four pairs of barbels; caudal fin forked, upper and lower lobes extending into long filaments; the first branched dorsal fin ray extending into short filament; long fleshy adipose fin present; dorsally brown, laterally silver; some specimens dark brown; body gray; sampled in the lower Omo River and the Ethiopian part of Lake Turkana.

***Bagrus docmak*** (Forsskål, 1775): Figure 4f

*Silurus docmak* FORSSKÅL (1775): 65.

*Bagrus docmak* — SEEGER et al. (2003): 36; HABTESELASSIE (2012): 143; ESCHMEYER et al. (2016); FROESE & PAULY (2016).

*Bagrus docmac* — BOULENGER (1906): 559; BOULENGER (1911): 308; TEDLA (1973): 60; HOPSON & HOPSON (1982): 316.

**Material examined:** Table 2

Scales absent; head dorsally flat; mouth subinferior with four pairs of barbels; caudal fin forked, lower lobe not extending into long filament; the first branched dorsal fin ray not extending into short filament; long fleshy adipose fin present; body pale red in fresh specimens; sampled in the lower Omo River and the Ethiopian part of Lake Turkana.

Family Claroteidae

***Chrysichthys turkana*** Hardman, 2008: Figure 4g

*Chrysichthys turkana* HARDMAN (2008): 27

*Pimelodus auratus* GEOFFROY ST. HILAIRE (1809): 322.

*Chrysichthys auratus* — BOULENGER (1911): 325; HOPSON & HOPSON (1982): 317; SEEGER et al. (2003): 36; HABTESELASSIE (2012): 145; ESCHMEYER et al. (2016); FROESE & PAULY (2016).

*Chrysichthys auratus* — RISCH (1986): 14; MO (1991): 148.

**Material examined:** Table 2

Scales absent; head flat; mouth subinferior with four pairs of short barbels, not extending beyond head; head golden, dorsally golden dark, laterally golden white; dorsal fin with six unbranched rays; caudal fin forked; specimens of *Chrysichthys* collected from both the Omo River and Lake Turkana during the present study are identified as *Chrysichthys turkana* sensu Hardman (2008).

Family Malapteruridae

***Malapterurus minjiriya*** Sagua, 1987: Figure 4h

*Malapterurus minjiriya* SAGUA (1987): 78. — HABTESELASSIE (2012): 156; ESCHMEYER et al. (2016); FROESE & PAULY (2016).

**Material examined:** Table 2

Scales absent; three pairs of unbranched barbels; rayed dorsal fin absent; fleshy adipose fin present; pectoral fins placed low on the body; anal fin with 10 soft rays; caudal fin round or slightly truncate; sampled in the lower Omo River. The occurrence of this species in the Omo-Turkana





**Figure 4.** Species of fishes of the lower Omo River and Ethiopian part of Lake Turkana. **a.** *Labeo coubie*, 24 cm SL, ZNHM-F-0039. **b.** *Auchenoglanis biscutatus*, 28 cm SL, ZNHM-F-0040–41. **c.** *Auchenoglanis occidentalis*, 29 cm SL, ZNHM-F-0042–43. **d.** *Clarias gariepinus*, 72 cm SL, ZNHM-F-0044–45. **e.** *Bagrus bajad*, 54 cm SL, ZNHM-F-0046–47. **f.** *Bagrus docmak*, 43 cm SL, ZNHM-F-0048–49. **g.** *Chrysichthys turkana*, 23 cm SL, ZNHM-F-0050–52. **h.** *Malapterurus minjiriya*, 13 cm SL, ZNHM-F-0053. **i.** *Synodontis filamentosus*, 26 cm SL, ZNHM-F-0054–55. **j.** *Synodontis schall*, 32 cm SL, ZNHM-F-0056–62. **k.** *Schilbe mystus*, 32 cm SL, ZNHM-F-0063. **l.** *Schilbe uranoscopus*, 30 cm SL, ZNHM-F-0064–67. **m.** *Oreochromis niloticus*, 33 cm SL, ZNHM-F-0068–69. **n.** *Lates niloticus*, 45 cm SL, ZNHM-F-70–76. **o.** *Tetraodon lineatus*, 28 cm SL, ZNHM-F-0077.

system was also noted by Golubtsov and Berendzen (1999); sampled in the lower Omo River during this study.

#### Family Mochokidae

***Synodontis filamentosus*** Boulenger, 1901: Figure 4i  
*Synodontis filamentosus* BOULENGER (1901): 10. — BOULENGER (1911): 460; ESCHMEYER et al. (2016); FROESE & PAULY (2016).  
*Synodontis filamentosa* — HABTESELASSIE (2012): 166.

#### Material examined: Table 2

Scales absent; dorsal fin spine extends into very long filament approximately half the length of the spine; soft rays not extending into filament; body dark olive; sampled in the lower Omo River and the Ethiopian part of Lake Turkana; a new record for both localities.

***Synodontis schall*** (Bloch & Schneider, 1801): Figure 4j  
*Silurus schall* BLOCH & SCHNEIDER (1801): 385.  
*Synodontis schall* — BOULENGER (1911): 404; PELLEGRIN (1935): 135; TEDLA (1973): 66; HOPSON & HOPSON (1982): 323; HABTESELASSIE (2012): 170; ESCHMEYER et al. (2016); FROESE & PAULY (2016).

*Synodontis schal* — GÜNTHER (1896): 218, 220.  
*Synodontis schall* — Seegers et al. (2003): 39.

#### Material examined: Table 2

Scales absent; dorsal fin spine not extending into filament, feebly serrated posteriorly, smooth anteriorly, except for a few apical spines, also weak serration on lower anterior half in large individuals; first soft dorsal fin ray extends into short (rarely long) filament; no basal marginal membrane on maxillary barbel; body dark brown; sampled in the lower Omo River and the Ethiopian part of Lake Turkana.

#### Family Schilbeidae

***Schilbe mystus*** (Linnaeus, 1758): Figure 4k  
*Silurus mystus* LINNAEUS (1758): 305.  
*Schilbe mystus* — HABTESELASSIE (2012): 174; ESCHMEYER (2014).

#### Material examined: Table 2.

Scales absent; mouth terminal with four pairs of barbels; small fleshy adipose fin present far behind the small rayed dorsal fin; anal fin long, extending from pelvic fins to

caudal, with more than 63 rays; body laterally compressed; head profile rises gradually to dorsal fin; dorsal surface light brown, lateral side silvery white; fins with reddish wash; sampled in the lower Omo River.

**Schilbe uranoscopus** Rüppell, 1832: Figure 4l

*Schilbe uranoscopus* RÜPPELL (1832): 4. — BOULENGER (1911): 296; HOPSON & HOPSON (1982): 319; SEEGERs et al. (2003): 37; HABTESELASSIE (2012): 174; ESCHMEYER et al. (2016); FROESE & PAULY (2016).

**Material examined:** Table 2

Scales absent; mouth terminal with four pairs of barbels; adipose fin absent; anal fin long extending from pelvics to caudal, with more than 63 rays; body laterally compressed; head dorsally horizontal, with nape rising abruptly from occiput to the dorsal fin; dorsal surface light brown, lateral side silvery white; fins with reddish wash; sampled in the lower Omo River and the Ethiopian part of Lake Turkana; a new record for the former.

Order Perciformes

Family Cichlidae

**Oreochromis niloticus** (Linnaeus, 1758): Figure 4m

*Perca nilotica* LINNAEUS (1758): 290.  
*Oreochromis niloticus* — HABTESELASSIE (2012): 195; ESCHMEYER et al. (2016); FROESE & PAULY (2016).  
*Chromis niloticus* HASSELQUIST (1757): 346. — GÜNTHER (1896): 218.  
*Tilapia nilotica* (Linné, 1757) — BOULENGER (1915): 162; PELLEGRIN (1935): 137.  
*Tilapia nilotica* (Linnaeus, 1757): TEDLA (1973): 70.  
*Sarotherodon niloticus* (Linnaeus, 1757) — HOPSON & HOPSON (1982): 332.  
*Tilapia cancellata* NICHOLS (1923): 2.  
*Oreochromis niloticus cancellatus* — TREWAVAS & TEUGELS (1991): 330.  
*Tilapia vulcani* TREWAVAS (1933): 315.  
*Oreochromis niloticus vulcani* (Trewavas, 1933) — SEEGERs et al. (2003): 44.

**Material examined:** Table 2

Mouth terminal with bicuspid teeth on the outer jaws; dark vertical bands on flank, caudal peduncle and caudal fin; scales between pelvic and pectoral fins distinctly smaller than those on the rest of the body; body light grey, each scale with a black spot; black opercular spot; pectoral fin red; sampled in the lower Omo River and the Ethiopian part of Lake Turkana.

Family Latidae

**Lates niloticus** (Linnaeus, 1758): Figure 4n

*Labrus niloticus* LINNAEUS (1758): 286.  
*Lates niloticus* — SEEGERs et al. (2003): 42; HABTESELASSIE (2012): 189; ESCHMEYER et al. (2016); FROESE & PAULY (2016); PELLEGRIN (1935): 137; HOPSON & HOPSON (1982): 327.  
*Lates niloticus rudolfianus* WORTHINGTON (1932): 133.

**Material examined:** Table 2

Terminal mouth with villiform teeth; dorsal fin long, deeply notched into anterior and posterior regions; seven spines in the anterior dorsal fin; caudal fin rounded; body

scales ctenoid; single complete lateral line present; body silvery; sampled in the lower Omo River and the Ethiopian part of Lake Turkana.

Order Tetraodontiformes

Family Tetraodontidae

**Tetraodon lineatus** Linnaeus, 1758: Figure 4o

*Tetraodon lineatus* LINNAEUS (1758): 333. — SEEGERs et al. (2003): 47; HABTESELASSIE (2012): 199; ESCHMEYER et al. (2016); FROESE & PAULY (2016).  
*Tetrodon fahaka* LINNAEUS in HASSELQUIST (1762): 441. — BOULENGER (1916): 143.  
*Tetraodon strigosus* BENNETT (1834): 45.  
*Tetraodon fahaka* — HOPSON & HOPSON (1982): 337.  
*Tetraodon fahaka rudolfianus* DERANIYAGALA (1948): 29.

**Material examined:** Table 2

Dorsal fin short, located posteriorly; body scaleless, head and body covered with small thin spines; lateral line absent; a pair of fused teeth at the front of each jaw; yellow longitudinal bands on the body; caudal fin truncate to round, yellow in color; yellow longitudinal bands on body; ventral fins absent; sampled in the Ethiopian part of Lake Turkana.

**Diversity indices**

The values for the Shannon diversity, evenness indices and the permutation  $p$  are summarized in Table 3. The differences in the number of specimens and Shannon diversity index between the lower Omo River and the Ethiopian part of Lake Turkana were statistically significant ( $p < 0.05$ ; Table 3). The number of specimens was higher for the lake ( $n = 3,563$ ) whereas the Shannon diversity index was higher for the lower Omo River ( $H' = 2.43$ ) than for the Ethiopian part of Lake Turkana ( $H' = 2.20$ ). The expected species richness for the lower Omo River (i.e., the smaller sample) rarefied from the Ethiopian part of Lake Turkana (i.e., the larger sample) at a subsample size of  $n = 811$  was  $19 \pm 1.5$  at the 95% Confidence Interval (CI) (Figure 5). Figure 6 indicates the rank order abundance plot of the two habitats. The Whittaker's beta diversity index ( $\beta_w$ ) for the lower Omo River and the Ethiopian part of Lake Turkana system was 0.24.

**DISCUSSION**

Analyses of fish sampled indicate that diversity was higher in the sampled section of the Omo River than in the lake, but relative abundance was higher in the lake. Species richness in the lower Omo River (i.e., 26 species) was above the 95% CI of its expected (rarefied) richness of  $19 \pm 1.5$  species. Thus, differences in richness between the two environments could not be ascribed to differences in abundance or sampling effort (MAGURRAN 2004; GOTELLI & COLWELL 2011). Both the Shannon evenness indices (Table 3) and the rank order abundance plots (Figure 6) showed that species abundance distribution was more

even for the lower Omo River fishes. Therefore, the higher value of Shannon diversity index for the lower Omo River (Table 3), despite its lower overall relative abundance, should be accounted for by its greater evenness coupled with its relatively higher species richness (S).

Sites sampled during the present study represented only a small portion of the basin. Therefore, an analysis combining the present data and past studies is valuable for an understanding of the basin's ichthyofaunal diversity. Based on such analysis, 79 valid native fish species referable to 44 genera, 22 families and nine orders can be recognized for the entire Omo-Turkana basin, for which an annotated checklist is provided in Table 4. Besides the valid native species, the Omo-Turkana system also harbors one exotic subspecies i.e. *Oreochromis spilurus spilurus* and three potentially undescribed species, i.e., *Chiloglanis* sp. "Kerio", *Marcusenius* sp. "Turkwell" and *Enteromius* spec. "Baringo", in the Kerio and Turkwell basins (SEEGERS et al. 2003). In this basin-wide analysis, the Omo River still retains a greater richness at 63 (79.75%) fish species while Lake Turkana harbors only 55 (69.62%). Within Omo-Turkana basin, 24 species are restricted to the Omo River system (Table 4), of which five (*Enteromius arambourgi*, *Garra chebera*, *Neobola bottegoi*, *Afronemacheilus kaffa* and *Aplocheilichthys jeanneli*) are endemic to the river basin. However, the status of *N. bottegoi* as endemic to the Omo River (LÉVÊQUE et al. 1991) is not supported as the species also occurs in Somaliland (Auata River, tributary of Daua River), which is its type locality. Additionally, the current status of *Andersonia leptura* in the Omo River is uncertain as it has not been recorded since its first capture there in the 1930s (Table 4). *Garra makiensis*, cited as occurring in the Omo-Gibe River by STIASSNY & GETAHUN (2007), is apparently endemic to the Awash River and Lake Zeway basins in the central portion of the Ethiopian Rift Valley (BOULENGER 1909; GOLUBTSOV et al. 2012). Sixteen species are restricted to Lake Turkana, nine of these are endemic to the lake (Table 4). *Citharinus citharus intermedius* and *Chrysichthys turkana* are endemic to the Lake Turkana and Omo River, thus increasing the total number of endemic species or subspecies for the Lake Turkana and Omo River (excluding *N. bottegoi*) to 11 and six, respectively (Table 4). It is, however, worth noting that the present status of some species reported from Lake Turkana is also uncertain. In particular *Brycinus macrolepidotus*, *Labeobarbus nedgia*, *L. intermedius*, *Labeo cylindricus* and *Synodontis frontosus* have not been recently sampled in the lake (Table 4). In contrast, these species have recently been found in the Omo River system, suggesting their riverine occurrence (BARON et al. 1997; MOHAMMED 2014). As a result, the actual number of valid fish species for Lake Turkana could decrease from 55 to 51 (63.75% of the basin's total richness). Overall, compared to the great African lakes such as Victoria, Tanganyika and Malawi, which are dominated by endemic cichlids, Lake Turkana retains a Nilotic riverine fauna with low diversity (KOLDING 1989). The lake is also characterized by a low endemism with a maximum

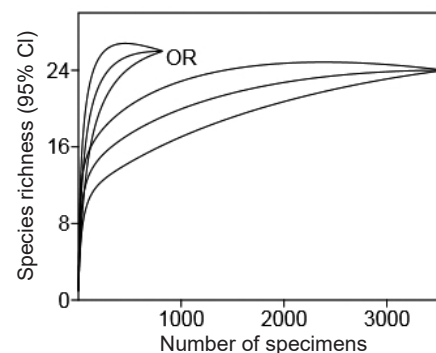
of 11 (13.75%) endemic species and subspecies (Table 4). The low endemism of the lake, and the basin as a whole, is apparently due to its historical connections to the White Nile River system, the recent connection being between 10,000–5,000 years ago, when the lake achieved its historical high levels (+77 to +80 m its present water level of 365±5 m a.s.l.) (HARVEY & GROVE 1982).

At the family level, the Cyprinidae are the largest group in the entire Omo-Turkana system comprising 22 species (27.85% of the basin's total richness), despite their poor presence in the present study. They occur in both the lacustrine and riverine habitats. In the basin, Nemacheilidae and Amphiliidae are known from the Omo River while three families (Protopteridae, Gymnarchidae and Tetraodontidae) are known from Lake Turkana. Mormyridae remains largely a riverine family with most of its species confined to the Omo River system. Confinement of this family to a riverine habitat could likely be attributed to the high conductivity of Lake Turkana's waters (2,342.47 µS/cm, recorded during the present study) which interferes with the current generating capacity of the electric organs of these fishes (GREENWOOD 1994; HOPKINS 1999).

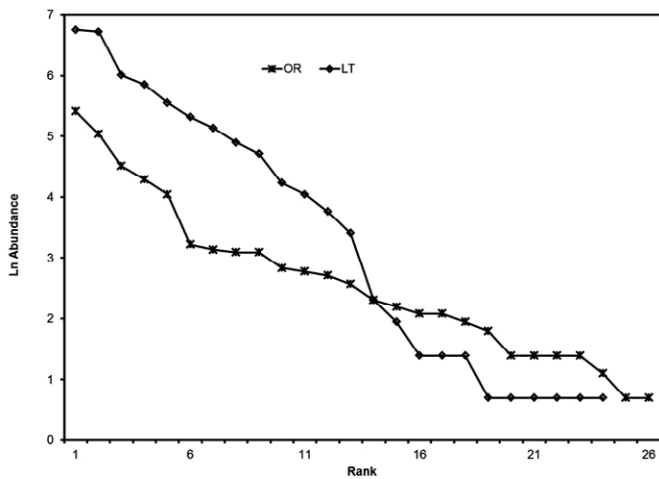
Previous studies addressing the Ethiopian drainages provided ichthyofaunal diversity for the entire Omo-Turkana Basin but lacked data on the extent of fish diversity in the Ethiopian part of the lake (GOLUBTSOV & MINA 2003; GOLUBTSOV & DARKOV 2008). Of all valid native fish species reported from Lake Turkana (51 species), only 24 species could be verified for the Ethiopian part of the lake based on the present collections (Table 2). Accordingly, 65 species in 39 genera, 20 families and seven orders can be recognized for the Omo-Turkana basin within the limits of Ethiopia pending further sampling efforts. Thus, the present study puts the Ethiopian Omo-Turkana basin in third place,

**Table 3.** Summary of specimen numbers (*n*) and diversity indices for the lower Omo River (OR) and the Ethiopian part of Lake Turkana (LT) based on the present data; \*represents statistically significant *p* values (i.e. < 0.005).

Parameter	OR	LT	Permutation <i>p</i>
Number of specimens ( <i>n</i> )	823	3,563	< 0.005*
Species richness ( <i>S</i> )	26	24	0.972
Shannon diversity index ( <i>H'</i> )	2.43	2.20	< 0.005*
Shannon evenness index ( <i>J'</i> )	0.75	0.69	0.051



**Figure 5.** Individual based rarefaction analysis for the lower Omo River (*n* = 823) and the Ethiopian part of Lake Turkana (*n* = 3,563); CI = Confidence Interval.



**Figure 6.** Rank order abundance plots for fish communities of the lower Omo River (OR) and the Ethiopian part of Lake Turkana (LT).

after the Baro-Akobo (Ethiopian White Nile, 113 species) and Abay (Ethiopian Blue, 77 species) basins, in terms of ichthyofaunal diversity. Similar to most other basins of Ethiopia, with the exception of the Blue Nile (GOLUBTSOV

& MINA 2003; GETAHUN 2007), it is characterized by a low endemism. So far, of the 10 species and one subspecies endemic to Lake Turkana, only *C. citharus intermedius* and *Chrysichthys turkana* are known from the Ethiopian waters. The Ethiopian parts of the Omo-Turkana basin house five species and one subspecies endemic to the Omo River system and one species (*Labeobarbus nedgia*) endemic to Ethiopia. An artificial identification key for the fish species occurring within the limit of Ethiopia is provided in the Appendix.

Based on the present collections, the rate of turnover in fish species composition between the lower Omo River and the Ethiopian part of Lake Turkana, measured as Whittaker's beta diversity index, was reasonably high ( $\beta_w = 0.24$ ). Seven species, i.e., *Polypterus senegalus*, *Mormyrus kannume*, *Mormyrops anguilloides*, *Hyperopisus bebe*, *Pollimyrus petherici*, *Malapterurus minjiriya* and *Schilbe mystus*, were recorded only from the lower Omo River. Correspondingly, five species, i.e., *Polypterus bichir*, *Heterotis niloticus*, *Labeo coubie*, *Clarias gariepinus* and *Tetraodon lineatus* were recorded only from Lake Turkana. The turnover in species composition between the two systems is attributable

**Table 4.** Annotated checklist of the native freshwater fishes of the Omo-Turkana system with local names (in Daasanach language) where available, historical and present records, notes on valid scientific names and synonyms, brief distribution account, and maximum length (total length TL, standard length SL or fork length FL) reported for the basin or elsewhere; family-group name follows Laan et al. (2014) for Arapaimidae and Nemacheilidae.

Order/family/species/local name(s) where available	Annotations on occurrence in the basin, scientific names, distribution elsewhere, and maximum length (TL/SL/FL)
<b>CERATODONTIFORMES</b>	
<b>Protopteridae (1 species)</b>	
<i>Protopterus aethiopicus</i> Heckel, 1851	Known only from three records from Lake Turkana by the Kenyan Marine and Fisheries Research Institute (KMFRI) station on the western shore of the lake at Kalakol; reported as <i>Protopterus aethiopicus aethiopicus</i> (SEEGERS et al. 2003); not known from the Ethiopian part of the lake; Nilo-Sudanic in distribution; 200 cm TL (SEEGERS et al. 2003).
<b>POLYPTERIFORMES</b>	
<b>Polypteridae (2 species)</b>	
<i>Polypterus bichir</i> Lacepède, 1803 Sharfante	Lake Turkana (GÜNTHER 1896; BOULENGER 1909; HOPSON & HOPSON 1982); also recorded from the Kerio River mouth in Kenya (SEEGERS et al. 2003); Nilo-Sudanic in distribution; 76 cm TL (present data).
<i>Polypterus senegalus</i> Cuvier, 1829 Sharfante	Northeast end of Lake Turkana (BOULENGER 1905, 1906, 1909; HOPSON & HOPSON 1982); Omo River Delta (PELLEGRIN 1935), and the lower Omo River (BARON et al. 1997); Nilo-Sudanic in distribution; 50.5 cm TL (SEEGERS et al. 2003).
<b>OSTEOGLOSSIFORMES</b>	
<b>Arapaimidae (1 species)</b>	
<i>Heterotis niloticus</i> (Cuvier, 1829)	Northeast end of Lake Turkana (BOULENGER 1906, 1909); subsequently recorded from the lake by HOPSON & HOPSON (1982); lower Omo River (BARON et al. 1997); Nilo-Sudanic in distribution; 98 cm TL (SEEGERS et al. 2003).
<b>Mormyridae (7 species)</b>	
<i>Mormyrus caschive</i> Linnaeus, 1758 Achumulo	Lower Omo River (BARON et al. 1997); Nilotic in distribution; 37 cm SL (present data).
<i>Mormyrus kannume</i> Forsskål, 1775 Achumulo	Turkwell River in Kenya; only observed in the Omo River Delta by HOPSON & HOPSON (1982); lower Omo River (BARON et al. 1997); Kerio system in Kenya (SEEGERS et al. 2003); Nilotic in distribution; 100 cm TL (SEEGERS et al. 2003).
<i>Mormyrops anguilloides</i> (Linnaeus, 1758)	Lower Omo River (BARON et al. 1997); widespread throughout sub-Saharan Africa; 42 cm SL (present data).
<i>Hyperopisus bebe</i> (Lacepède, 1803)	Omo River Delta (HOPSON & HOPSON 1982), lower Omo River (BARON et al. 1997); no scientific collections of the species exist from Lake Turkana, only verbal reports by fishermen of its occurrence in the northern end of the lake (SEEGERS et al. 2003); thus, past and present records tend to indicate the species to be riverine and probably confined to the Omo River; Nilo-Sudanic in distribution; 51 cm SL (SEEGERS et al. 2003).
<i>Marcusenius cyprinoides</i> (Linnaeus, 1758)	Lower Omo River (BARON et al. 1997); Nilo-Sudanic in distribution; 33 cm SL (BIGORNE 1990).
<i>Pollimyrus petherici</i> (Boulenger, 1898)	Lower Omo River (BARON et al. 1997); Nilotic in distribution; 19 cm SL (present data).
<i>Pollimyrus isidori</i> (Valenciennes, 1847)	Gojeb River, upper tributary of the Omo River system (DGEBUADZE et al. 1994); Nilo-Sudanic in distribution; 10.3 cm TL (LALÉYÉ 2006).
<b>Gymnarchidae (1 species)</b>	
<i>Gymnarchus niloticus</i> Cuvier, 1829	Northeast end of Lake Turkana (BOULENGER 1906, 1909); subsequently HOPSON & HOPSON (1982) only observed its fishery in the northern end of the lake near Omo River delta; Nilo-Sudanic in distribution; 151 cm TL (SEEGERS et al. 2003).

Continued

Table 4. Continued.

Order/family/species/local name(s) where available	Annotations on occurrence in the basin, scientific names, distribution elsewhere, and maximum length (TL/SL/FL)
<b>CHARACIFORMES</b>	
<b>Alestidae (9 species)</b>	
<i>Hydrocynus vittatus</i> Castelnau, 1861 Kornech	Lake Turkana (WORTHINGTON & RICHARDO 1936); not sampled by HOPSON & HOPSON (1982) who speculated that ecological changes in the lacustrine environment might have deterred riverine species from entering the lake; widespread throughout sub-Saharan Africa; 70 cm SL (SEEGERS et al. 2003).
<i>Hydrocynus forskahlii</i> (Cuvier, 1819) Kornech	Lake Turkana (PELLEGRIN 1905; BOULENGER 1909; HOPSON & HOPSON 1982); Omo River and its delta (PELLEGRIN 1935); lower Omo River (BARON et al. 1997); Nilo-Sudanic and Congolian in distribution; 78 cm SL (SEEGERS et al. 2003).
<i>Alestes baremoze</i> (Joannis, 1835) Lamete	Lake Turkana (BOULENGER 1905; BOULENGER 1909; HOPSON & HOPSON 1982); Omo River and its delta (PELLEGRIN 1935), and subsequently in the lower Omo River (BARON et al. 1997); Nilo-Sudanic in distribution; 46 cm FL (HOPSON & HOPSON 1982).
<i>Alestes dentex</i> (Linnaeus, 1758)	Lake Turkana (BOULENGER 1909; WORTHINGTON 1932; PELLEGRIN 1935; HOPSON & HOPSON 1982); Omo River system (BARON et al. 1997); Nilo-Sudanic in distribution; 55 cm TL (SEEGERS et al. 2003).
<i>Brycinus macrolepidotus</i> Valenciennes, 1850	Omo River system (BOULENGER 1903a, 1906, 1909; PELLEGRIN 1935; BARON et al. 1997); Lake Turkana (BOULENGER 1906, 1909); HOPSON & HOPSON (1982) observed a specimen of 20 cm FL swimming slowly at the surface in a manner characteristic of this species in the Omo River, 10 km upstream from the mouth of the delta; recorded in the Omo River system (BARON et al. 1997); reported as <i>Alestes macrolepidotus</i> Cuvier & Valenciennes, 1849; status in Lake Turkana not clear, likely a riverine species from the Omo River; widespread throughout sub-Saharan Africa; 50 cm FL (HOPSON & HOPSON 1982).
<i>Brycinus nurse</i> (Rüppell, 1832)	Lake Turkana (GÜNTHER 1896; BOULENGER 1909; HOPSON AND HOPSON 1982); SEEGERS et al. (2003) considered the Lake Turkana population valid as <i>Brycinus nurse nana</i> (Pellegrin, 1935) on account of its small size (max. FL 12 cm) in contrast to conspecifics found elsewhere growing to over FL 20 cm; Omo River system (BARON et al. 1997); Nilo-Sudanic in distribution; 12 cm FL (HOPSON & HOPSON 1982; SEEGERS et al. 2003).
<i>Brycinus ferox</i> (Hopson & Hopson, 1982)	Described from Lake Turkana as <i>Alestes ferox</i> Hopson & Hopson, 1982; endemic to Lake Turkana; 8.1 cm SL (SEEGERS et al. 2003); 12 cm FL (HOPSON & HOPSON 1982).
<i>Brycinus minutus</i> (Hopson & Hopson, 1982)	Described from Lake Turkana as <i>Alestes minutus</i> Hopson & Hopson, 1982; endemic to Lake Turkana; 3.7 cm FL (HOPSON & HOPSON 1982); 3.3 cm SL (SEEGERS et al. 2003).
<i>Micralestes elongatus</i> Daget, 1957	Omo River system (BOULENGER 1903a, 1909), and Lake Turkana (HOPSON & HOPSON 1982), reported as <i>Micralestes acutidens</i> (Peters, 1852) which apparently was a misidentification because the descriptions given by these authors, particularly the inner dentary teeth which are "monocuspid", is diagnostic for <i>Micralestes elongatus</i> (vs. pluricuspid for <i>M. acutidens</i> , see PAUGY & SCHAEFER 2007); also recorded from the lower Omo River (BARON et al. 1997); Nilo-Sudanic in distribution; 4.5 cm FL (HOPSON & HOPSON 1982; 6 cm TL (SEEGERS et al. 2003).
<b>Citharinidae (1 species)</b>	
<i>Citharinus citharus intermedius</i> Worthington, 1932 Nakurach	Lake Turkana (GÜNTHER 1896; HOPSON & HOPSON 1982); lower Omo River (PELLEGRIN 1935; BARON et al. 1997); the Omo-Turkana population is valid as <i>Citharinus citharus intermedius</i> , endemic to the basin (DAGET 1984; GOSSE & PAUGY 2003; SEEGERS et al. 2003), while <i>C. citharus citharus</i> is Nilo-Sudanic in distribution; 58 cm SL (SEEGERS et al. 2003); 65 cm FL (HOPSON & HOPSON 1982).
<b>Distichodontidae (2 species)</b>	
<i>Distichodus nefasch</i> (Bonnaterre, 1788) Golo	<i>Distichodus rudolphi</i> Günther, 1896, which is now a junior synonym of <i>D. nefasch</i> , was described from Lake Turkana; reported from the lake by subsequent investigators (BOULENGER 1905, 1909; HOPSON AND HOPSON 1982); recorded in the lower Omo River (BARON et al. 1997); Nilo-Sudanic in distribution; 99 cm FL (HOPSON & HOPSON 1982).
<i>Nannocharax niloticus</i> (Joannis, 1835)	Lower Omo River (BARON et al. 1997); Nilotic in distribution; 5.2 cm (DAGET & GOSSE 1984).
<b>CYPRINIFORMES</b>	
<b>Cyprinidae (22 species)</b>	
<i>Enteromius arambourgi</i> (Pellegrin, 1935)	Collected during the "La mission scientifique mission de l'Omo" in the Omo River system at a marsh about 50 km northwest of Sergoit, on the plateau Uasin Gishu, Ethiopia, and described by PELLEGRIN (1935); also subsequently recorded in the lower Omo River by BARON et al. (1997); previously reported as <i>Barbus arambourgi</i> ; endemic to the Omo River system; 7.8 cm SL (LÉVÉQUE & DAGET 1984).
<i>Enteromius neumayeri</i> (Fischer, 1884)	SEEGERS et al. (2003) mentioned the species as occurring in Lake Turkana system; wide distribution in eastern Africa; previously reported as <i>Barbus neumayeri</i> ; 10.3 cm SL (SEEGERS et al. 2003).
<i>Enteromius paludinosus</i> (Peters, 1852)	Gojeb River (DGEBUADZE et al. 1994); previously reported as <i>Barbus paludinosus</i> ; present in east, central and southern Africa; 15 cm SL (SKELTON 1993).
<i>Enteromius perince</i> (Rüppell, 1835)	Omo River system (BARON et al. 1997); previously reported as <i>Barbus perince</i> ; Nilo-Sudanic in distribution; 8.9 cm SL (LÉVÉQUE 1990).
<i>Enteromius stigmatopygus</i> (Boulenger, 1903)	Lake Turkana (BOULENGER 1911); Omo River and its delta (PELLEGRIN 1935); lower Omo River (BARON et al. 1997); Kalakol and Kataboi streams in Kenya (HOPSON & HOPSON 1982); previously reported as <i>Barbus stigmatopugus</i> ; also reported as <i>Barbus wernerii</i> Boulenger, 1905, which is a junior synonym; also mentioned as ' <i>Enteromius</i> ' aff. <i>stigmatopygus</i> Boulenger, 1903b casting doubts both on its identification and taxonomic status (SEEGERS et al. 2003); Nilo-Sudanic in distribution; 6.5 cm FL (HOPSON & HOPSON 1982).
<i>Enteromius turkanae</i> (Hopson & Hopson, 1982)	Described from Lake Turkana as <i>Barbus turkanae</i> Hopson & Hopson, 1982; previously reported as <i>Barbus turkanae</i> ; endemic to Lake Turkana; 4.2 cm SL (SEEGERS et al. 2003); 4.8 cm FL (HOPSON & HOPSON 1982).
<i>Labeobarbus nedgia</i> Rüppell, 1835	Lake Turkana (PELLEGRIN 1905); Gibe River, upper to mid tributary of the Omo River (BOULENGER 1906, 1911); subsequently unnoticed and not included in the reviews of the basin's fish diversity (e.g., TEDLA 1973; ROBERTS 1975; LÉVÉQUE et al. 1991); recently collected from Gojeb River, an upper tributary of the Omo river (MOHAMMED 2014); its current status in Lake Turkana is uncertain; endemic to Ethiopia; 70.7 cm SL (NAGELKERKE & SIBBING 1997).

Continued

Table 4. Continued.

Order/family/species/local name(s) where available	Annotations on occurrence in the basin, scientific names, distribution elsewhere, and maximum length (TL/SL/FL)
<i>Labeobarbus bynni</i> (Forsskål, 1775)	<i>Barbus meneliki</i> Pellegrin, 1905, now a junior synonym of <i>L. bynni</i> , was described from Lake Turkana (BANISTER 1973); subsequently the Turkana population was described as the subspecies <i>B. bynni rudolfianus</i> Worthington, 1932, which is also synonymised; also recorded in the lake by other investigators (BOULENGER 1911; HOPSON & HOPSON 1982), and in the lower Omo River (BARON et al. 1997); also reported as <i>Barbus bynni</i> (FORSSKÅL, 1775); Nilo-Sudanic in distribution; 89 cm FL (HOPSON & HOPSON 1982).
<i>Labeobarbus intermedius</i> (Rüppell, 1835)	Its occurrence in the upper Omo River was noted by BOULENGER (1906, 1911), and it was subsequently recorded from the lower Omo River (BARON et al. 1997); also reported from the Omo River as <i>Barbus bottegi</i> Boulenger, 1906, <i>Barbus gregorii</i> Boulenger, 1902, <i>Barbus duchesnii</i> Boulenger, 1902, <i>Barbus gudaricus</i> Boulenger, 1906, <i>Barbus oreas</i> Boulenger, 1902; and from Lake Turkana as <i>Barbus plagiosomus</i> Boulenger, 1906, which are now all junior synonyms; also occurs in the Kerio-Turkwell river systems (western Turkana drainage basins in Kenya) (SEEGERS et al. 2003); given its old record in Lake Turkana (BOULENGER 1911), the current status of the species in the lake is uncertain; Nilotic in distribution; 48.9 cm SL (SEEGERS et al. 2003).
<i>Labeo cylindricus</i> Peters, 1852 Karitach	Middle and upper Omo River system (BOULENGER 1906, 1909); occurs in Lake Turkana probably as stragglers (HOPSON & HOPSON 1982); recorded in the lower Omo River (BARON et al. 1997), and in the Kerio-Turkwell system in Kenya (SEEGERS et al. 2003); not reported from the Ethiopian part of the lake; Nilotic in distribution, also occurs in Congo and Zambezi provinces; 40 cm TL (SEEGERS et al. 2003).
<i>Labeo horie</i> Heckel, 1847 Karitach	Omo River and Lake Turkana (PELLEGRIN 1935); Lake Turkana (WORTHINGTON & RICHARDO 1936; HOPSON & HOPSON 1982); lower Omo River (BARON et al. 1997); restricted to the Nile basin; 86 cm FL (HOPSON & HOPSON 1982).
<i>Labeo niloticus</i> (Linnaeus, 1758) Karitach	Upper Omo River (BOULENGER 1906, 1909); in lower Omo River (Baron et al. 1997); despite REID's (1985) reference to its occurrence in Lake Turkana, SEEGERS et al. (2003) considered the species' record from the lake (from the collections of the Natural History Museum, London) as a misidentification of <i>Labeo horie</i> Heckel, 1847; however, its present collection in both the lower Omo River and the Ethiopian part of Lake Turkana supports its occurrence in Lake Turkana; restricted to the Nile basin; 48 cm SL (this study).
<i>Labeo coubie</i> Rüppell, 1832 Karitach	Lower Omo River (BARON et al. 1997); Nilo-Sudanic and Congolian in distribution; 24 cm SL (this study).
<i>Labeo forskalii</i> Rüppell, 1835 Karitach	Gojeb River, upper tributary of Omo River system (DGEBUADZE et al. 1994); Nilotic in distribution; 36 cm TL (LÉVÊQUE & DAGET 1984).
<i>Garra chebera</i> Habteselassie, Mikschi, Ahnelt & Waidbacher, 2010	Described from Dildil stream, a tributary of Lake Womba in Omo River system (HABTESELASSIE et al. 2010); endemic species known only from its type locality; 7.48 cm SL (HABTESELASSIE et al. 2010).
<i>Garra dembeensis</i> (Rüppell, 1835)	Reported from the Gibe River (BOULENGER 1906, 1909); subsequently recorded in the lower Omo River (BARON et al. 1997); Nilo-Sudanic in distribution; 11.0 cm SL (ECCLES 1992).
<i>Garra quadrimaculata</i> (Rüppell, 1835)	Omo River system (BARON et al. 1997); Eastern Province in southeastern Ethiopia; in southeastern Eritrea and the Arabian Peninsula; 10.7 cm SL (LÉVÊQUE & DAGET 1984).
<i>Raiamas senegalensis</i> (Steindachner, 1870)	Reported from middle and upper Omo River (BOULENGER 1903a, 1906, 1911) as <i>Barilius loati</i> Boulenger, 1901, which is now a junior synonym; subsequently recorded from the lower Omo River (BARON et al. 1997); recently collected from the Gojeb River (MOHAMMED 2014); also in the Turkwell drainage (Turkana basin in Kenya) (SEEGERS et al. 2003); Nilo-Sudanic in distribution; 24.5 cm TL (LÉVÊQUE & DAGET 1984).
<i>Leptocypris niloticus</i> (Joannis, 1835)	Middle Omo River system (BOULENGER 1903a, 1911); Lake Turkana (WORTHINGTON & RICHARDO 1936; HOPSON & HOPSON 1982); lower Omo River (BARON et al. 1997); not sampled during the present study; Nilo-Sudanic in distribution; 9.5 cm TL (SEEGERS et al. 2003).
<i>Neobola bottegi</i> Vinciguerra, 1895	Recorded in the Omo River system by BOULENGER (1903a, 1906, 1911) who also reported its presence in Lake Turkana as <i>Engraulicypris bottegi</i> (Vinciguerra, 1895); however, its presence in Lake Turkana has been suspected by subsequent workers to be a misidentification of <i>Neobola stellae</i> ; lower Omo River (BARON et al. 1997); likely a riverine species restricted to the Omo River; mentioned as endemic to the Omo River (LÉVÊQUE et al. 1991), but the species also occurs in Somaliland (Auata River, tributary of Daa River), the type locality; 7.3 cm TL (LÉVÊQUE & DAGET 1984).
<i>Neobola stellae</i> (Worthington, 1932)	Recorded from Lake Turkana as <i>Engraulicypris stellae</i> Worthington, 1932; subsequently also recorded in the lake (PELLEGRIN 1935; HOPSON & HOPSON 1982); endemic to Lake Turkana; 2.3 cm SL (SEEGERS et al. 2003); 3.3 cm FL (HOPSON & HOPSON 1982).
<i>Chelaethiops bibie</i> (Joannis, 1835)	Lake Turkana (HOPSON & HOPSON 1982); Omo River system (BARON et al. 1997); Nilo-Sudanic in distribution; 5.1 cm SL (HOPSON & HOPSON 1982); 5.5 cm TL (SEEGERS et al. 2003).
<b>Nemacheilidae (1 species)</b>	
<i>Afronemacheilus kaffa</i> Prokofiev & Golubtsov, 2013	Identified as <i>Afronemacheilus abyssinicus</i> (non Boulenger, 1902) from the Gojeb River (DGEBUADZE et al. 1994), and later described as <i>Afronemacheilus kaffa</i> Prokofiev & Golubtsov, 2013; endemic to Omo River basin; 5.5 cm SL (PROKOFIEV & GOLUBTSOV 2013).
<b>SILURIFORMES</b>	
<b>Amphiliidae (1 species)</b>	
<i>Andersonia leptura</i> Boulenger, 1900	Omo River delta (PELLEGRIN 1935); not sampled in subsequent studies or in the present study; current status in the basin is uncertain; Nilo-Sudanic in distribution; 2.8 cm TL (HOPSON & HOPSON 1982).
<b>Auchenoglanididae (2 species)</b>	
<i>Auchenoglanis biscutatus</i> (Geoffroy St. Hilaire, 1809) Dir	Lower Omo River (BARON et al. 1997); Nilo-Sudanic in distribution; 28 cm SL (this study).
<i>Auchenoglanis occidentalis</i> (Valenciennes in Cuvier & Valenciennes, 1840)	Lake Turkana (BOULENGER 1911; HOPSON & HOPSON 1982); Lower Omo River (BARON et al. 1997); Nilo-Sudanic and Congolian in distribution; 48 cm SL (SEEGERS et al. 2003); 51 cm TL (HOPSON & HOPSON 1982).
<b>Clariidae (2 species)</b>	
<i>Clarias gariepinus</i> (Burchell, 1822)	Omo River system (BOULENGER 1911); Lake Turkana (WORTHINGTON & RICHARDO 1936; HOPSON & HOPSON 1982); all reported as <i>Clarias lazera</i> Cuvier & Valenciennes, 1840, which is now a junior synonym; also recorded in the lower Omo River (BARON et al. 1997); widespread throughout sub-Saharan Africa; 150 cm TL (SEEGERS et al. 2003).

Continued

Table 4. Continued.

Order/family/species/local name(s) where available	Annotations on occurrence in the basin, scientific names, distribution elsewhere, and maximum length (TL/SL/FL)
<i>Heterobranchus longifilis</i> (Valenciennes, 1840)	Upper tributaries of the Omo River (BOULENGER 1906, 1911); subsequently HOPSON & HOPSON (1982) cited fishermen's report of its occurrence in the region of the Omo River delta; recorded in the lower Omo River (BARON et al. 1997); Nilo-Sudanic in distribution; 100 cm TL (SEEGERS et al. 2003).
<b>Bagridae (2 species)</b>	
<i>Bagrus bajad</i> (Forsskål, 1775) Nyarabomos	Lake Turkana (WORTHINGTON & RICHARDO 1936; HOPSON & HOPSON 1982); reported as <i>Bagrus bayad</i> (Forsskål, 1775), which is a misspelled name; lower Omo River (BARON et al. 1997); Nilo-Sudanic in distribution; 90 cm FL (HOPSON & HOPSON 1982).
<i>Bagrus docmak</i> (Forsskål, 1775) Nyarabomos	Upper Omo River (BOULENGER 1906, 1911); Lake Turkana (HOPSON & HOPSON 1982); lower Omo River (BARON et al. 1997); Nilo-Sudanic in distribution; 110 cm TL (SEEGERS et al. 2003).
<b>Claroteidae (1 species)</b>	
<i>Chrysichthys turkana</i> Hardman, 2008	Identified as <i>Chrysichthys auratus</i> (non GEOFFROY ST. HILAIRE, 1809), from Lake Turkana by HOPSON & HOPSON (1982); later, the Turkana population was described as a distinct species, <i>Chrysichthys turkana</i> (Hardman 2008); also reported from lower Omo River (BARON et al. 1997); apparently endemic to Lake Turkana and Omo River system; 30 cm FL (HOPSON & HOPSON 1982).
<b>Malapteruridae (2 species)</b>	
<i>Malapterurus minjiriya</i> Sagua, 1987	Omo River system (BARON et al. 1997; GOLUBTSOV & BERENDZEN 1999); Nilo-Sudanic in distribution; White Nile (Baro and Alveiro rivers) in Ethiopia; 51 cm SL (NORRIS 2003).
<i>Malapterurus electricus</i> (Gmelin, 1789)	Omo River Delta (PELLEGRIN 1935); Omo River system (BARON et al. 1997); Lake Turkana and Turkwell River system (a southwestern tributary of Lake Turkana in Kenya) (HOPSON & HOPSON 1982); Nilo-Sudanic in distribution; 122 cm TL (SEEGERS et al. 2003).
<b>Mochokidae (7 species)</b>	
<i>Chiloglanis niloticus</i> Boulenger, 1900	Omo River system (BARON et al. 1997); not sampled during the present study; Nilo-Sudanic in distribution; 4.5 cm SL (GOSSE 1986).
<i>Mochokus niloticus</i> Joannis, 1835	Reported from Lake Turkana (BOULENGER 1911; HOPSON & HOPSON 1982) as <i>Mochocus niloticus</i> Joannis, 1835, which is a misspelled name; Nilo-Sudanic in distribution; 6.5 cm TL (SEEGERS et al. 2003).
<i>Synodontis filamentosus</i> Boulenger, 1901 Dir	Sampled in both the lower Omo River and the Ethiopian part of Lake Turkana during the present study, also mentioned as <i>Synodontis filamentosa</i> Boulenger, 1901 (HABTESILASSIE, 2012); Nilo-Sudanic in distribution; 26 cm SL (OLAOSEBIKAN & RAJI 1998).
<i>Synodontis schall</i> (Bloch & Schneider, 1801) Dir	Lake Turkana by GÜNTHER (1896) as <i>Synodontis schal</i> (Bloch & Schneider, 1801), a misspelled name; followed by reports of BOULENGER (1911), PELLEGRIN (1935), HOPSON & HOPSON (1982); lower Omo River (BARON et al. 1997); Nilo-Sudanic in distribution; 43 cm TL (SEEGERS et al. 2003).
<i>Synodontis frontosus</i> Vaillant, 1895 Dir	Northeast end of Lake Turkana (BOULENGER 1906, 1911); upper part of Omo River Delta (HOPSON & HOPSON 1982); lower Omo River (BARON et al. 1997); likely a riverine species confined to the Omo River; Nilo-Sudanic in distribution; 34.2 cm TL (SEEGERS et al. 2003).
<i>Synodontis serratus</i> Rüppell, 1829 Dir	Lower Omo River (BARON et al. 1997); Nilotic in distribution; 39.5 cm TL (GOSSE 1986).
<i>Synodontis sorex</i> Günther, 1864 Dir	Lower Omo River (BARON et al. 1997); Nilo-Sudanic in distribution; 36.0 cm SL (OLAOSEBIKAN & RAJI 1998).
<b>Schilbeidae (3 species)</b>	
<i>Schilbe mystus</i> (Linnaeus, 1758) lyinte	Lower Omo River (BARON et al. 1997); also in Nile and Zambezi system; 32 cm SL (this study).
<i>Schilbe uranoscopus</i> Rüppell, 1832 lyinte	Lake Turkana (HOPSON & HOPSON 1982); Nilo-Sudanic in distribution; 34 cm SL (HOPSON & HOPSON 1982); 36 cm TL (SEEGERS et al. 2003).
<i>Schilbe intermedius</i> Rüppell, 1832 lyinte	Lower Omo River (BARON et al. 1997); widely distributed, sub-Saharan Africa; 50 cm SL (DE VOS 2003).
<b>CYPRINODONTIFORMES</b>	
<b>Poeciliidae (2 species)</b>	
<i>Aplocheilichthys rudolfianus</i> (Worthington, 1932)	Described from Lake Turkana as <i>Haplochilichthys rudolfianus</i> Worthington, 1932; subsequently recorded in the lake by HOPSON & HOPSON (1982); as <i>Micropanchax rudolfianus</i> (Worthington, 1932) (HUBER 1999); endemic to Lake Turkana; 3 cm TL (SEEGERS et al. 2003).
<i>Aplocheilichthys jeanneli</i> (Pellegrin, 1935)	Described from the Omo River Delta as <i>Haplochilichthys jeanneli</i> Pellegrin, 1935; subsequently recorded in the Omo River Delta by HOPSON & HOPSON (1982); endemic to the Omo River; 3 cm TL (SEEGERS et al. 2003).
<b>PERCIFORMES</b>	
<b>Cichlidae (7 species)</b>	
<i>Oreochromis niloticus</i> (Linnaeus, 1758)	Lake Turkana (GÜNTHER 1896; WORTHINGTON & RICHARDO 1936; HOPSON & HOPSON 1982); upper Omo River and northeast end of Lake Turkana (BOULENGER 1906, 1915); Omo River (PELLEGRIN 1935; BARON et al. 1997); Nilo-Sudanic in distribution; 64 cm TL (HOPSON & HOPSON 1982).
<i>Sarotherodon galilaeus</i> (Linnaeus, 1758)	Lake Turkana (WORTHINGTON & RICHARDO 1936; HOPSON & HOPSON 1982); reported as <i>Tilapia galilaea</i> (Artemi, 1757) or <i>Sarotherodon galilaeus</i> (Artemi, 1757); lower Omo River (BARON et al. 1997); Nilo-Sudanic in distribution; 34 cm SL (Seegers et al. 2003); 35 cm TL (HOPSON & HOPSON 1982).
<i>Coptodon zillii</i> (Gervais, 1848)	Lake Turkana (GÜNTHER 1896; PELLEGRIN 1935; BOULENGER 1915; HOPSON & HOPSON 1982); lower Omo River (BARON et al. 1997); previously reported as <i>Tilapia zillii</i> ; also as <i>Chromis tristrami</i> Günther, 1862, which is a junior synonym; Nilo-Sudanic in distribution; 33 cm TL (HOPSON & HOPSON 1982).
<i>Haplochromis rudolfianus</i> Trewavas, 1933	Described from Lake Turkana; subsequently recorded from the lake by HOPSON & HOPSON (1982); listed as <i>Thoracochromis rudolfianus</i> (Trewavas, 1933) by LÉVÊQUE et al. (1991); endemic to Lake Turkana; 9.5 cm TL (HOPSON & HOPSON 1982).
<i>Haplochromis macconneli</i> Greenwood, 1974	Described from Lake Turkana; subsequently recorded from the lake by HOPSON & HOPSON (1982); listed as <i>Thoracochromis macconneli</i> (Greenwood, 1974) by LÉVÊQUE et al. (1991); endemic to Lake Turkana; 13 cm TL (SEEGERS et al. 2003).

Continued

Table 4. Continued.

Order/family/species/local name(s) where available	Annotations on occurrence in the basin, scientific names, distribution elsewhere, and maximum length (TL/SL/FL)
<i>Haplochromis turkanae</i> Greenwood, 1974	Described from Lake Turkana; subsequently recorded from the lake by HOPSON & HOPSON (1982); listed as <i>Thoracochromis turkanae</i> (Greenwood, 1974) by LÉVÊQUE et al. (1991); endemic to Lake Turkana; 8.6 cm SL (SEEGERS et al. 2003).
<i>Hemichromis exsul</i> (Trewavas, 1933)	Described from Lake Turkana as <i>Pelmatochromis exsul</i> Trewavas, 1933; later on recognized to be misidentification of <i>Hemichromis bimaculatus</i> Gill, 1862 (TREWAVAS 1933; HOPSON & HOPSON 1982); listed as a synonym of <i>Hemichromis letourneuxi</i> Sauvage, 1880 by DAGET & TEUGELS (1991); however, according to SEEGERS et al. (2003) the Lake Turkana population probably is a distinct species endemic to the lake; Nilo-Sudanic in distribution; 15 cm TL (HOPSON & HOPSON 1982).
<b>Latidae (2 species)</b>	
<i>Lates niloticus</i> (Linnaeus, 1758)	Reported from Lake Turkana (BOULENGER 1915; HOPSON & HOPSON 1982); <i>L. niloticus rudolfianus</i> Worthington, 1932, described from the lake, is now synonymised; also recorded from the Omo River and its delta (PELLEGRIN 1935; BARON et al. 1997); widely distributed in Nilo-Sudanic and Congolian Province; 196 cm TL (HOPSON & HOPSON 1982).
<i>Lates longispinis</i> Worthington, 1932	Described from Lake Turkana as <i>L. niloticus longispinis</i> Worthington, 1932, now a valid species; subsequently recorded from the lake by HOPSON & HOPSON (1982); endemic to lake Turkana; 40 cm SL (HOPSON & HOPSON 1982).
<b>TETRAODONTIFORMES</b>	
<b>Tetraodontidae (1 species)</b>	
<i>Tetraodon lineatus</i> Linnaeus, 1758	<i>Tetraodon fahaka rudolfianus</i> Deraniyagala, 1948, described from lake Turkana, is now a junior synonym of <i>T. lineatus</i> ; recorded by subsequent studies (HAMBLYN 1962; MANN 1964; HOPSON & HOPSON 1982) from Lake Turkana; Nilo-Sudanic in distribution; 43 cm TL (SEEGERS et al. 2003).

particularly to members of the family Mormyridae, most of which are restricted to the Omo River system.

## ACKNOWLEDGEMENTS

We acknowledge Alemayehu Bayissa, a vehicle driver, and Yedilfire Hailu, a boat operator, for their extensive assistance during fieldwork. We are also indebted to the fishers of the Ethiopian part of Lake Turkana for assisting in sampling and as local guides. We are grateful to Dr. Dereje Denu, Assistant Professor at Jimma University, for his utmost assistance in developing the map of the study area. We thank the Graduate Program of Addis Ababa University, Ethiopia for the financial support. We also thank anonymous reviewers whose comments have greatly improved the manuscript.

## LITERATURE CITED

- VERY, S. 2010. Hydrological impacts of Ethiopia's Omo Basin on Kenya's Lake Turkana water levels and fisheries: final report. Prepared for the African Development Bank, Tunis. 146 pp. [http://www.mursi.org/pdf/avery-report-vol-i/at\\_download/file](http://www.mursi.org/pdf/avery-report-vol-i/at_download/file)
- BANISTER, K.E. 1973. A revision of the large *Barbus* (Pisces, Cyprinidae) of east and central Africa. Studies on African Cyprinidae. Part 2. Bulletin of The British Museum (Natural History) Zoology 26(1): 3–148. doi: [10.5962/bhl.part.204](https://doi.org/10.5962/bhl.part.204)
- BARON, V., A. GOLUBTSOV, K. MORSHNEV & B. ZEMENE. 1997. Report on electrophysiological and some faunistic studies carried out by the Freshwater Biology Group of the Joint Ethio-Russian Biological Expedition in December 1996–February 1997. Addis Ababa: Joint Ethio-Russian Biological Expedition. 11 pp.
- BENNETT, E.T. 1834. Characters of new fishes, collected by Lieutenant Allen, in western Africa. Proceedings of the Zoological Society of London 2: 45–46. <http://biodiversitylibrary.org/page/30568350>
- BIGORNE, R. 1990. Mormyridae; pp. 122–184, in: C. LÉVÊQUE, D. PAUGY & G.G. TEUGELS (eds.). Faune des poissons d'eaux saumâtres d'Afrique de l'Ouest, Tome 1. Faune Tropicale XXVIII. Tervuren: MRAC and Paris: ORSTOM.
- BLACHE, J. 1964. Les poissons du bassin du Tchad et du bassin adjacent du Mayo Kebbi. Étude systématique et biologique. Mémoires de l'ORSTOM 4: 1–483.
- BLEEKER, P. 1863. Mémoire sur les poissons de la côte de Guinée. Natuurkundige Verhandelingen van de Hollandsche Maatschappij der Wetenschappen te Haarlem 18 (1862): 1–136.
- BLOCH, M.E. & J.G. SCHNEIDER. 1801. Systema ichthyologiae iconibus cx illustratum. Berolini: Sumtibus auctoris impressum et Bibliopolio Sanderiano commissum. 584 pp. doi: [10.5962/bhl.title.5750](https://doi.org/10.5962/bhl.title.5750)
- BONNATERRE, J.P. 1788. Tableau encyclopédique et méthodique des trois règnes de la nature. Ichthyologie. Paris: Panckoucke. 100 pp. doi: [10.5962/bhl.title.11660](https://doi.org/10.5962/bhl.title.11660)
- BOULENGER, G.A. 1898. Matériaux pour la faune du Congo. Poissons nouveaux du Congo. Première Partie. Mormyres. Annales du Musée du Congo. Zoologie 1(1): 1–20. <http://www.biodiversitylibrary.org/page/4782444>
- BOULENGER, G.A. 1900. On some little-known African silurid fishes of the subfamily Doradinae. Annals and Magazine of Natural History (Series 7) 6(36): 520–529. <http://www.biodiversitylibrary.org/page/15629977>
- BOULENGER, G.A. 1901. Descriptions of three new silurid fishes of the genus *Synodontis* discovered by Mr. W.L.S. Loat in the White Nile. Annals and Magazine of Natural History (Series 7) 8(43): 10–12. <http://biodiversitylibrary.org/page/29980090>
- BOULENGER, G.A. 1903a. Report on the Fishes collected by Mr. Oscar Neumann and Baron Carlo von Erlanger in Gallaland and southern Ethiopia. Proceedings of the Zoological Society of London 1903: 328–334. <http://biodiversitylibrary.org/page/31610407>
- BOULENGER, G.A. 1903b. Diagnoses of four new species of *Barbus* from the Nile. Annals and Magazine of Natural History (Series 7) 12 (71): 532–533. <http://biodiversitylibrary.org/page/4254470>
- BOULENGER, G.A. 1905. A list of freshwater fishes of Africa. Annals and Magazine of Natural History (Series 7) 16: 36–60. <http://biodiversitylibrary.org/page/4254470>
- BOULENGER, G.A. 1906. On a collection of fishes from Gallaland. Annals and Magazine of Natural History (Series 7) 17: 557–566. <http://biodiversitylibrary.org/page/4254470>
- BOULENGER, G.A. 1909. Catalogue of the freshwater fishes of Africa in the British Museum (Natural History), Volume 1. London: Taylor & Francis. 373 pp. <http://biodiversitylibrary.org/page/9384492>
- BOULENGER, G.A. 1911. Catalogue of the freshwater fishes of Africa in the British Museum (Natural History), Volume 2. London: Taylor & Francis. 529 pp. <http://biodiversitylibrary.org/page/4254470>
- BOULENGER, G.A. 1915. Catalogue of the freshwater fishes of Africa in the British Museum (Natural History), Volume 3. London: Taylor and Francis. 526 pp. <http://biodiversitylibrary.org/page/4254470>
- BOULENGER, G.A. 1916. Catalogue of the freshwater fishes of Africa in



- the British Museum (Natural History), Volume 4 London: Taylor & Francis. 392 pp. <http://biodiversitylibrary.org/page/4254470>
- BURCHELL, W.J. 1822. Travels in the interior of southern Africa.1: 1–582. London: Longman. <http://biodiversitylibrary.org/page/47297053>
- CASTELNAU, F.L. 1861. Mémoire sur les poissons de l'Afrique australe. Paris: J.-B. Baillière et fils. 78 pp. <http://www.biodiversitylibrary.org/bibliography/3819#/summary>
- CSA (CENTRAL STATISTICAL AUTHORITY OF ETHIOPIA). 2009. National Statistics Abstract: Section-A: Land and Climate. Addis Ababa: Central Statistical Authority of Ethiopia. 11 pp. [http://www.csa.gov.et/images/documents/pdf\\_files/nationalstatisticsabstract/2009/2009%20climate.pdf](http://www.csa.gov.et/images/documents/pdf_files/nationalstatisticsabstract/2009/2009%20climate.pdf)
- CUVIER, G. 1819. Sur les poissons du sous-genre *Hydrocyon*, sur deux nouvelles espèces de *Chalceus*, sur trois nouvelles espèces du *Serrasalmes*, et sur l'*Argentina glossodonta* de Forskahl, qui est l'*Albula gonorhynchus* de Bloch. Mémoires du Muséum National d'Histoire Naturelle, Paris (N.S.) (Série A) Zoologie 5: 351–379.
- CUVIER, G. 1829. Le règne animal, distribué d'après son organisation, pour servir de base à l'histoire naturelle des animaux et d'introduction à l'anatomie comparée. 2<sup>nd</sup> édition. 2: 1–406. <http://biodiversitylibrary.org/page/4254470>
- CUVIER, G. & A. VALENCIENNES. 1850. Histoire naturelle des poissons. Tome vingt-deuxième. Suite du livre vingt-deuxième. Suite de la famille des Salmonoides. Table générale de l'Histoire Naturelle des Poissons (pp. 1–91). 22: 634–650. <http://biodiversitylibrary.org/page/4254470>
- DAGET, J. 1957. Deuxième partie. Les poissons; pp. 99–169, in: M. BLANC & J. DAGET, Mélanges biologiques. Les eaux et les poissons de Haute-Volta. Mémoires de l'Institut français d'Afrique Noire 50.
- DAGET, J. 1984. Citharinidae; pp. 212–216, in: J. DAGET, J.-P. GOSSE & D.F.E. THYS VAN DEN AUDENAERDE (eds.). Check-list of the freshwater fishes of Africa (CLOFFA), Volume 1. Tervuren: MRAC, Paris: ORSTOM.
- DAGET, J. & G. G. TEUGELS. 1991. *Hemichromis*; pp. 187–194, in: J. DAGET, J.-P. GROSSE, G. G. TEUGELS & D. F. E. THYS VAN DEN AUDENAERDE (eds.). Check-list of the freshwater fishes of Africa. CLOFFA, volume 4. Bruxelles/Tervuren: MRAC, Paris: ORSTOM. <http://www.nhbs.com/series/38043/checklist-of-the-freshwater-fishes-of-africa-cloffa>
- DERANIYAGALA, P.E.P. 1948. Some scientific results of two visits to Africa. *Spolia Zeylanica* 25(2): 1–42.
- DGEBUADZE, YU.YU., A.S. GOLUBTSOV, V.N. MIKHEEV, & M.V. MINA. 1994. Four fish species new to the Omo-Turkana basin, with comments on the distribution of *Nemacheilus abyssinicus* (Cypriniformes: Balitoridae) in Ethiopia. *Hydrobiologia* 286: 125–128. doi: [10.1007/BF00008502](https://doi.org/10.1007/BF00008502)
- DE VOS, L. 2003. Schilbeidae; pp. 97–116, in: C. LÉVÊQUE, D. PAUGY & G.G. TEUGELS. (eds.). Faune des poissons d'eaux douces et saumâtres de l'Afrique de l'Ouest, Tome 2. Coll. Faune et Flore Tropicales 40. Tervuren: MRAC, Paris: MNHN/NRD.
- DAGET, J. & J.-P. GOSSE. 1984. Distichodontidae; pp. 184–211, in: J. DAGET, J.-P. GOSSE & D.F.E. THYS VAN DEN AUDENAERDE (eds.). Check-list of the freshwater fishes of Africa (CLOFFA), Volume 1. Paris: ORSTOM and Tervuren: MRAC.
- ECCLES, D.H. 1992. FAO species identification sheets for fishery purposes. Field guide to the freshwater fishes of Tanzania. Prepared and published with the support of the United Nations Development Programme (project URT/87/016). Rome: FAO. 143 pp.
- EPECO (ETHIOPIAN ELECTRIC POWER CORPORATION). 2009. Gibe III Environmental and social impact assessment: additional study on downstream impacts. Addis Ababa: EPECO. 289 pp.
- ESCHMEYER, W.N., R. FRICKE & R. VAN DER LAAN (eds). 2016. Catalog of fishes: genera, species, and references. Electronic version accessed at <http://researcharchive.calacademy.org/research/ichthyology/catalog/fishcatmain.asp>, 31March 2016.
- FAO (FOOD AND AGRICULTURE ORGANIZATION OF THE UNITED NATIONS). 2003. Information on fisheries management in the Federal Democratic Republic of Ethiopia, January, 2003. Accessed at <http://www.fao.org/fi/oldsite/FCP/en/ETH/body.htm>, 27 November 2014.
- FEIBEL, C.S. 2011. A Geological History of the Turkana Basin. *Evolutionary Anthropology* 20: 206–216. doi: [10.1002/evan.20331](https://doi.org/10.1002/evan.20331)
- FERGUSON, A.J.D. & B.J. HARBOTT. 1982. Geographical, chemical and physical aspects of Lake Turkana; pp. 1–108, in: A.J.H. HOPSON (ed.). Lake Turkana: a report on the findings of the Lake Turkana Project 1972–1975. Vol. 1. London: Overseas Development Administration.
- FISCHER, J.G. 1884. Über einige Afrikanische Reptilien, Amphibien, und Fische des Naturhistorischen Museums. I. Über die von Herrn G. A. Fischer im Massai-Gebiete (Ost-Afrika) auf seiner in Veranlassung der Geographischen Gesellschaft in Hamburg unternommenen Expedition gesammelten Reptilien, Amphibien und Fische. *Jahrbuch der Hamburgischen Wissenschaftlichen Anstalten* 1: 1–32.
- FORSKÅL, P.S. 1775. Descriptiones animalium avium, amphibiorum, piscium, insectorum, vermium; quae in itinere orientali observavit. 164 pp. doi: [10.5962/bhl.title.2154](https://doi.org/10.5962/bhl.title.2154)
- FRICKE, R. 2008. Authorship, availability and validity of fish names described by Peter (Pehr) Simon Forsskål and Johann Christian Fabricius in the 'Descriptiones animalium' by Carsten Niebuhr in 1775 (Pisces). *Stuttgarter Beiträge zur Naturkunde A, Neue Serie* 1: 1–76. <http://www.naturkundemuseum-bw.de/sites/default/files/publikationen/serie-a/ans01-01fricke.pdf>
- FROESE, R. & D. PAULY (eds.). 2016. FishBase. World Wide Web electronic publication, version 08/2014. Accessed at <http://www.fishbase.org>, 31 March 2016.
- GEOFFROY SAINT-HILAIRE, E. 1802. Description d'un nouveau genre de poisson, de l'ordre des abdominaux. *Bulletin des Sciences*, par la Société Philomatique 3(61): 97–98.
- GEOFFROY ST. HILAIRE, E. 1809. Poissons du Nil, de la mer Rouge et de la Méditerranée. In: Description de l'Égypte ou recueil des observations et des recherches qui ont été faites en Égypte pendant l'expédition de l'Armée française, publié par les ordres de sa Majesté l'Empereur Napoléon le Grand. Paris: Imprimerie Impériale. *Histoire Naturelle* 1(1): 1–52. doi: [10.5962/bhl.title.62506](https://doi.org/10.5962/bhl.title.62506)
- GETAHUN, A. 2007. An Overview of the diversity and conservation status of the Ethiopian freshwater fish fauna. *Journal of Afro-tropical Zoology, Special issue*: 87–96.
- GERVAIS, F.L.P. 1848. Sur les animaux vertébrés de l'Algérie, envisagés sous le double rapport de la géographie zoologique et de la domestication. *Annales des Sciences Naturelles, Paris (Zoologie) (Série 3)* 10: 202–208. <http://biodiversitylibrary.org/page/35291492>
- GILL, T.N. 1862. On the West African genus *Hemichromis* and descriptions of new species in the museums of the Academy and Smithsonian Institution. *Proceedings of the Academy of Natural Sciences of Philadelphia* 14: 134–139. <http://biodiversitylibrary.org/page/4254470>
- GOLUBTSOV, A. S., S. E. CHERENKOV & F. TEFERA. 2012. High morphological diversity of the genus *Garra* in the Sore River (the White Nile Basin, Ethiopia): one more cyprinid species flock? *Journal of Ichthyology* 52: 817–820. doi: [10.1134/S0032945212110057](https://doi.org/10.1134/S0032945212110057)
- GMELIN, J.F. 1789. Caroli a Linné ... *Systema Naturae per regna tria naturae, secundum classes, ordines, genera, species; cum characteribus, differentiis, synonymis, locis. Editio decimo tertia. 1*(3): 1033–1516. doi: [10.5962/bhl.title.545](https://doi.org/10.5962/bhl.title.545)
- GOLUBTSOV, A.S. & P.B. BERENDZEN. 1999. Morphological evidence for the occurrence of two electric catfish (*Malapterurus*) species in the White Nile and Omo-Turkana systems (East Africa). *Journal of Fish Biology* 55: 492–505. doi: [10.1111/j.1095-8649.1999.tb00694.x](https://doi.org/10.1111/j.1095-8649.1999.tb00694.x)
- GOLUBTSOV, A.S. & A.A. DARKOV. 2008. A review of fish diversity in

- the main drainagesystems of Ethiopia based on data obtained by 2008; pp. 69–102, in: D.S. PAVLOV, YU. DGEBUADZE, A.A. DARKOV, A.S. GOLUBTSOV & M.V. MINA (eds.). Ecological and faunistic studies in Ethiopia, Proceedings of jubilee meeting “Joint Ethiopian-Russian Biological Expedition: 20 years of scientific cooperation.” Addis Ababa: JERBE.
- GOLUBTSOV, A.S. & M.V. MINA. 2003. Fish species diversity in the main drainage systems of Ethiopia: Current state of knowledge and research perspectives. *Ethiopian Journal of Natural Resources* 5 (2): 281–318.
- GOSSE, J.-P. 1984. POLYPTERIDAE; pp. 5–29, in: J. DAGET, J.-P. GOSSE & D.F.E. THYS VAN DEN AUDENAERDE (eds.). Check-list of the freshwater fishes of Africa (CLOFFA), Volume 1. Tervuren: MRAC, Paris: ORSTOM. [http://horizon.documentation.ird.fr/exl-doc/pleins\\_textes/divers13-06/15357.pdf](http://horizon.documentation.ird.fr/exl-doc/pleins_textes/divers13-06/15357.pdf)
- GOSSE, J.-P. 1986. Mochokidae; pp. 105–152, in: J. DAGET, J.-P. GOSSE & D.F.E. THYS VAN DEN AUDENAERDE (eds.). Check-list of the freshwater fishes of Africa (CLOFFA), Volume 2. Brussels: ISNB, Tervuren: MRAC and Paris: ORSTOM.
- GOSSE, J.-P. & D. PAUGY. 2003. Citharinidae; pp. 313–321, in: D. PAUGY, C. LÉVÊQUE & G.G. TEUGELS. (eds.). The fresh and brackish water fishes of West Africa, Vol. 1. Paris: IDR and Tervuren: MRAC.
- GOTELLI, N.G. & R.K. COLWELL. 2011. Estimating species richness; pp. 39–54, in: A.E. MAGURRAN & B.J. MCGILL (eds.). Biological diversity: frontiers in measurement and assessment. Oxford: Oxford University Press.
- GREENWOOD, P.H. 1974. The *Haplochromis* species (Pisces: Cichlidae) of Lake Rudolf, East Africa. *Bulletin of the British Museum (Natural History) Zoology* 27(3): 141–165.
- GREENWOOD, P.H. 1994. Bonytongues and their allies; pp. 80–84, in: J.P. PAXTON & W.N. ESCHMEYER (eds.). *Encyclopedia of fishes*. San Diego: Academic Press.
- GÜNTHER, A. 1864. Catalogue of the fishes in the British Museum. Catalogue of the Physostomi, containing the families Siluridae, Characinidae, Haplochitonidae, Sternoptychidae, Scopelidae, Stomiatidae in the collection of the British Museum. 5: 1–455. <http://www.biodiversitylibrary.org/bibliography/8809>
- GÜNTHER, A. 1896. Report on a collection of fishes made by Dr. A. Donaldson Smith during his expedition to Lake Rudolf. *Proceedings of the Zoological Society* 1896: 217–224. <http://biodiversitylibrary.org/page/31200204>
- HABTESELASSIE, R. 2012. Fishes of Ethiopia. Annotated checklist with pictorial identification guide. Addis Ababa: Ethiopian Fisheries and Aquatic Sciences Association. 250 pp.
- HABTESELASSIE, R., E. MIKSCHI, H. AHNELT & H. WAIDBACHER. 2010. *Garra chebera*, a new species of cyprinid fish from an isolated basin in Ethiopia (Teleostei: Cyprinidae). *Annalen des Naturhistorischen Museums in Wien. Serie B für Botanik und Zoologie* 111: 43–53. <http://www.jstor.org/stable/41767450>
- HAMBLYN, E.L. 1962. A note on Lake Rudolf. East African Freshwater Fisheries Research Organization, Annual Report 1962: 46–47.
- HAMMER, Ø., D.A.T. HARPER & P.D. RYAN. 2001. PAST: Paleontological statistics software package for education and data analysis. *Palaeontologia Electronica* 4(1): 9pp. Accessed at [http://palaeo-electronica.org/2001\\_1/past/issue1\\_01.htm](http://palaeo-electronica.org/2001_1/past/issue1_01.htm), 30 April 2015.
- HARDMAN, M. 2008. A new species of *Chrysiichthys* (Siluriformes: Claroteidae) from Lake Turkana, Kenya. *Proceedings of the Academy of Natural Sciences of Philadelphia* 157: 25–36. <http://www.jstor.org/stable/27667781>
- HARVEY, C.P.D. & A.T. GROVE 1982. A prehistoric source of the Nile. *The Geographical Journal* 148: 327–336. doi: [10.2307/633150](https://doi.org/10.2307/633150)
- HASSELQUIST, F. 1757. *Fredric Hasselquists M.D., Societ. Reg. Scient. Upsal. and Stockholm Soc., Iter Palæstinum eller resa til heliga landet, förrättad ifrån år 1749 til 1752, med besfrikningar, rön, anmärkningar öfverde märkvärdigaste naturalier, på Hennes Kongl. Maj:ts befallning, utgiven af Carolus Linnæus. Lars Salvius, Stockholm. Iter Palæstinum eller resa til heliga landet, förrättad ifrån år 1749 til 1752. 619 pp. <http://echo.mpiwg-berlin.mpg.de/MPIWG:55H51MFO>*
- HECKEL, J.J. 1847. Naturhistorischer Anhang. In: Russegger, J. von: Reisen in Europa, Asien und Afrika, ... unternommen in den Jahren 1835 bis 1841. E. Schweizerbart'sche Verlagshandlung, Stuttgart. 2 (3): 207–357.
- HECKEL, J.J. 1851. Ueber eine neue Fisch-Species aus dem Weissen Nil, *Propterus aethiopicus*. *Sitzungsberichte der Kaiserlichen Akademie der Wissenschaften. Mathematisch-Naturwissenschaftliche Classe* 6(2): 685–689.
- HOPKINS, C.D. 1999. Design features for electric communication. *The Journal of Experimental Biology* 202 (10):1217–1228. <http://www.nbb.cornell.edu/neurobio/hopkins/Reprints/JEB2093.PDF>
- HOPSON, J. 1982. The biology of *Alestes baremose* (Joannis) in Lake Turkana; pp. 767–787, in: A.J. HOPSON (ed.). Lake Turkana: a report on the findings of the Lake Turkana project 1972–1975, Volume 3. London: Overseas Development Administration.
- HOPSON, A.J. & J. HOPSON. 1982. The fishes of Lake Turkana with a description of three new species *Alestes ferox* sp. nov., *Alestes minutus* sp. nov. (Pisces: Cyprinidae) and *Barbus turkanae* sp. nov. (Pisces: Cyprinidae); pp. 283–347, in: A.J. HOPSON (ed.). Lake Turkana: A report on the findings of the Lake Turkana Project 1972–1975, Volume 1. London: Overseas Development Administration.
- HUBER, J.H. 1999. Updates to the phylogeny and systematics of the African lampeye schooling cyprinodonts (Cyprinodontiformes: Aplochelthyinae). *Cybiurn* 23(1): 53–77. [http://sfi.mnhn.fr/cybiurn/numeros/1999/231/08-Huber\[231\]53-77.pdf](http://sfi.mnhn.fr/cybiurn/numeros/1999/231/08-Huber[231]53-77.pdf)
- JOANNIS, L. de 1835. Observations sur les poissons du Nil, et description de plusieurs espèces nouvelles. *Magasin de Zoologie* 1835 (5 année): 53 pp.
- JOST, L., A. CHAO & R.L. CHAZDON. 2011. Compositional similarity and  $\beta$  (beta) diversity; pp. 66–84, in: A.E. MAGURRAN and B.J. MCGILL (eds.). Biological diversity: frontiers in measurement and assessment. New York: Oxford University Press Inc.
- KÄLLQVIST, T., L. LIEN & D. LITI. 1988. Lake Turkana: limnological study 1985–1988. Norwegian Institute for Water Research (NIVA), Kenya Marine and Fisheries Research Institute (KMFRI). NIVA Report No. 0-85313. Oslo: Norwegian Institute for Water Research. 98 pp.
- KOLDING, J. 1989. The fish resources of Lake Turkana and their environment: a thesis for Cand. Scien. degree in Fisheries Biology and Final Report of Ken-043 in Trial Fishery of 1986–1987 [PhD dissertation]. Bergen: University of Bergen, Department of Fisheries Biology. 262 pp.
- LAAN, R.V.D., W.N. ESCHMEYER & R. FRICKE. 2014. Family-group names of Recent fishes. *Zootaxa* 3882(2): 001–230. <http://www.mapress.com/zootaxa/2014/f/z03882p230.pdf>
- LACEPÈDE, B.G.E. 1803. Histoire naturelle des poissons 5: 1–803. doi: [10.5962/bhl.title.6882](https://doi.org/10.5962/bhl.title.6882)
- LALÈYÈ, P.A. 2006. Length-weight and length-length relationships of fishes from the Ouémé River in Bénin (West Africa). *Journal of Applied Ichthyology* 22: 330–333. doi: [10.1111/j.1439-0426.2006.00752.x](https://doi.org/10.1111/j.1439-0426.2006.00752.x)
- LEACH, W.E. 1818. A general notice of the animals taken by Mr. John Cranch, during the expedition to explore the source of the River Zaire; pp. 407–419, in: J. MURRAY. Narrative of an expedition to explore the River Zaire, usually called the Congo, in South Africa, in 1816, London. doi: [10.5962/bhl.title.15375](https://doi.org/10.5962/bhl.title.15375)
- LÉVÊQUE, C. 1990. Cyprinidae; pp. 269–361, in: C. LÉVÊQUE, D. PAUGY & G.G. TEUGELS. (eds.). Faune des poissons d'eaux douces et saumâtres d'Afrique de l'Ouest, Tome I. Collection Faune Tropicale 28. Tervuren: MRAC and Paris: ORSTOM.
- LÉVÊQUE, C. & J. DAGET. 1984. Cyprinidae; pp. 217–342, in: J.

- DAGET, J.-P. GOSSE & D.F.E. THYS VAN DEN AUDENAERDE. (eds.). Check-list of the freshwater fishes of Africa (CLOFFA), Volume 1. ORSTOM: Paris and Tervuren: MRAC.
- LÉVÊQUE, C., D. PAUGY & G.G. TEUGELS. 1991. Annotated check-list of the freshwater fishes of the Nilo-Sudan river basins in Africa. *Revue d'Hydrobiologie Tropicale* 24(2): 131–154.
- LINNAEUS, C. 1757. *Iter Palæstinum eller resa til heliga landet, förrättad ifrån år 1749 til 1752, med besfrikningar, rön, anmärkningar öfverde märkvärdigaste naturalier, på Hennes Kongl. Maj:ts befällning, utgiven af Carolus Linnæus. Lars Salvius, Stockholm. Iter Palæstinum eller resa til heliga landet, förrättad ifrån år 1749 til 1752.* 619 pp.
- LINNAEUS, C. 1758. *Systema naturae per regna tria naturae, secundum classes, ordines, genera, species, cum characteribus, differentiis, synonymis, locis. Tomus I. Editio decima, reformata. Holmiae.* 824 pp. <http://www.biodiversitylibrary.org/item/10277>
- LINNAEUS, C. 1762. Mitglieds, Reise nach Palästina in dem Jahren von 1749 bis 1752. Auf Befehl Ihro Majestät der Königin von Schweden herausgegeben von Carl Linnæus. Aus dem Schwedischen [übersetzt von T. H. GADEBUSCH]. Johann Christian Koppem Rostok. 606 pp.
- MAGURRAN, A. 1988. *Ecological diversity and its measurement.* Princeton: Princeton University Press. 179 pp. doi: [10.1007/978-94-015-7358-0](https://doi.org/10.1007/978-94-015-7358-0)
- MAGURRAN, A.E. 2004. *Measuring biological diversity.* Oxford: Blackwell Science. 256 pp.
- MANN, M.J. 1964. Report on a fisheries survey of Lake Rudolf, Kenya; pp. 53–62, East African Freshwater Fisheries Research Organization. Annual Report 1962/63. Uganda: East African Common Services Organization.
- MAURER, B.A. & B.J. MCGILL. 2011. Measurement of species diversity; pp. 55–65, in A.E. MAGURRAN & B.J. MCGILL (eds.). *Biological diversity: frontiers in measurement and assessment.* New York: Oxford University Press Inc.
- MO, T.-P. 1991. *Anatomy, relationships and systematics of the Bagridae (Teleostei: Siluroidei) — with a hypothesis of siluroid phylogeny.* Koenigstein: Theses Zoologicae 17, Koeltz Scientific Books.
- MOHAMMED, T. 2014. *Fish diversity, relative abundance and some related environmental parameters of Gilgel Gibe and Gojeb rivers, Omo-Turkana Basin, Southwest Ethiopia [MSc dissertation].* Jimma: Jimma University, Department of Biology. 64 pp.
- NAGELKERKE, L.A.J. & F.A. SIBBING. 1997. A revision of the large barbs (*Barbus* spp., Cyprinidae, Teleostei) of Lake Tana, Ethiopia, with a description of seven new species; pp. 105–170, in: L.A.J. NAGELKERKE. (ed.). *The barbs of Lake Tana, Ethiopia: morphological diversity and its implications for taxonomy, trophic resource partitioning and fisheries.* The Netherlands: Wageningen University.
- NELSON, J.S. 2006. *Fishes of the World.* 4<sup>th</sup> edition. Hoboken: John Wiley & Sons. 601 pp.
- NICHOLS, J.T. 1923. A new wrasse and two new cichlids from northeast Africa. *American Museum Novitates* 65: 1–4.
- NORRIS, S.M. 2003. Malapteruridae; pp. 174–194, in: C. LÉVÊQUE, D. PAUGY & G.G. TEUGELS (eds.). *Faune des poissons d'eaux douces et saumâtres de l'Afrique de l'Ouest, Tome 2. Coll. Faune et Flore tropicales* 40. Tervuren: MRAC, Paris: MNHN and Paris: IRD.
- OLAOSBIKAN, B.D. & A. RAJI. 1998. *Field guide to Nigerian freshwater fishes.* New Bussa: Federal College of Freshwater Fisheries Technology. 106 pp.
- OLDEN, J.D. 2006. Biotic homogenization: a new research agenda for conservation biogeography. *Journal of Biogeography* 33: 2027–2039. doi: [10.1111/j.1365-2699.2006.01572.x](https://doi.org/10.1111/j.1365-2699.2006.01572.x)
- PAUGY, D. 2010. The Ethiopian subregion fish fauna: an original patchwork with various origins. *Hydrobiologia* 649: 301–315. doi: [10.1007/s10750-010-0273-0](https://doi.org/10.1007/s10750-010-0273-0)
- PAUGY, D. 1984. Characidae; pp. 140–183, in: J. DAGET, J.-P. GOSSE & D.F.E. THYS VAN DEN AUDENAERDE (eds.). *Check-list of the freshwater fishes of Africa (CLOFFA), Volume 1.* Tervuren: MRAC, Paris: ORSTOM.
- PAUGY, D. & S.A. SCHAEFFER. 2007. Alestidae; pp. 347–411, in: M. L.J. STIASSNY, G. G. TEUGELS & C.D. HOPKINS (eds.). *Fishes of fresh and brackish waters of Lower Guinea and West-Central Africa, Volume 1.* Tervuren: MRAC.
- PELLEGRIN, J. 1905. Poissons d'Abyssinie et du Lac Rudolphe (Collection Maurice de Rothschild). *Bulletin du Muséum National d'Histoire Naturelle* 11: 290–298.
- PELLEGRIN, J. 1935. *Pisces. Mission Scientifique de l'Omo* 2: 131–139.
- PETERS, W.C.H. 1852. Diagnosen von neuen Flussfischen aus Mossambique. *Monatsberichte der Königlichen Preussischen Akademie der Wissenschaften zu Berlin* 1852: 275–276, 681–685.
- PROKOFIEV, A.M. & A.S. GOLUBTSOV. 2013. Revision of the loach genus *Afromacheilus* (Teleostei: Balitoridae: Nemacheilinae) with description of a new species from the Omo-Turkana basin, Ethiopia. *Ichthyological Exploration of Freshwaters* 24(1): 1–14.
- REID, G.M. 1985. A revision of African species of *Labeo* (Pisces: Cyprinidae) and redefinition of the genus. Braunschweig: Verlag von J. Cramer. 322 pp.
- RISCH, L. 1986. Bagridae; pp. 2–35, in: J. DAGET, J.-P. GOSSE & D.F.E. THYS VAN DEN AUDENAERDE (eds.). *Check-list of the freshwater fishes of Africa (CLOFFA), Volume 2.* Bruxelles/Tervuren: MRAC, Paris: ORSTOM. [http://horizon.documentation.ird.fr/exl-doc/pleins\\_textes/divers13-06/23347.pdf](http://horizon.documentation.ird.fr/exl-doc/pleins_textes/divers13-06/23347.pdf)
- ROBERTS, T.R. 1975. Geographical distribution of African freshwater fishes. *Zoological Journal of the Linnean Society* 57(4): 249–319. doi: [10.1111/j.1096-3642.1975.tb01893.x](https://doi.org/10.1111/j.1096-3642.1975.tb01893.x)
- RÜPPELL, W.P.E.S. 1829–1835. Beschreibung und Abbildung mehrerer neuer Fische, im Nil entdeckt. Brönnner, Frankfurt am Main 1829: 1–12.
- RÜPPELL, W.P.E.S. 1832. Fortsetzung der Beschreibung und Abbildung mehrerer neuer Fische, im Nil entdeckt. Frankfurt am Main: Brönnner. 1–14. <http://www.biodiversitylibrary.org/bibliography/14871>
- RÜPPELL, W. P. E. S. 1835. Neuer Nachtrag von Beschreibungen und Abbildungen neuer Fische, im Nil entdeckt. *Museum Senckenbergianum: Abhandlungen aus dem Gebiete der beschreibenden Naturgeschichte, von Mitgliedern der Senckenbergischen Naturforschenden Gesellschaft in Frankfurt am Main* 2(1): 1–28.
- SEBEGERS, L., L. DE VOS & D.O. OKEYO. 2003. Annotated checklist of the freshwater fishes of Kenya (excluding the lacustrine haplochromines from Lake Victoria). *Journal of East African Natural History* 92: 11–47. doi: [http://doi.org/b4m4tjv](https://doi.org/http://doi.org/b4m4tjv)
- SKELTON, P.H. 1993. *A complete guide to the freshwater fishes of southern Africa.* South Africa: Southern Book Publishers. 388 pp.
- SOLOW, A.R. 1993. A simple test for change in community structure. *Journal of Animal Ecology* 62(1): 191–193. DOI: [10.2307/5493](https://doi.org/10.2307/5493).
- STEINDACHNER, F. 1870. Zur Fischfauna des Senegal. Dritte Abtheilung. *Sitzungsberichte der Kaiserlichen Akademie der Wissenschaften. Mathematisch-Naturwissenschaftliche Classe* 61(1): 533–583. <http://www.biodiversitylibrary.org/page/35520772>
- STIASSNY, M.L.J. & A. GETAHUN. 2007. An overview of labeonin relationships and the phylogenetic placement of the Afro-Asian genus *Garra* Hamilton, 1922 (Teleostei: Cyprinidae), with the description of five new species of *Garra* from Ethiopia, and a key to all African species. *Zoological Journal of the Linnean Society* 150: 41–83. doi: [10.1111/j.1096-3642.2007.00281.x](https://doi.org/10.1111/j.1096-3642.2007.00281.x)
- SUGUA, V.O. (1987). On a new species of electric catfish from Kainji, Nigeria, with some observations on its biology. *Journal of Fish Biology* 30: 75–89. doi: [10.1111/j.1095-8649.1987.tb05734.x](https://doi.org/10.1111/j.1095-8649.1987.tb05734.x)
- TEDLA, S. 1973. *Freshwater fishes of Ethiopia.* Addis Ababa: Addis Ababa University. 101 pp.
- TREWAVAS, E. 1933. Scientific results of the Cambridge Expedition to the East African Lakes, 1930–1. 11. The cichlid fishes. *The Journal*

- of the Linnaean Society of London. *Zoology* 38 (259): 309–341. doi: [10.1111/j.1096-3642.1933.tb00062.x](https://doi.org/10.1111/j.1096-3642.1933.tb00062.x)
- TREWAVAS, E. 1973. On the cichlid fishes of the genus *Pelmatochromis* with proposal of a new genus for *P. congicus*; on the relationship between *Pelmatochromis* and *Tilapia* and the recognition of *Sarotherodon* as a distinct genus. *Bulletin of British Museum (Natural History) Zoology* 25: 3–26. <http://www.biodiversitylibrary.org/page/26494734>
- TREWAVAS, E. & G.G. TEUGELS. 1991. *Oreochromis*; pp. 307–346, in: J. DAGET, J. -P. GOSSE, & D.F.E. THYS VAN DEN AUDENAERDE (eds.). *Check-list of the freshwater fishes of Africa (CLOFFA)*, Volume 4. Bruxelles: ISNB, Tervuren:MRAC, Paris: ORSTOM. <http://www.nhbs.com/title/136608/check-list-of-the-freshwater-fishes-of-africa-volume-4-catalogue-des-poissons-deau-douce-dafrique-cloffa-4>
- UNEP (UNITED NATIONS ENVIRONMENT PROGRAM). 2010. *Africa Water Atlas*. Nairobi: UNEP, Division of Early Warning and Assessment (DEWA). 314 pp. [http://www.unep.org/pdf/africa\\_water\\_atlas.pdf](http://www.unep.org/pdf/africa_water_atlas.pdf)
- VAILLANT, L.L. 1895. Sur la dentition des synodontis et diagnose d'espèces nouvelles. *Bulletin de la Société Philomathique de Paris*. 16: 47–48.
- VALENCIENNES, A. 1840. Histoire naturelle des poissons; in G. CUVIER AND A. VALENCIENNES (eds). Tome quinzième. Suite du livre dix-septième. Siluroïdes. 15: 1–540.
- VALENCIENNES, A. 1847. Histoire naturelle des poissons. Tome dix-neuvième. Suite du livre dix-neuvième. Brochets ou Lucioïdes. Livre vingtième. De quelques familles de Malacoptérygiens, intermédiaires entre les Brochets et les Clupes. P. Bertrand, Paris. 19: 554–590.
- VELLEND, M., L.J. HARMON, J.L. LOCKWOOD, M.M. MAYFIELD, A.R. HUGHES, et al. 2007. Effects of exotic species on evolutionary diversification. *Trends in Ecology and Evolution* 22: 481–488. doi: [10.1016/j.tree.2007.02.017](https://doi.org/10.1016/j.tree.2007.02.017)
- VELPURI, N.M., G.B. SENAY & K.O. ASANTE. 2012. A multi-source satellite data approach for modelling Lake Turkana water level: calibration and validation using satellite altimetry data. *Hydrology and Earth System Science* 16:1–18. doi: [10.5194/hess-16-1-2012](https://doi.org/10.5194/hess-16-1-2012)
- VINCIGUERRA, D. 1895. Esplorazione del Giuba e dei suoi affluenti compiuta dal Cap. V. Bottego durante gli anni 1892–93 sotto gli auspicii della Società geografica Italiana. III. Pesci. *Annali del Museo Civico di Storia Naturale di Genova (Serie 2)* 15: 21–60.
- WELTER-SCHULTES, F.W. & V. FEUERSTEIN. 2008. Nomenclatural notes on *Torpedo Chondrichthyes*: *Torpedinidae* and some other early established fish taxa (Actinopterygii: Molidae, Elegendinopidae and Citharinidae). *Species, Phylogeny and Evolution* 1: 141–145.
- WHITTAKER, R.H. 1972. Evolution and measurement of species diversity. *Taxon* 21: 213–251. doi: [10.2307/1218190](https://doi.org/10.2307/1218190)
- WILSON, M.V. & A. SHMIDA. 1984. Measuring beta diversity with presence-absence data. *Journal of Ecology* 72(3): 1055–1062. doi: [10.2307/2259551](https://doi.org/10.2307/2259551)
- WORTHINGTON, E.B. 1931. Cambridge expedition to the East African lakes. *Nature* 127: 337–338. doi: [10.1038/127337b0](https://doi.org/10.1038/127337b0)
- WORTHINGTON, E.B. 1932. Scientific results of the Cambridge expedition to the East African lakes, 1930–31. 2. Fishes other than Cichlidae. *Journal of the Linnaean Society of London, Zoology* 38: 121–134. doi: [10.1111/j.1096-3642.1932.tb00697.x](https://doi.org/10.1111/j.1096-3642.1932.tb00697.x)
- WORTHINGTON, E.B. & C.K. RICHARDO. 1936. Scientific results of the Cambridge expedition to the East African lakes, 1930–31. No. 15. The fish of Lake Rudolf and Lake Baringo. *Journal of the Linnaean Society of London, Zoology* 39: 353–389. doi: [10.1111/j.1096-3642.1936.tb00472.x](https://doi.org/10.1111/j.1096-3642.1936.tb00472.x)

**Authors' contributions:** MW collected the specimens and wrote the text; MW and AG identified the species and made the analysis; both authors reviewed and approved the manuscript.

**Received:** 11 March 2016

**Accepted:** 16 January 2017

**Academic editor:** Arturo Angulo Sibaja

## APPENDIX

A bracketed artificial identification key for the fish species in Ethiopian waters of the Omo-Turkana basin (see Table 4); numbers in parenthesis refer to the lead characters from which the respective couplets follow.

The characters used to develop the key are relatively simple and conspicuous to facilitate in-field identification of the basin's fish species. The key is intended for identification of fish species in Omo-Turkana basin within the limit of Ethiopia and thus its application outside this range might be limited.

- |                      |   |   |   |
|----------------------|---|---|---|
| 1                    | a | 8 or more closely spaced finlets along back; scales thick, interlocking and rhomboid; body elongate . . . . .   | 2   |
| 1                    | b | No dorsal finlets; body scales present or absent, if present cycloid or ctenoid not rhomboid . . . . .  | 3   |
| 2(1 <sup>a</sup> )   | a | 8–11 dorsal finlets (often 9); 53–61 (often 57) scales in the lateral line; body rather grayish . . . . .   | <i>Polypterus senegalus</i> (Figure 3b)   |
| 2                    | b | 13–18 (often 17) dorsal finlets; 63–70 (often 67 scales) in the lateral line; body rather dark brownish . . . . .   | <i>Polypterus bichir</i> (Figure 3a)      |
| 3(1 <sup>b</sup> )   | a | Body often covered with various types of overlapping scales, or with small thin spines instead of scales . . . . .  | 4   |
| 3                    | b | Body naked, without scales or spines . . . . .  | 46  |
| 4(3 <sup>a</sup> )   | a | Jaw teeth present; barbels absent; adipose fin present or absent; caudal fin forked, truncate or round . . . . .  | 5   |
| 4                    | b | No teeth on jaws; barbels present or absent; no adipose fin; caudal fin forked . . . . .  | 28  |
| 5(4 <sup>a</sup> )   | a | Body scales large and bony; single uninterrupted lateral line; mouth terminal . . . . .   | <i>Heterotis niloticus</i> (Figure 3c)    |
| 5                    | b | Body scales small and thin or absent; lateral line (when present), single and continuous or two interrupted (incomplete) lines; mouth position variable . . . . .                           | 6   |
| 6(5 <sup>b</sup> )   | a | Small mouth, with restricted gape (opening), terminally located often on elongated snout; thin cycloid scales on the body, none on head; caudal fin deeply forked; no adipose fin . . . . . | 7   |
| 6                    | b | Large mouth, with wide gape, variably located on a non-elongated snout; body scales cycloid or ctenoid; caudal fin forked, truncate or round; adipose fin present or absent . . . . .       | 13  |
| 7(6 <sup>a</sup> )   | a | Snout very elongated resembling a proboscis; dorsal fin base twice as long as anal fin base, its origin nearer to head than to caudal . . . . .   | 8   |
| 7                    | b | Snout not proboscis-like; dorsal fin base is as long as, or shorter than, anal fin base, both located posteriorly on body nearer to caudal . . . . .  | 9   |
| 8(7 <sup>a</sup> )   | a | Proboscis-like snout straight, not curved downward; dorsal fin rays > 75 . . . . .  | <i>Mormyrus caschive</i> (Figure 3d)      |
| 8                    | b | Proboscis-like snout slightly curved downward; dorsal fin rays < 75 . . . . .   | <i>Mormyrus kannume</i> (Figure 3e)       |
| 9(7 <sup>b</sup> )   | a | Dorsal fin base much shorter than anal fin base . . . . .   | <i>Hyperopterus bebe</i> (Figure 3g)      |
| 9                    | b | Dorsal fin base more or less as long as anal fin base . . . . .   | 10  |
| 10(9 <sup>b</sup> )  | a | Mental swelling on chin well developed . . . . .  | <i>Marcusenius cyprinoides</i>            |
| 10                   | b | No mental swelling on chin . . . . .  | 11  |
| 11(10 <sup>b</sup> ) | a | Snout moderately long; head depressed; body elongate, anterior body tinged with dark reddish color; more than 10 teeth on the upper jaw, 14 on lower jaw . . . . .                          | <i>Mormyrops anguilloides</i> (Figure 3f) |
| 11                   | b | Snout relatively short; head compressed; body relatively deep; less than 7 teeth in the middle of upper jaw, 10 on lower jaw . . . . .  | 12  |
| 12(11 <sup>b</sup> ) | a | Dorsal fin originating well in advance of anal fin origin, relatively long with up to 36 rays; dorsal profile tends to be concave . . . . .   | <i>Pollimyrus petherici</i> (Figure 3h)   |
| 12                   | b | Dorsal fin originating slightly behind anal fin origin, relatively short with up to 22 rays; dorsal profile rather straight . . . . .   | <i>Pollimyrus isidori</i>                 |
| 13(6 <sup>b</sup> )  | a | Small fleshy adipose fin behind the rayed dorsal fin; caudal fin forked to lunate; dorsal and anal fins with soft rays only . . . . .   | 14  |
| 13                   | b | No adipose fin; caudal fin truncate or round; dorsal and anal fins with or without spiny rays . . . . .   | 23  |
| 14(13 <sup>a</sup> ) | a | Lateral line located ventrally below midline of flanks; mouth terminal, with robust unicuspid or pluricuspid teeth on both jaws;  |   |

- body elongate, covered always with cycloid scales. . . . . 15
- 14** **b** Lateral line located in the middle of the flanks; mouth position variable, with fine, flexible teeth on the lip or jaw; body usually deep, covered with cycloid or ctenoid scales . . . . . 21
- 15**(14<sup>a</sup>) **a** All teeth large and unicuspid, in a single row on each jaw, visible when mouth is closed; adipose eyelid present . . . . . 16
- 15** **b** Teeth mainly pluricuspid, in two rows on each jaw, not visible when mouth is closed; inner row of the lower jaw only with two small conical teeth; inner row of premaxilla teeth molariform; adipose eyelid present or absent . . . . . 17
- 16**(15<sup>a</sup>) **a** Tip of dorsal fin, inner edges of caudal fin, and adipose fin black  
*Hydrocynus vittatus* (Figure 3i)
- 16** **b** Tip of dorsal fin, inner edges of caudal fin, and adipose fin uniformly grayish. . . . . *Hydrocynus forkahlitii* (Figure 3j)
- 17**(15<sup>b</sup>) **a** Inner row of premaxilla teeth without cavity; black humeral spot and caudal blotch absent; gill rakers short; less than 35 scales in the lateral line. . . . . *Micralestes elongatus*
- 17** **b** Inner row of premaxilla teeth with cavity; black humeral spot and caudal blotch present or absent . . . . . 18
- 18**(17<sup>b</sup>) **a** Adipose eyelid present; black humeral spot or caudal blotch absent; more than 38 scales in the lateral line. . . . . 19
- 17** **b** Adipose eyelid absent or rudiment; black humeral spot usually and caudal blotch always present; scales in the lateral line fewer than 35 . . . . . 20
- 19**(18<sup>a</sup>) **a** Dorsal fin equidistant between ventral and anal fins or nearer to the latter; gill rakers on the lower half of first gill arch no less than 30; anal fin moderately long, with 25–30 branched rays . . . . . *Alestes baremoze* (Figure 3k)
- 19** **b** Dorsal fin slightly behind the origin of the pelvic fin; gill rakers on the lower half of first gill arch no more than 27; anal fin relatively short, with 22–26 branched rays . . . . . *Alestes dentex*
- 20**(18<sup>b</sup>) **a** Dorsal fin distantly located behind the pelvic fin; head flattened; teeth in outer row of premaxilla 8–14; sometimes a long orange band running along the body; fins orange-red to pink . . . . . *Brycinus macrolepidotus*
- 20** **b** Dorsal fin above or slightly in advance of the pelvic fin; head round; teeth in outer row of premaxilla 8; lateral side silvery; unpaired fins bright red; paired fins colorless or, at most, light orange  
*Brycinus nurse* (Figure 3l)
- 21**(14<sup>b</sup>) **a** Mouth small, terminal, with thin, flexible, unicuspid teeth embedded in lip tissue; body very deep, compressed, covered with cycloid scales . . . . . *Citharinus citharus intermedius* (Figure 3m)
- 21** **b** Mouth small, subinferior or inferior, with fine, bicuspid teeth on the jaws; body less deep, covered with ctenoid scales. . . . . 22
- 22**(21<sup>b</sup>) **a** Snout moderately long; teeth small, bicuspid usually in two rows on each jaw; dorsal fin long with more than 22 rays; more than 90 lateral line scales. . . . . *Distichodus nefasch* (Figure 3n)
- 22** **b** Snout short; teeth small, bicuspid usually in one row on each jaw; dorsal fin short with less than 13 rays; lateral line scales fewer than 55 . . . . . *Nannocharax niloticus*
- 23**(13<sup>b</sup>) **a** Dorsal and anal fins without spiny rays; lateral line absent . . . . . *Aplocheilichthys jeanneli*
- 23** **b** Dorsal and anal fins with spiny rays; lateral line present or absent . . . . . 24
- 24**(23<sup>b</sup>) **a** No pelvic fins; dorsal fin short, located in the posterior body part; body scaleless, head and body covered with small thin spines; lateral line absent; a pair of fused teeth at the front of each jaw; yellow longitudinal bands on the body . . . *Tetraodon lineatus* (Figure 4o)
- 24** **b** All rayed fins present; dorsal fin long, continuous or notched, its origin in the anterior part of the body; body with cycloid or ctenoid scales; lateral line present . . . . . 25
- 25**(24<sup>b</sup>) **a** Mouth terminal with villiform teeth on jaws; spinous dorsal fin long, deeply notched into anterior spiny and posterior mainly soft rayed portions; body scales ctenoid; single complete lateral line present; caudal fin round . . . . . *Lates niloticus* (Figure 4n)
- 24** **b** Mouth terminal with bicuspid teeth on the outer jaws; spinous dorsal fin long and continuous; body scales ctenoid or cycloid; 2 short, incomplete lateral lines; caudal fin truncate; blackish opercular spot . . . . . 26
- 26**(25<sup>b</sup>) **a** Gill rakers relatively short and thick, 8–12 on the lower half of the first gill arch; body scales often cycloid or feebly denticulate; scales between pectoral and pelvic fins same size as scales on the flanks; a black spot (tilapia mark) at the junction of the spinous and soft dorsal rays . . . . . *Coptodon zillii*
- b** Gill rakers relatively thin and long, 14–27 on the lower half of the first gill arch; body scales cycloid; scales between pectoral and pelvic fins smaller than those on the flanks; tilapia mark present or absent. . . . . 27
- 27**(26<sup>b</sup>) **a** Scales between pectoral and pelvic fins distinctly smaller than those on the body side; pectoral fins not reaching anal fin; dorsal fin with 29–33 total rays; dark vertical bars or stripes on the body and caudal fin . . . . . *Oreochromis niloticus* (Figure 4m)
- b** Scales between pectoral and pelvic fins not much smaller than scales on the flank; pectoral fins reaching anal fin; dorsal fin with 27–31 total rays . . . . . *Sarotherodon galilaeus*
- 28**(4<sup>b</sup>) **a** Mouth subinferior; 3 pairs of barbels; 7 branched dorsal-fin rays; the anterior and posterior nares (nostrils) well separated; body naked or with minute scales; bar-like spots on flanks usually of similar size . . . . . *Afromemacheilus kaffa*
- b** Mouth terminal to inferior; barbels 1–2 pairs when present; spine-like leading rays in dorsal fin in some species; body covered with cycloid scales, head naked. . . . . 29
- 29**(28<sup>b</sup>) **a** Branched anal fin rays no more than 7; mouth inferior, subinferior or terminal; barbels present; lateral line in the middle of the caudal peduncle . . . . . 30
- b** Branched anal fin rays no less than 9; mouth often terminal or rarely subinferior; barbels absent; lateral line along middle or lower part of the caudal peduncle . . . . . 43
- 30**(29<sup>a</sup>) **a** Mouth typically inferior, with well developed sucker-like lips, 1 or 2 pairs of minute barbels; dorsal fin origin well in advance of the origin of ventral fins . . . . . 31
- b** Mouth inferior, subinferior or terminal; lips thin or thick but never sucker-like; 2 pairs of barbels; dorsal fin origin above or slightly behind or in advance of the origin of the ventral fins . . . . . 37
- 31**(30<sup>a</sup>) **a** Lower lip modified posteriorly into a well developed round mental disc, with free lateral and posterior margins; 2 pairs (nasal and maxillary) of small barbels . . . . . 32
- b** Both upper and lower lips well developed into a sucker-like structure, but not forming a mental disc; 1 pair of small maxillary barbels . . 33
- 32**(31<sup>a</sup>) **a** No externally visible scales on the chest, belly and post-pelvic regions; 36–38 lateral line scales in the lateral line . . . . . *Garra dembeensis*
- b** At least some scattered scales on the chest, belly and post-pelvic regions; 34–35 lateral line scales . . . . . *Garra quadrimaculata*
- 33**(31<sup>b</sup>) **a** Eye lateral, visible both from below and above; rostral flap attached at sides, its free margin smooth; transverse plicae of papillae present or absent on the inner sides of the lips; dorsal fin with more than 10 branched rays . . . . . 34
- b** Eye supero-lateral visible only from above; rostral flap detached at sides, its free margin feebly denticulate; transverse plicae of papillae present on the inner sides of the lips; dorsal fin with 9–10 branched rays . . . . . 36
- 34**(33<sup>a</sup>) **a** Branched dorsal fin rays more than 14, its upper edge often more or less concave; 41–45 lateral line scales; no transverse plicae of papillae on the inner sides of the lips . . *Labeo niloticus* (Figure 3p)
- b** Branched dorsal fin rays not more than 14, its upper edge convex or slightly straight; at least 36 lateral line scales. . . . . 35
- 35**(34<sup>b</sup>) **a** Labial folds rather poorly developed; 40–44 scales in the lateral line; no transverse plicae of papillae on the inner sides of the lips . . . . . *Labeo horie* (Figure 3o)
- b** Labial folds relatively well developed; 36–40 scales in the lateral line; transverse plicae of papillae present on the inner sides of the lips . . . . . *Labeo coubie* (Figure 4a)
- 36**(33<sup>b</sup>) **a** Eye relatively large (OD, orbit diameter > 18% HL, head length); transverse groove above the snout present; scales in the lateral line 38–42. . . . . *Labeo forskalii*
- b** Eye relatively small (OD < 18% HL); no transverse groove above the snout; scales in the lateral line 35–39 . . . . . *Labeo cylindricus*
- 37**(30<sup>b</sup>) **a** Radiating or divergent striae in the outer parts of the scales; 7 or 8 branched dorsal fin rays; fewer than 10 gill rakers in the lower limb of the first gill arch; mouth terminal or subinferior; 2 pairs of barbels in adults . . . . . 38
- b** Parallel striae in the outer parts of the scales; 9 or 10 branched dorsal fin rays; up to 20 gill rakers in the lower limb of the first gill arch; mouth inferior or slightly inferior; 2 pairs of barbels . . . . 41
- 38**(37<sup>a</sup>) **a** Lateral line incomplete; mouth terminal; dorsal fin with III 8 rays, last unbranched ray not serrated; flanks with up to 5 spots . . . . . *Enteromius stigmatopygus*
- b** Lateral line complete . . . . . 39
- 39**(38<sup>b</sup>) **a** Last unbranched dorsal fin ray serrated on its posterior side;

- mouth terminal and oblique . . . . . *Enteromius paludinosus*
- b** Last unbranched dorsal fin ray not serrated on its posterior side; mouth subinferior . . . . . 40
- 40(39<sup>b</sup>) a** Barbels well developed; dorsal fin with III 7 rays; barbels relatively well developed, anterior one about 1.3–1.5 times eye diameter, posterior one about 1.75–2 times eye diameter . . . . . *Enteromius arambourgi*
- b** Dorsal fin with III 8 (rarely 7) rays; barbels relatively small, anterior one short only reaching to anterior margin of eye, posterior barbel reaching to posterior half of eye . . . . . *Enteromius perince*
- 41(37<sup>b</sup>) a** Lower lip forming large median lobe; upper lip well developed, its lobe curling back over the snout; mouth inferior . . . . . *Labeobarbus nedgia*
- b** Lower lip not forming a distinct median lobe or very small lobe; upper lip without lobes; mouth inferior or terminal. . . . . 42
- 42(41<sup>b</sup>) a** Mouth inferior; body very deep (31–38% SL, standard length); angular dorsal profile; dorsal fin, longer than head, the last unbranched non-serrated ray ossified into a massive spine, and upper fin border concave; 28–37 scales in the lateral line . . . . . *Labeobarbus bynni*
- b** Mouth terminal; body rather shallow (19–32% SL); less angular dorsal profile; dorsal fin, shorter than head; 30–36 scales in the lateral line . . . . . *Labeobarbus intermedius*
- 43(29<sup>b</sup>) a** Dorsal fin beginning slightly behind level of anal-fin origin; lateral line low on the caudal peduncle; mouth terminal and oblique . . 44
- b** Dorsal fin beginning distinctly before level of anal-fin origin; lateral line low or in the midline of caudal peduncle; mouth subinferior or terminal. . . . . 45
- 44(43<sup>a</sup>) a** 11–15 black vertical blotches on the flanks . . . . . *Raiamas senegalensis*
- b** No black vertical blotches on the flanks . . . . . *Chelaethiops bibie*
- 45(43<sup>b</sup>) a** Lateral line along midline of caudal peduncle; mouth subinferior . . . . . *Leptocypris niloticus*
- b** Lateral line low on the caudal peduncle; mouth terminal, extending to beyond the anterior margin of eye . . . . . *Neobola bottegoi*
- 46(3<sup>b</sup>) a** 3 pairs of barbels (maxillary and 2 pairs mandibular), adipose fin present. . . . . 47
- b** 4 pairs of barbels (nasal, maxillary and 2 pairs mandibular); adipose fin present or absent. . . . . 57
- 47(46<sup>a</sup>) a** Adipose fin rayed, followed by bony spines; series of bony scutes along each side of the back and belly; extremely shallow or slender caudal peduncle; caudal fin crescentic. . . . . *Andersonia leptura*
- b** Adipose fin fleshy, not followed by bony spines; no bony scutes on the body; caudal peduncle not extremely shallow; caudal fin nearly truncate, emarginated or deeply forked . . . . . 48
- 48(47<sup>b</sup>) a** Rayed dorsal fin absent; caudal fin nearly truncate; spinous rays absent. . . . . 49
- b** Rayed dorsal fin present; caudal fin emarginate or deeply forked; spinous rays in dorsal and pectoral fins . . . . . 50
- 49(48<sup>a</sup>) a** Pectoral fins placed low on the body, obliquely oriented; broad tooth patches on jaws . . . . . *Malapterurus minjiriya* (Figure 4h)
- b** Pectoral fins placed more dorsally, near the body mid-depth, vertically oriented; narrow crescent shaped tooth patches on jaws . . . . . *Malapterurus electicus*
- 50(48<sup>b</sup>) a** Caudal fin weakly emarginated, anterior nostrils tube-like and positioned on upper lip . . . . . 51
- b** Caudal fin deeply forked, anterior nostrils positioned on snout . . 52
- 51(50<sup>a</sup>) a** Relatively long and more pointed snout; maxillary barbels always shorter than the outer mandibular barbel, not extending beyond the posterior border of eye . . . . . *Auchenoglanis occidentalis* (Figure 4c)
- b** Relatively short and less pointed snout; maxillary barbels always longer than the outer mandibular barbel, extending beyond the posterior border of eye . . . . . *Auchenoglanis biscutatus* (Figure 4b)
- 52(50<sup>b</sup>) a** Mandibular barbels non-branched; eyes without free border; mouth inferior, surrounded by enlarged circular lip . . . . . *Chiloglanis niloticus*
- b** Mandibular barbels branched; eyes with free border; mouth inferior, sucker-like but lips not as enlarged as in *Chiloglanis niloticus* . . . 53
- 53(52<sup>b</sup>) a** Dorsal fin spine extends into very long filament, up to twice the length of the spine itself; soft rays not extending into filaments . . . . . *Synodontis filamentosus* (Figure 4i)
- b** Dorsal fin spine not extending into filament; first soft ray extending into a usually short filament . . . . . 54
- 54(53<sup>b</sup>) a** Dorsal fin spine smooth along anterior border except for a few apical or basal serrations; basal marginal membrane on maxillary barbel narrow or absent; the upper lobe of caudal fin not extending into a long filament . . . . . 55
- b** Dorsal fin spine with fine serrations along anterior margin; basal marginal membrane on maxillary barbel broad; the upper lobe of caudal fin often extending into a long filament. . . . . 56
- 55(54<sup>a</sup>) a** No basal marginal membrane on maxillary barbel; dorsal fin spine feebly serrated along posterior margin; body spots absent . . . . . *Synodontis schall* (Figure 4j)
- b** Basal marginal membrane on maxillary barbel distinct but narrow; dorsal fin spine rather strongly serrated along posterior margin; body covered with very small black spots, but none on caudal fin . . . . . *Synodontis frontosus*
- 56(54<sup>b</sup>) a** Dorsal fin spine coarsely serrated along posterior margin . . . . . *Synodontis sorex*
- b** Dorsal fin spine finely serrated along posterior margin . . . . . *Synodontis serratus*
- 57(46<sup>b</sup>) a** Caudal fin round; dorsal fin long, with 50 or more rays; anal fin long extending near to the caudal fin . . . . . 58
- b** Caudal fin forked; dorsal fin short, with not more than 11 rays; anal fin short, or long extending up to caudal . . . . . 59
- 58(57<sup>a</sup>) a** Fleshy adipose fin absent behind the rayed dorsal fin . . . . . *Clarias gariepinus* (Figure 4d)
- b** Fleshy adipose fin present behind the rayed dorsal fin . . . . . *Heterobranchus longifilis*
- 59(57<sup>b</sup>) a** Anal fin long extending from ventrals to caudal; mouth terminal . . . . . 60
- b** Anal fin short, not extending to caudal; mouth subinferior . . . 62
- 60(59<sup>a</sup>) a** Fleshy adipose fin present; sloped upper head profile, with gradually ascending nape from occiput to the dorsal fin . . . . . *Schilbe mystus* (Figure 4k)
- b** Adipose fin absent; upper head profile horizontal or sloped . . . 61
- 61(60<sup>b</sup>) a** Horizontal upper head profile, with abruptly ascending nape from occiput to dorsal fin . . . . . *Schilbe uranoscopus* (Figure 4l)
- b** Sloped upper head profile, with gradually ascending nape from occiput to dorsal fin . . . . . *Schilbe intermedius*
- 62(59<sup>b</sup>) a** Maxillary barbels short, not extending beyond head; caudal fin lobes not extending into long filaments; dorsal fin with 6 unbranched rays . . . . . *Chrysichthys turkana* (Figure 4g)
- b** Maxillary barbels extremely long, extending beyond head, reaching ventral or anal fins; upper caudal lobe extending into long filament, but the lower lobe may or not . . . . . 63
- 63(62<sup>b</sup>) a** Both upper and lower caudal fin lobes extending into long filament; the first branched dorsal fin ray extending into a short filament; dorsal fin with 9–11 (often 10) branched rays . . . . . *Bagrus bajad* (Figure 4e)
- b** Upper caudal fin lobe extending into long filament but the lower lobe not; the first branched dorsal fin ray not extending into a short filament; dorsal fin with 8–10 (often 9) branched rays . . . . . *Bagrus docmak* (Figure 4f)