

Article

Uses, Knowledge and Extinction Risk Faced by *Agave* Species in Mexico

Cecilia Alducin-Martínez ^{1,2}, Karen Y. Ruiz Mondragón ², Ofelia Jiménez-Barrón ², Erika Aguirre-Planter ², Jaime Gasca-Pineda ², Luis E. Eguiarte ² and Rodrigo A. Medellín ^{2,*}

¹ Escuela de Ciencias, Universidad de las Américas Puebla, Puebla 72810, Mexico

² Instituto de Ecología, Universidad Nacional Autónoma de México, Mexico City 04510, Mexico

* Correspondence: medellin@iecolologia.unam.mx

Abstract: We compiled an updated database of all *Agave* species found in Mexico and analyzed it with specific criteria according to their biological parameters to evaluate the conservation and knowledge status of each species. Analyzing the present status of all *Agave* species not only provides crucial information for each species, but also helps determine which ones require special protection, especially those which are heavily used or cultivated for the production of distilled beverages. We conducted an extensive literature review search and compiled the conservation status of each species using mainstream criteria by IUCN. The information gaps in the database indicate a lack of knowledge and research regarding specific *Agave* species and it validates the need to conduct more studies on this genus. In total, 168 *Agave* species were included in our study, from which 89 are in the subgenus *Agave* and 79 in the subgenus *Littaea*. *Agave lurida* and *A. nizandensis*, in the subgenus *Agave* and *Littaea*, respectively, are severely endangered, due to their endemism, lack of knowledge about pollinators and floral visitors, and their endangered status according to the IUCN Red List. Some species are at risk due to the loss of genetic diversity resulting from production practices (i.e., *Agave tequilana*), and others because of excessive and unchecked overharvesting of wild plants, such as *A. guadalajarana*, *A. victoriae-reginae*, *A. kristenii*, and others. Given the huge economic and ecological importance of plants in the genus *Agave*, our review will be a milestone to ensure their future and continued provision of ecosystem services for humans, as well as encouraging further research in *Agave* species in an effort to enhance awareness of their conservation needs and sustainable use, and the implementation of eco-friendly practices in the species management.



Citation: Alducin-Martínez, C.; Ruiz Mondragón, K.Y.; Jiménez-Barrón, O.; Aguirre-Planter, E.; Gasca-Pineda, J.; Eguiarte, L.E.; Medellín, R.A. Uses, Knowledge and Extinction Risk Faced by *Agave* Species in Mexico. *Plants* **2023**, *12*, 124. <https://doi.org/10.3390/plants12010124>

Academic Editor: June Simpson

Received: 6 November 2022

Revised: 22 November 2022

Accepted: 30 November 2022

Published: 27 December 2022



Copyright: © 2022 by the authors. Licensee MDPI, Basel, Switzerland. This article is an open access article distributed under the terms and conditions of the Creative Commons Attribution (CC BY) license (<https://creativecommons.org/licenses/by/4.0/>).

Keywords: biodiversity; conservation; genetic diversity; distilled beverages; mezcal; pollinators

1. Introduction

Mexico is well-known for its high levels of biodiversity, and agaves or magueyes belonging to the family Asparagaceae are a very important example of that biodiversity. The genus *Agave* is endemic to the American continent (although introduced *Agave* are now found in many places), mainly in arid and semi-arid areas of Mexico. There are approximately 200 species of *Agave*, of which 166 are distributed in Mexico and 119 are endemic [1,2]. The subgenus *Littaea* contains about 78 species (Figure 1) while the subgenus *Agave* includes around 92 species (Figure 2), making it the subgenus with the greatest distribution throughout Mexico [3]. Subgenera are distinguished by their large inflorescence, either a spike for the subgenus *Littaea* species or branched with panicles for *Agave* [4]. The succulence and rigidity of its leaves for water storing, the efficient water absorption system throughout its roots and the limited water loss through transpiration, are some of the adaptations agaves possess for life in dry ecosystems. Their CAM-type photosynthetic metabolism (Crassulaceae Acid Metabolism) allows them to grow in poor soil and weather conditions, withstanding severe environmental pressures [2]. These morphological and physiological adaptations have allowed agaves to live in a wide variety of environments, expanding their geographical distribution [3,5].

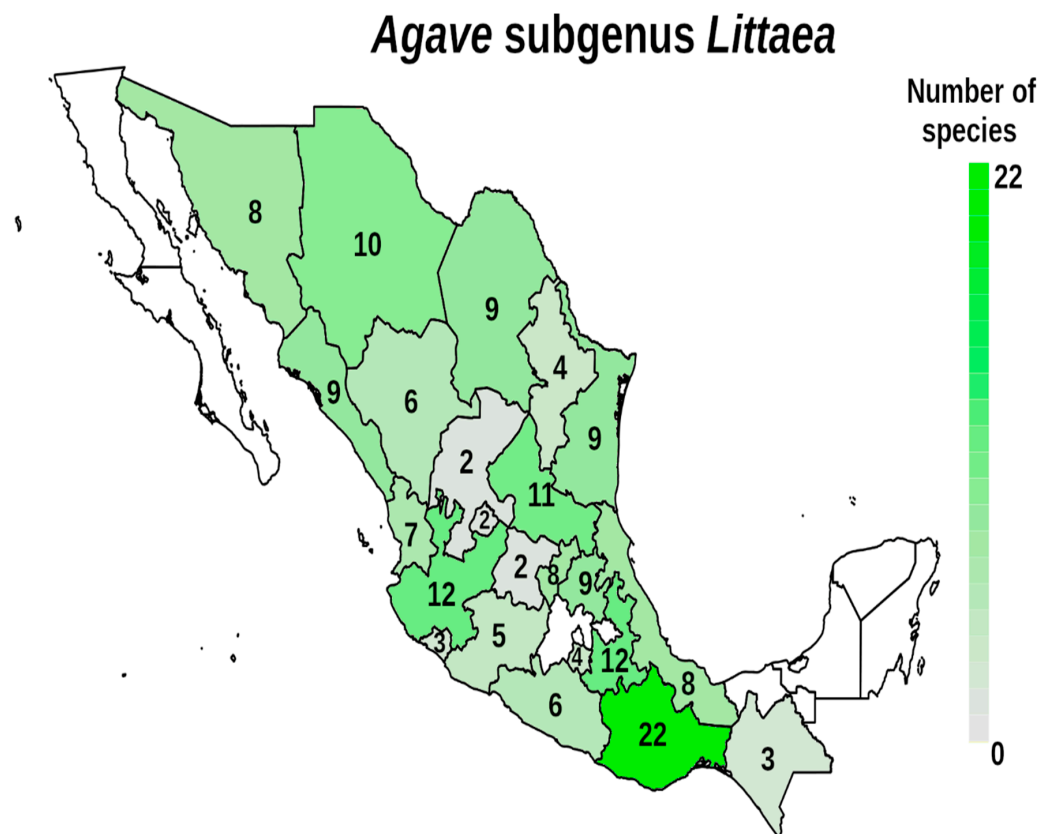


Figure 1. Distribution and number of species of the *Agave* subgenus *Littaea* by Mexican states. Color intensity is proportional to the number of species.

From a historical perspective, agaves have played a crucial role in the daily lives of human beings, providing a wide range of resources, from food and the production of alcoholic beverages to a source of fiber. The procurement of fibers from these plants was perhaps the first use given to agaves, since it was used for clothing, baskets, nets, rope, and more [4]. Several species have been used for food, the flowers boiled and eaten, and earthen ovens to cook agave cores or “piñas”. This method was an ancestral practice that is nowadays utilized for the production of distilled beverages [6]. The use of *Agave* to produce the distilled liquors known today as tequila, mezcal, and others was apparently not known to past civilizations, since distillation was introduced after the conquest, but the production of pulque and mead or “aguamiel” has been used since pre-Hispanic times, making these beverages the ones that promoters of the agave cultivation in Mexican civilizations. Currently over 70 traditional uses have been known and recorded for the species of the genus *Agave* [7], classified under 22 categories [8].

Additionally, the residues derived from the elaboration of distilled beverages, including the flowering stalks, bagasse (solid waste) and stillage (liquid waste) have various uses. The leaves, removed from the core of the agave rosette are commonly used in the preparation of Mexican dishes, such as in the “barbacoa” where the leaves are roasted and used to wrap the meat with spices for cooking while bagasse and stillage residues have been proven as a good alternative for compost [9]. These wastes are polysaccharide-rich byproducts that can be used for the production of fructans, which can be used in supplement products to treat diabetes or obesity [2].

Agave fibers have a wide variety of uses: as food for livestock and the production of different handcrafts, or common products such as nets, ropes or textiles. In rural areas, agaves are widely used as living fences to keep livestock away from crops or houses, to indicate roads, and even for construction [10]. *Agave sisalana* (sisal) and *A. fourcroydes* (henequen) are the most useful species for obtaining fiber and are widely used for struc-

tural construction material. *Agave sisalana*, for example, is still a major source of fiber in plantations in many countries of Latin America, Asia and Africa [11]. Fiber obtained from agaves is having a greater advantage over synthetic fibers nowadays as they are more affordable, with lower density, ecofriendly, and can be recycled [12].

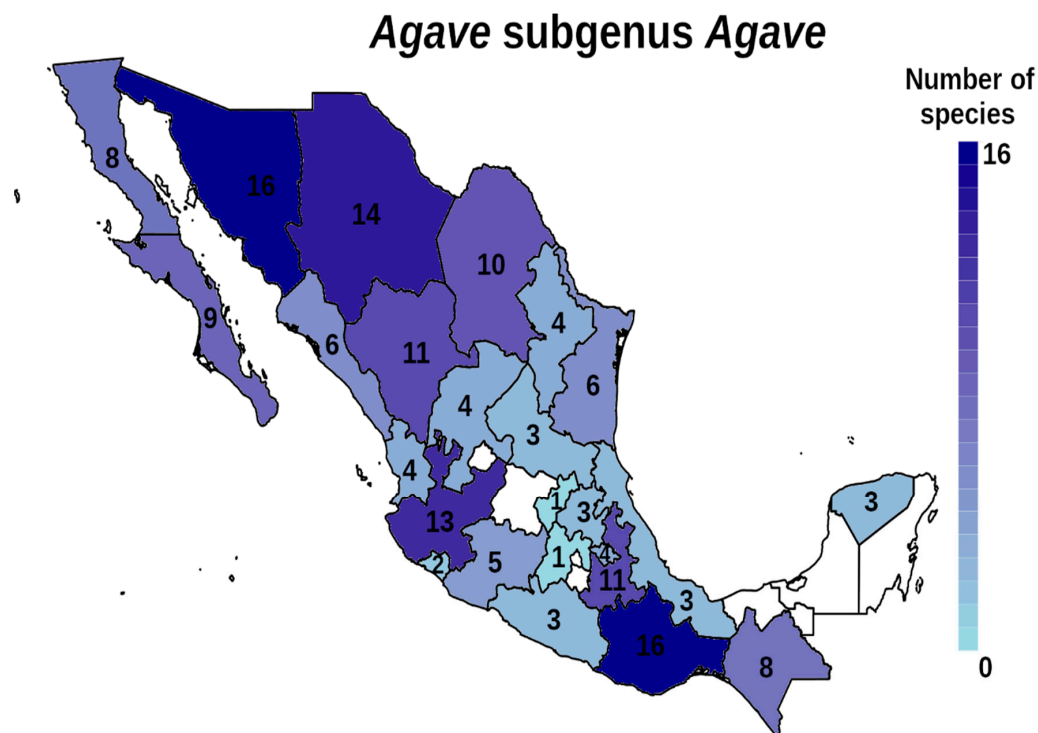


Figure 2. Distribution and number of species of the *Agave* subgenus *Agave* by Mexican states. Color intensity is proportional to the number or species.

Agaves are greatly known in the distilled beverages industry. Tequila and mezcal have become symbols of Mexico throughout the world, while pulque, the pre-Hispanic fermented alcoholic beverage, is considered to be one of the first traditional drinks originated from agave. Bacanora and raicilla are some of the least known agave distillates as they have a low level of industrialization compared to the rest of the distilled beverages [6,8].

Pulque is a white fermented beverage that can be obtained from a wide variety of agave species such as *A. atrovirens*, *A. americana*, *A. salmiana* and *A. mapisaga*. This drink is made through the fermentation of mead or *aguamiel*, a sugary extract that accumulates inside the core of the ripe agave and that can also be consumed fresh without fermenting [13]. Pulque is consumed both in rural areas, where it may even be considered as an important meal in a daily diet, and in urban areas, where it can be found in *pulquerias* and Mexican restaurants. Currently, the consumption of pulque is promoted partly so as not to lose a pre-Hispanic tradition [14,15].

Tequila is considered the most representative drink in Mexico, a job and currency generator of foreign exchange for its sales abroad. In 2016, Jalisco obtained \$1.6 billion dollars in tequila exports abroad growing to \$2.3 billion dollars in 2020 while the industry generated 70,000 jobs [16,17]. Tequila is obtained from *Agave tequilana* or blue agave, which can only be grown in regions known as Denomination of Origin of Tequila (DOT). This includes the states of Jalisco (126 municipalities) with 90% of production, Michoacán (30 municipalities), Tamaulipas (11 municipalities), Nayarit (eight municipalities) and Guanajuato (seven municipalities) [18]. Since *A. tequilana* is not common in the wild, tequila is sourced entirely from cultivated plants. In addition, to avoid a perceived waste if the plants are allowed to flower, agave fields are re-planted with young agave plants that are the result of asexual reproduction from a subset of the original plants in the field, thus

resulting in a severe loss of genetic diversity generation after generation [19]. In addition, tequila has the most industrialized production processes of all distilled beverages originated from agave. The use of autoclaves (steam-fueled pressure-cookers) to cook the heads of *A. tequilana* is the most production-efficient method for *Agave* distillates, having control of the pressure-temperature ratio and its highly reduced cooking time compared to handcrafted methods [2,20,21]. Yet this process has serious costs for the quality and organoleptic characteristics of the final product as using diffusers for the thorough extraction of the sugars causes the addition of other secondary metabolites to the must, the fluid subjected to distillation, lowering the quality of the final product [22].

Mezcal, unlike tequila, is obtained from more than 50 agave species mostly found in the wild in Mexico. In 2007, Colunga-GarcíaMarín stated that at least 56 taxa are used for the production of this beverage. There is a wide diversity in mezcal production, which is due both to the diversity of the agave species used, and the variety of production processes. Thus, while tequila production is standardized and industrialized, the production of mezcal is generally handcrafted varying between regions so its flavor, aroma, alcohol content and quality depends on the region of production, the species of agave used and the mezcal manufacturer in charge of it [23]. Although mezcal production is generally handcrafted, industrial and so-called “ancestral” production processes are also used. Yet generally, traditional mezcal usually uses pit ovens or masonry pools for fermentation, grinding is carried out with tahona or Chilean mill, and distillation is made in copper stills or clay pots.

Bacanora is the local mezcal of the state of Sonora and is obtained from a variety of *A. angustifolia*, from which mezcal espadín is derived [24]. The variety *A. angustifolia* var. *pacifica* differs mainly in the cultivation of the agave as it is a wild agave with no use of fertilizers or pesticides and its distillation replaces the copper stills with metal barrels heated with mesquite wood. Currently, few producers are dedicated to the production and marketing of bacanora [25,26].

Coastal raicilla is obtained from *A. rhodacantha* and *A. angustifolia*, while the highland raicilla is acquired from *A. maximiliana*. This was a popular mezcal among miners of the mountains of the Sierra Madre Occidental of Jalisco and its production is currently only locally handcrafted by around 70 producers in 2014 [2,27].

The consumption of agave-derived products has increased in recent years and therefore its demand is rapidly growing nationally and internationally, mainly that of the distilled beverages. This demand implies a greater quantity of supply and modern technology in production processes, thus decreasing traditional methods and craftsmanship. That being said, it is important to emphasize that depending upon the *Agave* species and the local conditions of soil, humidity and nutrients, it may take between seven, ten, or 36 years or more (i.e., *A. tequilana*, *A. potatorum*, *A. seemanniana*, respectively) [4,28–30] for them to reach harvest maturity, so if sustainable practices and adequate environments are not secured for wild individuals, the future of their populations could be in jeopardy.

In the case of mezcal, this evolving tradition and increased demand has forced some producers to incorporate new technologies and infrastructures to be capable of adapting to a rapidly growing and demanding market, yet if proper management practices of agave populations are lost, it could result in a reduction of population size and genetic variability. Species such as *A. tequilana* for making tequila or *A. fourcroydes* to manufacture henequen, use clonal propagation, where suckers of the same genotype are grown and thus their genetic diversity is eroded generation after generation. The loss of genetic diversity carries a reduction of its adaptability to environmental and climate changes, pathogens and pests [2,23,30–33].

As with any species, genetic diversity of *Agave* species is crucial to secure its evolutionary processes and adapt to a changing environment. Most species of *Agave* exhibit sexual reproduction and are usually cross-pollinated, contributing to greater genetic diversity in the wild. However, many species also exhibit asexual reproduction, which can also be

useful if there are few pollinators available, but it could be detrimental to genetic diversity in agave crops [23,30,31].

The objective of this study is to describe an updated compilation of the species of both subgenera of the genus *Agave* (*Agave* and *Littaea*) found in Mexico, analyzing available data for each species on its uses, biology and extinction risk, and suggesting alternative strategies to avoid extinction or detrimental uses of particular species.

2. Methodology and Analysis

A review using different digital searches, with emphasis in databases, dissertations and literature in Spanish, several English digital researches, Howard Scott Gentry's physical *Agaves of Continental North America* book and previous reviews published on the *Agave* species found in Mexico divided by the two subgenera, *Agave* and *Littaea*, was carried out using the following criteria: distribution in Mexico, common names, pollinators and floral visitors, common uses, type(s) of reproduction, endemism, extinction risk according to the IUCN Red List [34], subspecies, and a calculation was made, based on the total importance of each species supported by the parameters mentioned above. The five criteria regarding the importance score of each species have similar weight and are explained below. It is important to emphasize that although the species from the subgenus *Littaea* are of less economic importance than the subgenus *Agave*, it is relevant to include them in the analysis because of their biological importance.

2.1. Risk Level Based on the IUCN Red List

- CR: Critically Endangered;
- EN: Endangered;
- VU: Vulnerable;
- EW: Extinct in the Wild;

2.2. Endemism in Mexico

- E: Endemic;
- NE: Not endemic;

2.3. General Uses

- The species has anthropogenic use;
- The species has no uses;

2.4. Knowledge of Pollinator, Floral Visitor and/or Reproduction

- Assuming that less knowledge puts the species at greater risk than more known species

Index: IUCN Red List Abbreviations for Tables 1 and 2.

IUCN Red List
NT: Near Threatened
VU: Vulnerable
EN: Endangered
CR: Critically Endangered
EW: Extinct in the Wild

Statistical analyzes and figures were made with R y4.2.1 [35]. Graphics were made with the package ggplot 2 [36]. A summary of the analysis of both subgenera is listed below with Table 1 showing the subgenus *Agave* and Table 2 the subgenus *Littaea*. The last column titled Importance Score is based on five criteria obtained from the analysis, which are considered to be very relevant regarding the conservation status and biological environment of each species; the higher the number, the greater the extinction risk a species faces.

Table 1. Species of the subgenus *Agave* with a summary of specific data according to their conservation status and biological environment.

Species	Common Names	Uses	Pollinator	Floral Visitor	Reproduction	Distribution	IUCN Red List Category	Importanc Score	References
<i>Agave abisaii</i> * A. Vázquez and Nieves		Medical use (anti-inflammatory)	<i>Leptonycteris yerbabuena</i> <i>Choeronycteris mexicana</i>		Sexual: Pollination	Jalisco	EN	7	[34,37,38]
<i>Agave aktites</i> Gentry		Food				Sinaloa, Sonora	VU	4	[4,34,38]
<i>Agave americana</i> L.	Americano, Arroqueño (Oaxaca), Blanco, Castilla (Oaxaca), Cenizo (Tamaulipas), De Pulque (Oaxaca), Ruqueño (Oaxaca), Serrano, Sierra Negra (Oaxaca), T'ax'uada (otomi), Teometl (náhuatl), Yavi-Cuan (mixteco), Agave amarillo, Maguey serrano, Maguey cebra, Maguey cenizo, Maguey chichimeco, Maguey chino, Maguey pinto	Pulque production, distilled beverage production, ornament, textile source, food	<i>Leptonycteris yerbabuena</i> , <i>Leptonycteris nivalis</i> <i>Choeronycteris mexicana</i>		Asexual: clonal sexual: pollination	Chihuahua, Oaxaca, Coahuila, Jalisco, South EU (Texas)		3	[4,6,13,38,39]
<i>Agave andreae</i> Sahagún and A. Vázquez	Maguey de Piedra	Ornament				Michoacán	VU	7	[34,37–39]
<i>Agave angustifolia</i> Haw.	Espadilla (Puebla), Espadín (Oaxaca), Ixtero verde, Amole, Bacanora, Chacaleño (Durango), Chelem (maya), Cincoñero (Oaxaca), Delgado (Guerrero, Oaxaca), Doba-yej (zapoteco), Gubuk (Chihuahua y Durango), Gusime (Chihuahua), Guvúkai (Chihuahua y Durango), Hamoc (seri), Juya-cuul, Ki'mai (Chihuahua y Durango), Kuúri (Chihuahua), Lineño (Jalisco), Maguey de Campo, Pelón Verde (Oaxaca), Tepemete (Durango), Yavi-incoyo, Zapupe, Henequén, Maguey de flor, Maguey de ixtle	Distilled beverage production, fiber source	<i>Leptonycteris yerbabuena</i> <i>Choeronycteris mexicana</i>	<i>Mimus saturninus</i> , woodpeckers, hummingbirds, night moths	Sexual: pollination asexual: clonal bulbils	Sonora, Sinaloa, Nayarit, Jalisco, Guerrero, Oaxaca, Tamaulipas, Veracruz, Costa Rica		4	[4,38–44]

Table 1. Cont.

Species	Common Names	Uses	Pollinator	Floral Visitor	Reproduction	Distribution	IUCN Red List Category	Importanc Score	References
<i>Agave antillarum</i> Descourt.	Magüey Antillano					Dominican Republic		2	[38,45]
<i>Agave applanata</i> Lem. ex Jacobi	Ki'may, Magüey blanco, Magüey de Castilla, Magüey de ixtle	Pulque production, medicinal use, fiber source, food			Sexual: seeds	Chihuahua, Durango, Oaxaca, Puebla, Tlaxcala, Veracruz		3	[4,13,38,40]
<i>Agave asperrima</i> Jacobi	Magüey Bruto	Food, mead production, distilled beverage production, fiber source			Asexual: clonal sexual: seeds	Coahuila, Durango, Nuevo León, Querétaro, San Luis Potosí, Tamaulipas		3	[38,40–42,45]
<i>Agave atrovirens</i> Karw.	Agave pulquero, Flor de jote, Flor de magüey, Flor de mezcal, Flor de pitol, Flor de quiote, Flor de sotol, Magüey de montaña, Magüey de pulque, Magüey manso, Magüey de cumbre, Tepeme	Mezcal production, fiber source, living fence			Asexual: clonal sexual: seeds	Puebla, Oaxaca		3	[4,13,38]
<i>Agave aurea</i> Brandegee	Lechuguilla, Lechuguilla mezcal, Magüey	Ornament, fiber source			Asexual: clonal	<i>Baja California Sur</i>		5	[38,44,46,47]
<i>Agave avellanidens</i> Trel.		Ornament			Asexual: clonal	<i>Baja California</i>	NT	5	[34,38,46,47]
<i>Agave azurea</i> R. H. Webb and G. D. Starr					Sexual: seeds	<i>Baja California Sur</i>	VU	4	[34,38,47]
<i>Agave bovicornuta</i> Gentry	Lechuguilla de la Sierra (Sonora), Masparillo (Durango) Cerial	Ornament, food, mezcal production (not so common), fiber source			Sexual: pollination, seeds	Sonora, Sinaloa, Chihuahua	VU	4	[4,34,38–40]

Table 1. Cont.

Species	Common Names	Uses	Pollinator	Floral Visitor	Reproduction	Distribution	IUCN Red List Category	Importanc Score	References
<i>Agave cantala</i> (Haw.) Roxb. ex Salm-Dyck	Cincoañero (Oaxaca), Maguey del Cinco (Oaxaca) Henequén	Fiber source, fistilled beverage production			Asexual: clonal	Oaxaca, Jalisco		3	[4,34,38–40]
<i>Agave capensis</i> Gentry	Mescalito	Food				<i>Baja California</i>	EN	8	[4,34,38–40]
<i>Agave chrysantha</i> Peebles		Food, fiber source	<i>Leptonycteris yerbabuena</i> , <i>Apis mellifera</i>	Bats, birds, insects	Sexual: pollination seeds asexual: clonal	Sonora, Southwest EU (Arizona)		2	[30,38,40,42,44]
<i>Agave colorata</i> Gentry	Ceniza (Sonora), Haamjö, Caacöl	Food, mead production, mezcal production, ornament	<i>Leptonycteris</i> , hummingbirds	Hummingbirds	Sexual: pollination, seeds asexual: clonal	Sinaloa, Sonora		2	[4,38–40,44]
<i>Agave congesta</i> Gentry	Maguey Tzotzil	Ornament			Sexual: Seeds	<i>Chiapas</i>		6	[4,38,40,48–50]
<i>Agave cupreata</i> Trel. and A. Berger	Papalometl, Papalote (Guerrero), Ancho, Chino (Michoacán), Cimarrón, Tuchi, Yaabendisi (mixteco), Maguey bravo, Tobalá	Mezcal production, food, mead production			Sexual: seeds	Guerrero, Michoacán	EN	5	[34,38–41]
<i>Agave datylio</i> F. A. C. Weber		Ornament			Asexual: clonal	<i>Baja California Sur</i>		5	[4,38,44,47]
<i>Agave decipiens</i> Baker					Asexual: clonal	Southeast EU (Florida), Yucatán	VU	2	[4,34,38,45]
<i>Agave delamateri</i> W. C. Hodgs and Slauson		Food, fiber source		Birds, insects	Asexual: clonal	<i>Southwest EU (Arizona)</i>		5	[38,51]

Table 1. Cont.

Species	Common Names	Uses	Pollinator	Floral Visitor	Reproduction	Distribution	IUCN Red List Category	Importanc Score	References
<i>Agave deserti</i> (complex) Engelm.	Magüey del desierto	Ornament, food, fiber source, mead source		Hummingbirds, insects	Sexual: seeds asexual: clonal	Baja California Sonora Southwest EU		3	[4,38,40,44,47,52]
<i>Agave deserti</i> <i>Agave cerulata</i> (complex) Trel.	Mescal	Fiber source, food, Mead production, distilled beverage production				Baja California, Sonora		4	[38,40,44,47]
<i>Agave deserti</i> <i>Agave subsimplex</i> (complex) Trel.	A'amxw	Food	<i>Bombus</i> , <i>Leptonycteris yerbabuena</i> , <i>Lepidoptera</i>	Bats	Sexual: pollination	Sonora	VU	5	[34,38,40,44,53]
<i>Agave desmettiana</i> Jacobi	Magüey de pita	Ornament, mead production, distilled beverage production	<i>Glossophaga soricina</i>		Sexual: pollination asexual: clonal	Sinaloa, Southwest EU (California)		3	[4,38,40,54]
<i>Agave durangensis</i> Gentry	Cenizo (Durango), Bayuza	Ornament, mezcal production, food			Sexual: seeds asexual: clonal	Durango, Zacatecas		3	[4,38–40,55]
<i>Agave flexispina</i> Trel.		Ornament				Chihuahua, Durango, Zacatecas	VU	5	[4,34,38]
<i>Agave fortiflora</i> Gentry	Haamjö, Caacöl	Food, mead production			Asexual: clonal	Sonora		5	[4,38,40]
<i>Agave fourcroydes</i> Lem.	Henequén, Jenequén, Magüey sisal	Fiber source, ornament, food			Asexual: clonal nubils	Yucatán, Cuba		3	[4,38,40,55]

Table 1. Cont.

Species	Common Names	Uses	Pollinator	Floral Visitor	Reproduction	Distribution	IUCN Red List Category	Importanc Score	References
<i>Agave gentryi</i> B. Ullrich	Magüey del Bosque	Food, mead production, fiber source	Chiroptera		Sexual: pollination	Nuevo León, Coahuila, Tamaulipas, Durango, Zacatecas, San Luis Potosí, Hidalgo, Mexico, Puebla		3	[38,40,56,57]
<i>Agave gigantensis</i> Gentry		Ornament, mezcal production			Sexual: seeds	<i>Baja California Sur</i>		5	[4,38,40,46]
<i>Agave gracilipes</i> Trel.	Magüey de Pastizal					Chihuahua, South EU (Texas), Nuevo Mexico		2	[4,38]
<i>Agave grijalvensis</i> B. Ullrich	Magüey del Grijalva	Ornament, food			Sexual: seeds	<i>Chiapas</i>	EN	7	[34,38,58]
<i>Agave guadalajarana</i> Trel.	Mascarreño	Distilled beverage production, ornament, medical use			Sexual: seeds	<i>Jalisco</i>	EN	7	[4,34,38,40,42]
<i>Agave gypsophila</i> Gentry	Magüey de Ixtli, quiote	Used for rural house construction			Asexual: clonal	<i>Guerrero</i>	CR	9	[34,37,38,49,50]
<i>Agave havardiana</i> Trel.	Magüey norteño	Mezcal production	<i>Leptonycteris nivalis</i> , <i>Choeronycteris mexicana</i>	<i>Zenaida asiatica</i> , <i>Icterus parisorum</i>	Sexual: pollination	Chihuahua, Coahuila, South EU (Texas)	VU	3	[34,38,59,60]
<i>Agave hiemiflora</i> Gentry		Wild			Sexual: seeds	Chiapas, Guatemala		1	[4,38,48]

Table 1. Cont.

Species	Common Names	Uses	Pollinator	Floral Visitor	Reproduction	Distribution	IUCN Red List Category	Importanc Score	References
<i>Agave hookeri</i> Jacobi	Maguey Ixquitécatl	Pulque production, food, fiber source, living fence			Sexual: seeds asexual: clonal	Michoacán		5	[4,13,38,40]
<i>Agave inaequidens</i> K. Koch	Hocimetl (náhuatl), Largo (Michoacán), Lechuguilla	Pulque production, mezcal production, food, fiber source	<i>Leptonycteris yerbabuena</i> <i>Icterus bullockii</i>	<i>Apis mellifera</i> , <i>Vespidae</i> , <i>Bombus</i> , night moth, hummingbirds, hooded warbler	Asexual: clonal sexual: pollination seeds	Jalisco, Michoacán, Colima		2	[13,38–40,42]
<i>Agave isthmensis</i> A. García-Mend. and F. Palma	Maguey Istmeño	Ornament				Chiapas, Oaxaca	VU	5	[34,38]
<i>Agave jaiboli</i> Gentry		Food, mezcal production, fiber source			Sexual: seeds	Sonora, Chihuahua	VU	4	[4,34,38,40]
<i>Agave karwinskii</i> Zucc.	Al-mal-bi-cuish (chontal), Barril: Verde/Amarillo/Blanco, Bicuixe (Oaxaca), Cachutum (popolca), Cirial (Oaxaca), Cuishi (Oaxaca), Dob-cirial, Madrecuixe (Oaxaca), Manso, San Martinero (Oaxaca), Tobasiche (zapoteco/Oaxaca), Tripón (Oaxaca), Verde (Oaxaca), Candelilla, Candelillo, Canelillo corazón, Espadilla, Cuishe, Greñudo, Cuish, Madre cuish	Mezcal production, ornament, living fence, fiber source, food	<i>Leptonycteris yerbabuena</i>		Sexual: pollination asexual: clonal	Oaxaca, Puebla, Veracruz	VU	4	[4,34,38–40,61]
<i>Agave kewensis</i> Jacobi	Maguey del Grijalva	Food			Asexual: clonal	Chiapas		6	[38,40,48–50]

Table 1. Cont.

Species	Common Names	Uses	Pollinator	Floral Visitor	Reproduction	Distribution	IUCN Red List Category	Importanc Score	References
<i>Agave kristenii</i> A. Vázquez and Cházaro	Magüey de Piedra	Medical use, ornament			Asexual: clonal	Michoacán	CR	8	[34,37,38]
<i>Agave lexii</i> * García-Mor., García-Jim. and Iamónico		Wild				Tamaulipas		4	[38,62]
<i>Agave lurida</i> Aiton	Magüey de la Luna	Ornament, food				Oaxaca	EW	13	[4,34,38,49,50]
<i>Agave lyobaa</i> García-Mend. and S. Franco	Magüey Coyote	Mezcal production				Oaxaca, Puebla	EN	6	[63]
<i>Agave macroacantha</i> Zucc.	Barril Verde (Oaxaca), Cincoañero (Oaxaca), Cachrolochje', Espadilla, Estafalalate	Ornament, mead production, distilled beverage production, fiber source	<i>Leptonycteris yerbabuena</i> <i>Choeronycteris mexicana</i> Lepidoptera (Noctuidae, Sphingidae, Microlepidoptera)	Bats, <i>Colaptes auratus</i> , hummingbirds	Sexual: pollination asexual: clonal bulbils	Oaxaca, Puebla	EN	4	[34,38–40,42,61,64,65]
<i>Agave macroculmis</i> Tod.	Magüey verde	Food, mead production			Asexual: clonal	Chihuahua, Coahuila		3	[4,38,66]
<i>Agave mapisaga</i> Trel.	Aguamiel, Magüey manso, Magüey pulquero	Pulque production, distilled beverage production, food, fiber source, ornament, mead production			Asexual: clonal sexual: pollination	Chihuahua, Tlaxcala, Puebla, Hidalgo		3	[13,38,40,41,66]

Table 1. Cont.

Species	Common Names	Uses	Pollinator	Floral Visitor	Reproduction	Distribution	IUCN Red List Category	Importanc Score	References
<i>Agave margaritae</i> Brandege		Distilled beverage production			Asexual: clonal	<i>Baja California Sur</i>		5	[38,40,47]
<i>Agave marmorata</i> Roezi	Tepeztate o Tepextate (Oaxaca), Curandero, Lechuguilla, Maguey de Caballo, Pitzometl (náhuatl/Puebla), Tdu-cual ó Du-cual (zapoteco), Tecolote, Pichomel, Pitzomel, Pichometl	Mezcal production, food, mead production, fiber source	<i>Leptonycteris yerbabuenae</i> <i>Choeronycteris mexicana</i>	Bats, <i>Colaptes auratus</i> , hummingbirds	Sexual: pollination, seeds	Oaxaca, Puebla, Tlaxcala		2	[4,38–40,53,61]
<i>Agave maximiliana</i> Baker	Lechuguilla (Jalisco), Manso, Masparillo (Durango), Tecolote, Raicilla	Mezcal production, mead production, food, medical use				Jalisco, Nayarit, Durango, Southwest EU (California, Arizona)		4	[4,38–40,67]
<i>Agave mckelveyana</i> Gentry			Hummingbirds, <i>Xylocopa</i> , wasps		Sexual: pollination asexual: clonal	<i>Southwest EU (Arizona)</i>		3	[4,38,44]
<i>Agave montana</i> Villareal		Ornament, mead production, fiber source				Tamaulipas, Nuevo León, Coahuila		4	[38,40]
<i>Agave moranii</i> Gentry		Food, fiber source				<i>Baja California</i>		6	[4,38,46]
<i>Agave murpheyi</i> Gibson	Agave hohokam	Food, distilled beverage production, fiber source			Sexual: seeds asexual: clonal bulbils	Sonora, Southwest EU (Arizona)		3	[4,38,40,51]
<i>Agave nayaritensis</i> Gentry						Sinaloa, Durango, Nayarit	VU	3	[4,34,38,48]

Table 1. Cont.

Species	Common Names	Uses	Pollinator	Floral Visitor	Reproduction	Distribution	IUCN Red List Category	Importanc Score	References
<i>Agave oroensis</i> Gentry						Zacatecas		2	[4,38,40,48]
<i>Agave ovatifolia</i> G. D. Starr and Villareal		Ornament, fiber source				Nuevo León		4	[38,40,48]
<i>Agave pablocarrilloi</i> A. Vázquez, Muñiz-Castro and Padilla-Lepe						Colima		4	[37,38]
<i>Agave pachycentra</i> Trel.						Oaxaca, Chiapas, Guatemala		2	[4,38,48]
<i>Agave palmeri</i> Engelm.	Lechuguilla (Sonora)	Food, fiber source, distilled beverage production	<i>Bombus</i> , <i>Leptonycteris nivalis</i> , <i>Choeronycteris mexicana</i>	Hummingbirds, insects	Sexual: pollination	Southwest EU (Arizona), Sonora		2	[4,30,38–40]
<i>Agave parrasana</i> A. Berger	Noa	Ornament, fiber source				Coahuila	VU	8	[4,34,38,40,49,50]
<i>Agave parryi</i> Engelm.	Maguey mezcal	Mezcal production, food, fiber source, ornament			Asexual: clonal	Chihuahua, Durango, Southwest EU (Nuevo Mexico and Arizona)		3	[4,38,40]
<i>Agave phillipsiana</i> W. C. Hodgs.		Food			Asexual: clonal	Southwest EU (Arizona)		3	[38,68]

Table 1. Cont.

Species	Common Names	Uses	Pollinator	Floral Visitor	Reproduction	Distribution	IUCN Red List Category	Importanc Score	References
<i>Agave potatorum</i> Zucc.	Tobalá o Dob-ala (Zapoteco/Oaxaca), Biliá (Oaxaca), Dob-be, Maguey de Monte, Papalometl (Puebla/Oaxaca), Yauiticuxi (mixteco), Arruqueño, Magueycillo	Mezcal production, food, ornament	<i>Leptonycteris yerbabuena</i> , <i>Leptonycteris nivalis</i> , <i>Apis mellifera</i> , <i>Bombus</i> sp., <i>Tabanus</i> sp.	Bats, birds	Asexual: clonal (occasional) Sexual: pollination, seeds	Oaxaca, Puebla	VU	3	[4,34,38–40,42,69]
<i>Agave pringlei</i> Engelm. ex Baker					Asexual: clonal	Baja California		3	[38,47]
<i>Agave promontorii</i> Trel.		Ornament			Sexual: seeds	Baja California Sur	CR	8	[4,34,38,47]
<i>Agave rhodacantha</i> Trel.	Cimarrón amarillo, Maguey de campo, Ixtéro amarillo	Mezcal production, fiber source, ornament, living fence			Sexual: seeds	Sonora, Nayarit, Jalisco, Oaxaca		3	[38,40,70]
<i>Agave salmiana</i> Otto ex Salm-Dyck	Amarillo (Puebla), Bronco Mbänuada (otomí), Cimarrón, Del Valle (Oaxaca), Doba gashon ó Doba lash (Oaxaca), Llano (Oaxaca), Maguey de Pulque, Manso, Potosino, Verde (San Luis Potosí), Xagarcia (Oaxaca) Maguey pamilla, Maguey pinto	Pulque production, mead production, mezcal production, food (“Pan de Pulque”) fiber source, ornament	<i>Leptonycteris yerbabuena</i> , <i>Leptonycteris nivalis</i> , <i>Choeronycteris mexicana</i> , Bees, Hummingbirds	Bats, birds	Asexual: clonal sexual: pollination seeds	Puebla, Hidalgo, Chihuahua, Jalisco, Tlaxcala, Southwest EU (California and Arizona)		2	[4,13,15,38,39,41,42,56]
<i>Agave scabra</i> Ortega	Lamparillo	Ornament	<i>Leptonycteris yerbabuena</i> , <i>Leptonycteris nivalis</i>		Sexual: pollination asexual: clonal	Chihuahua, Coahuila		3	[4,38,56,59]

Table 1. Cont.

Species	Common Names	Uses	Pollinator	Floral Visitor	Reproduction	Distribution	IUCN Red List Category	Importanc Score	References
<i>Agave scaposa</i> Gentry	Maguey de Macho	Used for construction, food, living fence	<i>Leptonycteris</i> sp.	<i>Bombus</i> , hummingbirds	Sexual: pollination asexual: clonal	Puebla, Oaxaca		2	[4,38]
<i>Agave sebastiana</i> Greene		ornament			Asexual: clonal	<i>Baja California Sur</i>		5	[4,38,47]
<i>Agave seemanniana</i> Jacobi	Biliaa, Maguey chato	Mezcal production, food			Sexual: seeds	Oaxaca, Chiapas, Nicaragua		5	[4,38,40]
<i>Agave shawii</i> Engelm.	Amal	Ornament, food, distilled beverage production		Hummingbirds <i>Leptonycteris</i> , <i>Bombus</i>	Sexual: seeds asexual: clonal	Baja California, Southwest EU		3	[38,40,44,47]
<i>Agave shrevei</i> Gentry	Lechuguilla (Sonora), Ceniza, Lechuguilla ceniza, Mezcal blanco	Mezcal production, mead production, food				<i>Sonora</i>		6	[4,38–40,71]
<i>Agave sisalana</i> Perrine	Henequén, Henequén verde, Maguey tuxtleco, Sisal	Fiber source, ornament			Asexual: clonal bulbils	Yucatán, Chiapas		3	[4,38,40,55]
<i>Agave sobria</i> Brandege	Lechuguilla, Mezcal pardo	Mezcal production, food, ornament			Sexual: seeds asexual: clonal	<i>Baja California Sur</i>		5	[38,40,44,46,47]
<i>Agave stringens</i> Trel.						<i>Jalisco</i>		4	[4,38,45]
<i>Agave tequilana</i> F. A. C. Weber	Azul (San Luis Potosí, Jalisco), Chato (Michoacán), Tequila, Agave tequilero, Bermejo, Mano larga, Pata de mula, Chino azul, Chino bermejo	Tequila production, Food, fiber source, ornament, soap production			Asexual: clonal Sexual: pollination (minimum)	Jalisco		3	[4,38–41,55]

Table 1. Cont.

Species	Common Names	Uses	Pollinator	Floral Visitor	Reproduction	Distribution	IUCN Red List Category	Importanc Score	References
<i>Agave turneri</i> R. H. Webb and Salazar-Ceseña					Asexual: clonal	<i>Baja California</i>	EN	5	[34,38,47]
<i>Agave valenciana</i> Cházaro and A. Vázquez	Relisero (Jalisco)	Mezcal production, raicilla production, ornament			Sexual: seeds	<i>Jalisco</i>	CR	8	[34,39,40,72]
<i>Agave vivipara</i> L.	Lechuguilla	Food, mead production, fiber source, distilled beverage production					VU	5	[34,38,40]
<i>Agave vizcainoensis</i> Gentry	Magüey de El Vizcaino	ornament	<i>Leptonycteris yerbabuena</i>		Asexual: clonal Sexual: pollination	<i>Baja California Sur</i>		6	[38,47,49,50]
<i>Agave weberi</i> J. F. Cels ex J. Poiss.	Magüey mezcalero, Magüey verde	Mezcal production, pulque production, ornament, fiber source			Asexual: clonal Sexual: pollination, seeds	Chihuahua, Coahuila, Durango, San Luis Potosí, Tamaulipas		3	[4,13,38,40]
<i>Agave wocomahi</i> Gentry	Magüey verde, Ojcome	Mezcal production, food, fiber source, mead production	<i>Leptonycteris yerbabuena</i>		Sexual: pollination, seeds	Sonora, Durango, Chihuahua, Jalisco		3	[4,38,40]
<i>Agave x glomeruliflora</i> (Engelm.) A. Berger						Durango, Coahuila		2	[38,73]
<i>Agave zebra</i> Gentry	Áamxw, Káokt'	Ornament, mezcal production, food			Sexual: seeds Asexual: bulbils	<i>Sonora</i>	VU	6	[34,38,40,44,74]

* Distribution both in *Italics* and **Bold** means the species is endemic from that state.

Table 2. Species of the subgenus *Littaea* with a summary of specific data according to their conservation status and biological environment.

Species	Common Names	Uses	Pollinator	Floral Visitor	Reproduction	Distribution	IUCN Red List Category	Importance Score	References
<i>Agave albomarginata</i> Gentry	Magüey de márgenes claros	Ornament			Asexual: clonal	Coahuila, Chihuahua, Nuevo León, Querétaro, San Luis Potosí, Tamaulipas	EN	5	[4,34,38,40,48]
<i>Agave albopilosa</i> I. Cabral, Villareal and A. E. Estrada	Magüey viejito	Fiber source, ornament				<i>Sierra Madre Oriental (exact location not given for protection)</i>	CR	9	[34,38,40,75]
<i>Agave angustiarum</i> Trel.	Lechuguilla suave, Magüey de ixtle, Cacaya	Fiber source, food				Guerrero, Michoacán, Morelos, Oaxaca, Puebla		4	[38,48,76]
<i>Agave arizonica</i> Gentry and J. H. Weber		Ornament			Asexual: clonal	<i>Southwest EU (Arizona)</i>		5	[4,38]
<i>Agave arcedianoensis</i> Cházaro, O. M. Valencia and A. Vázquez	Magüey de Arcediano	Ornament				<i>Jalisco</i>	VU	7	[34,38,48,61]
<i>Agave attenuata</i> Salm-Dyck	Magüey del Dragón	Ornament			Asexual: clonal	Guerrero, Jalisco, Colima, Michoacán, Nayarit, Sinaloa, Durango		3	[4,38,77]
<i>Agave bakeri</i> H. Ross		Ornament			Asexual: clonal Sexual: seeds			3	[4,38]
<i>Agave bracteosa</i> S. Watson ex Engelm.	Magüey araña	Ornament, fiber source			Asexual: clonal	<i>Coahuila</i>		7	[4,38,40,49,50]
<i>Agave calciphila</i> G. D. Starr						<i>Oaxaca</i>		4	[38,78]
<i>Agave celsii</i> Hook.	Magüey comezonudo, Magüey de Peña	Medical use	<i>Bombus, Leptonycteris, hummingbirds Sphingidae</i>			Hidalgo, Puebla, Querétaro, San Luis Potosí, Tamaulipas		3	[38,79]

Table 2. Cont.

Species	Common Names	Uses	Pollinator	Floral Visitor	Reproduction	Distribution	IUCN Red List Category	Importance Score	References
<i>Agave chazaroi</i> A. Vázquez and O. M. Valencia		Ornament				Jalisco	VU	7	[34,38,76,77]
<i>Agave chiapensis</i> Jacobi	Maguey Chamula	Ornament, food				Chiapas, Oaxaca	VU	8	[4,34,38,40,49,50]
<i>Agave chrysoglossa</i> I. M. Johnst.	Hasot, Amole	Ornament, local use for clothes washing, food	<i>Leptonycteris yerbabuena</i> , hummingbirds	Insects, hummingbirds	Sexual: pollination, seeds Asexual: clonal	Sonora		4	[4,38,40,44]
<i>Agave colimana</i> Gentry	Maguey de Colima	Ornament				Colima, Jalisco, Nayarit		4	[4,38,48]
<i>Agave convallis</i> Trel.	Jabalí (Oaxaca), Maguey Escobeta	Distilled beverage production				Oaxaca	VU	7	[34,38,39,48,67,80]
<i>Agave dasylirioides</i> Jacobi and C. D. Bouche	Maguey intrépido	Ornament			Sexual: Seeds	Morelos	EN	9	[4,34,38,48–50]
<i>Agave difformis</i> A. Berger	Lechuguilla	Ornament, fiber source, soap	<i>Leptonycteris yerbabuena</i> , <i>Leptonycteris nivalis</i> , <i>Choeronycteris mexicana</i>	<i>Apis mellifera</i> , <i>Lasioglossum lasioglossum</i> , <i>Bombus</i> , <i>Centris</i> , <i>Polistinae</i> , <i>Agrius cingulatus</i> , <i>Pachylia ficus</i> , <i>Sphinx lugens</i> , <i>Erinnyis ello</i>	Sexual: pollination Asexual: clonal	San Luis Potosi, Hidalgo		2	[4,38,81]
<i>Agave doctorensis</i> L. Hern. and Magallán						Querétaro	CR	7	[34,38,82]
<i>Agave ellemeetiana</i> Jacobi					Asexual: clonal Sexual: seeds	Veracruz, Oaxaca		1	[4,38,83]
<i>Agave felgeri</i> Gentry		Food			Asexual: clonal	Sonora	VU	8	[4,38,40,44]

Table 2. Cont.

Species	Common Names	Uses	Pollinator	Floral Visitor	Reproduction	Distribution	IUCN Red List Category	Importance Score	References
<i>Agave filifera</i> Salm-Dyck	Amole, Maguey de maceta	Pulque production, fiber source			Asexual: clonal Sexual: pollination	Hidalgo, Morelos		3	[4,13,38,40]
<i>Agave garcia-mendozae</i> Galván and Hern.		Ornament, fiber source	<i>Leptonycteris yerbabuena</i> , <i>Leptonycteris nivalis</i> , <i>Choeronycteris mexicana</i>	<i>Apis mellifera</i> , <i>Agrius cingulatus</i> , <i>Pachylia ficus</i> , <i>Sphinx lugens</i> , <i>Erinnyis ello</i>	Sexual: pollination	<i>Hidalgo</i>	VU	5	[34,38,81]
<i>Agave garciaruzii</i> A. Vázquez, Hern.-Vera and Padilla-Lepe					Asexual: clonal	Jalisco, Michoacán		1	[38,76]
<i>Agave geminiflora</i> (Tagl.) Ker Gawl.	Palmilla	Ornament, fiber source	Hummingbirds		Sexual: pollination	Jalisco, Nayarit	VU	4	[4,34,38,40]
<i>Agave ghiesbreghtii</i> Lem. ex Jacobi		Living fence			Asexual: clonal	Oaxaca, Puebla		3	[4,38]
<i>Agave glomeruliflora</i> (Engelm.) A. Berger		Ornament			Sexual: seeds	Coahuila		3	[4,38]
<i>Agave graciellae</i> Galvan and Zamudio		Food, ornament				Querétaro, San Luis Potosí		4	[38,84]
<i>Agave guiengola</i> Gentry	Maguey plateado	Ornament			Asexual: clonal Sexual: seeds	<i>Oaxaca</i>	EN	9	[4,34,38,48–50]
<i>Agave gypsicola</i> García-Mend. and D. Sandoval	Maguey blanco (xavi kuiji)	Food, living fence				<i>Oaxaca</i>		6	[45,63]
<i>Agave horrida</i> Lem. ex Jacobi	Maguey bueno	Ornament, food, fiber source, distilled beverage production	<i>Leptonycteris nivalis</i> <i>Choeronycteris mexicana</i>	<i>Tegeticula</i> , <i>Apis mellifera</i>	Sexual: pollination Seeds	<i>Morelos</i>		4	[4,38,40,59,85]

Table 2. Cont.

Species	Common Names	Uses	Pollinator	Floral Visitor	Reproduction	Distribution	IUCN Red List Category	Importance Score	References
<i>Agave impressa</i> Gentry	Maguay Masparrillo	Medical use			Asexual: clonal	<i>Sinaloa, Nayarit</i>	EN	9	[4,34,38,49,50,61]
<i>Agave jimenoii</i> Cházaro and A. Vázquez						<i>Veracruz</i>		4	[38,86]
<i>Agave kavandivii</i> García-Mend. and C. Chávez		Food				<i>Oaxaca</i>	CR	9	[34,38,87]
<i>Agave kerchovii</i> Lem.	Cacalla, Rabo de León	Food, fiber source, mead production, distilled beverage production	<i>Leptonycteris yerbabuena</i>		Sexual: pollination	Puebla, Oaxaca	VU	4	[4,34,38,40,61]
<i>Agave lechuguilla</i> Torr.	Amole, Lechuguilla, Istle, Ixtle	Fiber source	<i>Hyles lineata, Xylocopa californica, Bombus pennsylvanicus, Eugenes fulgens, Calothorax lucifer, Archilochus alexandri, Selasphorus sp.</i>	<i>Apis mellifera, Selasphorus sp., vespidae, small bees</i>	Asexual: clonal Sexual: pollination	Hidalgo, San Luis Potosí, Tamaulipas, Coahuila, Chihuahua, Texas, Nuevo Mexico		2	[4,30,38,40,88]
<i>Agave lophantha</i> Schiede	Maguay Estoquillo	Ornament				South EU (Texas), Chihuahua, Veracruz		4	[4,38]
<i>Agave manantlanicola</i> Cuevas and Santana-Michel					Asexual: clonal	<i>Jalisco</i>	EN	5	[34,38,77]
<i>Agave maria-patriciae</i> * Cházaro and Arzaba						<i>Veracruz</i>		4	[38,89]

Table 2. Cont.

Species	Common Names	Uses	Pollinator	Floral Visitor	Reproduction	Distribution	IUCN Red List Category	Importance Score	References
<i>Agave megalodonta</i> * García-Mend. and D. Sandoval	Maguey espumoso	Occasional mezcal production				Oaxaca, Puebla, Guerrero	NT	4	[63]
<i>Agave mitis</i> Mart.	Maguey de Peña	Food, fiber source		<i>Chiroptera, Bombus, Sphingidae, hummingbirds</i>		Guanajuato, Coahuila, Puebla		3	[38,40,90]
<i>Agave montium-sancticaroli</i> García-Mend.	Jarcia	Mezcal production, food			Asexual: clonal	<i>Tamaulipas</i>	CR	8	[34,38,40,73]
<i>Agave multifilifera</i> Gentry	Chahuí	Ornament, fiber source, food, mead production, distilled beverage production				Chihuahua, Sinaloa, Nayarit, Sinaloa		4	[4,38,40]
<i>Agave muxii</i> * Zamudio and G. Aguilar-Gutiérrez					Asexual: clonal	Querétaro, San Luis Potosí		1	[91]
<i>Agave nizandensis</i> Cutak	Maguey de Nizanda	Ornament				<i>Oaxaca</i>	CR	12	[4,34,38,49,50]
<i>Agave nussaviorum</i> García-Mend.	Maguey Papalometl	Food, medical use, construction material, forage, distilled beverage production				<i>Oaxaca</i>		6	[38,40,69]
<i>Agave obscura</i> Schiede ex Schldtl.	Lechuguilla Bronca	Ornament			Asexual: clonal	Oaxaca, Puebla, San Luis Potosí, Tamaulipas, Veracruz		3	[4,55]
<i>Agave ocahui</i> Gentry	Amolillo	Ornament, fiber source			Sexual: pollination seeds	<i>Sonora</i>	NT	5	[4,34,38,40]

Table 2. Cont.

Species	Common Names	Uses	Pollinator	Floral Visitor	Reproduction	Distribution	IUCN Red List Category	Importance Score	References
<i>Agave oteroi</i> * G. D. Starr and T. J. Davis						Oaxaca, Puebla		2	[38,92]
<i>Agave ornithobroma</i> Gentry	Magüey Pajarito	Fiber source		<i>Psittaciformes</i>	Asexual: clonal	Sinaloa, Nayarit	VU	5	[4,34,38,49,50]
<i>Agave parviflora</i> Torr.	Tauta (Sonora)	Ornament, food	<i>Bombus sonorus</i> , <i>Xylocopa</i>		Sexual: pollination Asexual: clonal	Chihuahua, Sonora, Southwest EU, Argentina		5	[4,30,38–40,49,50,81,93]
<i>Agave peacockii</i> Croucher	Amol, Lechuguilla, Magüey de Ixtle, Magüey fibroso	Fiber source, food, mead production, distilled beverage production			Asexual: clonal	Hidalgo, Puebla, Oaxaca	VU	5	[4,34,38,40,49,50]
<i>Agave pedunculifera</i> Trel. ex Standll.	Lechuguilla	Ornament			Asexual: clonal	Sinaloa, Jalisco, Nayarit, Colima, Michoacán, Guerrero		3	[4,38]
<i>Agave pelona</i> Gentry	Bacanora, Mezcal pelón	Food, distilled beverage production, ornament, fiber source	<i>Leptonycteris yerbabuena</i>		Sexual: pollination	<i>Sonora</i>	CR	8	[4,34,38,40,44,78]
<i>Agave pendula</i> Schnittsp.		Ornament			Asexual: clonal	Veracruz, Chiapas, Oaxaca		3	[4,38,48]
<i>Agave petrophila</i> A. García-Mend. and E. Martínez		Ornament				Oaxaca, Guerrero	EN	6	[34,38,84]
<i>Agave polianthiflora</i> Gentry	Chahuí	Ornament, food, mead production			Asexual: clonal	Sonora, Chihuahua		5	[4,38,40,49,50]
<i>Agave polyacantha</i> Haw.						Tamaulipas, Veracruz		2	[4,38]
<i>Agave potrerana</i> Trel.		Ornament				Coahuila, Chihuahua		4	[4,38]

Table 2. Cont.

Species	Common Names	Uses	Pollinator	Floral Visitor	Reproduction	Distribution	IUCN Red List Category	Importance Score	References
<i>Agave quiotepecensis</i> García-Mend. and S. Franco	Agave Rabo de León	Fiber source, food, forage				Oaxaca	NT	6	[63,78]
<i>Agave rzedowskiana</i> P. Carrillo, Vega and R. Delgad.						Sinaloa, Jalisco		2	[38,94]
<i>Agave schidigera</i> Lem.	O'r, Lechuguilla Mansa	Fiber source				Chihuahua, Jalisco, Zacatecas, Sinaloa, Durango, Aguascalientes, Guerrero, San Luis Potosí, Michoacán		4	[4,38,40]
<i>Agave schottii</i> Engelm.	Icapánim, Amole	Leaves used as clothing soap, food, mead production	<i>Bombus</i> , <i>Xylocopa</i> , <i>Leptonycteris</i>	Hummingbirds, <i>Xylocopa</i> , <i>Apis</i>	Sexual: pollination Asexual: clonal	Northwest Chihuahua, Sonora, Southwest and South EU (Arizona and Nuevo Mexico)		2	[4,38,40,44,81,93]
<i>Agave striata</i> Zucc.	Junquillo, Estoquillo, Maguey espadín, Palmita, Peinecillo	Ornament, fiber source, mead production	<i>Leptonycteris yerbabuena</i> , <i>Leptonycteris nivalis</i> , <i>Choeronycteris mexicana</i>	<i>Apis mellifera</i> , <i>Lasioglossum lasioglossum</i> , <i>Bombus</i> , <i>Centris</i> , <i>Polistinae</i> , <i>Eugenes fulgens</i> , <i>Cynantus latirostris</i> , <i>Agrius cingulatus</i> , <i>Pachylia ficus</i> , <i>Sphinx lugens</i> , <i>Erinnyis ello</i>	Sexual: pollination Asexual: clonal	Coahuila, Nuevo León, Tamaulipas, Durango, Zacatecas, San Luis Potosí, Queretaro, Puebla		2	[4,30,38,40,81]
<i>Agave stricta</i> Salm-Dyck	Pelo de ángel	Ornament, fiber source, food				Puebla, Oaxaca		4	[4,38,40]
<i>Agave tenuifolia</i> Zamudio and E. Sánchez	Maguey de la Sierra Madre Oriental					Querétaro, Tamaulipas, Hidalgo, San Luis Potosí		2	[38,95]

Table 2. Cont.

Species	Common Names	Uses	Pollinator	Floral Visitor	Reproduction	Distribution	IUCN Red List Category	Importance Score	References
<i>Agave titanota</i> Gentry	Cachitún	Ornament, distilled beverage production			Sexual: seeds	<i>Oaxaca</i>	EN	8	[4,34,38,40,49,50]
<i>Agave triangularis</i> Jacobi	Cacalla, Maguey tunecho	Ornament, food, fiber source			Asexual: clonal	Puebla, Oaxaca	VU	4	[4,34,38,40]
<i>Agave univittata</i> Haw.	Estoquillo, Lechuguilla (Sonora), Mezortillo	Distilled beverage production, fiber source						4	[4,38–40]
<i>Agave vazquezgarciae</i> Cházaro and J. A. Lomelí		Food				<i>Jalisco</i>		6	[38,77,96]
<i>Agave victoriae-reginae</i> (complex) T. Moore	Noa	Food, Fiber source, distilled beverage production			Asexual: clonal	Chihuahua, Coahuila, Nuevo León, Durango		6	[4,38,40,49,50,55,97]
<i>Agave victoriae-reginae</i> (complex) Agave nickelsiae Rol.-Gross	Maguey del Rey Fernando				Asexual: clonal	<i>Coahuila</i>	CR	6	[34,38,97]
<i>Agave victoriae-reginae</i> (complex) Agave pintilla S. González, M. González and L. Reséndiz		Ornament			Sexual: seeds Asexual: rhizomes	<i>Durango</i>	CR	8	[34,38,97]
<i>Agave vilmoriniana</i> A. Berger	Ahué, Amole	Ornament, mead production, food, fiber source		<i>Apis, Leptonycteris, Hummingbirds</i>	Asexual: clonal bulbils Sexual: seeds	Sonora, Sinaloa, Durango, Jalisco, Aguascalientes, Southwest EU		3	[4,38,40,44]

Table 2. Cont.

Species	Common Names	Uses	Pollinator	Floral Visitor	Reproduction	Distribution	IUCN Red List Category	Importance Score	References
<i>Agave warelliana</i> De Smet ex T. Moore and Mast.						Guatemala, Chiapas	EN	4	[4,34,38,45]
<i>Agave wendtii</i> Cházaro						Veracruz	EN	6	[34,38,48]
<i>Agave xylonacantha</i> Salm-Dyck	Kuat' ma' ye	Food, fiber source		<i>Bombus</i> , <i>Leptonycteris</i> , hummingbirds, <i>Sphingidae</i> , <i>Choeronycteris mexicana</i>	Sexual: pollination, seeds	Hidalgo, Guanajuato, Querétaro, Tamaulipas, San Luis Potosí, Nuevo León		3	[4,38,40,59]
<i>Agave yuccifolia</i> DC		Ornament				Hidalgo		4	[4,38]

* Distribution both in *Italics* and **Bold** means the species is endemic from that state.

Table 3 is the criteria and corresponding weight, or score, of each species used to create Table 4 where the species with the highest total importance scores were placed under three possible categories mentioned below. The higher the score of the parameters in Table 3, the higher the risk of extinction for the species, therefore those species require more attention, although precautionary measures should also be taken with the rest of the species.

Table 3. Weighted score criteria regarding the data collected from the Agave species.

CR: 3 points			Knowledge of pollinator, floral visitor and reproduction: 0 points
EN: 2 points	E: 2 points	Has uses: 2 points	Knowledge of two or one aspects: 1 point
VU: 1 point	NE: 0 points	Zero uses: 0 points	No knowledge at all: 2 points
EW: special case (4)			

Table 4. Species of subgenus Agave and Littaea under the established categories subjected to their conservation status and biological environment.

Subgenus <i>Agave</i>	Subgenus <i>Littaea</i>
Severely endangered: facing possible extinction; avoid use of wild plants	
<i>Agave lurida</i>	<i>Agave nizandensis</i>
High risk of extinction: minimize use	
<i>Agave capensis</i>	<i>Agave albopilosa</i>
<i>Agave gypsophila</i>	<i>Agave chiapensis</i>
<i>Agave kristenii</i>	<i>Agave dasyliroides</i>
<i>Agave parrasana</i>	<i>Agave guiengola</i>
<i>Agave promontorii</i>	<i>Agave impressa</i>
<i>Agave valenciana</i>	<i>Agave kavandivi</i>
	<i>Agave montium-sancticaroli</i>
	<i>Agave pelona</i>
	<i>Agave titanota</i>
	<i>Agave pintilla (complex)</i>
Threatened: ensure and prepare a management and recovery plan	
<i>Agave abisaii</i>	<i>Agave arcedianoensis</i>
<i>Agave andreae</i>	<i>Agave bracteosa</i>
<i>Agave congesta</i>	<i>Agave chazaroi</i>
<i>Agave grijalvensis</i>	<i>Agave convallis</i>
<i>Agave guadalajarana</i>	<i>Agave doctorensis</i>
<i>Agave kewensis</i>	<i>Agave felgeri</i>
<i>Agave moranii</i>	<i>Agave gypsicola</i>
<i>Agave shrevei</i>	<i>Agave nussaviorum</i>
<i>Agave vizcainoensis</i>	<i>Agave petrophila</i>
<i>Agave zebra</i>	<i>Agave quioteppecensis</i>
	<i>Agave vazquezgarciae</i>
	<i>Agave victoria-reginae (complex)</i>
	<i>Agave nickelsiae (complex)</i>
	<i>Agave wendtii</i>

The species with the greatest importance score were arranged by subgenera and separated into three categories as follows: 1. Severely endangered: those species facing the possibility of extinction and that should be subjected to an urgent rescue and recovery program, considering the possibility of stopping harvest from the wild altogether. 2. High risk of extinction: these species need a recovery program and their harvest should be subjected to a strong conservation program. 3. Threatened species: management and recovery plans must be prepared and implemented for their harvest.

In order to evaluate the influence of score criteria in the Agave species, a Principal Component Analysis (PCA) was performed for each subgenus with the package FactoMineR [98], with the variables and categories used for the Importance score reported in Table 3.

3. Results and Discussion

The species distribution for the subgenera *Littaea* and *Agave* by state of Mexico are shown in Figures 1 and 2, respectively. It is noteworthy that there are no records in Baja California or Yucatán for *Littaea*, and for *Agave* there are only three reported species in Yucatán, while for both subgenera, there are no published records for Quintana Roo, Campeche and Tabasco, which can be due to a lack of sampling in these areas. In *Littaea* the highest richness occurs in the southern state of Oaxaca, while for *Agave* also Oaxaca is the richest state, along with Sonora and Chihuahua in the northwestern part of the country. Both subgenera have lower numbers of species in the center of the country.

In both subgenera, the proportion of plants used for food is similar (*Littaea* 18.6% and *Agave* 20.7%, Figure 3), while *Agave* species are much more used for making distilled beverages (mainly mezcal and tequila) (*Littaea* 8.9% and *Agave* 18.8%). The better-known species used for the production of distilled beverages were not considered at high risk, due to the proportionally greater knowledge available, although many of them might be endangered because of the lack of proper production management. For instance, these popular *Agaves* are now cultivated in massive monocultures, while preventing any sexual reproduction, and thus their genetic diversity is rapidly declining, such is the case of *A. tequilana* [6,18].

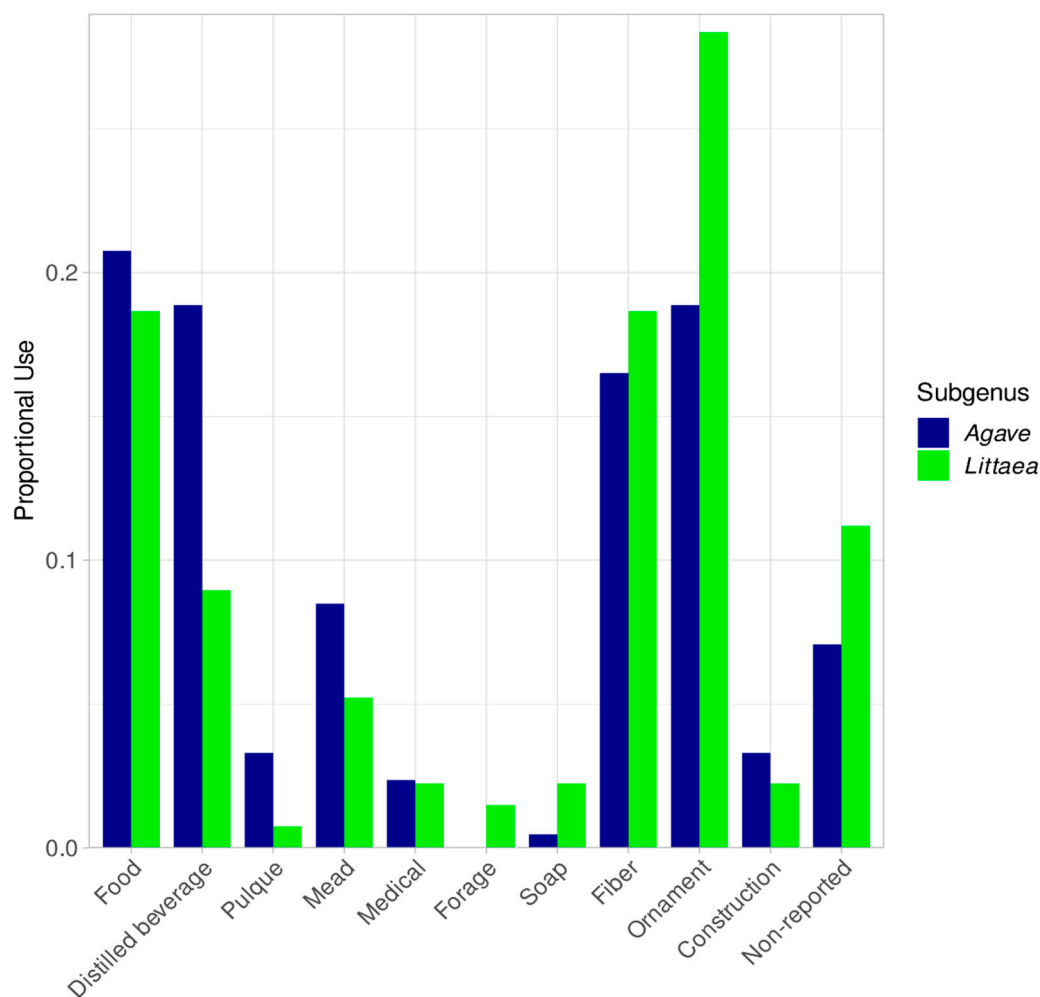


Figure 3. Proportional uses for *Littaea* and *Agave* subgenus.

The use for fibers is proportionally similar for *Littaea* and *Agave* (18.6% vs. 16.5%, respectively, Figure 3), compared to the use of ornamentals, where *Littaea* has a higher use (28.3% vs. 18.8%, respectively, Figure 3). Species used for fiber, such as *A. parrasana*, *A.*

albopilosa, *A. pelona* and *A. pintilla* were categorized at a high risk of extinction, while *A. lurida* and *A. nizandensis* are considered severely endangered and used as ornamentals. It is outstanding that in both subgenera the vast majority of the reported species have some kind of use (*Littea* 88.9% and *Agave* 93.03%, Figure 3).

It is important to note that most of the species included in Table 4, which are in need of specific conservation efforts, are used for fiber, ornamentals or have no known uses. There is very little information regarding pollinators and visitors in both subgenera for most species (more than 75%, Figure 4). Obviously, this is important information necessary to develop adequate conservation and management strategies. Bat pollination records are much greater in *Agave* than in *Littea* (Figure 5). For visitors, available information shows an important difference between subgenera (Figure 5), but more studies are needed to disentangle if these visitors are acting as true pollinators. There is ample information for the general type of reproduction in both subgenera (Figure 5), which may be due to the fact that as mentioned above, species from both subgenera are widely used, so there is an interest in having this information.

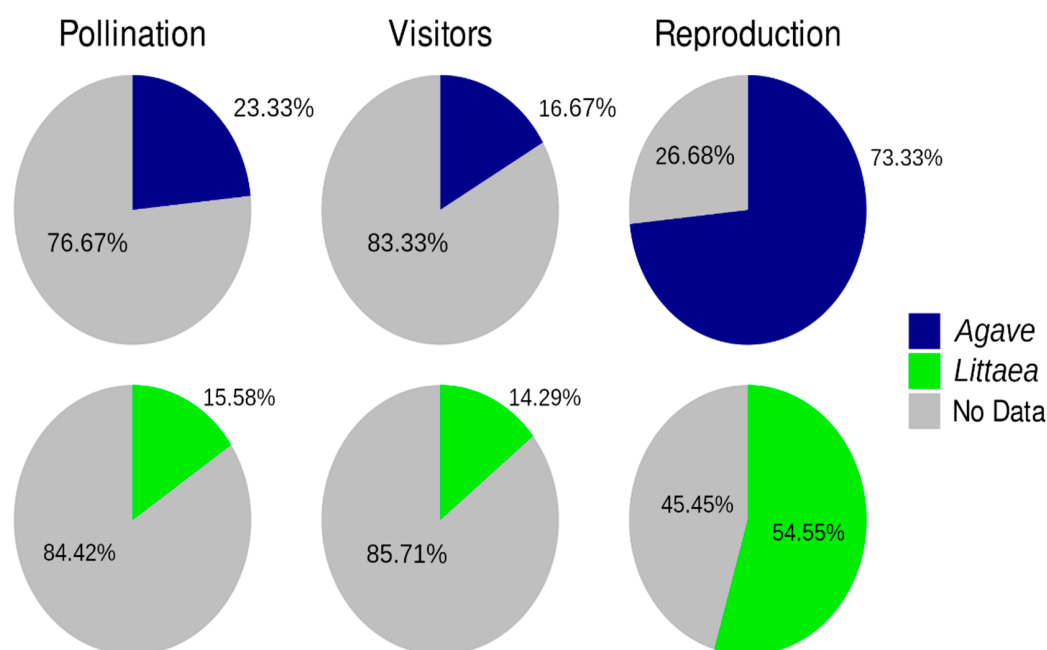


Figure 4. Proportion of the information available concerning pollination, visitors and reproduction for *Littea* and *Agave* subgenus. Grey areas represent the absence of information.

The PCA analyses of the different variables reported in Table 3 for both subgenera (Figures 6 and 7) were divided into four quadrants:

I. Species with higher importance scores are in Quadrant I. Many of these species are endemic and have many uses, so they can be considered species of main concern for conservation and management.

II. This quadrant contains endemic species with little use and with little or no reproductive information, which is mainly associated with a lack of interest, in contrast to species in quadrants I and III.

III. Species with many uses, so much more reproductive information is available, but a lower importance score than species in Quadrant I.

IV. Species that apparently have no use and are not endemic, but reproductive information is lacking for them.

Having an understanding of the status of each species of the genus *Agave* in Mexico is fundamental to species conservation and sustainable use, and to create awareness of the practices used nowadays on the utilization of the different species of the genus, averting the possible tragic outcome of extinction. Artisanal and industrial producers are invited

to maintain or opt for biodiversity-friendly alternatives for the conservation of agaves, practicing sustainable methods in their practices with agaves. Suggested approaches include the use of species considered at low risk of extinction for the production of distilled beverages (for instance *A. americana*, *A. duranguensis*, *A. karwinskii* or *A. macroacantha*) or ecofriendly production methods for agaves and their pollinators, such as the Bat Friendly Tequila and Mezcal project [99] created by UNAM (Universidad Nacional Autónoma de Mexico) and the Tequila Interchange Project [19,100]. This project seeks to preserve genetic diversity, seed production and pollinator populations, including bats, by allowing 5% of the agaves in agave fields destined for production of distillates to flower and produce seeds.

Restricting the use of agave species that are at risk may not be an adequate method for the conservation of some species, except in the most critically endangered cases, given that many Mexicans depend on their production to survive [2] and such restrictions might trigger a wave of poaching plants from wild populations. The great potential of sustainable management practices to ensure the future of particular agave species such as the maguey papalote (*A. cupreata*) and its derivatives and products has already been demonstrated. By providing greater visibility to sustainable practices by the local farmers, knowledge exchange between producers and science and preserving ancestral traditional production practices, agaves clearly have a profitable, sustainable, environment-friendly, socially responsible, and economically viable future [101,102].

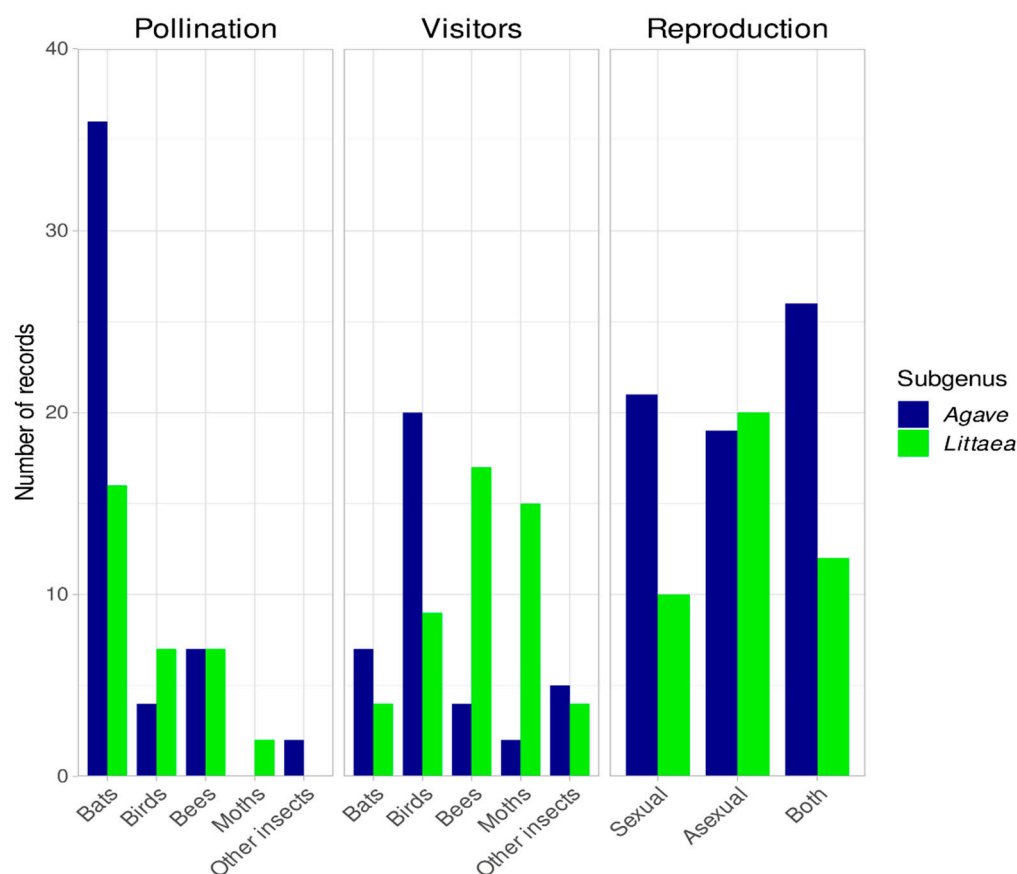


Figure 5. Number of records of the reproductive features analyzed for the *Littaea* and *Agave* subgenus. Pollinators were grouped in the following categories: Bats, Birds, Bees, Moths and Other insects; see Tables 1 and 2 for details.

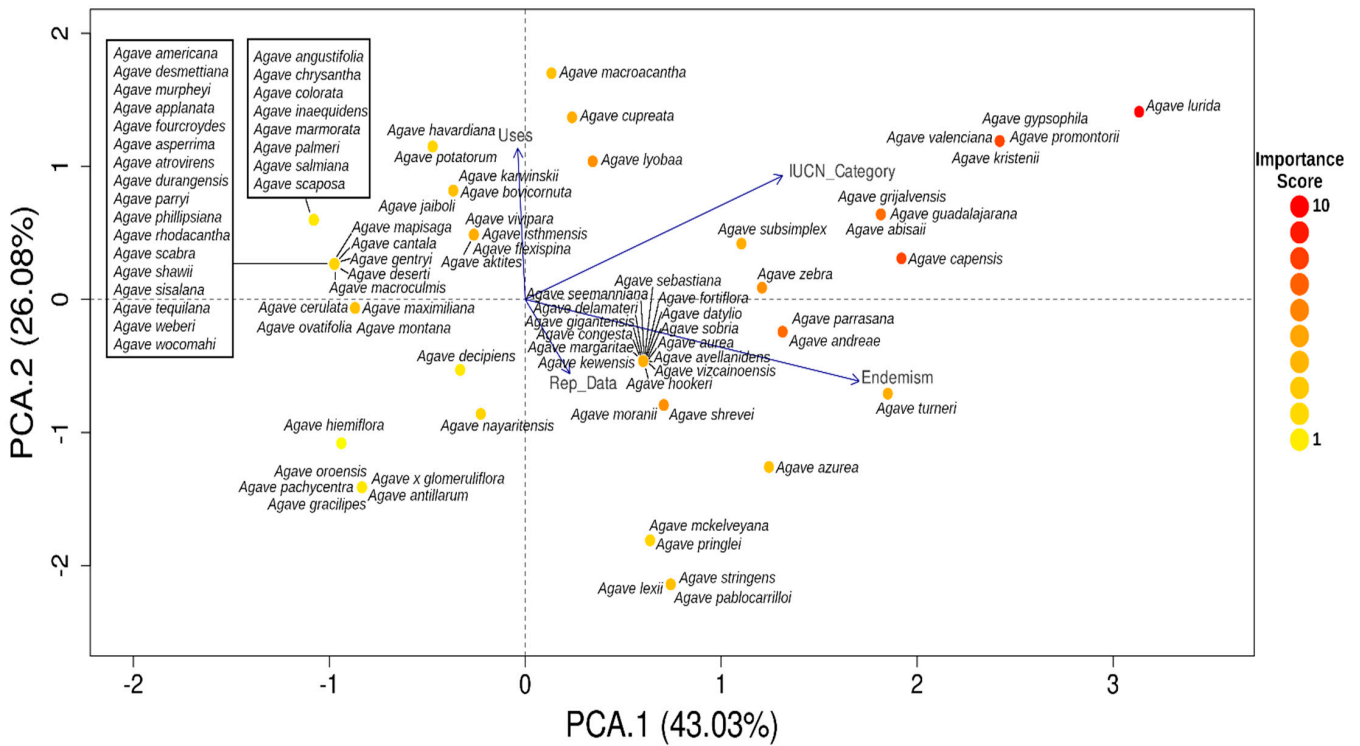


Figure 6. Principal Component Analysis of the *Agave* subgenus *Agave* using the IUCN category, uses, endemism, and reproductive data as variables (see Table 1 for details). Dot color represents the Importance Score obtained.

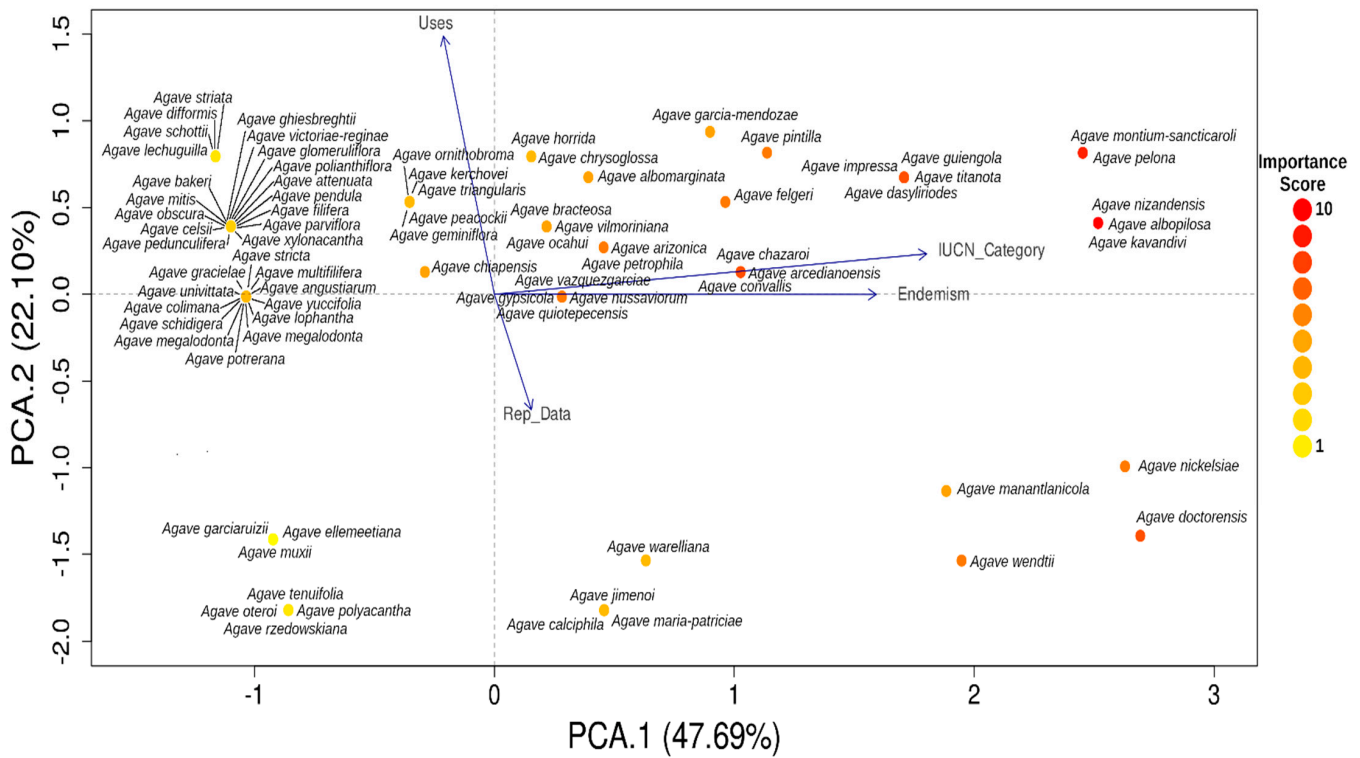


Figure 7. Principal Component Analysis of the *Agave* subgenus *Littaea* using the IUCN category, uses, endemism, and reproductive data as variables (see Table 2 for details). Dot color represents the Importance Score obtained.

It is also important to mention that the taxonomy of the genus *Agave* has been a complicated task for scientists, given that the genus is one of the most species-rich in the plant kingdom, and therefore recent discoveries that indicate synonymies and cryptic species are constant events, resulting in ongoing changes and descriptions of new species (see [31]). We must emphasize that there is still a great amount of data to collect on recently described species along with their distributions, natural history, current uses and pollinators to fully understand their biology, potential as providers of services and products, and conservation needs [31]. This study is just the beginning of an effort to update the knowledge about the uses, information available, and conservation needs of *Agave* species, and we hope to continue to facilitate updates in the future.

Agaves are among the most ecologically and economically important plants of Mexico. From an economic perspective, the role of *Agave* in production of distilled beverages and fibers, their ornamental relevance, and rural uses as living fences and building materials are very important for the country. In particular, exports of tequila and mezcal are undergoing a huge upward trend. Tequila exports went from 209 million liters in 2018 [103] to 249.4 million liters in 2021 with a net value of \$2.3 billion dollars [17]. Mezcal exports went from 2.7 million liters to 7.1 million liters only from 2016 to 2018, with a value of \$53 million dollars [103–105]. People directly or indirectly involved in the production of mezcal and tequila depend on the income generated by these distilled beverages. Additionally, Mexicans throughout the country depend on agaves for different products such as handicrafts, baskets or ropes made from their fibers, their use in Mexican cuisine for many typical dishes, and the preparation of the pre-Hispanic fermented drink, pulque.

Agaves are emblematic plants for Mexico and have been represented in codex, archaeological vestiges and cultural traditions since pre-Hispanic times, being nowadays an extensive source of income and everyday life uses. We must prevent the extinction of agave species due to greedy, industrialized production and cultivation practices. Respect for traditional procedures, clear recognition and incorporation of traditional indigenous knowledge and preserving, creating, and implementing the best sustainable production practices is absolutely crucial for the future of agaves and their pollinators. Local communities demand this with reason, Mexico deserves this, and the world should expect nothing less. The future of *Agave* and its pollinators should be one of appreciation, respect, and responsible consumption of agave products, solidly anchored in environmental sustainability, social justice, and economic viability.

4. Conclusions

Our analysis highlights the great diversity of species of the genus *Agave* in Mexico, the intense level of use that some species are undergoing, the species-specific extinction risk level, and the lack of knowledge about most species. In the process of constructing this diagnostic analysis, it was clear that most of the available information for most species is scarce given their usefulness and distribution.

For the agaves used in mezcal production, we believe that the most convenient solution is to opt for strict sustainable management practices and favorable reproduction methods, while avoiding monoculture procedures that could affect genetic variability, and reduce or avoid the use of pesticides that affects pollinators thus affecting gene flow and connectivity between species. It is important to favor the natural sexual reproduction of the species, promoting natural pollination and protecting their pollinators. Traditional practices should be encouraged for the management of agaves, recognizing monocultures and high industrialization processes as inadequate and only happening under highly controlled conditions, ensuring the future of biodiversity and emphasizing the knowledge of local, traditional producers.

Author Contributions: C.A.-M. wrote the first draft of the paper and research. J.G.-P., L.E.E. and E.A.-P. analyzed data, made the figures, interpreted the patterns and wrote the related sections. O.J.-B., J.G.-P., K.Y.R.M., E.A.-P., L.E.E. and R.A.M. commented and complemented subsequent versions. R.A.M. conceptualized and directed the study. All authors have read and agreed to the published version of the manuscript.

Funding: Funding was provided by GIZ Mexico, the Whitley Fund for Nature, Arizona Game and Fish Department, the Tequila Interchange Project, and the Bat Friendly Tequila and Mezcal Program. OJ, JGP, KM, EAP, RM and LEE research on *Agave* is funded by grant PAPIIT IG200122, UNAM to Luis E. Eguiarte and Rafael Lira, and project “Auge mezcalero y deudas de extinción: investigación interdisciplinaria hacia la sustentabilidad” granted to Alfonso Valiente Banuet by CONACyT-PRONACES, 319061-Sistemas socioecológicos. The page charges were paid with support of the operative budget of the Instituto de Ecología, UNAM assigned to LEE and RM.

Institutional Review Board Statement: Not applicable.

Informed Consent Statement: Not applicable.

Data Availability Statement: Data are available in the published literature as discussed in the article.

Acknowledgments: We gratefully acknowledge and thank GIZ MX for providing financial support and encouragement for conducting this analysis and research paper. We also thank Claudia Moreno from Universidad Nacional Autónoma de Mexico and Regina Sanchez from GIZ MX for providing technical and content support on the analysis and Pedro Jimenez for contributing specific agave information.

Conflicts of Interest: The authors declare that the research was conducted in the absence of any commercial or financial relationships that could be construed as a potential conflict of interest.

References

1. CONABIO (Comisión Nacional para el Conocimiento y Uso de la Biodiversidad). *Mezcales y Diversidad*, 2nd ed.; CONABIO: Mexico City, Mexico, 2006.
2. García-Mendoza, A.; Nieto-Sotelo, J.; Sánchez-Teyer, L.; Tapia, E.; Gómez-Leyva, J.; Tamayo-Ordoñez, M.C. Panorama del Aprovechamiento de los Agaves en Mexico. In *AGARED—Red Temática Mexicana Aprovechamiento Integral Sustentable y Biotecnología de los Agaves*; CONACYT, CIATEJ, AGARED: Guadalajara, Mexico, 2017; ISBN 978-607-97548-5-3.
3. García-Mendoza, A.J. Los Agaves de Mexico. *Rev. Cienc.* **2007**, *87*, 14–23.
4. Gentry, H.S. *Agaves of Continental North America*, 3rd ed.; University of Arizona Press: Tucson, AZ, USA, 2004.
5. Gross, S.M.; Martin, J.A.; Simpson, J.; Abraham-Juarez, M.J.; Wang, Z.; Visel, A. De novo transcriptome assembly of drought tolerant CAM plants, *Agave deserti* and *Agave tequilana*. *BMC Genom.* **2013**, *14*, 563. [[CrossRef](#)] [[PubMed](#)]
6. Colunga-GarcíaMarín, P.; Zizumbo-Villarreal, D.; Martínez-Torres, J. Tradiciones en el aprovechamiento de los agaves mexicanos: Una aportación a su protección legal y conservación biológica y cultural. In *En lo Ancestral Hay Futuro: Del Tequila, los Mezcales y Otros Agaves*; Colunga-García Marín, P., Eguiarte, L., LARGU, A., Zizumbo-Villarreal, S.y.D., Eds.; CICY-CONACYT-CONABIO-INE: Mérida, Mexico, 2007; pp. 229–248. [[CrossRef](#)]
7. Castetter, E.F.; Harvey, W.; Russell, A. The Early Utilization and Distribution of *Agave* in the American Southwest. University of New Mexico UNM Digital Repository. 1938. Available online: <https://www.gbif.org/es/occurrence/search?q=agavekewensis> (accessed on 17 April 2022).
8. Álvarez-Ríos, G.; Pacheco-Torres, F.; Figueredo-Urbina, C.; Casas, A. Management, Morphological and Genetic Diversity of Domesticated Agaves in Michoacán, Mexico. *J. Ethnobiol. Ethnomed.* **2020**, *16*, 2–17. [[CrossRef](#)] [[PubMed](#)]
9. Rodríguez, R.; Jiménez, J.F.; Del Real, J.I.; Salcedo, E.; Zamora, J.F.; Íñiguez, G. Utilización de Subproductos de la Industria Tequilera. Parte 11. Compostaje de Bagazo de Agave Crudo y Biosólidos Provenientes de una Planta de Tratamiento de Vinazas Tequileras. *Rev. Int. Contam. Ambie* **2013**, *29*, 303–313.
10. Quiñones, P.; Rodríguez, A.; Negrete, L. Extracción de fibras de agave para elaborar papel y artesanías. *Acta Univ.* **2010**, *20*, 77–83. [[CrossRef](#)]
11. Teklu, T. Characterization of Physico-chemical, Thermal, and Mechanical Properties of Ethiopian Sisal Fibers. *J. Nat. Fibers* **2022**, *19*, 3825–3836. [[CrossRef](#)]
12. Aguilar-Cristóbal, N.; Martínez, J.L.; Medina-Morales, M.A.; Nava-Cruz, N.Y. *Agave* biotechnology: An overview. *Crit. Rev. Biotechnol.* **2015**, *35*, 546–559. [[CrossRef](#)]
13. Álvarez-Duarte, M.C.; García-Moya, E.; Suárez-Espinosa, J.; Luna-Cavazos, M.; Rodríguez-Acosta, M. Conocimiento tradicional, cultivo y aprovechamiento del maguey pulquero en los municipios de Puebla y Tlaxcala. *Polibotánica* **2018**, *45*, 205–222. [[CrossRef](#)]
14. Merlín, J.D.G. Pulque, la Bebida de los Dioses al Alcance de Todos. 2017. Available online: https://www.redinnovagro.in/casosexito/2017/Maguey_Corporativo_San_Isidro.pdf (accessed on 21 May 2021).

15. Chavez-Angeles, M.; Pérez, M.; Vázquez, L.; Sánchez, M.; Pérez-García, O.; Hernandez, O. David vs. Goliath: La conservación de los agaves pulqueros (*Agave atrovirens*, salmiana o americana), el combate a la pobreza y la competencia con la industria global de la cerveza en la Reserva de la Biosfera Tehuacán-Cuicatlán. In Proceedings of the Segundo Congreso Nacional Agave-Mezcal, Oaxaca, Mexico, September 2019.
16. Navarro del Toro, G.J. El tequila para consumo nacional como una ventana de oportunidades para el pequeño productor agavero. *Rev. Iberoam. Contad. Econ. Adm.* **2021**, *10*. [[CrossRef](#)]
17. Cámara Nacional de la Industria Tequilera (CNIT). Información Básica de la Industria Tequilera. 2021. Available online: <https://www.tequileros.org/wp-content/uploads/2019/12/estadisticas.pdf> (accessed on 17 November 2021).
18. Ceja-Ramírez, R.; González-Eguiarte, D.R.; Ruiz-Corral, J.A.; Rendón-Salcido, L.A.; Flores-Garnica, J.G. Detección de restricciones en la producción de agave azul (*Agave tequilana* Weber var. azul) mediante percepción remota. *Terra Latinoam.* **2017**, *35*, 259–268. [[CrossRef](#)]
19. Trejo-Salazar, R.E.; Eguiarte-Frutos, L.E.; Suro-Piñera, D.; Medellín, R.A. Save our bats, save our tequila: Industry and science join forces to help bats and agaves. *Nat. Areas J.* **2016**, *36*, 523–530. [[CrossRef](#)]
20. Bautista-Justo, M.; García-Oropeza, L.; Barboza-Corona, J.E.; Parra-Negrete, L.A. El Agave tequilana Weber y la Producción de Tequila. *Acta Univ.* **2001**, *11*, 26–34. [[CrossRef](#)]
21. García-Meza, P.; Mandujano-Bueno, A.; Paredes-Melesio, R.; Pons-Hernández, J.L. Diversidad genética del maguey (*Agave* spp.) en las sierras y llanuras del norte de Guanajuato. *Rev. Mex. Cienc. Agric.* **2018**, *9*, 511–523. [[CrossRef](#)]
22. Solís-García, A.; Rivas-García, P.; Escamilla-Alvarado, C.; Rico-Martínez, R.; Bravo-Sánchez, M.; Botello-Álvarez, J. Methanol Production Kinetics during Agave Cooking for Mezcal Industry. *Revista Mexicana De Ingeniería Química* **2017**, *16*, 827–834. Available online: <https://www.redalyc.org/articulo.oa?id=62053304012> (accessed on 5 February 2021).
23. Eguiarte, L.E.; González-González, A. De genes y magueyes estudio y conservación de los recursos genéticos del tequila y el mezcal. *Rev. Cienc.* **2007**, *87*. Available online: <http://rmiq.org/ojs311/index.php/rmiq/article/view/944> (accessed on 18 July 2020).
24. Klimova, A.; Ruiz Mondragón, K.Y.; Molina Freaner, F.; Aguirre-Planter, E.; Eguiarte, L.E. Genomic analyses of wild and cultivated bacanora agave (*Agave angustifolia* var. *pacifica*) reveal inbreeding, few signs of cultivation history and shallow population structure. *Plants* **2022**, *11*, 1426. [[CrossRef](#)]
25. Gutiérrez-Coronado, M.L.; Acedo-Félix, E.; Valenzuela-Quintanar, A.I. Industria del Bacanora y su Proceso de Elaboración. *Cienc. Tecnol. Aliment.* **2007**, *5*, 394–404. [[CrossRef](#)]
26. Rivera-Lugo, M.; García-Mendoza, A.; Simpson, J.; Solano, E.; Gil-Vega, K. Taxonomic implications of the morphological and genetic variation of cultivated and domesticated populations of the *Agave angustifolia* complex (Agavoideae, Asparagaceae) in Oaxaca, Mexico. *Plant Syst. Evol.* **2018**, *304*, 969–979. [[CrossRef](#)]
27. Cabrera-Toledo, D.; Vargas-Ponce, O.; Ascencio-Ramírez, S.; Valadez-Sandoval, L.M.; Pérez-Alquicira, J.; Morales-Saavedra, J.; Huerta-Galván, O.F. Morphological and Genetic Variation in Monocultures, Forestry Systems and Wild Populations of *Agave maximiliana* of Western Mexico: Implications for Its Conservation. *Front. Plant Sci.* **2020**, *11*, 817. [[CrossRef](#)]
28. Eguiarte, L.E.; Souza, V.; Silva-Montellano, A. Evolución de la familia *Agavaceae*: Filogenia, biología reproductiva y genética de poblaciones. *Boletín Sociedad Botánica México* **2000**, *66*, 131–150. [[CrossRef](#)]
29. Félix-Valdez, L.I.; Vargas-Ponce, O.; Cabrera-Toledo, D.; Casas, A.; Cibrián-Jaramillo, A.; Cruz-Larios, L. Effects of traditional management for mescal production on the diversity and genetic structure of *Agave potatorum* (Asparagaceae) in central Mexico. *Genet. Resour. Crop Evol.* **2015**, *63*, 1255–1271. [[CrossRef](#)]
30. Eguiarte, L.E.; Jiménez-Barrón, O.A.; Aguirre-Planter, E.; Scheinvar, E.; Gámez, N.; Gasca-Pineda, J.; Castellanos-Morales, G.; Moreno-Letelier, A.; Souza, V. Evolutionary ecology of *Agave*: Distribution patterns, phylogeny, and coevolution (an homage to Howard S. Gentry). *Am. J. Bot.* **2021**, *108*, 216–235. [[CrossRef](#)] [[PubMed](#)]
31. Eguiarte, L.E.; Aguirre-Planter, E.; Aguirre, X.; Colín, R.; González, A.; Rocha, M.; Scheinvar, E.; Trejo, L.; Souza, V. From isozymes to genomics: Population genetics and conservation of *Agave* in Mexico. *Bot. Rev.* **2013**, *79*, 483–506. [[CrossRef](#)]
32. Gil-Vega, K.; Chavira, M.G.; de la Vega, O.M.; Simpson, J.; Vandemark, G. Analysis of genetic diversity in *Agave tequilana* var. *azul* using RAPD markers. *Euphytica* **2001**, *119*, 335–341. [[CrossRef](#)]
33. Secretaría de Comercio y Fomento Industrial. *Norma Oficial Mexicana NOM-070-SCFI-1994. Bebidas Alcohólicas-Mezcal-Especificaciones*; Diario Oficial de la Federación: Mexico City, Mexico, 1997.
34. International Union for the Conservation of Nature. The IUCN Red List of Threatened Species. Version 2020-2. 2020. Available online: <https://www.iucnredlist.org> (accessed on 25 September 2020).
35. R Core Team. *R: A Language and Environment for Statistical Computing*; R Foundation for Statistical Computing: Vienna, Austria; Available online: <https://www.R-project.org/> (accessed on 11 July 2022).
36. Wickham, H. *ggplot2: Elegant Graphics for Data Analysis*; Springer: New York, NY, USA, 2016.
37. Vázquez-García, J.; Muñoz-Castro, M.; Sahagún-Godínez, E.; Cházaro-Basáñez, M.; De Castro-Arce, E.; Nieves-Hernández, G.; Padilla-Lepe, J. Four New Species of *Agave* (Agavaceae) of the Marmoratae Group. *Syst. Bot.* **2013**, *38*, 320–331. [[CrossRef](#)]
38. Colunga-GarcíaMarín, P. CONABIO. Base de Datos de Nombres Técnicos o de Uso Común en el Aprovechamiento de los Agaves en México. Version 1.9. 2021. Available online: <https://www.gbif.org/dataset/d9bceb64-0334-43e8-868e-72d4cd506ca1> (accessed on 21 November 2021).

39. TodoMezcal 2012. Listado de Agaves por su Nombre Popular. Available online: <http://www.todomezcal.com/AgavesTec/AgavesListadoPopular.html> (accessed on 7 January 2021).
40. Colunga-GarcíaMarín, P.; Torres-García, I.; Casas, A.; Figueredo, C.; Rangel-Landa, S.; Lemus, A.; Vargas-Ponce, O.; Toledo, D.; Zizumbo-Villarreal, D.; Aguirre-Dugua, X.; et al. Los agaves y las prácticas mesoamericanas de aprovechamiento, manejo y domesticación. *Domesticación Continente Americano* **2017**, *11*, 273–308.
41. Ramírez, H.; Peña, C.; Aguirre, J.; Reyes, J.; Sánchez, A.; Valle, S. Seed germination temperatures of eight Mexican Agave species with economic importance. *Plant Species Biol.* **2012**, *27*, 124–137. [[CrossRef](#)]
42. Torres-García, I.; García-Mendoza, A.; Sandoval, D. *Agave guadalajarana*, Masparillo THE IUCN RED LIST OF THREATENED SPECIES™. 2019. Available online: <https://www.iucnredlist.org/species/115629200/116353893> (accessed on 9 July 2020).
43. Lachenmeier, D.; Sohnius, E.; Attig, R.; López, M. Quantification of Selected Volatile Constituents and Anions in Mexican Agave Spirits (Tequila, Mezcal, Sotol, Bacanora). *J. Agric. Food Chem.* **2006**, *54*, 3911–3915. [[CrossRef](#)]
44. Turner, R.; Bowers, J.; Burgess, T. *Sonoran Desert Plants: An Ecological Atlas*; The University of Arizona Press: Tucson, AZ, USA, 1995.
45. NaturaLista. Available online: <https://www.naturalista.mx/> (accessed on 1 July 2020).
46. Webb, R.; Starr, G. The Real *Agave gigantensis* in Baja California Sur, Mexico. *Cactus Succul. J.* **2014**, *86*, 4–11. [[CrossRef](#)]
47. Webb, R. Gentry Revisited: The Agaves of Baja California, Mexico. *Halsetonia* **2015**, *20*, 64–108. [[CrossRef](#)]
48. Enciclovida. CONABIO. Available online: <https://enciclovida.mx/> (accessed on 1 July 2020).
49. NOM-059-SEMARNAT-2010. Modificación del Anexo Normativo III, Lista de Especies en Riesgo de la Norma Oficial Mexicana NOM-059-SEMARNAT-2010, Protección Ambiental-Especies Nativas de Mexico de Flora y Fauna Silvestres-Categorías de Riesgo y Especificaciones para su Inclusión, Exclusión o Cambio-Lista de Especies en Riesgo, Publicada el 30 de Diciembre de 2010. Diario Oficial de la Federación 14 Noviembre. 2019. Available online: <https://www.gob.mx/profepa/documentos/norma-oficial-mexicana-nom-059-semarnat-2010> (accessed on 18 September 2020).
50. SEMARNAT. Modificación del Anexo Normativo III, Lista de Especies en Riesgo de la Norma Oficial Mexicana NOM-059-SEMARNAT-2010, Protección Ambiental-Especies Nativas de Mexico de Flora y Fauna Silvestres-Categorías de Riesgo y Especificaciones para su Inclusión, Exclusión o Cambio-Lista de Especies en Riesgo, Publicada el 30 de Diciembre de 2010. Diario Oficial de la Federación 14 Noviembre. 2019. Available online: http://www.dof.gob.mx/nota_detalle.php?codigo=5578808&fecha=14/11/2019 (accessed on 2 July 2020).
51. Parker, K.; Hamrick, J.; Hodgson, W.; Trapnell, D.; Parker, A.; Kuzoff, R. Genetic consequences of pre-Columbian cultivation for *Agave murpheyi* and *A. delamateri* (Agavaceae). *Am. J. Bot.* **2007**, *94*, 1479–1490. [[CrossRef](#)] [[PubMed](#)]
52. Navarro-Quezada, A.; González-Chauvet, R.; Molina-Freaner, F.; Eguiarte, L. Genetic differentiation in the *Agave deserti* (Agavaceae) complex of the Sonoran desert. *Heredity* **2003**, *90*, 220–227. [[CrossRef](#)] [[PubMed](#)]
53. Torres-García, I.; León, A. *Aspectos de la Fenología, Visitantes Florales y Polinización de Agave inaequidens Koch ssp. Inaequidens (Agavaceae) en el Estado de Michoacán*; Facultad de Biología, Universidad Michoacana de San Nicolás de Hidalgo: Morelia, Mexico, 2012.
54. Lemke, T.O. Foraging Ecology of the Long-Nosed Bat, *Glossophaga Soricina*, with Respect to Resource Availability. *Ecol. Ecol. Soc. Am.* **1984**, *65*, 538–548. [[CrossRef](#)]
55. Monja-Mío, K.; Herrera-Alamillo, M.; Sánchez-Teyer, L.; Robert, M. Breeding Strategies to Improve Production of Agave (*Agave* spp.). In *Advances in Plant Breeding Strategies: Industrial and Food Crops*; Springer: Cham, Switzerland, 2019. [[CrossRef](#)]
56. Moreno-Valdez, A.; Honeycutt, R.; Grant, W. Colony Dynamics of *Leptonycteris nivalis* (Mexican Long-Nosed Bat) Related to Flowering *Agave* in Northern Mexico. *J. Mammal.* **2004**, *85*, 453–459. [[CrossRef](#)]
57. Sánchez-González, A.; Octavio-Aguilar, P.; Barrientos-Lozano, L.; Meerow, A.W. Effect of Elevation Strata on Morphological Variation of Two Agave Species with Different Niche Amplitude. *Int. J. Plant Sci.* **2019**, *180*, 892–901. [[CrossRef](#)]
58. Sanchez-Urbina, A.; Ventura-Canseco, L.M.C.; Ayora-Talavera, T.; Abud-Archilla, M.; Peez-Farrera, M.A.; Dendooven, L.; Gutierrez-Miceli, F.A. Seed Germination and in vitro Propagation of *Agave grijalvensis* an Endemic Endangered Mexican Species. *Asian J. Plant Sci.* **2008**, *7*, 752–756. [[CrossRef](#)]
59. Burke, R.; Frey, J.; Ganguli, A.; Stoner, K. Species distribution modeling supports “nectar corridor” hypothesis for migratory nectarivorous bats and conservation of tropical dry forests. *Divers. Distrib.* **2019**, *25*, 1399–1415. [[CrossRef](#)]
60. England, A. Pollination Ecology of *Agave palmeri* in New Mexico, and Landscape Use of *Leptonycteris nivalis* in Relation to Agaves. 2012. Available online: https://digitalrepository.unm.edu/biol_etds/31 (accessed on 13 July 2020).
61. Hernández-Ramírez, G.; Herrera, G. Allocation of endogenous nutrients for reproduction in the lesser long-nosed bat (*Leptonycteris yerbabuenae*) in central Mexico. *J. Mammal.* **2016**, *97*, 23–31. [[CrossRef](#)]
62. García-Morales, L.; García-Jiménez, J.; Iamónico, D. *Agave lexii* (Asparagaceae: Agavoideae), a New Species from Mexico. *Novon* **2019**, *27*, 201–204. [[CrossRef](#)]
63. García-Mendoza, A.; Franco-Martínez, S.; Sandoval-Gutiérrez, D. Cuatro especies nuevas de Agave (Asparagaceae, Agavoideae) del sur de Mexico. *Acta Bot. Mex.* **2019**, *126*. [[CrossRef](#)]
64. Russell, F.; Wilson, D. *Leptonycteris yerbabuenae*. *Mamm. Species* **2006**, *797*, 1–7. [[CrossRef](#)]
65. Arizaga, S.; Ezcurra, E.; Peters, E.; Arellano, F.; Vega, E. Pollination Ecology of *Agave macroacantha* (Agavaceae) in a Mexican Tropical Desert. I. Floral Biology and Pollination Mechanisms. *Am. J. Bot.* **2000**, *87*, 1011–1017. [[CrossRef](#)] [[PubMed](#)]

66. Mora-López, L.; Reyes-Agüero, A.; Flores-Flores, J.; Peña-Valdivia, C.; Aguirre-Rivera, R. Variación morfológica y humanización de la sección Salmianae del género *Agave*. *Agrociencia* **2011**, *45*, 1405–3195.
67. García-Mendoza, A.; Sandoval, D.; Torres-García, I.; Casas, A.; González-Elizondo, M. *Agave maximiliana*, Lechuguilla 2019. THE IUCN RED LIST OF THREATENED SPECIES™. Available online: www.iucnredlist.org (accessed on 13 November 2020).
68. Hodgson, W.; Salywon, A.; Doelle, W. Hohokam Lost Crop Found: A New *Agave* (Agavaceae) Species Only Known from Large-scale pre-Columbian Agricultural Fields in Southern Arizona. *Syst. Bot.* **2018**, *43*, 734–740. [[CrossRef](#)]
69. García-Mendoza, A. Revisión Taxonómica del complejo *Agave potatorum* Zucc. (Agavaceae): Nuevos Taxa y Neotipificación. *Acta Bot. Mex.* **2010**, *91*, 71–93. [[CrossRef](#)]
70. Zizumbo-Villarreal, D.; Colunga-García, P.; Vargas-Ponce, O.; Rosales-Adame, J.; Nieto-Olivares, R. Tecnología agrícola tradicional en la producción de vino mezcal (mezcal y tequila) en el sur de Jalisco, Mexico. *Rev. Geogr. Agric.* **2009**, *42*, 1–18.
71. Pereira, B.; Valente, A.; Paz, J. A new steroidal saponin from *Agave shrevei*. *Nat. Prod. Res.* **2006**, *20*, 385–390. [[CrossRef](#)]
72. Cházaro-Basáñez, M.; Vázquez-García, J.; Vargas-Rodríguez, Y. *Agave valenciana* (Agavaceae), A Gigantic New Species from Jalisco, Mexico. *Novon* **2005**, *15*, 525–530.
73. García-Mendoza, A.; Jacques-Hernandez, C.; Salazar-Bravo, A. A new species of *Agave*, subgenus *Littaea* (Agavaceae) of Tamaulipas, Mexico. *J. Bot. Res. Inst. Texas* **2007**, *1*, 79–84.
74. Starr, G.; Kemble, B.; Nixon, R. *Agave pelona* and *Agave zebra* in the Sierra El Viejo. *Cactus Succul. J.* **2008**, *80*, 170–175. [[CrossRef](#)]
75. Cabral, I.; Villarreal-Quintanilla, J.A.; Estrada, E. *Agave albopilosa* (Agavaceae, subgénero *Littaea*, grupo *Striatae*), una especie nueva de la Sierra Madre Oriental en el noeste de Mexico. *Acta Bot. Mex.* **2007**, *80*, 51–57. Available online: <https://www.redalyc.org/pdf/574/57408005.pdf> (accessed on 12 November 2020). [[CrossRef](#)]
76. Hernández-Vera, G.; Vázquez-García, J.; Padilla-Lepe, J.; Nieves-Hernández, G. *Agave garciaruii* (Asparagaceae) a new species from the Chorros del Varal State Reserve in western Mexico. *Phytotaxa* **2019**, *422*, 273–288. [[CrossRef](#)]
77. Cuevas Guzmán, R.; Santana-Michel, F.; Balcazar-Medina, O. *Agave manantlanicola* (Agavaceae), a new species from western Mexico. *Brittonia* **2012**, *64*, 330–335. [[CrossRef](#)]
78. Starr, G. A new *Agave* species (Asparagaceae, Agavoideae), from southern Oaxaca, Mexico. *Phytotaxa* **2020**, *428*, 73–80. [[CrossRef](#)]
79. Laboratorio de Plantas Vasculares: Facultad de Ciencias UNAM. *Agave Celsii*. Available online: http://biologia.fciencias.unam.mx/plantasvasculares/ArbolesArbustosFCiencias/Angiospermas/agave_celsii.html (accessed on 11 January 2021).
80. León-Vázquez, N.; Campos-Ángeles, G.; Enríquez-Del Valle, J.; Velasco-Velasco, V.; Marini-Zúñiga, F.; Rodríguez-Ortiz, G. Diversidad de especies de agave en San Miguel Tilquiapam, Ocotlán, Oaxaca/Diversity of agave species from San Miguel Tilquiapam, Ocotlán, Oaxaca. *Rev. Mex. Cienc. Agric.* **2013**, *4*, 1185–1195.
81. Trejo-Salazar, R.; Scheinvar, E.; Eguiarte, L.E. ¿Quién poliniza realmente los agaves? Diversidad de visitantes florales en 3 especies de *Agave* (Agavoideae: Asparagaceae). *Rev. Mex. Biodivers.* **2015**, *86*. [[CrossRef](#)]
82. Hernandez-Sandoval, L.; Magallan-Hernandez, F. *Agave doctorensis* (Agavaceae), a new species from Sierra EL Doctor, Queretaro, Mexico. *Brittonia* **2015**, *67*, 1–4. Available online: <http://www.jstor.org/stable/24694441> (accessed on 8 August 2020). [[CrossRef](#)]
83. Thiede, J. A review of *Agave ellemetiana* K.Koch (Asparagaceae/Agavaceae). *Bradleya* **2014**, *32*, 145–163. [[CrossRef](#)]
84. Galván-Villanueva, R.; Zamudio, S. A new species of *Agave* subgenus *Littaea* (Agavaceae) of the state of Queretaro, Mexico. *Acta Bot. Mex.* **2013**, *105*, 1–10. [[CrossRef](#)]
85. Flores-Torres, A.; Galindo-Escamilla, A. Pollination biology of *Agave horrida* (Agavaceae) in the Chichinautzin mountain range, Central Mexico. *Bot. Sci.* **2017**, *95*, 423–431. [[CrossRef](#)]
86. Cházaro-Basáñez, M.; Vázquez-García, J. *Agave jimenoii* (Polycephalae group, Asparagaceae) a new species from the Totonacapan region, Veracruz, Mexico. *Phytotaxa* **2013**, *134*, 55–60. [[CrossRef](#)]
87. García-Mendoza, A.; Chávez-Rendón, C. *Agave kavandivi* (Agavaceae: Grupo *Striatae*), una especie nueva de Oaxaca, Mexico. *Rev. Mex. Biodivers.* **2013**, *84*, 1070–1076. [[CrossRef](#)]
88. Silva-Montellano, A.; Eguiarte, L.E. Geographic patterns in the reproductive ecology of *Agave lechuguilla* (Agavaceae) in the Chihuahuan desert. I. Floral characteristics, visitors, and fecundity. *Am. J. Bot.* **2003**, *90*, 377–387. [[CrossRef](#)]
89. Arzaba-Villalba, C.; Cházaro-Basáñez, M.; Viveros-Colorado, C. *Agave maria-patriciae* (Polycephalae Group: Asparagaceae), a new species from Central Coastal Veracruz, Mexico. *Phytotaxa* **2018**, *360*, 263–286. [[CrossRef](#)]
90. Thiede, J. A review of *Agave mitis* (Asparagaceae/Agavaceae). *Bradleya* **2016**, *34*, 200–216. [[CrossRef](#)]
91. Zamudio, S.; Aguilar-Gutiérrez, G. Dos especies nuevas de Asparagaceae (Agavoideae) de los estados de Guanajuato y Querétaro, Mexico. *Brittonia* **2020**, *72*, 154–163. [[CrossRef](#)]
92. Starr, G.; Davis, T. *Agave oteroi* (Asparagaceae/Agavoideae) a new species from North-central Oaxaca, Mexico. *Cactus Succul. J.* **2019**, *91*, 134–143.
93. Austin, D. *Baboquivari Mountain Plants: Identification, Ecology and Entomology*; The University of Arizona Press: Tucson, AZ, USA, 2010.
94. Crillo-Reyes, P.; Aviña, R.; Ramírez-Delgado, R. *Agave rzedowskiana*, a new species in subgenus *Littaea* (Agavaceae) from western Mexico. *Brittonia* **2003**, *55*, 240–244. [[CrossRef](#)]
95. Martínez, E.; Zamudio, S. Una nueva especie de *Agave* del subgénero *Littaea* (Agavaceae) de la Sierra Madre Oriental, Mexico. *Acta Bot. Mex.* **1995**, *32*, 47–52. [[CrossRef](#)]
96. Cházaro-Basáñez, M.; Valencia-Pelayo, O.; Lomelí-Senciación, J.; Vargas-Rodríguez, Y. *Agave vazquezgarciae* (Agavaceae), a New Species from Jalisco, Mexico. *Novon* **2009**, *16*, 458–461. [[CrossRef](#)]

97. Gonzalez-Elizondo, M.; Elizondo, M.; Enríquez, I.; Reséndiz-Rojas, L.; Retana, F. The *Agave victoriae reginae* complex (Agavaceae). *Acta Bot. Mex.* **2011**, *95*, 65–94. [[CrossRef](#)]
98. Le, S.; Josse, J.; Husson, F. FactoMineR: An R Package for Multivariate Analysis. *J. Stat. Softw.* **2008**, 1–18. [[CrossRef](#)]
99. Bat Friendly: Tequila Interchange Project. Universidad Nacional Autónoma de Mexico. Available online: <https://www.batfriendly.org/inicio/> (accessed on 19 August 2021).
100. Juárez, C. ¡A brindar con tequila y mezcal amigables con los murciélagos. *Divulgación de la Ciencia UNAM*. Universidad Nacional Autónoma de Mexico, Mexico. 2016. Available online: http://ciencia.unam.mx/leer/608/A_brindar_con_tequila_y_mezcal_amigables_con_los_murcielagos (accessed on 7 September 2021).
101. Illsley, C.; Vega, E.; Pisanty, I.; Tlacotempa, A.; García, P.; Morales, P.; Rivera, G.; García, J.; Jiménez, V.; Castro, F.; et al. Maguey papalote: Hacia el manejo campesino sustentable de un recurso colectivo en el trópico seco de Guerrero, Mexico. In *En lo Ancestral Hay Futuro: Del Tequila, los Mezcales y Otros Agaves*; CONACYT: Merida, Mexico, 2007; Volume 1, pp. 319–340. ISBN 978-968-6532-18-0.
102. Avendaño-Arrazate, C.H.; Iracheta-Donjuan, L.; Gódinez-Aguilar, J.C.; López-Gómez, P.; Barrios-Ayala, A. Caracterización morfológica de *Agave cupreata*, especie endémica de Mexico. *Phyton* **2015**, *84*, 148–162. [[CrossRef](#)]
103. Instituto Nacional de Estadística, Geografía e Informática, INEGI 2019. Conociendo la Industria del Tequila y Mezcal. Available online: <https://www.inforural.com.mx/wp-content/uploads/2019/07/Conociendo-la-Industria-del-Tequila-y-el-Mezcal.pdf> (accessed on 18 July 2021).
104. Centro de Estudios para el Desarrollo Rural Sustentable y la Soberanía Alimentaria (CEDRSSA). Reporte: La Producción y el Comercio de Cerveza, Tequila y Mezcal en Mexico. Palacio Legislativo de San Lázaro, Ciudad de Mexico. 2019, pp. 3–5. Available online: http://www.cedrssa.gob.mx/files/b/13/42producci%C3%B3n_comercio_mezcal_tequila_cerveza.pdf (accessed on 25 September 2021).
105. Consejo Regulador de Mezcal 2020. Available online: <https://www.crm.org.mx/> (accessed on 21 January 2021).

Disclaimer/Publisher’s Note: The statements, opinions and data contained in all publications are solely those of the individual author(s) and contributor(s) and not of MDPI and/or the editor(s). MDPI and/or the editor(s) disclaim responsibility for any injury to people or property resulting from any ideas, methods, instructions or products referred to in the content.