

# Testing the effectiveness of *rbcLa* DNA-barcoding for species discrimination in tropical montane cloud forest vascular plants (Oaxaca, Mexico) using BLAST, genetic distance, and tree-based methods

Sonia Trujillo-Argueta, Rafael F. del Castillo and Abril Velasco-Murguía

CIIDIR Oaxaca, Instituto Politécnico Nacional, Xoxocotlán, Oaxaca, Mexico

## ABSTRACT

DNA-barcoding is a species identification tool that uses a short section of the genome that provides a genetic signature of the species. The main advantage of this novel technique is that it requires a small sample of tissue from the tested organism. In most animal groups, this technique is very effective. However, in plants, the recommended standard markers, such as *rbcLa*, may not always work, and their efficacy remains to be tested in many plant groups, particularly from the Neotropical region. We examined the discriminating power of *rbcLa* in 55 tropical cloud forest vascular plant species from 38 families (Oaxaca, Mexico). We followed the CBOL criteria using BLASTn, genetic distance, and monophyly tree-based analyses (neighbor-joining, NJ, maximum likelihood, ML, and Bayesian inference, BI). *rbcLa* universal primers amplified 69.0% of the samples and yielded 91.3% bi-directional sequences. Sixty-three new *rbcLa* sequences were established. BLAST discriminates 80.8% of the genus but only 15.4% of the species. There was nil minimum interspecific genetic distances in *Quercus*, *Oreopanax*, and *Daphnopsis*. Contrastingly, Ericaceae (5.6%), Euphorbiaceae (4.6%), and Asteraceae (3.3%) species displayed the highest within-family genetic distances. According to the most recent angiosperm classification, NJ and ML trees successfully resolved (100%) monophyletic species. ML trees showed the highest mean branch support value (87.3%). Only NJ and ML trees could successfully discriminate *Quercus* species belonging to different subsections: *Quercus martinezii* (white oaks) from *Q. callophylla* and *Q. laurina* (red oaks). The ML topology could distinguish species in the Solanaceae clade with similar BLAST matches. Also, the BI topology showed a polytomy in this clade, and the NJ tree displayed low-support values. We do not recommend genetic-distance approaches for species discrimination. Severe shortages of *rbcLa* sequences in public databases of neotropical species hindered effective BLAST comparisons. Instead, ML tree-based analysis displays the highest species discrimination among the tree-based analyses. With the ML topology in selected genera, *rbcLa* helped distinguish infra-generic taxonomic categories, such as subsections, grouping affine species within the same genus, and discriminating species. Since the ML phylogenetic tree could discriminate 48 species out of our 55 studied species, we recommend this approach to resolve tropical montane cloud

Submitted 7 April 2022  
Accepted 1 July 2022  
Published 16 August 2022

Corresponding author  
Rafael F. del Castillo,  
fsanchez@ipn.mx

Academic editor  
Victoria Sosa

Additional Information and  
Declarations can be found on  
page 16

DOI 10.7717/peerj.13771

© Copyright  
2022 Trujillo-Argueta et al.

Distributed under  
Creative Commons CC-BY 4.0

**OPEN ACCESS**

forest species using *rbcLa*, as an initial step and improve DNA amplification methods.

**Subjects** Conservation Biology, Molecular Biology, Plant Science, Taxonomy

**Keywords** Neotropics, Vascular plants, *Quercus*, Solanaceae, Neighbor joining phylogenetic tree, Bayesian inference phylogenetic tree, CBOL, DNA-barcoding, Maximum likelihood phylogenetic tree, GenBank

## INTRODUCTION

A biodiversity inventory is crucial as a first step to protecting species and ecosystems. A significant portion of global biodiversity remains unnamed. Recent estimations indicate that 8.7 million species of multicellular organisms occur on Earth, but about 20% of those species have been described using morphological approaches since 1750 ([Mora et al., 2011](#)). Thus, it is urgent to speed up the species identification process ([Hvistendahl, 2016](#)). In the early 21<sup>st</sup> century a molecular technique DNA barcoding, was proposed to identify species using short-standardized sequences and only requiring a small sample of tissue ([Hebert et al., 2003](#)). Cytochrome oxidase 1 (*CO1*) successfully discriminates against many animal species but does not resolve plant species. The Consortium for the Barcode of Life's (CBOL) plant working group evaluated several plastid DNA regions based on universality, sequence quality, and species discrimination, recommending using a core of a two-locus combination of partial genes *rbcLa* + *matK* as the plant barcode ([CBOL Plant Working Group1 et al., 2009](#)). Such a universality has not been found in all plant groups, and other studies suggest using additional loci ([Kress & Erickson, 2007](#); [Fazekas et al., 2008](#); [China Plant BOL Group et al., 2011](#); [Pang et al., 2012](#)). Moreover, *matK* may work very well for orchid species ([Lahaye et al., 2008](#)) but not for certain fern groups ([Trujillo-Argueta et al., 2021](#)). Furthermore, in some angiosperm genera, such as *Salix* ([Percy et al., 2014](#)) and *Quercus* ([Piredda et al., 2011](#)), plastid markers might not work at all.

On average, the resolution of the tested DNA barcoding markers for plants is not as high as barcode markers used for many animal groups ([Fazekas et al., 2008](#); [CBOL Plant Working Group, 2009](#)). Of the possible plant markers, *rbcLa* appears to be one of the best plant barcodes, because of its successful amplification and sequencing. Although far from perfect, the resolution of *rbcLa* was shown to be better than *matK* when tested both barcodes in wild arid plants in the United Arab Emirates ([Maloukh et al., 2017](#)) and when tested alone, in plants of Saudi Arabia ([Bafeel et al., 2012](#)). Also, *rbcLa* can be a valuable tool to identify species in conditions in which other methods are impractical. For instance, this marker was successfully used for studying root diversity patterns in old-field communities in Ontario, Canada ([Kesanakurti et al., 2011](#)). This kind of research is encouraging, but more studies are needed to explore the resolution potential of this marker for species in ecosystems other than those of temperate regions. The Neotropics are considered the richest region in biodiversity ([Gaston & Williams, 1996](#); [Thomas, 1999](#)). Several barcoding studies have been performed in neotropical animals (e.g., [Hajibabaei et al., 2006](#)). However, barcoding plant studies in this area are scarce. The available studies

are often limited to a few plant groups such as orchids (Lahaye *et al.*, 2008) or ferns (Nitta, 2008; Trujillo-Argueta *et al.*, 2021).

In Mexico, the tropical montane cloud forest (TMCFs) is a top priority ecosystem for conservation due to its high diversity, endemism richness, and anthropogenic threats (Villaseñor, 2010; Toledo-Aceves *et al.*, 2011). Due to the reproductive biology of plants, the universality of DNA barcodes has been difficult to achieve when dealing with several taxa, therefore, some authors suggest to develop a DNA barcode library locally to be used for conservation and ecological studies (Lahaye *et al.*, 2008; De Groot *et al.*, 2011). Our study is part of a long-term project to characterize DNA barcodes of tropical plants of southern Mexico. We choose *rbcLa* as the first marker to study because (1) it is widely used in phylogenetic analyses, (2) it has been helpful for ecological studies (*i.e.*, Kesanakurti *et al.*, 2011), and is one of the markers with more published sequences in public databases. The aim of this study is to evaluate the performance of the plant core DNA barcode *rbcLa*, using universal primers for vascular plants, as a first stage of DNA barcoding analysis in an unexplored tropical montane cloud forest of the Mixteca Baja, Oaxaca, Mexico. We followed the three above-mentioned CBOL criteria and built a barcode library of native plant species for this region. Sequences obtained of these species were submitted to The Barcode of Life Data System (BOLD) and GenBank. BOLD is a bioinformatic workbench devoted to acquiring, storing, analyzing, and publishing DNA barcode records (Ratnasingham & Hebert, 2007).

## MATERIALS AND METHODS

### Description of study site

We conducted the field study in a tropical montane cloud forest at different successional stages in the San Miguel Cuevas, Santiago Juchitahuaca Municipality, Mixteca Baja (17°15'00.96"N, 98°02'57.34", centroid coordinates), which belongs to the Western physiography region of the state of Oaxaca, in southern Mexico (Ortiz-Pérez, Hernández Santana & Figueroa Mah-Eng, 2004). The climate is semi-humid, temperate to semi-warm (1,382 mm and 16.8 °C, mean annual precipitation and temperature, respectively, Fernandez-Eguiarte, Zavala-Hidalgo & Romero-Centeno, 2020), with soils rich in organic matter, steep topography, and a mean altitude of 2,187 m.

### Studied species

We carried out random walks through the forest area and collected one hundred samples of fresh vascular plants, which position was georeferenced with a GPS. In the field, we took digital photographs of each sampled plant and its main structures. The number of samples collected per taxon was one and occasionally two. A small sample of fresh leaf tissue (2–5 g) was also collected from the same specimen, placed in a sealed plastic bag, and kept fresh until stored at –20 °C in a lab freezer. Voucher plants were pressed flat for standard herborization (drying, sanitizing, identification, mounting, labelling, and shelf-storing). The voucher specimens were deposited at the herbarium of CIIDIR Oaxaca, Instituto Politécnico Nacional (OAX), pending for registration numbers due to the pandemic crisis. The species analyzed, and their IUCN Red List Status is shown on Table 1. The municipal

**Table 1** Species of the tropical montane cloud forest of San Miguel Cuevas, Santiago Juxtlahuaca Municipality, Oaxaca, Mexico, used in this study.

Sample ID	Family	Morphological species	IUCN status	bp length	BOLD Process ID	GeneBank Accession No.
SMC7	Rubiaceae	<i>Deppea grandiflora</i> Schltld.	LC	553	TFOAX001-19	ON002500
SMC10	Styracaceae	<i>Styrax glabrescens</i> Benth.	DD	535	TFOAX002-19	ON002540
SMC19	Thymelaeaceae	<i>Daphnopsis selerorum</i> Gilg	LC	535	TFOAX003-19	ON002498
SMC28	Solanaceae	<i>Solanum nigricans</i> M. Martens & Galeotti	LC	553	TFOAX004-19	ON002539
SMC29	Polygalaceae	<i>Monnina xalapensis</i> Kunth	LC	553	TFOAX005-19	ON002512
SMC37	Ericaceae	<i>Comarostaphylis longifolia</i> (Benth.) Klotzsch	DD	540	TFOAX006-19	ON002495
SMC41	Rubiaceae	<i>Deppea grandiflora</i> Schltld.	LC	553	TFOAX007-19	ON002501
SMC61	Euphorbiaceae	<i>Tragia aff. nepetifolia</i> Cav.	DD	541	TFOAX008-19	ON002541
SMC70	Rubiaceae	<i>Hoffmannia longipetiolata</i> Pol.	DD	553	TFOAX009-19	ON002505
SMC75	Olaceae	<i>Osmanthus americanus</i> (L.) Benth. & Hook. f. ex A. Gray	DD	553	TFOAX010-19	ON002521
SMC76	Commelinaceae	<i>Commelina coelestis</i> Willd.	DD	553	TFOAX011-19	ON002497
SMC94	Thymelaeaceae	<i>Daphnopsis tuerckheimiana</i> Donn. Sm.	NT	540	TFOAX012-19	ON002499
SMC97	Rubiaceae	<i>Deppea guerrerensis</i> Dwyer & Lorence	DD	536	TFOAX013-19	ON002502
SMC99	Solanaceae	<i>Physalis philadelphica</i> Lam.	LC	535	TFOAX014-19	ON002525
SMC104	Apocinaceae	<i>Vallesia aurantiaca</i> (M. Martens & Galeotti) J.F. Morales	DD	553	TFOAX015-19	ON002545
AVM2	Betulaceae	<i>Alnus acuminata</i> Kunth	LC	560	DVHTF001-19	ON002486
AVM12	Berberidaceae	<i>Berberis lanceolata</i> Benth.	DD	557	DVHTF002-19	ON002489
AVM13	Araliaceae	<i>Oreopanax sanderianus</i> Hemsl.	VU	557	DVHTF003-19	ON002519
AVM14	Scrophulariaceae	<i>Buddleja cordata</i> Kunth	LC	557	DVHTF004-19	ON002490
AVM15	Convolvulaceae	<i>Ipomoea elongata</i> Choisy	DD	557	DVHTF005-19	ON002506
AVM16	Solanaceae	<i>Solanum hispidum</i> Pers	DD	553	DVHTF006-19	ON002537
AVM17	Solanaceae	<i>Solandra maxima</i> (Sessé & Moc.) P.S. Green	DD	558	DVHTF007-19	ON002536
AVM27	Commelinaceae	<i>Commelina coelestis</i> Willd.	DD	557	DVHTF008-19	ON002496
AVM30	Lycopodeaceae	<i>Lycopodium clavatum</i> L.	LC	560	DVHTF009-19	MZ771330
AVM32	Primulaceae	<i>Myrsine juergensenii</i> (Mez) Ricketson & Pipoly	LC	557	DVHTF010-19	ON002516
AVM33	Ericaceae	<i>Vaccinium leucanthum</i> Schltld.	DD	558	DVHTF011-19	ON002544
AVM34	Fagaceae	<i>Quercus martinezii</i> C.H. Mull.	LC	560	DVHTF012-19	ON002531
AVM35	Fagaceae	<i>Quercus laurina</i> Bonpl.	LC	558	DVHTF013-19	ON002530
AVM36	Melastomataceae	<i>Miconia glaberrima</i> (Schltld.) Naudin	LC	545	DVHTF014-19	ON002511
AVM40	Pteridaceae	<i>Adiantum andicola</i> Liebm.	DD	557	DVHTF015-19	ON002485
AVM43	Rosaceae	<i>Rubus sapidus</i> Schltld.	DD	557	DVHTF016-19	ON002534
AVM45	Araliaceae	<i>Oreopanax xalapensis</i> (Kunth) Decne. & Planch.	LC	556	DVHTF017-19	ON002520
AVM46	Piperaceae	<i>Piper umbellatum</i> L.	DD	557	DVHTF018-19	ON002528
AVM47	Lauraceae	<i>Ocotea helicterifolia</i> (Meisn.) Hemsl.	DD	557	DVHTF019-19	ON002517
AVM48	Fabaceae	<i>Calliandra houstoniana</i> (Mill.) Standl.	LC	558	DVHTF020-19	ON002491
AVM50	Lauraceae	<i>Ocotea helicterifolia</i> (Meisn.) Hemsl.	DD	553	DVHTF021-20	ON002518
AVM52	Primulaceae	<i>Parathesis donnell-smithii</i> Mez	LC	553	DVHTF022-20	ON002522
AVM53	Fagaceae	<i>Quercus calophylla</i> Schltld. & Cham.	LC	553	DVHTF023-20	ON002529
AVM54	Euphorbiaceae	<i>Cnidioscolus aconitifolius</i> (Mill.) I.M. Johnst.	LC	553	DVHTF024-20	ON002494
AVM59	Amaranthaceae	<i>Iresine diffusa</i> Humb. & Bonpl. ex Willd.	DD	553	DVHTF025-20	ON002507

Table 1 (continued)

Sample ID	Family	Morphological species	IUCN status	bp length	BOLD Process ID	GeneBank Accession No.
AVM62	Solanaceae	<i>Solanum nigricans</i> M. Martens & Galeotti	LC	553	DVHTF026-20	ON002538
AVM64	Rubiaceae	<i>Arachnothryx buddleioides</i> (Benth.) Planch.	LC	553	DVHTF027-20	ON002488
AVM65	Passifloraceae	<i>Passiflora quadraticordata</i> Lozada-Pérez	DD	553	DVHTF028-20	ON002524
AVM67	Urticaceae	<i>Urera killipiana</i> Standl. & Steyerl.	LC	553	DVHTF029-20	ON002543
AVM69	Rubiaceae	<i>Hoffmannia longipetiolata</i> Pol.	DD	553	DVHTF030-20	ON002504
AVM71	Gesneriaceae	<i>Moussonia deppeana</i> (Schltdl. & Cham.) Hanst.	DD	553	DVHTF031-20	ON002515
AVM73	Pinaceae	<i>Pinus montezumae</i> Lamb.	LC	553	DVHTF032-20	ON002526
AVM78	Dicksoniaceae	<i>Lophosoria quadripinnata</i> (J.F. Gmel.) C. Chr.	DD	553	DVHTF033-20	ON002509
AVM79	Passifloraceae	<i>Passiflora quadraticordata</i> Lozada-Pérez	DD	553	DVHTF034-20	ON002523
AVM80	Cyperaceae	<i>Rhynchospora aristata</i> Boeck.	DD	553	DVHTF035-20	ON002532
AVM82	Marattiaceae	<i>Marattia weinmanniifolia</i> Liebm.	DD	553	DVHTF036-20	ON002510
AVM83	Cupressaceae	<i>Juniperus flaccida</i> Schltdl.	LC	553	DVHTF037-20	ON002508
AVM84	Pinaceae	<i>Pinus pseudostrobus</i> Lindl.	LC	553	DVHTF038-20	ON002527
AVM87	Asteraceae	<i>Montanoa tomentosa</i> Cerv.	DD	553	DVHTF039-20	ON002513
AVM89	Meliaceae	<i>Guarea glabra</i> Vahl	LC	553	DVHTF040-20	ON002503
AVM90	Meliaceae	<i>Trichilia havanensis</i> Jacq.	LC	553	DVHTF041-20	ON002542
AVM93	Rubiaceae	<i>Arachnothryx buddleioides</i> (Benth.) Planch.	LC	553	DVHTF042-20	ON002487
AVM95	Gesneriaceae	<i>Moussonia deppeana</i> (Schltdl. & Cham.) Hanst.	DD	553	DVHTF043-20	ON002514
AVM98	Solanaceae	<i>Cestrum commune</i> C.V. Morton ex Mont.-Castro	DD	553	DVHTF044-20	ON002492
AVM100	Poaceae	<i>Zeugites hintonii</i> Hartley	DD	553	DVHTF045-20	ON002546
AVM101	Asteraceae	<i>Roldana angulifolia</i> (DC.) H. Rob. & Brettell	DD	553	DVHTF046-20	ON002533
AVM103	Verbenaceae	<i>Citharexylum hexangulare</i> Greenm.	DD	474	DVHTF047-20	ON002493
AVM106	Lamiaceae	<i>Salvia clarkowanii</i> B.L. Turner	DD	553	DVHTF048-20	ON002535

**Notes:**

The IUCN Red List (2021) status, DNA length obtained with *rbcLa* barcode, BOLD Process ID, and GenBank Accession numbers are also shown. LC, Least Concern; DD, Data Deficit; NT, Near Threatened; VU, Vulnerable.

councils of San Miguel Cuevas granted permission to conduct our field studies on their lands. Two commissioners of the communal property, Mr. Pedro Gil (2017–July 2018) and Mr. Damián Domínguez (July 2018 to June 2019) were directly responsible for such permissions. During the field trips, Mr. Heladio Luna Rodríguez, a member of The San Miguel Cuevas Community local authority, supervised, guided, and helped us throughout the sampling process. In no case was the entire plant collected; collecting the samples did not kill the plants, which were left alive in their original places. Based on The International Union for Conservation of Nature (IUCN) Red List (accessed December 19th, 2021) from all 55 species in this study, more than half 52.73% (29/55) were not previously registered (Data Deficit DD), 43.64% (24/55) belong to the Least Concern (LC) category and 3.64% (2/55) hold some type of concern; *Daphnopsis tuerckheimiana* the status of Near Threatened (NT) and *Oreopanax sanderianus* of Vulnerable species (VU).

Fresh plant vouchers were first identified to family level and then determined by the following specialists to species level: Daniel Tejero-Díez, UNAM FES Iztacala, México, lycopod and ferns; Sergio Zamudio, Institute of Ecology, Veracruz, México, Berberidaceae;



Rafael F. del Castillo, IPN CIIDIR Oaxaca, México, Pinaceae; Jesús Guadalupe González Gallegos, University of Guadalajara, México, Lamiaceae; Socorro González Elizondo, IPN CIIDIR Durango, México, Cyperaceae and Ericaceae; Susana Valencia Avalos, UNAM Facultad de Ciencias, México, Fagaceae; J.R. Kuethe, University of Auckland, New Zealand, Passifloraceae; and Rufina García, IPN CIIDIR Oaxaca, México, the rest of the families.

### DNA amplification and sequencing

Genomic DNA was extracted from 2 mg leaf tissue with FastDNA SPIN kit and FastPrep® (MP Biomedicals, Santa Ana, CA, USA) equipment. DNA concentration (ng/μl) and purity (260/280 A) from the genomic DNA extracted were measured with a Biophotometer (Eppendorf®). Plant core barcoding partial gene *rbcLa* (670 bp) was used for amplification. We used standard primers from the Canadian Center for DNA Barcoding (CCDB) ([Kuzmina, 2011](#)), *rbcLa*-F ATGTCACCACAAACAGAGACTAAAGC ([Tate & Simpson, 2003](#)) and *rbcLa*-R GTAAAATCAAGTCCACCRG ([Kress & Erickson, 2007](#)). *rbcLa* was amplified using a 25 μL volume of reaction mixture: 15.8 μL of nuclease-free water, 5 μL MyTaq Buffer reaction (kit MyTaqDNA Polymerase Bioline), 1 μL of forward primer, 1 μL of reverse primer, 0.2 μL of MyTaq Polymerase and 2 μL of isolated genomic DNA template (39± ng/μL mean concentration ±5.13 EE). PCR reaction was carried out using an Applied Biosystems Veriti® thermocycler. We followed [Fazekas et al. \(2012\)](#) protocols for *rbcLa* amplification. The PCR temperature cycling program was: 94 °C for 4 min; 35 cycles of 94 °C for 30 s, 55 °C for 30 s, 72 °C for 1 min; final extension of 72 °C during 10 min. *rbcLa* gene length is 1,428 bp, but barcode method uses only 670 bp of this gene, known as *rbcLa* ([Dong et al., 2014](#)). Amplified PCR products were detected using agarose gel electrophoresis (1.2% agarose gel TBE) under UV light by staining with GelRed Nucleic Acid (Biotium, Fremont, CA, USA). PCR products were purified using the EZ-10 Spin Column PCR Products Purification Kit (Biobasic, Markham, Canada). All PCR products were sequenced by Capillary Electrophoresis Sequencing (CES) in an ABI 3130xl Genetic Analyser at the Laboratorio Bioquímica Molecular UBIPRO FES Iztacala UNAM, or with an AB3730 at the Laboratorio de Servicios Genómicos LANGEBIO-CINVESTAV, Mexico.

### DNA alignment

*rbcLa* sequence chromatograms were assembled into contigs using CodonCode Aligner v.9.0.1 <http://www.codoncode.com/aligner>, and the resulting nucleotide sequences were manually edited. Consensus sequences were generated and aligned using MUSCLE ([Edgar, 2004](#)). These alignments were examined by eye and corrected in case of base ambiguity.

### BOLD and genebank

Three files were included in the metadata submitted to BOLD: (1) Specimen data file including detailed voucher information, scientific names of the taxa sampled, collection dates, geographical coordinates, elevation, collectors, identifiers, and habitat. (2) An image file was submitted with high-quality specimen images from each plant. (3) A trace file was

submitted along with primers and the direction of sequences. DNA sequences, edited, aligned, using CodonCode software, and in FASTA format, were uploaded to BOLD and referenced by Sample IDs. Metadata and DNA sequences submitted to BOLD were registered under project name “Diversity of a humid temperate forest in Oaxaca, Mexico” project code DVHTF (<http://www.boldsystems.org>). DNA sequences were also submitted to the GenBank.

## Species differentiation

We used three strategies to evaluate species discrimination:

(a) The Basic Local Alignment Search Tool for nucleotide (BLASTn) method ([Altschul et al., 1990](#)). This tool compares the query sequence against the GenBank sequence database available online by the National Center for Biotechnology Information (NCBI) <https://www.ncbi.nlm.nih.gov>. Identification at the genus level was considered successful when all hits with the maximum percent identity scores >99% involved a single genus. Species identification was considered successful only when the highest maximal percent identity included a single species and scored >99% ([Bafeel et al., 2012](#); [Abdullah, 2017](#)).

(b) Genetic divergence. Interspecific and intraspecific distances were obtained in MEGAX ([Kumar et al., 2018](#)). Genetic distance was inferred from 1,000 replicates, and the evolutionary distances were computed using the Kimura two-parameter method with gaps/missing data treatment adjusted using pairwise deletion. The K2P genetic distances percentages of families, genera, and species were analyzed in the Barcode of Life Data Systems (BOLD, [www.boldsystems.org](http://www.boldsystems.org)) ([Ratnasingham & Hebert, 2007](#)).

(c) Monophyly tree-based analyses using Neighbor-Joining (NJ), Maximum Likelihood (ML), and Bayesian Inference (BI) analysis.

NJ trees were constructed using MEGAX ([Kumar et al., 2018](#)) inferred from 1,000 replicates, and the evolutionary distances were computed using the Kimura two-parameter method with gaps/missing data treatment adjusted using pairwise deletion. Following [Braukmann et al. \(2017\)](#), we used all species but duplicates to avoid bias created by an unequal number of sequences per species. ML analyses were run on the IQ-TREE web server (<http://iqtree.cibiv.univie.ac.at>) with settings of automatic substitution model and ultrafast bootstrap analysis. Internal node support was calculated using 1,000 bootstrap replicates. Tree inference using Bayesian analysis was run on MrBayes 3.2.2 on XSEDE via the CIPRES supercomputer cluster ([www.phylo.org](http://www.phylo.org)) with two runs, MrBayes block of four chains, 2 h maximum time to run, and the nucleic acid selection settings for this web server. The resultant ML and BI trees were visualized in the interactive Tree of Life (iTOL) ([Letunic & Bork, 2019](#)). We evaluated which of the tree-based methods (NJ, ML, and MB) recovered more monophyletic species with a bootstrap/posterior probabilities support of >70% ([De Groot et al., 2011](#)).

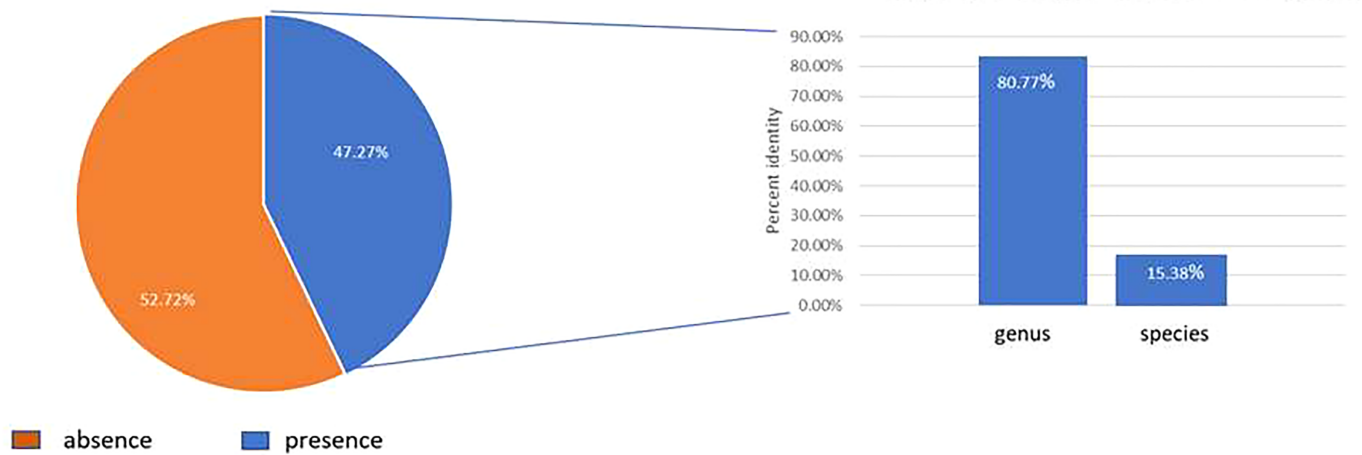
## RESULTS

### Studied taxa with DNA amplification and sequencing success

We could successfully amplify 69% (69/100) of the botanical samples collected and obtain high-quality bidirectional sequences (>250 bp) in 91.3% (63/69) of the samples collected,

Presence/absence of DNA sequences this study in GenBank

N= 55 species



**Figure 1** Graphic BLAST results. Fraction of the new *rbcL* sequences published in the GenBank (left), and resolution at genus and species levels for those species with previous available sequences released in the GenBank (accessed in March 2022) using BLASTn (right).

Full-size DOI: [10.7717/peerj.13771/fig-1](https://doi.org/10.7717/peerj.13771/fig-1)

using the standard primers of the CCDB for *rbcLa*. The total number of specimens with high-quality bidirectional sequences includes 55 species, of which 29.1% (16/55) were herbs, and 70.9% (39/55) were woody plants (trees and shrubs). These species belong to 38 families and 48 genera. Twenty-seven families include one species, and 11 families include two to five species (Table 1).

## BLAST

Only 47.3% (26/55) of our studied species had a previous *rbcLa* sequence register in the GenBank database (Fig. 1). We contributed in this study with 13 new species in the GenBank Taxonomy Database (*Daphnopsis selerorum*, *Solanum nigricans*, *Comarostaphylis longifolia*, *Daphnopsis tuerckheimiana*, *Deppea guerrerensis*, *Vallesia aurantiaca*, *Myrsine juergensenii*, *Quercus martinezii*, *Miconia glaberrima*, *Passiflora quadraticordata*, *Cestrum commune*, *Zeugites hintonii* and *Salvia clarckowanii*), since none of this species had a previous register with *rbcLa* nor with any other gene sequence. Using previously published records in the GenBank of *rbcLa* sequence for our species (26) and BLASTn, we got 100% resolution in all the families, 80.77% (21/26) in the genera, and only 15.38% (4/26) at the species level (Fig. 1). Just four species, *Monnina xalapensis*, *Cnidocolus aconitifolius*, *Iresine diffusa*, and *Lophosoria quadripinnata*, displayed the highest score BLAST match to a single species with more than 99% identity. Most of our *rbcLa* sequences matched from 2–12 species with  $\geq 99\%$  maximal percent identity; and seven species, *Alnus acuminata*, *Solanum hispidum*, *Quercus laurina*, *Quercus callophylla*, *Pinus montezumae*, *Osmanthus americanus*, and *Physalis phyladelphica*, matched the *rbcLa* sequences in the GenBank with >30 different species. The highest score BLAST match for our species are shown in Table 2.



**Table 2** BLAST results.

Sample ID	Morphological species	Identity (%)	Best BLAST match	Accession no.
AVM2	<i>Alnus acuminata</i>	100	Δ <i>Alnus nepalensis</i>	NC_039991.1
SMC7	<i>Deppea grandiflora</i>	99.46	○ <i>Cosmibuena grandiflora</i>	AM117220.1
AVM12	<i>Berberis lanceolata</i>	99.82	○ <i>Berberis thunbergii</i>	KX162895.1
AVM16	<i>Solanum hispidum</i>	100	○ <i>Solanum torvum</i>	MN218087.1
SMC29	<i>Monnina xalapensis</i>	<b>100</b>	<b><i>Monnina xalapensis</i></b>	AM234184.1
AVM30	<i>Lycopodium clavatum</i>	100	○ <i>Lycopodium clavatum</i>	KF977478.1
AVM35	<i>Quercus laurina</i>	100	Δ <i>Quercus phillyraeoides</i>	NC_048488.1
AVM40	<i>Adiantum andicola</i>	99.82	○ <i>Adiantum feei</i>	MH019567.1
AVM46	<i>Piper umbellatum</i>	100	○ <i>Piper umbellatum</i>	KF496838.1
AVM52	<i>Parathesis donnell-smithii</i>	100	○ <i>Stylogyne longifolia</i>	MF786262.1
AVM53	<i>Quercus callophylla</i>	100	Δ <i>Quercus phillyraeoides</i>	NC_048488.1
AVM54	<i>Cnidioscolus aconitifolius</i>	<b>100</b>	<b><i>Cnidioscolus aconitifolius</i></b>	MZ045411.1
AVM59	<i>Iresine diffusa</i>	<b>100</b>	<b><i>Iresine diffusa</i></b>	JQ590112.1
AVM64	<i>Arachnothryx buddleioides</i>	100	○ <i>Arachnothryx monteverdensis</i>	JQ594656.1
AVM70	<i>Hoffmannia longipetiolata</i>	99.64	○ <i>Omiltemia filisepala</i>	AM117251.1
AVM73	<i>Pinus montezumae</i>	100	Δ <i>Pinus arizonica</i>	KC156714.1
SMC75	<i>Osmanthus americanus</i>	99.81	Δ <i>Osmanthus americanus</i>	NC_048503.1
AVM78	<i>Lophosoria quadripinnata</i>	<b>99.64</b>	<b><i>Lophosoria quadripinnata</i></b>	MW138175.1
AVM80	<i>Rhynchospora aristata</i>	99.82	○ <i>Rhynchospora sp</i>	JQ594519.1
AVM82	<i>Marattia weinmanniifolia</i>	100	○ <i>Marattia douglasii</i>	MT657852.1
AVM83	<i>Juniperus flaccida</i>	100	○ <i>Juniperus flaccida</i>	HM024304.1
AVM84	<i>Pinus pseudostrobus</i>	100	○ <i>Pinus flexilis</i>	MG215114.1
AVM87	<i>Montanoa tomentosa</i>	100	○ <i>Montanoa tomentosa</i>	MT189234.1
AVM89	<i>Guarea glabra</i>	100	○ <i>Ruagea pubescens</i>	MN454793.1
AVM90	<i>Trichilia havanensis</i>	99.82	Meliaceae* sp.	EU042974.1
SMC99	<i>Physalis philadelphica</i>	100	Δ <i>Physalis minima</i>	NC_048515.1

**Notes:**

Best BLASTn match found on queries against *rbcLa* nucleotides sequences in the database of GenBank for those species with previously published sequences in the GenBank. E- value, in all cases 0.0.

In bold morphological species corresponding with only the studied species in GenBank database.

○ >2-<30 species with the same highest percent of identity.

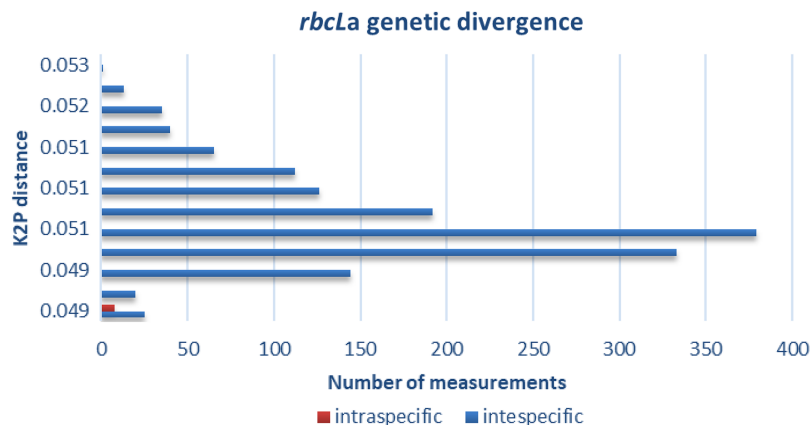
Δ >30 species with the same highest identity percent.

\* *T. havanensis* showed the best match with another unidentified species of the Meliaceae in the GenBank published sequence.

A specimen data file, image file, and trace file(s) were submitted to BOLD along with edited and aligned sequences for each of our 63 botanical samples (55 species and eight different duplicates) and can be accessed through the BOLD DNA database (<http://www.boldsystems.org>) under the 'DVHTF' project. Sixty-three new sequences generated by this study for *rbcLa* with their BOLD Process ID, and GenBank Accession numbers, are shown on Table 1.

### Genetic divergence

The distribution of intra- and interspecific K2P distances across all taxon pairs of our 55 species of plants of The Mixteca Baja, Oaxaca, tropical montane cloud forest, obtained



**Figure 2 Genetic divergence.** Intra- and interspecific genetic distances obtained with barcode *rbclA* in 55 plant species of tropical montane cloud forest in the Mixteca Alta, Oaxaca, Mexico.

Full-size DOI: [10.7717/peerj.13771/fig-2](https://doi.org/10.7717/peerj.13771/fig-2)

**Table 3 Intergeneric *rbclA* genetic distances of the tropical montane cloud forest species.**

Genus	Species comparison	Genetic divergence
<i>Daphnopsis</i>	<i>Daphnopsis tuerckheimiana</i> TFOAX012-19 <i>Daphnopsis selerorum</i> TFOAX003-19	0.0000
<i>Deppea</i>	<i>Deppea guerrerensis</i> TFOAX013-19 <i>Deppea grandiflora</i> TFOAX001-19	1.5076
<i>Deppea</i>	<i>Deppea guerrerensis</i> TFOAX013-19 <i>Deppea grandiflora</i> TFOAX007-19	1.5076
<i>Oreopanax</i>	<i>Oreopanax xalapensis</i> DVHTF017-19 <i>Oreopanax sanderianus</i> DVHTF003-19	0.0000
<i>Pinus</i>	<i>Pinus pseudostrobus</i> DVHTF038-20 <i>Pinus montezumae</i> DVHTF032-20	2.0189
<i>Quercus</i>	<i>Quercus laurina</i> DVHTF013-19 <i>Quercus martinezii</i> DVHTF012-19	0.0000
<i>Quercus</i>	<i>Quercus callophylla</i> DVHTF023-20 <i>Quercus martinezii</i> DVHTF012-19	0.0000
<i>Quercus</i>	<i>Quercus callophylla</i> DVHTF023-20 <i>Quercus laurina</i> DVHTF013-19	0.0000
<i>Solanum</i>	<i>Solanum hispidum</i> DVHTF006-19 <i>Solanum nigricans</i> TFOAX004-19	0.7269
<i>Solanum</i>	<i>Solanum nigricans</i> DVHTF026-20 <i>Solanum hispidum</i> DVHTF006-19	0.7269

**Note:**

Intergeneric *rbclA* genetic distances of the tropical montane cloud forest species in the Mixteca Baja, Oaxaca, Mexico, found in multi-species genera. The Bold Process ID is below the scientific names.

from partial gen *rbclA* are shown in Fig. 2. Mean pairwise genetic distance within species was 0 (*i.e.*, identical for the tested sequences), within genus  $0.65 + 0.07$ , and  $1.76 + 0.03$  within families. Congeneric species of *Quercus*, *Daphnopsis*, and *Oreopanax* did not show genetic divergence. Contrastingly, *Solanum*, *Deppea*, and *Pinus* displayed intergeneric differences (Table 3).

**Table 4** Mean *rbcLa* intergeneric and interspecific genetic distances.

Family	No. Genera	No. Species	Mean divergence (%)
Asteraceae	2	2	3.3344
Ericaceae	2	2	5.5723
Euphorbiaceae	2	2	4.5869
Meliaceae	2	2	0.7286
Primulaceae	2	2	1.2784
Rubiaceae	3	4	1.6207
Solanaceae	4	5	1.6558

**Note:**

Mean *rbcLa* intergeneric and interspecific genetic distances in the multigenera and multispecies families of this study.

The mean genetic divergence observed in the studied families with two or more genera is shown in Table 4. The highest mean divergence values were observed in the Ericaceae, Euphorbiaceae, and Asteraceae families.

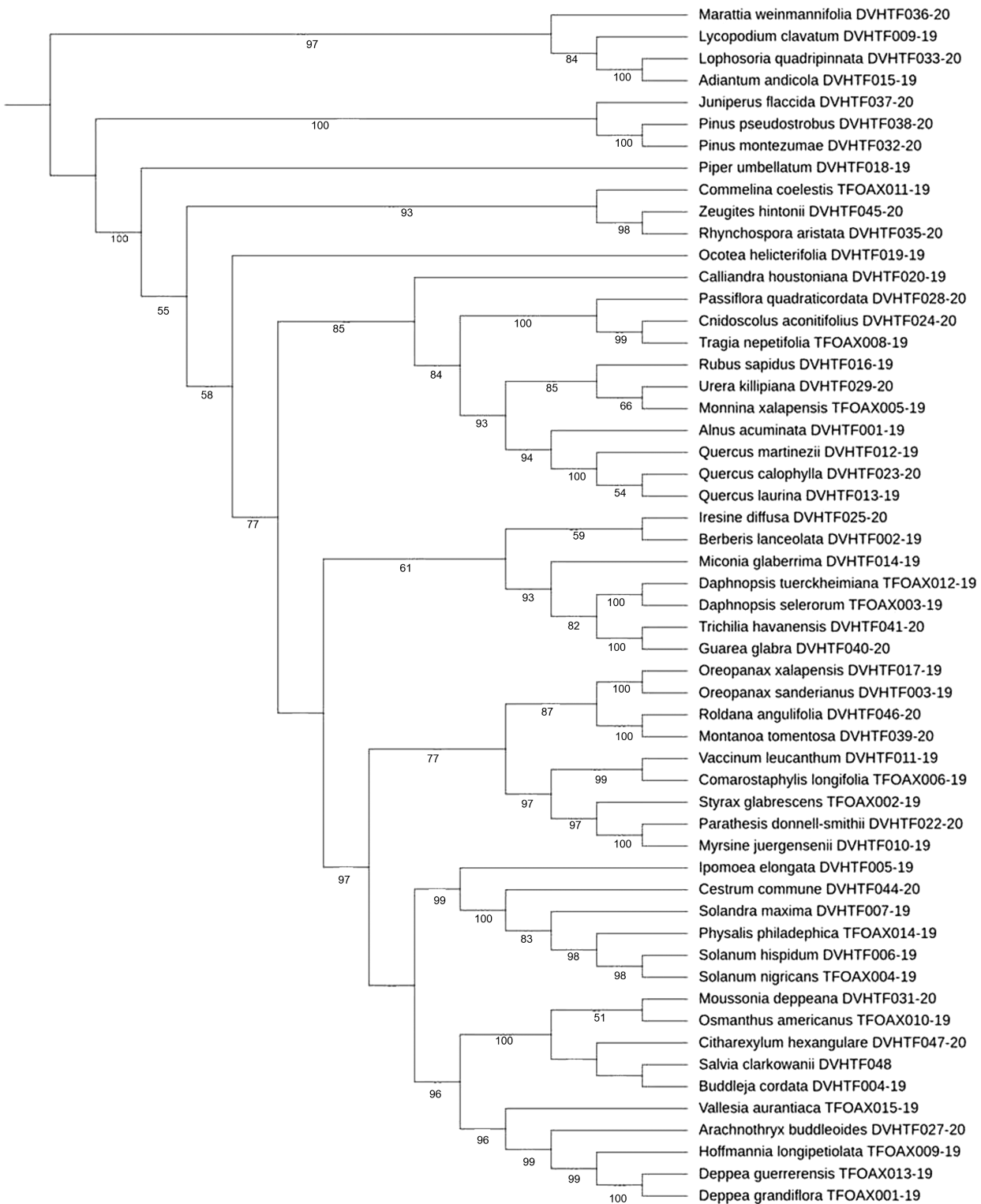
### Monophyly tree-based analyses

Phylogenetic tree-based analysis using Neighbor-Joining (Fig. S1), Maximum Likelihood (Fig. 3), and Bayesian Inference tree (Fig. S2) were reconstructed to evaluate our 55 species discrimination using the *rbcLa* barcode region. In all cases, we used ferns and a lycopodium as outgroups. These tree-based methods evaluated which tree rendered the greatest species resolution and whether the barcode sequences generated monophyletic species (Table 5). NJ and ML phylogenetic trees resolved 100% of monophyletic species using *rbcLa*. Nevertheless, the clade support value >70% with a bootstrap of 1,000 replicates yielded the most robust phylogeny in the ML tree (87.3%, 48/55) than the one obtained in the NJ tree (70.9%, 39/55). Therefore, we present the ML phylogenetic tree (Fig. 3). Although the BI tree showed the highest clade support value (92.7%, 51/55), this tree did not resolve all 55 species as monophyletic species; one polytomy was observed in the *Quercus* clade and another in the Solanaceae clade (Fig. S2).

## DISCUSSION

Our study reveals the advantages and limitations of the *rbcLa* barcode region for species identification of vascular plant species of a neotropical montane cloud forest. First, the amplification was not universal, since near 30% of our samples did not amplify. However, bi-directional sequencing was highly successful from those samples that we could amplify. Using BLAST as an identification tool for genus level is convenient as it proved accurate in most cases. However, this was not usually the case for many of the studied species. Finally, in selected genera, this marker helped distinguish infra-generic taxonomic categories, such as subsections, and helps to group affine species within the same genus. Below, we discuss in detail these issues.

Multiple factors can cause the absence of DNA amplification in some samples. Since we could amplify *rbcLa* in several species, the possibilities of methodological failures or problems with the reactants or the lab equipment used are unlikely. One possible cause of



**Figure 3 ML cladogram.** Maximum likelihood cladogram of plant core barcoding gene *rbcLa* for 55 sequences of plants from of Mixteca Baja, Oaxaca, México, tropical montane cloud forest. Bootstrap values based on 1,000 replications are listed as percentages at branching points.

Full-size DOI: 10.7717/peerj.13771/fig-3

**Table 5** Proportion of resolved monophyletic species and support value obtained (bootstrap/posterior probabilities) with different phylogenetic techniques.

	Neighbor joining tree	Maximum likelihood tree	Bayesian inference tree
Percent of monophyletic species resolved	100.00	100.00	85.45
Percent species resolved with support value >70%	70.91	87.27	92.73

**Note:**

Proportion of resolved monophyletic species and support value obtained (bootstrap/posterior probabilities) with different phylogenetic techniques using plant core barcoding gene *rbcLa* in 55 studied species of the tropical montane cloud forest, Mixteca Baja, Mexico.

the amplification failure is DNA degradation in some samples, as those were collected in the field and brought to the lab. During this time, the tissues may become degraded in some species. This appears to be a plausible explanation for cases in which DNA from tissue samples was successfully amplified in one individual but not in another of the same species. This is the case of *Solanum nigricans* (this study) and *Dryopteris wallichiana*, which could not be amplified in this study but were successfully amplified in a previous study using samples from different plants (Trujillo-Argueta et al., 2021). Another possibility is that the pair of *rbcLa* universal primers used may not work for certain species. Our *rbcLa* amplification success (69%) could be increased using the alternative set of universal primers proposed by CCDB for gene barcode *rbcL*.

Our sequencing success (91.30%) was high and similar to those reported in other works. In a study of root diversity patterns using plastid gene *rbcLa*, Kesanakurti et al. (2011) registered 96% amplification success with 85% sequencing success. In another study that identified Sicily's most threatened plant taxa, the amplification and sequencing successes were 96% and 95%, respectively (Giovino et al., 2016). In a study of the temperate flora of Canada, the use of *rbcLa* gave a 91.4% sequencing success (Burgess et al., 2011).

Our BLAST results were higher for genus discrimination (80.77%) than the values obtained for species differentiation (15.38%). Results from other regions and species are variable. For example, in wild, arid plants, discrimination at genus and species levels were lower than ours: 50% and 8%, respectively (Bafeel et al., 2012), but higher in a comprehensive study of the local flora of Canada (91% and 44%, Braukmann et al., 2017). In a study of threatened species of Sicily, the discrimination at the genus level was lower (52%) but higher at the species level (48%) than our results (Giovino et al., 2016).

The peculiarities of the biology of the studied species may also account for the observed discrimination variability. Part of our low percent species discrimination results using BLASTn can be explained by low marker resolution, as was noticed in those species that matched their *rbcLa* sequence with more than 30 different species in the GenBank database (*Alnus acuminata*, *Solanum hispidum*, *Quercus laurina*, *Quercus callophylla*, *Pinus montezumae*, *Osmanthus americanus* and *Physalis phyladelphica*). Another explanation is misidentified voucher specimens in public DNA databases, an issue that several authors have acknowledged (e.g., Burgess et al., 2011; Abdullah, 2017). Since it is customarily to describe species based on morphological characteristics, it is possible that hybridization and polyploidy, which are common in plants, may contribute to decreasing barcoding



species discrimination (Fazekas *et al.*, 2008; Hollingsworth, 2011). Since more than half of the species in this study (52.72%) lacked comparative data in the GenBank database, it is necessary to increase the DNA barcode database, particularly for tropical wild plant species. Indeed, we contributed to new 63 *rbcLa* sequences to BOLD, its metadata, and the GenBank database. Although 42 of our species already had a *rbcLa* sequence on the GenBank database, new records on these species might help discover new haplotypes or geographical variants (Hajibabaei *et al.*, 2007). Even if *rbcLa* does not have high species discrimination, it does for genus discrimination, which for some ecological studies might be enough (e.g., Kesanakurti *et al.*, 2011).

Our distribution of intra- and interspecific genetic divergence (Fig. 2) agrees with the premise that a DNA barcode must exhibit high interspecific but low intraspecific divergence (Lahaye *et al.*, 2008). The percent interspecific divergence of this study (0.65) is similar to those reported in other hotspot diversity areas such as the Mediterranean Basin (0.89) (Giovino *et al.*, 2016) and Southern Africa (0.82) (Lahaye *et al.*, 2008). The lack of genetic divergence observed in the three genera of trees: *Quercus* (*Q. martinezii*, *Q. laurina*, and *Q. callophylla*); *Oreopanax* (*O. sanderianus* and *O. xalapensis*), and *Daphnopsis* (*D. selerorum* and *D. tuerckheimiana*) concurs with Smith & Donoghue (2008). These authors found that the rates of molecular evolution are low in woody plants with long generation times compared to herbs. In the case of oaks (*Quercus*), several attempts have been made to identify species in Italy, using different plastid barcodes without success since hybridization and polyploidy are expected to be high in this group (Piredda *et al.*, 2011). Null genetic divergence obtained in *Oreopanax* and *Daphnopsis* (Table 3) is of concern since *Oreopanax sanderianus* and *Daphnopsis tuerckheimiana* are on the red list of IUCN. The highest values of genetic distance found in the Ericaceae (5.57%), Euphorbiaceae (4.59%), and Asteraceae (3.3%) families that hold many herbs and shrubs species agree with the assumption that the *rbcLa* barcode has a better species differentiation for non-tree species. Moreover, a study conducted in a subalpine forest in Southwest China found a better DNA barcode resolution for herbs than for tree species (Tan *et al.*, 2018). However, more studies are needed to confirm this trend in other species and localities.

The phylogenetic arrangements found in our study using barcode *rbcLa* concur with the recent Angiosperm Phylogeny Group classification (APG IV) of flowering plants (The Catalogue of Life Partnership, 2017). The percent monophyletic species resolution obtained in this study using NJ (100%), ML (100%), and BI (85.45%) phylogenetic trees, was higher compared to 17% of species resolution found in arid wild plants using ML trees (Bafeel *et al.*, 2012), barcoding the biodiversity of Kuwait (58%) using NJ trees (Abdullah, 2017) and the 71.8% registered in two biodiversity hotspots of Mesoamerica and Southern Africa, using ML and BI trees (Lahaye *et al.*, 2008). Our ML phylogenetic tree showed the most robust phylogeny (87.27%), *Ocotea helicterifolia*, *Quercus callophylla*, *Quercus laurina*, *Iresine difussa*, *Berberis lanceolata*, *Moussonia deppeana*, and *Osmanthus americanus*, could not be resolved as monophyletic species with a clade bootstrap support value >70%.

Most of these species are trees in agreement with the assumption that rates of molecular evolution are low in woody plants compared to herbs (Smith & Donoghue, 2008). For those

species that could not be differentiated with the ML tree, we suggest the addition of a second barcode.

Species discrimination can be improved by using tree-based phylogenetic methods rather than BLAST analysis and genetic distance approaches. For instance, using NJ and ML phylogenetic trees, it was possible to differentiate *Quercus martinezii* from *Q. laurina* and *Q. callophylla* (Fig. S1, Fig. 3) despite the null genetic divergence observed in *Quercus* using BLAST. Based on an updated infrageneric classification of the oaks (Denk et al., 2017), *Q. martinezii* belongs to the white oaks (subsection *Quercus*), while *Q. callophylla* and *Q. laurina* belong to the red oaks (subsection *Lobatae*). In the Solanaceae family, three out of the five studied species (*Physalis philadelphica*, *Solanum hispidum*, and *Solanandra maxima*) share high similitude with at least 30 species using the best BLAST match results. Furthermore, using our best BI tree, we observed a polytomy in the *Solanaceae* clade (Fig. S2), and a low discrimination value in the NJ tree. However, these species could be resolved with our ML phylogenetic tree. Taxonomic species are usually described based on morphological characteristics that can easily be altered by local adaptation, phenotypic plasticity, or neutral morphological polymorphism, which may cause a single variable species to be classified as many species (e.g., Gemeinholzer & Bachmann, 2005). On the other hand, very recent divergence and little differentiation might contribute to the inability of barcoding to separate species in some cases (Birch et al., 2017).

## CONCLUSIONS

DNA barcoding using *rbcLa* can be a promising identification tool primarily at the family and genus level for vascular plant species of the neotropical montane cloud forest. We identify three major problems with the use of this technique. First, the lack of a universal amplification capability is probably associated with DNA degradation in some cases, but without ruling out other factors requiring further study. Second, the inability to detect certain morphological species is probably not related to *rbcLa* itself but to biological (e.g., polyploidy and hybridization) and technical (misidentifications or taxonomic misclassifications) problems. Third, the few available registers in the BOLD and GenBank databases (more than half of our species, 52.72%, did not have previous *rbcLa* sequence records). Indeed, we contributed new 13 species to the GenBank Taxonomy Database and 63 new sequences for *rbcLa* in BOLD and GenBank. We found preliminary evidence suggesting that the ability of the marker to discriminate species is not randomly distributed among taxa. Herb and shrub species in the Asteraceae, Ericaceae and Euphorbiaceae families showed the highest genetic distance using *rbcLa*, which can be helpful to distinguish congeneric species. Contrastingly, we detected nil genetic divergence among congeneric species in long-lived tree genera, *Quercus*, *Oreopanax*, and *Daphnopsis*. Nonetheless, the accuracy for discriminating species can be substantially improved using tree-based analysis. While BLAST and genetic distance approaches could not differentiate *Quercus* species, NJ and ML could successfully separate white oaks (*Quercus martinezii*) from red oaks (*Q. callophylla* and *Q. laurina*). Also, most species in the Solanaceae family that showed unsuccessful BLAST results and low genetic distance could be discriminated

against with ML phylogenetic tree. The ML phylogenetic tree showed the most robust phylogeny (87.27%) of all our 55 studied species of the tropical montane cloud forest of San Miguel Cuevas in Oaxaca state, Mexico. The establishment of this local barcode database will be valuable for a broad range of potential ecological, conservational, and phylogenetic applications.

## ACKNOWLEDGEMENTS

Raúl Rivera García and Heladio Luna, assisted in field work.

## ADDITIONAL INFORMATION AND DECLARATIONS

### Funding

Funding was provided by Instituto Politécnico Nacional (Grant Nos. 20171792, 20180889, 20195601, 20201673 and 20211341). The funders had no role in study design, data collection and analysis, decision to publish, or preparation of the manuscript.

### Grant Disclosures

The following grant information was disclosed by the authors:

Instituto Politécnico Nacional: 20171792, 20180889, 20195601, 20201673 and 20211341.

### Competing Interests

The authors declare that they have no competing interests.

### Author Contributions

- Sonia Trujillo-Argueta conceived and designed the experiments, performed the experiments, analyzed the data, prepared figures and/or tables, authored or reviewed drafts of the article, and approved the final draft.
- Rafael F. del Castillo conceived and designed the experiments, analyzed the data, authored or reviewed drafts of the article, and approved the final draft.
- Abril Velasco-Murguía analyzed the data, authored or reviewed drafts of the article, and approved the final draft.

### Field Study Permissions

The following information was supplied relating to field study approvals (*i.e.*, approving body and any reference numbers):

The community local authorities of San Miguel Cuevas Municipality granted verbal permission to work in their lands. Two commissioners of communal property, Mr. Pedro Gil (2017-July 2018) and Mr. Damián Domínguez (July 2018 to June 2019) were directly responsible for such permissions.

### DNA Deposition

The following information was supplied regarding the deposition of DNA sequences:

The sequences are available at GenBank: [MZ771330](#), [ON002485–ON002546](#).

## Data Availability

The following information was supplied regarding data availability:

The metadata and DNA sequences are available at BOLD registered under project name Diversity of a humid temperate forest in Oaxaca, Mexico (project code DVHTF; <http://www.boldsystems.org>).

The DNA sequences are available at GenBank and the raw data are available in the [Supplementary File](#).

## Supplemental Information

Supplemental information for this article can be found online at <http://dx.doi.org/10.7717/peerj.13771#supplemental-information>.

## REFERENCES

- Abdullah MT. 2017.** Conserving the biodiversity of Kuwait through DNA barcoding the flora. D. Phil. Thesis, University of Edinburgh & Royal Botanic Garden Edinburgh.
- Altschul SF, Gish W, Miller W, Myers EW, Lipman DJ. 1990.** Basic local alignment search tool. *Journal of Molecular Biology* **215**(3):403–410 DOI [10.1016/S0022-2836\(05\)80360-2](https://doi.org/10.1016/S0022-2836(05)80360-2).
- Bafeel SO, Arif IA, Bakir MA, Al Homaidan AA, Al Farhan AH, Khan HA. 2012.** DNA barcoding of arid wild plants using rbcL gene sequences. *Genetics and Molecular Research* **11**(3):1934–1941 DOI [10.4238/2012.July.19.12](https://doi.org/10.4238/2012.July.19.12).
- Birch JL, Walsh NG, Cantrill DJ, Holmes GD, Murphy DJ. 2017.** Testing efficacy of distance and tree-based methods for DNA barcoding of grasses (*Poaceae* tribe *Poeae*) in Australia. *PLOS ONE* **12**(10):e0186259 DOI [10.1371/journal.pone.0186259](https://doi.org/10.1371/journal.pone.0186259).
- Braukmann TW, Kuzmina ML, Sills J, Zakharov EV, Hebert PD. 2017.** Testing the efficacy of DNA barcodes for identifying the vascular plants of Canada. *PLOS ONE* **12**(1):e0169515 DOI [10.1371/journal.pone.0169515](https://doi.org/10.1371/journal.pone.0169515).
- Burgess KS, Fazekas AJ, Kesanakurti PR, Graham SW, Husband BC, Newmaster SG, Percy DM, Hajibabaei M, Barrett SCH. 2011.** Discriminating plant species in a local temperate flora using the rbcL+ matK DNA barcode. *Methods in Ecology and Evolution* **2**(4):333–340 DOI [10.1111/j.2041-210X.2011.00092.x](https://doi.org/10.1111/j.2041-210X.2011.00092.x).
- CBOL Plant Working Group. 2009.** A DNA barcode for land plants. *Proceedings of the National Academy of Sciences of the United States of America* **106**:12794–12797 DOI [10.1073/pnas.0905845106](https://doi.org/10.1073/pnas.0905845106).
- CBOL Plant Working Group1, Hollingsworth PM, Forrest LL, Spouge JL, Hajibabaei M, Ratnasingham S, van der Bank M, Chase MW, Cowan RS, Erickson DL, Fazekas AJ, Graham SW, James KE, Kim K-J, Kress WJ, Schneider H, van AlphenStahl J, Barrett SCH, van den Berg C, Bogarin D, Burgess KS, Cameron KM, Carine M, Chacón J, Clark A, Clarkson JJ, Conrad F, Devey DS, Ford CS, Hedderson TAJ, Hollingsworth ML, Husband BC, Kelly LJ, Kesanakurti PR, Kim JS, Kim Y-D, Lahaye R, Lee H-L, Long DG, Madriñán S, Maurin O, Meusnier I, Newmaster SG, Park C-W, Percy DM, Petersen G, Richardson JE, Salazar GA, Savolainen V, Seberg O, Wilkinson MJ, Yi D-K, Little DP. 2009.** A DNA barcode for land plants. *Proceedings of the National Academy of Sciences of the United States of America* **106**(31):12794–12797 DOI [10.1073/pnas.0905845106](https://doi.org/10.1073/pnas.0905845106).
- China Plant BOL Group, Li DZ, Gao LM, Li HT, Wang H, Ge XJ, Liu JQ, Chen ZD, Zhou SL, Chen SL, Yang JB, Fu CX, Zeng CX, Yan HF, Zhu YJ, Sun YS, Chen SY, Zhao L, Wang K, Yang T, Duan GW. 2011.** Comparative analysis of a large dataset indicates that internal

transcribed spacer (ITS) should be incorporated into the core barcode for seed plants.

*Proceedings of the National Academy of Sciences of the United States of America* **108(49)**:19641–19646 DOI [10.1073/pnas.1104551108](https://doi.org/10.1073/pnas.1104551108).

- De Groot GA, During HJ, Maas JW, Schneider H, Vogel JC, Erkens RH. 2011.** Use of *rbcL* and *trnL-F* as a two-locus DNA barcode for identification of NW-European ferns: an ecological perspective. *PLOS ONE* **6(1)**:e16371 DOI [10.1371/journal.pone.0016371](https://doi.org/10.1371/journal.pone.0016371).
- Denk T, Grimm GW, Manos PS, Deng M, Hipp AL. 2017.** An updated infrageneric classification of the oaks: review of previous taxonomic schemes and synthesis of evolutionary patterns. In: Gil-Peigrín E, Peguero-Pina J, Sancho-Knapik D, eds. *Oaks Physiological Ecology. Exploring the Functional Diversity of Genus Quercus L. Tree Physiology*. Vol. 7. Cham: Springer, 13–38.
- Dong W, Cheng T, Li C, Xu C, Long P, Chen C, Zhou S. 2014.** Discriminating plants using the DNA barcode *rbcLb*: an appraisal based on a large data set. *Molecular Ecology Resources* **14(2)**:336–343 DOI [10.1111/1755-0998.12185](https://doi.org/10.1111/1755-0998.12185).
- Edgar RC. 2004.** MUSCLE: multiple sequence alignment with high accuracy and high throughput. *Nucleic Acids Research* **32(5)**:1792–1797 DOI [10.1093/nar/gkh340](https://doi.org/10.1093/nar/gkh340).
- Fazekas AJ, Burgess KS, Kesanakurti PR, Graham SW, Newmaster SG, Husband BC, Percy DM, Hajibabaei M, Barrett SCH. 2008.** Multiple multilocus DNA barcodes from the plastid genome discriminate plant species equally well. *PLOS ONE* **3(7)**:e2802 DOI [10.1371/journal.pone.0002802](https://doi.org/10.1371/journal.pone.0002802).
- Fazekas AJ, Kuzmina ML, Newmaster SG, Hollingsworth PM. 2012.** DNA barcoding methods for land plants. In: *DNA barcodes*. Totowa, NJ: Humana Press, 223–252.
- Fernandez-Eguiarte A, Zavala-Hidalgo J, Romero-Centeno R. 2020.** Atlas Climático Digital de México (versión 2.0). Centro de Ciencias de La Atmósfera. Universidad Nacional Autónoma de México. Servicio Meteorológico Nacional, Comisión Nacional Del Agua. Available at <http://atlasclimatico.unam.mx/atlas/kml/> (accessed 13 March 2020).
- Gaston KJ, Williams PH. 1996.** Spatial patterns in taxonomic diversity. In: Gaston KJ, ed. *Biodiversity: A Biology of Numbers and Difference*. Oxford, UK: Blackwell Science, Limited, 202–229.
- Gemeinholzer B, Bachmann K. 2005.** Examining morphological and molecular diagnostic character states of *Cichorium intybus* L. (*Asteraceae*) and *C. spinosum* L. *Plant Systematics and Evolution* **253(1)**:105–123 DOI [10.1007/s00606-004-0272-6](https://doi.org/10.1007/s00606-004-0272-6).
- Giovino A, Marino P, Domina G, Scialabba A, Schicchi R, Diliberto G, Rizza C, Scibetta S. 2016.** Evaluation of the DNA barcoding approach to develop a reference data-set for the threatened flora of Sicily. *Plant Biosystems-An International Journal Dealing with all Aspects of Plant Biology* **150(4)**:631–640 DOI [10.1080/11263504.2014.989285](https://doi.org/10.1080/11263504.2014.989285).
- Hajibabaei M, Janzen DH, Burns JM, Hallwachs W, Hebert PDN. 2006.** DNA barcodes distinguish species of tropical Lepidoptera. *Proceedings of the National Academy of Sciences of the United States of America* **103(4)**:968–971 DOI [10.1073/pnas.0510466103](https://doi.org/10.1073/pnas.0510466103).
- Hajibabaei M, Singer GAC, Hebert PDN, Hickey DA. 2007.** DNA barcoding: how it complements taxonomy, molecular phylogenetics and population genetics. *Trends in Genetics* **23(4)**:167–172 DOI [10.1016/j.tig.2007.02.001](https://doi.org/10.1016/j.tig.2007.02.001).
- Hebert PDN, Cywinska A, Ball SL, deWaard JR. 2003.** Biological identifications through DNA barcodes. *Proceedings of the Royal Society of London. Series B: Biological Sciences* **270(1512)**:313–321 DOI [10.1098/rspb.2002.2218](https://doi.org/10.1098/rspb.2002.2218).
- Hollingsworth PM. 2011.** Refining the DNA barcode for land plants. *Proceedings of the National Academy of Sciences of the United States of America* **108(49)**:19451–19452 DOI [10.1073/pnas.1116812108](https://doi.org/10.1073/pnas.1116812108).



- Hvistendahl M. 2016. A tale of two worlds. *Scientific American* 315(3):42–47.
- The IUCN Red List. 2021. The IUCN red list of threatened species. Version 2021-3. Available at <https://www.iucnredlist.org> (accessed 19 December 2021).
- Kesanakurti PR, Fazekas AJ, Burgess KS, Percy DM, Newmaster SG, Graham SW, Barrett SCH, Hajibabaei M, Husband BC. 2011. Spatial patterns of plant diversity below-ground as revealed by DNA barcoding. *Molecular Ecology* 20(6):1289–1302 DOI 10.1111/j.1365-294X.2010.04989.x.
- Kress WJ, Erickson DL. 2007. A two-locus global DNA barcode for land plants: the coding rbcL gene complements the non-coding trnH-psbA spacer region. *PLOS ONE* 2(6):e508 DOI 10.1371/journal.pone.0000508.
- Kumar S, Stecher G, Li M, Knyaz C, Tamura K. 2018. MEGA X: molecular evolutionary genetics analysis across computing platforms. *Molecular Biology and Evolution* 35(6):1547 DOI 10.1093/molbev/msy096.
- Kuzmina ML. 2011. Canadian center for DNA barcoding (CCDB) protocols. Primers sets for plants and fungi. Available at <http://www.dnabarcoding.ca>.
- Lahaye R, van der Bank M, Bogarin D, Warner J, Pupulin F, Gigot G, Maurin O, Duthoit S, Barraclough TG, Savolainen V. 2008. DNA barcoding the floras of biodiversity hotspots. *Proceedings of the National Academy of Sciences of the United States of America* 105(8):2923–2928 DOI 10.1073/pnas.0709936105.
- Letunic I, Bork P. 2019. Interactive tree of life (iTOL) v4: recent updates and new developments. *Nucleic Acids Research* 47(W1):W256–W259 DOI 10.1093/nar/gkz239.
- Maloukh L, Kumarappan A, Jarrar M, Salehi J, El-Wakil H, Rajya Lakshmi TV. 2017. Discriminatory power of rbcL barcode locus for authentication of some of United Arab Emirates (UAE) native plants. *3 Biotech* 7(2):1–7 DOI 10.1007/s13205-017-0746-1.
- Mora C, Tittensor DP, Adl S, Simpson AGB, Worm B, Mace GM. 2011. How many species are there on Earth and in the ocean? *PLOS Biology* 9(8):e1001127 DOI 10.1371/journal.pbio.1001127.
- Nitta JH. 2008. Exploring the utility of three plastid loci for biocoding the filmy ferns (Hymenophyllaceae) of Moorea. *Taxon* 57(3):725–736 DOI 10.1002/tax.573006.
- Ortiz-Pérez MA, Hernández Santana JR, Figueroa Mah-Eng JM. 2004. Reconocimiento Fisiográfico y geomorfológico. In: García-Mendoza A, Ordóñez MJ, Briones MA, eds. *Biodiversidad de Oaxaca*. México D.F., México: Instituto de Biología, Universidad Nacional Autónoma de México, Fondo Oaxaqueño para la Conservación de la Naturaleza, World Wildlife Foundation, 43–54.
- Pang X, Liu C, Shi L, Liu R, Liang D, Li H, Cherny SS, Chen S. 2012. Utility of the trnH-psbA intergenic spacer region and its combinations as plant DNA barcodes: a meta-analysis. *PLOS ONE* 7(11):e48833 DOI 10.1371/journal.pone.0048833.
- Percy DM, Argus GW, Cronk QC, Fazekas AJ, Kesanakurti PR, Burgess KS, Husband BC, Newmaster SG, Barrett SCH, Graham SW. 2014. Understanding the spectacular failure of DNA barcoding in willows (*Salix*): does this result from a trans-specific selective sweep? *Molecular Ecology* 23:4737–4756 DOI 10.1111/mec.12837.
- Piredda R, Simeone MC, Attimonelli M, Bellarosa R, Schirone B. 2011. Prospects of barcoding the Italian wild dendroflora: oaks reveal severe limitations to tracking species identity. *Molecular Ecology Resources* 11(1):72–83 DOI 10.1111/j.1755-0998.2010.02900.x.
- Ratnasingham S, Hebert PD. 2007. BOLD: the barcode of life data system (<http://www.barcodinglife.org>). *Molecular Ecology Notes* 7(3):355–364 DOI 10.1111/j.1471-8286.2007.01678.x.

- Smith SA, Donoghue MJ. 2008.** Rates of molecular evolution are linked to life history in flowering plants. *Science* **322(5898)**:86–89 DOI [10.1126/science.1163197](https://doi.org/10.1126/science.1163197).
- Tan S-L, Luo Y-H, Hollingsworth PM, Burgess KS, Xu K, Li D-Z, Gao L-M. 2018.** DNA barcoding herbaceous and woody plant species at a subalpine forest dynamics plot in Southwest China. *Ecology and Evolution* **8(14)**:7195–7205 DOI [10.1002/ece3.4254](https://doi.org/10.1002/ece3.4254).
- Tate JA, Simpson BB. 2003.** Paraphyly of Tarasa (Malvaceae) and diverse origins of the polyploid species. *Systematic Botany* **28(4)**:723–737 DOI [10.1043/02-64.1](https://doi.org/10.1043/02-64.1).
- The Catalogue of Life Partnership. 2017.** APG IV: angiosperm phylogeny group classification for the orders and families of flowering plants. Available at <https://doi.org/10.15468/fzuaam> (accessed 21 February 2022).
- Thomas WW. 1999.** Conservation and monographic research on the flora of Tropical America. *Biodiversity & Conservation* **8(8)**:1007–1015 DOI [10.1023/A:1008857429787](https://doi.org/10.1023/A:1008857429787).
- Toledo-Aceves T, Meave JA, González-Espinosa M, Ramírez-Marcial Ni. 2011.** Tropical montane cloud forests: current threats and opportunities for their conservation and sustainable management in Mexico. *Journal of Environmental Management* **92(3)**:974–981 DOI [10.1016/j.jenvman.2010.11.007](https://doi.org/10.1016/j.jenvman.2010.11.007).
- Trujillo-Argueta S, Del Castillo RF, Tejero-Diez D, Matias-Cervantes CA, Velasco-Murguía A. 2021.** DNA barcoding ferns in an unexplored tropical montane cloud forest area of southeast Oaxaca, Mexico. *Scientific Reports* **11(1)**:1–12 DOI [10.1038/s41598-021-02237-8](https://doi.org/10.1038/s41598-021-02237-8).
- Villaseñor J. 2010.** El bosque húmedo de montaña en México y sus plantas vasculares: catálogo florístico-taxonómico. México, D.F: Comisión Nacional para el Conocimiento y Uso de la Biodiversidad- Universidad Nacional Autónoma de México, 40.